



## Full wwPDB EM Validation Report ⓘ

Oct 26, 2024 – 08:06 PM EDT

EMDB ID : EMD-0343  
Title : MicroED structure of Proteinase K at 2.75Å resolution from a single milled crystal.  
Authors : Martynowycz, M.W.; Zhao, W.  
Deposited on : 2018-11-20  
Resolution : 2.75 Å(reported)

This is a Full wwPDB EM Validation Report for a publicly released PDB entry.

We welcome your comments at [validation@mail.wwpdb.org](mailto:validation@mail.wwpdb.org)

A user guide is available at

<https://www.wwpdb.org/validation/2017/EMMapValidationReportHelp>

with specific help available everywhere you see the ⓘ symbol.

The types of validation reports are described at

<http://www.wwpdb.org/validation/2017/FAQs#types>.

---

The following versions of software and data (see [references ⓘ](#)) were used in the production of this report:

EMDB validation analysis : 0.0.1.dev113  
Validation Pipeline (wwPDB-VP) : 2.39

# 1 Experimental information

Property	Value	Source
EM reconstruction method	CRYSTALLOGRAPHY	Depositor
Imposed symmetry	Not Provided	
Number of images used	Not provided	
Resolution determination method	DIFFRACTION PATTERN/LAYERLINES	Depositor
CTF correction method	Not provided	
Microscope	FEI TALOS ARCTICA	Depositor
Voltage (kV)	200	Depositor
Electron dose ( $e^-/\text{\AA}^2$ )	0.04	Depositor
Minimum defocus (nm)	Not provided	
Maximum defocus (nm)	Not provided	
Magnification	Not provided	
Image detector	FEI CETA (4k x 4k)	Depositor
Maximum map value	5.081	Depositor
Minimum map value	-3.936	Depositor
Average map value	0.000	Depositor
Map value standard deviation	0.980	Depositor
Recommended contour level	1.46937	Depositor
Map size (Å)	67.46, 67.46, 106.67	wwPDB
Map dimensions	75, 79, 72	wwPDB
Map angles (°)	90.0, 90.0, 90.0	wwPDB
Pixel spacing (Å)	0.6746, 0.6746, 0.6666875	Depositor

## 2 Map visualisation [i](#)

This section contains visualisations of the EMDB entry EMD-0343. These allow visual inspection of the internal detail of the map and identification of artifacts.

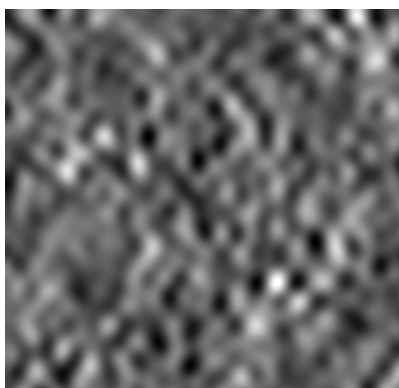
No raw map or half-maps were deposited for this entry and therefore no images, graphs, etc. pertaining to the raw map can be shown.

### 2.1 Orthogonal projections [i](#)

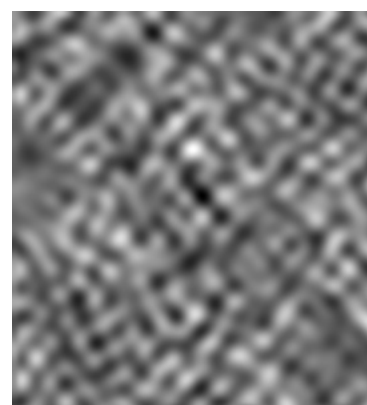
#### 2.1.1 Primary map



X



Y

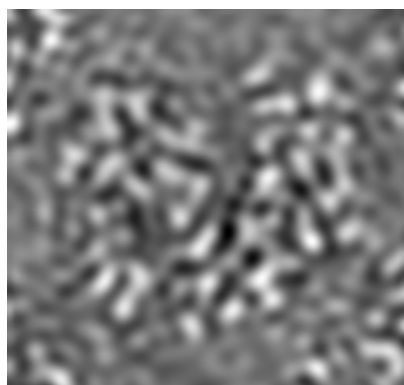


Z

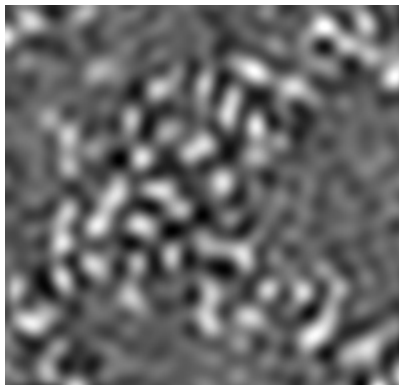
The images above show the map projected in three orthogonal directions.

### 2.2 Central slices [i](#)

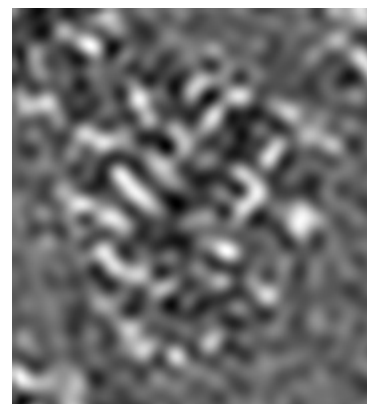
#### 2.2.1 Primary map



X Index: 36



Y Index: 39

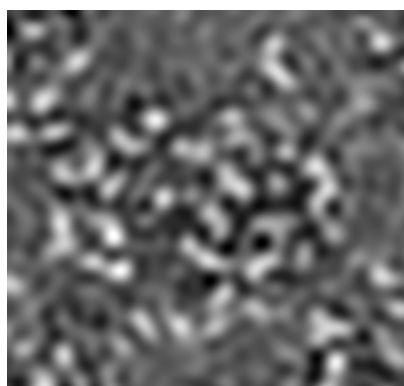


Z Index: 37

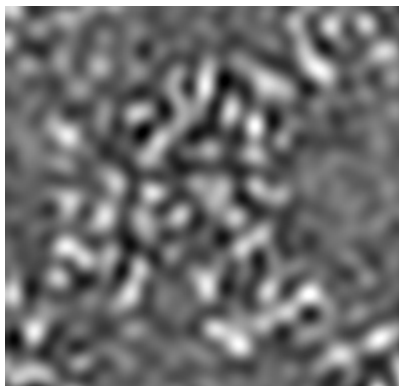
The images above show central slices of the map in three orthogonal directions.

## 2.3 Largest variance slices [i](#)

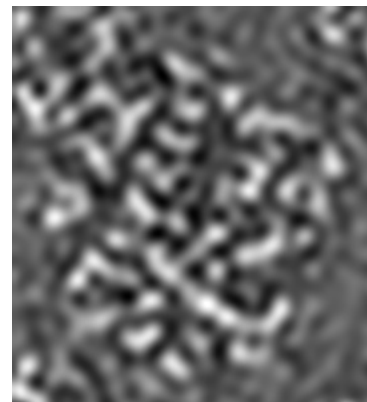
### 2.3.1 Primary map



X Index: 43



Y Index: 37

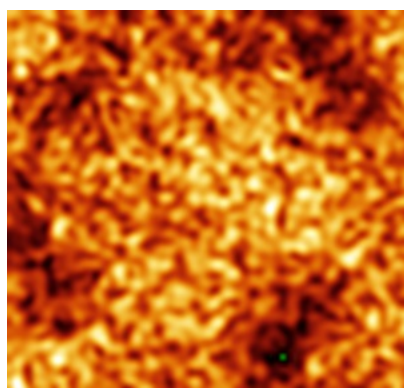


Z Index: 44

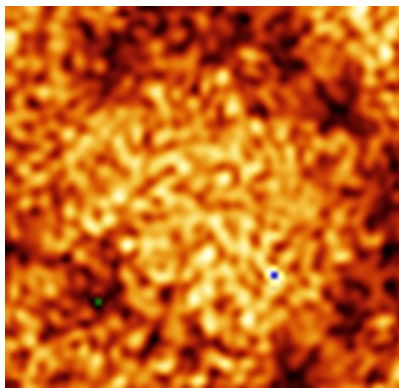
The images above show the largest variance slices of the map in three orthogonal directions.

## 2.4 Orthogonal standard-deviation projections (False-color) [i](#)

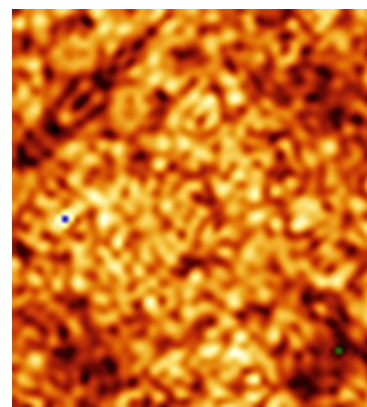
### 2.4.1 Primary map



X



Y

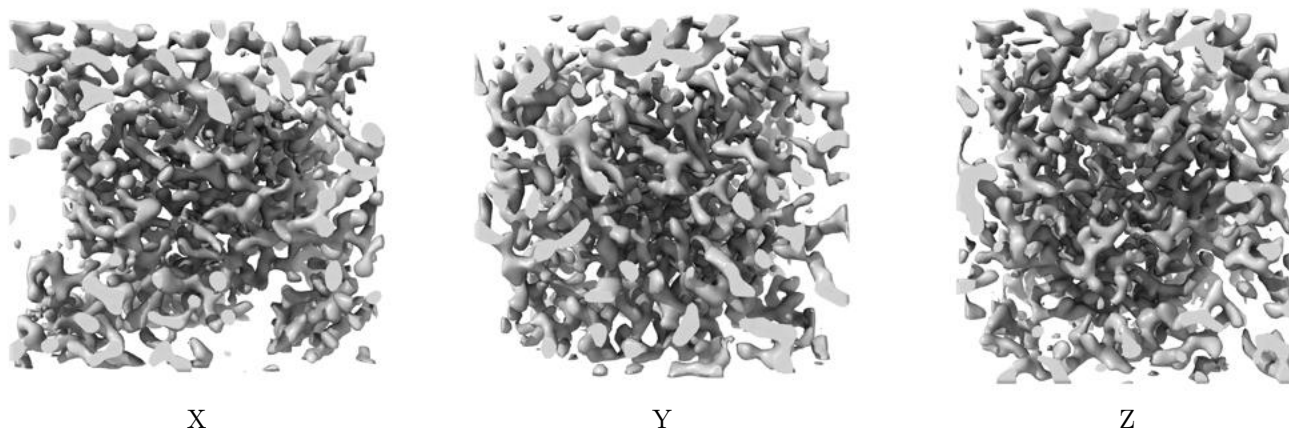


Z

The images above show the map standard deviation projections with false color in three orthogonal directions. Minimum values are shown in green, max in blue, and dark to light orange shades represent small to large values respectively.

## 2.5 Orthogonal surface views [i](#)

### 2.5.1 Primary map



The images above show the 3D surface view of the map at the recommended contour level 1.46937. These images, in conjunction with the slice images, may facilitate assessment of whether an appropriate contour level has been provided.

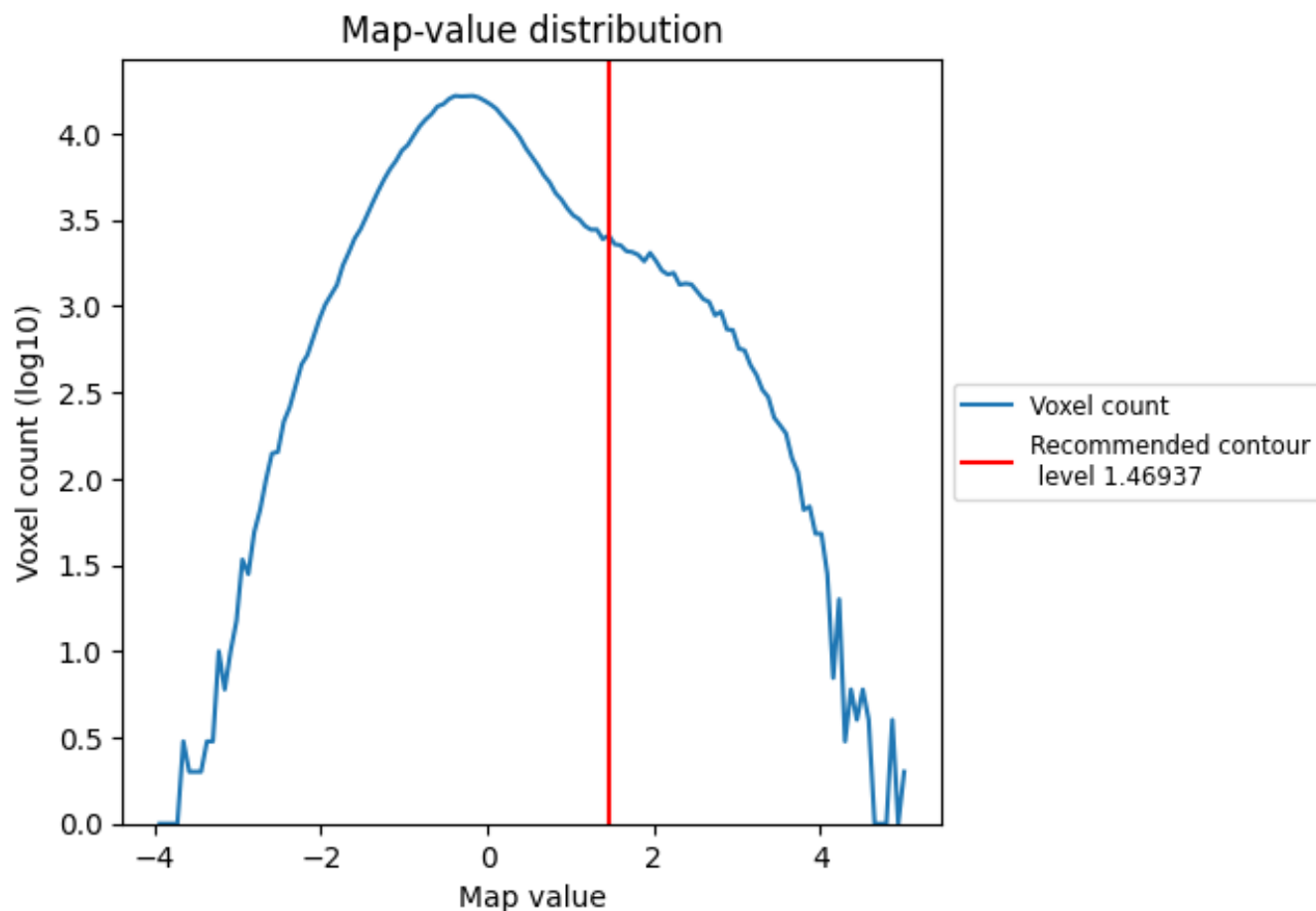
## 2.6 Mask visualisation [i](#)

This section was not generated. No masks/segmentation were deposited.

### 3 Map analysis [i](#)

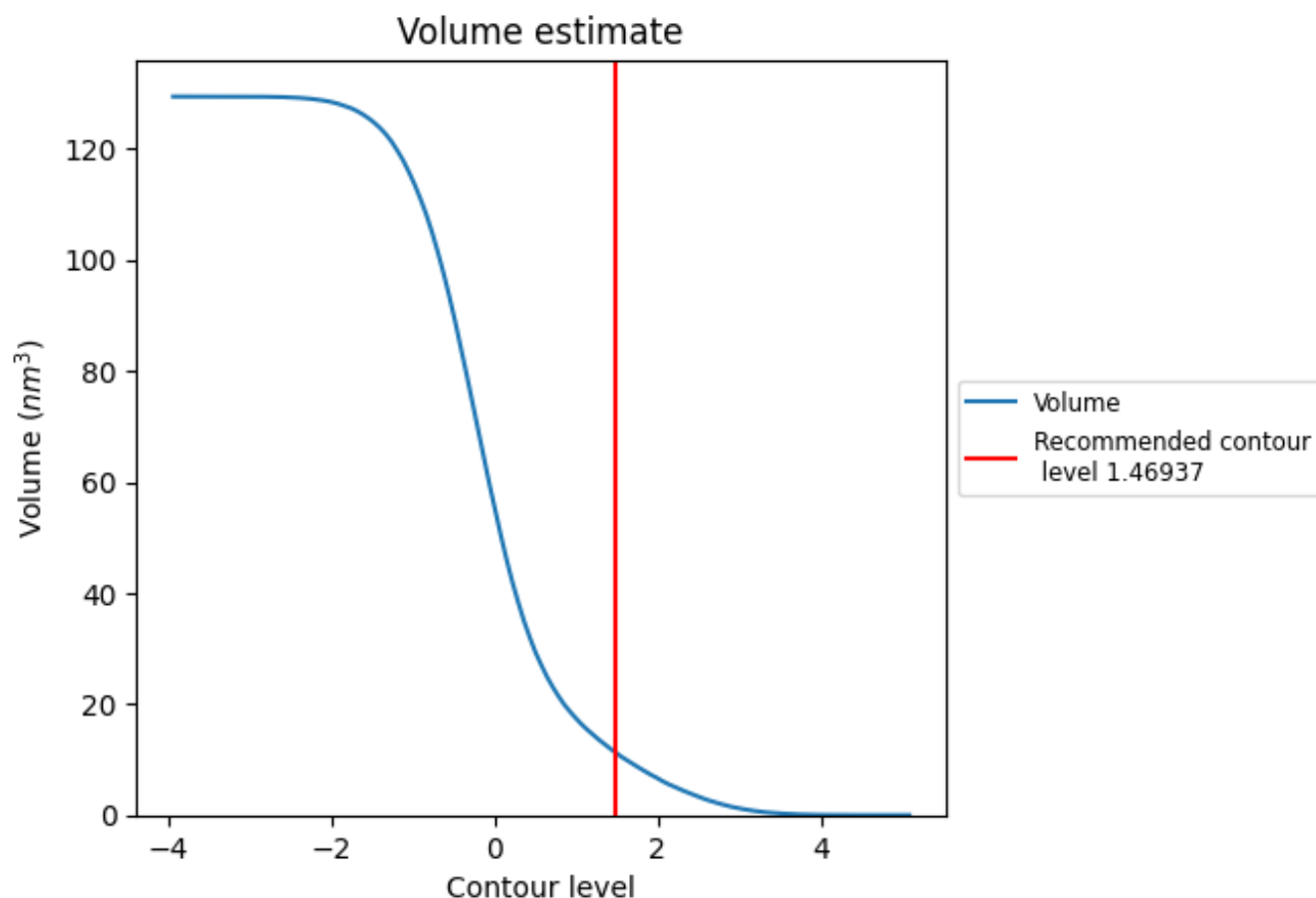
This section contains the results of statistical analysis of the map.

#### 3.1 Map-value distribution [i](#)



The map-value distribution is plotted in 128 intervals along the x-axis. The y-axis is logarithmic. A spike in this graph at zero usually indicates that the volume has been masked.

### 3.2 Volume estimate [i](#)



The volume at the recommended contour level is 11 nm<sup>3</sup>; this corresponds to an approximate mass of 10 kDa.

The volume estimate graph shows how the enclosed volume varies with the contour level. The recommended contour level is shown as a vertical line and the intersection between the line and the curve gives the volume of the enclosed surface at the given level.

### 3.3 Rotationally averaged power spectrum [i](#)

This section was not generated. The rotationally averaged power spectrum is only generated for cubic maps.

## 4 Fourier-Shell correlation

This section was not generated. No FSC curve or half-maps provided.