



## Full wwPDB EM Validation Report ⓘ

Jun 27, 2023 – 04:18 pm BST

EMDB ID : EMD-15150  
Title : Cryo-electron tomogram of secreted particles from *Apilactobacillus kunkeei* (TS\_01)  
Authors : Seeger, C.; Andersson, S.G.E.  
Deposited on : 2022-06-13  
Resolution : 10.09 Å(reported)

This is a Full wwPDB EM Validation Report for a publicly released PDB entry.

We welcome your comments at [validation@mail.wwpdb.org](mailto:validation@mail.wwpdb.org)

A user guide is available at

<https://www.wwpdb.org/validation/2017/EMTomogramValidationReportHelp>  
with specific help available everywhere you see the ⓘ symbol.

The types of validation reports are described at

<http://www.wwpdb.org/validation/2017/FAQs#types>.

---

The following versions of software and data (see [references ⓘ](#)) were used in the production of this report:

EMDB validation analysis : 0.0.1.dev50  
Validation Pipeline (wwPDB-VP) : 2.33

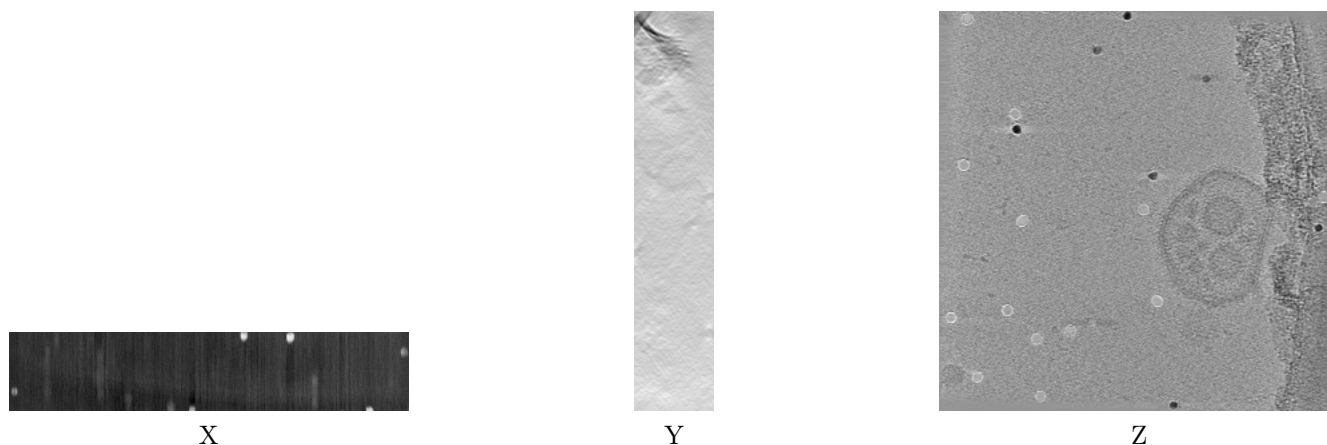
# 1 Experimental information

| Property                             | Value                           | Source    |
|--------------------------------------|---------------------------------|-----------|
| EM reconstruction method             | TOMOGRAPHY                      | Depositor |
| Imposed symmetry                     | Not Provided                    |           |
| Number of tilted images used         | 61                              | Depositor |
| Resolution determination method      | OTHER                           | Depositor |
| CTF correction method                | Not provided                    |           |
| Microscope                           | FEI TALOS ARCTICA               | Depositor |
| Voltage (kV)                         | 200                             | Depositor |
| Electron dose ( $e^-/\text{\AA}^2$ ) | 95.0                            | Depositor |
| Minimum defocus (nm)                 | 4.0                             | Depositor |
| Maximum defocus (nm)                 | 6.0                             | Depositor |
| Magnification                        | Not provided                    |           |
| Image detector                       | FEI FALCON III (4k x 4k)        | Depositor |
| Maximum voxel value                  | 127.000                         | Depositor |
| Minimum voxel value                  | -128.000                        | Depositor |
| Average voxel value                  | -20.344                         | Depositor |
| Voxel value standard deviation       | 14.394                          | Depositor |
| Recommended contour level            | Not applicable                  |           |
| Tomogram size ( $\text{\AA}$ )       | 5167.265, 5167.265, 1009.23145  | wwPDB     |
| Tomogram dimensions                  | 512, 512, 100                   | wwPDB     |
| Tomogram angles ( $^\circ$ )         | 90.0, 90.0, 90.0                | wwPDB     |
| Grid spacing ( $\text{\AA}$ )        | 10.092315, 10.092315, 10.092315 | Depositor |

## 2 Tomogram visualisation [i](#)

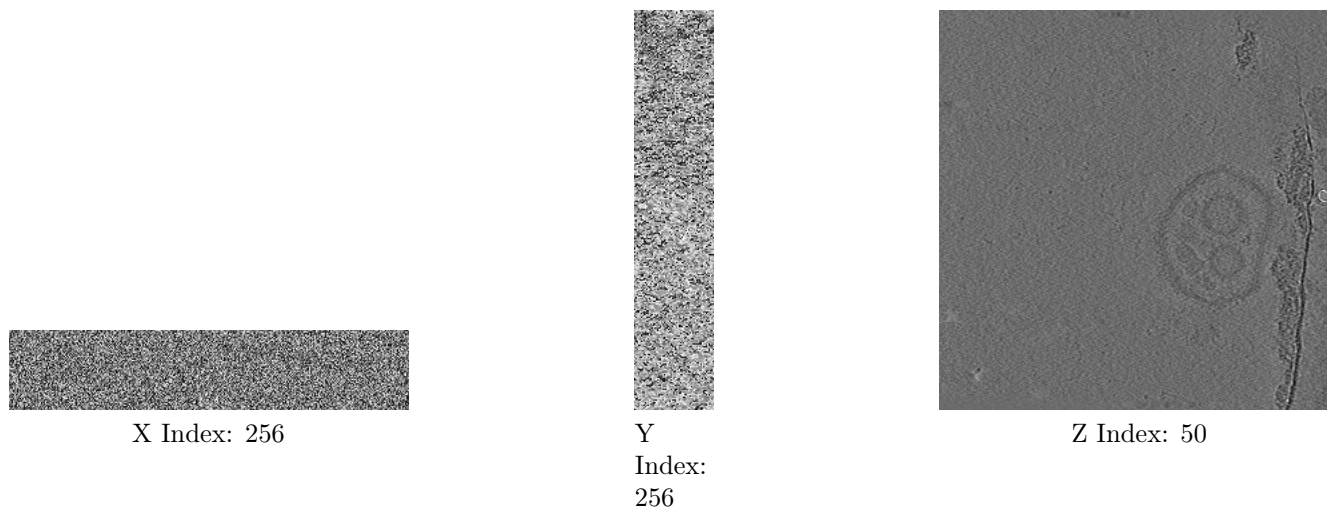
This section contains visualisations of the EMDB entry EMD-15150. These allow visual inspection of the internal detail of the tomogram and identification of artifacts.

### 2.1 Orthogonal projections [i](#)



The images above show the tomogram projected in three orthogonal directions.

### 2.2 Central slices [i](#)

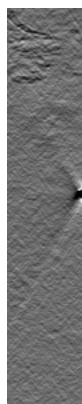
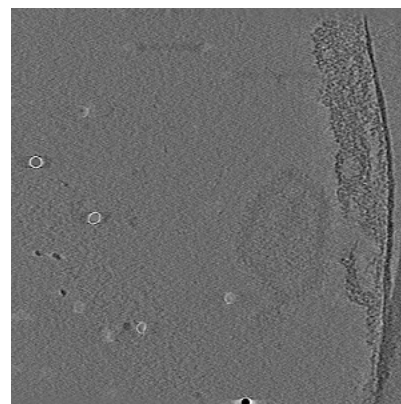


The images above show central slices of the tomogram in three orthogonal directions.

## 2.3 Largest variance slices [i](#)



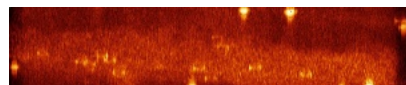
X Index: 473

Y  
Index:  
300

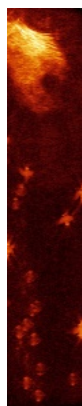
Z Index: 24

The images above show the largest variance slices of the tomogram in three orthogonal directions.

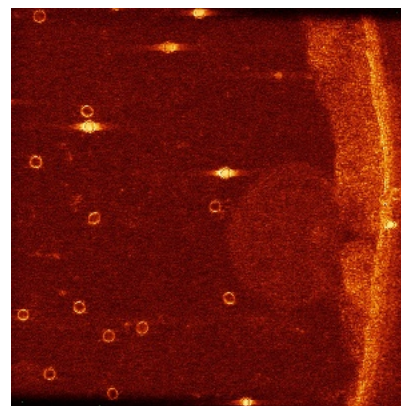
## 2.4 Orthogonal standard-deviation projections (False-color) [i](#)



X



Y



Z

The images above show the tomogram projected in three orthogonal directions.

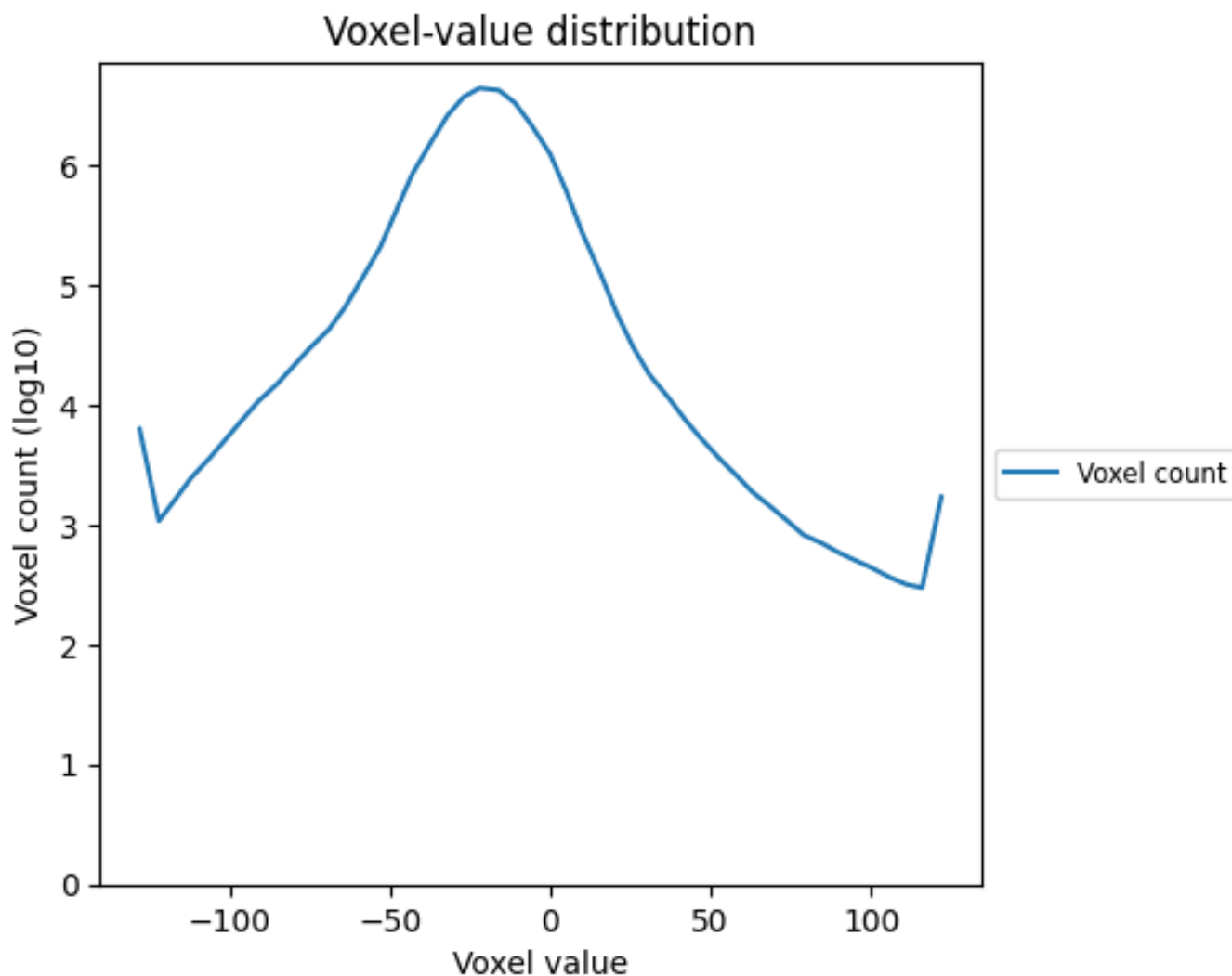
## 2.5 Mask visualisation [i](#)

This section was not generated. No masks/segmentation were deposited.

### 3 Tomogram analysis [i](#)

This section contains the results of statistical analysis of the tomogram.

#### 3.1 Voxel-value distribution [i](#)



The voxel-value distribution is plotted in 128 intervals along the x-axis. The y-axis is logarithmic.