



## Full wwPDB EM Validation Report ⓘ

Mar 21, 2024 – 12:22 pm GMT

EMDB ID : EMD-15645  
Title : Tomogram of lamellipodia  
Authors : Wen-Lu, C.; Ohad, M.  
Deposited on : 2022-08-23  
Resolution : Not provided

This is a Full wwPDB EM Validation Report for a publicly released PDB entry.

We welcome your comments at [validation@mail.wwpdb.org](mailto:validation@mail.wwpdb.org)

A user guide is available at

<https://www.wwpdb.org/validation/2017/EMTomogramValidationReportHelp>  
with specific help available everywhere you see the ⓘ symbol.

The types of validation reports are described at

<http://www.wwpdb.org/validation/2017/FAQs#types>.

---

The following versions of software and data (see [references ⓘ](#)) were used in the production of this report:

EMDB validation analysis : 0.0.1.dev92  
Validation Pipeline (wwPDB-VP) : 2.36

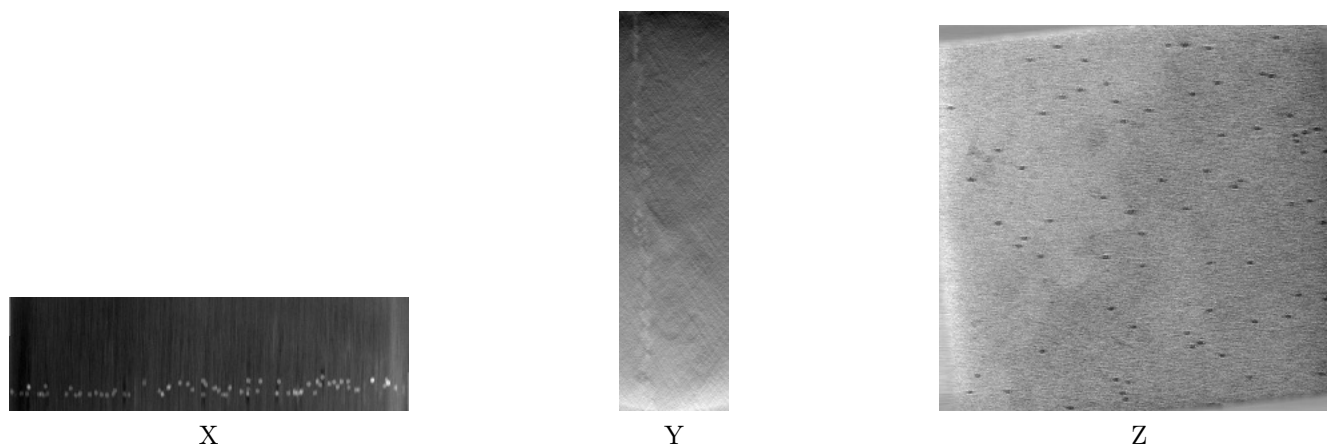
# 1 Experimental information

| Property                             | Value                          | Source    |
|--------------------------------------|--------------------------------|-----------|
| EM reconstruction method             | TOMOGRAPHY                     | Depositor |
| Imposed symmetry                     | Not Provided                   |           |
| Number of tilted images used         | 41                             | Depositor |
| Resolution determination method      | Not provided                   |           |
| CTF correction method                | Not provided                   |           |
| Microscope                           | FEI TITAN KRIOS                | Depositor |
| Voltage (kV)                         | 300                            | Depositor |
| Electron dose ( $e^-/\text{\AA}^2$ ) | 2.46                           | Depositor |
| Minimum defocus (nm)                 | 4.0                            | Depositor |
| Maximum defocus (nm)                 | 4.0                            | Depositor |
| Magnification                        | Not provided                   |           |
| Image detector                       | GATAN K2 QUANTUM (4k x 4k)     | Depositor |
| Maximum voxel value                  | 127.000                        | Depositor |
| Minimum voxel value                  | -128.000                       | Depositor |
| Average voxel value                  | -4.361                         | Depositor |
| Voxel value standard deviation       | 21.887                         | Depositor |
| Recommended contour level            | Not applicable                 |           |
| Tomogram size ( $\text{\AA}$ )       | 8472.9795, 8190.547, 2312.4172 | wwPDB     |
| Tomogram dimensions                  | 960, 928, 262                  | wwPDB     |
| Tomogram angles ( $^\circ$ )         | 90.0, 90.0, 90.0               | wwPDB     |
| Grid spacing ( $\text{\AA}$ )        | 8.82602, 8.82602, 8.82602      | Depositor |

## 2 Tomogram visualisation [i](#)

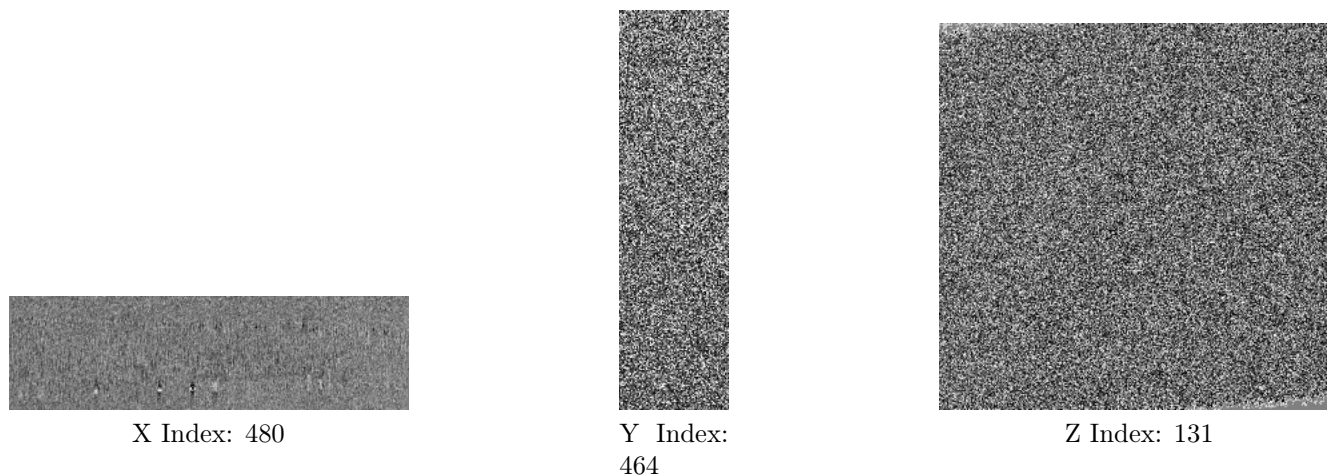
This section contains visualisations of the EMDB entry EMD-15645. These allow visual inspection of the internal detail of the tomogram and identification of artifacts.

### 2.1 Orthogonal projections [i](#)



The images above show the tomogram projected in three orthogonal directions.

### 2.2 Central slices [i](#)

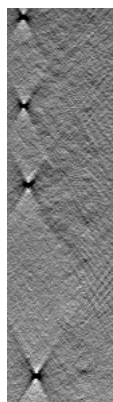
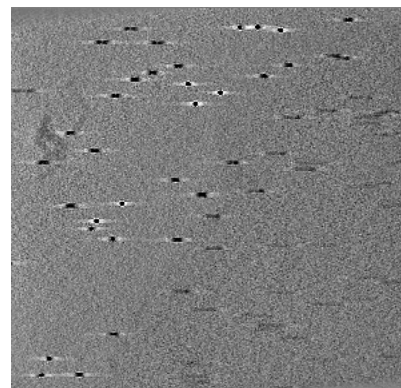


The images above show central slices of the tomogram in three orthogonal directions.

## 2.3 Largest variance slices [i](#)



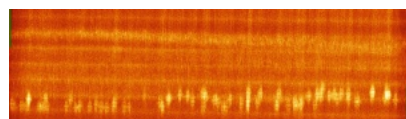
X Index: 447

Y Index:  
555

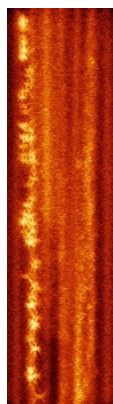
Z Index: 60

The images above show the largest variance slices of the tomogram in three orthogonal directions.

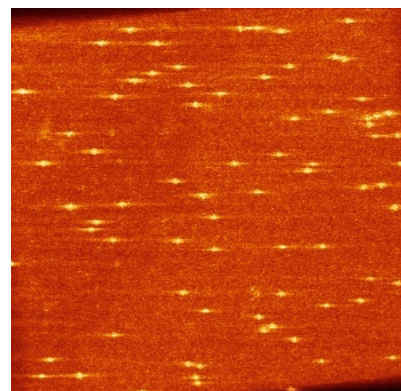
## 2.4 Orthogonal standard-deviation projections (False-color) [i](#)



X



Y



Z

The images above show the tomogram projected in three orthogonal directions.

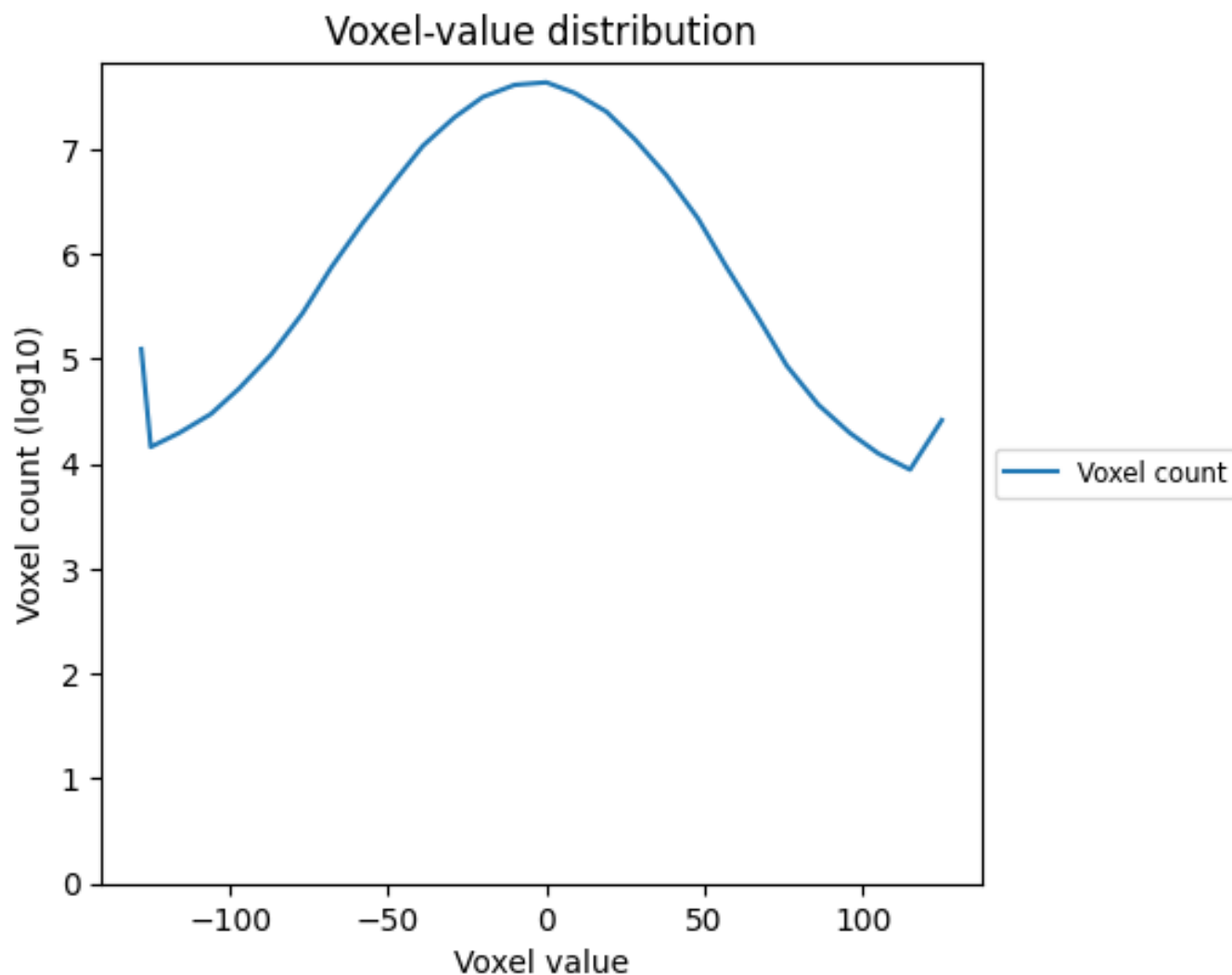
## 2.5 Mask visualisation [i](#)

This section was not generated. No masks/segmentation were deposited.

### 3 Tomogram analysis [i](#)

This section contains the results of statistical analysis of the tomogram.

#### 3.1 Voxel-value distribution [i](#)



The voxel-value distribution is plotted in 128 intervals along the x-axis. The y-axis is logarithmic.