



wwPDB EM Validation Summary Report ⓘ

Feb 20, 2023 – 09:10 am GMT

EMDB ID : EMD-16455
Title : Electron cryo-tomography of HeLa cells expressing Cidec-EGFP
Authors : Ganeva, I.; Lim, K.; Boulanger, J.; Hoffmann, P.C.; Muriel, O.; Borgeaud, A.C.; Hagen, W.J.H.; Savage, D.B.; Kukulski, W.
Deposited on : 2023-01-13
Resolution : Not provided

This is a wwPDB EM Validation Summary Report for a publicly released PDB entry.

We welcome your comments at validation@mail.wwpdb.org

A user guide is available at

<https://www.wwpdb.org/validation/2017/EMTomogramValidationReportHelp>

with specific help available everywhere you see the ⓘ symbol.

The types of validation reports are described at

<http://www.wwpdb.org/validation/2017/FAQs#types>.

The following versions of software and data (see [references ⓘ](#)) were used in the production of this report:

EMDB validation analysis : 0.0.1.dev43
Validation Pipeline (wwPDB-VP) : 2.32.1

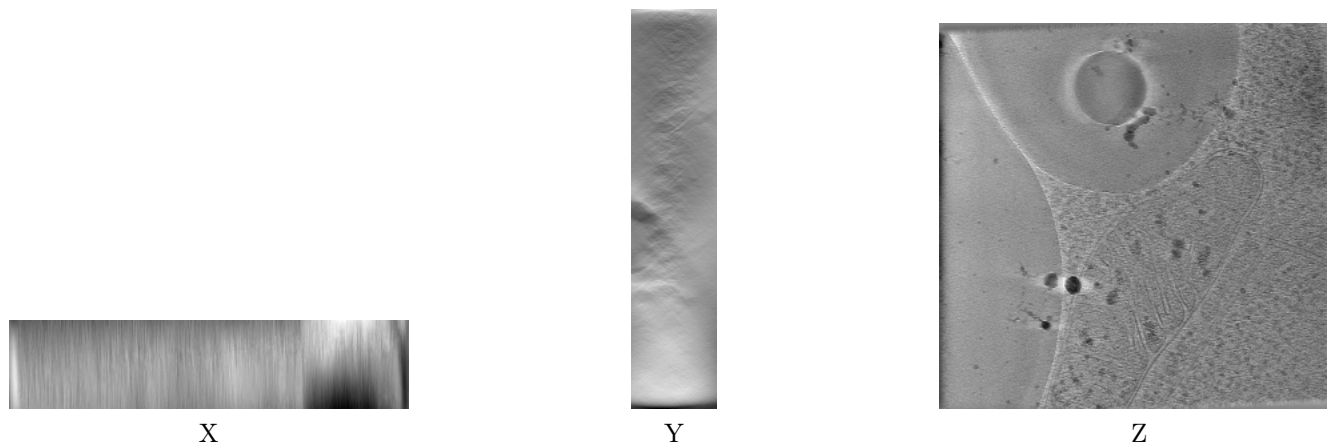
1 Experimental information ⓘ

Property	Value	Source
EM reconstruction method	TOMOGRAPHY	Depositor
Imposed symmetry	Not Provided	
Number of tilted images used	105	Depositor
Resolution determination method	Not provided	
CTF correction method	Not provided	
Microscope	FEI TITAN KRIOS	Depositor
Voltage (kV)	300	Depositor
Electron dose ($e^-/\text{\AA}^2$)	1.0	Depositor
Minimum defocus (nm)	5.0	Depositor
Maximum defocus (nm)	5.0	Depositor
Magnification	Not provided	
Image detector	GATAN K2 SUMMIT (4k x 4k)	Depositor
Maximum voxel value	591.000	Depositor
Minimum voxel value	-791.000	Depositor
Average voxel value	7.091	Depositor
Voxel value standard deviation	35.639	Depositor
Recommended contour level	Not applicable	
Tomogram size (\AA)	14304.0, 13797.399, 3009.7998	wwPDB
Tomogram dimensions	480, 463, 101	wwPDB
Tomogram angles ($^\circ$)	90.0, 90.0, 90.0	wwPDB
Grid spacing (\AA)	29.8, 29.8, 29.799997	Depositor

2 Tomogram visualisation [i](#)

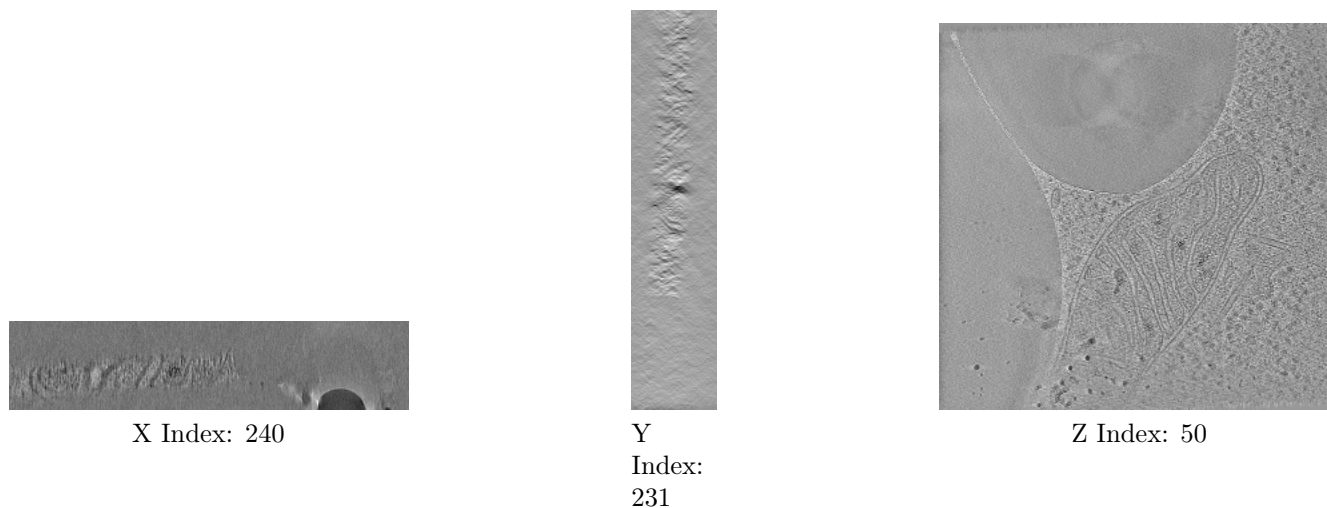
This section contains visualisations of the EMDB entry EMD-16455. These allow visual inspection of the internal detail of the tomogram and identification of artifacts.

2.1 Orthogonal projections [i](#)



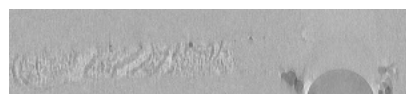
The images above show the tomogram projected in three orthogonal directions.

2.2 Central slices [i](#)

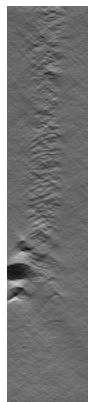


The images above show central slices of the tomogram in three orthogonal directions.

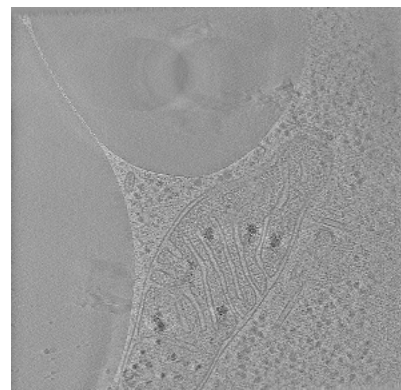
2.3 Largest variance slices [i](#)



X Index: 229



Y
Index:
147



Z Index: 44

The images above show the largest variance slices of the tomogram in three orthogonal directions.

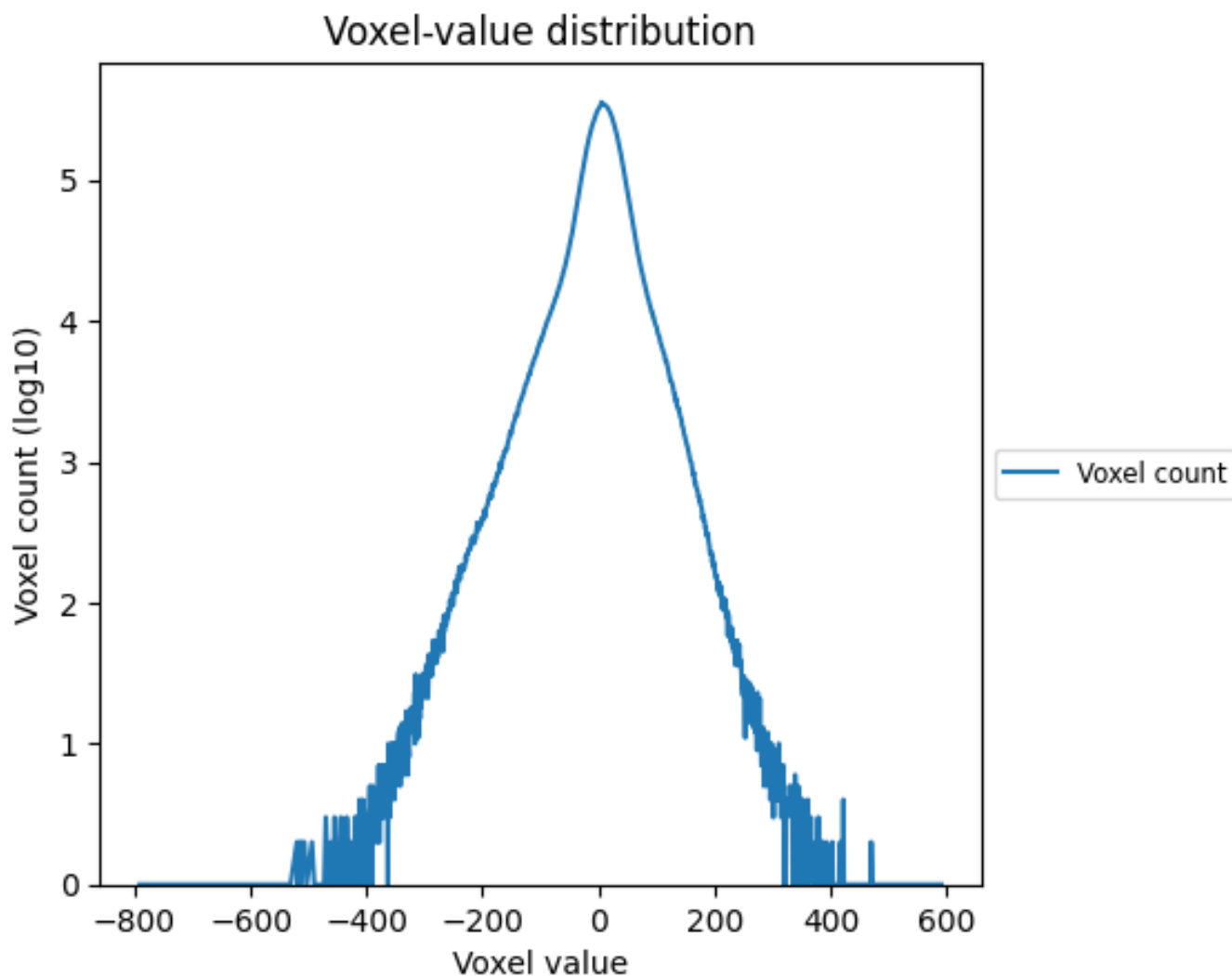
2.4 Mask visualisation [i](#)

This section was not generated. No masks/segmentation were deposited.

3 Tomogram analysis [i](#)

This section contains the results of statistical analysis of the tomogram.

3.1 Voxel-value distribution [i](#)



The voxel-value distribution is plotted in 128 intervals along the x-axis. The y-axis is logarithmic.