



Full wwPDB EM Validation Report ⓘ

Mar 21, 2024 – 01:07 pm GMT

EMDB ID : EMD-18651
Title : GDNF/GFRa1 cell adhesion complex bridging between adhering liposomes.
Authors : Houghton, F.M.; Briggs, D.C.; McDonald, N.Q.
Deposited on : 2023-10-12
Resolution : Not provided

This is a Full wwPDB EM Validation Report for a publicly released PDB entry.

We welcome your comments at validation@mail.wwpdb.org

A user guide is available at

<https://www.wwpdb.org/validation/2017/EMTomogramValidationReportHelp>
with specific help available everywhere you see the ⓘ symbol.

The types of validation reports are described at

<http://www.wwpdb.org/validation/2017/FAQs#types>.

The following versions of software and data (see [references ⓘ](#)) were used in the production of this report:

EMDB validation analysis : 0.0.1.dev92
Validation Pipeline (wwPDB-VP) : 2.36

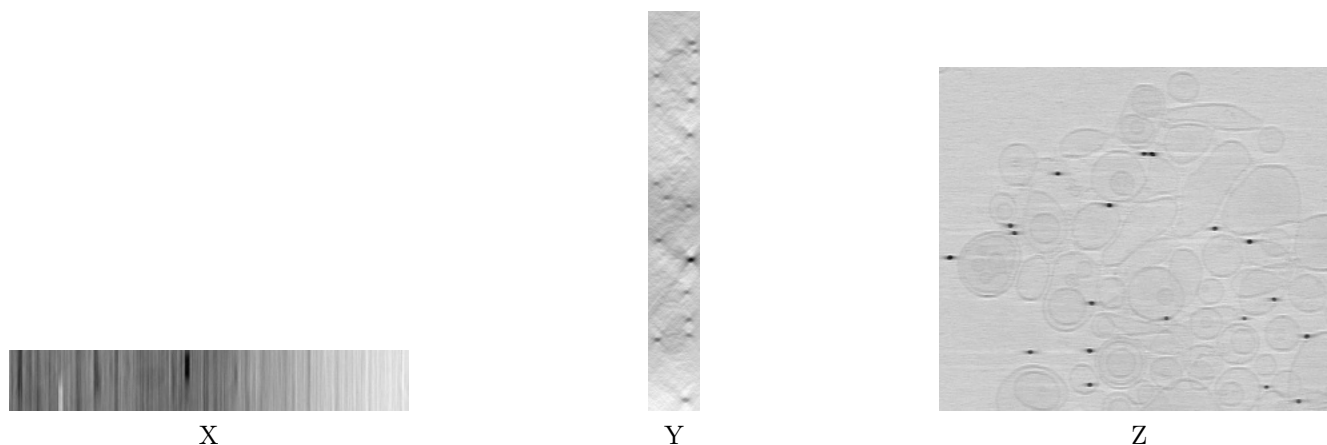
1 Experimental information

Property	Value	Source
EM reconstruction method	TOMOGRAPHY	Depositor
Imposed symmetry	Not Provided	
Number of tilted images used	38	Depositor
Resolution determination method	Not provided	
CTF correction method	Not provided	
Microscope	FEI TALOS ARCTICA	Depositor
Voltage (kV)	200	Depositor
Electron dose ($e^-/\text{\AA}^2$)	1.99	Depositor
Minimum defocus (nm)	4.0	Depositor
Maximum defocus (nm)	7.0	Depositor
Magnification	45000.0	Depositor
Image detector	FEI FALCON III (4k x 4k)	Depositor
Maximum voxel value	127.000	Depositor
Minimum voxel value	-128.000	Depositor
Average voxel value	86.419	Depositor
Voxel value standard deviation	4.767	Depositor
Recommended contour level	Not applicable	
Tomogram size (\AA)	7707.8403, 6614.16, 989.52	wwPDB
Tomogram dimensions	592, 508, 76	wwPDB
Tomogram angles ($^\circ$)	90.0, 90.0, 90.0	wwPDB
Grid spacing (\AA)	13.02, 13.02, 13.02	Depositor

2 Tomogram visualisation [i](#)

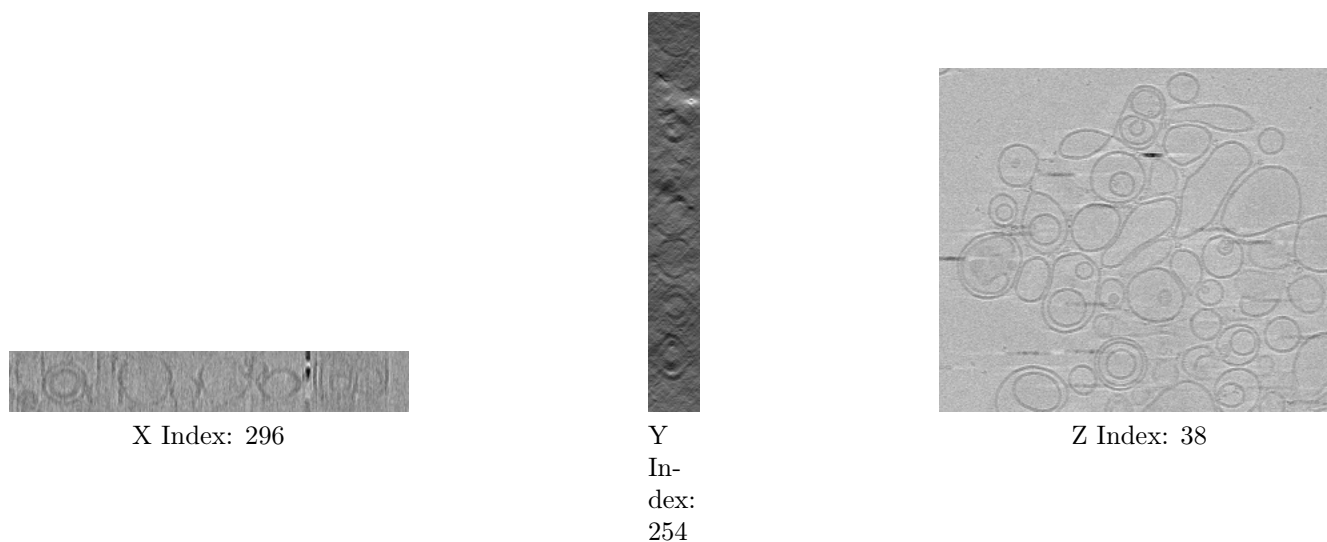
This section contains visualisations of the EMDB entry EMD-18651. These allow visual inspection of the internal detail of the tomogram and identification of artifacts.

2.1 Orthogonal projections [i](#)



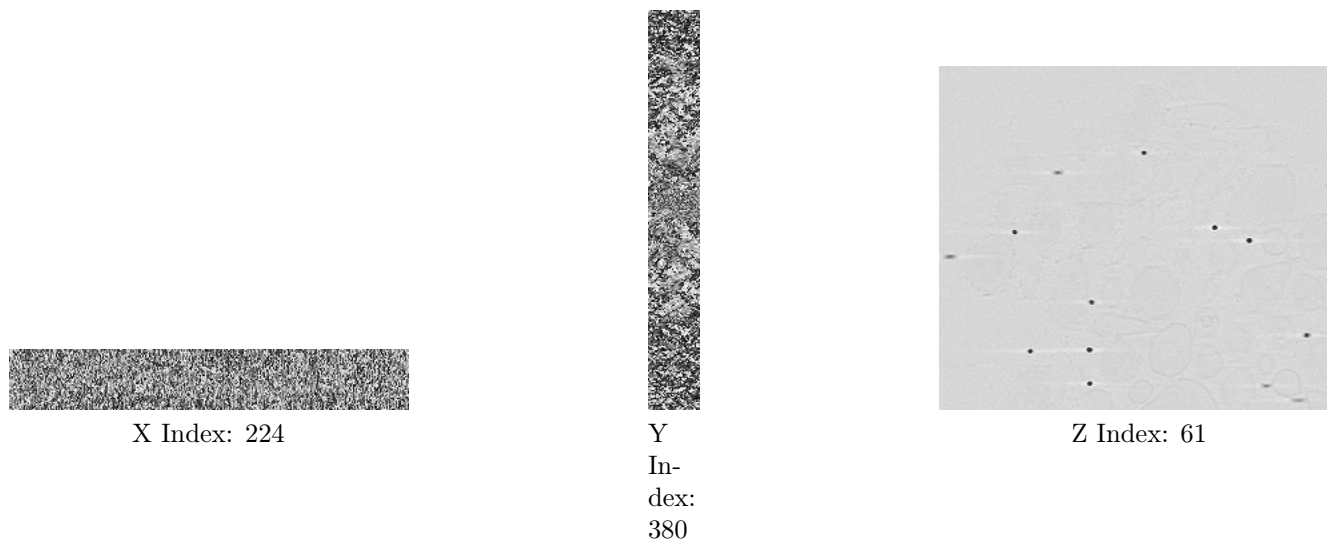
The images above show the tomogram projected in three orthogonal directions.

2.2 Central slices [i](#)



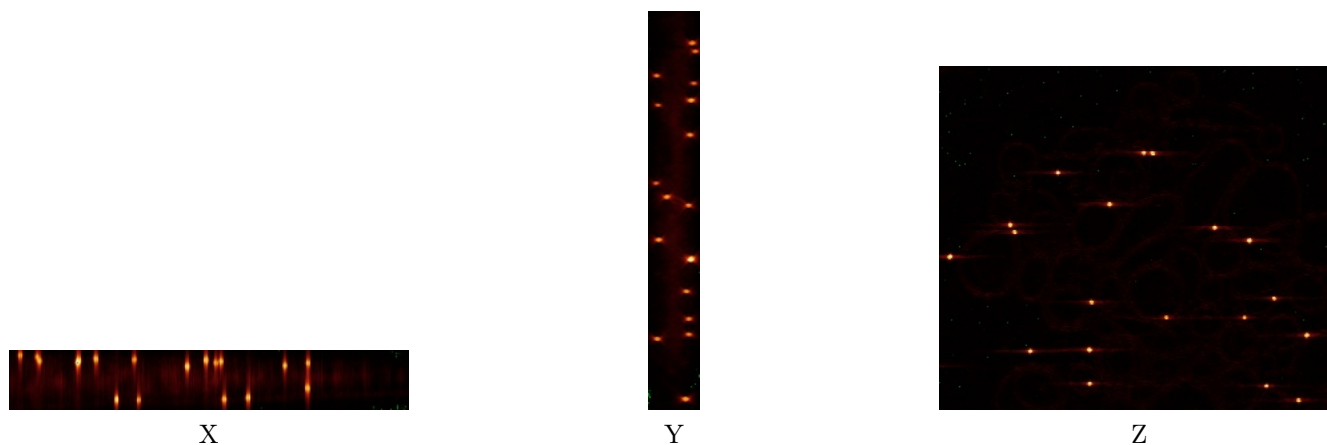
The images above show central slices of the tomogram in three orthogonal directions.

2.3 Largest variance slices [i](#)



The images above show the largest variance slices of the tomogram in three orthogonal directions.

2.4 Orthogonal standard-deviation projections (False-color) [i](#)



The images above show the tomogram projected in three orthogonal directions.

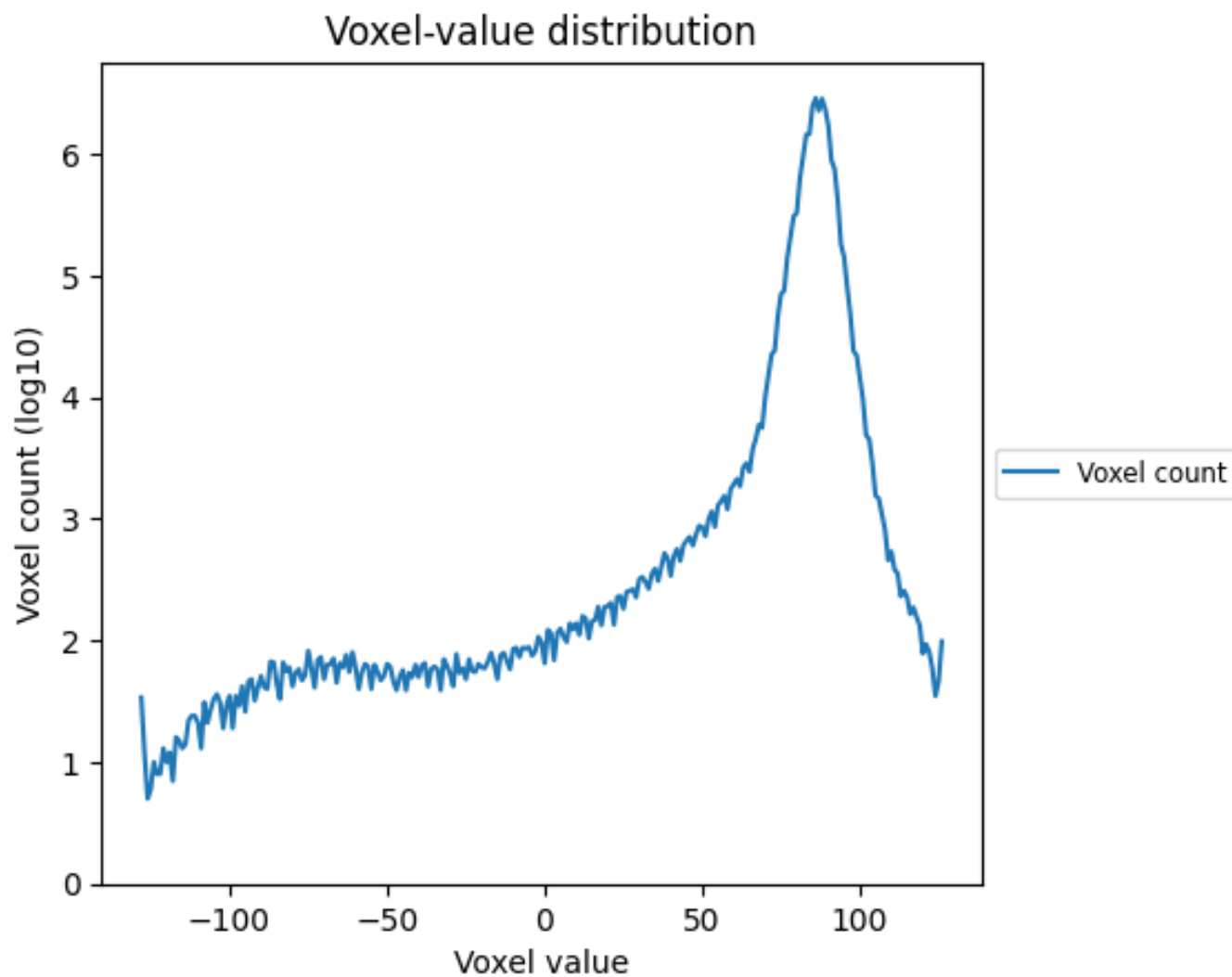
2.5 Mask visualisation [i](#)

This section was not generated. No masks/segmentation were deposited.

3 Tomogram analysis [i](#)

This section contains the results of statistical analysis of the tomogram.

3.1 Voxel-value distribution [i](#)



The voxel-value distribution is plotted in 128 intervals along the x-axis. The y-axis is logarithmic.