



Full wwPDB EM Validation Report ⓘ

Mar 18, 2024 – 01:26 pm GMT

EMDB ID : EMD-19194
Title : In situ cryo-electron tomogram of an autophagosome in the projection of an iPSC-derived neuron #2
Authors : Hoyer, M.J.; Capitanio, C.; Smith, I.R.; Paoli, J.C.; Bieber, A.; Jiang, Y.; Paulo, J.A.; Gonzalez-Lozano, M.A.; Baumeister, W.; Wilfling, F.; Schulman, B.A.; Harper, W.J.
Deposited on : 2023-12-20
Resolution : Not provided

This is a Full wwPDB EM Validation Report for a publicly released PDB entry.

We welcome your comments at validation@mail.wwpdb.org

A user guide is available at

<https://www.wwpdb.org/validation/2017/EMTomogramValidationReportHelp>
with specific help available everywhere you see the ⓘ symbol.

The types of validation reports are described at

<http://www.wwpdb.org/validation/2017/FAQs#types>.

The following versions of software and data (see [references ⓘ](#)) were used in the production of this report:

EMDB validation analysis : 0.0.1.dev70
Validation Pipeline (wwPDB-VP) : 2.36

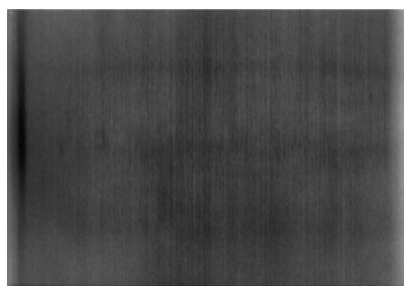
1 Experimental information

Property	Value	Source
EM reconstruction method	TOMOGRAPHY	Depositor
Imposed symmetry	Not Provided	
Number of tilted images used	50	Depositor
Resolution determination method	Not provided	
CTF correction method	Not provided	
Microscope	TFS KRIOS	Depositor
Voltage (kV)	300	Depositor
Electron dose ($e^-/\text{\AA}^2$)	2.0	Depositor
Minimum defocus (nm)	2.5	Depositor
Maximum defocus (nm)	3.5	Depositor
Magnification	42000.0	Depositor
Image detector	FEI FALCON IV (4k x 4k)	Depositor
Maximum voxel value	13.985	Depositor
Minimum voxel value	-20.884	Depositor
Average voxel value	0.150	Depositor
Voxel value standard deviation	0.843	Depositor
Recommended contour level	Not applicable	
Tomogram size (\AA)	12001.28, 12001.28, 8344.641	wwPDB
Tomogram dimensions	1024, 1024, 712	wwPDB
Tomogram angles ($^\circ$)	90.0, 90.0, 90.0	wwPDB
Grid spacing (\AA)	11.72, 11.72, 11.720001	Depositor

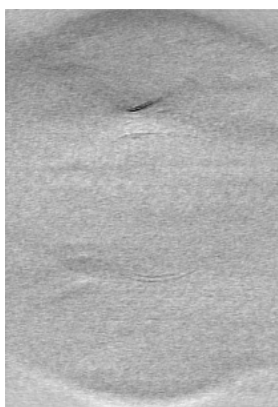
2 Tomogram visualisation [i](#)

This section contains visualisations of the EMDB entry EMD-19194. These allow visual inspection of the internal detail of the tomogram and identification of artifacts.

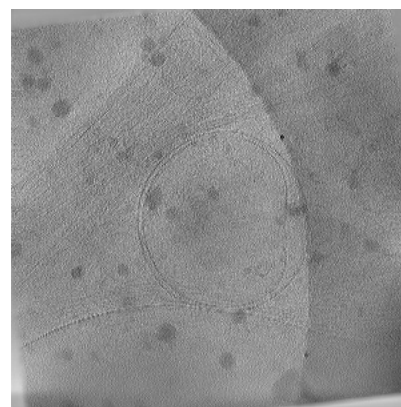
2.1 Orthogonal projections [i](#)



X



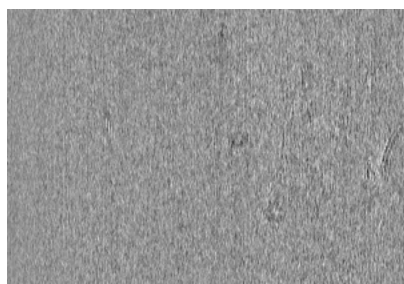
Y



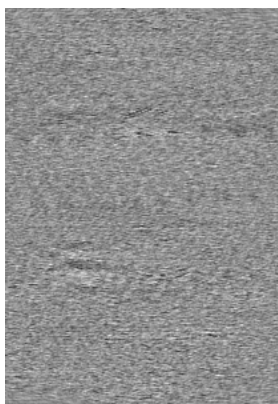
Z

The images above show the tomogram projected in three orthogonal directions.

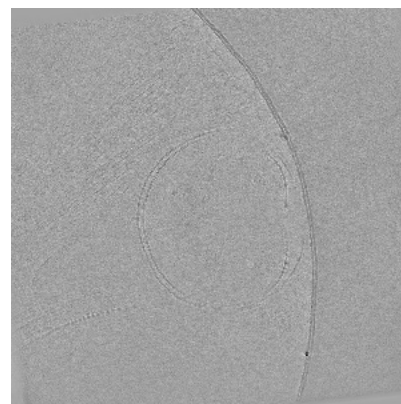
2.2 Central slices [i](#)



X Index: 512



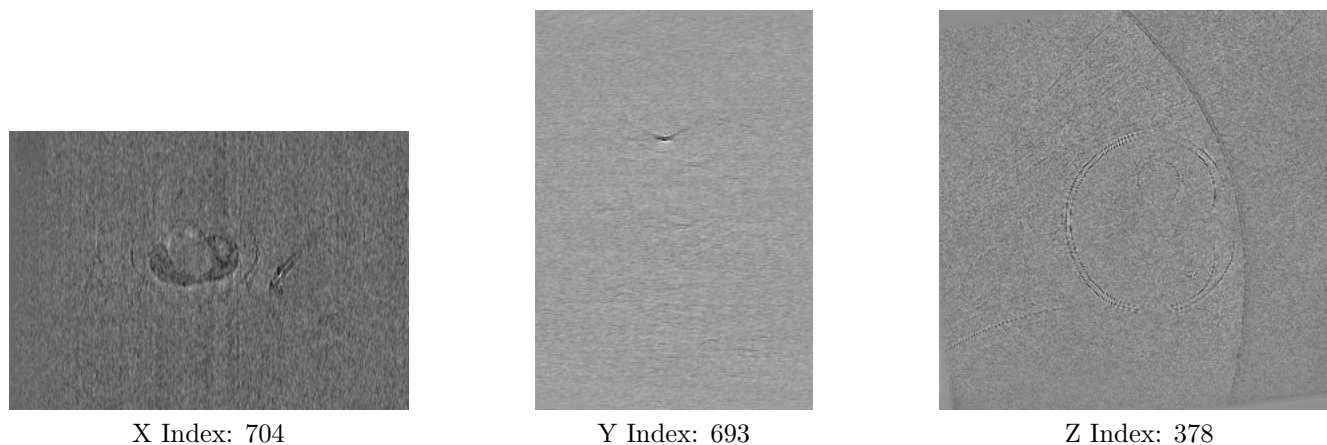
Y Index: 512



Z Index: 356

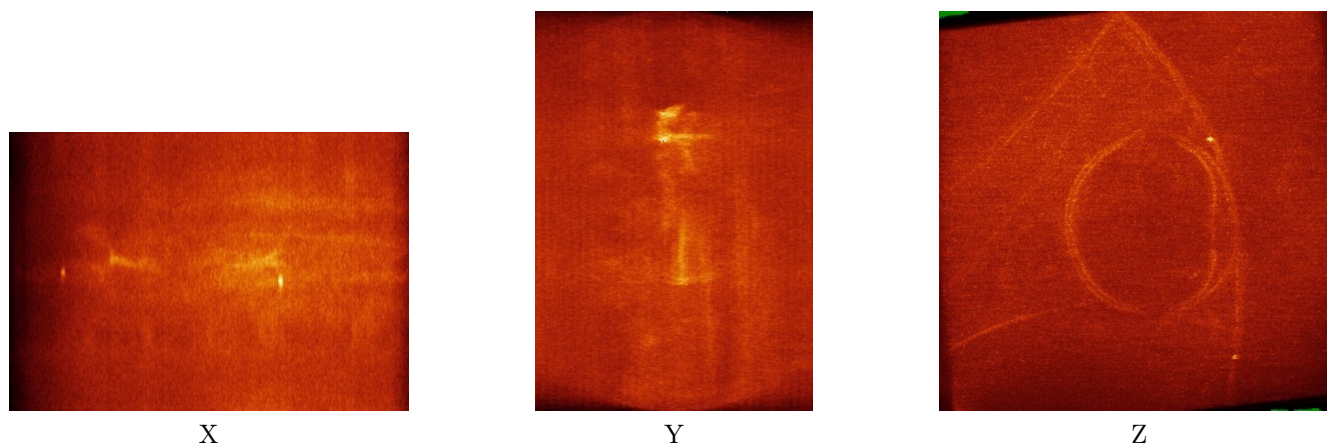
The images above show central slices of the tomogram in three orthogonal directions.

2.3 Largest variance slices [i](#)



The images above show the largest variance slices of the tomogram in three orthogonal directions.

2.4 Orthogonal standard-deviation projections (False-color) [i](#)



The images above show the tomogram projected in three orthogonal directions.

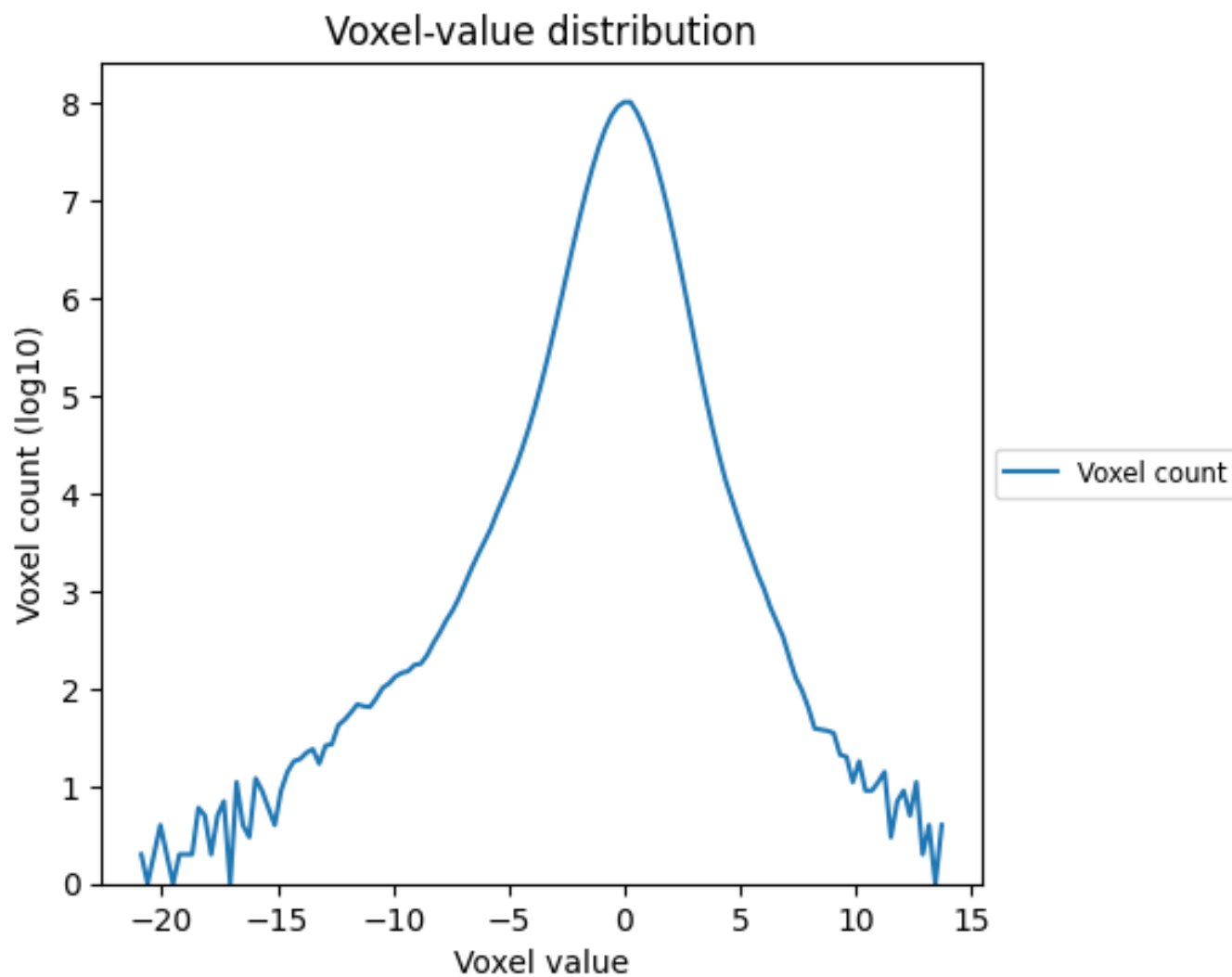
2.5 Mask visualisation [i](#)

This section was not generated. No masks/segmentation were deposited.

3 Tomogram analysis [i](#)

This section contains the results of statistical analysis of the tomogram.

3.1 Voxel-value distribution [i](#)



The voxel-value distribution is plotted in 128 intervals along the x-axis. The y-axis is logarithmic.