



Full wwPDB EM Validation Report ⓘ

Jan 4, 2022 – 02:05 PM EST

EMDB ID : EMD-25049
Title : Tomogram of mouse stereocilia containing PCDH15 molecules labeled with 39G7-AuNPs
Authors : Elferich, J.; Clark, S.; Ge, J.; Goehring, A.; Matsui, A.; Gouaux, E.
Deposited on : 2021-09-29
Resolution : Not provided

This is a Full wwPDB EM Validation Report for a publicly released PDB entry.

We welcome your comments at validation@mail.wwpdb.org

A user guide is available at

<https://www.wwpdb.org/validation/2017/EMTomogramValidationReportHelp>

with specific help available everywhere you see the ⓘ symbol.

The following versions of software and data (see [references ⓘ](#)) were used in the production of this report:

EMDB validation analysis : 0.0.0.dev97
Validation Pipeline (wwPDB-VP) : 2.25

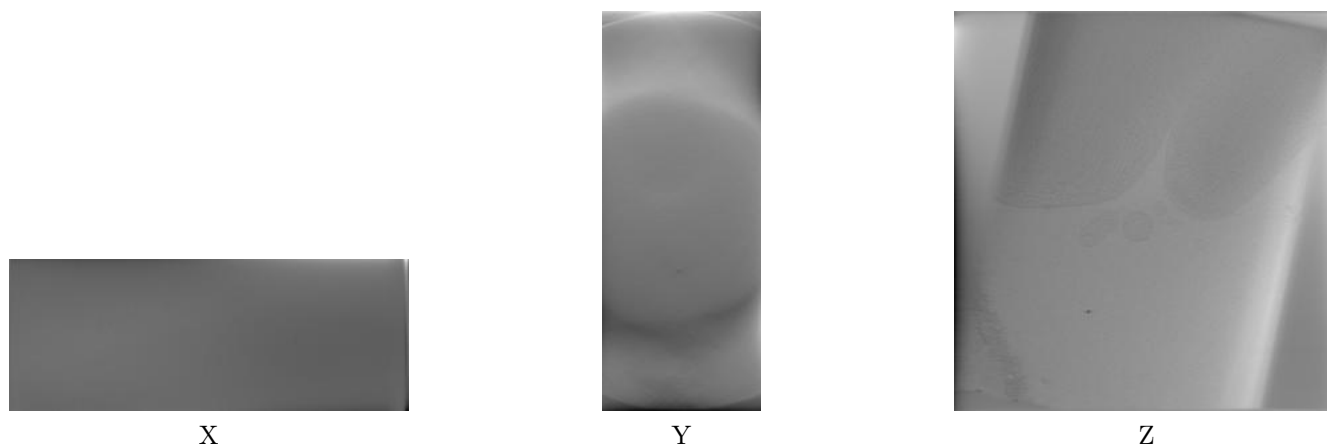
1 Experimental information

| Property | Value | Source |
|--------------------------------------|-------------------------------|-----------|
| EM reconstruction method | TOMOGRAPHY | Depositor |
| Imposed symmetry | Not Provided | |
| Number of tilted images used | 41 | Depositor |
| Resolution determination method | Not provided | |
| CTF correction method | Not provided | |
| Microscope | FEI TITAN KRIOS | Depositor |
| Voltage (kV) | 300 | Depositor |
| Electron dose ($e^-/\text{\AA}^2$) | 3.0 | Depositor |
| Minimum defocus (nm) | Not provided | |
| Maximum defocus (nm) | Not provided | |
| Magnification | Not provided | |
| Image detector | GATAN K3 BIOQUANTUM (6k x 4k) | Depositor |
| Maximum voxel value | 127.000 | Depositor |
| Minimum voxel value | -128.000 | Depositor |
| Average voxel value | 73.118 | Depositor |
| Voxel value standard deviation | 8.530 | Depositor |
| Recommended contour level | Not applicable | |
| Tomogram size (\AA) | 8594.3, 8924.85, 3384.832 | wwPDB |
| Tomogram dimensions | 1300, 1350, 512 | wwPDB |
| Tomogram angles ($^\circ$) | 90.0, 90.0, 90.0 | wwPDB |
| Grid spacing (\AA) | 6.611, 6.6109996, 6.611 | Depositor |

2 Tomogram visualisation [i](#)

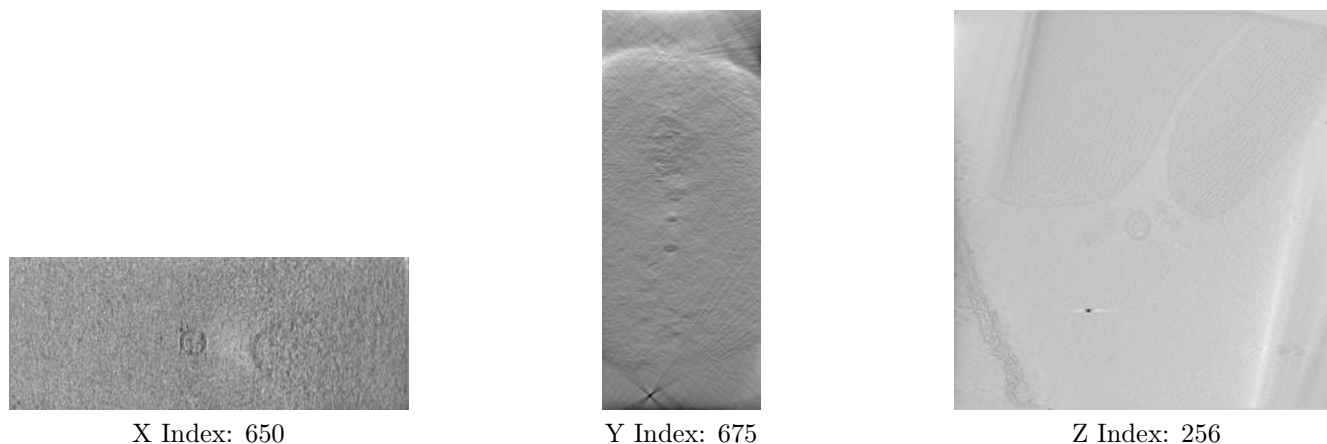
This section contains visualisations of the EMDB entry EMD-25049. These allow visual inspection of the internal detail of the tomogram and identification of artifacts.

2.1 Orthogonal projections [i](#)



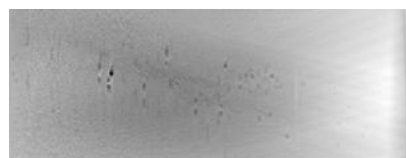
The images above show the tomogram projected in three orthogonal directions.

2.2 Central slices [i](#)

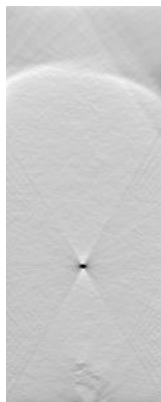


The images above show central slices of the tomogram in three orthogonal directions.

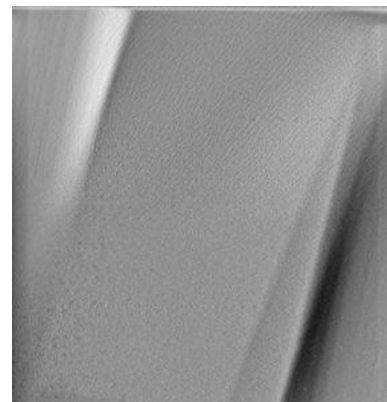
2.3 Largest variance slices [i](#)



X Index: 0



Y Index: 335



Z Index: 511

The images above show the largest variance slices of the tomogram in three orthogonal directions.

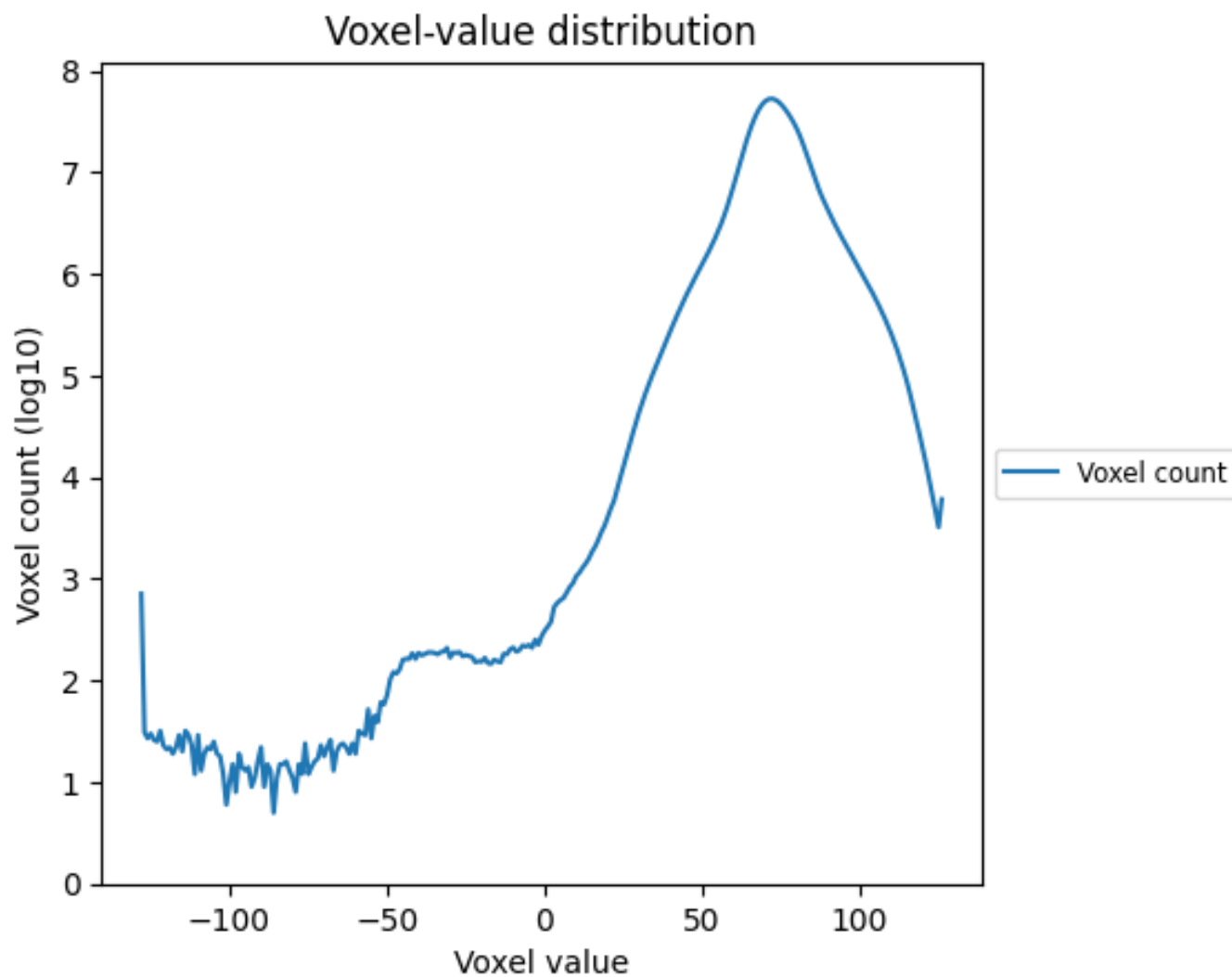
2.4 Mask visualisation [i](#)

This section was not generated. No masks/segmentation were deposited.

3 Tomogram analysis [i](#)

This section contains the results of statistical analysis of the tomogram.

3.1 Voxel-value distribution [i](#)



The voxel-value distribution is plotted in 128 intervals along the x-axis. The y-axis is logarithmic.