



wwPDB EM Validation Summary Report ⓘ

Jan 10, 2024 – 08:21 PM EST

EMDB ID : EMD-26204
Title : Ciliary 96-nm repeat unit from *Salpingoeca rosetta* (choanoflagellate), generated via cryo-electron tomography and subtomogram averaging
Authors : Pinskey, J.M.; Nicastro, D.
Deposited on : 2022-02-15
Resolution : 22.00 Å(reported)

This is a wwPDB EM Validation Summary Report for a publicly released PDB entry.

We welcome your comments at validation@mail.wwpdb.org

A user guide is available at

<https://www.wwpdb.org/validation/2017/EMTomogramValidationReportHelp>

with specific help available everywhere you see the ⓘ symbol.

The types of validation reports are described at

<http://www.wwpdb.org/validation/2017/FAQs#types>.

The following versions of software and data (see [references ⓘ](#)) were used in the production of this report:

EMDB validation analysis : 0.0.1.dev70
Validation Pipeline (wwPDB-VP) : 2.36

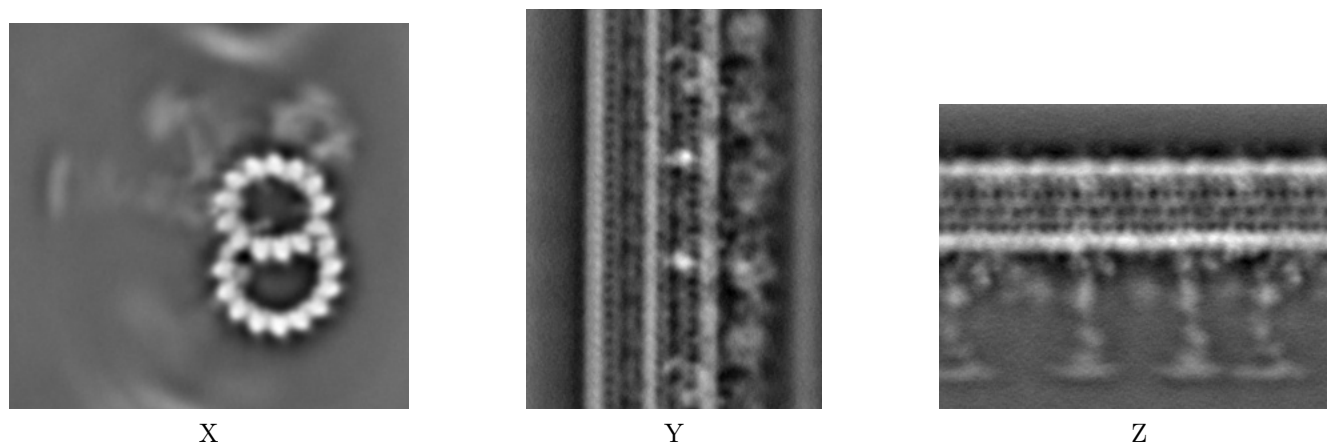
1 Experimental information

Property	Value	Source
EM reconstruction method	TOMOGRAPHY	Depositor
Imposed symmetry	Not Provided	
Number of tilted images used	61	Depositor
Resolution determination method	FSC 0.5 CUT-OFF	Depositor
CTF correction method	Not provided	
Microscope	FEI TITAN KRIOS	Depositor
Voltage (kV)	300	Depositor
Electron dose ($e^-/\text{\AA}^2$)	1.6	Depositor
Minimum defocus (nm)	0.5	Depositor
Maximum defocus (nm)	0.5	Depositor
Magnification	Not provided	
Image detector	GATAN K3 BIOQUANTUM (6k x 4k)	Depositor
Maximum voxel value	135.139	Depositor
Minimum voxel value	123.119	Depositor
Average voxel value	128.440	Depositor
Voxel value standard deviation	1.138	Depositor
Recommended contour level	Not applicable	
Tomogram size (\AA)	1197.38, 913.79, 882.28	wwPDB
Tomogram dimensions	380, 290, 280	wwPDB
Tomogram angles ($^\circ$)	90.0, 90.0, 90.0	wwPDB
Grid spacing (\AA)	3.151, 3.151, 3.151	Depositor

2 Tomogram visualisation [i](#)

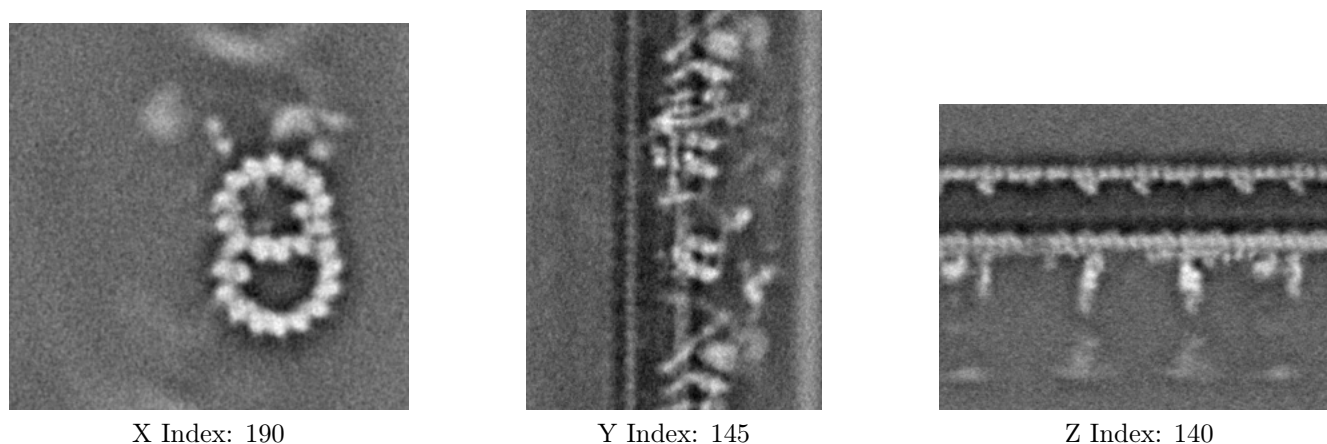
This section contains visualisations of the EMDB entry EMD-26204. These allow visual inspection of the internal detail of the tomogram and identification of artifacts.

2.1 Orthogonal projections [i](#)



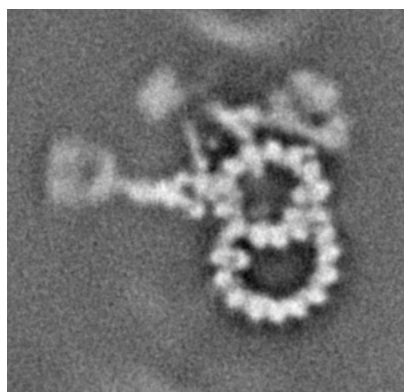
The images above show the tomogram projected in three orthogonal directions.

2.2 Central slices [i](#)

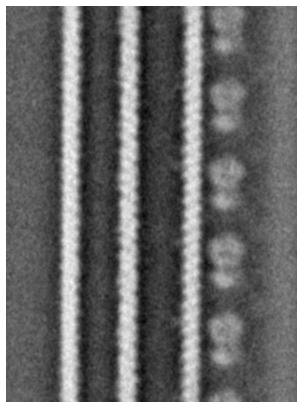


The images above show central slices of the tomogram in three orthogonal directions.

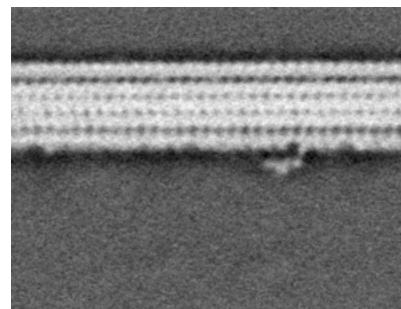
2.3 Largest variance slices [i](#)



X Index: 139



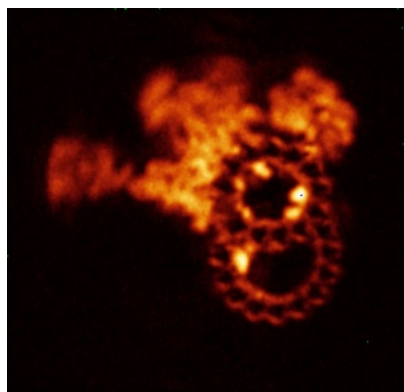
Y Index: 195



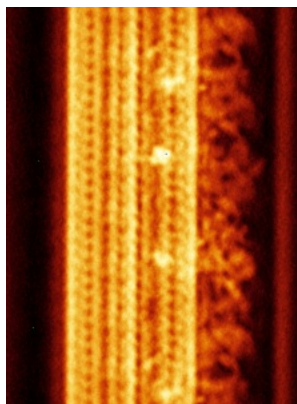
Z Index: 118

The images above show the largest variance slices of the tomogram in three orthogonal directions.

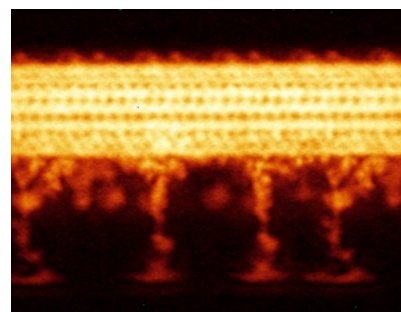
2.4 Orthogonal standard-deviation projections (False-color) [i](#)



X



Y



Z

The images above show the tomogram projected in three orthogonal directions.

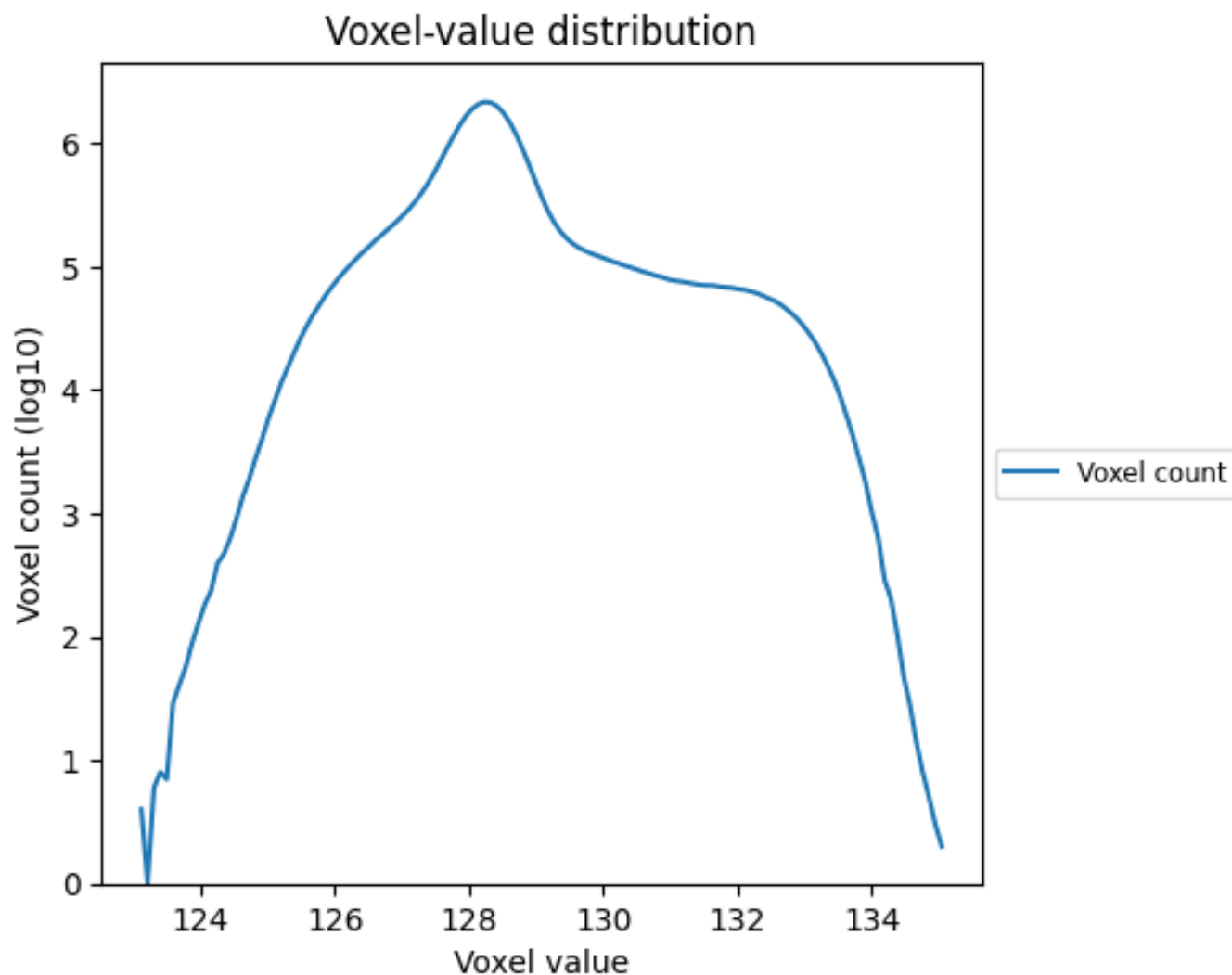
2.5 Mask visualisation [i](#)

This section was not generated. No masks/segmentation were deposited.

3 Tomogram analysis [i](#)

This section contains the results of statistical analysis of the tomogram.

3.1 Voxel-value distribution [i](#)



The voxel-value distribution is plotted in 128 intervals along the x-axis. The y-axis is logarithmic.