



Full wwPDB EM Validation Report ⓘ

Mar 31, 2021 – 10:28 am BST

EMDB ID : EMD-2889
Title : Cryo-Molecular electron tomography of human non-immune soluble pentameric IgM
Authors : Akhouri, R.R.; Goel, S.; Furusho, H.; Skoglund, U.; Wahlgren, M.
Deposited on : 2015-02-08
Resolution : 20.00 Å(reported)

This is a Full wwPDB EM Validation Report for a publicly released PDB entry.

We welcome your comments at validation@mail.wwpdb.org

A user guide is available at

<https://www.wwpdb.org/validation/2017/EMTomogramValidationReportHelp>

with specific help available everywhere you see the ⓘ symbol.

The following versions of software and data (see [references ⓘ](#)) were used in the production of this report:

EMDB validation analysis : 0.0.0.dev75
Validation Pipeline (wwPDB-VP) : 2.18

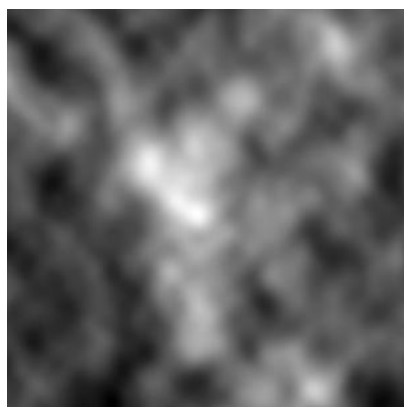
1 Experimental information ⓘ

Property	Value	Source
EM reconstruction method	TOMOGRAPHY	Depositor
Imposed symmetry	Not Provided	
Number of tilted images used	281	Depositor
Resolution determination method	Not provided	
CTF correction method	each frame	Depositor
Microscope	FEI TITAN KRIOS	Depositor
Voltage (kV)	300	Depositor
Electron dose ($e^-/\text{\AA}^2$)	40	Depositor
Minimum defocus (nm)	0.0007	Depositor
Maximum defocus (nm)	0.0015	Depositor
Magnification	37000.0	Depositor
Image detector	FEI FALCON II (4k x 4k)	Depositor
Maximum voxel value	0.008	Depositor
Minimum voxel value	0.001	Depositor
Average voxel value	0.003	Depositor
Voxel value standard deviation	0.001	Depositor
Recommended contour level	0.0042	Depositor
Tomogram size (Å)	290.176, 290.176, 290.176	wwPDB
Tomogram dimensions	128, 128, 128	wwPDB
Tomogram angles (°)	90.0, 90.0, 90.0	wwPDB
Grid spacing (Å)	2.267, 2.267, 2.267	Depositor

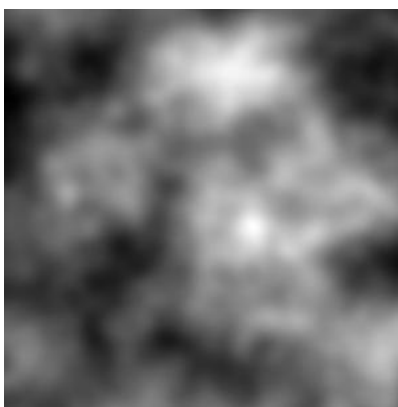
2 Tomogram visualisation [i](#)

This section contains visualisations of the EMDB entry EMD-2889. These allow visual inspection of the internal detail of the tomogram and identification of artifacts.

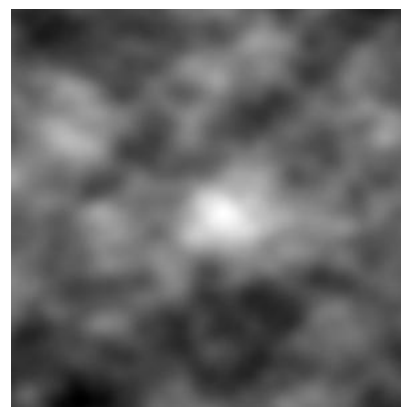
2.1 Orthogonal projections [i](#)



X



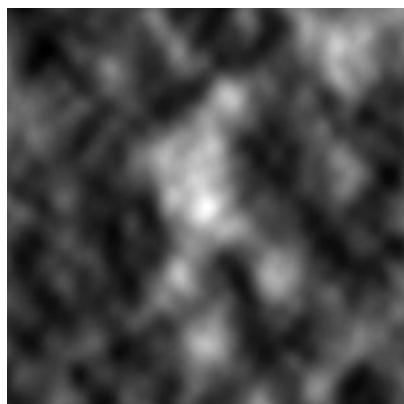
Y



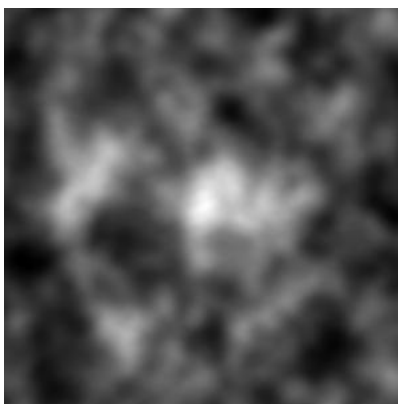
Z

The images above show the tomogram projected in three orthogonal directions.

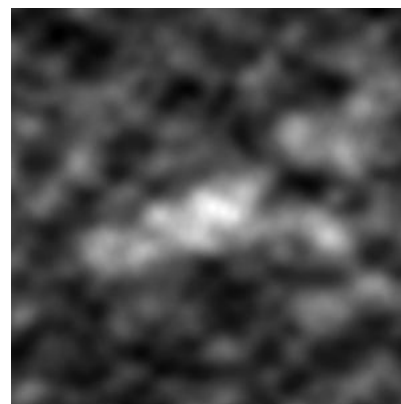
2.2 Central slices [i](#)



X Index: 64



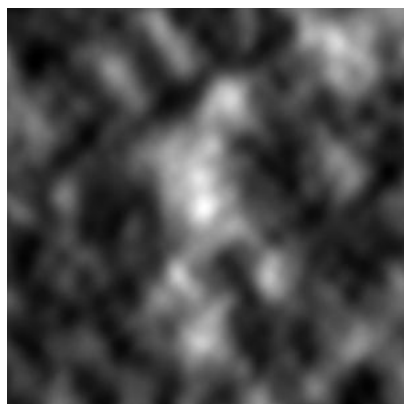
Y Index: 64



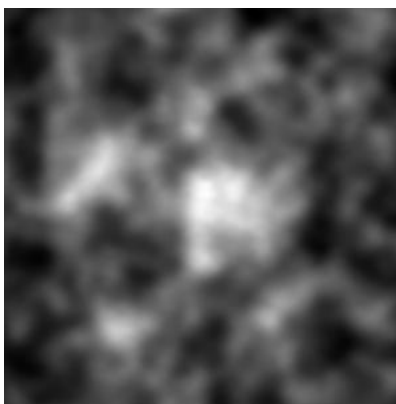
Z Index: 64

The images above show central slices of the tomogram in three orthogonal directions.

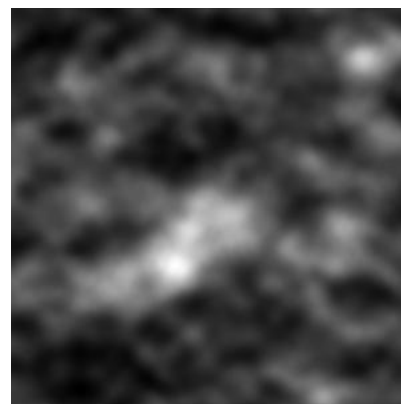
2.3 Largest variance slices [i](#)



X Index: 67



Y Index: 61



Z Index: 76

The images above show the largest variance slices of the tomogram in three orthogonal directions.

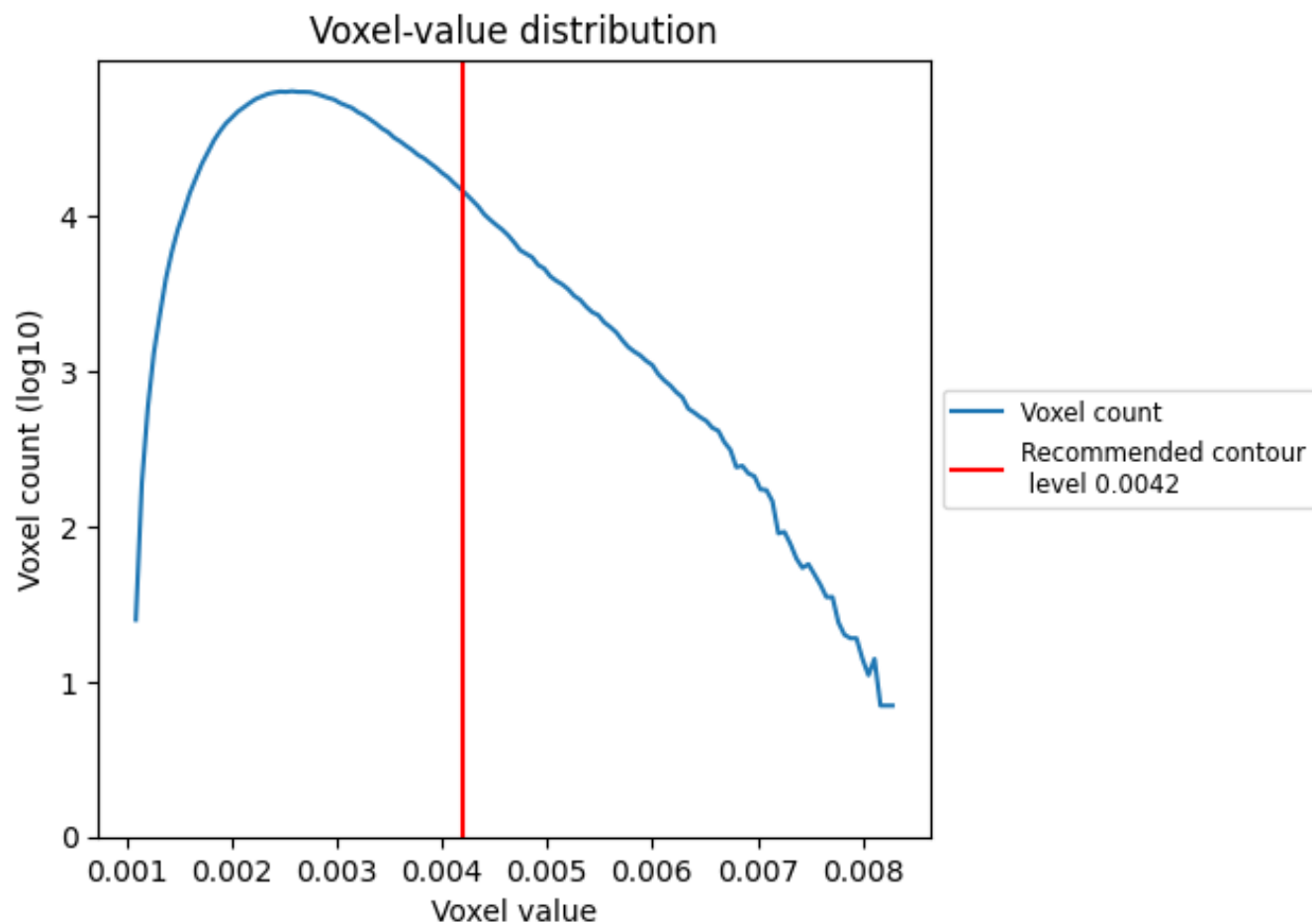
2.4 Mask visualisation [i](#)

This section was not generated. No masks/segmentation were deposited.

3 Tomogram analysis [i](#)

This section contains the results of statistical analysis of the tomogram.

3.1 Voxel-value distribution [i](#)



The voxel-value distribution is plotted in 128 intervals along the x-axis. The y-axis is logarithmic.