



## Full wwPDB EM Validation Report ⓘ

Mar 31, 2021 – 10:28 am BST

EMDB ID : EMD-2916  
Title : Cryo-electron tomograms of EB1 conjugated to gold nanoparticles, in interaction with growing microtubule ends  
Authors : Guesdon, A.; Bazile, F.; Buey, R.M.; Mohan, R.; Monier, S.; Angevin, M.; Heichette, C.; Tampe, R.; Duchesne, L.; Akhmanova, A.; Steinmetz, M.O.; Chretien, D.  
Deposited on : 2015-02-20  
Resolution : Not provided

This is a Full wwPDB EM Validation Report for a publicly released PDB entry.

We welcome your comments at [validation@mail.wwpdb.org](mailto:validation@mail.wwpdb.org)

A user guide is available at

<https://www.wwpdb.org/validation/2017/EMTomogramValidationReportHelp>  
with specific help available everywhere you see the ⓘ symbol.

---

The following versions of software and data (see [references ⓘ](#)) were used in the production of this report:

EMDB validation analysis : 0.0.0.dev75  
Validation Pipeline (wwPDB-VP) : 2.18

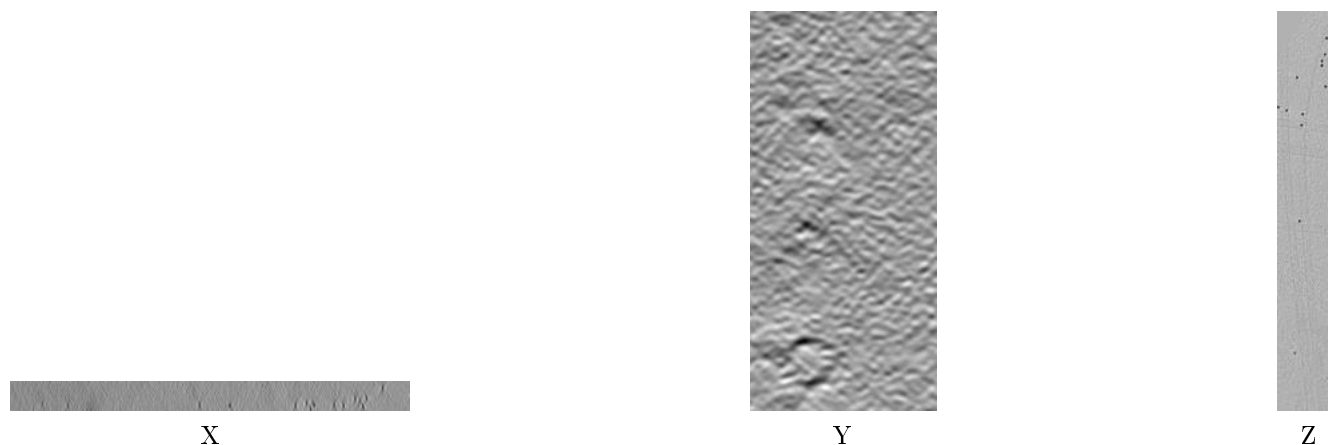
# 1 Experimental information ⓘ

Property	Value	Source
EM reconstruction method	TOMOGRAPHY	Depositor
Imposed symmetry	Not Provided	
Number of tilted images used	75	Depositor
Resolution determination method	Not provided	
CTF correction method	Not provided	
Microscope	FEI TECNAI 20	Depositor
Voltage (kV)	200	Depositor
Electron dose ( $e^-/\text{\AA}^2$ )	0.3	Depositor
Minimum defocus (nm)	1.5	Depositor
Maximum defocus (nm)	1.5	Depositor
Magnification	25000.0	Depositor
Image detector	GATAN ULTRASCAN 1000 (2k x 2k)	Depositor
Maximum voxel value	7507.000	Depositor
Minimum voxel value	-12036.000	Depositor
Average voxel value	302.844	Depositor
Voxel value standard deviation	683.654	Depositor
Recommended contour level	Not applicable	
Tomogram size (Å)	2090.0, 13537.5, 969.0	wwPDB
Tomogram dimensions	220, 1425, 102	wwPDB
Tomogram angles (°)	90.0, 90.0, 90.0	wwPDB
Grid spacing (Å)	9.5, 9.5, 9.5	Depositor

## 2 Tomogram visualisation [i](#)

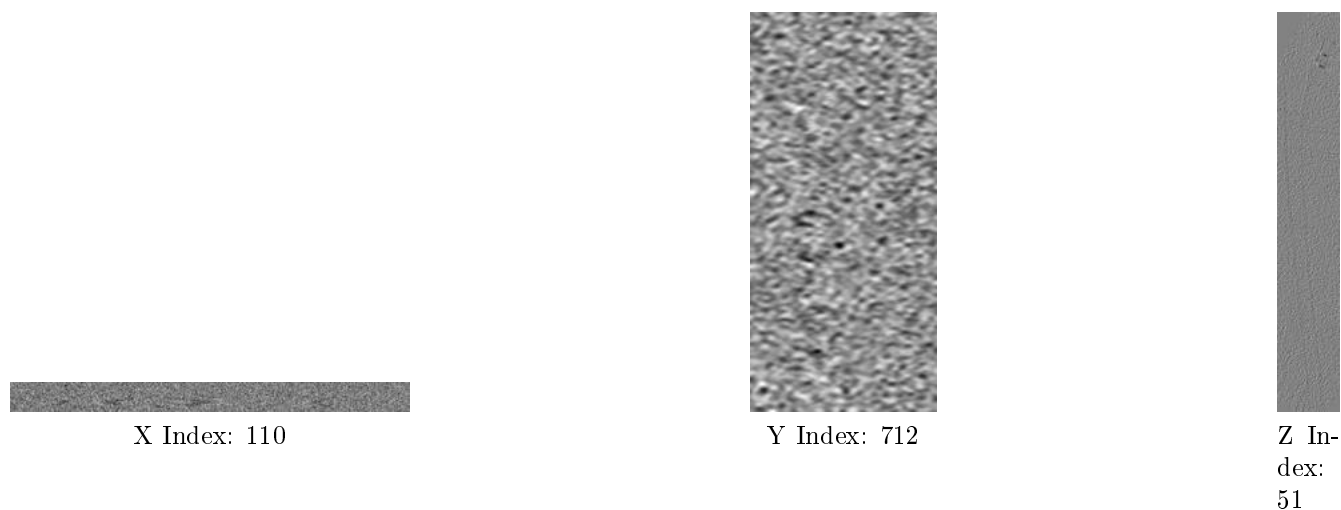
This section contains visualisations of the EMDB entry EMD-2916. These allow visual inspection of the internal detail of the tomogram and identification of artifacts.

### 2.1 Orthogonal projections [i](#)



The images above show the tomogram projected in three orthogonal directions.

### 2.2 Central slices [i](#)

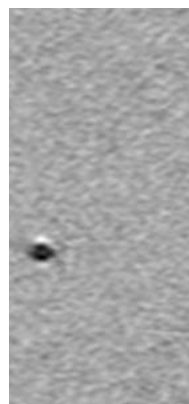


The images above show central slices of the tomogram in three orthogonal directions.

## 2.3 Largest variance slices [i](#)



X Index: 157



Y Index: 1015

Z Index:  
19

The images above show the largest variance slices of the tomogram in three orthogonal directions.

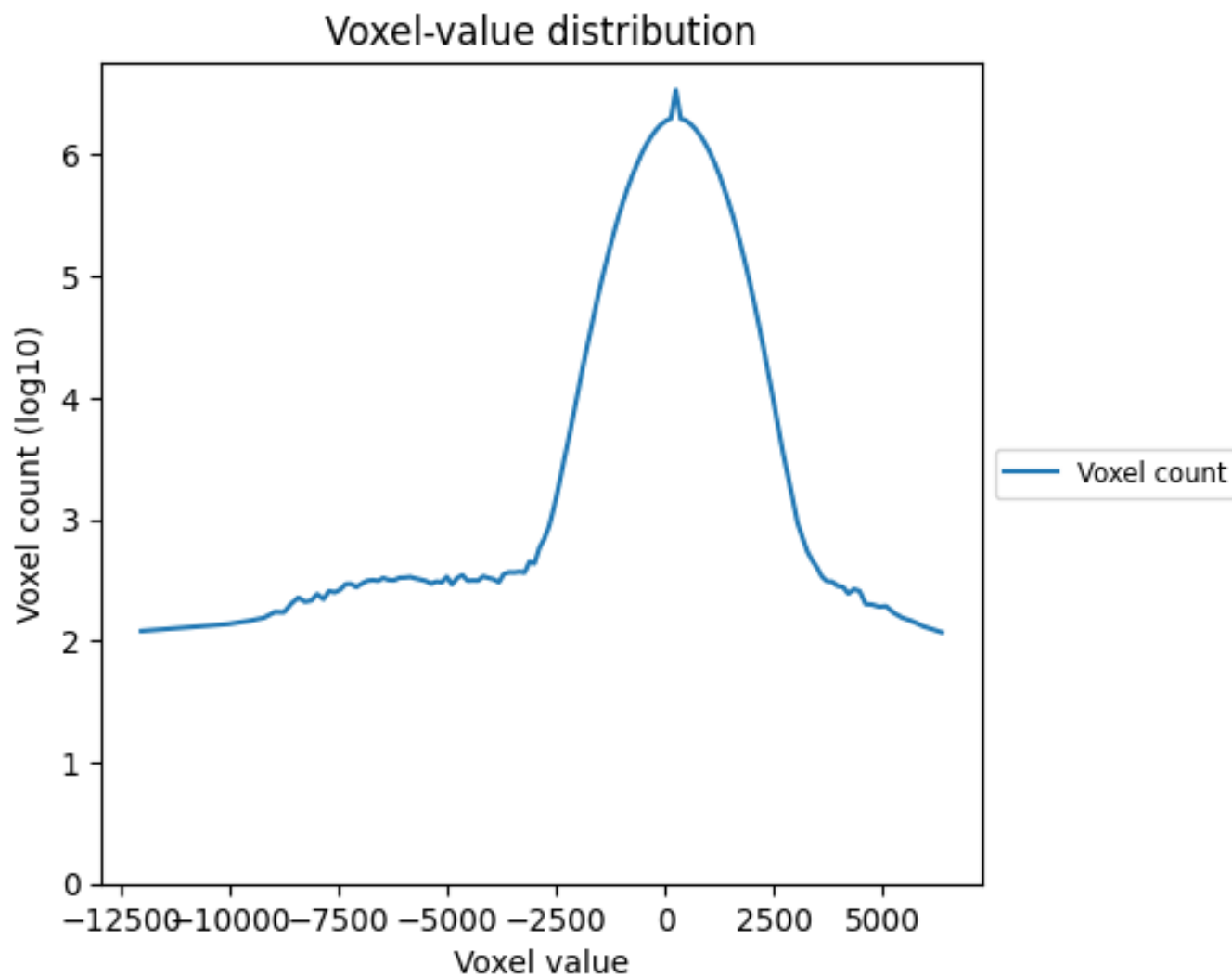
## 2.4 Mask visualisation [i](#)

This section was not generated. No masks/segmentation were deposited.

### 3 Tomogram analysis [i](#)

This section contains the results of statistical analysis of the tomogram.

#### 3.1 Voxel-value distribution [i](#)



The voxel-value distribution is plotted in 128 intervals along the x-axis. The y-axis is logarithmic.