



Full wwPDB EM Validation Report ⓘ

Mar 31, 2021 – 10:32 am BST

EMDB ID : EMD-3102
Title : Cryo-electron tomography and subtomogram averaging of Rous-Sarcoma-Virus
deltaMBD virus-like particles
Authors : Schur, F.K.M.; Dick, R.A.; Hagen, W.J.H.; Vogt, V.M.; Briggs, J.A.G.
Deposited on : 2015-07-20
Resolution : Not provided

This is a Full wwPDB EM Validation Report for a publicly released PDB entry.

We welcome your comments at validation@mail.wwpdb.org

A user guide is available at

<https://www.wwpdb.org/validation/2017/EMTomogramValidationReportHelp>

with specific help available everywhere you see the ⓘ symbol.

The following versions of software and data (see [references ⓘ](#)) were used in the production of this report:

EMDB validation analysis : 0.0.0.dev75
Validation Pipeline (wwPDB-VP) : 2.18

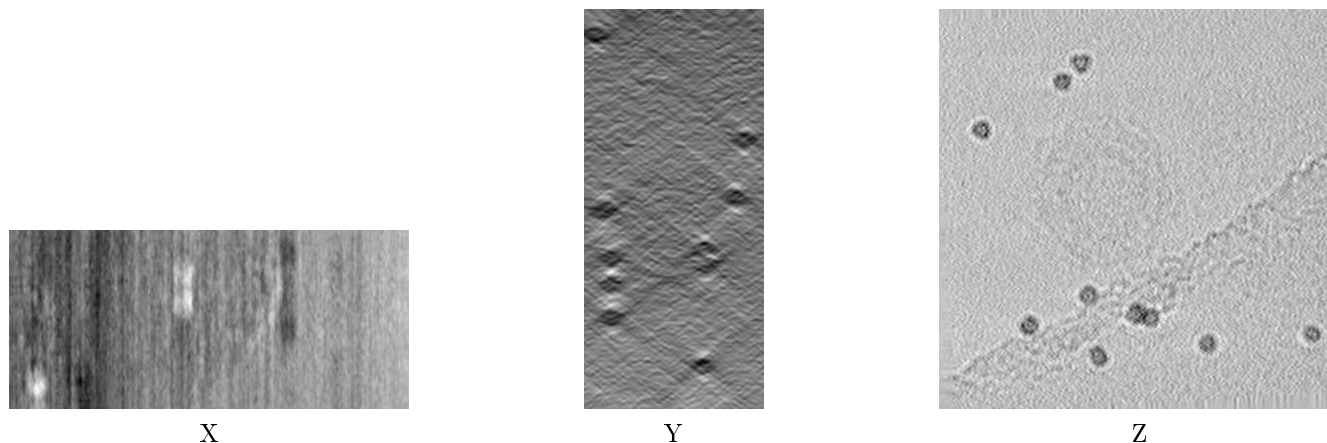
1 Experimental information

| Property | Value | Source |
|--------------------------------------|------------------------------------|-----------|
| EM reconstruction method | TOMOGRAPHY | Depositor |
| Imposed symmetry | Not Provided | |
| Number of tilted images used | 31 | Depositor |
| Resolution determination method | Not provided | |
| CTF correction method | Phase flipping of individual tilts | Depositor |
| Microscope | FEI TITAN KRIOS | Depositor |
| Voltage (kV) | 200 | Depositor |
| Electron dose ($e^-/\text{\AA}^2$) | 34 | Depositor |
| Minimum defocus (nm) | 1.5 | Depositor |
| Maximum defocus (nm) | 5.0 | Depositor |
| Magnification | 81000.0 | Depositor |
| Image detector | GATAN MULTISCAN | Depositor |
| Maximum voxel value | 3020.000 | Depositor |
| Minimum voxel value | -5516.000 | Depositor |
| Average voxel value | 92.935 | Depositor |
| Voxel value standard deviation | 268.665 | Depositor |
| Recommended contour level | Not applicable | |
| Tomogram size (\AA) | 2118.912, 2118.912, 943.57806 | wwPDB |
| Tomogram dimensions | 256, 256, 114 | wwPDB |
| Tomogram angles ($^\circ$) | 90.0, 90.0, 90.0 | wwPDB |
| Grid spacing (\AA) | 8.277, 8.277, 8.277 | Depositor |

2 Tomogram visualisation [i](#)

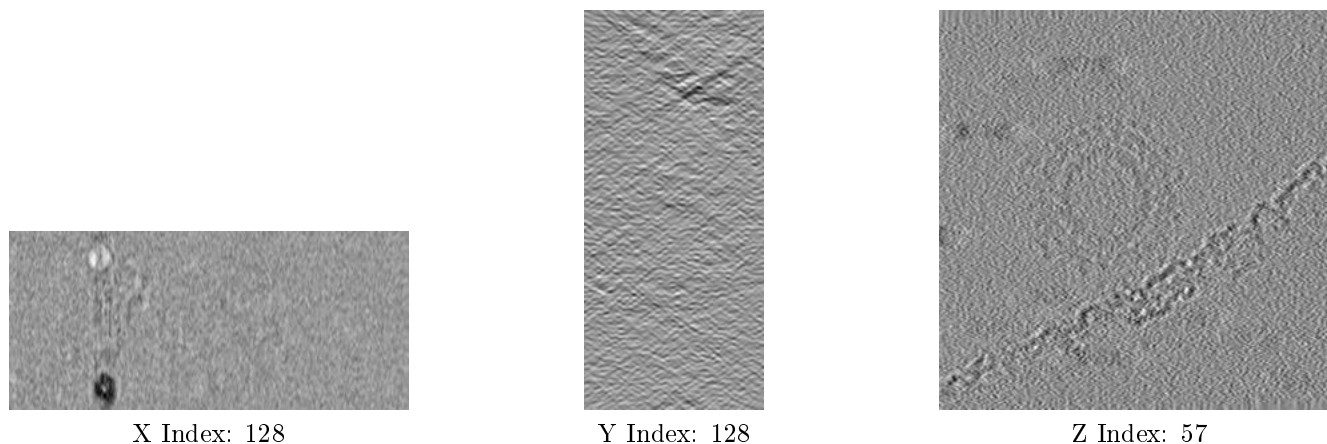
This section contains visualisations of the EMDB entry EMD-3102. These allow visual inspection of the internal detail of the tomogram and identification of artifacts.

2.1 Orthogonal projections [i](#)



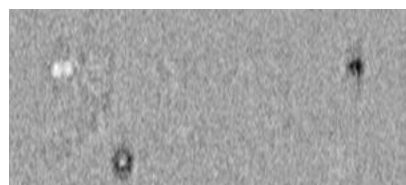
The images above show the tomogram projected in three orthogonal directions.

2.2 Central slices [i](#)

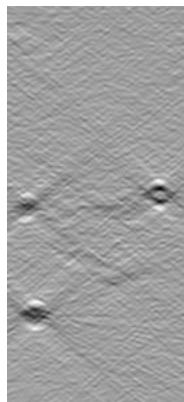


The images above show central slices of the tomogram in three orthogonal directions.

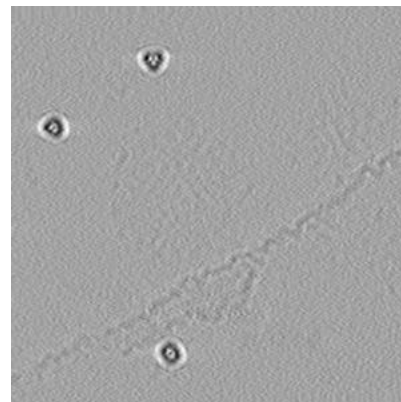
2.3 Largest variance slices [i](#)



X Index: 94



Y Index: 56



Z Index: 76

The images above show the largest variance slices of the tomogram in three orthogonal directions.

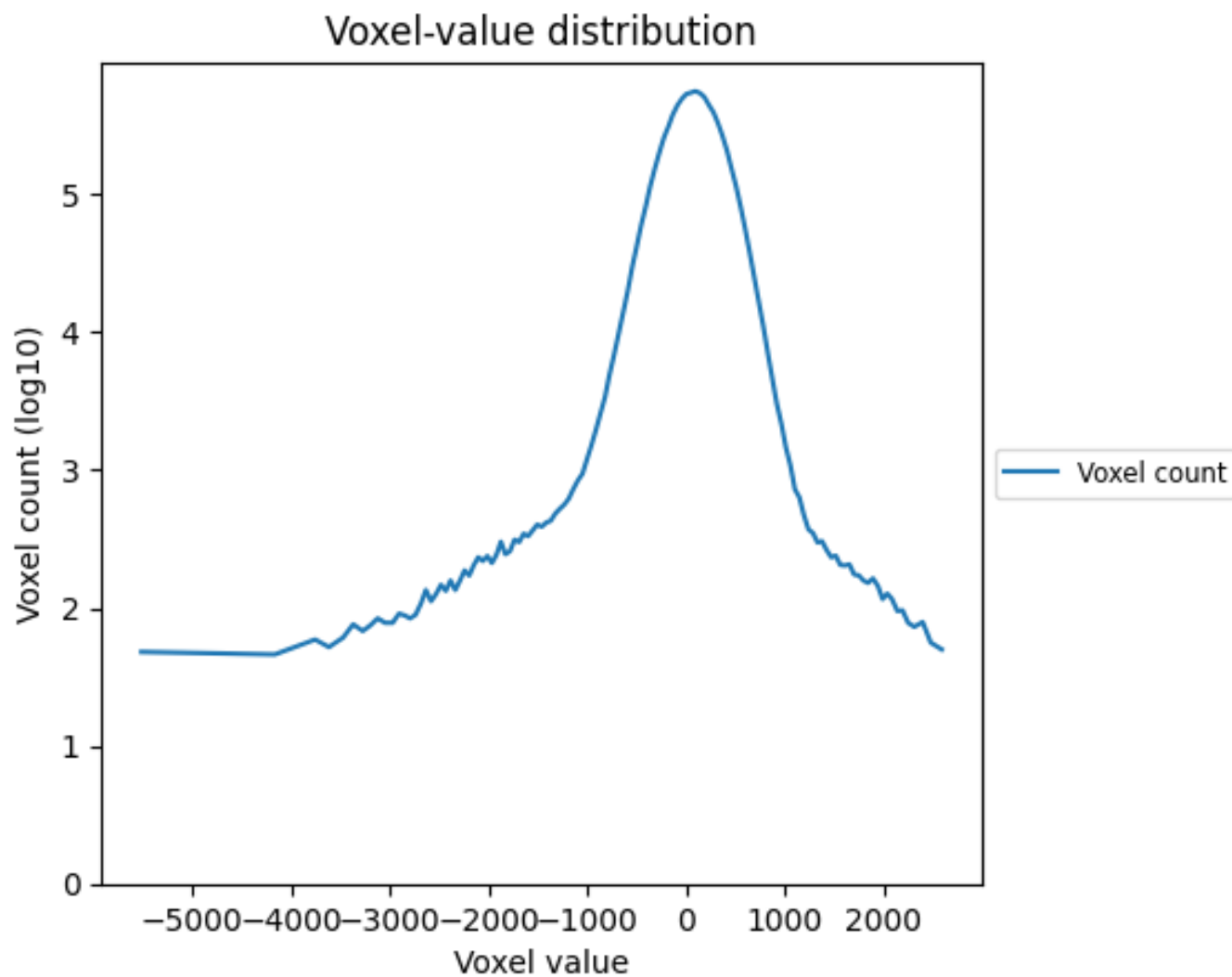
2.4 Mask visualisation [i](#)

This section was not generated. No masks/segmentation were deposited.

3 Tomogram analysis [i](#)

This section contains the results of statistical analysis of the tomogram.

3.1 Voxel-value distribution [i](#)



The voxel-value distribution is plotted in 128 intervals along the x-axis. The y-axis is logarithmic.