



wwPDB EM Validation Summary Report ⓘ

Mar 31, 2021 – 11:06 am BST

EMDB ID : EMD-4562
Title : Subtomogram average of T6SS membrane complex TssJLM
Authors : Kooger, R.; Pilhofer, M.
Deposited on : 2019-01-21
Resolution : 25.00 Å(reported)

This is a wwPDB EM Validation Summary Report for a publicly released PDB entry.

We welcome your comments at validation@mail.wwpdb.org

A user guide is available at

<https://www.wwpdb.org/validation/2017/EMMapValidationReportHelp>

with specific help available everywhere you see the ⓘ symbol.

The following versions of software and data (see [references ⓘ](#)) were used in the production of this report:

EMDB validation analysis : 0.0.0.dev75
Validation Pipeline (wwPDB-VP) : 2.18

1 Experimental information ⓘ

Property	Value	Source
EM reconstruction method	SUBTOMOGRAM AVERAGING	Depositor
Imposed symmetry	POINT, C5	Depositor
Number of subtomograms used	23500	Depositor
Resolution determination method	FSC 0.5 CUT-OFF	Depositor
CTF correction method	Not provided	
Microscope	FEI TITAN KRIOS	Depositor
Voltage (kV)	300	Depositor
Electron dose ($e^-/\text{\AA}^2$)	1.3	Depositor
Minimum defocus (nm)	Not provided	
Maximum defocus (nm)	Not provided	
Magnification	Not provided	
Image detector	GATAN K2 SUMMIT (4k x 4k)	Depositor
Maximum map value	138.410	Depositor
Minimum map value	106.610	Depositor
Average map value	118.703	Depositor
Map value standard deviation	2.409	Depositor
Recommended contour level	113.0	Depositor
Map size (Å)	303.512, 482.86, 303.512	wwPDB
Map dimensions	44, 70, 44	wwPDB
Map angles (°)	90.0, 90.0, 90.0	wwPDB
Pixel spacing (Å)	6.898, 6.898, 6.898	Depositor

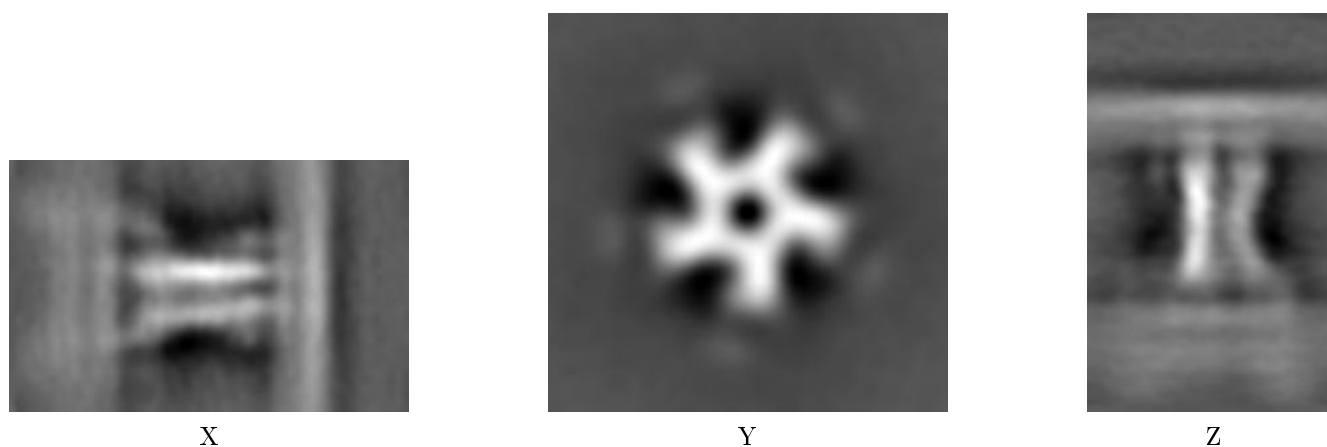
2 Map visualisation [i](#)

This section contains visualisations of the EMDB entry EMD-4562. These allow visual inspection of the internal detail of the map and identification of artifacts.

No raw map or half-maps were deposited for this entry and therefore no images, graphs, etc. pertaining to the raw map can be shown.

2.1 Orthogonal projections [i](#)

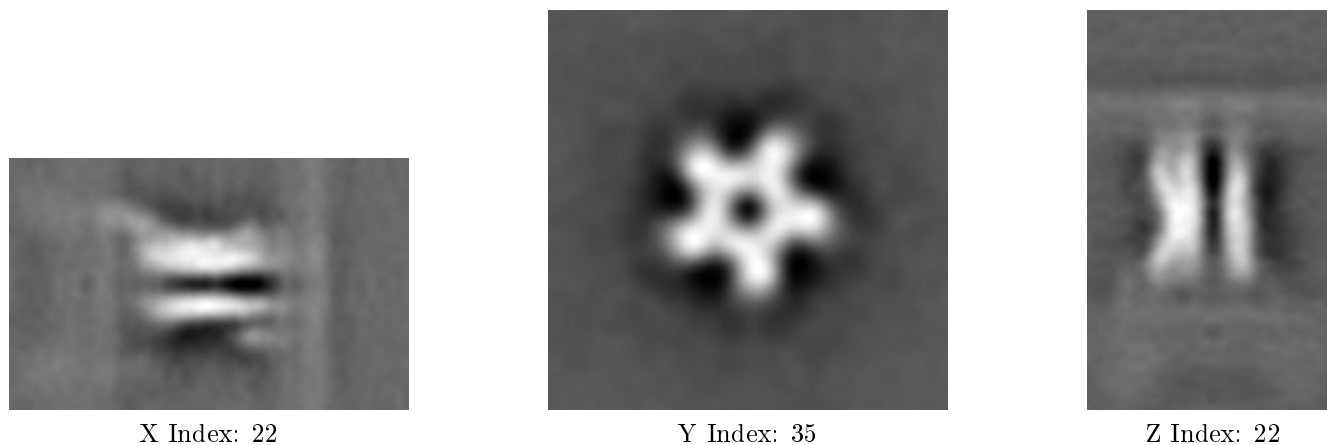
2.1.1 Primary map



The images above show the map projected in three orthogonal directions.

2.2 Central slices [i](#)

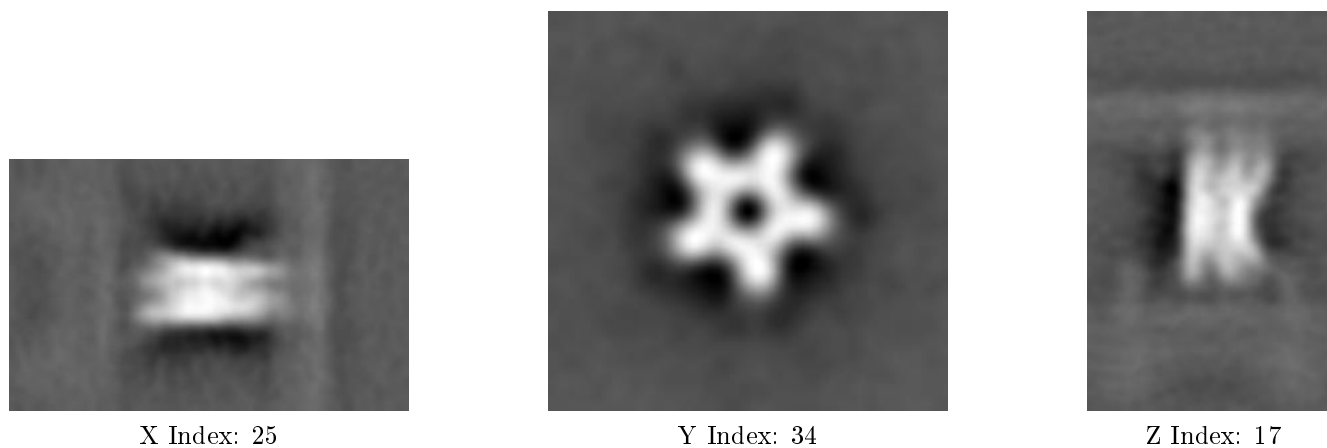
2.2.1 Primary map



The images above show central slices of the map in three orthogonal directions.

2.3 Largest variance slices [i](#)

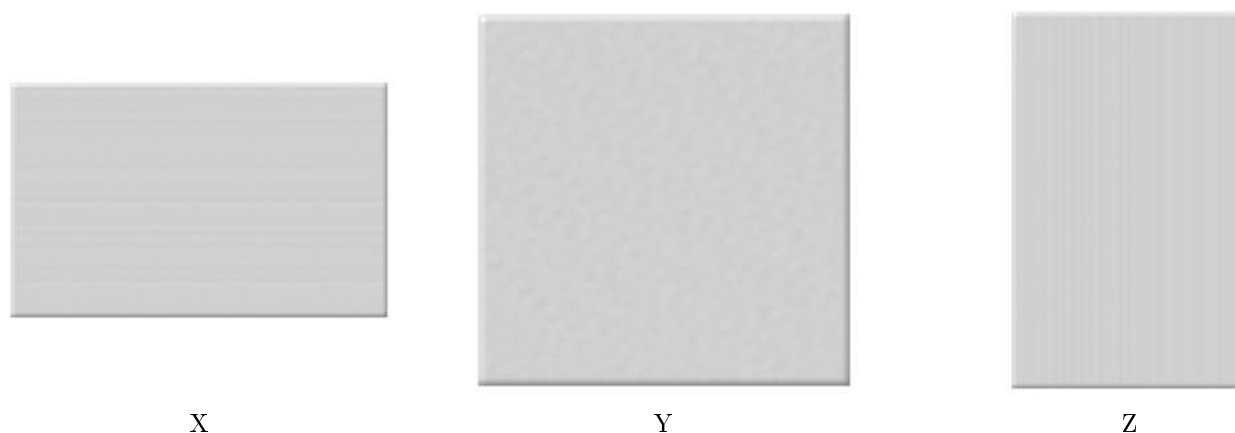
2.3.1 Primary map



The images above show the largest variance slices of the map in three orthogonal directions.

2.4 Orthogonal surface views [i](#)

2.4.1 Primary map



The images above show the 3D surface view of the map at the recommended contour level 113.0. These images, in conjunction with the slice images, may facilitate assessment of whether an appropriate contour level has been provided.

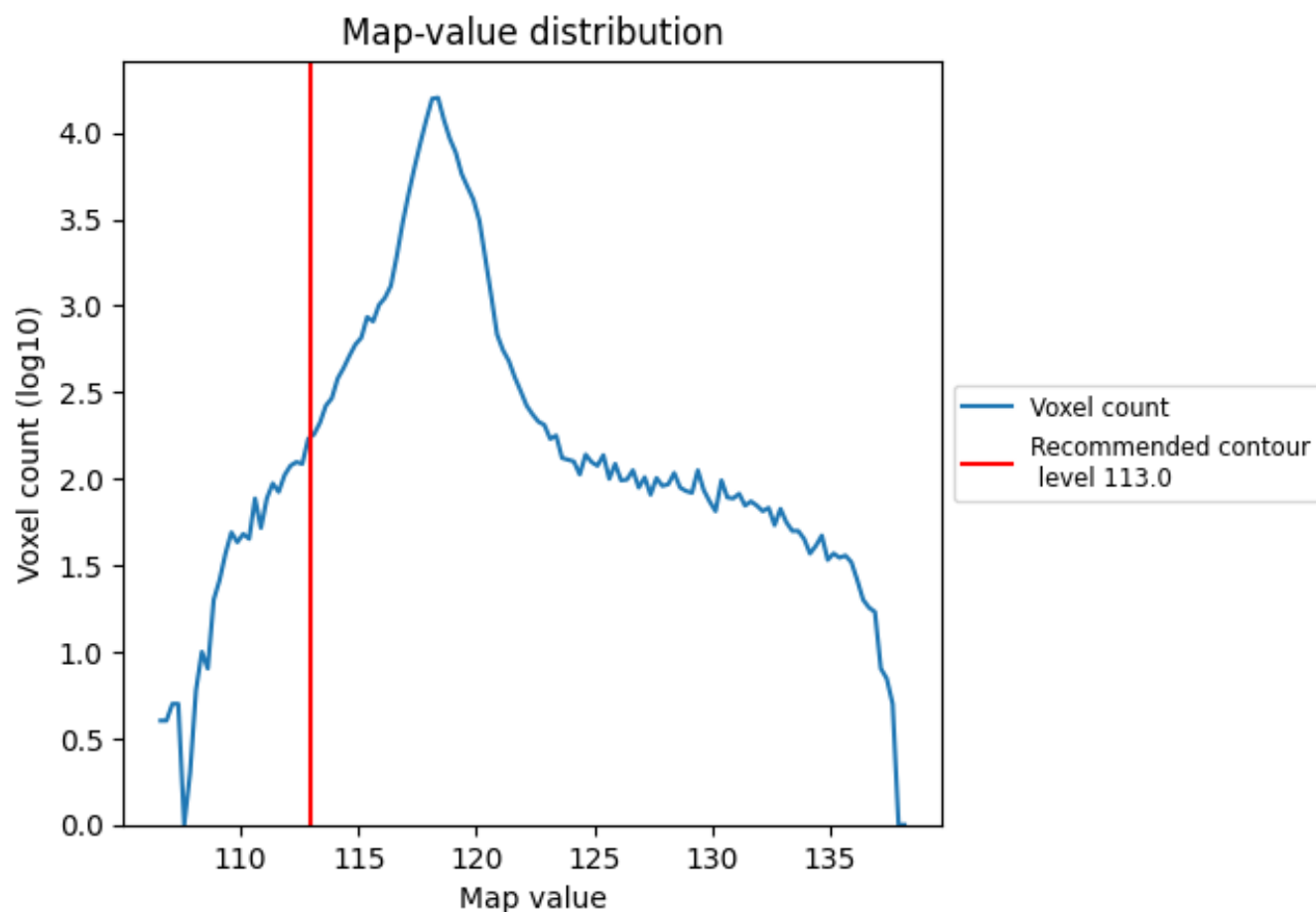
2.5 Mask visualisation

This section was not generated. No masks/segmentation were deposited.

3 Map analysis [i](#)

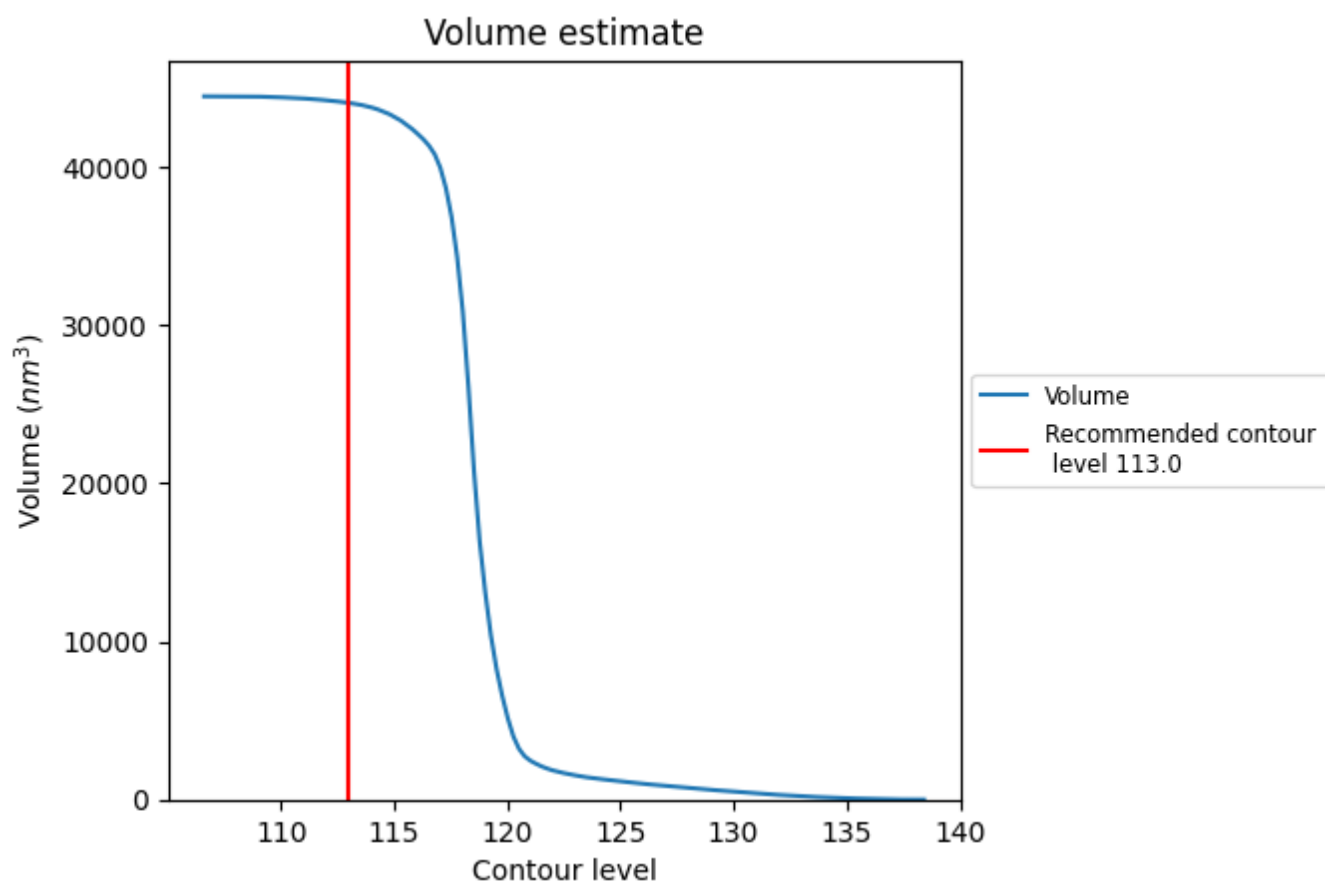
This section contains the results of statistical analysis of the map.

3.1 Map-value distribution [i](#)



The map-value distribution is plotted in 128 intervals along the x-axis. The y-axis is logarithmic. A spike in this graph at zero usually indicates that the volume has been masked.

3.2 Volume estimate [i](#)



The volume at the recommended contour level is 44067 nm³; this corresponds to an approximate mass of 39807 kDa.

The volume estimate graph shows how the enclosed volume varies with the contour level. The recommended contour level is shown as a vertical line and the intersection between the line and the curve gives the volume of the enclosed surface at the given level.

3.3 Rotationally averaged power spectrum [i](#)

This section was not generated. The rotationally averaged power spectrum is only generated for cubic maps.

4 Fourier-Shell correlation ⓘ

This section was not generated. No FSC curve or half-maps provided.