

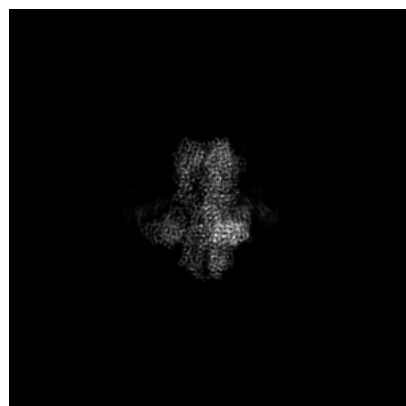
2 Map visualisation [i](#)

This section contains visualisations of the EMDB entry EMD-48613. These allow visual inspection of the internal detail of the map and identification of artifacts.

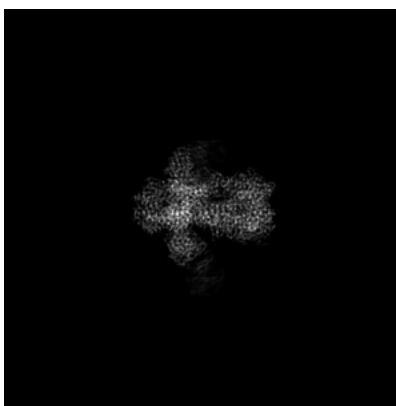
Images derived from a raw map, generated by summing the deposited half-maps, are presented below the corresponding image components of the primary map to allow further visual inspection and comparison with those of the primary map.

2.1 Orthogonal projections [i](#)

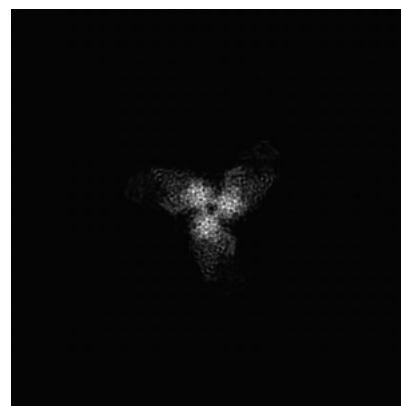
2.1.1 Primary map



X

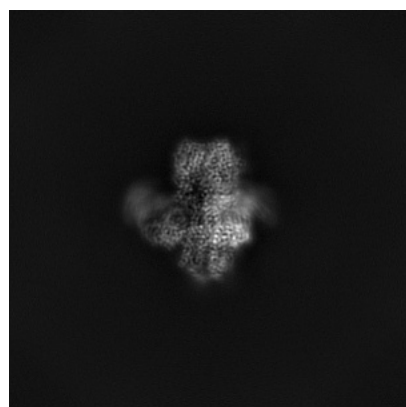


Y

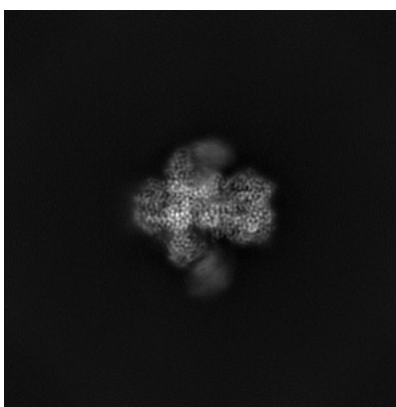


Z

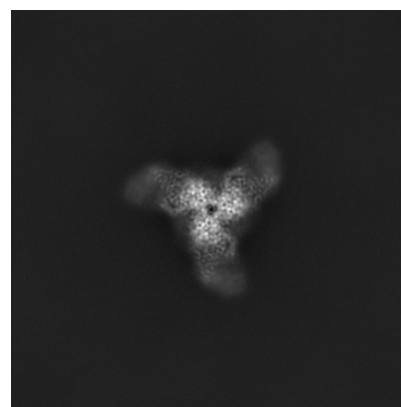
2.1.2 Raw map



X



Y



Z

The images above show the map projected in three orthogonal directions.

2.2 Central slices [i](#)

2.2.1 Primary map



X Index: 180

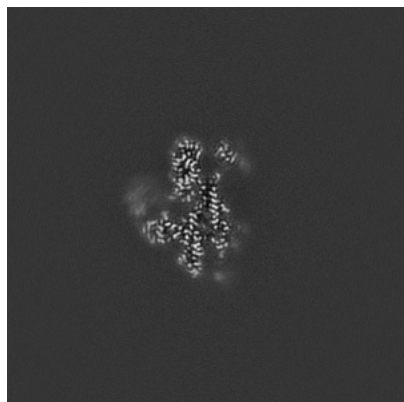


Y Index: 180

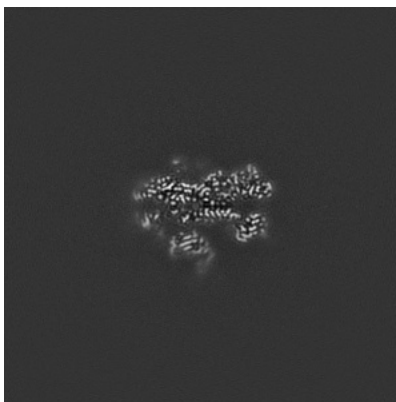


Z Index: 180

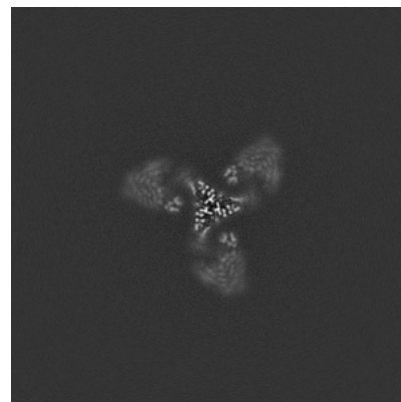
2.2.2 Raw map



X Index: 180



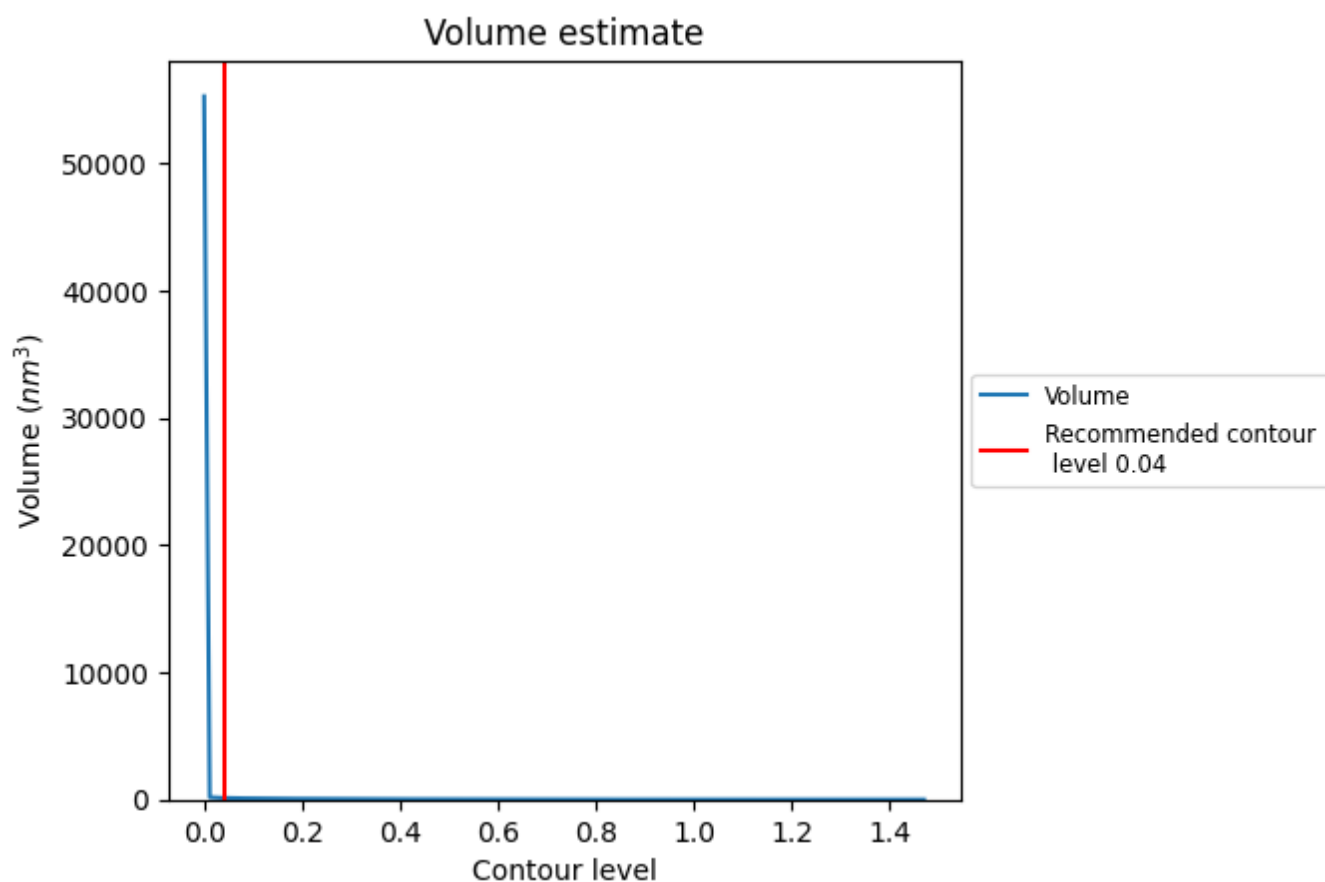
Y Index: 180



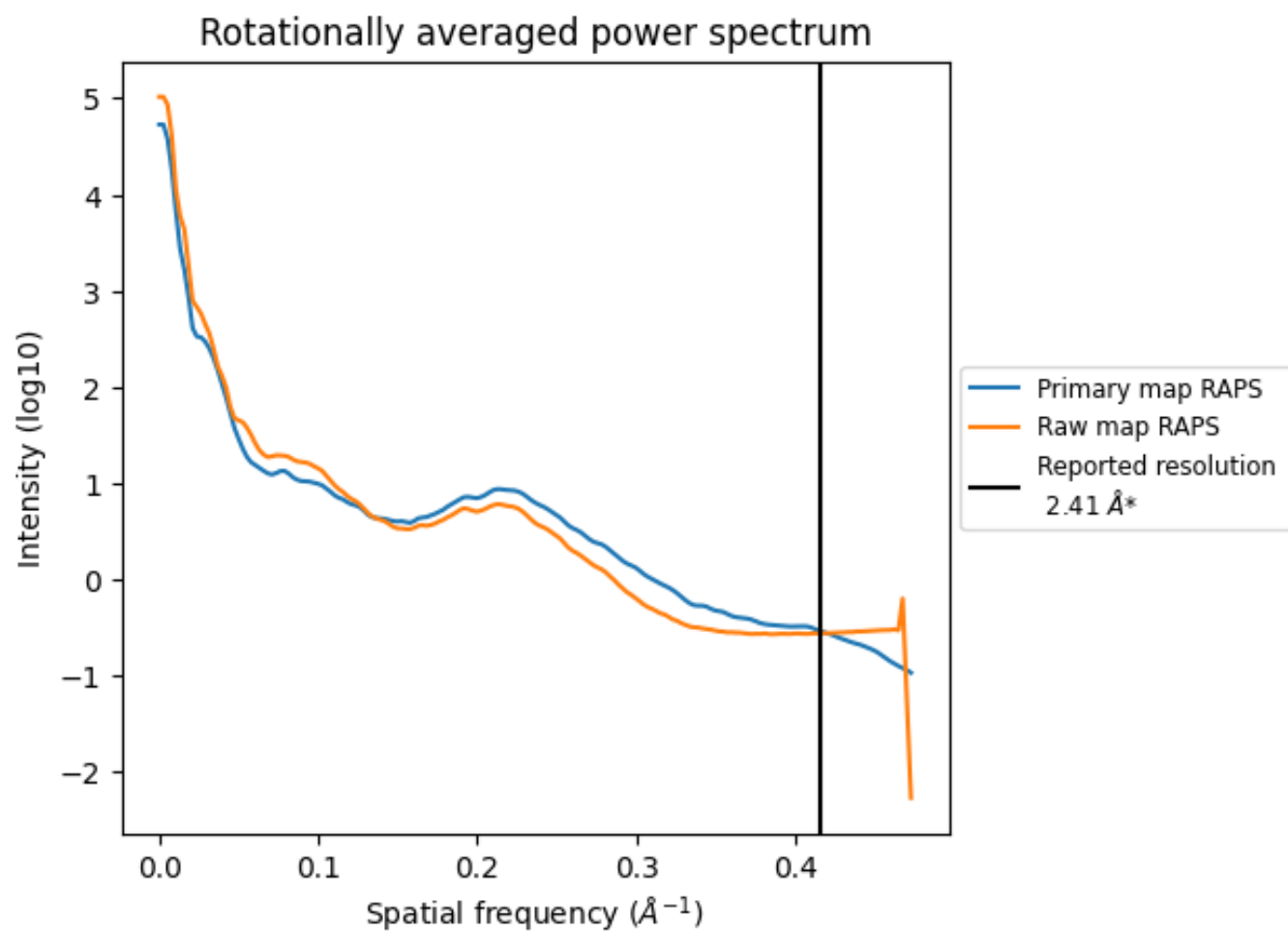
Z Index: 180

The images above show central slices of the map in three orthogonal directions.

3.2 Volume estimate [i](#)



3.3 Rotationally averaged power spectrum ⓘ



4 Fourier-Shell correlation <

4.2 Resolution