



## Full wwPDB EM Validation Report ⓘ

Sep 28, 2024 – 05:54 pm BST

PDB ID : 7A6E  
EMDB ID : EMD-11671  
Title : Nanodisc reconstituted human ABCB1 in complex with MRK16 Fab and tariquidar  
Authors : Nosol, K.; Locher, K.P.  
Deposited on : 2020-08-25  
Resolution : 3.60 Å(reported)

This is a Full wwPDB EM Validation Report for a publicly released PDB entry.

We welcome your comments at [validation@mail.wwpdb.org](mailto:validation@mail.wwpdb.org)

A user guide is available at

<https://www.wwpdb.org/validation/2017/EMValidationReportHelp>  
with specific help available everywhere you see the ⓘ symbol.

The types of validation reports are described at

<http://www.wwpdb.org/validation/2017/FAQs#types>.

---

The following versions of software and data (see [references ⓘ](#)) were used in the production of this report:

EMDB validation analysis : 0.0.1.dev113  
Mogul : 1.8.4, CSD as541be (2020)  
MolProbity : 4.02b-467  
buster-report : 1.1.7 (2018)  
Percentile statistics : 20231227.v01 (using entries in the PDB archive December 27th 2023)  
MapQ : 1.9.13  
Ideal geometry (proteins) : Engh & Huber (2001)  
Ideal geometry (DNA, RNA) : Parkinson et al. (1996)  
Validation Pipeline (wwPDB-VP) : 2.39

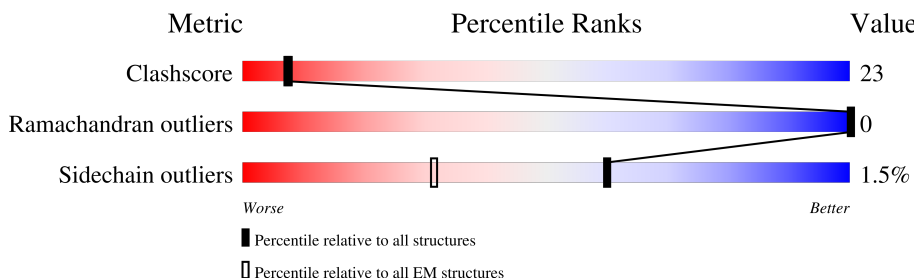
# 1 Overall quality at a glance

The following experimental techniques were used to determine the structure:

*ELECTRON MICROSCOPY*

The reported resolution of this entry is 3.60 Å.

Percentile scores (ranging between 0-100) for global validation metrics of the entry are shown in the following graphic. The table shows the number of entries on which the scores are based.



Metric	Whole archive (#Entries)	EM structures (#Entries)
Clashscore	210492	15764
Ramachandran outliers	207382	16835
Sidechain outliers	206894	16415

The table below summarises the geometric issues observed across the polymeric chains and their fit to the map. The red, orange, yellow and green segments of the bar indicate the fraction of residues that contain outliers for  $\geq 3$ , 2, 1 and 0 types of geometric quality criteria respectively. A grey segment represents the fraction of residues that are not modelled. The numeric value for each fraction is indicated below the corresponding segment, with a dot representing fractions  $\leq 5\%$ . The upper red bar (where present) indicates the fraction of residues that have poor fit to the EM map (all-atom inclusion  $< 40\%$ ). The numeric value is given above the bar.

Mol	Chain	Length	Quality of chain
1	A	1280	<div> <div>48%</div> <div>63%</div> <div>28%</div> <div>9%</div> </div>
2	B	219	<div> <div>51%</div> <div>62%</div> <div>35%</div> <div>..</div> </div>
3	C	218	<div> <div>47%</div> <div>62%</div> <div>37%</div> <div>.</div> </div>

## 2 Entry composition

There are 5 unique types of molecules in this entry. The entry contains 12757 atoms, of which 0 are hydrogens and 0 are deuteriums.

In the tables below, the AltConf column contains the number of residues with at least one atom in alternate conformation and the Trace column contains the number of residues modelled with at most 2 atoms.

- Molecule 1 is a protein called Multidrug resistance protein 1.

Mol	Chain	Residues	Atoms					AltConf	Trace
1	A	1164	Total	C	N	O	S	0	0
			9050	5835	1535	1644	36		

There is a discrepancy between the modelled and reference sequences:

Chain	Residue	Modelled	Actual	Comment	Reference
A	893	ALA	SER	variant	UNP P08183

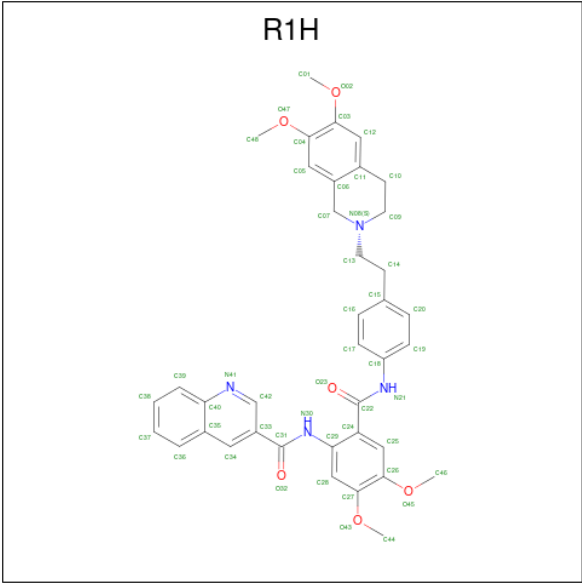
- Molecule 2 is a protein called MRK16 Fab-fragment light chain.

Mol	Chain	Residues	Atoms					AltConf	Trace
2	B	214	Total	C	N	O	S	0	0
			1656	1033	281	335	7		

- Molecule 3 is a protein called MRK16 Fab-fragment heavy chain.

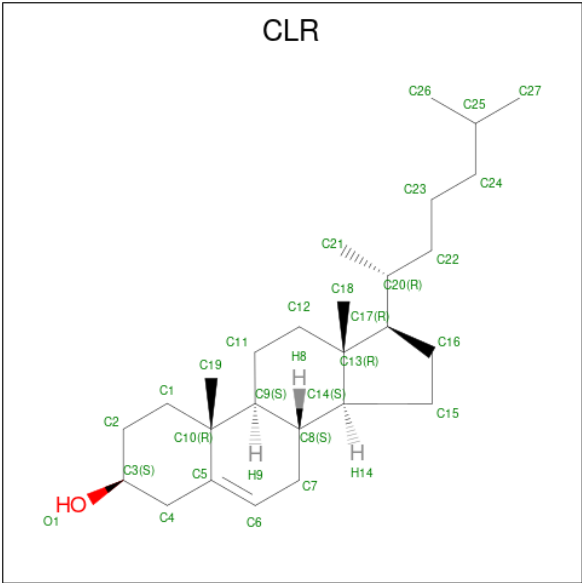
Mol	Chain	Residues	Atoms					AltConf	Trace
3	C	218	Total	C	N	O	S	0	0
			1647	1045	270	325	7		

- Molecule 4 is tariquidar (three-letter code: R1H) (formula:  $C_{38}H_{38}N_4O_6$ ) (labeled as "Ligand of Interest" by depositor).



Mol	Chain	Residues	Atoms				AltConf
4	A	1	Total	C	N	O	0
			48	38	4	6	
4	A	1	Total	C	N	O	0
			48	38	4	6	

- Molecule 5 is CHOLESTEROL (three-letter code: CLR) (formula: C<sub>27</sub>H<sub>46</sub>O).



Mol	Chain	Residues	Atoms				AltConf
5	A	1	Total	C	O		0
			28	27	1		
5	A	1	Total	C	O		0
			28	27	1		

Continued on next page...

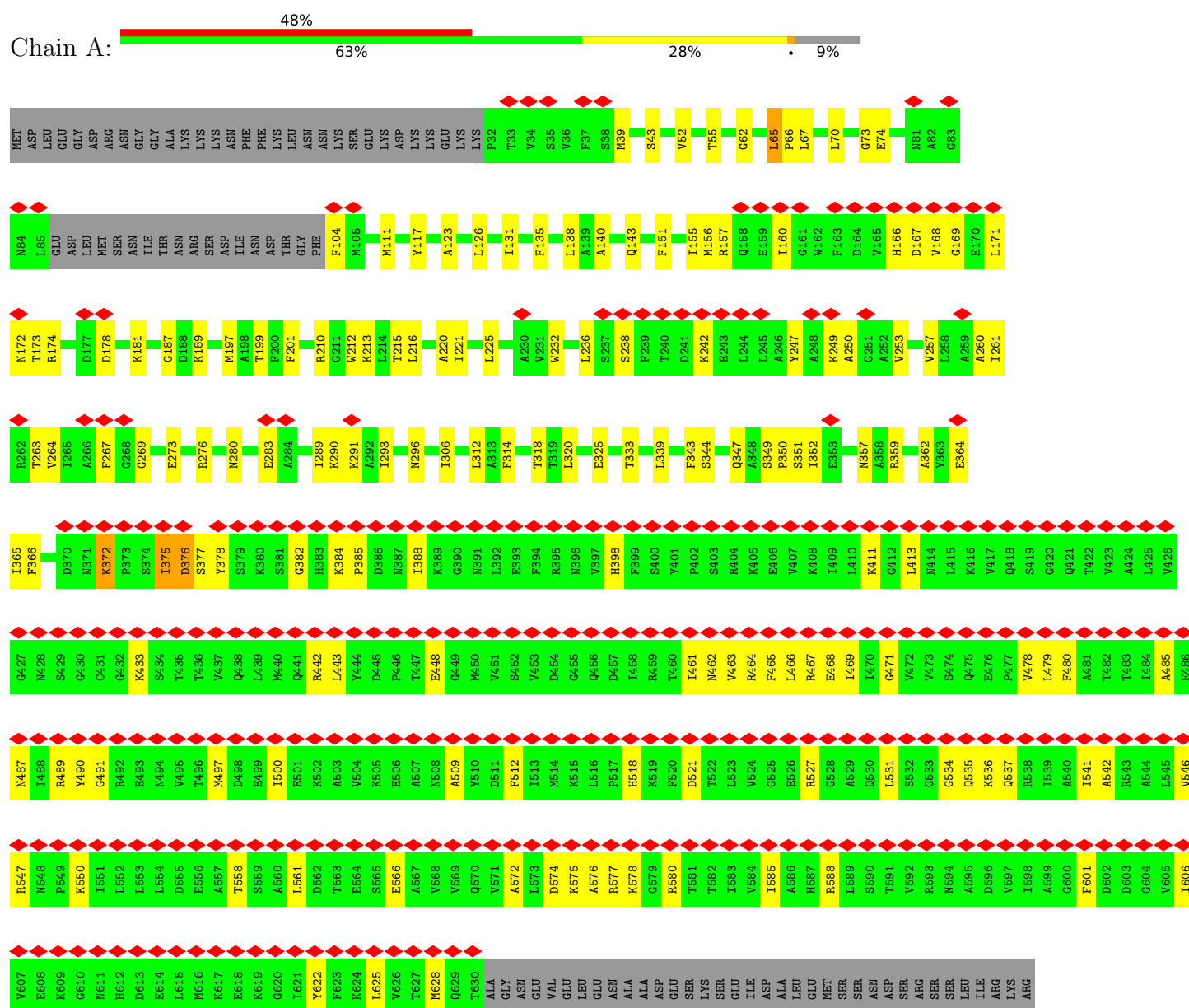
*Continued from previous page...*

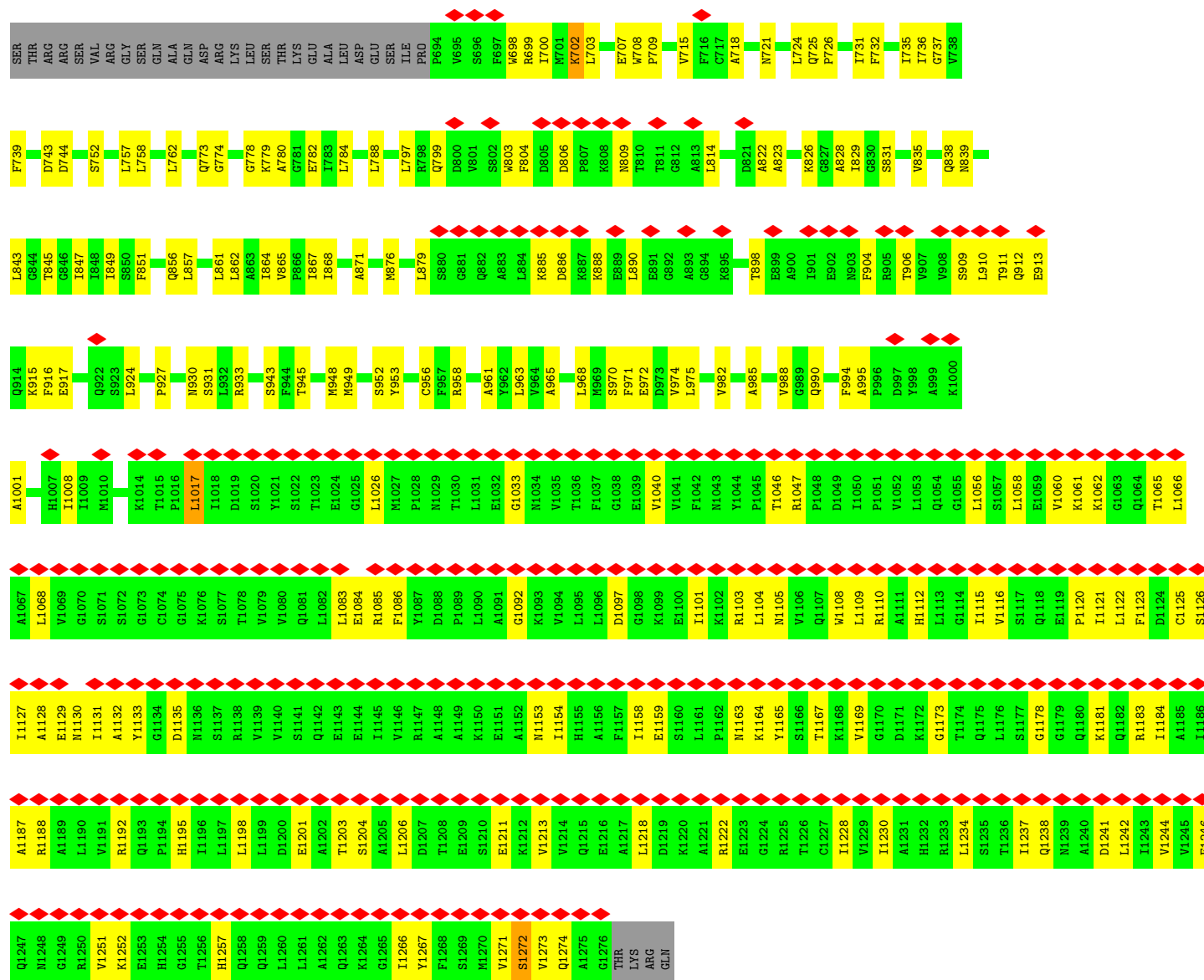
Mol	Chain	Residues	Atoms			AltConf
5	A	1	Total	C	O	0
			28	27	1	
5	A	1	Total	C	O	0
			28	27	1	
5	A	1	Total	C	O	0
			28	27	1	
5	A	1	Total	C	O	0
			28	27	1	
5	A	1	Total	C	O	0
			28	27	1	
5	A	1	Total	C	O	0
			28	27	1	
5	A	1	Total	C	O	0
			28	27	1	
5	A	1	Total	C	O	0
			28	27	1	

### 3 Residue-property plots

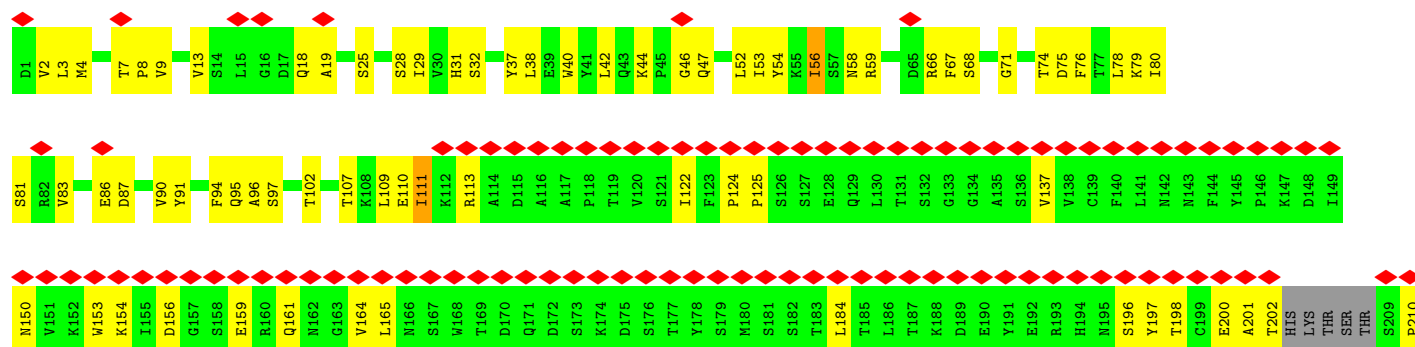
These plots are drawn for all protein, RNA, DNA and oligosaccharide chains in the entry. The first graphic for a chain summarises the proportions of the various outlier classes displayed in the second graphic. The second graphic shows the sequence view annotated by issues in geometry and atom inclusion in map density. Residues are color-coded according to the number of geometric quality criteria for which they contain at least one outlier: green = 0, yellow = 1, orange = 2 and red = 3 or more. A red diamond above a residue indicates a poor fit to the EM map for this residue (all-atom inclusion < 40%). Stretches of 2 or more consecutive residues without any outlier are shown as a green connector. Residues present in the sample, but not in the model, are shown in grey.

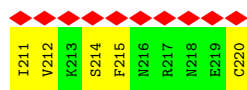
#### • Molecule 1: Multidrug resistance protein 1



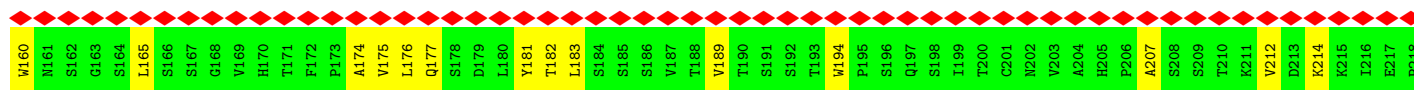
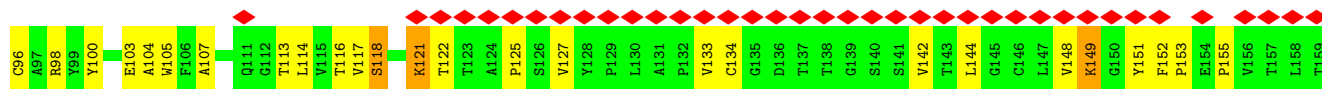
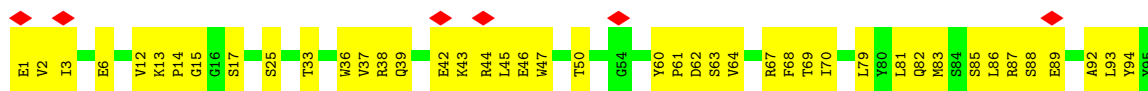


• Molecule 2: MRK16 Fab-fragment light chain





• Molecule 3: MRK16 Fab-fragment heavy chain





## 4 Experimental information

Property	Value	Source
EM reconstruction method	SINGLE PARTICLE	Depositor
Imposed symmetry	POINT, Not provided	
Number of particles used	160295	Depositor
Resolution determination method	FSC 0.143 CUT-OFF	Depositor
CTF correction method	PHASE FLIPPING AND AMPLITUDE CORRECTION	Depositor
Microscope	FEI TITAN KRIOS	Depositor
Voltage (kV)	300	Depositor
Electron dose ( $e^-/\text{\AA}^2$ )	32	Depositor
Minimum defocus (nm)	Not provided	
Maximum defocus (nm)	Not provided	
Magnification	Not provided	
Image detector	GATAN K3 BIOQUANTUM (6k x 4k)	Depositor
Maximum map value	0.065	Depositor
Minimum map value	-0.036	Depositor
Average map value	-0.000	Depositor
Map value standard deviation	0.001	Depositor
Recommended contour level	0.013	Depositor
Map size (Å)	322.56, 322.56, 322.56	wwPDB
Map dimensions	384, 384, 384	wwPDB
Map angles (°)	90.0, 90.0, 90.0	wwPDB
Pixel spacing (Å)	0.84, 0.84, 0.84	Depositor

## 5 Model quality [i](#)

### 5.1 Standard geometry [i](#)

Bond lengths and bond angles in the following residue types are not validated in this section: CLR, R1H

The Z score for a bond length (or angle) is the number of standard deviations the observed value is removed from the expected value. A bond length (or angle) with  $|Z| > 5$  is considered an outlier worth inspection. RMSZ is the root-mean-square of all Z scores of the bond lengths (or angles).

Mol	Chain	Bond lengths		Bond angles	
		RMSZ	$\# Z  > 5$	RMSZ	$\# Z  > 5$
1	A	0.43	0/9218	0.50	0/12455
2	B	0.44	0/1691	0.51	0/2290
3	C	0.46	0/1690	0.54	0/2308
All	All	0.43	0/12599	0.51	0/17053

There are no bond length outliers.

There are no bond angle outliers.

There are no chirality outliers.

There are no planarity outliers.

### 5.2 Too-close contacts [i](#)

In the following table, the Non-H and H(model) columns list the number of non-hydrogen atoms and hydrogen atoms in the chain respectively. The H(added) column lists the number of hydrogen atoms added and optimized by MolProbity. The Clashes column lists the number of clashes within the asymmetric unit, whereas Symm-Clashes lists symmetry-related clashes.

Mol	Chain	Non-H	H(model)	H(added)	Clashes	Symm-Clashes
1	A	9050	0	9264	388	0
2	B	1656	0	1596	101	0
3	C	1647	0	1608	96	0
4	A	96	0	0	9	0
5	A	308	0	506	45	0
All	All	12757	0	12974	590	0

The all-atom clashscore is defined as the number of clashes found per 1000 atoms (including hydrogen atoms). The all-atom clashscore for this structure is 23.

All (590) close contacts within the same asymmetric unit are listed below, sorted by their clash

magnitude.

Atom-1	Atom-2	Interatomic distance (Å)	Clash overlap (Å)
1:A:628:MET:SD	1:A:1272:SER:HB3	1.65	1.37
1:A:479:LEU:HD13	1:A:536:LYS:HG2	1.22	1.18
1:A:700:ILE:O	1:A:829:ILE:HD11	1.44	1.15
2:B:54:TYR:CB	3:C:104:ALA:HB2	1.80	1.10
2:B:161:GLN:HG2	2:B:184:LEU:HD11	1.32	1.10
1:A:1122:LEU:HB3	1:A:1130:ASN:HD21	1.14	1.09
2:B:122:ILE:O	2:B:215:PHE:HE2	1.36	1.08
2:B:54:TYR:HB2	3:C:104:ALA:HB2	1.14	1.06
2:B:40:TRP:CD1	2:B:53:ILE:HD11	1.90	1.04
1:A:151:PHE:CZ	1:A:155:ILE:HD11	1.92	1.03
1:A:253:VAL:HG11	1:A:276:ARG:HE	1.20	1.00
1:A:253:VAL:HG13	1:A:276:ARG:NH1	1.77	0.99
1:A:628:MET:SD	1:A:1272:SER:CB	2.51	0.98
1:A:1122:LEU:HB3	1:A:1130:ASN:ND2	1.79	0.98
1:A:1131:ILE:O	1:A:1188:ARG:HG2	1.64	0.98
2:B:54:TYR:HB2	3:C:104:ALA:CB	1.94	0.97
2:B:198:THR:HG22	2:B:214:SER:HB3	1.47	0.95
3:C:151:TYR:CZ	3:C:181:TYR:HB3	2.00	0.95
2:B:122:ILE:O	2:B:215:PHE:CE2	2.19	0.94
1:A:1128:ALA:CB	1:A:1165:TYR:HD1	1.78	0.94
3:C:151:TYR:OH	3:C:174:ALA:CB	2.16	0.93
1:A:707:GLU:OE2	1:A:780:ALA:HA	1.68	0.93
2:B:38:LEU:HD13	2:B:76:PHE:CD2	2.03	0.92
1:A:1128:ALA:HB2	1:A:1165:TYR:HD1	1.33	0.92
1:A:1131:ILE:HG12	1:A:1184:ILE:HB	1.50	0.92
2:B:122:ILE:HG23	2:B:215:PHE:CD2	2.05	0.91
1:A:220:ALA:HB2	5:A:1308:CLR:H162	1.52	0.91
2:B:54:TYR:CB	3:C:104:ALA:CB	2.49	0.91
2:B:122:ILE:HG23	2:B:215:PHE:CE2	2.06	0.91
1:A:238:SER:OG	1:A:242:LYS:NZ	2.03	0.90
1:A:1122:LEU:CB	1:A:1130:ASN:HD21	1.83	0.90
1:A:480:PHE:HE2	1:A:906:THR:HG1	0.95	0.90
1:A:479:LEU:HD22	1:A:531:LEU:HD21	1.54	0.90
1:A:225:LEU:HD21	1:A:339:LEU:HD12	1.54	0.90
2:B:40:TRP:HD1	2:B:53:ILE:HD11	1.37	0.89
1:A:1128:ALA:HB2	1:A:1165:TYR:CD1	2.07	0.89
1:A:1127:ILE:HG23	1:A:1169:VAL:CG2	2.04	0.87
1:A:378:TYR:OH	1:A:913:GLU:HB2	1.74	0.87
1:A:347:GLN:OE1	1:A:347:GLN:N	2.08	0.86
2:B:96:ALA:CB	3:C:105:TRP:NE1	2.38	0.86
2:B:198:THR:HG22	2:B:214:SER:CB	2.04	0.86

*Continued on next page...*

*Continued from previous page...*

Atom-1	Atom-2	Interatomic distance (Å)	Clash overlap (Å)
1:A:724:LEU:HD22	1:A:762:LEU:HD11	1.56	0.86
3:C:125:PRO:HB3	3:C:151:TYR:HB3	1.58	0.86
1:A:347:GLN:HE21	4:A:1302:R1H:C46	1.88	0.86
1:A:1122:LEU:HD22	1:A:1130:ASN:OD1	1.75	0.85
1:A:1131:ILE:HD13	1:A:1154:ILE:HD12	1.57	0.85
2:B:68:SER:O	2:B:78:LEU:HD12	1.76	0.85
1:A:479:LEU:HD22	1:A:531:LEU:CD2	2.06	0.84
1:A:253:VAL:CG1	1:A:276:ARG:HE	1.89	0.84
1:A:1131:ILE:CD1	1:A:1158:ILE:HD11	2.08	0.84
1:A:290:LYS:O	1:A:293:ILE:HG22	1.78	0.84
1:A:253:VAL:HG11	1:A:276:ARG:NE	1.93	0.83
1:A:104:PHE:HE1	1:A:965:ALA:HA	1.42	0.82
3:C:114:LEU:HD23	3:C:155:PRO:HG3	1.59	0.82
3:C:12:VAL:HG13	3:C:117:VAL:HG22	1.61	0.82
1:A:721:ASN:ND2	1:A:773:GLN:OE1	2.13	0.82
1:A:806:ASP:HB2	1:A:809:ASN:OD1	1.80	0.81
2:B:122:ILE:C	2:B:215:PHE:HE2	1.83	0.81
2:B:156:ASP:N	2:B:196:SER:O	2.13	0.81
1:A:253:VAL:HG13	1:A:276:ARG:CZ	2.10	0.81
1:A:1112:HIS:NE2	1:A:1195:HIS:HB3	1.95	0.81
1:A:347:GLN:O	1:A:350:PRO:HD2	1.80	0.81
1:A:65:LEU:HB3	1:A:66:PRO:HD3	1.63	0.81
3:C:151:TYR:OH	3:C:174:ALA:HB1	1.80	0.81
2:B:156:ASP:HA	2:B:196:SER:HB2	1.63	0.80
2:B:13:VAL:HG21	2:B:19:ALA:HB2	1.62	0.80
1:A:485:ALA:O	1:A:489:ARG:HG3	1.81	0.80
3:C:151:TYR:CE1	3:C:181:TYR:HB2	2.16	0.80
1:A:724:LEU:CD2	1:A:762:LEU:HD11	2.11	0.80
2:B:96:ALA:HB3	3:C:105:TRP:HE1	1.47	0.79
1:A:385:PRO:HD2	1:A:465:PHE:CE2	2.17	0.79
1:A:385:PRO:HD2	1:A:465:PHE:CD2	2.17	0.79
1:A:700:ILE:O	1:A:829:ILE:CD1	2.28	0.79
1:A:828:ALA:HB2	1:A:1001:ALA:HB1	1.65	0.79
2:B:38:LEU:HD13	2:B:76:PHE:CE2	2.18	0.78
3:C:83:MET:HB3	3:C:86:LEU:HD21	1.65	0.78
1:A:1184:ILE:HG13	1:A:1188:ARG:HH12	1.48	0.78
2:B:7:THR:HB	2:B:8:PRO:HD3	1.66	0.77
1:A:253:VAL:HG13	1:A:276:ARG:HH11	1.46	0.77
1:A:906:THR:HA	1:A:909:SER:HB3	1.65	0.77
1:A:885:LYS:HA	1:A:888:LYS:HD2	1.67	0.77
1:A:156:MET:HE2	1:A:913:GLU:OE1	1.85	0.77

*Continued on next page...*

*Continued from previous page...*

Atom-1	Atom-2	Interatomic distance (Å)	Clash overlap (Å)
1:A:375:ILE:HD11	1:A:442:ARG:HE	1.49	0.77
3:C:151:TYR:CZ	3:C:181:TYR:CB	2.67	0.77
2:B:3:LEU:HD12	2:B:3:LEU:O	1.84	0.76
3:C:151:TYR:OH	3:C:174:ALA:HB2	1.85	0.76
1:A:461:ILE:CD1	1:A:466:LEU:HD21	2.14	0.76
1:A:479:LEU:CD1	1:A:536:LYS:HG2	2.09	0.76
3:C:151:TYR:CE1	3:C:181:TYR:CB	2.69	0.76
1:A:253:VAL:CG1	1:A:276:ARG:NE	2.46	0.76
3:C:67:ARG:NH2	3:C:85:SER:O	2.18	0.76
3:C:67:ARG:HH22	3:C:87:ARG:H	1.32	0.76
1:A:1056:LEU:HD11	1:A:1251:VAL:HG23	1.68	0.76
1:A:725:GLN:HE21	1:A:725:GLN:HA	1.51	0.76
1:A:480:PHE:HE2	1:A:906:THR:OG1	1.69	0.75
1:A:1110:ARG:O	1:A:1192:ARG:NH2	2.20	0.75
1:A:349:SER:HA	1:A:352:ILE:HG22	1.69	0.75
1:A:156:MET:CE	1:A:913:GLU:OE1	2.36	0.73
1:A:347:GLN:NE2	4:A:1302:R1H:C46	2.51	0.73
2:B:161:GLN:HG2	2:B:184:LEU:CD1	2.16	0.73
1:A:724:LEU:HD22	1:A:762:LEU:CD1	2.19	0.72
2:B:198:THR:CG2	2:B:214:SER:HB3	2.18	0.72
5:A:1304:CLR:H42	5:A:1306:CLR:H42	1.70	0.72
2:B:8:PRO:O	2:B:107:THR:HG22	1.89	0.72
2:B:54:TYR:HB3	3:C:104:ALA:CB	2.19	0.72
1:A:806:ASP:CB	1:A:809:ASN:OD1	2.38	0.72
1:A:1153:ASN:HD22	1:A:1213:VAL:HG11	1.55	0.72
1:A:839:ASN:HD22	5:A:1310:CLR:H6	1.55	0.71
1:A:1125:CYS:SG	1:A:1126:SER:N	2.63	0.71
1:A:65:LEU:CD2	4:A:1301:R1H:C05	2.68	0.71
3:C:64:VAL:HB	3:C:68:PHE:CD2	2.25	0.71
1:A:461:ILE:HD11	1:A:466:LEU:HD21	1.72	0.71
1:A:318:THR:HG21	1:A:752:SER:HB2	1.72	0.70
1:A:707:GLU:HG2	1:A:707:GLU:O	1.91	0.70
3:C:2:VAL:HG11	3:C:98:ARG:HH11	1.57	0.70
1:A:210:ARG:HG3	1:A:333:THR:HG21	1.74	0.70
1:A:1122:LEU:HD22	1:A:1130:ASN:CG	2.12	0.70
1:A:1130:ASN:O	1:A:1188:ARG:HD3	1.91	0.70
1:A:1127:ILE:CG2	1:A:1169:VAL:HG21	2.22	0.69
1:A:1122:LEU:HD22	1:A:1130:ASN:ND2	2.07	0.69
2:B:8:PRO:O	2:B:107:THR:CG2	2.41	0.69
1:A:253:VAL:CG1	1:A:276:ARG:HH11	2.06	0.69
1:A:104:PHE:CE1	1:A:965:ALA:HA	2.28	0.68

*Continued on next page...*

*Continued from previous page...*

Atom-1	Atom-2	Interatomic distance (Å)	Clash overlap (Å)
1:A:930:ASN:OD1	1:A:933:ARG:NH2	2.25	0.68
2:B:95:GLN:NE2	2:B:102:THR:OG1	2.27	0.68
1:A:700:ILE:HG13	1:A:829:ILE:HD11	1.76	0.68
1:A:1128:ALA:CB	1:A:1165:TYR:CD1	2.68	0.67
1:A:70:LEU:HD23	5:A:1312:CLR:H192	1.75	0.67
2:B:90:VAL:HG21	3:C:43:LYS:CE	2.24	0.67
1:A:384:LYS:HE2	1:A:462:ASN:HD22	1.59	0.67
2:B:90:VAL:HG21	3:C:43:LYS:NZ	2.10	0.67
2:B:95:GLN:NE2	2:B:102:THR:O	2.28	0.67
1:A:1056:LEU:CD1	1:A:1251:VAL:HG23	2.25	0.67
1:A:39:MET:HE1	1:A:359:ARG:HA	1.78	0.66
1:A:225:LEU:HD21	1:A:339:LEU:CD1	2.24	0.66
3:C:100:TYR:HB2	3:C:107:ALA:HB2	1.78	0.66
1:A:1127:ILE:CG2	1:A:1169:VAL:CG2	2.72	0.66
1:A:382:GLY:HA3	1:A:462:ASN:HA	1.78	0.66
1:A:534:GLY:HA2	1:A:537:GLN:HE21	1.60	0.66
2:B:161:GLN:CG	2:B:184:LEU:HD11	2.17	0.66
3:C:69:THR:HG22	3:C:82:GLN:HB3	1.78	0.66
1:A:464:ARG:HH12	1:A:468:GLU:HB2	1.59	0.65
1:A:725:GLN:HA	1:A:725:GLN:NE2	2.10	0.65
3:C:62:ASP:OD1	3:C:63:SER:N	2.28	0.65
2:B:25:SER:O	2:B:74:THR:OG1	2.13	0.65
1:A:725:GLN:NE2	4:A:1301:R1H:O43	2.29	0.65
1:A:724:LEU:CD2	1:A:762:LEU:CD1	2.74	0.65
1:A:1046:THR:HG23	1:A:1047:ARG:HG3	1.77	0.65
1:A:1131:ILE:HD13	1:A:1158:ILE:HD11	1.79	0.65
1:A:725:GLN:HB3	1:A:726:PRO:HD3	1.80	0.64
1:A:835:VAL:HG21	1:A:995:ALA:HB2	1.78	0.64
1:A:839:ASN:HD22	5:A:1310:CLR:C6	2.11	0.64
1:A:174:ARG:HH22	1:A:364:GLU:HB2	1.62	0.64
1:A:558:THR:OG1	1:A:588:ARG:NH1	2.31	0.64
1:A:731:ILE:HD13	1:A:758:LEU:HB3	1.78	0.64
1:A:166:HIS:HD2	1:A:171:LEU:HB2	1.63	0.63
2:B:44:LYS:NZ	2:B:86:GLU:O	2.30	0.63
1:A:1128:ALA:HB1	1:A:1165:TYR:HD1	1.62	0.63
2:B:200:GLU:HG2	2:B:212:VAL:HG12	1.79	0.63
1:A:958:ARG:HE	5:A:1304:CLR:H112	1.63	0.63
3:C:1:GLU:OE1	3:C:1:GLU:N	2.25	0.63
2:B:154:LYS:O	2:B:197:TYR:HA	1.99	0.63
3:C:6:GLU:OE1	3:C:113:THR:HG22	2.00	0.62
1:A:773:GLN:NE2	1:A:838:GLN:OE1	2.28	0.62

*Continued on next page...*

*Continued from previous page...*

Atom-1	Atom-2	Interatomic distance (Å)	Clash overlap (Å)
1:A:1132:ALA:O	1:A:1133:TYR:C	2.38	0.62
2:B:96:ALA:CB	3:C:105:TRP:CE2	2.82	0.62
1:A:700:ILE:CD1	1:A:829:ILE:HG13	2.30	0.62
1:A:253:VAL:CG1	1:A:276:ARG:NH1	2.58	0.61
1:A:861:LEU:HD21	1:A:956:CYS:HB2	1.80	0.61
3:C:117:VAL:HG12	3:C:117:VAL:O	2.00	0.61
3:C:6:GLU:OE1	3:C:94:TYR:O	2.17	0.61
1:A:732:PHE:O	1:A:735:ILE:HG22	1.99	0.61
1:A:220:ALA:HB2	5:A:1308:CLR:C16	2.28	0.61
1:A:1252:LYS:HE2	1:A:1266:ILE:HG13	1.81	0.61
3:C:6:GLU:OE2	3:C:96:CYS:N	2.33	0.61
1:A:62:GLY:O	1:A:199:THR:HA	2.00	0.61
1:A:140:ALA:HB2	1:A:187:GLY:HA2	1.82	0.61
1:A:479:LEU:HD13	1:A:536:LYS:CG	2.15	0.61
2:B:96:ALA:HB3	3:C:105:TRP:NE1	2.06	0.61
1:A:736:ILE:HD12	1:A:975:LEU:HD21	1.81	0.61
1:A:913:GLU:O	1:A:917:GLU:CB	2.49	0.60
1:A:1122:LEU:HD22	1:A:1130:ASN:HD21	1.66	0.60
1:A:151:PHE:CE2	1:A:155:ILE:HD11	2.35	0.60
1:A:171:LEU:HD12	1:A:174:ARG:HD3	1.82	0.60
1:A:1131:ILE:HD13	1:A:1154:ILE:CD1	2.29	0.60
1:A:478:VAL:HG13	1:A:527:ARG:HA	1.83	0.60
1:A:160:ILE:HD12	1:A:443:LEU:HB3	1.84	0.60
1:A:384:LYS:CE	1:A:462:ASN:HD22	2.14	0.60
1:A:117:TYR:CD1	5:A:1312:CLR:H71	2.37	0.60
1:A:725:GLN:HE22	4:A:1301:R1H:C27	2.15	0.59
1:A:867:ILE:HG21	1:A:948:MET:HG2	1.82	0.59
2:B:7:THR:HB	2:B:8:PRO:CD	2.30	0.59
3:C:12:VAL:HG13	3:C:117:VAL:CG2	2.32	0.59
3:C:151:TYR:CD1	3:C:181:TYR:HB2	2.38	0.59
2:B:13:VAL:HG21	2:B:19:ALA:CB	2.30	0.59
2:B:111:ILE:HG22	2:B:111:ILE:O	2.01	0.59
1:A:806:ASP:O	1:A:809:ASN:O	2.20	0.59
1:A:197:MET:CE	1:A:201:PHE:HE2	2.16	0.59
1:A:700:ILE:C	1:A:829:ILE:HD11	2.21	0.58
1:A:1127:ILE:HG22	1:A:1169:VAL:HG21	1.85	0.58
2:B:38:LEU:CD1	2:B:76:PHE:CD2	2.83	0.58
1:A:1127:ILE:HG23	1:A:1169:VAL:HG23	1.84	0.58
1:A:384:LYS:HE2	1:A:465:PHE:HB2	1.86	0.58
1:A:111:MET:HG3	1:A:961:ALA:HB2	1.85	0.58
1:A:861:LEU:O	1:A:864:ILE:HG22	2.03	0.58

*Continued on next page...*



*Continued from previous page...*

Atom-1	Atom-2	Interatomic distance (Å)	Clash overlap (Å)
1:A:464:ARG:NH1	1:A:468:GLU:HB2	2.19	0.58
1:A:843:LEU:HD22	1:A:988:VAL:HG21	1.84	0.58
2:B:122:ILE:C	2:B:215:PHE:CE2	2.73	0.58
1:A:839:ASN:HB3	5:A:1310:CLR:H72	1.86	0.57
1:A:1083:LEU:HD23	1:A:1198:LEU:HD11	1.85	0.57
1:A:1122:LEU:CG	1:A:1130:ASN:HD21	2.16	0.57
3:C:86:LEU:HB3	3:C:117:VAL:HG21	1.86	0.57
1:A:74:GLU:OE2	5:A:1312:CLR:O1	2.21	0.57
1:A:1135:ASP:OD1	1:A:1135:ASP:N	2.37	0.57
2:B:18:GLN:HG3	2:B:80:ILE:O	2.04	0.57
1:A:375:ILE:HD11	1:A:442:ARG:NE	2.19	0.56
1:A:166:HIS:CD2	1:A:171:LEU:HB2	2.39	0.56
1:A:349:SER:HA	1:A:352:ILE:CG2	2.35	0.56
1:A:737:GLY:HA3	1:A:972:GLU:OE2	2.05	0.56
1:A:1058:LEU:HD11	1:A:1066:LEU:HD11	1.87	0.56
1:A:1115:ILE:HD11	1:A:1198:LEU:HD12	1.87	0.56
2:B:42:LEU:HB2	2:B:52:LEU:HD11	1.86	0.56
2:B:202:THR:HG22	2:B:210:PRO:HB3	1.87	0.56
1:A:847:ILE:CG2	1:A:851:PHE:CE2	2.89	0.56
1:A:382:GLY:HA3	1:A:462:ASN:CA	2.36	0.56
2:B:150:ASN:HB2	2:B:202:THR:OG1	2.05	0.56
5:A:1304:CLR:H181	5:A:1306:CLR:H152	1.86	0.56
1:A:628:MET:HG3	1:A:1272:SER:C	2.25	0.56
2:B:71:GLY:HA3	2:B:76:PHE:HD1	1.70	0.56
3:C:47:TRP:CZ2	3:C:50:THR:HG23	2.40	0.56
1:A:339:LEU:HD11	1:A:343:PHE:HE2	1.70	0.56
2:B:96:ALA:HB1	3:C:105:TRP:CZ2	2.40	0.56
1:A:253:VAL:HG13	1:A:276:ARG:NE	2.19	0.55
2:B:29:ILE:HG23	2:B:97:SER:HB2	1.88	0.55
1:A:318:THR:HG22	1:A:739:PHE:HZ	1.70	0.55
1:A:1105:ASN:HD22	1:A:1108:TRP:H	1.54	0.55
1:A:111:MET:HG3	1:A:961:ALA:CB	2.36	0.55
1:A:257:VAL:HG21	1:A:273:GLU:CG	2.37	0.55
1:A:1181:LYS:HA	1:A:1184:ILE:HG12	1.87	0.55
1:A:263:THR:HG23	1:A:267:PHE:HE2	1.72	0.55
3:C:118:SER:HG	3:C:152:PHE:HZ	1.55	0.55
2:B:31:HIS:CD2	2:B:32:SER:H	2.25	0.55
2:B:67:PHE:CD1	2:B:80:ILE:HG12	2.41	0.55
1:A:269:GLY:HA3	1:A:1133:TYR:OH	2.07	0.55
1:A:828:ALA:HB2	1:A:1001:ALA:CB	2.36	0.54
1:A:1122:LEU:HD11	1:A:1184:ILE:HD11	1.90	0.54

*Continued on next page...*



*Continued from previous page...*

Atom-1	Atom-2	Interatomic distance (Å)	Clash overlap (Å)
1:A:518:HIS:HB3	1:A:521:ASP:HB3	1.88	0.54
1:A:715:VAL:O	1:A:718:ALA:HB3	2.07	0.54
1:A:1131:ILE:O	1:A:1188:ARG:CG	2.48	0.54
1:A:890:LEU:HD12	1:A:927:PRO:HB2	1.90	0.54
3:C:67:ARG:NH2	3:C:87:ARG:H	2.03	0.54
1:A:561:LEU:O	1:A:588:ARG:NH2	2.40	0.54
2:B:198:THR:HG22	2:B:214:SER:HB2	1.88	0.54
1:A:314:PHE:O	1:A:318:THR:HG23	2.08	0.53
3:C:2:VAL:HG11	3:C:98:ARG:NH1	2.22	0.53
2:B:2:VAL:HG11	2:B:29:ILE:HD11	1.90	0.53
2:B:66:ARG:HD2	2:B:81:SER:O	2.07	0.53
1:A:1060:VAL:HG22	1:A:1066:LEU:HD13	1.90	0.53
1:A:236:LEU:HD13	1:A:994:PHE:HZ	1.73	0.53
2:B:13:VAL:HG11	2:B:83:VAL:HG21	1.90	0.53
2:B:96:ALA:HB2	3:C:105:TRP:NE1	2.20	0.53
1:A:236:LEU:HD22	1:A:994:PHE:CE2	2.44	0.53
1:A:913:GLU:O	1:A:917:GLU:HB3	2.08	0.53
1:A:1122:LEU:CD2	1:A:1130:ASN:HD21	2.21	0.53
1:A:953:TYR:HD2	4:A:1301:R1H:C01	2.22	0.53
2:B:220:CYS:SG	3:C:134:CYS:N	2.82	0.53
1:A:257:VAL:HG11	1:A:273:GLU:HG3	1.91	0.52
1:A:831:SER:O	1:A:835:VAL:HG23	2.10	0.52
1:A:73:GLY:HA3	1:A:333:THR:OG1	2.10	0.52
1:A:384:LYS:HE2	1:A:462:ASN:ND2	2.24	0.52
3:C:142:VAL:HG11	3:C:194:TRP:CE3	2.45	0.52
1:A:197:MET:HE1	1:A:201:PHE:HE2	1.74	0.52
1:A:480:PHE:HB2	1:A:487:ASN:OD1	2.10	0.52
3:C:176:LEU:HB2	3:C:181:TYR:CE1	2.45	0.52
1:A:151:PHE:CZ	1:A:155:ILE:CD1	2.82	0.52
1:A:1085:ARG:NH2	1:A:1101:ILE:HG22	2.25	0.52
3:C:47:TRP:HZ2	3:C:50:THR:HG23	1.74	0.52
1:A:958:ARG:HH21	5:A:1304:CLR:C1	2.22	0.52
1:A:1234:LEU:HD13	1:A:1237:ILE:HD12	1.92	0.52
2:B:28:SER:O	2:B:28:SER:OG	2.25	0.52
1:A:52:VAL:O	1:A:55:THR:HG22	2.10	0.51
1:A:1154:ILE:HG22	1:A:1183:ARG:HB3	1.92	0.51
3:C:125:PRO:HB3	3:C:151:TYR:CB	2.36	0.51
3:C:13:LYS:HG3	3:C:14:PRO:HD2	1.92	0.51
3:C:88:SER:HA	3:C:117:VAL:HG12	1.92	0.51
1:A:845:THR:O	1:A:849:ILE:HG12	2.10	0.51
3:C:43:LYS:O	3:C:43:LYS:HG2	2.11	0.51

*Continued on next page...*

*Continued from previous page...*

Atom-1	Atom-2	Interatomic distance (Å)	Clash overlap (Å)
2:B:124:PRO:HD3	2:B:215:PHE:CZ	2.46	0.51
2:B:4:MET:CE	2:B:95:GLN:OE1	2.59	0.51
1:A:174:ARG:HH22	1:A:364:GLU:CB	2.23	0.51
1:A:700:ILE:HD11	1:A:829:ILE:HG13	1.93	0.51
1:A:1068:LEU:HD23	1:A:1244:VAL:HB	1.93	0.51
1:A:601:PHE:CE1	1:A:606:ILE:HG12	2.46	0.51
1:A:708:TRP:CD2	1:A:709:PRO:HD3	2.46	0.50
5:A:1310:CLR:H162	5:A:1310:CLR:H231	1.92	0.50
1:A:1131:ILE:CD1	1:A:1154:ILE:HD12	2.37	0.50
3:C:67:ARG:HH22	3:C:87:ARG:N	2.02	0.50
1:A:491:GLY:HA3	1:A:546:VAL:HG23	1.94	0.50
2:B:90:VAL:CG2	3:C:43:LYS:NZ	2.74	0.50
1:A:320:LEU:HD22	1:A:325:GLU:OE1	2.11	0.50
1:A:537:GLN:O	1:A:541:ILE:HG12	2.12	0.50
2:B:54:TYR:HB3	3:C:104:ALA:HB1	1.90	0.50
1:A:123:ALA:O	1:A:126:LEU:HB3	2.11	0.50
1:A:707:GLU:OE2	1:A:780:ALA:CA	2.52	0.50
3:C:142:VAL:N	3:C:189:VAL:O	2.43	0.50
1:A:140:ALA:CB	1:A:187:GLY:HA2	2.41	0.50
1:A:318:THR:HG22	1:A:739:PHE:CZ	2.47	0.50
1:A:531:LEU:HG	1:A:536:LYS:HG3	1.94	0.50
1:A:725:GLN:HE21	1:A:725:GLN:CA	2.17	0.50
1:A:1238:GLN:OE1	1:A:1257:HIS:NE2	2.43	0.50
1:A:65:LEU:HB3	1:A:66:PRO:CD	2.39	0.49
1:A:1218:LEU:O	1:A:1222:ARG:N	2.44	0.49
2:B:67:PHE:HD1	2:B:80:ILE:HG12	1.77	0.49
1:A:479:LEU:HD11	1:A:536:LYS:HA	1.94	0.49
1:A:1234:LEU:HB3	1:A:1238:GLN:HE21	1.77	0.49
3:C:93:LEU:HD12	3:C:113:THR:O	2.12	0.49
1:A:172:ASN:ND2	1:A:898:THR:OG1	2.41	0.49
1:A:469:ILE:HG22	1:A:550:LYS:HB2	1.94	0.49
1:A:847:ILE:HG22	1:A:851:PHE:CD2	2.48	0.49
1:A:1154:ILE:CG2	1:A:1183:ARG:HB3	2.42	0.49
1:A:1203:THR:HG23	1:A:1206:LEU:HB3	1.94	0.49
3:C:153:PRO:HG2	3:C:155:PRO:HD2	1.94	0.49
1:A:65:LEU:HD21	4:A:1301:R1H:C05	2.41	0.49
1:A:913:GLU:O	1:A:917:GLU:HB2	2.11	0.49
1:A:1159:GLU:HA	1:A:1164:LYS:HE3	1.94	0.49
2:B:95:GLN:HG2	2:B:95:GLN:O	2.12	0.49
3:C:42:GLU:OE1	3:C:44:ARG:NE	2.44	0.49
1:A:1241:ASP:OD1	1:A:1242:LEU:HG	2.13	0.49

*Continued on next page...*

*Continued from previous page...*

Atom-1	Atom-2	Interatomic distance (Å)	Clash overlap (Å)
2:B:125:PRO:HD3	2:B:137:VAL:HG22	1.95	0.49
3:C:127:VAL:HG22	3:C:148:VAL:HG12	1.94	0.49
1:A:250:ALA:HB2	1:A:280:ASN:HB3	1.95	0.49
3:C:212:VAL:HG21	3:C:214:LYS:HE2	1.95	0.49
1:A:362:ALA:HB1	1:A:366:PHE:CE2	2.48	0.49
1:A:1131:ILE:CD1	1:A:1158:ILE:CD1	2.87	0.49
2:B:38:LEU:CD1	2:B:76:PHE:CE2	2.92	0.49
2:B:54:TYR:CB	3:C:104:ALA:HB1	2.40	0.49
2:B:59:ARG:NE	2:B:67:PHE:O	2.45	0.49
1:A:339:LEU:HD11	1:A:343:PHE:CE2	2.48	0.49
2:B:154:LYS:HA	2:B:159:GLU:O	2.13	0.49
1:A:257:VAL:HG21	1:A:273:GLU:HG3	1.95	0.48
1:A:497:MET:SD	1:A:500:ILE:HD12	2.53	0.48
1:A:803:TRP:CH2	1:A:814:LEU:HD21	2.48	0.48
2:B:96:ALA:HB1	3:C:105:TRP:CE2	2.46	0.48
1:A:318:THR:HG21	1:A:752:SER:CB	2.41	0.48
3:C:12:VAL:HG11	3:C:86:LEU:HD12	1.96	0.48
1:A:806:ASP:O	1:A:809:ASN:OD1	2.31	0.48
1:A:910:LEU:HD23	1:A:912:GLN:NE2	2.28	0.48
5:A:1308:CLR:H162	5:A:1308:CLR:H222	1.57	0.48
1:A:67:LEU:HD21	5:A:1313:CLR:C18	2.43	0.48
1:A:912:GLN:HB3	1:A:916:PHE:CD2	2.49	0.48
3:C:39:GLN:HB2	3:C:45:LEU:HD23	1.94	0.48
1:A:413:LEU:O	1:A:413:LEU:HD12	2.13	0.48
1:A:478:VAL:CG1	1:A:527:ARG:HA	2.44	0.48
3:C:15:GLY:HA2	3:C:85:SER:HA	1.95	0.48
3:C:151:TYR:CD1	3:C:151:TYR:C	2.86	0.48
1:A:169:GLY:O	1:A:173:THR:HG23	2.14	0.48
1:A:225:LEU:HD11	1:A:343:PHE:CZ	2.48	0.48
1:A:479:LEU:HD22	1:A:531:LEU:HD22	1.93	0.48
1:A:703:LEU:HD11	1:A:784:LEU:HD11	1.95	0.48
1:A:924:LEU:O	1:A:927:PRO:HD2	2.13	0.48
1:A:757:LEU:HD11	5:A:1307:CLR:H21	1.96	0.48
1:A:886:ASP:OD2	1:A:931:SER:HA	2.14	0.48
1:A:242:LYS:HG3	1:A:291:LYS:HE2	1.96	0.48
1:A:628:MET:SD	1:A:1272:SER:CA	3.02	0.48
2:B:4:MET:SD	2:B:95:GLN:OE1	2.72	0.48
1:A:433:LYS:HB3	1:A:585:ILE:HD13	1.94	0.47
1:A:531:LEU:H	1:A:531:LEU:HD23	1.78	0.47
5:A:1312:CLR:H212	5:A:1312:CLR:H121	1.96	0.47
1:A:138:LEU:HD23	1:A:138:LEU:HA	1.66	0.47

*Continued on next page...*

*Continued from previous page...*

Atom-1	Atom-2	Interatomic distance (Å)	Clash overlap (Å)
1:A:156:MET:HE3	1:A:913:GLU:OE1	2.12	0.47
1:A:1203:THR:OG1	1:A:1211:GLU:OE2	2.22	0.47
3:C:3:ILE:HD11	3:C:25:SER:HB3	1.96	0.47
2:B:28:SER:HA	2:B:74:THR:HB	1.95	0.47
2:B:29:ILE:CD1	2:B:95:GLN:HG3	2.43	0.47
1:A:871:ALA:HB2	1:A:945:THR:HB	1.96	0.47
1:A:958:ARG:HH21	5:A:1304:CLR:H12	1.78	0.47
1:A:167:ASP:OD1	1:A:168:VAL:N	2.47	0.47
1:A:707:GLU:O	1:A:707:GLU:CG	2.61	0.47
1:A:843:LEU:HD23	5:A:1310:CLR:H151	1.96	0.47
1:A:949:MET:HG2	4:A:1301:R1H:C12	2.45	0.47
2:B:153:TRP:CD1	2:B:164:VAL:HG11	2.49	0.47
3:C:60:TYR:OH	3:C:70:ILE:HG22	2.14	0.47
3:C:100:TYR:HD2	3:C:104:ALA:HB3	1.80	0.47
1:A:1068:LEU:HB2	1:A:1230:ILE:HG12	1.97	0.47
1:A:253:VAL:CG1	1:A:276:ARG:CZ	2.81	0.46
1:A:375:ILE:HG22	1:A:375:ILE:O	2.14	0.46
1:A:1026:LEU:N	1:A:1103:ARG:O	2.47	0.46
2:B:18:GLN:OE1	2:B:81:SER:HB3	2.16	0.46
1:A:862:LEU:HA	1:A:865:VAL:HG23	1.97	0.46
1:A:1273:VAL:HG12	1:A:1274:GLN:HG2	1.96	0.46
5:A:1306:CLR:H183	5:A:1306:CLR:H20	1.79	0.46
1:A:126:LEU:HD12	1:A:943:SER:HB2	1.97	0.46
1:A:708:TRP:CG	1:A:709:PRO:HD3	2.50	0.46
1:A:1131:ILE:HG23	1:A:1187:ALA:HB3	1.98	0.46
5:A:1305:CLR:H211	5:A:1305:CLR:H232	1.64	0.46
1:A:1267:TYR:CZ	1:A:1271:VAL:CG2	2.98	0.46
1:A:384:LYS:CE	1:A:462:ASN:ND2	2.78	0.46
1:A:43:SER:HB3	1:A:143:GLN:NE2	2.31	0.46
1:A:261:ILE:HG21	1:A:804:PHE:CE2	2.50	0.46
1:A:861:LEU:HD11	1:A:956:CYS:SG	2.55	0.46
1:A:864:ILE:CD1	1:A:952:SER:HB2	2.45	0.46
1:A:1120:PRO:HB2	1:A:1181:LYS:HD2	1.97	0.46
1:A:1267:TYR:O	1:A:1271:VAL:HG23	2.16	0.46
3:C:92:ALA:O	3:C:114:LEU:HD12	2.16	0.46
1:A:1033:GLY:H	1:A:1097:ASP:CG	2.19	0.45
1:A:1120:PRO:HG2	1:A:1181:LYS:HZ3	1.81	0.45
5:A:1305:CLR:H111	5:A:1305:CLR:H193	1.69	0.45
1:A:174:ARG:NH2	1:A:364:GLU:O	2.50	0.45
1:A:372:LYS:HB2	1:A:372:LYS:HE2	1.42	0.45
1:A:1131:ILE:HG12	1:A:1184:ILE:CB	2.35	0.45

*Continued on next page...*

*Continued from previous page...*

Atom-1	Atom-2	Interatomic distance (Å)	Clash overlap (Å)
2:B:9:VAL:HA	2:B:107:THR:HG22	1.98	0.45
2:B:29:ILE:HD13	2:B:95:GLN:HG3	1.99	0.45
1:A:578:LYS:HE2	1:A:578:LYS:HB3	1.85	0.45
1:A:700:ILE:HG13	1:A:829:ILE:CD1	2.46	0.45
1:A:216:LEU:HD23	1:A:216:LEU:HA	1.78	0.45
1:A:232:TRP:NE1	1:A:236:LEU:HD11	2.31	0.45
1:A:264:VAL:HG12	1:A:1123:PHE:CZ	2.52	0.45
1:A:572:ALA:HA	1:A:575:LYS:HE2	1.99	0.45
1:A:847:ILE:CG2	1:A:851:PHE:HE2	2.29	0.45
1:A:375:ILE:CD1	1:A:442:ARG:HG2	2.46	0.45
1:A:876:MET:HG2	1:A:990:GLN:HG2	1.99	0.45
5:A:1309:CLR:H121	5:A:1309:CLR:H212	1.99	0.45
2:B:7:THR:CB	2:B:8:PRO:CD	2.93	0.45
2:B:75:ASP:OD1	2:B:76:PHE:N	2.49	0.45
1:A:1040:VAL:HA	1:A:1092:GLY:HA3	1.99	0.45
1:A:306:ILE:HG12	1:A:343:PHE:HZ	1.82	0.45
1:A:778:GLY:O	1:A:782:GLU:HG2	2.16	0.45
1:A:857:LEU:HD22	1:A:974:VAL:HG23	1.98	0.44
5:A:1306:CLR:H213	5:A:1306:CLR:H232	1.77	0.44
3:C:151:TYR:CD1	3:C:151:TYR:O	2.70	0.44
3:C:160:TRP:HB2	3:C:165:LEU:HB2	2.00	0.44
1:A:263:THR:OG1	1:A:1121:ILE:HD12	2.18	0.44
1:A:822:ALA:N	1:A:1008:ILE:HD11	2.32	0.44
1:A:890:LEU:HD12	1:A:927:PRO:CB	2.46	0.44
1:A:963:LEU:HD23	1:A:963:LEU:HA	1.77	0.44
1:A:1085:ARG:HD3	1:A:1101:ILE:CG2	2.48	0.44
5:A:1303:CLR:H151	5:A:1304:CLR:H272	1.98	0.44
5:A:1311:CLR:H222	5:A:1311:CLR:H162	1.84	0.44
1:A:151:PHE:CE2	1:A:155:ILE:CD1	3.00	0.44
1:A:788:LEU:HD23	1:A:788:LEU:HA	1.79	0.44
1:A:181:LYS:HD3	1:A:357:ASN:HB3	1.99	0.44
1:A:289:ILE:HD13	1:A:779:LYS:HE2	1.99	0.44
1:A:698:TRP:O	1:A:698:TRP:CE3	2.70	0.44
1:A:232:TRP:CE2	1:A:236:LEU:HD11	2.53	0.44
1:A:1201:GLU:HB3	1:A:1204:SER:OG	2.18	0.44
3:C:47:TRP:O	3:C:61:PRO:HG3	2.18	0.44
1:A:157:ARG:HH12	1:A:376:ASP:HB3	1.82	0.44
1:A:509:ALA:HB1	1:A:512:PHE:HE1	1.82	0.44
1:A:867:ILE:CG2	1:A:948:MET:HG2	2.48	0.44
2:B:161:GLN:CG	2:B:184:LEU:CD1	2.88	0.44
1:A:910:LEU:HD12	1:A:911:THR:H	1.83	0.43

*Continued on next page...*

*Continued from previous page...*

Atom-1	Atom-2	Interatomic distance (Å)	Clash overlap (Å)
1:A:1181:LYS:HA	1:A:1184:ILE:CD1	2.48	0.43
3:C:151:TYR:HH	3:C:174:ALA:CB	2.25	0.43
5:A:1313:CLR:H232	5:A:1313:CLR:H211	1.46	0.43
1:A:260:ALA:HB1	1:A:1121:ILE:HD13	2.01	0.43
1:A:628:MET:HG3	1:A:1272:SER:CA	2.49	0.43
1:A:823:ALA:O	1:A:826:LYS:HG2	2.18	0.43
1:A:1085:ARG:HH21	1:A:1101:ILE:HG22	1.82	0.43
1:A:1178:GLY:HA2	1:A:1181:LYS:HG2	2.00	0.43
3:C:153:PRO:HD2	3:C:207:ALA:HB3	2.00	0.43
1:A:904:PHE:O	1:A:904:PHE:CG	2.71	0.43
3:C:37:VAL:HG13	3:C:46:GLU:O	2.18	0.43
3:C:121:LYS:CD	3:C:121:LYS:H	2.32	0.43
1:A:463:VAL:HG12	1:A:467:ARG:HD2	1.99	0.43
1:A:871:ALA:CB	1:A:945:THR:HB	2.49	0.43
5:A:1306:CLR:H221	5:A:1306:CLR:H162	1.30	0.43
1:A:172:ASN:ND2	1:A:898:THR:HA	2.33	0.43
1:A:398:HIS:HB2	1:A:448:GLU:HB2	1.99	0.43
1:A:489:ARG:NH1	1:A:497:MET:CE	2.82	0.43
1:A:628:MET:SD	1:A:1272:SER:HA	2.59	0.43
1:A:1084:GLU:CD	1:A:1115:ILE:HD12	2.38	0.43
1:A:1115:ILE:HG12	1:A:1198:LEU:HB2	2.00	0.43
5:A:1312:CLR:H211	5:A:1312:CLR:H241	2.01	0.43
2:B:165:LEU:HD11	3:C:175:VAL:HG11	2.00	0.43
3:C:69:THR:CG2	3:C:82:GLN:HB3	2.46	0.43
3:C:176:LEU:O	3:C:177:GLN:HG3	2.18	0.43
5:A:1306:CLR:H231	5:A:1306:CLR:H272	1.69	0.43
5:A:1311:CLR:H211	5:A:1311:CLR:H232	1.70	0.43
3:C:36:TRP:HE1	3:C:79:LEU:HG	1.84	0.43
3:C:38:ARG:HD3	3:C:94:TYR:CZ	2.54	0.43
1:A:1129:GLU:OE1	1:A:1129:GLU:HA	2.18	0.43
3:C:149:LYS:HG3	3:C:182:THR:HG23	2.01	0.43
1:A:261:ILE:HD13	1:A:804:PHE:CE1	2.54	0.42
1:A:864:ILE:HD13	1:A:952:SER:HB2	2.01	0.42
1:A:906:THR:HG22	1:A:912:GLN:HG3	2.00	0.42
1:A:1153:ASN:O	1:A:1183:ARG:NH1	2.40	0.42
2:B:37:TYR:HE1	3:C:103:GLU:HB3	1.83	0.42
1:A:388:ILE:HD11	1:A:465:PHE:CE2	2.54	0.42
1:A:574:ASP:HA	1:A:577:ARG:HG2	2.00	0.42
1:A:1065:THR:HB	1:A:1241:ASP:H	1.84	0.42
1:A:1128:ALA:HB1	1:A:1165:TYR:CD1	2.48	0.42
5:A:1305:CLR:H183	5:A:1305:CLR:H212	2.00	0.42

*Continued on next page...*

*Continued from previous page...*

Atom-1	Atom-2	Interatomic distance (Å)	Clash overlap (Å)
1:A:743:ASP:HA	3:C:33:THR:OG1	2.19	0.42
2:B:87:ASP:O	2:B:109:LEU:HD23	2.20	0.42
1:A:213:LYS:HD2	5:A:1308:CLR:H41	2.01	0.42
1:A:744:ASP:HB2	3:C:105:TRP:CH2	2.55	0.42
1:A:847:ILE:HG22	1:A:851:PHE:CE2	2.54	0.42
1:A:247:TYR:O	1:A:247:TYR:CG	2.72	0.42
1:A:799:GLN:HG2	1:A:803:TRP:CE3	2.55	0.42
1:A:1115:ILE:CD1	1:A:1198:LEU:HD12	2.49	0.42
5:A:1304:CLR:H111	5:A:1304:CLR:H193	1.69	0.42
2:B:56:ILE:H	2:B:56:ILE:HG12	1.56	0.42
3:C:17:SER:HA	3:C:83:MET:O	2.20	0.42
1:A:868:ILE:HD13	1:A:982:VAL:HG13	2.01	0.42
1:A:1017:LEU:HD22	1:A:1017:LEU:HA	1.87	0.42
5:A:1312:CLR:H111	5:A:1312:CLR:H193	1.76	0.42
2:B:42:LEU:HD13	2:B:91:TYR:CE2	2.54	0.42
2:B:94:PHE:HE2	3:C:105:TRP:CD1	2.37	0.42
3:C:85:SER:O	3:C:85:SER:OG	2.27	0.42
3:C:174:ALA:HB2	3:C:183:LEU:HD12	2.01	0.42
1:A:178:ASP:HB3	1:A:365:ILE:HD11	2.01	0.42
1:A:622:TYR:HD1	1:A:625:LEU:HD23	1.84	0.42
1:A:856:GLN:HE22	1:A:968:LEU:HD13	1.84	0.42
1:A:758:LEU:HD23	1:A:758:LEU:HA	1.71	0.42
1:A:1122:LEU:HD12	1:A:1173:GLY:HA3	2.02	0.42
1:A:1234:LEU:O	1:A:1238:GLN:HG2	2.20	0.42
5:A:1305:CLR:H231	5:A:1305:CLR:H263	1.74	0.42
5:A:1310:CLR:H263	5:A:1310:CLR:H232	1.75	0.42
5:A:1313:CLR:H121	5:A:1313:CLR:H212	2.00	0.42
2:B:38:LEU:C	2:B:38:LEU:HD23	2.40	0.42
2:B:109:LEU:HA	2:B:109:LEU:HD12	1.87	0.42
1:A:197:MET:HE3	1:A:201:PHE:CE2	2.55	0.42
1:A:382:GLY:C	1:A:462:ASN:HB2	2.41	0.42
5:A:1303:CLR:H193	5:A:1303:CLR:H111	1.82	0.42
1:A:189:LYS:HB3	1:A:351:SER:HA	2.02	0.41
1:A:865:VAL:HG13	1:A:985:ALA:HB2	2.01	0.41
1:A:65:LEU:HD22	4:A:1301:R1H:C05	2.48	0.41
1:A:249:LYS:HD2	1:A:283:GLU:OE2	2.20	0.41
1:A:411:LYS:HD2	1:A:411:LYS:HA	1.81	0.41
1:A:1163:ASN:O	1:A:1167:THR:OG1	2.34	0.41
1:A:212:TRP:HA	1:A:215:THR:HG22	2.01	0.41
1:A:273:GLU:OE1	1:A:797:LEU:HD11	2.20	0.41
1:A:531:LEU:HD12	1:A:535:GLN:HB2	2.02	0.41

*Continued on next page...*



*Continued from previous page...*

Atom-1	Atom-2	Interatomic distance (Å)	Clash overlap (Å)
1:A:970:SER:OG	1:A:971:PHE:N	2.53	0.41
1:A:1056:LEU:HD11	1:A:1246:PHE:CE1	2.55	0.41
1:A:1056:LEU:HD21	1:A:1246:PHE:CZ	2.55	0.41
1:A:576:ALA:HB1	1:A:580:ARG:CZ	2.50	0.41
1:A:1115:ILE:HG22	1:A:1116:VAL:N	2.36	0.41
3:C:3:ILE:HG13	3:C:3:ILE:O	2.20	0.41
1:A:320:LEU:CD2	1:A:325:GLU:OE1	2.68	0.41
1:A:958:ARG:HH21	5:A:1304:CLR:H11	1.85	0.41
1:A:1084:GLU:HB3	1:A:1086:PHE:CE1	2.56	0.41
2:B:29:ILE:HG23	2:B:97:SER:CB	2.49	0.41
2:B:46:GLY:O	2:B:47:GLN:HG2	2.21	0.41
2:B:215:PHE:HE1	3:C:133:VAL:N	2.18	0.41
1:A:261:ILE:HD13	1:A:804:PHE:CZ	2.56	0.41
1:A:542:ALA:O	1:A:546:VAL:HG13	2.21	0.41
1:A:566:GLU:OE1	1:A:588:ARG:NH1	2.53	0.41
1:A:622:TYR:CD1	1:A:625:LEU:HD23	2.56	0.41
1:A:703:LEU:CD1	1:A:784:LEU:HD11	2.51	0.41
1:A:1267:TYR:CE2	1:A:1271:VAL:CG2	3.03	0.41
2:B:8:PRO:O	2:B:107:THR:HG21	2.18	0.41
1:A:735:ILE:HD13	1:A:735:ILE:HG21	1.86	0.41
1:A:910:LEU:HB3	1:A:912:GLN:HG2	2.03	0.41
3:C:69:THR:O	3:C:81:LEU:HD12	2.21	0.41
3:C:144:LEU:HD11	3:C:194:TRP:CG	2.56	0.41
1:A:232:TRP:O	1:A:236:LEU:HG	2.21	0.41
1:A:700:ILE:HG13	1:A:829:ILE:CG1	2.51	0.41
1:A:731:ILE:CD1	1:A:758:LEU:HB3	2.47	0.41
5:A:1308:CLR:H272	5:A:1308:CLR:H232	1.86	0.41
5:A:1311:CLR:H232	5:A:1311:CLR:H272	1.82	0.41
1:A:39:MET:CE	1:A:359:ARG:HA	2.49	0.41
1:A:1061:LYS:HE3	1:A:1062:LYS:H	1.85	0.40
1:A:1085:ARG:HG2	1:A:1109:LEU:HD22	2.03	0.40
1:A:1122:LEU:CD2	1:A:1130:ASN:OD1	2.59	0.40
2:B:198:THR:CB	2:B:214:SER:HB3	2.50	0.40
1:A:131:ILE:O	1:A:135:PHE:HB2	2.21	0.40
1:A:490:TYR:HE1	1:A:915:LYS:HE2	1.86	0.40
1:A:702:LYS:O	1:A:702:LYS:HG3	2.21	0.40
2:B:42:LEU:HD13	2:B:91:TYR:CZ	2.57	0.40
2:B:201:ALA:HB3	2:B:211:ILE:HB	2.03	0.40
3:C:87:ARG:NH1	3:C:89:GLU:OE2	2.54	0.40
1:A:62:GLY:HA2	1:A:199:THR:OG1	2.21	0.40
1:A:296:ASN:ND2	1:A:774:GLY:HA3	2.37	0.40

*Continued on next page...*



Continued from previous page...

Atom-1	Atom-2	Interatomic distance (Å)	Clash overlap (Å)
1:A:702:LYS:HE3	1:A:702:LYS:HB2	1.36	0.40
1:A:876:MET:HE2	1:A:879:LEU:HD12	2.03	0.40
5:A:1304:CLR:H25	5:A:1304:CLR:H221	1.91	0.40
5:A:1309:CLR:H222	5:A:1309:CLR:H25	1.68	0.40
5:A:1312:CLR:H182	5:A:1312:CLR:H8	1.73	0.40
3:C:63:SER:OG	3:C:64:VAL:N	2.54	0.40
1:A:221:ILE:HD13	1:A:312:LEU:HD23	2.03	0.40
2:B:7:THR:CB	2:B:8:PRO:HD3	2.44	0.40
2:B:68:SER:OG	2:B:79:LYS:HB2	2.21	0.40
1:A:471:GLY:HA2	1:A:547:ARG:HH21	1.87	0.40
1:A:876:MET:HE2	1:A:876:MET:HA	2.03	0.40
1:A:1026:LEU:HB2	1:A:1104:LEU:HA	2.03	0.40
1:A:1164:LYS:H	1:A:1164:LYS:HG2	1.72	0.40
1:A:1198:LEU:HD22	1:A:1228:ILE:HB	2.04	0.40
1:A:1267:TYR:CE2	1:A:1271:VAL:HG21	2.56	0.40
2:B:122:ILE:CG2	2:B:215:PHE:CD2	2.92	0.40

There are no symmetry-related clashes.

## 5.3 Torsion angles

### 5.3.1 Protein backbone

In the following table, the Percentiles column shows the percent Ramachandran outliers of the chain as a percentile score with respect to all PDB entries followed by that with respect to all EM entries.

The Analysed column shows the number of residues for which the backbone conformation was analysed, and the total number of residues.

Mol	Chain	Analysed	Favoured	Allowed	Outliers	Percentiles	
1	A	1158/1280 (90%)	1109 (96%)	49 (4%)	0	100	100
2	B	210/219 (96%)	195 (93%)	15 (7%)	0	100	100
3	C	216/218 (99%)	196 (91%)	20 (9%)	0	100	100
All	All	1584/1717 (92%)	1500 (95%)	84 (5%)	0	100	100

There are no Ramachandran outliers to report.

### 5.3.2 Protein sidechains ⓘ

In the following table, the Percentiles column shows the percent sidechain outliers of the chain as a percentile score with respect to all PDB entries followed by that with respect to all EM entries.

The Analysed column shows the number of residues for which the sidechain conformation was analysed, and the total number of residues.

Mol	Chain	Analysed	Rotameric	Outliers	Percentiles	
1	A	960/1063 (90%)	950 (99%)	10 (1%)	73	85
2	B	190/195 (97%)	185 (97%)	5 (3%)	41	65
3	C	185/185 (100%)	180 (97%)	5 (3%)	40	65
All	All	1335/1443 (92%)	1315 (98%)	20 (2%)	60	78

All (20) residues with a non-rotameric sidechain are listed below:

Mol	Chain	Res	Type
1	A	65	LEU
1	A	344	SER
1	A	372	LYS
1	A	375	ILE
1	A	376	ASP
1	A	377	SER
1	A	699	ARG
1	A	702	LYS
1	A	1017	LEU
1	A	1272	SER
2	B	56	ILE
2	B	58	ASN
2	B	110	GLU
2	B	111	ILE
2	B	113	ARG
3	C	116	THR
3	C	118	SER
3	C	121	LYS
3	C	122	THR
3	C	149	LYS

Sometimes sidechains can be flipped to improve hydrogen bonding and reduce clashes. All (29) such sidechains are listed below:

Mol	Chain	Res	Type
1	A	143	GLN

*Continued on next page...*

*Continued from previous page...*

Mol	Chain	Res	Type
1	A	166	HIS
1	A	172	ASN
1	A	296	ASN
1	A	398	HIS
1	A	438	GLN
1	A	462	ASN
1	A	475	GLN
1	A	537	GLN
1	A	725	GLN
1	A	824	GLN
1	A	839	ASN
1	A	912	GLN
1	A	1105	ASN
1	A	1130	ASN
1	A	1153	ASN
1	A	1182	GLN
1	A	1239	ASN
1	A	1247	GLN
1	A	1248	ASN
2	B	27	GLN
2	B	31	HIS
2	B	98	HIS
2	B	161	GLN
2	B	194	HIS
2	B	216	ASN
2	B	218	ASN
3	C	57	ASN
3	C	111	GLN

### 5.3.3 RNA ⓘ

There are no RNA molecules in this entry.

### 5.4 Non-standard residues in protein, DNA, RNA chains ⓘ

There are no non-standard protein/DNA/RNA residues in this entry.

### 5.5 Carbohydrates ⓘ

There are no oligosaccharides in this entry.

## 5.6 Ligand geometry

13 ligands are modelled in this entry.

In the following table, the Counts columns list the number of bonds (or angles) for which Mogul statistics could be retrieved, the number of bonds (or angles) that are observed in the model and the number of bonds (or angles) that are defined in the Chemical Component Dictionary. The Link column lists molecule types, if any, to which the group is linked. The Z score for a bond length (or angle) is the number of standard deviations the observed value is removed from the expected value. A bond length (or angle) with  $|Z| > 2$  is considered an outlier worth inspection. RMSZ is the root-mean-square of all Z scores of the bond lengths (or angles).

Mol	Type	Chain	Res	Link	Bond lengths			Bond angles		
					Counts	RMSZ	# Z  > 2	Counts	RMSZ	# Z  > 2
5	CLR	A	1309	-	31,31,31	1.07	2 (6%)	48,48,48	1.19	4 (8%)
5	CLR	A	1307	-	31,31,31	1.01	1 (3%)	48,48,48	1.16	5 (10%)
5	CLR	A	1304	-	31,31,31	1.01	3 (9%)	48,48,48	1.40	8 (16%)
5	CLR	A	1308	-	31,31,31	1.03	2 (6%)	48,48,48	1.40	7 (14%)
5	CLR	A	1311	-	31,31,31	0.99	2 (6%)	48,48,48	1.51	8 (16%)
4	R1H	A	1302	-	53,53,53	2.54	20 (37%)	74,74,74	1.99	20 (27%)
4	R1H	A	1301	-	53,53,53	2.50	21 (39%)	74,74,74	2.12	17 (22%)
5	CLR	A	1306	-	31,31,31	0.89	2 (6%)	48,48,48	1.28	5 (10%)
5	CLR	A	1312	-	31,31,31	0.94	2 (6%)	48,48,48	1.40	7 (14%)
5	CLR	A	1305	-	31,31,31	0.95	2 (6%)	48,48,48	1.66	9 (18%)
5	CLR	A	1310	-	31,31,31	1.03	2 (6%)	48,48,48	1.19	6 (12%)
5	CLR	A	1303	-	31,31,31	0.98	2 (6%)	48,48,48	1.48	8 (16%)
5	CLR	A	1313	-	31,31,31	0.85	1 (3%)	48,48,48	1.31	7 (14%)

In the following table, the Chirals column lists the number of chiral outliers, the number of chiral centers analysed, the number of these observed in the model and the number defined in the Chemical Component Dictionary. Similar counts are reported in the Torsion and Rings columns. '-' means no outliers of that kind were identified.

Mol	Type	Chain	Res	Link	Chirals	Torsions	Rings
5	CLR	A	1309	-	-	5/10/68/68	0/4/4/4
5	CLR	A	1307	-	-	1/10/68/68	0/4/4/4
5	CLR	A	1304	-	-	2/10/68/68	0/4/4/4
5	CLR	A	1308	-	-	7/10/68/68	0/4/4/4
5	CLR	A	1311	-	-	8/10/68/68	0/4/4/4
4	R1H	A	1302	-	-	5/29/38/38	0/6/6/6
4	R1H	A	1301	-	-	13/29/38/38	0/6/6/6

*Continued on next page...*

*Continued from previous page...*

Mol	Type	Chain	Res	Link	Chirals	Torsions	Rings
5	CLR	A	1306	-	-	9/10/68/68	0/4/4/4
5	CLR	A	1312	-	-	5/10/68/68	0/4/4/4
5	CLR	A	1305	-	-	3/10/68/68	0/4/4/4
5	CLR	A	1310	-	-	3/10/68/68	0/4/4/4
5	CLR	A	1303	-	-	4/10/68/68	0/4/4/4
5	CLR	A	1313	-	-	3/10/68/68	0/4/4/4

All (62) bond length outliers are listed below:

Mol	Chain	Res	Type	Atoms	Z	Observed(Å)	Ideal(Å)
4	A	1302	R1H	C13-N08	-7.73	1.29	1.47
4	A	1301	R1H	C13-N08	-7.55	1.30	1.47
4	A	1301	R1H	C07-N08	-6.42	1.36	1.47
4	A	1302	R1H	C07-N08	-6.06	1.36	1.47
4	A	1301	R1H	C11-C06	-5.28	1.30	1.40
4	A	1302	R1H	C31-N30	5.05	1.49	1.35
4	A	1302	R1H	C35-C40	-4.80	1.34	1.42
4	A	1301	R1H	C31-N30	4.77	1.48	1.35
4	A	1302	R1H	C22-N21	4.38	1.47	1.35
4	A	1302	R1H	C18-N21	4.38	1.50	1.41
4	A	1302	R1H	C11-C06	-4.33	1.31	1.40
4	A	1301	R1H	C35-C40	-4.13	1.35	1.42
4	A	1301	R1H	C22-N21	4.05	1.46	1.35
4	A	1301	R1H	C18-N21	3.93	1.49	1.41
4	A	1302	R1H	C29-N30	3.76	1.49	1.41
4	A	1301	R1H	C29-N30	3.58	1.48	1.41
4	A	1302	R1H	O47-C04	3.58	1.42	1.37
4	A	1302	R1H	C05-C06	3.57	1.45	1.39
4	A	1301	R1H	C05-C06	3.48	1.45	1.39
4	A	1302	R1H	C12-C11	3.45	1.45	1.39
4	A	1301	R1H	O47-C04	3.32	1.42	1.37
4	A	1302	R1H	O02-C03	3.23	1.42	1.37
4	A	1302	R1H	C24-C22	3.16	1.56	1.50
4	A	1302	R1H	C09-C10	3.10	1.57	1.51
5	A	1309	CLR	C10-C9	-3.00	1.51	1.56
5	A	1303	CLR	C10-C9	-2.93	1.51	1.56
5	A	1310	CLR	C10-C9	-2.93	1.51	1.56
4	A	1301	R1H	C24-C22	2.93	1.56	1.50
4	A	1301	R1H	C09-N08	-2.90	1.38	1.46
4	A	1301	R1H	O23-C22	-2.86	1.17	1.23
4	A	1302	R1H	O43-C27	2.82	1.41	1.37

*Continued on next page...*

*Continued from previous page...*

Mol	Chain	Res	Type	Atoms	Z	Observed(Å)	Ideal(Å)
5	A	1307	CLR	C10-C9	-2.78	1.51	1.56
4	A	1301	R1H	C42-N41	2.77	1.36	1.31
4	A	1301	R1H	O32-C31	-2.72	1.17	1.23
5	A	1305	CLR	C10-C9	-2.71	1.51	1.56
5	A	1313	CLR	C10-C9	-2.69	1.51	1.56
4	A	1301	R1H	O45-C26	2.68	1.41	1.37
5	A	1312	CLR	C13-C14	-2.68	1.49	1.55
4	A	1301	R1H	C09-C10	2.67	1.57	1.51
4	A	1302	R1H	C09-N08	-2.65	1.39	1.46
4	A	1301	R1H	O43-C27	2.62	1.41	1.37
5	A	1304	CLR	C10-C9	-2.59	1.51	1.56
5	A	1311	CLR	C10-C9	-2.56	1.51	1.56
4	A	1302	R1H	O23-C22	-2.52	1.18	1.23
5	A	1306	CLR	C13-C14	-2.46	1.50	1.55
5	A	1312	CLR	C10-C9	-2.44	1.51	1.56
4	A	1302	R1H	O32-C31	-2.44	1.18	1.23
4	A	1302	R1H	C42-N41	2.43	1.35	1.31
5	A	1308	CLR	C10-C9	-2.42	1.52	1.56
4	A	1302	R1H	O45-C26	2.37	1.40	1.37
4	A	1301	R1H	C33-C31	2.34	1.55	1.50
4	A	1301	R1H	C12-C11	2.33	1.43	1.39
5	A	1311	CLR	C13-C14	-2.31	1.50	1.55
5	A	1310	CLR	C13-C14	-2.28	1.50	1.55
5	A	1306	CLR	C10-C9	-2.28	1.52	1.56
5	A	1305	CLR	C13-C14	-2.25	1.50	1.55
5	A	1309	CLR	C13-C14	-2.25	1.50	1.55
5	A	1304	CLR	C13-C14	-2.24	1.50	1.55
4	A	1301	R1H	O02-C03	2.20	1.40	1.37
5	A	1304	CLR	C19-C10	-2.11	1.51	1.54
5	A	1308	CLR	C13-C14	-2.06	1.51	1.55
5	A	1303	CLR	C13-C14	-2.01	1.51	1.55

All (111) bond angle outliers are listed below:

Mol	Chain	Res	Type	Atoms	Z	Observed(°)	Ideal(°)
4	A	1302	R1H	C33-C42-N41	-8.01	118.83	125.19
4	A	1301	R1H	C33-C42-N41	-6.49	120.04	125.19
4	A	1301	R1H	C07-N08-C09	6.00	117.57	109.91
4	A	1301	R1H	O45-C26-C27	5.61	123.22	115.41
4	A	1301	R1H	O02-C03-C04	5.37	122.89	115.41
5	A	1311	CLR	C13-C17-C20	-5.15	111.42	119.49
5	A	1305	CLR	C17-C13-C14	5.12	106.14	100.07

*Continued on next page...*

*Continued from previous page...*

Mol	Chain	Res	Type	Atoms	Z	Observed(°)	Ideal(°)
4	A	1301	R1H	C07-N08-C13	4.99	120.48	112.94
4	A	1301	R1H	O43-C27-C26	4.86	122.18	115.41
4	A	1302	R1H	C46-O45-C26	-4.48	110.77	117.53
5	A	1305	CLR	C11-C9-C10	-4.37	107.33	113.08
4	A	1302	R1H	C34-C33-C42	4.29	121.14	116.87
4	A	1302	R1H	O45-C26-C27	4.20	121.27	115.41
5	A	1303	CLR	C17-C13-C14	4.17	105.01	100.07
4	A	1301	R1H	O45-C26-C25	-4.11	117.05	124.12
4	A	1302	R1H	O43-C27-C26	4.05	121.05	115.41
4	A	1301	R1H	O02-C03-C12	-4.03	117.19	124.12
4	A	1302	R1H	O02-C03-C04	3.88	120.81	115.41
4	A	1302	R1H	C06-C07-N08	3.80	116.62	112.14
5	A	1303	CLR	C11-C9-C10	-3.70	108.21	113.08
5	A	1303	CLR	C13-C17-C20	-3.65	113.77	119.49
5	A	1305	CLR	C13-C14-C8	-3.65	108.98	114.38
5	A	1312	CLR	C13-C14-C8	-3.59	109.07	114.38
5	A	1306	CLR	C13-C17-C20	-3.56	113.92	119.49
4	A	1301	R1H	O47-C04-C03	3.50	120.29	115.41
4	A	1301	R1H	O43-C27-C28	-3.50	118.10	124.12
4	A	1302	R1H	O47-C04-C03	3.45	120.21	115.41
5	A	1313	CLR	C11-C9-C10	-3.38	108.63	113.08
5	A	1312	CLR	C19-C10-C9	-3.35	107.69	111.68
4	A	1301	R1H	C01-O02-C03	-3.34	112.49	117.53
5	A	1304	CLR	C17-C13-C14	3.33	104.02	100.07
5	A	1308	CLR	C14-C8-C9	-3.32	104.65	109.09
5	A	1308	CLR	C13-C17-C20	-3.30	114.32	119.49
5	A	1303	CLR	C13-C14-C8	-3.29	109.51	114.38
4	A	1302	R1H	O45-C26-C25	-3.23	118.57	124.12
5	A	1308	CLR	C4-C5-C10	3.19	120.66	116.42
5	A	1310	CLR	C11-C9-C10	-3.18	108.89	113.08
5	A	1309	CLR	C11-C9-C10	-3.18	108.89	113.08
5	A	1305	CLR	C13-C17-C20	-3.17	114.51	119.49
5	A	1304	CLR	C19-C10-C9	-3.14	107.93	111.68
5	A	1312	CLR	C13-C17-C20	-3.12	114.60	119.49
5	A	1313	CLR	C17-C13-C14	3.07	103.72	100.07
4	A	1301	R1H	C34-C33-C42	3.07	119.93	116.87
5	A	1311	CLR	C11-C12-C13	-3.07	107.51	112.78
4	A	1302	R1H	C07-N08-C13	-3.07	108.31	112.94
5	A	1311	CLR	C2-C3-C4	-3.00	106.20	110.31
5	A	1305	CLR	C10-C9-C8	-2.93	108.35	112.73
4	A	1301	R1H	C46-O45-C26	-2.90	113.15	117.53
5	A	1313	CLR	C13-C17-C20	-2.89	114.96	119.49

*Continued on next page...*

*Continued from previous page...*

Mol	Chain	Res	Type	Atoms	Z	Observed(°)	Ideal(°)
4	A	1302	R1H	C44-O43-C27	-2.89	113.17	117.53
5	A	1306	CLR	C13-C14-C8	-2.87	110.13	114.38
5	A	1304	CLR	C11-C9-C10	-2.84	109.34	113.08
4	A	1302	R1H	C42-N41-C40	2.72	120.19	116.91
5	A	1309	CLR	C13-C17-C20	-2.70	115.25	119.49
5	A	1307	CLR	C12-C11-C9	-2.67	108.49	113.11
5	A	1313	CLR	C19-C10-C9	-2.66	108.51	111.68
5	A	1313	CLR	C11-C12-C13	-2.65	108.23	112.78
5	A	1303	CLR	C11-C12-C13	-2.65	108.23	112.78
5	A	1307	CLR	C11-C12-C13	-2.64	108.25	112.78
4	A	1302	R1H	O47-C04-C05	-2.63	119.59	124.12
5	A	1311	CLR	C8-C7-C6	-2.60	109.00	112.73
5	A	1312	CLR	C4-C5-C10	2.59	119.86	116.42
4	A	1302	R1H	C24-C22-N21	2.59	121.01	116.06
4	A	1302	R1H	C07-N08-C09	2.57	113.19	109.91
5	A	1307	CLR	C4-C5-C10	2.56	119.82	116.42
5	A	1312	CLR	C17-C13-C14	2.56	103.10	100.07
4	A	1302	R1H	O02-C03-C12	-2.55	119.72	124.12
5	A	1308	CLR	C11-C12-C13	-2.52	108.46	112.78
5	A	1303	CLR	C21-C20-C22	-2.50	106.45	110.36
5	A	1304	CLR	C4-C5-C10	2.49	119.73	116.42
5	A	1304	CLR	C13-C14-C8	-2.46	110.74	114.38
4	A	1302	R1H	C48-O47-C04	-2.46	113.82	117.53
4	A	1301	R1H	C42-N41-C40	2.45	119.86	116.91
5	A	1306	CLR	C7-C8-C9	2.43	112.66	109.71
5	A	1311	CLR	C3-C4-C5	-2.39	107.98	112.03
4	A	1302	R1H	O43-C27-C28	-2.38	120.02	124.12
5	A	1311	CLR	C17-C13-C14	2.38	102.89	100.07
5	A	1310	CLR	C13-C17-C20	-2.38	115.76	119.49
5	A	1313	CLR	C4-C5-C10	2.35	119.54	116.42
5	A	1307	CLR	C7-C8-C14	-2.34	107.51	110.91
5	A	1308	CLR	C21-C20-C17	-2.34	109.34	112.92
5	A	1310	CLR	C4-C5-C10	2.33	119.52	116.42
5	A	1305	CLR	C11-C12-C13	-2.31	108.82	112.78
5	A	1313	CLR	C13-C14-C8	-2.29	110.99	114.38
5	A	1312	CLR	C11-C9-C10	-2.27	110.09	113.08
5	A	1306	CLR	C4-C5-C10	2.25	119.41	116.42
5	A	1304	CLR	C10-C9-C8	-2.24	109.38	112.73
5	A	1311	CLR	C11-C9-C10	-2.24	110.13	113.08
5	A	1308	CLR	C17-C13-C14	2.22	102.70	100.07
5	A	1310	CLR	C17-C13-C14	2.21	102.69	100.07
5	A	1303	CLR	C4-C5-C10	2.17	119.31	116.42

*Continued on next page...*



*Continued from previous page...*

Mol	Chain	Res	Type	Atoms	Z	Observed(°)	Ideal(°)
4	A	1302	R1H	C10-C09-N08	2.16	113.42	111.07
5	A	1312	CLR	C4-C5-C6	-2.15	117.51	120.61
5	A	1310	CLR	C3-C4-C5	-2.15	108.38	112.03
5	A	1311	CLR	C13-C14-C8	-2.14	111.20	114.38
4	A	1301	R1H	C24-C22-N21	2.14	120.15	116.06
5	A	1304	CLR	C11-C12-C13	-2.13	109.13	112.78
5	A	1309	CLR	C19-C10-C9	-2.10	109.17	111.68
5	A	1309	CLR	C11-C12-C13	-2.09	109.19	112.78
5	A	1305	CLR	C18-C13-C14	-2.09	107.82	111.71
5	A	1306	CLR	C19-C10-C9	-2.08	109.20	111.68
5	A	1305	CLR	C2-C1-C10	-2.08	108.23	112.74
5	A	1303	CLR	C23-C22-C20	-2.08	109.06	115.03
4	A	1302	R1H	O23-C22-C24	-2.08	117.22	121.01
5	A	1310	CLR	C13-C14-C8	-2.08	111.31	114.38
4	A	1301	R1H	O47-C04-C05	-2.07	120.56	124.12
5	A	1308	CLR	C2-C3-C4	-2.05	107.49	110.31
5	A	1307	CLR	C21-C20-C22	-2.05	107.15	110.36
5	A	1304	CLR	C21-C20-C22	-2.04	107.17	110.36
5	A	1305	CLR	C18-C13-C12	2.04	113.81	110.59
4	A	1301	R1H	C18-N21-C22	-2.02	121.34	126.58

There are no chirality outliers.

All (68) torsion outliers are listed below:

Mol	Chain	Res	Type	Atoms
5	A	1306	CLR	C13-C17-C20-C21
5	A	1306	CLR	C21-C20-C22-C23
5	A	1306	CLR	C16-C17-C20-C22
5	A	1306	CLR	C13-C17-C20-C22
5	A	1305	CLR	C21-C20-C22-C23
5	A	1306	CLR	C16-C17-C20-C21
5	A	1311	CLR	C13-C17-C20-C22
5	A	1308	CLR	C13-C17-C20-C22
4	A	1302	R1H	C04-C03-O02-C01
5	A	1308	CLR	C13-C17-C20-C21
5	A	1308	CLR	C17-C20-C22-C23
4	A	1302	R1H	C12-C03-O02-C01
5	A	1308	CLR	C21-C20-C22-C23
5	A	1304	CLR	C17-C20-C22-C23
4	A	1301	R1H	C12-C03-O02-C01
5	A	1304	CLR	C21-C20-C22-C23
5	A	1307	CLR	C20-C22-C23-C24

*Continued on next page...*

*Continued from previous page...*

Mol	Chain	Res	Type	Atoms
5	A	1306	CLR	C17-C20-C22-C23
4	A	1301	R1H	C05-C04-O47-C48
4	A	1301	R1H	C28-C27-O43-C44
5	A	1310	CLR	C17-C20-C22-C23
5	A	1306	CLR	C22-C23-C24-C25
4	A	1301	R1H	C14-C13-N08-C09
5	A	1310	CLR	C22-C23-C24-C25
5	A	1310	CLR	C21-C20-C22-C23
5	A	1308	CLR	C20-C22-C23-C24
5	A	1311	CLR	C22-C23-C24-C25
4	A	1301	R1H	C03-C04-O47-C48
4	A	1302	R1H	C27-C26-O45-C46
4	A	1301	R1H	C26-C27-O43-C44
5	A	1309	CLR	C23-C24-C25-C27
4	A	1301	R1H	C14-C13-N08-C07
4	A	1301	R1H	N08-C13-C14-C15
4	A	1301	R1H	C04-C03-O02-C01
5	A	1306	CLR	C20-C22-C23-C24
5	A	1311	CLR	C21-C20-C22-C23
5	A	1309	CLR	C17-C20-C22-C23
5	A	1312	CLR	C22-C23-C24-C25
5	A	1308	CLR	C16-C17-C20-C21
5	A	1309	CLR	C23-C24-C25-C26
5	A	1305	CLR	C20-C22-C23-C24
5	A	1311	CLR	C13-C17-C20-C21
5	A	1313	CLR	C22-C23-C24-C25
5	A	1313	CLR	C20-C22-C23-C24
5	A	1309	CLR	C22-C23-C24-C25
5	A	1312	CLR	C17-C20-C22-C23
4	A	1302	R1H	C25-C26-O45-C46
5	A	1308	CLR	C16-C17-C20-C22
5	A	1312	CLR	C21-C20-C22-C23
5	A	1311	CLR	C16-C17-C20-C22
5	A	1311	CLR	C16-C17-C20-C21
4	A	1301	R1H	C13-C14-C15-C20
4	A	1301	R1H	C27-C26-O45-C46
4	A	1301	R1H	C13-C14-C15-C16
5	A	1303	CLR	C22-C23-C24-C25
5	A	1311	CLR	C23-C24-C25-C27
5	A	1305	CLR	C17-C20-C22-C23
5	A	1313	CLR	C21-C20-C22-C23
5	A	1312	CLR	C23-C24-C25-C27

*Continued on next page...*

*Continued from previous page...*

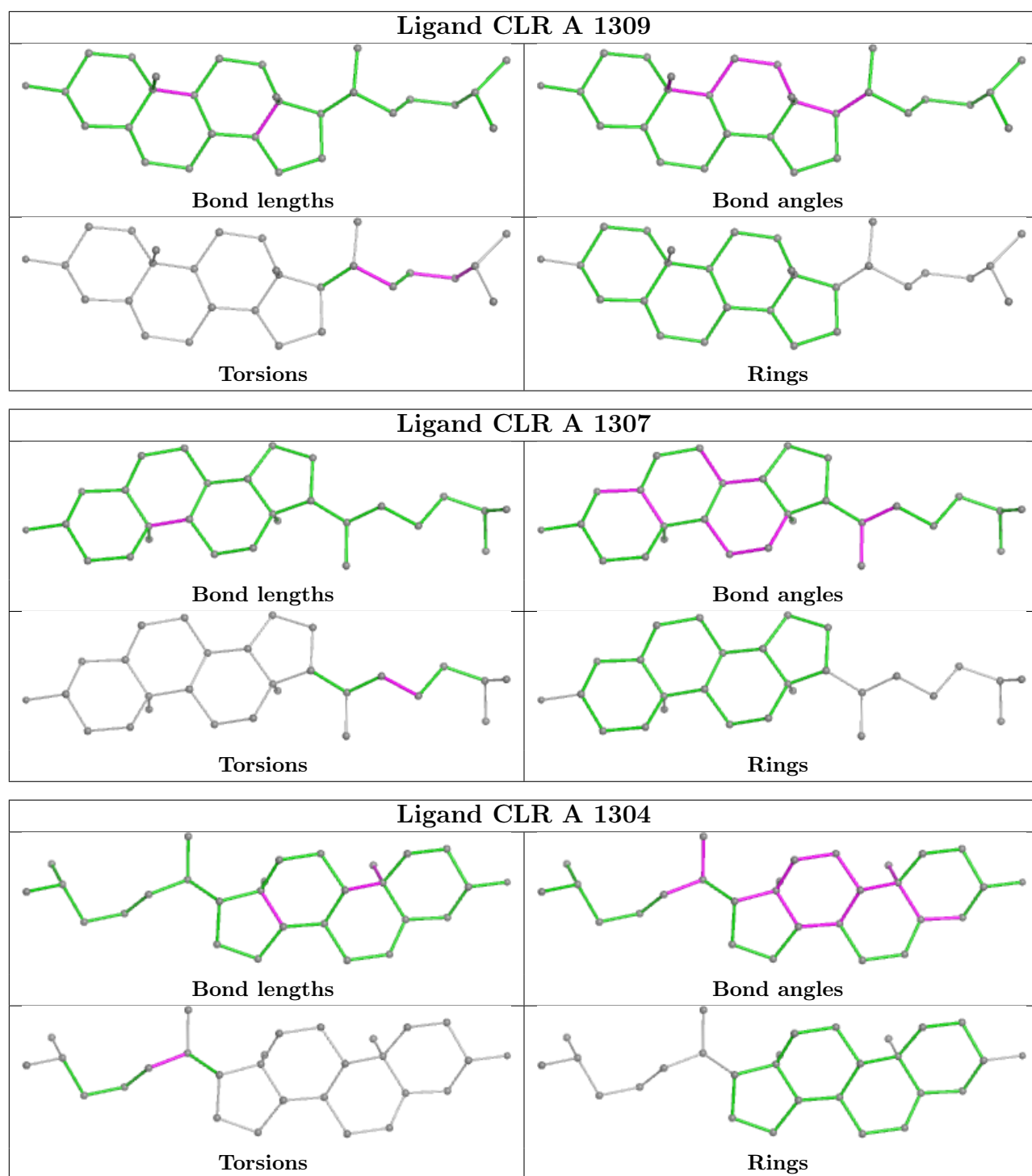
Mol	Chain	Res	Type	Atoms
5	A	1303	CLR	C23-C24-C25-C27
4	A	1301	R1H	C25-C26-O45-C46
5	A	1311	CLR	C23-C24-C25-C26
5	A	1303	CLR	C20-C22-C23-C24
5	A	1306	CLR	C23-C24-C25-C27
5	A	1312	CLR	C23-C24-C25-C26
5	A	1303	CLR	C23-C24-C25-C26
4	A	1302	R1H	C14-C13-N08-C07
5	A	1309	CLR	C21-C20-C22-C23

There are no ring outliers.

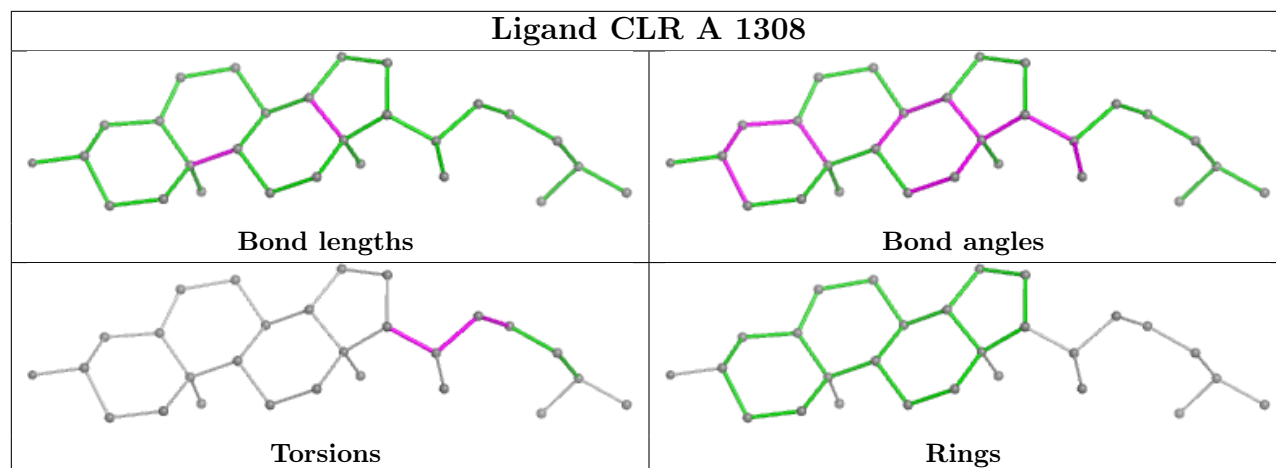
13 monomers are involved in 54 short contacts:

Mol	Chain	Res	Type	Clashes	Symm-Clashes
5	A	1309	CLR	2	0
5	A	1307	CLR	1	0
5	A	1304	CLR	9	0
5	A	1308	CLR	5	0
5	A	1311	CLR	3	0
4	A	1302	R1H	2	0
4	A	1301	R1H	7	0
5	A	1306	CLR	6	0
5	A	1312	CLR	7	0
5	A	1305	CLR	4	0
5	A	1310	CLR	6	0
5	A	1303	CLR	2	0
5	A	1313	CLR	3	0

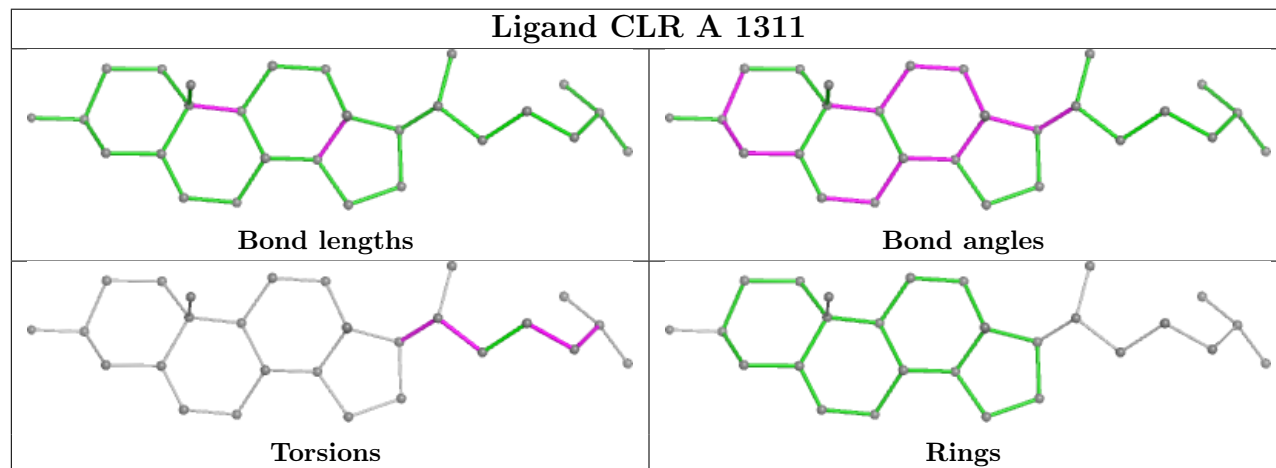
The following is a two-dimensional graphical depiction of Mogul quality analysis of bond lengths, bond angles, torsion angles, and ring geometry for all instances of the Ligand of Interest. In addition, ligands with molecular weight > 250 and outliers as shown on the validation Tables will also be included. For torsion angles, if less than 5% of the Mogul distribution of torsion angles is within 10 degrees of the torsion angle in question, then that torsion angle is considered an outlier. Any bond that is central to one or more torsion angles identified as an outlier by Mogul will be highlighted in the graph. For rings, the root-mean-square deviation (RMSD) between the ring in question and similar rings identified by Mogul is calculated over all ring torsion angles. If the average RMSD is greater than 60 degrees and the minimal RMSD between the ring in question and any Mogul-identified rings is also greater than 60 degrees, then that ring is considered an outlier. The outliers are highlighted in purple. The color gray indicates Mogul did not find sufficient equivalents in the CSD to analyse the geometry.

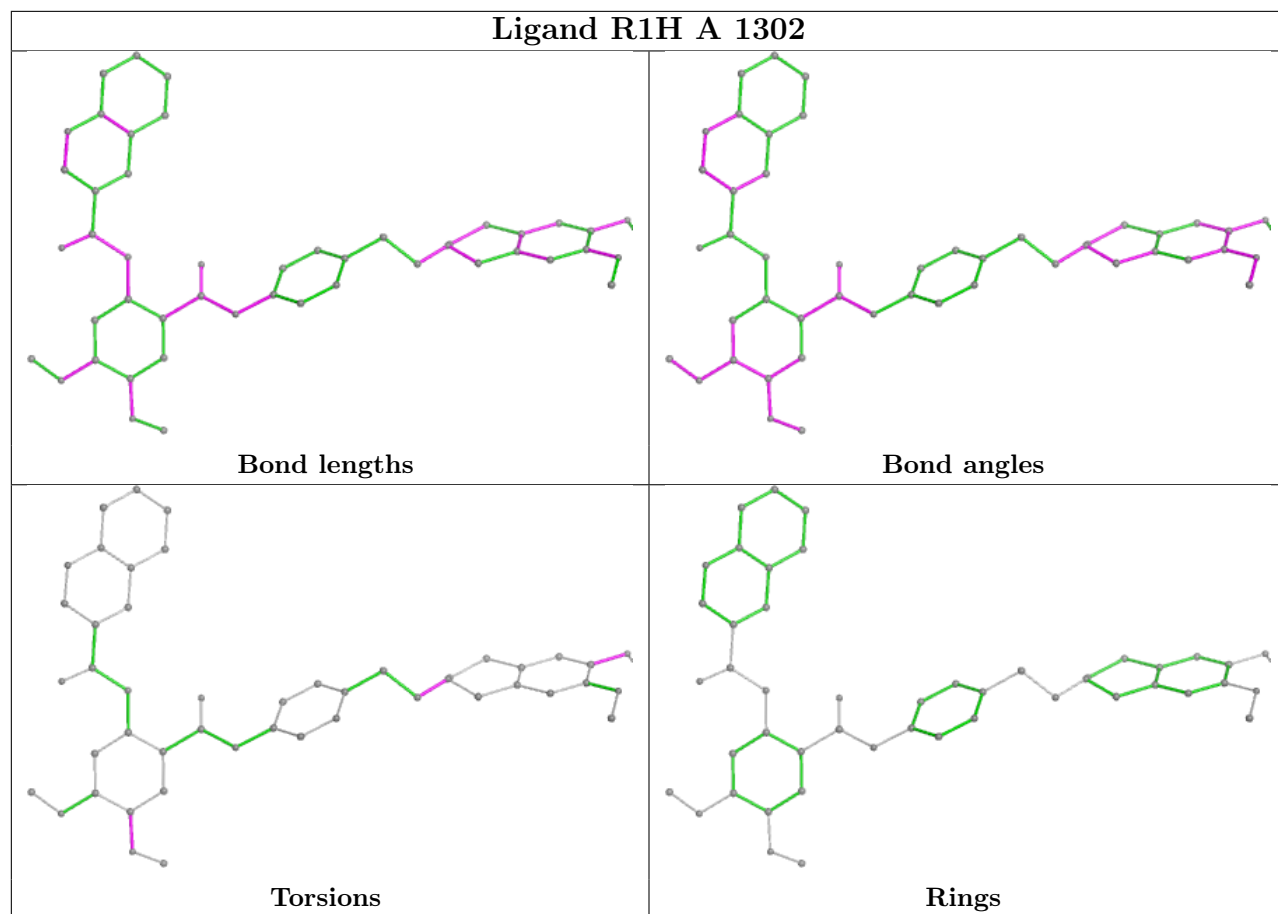


## Ligand CLR A 1308

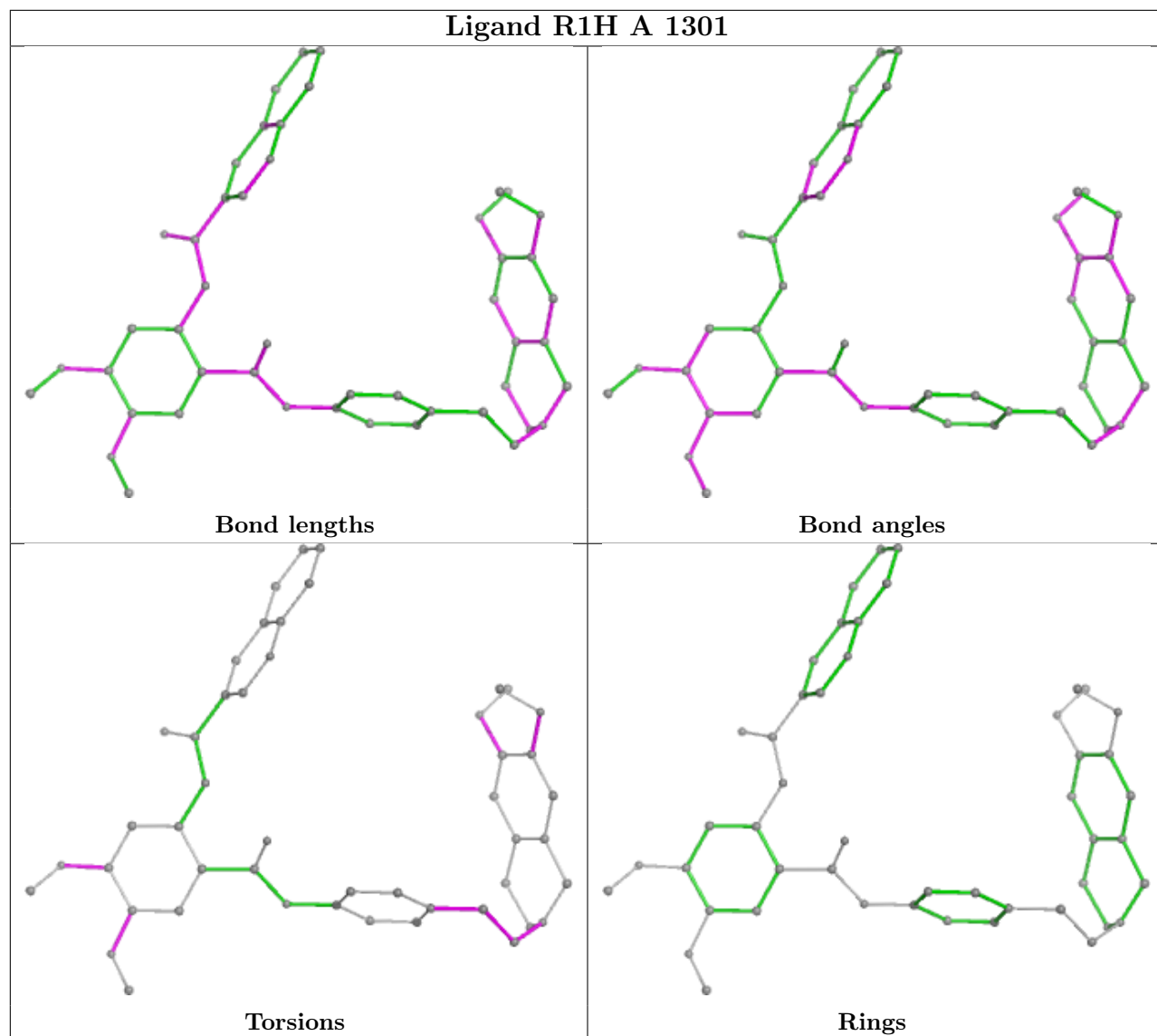


## Ligand CLR A 1311

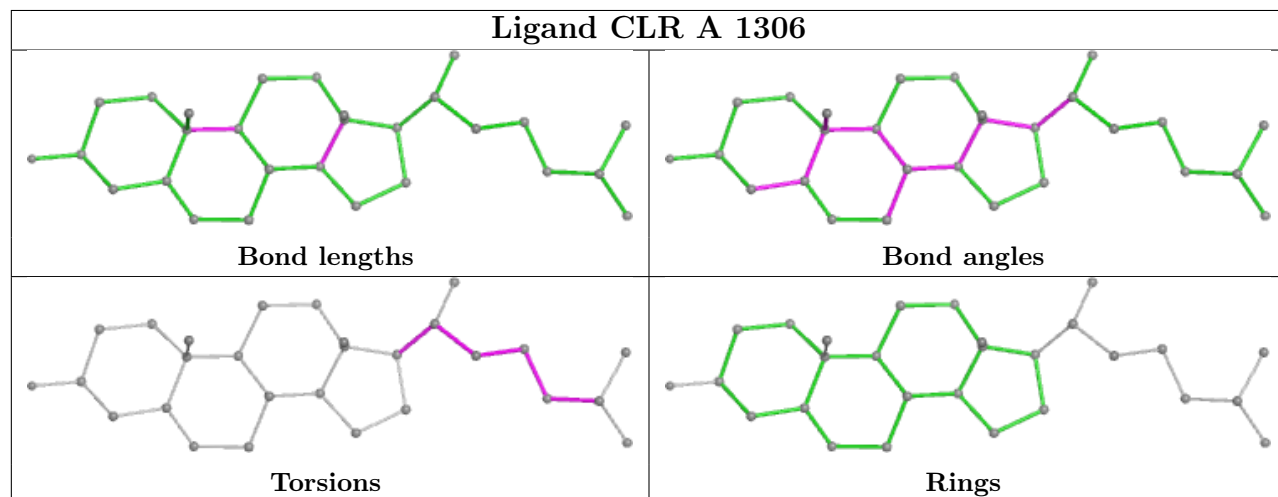


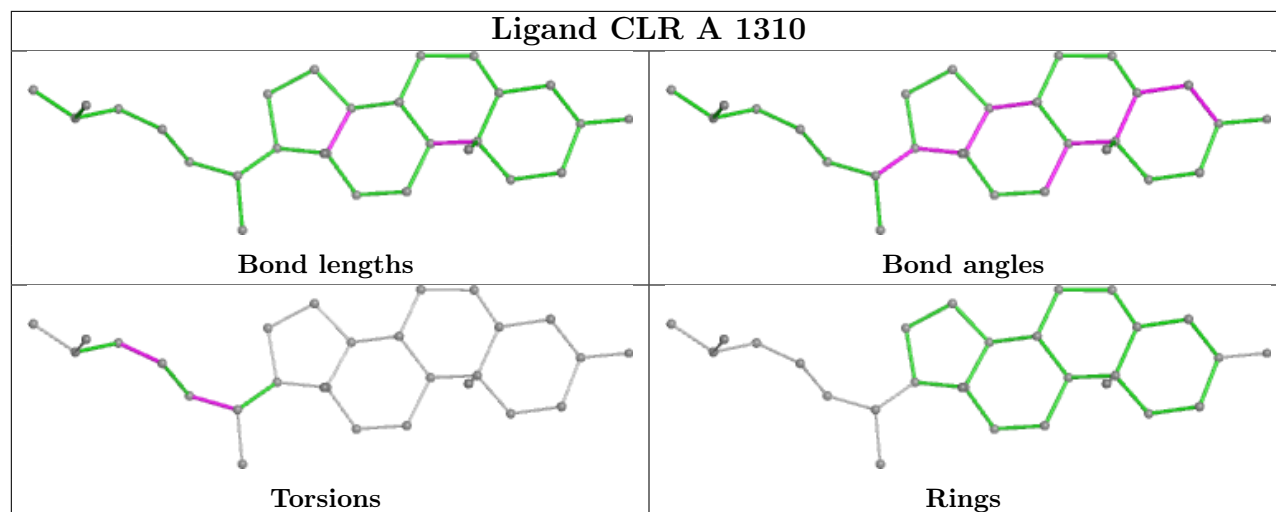
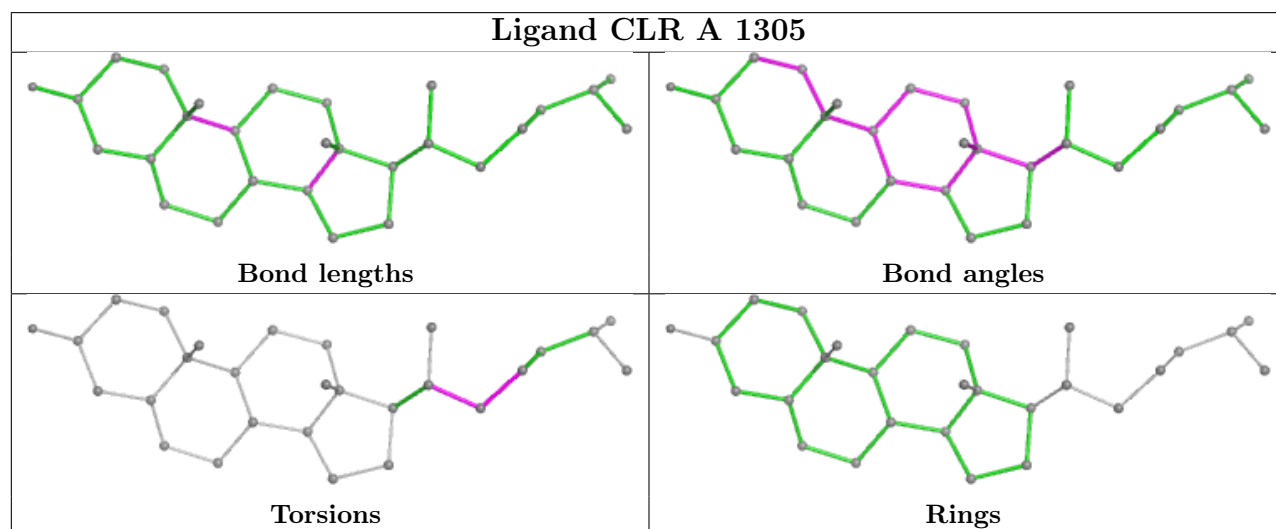
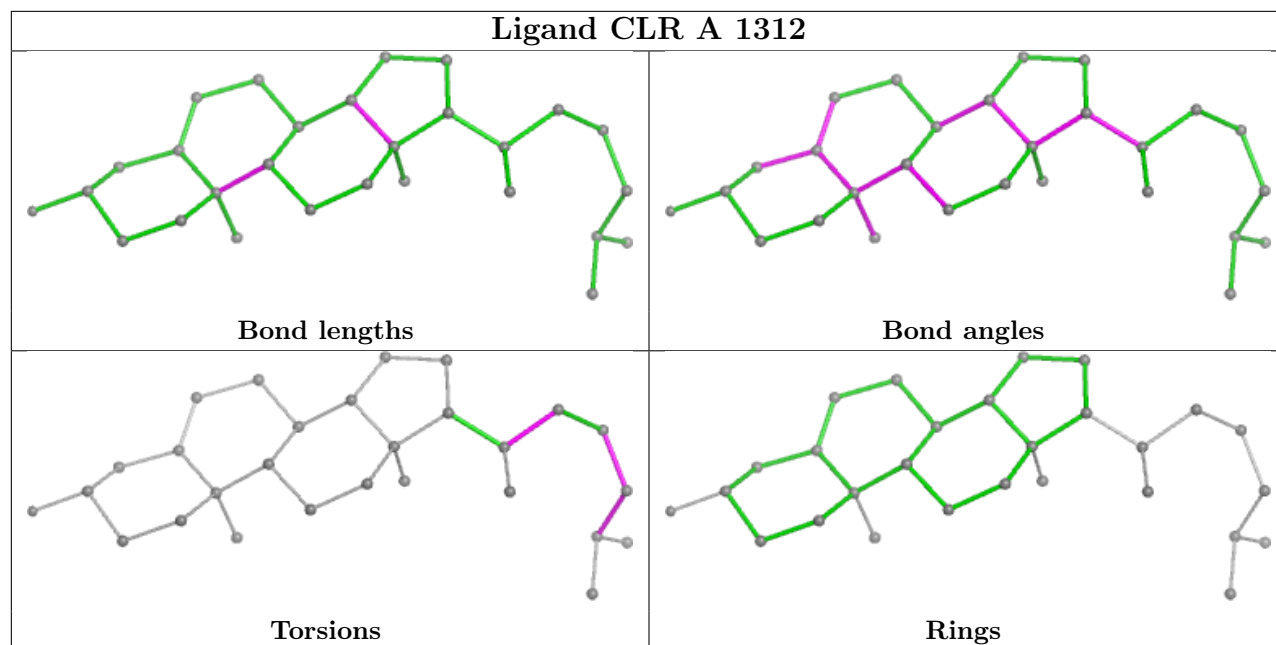


## Ligand R1H A 1301

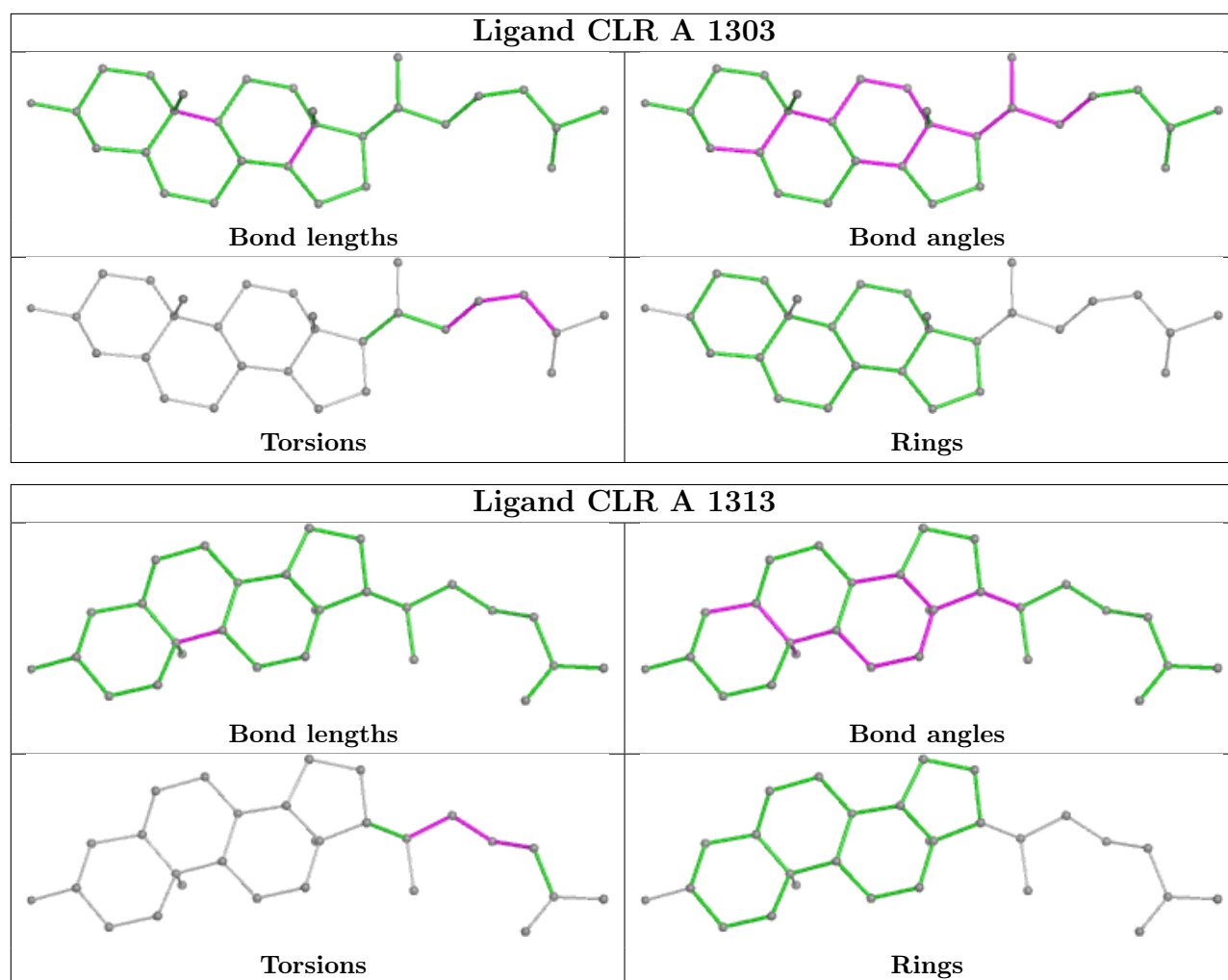


## Ligand CLR A 1306









## 5.7 Other polymers [i](#)

There are no such residues in this entry.

## 5.8 Polymer linkage issues [i](#)

There are no chain breaks in this entry.

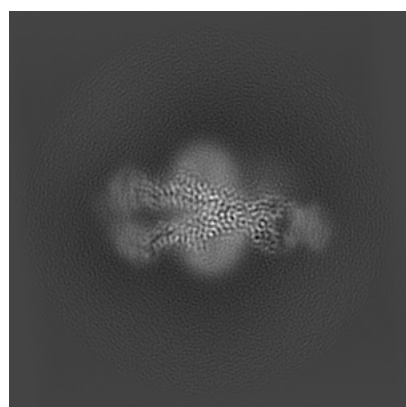
## 6 Map visualisation [i](#)

This section contains visualisations of the EMDB entry EMD-11671. These allow visual inspection of the internal detail of the map and identification of artifacts.

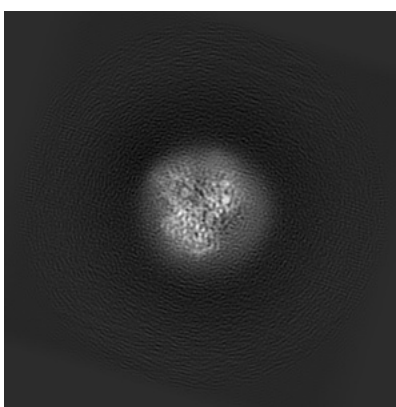
No raw map or half-maps were deposited for this entry and therefore no images, graphs, etc. pertaining to the raw map can be shown.

### 6.1 Orthogonal projections [i](#)

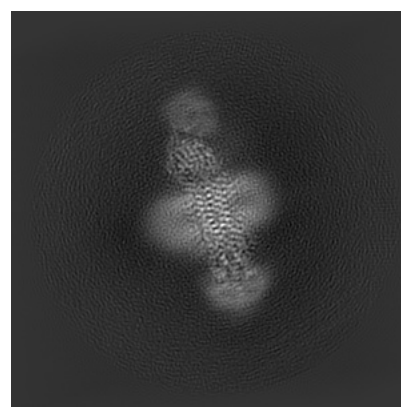
#### 6.1.1 Primary map



X



Y

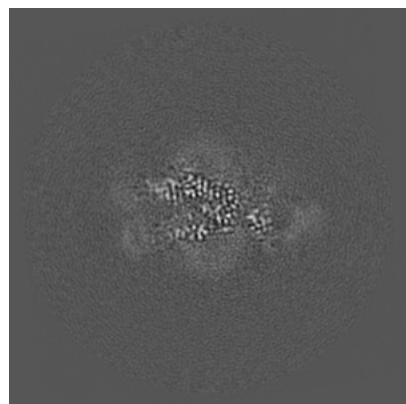


Z

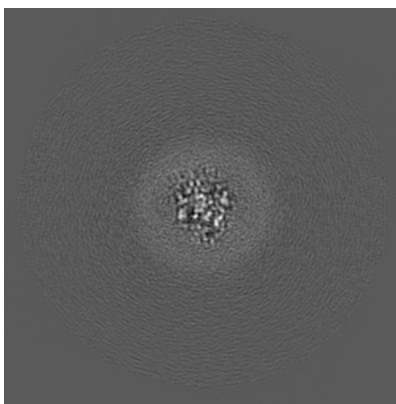
The images above show the map projected in three orthogonal directions.

### 6.2 Central slices [i](#)

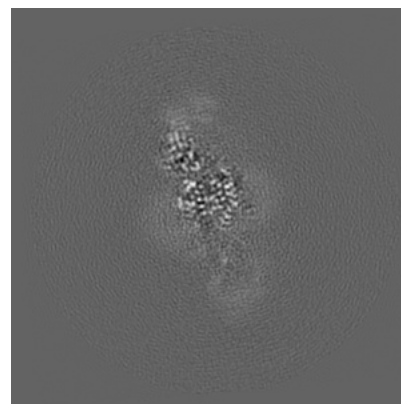
#### 6.2.1 Primary map



X Index: 192



Y Index: 192

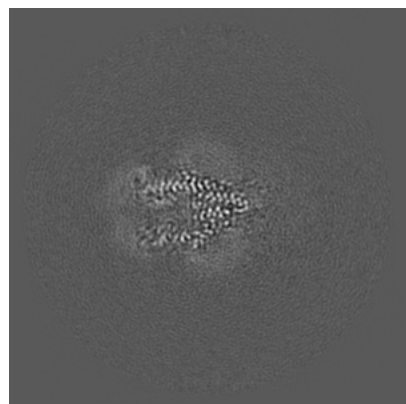


Z Index: 192

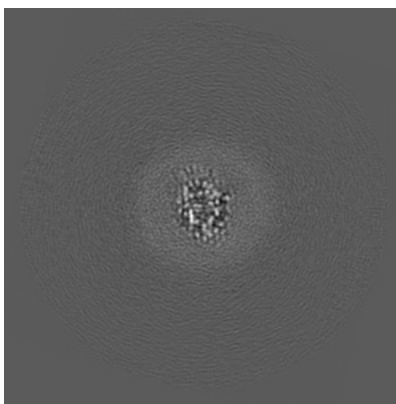
The images above show central slices of the map in three orthogonal directions.

## 6.3 Largest variance slices [i](#)

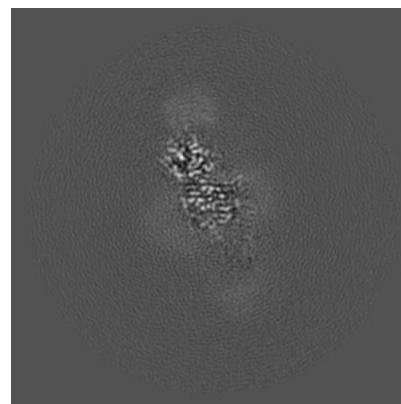
### 6.3.1 Primary map



X Index: 203



Y Index: 195

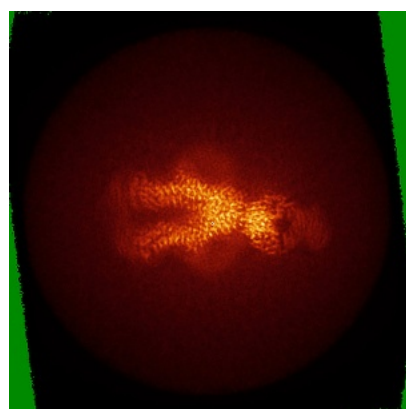


Z Index: 184

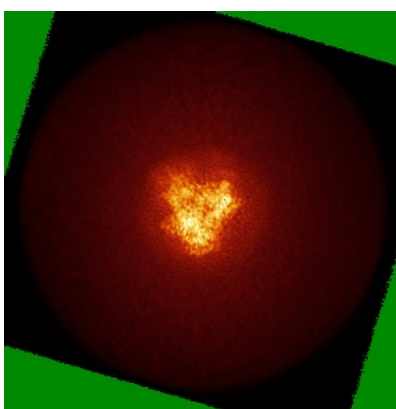
The images above show the largest variance slices of the map in three orthogonal directions.

## 6.4 Orthogonal standard-deviation projections (False-color) [i](#)

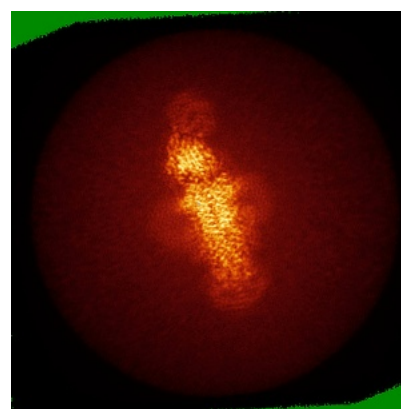
### 6.4.1 Primary map



X



Y

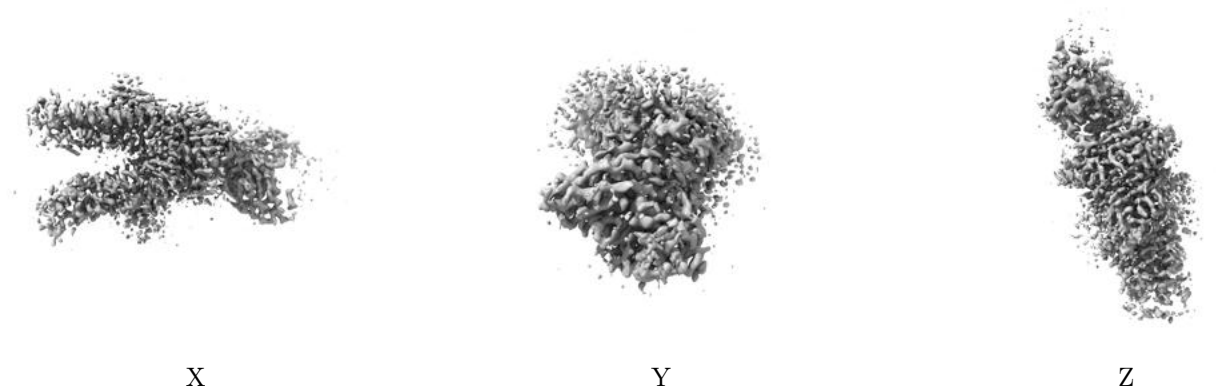


Z

The images above show the map standard deviation projections with false color in three orthogonal directions. Minimum values are shown in green, max in blue, and dark to light orange shades represent small to large values respectively.

## 6.5 Orthogonal surface views [i](#)

### 6.5.1 Primary map



The images above show the 3D surface view of the map at the recommended contour level 0.013. These images, in conjunction with the slice images, may facilitate assessment of whether an appropriate contour level has been provided.

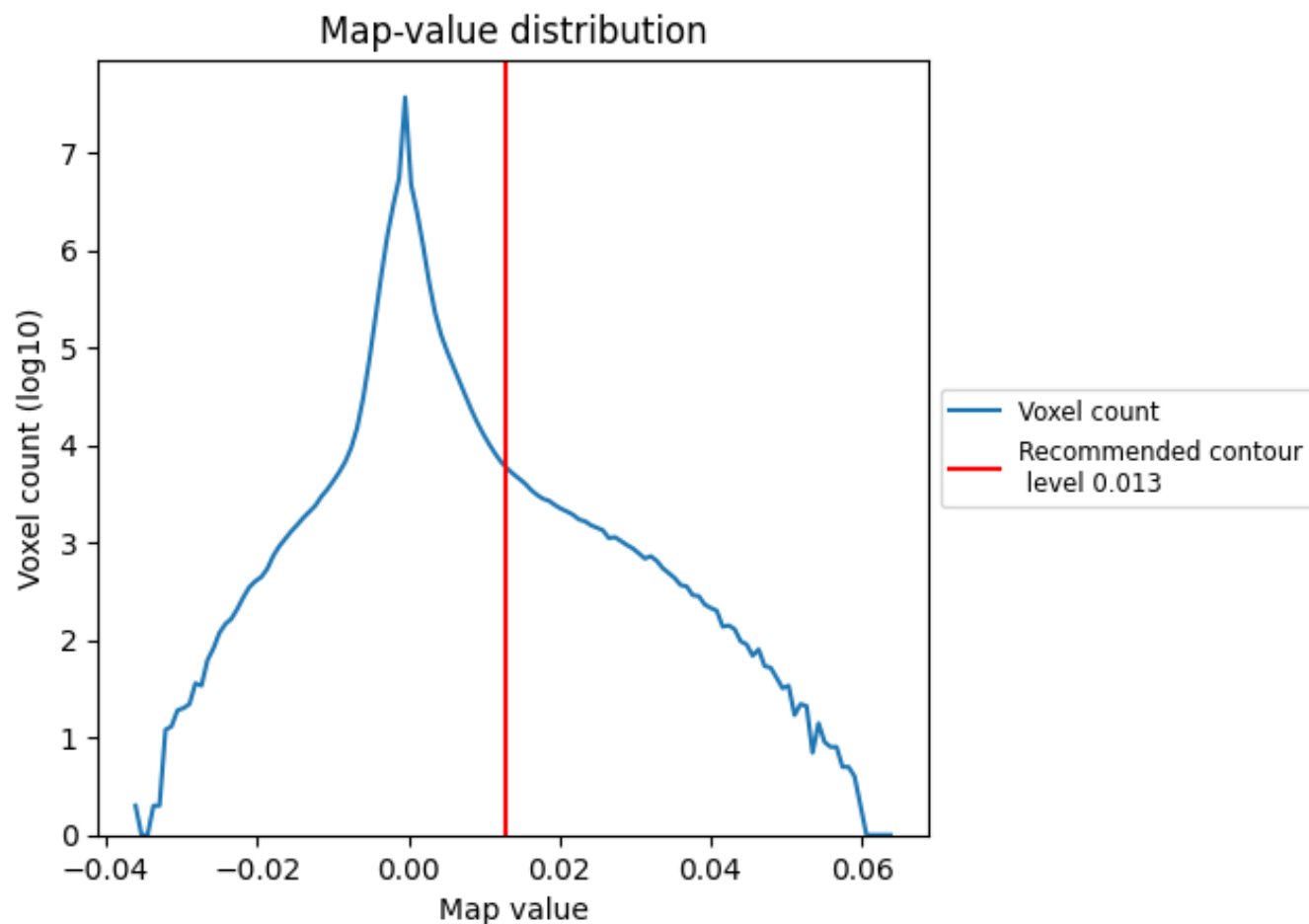
## 6.6 Mask visualisation [i](#)

This section was not generated. No masks/segmentation were deposited.

## 7 Map analysis [i](#)

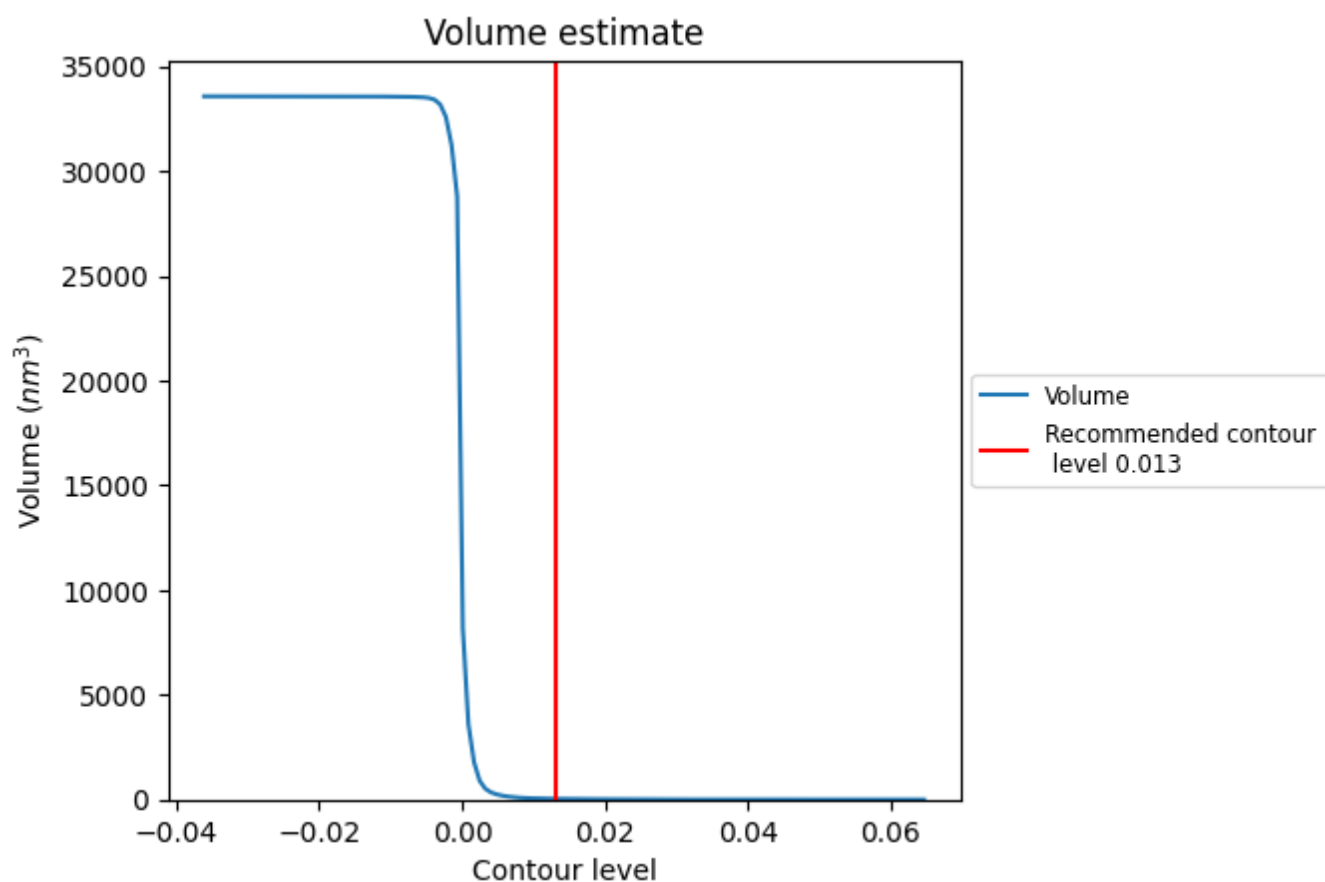
This section contains the results of statistical analysis of the map.

### 7.1 Map-value distribution [i](#)



The map-value distribution is plotted in 128 intervals along the x-axis. The y-axis is logarithmic. A spike in this graph at zero usually indicates that the volume has been masked.

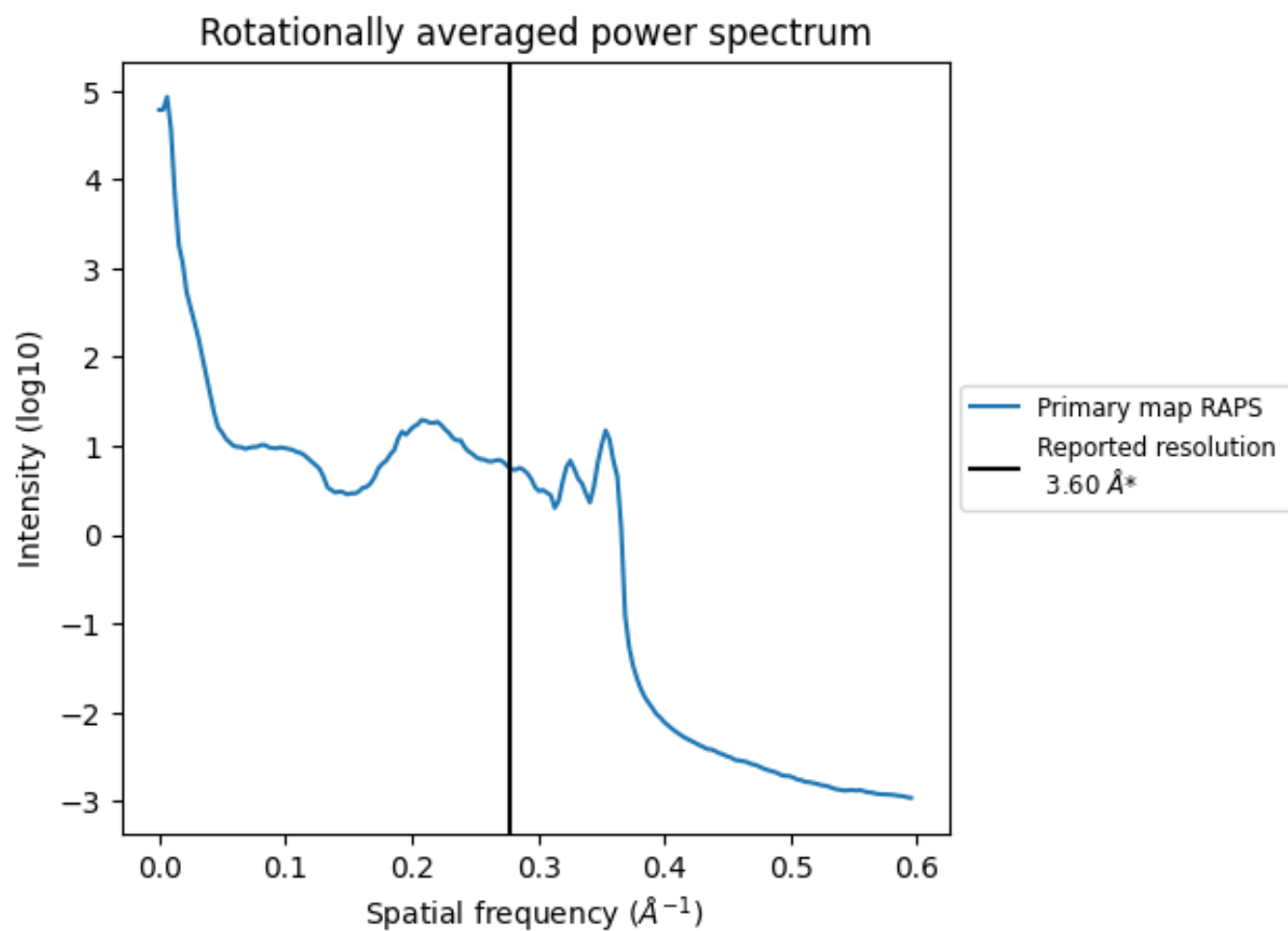
## 7.2 Volume estimate [i](#)



The volume at the recommended contour level is 36  $\text{nm}^3$ ; this corresponds to an approximate mass of 32 kDa.

The volume estimate graph shows how the enclosed volume varies with the contour level. The recommended contour level is shown as a vertical line and the intersection between the line and the curve gives the volume of the enclosed surface at the given level.

### 7.3 Rotationally averaged power spectrum ⓘ

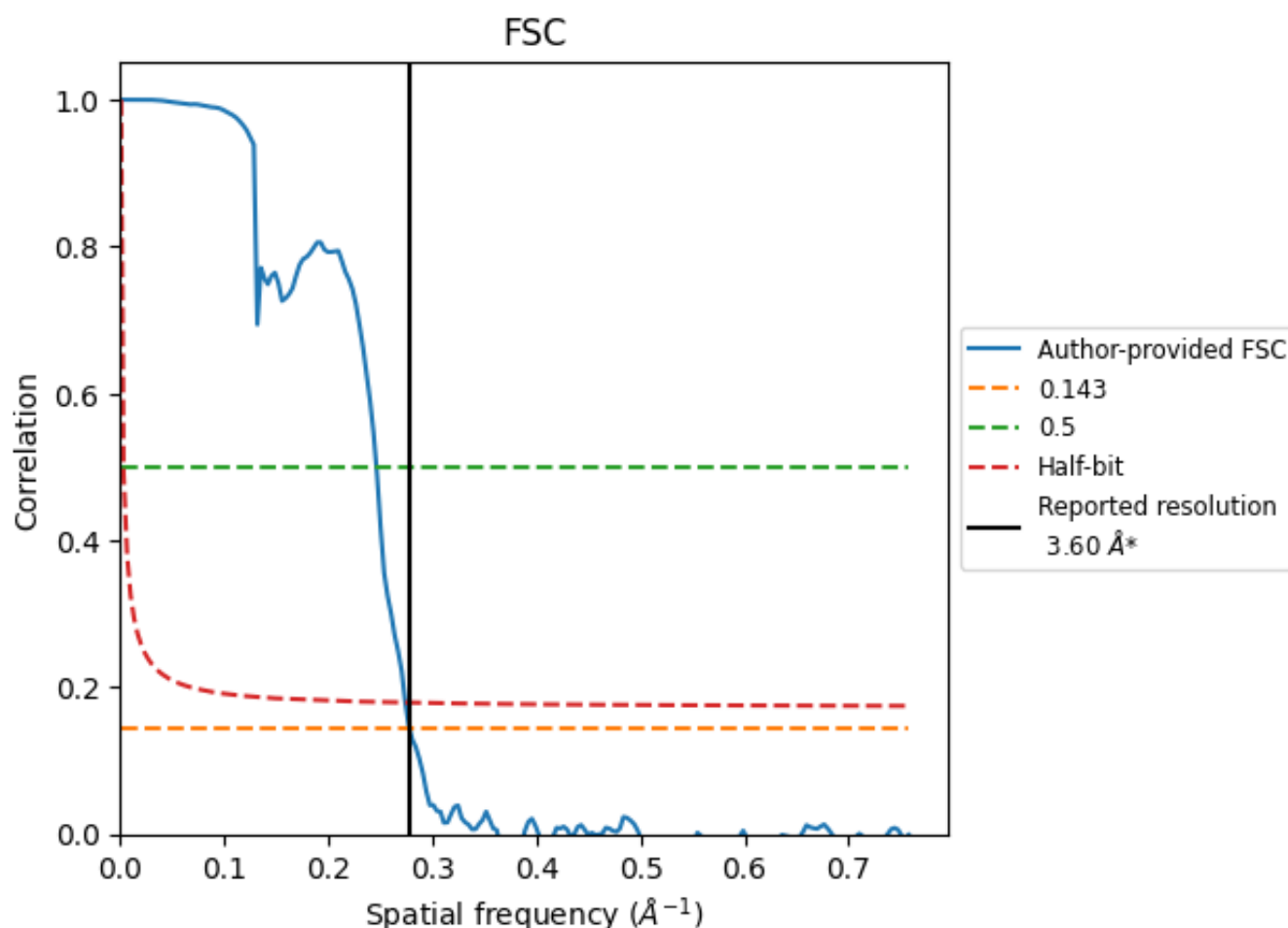


\*Reported resolution corresponds to spatial frequency of 0.278 Å<sup>-1</sup>

## 8 Fourier-Shell correlation [i](#)

Fourier-Shell Correlation (FSC) is the most commonly used method to estimate the resolution of single-particle and subtomogram-averaged maps. The shape of the curve depends on the imposed symmetry, mask and whether or not the two 3D reconstructions used were processed from a common reference. The reported resolution is shown as a black line. A curve is displayed for the half-bit criterion in addition to lines showing the 0.143 gold standard cut-off and 0.5 cut-off.

### 8.1 FSC [i](#)



\*Reported resolution corresponds to spatial frequency of 0.278  $\text{\AA}^{-1}$



## 8.2 Resolution estimates [i](#)

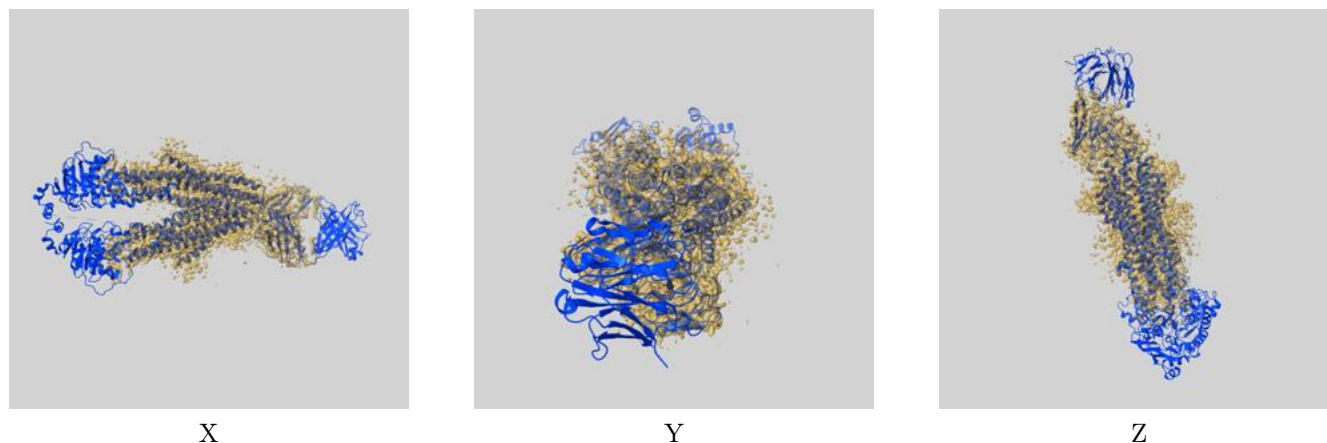
Resolution estimate (Å)	Estimation criterion (FSC cut-off)		
	0.143	0.5	Half-bit
Reported by author	3.60	-	-
Author-provided FSC curve	3.60	4.06	3.65
Unmasked-calculated*	-	-	-

\*Resolution estimate based on FSC curve calculated by comparison of deposited half-maps.

## 9 Map-model fit [i](#)

This section contains information regarding the fit between EMDB map EMD-11671 and PDB model 7A6E. Per-residue inclusion information can be found in section [3](#) on page [6](#).

### 9.1 Map-model overlay [i](#)



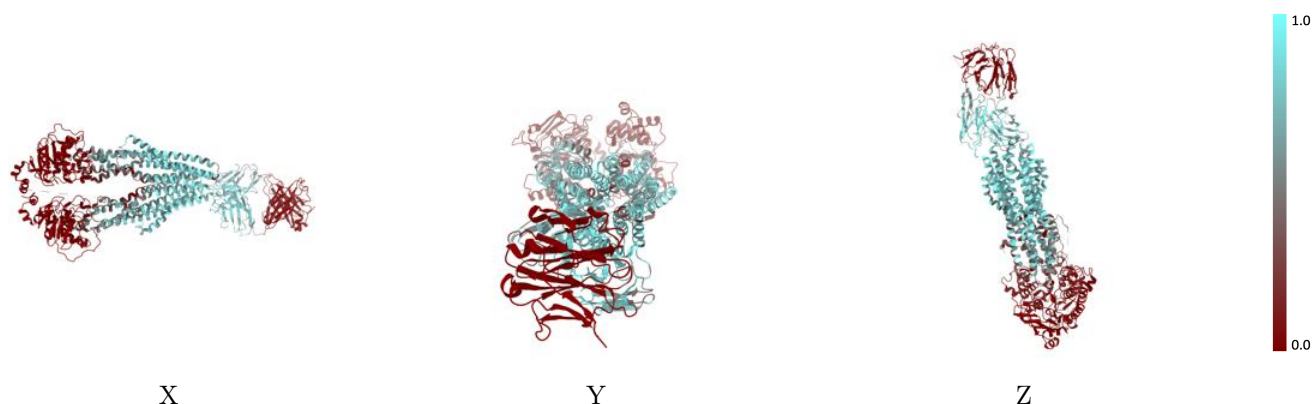
The images above show the 3D surface view of the map at the recommended contour level 0.013 at 50% transparency in yellow overlaid with a ribbon representation of the model coloured in blue. These images allow for the visual assessment of the quality of fit between the atomic model and the map.

## 9.2 Q-score mapped to coordinate model [i](#)



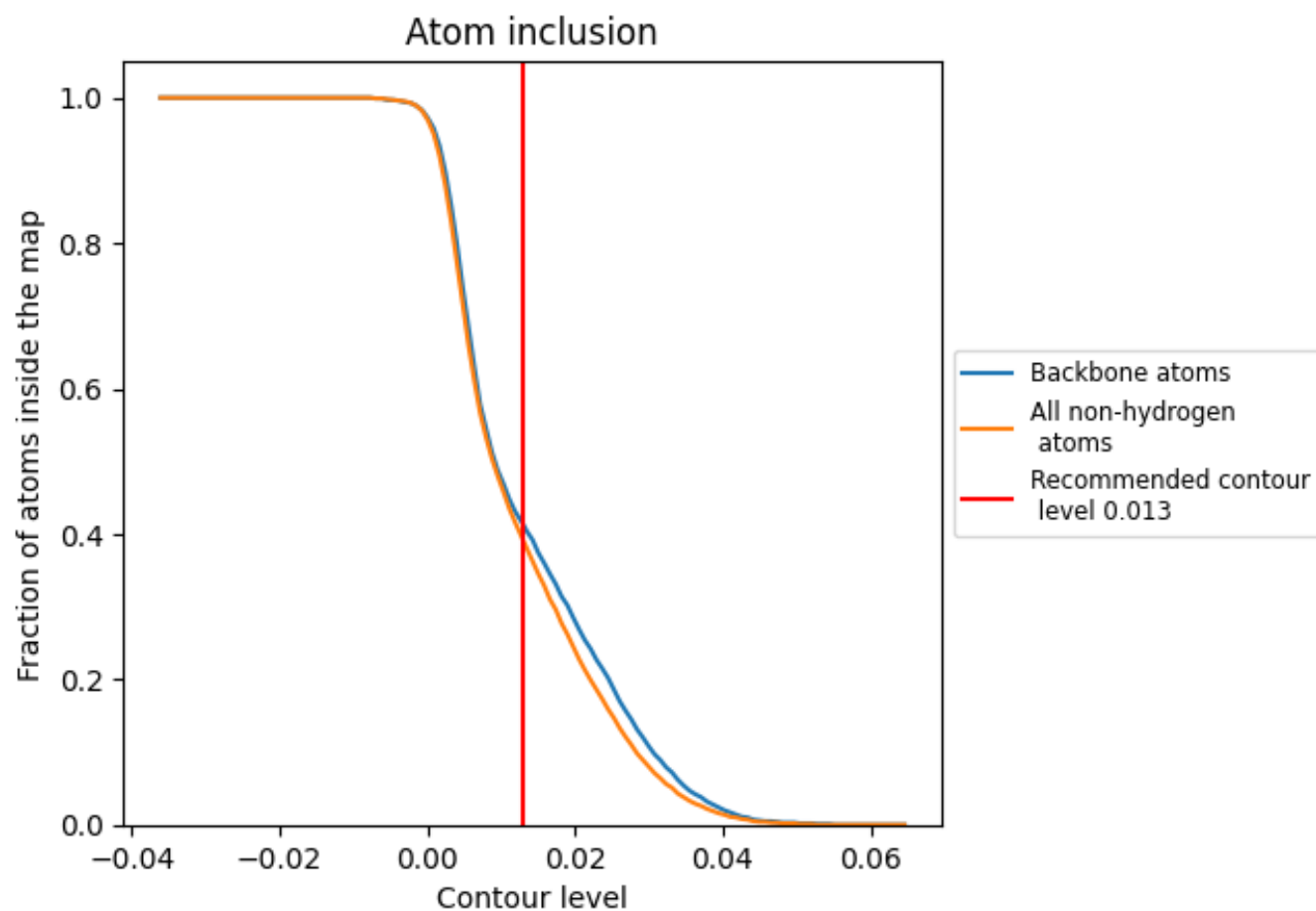
The images above show the model with each residue coloured according to its Q-score. This shows their resolvability in the map with higher Q-score values reflecting better resolvability. Please note: Q-score is calculating the resolvability of atoms, and thus high values are only expected at resolutions at which atoms can be resolved. Low Q-score values may therefore be expected for many entries.

## 9.3 Atom inclusion mapped to coordinate model [i](#)



The images above show the model with each residue coloured according to its atom inclusion. This shows to what extent they are inside the map at the recommended contour level (0.013).

## 9.4 Atom inclusion [i](#)



At the recommended contour level, 41% of all backbone atoms, 39% of all non-hydrogen atoms, are inside the map.

9.5 Map-model fit summary ⓘ

The table lists the average atom inclusion at the recommended contour level (0.013) and Q-score for the entire model and for each chain.

Chain	Atom inclusion	Q-score
All	<div></div> 0.3910	<div></div> 0.3350
A	<div></div> 0.3870	<div></div> 0.3320
B	<div></div> 0.3780	<div></div> 0.3470
C	<div></div> 0.4230	<div></div> 0.3460

