



wwPDB EM Validation Summary Report ⓘ

Oct 6, 2024 – 04:34 pm BST

PDB ID : 7AP9
EMDB ID : EMD-11851
Title : Atomic structure of the poxvirus initially transcribing complex in conformation 3
Authors : Grimm, C.; Bartuli, J.; Fischer, U.
Deposited on : 2020-10-16
Resolution : 3.01 Å(reported)

This is a wwPDB EM Validation Summary Report for a publicly released PDB entry.

We welcome your comments at validation@mail.wwpdb.org

A user guide is available at

<https://www.wwpdb.org/validation/2017/EMValidationReportHelp>
with specific help available everywhere you see the ⓘ symbol.

The types of validation reports are described at

<http://www.wwpdb.org/validation/2017/FAQs#types>.

The following versions of software and data (see [references ⓘ](#)) were used in the production of this report:

EMDB validation analysis : 0.0.1.dev113
MolProbity : 4.02b-467
Percentile statistics : 20231227.v01 (using entries in the PDB archive December 27th 2023)
MapQ : 1.9.13
Ideal geometry (proteins) : Engh & Huber (2001)
Ideal geometry (DNA, RNA) : Parkinson et al. (1996)
Validation Pipeline (wwPDB-VP) : 2.39

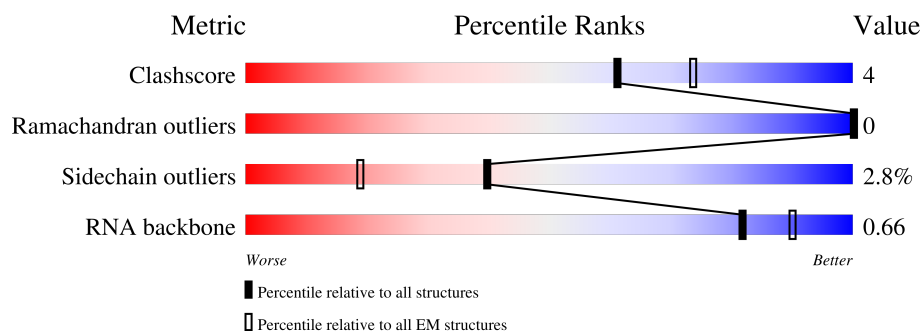
1 Overall quality at a glance

The following experimental techniques were used to determine the structure:

ELECTRON MICROSCOPY

The reported resolution of this entry is 3.01 Å.

Percentile scores (ranging between 0-100) for global validation metrics of the entry are shown in the following graphic. The table shows the number of entries on which the scores are based.



Metric	Whole archive (#Entries)	EM structures (#Entries)
Clashscore	210492	15764
Ramachandran outliers	207382	16835
Sidechain outliers	206894	16415
RNA backbone	6643	2191

The table below summarises the geometric issues observed across the polymeric chains and their fit to the map. The red, orange, yellow and green segments of the bar indicate the fraction of residues that contain outliers for ≥ 3 , 2, 1 and 0 types of geometric quality criteria respectively. A grey segment represents the fraction of residues that are not modelled. The numeric value for each fraction is indicated below the corresponding segment, with a dot representing fractions $\leq 5\%$. The upper red bar (where present) indicates the fraction of residues that have poor fit to the EM map (all-atom inclusion $< 40\%$). The numeric value is given above the bar.

Mol	Chain	Length	Quality of chain
1	A	1286	
2	B	1164	
3	C	305	
4	E	185	
5	F	164	
6	G	161	
7	I	795	

Continued on next page...

Continued from previous page...

Mol	Chain	Length	Quality of chain
8	J	63	<div><div></div><div>78%</div><div>17%</div><div></div></div>
9	P	5	<div><div></div><div>80%</div><div>20%</div><div></div></div>
10	S	259	<div><div></div><div>36%</div><div>9%</div><div>55%</div><div></div></div>
11	T	60	<div><div></div><div>10%</div><div>90%</div><div></div></div>

2 Entry composition

There are 13 unique types of molecules in this entry. The entry contains 30881 atoms, of which 0 are hydrogens and 0 are deuteriums.

In the tables below, the AltConf column contains the number of residues with at least one atom in alternate conformation and the Trace column contains the number of residues modelled with at most 2 atoms.

- Molecule 1 is a protein called DNA-directed RNA polymerase 147 kDa polypeptide.

Mol	Chain	Residues	Atoms					AltConf	Trace
1	A	1268	Total	C	N	O	S	0	0
			10188	6556	1679	1908	45		

- Molecule 2 is a protein called DNA-directed RNA polymerase.

Mol	Chain	Residues	Atoms					AltConf	Trace
2	B	1129	Total	C	N	O	S	0	0
			9091	5794	1554	1695	48		

There is a discrepancy between the modelled and reference sequences:

Chain	Residue	Modelled	Actual	Comment	Reference
B	6	ASN	ASP	conflict	UNP Q49PH2

- Molecule 3 is a protein called DNA-directed RNA polymerase 35 kDa subunit.

Mol	Chain	Residues	Atoms					AltConf	Trace
3	C	304	Total	C	N	O	S	0	0
			2484	1608	399	464	13		

- Molecule 4 is a protein called DNA-directed RNA polymerase subunit.

Mol	Chain	Residues	Atoms					AltConf	Trace
4	E	184	Total	C	N	O	S	0	0
			1495	966	248	276	5		

- Molecule 5 is a protein called DNA-directed RNA polymerase 19 kDa subunit.

Mol	Chain	Residues	Atoms					AltConf	Trace
5	F	103	Total	C	N	O	S	0	0
			849	545	148	153	3		

- Molecule 6 is a protein called DNA-directed RNA polymerase 18 kDa subunit.

Mol	Chain	Residues	Atoms					AltConf	Trace
6	G	153	Total	C	N	O	S	0	0
			1192	753	198	235	6		

- Molecule 7 is a protein called Protein H4.

Mol	Chain	Residues	Atoms					AltConf	Trace
7	I	464	Total	C	N	O	S	0	0
			3903	2552	627	710	14		

- Molecule 8 is a protein called DNA-directed RNA polymerase 7 kDa subunit.

Mol	Chain	Residues	Atoms					AltConf	Trace
8	J	61	Total	C	N	O	S	0	0
			490	310	88	88	4		

- Molecule 9 is a RNA chain called RNA (5'-R(P*AP*UP*AP*AP*A)-3').

Mol	Chain	Residues	Atoms					AltConf	Trace
9	P	5	Total	C	N	O	P	0	0
			108	49	22	32	5		

- Molecule 10 is a protein called DNA-directed RNA polymerase 30 kDa polypeptide.

Mol	Chain	Residues	Atoms					AltConf	Trace
10	S	116	Total	C	N	O	S	0	0
			952	608	154	186	4		

- Molecule 11 is a DNA chain called Synthetic promoter DNA oligomer, template strand.

Mol	Chain	Residues	Atoms					AltConf	Trace
11	T	6	Total	C	N	O	P	0	0
			124	60	21	37	6		

- Molecule 12 is MAGNESIUM ION (three-letter code: MG) (formula: Mg).

Mol	Chain	Residues	Atoms		AltConf
12	A	1	Total	Mg	0
			1	1	

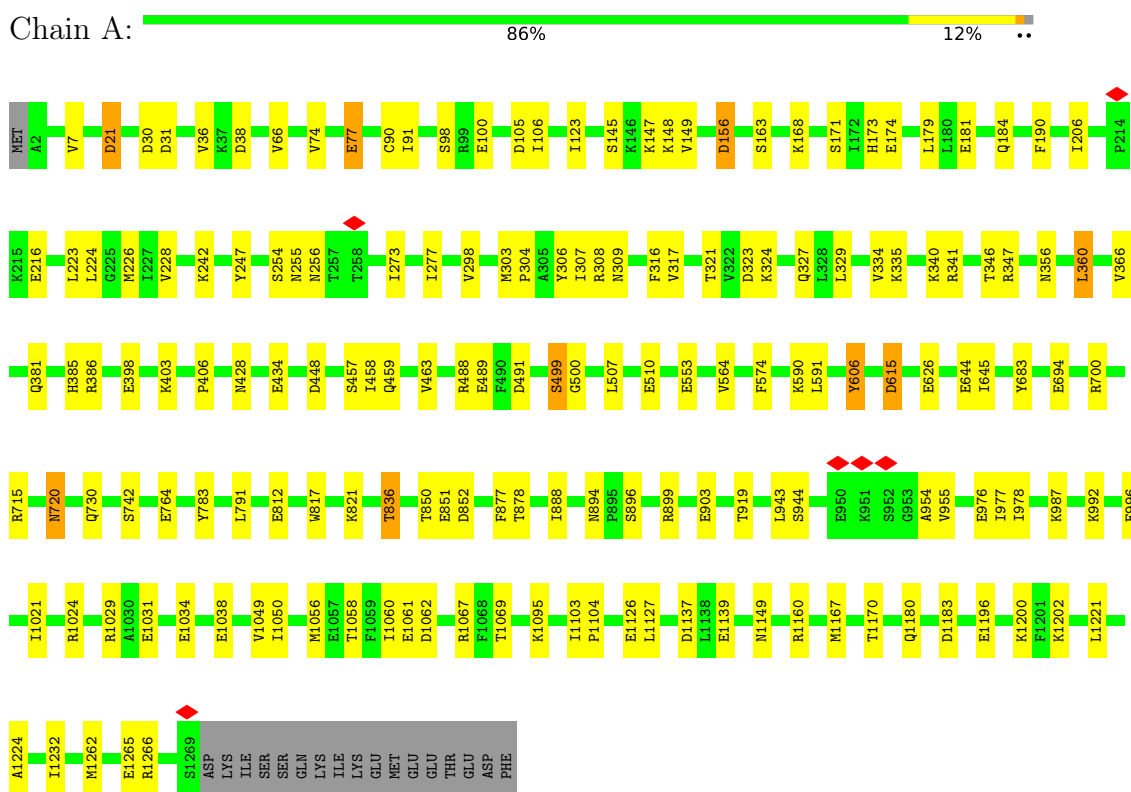
- Molecule 13 is ZINC ION (three-letter code: ZN) (formula: Zn).

Mol	Chain	Residues	Atoms		AltConf
13	A	2	Total 2	Zn 2	0
13	B	1	Total 1	Zn 1	0
13	I	1	Total 1	Zn 1	0

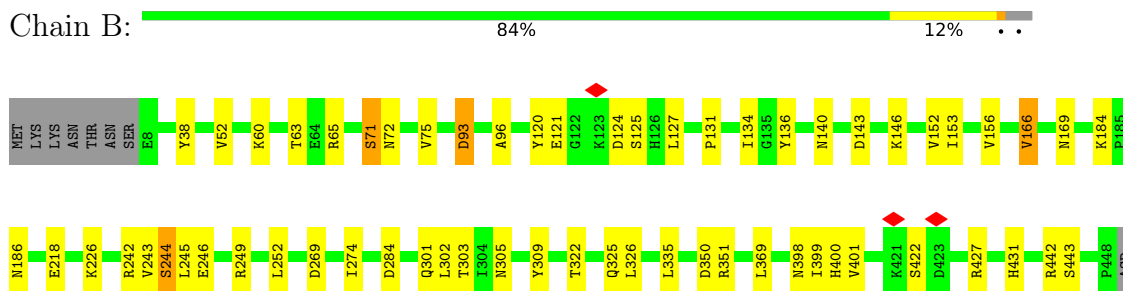
3 Residue-property plots

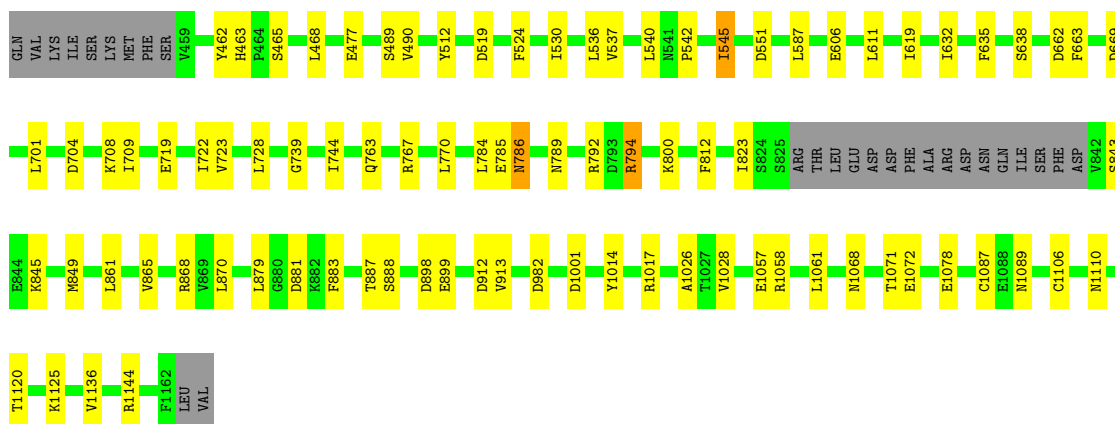
These plots are drawn for all protein, RNA, DNA and oligosaccharide chains in the entry. The first graphic for a chain summarises the proportions of the various outlier classes displayed in the second graphic. The second graphic shows the sequence view annotated by issues in geometry and atom inclusion in map density. Residues are color-coded according to the number of geometric quality criteria for which they contain at least one outlier: green = 0, yellow = 1, orange = 2 and red = 3 or more. A red diamond above a residue indicates a poor fit to the EM map for this residue (all-atom inclusion < 40%). Stretches of 2 or more consecutive residues without any outlier are shown as a green connector. Residues present in the sample, but not in the model, are shown in grey.

- Molecule 1: DNA-directed RNA polymerase 147 kDa polypeptide



- Molecule 2: DNA-directed RNA polymerase

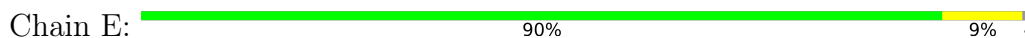




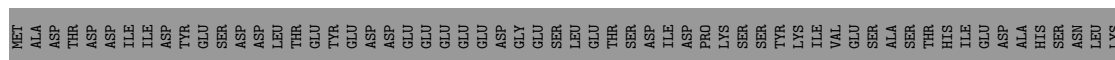
- Molecule 3: DNA-directed RNA polymerase 35 kDa subunit



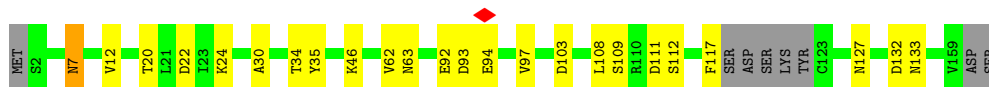
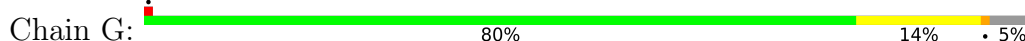
- Molecule 4: DNA-directed RNA polymerase subunit



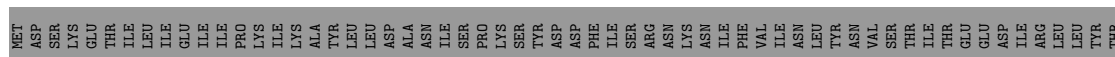
- Molecule 5: DNA-directed RNA polymerase 19 kDa subunit



- Molecule 6: DNA-directed RNA polymerase 18 kDa subunit



- Molecule 7: Protein H4



ASP
CYS
LYS
GLN
HIS
PHE
LYS
PRO
PRO
LYS
PHE
ARG
ALA
PHE
ARG
ASN
LEU
ASN
VAL
THR
THR
GLN
SER
ILE
HIS
GLU
ASN
LYS
GLU
ILE
THR
GLU
ILE
LEU
PRO
ASP
ASN
ASN
PRO
SER
PRO
PRO
GLU
SER
PRO
GLU
PRO
ALA
SER
PRO
ILE
ASP
GLY
LEU
ILE
ARG
ALA
THR
PHE

ASP
ARG
ASN
ASP
GLU
PRO
PRO
GLU
ASP
ASP
GLU

- Molecule 11: Synthetic promoter DNA oligomer, template strand

Chain T: 10% 90%

DC
DC
DC
DC
DA
DC
DT
DC
DC
DC
DT
DT
DA
DT
DC
DC
DA
DT
T20
G25
DA
DA
DT
DT
DT
DA
DC
DA
DA
DA
DT
DA
DC
DT
DT
DT
DT
DT
DC
DC
DA
DT
DT
DT
DT
DA
DA
DC
DC
DT
DA
DA
DC
DC

4 Experimental information

Property	Value	Source
EM reconstruction method	SINGLE PARTICLE	Depositor
Imposed symmetry	POINT, Not provided	
Number of particles used	96165	Depositor
Resolution determination method	FSC 0.143 CUT-OFF	Depositor
CTF correction method	PHASE FLIPPING AND AMPLITUDE CORRECTION	Depositor
Microscope	FEI TITAN KRIOS	Depositor
Voltage (kV)	300	Depositor
Electron dose ($e^-/\text{\AA}^2$)	78.90	Depositor
Minimum defocus (nm)	Not provided	
Maximum defocus (nm)	Not provided	
Magnification	Not provided	
Image detector	FEI FALCON III (4k x 4k)	Depositor
Maximum map value	0.119	Depositor
Minimum map value	-0.038	Depositor
Average map value	0.000	Depositor
Map value standard deviation	0.004	Depositor
Recommended contour level	0.018	Depositor
Map size (Å)	340.32, 340.32, 340.32	wwPDB
Map dimensions	320, 320, 320	wwPDB
Map angles (°)	90.0, 90.0, 90.0	wwPDB
Pixel spacing (Å)	1.0635, 1.0635, 1.0635	Depositor

5 Model quality

5.1 Standard geometry

Bond lengths and bond angles in the following residue types are not validated in this section: MG, ZN

The Z score for a bond length (or angle) is the number of standard deviations the observed value is removed from the expected value. A bond length (or angle) with $|Z| > 5$ is considered an outlier worth inspection. RMSZ is the root-mean-square of all Z scores of the bond lengths (or angles).

Mol	Chain	Bond lengths		Bond angles	
		RMSZ	$\# Z > 5$	RMSZ	$\# Z > 5$
1	A	0.47	0/10394	0.50	0/14052
2	B	0.48	0/9281	0.50	0/12537
3	C	0.48	0/2540	0.50	0/3440
4	E	0.46	0/1522	0.51	0/2069
5	F	0.48	0/863	0.48	0/1158
6	G	0.40	0/1209	0.51	0/1639
7	I	0.37	0/4000	0.48	0/5411
8	J	0.46	0/494	0.52	0/663
9	P	0.39	0/121	0.71	0/186
10	S	0.34	0/967	0.50	0/1294
11	T	0.59	0/138	1.06	0/211
All	All	0.46	0/31529	0.50	0/42660

Chiral center outliers are detected by calculating the chiral volume of a chiral center and verifying if the center is modelled as a planar moiety or with the opposite hand. A planarity outlier is detected by checking planarity of atoms in a peptide group, atoms in a mainchain group or atoms of a sidechain that are expected to be planar.

Mol	Chain	#Chirality outliers	#Planarity outliers
7	I	0	1

There are no bond length outliers.

There are no bond angle outliers.

There are no chirality outliers.

All (1) planarity outliers are listed below:

Mol	Chain	Res	Type	Group
7	I	660	VAL	Peptide

5.2 Too-close contacts ⓘ

In the following table, the Non-H and H(model) columns list the number of non-hydrogen atoms and hydrogen atoms in the chain respectively. The H(added) column lists the number of hydrogen atoms added and optimized by MolProbity. The Clashes column lists the number of clashes within the asymmetric unit, whereas Symm-Clashes lists symmetry-related clashes.

Mol	Chain	Non-H	H(model)	H(added)	Clashes	Symm-Clashes
1	A	10188	0	10312	102	0
2	B	9091	0	9146	86	0
3	C	2484	0	2470	13	0
4	E	1495	0	1548	9	0
5	F	849	0	874	5	0
6	G	1192	0	1181	13	0
7	I	3903	0	3905	47	0
8	J	490	0	530	6	0
9	P	108	0	55	1	0
10	S	952	0	957	16	0
11	T	124	0	70	0	0
12	A	1	0	0	0	0
13	A	2	0	0	0	0
13	B	1	0	0	0	0
13	I	1	0	0	0	0
All	All	30881	0	31048	260	0

The all-atom clashscore is defined as the number of clashes found per 1000 atoms (including hydrogen atoms). The all-atom clashscore for this structure is 4.

The worst 5 of 260 close contacts within the same asymmetric unit are listed below, sorted by their clash magnitude.

Atom-1	Atom-2	Interatomic distance (Å)	Clash overlap (Å)
7:I:735:ASN:ND2	7:I:747:VAL:O	2.16	0.79
2:B:477:GLU:N	2:B:477:GLU:OE1	2.17	0.78
7:I:627:LYS:NZ	7:I:628:ILE:O	2.18	0.77
2:B:303:THR:OG1	2:B:305:ASN:O	2.02	0.74
2:B:704:ASP:OD1	8:J:53:ASN:ND2	2.20	0.74

There are no symmetry-related clashes.

5.3 Torsion angles

5.3.1 Protein backbone

In the following table, the Percentiles column shows the percent Ramachandran outliers of the chain as a percentile score with respect to all PDB entries followed by that with respect to all EM entries.

The Analysed column shows the number of residues for which the backbone conformation was analysed, and the total number of residues.

Mol	Chain	Analysed	Favoured	Allowed	Outliers	Percentiles	
1	A	1266/1286 (98%)	1189 (94%)	77 (6%)	0	100	100
2	B	1123/1164 (96%)	1047 (93%)	76 (7%)	0	100	100
3	C	302/305 (99%)	279 (92%)	23 (8%)	0	100	100
4	E	182/185 (98%)	169 (93%)	13 (7%)	0	100	100
5	F	101/164 (62%)	96 (95%)	5 (5%)	0	100	100
6	G	149/161 (92%)	138 (93%)	11 (7%)	0	100	100
7	I	456/795 (57%)	422 (92%)	34 (8%)	0	100	100
8	J	59/63 (94%)	55 (93%)	4 (7%)	0	100	100
10	S	114/259 (44%)	97 (85%)	17 (15%)	0	100	100
All	All	3752/4382 (86%)	3492 (93%)	260 (7%)	0	100	100

There are no Ramachandran outliers to report.

5.3.2 Protein sidechains

In the following table, the Percentiles column shows the percent sidechain outliers of the chain as a percentile score with respect to all PDB entries followed by that with respect to all EM entries.

The Analysed column shows the number of residues for which the sidechain conformation was analysed, and the total number of residues.

Mol	Chain	Analysed	Rotameric	Outliers	Percentiles	
1	A	1139/1157 (98%)	1108 (97%)	31 (3%)	40	70
2	B	1030/1064 (97%)	1001 (97%)	29 (3%)	38	69
3	C	286/287 (100%)	281 (98%)	5 (2%)	56	80
4	E	174/175 (99%)	173 (99%)	1 (1%)	84	92
5	F	94/151 (62%)	93 (99%)	1 (1%)	70	87

Continued on next page...

Continued from previous page...

Mol	Chain	Analysed	Rotameric	Outliers	Percentiles	
6	G	136/144 (94%)	132 (97%)	4 (3%)	37	69
7	I	440/755 (58%)	422 (96%)	18 (4%)	26	58
8	J	60/62 (97%)	56 (93%)	4 (7%)	13	41
10	S	107/240 (45%)	103 (96%)	4 (4%)	29	62
All	All	3466/4035 (86%)	3369 (97%)	97 (3%)	40	69

5 of 97 residues with a non-rotameric sidechain are listed below:

Mol	Chain	Res	Type
2	B	1071	THR
7	I	135	ASP
2	B	1144	ARG
4	E	72	THR
7	I	184	PHE

Sometimes sidechains can be flipped to improve hydrogen bonding and reduce clashes. All (1) such sidechains are listed below:

Mol	Chain	Res	Type
1	A	1149	ASN

5.3.3 RNA ⓘ

Mol	Chain	Analysed	Backbone Outliers	Pucker Outliers
9	P	4/5 (80%)	0	0

There are no RNA backbone outliers to report.

There are no RNA pucker outliers to report.

5.4 Non-standard residues in protein, DNA, RNA chains ⓘ

There are no non-standard protein/DNA/RNA residues in this entry.

5.5 Carbohydrates ⓘ

There are no oligosaccharides in this entry.

5.6 Ligand geometry

Of 5 ligands modelled in this entry, 5 are monoatomic - leaving 0 for Mogul analysis.

There are no bond length outliers.

There are no bond angle outliers.

There are no chirality outliers.

There are no torsion outliers.

There are no ring outliers.

No monomer is involved in short contacts.

5.7 Other polymers

There are no such residues in this entry.

5.8 Polymer linkage issues

There are no chain breaks in this entry.

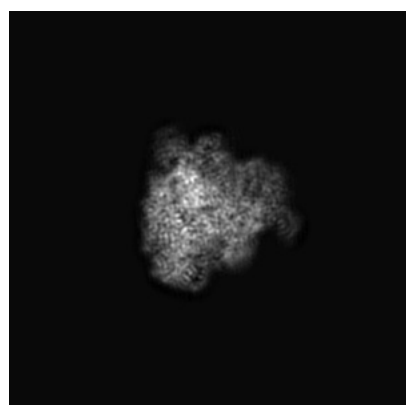
6 Map visualisation [i](#)

This section contains visualisations of the EMDB entry EMD-11851. These allow visual inspection of the internal detail of the map and identification of artifacts.

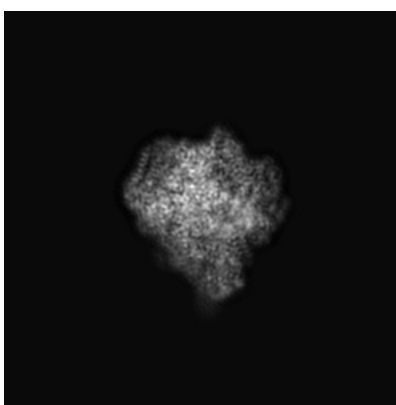
No raw map or half-maps were deposited for this entry and therefore no images, graphs, etc. pertaining to the raw map can be shown.

6.1 Orthogonal projections [i](#)

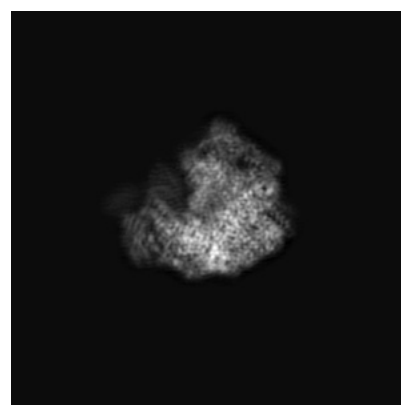
6.1.1 Primary map



X



Y

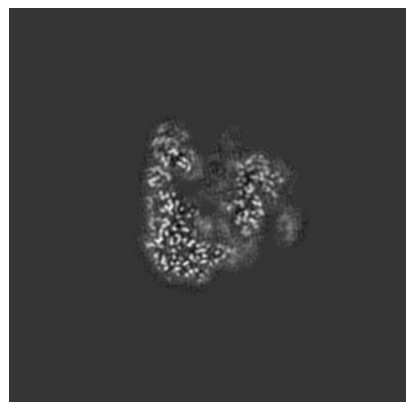


Z

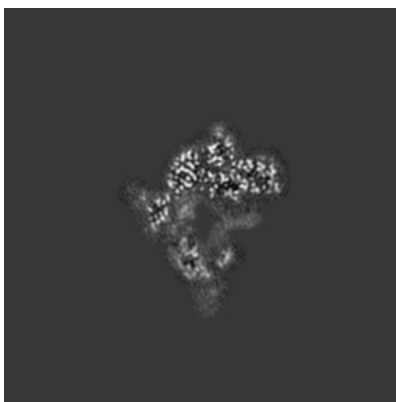
The images above show the map projected in three orthogonal directions.

6.2 Central slices [i](#)

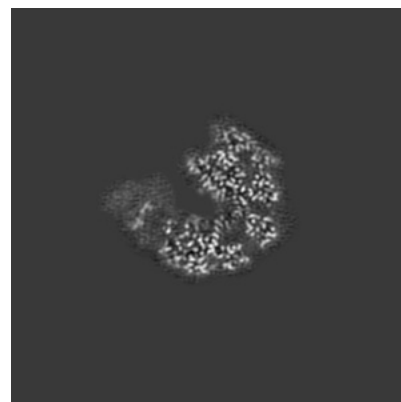
6.2.1 Primary map



X Index: 160



Y Index: 160

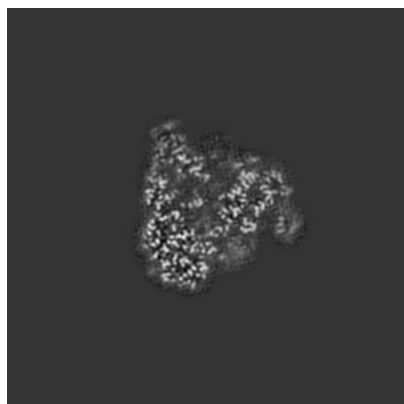


Z Index: 160

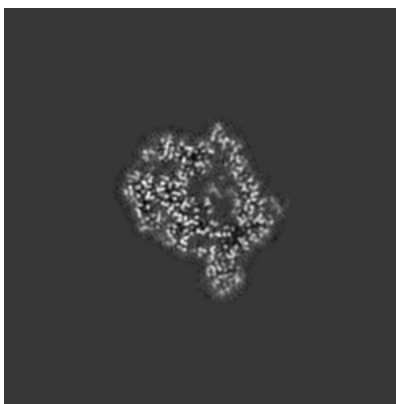
The images above show central slices of the map in three orthogonal directions.

6.3 Largest variance slices [i](#)

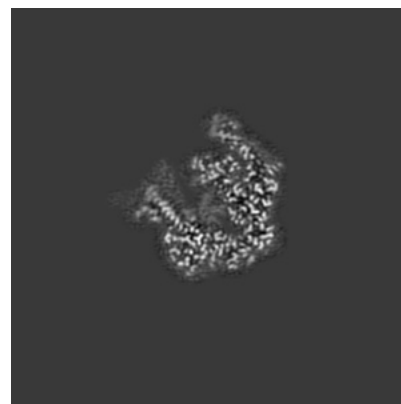
6.3.1 Primary map



X Index: 167



Y Index: 140

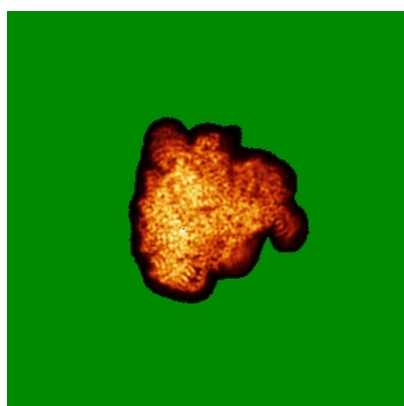


Z Index: 151

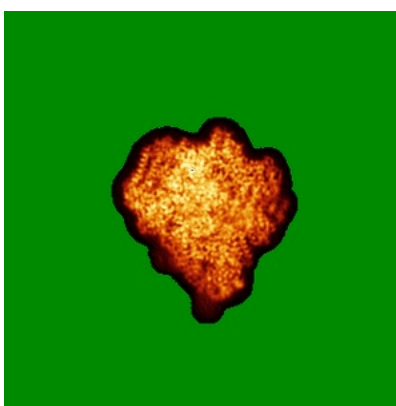
The images above show the largest variance slices of the map in three orthogonal directions.

6.4 Orthogonal standard-deviation projections (False-color) [i](#)

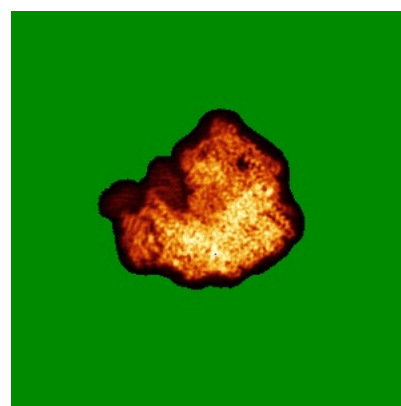
6.4.1 Primary map



X



Y

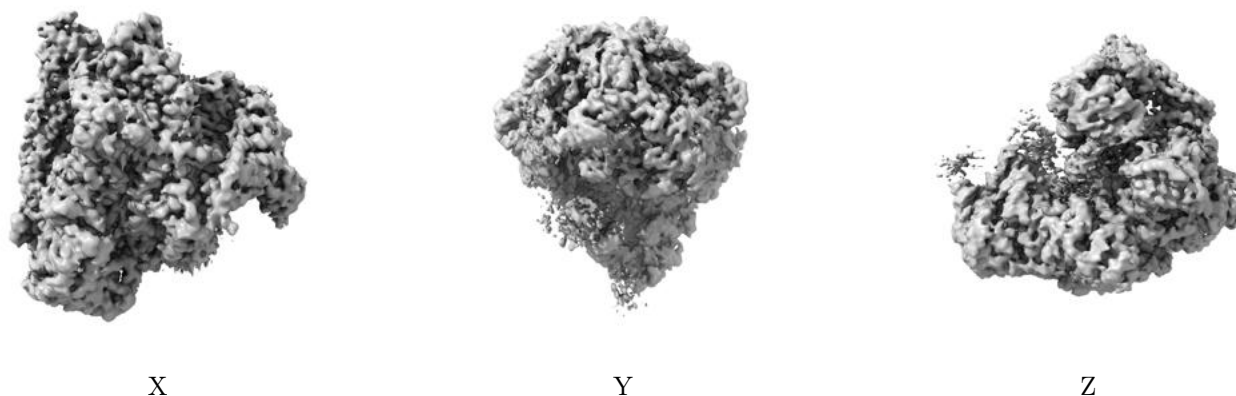


Z

The images above show the map standard deviation projections with false color in three orthogonal directions. Minimum values are shown in green, max in blue, and dark to light orange shades represent small to large values respectively.

6.5 Orthogonal surface views [i](#)

6.5.1 Primary map



The images above show the 3D surface view of the map at the recommended contour level 0.018. These images, in conjunction with the slice images, may facilitate assessment of whether an appropriate contour level has been provided.

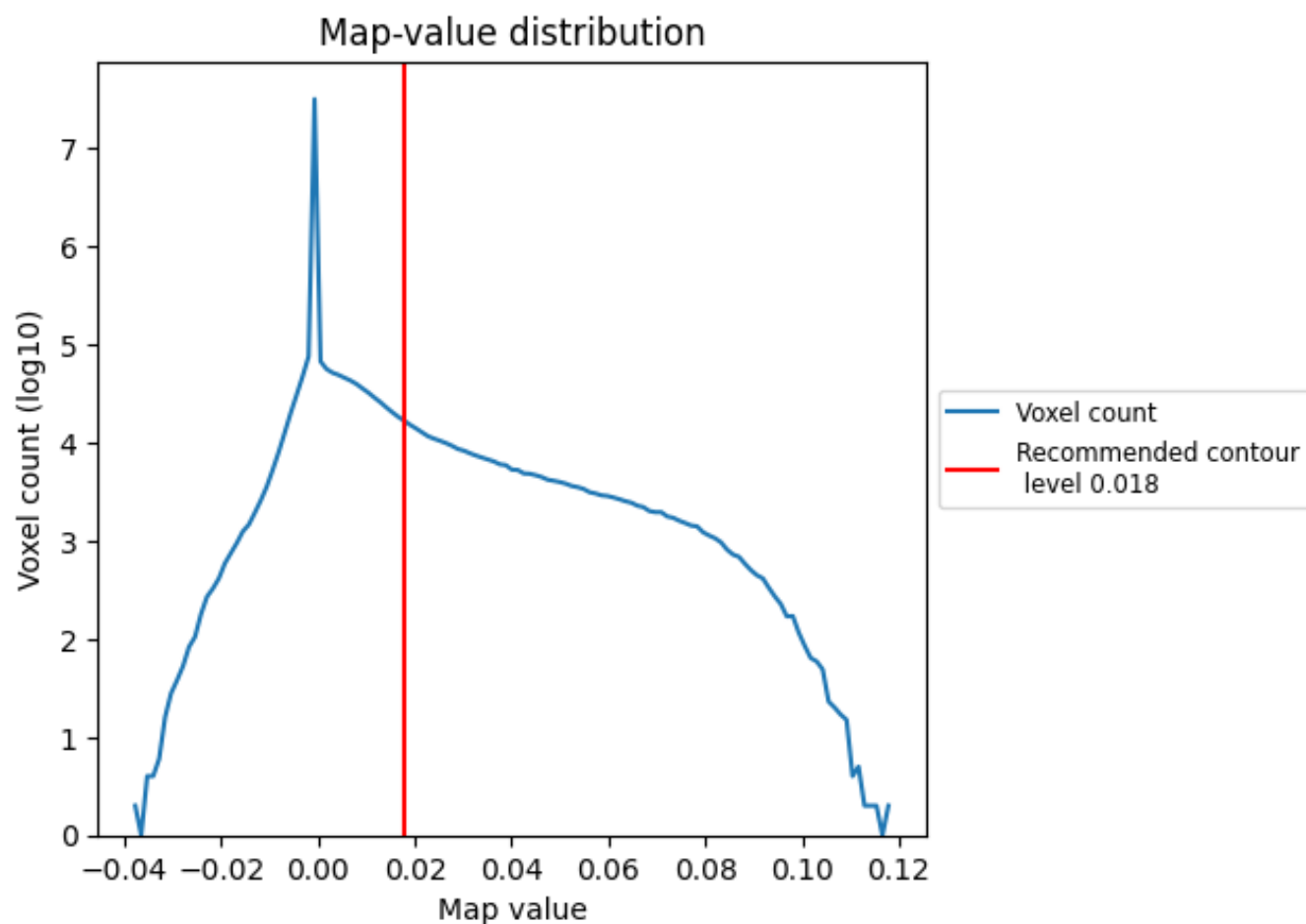
6.6 Mask visualisation [i](#)

This section was not generated. No masks/segmentation were deposited.

7 Map analysis [i](#)

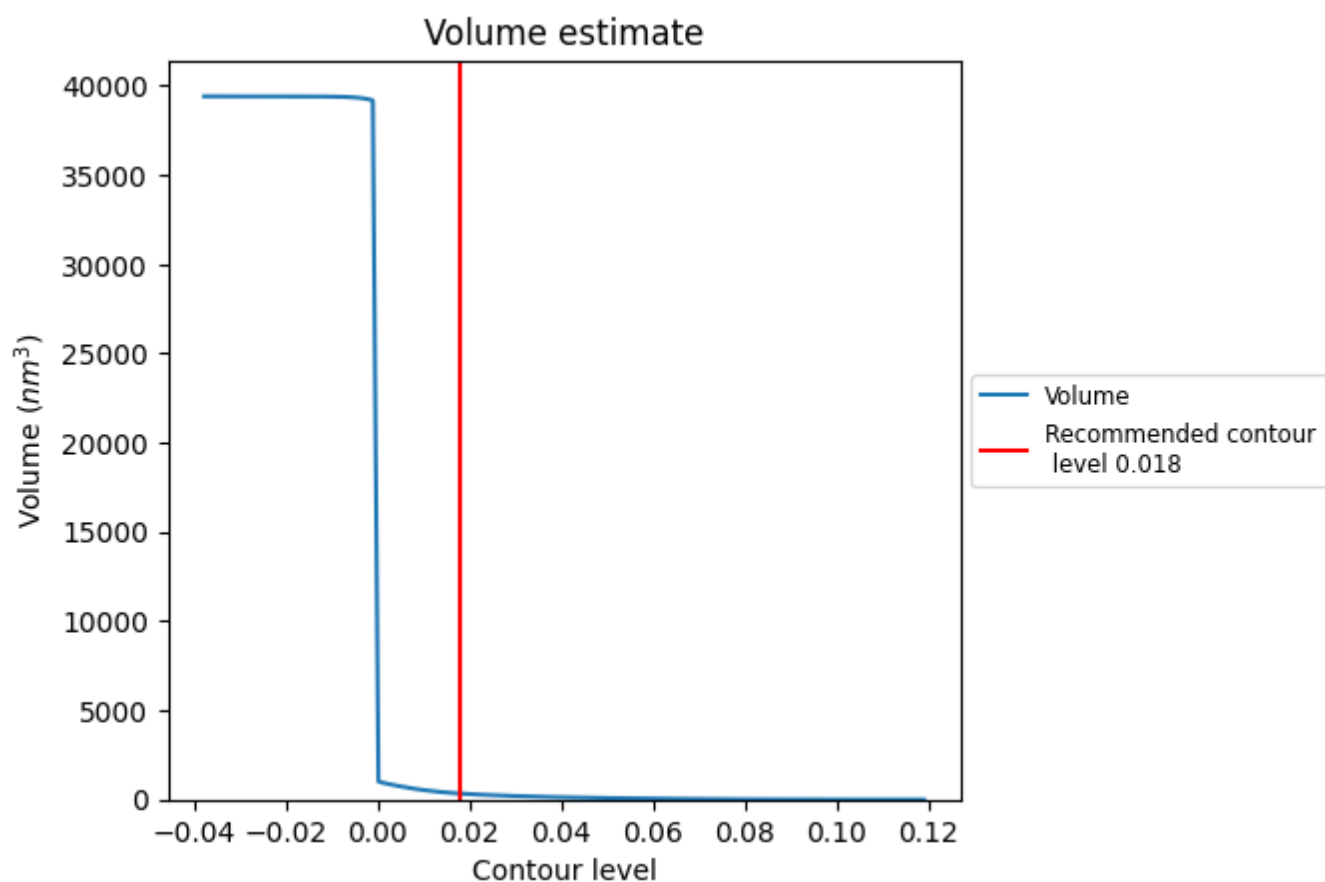
This section contains the results of statistical analysis of the map.

7.1 Map-value distribution [i](#)



The map-value distribution is plotted in 128 intervals along the x-axis. The y-axis is logarithmic. A spike in this graph at zero usually indicates that the volume has been masked.

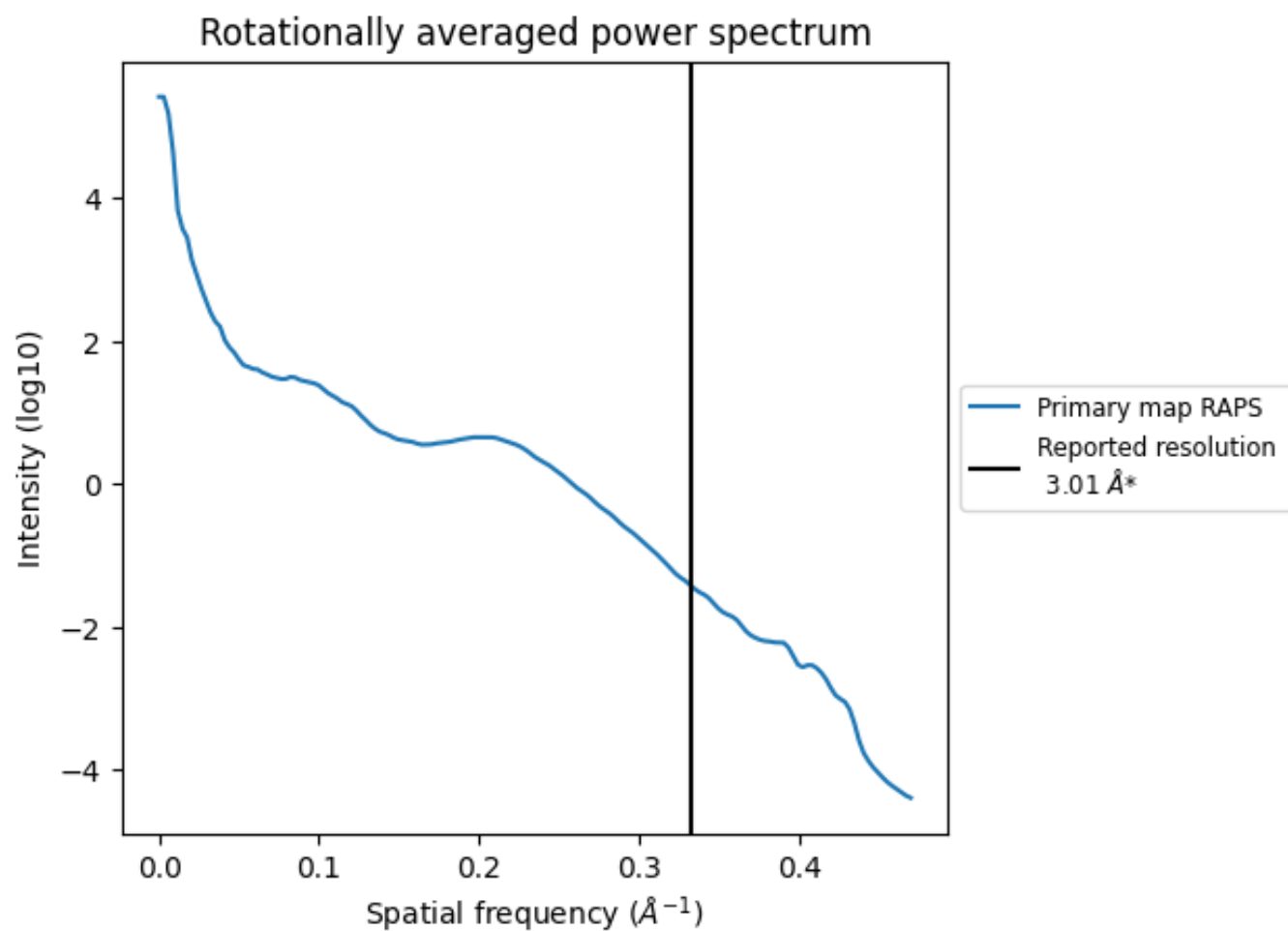
7.2 Volume estimate [i](#)



The volume at the recommended contour level is 338 nm^3 ; this corresponds to an approximate mass of 305 kDa.

The volume estimate graph shows how the enclosed volume varies with the contour level. The recommended contour level is shown as a vertical line and the intersection between the line and the curve gives the volume of the enclosed surface at the given level.

7.3 Rotationally averaged power spectrum ⓘ



*Reported resolution corresponds to spatial frequency of 0.332 Å⁻¹

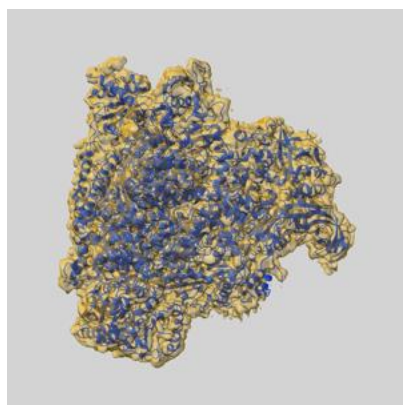
8 Fourier-Shell correlation

This section was not generated. No FSC curve or half-maps provided.

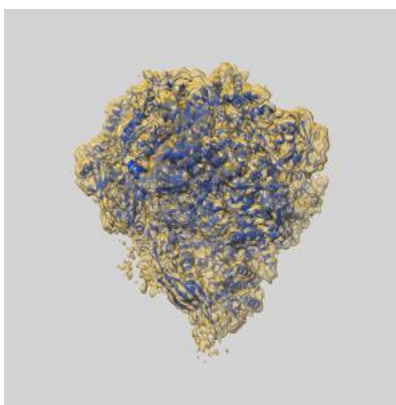
9 Map-model fit [i](#)

This section contains information regarding the fit between EMDB map EMD-11851 and PDB model 7AP9. Per-residue inclusion information can be found in section [3](#) on page [7](#).

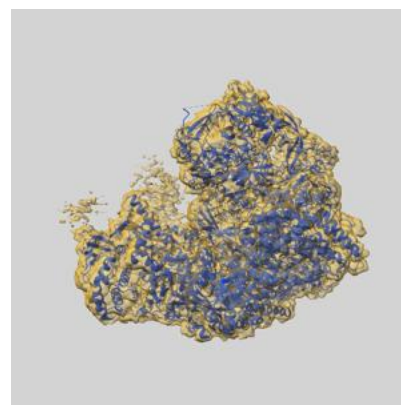
9.1 Map-model overlay [i](#)



X



Y



Z

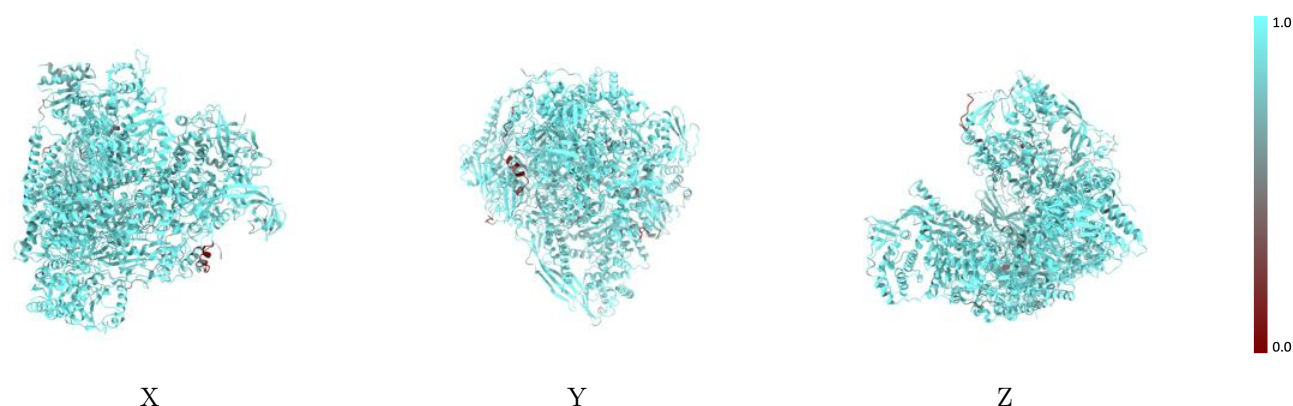
The images above show the 3D surface view of the map at the recommended contour level 0.018 at 50% transparency in yellow overlaid with a ribbon representation of the model coloured in blue. These images allow for the visual assessment of the quality of fit between the atomic model and the map.

9.2 Q-score mapped to coordinate model [i](#)



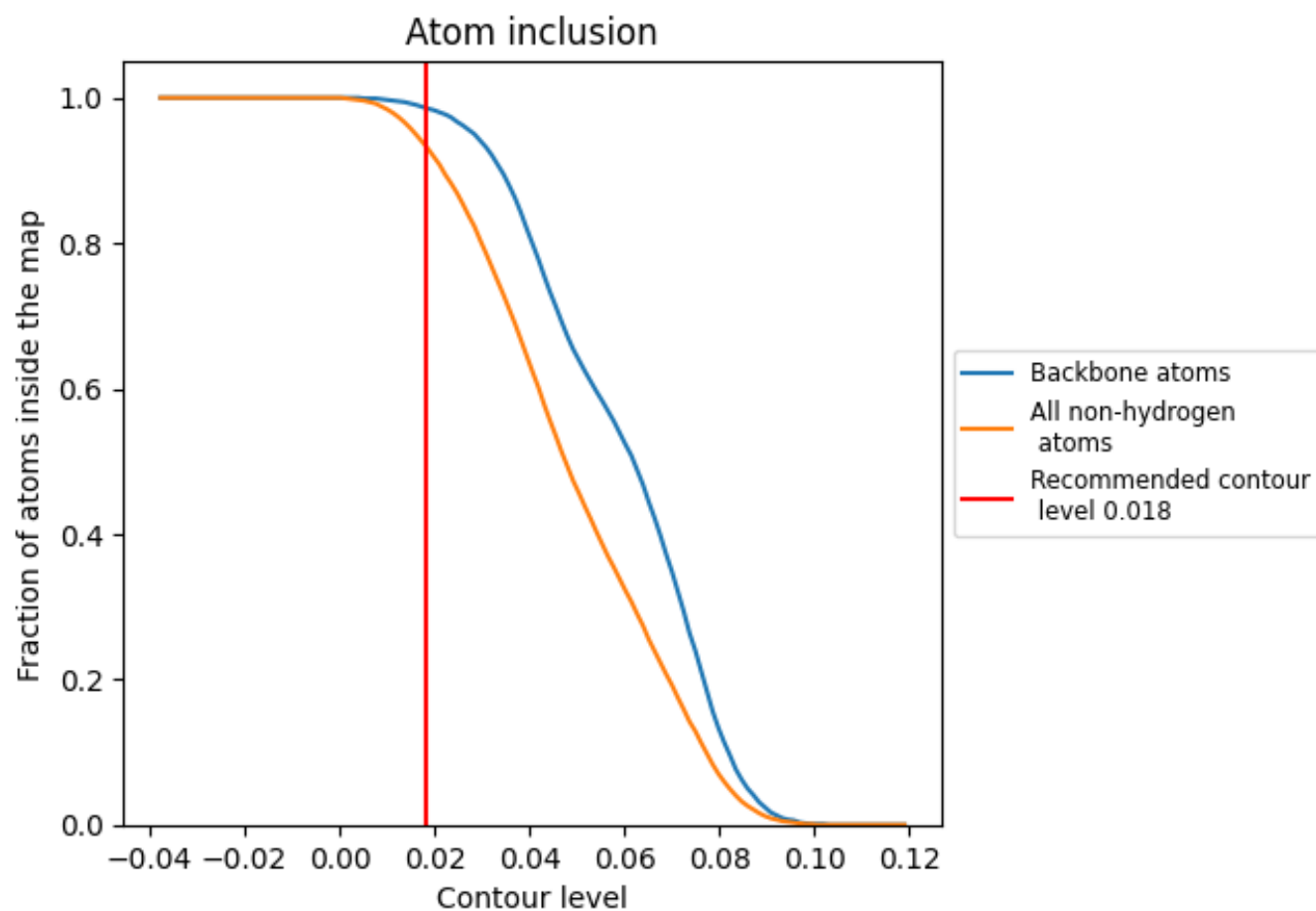
The images above show the model with each residue coloured according to its Q-score. This shows their resolvability in the map with higher Q-score values reflecting better resolvability. Please note: Q-score is calculating the resolvability of atoms, and thus high values are only expected at resolutions at which atoms can be resolved. Low Q-score values may therefore be expected for many entries.

9.3 Atom inclusion mapped to coordinate model [i](#)



The images above show the model with each residue coloured according to its atom inclusion. This shows to what extent they are inside the map at the recommended contour level (0.018).

9.4 Atom inclusion [i](#)



At the recommended contour level, 99% of all backbone atoms, 94% of all non-hydrogen atoms, are inside the map.

9.5 Map-model fit summary ⓘ

The table lists the average atom inclusion at the recommended contour level (0.018) and Q-score for the entire model and for each chain.

Chain	Atom inclusion	Q-score
All	<div></div> 0.9350	<div></div> 0.5150
A	<div></div> 0.9480	<div></div> 0.5240
B	<div></div> 0.9580	<div></div> 0.5300
C	<div></div> 0.9670	<div></div> 0.5340
E	<div></div> 0.9680	<div></div> 0.5450
F	<div></div> 0.9740	<div></div> 0.5510
G	<div></div> 0.9270	<div></div> 0.5080
I	<div></div> 0.8360	<div></div> 0.4490
J	<div></div> 0.9790	<div></div> 0.5420
P	<div></div> 0.7590	<div></div> 0.3120
S	<div></div> 0.8230	<div></div> 0.4460
T	<div></div> 0.8550	<div></div> 0.2920

1.0

0.0

<0.0