



wwPDB X-ray Structure Validation Summary Report ⓘ

Sep 28, 2024 – 08:30 PM EDT

PDB ID : 2AZX
Title : Charged and uncharged tRNAs adopt distinct conformations when complexed with human tryptophanyl-tRNA synthetase
Authors : Yang, X.L.; Otero, F.J.; Ewalt, K.L.; Liu, J.; Swairjo, M.A.; Kohrer, C.; RajBhandary, U.L.; Skene, R.J.; McRee, D.E.; Schimmel, P.
Deposited on : 2005-09-12
Resolution : 2.80 Å(reported)

This is a wwPDB X-ray Structure Validation Summary Report for a publicly released PDB entry.

We welcome your comments at validation@mail.wwpdb.org

A user guide is available at

<https://www.wwpdb.org/validation/2017/XrayValidationReportHelp>

with specific help available everywhere you see the ⓘ symbol.

The types of validation reports are described at

<http://www.wwpdb.org/validation/2017/FAQs#types>.

The following versions of software and data (see [references ⓘ](#)) were used in the production of this report:

MolProbity	:	4.02b-467
Mogul	:	2022.3.0, CSD as543be (2022)
Xtriage (Phenix)	:	1.20.1
EDS	:	3.0
Percentile statistics	:	20231227.v01 (using entries in the PDB archive December 27th 2023)
CCP4	:	9.0.003 (Gargrove)
Density-Fitness	:	1.0.11
Ideal geometry (proteins)	:	Engh & Huber (2001)
Ideal geometry (DNA, RNA)	:	Parkinson et al. (1996)
Validation Pipeline (wwPDB-VP)	:	2.39

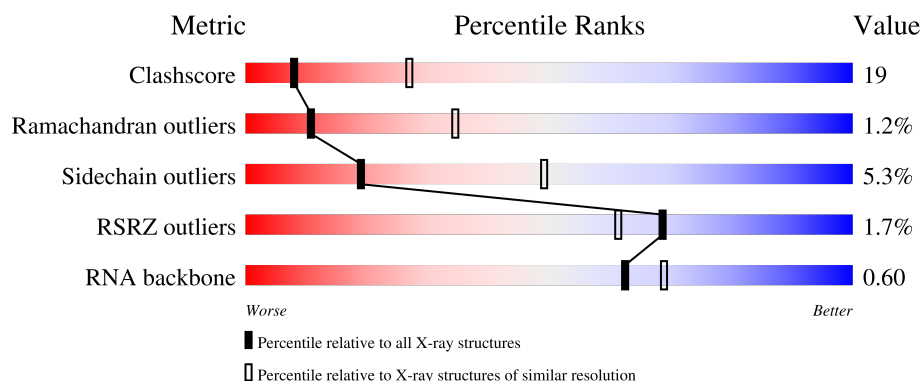
1 Overall quality at a glance

The following experimental techniques were used to determine the structure:

X-RAY DIFFRACTION

The reported resolution of this entry is 2.80 Å.

Percentile scores (ranging between 0-100) for global validation metrics of the entry are shown in the following graphic. The table shows the number of entries on which the scores are based.



Metric	Whole archive (#Entries)	Similar resolution (#Entries, resolution range(Å))
Clashscore	180529	4123 (2.80-2.80)
Ramachandran outliers	177936	4071 (2.80-2.80)
Sidechain outliers	177891	4073 (2.80-2.80)
RSRZ outliers	164620	3659 (2.80-2.80)
RNA backbone	3690	1037 (3.00-2.60)

The table below summarises the geometric issues observed across the polymeric chains and their fit to the electron density. The red, orange, yellow and green segments of the lower bar indicate the fraction of residues that contain outliers for ≥ 3 , 2, 1 and 0 types of geometric quality criteria respectively. A grey segment represents the fraction of residues that are not modelled. The numeric value for each fraction is indicated below the corresponding segment, with a dot representing fractions $\leq 5\%$. The upper red bar (where present) indicates the fraction of residues that have poor fit to the electron density. The numeric value is given above the bar.

Mol	Chain	Length	Quality of chain
1	C	75	<div> <div>5%</div> <div>37%</div> <div>43%</div> <div>16%</div> <div>.</div> </div>
1	D	75	<div> <div>8%</div> <div>36%</div> <div>39%</div> <div>20%</div> <div>..</div> </div>
2	A	477	<div> <div>51%</div> <div>27%</div> <div>.</div> <div>19%</div> </div>
2	B	477	<div> <div>%</div> <div>51%</div> <div>27%</div> <div>.</div> <div>19%</div> </div>

2 Entry composition

There are 7 unique types of molecules in this entry. The entry contains 9445 atoms, of which 0 are hydrogens and 0 are deuteriums.

In the tables below, the ZeroOcc column contains the number of atoms modelled with zero occupancy, the AltConf column contains the number of residues with at least one atom in alternate conformation and the Trace column contains the number of residues modelled with at most 2 atoms.

- Molecule 1 is a RNA chain called 72-MER.

Mol	Chain	Residues	Atoms					ZeroOcc	AltConf	Trace
1	C	72	Total	C	N	O	P	0	0	0
			1541	686	276	507	72			
1	D	72	Total	C	N	O	P	0	0	0
			1541	686	276	507	72			

- Molecule 2 is a protein called Tryptophanyl-tRNA synthetase.

Mol	Chain	Residues	Atoms						ZeroOcc	AltConf	Trace
2	A	387	Total	C	N	O	S	Se	0	0	0
			3114	1994	527	578	5	10			
2	B	388	Total	C	N	O	S	Se	0	0	0
			3119	1997	528	579	5	10			

There are 42 discrepancies between the modelled and reference sequences:

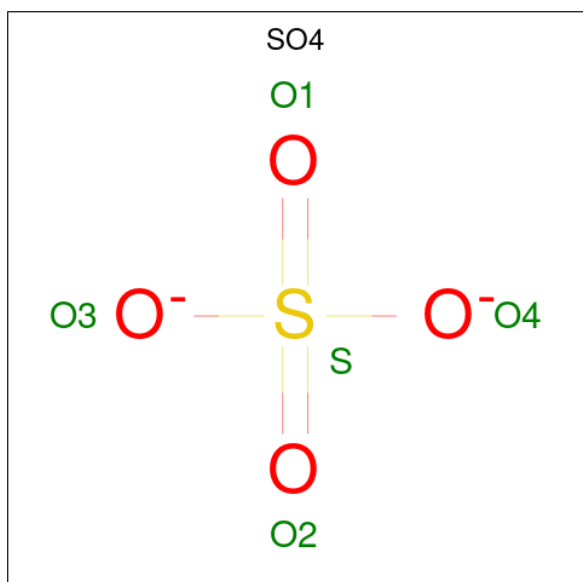
Chain	Residue	Modelled	Actual	Comment	Reference
A	1	MSE	MET	modified residue	UNP P23381
A	42	MSE	MET	modified residue	UNP P23381
A	48	MSE	MET	modified residue	UNP P23381
A	143	MSE	MET	modified residue	UNP P23381
A	169	MSE	MET	modified residue	UNP P23381
A	195	MSE	MET	modified residue	UNP P23381
A	213	GLY	SER	variant	UNP P23381
A	214	ASP	TYR	variant	UNP P23381
A	241	MSE	MET	modified residue	UNP P23381
A	243	MSE	MET	modified residue	UNP P23381
A	319	MSE	MET	modified residue	UNP P23381
A	350	MSE	MET	modified residue	UNP P23381
A	401	MSE	MET	modified residue	UNP P23381
A	425	MSE	MET	modified residue	UNP P23381
A	461	MSE	MET	modified residue	UNP P23381
A	472	HIS	-	expression tag	UNP P23381
A	473	HIS	-	expression tag	UNP P23381

Continued on next page...

Continued from previous page...

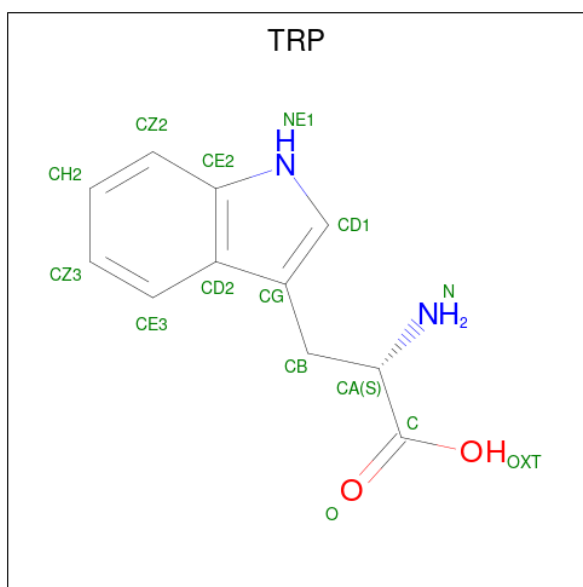
Chain	Residue	Modelled	Actual	Comment	Reference
A	474	HIS	-	expression tag	UNP P23381
A	475	HIS	-	expression tag	UNP P23381
A	476	HIS	-	expression tag	UNP P23381
A	477	HIS	-	expression tag	UNP P23381
B	1	MSE	MET	modified residue	UNP P23381
B	42	MSE	MET	modified residue	UNP P23381
B	48	MSE	MET	modified residue	UNP P23381
B	143	MSE	MET	modified residue	UNP P23381
B	169	MSE	MET	modified residue	UNP P23381
B	195	MSE	MET	modified residue	UNP P23381
B	213	GLY	SER	variant	UNP P23381
B	214	ASP	TYR	variant	UNP P23381
B	241	MSE	MET	modified residue	UNP P23381
B	243	MSE	MET	modified residue	UNP P23381
B	319	MSE	MET	modified residue	UNP P23381
B	350	MSE	MET	modified residue	UNP P23381
B	401	MSE	MET	modified residue	UNP P23381
B	425	MSE	MET	modified residue	UNP P23381
B	461	MSE	MET	modified residue	UNP P23381
B	472	HIS	-	expression tag	UNP P23381
B	473	HIS	-	expression tag	UNP P23381
B	474	HIS	-	expression tag	UNP P23381
B	475	HIS	-	expression tag	UNP P23381
B	476	HIS	-	expression tag	UNP P23381
B	477	HIS	-	expression tag	UNP P23381

- Molecule 3 is SULFATE ION (three-letter code: SO4) (formula: O₄S).



Mol	Chain	Residues	Atoms	ZeroOcc	AltConf
3	A	1	Total O S 5 4 1	0	0
3	A	1	Total O S 5 4 1	0	0
3	A	1	Total O S 5 4 1	0	0
3	A	1	Total O S 5 4 1	0	0
3	B	1	Total O S 5 4 1	0	0
3	B	1	Total O S 5 4 1	0	0
3	B	1	Total O S 5 4 1	0	0
3	B	1	Total O S 5 4 1	0	0
3	B	1	Total O S 5 4 1	0	0
3	B	1	Total O S 5 4 1	0	0

- Molecule 4 is TRYPTOPHAN (three-letter code: TRP) (formula: $C_{11}H_{12}N_2O_2$).



Mol	Chain	Residues	Atoms	ZeroOcc	AltConf
4	A	1	Total C N O 15 11 2 2	0	0
4	A	1	Total C N O 15 11 2 2	0	0

Continued on next page...

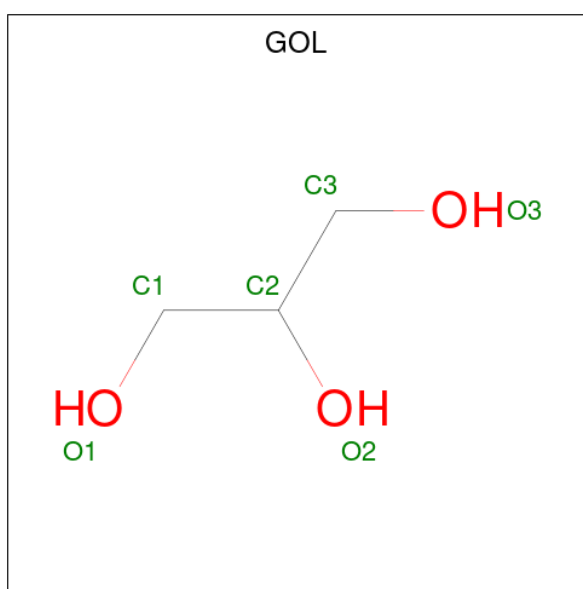
Continued from previous page...

Mol	Chain	Residues	Atoms				ZeroOcc	AltConf
4	B	1	Total	C	N	O	0	0
			15	11	2	2		

- Molecule 5 is MAGNESIUM ION (three-letter code: MG) (formula: Mg).

Mol	Chain	Residues	Atoms		ZeroOcc	AltConf
5	B	1	Total	Mg	0	0
			1	1		

- Molecule 6 is GLYCEROL (three-letter code: GOL) (formula: C₃H₈O₃).



Mol	Chain	Residues	Atoms			ZeroOcc	AltConf
6	B	1	Total	C	O	0	0
			6	3	3		
6	B	1	Total	C	O	0	0
			6	3	3		

- Molecule 7 is water.

Mol	Chain	Residues	Atoms		ZeroOcc	AltConf
7	C	2	Total	O	0	0
			2	2		
7	D	2	Total	O	0	0
			2	2		
7	A	9	Total	O	0	0
			9	9		

Continued on next page...

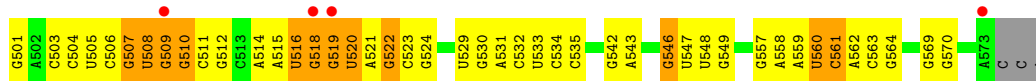
Continued from previous page...

Mol	Chain	Residues	Atoms		ZeroOcc	AltConf
7	B	9	Total	O	0	0
			9	9		

3 Residue-property plots [i](#)

These plots are drawn for all protein, RNA, DNA and oligosaccharide chains in the entry. The first graphic for a chain summarises the proportions of the various outlier classes displayed in the second graphic. The second graphic shows the sequence view annotated by issues in geometry and electron density. Residues are color-coded according to the number of geometric quality criteria for which they contain at least one outlier: green = 0, yellow = 1, orange = 2 and red = 3 or more. A red dot above a residue indicates a poor fit to the electron density ($RSRZ > 2$). Stretches of 2 or more consecutive residues without any outlier are shown as a green connector. Residues present in the sample, but not in the model, are shown in grey.

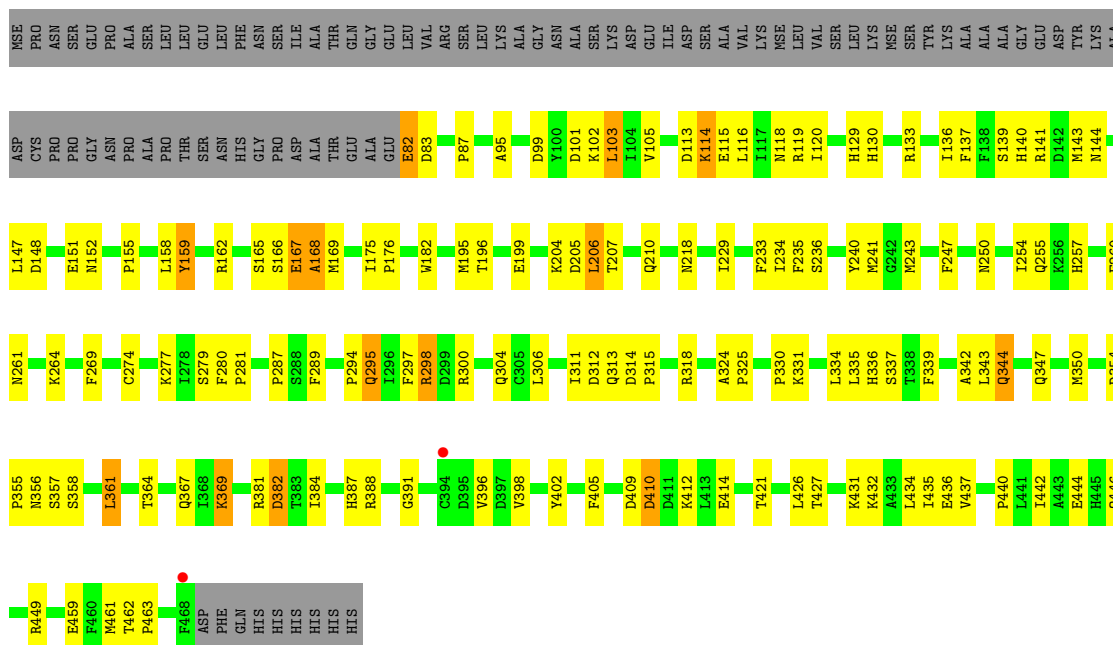
- Molecule 1: 72-MER



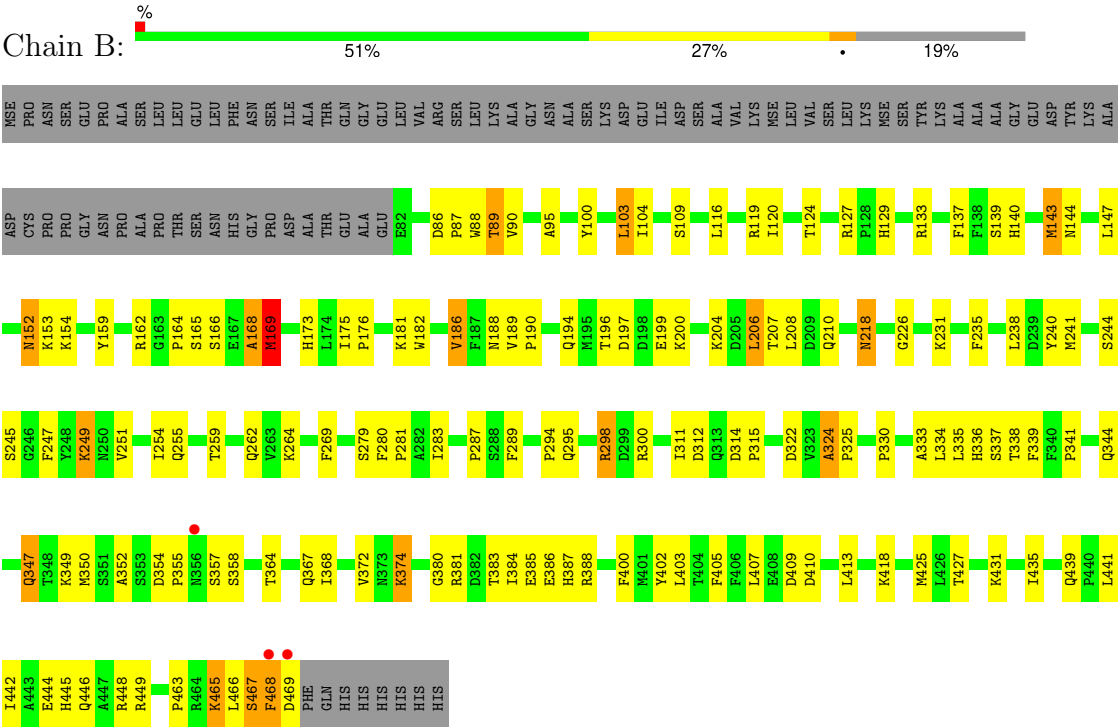
- Molecule 1: 72-MER



- Molecule 2: Tryptophanyl-tRNA synthetase



- Molecule 2: Tryptophanyl-tRNA synthetase



4 Data and refinement statistics

Property	Value	Source
Space group	I 21 21 21	Depositor
Cell constants a, b, c, α , β , γ	114.06Å 132.62Å 246.63Å 90.00° 90.00° 90.00°	Depositor
Resolution (Å)	50.00 – 2.80 50.00 – 2.80	Depositor EDS
% Data completeness (in resolution range)	89.0 (50.00-2.80) 89.0 (50.00-2.80)	Depositor EDS
R_{merge}	0.06	Depositor
R_{sym}	(Not available)	Depositor
$\langle I/\sigma(I) \rangle$ ¹	1.11 (at 2.77Å)	Xtriage
Refinement program	CNS 1.1	Depositor
R, R_{free}	0.205 , 0.252 0.198 , (Not available)	Depositor DCC
R_{free} test set	No test flags present.	wwPDB-VP
Wilson B-factor (Å ²)	67.1	Xtriage
Anisotropy	0.295	Xtriage
Bulk solvent k_{sol} (e/Å ³), B_{sol} (Å ²)	0.34 , 51.4	EDS
L-test for twinning ²	$\langle L \rangle = 0.49$, $\langle L^2 \rangle = 0.32$	Xtriage
Estimated twinning fraction	No twinning to report.	Xtriage
F_o, F_c correlation	0.94	EDS
Total number of atoms	9445	wwPDB-VP
Average B, all atoms (Å ²)	78.0	wwPDB-VP

Xtriage's analysis on translational NCS is as follows: *The largest off-origin peak in the Patterson function is 3.26% of the height of the origin peak. No significant pseudotranslation is detected.*

¹Intensities estimated from amplitudes.

²Theoretical values of $\langle |L| \rangle$, $\langle L^2 \rangle$ for acentric reflections are 0.5, 0.333 respectively for untwinned datasets, and 0.375, 0.2 for perfectly twinned datasets.

5 Model quality [i](#)

5.1 Standard geometry [i](#)

Bond lengths and bond angles in the following residue types are not validated in this section: GOL, MG, SO4

The Z score for a bond length (or angle) is the number of standard deviations the observed value is removed from the expected value. A bond length (or angle) with $|Z| > 5$ is considered an outlier worth inspection. RMSZ is the root-mean-square of all Z scores of the bond lengths (or angles).

Mol	Chain	Bond lengths		Bond angles	
		RMSZ	$\# Z > 5$	RMSZ	$\# Z > 5$
1	C	0.36	1/1722 (0.1%)	0.70	0/2682
1	D	0.40	1/1722 (0.1%)	0.71	1/2682 (0.0%)
2	A	0.41	0/3179	0.65	0/4276
2	B	0.44	0/3184	0.67	0/4283
All	All	0.41	2/9807 (0.0%)	0.68	1/13923 (0.0%)

Chiral center outliers are detected by calculating the chiral volume of a chiral center and verifying if the center is modelled as a planar moiety or with the opposite hand. A planarity outlier is detected by checking planarity of atoms in a peptide group, atoms in a mainchain group or atoms of a sidechain that are expected to be planar.

Mol	Chain	#Chirality outliers	#Planarity outliers
1	C	0	1
1	D	0	1
All	All	0	2

All (2) bond length outliers are listed below:

Mol	Chain	Res	Type	Atoms	Z	Observed(Å)	Ideal(Å)
1	C	501	G	OP3-P	-7.40	1.52	1.61
1	D	501	G	OP3-P	-7.17	1.52	1.61

All (1) bond angle outliers are listed below:

Mol	Chain	Res	Type	Atoms	Z	Observed(°)	Ideal(°)
1	D	560	U	N1-C1'-C2'	5.06	120.58	114.00

There are no chirality outliers.

All (2) planarity outliers are listed below:

Mol	Chain	Res	Type	Group
1	C	560	U	Sidechain
1	D	560	U	Sidechain

5.2 Too-close contacts

In the following table, the Non-H and H(model) columns list the number of non-hydrogen atoms and hydrogen atoms in the chain respectively. The H(added) column lists the number of hydrogen atoms added and optimized by MolProbity. The Clashes column lists the number of clashes within the asymmetric unit, whereas Symm-Clashes lists symmetry-related clashes.

Mol	Chain	Non-H	H(model)	H(added)	Clashes	Symm-Clashes
1	C	1541	0	777	48	0
1	D	1541	0	777	43	0
2	A	3114	0	3061	138	0
2	B	3119	0	3063	116	0
3	A	20	0	0	1	0
3	B	30	0	0	2	0
4	A	30	0	18	1	0
4	B	15	0	9	0	0
5	B	1	0	0	0	0
6	B	12	0	16	2	0
7	A	9	0	0	1	0
7	B	9	0	0	0	0
7	C	2	0	0	0	0
7	D	2	0	0	0	0
All	All	9445	0	7721	328	0

The all-atom clashscore is defined as the number of clashes found per 1000 atoms (including hydrogen atoms). The all-atom clashscore for this structure is 19.

The worst 5 of 328 close contacts within the same asymmetric unit are listed below, sorted by their clash magnitude.

Atom-1	Atom-2	Interatomic distance (Å)	Clash overlap (Å)
2:B:465:LYS:HD3	2:B:465:LYS:H	1.02	1.16
2:A:364:THR:H	2:A:367:GLN:NE2	1.53	1.07
1:D:518:G:H2'	1:D:557:G:N2	1.75	1.01
1:D:558:A:H4'	1:D:559:A:OP1	1.57	0.99
2:A:143:MSE:HE1	2:A:306:LEU:HD11	1.42	0.99

There are no symmetry-related clashes.

5.3 Torsion angles [i](#)

5.3.1 Protein backbone [i](#)

In the following table, the Percentiles column shows the percent Ramachandran outliers of the chain as a percentile score with respect to all X-ray entries followed by that with respect to entries of similar resolution.

The Analysed column shows the number of residues for which the backbone conformation was analysed, and the total number of residues.

Mol	Chain	Analysed	Favoured	Allowed	Outliers	Percentiles	
2	A	385/477 (81%)	358 (93%)	25 (6%)	2 (0%)	25	56
2	B	386/477 (81%)	358 (93%)	21 (5%)	7 (2%)	7	24
All	All	771/954 (81%)	716 (93%)	46 (6%)	9 (1%)	11	34

5 of 9 Ramachandran outliers are listed below:

Mol	Chain	Res	Type
2	A	168	ALA
2	B	165	SER
2	B	168	ALA
2	B	467	SER
2	B	468	PHE

5.3.2 Protein sidechains [i](#)

In the following table, the Percentiles column shows the percent sidechain outliers of the chain as a percentile score with respect to all X-ray entries followed by that with respect to entries of similar resolution.

The Analysed column shows the number of residues for which the sidechain conformation was analysed, and the total number of residues.

Mol	Chain	Analysed	Rotameric	Outliers	Percentiles	
2	A	340/402 (85%)	322 (95%)	18 (5%)	19	49
2	B	340/402 (85%)	322 (95%)	18 (5%)	19	49
All	All	680/804 (85%)	644 (95%)	36 (5%)	19	49

5 of 36 residues with a non-rotameric sidechain are listed below:

Mol	Chain	Res	Type
2	B	249	LYS

Continued on next page...

Continued from previous page...

Mol	Chain	Res	Type
2	B	465	LYS
2	B	298	ARG
2	B	374	LYS
2	A	298	ARG

Sometimes sidechains can be flipped to improve hydrogen bonding and reduce clashes. 5 of 25 such sidechains are listed below:

Mol	Chain	Res	Type
2	B	118	ASN
2	B	145	GLN
2	B	389	GLN
2	B	140	HIS
2	B	152	ASN

5.3.3 RNA ⓘ

Mol	Chain	Analysed	Backbone Outliers	Pucker Outliers
1	C	71/75 (94%)	12 (16%)	4 (5%)
1	D	71/75 (94%)	19 (26%)	5 (7%)
All	All	142/150 (94%)	31 (21%)	9 (6%)

5 of 31 RNA backbone outliers are listed below:

Mol	Chain	Res	Type
1	C	508	U
1	C	509	G
1	C	510	G
1	C	516	U
1	C	518	G

5 of 9 RNA pucker outliers are listed below:

Mol	Chain	Res	Type
1	D	548	U
1	D	558	A
1	C	519	G
1	D	507	G
1	D	516	U

5.4 Non-standard residues in protein, DNA, RNA chains [i](#)

There are no non-standard protein/DNA/RNA residues in this entry.

5.5 Carbohydrates [i](#)

There are no oligosaccharides in this entry.

5.6 Ligand geometry [i](#)

Of 16 ligands modelled in this entry, 1 is monoatomic - leaving 15 for Mogul analysis.

In the following table, the Counts columns list the number of bonds (or angles) for which Mogul statistics could be retrieved, the number of bonds (or angles) that are observed in the model and the number of bonds (or angles) that are defined in the Chemical Component Dictionary. The Link column lists molecule types, if any, to which the group is linked. The Z score for a bond length (or angle) is the number of standard deviations the observed value is removed from the expected value. A bond length (or angle) with $|Z| > 2$ is considered an outlier worth inspection. RMSZ is the root-mean-square of all Z scores of the bond lengths (or angles).

Mol	Type	Chain	Res	Link	Bond lengths			Bond angles		
					Counts	RMSZ	$\# Z > 2$	Counts	RMSZ	$\# Z > 2$
6	GOL	B	801	-	5,5,5	0.41	0	5,5,5	0.38	0
3	SO4	B	706	-	4,4,4	0.37	0	6,6,6	0.17	0
3	SO4	B	710	-	4,4,4	0.37	0	6,6,6	0.10	0
4	TRP	A	602	-	14,16,16	2.20	6 (42%)	13,22,22	0.97	0
3	SO4	B	705	-	4,4,4	0.39	0	6,6,6	0.18	0
4	TRP	B	603	-	14,16,16	2.02	4 (28%)	13,22,22	0.92	0
3	SO4	A	707	-	4,4,4	0.40	0	6,6,6	0.05	0
3	SO4	A	708	-	4,4,4	0.40	0	6,6,6	0.05	0
3	SO4	B	703	-	4,4,4	0.39	0	6,6,6	0.20	0
3	SO4	A	702	-	4,4,4	0.37	0	6,6,6	0.16	0
3	SO4	B	709	-	4,4,4	0.39	0	6,6,6	0.06	0
4	TRP	A	601	-	14,16,16	2.17	5 (35%)	13,22,22	0.95	0
3	SO4	B	701	-	4,4,4	0.40	0	6,6,6	0.06	0
3	SO4	A	704	-	4,4,4	0.36	0	6,6,6	0.16	0
6	GOL	B	802	-	5,5,5	0.40	0	5,5,5	0.33	0

In the following table, the Chirals column lists the number of chiral outliers, the number of chiral centers analysed, the number of these observed in the model and the number defined in the Chemical Component Dictionary. Similar counts are reported in the Torsion and Rings columns. '-' means no outliers of that kind were identified.

Mol	Type	Chain	Res	Link	Chirals	Torsions	Rings
4	TRP	A	602	-	-	2/7/8/8	0/2/2/2
4	TRP	B	603	-	-	0/7/8/8	0/2/2/2
6	GOL	B	801	-	-	0/4/4/4	-
4	TRP	A	601	-	-	2/7/8/8	0/2/2/2
6	GOL	B	802	-	-	0/4/4/4	-

The worst 5 of 15 bond length outliers are listed below:

Mol	Chain	Res	Type	Atoms	Z	Observed(Å)	Ideal(Å)
4	A	602	TRP	OXT-C	4.97	1.46	1.30
4	B	603	TRP	OXT-C	4.94	1.46	1.30
4	A	601	TRP	OXT-C	4.67	1.45	1.30
4	A	601	TRP	CZ3-CE3	3.64	1.44	1.36
4	A	602	TRP	CZ3-CE3	3.49	1.44	1.36

There are no bond angle outliers.

There are no chirality outliers.

All (4) torsion outliers are listed below:

Mol	Chain	Res	Type	Atoms
4	A	602	TRP	C-CA-CB-CG
4	A	601	TRP	N-CA-CB-CG
4	A	602	TRP	N-CA-CB-CG
4	A	601	TRP	C-CA-CB-CG

There are no ring outliers.

5 monomers are involved in 6 short contacts:

Mol	Chain	Res	Type	Clashes	Symm-Clashes
6	B	801	GOL	2	0
3	B	705	SO4	1	0
3	B	703	SO4	1	0
4	A	601	TRP	1	0
3	A	704	SO4	1	0

5.7 Other polymers ⓘ

There are no such residues in this entry.

5.8 Polymer linkage issues ⓘ

There are no chain breaks in this entry.

6 Fit of model and data [i](#)

6.1 Protein, DNA and RNA chains [i](#)

In the following table, the column labelled ‘#RSRZ> 2’ contains the number (and percentage) of RSRZ outliers, followed by percent RSRZ outliers for the chain as percentile scores relative to all X-ray entries and entries of similar resolution. The OWAB column contains the minimum, median, 95th percentile and maximum values of the occupancy-weighted average B-factor per residue. The column labelled ‘Q< 0.9’ lists the number of (and percentage) of residues with an average occupancy less than 0.9.

Mol	Chain	Analysed	<RSRZ>	#RSRZ>2	OWAB(Å ²)	Q<0.9
1	C	72/75 (96%)	0.54	4 (5%) 31 24	81, 127, 155, 167	0
1	D	72/75 (96%)	0.69	6 (8%) 19 14	57, 107, 188, 200	0
2	A	377/477 (79%)	-0.41	2 (0%) 87 83	39, 60, 84, 97	0
2	B	378/477 (79%)	-0.41	3 (0%) 82 77	39, 54, 72, 98	1 (0%)
All	All	899/1104 (81%)	-0.24	15 (1%) 69 61	39, 59, 134, 200	1 (0%)

The worst 5 of 15 RSRZ outliers are listed below:

Mol	Chain	Res	Type	RSRZ
2	B	469	ASP	4.7
2	B	468	PHE	3.2
2	A	468	PHE	2.9
1	D	516	U	2.8
1	D	509	G	2.7

6.2 Non-standard residues in protein, DNA, RNA chains [i](#)

There are no non-standard protein/DNA/RNA residues in this entry.

6.3 Carbohydrates [i](#)

There are no monosaccharides in this entry.

6.4 Ligands [i](#)

In the following table, the Atoms column lists the number of modelled atoms in the group and the number defined in the chemical component dictionary. The B-factors column lists the minimum, median, 95th percentile and maximum values of B factors of atoms in the group. The column labelled ‘Q< 0.9’ lists the number of atoms with occupancy less than 0.9.

Mol	Type	Chain	Res	Atoms	RSCC	RSR	B-factors(\AA^2)	Q<0.9
6	GOL	B	802	6/6	0.64	0.19	93,94,95,96	0
3	SO4	A	707	5/5	0.73	0.13	125,125,126,126	0
3	SO4	B	710	5/5	0.78	0.07	155,155,156,156	0
3	SO4	B	709	5/5	0.81	0.08	131,131,131,132	0
3	SO4	B	706	5/5	0.83	0.10	112,114,114,114	0
3	SO4	B	705	5/5	0.87	0.12	103,104,104,105	0
3	SO4	A	708	5/5	0.88	0.11	122,123,124,124	0
6	GOL	B	801	6/6	0.91	0.10	64,67,67,71	0
3	SO4	A	704	5/5	0.92	0.09	76,78,79,80	0
4	TRP	A	602	15/15	0.92	0.18	103,106,112,113	0
5	MG	B	901	1/1	0.93	0.12	82,82,82,82	0
3	SO4	B	701	5/5	0.93	0.10	77,79,80,80	0
4	TRP	B	603	15/15	0.93	0.10	43,45,55,55	0
4	TRP	A	601	15/15	0.94	0.10	51,53,61,62	0
3	SO4	A	702	5/5	0.94	0.07	100,102,103,103	0
3	SO4	B	703	5/5	0.95	0.07	72,73,74,75	0

6.5 Other polymers [i](#)

There are no such residues in this entry.