



Full wwPDB X-ray Structure Validation Report ⓘ

Mar 18, 2025 – 08:12 PM EDT

PDB ID : 3BRM
Title : Crystal structure of the covalent complex between the Bacillus subtilis glutaminase YbgJ and 5-oxo-L-norleucine formed by reaction of the protein with 6-diazo-5-oxo-L-norleucine
Authors : Singer, A.U.; Kim, Y.; Dementieva, I.; Vinokour, E.; Joachimiak, A.; Savchenko, A.; Yakunin, A.
Deposited on : 2007-12-21
Resolution : 2.29 Å(reported)

This is a Full wwPDB X-ray Structure Validation Report for a publicly released PDB entry.

We welcome your comments at validation@mail.wwpdb.org

A user guide is available at

<https://www.wwpdb.org/validation/2017/XrayValidationReportHelp>

with specific help available everywhere you see the ⓘ symbol.

The types of validation reports are described at

<http://www.wwpdb.org/validation/2017/FAQs#types>.

The following versions of software and data (see [references ⓘ](#)) were used in the production of this report:

MolProbity	:	4.02b-467
Mogul	:	2022.3.0, CSD as543be (2022)
Xtriage (Phenix)	:	1.21
EDS	:	3.0
Percentile statistics	:	20231227.v01 (using entries in the PDB archive December 27th 2023)
CCP4	:	9.0.004 (Gargrove)
Density-Fitness	:	1.0.11
Ideal geometry (proteins)	:	Engh & Huber (2001)
Ideal geometry (DNA, RNA)	:	Parkinson et al. (1996)
Validation Pipeline (wwPDB-VP)	:	2.41.4

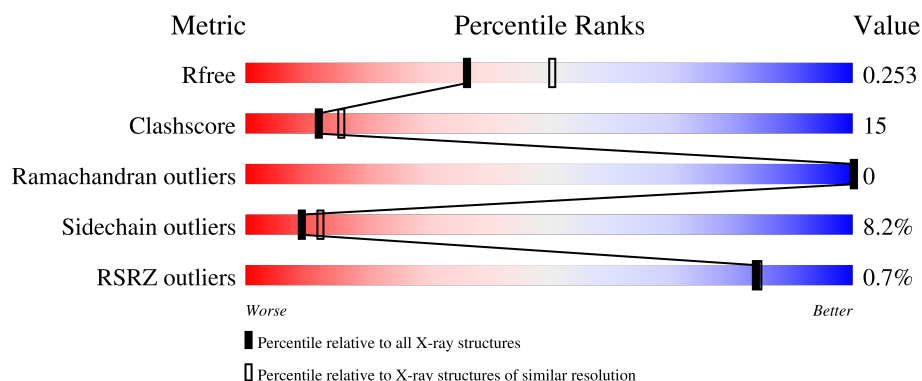
1 Overall quality at a glance

The following experimental techniques were used to determine the structure:

X-RAY DIFFRACTION



The reported resolution of this entry is 2.29 Å.

Percentile scores (ranging between 0-100) for global validation metrics of the entry are shown in the following graphic. The table shows the number of entries on which the scores are based.



Metric	Whole archive (#Entries)	Similar resolution (#Entries, resolution range(Å))
R_{free}	164625	5963 (2.30-2.30)
Clashscore	180529	6698 (2.30-2.30)
Ramachandran outliers	177936	6640 (2.30-2.30)
Sidechain outliers	177891	6640 (2.30-2.30)
RSRZ outliers	164620	5963 (2.30-2.30)

The table below summarises the geometric issues observed across the polymeric chains and their fit to the electron density. The red, orange, yellow and green segments of the lower bar indicate the fraction of residues that contain outliers for ≥ 3 , 2, 1 and 0 types of geometric quality criteria respectively. A grey segment represents the fraction of residues that are not modelled. The numeric value for each fraction is indicated below the corresponding segment, with a dot representing fractions $\leq 5\%$. The upper red bar (where present) indicates the fraction of residues that have poor fit to the electron density. The numeric value is given above the bar.

Mol	Chain	Length	Quality of chain
1	A	330	
1	B	330	

2 Entry composition [i](#)

There are 3 unique types of molecules in this entry. The entry contains 4815 atoms, of which 0 are hydrogens and 0 are deuteriums.

In the tables below, the ZeroOcc column contains the number of atoms modelled with zero occupancy, the AltConf column contains the number of residues with at least one atom in alternate conformation and the Trace column contains the number of residues modelled with at most 2 atoms.

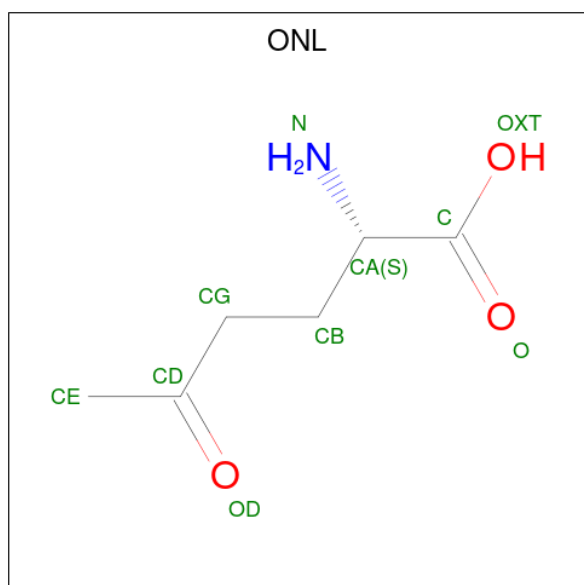
- Molecule 1 is a protein called Glutaminase 1.

Mol	Chain	Residues	Atoms						ZeroOcc	AltConf	Trace
1	A	290	Total	C	N	O	S	Se	0	1	0
			2238	1434	368	419	6	11			
1	B	292	Total	C	N	O	S	Se	0	1	0
			2262	1452	371	422	6	11			

There are 6 discrepancies between the modelled and reference sequences:

Chain	Residue	Modelled	Actual	Comment	Reference
A	-2	SER	-	expression tag	UNP O31465
A	-1	ASN	-	expression tag	UNP O31465
A	0	ALA	-	expression tag	UNP O31465
B	-2	SER	-	expression tag	UNP O31465
B	-1	ASN	-	expression tag	UNP O31465
B	0	ALA	-	expression tag	UNP O31465

- Molecule 2 is 5-OXO-L-NORLEUCINE (three-letter code: ONL) (formula: $C_6H_{11}NO_3$).



Mol	Chain	Residues	Atoms				ZeroOcc	AltConf
2	A	1	Total	C	N	O	0	0
			10	6	1	3		
2	B	1	Total	C	N	O	0	0
			10	6	1	3		

- Molecule 3 is water.

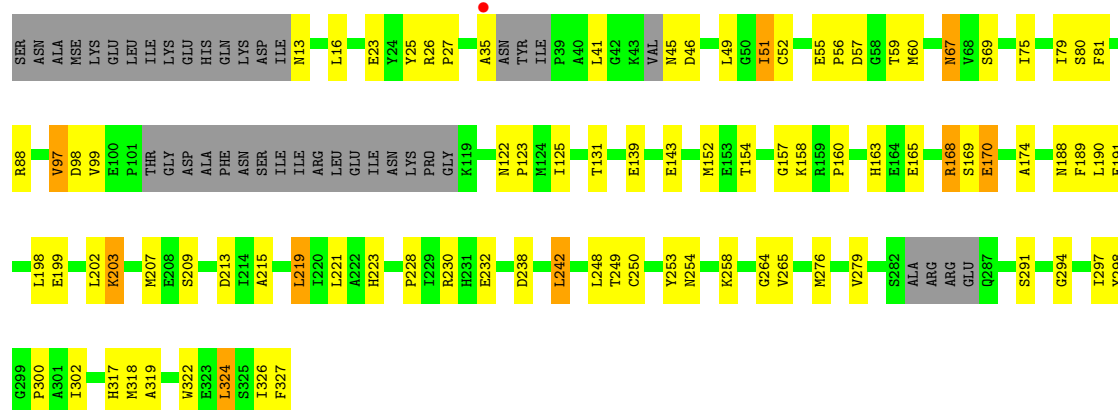
Mol	Chain	Residues	Atoms		ZeroOcc	AltConf
3	A	140	Total	O	0	0
			140	140		
3	B	155	Total	O	0	0
			155	155		

3 Residue-property plots

These plots are drawn for all protein, RNA, DNA and oligosaccharide chains in the entry. The first graphic for a chain summarises the proportions of the various outlier classes displayed in the second graphic. The second graphic shows the sequence view annotated by issues in geometry and electron density. Residues are color-coded according to the number of geometric quality criteria for which they contain at least one outlier: green = 0, yellow = 1, orange = 2 and red = 3 or more. A red dot above a residue indicates a poor fit to the electron density ($RSRZ > 2$). Stretches of 2 or more consecutive residues without any outlier are shown as a green connector. Residues present in the sample, but not in the model, are shown in grey.

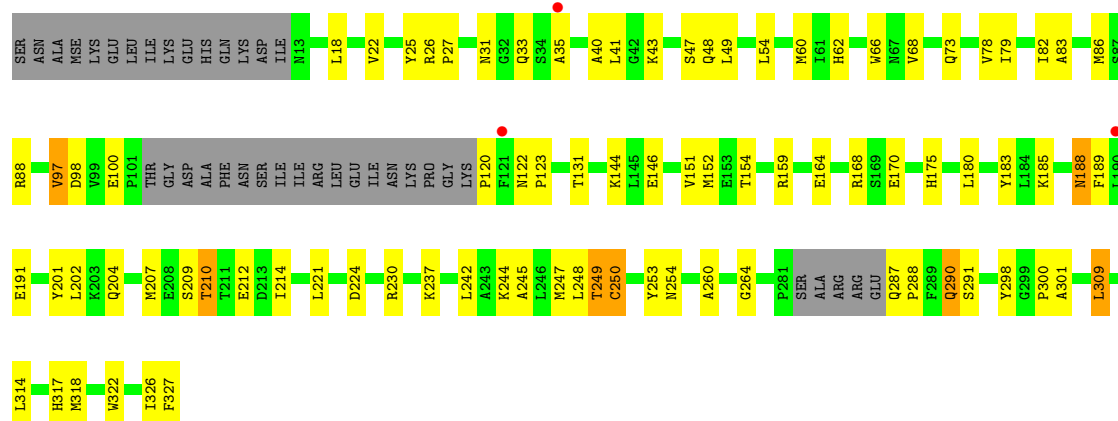
• Molecule 1: Glutaminase 1

Chain A: 



• Molecule 1: Glutaminase 1

Chain B: 



4 Data and refinement statistics

Property	Value	Source
Space group	P 21 21 2	Depositor
Cell constants a, b, c, α , β , γ	71.25Å 184.70Å 51.42Å 90.00° 90.00° 90.00°	Depositor
Resolution (Å)	34.52 – 2.29 34.52 – 2.29	Depositor EDS
% Data completeness (in resolution range)	82.9 (34.52-2.29) 82.9 (34.52-2.29)	Depositor EDS
R_{merge}	0.14	Depositor
R_{sym}	(Not available)	Depositor
$\langle I/\sigma(I) \rangle$ ¹	1.26 (at 2.29Å)	Xtriage
Refinement program	REFMAC 5.2.0019	Depositor
R, R_{free}	0.174 , 0.248 0.186 , 0.253	Depositor DCC
R_{free} test set	1317 reflections (5.05%)	wwPDB-VP
Wilson B-factor (Å ²)	29.1	Xtriage
Anisotropy	0.220	Xtriage
Bulk solvent k_{sol} (e/Å ³), B_{sol} (Å ²)	0.35 , 43.4	EDS
L-test for twinning ²	$\langle L \rangle = 0.49$, $\langle L^2 \rangle = 0.33$	Xtriage
Estimated twinning fraction	No twinning to report.	Xtriage
F_o, F_c correlation	0.95	EDS
Total number of atoms	4815	wwPDB-VP
Average B, all atoms (Å ²)	32.0	wwPDB-VP

Xtriage's analysis on translational NCS is as follows: *The analyses of the Patterson function reveals a significant off-origin peak that is 40.02 % of the origin peak, indicating pseudo-translational symmetry. The chance of finding a peak of this or larger height randomly in a structure without pseudo-translational symmetry is equal to 2.9115e-04. The detected translational NCS is most likely also responsible for the elevated intensity ratio.*

¹Intensities estimated from amplitudes.

²Theoretical values of $\langle |L| \rangle$, $\langle L^2 \rangle$ for acentric reflections are 0.5, 0.333 respectively for untwinned datasets, and 0.375, 0.2 for perfectly twinned datasets.

5 Model quality

5.1 Standard geometry

Bond lengths and bond angles in the following residue types are not validated in this section: ONL

The Z score for a bond length (or angle) is the number of standard deviations the observed value is removed from the expected value. A bond length (or angle) with $|Z| > 5$ is considered an outlier worth inspection. RMSZ is the root-mean-square of all Z scores of the bond lengths (or angles).

Mol	Chain	Bond lengths		Bond angles	
		RMSZ	$\# Z > 5$	RMSZ	$\# Z > 5$
1	A	0.84	1/2281 (0.0%)	0.83	4/3071 (0.1%)
1	B	0.90	0/2308	0.82	1/3112 (0.0%)
All	All	0.87	1/4589 (0.0%)	0.82	5/6183 (0.1%)

Chiral center outliers are detected by calculating the chiral volume of a chiral center and verifying if the center is modelled as a planar moiety or with the opposite hand. A planarity outlier is detected by checking planarity of atoms in a peptide group, atoms in a mainchain group or atoms of a sidechain that are expected to be planar.

Mol	Chain	#Chirality outliers	#Planarity outliers
1	A	0	1

All (1) bond length outliers are listed below:

Mol	Chain	Res	Type	Atoms	Z	Observed(Å)	Ideal(Å)
1	A	23	GLU	CG-CD	6.09	1.61	1.51

All (5) bond angle outliers are listed below:

Mol	Chain	Res	Type	Atoms	Z	Observed(°)	Ideal(°)
1	A	170	GLU	N-CA-C	5.83	126.74	111.00
1	A	248	LEU	CB-CG-CD2	-5.38	101.86	111.00
1	A	190	LEU	CA-CB-CG	5.24	127.34	115.30
1	A	198	LEU	CB-CG-CD2	-5.12	102.30	111.00
1	B	88	ARG	NE-CZ-NH2	-5.03	117.78	120.30

There are no chirality outliers.

All (1) planarity outliers are listed below:

Mol	Chain	Res	Type	Group
1	A	169	SER	Peptide

5.2 Too-close contacts ⓘ

In the following table, the Non-H and H(model) columns list the number of non-hydrogen atoms and hydrogen atoms in the chain respectively. The H(added) column lists the number of hydrogen atoms added and optimized by MolProbity. The Clashes column lists the number of clashes within the asymmetric unit, whereas Symm-Clashes lists symmetry-related clashes.

Mol	Chain	Non-H	H(model)	H(added)	Clashes	Symm-Clashes
1	A	2238	0	2201	73	0
1	B	2262	0	2231	71	0
2	A	10	0	9	3	0
2	B	10	0	8	2	0
3	A	140	0	0	16	0
3	B	155	0	0	12	0
All	All	4815	0	4449	138	0

The all-atom clashscore is defined as the number of clashes found per 1000 atoms (including hydrogen atoms). The all-atom clashscore for this structure is 15.

All (138) close contacts within the same asymmetric unit are listed below, sorted by their clash magnitude.

Atom-1	Atom-2	Interatomic distance (Å)	Clash overlap (Å)
1:A:253:TYR:OH	2:A:401:ONL:HE2	1.30	1.26
1:B:98:ASP:HB3	3:B:437:HOH:O	1.56	1.05
1:A:168:ARG:HG2	1:A:168:ARG:HH11	0.90	1.02
1:A:249:THR:HB	3:A:503:HOH:O	1.59	1.00
1:A:57:ASP:OD1	1:A:59:THR:HG23	1.64	0.98
1:A:168:ARG:HG2	1:A:168:ARG:NH1	1.66	0.93
1:A:253:TYR:OH	2:A:401:ONL:CE	2.17	0.93
1:B:154:THR:HG21	3:B:538:HOH:O	1.68	0.92
1:A:168:ARG:HH11	1:A:168:ARG:CG	1.81	0.92
1:A:253:TYR:HH	2:A:401:ONL:HE2	1.34	0.91
1:A:249:THR:HG22	1:A:250[B]:CYS:SG	2.11	0.90
1:A:249:THR:CG2	3:A:503:HOH:O	2.20	0.89
1:A:98:ASP:HB3	3:A:452:HOH:O	1.74	0.88
1:A:249:THR:CB	3:A:503:HOH:O	2.18	0.88
1:B:79:ILE:HG13	1:B:152:MSE:HE1	1.57	0.84
1:A:188:ASN:HB3	3:A:478:HOH:O	1.78	0.84
1:A:254:ASN:HB2	3:A:412:HOH:O	1.79	0.83

Continued on next page...

Continued from previous page...

Atom-1	Atom-2	Interatomic distance (Å)	Clash overlap (Å)
1:A:13:ASN:ND2	1:A:16:LEU:HD12	1.97	0.78
1:A:327:PHE:HE2	1:B:248:LEU:HD22	1.48	0.78
1:A:157:GLY:HA2	1:A:230:ARG:HH22	1.49	0.77
1:B:25:TYR:OH	1:B:317:HIS:HD2	1.69	0.76
1:A:163:HIS:CE1	1:A:165:GLU:HB3	2.22	0.74
1:A:168:ARG:NH1	1:A:168:ARG:CG	2.47	0.73
1:B:210:THR:HG22	1:B:212:GLU:H	1.53	0.73
1:A:25:TYR:OH	1:A:317:HIS:HD2	1.72	0.73
1:A:249:THR:HG21	3:A:503:HOH:O	1.86	0.71
1:A:13:ASN:HD22	1:A:16:LEU:HD12	1.55	0.71
1:A:152:MSE:HE3	1:A:207:MSE:CE	2.21	0.71
1:B:221:LEU:HD13	1:B:247:MSE:HE1	1.73	0.71
1:A:88:ARG:CZ	3:A:455:HOH:O	2.41	0.69
1:B:245:ALA:O	1:B:249:THR:HB	1.92	0.69
1:A:219:LEU:HD13	1:A:228:PRO:HG2	1.74	0.69
1:A:152:MSE:HE3	1:A:207:MSE:HE1	1.76	0.68
1:A:327:PHE:CE2	1:B:248:LEU:HD22	2.28	0.67
1:B:249:THR:HG23	1:B:250[B]:CYS:SG	2.34	0.67
1:B:254:ASN:HB2	3:B:553:HOH:O	1.93	0.66
1:B:168:ARG:HD3	3:B:449:HOH:O	1.96	0.65
1:A:152:MSE:CE	1:A:207:MSE:HE1	2.26	0.65
1:B:22:VAL:HG13	1:B:49:LEU:HD12	1.78	0.65
1:A:79:ILE:HG13	1:A:152:MSE:HE1	1.79	0.64
1:B:224:ASP:HB3	1:B:237:LYS:HG3	1.80	0.64
1:A:75:ILE:HG23	1:A:276:MSE:HE2	1.79	0.64
1:B:287:GLN:HB2	1:B:288:PRO:HD2	1.79	0.64
1:B:152:MSE:CE	1:B:207:MSE:HE1	2.28	0.64
1:B:253:TYR:OH	2:B:401:ONL:CE	2.46	0.63
1:B:48:GLN:HE22	1:B:68:VAL:HG21	1.64	0.63
1:B:79:ILE:HG21	1:B:152:MSE:HE2	1.79	0.63
1:B:290:GLN:H	1:B:290:GLN:CD	2.00	0.63
1:B:82:ILE:HG22	1:B:86:MSE:HE2	1.80	0.63
1:B:249:THR:HG21	3:B:488:HOH:O	1.99	0.62
1:A:122:ASN:HA	3:A:452:HOH:O	2.00	0.62
1:A:163:HIS:HE1	1:A:165:GLU:HB3	1.64	0.62
1:A:298:TYR:CZ	1:A:300:PRO:HG3	2.34	0.62
1:A:25:TYR:OH	1:A:317:HIS:CD2	2.54	0.61
1:B:249:THR:CG2	1:B:250[B]:CYS:SG	2.89	0.61
1:B:60:MSE:HE1	1:B:66:TRP:CZ3	2.36	0.61
1:B:18:LEU:O	1:B:22:VAL:HG23	2.00	0.61
1:A:79:ILE:HG21	1:A:152:MSE:CE	2.31	0.60

Continued on next page...

Continued from previous page...

Atom-1	Atom-2	Interatomic distance (Å)	Clash overlap (Å)
1:B:73:GLN:HB3	2:B:401:ONL:HG1	1.84	0.59
1:A:56:PRO:HG3	1:A:223:HIS:CE1	2.39	0.58
1:B:244:LYS:HA	1:B:247:MSE:HE3	1.83	0.58
1:A:51:ILE:HG13	1:A:52:CYS:N	2.18	0.57
1:A:67:ASN:O	1:A:67:ASN:ND2	2.37	0.57
1:A:326:ILE:HD12	1:B:326:ILE:HD12	1.84	0.57
1:A:26:ARG:NE	3:A:479:HOH:O	2.36	0.57
1:A:79:ILE:HG21	1:A:152:MSE:HE2	1.86	0.57
1:A:88:ARG:NE	3:A:455:HOH:O	2.37	0.56
1:B:210:THR:HG22	1:B:212:GLU:N	2.20	0.56
1:A:97:VAL:HG13	1:A:123:PRO:HD3	1.89	0.54
1:B:152:MSE:HE3	1:B:207:MSE:CE	2.37	0.54
1:B:31:ASN:HB2	1:B:309:LEU:HD11	1.89	0.54
1:B:120:PRO:N	1:B:189:PHE:CZ	2.76	0.54
1:B:68:VAL:HG11	1:B:298:TYR:CE2	2.43	0.53
1:A:209:SER:HB2	1:A:213:ASP:HB2	1.91	0.53
1:B:49:LEU:HD11	1:B:314:LEU:HD22	1.91	0.53
1:A:56:PRO:HG2	1:A:291:SER:HB3	1.90	0.53
1:B:79:ILE:HG21	1:B:152:MSE:CE	2.39	0.52
1:B:146:GLU:OE1	1:B:159:ARG:NH2	2.43	0.52
1:B:230:ARG:NH2	3:B:433:HOH:O	2.43	0.51
1:A:199:GLU:O	1:A:203:LYS:HB2	2.11	0.51
1:A:279:VAL:HG21	1:A:324:LEU:HG	1.93	0.51
1:A:57:ASP:OD1	1:A:57:ASP:C	2.49	0.51
1:B:301:ALA:O	3:B:461:HOH:O	2.19	0.50
1:B:35:ALA:HB3	1:B:41:LEU:HD23	1.93	0.50
1:B:201:TYR:O	1:B:204:GLN:HG2	2.11	0.50
1:A:81:PHE:HZ	1:A:242:LEU:HD13	1.76	0.49
1:B:40:ALA:HA	1:B:43:LYS:HE3	1.93	0.49
1:B:152:MSE:HE3	1:B:207:MSE:HE1	1.93	0.49
1:B:97:VAL:HG13	1:B:123:PRO:HD3	1.94	0.49
1:A:26:ARG:HB3	1:A:27:PRO:HD3	1.93	0.49
1:A:122:ASN:CA	3:A:452:HOH:O	2.58	0.49
1:B:22:VAL:HG13	1:B:49:LEU:CD1	2.42	0.49
1:A:81:PHE:CZ	1:A:242:LEU:HD13	2.47	0.49
1:B:144:LYS:NZ	3:B:517:HOH:O	2.30	0.49
1:B:260:ALA:O	1:B:327:PHE:HZ	1.96	0.49
1:A:131:THR:HG23	1:A:189:PHE:O	2.13	0.48
1:A:55:GLU:HB3	1:A:56:PRO:HD2	1.96	0.48
1:A:35:ALA:HB3	1:A:41:LEU:HD23	1.95	0.47
1:B:83:ALA:HA	1:B:86:MSE:CE	2.44	0.47

Continued on next page...

Continued from previous page...

Atom-1	Atom-2	Interatomic distance (Å)	Clash overlap (Å)
1:B:60:MSE:CE	1:B:62:HIS:ND1	2.78	0.47
1:A:13:ASN:ND2	1:A:16:LEU:CD1	2.76	0.47
1:A:327:PHE:HE2	1:B:248:LEU:CD2	2.23	0.47
1:B:264:GLY:O	1:B:326:ILE:HG13	2.15	0.47
1:B:26:ARG:HB3	1:B:27:PRO:HD3	1.96	0.46
1:B:318:MSE:HE3	1:B:322:TRP:HZ3	1.79	0.46
1:B:60:MSE:HE3	1:B:62:HIS:ND1	2.31	0.46
1:A:215:ALA:O	1:A:294:GLY:HA3	2.15	0.45
1:B:83:ALA:HA	1:B:86:MSE:HE3	1.99	0.45
1:B:48:GLN:O	1:B:300:PRO:HD2	2.17	0.45
1:A:319:ALA:HA	1:A:324:LEU:HB2	1.98	0.45
1:A:154:THR:HG21	3:A:475:HOH:O	2.17	0.44
1:A:98:ASP:C	3:A:452:HOH:O	2.56	0.44
1:B:122:ASN:ND2	1:B:250[B]:CYS:SG	2.89	0.44
1:B:168:ARG:NH2	3:B:526:HOH:O	2.50	0.43
1:A:264:GLY:O	1:A:326:ILE:HG12	2.19	0.43
1:B:131:THR:HG23	1:B:189:PHE:O	2.18	0.43
1:A:318:MSE:HE3	1:A:322:TRP:HZ3	1.84	0.42
1:B:25:TYR:OH	1:B:317:HIS:CD2	2.60	0.42
1:B:86:MSE:HE1	1:B:151:VAL:CG1	2.49	0.42
1:A:139:GLU:H	1:A:143:GLU:CD	2.21	0.42
1:B:62:HIS:HB2	1:B:66:TRP:CG	2.54	0.42
1:B:188:ASN:OD1	3:B:518:HOH:O	2.22	0.42
1:B:209:SER:OG	1:B:214:ILE:HG23	2.19	0.42
1:B:98:ASP:O	1:B:123:PRO:HD3	2.20	0.41
1:A:45:ASN:N	3:A:470:HOH:O	2.53	0.41
1:A:51:ILE:HD12	1:A:297:ILE:HG12	2.01	0.41
1:A:122:ASN:CB	3:A:452:HOH:O	2.68	0.41
1:B:188:ASN:HD22	1:B:188:ASN:HA	1.64	0.41
1:A:152:MSE:HG2	1:A:160:PRO:HG3	2.02	0.41
1:B:287:GLN:NE2	3:B:445:HOH:O	2.53	0.41
1:A:170:GLU:HB3	1:A:202:LEU:HD13	2.02	0.41
1:B:60:MSE:HE2	1:B:62:HIS:CE1	2.56	0.41
1:A:170:GLU:O	1:A:174:ALA:HB2	2.20	0.41
1:A:230:ARG:HD3	1:A:232:GLU:OE2	2.20	0.41
1:A:258:LYS:HG3	1:B:100:GLU:OE1	2.20	0.41
1:A:326:ILE:HD12	1:B:326:ILE:CD1	2.51	0.40
1:B:175:HIS:CD2	3:B:441:HOH:O	2.74	0.40
1:B:180:LEU:O	1:B:183:TYR:HB3	2.22	0.40

There are no symmetry-related clashes.

5.3 Torsion angles

5.3.1 Protein backbone

In the following table, the Percentiles column shows the percent Ramachandran outliers of the chain as a percentile score with respect to all X-ray entries followed by that with respect to entries of similar resolution.

The Analysed column shows the number of residues for which the backbone conformation was analysed, and the total number of residues.

Mol	Chain	Analysed	Favoured	Allowed	Outliers	Percentiles	
1	A	281/330 (85%)	271 (96%)	10 (4%)	0	100	100
1	B	287/330 (87%)	279 (97%)	8 (3%)	0	100	100
All	All	568/660 (86%)	550 (97%)	18 (3%)	0	100	100

There are no Ramachandran outliers to report.

5.3.2 Protein sidechains

In the following table, the Percentiles column shows the percent sidechain outliers of the chain as a percentile score with respect to all X-ray entries followed by that with respect to entries of similar resolution.

The Analysed column shows the number of residues for which the sidechain conformation was analysed, and the total number of residues.

Mol	Chain	Analysed	Rotameric	Outliers	Percentiles	
1	A	237/260 (91%)	216 (91%)	21 (9%)	8	10
1	B	240/260 (92%)	221 (92%)	19 (8%)	10	13
All	All	477/520 (92%)	437 (92%)	40 (8%)	9	11

All (40) residues with a non-rotameric sidechain are listed below:

Mol	Chain	Res	Type
1	A	46	ASP
1	A	49	LEU
1	A	51	ILE
1	A	60	MSE
1	A	67	ASN
1	A	69	SER
1	A	80	SER
1	A	97	VAL

Continued on next page...

Continued from previous page...

Mol	Chain	Res	Type
1	A	99	VAL
1	A	125	ILE
1	A	158	LYS
1	A	168	ARG
1	A	191	GLU
1	A	203	LYS
1	A	219	LEU
1	A	221	LEU
1	A	238	ASP
1	A	242	LEU
1	A	265	VAL
1	A	302	ILE
1	A	324	LEU
1	B	33	GLN
1	B	47	SER
1	B	54	LEU
1	B	78	VAL
1	B	97	VAL
1	B	164	GLU
1	B	170	GLU
1	B	185	LYS
1	B	188	ASN
1	B	191	GLU
1	B	202	LEU
1	B	210	THR
1	B	242	LEU
1	B	249	THR
1	B	250[A]	CYS
1	B	250[B]	CYS
1	B	290	GLN
1	B	291	SER
1	B	309	LEU

Sometimes sidechains can be flipped to improve hydrogen bonding and reduce clashes. All (10) such sidechains are listed below:

Mol	Chain	Res	Type
1	A	13	ASN
1	A	31	ASN
1	A	233	GLN
1	A	254	ASN
1	A	317	HIS
1	B	48	GLN

Continued on next page...

Continued from previous page...

Mol	Chain	Res	Type
1	B	175	HIS
1	B	188	ASN
1	B	254	ASN
1	B	317	HIS

5.3.3 RNA [i](#)

There are no RNA molecules in this entry.

5.4 Non-standard residues in protein, DNA, RNA chains [i](#)

There are no non-standard protein/DNA/RNA residues in this entry.

5.5 Carbohydrates [i](#)

There are no oligosaccharides in this entry.

5.6 Ligand geometry [i](#)

2 ligands are modelled in this entry.

In the following table, the Counts columns list the number of bonds (or angles) for which Mogul statistics could be retrieved, the number of bonds (or angles) that are observed in the model and the number of bonds (or angles) that are defined in the Chemical Component Dictionary. The Link column lists molecule types, if any, to which the group is linked. The Z score for a bond length (or angle) is the number of standard deviations the observed value is removed from the expected value. A bond length (or angle) with $|Z| > 2$ is considered an outlier worth inspection. RMSZ is the root-mean-square of all Z scores of the bond lengths (or angles).

Mol	Type	Chain	Res	Link	Bond lengths			Bond angles		
					Counts	RMSZ	$\# Z > 2$	Counts	RMSZ	$\# Z > 2$
2	ONL	A	401	1	8,9,9	2.04	1 (12%)	8,11,11	1.36	1 (12%)
2	ONL	B	401	1	8,9,9	1.82	1 (12%)	8,11,11	1.26	1 (12%)

In the following table, the Chirals column lists the number of chiral outliers, the number of chiral centers analysed, the number of these observed in the model and the number defined in the Chemical Component Dictionary. Similar counts are reported in the Torsion and Rings columns. '-' means no outliers of that kind were identified.

Mol	Type	Chain	Res	Link	Chirals	Torsions	Rings
2	ONL	A	401	1	-	7/9/9/9	-
2	ONL	B	401	1	-	6/9/9/9	-

All (2) bond length outliers are listed below:

Mol	Chain	Res	Type	Atoms	Z	Observed(Å)	Ideal(Å)
2	A	401	ONL	CE-CD	-5.49	1.30	1.49
2	B	401	ONL	CE-CD	-4.64	1.33	1.49

All (2) bond angle outliers are listed below:

Mol	Chain	Res	Type	Atoms	Z	Observed(°)	Ideal(°)
2	B	401	ONL	CG-CB-CA	-2.88	107.26	113.86
2	A	401	ONL	CG-CB-CA	-2.55	108.01	113.86

There are no chirality outliers.

All (13) torsion outliers are listed below:

Mol	Chain	Res	Type	Atoms
2	A	401	ONL	N-CA-CB-CG
2	A	401	ONL	CA-CB-CG-CD
2	B	401	ONL	C-CA-CB-CG
2	B	401	ONL	CA-CB-CG-CD
2	B	401	ONL	OD-CD-CG-CB
2	B	401	ONL	CE-CD-CG-CB
2	A	401	ONL	OXT-C-CA-N
2	B	401	ONL	OXT-C-CA-N
2	A	401	ONL	OD-CD-CG-CB
2	A	401	ONL	CE-CD-CG-CB
2	A	401	ONL	O-C-CA-N
2	A	401	ONL	C-CA-CB-CG
2	B	401	ONL	N-CA-CB-CG

There are no ring outliers.

2 monomers are involved in 5 short contacts:

Mol	Chain	Res	Type	Clashes	Symm-Clashes
2	A	401	ONL	3	0
2	B	401	ONL	2	0

5.7 Other polymers [i](#)

There are no such residues in this entry.

5.8 Polymer linkage issues [i](#)

There are no chain breaks in this entry.

6 Fit of model and data [i](#)

6.1 Protein, DNA and RNA chains [i](#)

In the following table, the column labelled ‘#RSRZ> 2’ contains the number (and percentage) of RSRZ outliers, followed by percent RSRZ outliers for the chain as percentile scores relative to all X-ray entries and entries of similar resolution. The OWAB column contains the minimum, median, 95th percentile and maximum values of the occupancy-weighted average B-factor per residue. The column labelled ‘Q< 0.9’ lists the number of (and percentage) of residues with an average occupancy less than 0.9.

Mol	Chain	Analysed	<RSRZ>	#RSRZ>2	OWAB(Å ²)	Q<0.9
1	A	279/330 (84%)	-0.22	1 (0%) 89 89	15, 29, 53, 73	1 (0%)
1	B	281/330 (85%)	-0.18	3 (1%) 77 78	16, 30, 57, 70	1 (0%)
All	All	560/660 (84%)	-0.20	4 (0%) 84 84	15, 30, 55, 73	2 (0%)

All (4) RSRZ outliers are listed below:

Mol	Chain	Res	Type	RSRZ
1	A	35	ALA	2.9
1	B	190	LEU	2.2
1	B	121	PHE	2.2
1	B	35	ALA	2.1

6.2 Non-standard residues in protein, DNA, RNA chains [i](#)

There are no non-standard protein/DNA/RNA residues in this entry.

6.3 Carbohydrates [i](#)

There are no monosaccharides in this entry.

6.4 Ligands [i](#)

In the following table, the Atoms column lists the number of modelled atoms in the group and the number defined in the chemical component dictionary. The B-factors column lists the minimum, median, 95th percentile and maximum values of B factors of atoms in the group. The column labelled ‘Q< 0.9’ lists the number of atoms with occupancy less than 0.9.

Mol	Type	Chain	Res	Atoms	RSCC	RSR	B-factors(Å ²)	Q<0.9
2	ONL	B	401	10/10	0.91	0.10	39,44,45,45	0

Continued on next page...

Continued from previous page...

Mol	Type	Chain	Res	Atoms	RSCC	RSR	B-factors(\AA^2)	Q<0.9
2	ONL	A	401	10/10	0.93	0.07	37,40,41,41	0

6.5 Other polymers [i](#)

There are no such residues in this entry.