



Full wwPDB X-ray Structure Validation Report ⓘ

Nov 6, 2025 – 12:08 PM EST

PDB ID : 9BRL / pdb_00009bri
Title : Crystal Structure of Human G Protein-Coupled Receptor Kinase 5 in Complex with GRL080-22
Authors : Chen, Y.; Tesmer, J.J.G.
Deposited on : 2024-05-11
Resolution : 2.73 Å(reported)

This is a Full wwPDB X-ray Structure Validation Report for a publicly released PDB entry.

We welcome your comments at validation@mail.wwpdb.org

A user guide is available at

<https://www.wwpdb.org/validation/2017/XrayValidationReportHelp>

with specific help available everywhere you see the ⓘ symbol.

The types of validation reports are described at

<http://www.wwpdb.org/validation/2017/FAQs#types>.

The following versions of software and data (see [references ⓘ](#)) were used in the production of this report:

MolProbity : 4-5-2 with Phenix2.0
Mogul : 2022.3.0, CSD as543be (2022)
Xtriage (Phenix) : 2.0
EDS : 3.0
buster-report : 1.1.7 (2018)
Percentile statistics : 20231227.v01 (using entries in the PDB archive December 27th 2023)
CCP4 : 9.0.010 (Gargrove)
Density-Fitness : 1.0.12
Ideal geometry (proteins) : Engh & Huber (2001)
Ideal geometry (DNA, RNA) : Parkinson et al. (1996)
Validation Pipeline (wwPDB-VP) : 2.46

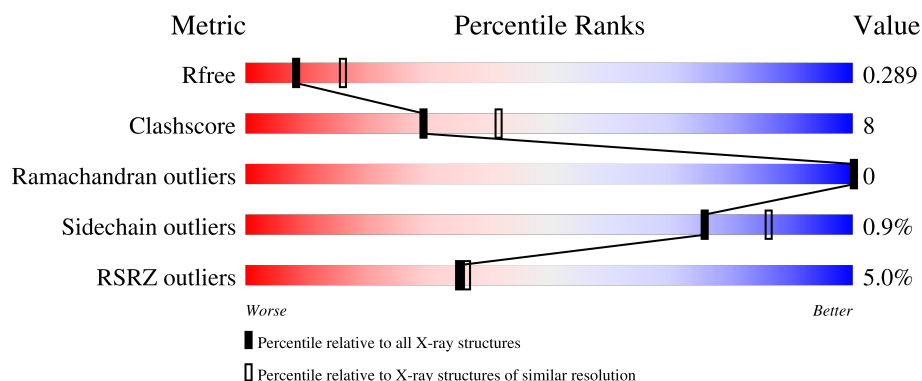
1 Overall quality at a glance

The following experimental techniques were used to determine the structure:

X-RAY DIFFRACTION

The reported resolution of this entry is 2.73 Å.

Percentile scores (ranging between 0-100) for global validation metrics of the entry are shown in the following graphic. The table shows the number of entries on which the scores are based.



Metric	Whole archive (#Entries)	Similar resolution (#Entries, resolution range(Å))
R_{free}	164625	1649 (2.76-2.72)
Clashscore	180529	1744 (2.76-2.72)
Ramachandran outliers	177936	1710 (2.76-2.72)
Sidechain outliers	177891	1711 (2.76-2.72)
RSRZ outliers	164620	1649 (2.76-2.72)

The table below summarises the geometric issues observed across the polymeric chains and their fit to the electron density. The red, orange, yellow and green segments of the lower bar indicate the fraction of residues that contain outliers for ≥ 3 , 2, 1 and 0 types of geometric quality criteria respectively. A grey segment represents the fraction of residues that are not modelled. The numeric value for each fraction is indicated below the corresponding segment, with a dot representing fractions $\leq 5\%$. The upper red bar (where present) indicates the fraction of residues that have poor fit to the electron density. The numeric value is given above the bar.

Mol	Chain	Length	Quality of chain
1	A	598	

2 Entry composition

There are 3 unique types of molecules in this entry. The entry contains 8221 atoms, of which 4074 are hydrogens and 0 are deuteriums.

In the tables below, the ZeroOcc column contains the number of atoms modelled with zero occupancy, the AltConf column contains the number of residues with at least one atom in alternate conformation and the Trace column contains the number of residues modelled with at most 2 atoms.

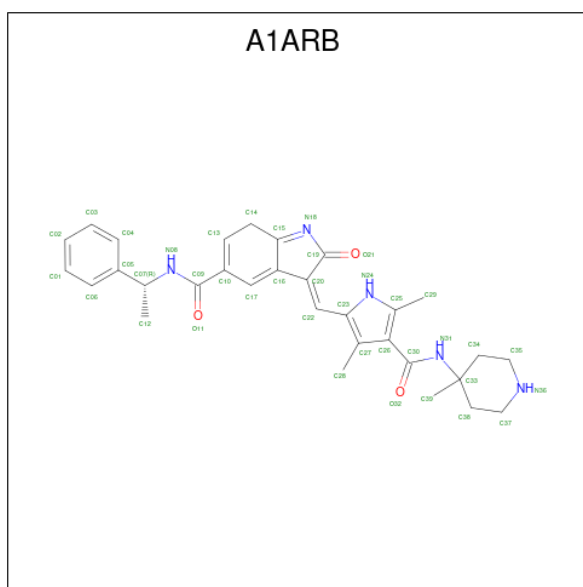
- Molecule 1 is a protein called G protein-coupled receptor kinase 5.

Mol	Chain	Residues	Atoms						ZeroOcc	AltConf	Trace
1	A	501	Total	C	H	N	O	S	0	0	0
			8119	2593	4041	706	751	28			

There are 9 discrepancies between the modelled and reference sequences:

Chain	Residue	Modelled	Actual	Comment	Reference
A	311	ASN	ASP	engineered mutation	UNP P34947
A	591	VAL	-	expression tag	UNP P34947
A	592	ASP	-	expression tag	UNP P34947
A	593	HIS	-	expression tag	UNP P34947
A	594	HIS	-	expression tag	UNP P34947
A	595	HIS	-	expression tag	UNP P34947
A	596	HIS	-	expression tag	UNP P34947
A	597	HIS	-	expression tag	UNP P34947
A	598	HIS	-	expression tag	UNP P34947

- Molecule 2 is (3Z)-3-({3,5-dimethyl-4-[(4-methylpiperidin-4-yl)carbamoyl]-1H-pyrrol-2-yl}methylidene)-2-oxo-N-[(1R)-1-phenylethyl]-3,7-dihydro-2H-indole-5-carboxamide (CCD ID: A1ARB) (formula: C₃₁H₃₅N₅O₃) (labeled as "Ligand of Interest" by depositor).



Mol	Chain	Residues	Atoms					ZeroOcc	AltConf
2	A	1	Total	C	H	N	O	0	0
			72	31	33	5	3		

- Molecule 3 is water.

Mol	Chain	Residues	Atoms	ZeroOcc	AltConf
3	A	30	Total O 30 30	0	0

4 Data and refinement statistics

Property	Value	Source
Space group	P 41 21 2	Depositor
Cell constants a, b, c, α , β , γ	137.53Å 137.53Å 70.78Å 90.00° 90.00° 90.00°	Depositor
Resolution (Å)	24.66 – 2.73 24.66 – 2.73	Depositor EDS
% Data completeness (in resolution range)	100.0 (24.66-2.73) 99.8 (24.66-2.73)	Depositor EDS
R_{merge}	(Not available)	Depositor
R_{sym}	(Not available)	Depositor
$\langle I/\sigma(I) \rangle$ ¹	2.10 (at 2.72Å)	Xtriage
Refinement program	PHENIX 1.21.1_5286	Depositor
R, R_{free}	0.226 , 0.275 0.239 , 0.289	Depositor DCC
R_{free} test set	19403 reflections (12.15%)	wwPDB-VP
Wilson B-factor (Å ²)	62.9	Xtriage
Anisotropy	0.086	Xtriage
Bulk solvent k_{sol} (e/Å ³), B_{sol} (Å ²)	0.36 , 48.8	EDS
L-test for twinning ²	$\langle L \rangle = 0.51$, $\langle L^2 \rangle = 0.34$	Xtriage
Estimated twinning fraction	No twinning to report.	Xtriage
F_o, F_c correlation	0.93	EDS
Total number of atoms	8221	wwPDB-VP
Average B, all atoms (Å ²)	85.0	wwPDB-VP

Xtriage's analysis on translational NCS is as follows: *The largest off-origin peak in the Patterson function is 3.76% of the height of the origin peak. No significant pseudotranslation is detected.*

¹Intensities estimated from amplitudes.

²Theoretical values of $\langle |L| \rangle$, $\langle L^2 \rangle$ for acentric reflections are 0.5, 0.333 respectively for untwinned datasets, and 0.375, 0.2 for perfectly twinned datasets.

5 Model quality

5.1 Standard geometry

Bond lengths and bond angles in the following residue types are not validated in this section: A1ARB

The Z score for a bond length (or angle) is the number of standard deviations the observed value is removed from the expected value. A bond length (or angle) with $|Z| > 5$ is considered an outlier worth inspection. RMSZ is the root-mean-square of all Z scores of the bond lengths (or angles).

Mol	Chain	Bond lengths		Bond angles	
		RMSZ	$\# Z > 5$	RMSZ	$\# Z > 5$
1	A	0.13	0/4168	0.30	0/5607

There are no bond length outliers.

There are no bond angle outliers.

There are no chirality outliers.

There are no planarity outliers.

5.2 Too-close contacts

In the following table, the Non-H and H(model) columns list the number of non-hydrogen atoms and hydrogen atoms in the chain respectively. The H(added) column lists the number of hydrogen atoms added and optimized by MolProbity. The Clashes column lists the number of clashes within the asymmetric unit, whereas Symm-Clashes lists symmetry-related clashes.

Mol	Chain	Non-H	H(model)	H(added)	Clashes	Symm-Clashes
1	A	4078	4041	4048	69	0
2	A	39	33	0	0	0
3	A	30	0	0	3	0
All	All	4147	4074	4048	69	0

The all-atom clashscore is defined as the number of clashes found per 1000 atoms (including hydrogen atoms). The all-atom clashscore for this structure is 8.

All (69) close contacts within the same asymmetric unit are listed below, sorted by their clash magnitude.

Atom-1	Atom-2	Interatomic distance (Å)	Clash overlap (Å)
1:A:216:ARG:NH2	1:A:218:GLU:HG2	2.09	0.67

Continued on next page...

Continued from previous page...

Atom-1	Atom-2	Interatomic distance (Å)	Clash overlap (Å)
1:A:216:ARG:NH1	1:A:258:ALA:HB2	2.09	0.67
1:A:92:VAL:HG11	1:A:460:MET:SD	2.37	0.65
1:A:43:GLU:OE2	3:A:701:HOH:O	2.16	0.61
1:A:80:TYR:HD1	1:A:149:VAL:HG13	1.64	0.61
1:A:28:LYS:HD2	1:A:28:LYS:H	1.68	0.58
1:A:240:LYS:HE3	1:A:305:GLU:CD	2.30	0.57
1:A:306:ASN:ND2	1:A:336:ILE:O	2.39	0.55
1:A:187:ARG:NH2	3:A:702:HOH:O	2.41	0.54
1:A:244:GLN:NE2	3:A:704:HOH:O	2.41	0.54
1:A:329:ASP:O	1:A:330:LEU:HD12	2.08	0.53
1:A:141:LEU:HD23	1:A:142:PHE:CE1	2.44	0.53
1:A:177:GLU:OE2	1:A:508:SER:OG	2.22	0.52
1:A:240:LYS:O	1:A:240:LYS:HD3	2.11	0.51
1:A:309:TYR:HE1	1:A:329:ASP:O	1.95	0.50
1:A:349:VAL:HG11	1:A:394:ARG:HG3	1.92	0.50
1:A:80:TYR:CE1	1:A:118:ILE:HG23	2.48	0.49
1:A:240:LYS:HE3	1:A:305:GLU:OE1	2.12	0.49
1:A:103:LYS:O	1:A:107:THR:HG23	2.13	0.48
1:A:28:LYS:HD2	1:A:28:LYS:N	2.28	0.48
1:A:223:LYS:N	1:A:223:LYS:HD3	2.27	0.48
1:A:145:CYS:O	1:A:149:VAL:HG23	2.14	0.48
1:A:95:ASP:HA	1:A:98:LEU:HD23	1.95	0.47
1:A:59:LYS:HE2	1:A:509:ILE:HD11	1.96	0.47
1:A:390:GLU:HG2	1:A:392:VAL:HG13	1.95	0.47
1:A:392:VAL:HG11	1:A:400:ARG:HH21	1.78	0.46
1:A:45:LEU:O	1:A:49:ILE:HG12	2.16	0.46
1:A:395:GLU:OE1	1:A:395:GLU:N	2.41	0.46
1:A:238:LEU:HD21	1:A:330:LEU:HD13	1.98	0.45
1:A:280:ASN:N	1:A:281:PRO:CA	2.80	0.45
1:A:392:VAL:HG11	1:A:400:ARG:NH2	2.31	0.45
1:A:275:ILE:HD11	1:A:378:MET:HG2	1.99	0.45
1:A:432:LEU:HG	1:A:442:VAL:HG22	1.98	0.45
1:A:216:ARG:CZ	1:A:218:GLU:HG2	2.47	0.44
1:A:118:ILE:HG22	1:A:121:VAL:HG12	1.98	0.44
1:A:429:LYS:HE3	1:A:429:LYS:HA	1.99	0.44
1:A:92:VAL:HG12	1:A:92:VAL:O	2.16	0.44
1:A:90:TYR:CZ	1:A:98:LEU:HD12	2.52	0.44
1:A:92:VAL:O	1:A:92:VAL:CG1	2.66	0.44
1:A:216:ARG:HH21	1:A:218:GLU:HG2	1.80	0.43
1:A:316:ASN:O	1:A:328:SER:OG	2.32	0.43
1:A:116:VAL:O	1:A:116:VAL:HG23	2.18	0.43

Continued on next page...

Continued from previous page...

Atom-1	Atom-2	Interatomic distance (Å)	Clash overlap (Å)
1:A:182:THR:HG23	1:A:184:ASN:H	1.83	0.43
1:A:219:LYS:HG3	1:A:258:ALA:HA	2.00	0.43
1:A:38:HIS:NE2	1:A:538:ASN:O	2.45	0.43
1:A:68:ARG:O	1:A:72:GLU:HG2	2.19	0.43
1:A:95:ASP:HA	1:A:98:LEU:CD2	2.49	0.43
1:A:92:VAL:HG13	1:A:455:ARG:HG2	2.01	0.42
1:A:223:LYS:NZ	1:A:499:TYR:OH	2.48	0.42
1:A:106:MET:HG3	1:A:110:LEU:HD12	2.00	0.42
1:A:132:LYS:HE2	1:A:141:LEU:HD12	2.01	0.42
1:A:194:LYS:N	1:A:194:LYS:HD2	2.35	0.42
1:A:223:LYS:NZ	1:A:499:TYR:HE1	2.18	0.42
1:A:90:TYR:CE2	1:A:98:LEU:HD12	2.55	0.42
1:A:280:ASN:N	1:A:281:PRO:HA	2.34	0.42
1:A:216:ARG:CZ	1:A:258:ALA:HB2	2.50	0.42
1:A:318:LEU:O	1:A:325:ILE:HA	2.20	0.42
1:A:181:VAL:HG23	1:A:253:TYR:HB3	2.01	0.42
1:A:190:ARG:HG3	1:A:190:ARG:HH11	1.85	0.41
1:A:223:LYS:NZ	1:A:499:TYR:CE1	2.88	0.41
1:A:249:LEU:O	1:A:510:PRO:HG2	2.20	0.41
1:A:221:ARG:H	1:A:221:ARG:HD3	1.86	0.41
1:A:429:LYS:HE3	1:A:429:LYS:CA	2.51	0.41
1:A:397:VAL:O	1:A:401:VAL:HG23	2.21	0.41
1:A:221:ARG:CD	1:A:221:ARG:N	2.84	0.41
1:A:365:SER:OG	1:A:366:PRO:HD3	2.21	0.41
1:A:219:LYS:HE3	1:A:258:ALA:N	2.36	0.40
1:A:29:LYS:HB2	1:A:32:GLU:HG2	2.03	0.40
1:A:208:THR:HB	1:A:518:THR:HG21	2.03	0.40

There are no symmetry-related clashes.

5.3 Torsion angles ⓘ

5.3.1 Protein backbone ⓘ

In the following table, the Percentiles column shows the percent Ramachandran outliers of the chain as a percentile score with respect to all X-ray entries followed by that with respect to entries of similar resolution.

The Analysed column shows the number of residues for which the backbone conformation was analysed, and the total number of residues.

Mol	Chain	Analysed	Favoured	Allowed	Outliers	Percentiles	
1	A	497/598 (83%)	477 (96%)	20 (4%)	0	100	100

There are no Ramachandran outliers to report.

5.3.2 Protein sidechains ⓘ

In the following table, the Percentiles column shows the percent sidechain outliers of the chain as a percentile score with respect to all X-ray entries followed by that with respect to entries of similar resolution.

The Analysed column shows the number of residues for which the sidechain conformation was analysed, and the total number of residues.

Mol	Chain	Analysed	Rotameric	Outliers	Percentiles	
1	A	444/532 (84%)	440 (99%)	4 (1%)	75	86

All (4) residues with a non-rotameric sidechain are listed below:

Mol	Chain	Res	Type
1	A	126	VAL
1	A	260	CYS
1	A	334	VAL
1	A	508	SER

Sometimes sidechains can be flipped to improve hydrogen bonding and reduce clashes. All (5) such sidechains are listed below:

Mol	Chain	Res	Type
1	A	147	GLN
1	A	233	ASN
1	A	244	GLN
1	A	267	ASN
1	A	410	HIS

5.3.3 RNA ⓘ

There are no RNA molecules in this entry.

5.4 Non-standard residues in protein, DNA, RNA chains ⓘ

There are no non-standard protein/DNA/RNA residues in this entry.

5.5 Carbohydrates [i](#)

There are no oligosaccharides in this entry.

5.6 Ligand geometry [i](#)

1 ligand is modelled in this entry.

In the following table, the Counts columns list the number of bonds (or angles) for which Mogul statistics could be retrieved, the number of bonds (or angles) that are observed in the model and the number of bonds (or angles) that are defined in the Chemical Component Dictionary. The Link column lists molecule types, if any, to which the group is linked. The Z score for a bond length (or angle) is the number of standard deviations the observed value is removed from the expected value. A bond length (or angle) with $|Z| > 2$ is considered an outlier worth inspection. RMSZ is the root-mean-square of all Z scores of the bond lengths (or angles).

Mol	Type	Chain	Res	Link	Bond lengths			Bond angles		
					Counts	RMSZ	# Z > 2	Counts	RMSZ	# Z > 2
2	A1ARB	A	601	-	36,43,43	2.52	12 (33%)	40,63,63	2.46	15 (37%)

In the following table, the Chirals column lists the number of chiral outliers, the number of chiral centers analysed, the number of these observed in the model and the number defined in the Chemical Component Dictionary. Similar counts are reported in the Torsion and Rings columns. '-' means no outliers of that kind were identified.

Mol	Type	Chain	Res	Link	Chirals	Torsions	Rings
2	A1ARB	A	601	-	-	2/21/60/60	0/5/5/5

All (12) bond length outliers are listed below:

Mol	Chain	Res	Type	Atoms	Z	Observed(Å)	Ideal(Å)
2	A	601	A1ARB	C30-N31	6.76	1.46	1.34
2	A	601	A1ARB	C09-N08	5.79	1.46	1.34
2	A	601	A1ARB	C14-C13	-5.51	1.39	1.49
2	A	601	A1ARB	C16-C15	-3.80	1.37	1.42
2	A	601	A1ARB	C06-C05	-3.44	1.33	1.39
2	A	601	A1ARB	C23-C22	3.14	1.54	1.41
2	A	601	A1ARB	C39-C33	3.03	1.58	1.53
2	A	601	A1ARB	C26-C30	2.93	1.55	1.51
2	A	601	A1ARB	O21-C19	-2.82	1.18	1.23
2	A	601	A1ARB	C34-C33	-2.55	1.48	1.53
2	A	601	A1ARB	O11-C09	-2.35	1.19	1.23
2	A	601	A1ARB	C03-C02	-2.06	1.33	1.38

All (15) bond angle outliers are listed below:

Mol	Chain	Res	Type	Atoms	Z	Observed(°)	Ideal(°)
2	A	601	A1ARB	C14-C15-N18	6.16	131.13	125.35
2	A	601	A1ARB	C02-C01-C06	-6.09	112.72	120.24
2	A	601	A1ARB	C14-C13-C10	-5.14	119.88	125.09
2	A	601	A1ARB	C20-C19-N18	-4.56	107.95	113.23
2	A	601	A1ARB	C01-C06-C05	3.57	124.92	120.65
2	A	601	A1ARB	C26-C30-N31	3.42	120.81	114.77
2	A	601	A1ARB	C13-C14-C15	3.32	119.83	112.22
2	A	601	A1ARB	C03-C02-C01	3.24	124.31	119.87
2	A	601	A1ARB	C03-C04-C05	3.23	124.52	120.65
2	A	601	A1ARB	C37-C38-C33	-2.94	109.67	113.05
2	A	601	A1ARB	C02-C03-C04	-2.54	117.11	120.24
2	A	601	A1ARB	C22-C20-C19	2.51	130.21	119.73
2	A	601	A1ARB	C10-C09-N08	2.50	119.23	116.69
2	A	601	A1ARB	C37-N36-C35	2.17	116.54	110.40
2	A	601	A1ARB	C22-C20-C16	-2.05	122.87	132.75

There are no chirality outliers.

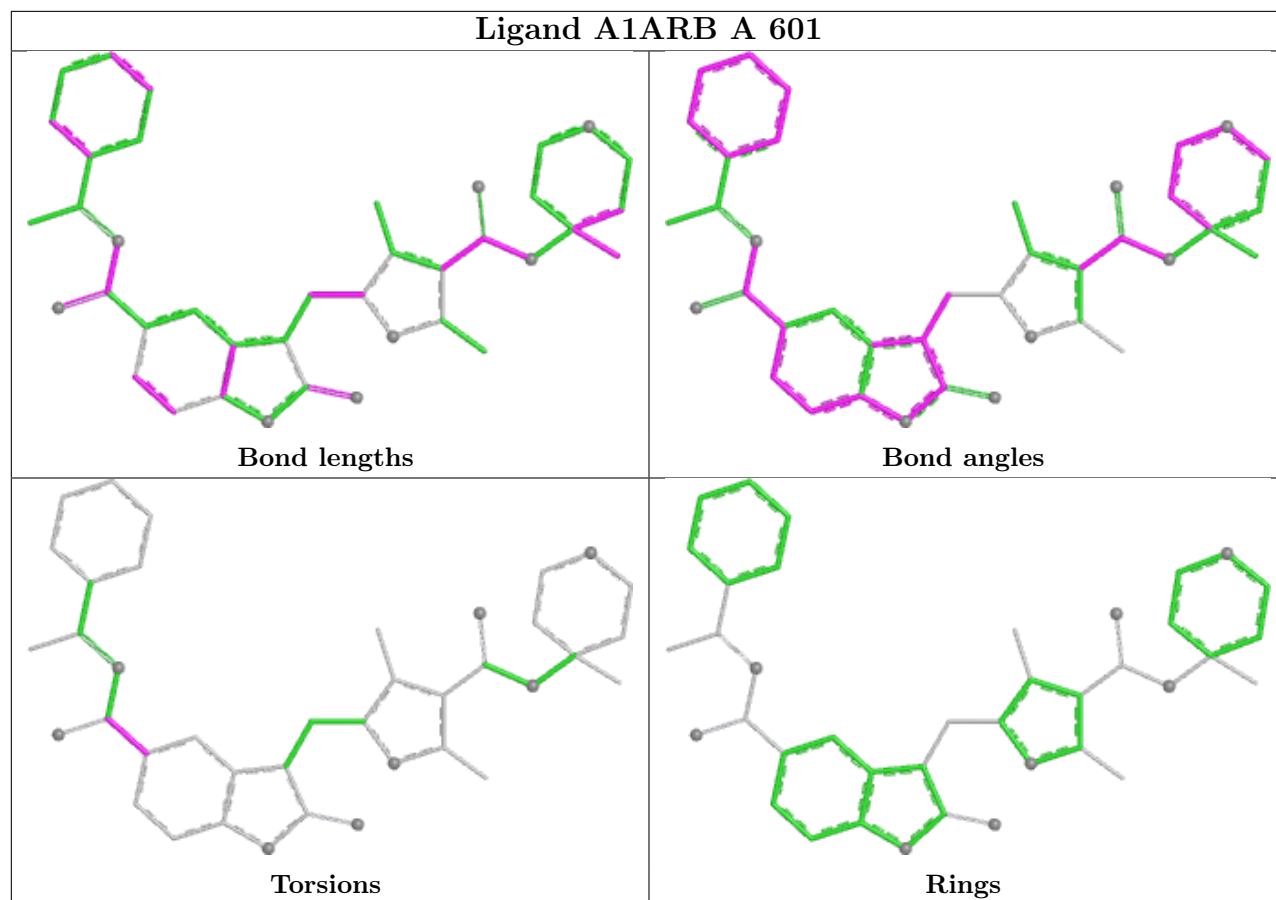
All (2) torsion outliers are listed below:

Mol	Chain	Res	Type	Atoms
2	A	601	A1ARB	O11-C09-C10-C17
2	A	601	A1ARB	N08-C09-C10-C17

There are no ring outliers.

No monomer is involved in short contacts.

The following is a two-dimensional graphical depiction of Mogul quality analysis of bond lengths, bond angles, torsion angles, and ring geometry for all instances of the Ligand of Interest. In addition, ligands with molecular weight > 250 and outliers as shown on the validation Tables will also be included. For torsion angles, if less than 5% of the Mogul distribution of torsion angles is within 10 degrees of the torsion angle in question, then that torsion angle is considered an outlier. Any bond that is central to one or more torsion angles identified as an outlier by Mogul will be highlighted in the graph. For rings, the root-mean-square deviation (RMSD) between the ring in question and similar rings identified by Mogul is calculated over all ring torsion angles. If the average RMSD is greater than 60 degrees and the minimal RMSD between the ring in question and any Mogul-identified rings is also greater than 60 degrees, then that ring is considered an outlier. The outliers are highlighted in purple. The color gray indicates Mogul did not find sufficient equivalents in the CSD to analyse the geometry.



5.7 Other polymers [i](#)

There are no such residues in this entry.

5.8 Polymer linkage issues [i](#)

There are no chain breaks in this entry.

6 Fit of model and data

6.1 Protein, DNA and RNA chains

In the following table, the column labelled ‘#RSRZ> 2’ contains the number (and percentage) of RSRZ outliers, followed by percent RSRZ outliers for the chain as percentile scores relative to all X-ray entries and entries of similar resolution. The OWAB column contains the minimum, median, 95th percentile and maximum values of the occupancy-weighted average B-factor per residue. The column labelled ‘Q< 0.9’ lists the number of (and percentage) of residues with an average occupancy less than 0.9.

Mol	Chain	Analysed	<RSRZ>	#RSRZ>2	OWAB(Å ²)	Q<0.9
1	A	501/598 (83%)	0.31	25 (4%) 35 36	34, 78, 134, 158	0

All (25) RSRZ outliers are listed below:

Mol	Chain	Res	Type	RSRZ
1	A	328	SER	4.4
1	A	473	TYR	3.8
1	A	259	LEU	3.4
1	A	197	PHE	3.4
1	A	491	LEU	3.3
1	A	129	THR	3.1
1	A	542	PRO	3.0
1	A	134	LEU	3.0
1	A	531	GLY	2.8
1	A	125	LEU	2.7
1	A	133	LEU	2.6
1	A	131	GLU	2.5
1	A	124	ASP	2.5
1	A	255	THR	2.5
1	A	541	HIS	2.4
1	A	494	THR	2.3
1	A	116	VAL	2.3
1	A	472	VAL	2.3
1	A	123	GLN	2.3
1	A	139	LYS	2.2
1	A	218	GLU	2.2
1	A	493	HIS	2.1
1	A	527	PHE	2.1
1	A	118	ILE	2.1
1	A	257	ASP	2.0

6.2 Non-standard residues in protein, DNA, RNA chains [i](#)

There are no non-standard protein/DNA/RNA residues in this entry.

6.3 Carbohydrates [i](#)

There are no oligosaccharides in this entry.

6.4 Ligands [i](#)

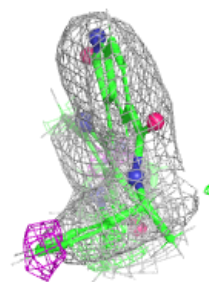
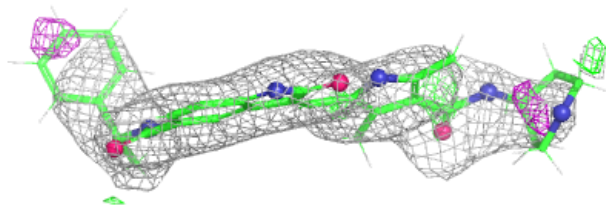
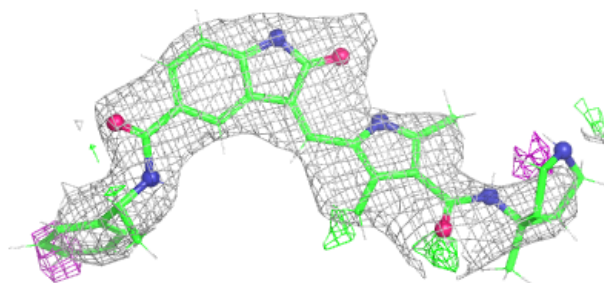
In the following table, the Atoms column lists the number of modelled atoms in the group and the number defined in the chemical component dictionary. The B-factors column lists the minimum, median, 95th percentile and maximum values of B factors of atoms in the group. The column labelled 'Q< 0.9' lists the number of atoms with occupancy less than 0.9.

Mol	Type	Chain	Res	Atoms	RSCC	RSR	B-factors(\AA^2)	Q<0.9
2	A1ARB	A	601	39/39	0.79	0.18	65,110,168,168	0

The following is a graphical depiction of the model fit to experimental electron density of all instances of the Ligand of Interest. In addition, ligands with molecular weight > 250 and outliers as shown on the geometry validation Tables will also be included. Each fit is shown from different orientation to approximate a three-dimensional view.

Electron density around A1ARB A 601:

$2mF_o-DF_c$ (at 0.7 rmsd) in gray
 mF_o-DF_c (at 3 rmsd) in purple (negative)
and green (positive)



6.5 Other polymers [i](#)

There are no such residues in this entry.