



# Full wwPDB X-ray Structure Validation Report ⓘ

Aug 18, 2025 – 04:33 PM EDT

PDB ID : 9BWO / pdb\_00009bwo  
Title : Crystal structure of polyketoacyl-CoA thiolase from Burkholderia sp. in complex with acetyl-coA  
Authors : Pereira, J.H.; Wang, Z.; Keasling, J.D.; Adams, P.D.  
Deposited on : 2024-05-21  
Resolution : 2.23 Å(reported)

This is a Full wwPDB X-ray Structure Validation Report for a publicly released PDB entry.

We welcome your comments at [validation@mail.wwpdb.org](mailto:validation@mail.wwpdb.org)

A user guide is available at

<https://www.wwpdb.org/validation/2017/XrayValidationReportHelp>

with specific help available everywhere you see the ⓘ symbol.

The types of validation reports are described at

<http://www.wwpdb.org/validation/2017/FAQs#types>.

---

The following versions of software and data (see [references ⓘ](#)) were used in the production of this report:

MolProbity : 4-5-2 with Phenix2.0rc1  
Mogul : 2022.3.0, CSD as543be (2022)  
Xtriage (Phenix) : 2.0rc1  
EDS : 3.0  
buster-report : 1.1.7 (2018)  
Percentile statistics : 20231227.v01 (using entries in the PDB archive December 27th 2023)  
CCP4 : 9.0.006 (Gargrove)  
Density-Fitness : 1.0.12  
Ideal geometry (proteins) : Engh & Huber (2001)  
Ideal geometry (DNA, RNA) : Parkinson et al. (1996)  
Validation Pipeline (wwPDB-VP) : 2.45.1

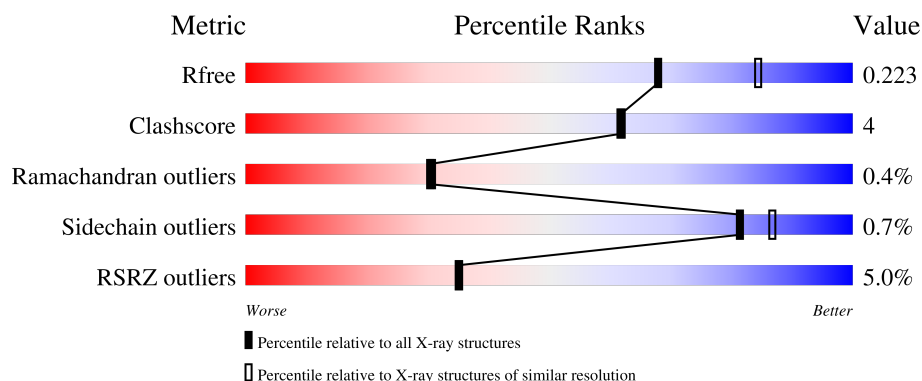
# 1 Overall quality at a glance

The following experimental techniques were used to determine the structure:

*X-RAY DIFFRACTION*

The reported resolution of this entry is 2.23 Å.

Percentile scores (ranging between 0-100) for global validation metrics of the entry are shown in the following graphic. The table shows the number of entries on which the scores are based.



Metric	Whole archive (#Entries)	Similar resolution (#Entries, resolution range(Å))
$R_{free}$	164625	3139 (2.26-2.22)
Clashscore	180529	3381 (2.26-2.22)
Ramachandran outliers	177936	3334 (2.26-2.22)
Sidechain outliers	177891	3335 (2.26-2.22)
RSRZ outliers	164620	3138 (2.26-2.22)

The table below summarises the geometric issues observed across the polymeric chains and their fit to the electron density. The red, orange, yellow and green segments of the lower bar indicate the fraction of residues that contain outliers for  $\geq 3$ , 2, 1 and 0 types of geometric quality criteria respectively. A grey segment represents the fraction of residues that are not modelled. The numeric value for each fraction is indicated below the corresponding segment, with a dot representing fractions  $\leq 5\%$ . The upper red bar (where present) indicates the fraction of residues that have poor fit to the electron density. The numeric value is given above the bar.

Mol	Chain	Length	Quality of chain
1	A	399	
1	B	399	

## 2 Entry composition [i](#)

There are 3 unique types of molecules in this entry. The entry contains 11849 atoms, of which 5845 are hydrogens and 0 are deuteriums.

In the tables below, the ZeroOcc column contains the number of atoms modelled with zero occupancy, the AltConf column contains the number of residues with at least one atom in alternate conformation and the Trace column contains the number of residues modelled with at most 2 atoms.

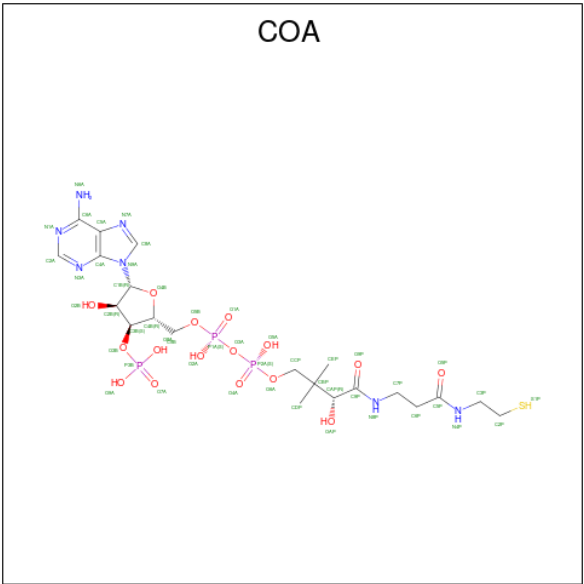
- Molecule 1 is a protein called Acetyl-CoA acetyltransferase.

Mol	Chain	Residues	Atoms						ZeroOcc	AltConf	Trace
1	B	394	Total	C	H	N	O	S	0	0	0
			5756	1789	2891	516	546	14			
1	A	394	Total	C	H	N	O	S	0	0	0
			5756	1789	2891	516	546	14			

There are 4 discrepancies between the modelled and reference sequences:

Chain	Residue	Modelled	Actual	Comment	Reference
B	1	GLY	-	expression tag	UNP A0AAJ0LU93
B	2	HIS	-	expression tag	UNP A0AAJ0LU93
A	1	GLY	-	expression tag	UNP A0AAJ0LU93
A	2	HIS	-	expression tag	UNP A0AAJ0LU93

- Molecule 2 is COENZYME A (CCD ID: COA) (formula:  $C_{21}H_{36}N_7O_{16}P_3S$ ) (labeled as "Ligand of Interest" by depositor).



Mol	Chain	Residues	Atoms							ZeroOcc	AltConf
2	B	1	Total	C	H	N	O	P	S	0	0
			80	21	32	7	16	3	1		
2	A	1	Total	C	H	N	O	P	S	0	0
			79	21	31	7	16	3	1		

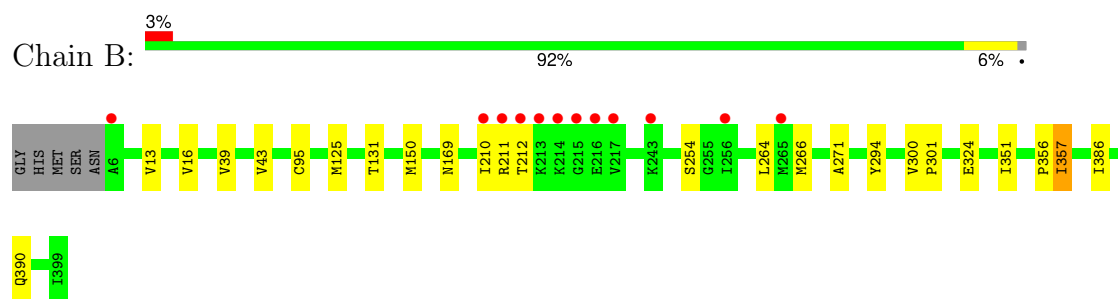
- Molecule 3 is water.

Mol	Chain	Residues	Atoms		ZeroOcc	AltConf
3	B	129	Total	O	0	0
			129	129		
3	A	49	Total	O	0	0
			49	49		

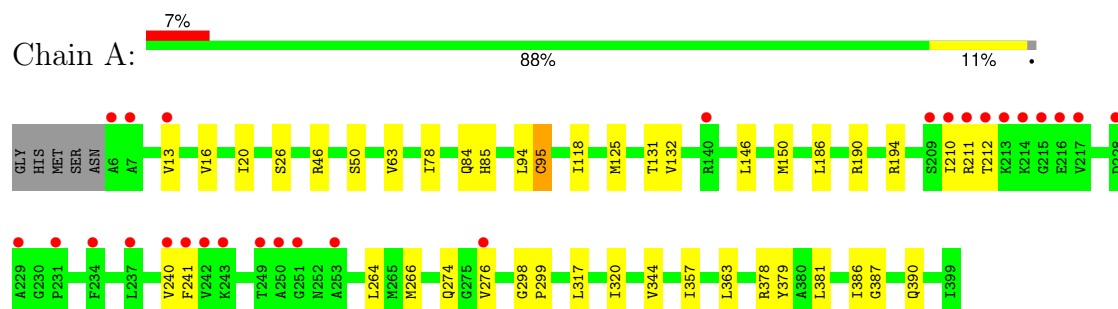
### 3 Residue-property plots [i](#)

These plots are drawn for all protein, RNA, DNA and oligosaccharide chains in the entry. The first graphic for a chain summarises the proportions of the various outlier classes displayed in the second graphic. The second graphic shows the sequence view annotated by issues in geometry and electron density. Residues are color-coded according to the number of geometric quality criteria for which they contain at least one outlier: green = 0, yellow = 1, orange = 2 and red = 3 or more. A red dot above a residue indicates a poor fit to the electron density ( $RSRZ > 2$ ). Stretches of 2 or more consecutive residues without any outlier are shown as a green connector. Residues present in the sample, but not in the model, are shown in grey.

- Molecule 1: Acetyl-CoA acetyltransferase



- Molecule 1: Acetyl-CoA acetyltransferase



## 4 Data and refinement statistics

Property	Value	Source
Space group	P 43 21 2	Depositor
Cell constants a, b, c, $\alpha$ , $\beta$ , $\gamma$	130.29Å 130.29Å 121.80Å 90.00° 90.00° 90.00°	Depositor
Resolution (Å)	44.49 – 2.23 44.49 – 2.23	Depositor EDS
% Data completeness (in resolution range)	100.0 (44.49-2.23) 99.9 (44.49-2.23)	Depositor EDS
$R_{merge}$	0.15	Depositor
$R_{sym}$	(Not available)	Depositor
$\langle I/\sigma(I) \rangle$ <sup>1</sup>	1.13 (at 2.22Å)	Xtriage
Refinement program	PHENIX 1.20.1_4487	Depositor
R, $R_{free}$	0.191 , 0.222 0.192 , 0.223	Depositor DCC
$R_{free}$ test set	1987 reflections (3.85%)	wwPDB-VP
Wilson B-factor (Å <sup>2</sup> )	49.2	Xtriage
Anisotropy	0.265	Xtriage
Bulk solvent $k_{sol}$ (e/Å <sup>3</sup> ), $B_{sol}$ (Å <sup>2</sup> )	0.39 , 38.9	EDS
L-test for twinning <sup>2</sup>	$\langle  L  \rangle = 0.50$ , $\langle L^2 \rangle = 0.33$	Xtriage
Estimated twinning fraction	No twinning to report.	Xtriage
$F_o, F_c$ correlation	0.96	EDS
Total number of atoms	11849	wwPDB-VP
Average B, all atoms (Å <sup>2</sup> )	71.0	wwPDB-VP

Xtriage's analysis on translational NCS is as follows: *The largest off-origin peak in the Patterson function is 3.08% of the height of the origin peak. No significant pseudotranslation is detected.*

<sup>1</sup>Intensities estimated from amplitudes.

<sup>2</sup>Theoretical values of  $\langle |L| \rangle$ ,  $\langle L^2 \rangle$  for acentric reflections are 0.5, 0.333 respectively for untwinned datasets, and 0.375, 0.2 for perfectly twinned datasets.

## 5 Model quality [i](#)

### 5.1 Standard geometry [i](#)

Bond lengths and bond angles in the following residue types are not validated in this section: SCY, COA

The Z score for a bond length (or angle) is the number of standard deviations the observed value is removed from the expected value. A bond length (or angle) with  $|Z| > 5$  is considered an outlier worth inspection. RMSZ is the root-mean-square of all Z scores of the bond lengths (or angles).

Mol	Chain	Bond lengths		Bond angles	
		RMSZ	$\# Z  > 5$	RMSZ	$\# Z  > 5$
1	A	0.11	0/2898	0.33	0/3926
1	B	0.13	0/2898	0.34	0/3926
All	All	0.12	0/5796	0.33	0/7852

There are no bond length outliers.

There are no bond angle outliers.

There are no chirality outliers.

There are no planarity outliers.

### 5.2 Too-close contacts [i](#)

In the following table, the Non-H and H(model) columns list the number of non-hydrogen atoms and hydrogen atoms in the chain respectively. The H(added) column lists the number of hydrogen atoms added and optimized by MolProbity. The Clashes column lists the number of clashes within the asymmetric unit, whereas Symm-Clashes lists symmetry-related clashes.

Mol	Chain	Non-H	H(model)	H(added)	Clashes	Symm-Clashes
1	A	2865	2891	2894	34	0
1	B	2865	2891	2894	14	0
2	A	48	31	32	2	0
2	B	48	32	32	0	0
3	A	49	0	0	1	0
3	B	129	0	0	1	0
All	All	6004	5845	5852	47	0

The all-atom clashscore is defined as the number of clashes found per 1000 atoms (including hydrogen atoms). The all-atom clashscore for this structure is 4.

All (47) close contacts within the same asymmetric unit are listed below, sorted by their clash

magnitude.

Atom-1	Atom-2	Interatomic distance (Å)	Clash overlap (Å)
1:A:132:VAL:HG22	1:A:146:LEU:HD12	1.74	0.69
1:A:186:LEU:HD21	1:A:190:ARG:NH2	2.10	0.67
1:B:16:VAL:HG12	1:B:43:VAL:HG13	1.76	0.66
1:B:125:MET:HE3	1:B:150:MET:HG3	1.78	0.65
1:B:210:ILE:O	1:B:212:THR:HG23	1.98	0.62
1:A:363:LEU:HD23	1:A:363:LEU:C	2.25	0.61
1:A:20:ILE:HD11	1:A:363:LEU:HD11	1.83	0.59
1:B:125:MET:HE3	1:B:150:MET:CG	2.34	0.57
1:B:324:GLU:OE2	3:B:601:HOH:O	2.17	0.57
1:A:194:ARG:HB2	1:A:194:ARG:NH1	2.20	0.57
1:B:386:ILE:HB	1:B:390:GLN:HB2	1.89	0.55
1:A:240:VAL:HG11	2:A:500:COA:H133	1.90	0.54
1:A:210:ILE:O	1:A:212:THR:HG23	2.08	0.53
1:A:132:VAL:HG22	1:A:146:LEU:CD1	2.41	0.51
1:A:320:ILE:HD13	1:A:381:LEU:HB3	1.92	0.51
1:A:118:ILE:HG12	1:A:264:LEU:HD23	1.94	0.49
1:A:95:SCY:HE1	1:A:387:GLY:HA3	1.94	0.48
1:A:241:PHE:CZ	2:A:500:COA:H131	2.48	0.48
1:B:39:VAL:O	1:B:43:VAL:HG22	2.14	0.48
1:A:125:MET:CE	1:A:150:MET:HG2	2.44	0.48
1:A:210:ILE:O	1:A:210:ILE:CG1	2.61	0.48
1:A:210:ILE:O	1:A:210:ILE:HG13	2.14	0.48
1:A:274:GLN:HB3	1:A:276:VAL:HG13	1.95	0.48
1:A:118:ILE:HG12	1:A:264:LEU:CD2	2.45	0.47
1:A:63:VAL:HG21	1:A:125:MET:HE1	1.97	0.47
1:B:266:MET:CE	1:B:271:ALA:HA	2.45	0.46
1:A:16:VAL:HG23	1:A:46:ARG:CZ	2.45	0.46
1:A:94:LEU:HD22	1:A:94:LEU:N	2.31	0.45
1:B:254:SER:HA	1:B:351:ILE:HA	1.99	0.45
1:A:118:ILE:CG1	1:A:264:LEU:CD2	2.95	0.44
1:A:13:VAL:HG11	1:A:266:MET:HG3	1.99	0.44
1:A:386:ILE:HB	1:A:390:GLN:HB2	1.99	0.44
1:B:356:PRO:O	1:B:357:ILE:C	2.60	0.44
1:A:378:ARG:HD3	1:A:379:TYR:CE2	2.53	0.44
1:A:26:SER:O	3:A:601:HOH:O	2.20	0.43
1:A:13:VAL:HG11	1:A:266:MET:HE3	1.99	0.43
1:A:125:MET:HE3	1:A:150:MET:HG2	2.00	0.43
1:A:317:LEU:CB	1:A:320:ILE:HD11	2.49	0.43
1:B:300:VAL:HB	1:B:301:PRO:CD	2.49	0.42
1:A:194:ARG:CG	1:A:194:ARG:HH11	2.32	0.42
1:A:298:GLY:N	1:A:299:PRO:CD	2.82	0.42

*Continued on next page...*



*Continued from previous page...*

Atom-1	Atom-2	Interatomic distance (Å)	Clash overlap (Å)
1:B:131:THR:HG22	1:A:131:THR:HG22	2.02	0.41
1:A:320:ILE:HB	1:A:344:VAL:HA	2.03	0.41
1:A:85:HIS:CD2	1:A:85:HIS:C	2.98	0.41
1:B:169:ASN:HB3	1:B:294:TYR:CE1	2.56	0.41
1:A:78:ILE:HD11	1:A:84:GLN:HA	2.03	0.40
1:B:254:SER:HB3	1:B:324:GLU:O	2.22	0.40

There are no symmetry-related clashes.

## 5.3 Torsion angles [i](#)

### 5.3.1 Protein backbone [i](#)

In the following table, the Percentiles column shows the percent Ramachandran outliers of the chain as a percentile score with respect to all X-ray entries followed by that with respect to entries of similar resolution.

The Analysed column shows the number of residues for which the backbone conformation was analysed, and the total number of residues.

Mol	Chain	Analysed	Favoured	Allowed	Outliers	Percentiles	
1	A	391/399 (98%)	376 (96%)	14 (4%)	1 (0%)	37	39
1	B	391/399 (98%)	380 (97%)	9 (2%)	2 (0%)	25	24
All	All	782/798 (98%)	756 (97%)	23 (3%)	3 (0%)	30	31

All (3) Ramachandran outliers are listed below:

Mol	Chain	Res	Type
1	B	357	ILE
1	A	211	ARG
1	B	211	ARG

### 5.3.2 Protein sidechains [i](#)

In the following table, the Percentiles column shows the percent sidechain outliers of the chain as a percentile score with respect to all X-ray entries followed by that with respect to entries of similar resolution.

The Analysed column shows the number of residues for which the sidechain conformation was analysed, and the total number of residues.

Mol	Chain	Analysed	Rotameric	Outliers	Percentiles	
1	A	287/291 (99%)	285 (99%)	2 (1%)	81	87
1	B	287/291 (99%)	285 (99%)	2 (1%)	81	87
All	All	574/582 (99%)	570 (99%)	4 (1%)	81	87

All (4) residues with a non-rotameric sidechain are listed below:

Mol	Chain	Res	Type
1	B	13	VAL
1	B	264	LEU
1	A	50	SER
1	A	357	ILE

Sometimes sidechains can be flipped to improve hydrogen bonding and reduce clashes. All (3) such sidechains are listed below:

Mol	Chain	Res	Type
1	B	159	GLN
1	A	85	HIS
1	A	139	GLN

### 5.3.3 RNA ⓘ

There are no RNA molecules in this entry.

## 5.4 Non-standard residues in protein, DNA, RNA chains ⓘ

2 non-standard protein/DNA/RNA residues are modelled in this entry.

In the following table, the Counts columns list the number of bonds (or angles) for which Mogul statistics could be retrieved, the number of bonds (or angles) that are observed in the model and the number of bonds (or angles) that are defined in the Chemical Component Dictionary. The Link column lists molecule types, if any, to which the group is linked. The Z score for a bond length (or angle) is the number of standard deviations the observed value is removed from the expected value. A bond length (or angle) with  $|Z| > 2$  is considered an outlier worth inspection. RMSZ is the root-mean-square of all Z scores of the bond lengths (or angles).

Mol	Type	Chain	Res	Link	Bond lengths			Bond angles		
					Counts	RMSZ	$\# Z  > 2$	Counts	RMSZ	$\# Z  > 2$
1	SCY	B	95	1	7,8,9	1.54	1 (14%)	4,9,11	6.03	3 (75%)
1	SCY	A	95	1	7,8,9	1.53	1 (14%)	4,9,11	5.03	3 (75%)

In the following table, the Chirals column lists the number of chiral outliers, the number of chiral centers analysed, the number of these observed in the model and the number defined in the Chemical Component Dictionary. Similar counts are reported in the Torsion and Rings columns. '-' means no outliers of that kind were identified.

Mol	Type	Chain	Res	Link	Chirals	Torsions	Rings
1	SCY	B	95	1	-	2/5/7/9	-
1	SCY	A	95	1	-	1/5/7/9	-

All (2) bond length outliers are listed below:

Mol	Chain	Res	Type	Atoms	Z	Observed(Å)	Ideal(Å)
1	B	95	SCY	OCD-CD	3.82	1.40	1.21
1	A	95	SCY	OCD-CD	3.81	1.40	1.21

All (6) bond angle outliers are listed below:

Mol	Chain	Res	Type	Atoms	Z	Observed(°)	Ideal(°)
1	B	95	SCY	OCD-CD-SG	-9.89	82.65	122.65
1	A	95	SCY	OCD-CD-SG	-7.58	91.98	122.65
1	B	95	SCY	CE-CD-SG	5.78	150.64	114.13
1	A	95	SCY	CE-CD-SG	5.46	148.63	114.13
1	A	95	SCY	OCD-CD-CE	-3.73	108.67	123.12
1	B	95	SCY	OCD-CD-CE	-3.69	108.84	123.12

There are no chirality outliers.

All (3) torsion outliers are listed below:

Mol	Chain	Res	Type	Atoms
1	B	95	SCY	OCD-CD-SG-CB
1	A	95	SCY	OCD-CD-SG-CB
1	B	95	SCY	CA-CB-SG-CD

There are no ring outliers.

1 monomer is involved in 1 short contact:

Mol	Chain	Res	Type	Clashes	Symm-Clashes
1	A	95	SCY	1	0

## 5.5 Carbohydrates ⓘ

There are no oligosaccharides in this entry.

## 5.6 Ligand geometry

2 ligands are modelled in this entry.

In the following table, the Counts columns list the number of bonds (or angles) for which Mogul statistics could be retrieved, the number of bonds (or angles) that are observed in the model and the number of bonds (or angles) that are defined in the Chemical Component Dictionary. The Link column lists molecule types, if any, to which the group is linked. The Z score for a bond length (or angle) is the number of standard deviations the observed value is removed from the expected value. A bond length (or angle) with  $|Z| > 2$  is considered an outlier worth inspection. RMSZ is the root-mean-square of all Z scores of the bond lengths (or angles).

Mol	Type	Chain	Res	Link	Bond lengths			Bond angles		
					Counts	RMSZ	# Z  > 2	Counts	RMSZ	# Z  > 2
2	COA	A	500	-	43,50,50	3.58	18 (41%)	56,75,75	1.43	8 (14%)
2	COA	B	500	-	43,50,50	3.58	18 (41%)	56,75,75	1.26	5 (8%)

In the following table, the Chirals column lists the number of chiral outliers, the number of chiral centers analysed, the number of these observed in the model and the number defined in the Chemical Component Dictionary. Similar counts are reported in the Torsion and Rings columns. '-' means no outliers of that kind were identified.

Mol	Type	Chain	Res	Link	Chirals	Torsions	Rings
2	COA	A	500	-	-	5/44/64/64	0/3/3/3
2	COA	B	500	-	-	9/44/64/64	0/3/3/3

All (36) bond length outliers are listed below:

Mol	Chain	Res	Type	Atoms	Z	Observed(Å)	Ideal(Å)
2	B	500	COA	C2B-C3B	-11.86	1.27	1.53
2	A	500	COA	C2B-C3B	-11.79	1.27	1.53
2	A	500	COA	O4B-C1B	-9.98	1.27	1.40
2	B	500	COA	O4B-C1B	-9.08	1.29	1.40
2	B	500	COA	P2A-O3A	8.41	1.68	1.59
2	A	500	COA	P2A-O3A	8.25	1.68	1.59
2	B	500	COA	P1A-O3A	6.21	1.66	1.59
2	A	500	COA	P1A-O3A	5.93	1.65	1.59
2	B	500	COA	O4B-C4B	5.72	1.57	1.45
2	A	500	COA	C5P-N4P	5.49	1.46	1.33
2	B	500	COA	C5P-N4P	5.48	1.46	1.33
2	A	500	COA	O4B-C4B	5.27	1.56	1.45
2	A	500	COA	C5B-C4B	-5.01	1.36	1.51
2	B	500	COA	C9P-N8P	4.97	1.45	1.33
2	B	500	COA	C5B-C4B	-4.92	1.36	1.51

*Continued on next page...*

*Continued from previous page...*

Mol	Chain	Res	Type	Atoms	Z	Observed(Å)	Ideal(Å)
2	A	500	COA	C9P-N8P	4.79	1.44	1.33
2	A	500	COA	C6A-N6A	4.35	1.49	1.34
2	B	500	COA	C6A-N6A	4.34	1.49	1.34
2	B	500	COA	O9P-C9P	-3.45	1.16	1.23
2	A	500	COA	O9P-C9P	-3.45	1.16	1.23
2	B	500	COA	P3B-O3B	3.27	1.65	1.59
2	A	500	COA	P3B-O3B	3.12	1.65	1.59
2	B	500	COA	P1A-O5B	2.88	1.70	1.59
2	A	500	COA	P1A-O5B	2.76	1.70	1.59
2	B	500	COA	P2A-O6A	2.65	1.69	1.59
2	A	500	COA	P2A-O6A	2.61	1.69	1.59
2	B	500	COA	CDP-CBP	2.61	1.59	1.53
2	B	500	COA	C3P-N4P	2.56	1.51	1.46
2	A	500	COA	C3P-N4P	2.50	1.51	1.46
2	A	500	COA	CDP-CBP	2.49	1.58	1.53
2	B	500	COA	CCP-CBP	2.45	1.56	1.52
2	A	500	COA	CCP-CBP	2.41	1.56	1.52
2	B	500	COA	O3B-C3B	2.26	1.51	1.44
2	A	500	COA	O3B-C3B	2.24	1.51	1.44
2	B	500	COA	C3B-C4B	2.16	1.58	1.52
2	A	500	COA	C3B-C4B	2.03	1.58	1.52

All (13) bond angle outliers are listed below:

Mol	Chain	Res	Type	Atoms	Z	Observed(°)	Ideal(°)
2	B	500	COA	N3A-C2A-N1A	-4.84	122.10	128.67
2	A	500	COA	N3A-C2A-N1A	-4.73	122.25	128.67
2	A	500	COA	C3B-C2B-C1B	4.08	108.87	99.89
2	B	500	COA	C4B-O4B-C1B	-3.98	106.28	109.92
2	B	500	COA	C7P-C6P-C5P	3.40	118.06	112.39
2	A	500	COA	C4B-O4B-C1B	-3.13	107.06	109.92
2	A	500	COA	O4B-C1B-N9A	2.61	112.21	108.75
2	A	500	COA	C7P-C6P-C5P	2.52	116.58	112.39
2	A	500	COA	C4A-C5A-N7A	-2.42	106.78	109.34
2	B	500	COA	C3B-C2B-C1B	2.31	104.98	99.89
2	A	500	COA	C6P-C5P-N4P	2.30	120.54	116.34
2	A	500	COA	C2B-C3B-C4B	2.12	106.95	103.24
2	B	500	COA	C4A-C5A-N7A	-2.06	107.16	109.34

There are no chirality outliers.

All (14) torsion outliers are listed below:

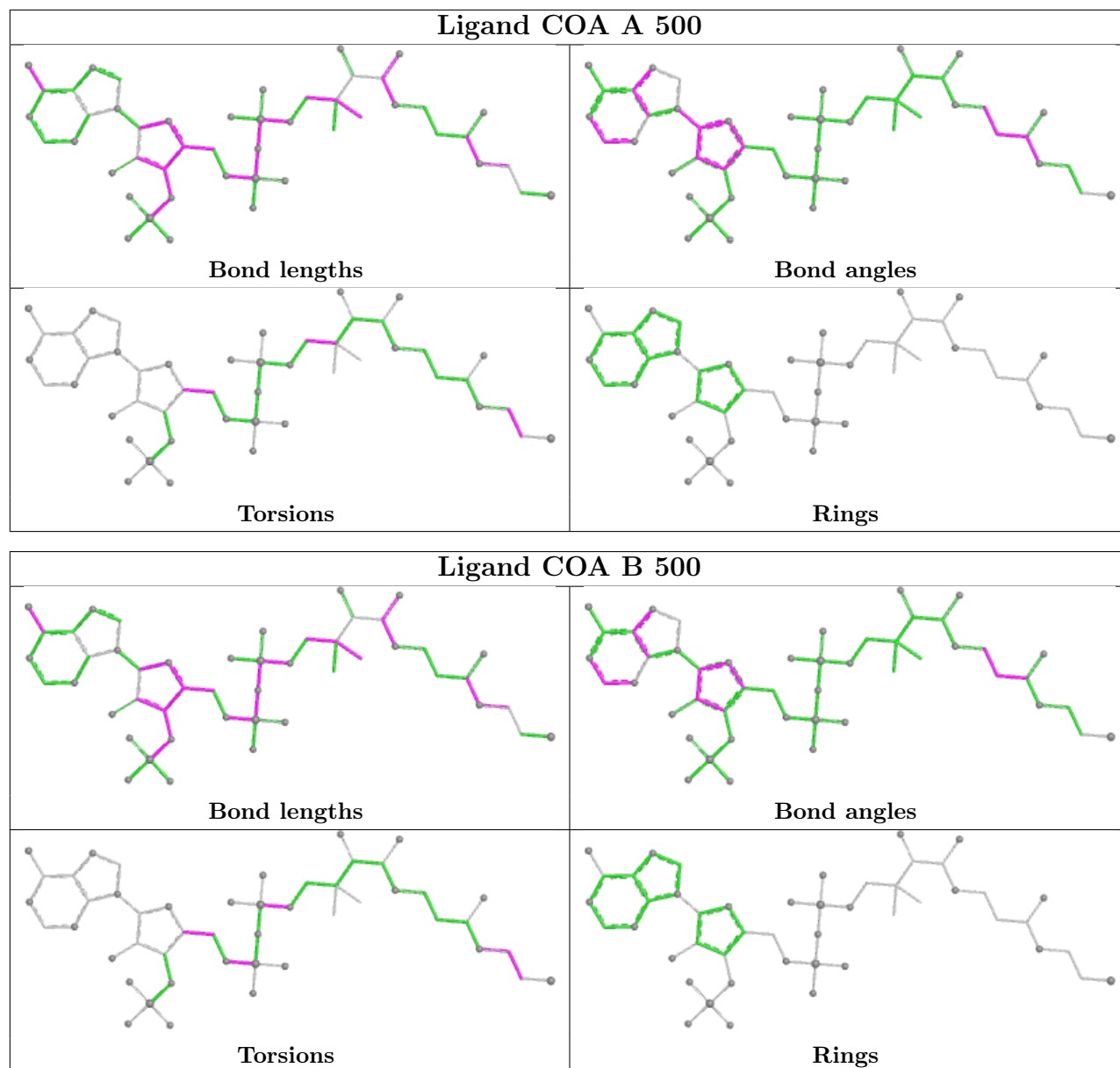
Mol	Chain	Res	Type	Atoms
2	B	500	COA	C5B-O5B-P1A-O2A
2	B	500	COA	CCP-O6A-P2A-O4A
2	B	500	COA	S1P-C2P-C3P-N4P
2	A	500	COA	S1P-C2P-C3P-N4P
2	B	500	COA	C3B-C4B-C5B-O5B
2	B	500	COA	O4B-C4B-C5B-O5B
2	B	500	COA	C2P-C3P-N4P-C5P
2	A	500	COA	CDP-CBP-CCP-O6A
2	A	500	COA	CAP-CBP-CCP-O6A
2	B	500	COA	C5B-O5B-P1A-O1A
2	B	500	COA	C5B-O5B-P1A-O3A
2	B	500	COA	CCP-O6A-P2A-O3A
2	A	500	COA	O4B-C4B-C5B-O5B
2	A	500	COA	CEP-CBP-CCP-O6A

There are no ring outliers.

1 monomer is involved in 2 short contacts:

Mol	Chain	Res	Type	Clashes	Symm-Clashes
2	A	500	COA	2	0

The following is a two-dimensional graphical depiction of Mogul quality analysis of bond lengths, bond angles, torsion angles, and ring geometry for all instances of the Ligand of Interest. In addition, ligands with molecular weight > 250 and outliers as shown on the validation Tables will also be included. For torsion angles, if less than 5% of the Mogul distribution of torsion angles is within 10 degrees of the torsion angle in question, then that torsion angle is considered an outlier. Any bond that is central to one or more torsion angles identified as an outlier by Mogul will be highlighted in the graph. For rings, the root-mean-square deviation (RMSD) between the ring in question and similar rings identified by Mogul is calculated over all ring torsion angles. If the average RMSD is greater than 60 degrees and the minimal RMSD between the ring in question and any Mogul-identified rings is also greater than 60 degrees, then that ring is considered an outlier. The outliers are highlighted in purple. The color gray indicates Mogul did not find sufficient equivalents in the CSD to analyse the geometry.



## 5.7 Other polymers [i](#)

There are no such residues in this entry.

## 5.8 Polymer linkage issues [i](#)

There are no chain breaks in this entry.

## 6 Fit of model and data

### 6.1 Protein, DNA and RNA chains

In the following table, the column labelled ‘#RSRZ > 2’ contains the number (and percentage) of RSRZ outliers, followed by percent RSRZ outliers for the chain as percentile scores relative to all X-ray entries and entries of similar resolution. The OWAB column contains the minimum, median, 95<sup>th</sup> percentile and maximum values of the occupancy-weighted average B-factor per residue. The column labelled ‘Q < 0.9’ lists the number of (and percentage) of residues with an average occupancy less than 0.9.

Mol	Chain	Analysed	<RSRZ>	#RSRZ>2	OWAB(Å <sup>2</sup> )	Q<0.9
1	A	393/399 (98%)	0.42	27 (6%) 24 24	45, 74, 124, 193	0
1	B	393/399 (98%)	-0.25	12 (3%) 51 52	40, 55, 85, 216	0
All	All	786/798 (98%)	0.08	39 (4%) 35 35	40, 60, 118, 216	0

All (39) RSRZ outliers are listed below:

Mol	Chain	Res	Type	RSRZ
1	A	6	ALA	5.3
1	B	214	LYS	4.8
1	A	229	ALA	4.4
1	A	250	ALA	4.3
1	A	276	VAL	4.1
1	B	6	ALA	3.9
1	B	211	ARG	3.8
1	A	251	GLY	3.8
1	A	237	LEU	3.7
1	B	210	ILE	3.6
1	A	211	ARG	3.5
1	A	241	PHE	3.4
1	A	7	ALA	3.4
1	A	210	ILE	3.3
1	A	217	VAL	3.3
1	B	215	GLY	3.2
1	B	265	MET	3.1
1	B	213	LYS	3.1
1	A	215	GLY	3.0
1	A	13	VAL	3.0
1	A	214	LYS	2.9
1	B	217	VAL	2.9
1	A	234	PHE	2.8
1	A	242	VAL	2.7

*Continued on next page...*



*Continued from previous page...*

Mol	Chain	Res	Type	RSRZ
1	B	256	ILE	2.7
1	A	209	SER	2.6
1	A	228	ASP	2.6
1	A	140	ARG	2.6
1	B	212	THR	2.6
1	B	243	LYS	2.5
1	B	216	GLU	2.3
1	A	212	THR	2.3
1	A	213	LYS	2.3
1	A	231	PRO	2.3
1	A	240	VAL	2.3
1	A	216	GLU	2.2
1	A	243	LYS	2.2
1	A	249	THR	2.1
1	A	253	ALA	2.1

## 6.2 Non-standard residues in protein, DNA, RNA chains [i](#)

In the following table, the Atoms column lists the number of modelled atoms in the group and the number defined in the chemical component dictionary. The B-factors column lists the minimum, median, 95<sup>th</sup> percentile and maximum values of B factors of atoms in the group. The column labelled 'Q< 0.9' lists the number of atoms with occupancy less than 0.9.

Mol	Type	Chain	Res	Atoms	RSCC	RSR	B-factors(Å <sup>2</sup> )	Q<0.9
1	SCY	A	95	9/10	0.93	0.12	46,60,72,72	0
1	SCY	B	95	9/10	0.94	0.12	38,51,62,63	0

## 6.3 Carbohydrates [i](#)

There are no oligosaccharides in this entry.

## 6.4 Ligands [i](#)

In the following table, the Atoms column lists the number of modelled atoms in the group and the number defined in the chemical component dictionary. The B-factors column lists the minimum, median, 95<sup>th</sup> percentile and maximum values of B factors of atoms in the group. The column labelled 'Q< 0.9' lists the number of atoms with occupancy less than 0.9.

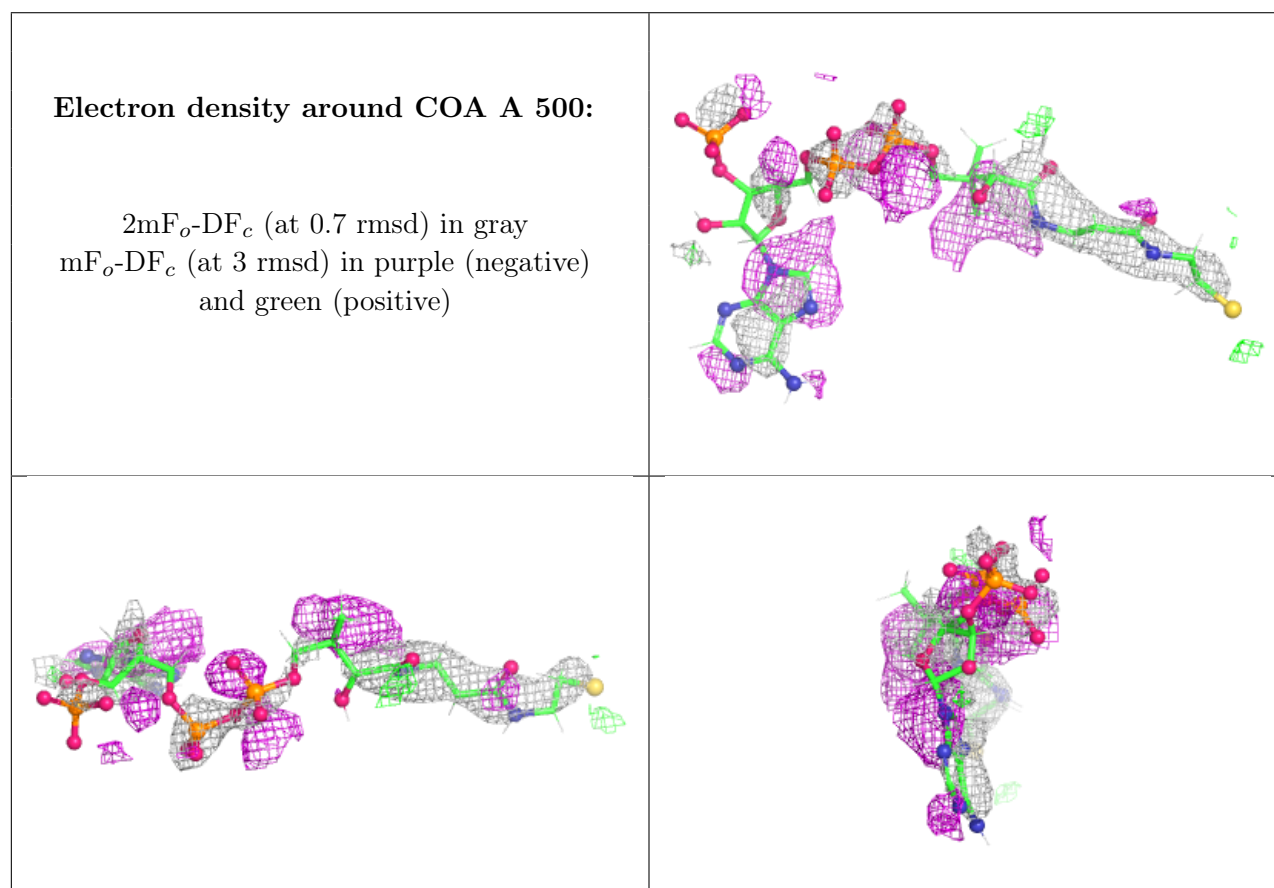
Mol	Type	Chain	Res	Atoms	RSCC	RSR	B-factors(Å <sup>2</sup> )	Q<0.9
2	COA	A	500	48/48	0.64	0.18	78,135,242,283	0

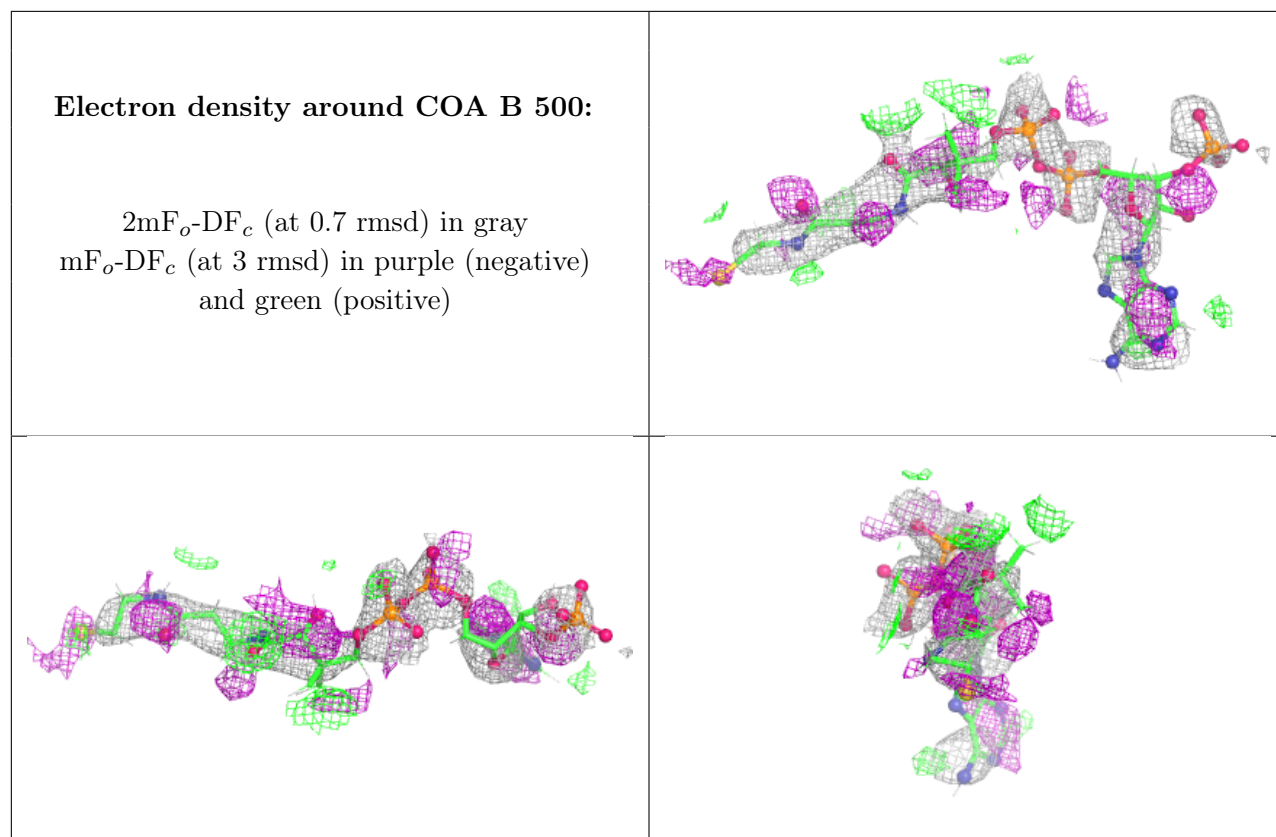
*Continued on next page...*

*Continued from previous page...*

Mol	Type	Chain	Res	Atoms	RSCC	RSR	B-factors( $\text{\AA}^2$ )	Q<0.9
2	COA	B	500	48/48	0.72	0.19	66,119,181,223	0

The following is a graphical depiction of the model fit to experimental electron density of all instances of the Ligand of Interest. In addition, ligands with molecular weight > 250 and outliers as shown on the geometry validation Tables will also be included. Each fit is shown from different orientation to approximate a three-dimensional view.





## 6.5 Other polymers [i](#)

There are no such residues in this entry.