



# wwPDB X-ray Structure Validation Summary Report ⓘ

Jun 16, 2024 – 01:13 PM EDT

PDB ID : 5C80  
Title : X-ray structure uridine phosphorylase from *Vibrio cholerae* in complex with uridine at 2.24 Å resolution  
Authors : Prokofev, I.I.; Lashkov, A.A.; Gabdoulkhakov, A.G.; Betzel, C.; Mikhailov, A.M.  
Deposited on : 2015-06-25  
Resolution : 2.24 Å(reported)

This is a wwPDB X-ray Structure Validation Summary Report for a publicly released PDB entry.

We welcome your comments at [validation@mail.wwpdb.org](mailto:validation@mail.wwpdb.org)

A user guide is available at

<https://www.wwpdb.org/validation/2017/XrayValidationReportHelp>

with specific help available everywhere you see the ⓘ symbol.

The types of validation reports are described at

<http://www.wwpdb.org/validation/2017/FAQs#types>.

---

The following versions of software and data (see [references ⓘ](#)) were used in the production of this report:

MolProbity	:	4.02b-467
Mogul	:	1.8.5 (274361), CSD as541be (2020)
Xtriage (Phenix)	:	1.13
EDS	:	2.37.1
Percentile statistics	:	20191225.v01 (using entries in the PDB archive December 25th 2019)
Refmac	:	5.8.0158
CCP4	:	7.0.044 (Gargrove)
Ideal geometry (proteins)	:	Engh & Huber (2001)
Ideal geometry (DNA, RNA)	:	Parkinson et al. (1996)
Validation Pipeline (wwPDB-VP)	:	2.37.1

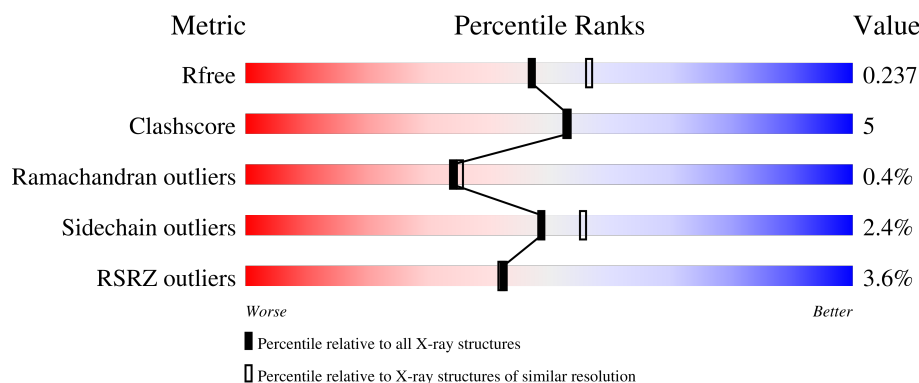
# 1 Overall quality at a glance

The following experimental techniques were used to determine the structure:

*X-RAY DIFFRACTION*

The reported resolution of this entry is 2.24 Å.

Percentile scores (ranging between 0-100) for global validation metrics of the entry are shown in the following graphic. The table shows the number of entries on which the scores are based.




Metric	Whole archive (#Entries)	Similar resolution (#Entries, resolution range(Å))
$R_{free}$	130704	2391 (2.26-2.22)
Clashscore	141614	2539 (2.26-2.22)
Ramachandran outliers	138981	2489 (2.26-2.22)
Sidechain outliers	138945	2490 (2.26-2.22)
RSRZ outliers	127900	2353 (2.26-2.22)

The table below summarises the geometric issues observed across the polymeric chains and their fit to the electron density. The red, orange, yellow and green segments of the lower bar indicate the fraction of residues that contain outliers for  $\geq 3$ , 2, 1 and 0 types of geometric quality criteria respectively. A grey segment represents the fraction of residues that are not modelled. The numeric value for each fraction is indicated below the corresponding segment, with a dot representing fractions  $\leq 5\%$ . The upper red bar (where present) indicates the fraction of residues that have poor fit to the electron density. The numeric value is given above the bar.

Mol	Chain	Length	Quality of chain
1	A	253	<div> <div>4%</div> <div>83%</div> <div>15%</div> <div>..</div> </div>
1	B	253	<div> <div>4%</div> <div>90%</div> <div>9%</div> <div></div> </div>
1	C	253	<div> <div>3%</div> <div>86%</div> <div>13%</div> <div>.</div> </div>
1	D	253	<div> <div>4%</div> <div>89%</div> <div>9%</div> <div>..</div> </div>
1	E	253	<div> <div>4%</div> <div>87%</div> <div>11%</div> <div>..</div> </div>

*Continued on next page...*

*Continued from previous page...*

Mol	Chain	Length	Quality of chain
1	F	253	 3% 88% 10% **

The following table lists non-polymeric compounds, carbohydrate monomers and non-standard residues in protein, DNA, RNA chains that are outliers for geometric or electron-density-fit criteria:

Mol	Type	Chain	Res	Chirality	Geometry	Clashes	Electron density
3	TRS	C	302[A]	-	X	-	-
3	TRS	F	303[A]	-	X	-	-
3	TRS	F	303[B]	-	X	-	-

## 2 Entry composition [i](#)

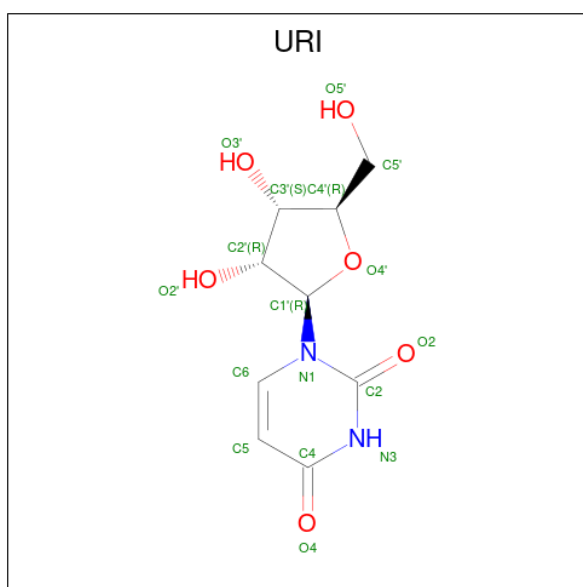
There are 8 unique types of molecules in this entry. The entry contains 12408 atoms, of which 0 are hydrogens and 0 are deuteriums.

In the tables below, the ZeroOcc column contains the number of atoms modelled with zero occupancy, the AltConf column contains the number of residues with at least one atom in alternate conformation and the Trace column contains the number of residues modelled with at most 2 atoms.

- Molecule 1 is a protein called Uridine phosphorylase.

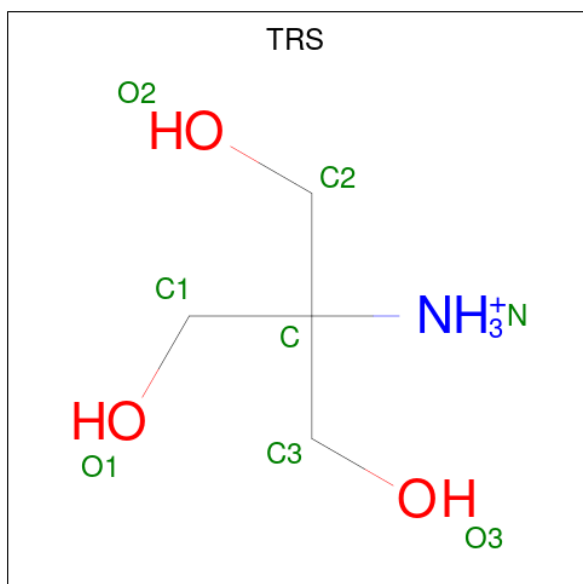
Mol	Chain	Residues	Atoms					ZeroOcc	AltConf	Trace
1	A	251	Total	C	N	O	S	0	2	0
			1893	1186	330	364	13			
1	B	252	Total	C	N	O	S	0	0	0
			1886	1181	328	364	13			
1	C	251	Total	C	N	O	S	0	1	0
			1882	1179	327	362	14			
1	D	249	Total	C	N	O	S	0	3	0
			1880	1180	327	359	14			
1	E	251	Total	C	N	O	S	0	0	0
			1879	1177	327	362	13			
1	F	251	Total	C	N	O	S	0	2	0
			1897	1188	333	363	13			

- Molecule 2 is URIDINE (three-letter code: URI) (formula:  $C_9H_{12}N_2O_6$ ).



Mol	Chain	Residues	Atoms				ZeroOcc	AltConf
2	A	1	Total	C	N	O	0	0
			17	9	2	6		
2	B	1	Total	C	N	O	0	0
			17	9	2	6		
2	C	1	Total	C	N	O	0	0
			17	9	2	6		
2	D	1	Total	C	N	O	0	0
			17	9	2	6		
2	E	1	Total	C	N	O	0	0
			17	9	2	6		
2	F	1	Total	C	N	O	0	0
			17	9	2	6		

- Molecule 3 is 2-AMINO-2-HYDROXYMETHYL-PROPANE-1,3-DIOL (three-letter code: TRS) (formula:  $C_4H_{12}NO_3$ ).



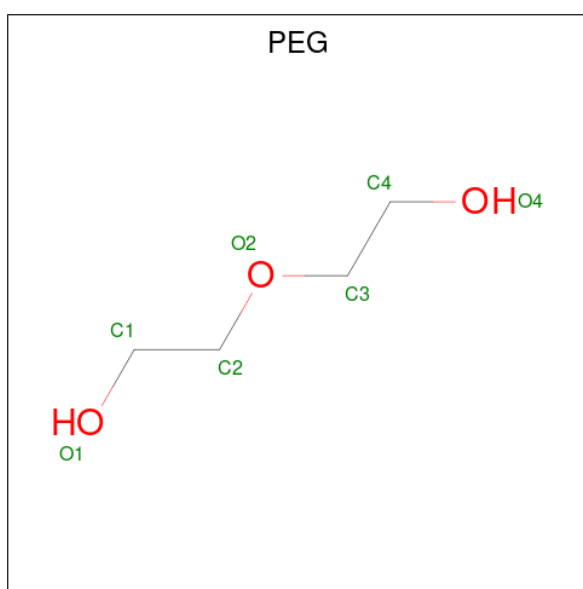
Mol	Chain	Residues	Atoms				ZeroOcc	AltConf
3	A	1	Total	C	N	O	0	1
			16	8	2	6		
3	B	1	Total	C	N	O	0	1
			16	8	2	6		
3	C	1	Total	C	N	O	0	1
			16	8	2	6		
3	D	1	Total	C	N	O	0	1
			16	8	2	6		
3	D	1	Total	C	N	O	0	0
			8	4	1	3		

*Continued on next page...*

Continued from previous page...

Mol	Chain	Residues	Atoms				ZeroOcc	AltConf
3	E	1	Total	C	N	O	0	1
			16	8	2	6		
3	F	1	Total	C	N	O	0	0
			8	4	1	3		
3	F	1	Total	C	N	O	0	1
			16	8	2	6		
3	F	1	Total	C	N	O	0	0
			8	4	1	3		

- Molecule 4 is DI(HYDROXYETHYL)ETHER (three-letter code: PEG) (formula: C<sub>4</sub>H<sub>10</sub>O<sub>3</sub>).



Mol	Chain	Residues	Atoms			ZeroOcc	AltConf
4	A	1	Total	C	O	0	0
			7	4	3		
4	B	1	Total	C	O	0	0
			7	4	3		
4	C	1	Total	C	O	0	0
			7	4	3		

- Molecule 5 is CHLORIDE ION (three-letter code: CL) (formula: Cl).

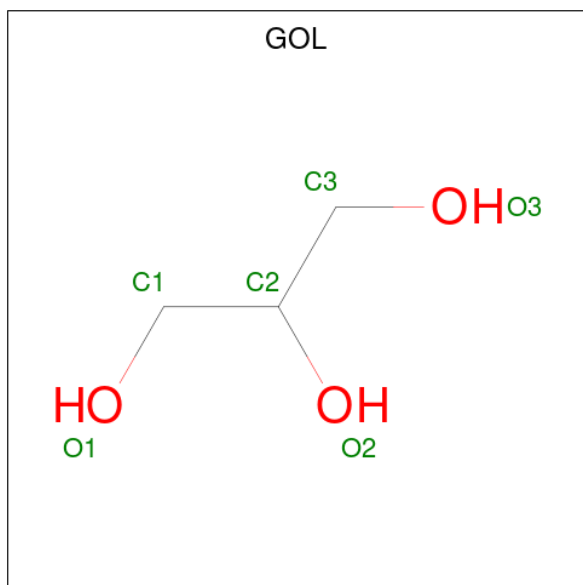
Mol	Chain	Residues	Atoms		ZeroOcc	AltConf
5	A	2	Total	Cl	0	0
			2	2		
5	B	1	Total	Cl	0	0
			1	1		

Continued on next page...

Continued from previous page...

Mol	Chain	Residues	Atoms		ZeroOcc	AltConf
5	C	1	Total	Cl	0	0
			1	1		
5	D	1	Total	Cl	0	0
			1	1		
5	F	1	Total	Cl	0	0
			1	1		

- Molecule 6 is GLYCEROL (three-letter code: GOL) (formula:  $C_3H_8O_3$ ).



Mol	Chain	Residues	Atoms			ZeroOcc	AltConf
6	B	1	Total	C	O	0	0
			6	3	3		
6	D	1	Total	C	O	0	0
			6	3	3		
6	F	1	Total	C	O	0	0
			6	3	3		

- Molecule 7 is SODIUM ION (three-letter code: NA) (formula: Na).

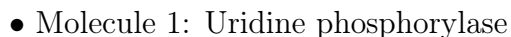
Mol	Chain	Residues	Atoms		ZeroOcc	AltConf
7	B	1	Total	Na	0	0
			1	1		
7	F	1	Total	Na	0	0
			1	1		

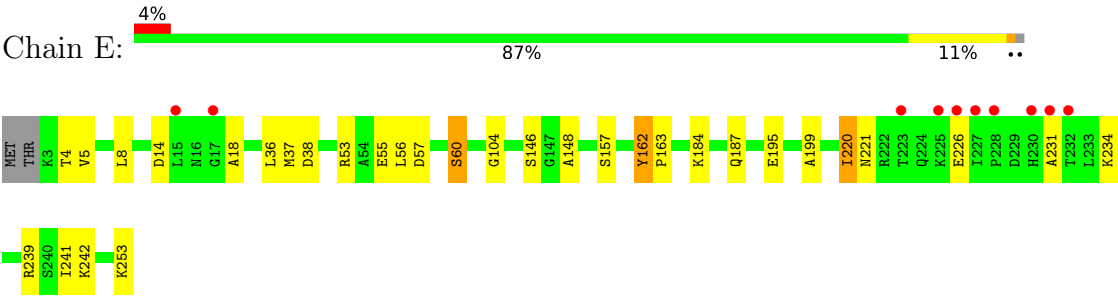
- Molecule 8 is water.

Mol	Chain	Residues	Atoms		ZeroOcc	AltConf
8	A	136	Total 136	O 136	0	0
8	B	141	Total 141	O 141	0	0
8	C	129	Total 129	O 129	0	0
8	D	134	Total 134	O 134	0	0
8	E	134	Total 134	O 134	0	0
8	F	148	Total 148	O 148	0	0

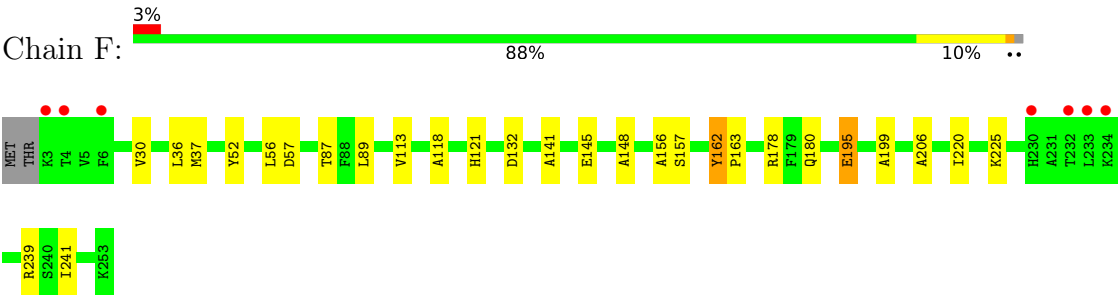


- Molecule 1: Uridine phosphorylase





● Molecule 1: Uridine phosphorylase



## 4 Data and refinement statistics

Property	Value	Source
Space group	P 1	Depositor
Cell constants a, b, c, $\alpha$ , $\beta$ , $\gamma$	61.26Å 73.11Å 83.14Å 71.81° 77.19° 85.69°	Depositor
Resolution (Å)	45.47 – 2.24 45.26 – 2.24	Depositor EDS
% Data completeness (in resolution range)	90.9 (45.47-2.24) 90.9 (45.26-2.24)	Depositor EDS
$R_{merge}$	0.06	Depositor
$R_{sym}$	(Not available)	Depositor
$\langle I/\sigma(I) \rangle$ <sup>1</sup>	1.15 (at 2.24Å)	Xtriage
Refinement program	REFMAC 5.7.0032	Depositor
R, $R_{free}$	0.168 , 0.237 0.169 , 0.237	Depositor DCC
$R_{free}$ test set	2849 reflections (4.90%)	wwPDB-VP
Wilson B-factor (Å <sup>2</sup> )	27.8	Xtriage
Anisotropy	0.065	Xtriage
Bulk solvent $k_{sol}$ (e/Å <sup>3</sup> ), $B_{sol}$ (Å <sup>2</sup> )	0.40 , 67.6	EDS
L-test for twinning <sup>2</sup>	$\langle  L  \rangle = 0.50$ , $\langle L^2 \rangle = 0.34$	Xtriage
Estimated twinning fraction	No twinning to report.	Xtriage
$F_o, F_c$ correlation	0.95	EDS
Total number of atoms	12408	wwPDB-VP
Average B, all atoms (Å <sup>2</sup> )	30.0	wwPDB-VP

Xtriage's analysis on translational NCS is as follows: *The largest off-origin peak in the Patterson function is 5.37% of the height of the origin peak. No significant pseudotranslation is detected.*

<sup>1</sup>Intensities estimated from amplitudes.

<sup>2</sup>Theoretical values of  $\langle |L| \rangle$ ,  $\langle L^2 \rangle$  for acentric reflections are 0.5, 0.333 respectively for untwinned datasets, and 0.375, 0.2 for perfectly twinned datasets.

## 5 Model quality

### 5.1 Standard geometry

Bond lengths and bond angles in the following residue types are not validated in this section: CL, URI, TRS, GOL, PEG, NA

The Z score for a bond length (or angle) is the number of standard deviations the observed value is removed from the expected value. A bond length (or angle) with  $|Z| > 5$  is considered an outlier worth inspection. RMSZ is the root-mean-square of all Z scores of the bond lengths (or angles).

Mol	Chain	Bond lengths		Bond angles	
		RMSZ	$\# Z  > 5$	RMSZ	$\# Z  > 5$
1	A	0.47	0/1930	0.68	0/2615
1	B	0.49	0/1917	0.65	0/2599
1	C	0.49	0/1916	0.69	0/2597
1	D	0.49	0/1916	0.63	0/2594
1	E	0.46	0/1910	0.63	0/2589
1	F	0.50	0/1932	0.66	0/2618
All	All	0.48	0/11521	0.66	0/15612

There are no bond length outliers.

There are no bond angle outliers.

There are no chirality outliers.

There are no planarity outliers.

### 5.2 Too-close contacts

In the following table, the Non-H and H(model) columns list the number of non-hydrogen atoms and hydrogen atoms in the chain respectively. The H(added) column lists the number of hydrogen atoms added and optimized by MolProbity. The Clashes column lists the number of clashes within the asymmetric unit, whereas Symm-Clashes lists symmetry-related clashes.

Mol	Chain	Non-H	H(model)	H(added)	Clashes	Symm-Clashes
1	A	1893	0	1902	30	0
1	B	1886	0	1890	13	0
1	C	1882	0	1888	19	0
1	D	1880	0	1895	14	0
1	E	1879	0	1883	14	0
1	F	1897	0	1902	18	0
2	A	17	0	12	1	0

*Continued on next page...*

*Continued from previous page...*

Mol	Chain	Non-H	H(model)	H(added)	Clashes	Symm-Clashes
2	B	17	0	12	1	0
2	C	17	0	12	1	0
2	D	17	0	12	1	0
2	E	17	0	12	1	0
2	F	17	0	12	1	0
3	A	16	0	24	3	0
3	B	16	0	24	5	0
3	C	16	0	24	1	0
3	D	24	0	36	2	0
3	E	16	0	24	3	0
3	F	32	0	48	6	0
4	A	7	0	10	1	0
4	B	7	0	10	2	0
4	C	7	0	10	2	0
5	A	2	0	0	0	0
5	B	1	0	0	0	0
5	C	1	0	0	0	0
5	D	1	0	0	0	0
5	F	1	0	0	0	0
6	B	6	0	8	0	0
6	D	6	0	8	0	0
6	F	6	0	8	0	0
7	B	1	0	0	0	0
7	F	1	0	0	0	0
8	A	136	0	0	4	0
8	B	141	0	0	3	0
8	C	129	0	0	4	0
8	D	134	0	0	1	0
8	E	134	0	0	7	0
8	F	148	0	0	6	0
All	All	12408	0	11666	125	0

The all-atom clashscore is defined as the number of clashes found per 1000 atoms (including hydrogen atoms). The all-atom clashscore for this structure is 5.

The worst 5 of 125 close contacts within the same asymmetric unit are listed below, sorted by their clash magnitude.

Atom-1	Atom-2	Interatomic distance (Å)	Clash overlap (Å)
3:A:302[B]:TRS:O3	8:A:401:HOH:O	1.60	1.17
3:F:303[B]:TRS:H32	8:F:401:HOH:O	1.48	1.13
1:A:206:ALA:HA	3:A:302[A]:TRS:H31	1.55	0.87

*Continued on next page...*

*Continued from previous page...*

Atom-1	Atom-2	Interatomic distance (Å)	Clash overlap (Å)
1:F:206:ALA:HA	3:F:303[A]:TRS:H11	1.56	0.86
3:E:302[B]:TRS:O2	8:E:401:HOH:O	1.93	0.86

There are no symmetry-related clashes.

## 5.3 Torsion angles [i](#)

### 5.3.1 Protein backbone [i](#)

In the following table, the Percentiles column shows the percent Ramachandran outliers of the chain as a percentile score with respect to all X-ray entries followed by that with respect to entries of similar resolution.

The Analysed column shows the number of residues for which the backbone conformation was analysed, and the total number of residues.

Mol	Chain	Analysed	Favoured	Allowed	Outliers	Percentiles	
1	A	251/253 (99%)	245 (98%)	5 (2%)	1 (0%)	34	35
1	B	250/253 (99%)	240 (96%)	9 (4%)	1 (0%)	34	35
1	C	250/253 (99%)	244 (98%)	5 (2%)	1 (0%)	34	35
1	D	248/253 (98%)	238 (96%)	9 (4%)	1 (0%)	34	35
1	E	249/253 (98%)	246 (99%)	2 (1%)	1 (0%)	34	35
1	F	251/253 (99%)	246 (98%)	4 (2%)	1 (0%)	34	35
All	All	1499/1518 (99%)	1459 (97%)	34 (2%)	6 (0%)	34	35

5 of 6 Ramachandran outliers are listed below:

Mol	Chain	Res	Type
1	C	162	TYR
1	D	162	TYR
1	E	162	TYR
1	A	162	TYR
1	B	162	TYR

### 5.3.2 Protein sidechains [i](#)

In the following table, the Percentiles column shows the percent sidechain outliers of the chain as a percentile score with respect to all X-ray entries followed by that with respect to entries of similar

resolution.

The Analysed column shows the number of residues for which the sidechain conformation was analysed, and the total number of residues.

Mol	Chain	Analysed	Rotameric	Outliers	Percentiles	
1	A	203/203 (100%)	199 (98%)	4 (2%)	55	62
1	B	202/203 (100%)	197 (98%)	5 (2%)	47	54
1	C	202/203 (100%)	197 (98%)	5 (2%)	47	54
1	D	202/203 (100%)	197 (98%)	5 (2%)	47	54
1	E	201/203 (99%)	193 (96%)	8 (4%)	31	34
1	F	203/203 (100%)	201 (99%)	2 (1%)	76	82
All	All	1213/1218 (100%)	1184 (98%)	29 (2%)	49	55

5 of 29 residues with a non-rotameric sidechain are listed below:

Mol	Chain	Res	Type
1	D	56	LEU
1	F	57	ASP
1	D	224	GLN
1	E	226	GLU
1	D	220	ILE

Sometimes sidechains can be flipped to improve hydrogen bonding and reduce clashes. All (4) such sidechains are listed below:

Mol	Chain	Res	Type
1	C	224	GLN
1	D	59	GLN
1	D	224	GLN
1	F	187	GLN

### 5.3.3 RNA ⓘ

There are no RNA molecules in this entry.

## 5.4 Non-standard residues in protein, DNA, RNA chains ⓘ

There are no non-standard protein/DNA/RNA residues in this entry.

## 5.5 Carbohydrates [i](#)

There are no monosaccharides in this entry.

## 5.6 Ligand geometry [i](#)

Of 35 ligands modelled in this entry, 8 are monoatomic - leaving 27 for Mogul analysis.

In the following table, the Counts columns list the number of bonds (or angles) for which Mogul statistics could be retrieved, the number of bonds (or angles) that are observed in the model and the number of bonds (or angles) that are defined in the Chemical Component Dictionary. The Link column lists molecule types, if any, to which the group is linked. The Z score for a bond length (or angle) is the number of standard deviations the observed value is removed from the expected value. A bond length (or angle) with  $|Z| > 2$  is considered an outlier worth inspection. RMSZ is the root-mean-square of all Z scores of the bond lengths (or angles).

Mol	Type	Chain	Res	Link	Bond lengths			Bond angles		
					Counts	RMSZ	$\# Z  > 2$	Counts	RMSZ	$\# Z  > 2$
3	TRS	E	302[A]	-	7,7,7	0.40	0	9,9,9	0.61	0
3	TRS	B	302[A]	-	7,7,7	0.48	0	9,9,9	0.76	0
3	TRS	D	302[A]	-	7,7,7	0.31	0	9,9,9	0.44	0
3	TRS	E	302[B]	-	7,7,7	0.36	0	9,9,9	0.49	0
3	TRS	B	302[B]	-	7,7,7	0.42	0	9,9,9	0.68	0
3	TRS	C	302[A]	-	7,7,7	0.43	0	9,9,9	4.70	5 (55%)
3	TRS	D	302[B]	-	7,7,7	0.45	0	9,9,9	0.90	0
6	GOL	B	303	-	5,5,5	0.23	0	5,5,5	0.39	0
3	TRS	C	302[B]	-	7,7,7	0.37	0	9,9,9	0.42	0
6	GOL	D	304	-	5,5,5	0.51	0	5,5,5	0.45	0
2	URI	B	301	-	18,18,18	1.17	1 (5%)	26,26,26	2.08	9 (34%)
2	URI	A	301	-	18,18,18	1.29	2 (11%)	26,26,26	2.19	11 (42%)
2	URI	D	301	-	18,18,18	1.05	1 (5%)	26,26,26	2.17	9 (34%)
3	TRS	F	303[A]	-	7,7,7	0.29	0	9,9,9	4.63	6 (66%)
3	TRS	A	302[A]	-	7,7,7	0.45	0	9,9,9	1.05	0
4	PEG	A	303	-	6,6,6	0.40	0	5,5,5	0.39	0
2	URI	C	301	-	18,18,18	1.23	2 (11%)	26,26,26	2.24	9 (34%)
3	TRS	F	303[B]	-	7,7,7	0.41	0	9,9,9	4.50	6 (66%)
3	TRS	F	304	-	7,7,7	0.40	0	9,9,9	1.01	1 (11%)
3	TRS	A	302[B]	-	7,7,7	0.33	0	9,9,9	0.46	0
4	PEG	C	303	-	6,6,6	0.46	0	5,5,5	0.46	0
2	URI	E	301	-	18,18,18	1.17	2 (11%)	26,26,26	2.21	9 (34%)
2	URI	F	301	-	18,18,18	1.13	1 (5%)	26,26,26	2.12	11 (42%)
3	TRS	D	303	-	7,7,7	0.37	0	9,9,9	1.06	1 (11%)
6	GOL	F	305	-	5,5,5	0.44	0	5,5,5	0.42	0

Mol	Type	Chain	Res	Link	Bond lengths			Bond angles		
					Counts	RMSZ	# Z  > 2	Counts	RMSZ	# Z  > 2
3	TRS	F	302	-	7,7,7	0.40	0	9,9,9	0.77	0
4	PEG	B	304	-	6,6,6	0.35	0	5,5,5	0.51	0

In the following table, the Chirals column lists the number of chiral outliers, the number of chiral centers analysed, the number of these observed in the model and the number defined in the Chemical Component Dictionary. Similar counts are reported in the Torsion and Rings columns. '-' means no outliers of that kind were identified.

Mol	Type	Chain	Res	Link	Chirals	Torsions	Rings
3	TRS	E	302[A]	-	-	6/9/9/9	-
3	TRS	B	302[A]	-	-	6/9/9/9	-
3	TRS	D	302[A]	-	-	3/9/9/9	-
3	TRS	E	302[B]	-	-	0/9/9/9	-
3	TRS	B	302[B]	-	-	7/9/9/9	-
3	TRS	C	302[A]	-	-	6/9/9/9	-
3	TRS	D	302[B]	-	-	3/9/9/9	-
6	GOL	B	303	-	-	0/4/4/4	-
3	TRS	C	302[B]	-	-	8/9/9/9	-
6	GOL	D	304	-	-	2/4/4/4	-
2	URI	B	301	-	-	4/6/22/22	0/2/2/2
2	URI	A	301	-	-	2/6/22/22	0/2/2/2
2	URI	D	301	-	-	4/6/22/22	0/2/2/2
3	TRS	F	303[A]	-	-	6/9/9/9	-
3	TRS	A	302[A]	-	-	3/9/9/9	-
4	PEG	A	303	-	-	3/4/4/4	-
2	URI	C	301	-	-	4/6/22/22	0/2/2/2
3	TRS	F	303[B]	-	-	6/9/9/9	-
3	TRS	F	304	-	-	3/9/9/9	-
3	TRS	A	302[B]	-	-	3/9/9/9	-
4	PEG	C	303	-	-	2/4/4/4	-
2	URI	E	301	-	-	4/6/22/22	0/2/2/2
2	URI	F	301	-	-	4/6/22/22	0/2/2/2
3	TRS	D	303	-	-	2/9/9/9	-
6	GOL	F	305	-	-	2/4/4/4	-
3	TRS	F	302	-	-	3/9/9/9	-
4	PEG	B	304	-	-	3/4/4/4	-

The worst 5 of 9 bond length outliers are listed below:

Mol	Chain	Res	Type	Atoms	Z	Observed(Å)	Ideal(Å)
2	C	301	URI	C2-N1	2.57	1.42	1.38
2	A	301	URI	C2-N1	2.55	1.42	1.38
2	A	301	URI	C4-N3	-2.54	1.34	1.38
2	D	301	URI	C2-N1	2.45	1.42	1.38
2	C	301	URI	C4-N3	-2.35	1.34	1.38

The worst 5 of 77 bond angle outliers are listed below:

Mol	Chain	Res	Type	Atoms	Z	Observed(°)	Ideal(°)
3	C	302[A]	TRS	C3-C-N	-8.37	83.00	107.98
3	F	303[B]	TRS	C1-C-N	-7.88	84.46	107.98
3	F	303[A]	TRS	C2-C-N	-7.75	84.83	107.98
3	F	303[A]	TRS	C1-C-N	-7.37	85.96	107.98
3	F	303[A]	TRS	C3-C-N	-7.33	86.09	107.98

There are no chirality outliers.

5 of 99 torsion outliers are listed below:

Mol	Chain	Res	Type	Atoms
2	C	301	URI	C2'-C1'-N1-C2
2	D	301	URI	C2'-C1'-N1-C2
3	A	302[A]	TRS	C2-C-C1-O1
3	A	302[A]	TRS	C3-C-C1-O1
3	A	302[B]	TRS	C2-C-C1-O1

There are no ring outliers.

20 monomers are involved in 31 short contacts:

Mol	Chain	Res	Type	Clashes	Symm-Clashes
3	E	302[A]	TRS	1	0
3	B	302[A]	TRS	3	0
3	D	302[A]	TRS	1	0
3	E	302[B]	TRS	2	0
3	B	302[B]	TRS	2	0
3	C	302[A]	TRS	1	0
3	D	302[B]	TRS	1	0
2	B	301	URI	1	0
2	A	301	URI	1	0
2	D	301	URI	1	0
3	F	303[A]	TRS	3	0

*Continued on next page...*

*Continued from previous page...*

Mol	Chain	Res	Type	Clashes	Symm-Clashes
3	A	302[A]	TRS	1	0
4	A	303	PEG	1	0
2	C	301	URI	1	0
3	F	303[B]	TRS	3	0
3	A	302[B]	TRS	2	0
4	C	303	PEG	2	0
2	E	301	URI	1	0
2	F	301	URI	1	0
4	B	304	PEG	2	0

## 5.7 Other polymers [i](#)

There are no such residues in this entry.

## 5.8 Polymer linkage issues [i](#)

There are no chain breaks in this entry.

## 6 Fit of model and data [i](#)

### 6.1 Protein, DNA and RNA chains [i](#)

In the following table, the column labelled ‘#RSRZ> 2’ contains the number (and percentage) of RSRZ outliers, followed by percent RSRZ outliers for the chain as percentile scores relative to all X-ray entries and entries of similar resolution. The OWAB column contains the minimum, median, 95<sup>th</sup> percentile and maximum values of the occupancy-weighted average B-factor per residue. The column labelled ‘Q< 0.9’ lists the number of (and percentage) of residues with an average occupancy less than 0.9.

Mol	Chain	Analysed	<RSRZ>	#RSRZ>2	OWAB(Å <sup>2</sup> )	Q<0.9
1	A	251/253 (99%)	0.00	10 (3%) 38 38	16, 27, 55, 78	0
1	B	252/253 (99%)	-0.14	10 (3%) 38 38	15, 25, 54, 90	0
1	C	251/253 (99%)	-0.14	8 (3%) 47 47	15, 26, 51, 77	0
1	D	249/253 (98%)	-0.13	9 (3%) 42 42	17, 27, 52, 95	0
1	E	251/253 (99%)	0.01	10 (3%) 38 38	18, 30, 58, 97	0
1	F	251/253 (99%)	-0.27	7 (2%) 53 53	15, 25, 45, 86	0
All	All	1505/1518 (99%)	-0.11	54 (3%) 42 42	15, 27, 55, 97	0

The worst 5 of 54 RSRZ outliers are listed below:

Mol	Chain	Res	Type	RSRZ
1	E	227	ILE	7.8
1	D	228	PRO	6.3
1	B	2	THR	5.9
1	A	230	HIS	5.3
1	C	253	LYS	4.9

### 6.2 Non-standard residues in protein, DNA, RNA chains [i](#)

There are no non-standard protein/DNA/RNA residues in this entry.

### 6.3 Carbohydrates [i](#)

There are no monosaccharides in this entry.

## 6.4 Ligands ⓘ

In the following table, the Atoms column lists the number of modelled atoms in the group and the number defined in the chemical component dictionary. The B-factors column lists the minimum, median, 95<sup>th</sup> percentile and maximum values of B factors of atoms in the group. The column labelled 'Q< 0.9' lists the number of atoms with occupancy less than 0.9.

Mol	Type	Chain	Res	Atoms	RSCC	RSR	B-factors(Å <sup>2</sup> )	Q<0.9
6	GOL	F	305	6/6	0.82	0.19	44,47,50,53	0
6	GOL	B	303	6/6	0.85	0.25	55,55,56,56	0
3	TRS	E	302[A]	8/8	0.87	0.23	13,14,15,16	8
3	TRS	E	302[B]	8/8	0.87	0.23	23,25,26,26	8
3	TRS	F	304	8/8	0.89	0.12	30,31,32,32	0
4	PEG	B	304	7/7	0.90	0.15	42,46,47,49	0
4	PEG	A	303	7/7	0.91	0.14	44,45,47,50	0
4	PEG	C	303	7/7	0.91	0.14	36,38,40,41	0
3	TRS	B	302[A]	8/8	0.93	0.17	7,7,7,7	8
3	TRS	B	302[B]	8/8	0.93	0.17	9,10,10,10	8
3	TRS	C	302[A]	8/8	0.93	0.16	10,11,12,12	8
6	GOL	D	304	6/6	0.93	0.12	25,27,27,28	0
3	TRS	C	302[B]	8/8	0.93	0.16	15,16,16,17	8
3	TRS	F	302	8/8	0.94	0.13	29,31,31,31	0
3	TRS	D	303	8/8	0.94	0.12	22,24,25,28	0
3	TRS	D	302[A]	8/8	0.94	0.14	21,22,22,23	8
3	TRS	D	302[B]	8/8	0.94	0.14	14,15,15,16	8
2	URI	E	301	17/17	0.95	0.11	24,26,30,34	0
3	TRS	F	303[A]	8/8	0.95	0.17	8,9,9,9	8
3	TRS	F	303[B]	8/8	0.95	0.17	15,16,16,16	8
3	TRS	A	302[A]	8/8	0.95	0.14	7,7,7,7	8
3	TRS	A	302[B]	8/8	0.95	0.14	15,15,15,16	8
2	URI	C	301	17/17	0.96	0.10	19,23,25,26	0
2	URI	D	301	17/17	0.96	0.10	25,26,28,32	0
5	CL	C	304	1/1	0.96	0.10	56,56,56,56	0
2	URI	A	301	17/17	0.96	0.10	21,23,27,30	0
2	URI	F	301	17/17	0.96	0.12	24,27,33,41	0
2	URI	B	301	17/17	0.96	0.10	27,29,37,37	0
5	CL	F	306	1/1	0.97	0.12	44,44,44,44	0
5	CL	A	305	1/1	0.97	0.04	53,53,53,53	0
5	CL	A	304	1/1	0.97	0.11	41,41,41,41	0
5	CL	D	305	1/1	0.97	0.06	55,55,55,55	0
7	NA	F	307	1/1	0.97	0.09	36,36,36,36	0
7	NA	B	306	1/1	0.98	0.16	26,26,26,26	0
5	CL	B	305	1/1	0.99	0.11	45,45,45,45	0

## 6.5 Other polymers [i](#)

There are no such residues in this entry.