



# wwPDB X-ray Structure Validation Summary Report ⓘ

Jun 24, 2025 – 12:08 PM EDT

PDB ID : 9D7J / pdb\_00009d7j  
Title : Clostridium acetobutylicum alcohol dehydrogenase bound to NADP+  
Authors : Madzelan, P.; Wilson, M.A.  
Deposited on : 2024-08-16  
Resolution : 1.39 Å(reported)

This is a wwPDB X-ray Structure Validation Summary Report for a publicly released PDB entry.

We welcome your comments at [validation@mail.wwpdb.org](mailto:validation@mail.wwpdb.org)

A user guide is available at

<https://www.wwpdb.org/validation/2017/XrayValidationReportHelp>

with specific help available everywhere you see the ⓘ symbol.

The types of validation reports are described at

<http://www.wwpdb.org/validation/2017/FAQs#types>.

---

The following versions of software and data (see [references ⓘ](#)) were used in the production of this report:

MolProbity : 4-5-2 with Phenix2.0rc1  
Mogul : 2022.3.0, CSD as543be (2022)  
Xtriage (Phenix) : 2.0rc1  
EDS : 3.0  
buster-report : 1.1.7 (2018)  
Percentile statistics : 20231227.v01 (using entries in the PDB archive December 27th 2023)  
CCP4 : 9.0.006 (Gargrove)  
Density-Fitness : 1.0.12  
Ideal geometry (proteins) : Engh & Huber (2001)  
Ideal geometry (DNA, RNA) : Parkinson et al. (1996)  
Validation Pipeline (wwPDB-VP) : 2.44

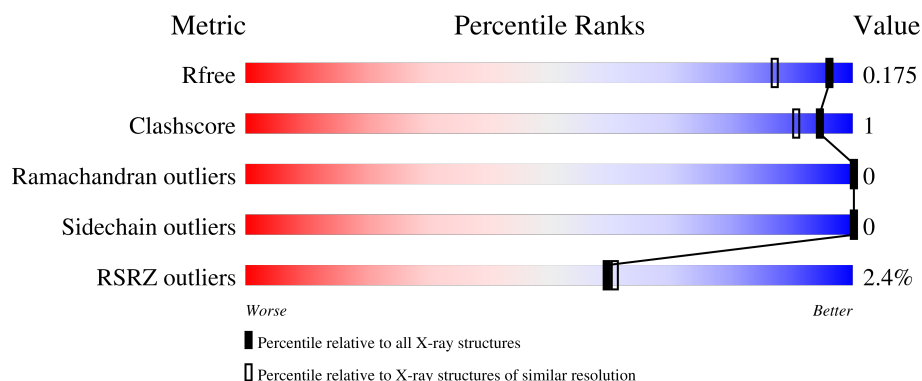
# 1 Overall quality at a glance

The following experimental techniques were used to determine the structure:

*X-RAY DIFFRACTION*

The reported resolution of this entry is 1.39 Å.

Percentile scores (ranging between 0-100) for global validation metrics of the entry are shown in the following graphic. The table shows the number of entries on which the scores are based.



Metric	Whole archive (#Entries)	Similar resolution (#Entries, resolution range(Å))
$R_{free}$	164625	2247 (1.40-1.40)
Clashscore	180529	2446 (1.40-1.40)
Ramachandran outliers	177936	2398 (1.40-1.40)
Sidechain outliers	177891	2397 (1.40-1.40)
RSRZ outliers	164620	2246 (1.40-1.40)

The table below summarises the geometric issues observed across the polymeric chains and their fit to the electron density. The red, orange, yellow and green segments of the lower bar indicate the fraction of residues that contain outliers for  $\geq 3$ , 2, 1 and 0 types of geometric quality criteria respectively. A grey segment represents the fraction of residues that are not modelled. The numeric value for each fraction is indicated below the corresponding segment, with a dot representing fractions  $\leq 5\%$ . The upper red bar (where present) indicates the fraction of residues that have poor fit to the electron density. The numeric value is given above the bar.

Mol	Chain	Length	Quality of chain
1	A	271	
1	B	271	

## 2 Entry composition

There are 4 unique types of molecules in this entry. The entry contains 8607 atoms, of which 4111 are hydrogens and 0 are deuteriums.

In the tables below, the ZeroOcc column contains the number of atoms modelled with zero occupancy, the AltConf column contains the number of residues with at least one atom in alternate conformation and the Trace column contains the number of residues modelled with at most 2 atoms.

- Molecule 1 is a protein called Oxidoreductase.

Mol	Chain	Residues	Atoms							ZeroOcc	AltConf	Trace
1	A	235	Total	C	H	N	O	S	Se	0	24	0
			4027	1278	2034	329	381	1	4			
1	B	235	Total	C	H	N	O	S	Se	0	21	0
			3988	1267	2015	324	377	1	4			

There are 40 discrepancies between the modelled and reference sequences:

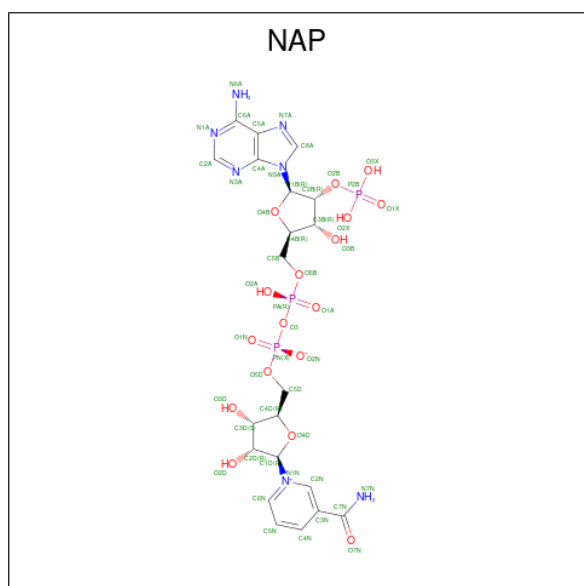
Chain	Residue	Modelled	Actual	Comment	Reference
A	-19	MSE	-	initiating methionine	UNP Q97TU5
A	-18	GLY	-	expression tag	UNP Q97TU5
A	-17	SER	-	expression tag	UNP Q97TU5
A	-16	SER	-	expression tag	UNP Q97TU5
A	-15	HIS	-	expression tag	UNP Q97TU5
A	-14	HIS	-	expression tag	UNP Q97TU5
A	-13	HIS	-	expression tag	UNP Q97TU5
A	-12	HIS	-	expression tag	UNP Q97TU5
A	-11	HIS	-	expression tag	UNP Q97TU5
A	-10	HIS	-	expression tag	UNP Q97TU5
A	-9	SER	-	expression tag	UNP Q97TU5
A	-8	SER	-	expression tag	UNP Q97TU5
A	-7	GLY	-	expression tag	UNP Q97TU5
A	-6	LEU	-	expression tag	UNP Q97TU5
A	-5	VAL	-	expression tag	UNP Q97TU5
A	-4	PRO	-	expression tag	UNP Q97TU5
A	-3	ARG	-	expression tag	UNP Q97TU5
A	-2	GLY	-	expression tag	UNP Q97TU5
A	-1	SER	-	expression tag	UNP Q97TU5
A	0	HIS	-	expression tag	UNP Q97TU5
B	-19	MSE	-	initiating methionine	UNP Q97TU5
B	-18	GLY	-	expression tag	UNP Q97TU5
B	-17	SER	-	expression tag	UNP Q97TU5
B	-16	SER	-	expression tag	UNP Q97TU5
B	-15	HIS	-	expression tag	UNP Q97TU5

*Continued on next page...*

Continued from previous page...

Chain	Residue	Modelled	Actual	Comment	Reference
B	-14	HIS	-	expression tag	UNP Q97TU5
B	-13	HIS	-	expression tag	UNP Q97TU5
B	-12	HIS	-	expression tag	UNP Q97TU5
B	-11	HIS	-	expression tag	UNP Q97TU5
B	-10	HIS	-	expression tag	UNP Q97TU5
B	-9	SER	-	expression tag	UNP Q97TU5
B	-8	SER	-	expression tag	UNP Q97TU5
B	-7	GLY	-	expression tag	UNP Q97TU5
B	-6	LEU	-	expression tag	UNP Q97TU5
B	-5	VAL	-	expression tag	UNP Q97TU5
B	-4	PRO	-	expression tag	UNP Q97TU5
B	-3	ARG	-	expression tag	UNP Q97TU5
B	-2	GLY	-	expression tag	UNP Q97TU5
B	-1	SER	-	expression tag	UNP Q97TU5
B	0	HIS	-	expression tag	UNP Q97TU5

- Molecule 2 is NADP NICOTINAMIDE-ADENINE-DINUCLEOTIDE PHOSPHATE (CCD ID: NAP) (formula:  $C_{21}H_{28}N_7O_{17}P_3$ ) (labeled as "Ligand of Interest" by depositor).



Mol	Chain	Residues	Atoms						ZeroOcc	AltConf
2	A	1	Total	C	H	N	O	P	0	0
			73	21	25	7	17	3		
2	B	1	Total	C	H	N	O	P	0	0
			73	21	25	7	17	3		

- Molecule 3 is 1,2-ETHANEDIOL (CCD ID: EDO) (formula:  $C_2H_6O_2$ ).



Mol	Chain	Residues	Atoms				ZeroOcc	AltConf
3	A	1	Total	C	H	O	0	0
			10	2	6	2		
3	B	1	Total	C	H	O	0	0
			10	2	6	2		

- Molecule 4 is water.

Mol	Chain	Residues	Atoms		ZeroOcc	AltConf
4	A	203	Total	O	0	2
			203	203		
4	B	223	Total	O	0	3
			223	223		



- Molecule 1: Oxidoreductase



## 4 Data and refinement statistics

Property	Value	Source
Space group	P 21 21 21	Depositor
Cell constants a, b, c, $\alpha$ , $\beta$ , $\gamma$	62.26Å 62.59Å 123.58Å 90.00° 90.00° 90.00°	Depositor
Resolution (Å)	34.41 – 1.39 34.41 – 1.39	Depositor EDS
% Data completeness (in resolution range)	96.7 (34.41-1.39) 96.7 (34.41-1.39)	Depositor EDS
$R_{merge}$	(Not available)	Depositor
$R_{sym}$	(Not available)	Depositor
$\langle I/\sigma(I) \rangle$ <sup>1</sup>	1.60 (at 1.39Å)	Xtriage
Refinement program	PHENIX 1.19.2_4158	Depositor
R, $R_{free}$	0.139 , 0.174 0.141 , 0.175	Depositor DCC
$R_{free}$ test set	5036 reflections (5.18%)	wwPDB-VP
Wilson B-factor (Å <sup>2</sup> )	18.5	Xtriage
Anisotropy	0.205	Xtriage
Bulk solvent $k_{sol}$ (e/Å <sup>3</sup> ), $B_{sol}$ (Å <sup>2</sup> )	0.39 , 39.4	EDS
L-test for twinning <sup>2</sup>	$\langle  L  \rangle = 0.49$ , $\langle L^2 \rangle = 0.33$	Xtriage
Estimated twinning fraction	0.000 for k,h,-l	Xtriage
$F_o, F_c$ correlation	0.98	EDS
Total number of atoms	8607	wwPDB-VP
Average B, all atoms (Å <sup>2</sup> )	29.0	wwPDB-VP

Xtriage's analysis on translational NCS is as follows: *The analyses of the Patterson function reveals a significant off-origin peak that is 43.35 % of the origin peak, indicating pseudo-translational symmetry. The chance of finding a peak of this or larger height randomly in a structure without pseudo-translational symmetry is equal to 1.7855e-04. The detected translational NCS is most likely also responsible for the elevated intensity ratio.*

<sup>1</sup>Intensities estimated from amplitudes.

<sup>2</sup>Theoretical values of  $\langle |L| \rangle$ ,  $\langle L^2 \rangle$  for acentric reflections are 0.5, 0.333 respectively for untwinned datasets, and 0.375, 0.2 for perfectly twinned datasets.

## 5 Model quality

### 5.1 Standard geometry

Bond lengths and bond angles in the following residue types are not validated in this section: EDO, NAP

The Z score for a bond length (or angle) is the number of standard deviations the observed value is removed from the expected value. A bond length (or angle) with  $|Z| > 5$  is considered an outlier worth inspection. RMSZ is the root-mean-square of all Z scores of the bond lengths (or angles).

Mol	Chain	Bond lengths		Bond angles	
		RMSZ	$\# Z  > 5$	RMSZ	$\# Z  > 5$
1	A	0.21	0/2105	0.44	0/2825
1	B	0.21	0/2073	0.48	0/2783
All	All	0.21	0/4178	0.46	0/5608

There are no bond length outliers.

There are no bond angle outliers.

There are no chirality outliers.

There are no planarity outliers.

### 5.2 Too-close contacts

In the following table, the Non-H and H(model) columns list the number of non-hydrogen atoms and hydrogen atoms in the chain respectively. The H(added) column lists the number of hydrogen atoms added and optimized by MolProbity. The Clashes column lists the number of clashes within the asymmetric unit, whereas Symm-Clashes lists symmetry-related clashes.

Mol	Chain	Non-H	H(model)	H(added)	Clashes	Symm-Clashes
1	A	1993	2034	1938	5	0
1	B	1973	2015	1923	5	0
2	A	48	25	24	0	0
2	B	48	25	24	0	0
3	A	4	6	6	0	0
3	B	4	6	6	0	0
4	A	203	0	0	2	0
4	B	223	0	0	1	0
All	All	4496	4111	3921	10	0

The all-atom clashscore is defined as the number of clashes found per 1000 atoms (including hydrogen atoms). The all-atom clashscore for this structure is 1.



The worst 5 of 10 close contacts within the same asymmetric unit are listed below, sorted by their clash magnitude.

Atom-1	Atom-2	Interatomic distance (Å)	Clash overlap (Å)
1:B:233:LYS:NZ	4:B:401:HOH:O	2.34	0.61
1:A:38:ARG:NH1	4:A:402:HOH:O	2.35	0.59
1:A:233:LYS:NZ	4:A:403:HOH:O	2.41	0.53
1:B:77:LEU:HB3	1:B:82:ILE:HD11	1.96	0.46
1:A:75:ASP:OD1	1:A:78:LYS:HE2	2.19	0.42

There are no symmetry-related clashes.

## 5.3 Torsion angles [i](#)

### 5.3.1 Protein backbone [i](#)

In the following table, the Percentiles column shows the percent Ramachandran outliers of the chain as a percentile score with respect to all X-ray entries followed by that with respect to entries of similar resolution.

The Analysed column shows the number of residues for which the backbone conformation was analysed, and the total number of residues.

Mol	Chain	Analysed	Favoured	Allowed	Outliers	Percentiles	
1	A	255/271 (94%)	248 (97%)	7 (3%)	0	100	100
1	B	252/271 (93%)	246 (98%)	6 (2%)	0	100	100
All	All	507/542 (94%)	494 (97%)	13 (3%)	0	100	100

There are no Ramachandran outliers to report.

### 5.3.2 Protein sidechains [i](#)

In the following table, the Percentiles column shows the percent sidechain outliers of the chain as a percentile score with respect to all X-ray entries followed by that with respect to entries of similar resolution.

The Analysed column shows the number of residues for which the sidechain conformation was analysed, and the total number of residues.

Mol	Chain	Analysed	Rotameric	Outliers	Percentiles	
1	A	225/232 (97%)	225 (100%)	0	100	100

*Continued on next page...*

*Continued from previous page...*

Mol	Chain	Analysed	Rotameric	Outliers	Percentiles	
1	B	222/232 (96%)	222 (100%)	0	100	100
All	All	447/464 (96%)	447 (100%)	0	100	100

There are no protein residues with a non-rotameric sidechain to report.

Sometimes sidechains can be flipped to improve hydrogen bonding and reduce clashes. All (4) such sidechains are listed below:

Mol	Chain	Res	Type
1	A	87	ASN
1	B	79	ASN
1	B	87	ASN
1	B	98	ASN

### 5.3.3 RNA ⓘ

There are no RNA molecules in this entry.

## 5.4 Non-standard residues in protein, DNA, RNA chains ⓘ

There are no non-standard protein/DNA/RNA residues in this entry.

## 5.5 Carbohydrates ⓘ

There are no oligosaccharides in this entry.

## 5.6 Ligand geometry ⓘ

4 ligands are modelled in this entry.

In the following table, the Counts columns list the number of bonds (or angles) for which Mogul statistics could be retrieved, the number of bonds (or angles) that are observed in the model and the number of bonds (or angles) that are defined in the Chemical Component Dictionary. The Link column lists molecule types, if any, to which the group is linked. The Z score for a bond length (or angle) is the number of standard deviations the observed value is removed from the expected value. A bond length (or angle) with  $|Z| > 2$  is considered an outlier worth inspection. RMSZ is the root-mean-square of all Z scores of the bond lengths (or angles).

Mol	Type	Chain	Res	Link	Bond lengths			Bond angles		
					Counts	RMSZ	$\# Z  > 2$	Counts	RMSZ	$\# Z  > 2$
2	NAP	B	301	-	46,52,52	2.46	12 (26%)	61,80,80	1.93	11 (18%)

Mol	Type	Chain	Res	Link	Bond lengths			Bond angles		
					Counts	RMSZ	# Z  > 2	Counts	RMSZ	# Z  > 2
2	NAP	A	301	-	46,52,52	2.48	13 (28%)	61,80,80	2.11	10 (16%)
3	EDO	A	302	-	3,3,3	0.45	0	2,2,2	0.24	0
3	EDO	B	302	-	3,3,3	0.46	0	2,2,2	0.28	0

In the following table, the Chirals column lists the number of chiral outliers, the number of chiral centers analysed, the number of these observed in the model and the number defined in the Chemical Component Dictionary. Similar counts are reported in the Torsion and Rings columns. '-' means no outliers of that kind were identified.

Mol	Type	Chain	Res	Link	Chirals	Torsions	Rings
2	NAP	B	301	-	-	8/31/67/67	0/5/5/5
2	NAP	A	301	-	-	7/31/67/67	0/5/5/5
3	EDO	A	302	-	-	0/1/1/1	-
3	EDO	B	302	-	-	0/1/1/1	-

The worst 5 of 25 bond length outliers are listed below:

Mol	Chain	Res	Type	Atoms	Z	Observed(Å)	Ideal(Å)
2	B	301	NAP	C3D-C4D	-8.16	1.32	1.53
2	A	301	NAP	C3D-C4D	-8.13	1.32	1.53
2	B	301	NAP	C7N-N7N	6.44	1.44	1.33
2	A	301	NAP	C7N-N7N	6.24	1.44	1.33
2	A	301	NAP	O4D-C1D	-6.21	1.32	1.40

The worst 5 of 21 bond angle outliers are listed below:

Mol	Chain	Res	Type	Atoms	Z	Observed(°)	Ideal(°)
2	A	301	NAP	C1B-N9A-C4A	8.65	141.83	126.64
2	A	301	NAP	N3A-C2A-N1A	-6.71	119.57	128.67
2	B	301	NAP	N3A-C2A-N1A	-6.63	119.67	128.67
2	B	301	NAP	C1B-N9A-C4A	6.58	138.20	126.64
2	A	301	NAP	C5A-C6A-N6A	6.45	130.14	120.31

There are no chirality outliers.

5 of 15 torsion outliers are listed below:

Mol	Chain	Res	Type	Atoms
2	A	301	NAP	PN-O3-PA-O5B
2	A	301	NAP	C5D-O5D-PN-O3
2	A	301	NAP	C5D-O5D-PN-O1N
2	A	301	NAP	C5D-O5D-PN-O2N

*Continued on next page...*

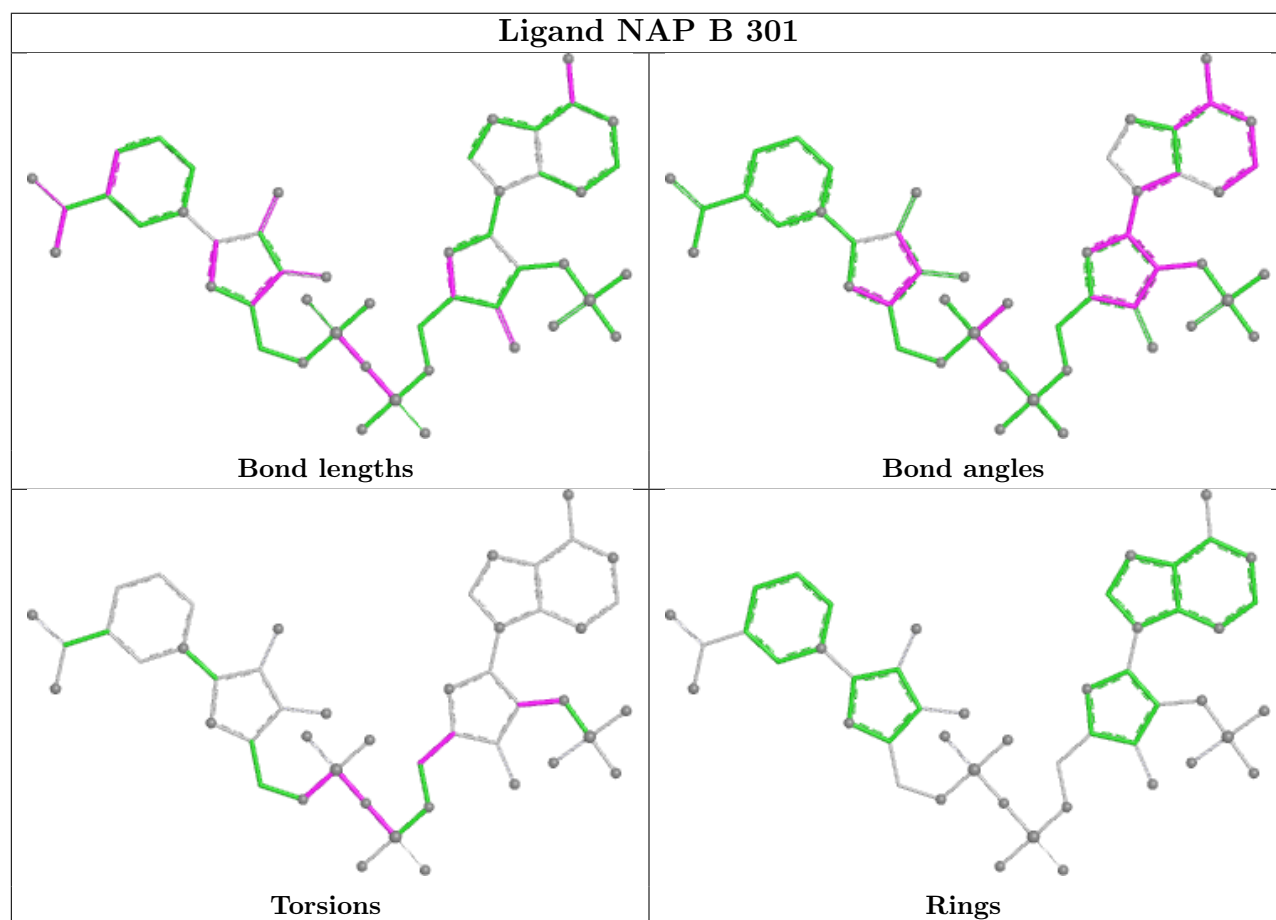
*Continued from previous page...*

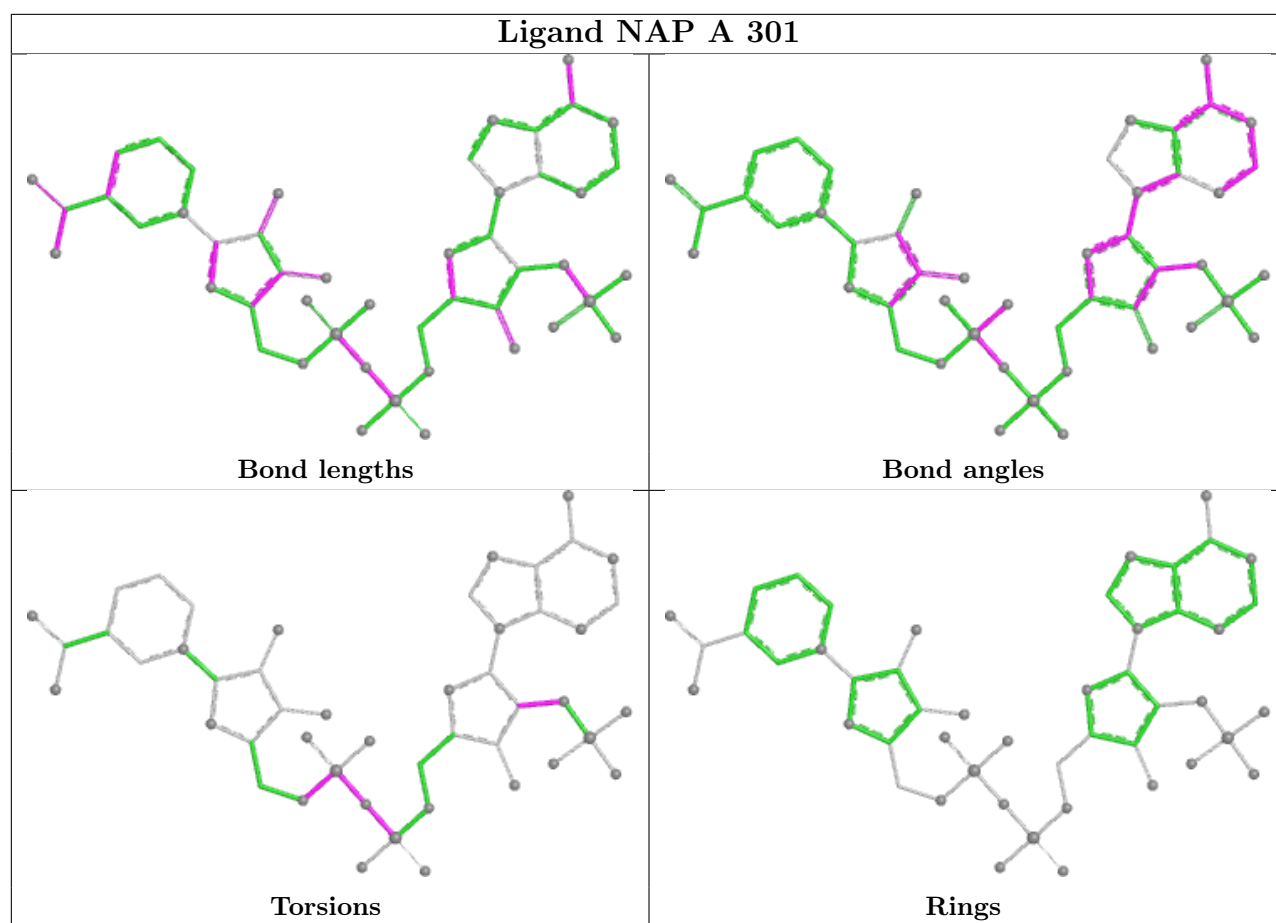
Mol	Chain	Res	Type	Atoms
2	B	301	NAP	PN-O3-PA-O5B

There are no ring outliers.

No monomer is involved in short contacts.

The following is a two-dimensional graphical depiction of Mogul quality analysis of bond lengths, bond angles, torsion angles, and ring geometry for all instances of the Ligand of Interest. In addition, ligands with molecular weight > 250 and outliers as shown on the validation Tables will also be included. For torsion angles, if less than 5% of the Mogul distribution of torsion angles is within 10 degrees of the torsion angle in question, then that torsion angle is considered an outlier. Any bond that is central to one or more torsion angles identified as an outlier by Mogul will be highlighted in the graph. For rings, the root-mean-square deviation (RMSD) between the ring in question and similar rings identified by Mogul is calculated over all ring torsion angles. If the average RMSD is greater than 60 degrees and the minimal RMSD between the ring in question and any Mogul-identified rings is also greater than 60 degrees, then that ring is considered an outlier. The outliers are highlighted in purple. The color gray indicates Mogul did not find sufficient equivalents in the CSD to analyse the geometry.





## 5.7 Other polymers [i](#)

There are no such residues in this entry.

## 5.8 Polymer linkage issues [i](#)

There are no chain breaks in this entry.

## 6 Fit of model and data [i](#)

### 6.1 Protein, DNA and RNA chains [i](#)

In the following table, the column labelled ‘#RSRZ> 2’ contains the number (and percentage) of RSRZ outliers, followed by percent RSRZ outliers for the chain as percentile scores relative to all X-ray entries and entries of similar resolution. The OWAB column contains the minimum, median, 95<sup>th</sup> percentile and maximum values of the occupancy-weighted average B-factor per residue. The column labelled ‘Q< 0.9’ lists the number of (and percentage) of residues with an average occupancy less than 0.9.

Mol	Chain	Analysed	<RSRZ>	#RSRZ>2	OWAB(Å <sup>2</sup> )	Q<0.9
1	A	233/271 (85%)	-0.17	7 (3%) 52 54	11, 25, 58, 92	11 (4%)
1	B	233/271 (85%)	-0.35	4 (1%) 69 70	11, 23, 49, 72	9 (3%)
All	All	466/542 (85%)	-0.26	11 (2%) 59 61	11, 24, 53, 92	20 (4%)

The worst 5 of 11 RSRZ outliers are listed below:

Mol	Chain	Res	Type	RSRZ
1	A	4	TYR	3.9
1	B	205	GLN	3.2
1	B	191	GLU	2.8
1	B	94	TYR	2.8
1	A	205	GLN	2.7

### 6.2 Non-standard residues in protein, DNA, RNA chains [i](#)

There are no non-standard protein/DNA/RNA residues in this entry.

### 6.3 Carbohydrates [i](#)

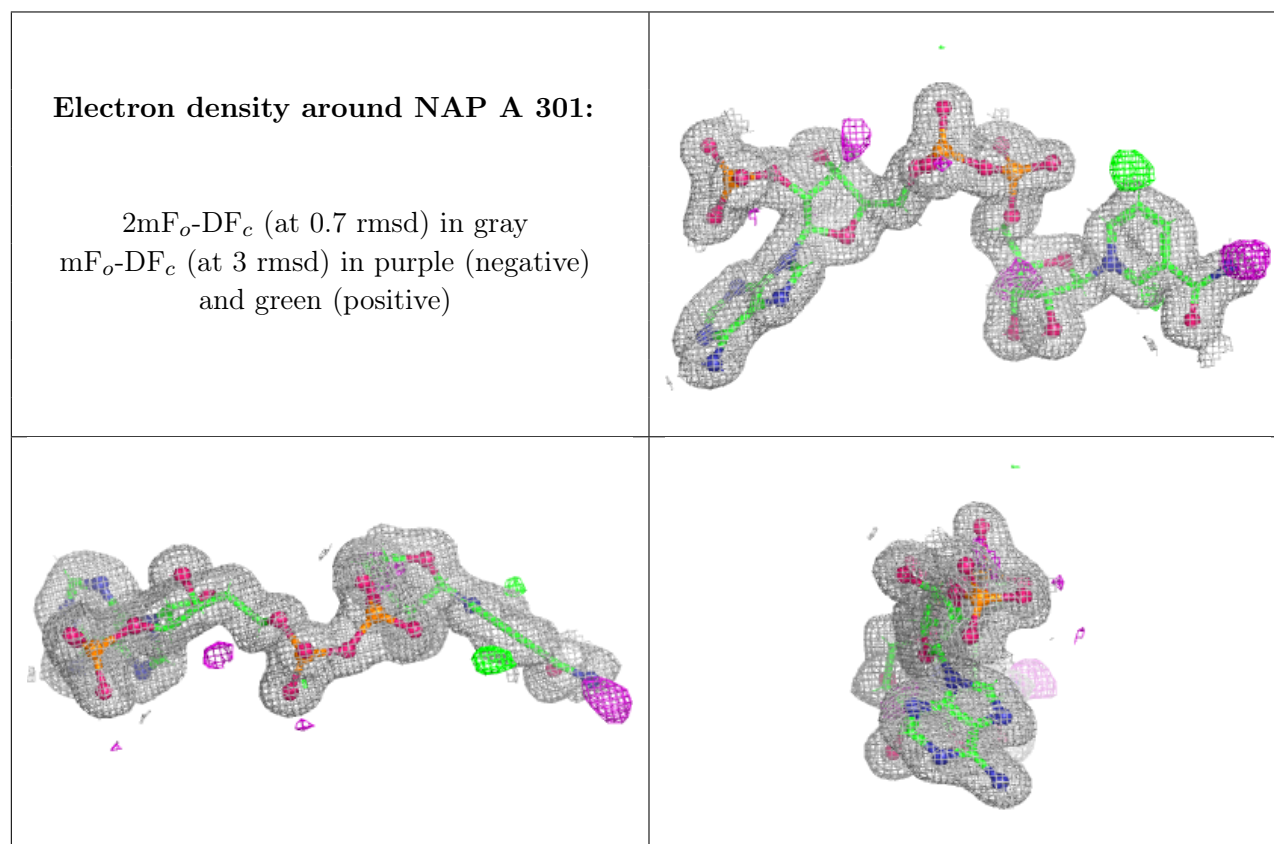
There are no oligosaccharides in this entry.

### 6.4 Ligands [i](#)

In the following table, the Atoms column lists the number of modelled atoms in the group and the number defined in the chemical component dictionary. The B-factors column lists the minimum, median, 95<sup>th</sup> percentile and maximum values of B factors of atoms in the group. The column labelled ‘Q< 0.9’ lists the number of atoms with occupancy less than 0.9.

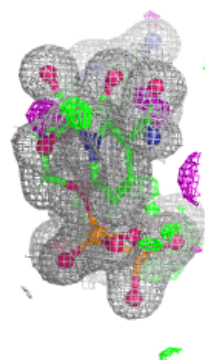
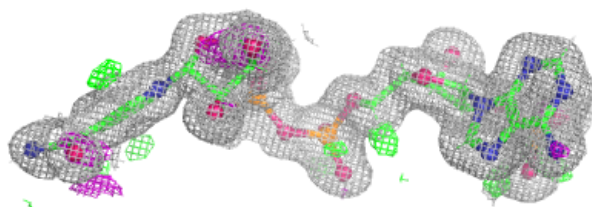
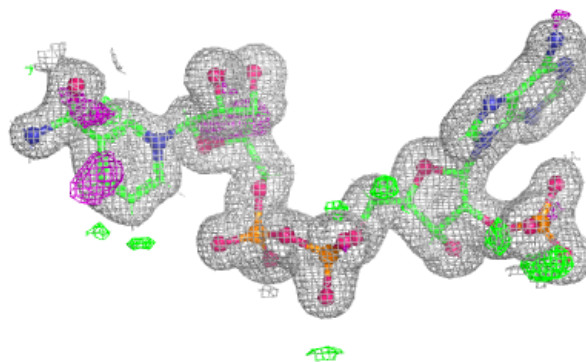
Mol	Type	Chain	Res	Atoms	RSCC	RSR	B-factors( $\text{\AA}^2$ )	Q<0.9
2	NAP	A	301	48/48	0.98	0.05	17,22,30,39	0
2	NAP	B	301	48/48	0.98	0.05	15,20,27,35	0
3	EDO	A	302	4/4	0.98	0.06	23,28,31,34	0
3	EDO	B	302	4/4	0.98	0.05	22,27,29,31	0

The following is a graphical depiction of the model fit to experimental electron density of all instances of the Ligand of Interest. In addition, ligands with molecular weight > 250 and outliers as shown on the geometry validation Tables will also be included. Each fit is shown from different orientation to approximate a three-dimensional view.



**Electron density around NAP B 301:**

$2mF_o-DF_c$  (at 0.7 rmsd) in gray  
 $mF_o-DF_c$  (at 3 rmsd) in purple (negative)  
and green (positive)



## 6.5 Other polymers ⓘ

There are no such residues in this entry.