



# Full wwPDB X-ray Structure Validation Report ⓘ

Nov 16, 2024 – 08:12 PM EST

PDB ID : 4DH5  
Title : Room temperature X-ray structure of cAMP dependent Protein Kinase A catalytic subunit with high Mg<sup>2+</sup>, ADP, Phosphate, and IP20  
Authors : Kovalevsky, A.Y.; Langan, P.  
Deposited on : 2012-01-27  
Resolution : 2.20 Å(reported)

This is a Full wwPDB X-ray Structure Validation Report for a publicly released PDB entry.

We welcome your comments at [validation@mail.wwpdb.org](mailto:validation@mail.wwpdb.org)

A user guide is available at

<https://www.wwpdb.org/validation/2017/XrayValidationReportHelp>

with specific help available everywhere you see the ⓘ symbol.

The types of validation reports are described at

<http://www.wwpdb.org/validation/2017/FAQs#types>.

---

The following versions of software and data (see [references ⓘ](#)) were used in the production of this report:

MolProbity	:	4.02b-467
Mogul	:	2022.3.0, CSD as543be (2022)
Xtriage (Phenix)	:	1.20.1
EDS	:	3.0
buster-report	:	1.1.7 (2018)
Percentile statistics	:	20231227.v01 (using entries in the PDB archive December 27th 2023)
CCP4	:	9.0.003 (Gargrove)
Density-Fitness	:	1.0.11
Ideal geometry (proteins)	:	Engh & Huber (2001)
Ideal geometry (DNA, RNA)	:	Parkinson et al. (1996)
Validation Pipeline (wwPDB-VP)	:	2.39

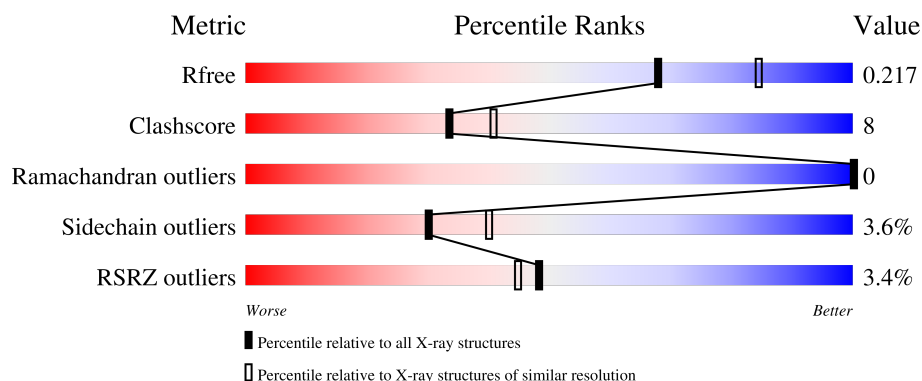
# 1 Overall quality at a glance

The following experimental techniques were used to determine the structure:

*X-RAY DIFFRACTION*

The reported resolution of this entry is 2.20 Å.

Percentile scores (ranging between 0-100) for global validation metrics of the entry are shown in the following graphic. The table shows the number of entries on which the scores are based.



Metric	Whole archive (#Entries)	Similar resolution (#Entries, resolution range(Å))
$R_{free}$	164625	5791 (2.20-2.20)
Clashscore	180529	6634 (2.20-2.20)
Ramachandran outliers	177936	6560 (2.20-2.20)
Sidechain outliers	177891	6561 (2.20-2.20)
RSRZ outliers	164620	5791 (2.20-2.20)

The table below summarises the geometric issues observed across the polymeric chains and their fit to the electron density. The red, orange, yellow and green segments of the lower bar indicate the fraction of residues that contain outliers for  $\geq 3$ , 2, 1 and 0 types of geometric quality criteria respectively. A grey segment represents the fraction of residues that are not modelled. The numeric value for each fraction is indicated below the corresponding segment, with a dot representing fractions  $\leq 5\%$ . The upper red bar (where present) indicates the fraction of residues that have poor fit to the electron density. The numeric value is given above the bar.

Mol	Chain	Length	Quality of chain
1	A	350	<div> <div>3%</div> <div> <div></div> <div>79%</div> <div>13%</div> <div>• •</div> </div> </div>
2	I	20	<div> <div>5%</div> <div> <div></div> <div>70%</div> <div>25%</div> <div>5%</div> </div> </div>

## 2 Entry composition [i](#)

There are 6 unique types of molecules in this entry. The entry contains 3183 atoms, of which 0 are hydrogens and 0 are deuteriums.

In the tables below, the ZeroOcc column contains the number of atoms modelled with zero occupancy, the AltConf column contains the number of residues with at least one atom in alternate conformation and the Trace column contains the number of residues modelled with at most 2 atoms.

- Molecule 1 is a protein called cAMP-dependent protein kinase catalytic subunit alpha.

Mol	Chain	Residues	Atoms						ZeroOcc	AltConf	Trace
1	A	336	Total	C	N	O	P	S	0	0	0
			2781	1800	465	505	3	8			

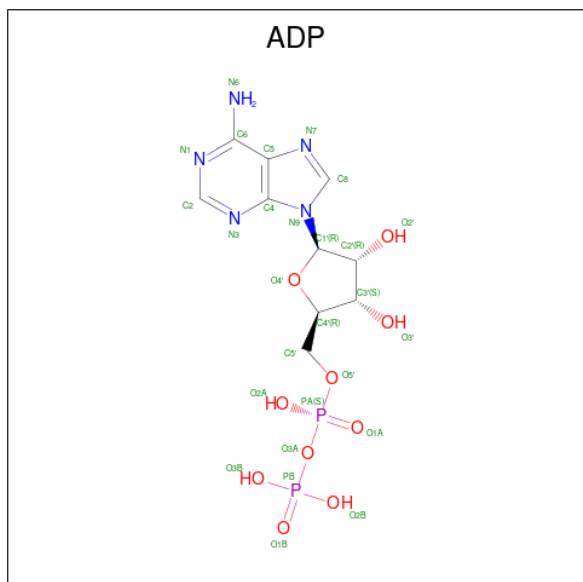
- Molecule 2 is a protein called cAMP-dependent protein kinase inhibitor alpha.

Mol	Chain	Residues	Atoms				ZeroOcc	AltConf	Trace
2	I	20	Total	C	N	O	0	0	0
			157	94	32	31			

- Molecule 3 is MAGNESIUM ION (three-letter code: MG) (formula: Mg).

Mol	Chain	Residues	Atoms		ZeroOcc	AltConf
3	A	2	Total	Mg	0	0
			2	2		

- Molecule 4 is ADENOSINE-5'-DIPHOSPHATE (three-letter code: ADP) (formula: C<sub>10</sub>H<sub>15</sub>N<sub>5</sub>O<sub>10</sub>P<sub>2</sub>).



Mol	Chain	Residues	Atoms					ZeroOcc	AltConf
4	A	1	Total	C	N	O	P	0	0
			27	10	5	10	2		

- Molecule 5 is PHOSPHATE ION (three-letter code: PO4) (formula:  $O_4P$ ).



Mol	Chain	Residues	Atoms			ZeroOcc	AltConf
5	A	1	Total	O	P	0	0
			5	4	1		

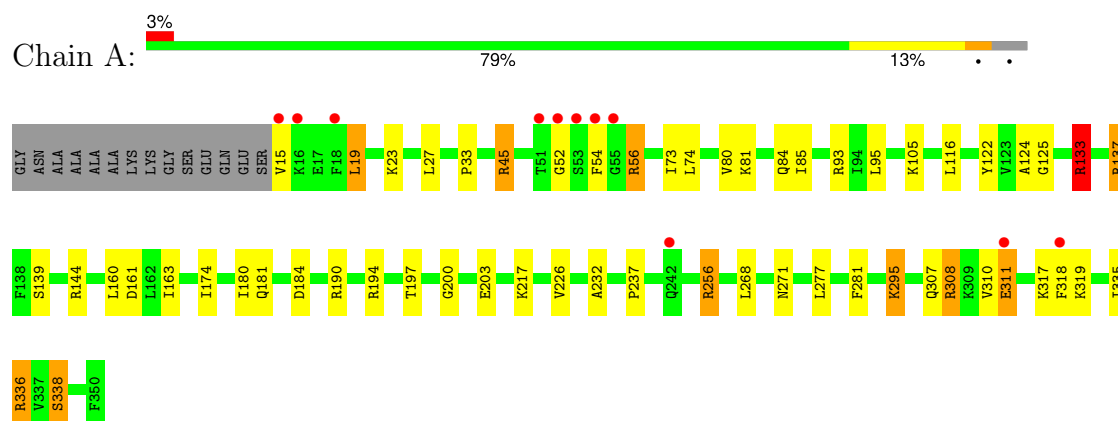
- Molecule 6 is water.

Mol	Chain	Residues	Atoms		ZeroOcc	AltConf
6	A	197	Total	O	0	0
			197	197		
6	I	14	Total	O	0	0
			14	14		

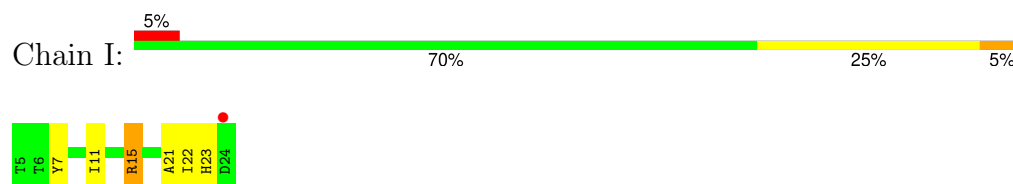
### 3 Residue-property plots [i](#)

These plots are drawn for all protein, RNA, DNA and oligosaccharide chains in the entry. The first graphic for a chain summarises the proportions of the various outlier classes displayed in the second graphic. The second graphic shows the sequence view annotated by issues in geometry and electron density. Residues are color-coded according to the number of geometric quality criteria for which they contain at least one outlier: green = 0, yellow = 1, orange = 2 and red = 3 or more. A red dot above a residue indicates a poor fit to the electron density ( $RSRZ > 2$ ). Stretches of 2 or more consecutive residues without any outlier are shown as a green connector. Residues present in the sample, but not in the model, are shown in grey.

- Molecule 1: cAMP-dependent protein kinase catalytic subunit alpha



- Molecule 2: cAMP-dependent protein kinase inhibitor alpha



## 4 Data and refinement statistics

Property	Value	Source
Space group	P 21 21 21	Depositor
Cell constants a, b, c, $\alpha$ , $\beta$ , $\gamma$	58.90Å 79.63Å 99.49Å 90.00° 90.00° 90.00°	Depositor
Resolution (Å)	20.00 – 2.20 20.00 – 2.20	Depositor EDS
% Data completeness (in resolution range)	(Not available) (20.00-2.20) 88.2 (20.00-2.20)	Depositor EDS
$R_{merge}$	(Not available)	Depositor
$R_{sym}$	(Not available)	Depositor
$\langle I/\sigma(I) \rangle$ <sup>1</sup>	1.98 (at 2.19Å)	Xtriage
Refinement program	CNS	Depositor
R, $R_{free}$	0.187 , 0.222 0.191 , 0.217	Depositor DCC
$R_{free}$ test set	1154 reflections (4.93%)	wwPDB-VP
Wilson B-factor (Å <sup>2</sup> )	32.0	Xtriage
Anisotropy	0.135	Xtriage
Bulk solvent $k_{sol}$ (e/Å <sup>3</sup> ), $B_{sol}$ (Å <sup>2</sup> )	0.31 , 44.4	EDS
L-test for twinning <sup>2</sup>	$\langle  L  \rangle = 0.51$ , $\langle L^2 \rangle = 0.35$	Xtriage
Estimated twinning fraction	No twinning to report.	Xtriage
$F_o, F_c$ correlation	0.95	EDS
Total number of atoms	3183	wwPDB-VP
Average B, all atoms (Å <sup>2</sup> )	37.0	wwPDB-VP

Xtriage's analysis on translational NCS is as follows: *The largest off-origin peak in the Patterson function is 7.45% of the height of the origin peak. No significant pseudotranslation is detected.*

<sup>1</sup>Intensities estimated from amplitudes.

<sup>2</sup>Theoretical values of  $\langle |L| \rangle$ ,  $\langle L^2 \rangle$  for acentric reflections are 0.5, 0.333 respectively for untwinned datasets, and 0.375, 0.2 for perfectly twinned datasets.

## 5 Model quality

### 5.1 Standard geometry

Bond lengths and bond angles in the following residue types are not validated in this section: PO4, ADP, MG, TPO, SEP

The Z score for a bond length (or angle) is the number of standard deviations the observed value is removed from the expected value. A bond length (or angle) with  $|Z| > 5$  is considered an outlier worth inspection. RMSZ is the root-mean-square of all Z scores of the bond lengths (or angles).

Mol	Chain	Bond lengths		Bond angles	
		RMSZ	# Z  >5	RMSZ	# Z  >5
1	A	0.32	0/2818	0.57	0/3793
2	I	0.39	0/159	0.64	0/212
All	All	0.33	0/2977	0.58	0/4005

Chiral center outliers are detected by calculating the chiral volume of a chiral center and verifying if the center is modelled as a planar moiety or with the opposite hand. A planarity outlier is detected by checking planarity of atoms in a peptide group, atoms in a mainchain group or atoms of a sidechain that are expected to be planar.

Mol	Chain	#Chirality outliers	#Planarity outliers
1	A	0	10
2	I	0	1
All	All	0	11

There are no bond length outliers.

There are no bond angle outliers.

There are no chirality outliers.

All (11) planarity outliers are listed below:

Mol	Chain	Res	Type	Group
1	A	133	ARG	Sidechain
1	A	137	ARG	Sidechain
1	A	144	ARG	Sidechain
1	A	190	ARG	Sidechain
1	A	256	ARG	Sidechain
1	A	308	ARG	Sidechain
1	A	336	ARG	Sidechain
1	A	45	ARG	Sidechain
1	A	56	ARG	Sidechain

*Continued on next page...*

*Continued from previous page...*

Mol	Chain	Res	Type	Group
1	A	93	ARG	Sidechain
2	I	15	ARG	Sidechain

## 5.2 Too-close contacts

In the following table, the Non-H and H(model) columns list the number of non-hydrogen atoms and hydrogen atoms in the chain respectively. The H(added) column lists the number of hydrogen atoms added and optimized by MolProbity. The Clashes column lists the number of clashes within the asymmetric unit, whereas Symm-Clashes lists symmetry-related clashes.

Mol	Chain	Non-H	H(model)	H(added)	Clashes	Symm-Clashes
1	A	2781	0	2762	42	0
2	I	157	0	146	5	0
3	A	2	0	0	0	0
4	A	27	0	12	2	0
5	A	5	0	0	1	0
6	A	197	0	0	11	0
6	I	14	0	0	0	0
All	All	3183	0	2920	45	0

The all-atom clashscore is defined as the number of clashes found per 1000 atoms (including hydrogen atoms). The all-atom clashscore for this structure is 8.

All (45) close contacts within the same asymmetric unit are listed below, sorted by their clash magnitude.

Atom-1	Atom-2	Interatomic distance (Å)	Clash overlap (Å)
5:A:404:PO4:O1	2:I:21:ALA:HB2	1.83	0.78
1:A:23:LYS:HE2	6:A:1189:HOH:O	1.86	0.75
1:A:33:PRO:HG2	6:A:1173:HOH:O	1.85	0.75
1:A:52:GLY:HA2	6:A:1158:HOH:O	1.90	0.72
1:A:163:ILE:HG12	1:A:217:LYS:HD3	1.73	0.71
1:A:45:ARG:HD3	1:A:335:ILE:HD12	1.78	0.65
1:A:295:LYS:H	1:A:295:LYS:CD	2.11	0.64
1:A:203:GLU:OE2	2:I:15:ARG:HD3	1.98	0.63
1:A:45:ARG:CD	1:A:335:ILE:HD12	2.30	0.62
1:A:52:GLY:CA	6:A:1158:HOH:O	2.46	0.61
1:A:336:ARG:HH12	1:A:338:SEP:HB3	1.66	0.61
1:A:295:LYS:H	1:A:295:LYS:HD3	1.66	0.61
1:A:271:ASN:HB3	1:A:281:PHE:CD1	2.37	0.60
1:A:295:LYS:HD3	1:A:295:LYS:N	2.18	0.59

*Continued on next page...*



*Continued from previous page...*

Atom-1	Atom-2	Interatomic distance (Å)	Clash overlap (Å)
1:A:319:LYS:HB2	6:A:1029:HOH:O	2.02	0.58
1:A:81:LYS:HG2	6:A:1088:HOH:O	2.04	0.58
1:A:122:TYR:CE2	1:A:124:ALA:HB2	2.39	0.58
1:A:54:PHE:CE1	1:A:84:GLN:HG3	2.39	0.57
1:A:125:GLY:HA3	1:A:174:ILE:O	2.03	0.57
1:A:56:ARG:HD3	6:A:1081:HOH:O	2.06	0.56
1:A:295:LYS:H	1:A:295:LYS:CE	2.22	0.52
1:A:133:ARG:HH21	1:A:133:ARG:HG2	1.76	0.50
1:A:295:LYS:H	1:A:295:LYS:HE3	1.78	0.48
1:A:137:ARG:HD2	1:A:232:ALA:O	2.13	0.47
1:A:23:LYS:O	1:A:27:LEU:HD23	2.14	0.47
1:A:200:GLY:O	2:I:22:ILE:HG22	2.15	0.46
1:A:160:LEU:O	1:A:161:ASP:HB2	2.16	0.46
1:A:45:ARG:NE	1:A:335:ILE:HD12	2.31	0.45
1:A:295:LYS:HE2	6:A:1160:HOH:O	2.17	0.45
1:A:80:VAL:HG22	1:A:85:ILE:HD11	1.99	0.44
1:A:74:LEU:HB2	1:A:116:LEU:HB2	2.01	0.43
1:A:184:ASP:HB2	4:A:403:ADP:O2A	2.19	0.43
1:A:180:ILE:HG22	1:A:181:GLN:N	2.32	0.43
1:A:226:VAL:HG13	1:A:237:PRO:HD2	2.00	0.43
1:A:73:ILE:HD13	1:A:335:ILE:HD11	2.01	0.43
1:A:310:VAL:HG12	1:A:311:GLU:N	2.34	0.43
1:A:133:ARG:HG2	1:A:133:ARG:NH2	2.35	0.42
6:A:1086:HOH:O	2:I:23:HIS:HE1	2.01	0.42
1:A:45:ARG:HD3	1:A:335:ILE:CD1	2.48	0.41
2:I:7:TYR:CZ	2:I:11:ILE:HG13	2.55	0.41
1:A:81:LYS:HD2	6:A:1090:HOH:O	2.19	0.41
1:A:194:ARG:NH2	6:A:1162:HOH:O	2.53	0.41
1:A:15:VAL:HG12	1:A:19:LEU:HD22	2.02	0.41
1:A:52:GLY:HA3	4:A:403:ADP:O2B	2.21	0.41
1:A:307:GLN:O	1:A:308:ARG:HB2	2.22	0.40

There are no symmetry-related clashes.

## 5.3 Torsion angles [i](#)

### 5.3.1 Protein backbone [i](#)

In the following table, the Percentiles column shows the percent Ramachandran outliers of the chain as a percentile score with respect to all X-ray entries followed by that with respect to entries of similar resolution.

The Analysed column shows the number of residues for which the backbone conformation was analysed, and the total number of residues.

Mol	Chain	Analysed	Favoured	Allowed	Outliers	Percentiles	
1	A	331/350 (95%)	313 (95%)	18 (5%)	0	100	100
2	I	18/20 (90%)	18 (100%)	0	0	100	100
All	All	349/370 (94%)	331 (95%)	18 (5%)	0	100	100

There are no Ramachandran outliers to report.

### 5.3.2 Protein sidechains ⓘ

In the following table, the Percentiles column shows the percent sidechain outliers of the chain as a percentile score with respect to all X-ray entries followed by that with respect to entries of similar resolution.

The Analysed column shows the number of residues for which the sidechain conformation was analysed, and the total number of residues.

Mol	Chain	Analysed	Rotameric	Outliers	Percentiles	
1	A	294/302 (97%)	283 (96%)	11 (4%)	29	39
2	I	15/15 (100%)	15 (100%)	0	100	100
All	All	309/317 (98%)	298 (96%)	11 (4%)	30	40

All (11) residues with a non-rotameric sidechain are listed below:

Mol	Chain	Res	Type
1	A	19	LEU
1	A	95	LEU
1	A	105	LYS
1	A	133	ARG
1	A	256	ARG
1	A	268	LEU
1	A	277	LEU
1	A	295	LYS
1	A	311	GLU
1	A	317	LYS
1	A	318	PHE

Sometimes sidechains can be flipped to improve hydrogen bonding and reduce clashes. All (6) such sidechains are listed below:

Mol	Chain	Res	Type
1	A	35	GLN
1	A	36	ASN
1	A	176	GLN
1	A	177	GLN
1	A	307	GLN
2	I	20	ASN

### 5.3.3 RNA ⓘ

There are no RNA molecules in this entry.

## 5.4 Non-standard residues in protein, DNA, RNA chains ⓘ

3 non-standard protein/DNA/RNA residues are modelled in this entry.

In the following table, the Counts columns list the number of bonds (or angles) for which Mogul statistics could be retrieved, the number of bonds (or angles) that are observed in the model and the number of bonds (or angles) that are defined in the Chemical Component Dictionary. The Link column lists molecule types, if any, to which the group is linked. The Z score for a bond length (or angle) is the number of standard deviations the observed value is removed from the expected value. A bond length (or angle) with  $|Z| > 2$  is considered an outlier worth inspection. RMSZ is the root-mean-square of all Z scores of the bond lengths (or angles).

Mol	Type	Chain	Res	Link	Bond lengths			Bond angles		
					Counts	RMSZ	$\# Z  > 2$	Counts	RMSZ	$\# Z  > 2$
1	TPO	A	197	1	8,10,11	1.12	0	10,14,16	1.98	1 (10%)
1	SEP	A	139	1	8,9,10	1.21	2 (25%)	7,12,14	1.67	1 (14%)
1	SEP	A	338	1	8,9,10	1.06	0	7,12,14	1.89	1 (14%)

In the following table, the Chirals column lists the number of chiral outliers, the number of chiral centers analysed, the number of these observed in the model and the number defined in the Chemical Component Dictionary. Similar counts are reported in the Torsion and Rings columns. '-' means no outliers of that kind were identified.

Mol	Type	Chain	Res	Link	Chirals	Torsions	Rings
1	TPO	A	197	1	-	0/9/11/13	-
1	SEP	A	139	1	-	1/6/8/10	-
1	SEP	A	338	1	-	5/6/8/10	-

All (2) bond length outliers are listed below:

Mol	Chain	Res	Type	Atoms	Z	Observed(Å)	Ideal(Å)
1	A	139	SEP	P-O2P	2.18	1.62	1.54
1	A	139	SEP	P-O3P	2.02	1.62	1.54

All (3) bond angle outliers are listed below:

Mol	Chain	Res	Type	Atoms	Z	Observed(°)	Ideal(°)
1	A	197	TPO	P-OG1-CB	-5.91	107.26	123.33
1	A	338	SEP	OG-CB-CA	4.46	112.48	108.14
1	A	139	SEP	OG-CB-CA	3.78	111.82	108.14

There are no chirality outliers.

All (6) torsion outliers are listed below:

Mol	Chain	Res	Type	Atoms
1	A	338	SEP	C-CA-CB-OG
1	A	338	SEP	CA-CB-OG-P
1	A	338	SEP	CB-OG-P-O2P
1	A	338	SEP	CB-OG-P-O3P
1	A	338	SEP	N-CA-CB-OG
1	A	139	SEP	C-CA-CB-OG

There are no ring outliers.

1 monomer is involved in 1 short contact:

Mol	Chain	Res	Type	Clashes	Symm-Clashes
1	A	338	SEP	1	0

## 5.5 Carbohydrates [i](#)

There are no oligosaccharides in this entry.

## 5.6 Ligand geometry [i](#)

Of 4 ligands modelled in this entry, 2 are monoatomic - leaving 2 for Mogul analysis.

In the following table, the Counts columns list the number of bonds (or angles) for which Mogul statistics could be retrieved, the number of bonds (or angles) that are observed in the model and the number of bonds (or angles) that are defined in the Chemical Component Dictionary. The Link column lists molecule types, if any, to which the group is linked. The Z score for a bond length (or angle) is the number of standard deviations the observed value is removed from the

expected value. A bond length (or angle) with  $|Z| > 2$  is considered an outlier worth inspection. RMSZ is the root-mean-square of all Z scores of the bond lengths (or angles).

Mol	Type	Chain	Res	Link	Bond lengths			Bond angles		
					Counts	RMSZ	$\# Z  > 2$	Counts	RMSZ	$\# Z  > 2$
4	ADP	A	403	3	24,29,29	1.37	4 (16%)	29,45,45	1.33	3 (10%)
5	PO4	A	404	3	4,4,4	4.24	3 (75%)	6,6,6	0.95	0

In the following table, the Chirals column lists the number of chiral outliers, the number of chiral centers analysed, the number of these observed in the model and the number defined in the Chemical Component Dictionary. Similar counts are reported in the Torsion and Rings columns. '-' means no outliers of that kind were identified.

Mol	Type	Chain	Res	Link	Chirals	Torsions	Rings
4	ADP	A	403	3	-	0/12/32/32	0/3/3/3

All (7) bond length outliers are listed below:

Mol	Chain	Res	Type	Atoms	Z	Observed(Å)	Ideal(Å)
5	A	404	PO4	P-O1	7.45	1.67	1.50
5	A	404	PO4	P-O2	3.36	1.64	1.54
4	A	403	ADP	PA-O3A	3.09	1.62	1.59
4	A	403	ADP	C4-N3	2.46	1.39	1.35
4	A	403	ADP	C2-N1	2.45	1.38	1.33
4	A	403	ADP	C2-N3	2.37	1.35	1.32
5	A	404	PO4	P-O4	2.11	1.60	1.54

All (3) bond angle outliers are listed below:

Mol	Chain	Res	Type	Atoms	Z	Observed(°)	Ideal(°)
4	A	403	ADP	C1'-N9-C4	3.66	133.08	126.64
4	A	403	ADP	C5-C6-N6	2.37	123.93	120.31
4	A	403	ADP	O2B-PB-O3A	2.17	111.90	104.64

There are no chirality outliers.

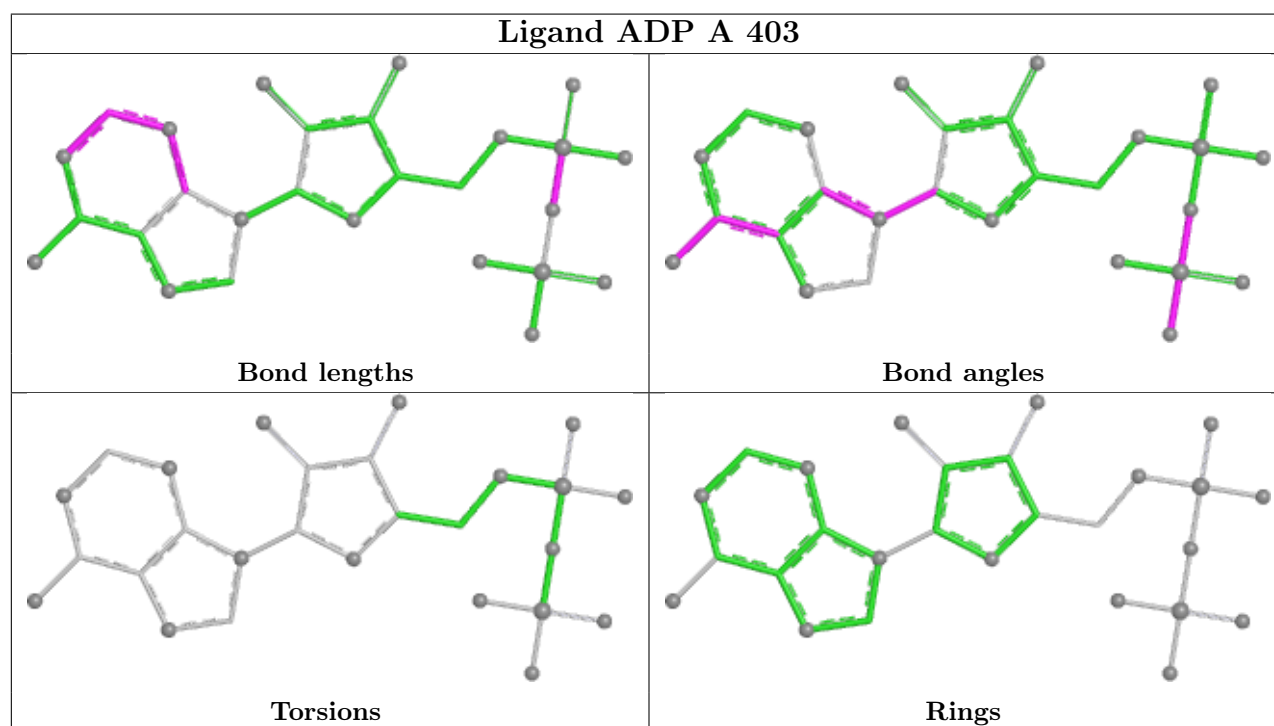
There are no torsion outliers.

There are no ring outliers.

2 monomers are involved in 3 short contacts:

Mol	Chain	Res	Type	Clashes	Symm-Clashes
4	A	403	ADP	2	0
5	A	404	PO4	1	0

The following is a two-dimensional graphical depiction of Mogul quality analysis of bond lengths, bond angles, torsion angles, and ring geometry for all instances of the Ligand of Interest. In addition, ligands with molecular weight > 250 and outliers as shown on the validation Tables will also be included. For torsion angles, if less than 5% of the Mogul distribution of torsion angles is within 10 degrees of the torsion angle in question, then that torsion angle is considered an outlier. Any bond that is central to one or more torsion angles identified as an outlier by Mogul will be highlighted in the graph. For rings, the root-mean-square deviation (RMSD) between the ring in question and similar rings identified by Mogul is calculated over all ring torsion angles. If the average RMSD is greater than 60 degrees and the minimal RMSD between the ring in question and any Mogul-identified rings is also greater than 60 degrees, then that ring is considered an outlier. The outliers are highlighted in purple. The color gray indicates Mogul did not find sufficient equivalents in the CSD to analyse the geometry.



## 5.7 Other polymers [i](#)

There are no such residues in this entry.

## 5.8 Polymer linkage issues [i](#)

There are no chain breaks in this entry.

## 6 Fit of model and data [i](#)

### 6.1 Protein, DNA and RNA chains [i](#)

In the following table, the column labelled ‘#RSRZ > 2’ contains the number (and percentage) of RSRZ outliers, followed by percent RSRZ outliers for the chain as percentile scores relative to all X-ray entries and entries of similar resolution. The OWAB column contains the minimum, median, 95<sup>th</sup> percentile and maximum values of the occupancy-weighted average B-factor per residue. The column labelled ‘Q < 0.9’ lists the number of (and percentage) of residues with an average occupancy less than 0.9.

Mol	Chain	Analysed	<RSRZ>	#RSRZ>2	OWAB(Å <sup>2</sup> )	Q<0.9
1	A	333/350 (95%)	-0.15	11 (3%) 49 46	19, 33, 61, 101	0
2	I	20/20 (100%)	-0.20	1 (5%) 35 32	25, 29, 77, 82	0
All	All	353/370 (95%)	-0.16	12 (3%) 48 45	19, 33, 62, 101	0

All (12) RSRZ outliers are listed below:

Mol	Chain	Res	Type	RSRZ
1	A	52	GLY	4.8
1	A	15	VAL	4.0
1	A	54	PHE	3.3
1	A	18	PHE	3.1
1	A	311	GLU	2.9
1	A	16	LYS	2.7
2	I	24	ASP	2.6
1	A	51	THR	2.5
1	A	318	PHE	2.4
1	A	242	GLN	2.3
1	A	55	GLY	2.2
1	A	53	SER	2.2

### 6.2 Non-standard residues in protein, DNA, RNA chains [i](#)

In the following table, the Atoms column lists the number of modelled atoms in the group and the number defined in the chemical component dictionary. The B-factors column lists the minimum, median, 95<sup>th</sup> percentile and maximum values of B factors of atoms in the group. The column labelled ‘Q < 0.9’ lists the number of atoms with occupancy less than 0.9.

Mol	Type	Chain	Res	Atoms	RSCC	RSR	B-factors(Å <sup>2</sup> )	Q<0.9
1	SEP	A	139	10/11	0.85	0.15	29,38,57,59	0
1	SEP	A	338	10/11	0.96	0.07	40,41,43,43	0

*Continued on next page...*

*Continued from previous page...*

Mol	Type	Chain	Res	Atoms	RSCC	RSR	B-factors( $\text{\AA}^2$ )	Q<0.9
1	TPO	A	197	11/12	0.97	0.07	22,26,28,28	0

## 6.3 Carbohydrates [i](#)

There are no monosaccharides in this entry.

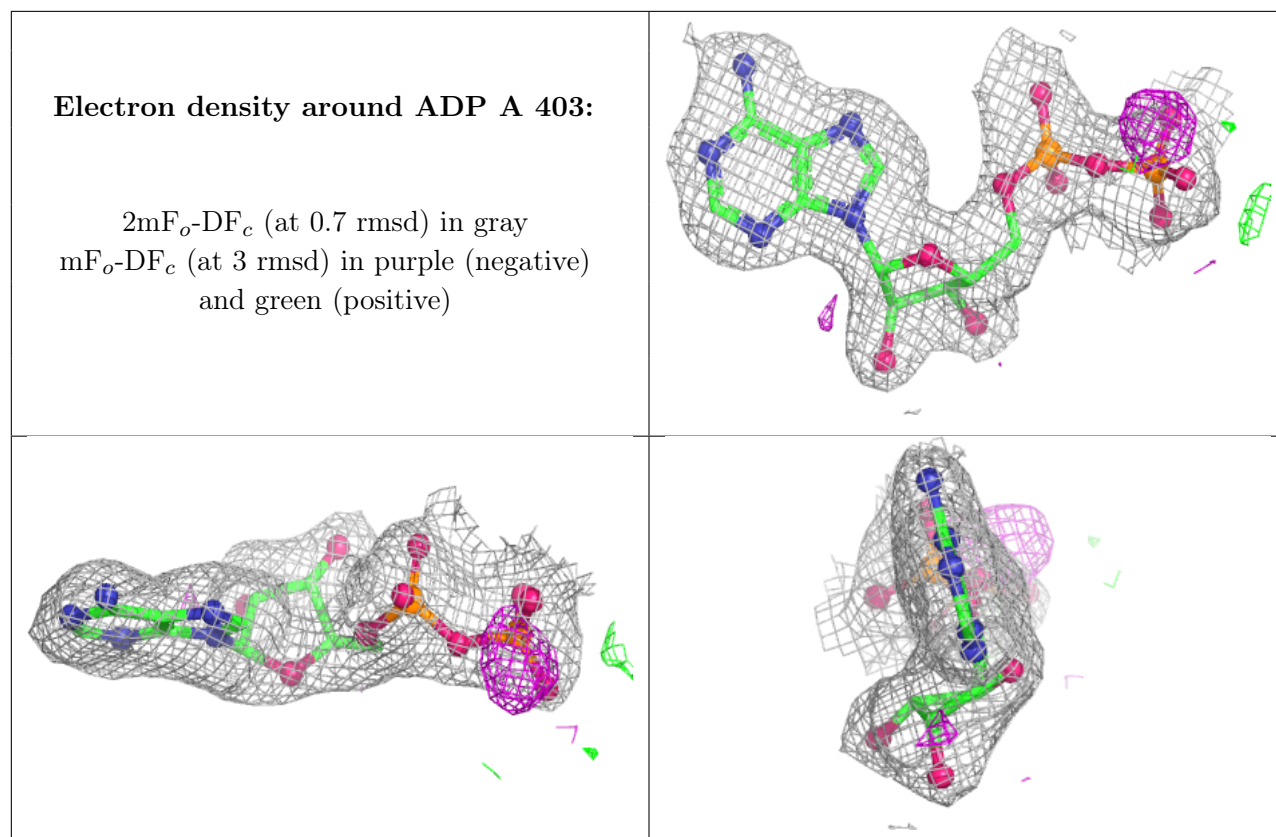
## 6.4 Ligands [i](#)

In the following table, the Atoms column lists the number of modelled atoms in the group and the number defined in the chemical component dictionary. The B-factors column lists the minimum, median, 95<sup>th</sup> percentile and maximum values of B factors of atoms in the group. The column labelled 'Q< 0.9' lists the number of atoms with occupancy less than 0.9.

Mol	Type	Chain	Res	Atoms	RSCC	RSR	B-factors( $\text{\AA}^2$ )	Q<0.9
3	MG	A	401	1/1	0.89	0.08	39,39,39,39	0
3	MG	A	402	1/1	0.91	0.07	30,30,30,30	0
4	ADP	A	403	27/27	0.95	0.07	26,33,42,44	0
5	PO4	A	404	5/5	0.95	0.08	57,57,58,58	0

The following is a graphical depiction of the model fit to experimental electron density of all instances of the Ligand of Interest. In addition, ligands with molecular weight > 250 and outliers as shown on the geometry validation Tables will also be included. Each fit is shown from different orientation to approximate a three-dimensional view.





## 6.5 Other polymers [i](#)

There are no such residues in this entry.