



wwPDB X-ray Structure Validation Summary Report ⓘ

Oct 13, 2025 – 10:07 AM EDT

PDB ID : 9DS0 / pdb_00009ds0
Title : Crystal structure of sphA with MeVGQ
Authors : Xi, W.; Hai, Y.
Deposited on : 2024-09-26
Resolution : 2.14 Å(reported)

This is a wwPDB X-ray Structure Validation Summary Report for a publicly released PDB entry.

We welcome your comments at validation@mail.wwpdb.org

A user guide is available at

<https://www.wwpdb.org/validation/2017/XrayValidationReportHelp>

with specific help available everywhere you see the ⓘ symbol.

The types of validation reports are described at

<http://www.wwpdb.org/validation/2017/FAQs#types>.

The following versions of software and data (see [references ⓘ](#)) were used in the production of this report:

MolProbity : 4-5-2 with Phenix2.0
Mogul : 2022.3.0, CSD as543be (2022)
Xtriage (Phenix) : 2.0
EDS : 3.0
buster-report : 1.1.7 (2018)
Percentile statistics : 20231227.v01 (using entries in the PDB archive December 27th 2023)
CCP4 : 9.0.010 (Gargrove)
Density-Fitness : 1.0.12
Ideal geometry (proteins) : Engh & Huber (2001)
Ideal geometry (DNA, RNA) : Parkinson et al. (1996)
Validation Pipeline (wwPDB-VP) : 2.46

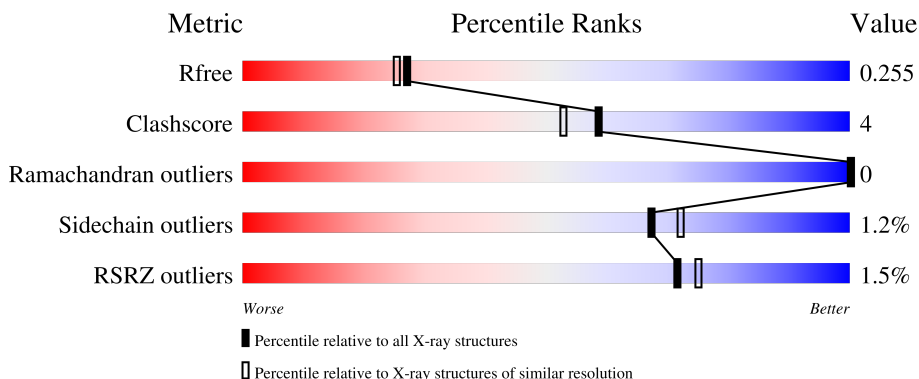
1 Overall quality at a glance

The following experimental techniques were used to determine the structure:

X-RAY DIFFRACTION

The reported resolution of this entry is 2.14 Å.

Percentile scores (ranging between 0-100) for global validation metrics of the entry are shown in the following graphic. The table shows the number of entries on which the scores are based.



Metric	Whole archive (#Entries)	Similar resolution (#Entries, resolution range(Å))
R_{free}	164625	3336 (2.16-2.12)
Clashscore	180529	3585 (2.16-2.12)
Ramachandran outliers	177936	3554 (2.16-2.12)
Sidechain outliers	177891	3553 (2.16-2.12)
RSRZ outliers	164620	3337 (2.16-2.12)

The table below summarises the geometric issues observed across the polymeric chains and their fit to the electron density. The red, orange, yellow and green segments of the lower bar indicate the fraction of residues that contain outliers for ≥ 3 , 2, 1 and 0 types of geometric quality criteria respectively. A grey segment represents the fraction of residues that are not modelled. The numeric value for each fraction is indicated below the corresponding segment, with a dot representing fractions $\leq 5\%$. The upper red bar (where present) indicates the fraction of residues that have poor fit to the electron density. The numeric value is given above the bar.

Mol	Chain	Length	Quality of chain
1	A	487	
1	B	487	
1	C	487	
1	D	487	

2 Entry composition

There are 10 unique types of molecules in this entry. The entry contains 14689 atoms, of which 0 are hydrogens and 0 are deuteriums.

In the tables below, the ZeroOcc column contains the number of atoms modelled with zero occupancy, the AltConf column contains the number of residues with at least one atom in alternate conformation and the Trace column contains the number of residues modelled with at most 2 atoms.

- Molecule 1 is a protein called 8-amino-7-oxononanoate synthase.

Mol	Chain	Residues	Atoms					ZeroOcc	AltConf	Trace
1	A	463	Total	C	N	O	S	0	1	0
			3573	2262	610	679	22			
1	B	463	Total	C	N	O	S	0	2	0
			3582	2269	612	678	23			
1	C	458	Total	C	N	O	S	0	1	0
			3533	2234	603	674	22			
1	D	462	Total	C	N	O	S	0	1	0
			3569	2260	610	677	22			

There are 72 discrepancies between the modelled and reference sequences:

Chain	Residue	Modelled	Actual	Comment	Reference
A	-16	MET	-	initiating methionine	UNP Q4WYY5
A	-15	GLY	-	expression tag	UNP Q4WYY5
A	-14	SER	-	expression tag	UNP Q4WYY5
A	-13	SER	-	expression tag	UNP Q4WYY5
A	-12	HIS	-	expression tag	UNP Q4WYY5
A	-11	HIS	-	expression tag	UNP Q4WYY5
A	-10	HIS	-	expression tag	UNP Q4WYY5
A	-9	HIS	-	expression tag	UNP Q4WYY5
A	-8	HIS	-	expression tag	UNP Q4WYY5
A	-7	HIS	-	expression tag	UNP Q4WYY5
A	-6	GLU	-	expression tag	UNP Q4WYY5
A	-5	ASN	-	expression tag	UNP Q4WYY5
A	-4	LEU	-	expression tag	UNP Q4WYY5
A	-3	TYR	-	expression tag	UNP Q4WYY5
A	-2	PHE	-	expression tag	UNP Q4WYY5
A	-1	GLN	-	expression tag	UNP Q4WYY5
A	0	SER	-	expression tag	UNP Q4WYY5
A	1	ASN	-	expression tag	UNP Q4WYY5
B	-16	MET	-	initiating methionine	UNP Q4WYY5
B	-15	GLY	-	expression tag	UNP Q4WYY5
B	-14	SER	-	expression tag	UNP Q4WYY5

Continued on next page...

Continued from previous page...

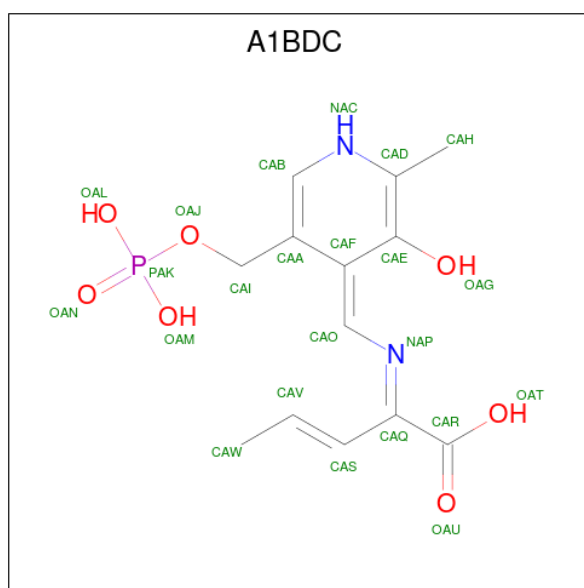
Chain	Residue	Modelled	Actual	Comment	Reference
B	-13	SER	-	expression tag	UNP Q4WYY5
B	-12	HIS	-	expression tag	UNP Q4WYY5
B	-11	HIS	-	expression tag	UNP Q4WYY5
B	-10	HIS	-	expression tag	UNP Q4WYY5
B	-9	HIS	-	expression tag	UNP Q4WYY5
B	-8	HIS	-	expression tag	UNP Q4WYY5
B	-7	HIS	-	expression tag	UNP Q4WYY5
B	-6	GLU	-	expression tag	UNP Q4WYY5
B	-5	ASN	-	expression tag	UNP Q4WYY5
B	-4	LEU	-	expression tag	UNP Q4WYY5
B	-3	TYR	-	expression tag	UNP Q4WYY5
B	-2	PHE	-	expression tag	UNP Q4WYY5
B	-1	GLN	-	expression tag	UNP Q4WYY5
B	0	SER	-	expression tag	UNP Q4WYY5
B	1	ASN	-	expression tag	UNP Q4WYY5
C	-16	MET	-	initiating methionine	UNP Q4WYY5
C	-15	GLY	-	expression tag	UNP Q4WYY5
C	-14	SER	-	expression tag	UNP Q4WYY5
C	-13	SER	-	expression tag	UNP Q4WYY5
C	-12	HIS	-	expression tag	UNP Q4WYY5
C	-11	HIS	-	expression tag	UNP Q4WYY5
C	-10	HIS	-	expression tag	UNP Q4WYY5
C	-9	HIS	-	expression tag	UNP Q4WYY5
C	-8	HIS	-	expression tag	UNP Q4WYY5
C	-7	HIS	-	expression tag	UNP Q4WYY5
C	-6	GLU	-	expression tag	UNP Q4WYY5
C	-5	ASN	-	expression tag	UNP Q4WYY5
C	-4	LEU	-	expression tag	UNP Q4WYY5
C	-3	TYR	-	expression tag	UNP Q4WYY5
C	-2	PHE	-	expression tag	UNP Q4WYY5
C	-1	GLN	-	expression tag	UNP Q4WYY5
C	0	SER	-	expression tag	UNP Q4WYY5
C	1	ASN	-	expression tag	UNP Q4WYY5
D	-16	MET	-	initiating methionine	UNP Q4WYY5
D	-15	GLY	-	expression tag	UNP Q4WYY5
D	-14	SER	-	expression tag	UNP Q4WYY5
D	-13	SER	-	expression tag	UNP Q4WYY5
D	-12	HIS	-	expression tag	UNP Q4WYY5
D	-11	HIS	-	expression tag	UNP Q4WYY5
D	-10	HIS	-	expression tag	UNP Q4WYY5
D	-9	HIS	-	expression tag	UNP Q4WYY5
D	-8	HIS	-	expression tag	UNP Q4WYY5

Continued on next page...

Continued from previous page...

Chain	Residue	Modelled	Actual	Comment	Reference
D	-7	HIS	-	expression tag	UNP Q4WYY5
D	-6	GLU	-	expression tag	UNP Q4WYY5
D	-5	ASN	-	expression tag	UNP Q4WYY5
D	-4	LEU	-	expression tag	UNP Q4WYY5
D	-3	TYR	-	expression tag	UNP Q4WYY5
D	-2	PHE	-	expression tag	UNP Q4WYY5
D	-1	GLN	-	expression tag	UNP Q4WYY5
D	0	SER	-	expression tag	UNP Q4WYY5
D	1	ASN	-	expression tag	UNP Q4WYY5

- Molecule 2 is (2E,3E)-2-{[(Z)-{3-hydroxy-2-methyl-5-[(phosphonooxy)methyl]pyridin-4(1H)-ylidene)methyl]imino}pent-3-enoic acid (CCD ID: A1BDC) (formula: C₁₃H₁₇N₂O₇P).



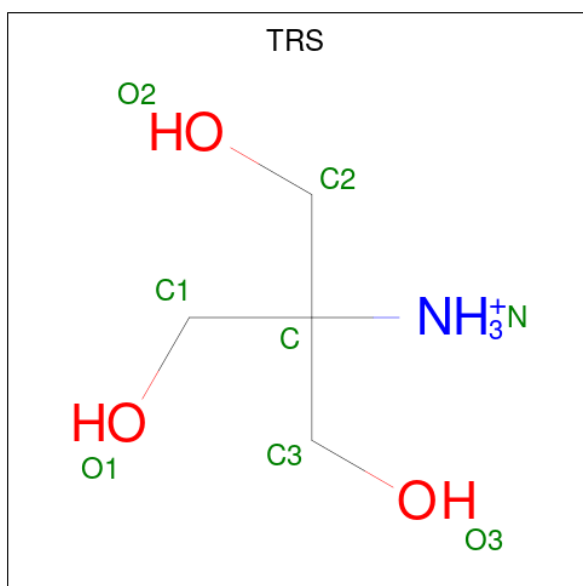
Mol	Chain	Residues	Atoms					ZeroOcc	AltConf
2	A	1	Total	C	N	O	P	0	0
			23	13	2	7	1		
2	B	1	Total	C	N	O	P	0	0
			23	13	2	7	1		
2	C	1	Total	C	N	O	P	0	0
			23	13	2	7	1		
2	D	1	Total	C	N	O	P	0	0
			23	13	2	7	1		

- Molecule 3 is ACETIC ACID (CCD ID: ACY) (formula: C₂H₄O₂).



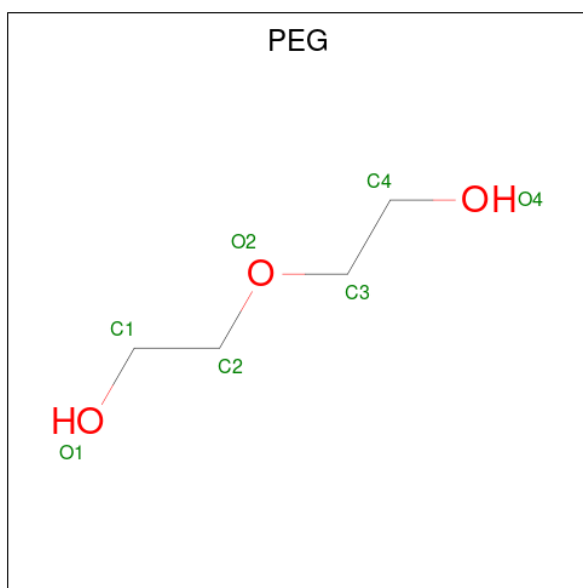
Mol	Chain	Residues	Atoms			ZeroOcc	AltConf
3	A	1	Total	C	O	0	0
			4	2	2		

- Molecule 4 is 2-AMINO-2-HYDROXYMETHYL-PROPANE-1,3-DIOL (CCD ID: TRS) (formula: $C_4H_{12}NO_3$).



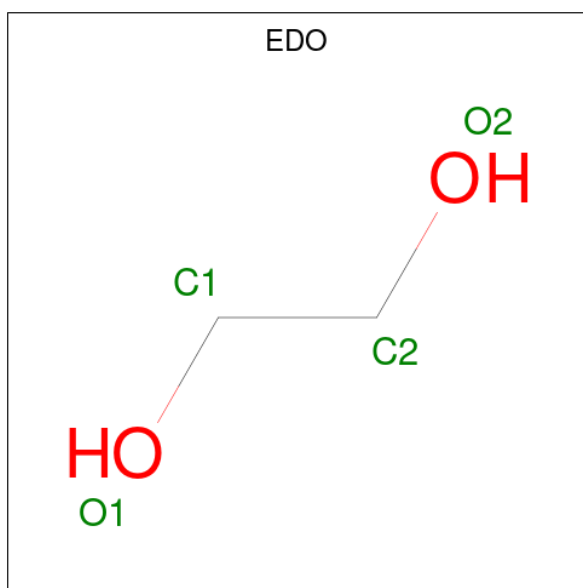
Mol	Chain	Residues	Atoms				ZeroOcc	AltConf
4	B	1	Total	C	N	O	0	0
			8	4	1	3		
4	C	1	Total	C	N	O	0	0
			8	4	1	3		

- Molecule 5 is DI(HYDROXYETHYL)ETHER (CCD ID: PEG) (formula: $C_4H_{10}O_3$).



Mol	Chain	Residues	Atoms			ZeroOcc	AltConf
5	B	1	Total	C	O	0	0
			7	4	3		

- Molecule 6 is 1,2-ETHANEDIOL (CCD ID: EDO) (formula: $C_2H_6O_2$).



Mol	Chain	Residues	Atoms			ZeroOcc	AltConf
6	B	1	Total	C	O	0	0
			4	2	2		
6	C	1	Total	C	O	0	0
			4	2	2		

Continued on next page...

Continued from previous page...

Mol	Chain	Residues	Atoms			ZeroOcc	AltConf
6	C	1	Total	C	O	0	0
			4	2	2		

- Molecule 7 is SODIUM ION (CCD ID: NA) (formula: Na).

Mol	Chain	Residues	Atoms		ZeroOcc	AltConf
7	F	1	Total	Na	0	0
			1	1		

- Molecule 8 is CHLORIDE ION (CCD ID: CL) (formula: Cl).

Mol	Chain	Residues	Atoms		ZeroOcc	AltConf
8	G	1	Total	Cl	0	0
			1	1		

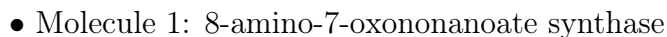
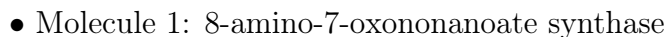
- Molecule 9 is POTASSIUM ION (CCD ID: K) (formula: K).

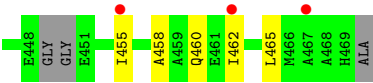
Mol	Chain	Residues	Atoms		ZeroOcc	AltConf
9	E	3	Total	K	0	0
			3	3		

- Molecule 10 is water.

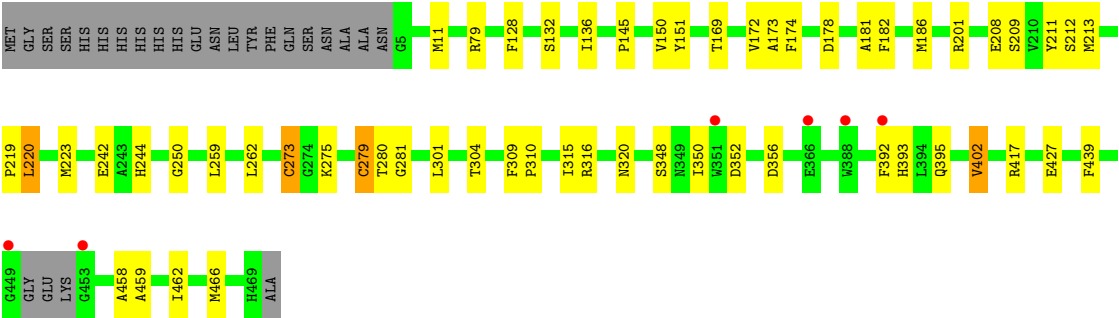
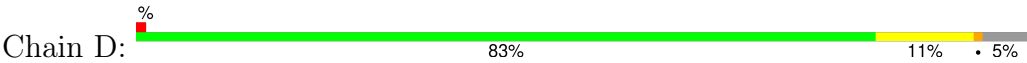
Mol	Chain	Residues	Atoms		ZeroOcc	AltConf
10	S	296	Total	O	0	0
			296	296		

- Molecule 1: 8-amino-7-oxononanoate synthase





• Molecule 1: 8-amino-7-oxononanoate synthase



4 Data and refinement statistics

Property	Value	Source
Space group	P 1	Depositor
Cell constants a, b, c, α , β , γ	72.35Å 88.75Å 91.60Å 64.22° 86.93° 90.01°	Depositor
Resolution (Å)	45.55 – 2.14 45.55 – 2.14	Depositor EDS
% Data completeness (in resolution range)	87.8 (45.55-2.14) 88.3 (45.55-2.14)	Depositor EDS
R_{merge}	(Not available)	Depositor
R_{sym}	(Not available)	Depositor
$\langle I/\sigma(I) \rangle$ ¹	1.96 (at 2.14Å)	Xtriage
Refinement program	PHENIX 1.21.1_5286	Depositor
R, R_{free}	0.204 , 0.256 0.204 , 0.255	Depositor DCC
R_{free} test set	5026 reflections (4.42%)	wwPDB-VP
Wilson B-factor (Å ²)	30.2	Xtriage
Anisotropy	0.569	Xtriage
Bulk solvent k_{sol} (e/Å ³), B_{sol} (Å ²)	0.38 , 43.5	EDS
L-test for twinning ²	$\langle L \rangle = 0.50$, $\langle L^2 \rangle = 0.34$	Xtriage
Estimated twinning fraction	0.004 for -h,l,k	Xtriage
F_o, F_c correlation	0.94	EDS
Total number of atoms	14689	wwPDB-VP
Average B, all atoms (Å ²)	38.0	wwPDB-VP

Xtriage's analysis on translational NCS is as follows: *The largest off-origin peak in the Patterson function is 4.91% of the height of the origin peak. No significant pseudotranslation is detected.*

¹Intensities estimated from amplitudes.

²Theoretical values of $\langle |L| \rangle$, $\langle L^2 \rangle$ for acentric reflections are 0.5, 0.333 respectively for untwinned datasets, and 0.375, 0.2 for perfectly twinned datasets.

5 Model quality [i](#)

5.1 Standard geometry [i](#)

Bond lengths and bond angles in the following residue types are not validated in this section: CL, A1BDC, NA, EDO, TRS, ACY, K, PEG

The Z score for a bond length (or angle) is the number of standard deviations the observed value is removed from the expected value. A bond length (or angle) with $|Z| > 5$ is considered an outlier worth inspection. RMSZ is the root-mean-square of all Z scores of the bond lengths (or angles).

Mol	Chain	Bond lengths		Bond angles	
		RMSZ	$\# Z > 5$	RMSZ	$\# Z > 5$
1	A	0.37	1/3647 (0.0%)	0.54	1/4947 (0.0%)
1	B	0.36	0/3660	0.52	0/4964
1	C	0.35	0/3601	0.53	0/4878
1	D	0.31	0/3643	0.52	2/4943 (0.0%)
All	All	0.35	1/14551 (0.0%)	0.53	3/19732 (0.0%)

All (1) bond length outliers are listed below:

Mol	Chain	Res	Type	Atoms	Z	Observed(Å)	Ideal(Å)
1	A	275	LYS	CA-C	-5.20	1.50	1.52

All (3) bond angle outliers are listed below:

Mol	Chain	Res	Type	Atoms	Z	Observed(°)	Ideal(°)
1	D	273	CYS	N-CA-CB	-8.21	98.56	110.80
1	D	273	CYS	CB-CA-C	6.97	122.12	109.99
1	A	396	LEU	N-CA-C	-5.24	105.74	111.82

There are no chirality outliers.

There are no planarity outliers.

5.2 Too-close contacts [i](#)

In the following table, the Non-H and H(model) columns list the number of non-hydrogen atoms and hydrogen atoms in the chain respectively. The H(added) column lists the number of hydrogen atoms added and optimized by MolProbity. The Clashes column lists the number of clashes within the asymmetric unit, whereas Symm-Clashes lists symmetry-related clashes.

Mol	Chain	Non-H	H(model)	H(added)	Clashes	Symm-Clashes
1	A	3573	0	3541	36	0
1	B	3582	0	3552	26	0
1	C	3533	0	3502	32	0
1	D	3569	0	3537	35	0
2	A	23	0	0	0	0
2	B	23	0	0	0	0
2	C	23	0	0	2	0
2	D	23	0	0	0	0
3	A	4	0	3	0	0
4	B	8	0	12	0	0
4	C	8	0	12	0	0
5	B	7	0	10	1	0
6	B	4	0	6	1	0
6	C	8	0	12	3	0
7	F	1	0	0	0	0
8	G	1	0	0	0	0
9	E	3	0	0	0	0
10	S	296	0	0	0	0
All	All	14689	0	14187	124	0

The all-atom clashscore is defined as the number of clashes found per 1000 atoms (including hydrogen atoms). The all-atom clashscore for this structure is 4.

The worst 5 of 124 close contacts within the same asymmetric unit are listed below, sorted by their clash magnitude.

Atom-1	Atom-2	Interatomic distance (Å)	Clash overlap (Å)
1:B:402:VAL:HG13	1:B:417:ARG:HB3	1.77	0.66
1:D:220:LEU:HD12	1:D:262:LEU:HD13	1.77	0.66
1:C:46:GLN:HB2	1:C:388:TRP:HH2	1.63	0.64
1:A:150:VAL:HG11	1:A:186:MET:SD	2.39	0.62
1:B:21:ILE:O	1:B:24:ARG:HG2	1.99	0.61

There are no symmetry-related clashes.

5.3 Torsion angles ⓘ

5.3.1 Protein backbone ⓘ

In the following table, the Percentiles column shows the percent Ramachandran outliers of the chain as a percentile score with respect to all X-ray entries followed by that with respect to entries of similar resolution.

The Analysed column shows the number of residues for which the backbone conformation was analysed, and the total number of residues.

Mol	Chain	Analysed	Favoured	Allowed	Outliers	Percentiles	
1	A	460/487 (94%)	453 (98%)	7 (2%)	0	100	100
1	B	461/487 (95%)	450 (98%)	11 (2%)	0	100	100
1	C	449/487 (92%)	440 (98%)	9 (2%)	0	100	100
1	D	459/487 (94%)	449 (98%)	10 (2%)	0	100	100
All	All	1829/1948 (94%)	1792 (98%)	37 (2%)	0	100	100

There are no Ramachandran outliers to report.

5.3.2 Protein sidechains ⓘ

In the following table, the Percentiles column shows the percent sidechain outliers of the chain as a percentile score with respect to all X-ray entries followed by that with respect to entries of similar resolution.

The Analysed column shows the number of residues for which the sidechain conformation was analysed, and the total number of residues.

Mol	Chain	Analysed	Rotameric	Outliers	Percentiles	
1	A	383/402 (95%)	379 (99%)	4 (1%)	73	77
1	B	384/402 (96%)	376 (98%)	8 (2%)	48	51
1	C	380/402 (94%)	378 (100%)	2 (0%)	86	90
1	D	383/402 (95%)	378 (99%)	5 (1%)	65	70
All	All	1530/1608 (95%)	1511 (99%)	19 (1%)	67	72

5 of 19 residues with a non-rotameric sidechain are listed below:

Mol	Chain	Res	Type
1	D	169	THR
1	D	279	CYS
1	D	402	VAL
1	D	275	LYS
1	B	395	GLN

Sometimes sidechains can be flipped to improve hydrogen bonding and reduce clashes. 5 of 12 such sidechains are listed below:

Mol	Chain	Res	Type
1	C	133	ASN
1	D	133	ASN
1	D	328	GLN
1	D	160	HIS
1	B	393	HIS

5.3.3 RNA ⓘ

There are no RNA molecules in this entry.

5.4 Non-standard residues in protein, DNA, RNA chains ⓘ

There are no non-standard protein/DNA/RNA residues in this entry.

5.5 Carbohydrates ⓘ

There are no oligosaccharides in this entry.

5.6 Ligand geometry ⓘ

Of 16 ligands modelled in this entry, 5 are monoatomic - leaving 11 for Mogul analysis.

In the following table, the Counts columns list the number of bonds (or angles) for which Mogul statistics could be retrieved, the number of bonds (or angles) that are observed in the model and the number of bonds (or angles) that are defined in the Chemical Component Dictionary. The Link column lists molecule types, if any, to which the group is linked. The Z score for a bond length (or angle) is the number of standard deviations the observed value is removed from the expected value. A bond length (or angle) with $|Z| > 2$ is considered an outlier worth inspection. RMSZ is the root-mean-square of all Z scores of the bond lengths (or angles).

Mol	Type	Chain	Res	Link	Bond lengths			Bond angles		
					Counts	RMSZ	# Z > 2	Counts	RMSZ	# Z > 2
6	EDO	C	503	-	3,3,3	0.10	0	2,2,2	1.69	0
2	A1BDC	C	501	-	22,23,23	3.27	10 (45%)	27,32,32	2.66	15 (55%)
5	PEG	B	503	-	6,6,6	0.29	0	5,5,5	0.26	0
2	A1BDC	B	501	-	22,23,23	3.45	10 (45%)	27,32,32	2.81	13 (48%)
6	EDO	C	502	-	3,3,3	0.33	0	2,2,2	0.63	0
3	ACY	A	502	-	3,3,3	1.15	0	3,3,3	0.99	0
2	A1BDC	A	501	-	22,23,23	3.24	9 (40%)	27,32,32	2.47	10 (37%)
6	EDO	B	504	-	3,3,3	0.14	0	2,2,2	1.01	0
4	TRS	B	502	-	7,7,7	0.44	0	9,9,9	0.61	0

Mol	Type	Chain	Res	Link	Bond lengths			Bond angles		
					Counts	RMSZ	# Z > 2	Counts	RMSZ	# Z > 2
4	TRS	C	504	-	7,7,7	0.13	0	9,9,9	0.31	0
2	A1BDC	D	501	-	22,23,23	3.28	9 (40%)	27,32,32	2.54	14 (51%)

In the following table, the Chirals column lists the number of chiral outliers, the number of chiral centers analysed, the number of these observed in the model and the number defined in the Chemical Component Dictionary. Similar counts are reported in the Torsion and Rings columns. '-' means no outliers of that kind were identified.

Mol	Type	Chain	Res	Link	Chirals	Torsions	Rings
6	EDO	C	503	-	-	1/1/1/1	-
2	A1BDC	C	501	-	-	2/16/18/18	0/1/1/1
5	PEG	B	503	-	-	2/4/4/4	-
2	A1BDC	B	501	-	-	3/16/18/18	0/1/1/1
6	EDO	C	502	-	-	0/1/1/1	-
2	A1BDC	A	501	-	-	5/16/18/18	0/1/1/1
6	EDO	B	504	-	-	0/1/1/1	-
4	TRS	B	502	-	-	9/9/9/9	-
4	TRS	C	504	-	-	8/9/9/9	-
2	A1BDC	D	501	-	-	5/16/18/18	0/1/1/1

The worst 5 of 38 bond length outliers are listed below:

Mol	Chain	Res	Type	Atoms	Z	Observed(Å)	Ideal(Å)
2	B	501	A1BDC	CAQ-CAR	-10.50	1.37	1.48
2	D	501	A1BDC	CAQ-CAR	-9.74	1.38	1.48
2	C	501	A1BDC	CAQ-CAR	-9.72	1.38	1.48
2	A	501	A1BDC	CAQ-CAR	-8.84	1.39	1.48
2	A	501	A1BDC	CAD-NAC	-6.08	1.27	1.34

The worst 5 of 52 bond angle outliers are listed below:

Mol	Chain	Res	Type	Atoms	Z	Observed(°)	Ideal(°)
2	B	501	A1BDC	OAT-CAR-CAQ	6.50	123.83	113.40
2	A	501	A1BDC	OAT-CAR-CAQ	5.71	122.56	113.40
2	A	501	A1BDC	OAT-CAR-OAU	-5.65	110.44	123.90
2	C	501	A1BDC	OAT-CAR-OAU	-5.33	111.20	123.90
2	D	501	A1BDC	OAT-CAR-OAU	-5.05	111.88	123.90

There are no chirality outliers.

5 of 35 torsion outliers are listed below:

Mol	Chain	Res	Type	Atoms
2	A	501	A1BDC	CAI-OAJ-PAK-OAM
2	A	501	A1BDC	NAP-CAQ-CAS-CAV
2	A	501	A1BDC	CAR-CAQ-CAS-CAV
2	B	501	A1BDC	NAP-CAQ-CAS-CAV
2	B	501	A1BDC	CAR-CAQ-CAS-CAV

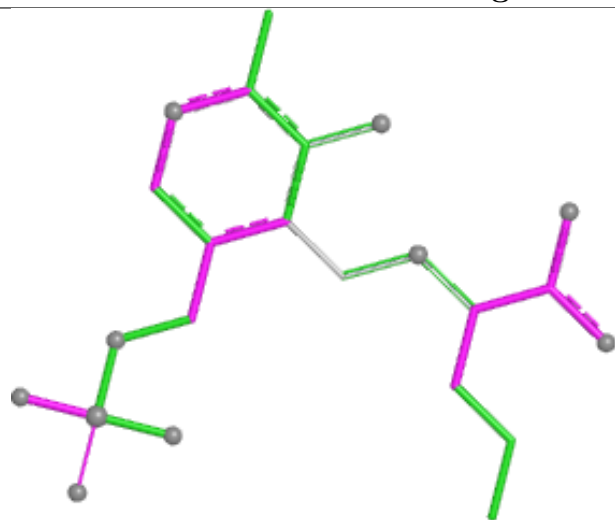
There are no ring outliers.

5 monomers are involved in 7 short contacts:

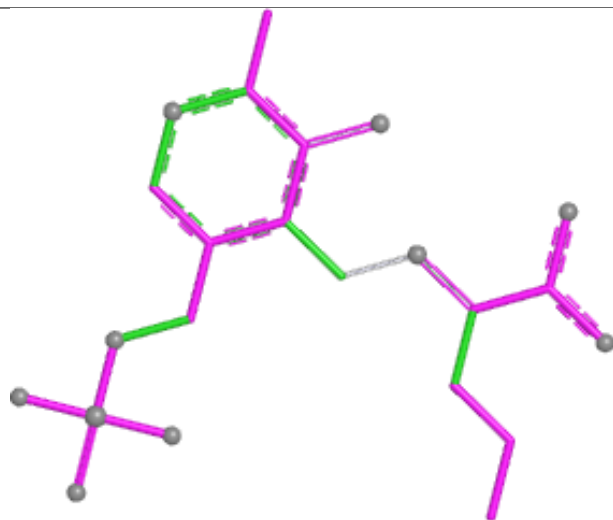
Mol	Chain	Res	Type	Clashes	Symm-Clashes
6	C	503	EDO	2	0
2	C	501	A1BDC	2	0
5	B	503	PEG	1	0
6	C	502	EDO	1	0
6	B	504	EDO	1	0

The following is a two-dimensional graphical depiction of Mogul quality analysis of bond lengths, bond angles, torsion angles, and ring geometry for all instances of the Ligand of Interest. In addition, ligands with molecular weight > 250 and outliers as shown on the validation Tables will also be included. For torsion angles, if less than 5% of the Mogul distribution of torsion angles is within 10 degrees of the torsion angle in question, then that torsion angle is considered an outlier. Any bond that is central to one or more torsion angles identified as an outlier by Mogul will be highlighted in the graph. For rings, the root-mean-square deviation (RMSD) between the ring in question and similar rings identified by Mogul is calculated over all ring torsion angles. If the average RMSD is greater than 60 degrees and the minimal RMSD between the ring in question and any Mogul-identified rings is also greater than 60 degrees, then that ring is considered an outlier. The outliers are highlighted in purple. The color gray indicates Mogul did not find sufficient equivalents in the CSD to analyse the geometry.

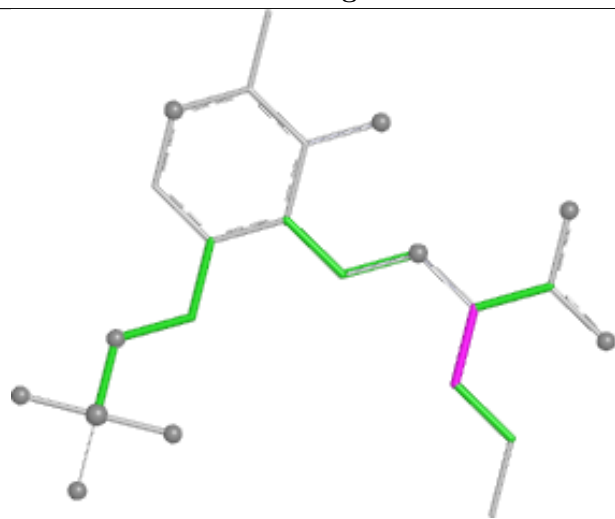
Ligand A1BDC C 501



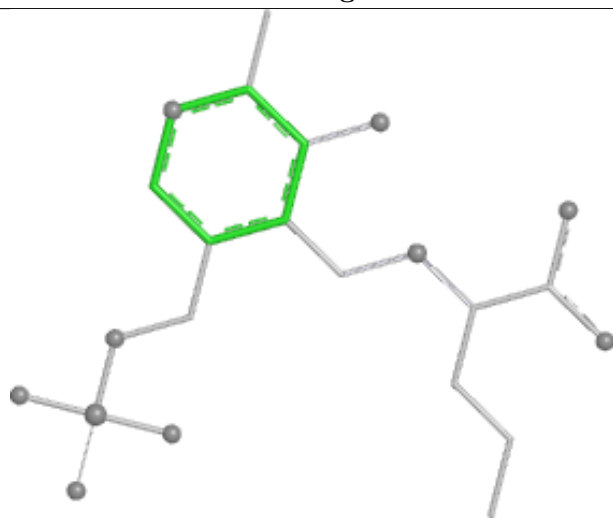
Bond lengths



Bond angles

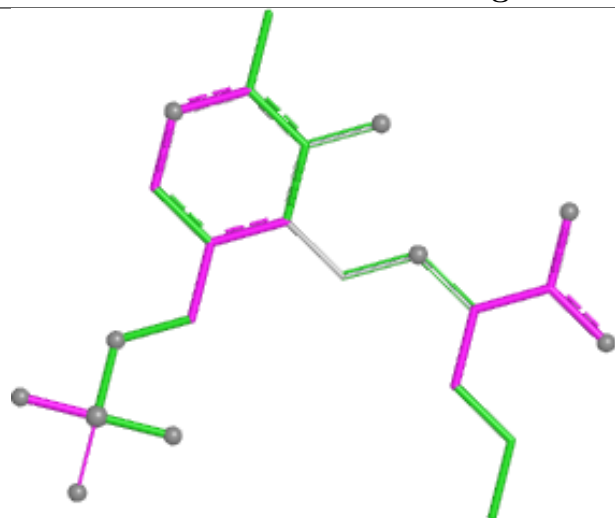


Torsions

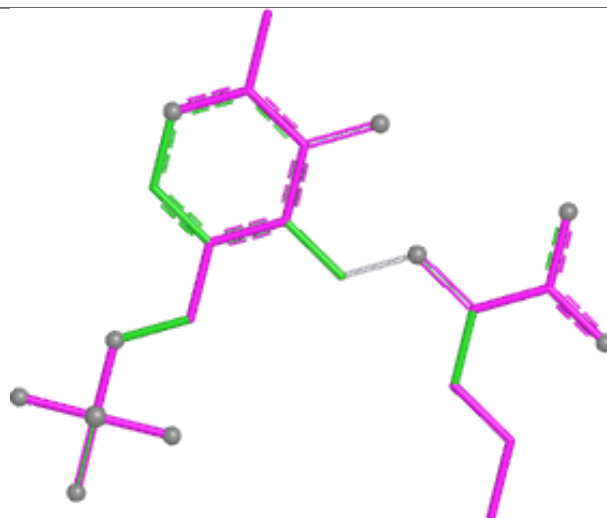


Rings

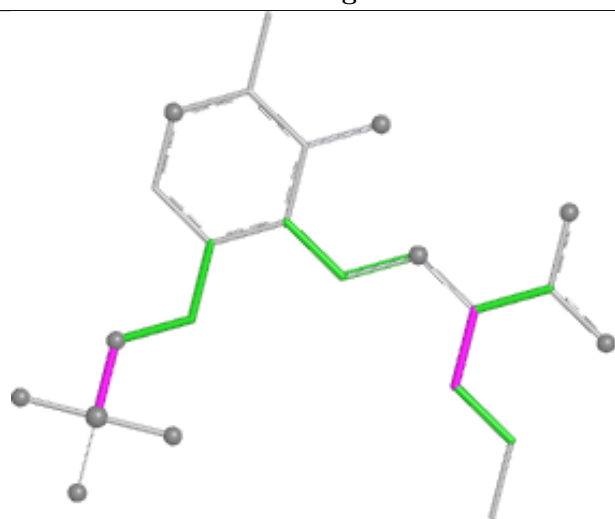
Ligand A1BDC B 501



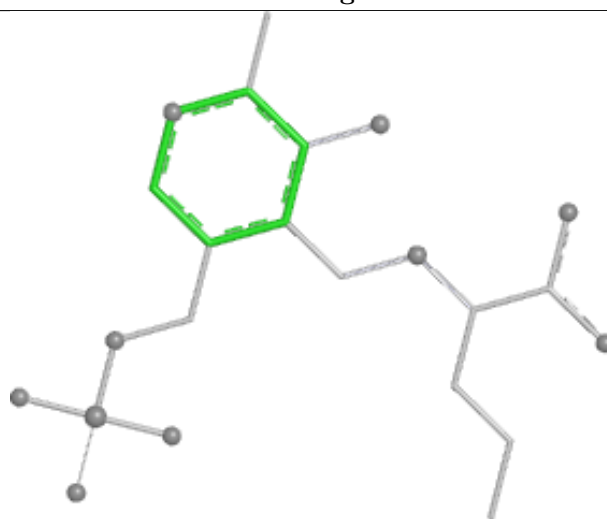
Bond lengths



Bond angles

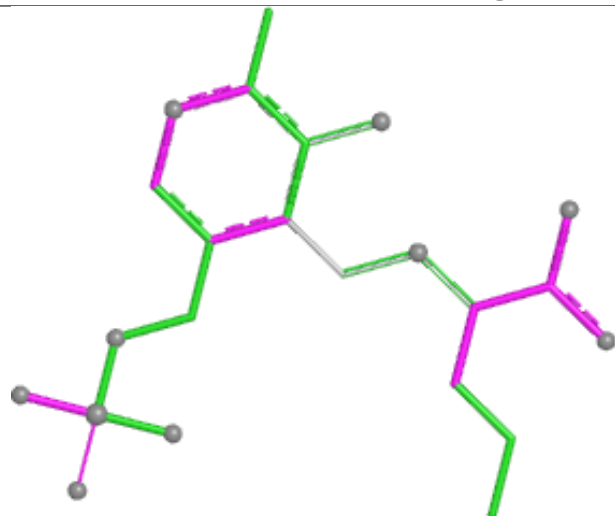


Torsions

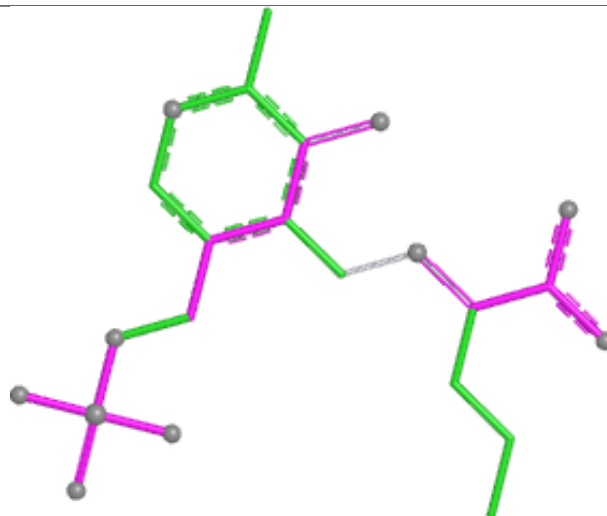


Rings

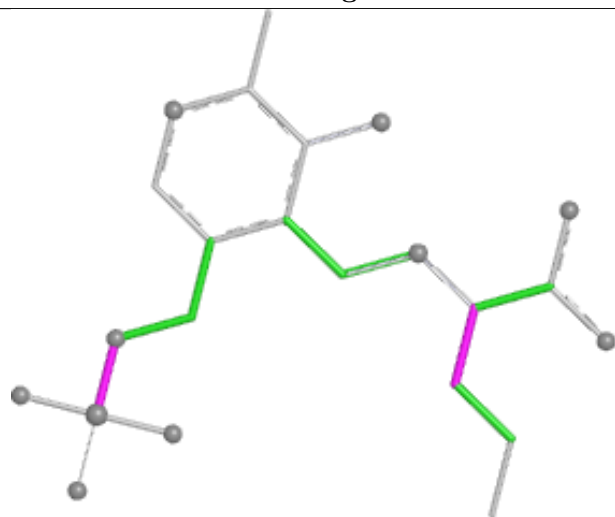
Ligand A1BDC A 501



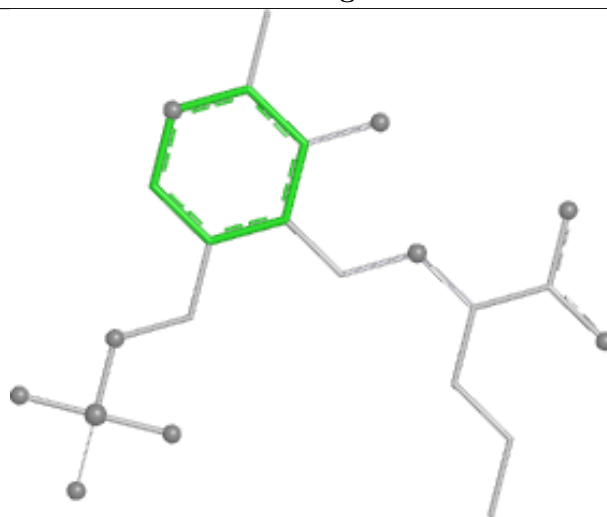
Bond lengths



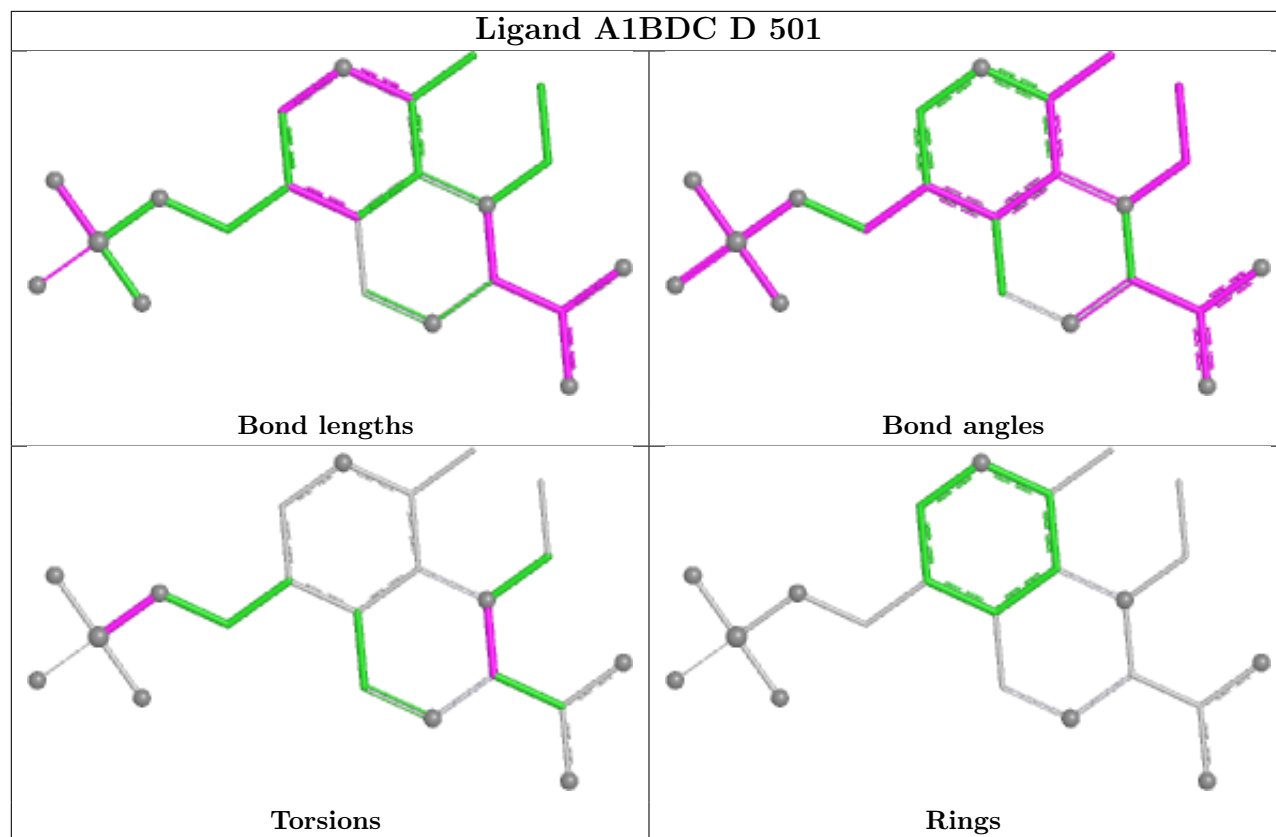
Bond angles



Torsions



Rings



5.7 Other polymers [i](#)

There are no such residues in this entry.

5.8 Polymer linkage issues [i](#)

There are no chain breaks in this entry.

6 Fit of model and data [i](#)

6.1 Protein, DNA and RNA chains [i](#)

In the following table, the column labelled ‘#RSRZ> 2’ contains the number (and percentage) of RSRZ outliers, followed by percent RSRZ outliers for the chain as percentile scores relative to all X-ray entries and entries of similar resolution. The OWAB column contains the minimum, median, 95th percentile and maximum values of the occupancy-weighted average B-factor per residue. The column labelled ‘Q< 0.9’ lists the number of (and percentage) of residues with an average occupancy less than 0.9.

Mol	Chain	Analysed	<RSRZ>	#RSRZ>2	OWAB(Å ²)	Q<0.9
1	A	463/487 (95%)	0.13	6 (1%) 74 78	21, 36, 55, 82	1 (0%)
1	B	463/487 (95%)	0.13	10 (2%) 62 66	20, 33, 61, 75	2 (0%)
1	C	458/487 (94%)	0.13	5 (1%) 77 81	15, 33, 61, 74	1 (0%)
1	D	462/487 (94%)	0.21	6 (1%) 74 78	19, 38, 59, 80	1 (0%)
All	All	1846/1948 (94%)	0.15	27 (1%) 71 75	15, 36, 60, 82	5 (0%)

The worst 5 of 27 RSRZ outliers are listed below:

Mol	Chain	Res	Type	RSRZ
1	D	388	TRP	4.7
1	B	351	TRP	4.5
1	A	388	TRP	3.5
1	D	453	GLY	3.3
1	B	408	GLN	3.2

6.2 Non-standard residues in protein, DNA, RNA chains [i](#)

There are no non-standard protein/DNA/RNA residues in this entry.

6.3 Carbohydrates [i](#)

There are no oligosaccharides in this entry.

6.4 Ligands [i](#)

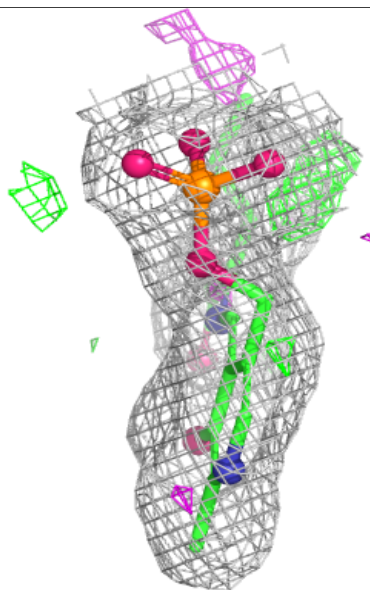
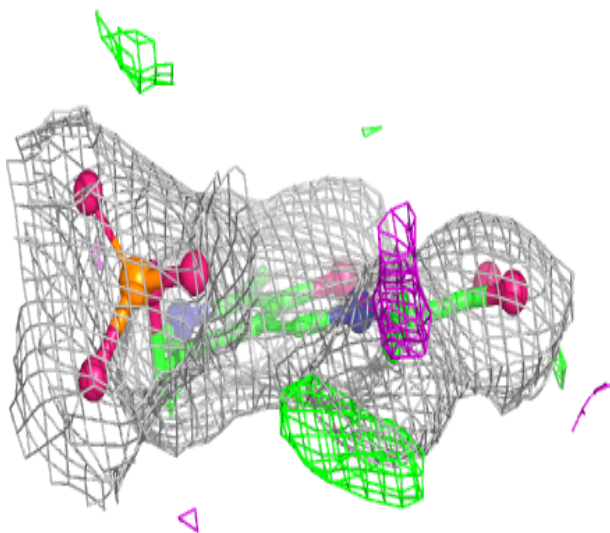
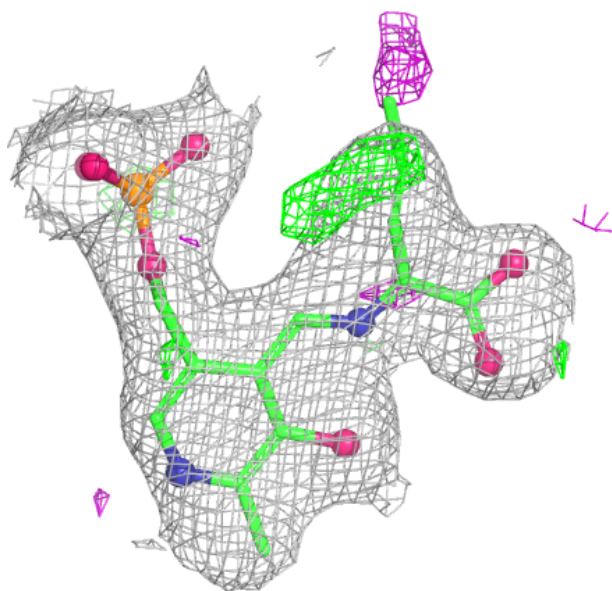
In the following table, the Atoms column lists the number of modelled atoms in the group and the number defined in the chemical component dictionary. The B-factors column lists the minimum, median, 95th percentile and maximum values of B factors of atoms in the group. The column labelled ‘Q< 0.9’ lists the number of atoms with occupancy less than 0.9.

Mol	Type	Chain	Res	Atoms	RSCC	RSR	B-factors(\AA^2)	Q<0.9
5	PEG	B	503	7/7	0.78	0.15	39,42,51,52	0
6	EDO	C	503	4/4	0.85	0.11	29,32,40,40	0
6	EDO	B	504	4/4	0.86	0.15	23,29,33,35	0
4	TRS	C	504	8/8	0.87	0.11	31,36,41,45	0
4	TRS	B	502	8/8	0.90	0.10	34,38,43,53	0
3	ACY	A	502	4/4	0.91	0.11	43,46,48,50	0
6	EDO	C	502	4/4	0.92	0.12	23,23,33,38	0
9	K	E	3	1/1	0.92	0.12	57,57,57,57	0
2	A1BDC	A	501	23/23	0.94	0.09	24,28,37,42	0
2	A1BDC	C	501	23/23	0.94	0.08	23,30,40,41	0
2	A1BDC	B	501	23/23	0.95	0.07	20,26,37,43	0
7	NA	F	5	1/1	0.95	0.26	38,38,38,38	0
9	K	E	1	1/1	0.95	0.06	39,39,39,39	0
2	A1BDC	D	501	23/23	0.95	0.08	22,28,38,39	0
8	CL	G	3	1/1	0.96	0.14	38,38,38,38	0
9	K	E	2	1/1	0.97	0.17	55,55,55,55	0

The following is a graphical depiction of the model fit to experimental electron density of all instances of the Ligand of Interest. In addition, ligands with molecular weight > 250 and outliers as shown on the geometry validation Tables will also be included. Each fit is shown from different orientation to approximate a three-dimensional view.

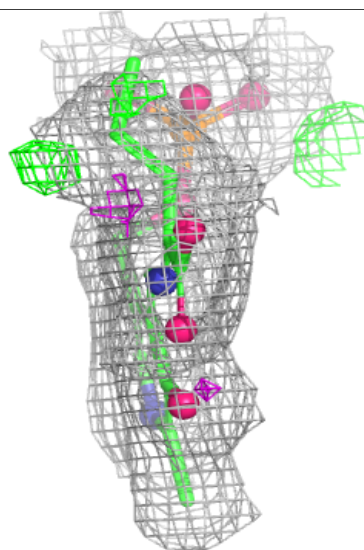
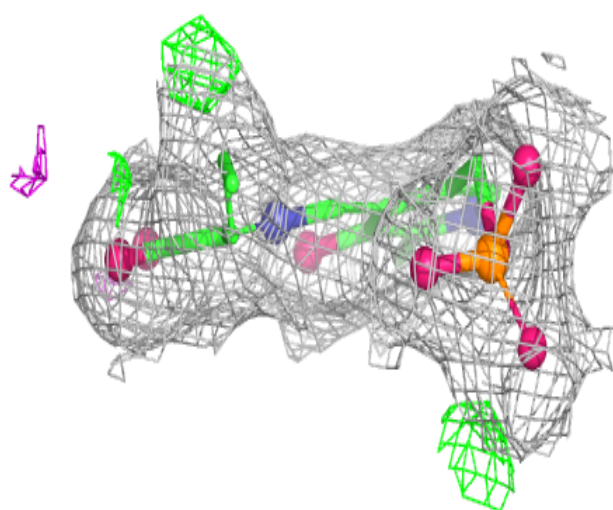
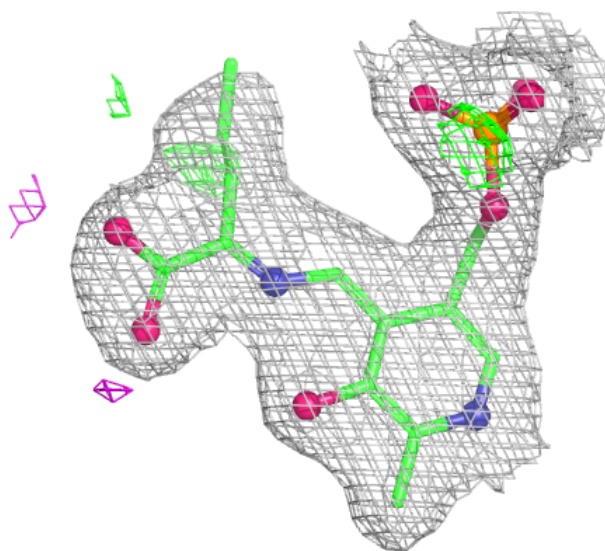
Electron density around A1BDC A 501:

$2mF_o-DF_c$ (at 0.7 rmsd) in gray
 mF_o-DF_c (at 3 rmsd) in purple (negative)
and green (positive)



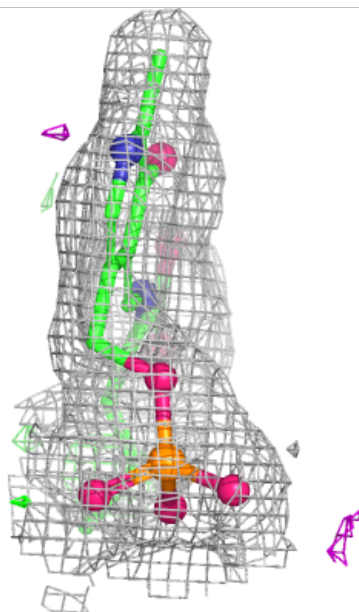
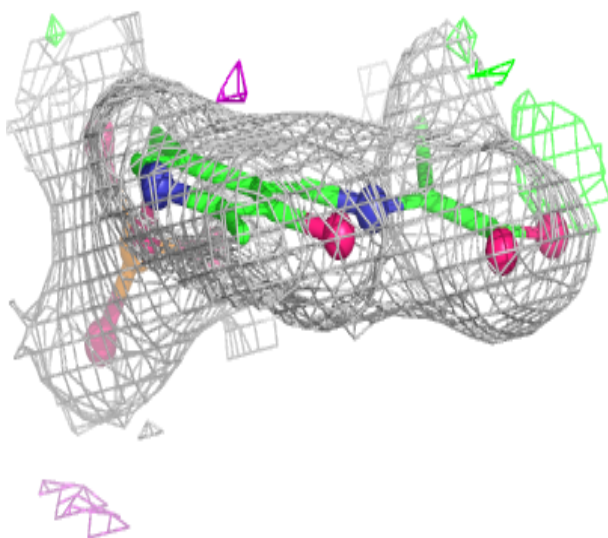
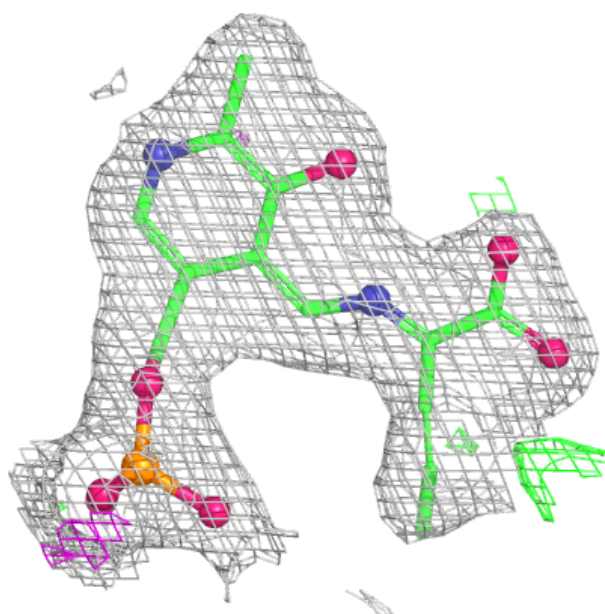
Electron density around A1BDC C 501:

$2mF_o-DF_c$ (at 0.7 rmsd) in gray
 mF_o-DF_c (at 3 rmsd) in purple (negative)
and green (positive)



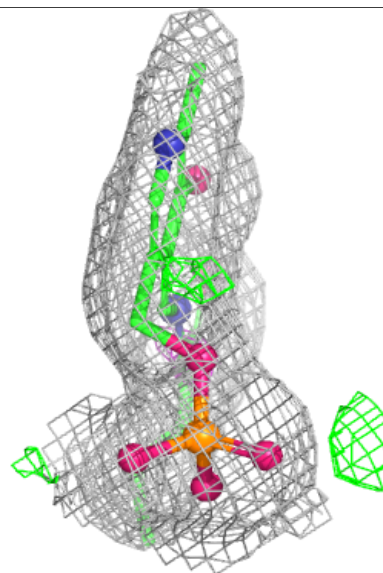
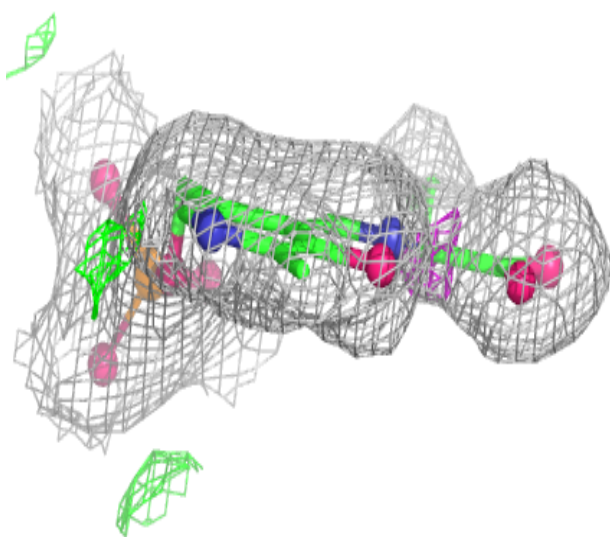
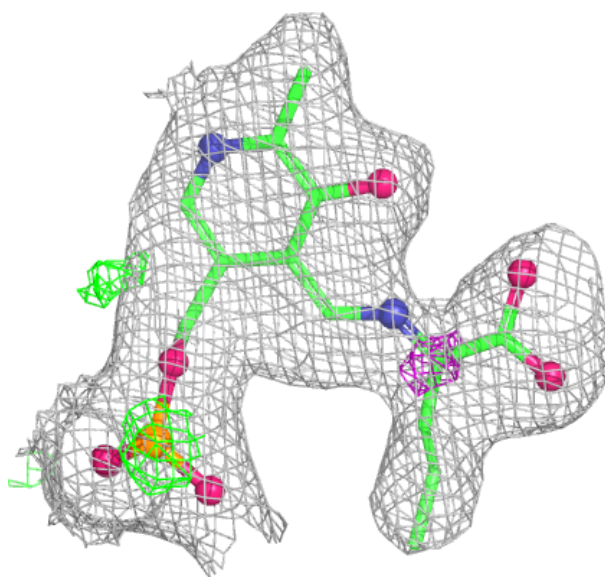
Electron density around A1BDC B 501:

$2mF_o-DF_c$ (at 0.7 rmsd) in gray
 mF_o-DF_c (at 3 rmsd) in purple (negative)
and green (positive)



Electron density around A1BDC D 501:

2mF_o-DF_c (at 0.7 rmsd) in gray
mF_o-DF_c (at 3 rmsd) in purple (negative)
and green (positive)



6.5 Other polymers [i](#)

There are no such residues in this entry.