



# Full wwPDB EM Validation Report ⓘ

Jun 30, 2025 – 06:19 PM EDT

PDB ID : 9E0Y / pdb\_00009e0y  
EMDB ID : EMD-47377  
Title : Cryo-EM structure of human cytoplasmic dynein-1 in the presence of ATP  
Authors : Nguyen, K.H.V.; Kendrick, A.A.; Leschziner, A.E.  
Deposited on : 2024-10-20  
Resolution : 3.40 Å(reported)

This is a Full wwPDB EM Validation Report for a publicly released PDB entry.

We welcome your comments at [validation@mail.wwpdb.org](mailto:validation@mail.wwpdb.org)

A user guide is available at

<https://www.wwpdb.org/validation/2017/EMValidationReportHelp>

with specific help available everywhere you see the ⓘ symbol.

The types of validation reports are described at

<http://www.wwpdb.org/validation/2017/FAQs#types>.

---

The following versions of software and data (see [references ⓘ](#)) were used in the production of this report:

EMDB validation analysis : 0.0.1.dev118  
Mogul : 2022.3.0, CSD as543be (2022)  
MolProbity : 4-5-2 with Phenix2.0rc1  
buster-report : 1.1.7 (2018)  
Percentile statistics : 20231227.v01 (using entries in the PDB archive December 27th 2023)  
MapQ : 1.9.13  
Ideal geometry (proteins) : Engh & Huber (2001)  
Ideal geometry (DNA, RNA) : Parkinson et al. (1996)  
Validation Pipeline (wwPDB-VP) : 2.44

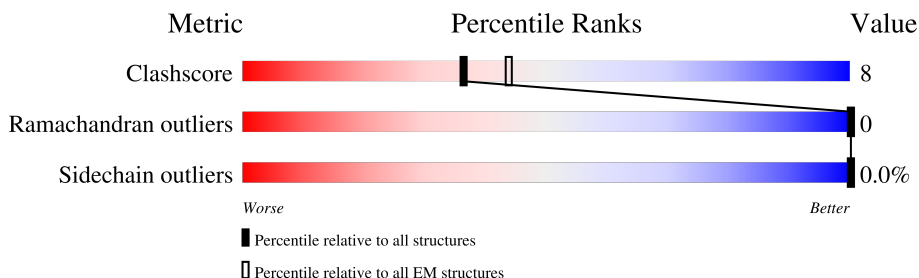
# 1 Overall quality at a glance

The following experimental techniques were used to determine the structure:

*ELECTRON MICROSCOPY*

The reported resolution of this entry is 3.40 Å.

Percentile scores (ranging between 0-100) for global validation metrics of the entry are shown in the following graphic. The table shows the number of entries on which the scores are based.



Metric	Whole archive (#Entries)	EM structures (#Entries)
Clashscore	210492	15764
Ramachandran outliers	207382	16835
Sidechain outliers	206894	16415

The table below summarises the geometric issues observed across the polymeric chains and their fit to the map. The red, orange, yellow and green segments of the bar indicate the fraction of residues that contain outliers for  $\geq 3$ , 2, 1 and 0 types of geometric quality criteria respectively. A grey segment represents the fraction of residues that are not modelled. The numeric value for each fraction is indicated below the corresponding segment, with a dot representing fractions  $\leq 5\%$ . The upper red bar (where present) indicates the fraction of residues that have poor fit to the EM map (all-atom inclusion  $< 40\%$ ). The numeric value is given above the bar.

Mol	Chain	Length	Quality of chain
1	A	4843	

## 2 Entry composition

There are 3 unique types of molecules in this entry. The entry contains 22201 atoms, of which 0 are hydrogens and 0 are deuteriums.

In the tables below, the AltConf column contains the number of residues with at least one atom in alternate conformation and the Trace column contains the number of residues modelled with at most 2 atoms.

- Molecule 1 is a protein called Cytoplasmic dynein 1 heavy chain 1.

Mol	Chain	Residues	Atoms					AltConf	Trace
1	A	2753	Total	C	N	O	S	0	0
			22085	14040	3818	4115	112		

There are 198 discrepancies between the modelled and reference sequences:

Chain	Residue	Modelled	Actual	Comment	Reference
A	-196	GLY	-	expression tag	UNP Q14204
A	-195	ASP	-	expression tag	UNP Q14204
A	-194	TYR	-	expression tag	UNP Q14204
A	-193	ASP	-	expression tag	UNP Q14204
A	-192	ILE	-	expression tag	UNP Q14204
A	-191	PRO	-	expression tag	UNP Q14204
A	-190	THR	-	expression tag	UNP Q14204
A	-189	THR	-	expression tag	UNP Q14204
A	-188	GLU	-	expression tag	UNP Q14204
A	-187	ASN	-	expression tag	UNP Q14204
A	-186	LEU	-	expression tag	UNP Q14204
A	-185	TYR	-	expression tag	UNP Q14204
A	-184	PHE	-	expression tag	UNP Q14204
A	-183	GLN	-	expression tag	UNP Q14204
A	-182	GLY	-	expression tag	UNP Q14204
A	-181	ASP	-	expression tag	UNP Q14204
A	-180	LYS	-	expression tag	UNP Q14204
A	-179	ASP	-	expression tag	UNP Q14204
A	-178	CYS	-	expression tag	UNP Q14204
A	-177	GLU	-	expression tag	UNP Q14204
A	-176	MET	-	expression tag	UNP Q14204
A	-175	LYS	-	expression tag	UNP Q14204
A	-174	ARG	-	expression tag	UNP Q14204
A	-173	THR	-	expression tag	UNP Q14204
A	-172	THR	-	expression tag	UNP Q14204
A	-171	LEU	-	expression tag	UNP Q14204
A	-170	ASP	-	expression tag	UNP Q14204
A	-169	SER	-	expression tag	UNP Q14204

*Continued on next page...*

*Continued from previous page...*

Chain	Residue	Modelled	Actual	Comment	Reference
A	-168	PRO	-	expression tag	UNP Q14204
A	-167	LEU	-	expression tag	UNP Q14204
A	-166	GLY	-	expression tag	UNP Q14204
A	-165	LYS	-	expression tag	UNP Q14204
A	-164	LEU	-	expression tag	UNP Q14204
A	-163	GLU	-	expression tag	UNP Q14204
A	-162	LEU	-	expression tag	UNP Q14204
A	-161	SER	-	expression tag	UNP Q14204
A	-160	GLY	-	expression tag	UNP Q14204
A	-159	CYS	-	expression tag	UNP Q14204
A	-158	GLU	-	expression tag	UNP Q14204
A	-157	GLN	-	expression tag	UNP Q14204
A	-156	GLY	-	expression tag	UNP Q14204
A	-155	LEU	-	expression tag	UNP Q14204
A	-154	HIS	-	expression tag	UNP Q14204
A	-153	ARG	-	expression tag	UNP Q14204
A	-152	ILE	-	expression tag	UNP Q14204
A	-151	ILE	-	expression tag	UNP Q14204
A	-150	PHE	-	expression tag	UNP Q14204
A	-149	LEU	-	expression tag	UNP Q14204
A	-148	GLY	-	expression tag	UNP Q14204
A	-147	LYS	-	expression tag	UNP Q14204
A	-146	GLY	-	expression tag	UNP Q14204
A	-145	THR	-	expression tag	UNP Q14204
A	-144	SER	-	expression tag	UNP Q14204
A	-143	ALA	-	expression tag	UNP Q14204
A	-142	ALA	-	expression tag	UNP Q14204
A	-141	ASP	-	expression tag	UNP Q14204
A	-140	ALA	-	expression tag	UNP Q14204
A	-139	VAL	-	expression tag	UNP Q14204
A	-138	GLU	-	expression tag	UNP Q14204
A	-137	VAL	-	expression tag	UNP Q14204
A	-136	PRO	-	expression tag	UNP Q14204
A	-135	ALA	-	expression tag	UNP Q14204
A	-134	PRO	-	expression tag	UNP Q14204
A	-133	ALA	-	expression tag	UNP Q14204
A	-132	ALA	-	expression tag	UNP Q14204
A	-131	VAL	-	expression tag	UNP Q14204
A	-130	LEU	-	expression tag	UNP Q14204
A	-129	GLY	-	expression tag	UNP Q14204
A	-128	GLY	-	expression tag	UNP Q14204
A	-127	PRO	-	expression tag	UNP Q14204

*Continued on next page...*

*Continued from previous page...*

Chain	Residue	Modelled	Actual	Comment	Reference
A	-126	GLU	-	expression tag	UNP Q14204
A	-125	PRO	-	expression tag	UNP Q14204
A	-124	LEU	-	expression tag	UNP Q14204
A	-123	MET	-	expression tag	UNP Q14204
A	-122	GLN	-	expression tag	UNP Q14204
A	-121	ALA	-	expression tag	UNP Q14204
A	-120	THR	-	expression tag	UNP Q14204
A	-119	ALA	-	expression tag	UNP Q14204
A	-118	TRP	-	expression tag	UNP Q14204
A	-117	LEU	-	expression tag	UNP Q14204
A	-116	ASN	-	expression tag	UNP Q14204
A	-115	ALA	-	expression tag	UNP Q14204
A	-114	TYR	-	expression tag	UNP Q14204
A	-113	PHE	-	expression tag	UNP Q14204
A	-112	HIS	-	expression tag	UNP Q14204
A	-111	GLN	-	expression tag	UNP Q14204
A	-110	PRO	-	expression tag	UNP Q14204
A	-109	GLU	-	expression tag	UNP Q14204
A	-108	ALA	-	expression tag	UNP Q14204
A	-107	ILE	-	expression tag	UNP Q14204
A	-106	GLU	-	expression tag	UNP Q14204
A	-105	GLU	-	expression tag	UNP Q14204
A	-104	PHE	-	expression tag	UNP Q14204
A	-103	PRO	-	expression tag	UNP Q14204
A	-102	VAL	-	expression tag	UNP Q14204
A	-101	PRO	-	expression tag	UNP Q14204
A	-100	ALA	-	expression tag	UNP Q14204
A	-99	LEU	-	expression tag	UNP Q14204
A	-98	HIS	-	expression tag	UNP Q14204
A	-97	HIS	-	expression tag	UNP Q14204
A	-96	PRO	-	expression tag	UNP Q14204
A	-95	VAL	-	expression tag	UNP Q14204
A	-94	PHE	-	expression tag	UNP Q14204
A	-93	GLN	-	expression tag	UNP Q14204
A	-92	GLN	-	expression tag	UNP Q14204
A	-91	GLU	-	expression tag	UNP Q14204
A	-90	SER	-	expression tag	UNP Q14204
A	-89	PHE	-	expression tag	UNP Q14204
A	-88	THR	-	expression tag	UNP Q14204
A	-87	ARG	-	expression tag	UNP Q14204
A	-86	GLN	-	expression tag	UNP Q14204
A	-85	VAL	-	expression tag	UNP Q14204

*Continued on next page...*

*Continued from previous page...*

Chain	Residue	Modelled	Actual	Comment	Reference
A	-84	LEU	-	expression tag	UNP Q14204
A	-83	TRP	-	expression tag	UNP Q14204
A	-82	LYS	-	expression tag	UNP Q14204
A	-81	LEU	-	expression tag	UNP Q14204
A	-80	LEU	-	expression tag	UNP Q14204
A	-79	LYS	-	expression tag	UNP Q14204
A	-78	VAL	-	expression tag	UNP Q14204
A	-77	VAL	-	expression tag	UNP Q14204
A	-76	LYS	-	expression tag	UNP Q14204
A	-75	PHE	-	expression tag	UNP Q14204
A	-74	GLY	-	expression tag	UNP Q14204
A	-73	GLU	-	expression tag	UNP Q14204
A	-72	VAL	-	expression tag	UNP Q14204
A	-71	ILE	-	expression tag	UNP Q14204
A	-70	SER	-	expression tag	UNP Q14204
A	-69	TYR	-	expression tag	UNP Q14204
A	-68	SER	-	expression tag	UNP Q14204
A	-67	HIS	-	expression tag	UNP Q14204
A	-66	LEU	-	expression tag	UNP Q14204
A	-65	ALA	-	expression tag	UNP Q14204
A	-64	ALA	-	expression tag	UNP Q14204
A	-63	LEU	-	expression tag	UNP Q14204
A	-62	ALA	-	expression tag	UNP Q14204
A	-61	GLY	-	expression tag	UNP Q14204
A	-60	ASN	-	expression tag	UNP Q14204
A	-59	PRO	-	expression tag	UNP Q14204
A	-58	ALA	-	expression tag	UNP Q14204
A	-57	ALA	-	expression tag	UNP Q14204
A	-56	THR	-	expression tag	UNP Q14204
A	-55	ALA	-	expression tag	UNP Q14204
A	-54	ALA	-	expression tag	UNP Q14204
A	-53	VAL	-	expression tag	UNP Q14204
A	-52	LYS	-	expression tag	UNP Q14204
A	-51	THR	-	expression tag	UNP Q14204
A	-50	ALA	-	expression tag	UNP Q14204
A	-49	LEU	-	expression tag	UNP Q14204
A	-48	SER	-	expression tag	UNP Q14204
A	-47	GLY	-	expression tag	UNP Q14204
A	-46	ASN	-	expression tag	UNP Q14204
A	-45	PRO	-	expression tag	UNP Q14204
A	-44	VAL	-	expression tag	UNP Q14204
A	-43	PRO	-	expression tag	UNP Q14204

*Continued on next page...*

*Continued from previous page...*

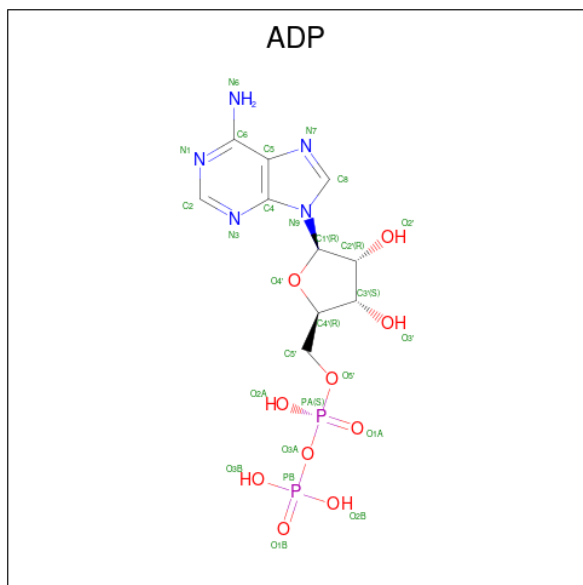
Chain	Residue	Modelled	Actual	Comment	Reference
A	-42	ILE	-	expression tag	UNP Q14204
A	-41	LEU	-	expression tag	UNP Q14204
A	-40	ILE	-	expression tag	UNP Q14204
A	-39	PRO	-	expression tag	UNP Q14204
A	-38	CYS	-	expression tag	UNP Q14204
A	-37	HIS	-	expression tag	UNP Q14204
A	-36	ARG	-	expression tag	UNP Q14204
A	-35	VAL	-	expression tag	UNP Q14204
A	-34	VAL	-	expression tag	UNP Q14204
A	-33	GLN	-	expression tag	UNP Q14204
A	-32	GLY	-	expression tag	UNP Q14204
A	-31	ASP	-	expression tag	UNP Q14204
A	-30	LEU	-	expression tag	UNP Q14204
A	-29	ASP	-	expression tag	UNP Q14204
A	-28	VAL	-	expression tag	UNP Q14204
A	-27	GLY	-	expression tag	UNP Q14204
A	-26	GLY	-	expression tag	UNP Q14204
A	-25	TYR	-	expression tag	UNP Q14204
A	-24	GLU	-	expression tag	UNP Q14204
A	-23	GLY	-	expression tag	UNP Q14204
A	-22	GLY	-	expression tag	UNP Q14204
A	-21	LEU	-	expression tag	UNP Q14204
A	-20	ALA	-	expression tag	UNP Q14204
A	-19	VAL	-	expression tag	UNP Q14204
A	-18	LYS	-	expression tag	UNP Q14204
A	-17	GLU	-	expression tag	UNP Q14204
A	-16	TRP	-	expression tag	UNP Q14204
A	-15	LEU	-	expression tag	UNP Q14204
A	-14	LEU	-	expression tag	UNP Q14204
A	-13	ALA	-	expression tag	UNP Q14204
A	-12	HIS	-	expression tag	UNP Q14204
A	-11	GLU	-	expression tag	UNP Q14204
A	-10	GLY	-	expression tag	UNP Q14204
A	-9	HIS	-	expression tag	UNP Q14204
A	-8	ARG	-	expression tag	UNP Q14204
A	-7	LEU	-	expression tag	UNP Q14204
A	-6	GLY	-	expression tag	UNP Q14204
A	-5	LYS	-	expression tag	UNP Q14204
A	-4	PRO	-	expression tag	UNP Q14204
A	-3	GLY	-	expression tag	UNP Q14204
A	-2	LEU	-	expression tag	UNP Q14204
A	-1	GLY	-	expression tag	UNP Q14204

*Continued on next page...*

Continued from previous page...

Chain	Residue	Modelled	Actual	Comment	Reference
A	0	GLY	-	expression tag	UNP Q14204
A	1	SER	-	expression tag	UNP Q14204

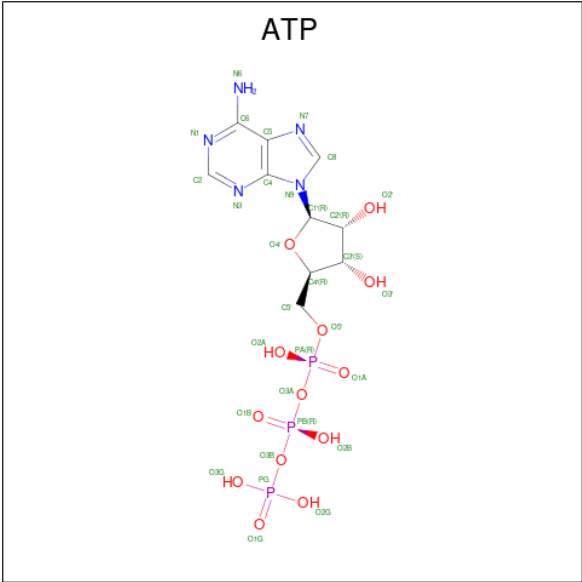
- Molecule 2 is ADENOSINE-5'-DIPHOSPHATE (CCD ID: ADP) (formula:  $C_{10}H_{15}N_5O_{10}P_2$ ) (labeled as "Ligand of Interest" by depositor).



Mol	Chain	Residues	Atoms					AltConf
2	A	1	Total	C	N	O	P	0
			27	10	5	10	2	
2	A	1	Total	C	N	O	P	0
			27	10	5	10	2	

- Molecule 3 is ADENOSINE-5'-TRIPHOSPHATE (CCD ID: ATP) (formula:  $C_{10}H_{16}N_5O_{13}P_3$ ).





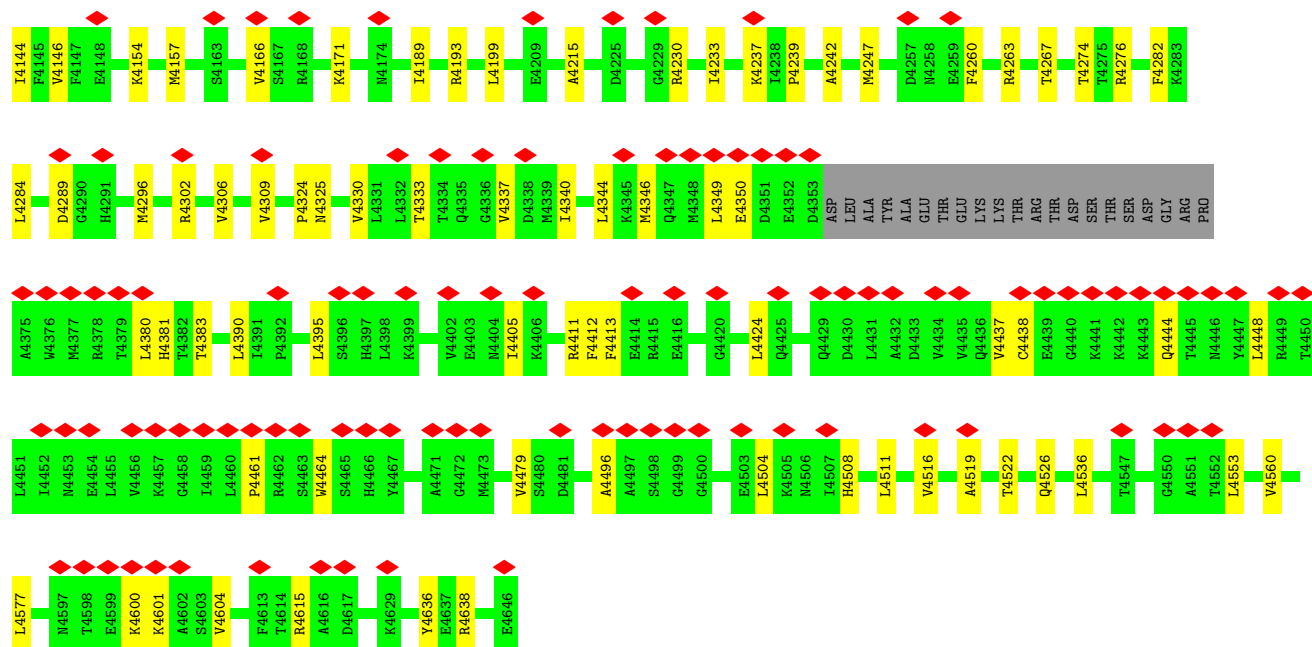
Mol	Chain	Residues	Atoms					AltConf
3	A	1	Total	C	N	O	P	0
			31	10	5	13	3	
3	A	1	Total	C	N	O	P	0
			31	10	5	13	3	











## 4 Experimental information

Property	Value	Source
EM reconstruction method	SINGLE PARTICLE	Depositor
Imposed symmetry	POINT, Not provided	
Number of particles used	50952	Depositor
Resolution determination method	FSC 0.143 CUT-OFF	Depositor
CTF correction method	PHASE FLIPPING AND AMPLITUDE CORRECTION	Depositor
Microscope	TFS KRIOS	Depositor
Voltage (kV)	300	Depositor
Electron dose ( $e^-/\text{\AA}^2$ )	55	Depositor
Minimum defocus (nm)	610	Depositor
Maximum defocus (nm)	3250	Depositor
Magnification	Not provided	
Image detector	FEI FALCON IV (4k x 4k)	Depositor
Maximum map value	0.506	Depositor
Minimum map value	-0.279	Depositor
Average map value	0.001	Depositor
Map value standard deviation	0.013	Depositor
Recommended contour level	0.1	Depositor
Map size (Å)	329.12, 329.12, 329.12	wwPDB
Map dimensions	352, 352, 352	wwPDB
Map angles (°)	90.0, 90.0, 90.0	wwPDB
Pixel spacing (Å)	0.935, 0.935, 0.935	Depositor

## 5 Model quality [i](#)

### 5.1 Standard geometry [i](#)

Bond lengths and bond angles in the following residue types are not validated in this section: ATP, ADP

The Z score for a bond length (or angle) is the number of standard deviations the observed value is removed from the expected value. A bond length (or angle) with  $|Z| > 5$  is considered an outlier worth inspection. RMSZ is the root-mean-square of all Z scores of the bond lengths (or angles).

Mol	Chain	Bond lengths		Bond angles	
		RMSZ	$\# Z  > 5$	RMSZ	$\# Z  > 5$
1	A	0.18	0/22554	0.42	1/30568 (0.0%)

There are no bond length outliers.

All (1) bond angle outliers are listed below:

Mol	Chain	Res	Type	Atoms	Z	Observed( $^{\circ}$ )	Ideal( $^{\circ}$ )
1	A	4004	MET	CB-CG-SD	-5.03	97.62	112.70

There are no chirality outliers.

There are no planarity outliers.

### 5.2 Too-close contacts [i](#)

In the following table, the Non-H and H(model) columns list the number of non-hydrogen atoms and hydrogen atoms in the chain respectively. The H(added) column lists the number of hydrogen atoms added and optimized by MolProbity. The Clashes column lists the number of clashes within the asymmetric unit, whereas Symm-Clashes lists symmetry-related clashes.

Mol	Chain	Non-H	H(model)	H(added)	Clashes	Symm-Clashes
1	A	22085	0	22082	334	0
2	A	54	0	24	0	0
3	A	62	0	24	0	0
All	All	22201	0	22130	334	0

The all-atom clashscore is defined as the number of clashes found per 1000 atoms (including hydrogen atoms). The all-atom clashscore for this structure is 8.

All (334) close contacts within the same asymmetric unit are listed below, sorted by their clash magnitude.



Atom-1	Atom-2	Interatomic distance (Å)	Clash overlap (Å)
1:A:3600:ILE:O	1:A:3604:TYR:HB2	1.81	0.79
1:A:4437:VAL:HG21	1:A:4444:GLN:HG3	1.65	0.77
1:A:2854:ALA:O	1:A:2858:PHE:HB2	1.85	0.76
1:A:1623:ARG:HH21	1:A:1946:VAL:HG12	1.51	0.74
1:A:3208:ILE:HD13	1:A:3751:GLN:HB2	1.76	0.68
1:A:4004:MET:HA	1:A:4007:MET:HG3	1.76	0.68
1:A:1690:VAL:HG21	1:A:1705:VAL:HA	1.76	0.67
1:A:2601:LYS:HB3	1:A:2736:VAL:HG21	1.76	0.67
1:A:1879:LEU:HB3	1:A:1918:ALA:HB2	1.75	0.67
1:A:2503:SER:HB3	1:A:2514:LEU:HD23	1.76	0.67
1:A:1899:ARG:HG2	1:A:1985:HIS:HB2	1.76	0.66
1:A:2323:LYS:HD2	1:A:2335:LEU:HB3	1.78	0.66
1:A:3818:LEU:HA	1:A:4346:MET:HE1	1.77	0.66
1:A:1721:VAL:HA	1:A:1724:VAL:HG12	1.77	0.65
1:A:2992:PHE:HB3	1:A:3064:VAL:HG22	1.79	0.65
1:A:2890:ARG:HB3	1:A:2894:LYS:HZ3	1.62	0.64
1:A:1978:ILE:HD11	1:A:2001:LEU:HD21	1.79	0.64
1:A:3214:GLN:HB3	1:A:3757:LYS:H	1.62	0.64
1:A:3878:GLN:HE22	1:A:4002:LEU:HD21	1.64	0.63
1:A:3983:ILE:HD13	1:A:4012:ASN:HB3	1.79	0.63
1:A:1880:VAL:HG11	1:A:2052:VAL:HG11	1.81	0.63
1:A:2956:LEU:HD21	1:A:2989:LYS:HE2	1.80	0.63
1:A:3888:ALA:HB1	1:A:4012:ASN:HD21	1.64	0.62
1:A:3874:GLY:HA2	1:A:4146:VAL:H	1.65	0.62
1:A:2999:VAL:HG11	1:A:3078:ARG:HH11	1.65	0.61
1:A:1654:PHE:HA	1:A:1657:MET:HB3	1.82	0.61
1:A:1975:VAL:HG21	1:A:2016:ILE:HD11	1.82	0.61
1:A:3745:LEU:HB2	1:A:3773:LEU:HD21	1.83	0.61
1:A:2749:GLY:HA2	1:A:2770:THR:HG21	1.83	0.60
1:A:4461:PRO:HD2	1:A:4464:TRP:HD1	1.67	0.60
1:A:1724:VAL:HA	1:A:1727:PHE:HB2	1.84	0.60
1:A:2220:LEU:HA	1:A:2359:CYS:HB3	1.84	0.60
1:A:2472:TYR:HE2	1:A:2481:MET:HB3	1.67	0.59
1:A:2248:GLU:HB3	1:A:2297:LYS:HG3	1.83	0.59
1:A:2047:GLN:HA	1:A:2070:VAL:HG21	1.84	0.59
1:A:3128:VAL:HA	1:A:3145:ASN:HD21	1.68	0.58
1:A:3661:LEU:HD21	1:A:3675:PHE:H	1.67	0.58
1:A:2085:HIS:HB3	1:A:2348:LEU:HD21	1.85	0.58
1:A:2382:LEU:HD23	1:A:2420:ALA:HB2	1.86	0.57
1:A:2619:GLY:HA2	1:A:2662:PHE:HB3	1.85	0.57
1:A:2628:PRO:HG2	1:A:2682:PHE:CD2	2.38	0.57
1:A:3190:LYS:HD3	1:A:3503:ILE:HD11	1.87	0.57

Continued on next page...

*Continued from previous page...*

Atom-1	Atom-2	Interatomic distance (Å)	Clash overlap (Å)
1:A:2294:GLU:HG2	1:A:2299:GLN:HE21	1.68	0.57
1:A:2316:ASN:O	1:A:2320:ASP:HB2	2.05	0.57
1:A:4239:PRO:HB2	1:A:4242:ALA:HB3	1.85	0.57
1:A:2518:ILE:O	1:A:2522:THR:HB	2.05	0.56
1:A:2548:TRP:CE2	1:A:2576:ARG:HG2	2.40	0.56
1:A:2757:ARG:HA	1:A:2763:ARG:HH12	1.70	0.56
1:A:2071:PRO:O	1:A:2075:LEU:HB2	2.05	0.56
1:A:2548:TRP:HB2	1:A:2572:LEU:HD12	1.86	0.56
1:A:3909:LEU:HD21	1:A:4344:LEU:HA	1.87	0.56
1:A:3944:PHE:HB3	1:A:3947:LEU:HB2	1.86	0.56
1:A:1979:GLN:HB3	1:A:2035:LEU:HD13	1.88	0.56
1:A:3520:PHE:HB3	1:A:3524:MET:HB3	1.88	0.56
1:A:4282:PHE:HB3	1:A:4296:MET:HE1	1.88	0.56
1:A:2503:SER:HB2	1:A:2511:ARG:HA	1.87	0.56
1:A:3839:VAL:HG21	1:A:3863:LEU:HA	1.88	0.56
1:A:2751:PHE:O	1:A:2755:MET:HB2	2.05	0.56
1:A:2872:LEU:HD22	1:A:2889:LEU:HD22	1.87	0.56
1:A:2437:LEU:HD21	1:A:2451:ARG:HG3	1.88	0.55
1:A:2890:ARG:HA	1:A:2893:VAL:HG12	1.87	0.55
1:A:3556:ALA:HB3	1:A:3737:GLU:H	1.72	0.55
1:A:3012:LEU:HD22	1:A:3088:ARG:HB3	1.88	0.55
1:A:3873:ARG:HE	1:A:4030:ILE:HD13	1.70	0.55
1:A:1640:ILE:HG12	1:A:1650:LEU:HG	1.89	0.55
1:A:2841:GLU:HG2	1:A:2844:ARG:HH21	1.72	0.55
1:A:2281:THR:HG22	1:A:2325:LEU:HD21	1.89	0.55
1:A:3947:LEU:HA	1:A:3950:LYS:HD2	1.89	0.54
1:A:1830:ILE:HD12	1:A:1837:GLU:HB3	1.88	0.54
1:A:3009:ASN:HD21	1:A:3085:LEU:HG	1.71	0.54
1:A:4107:MET:HE1	1:A:4137:ASN:HD21	1.73	0.54
1:A:3649:LEU:HD21	1:A:3696:VAL:HB	1.88	0.53
1:A:2933:LEU:HB3	1:A:3065:VAL:HG12	1.90	0.53
1:A:4230:ARG:HE	1:A:4233:ILE:HG22	1.73	0.53
1:A:4516:VAL:HG22	1:A:4519:ALA:H	1.74	0.53
1:A:1881:GLN:HG2	1:A:1889:TYR:HE2	1.73	0.53
1:A:2759:ILE:HD12	1:A:2762:LEU:HD13	1.89	0.53
1:A:3471:LYS:HG2	1:A:3761:LEU:HD13	1.89	0.53
1:A:2938:VAL:HA	1:A:3070:PRO:HD3	1.91	0.53
1:A:3519:TYR:HB2	1:A:3698:PHE:HB2	1.91	0.53
1:A:1832:ASN:HB3	1:A:1835:SER:HB2	1.90	0.53
1:A:2222:MET:HE1	1:A:2342:MET:HB3	1.90	0.53
1:A:2876:TRP:CG	1:A:2892:TYR:HH	2.26	0.53

*Continued on next page...*

*Continued from previous page...*

Atom-1	Atom-2	Interatomic distance (Å)	Clash overlap (Å)
1:A:1658:PHE:HB2	1:A:1661:VAL:HB	1.91	0.53
1:A:3704:THR:HG22	1:A:3705:ARG:H	1.74	0.53
1:A:3967:GLU:HB3	1:A:4004:MET:HE2	1.90	0.53
1:A:4381:HIS:HB2	1:A:4438:CYS:HB3	1.90	0.53
1:A:2609:LEU:HB3	1:A:2617:VAL:HG21	1.91	0.53
1:A:2262:ASP:HB2	1:A:2267:THR:HB	1.90	0.52
1:A:2450:THR:HG22	1:A:2453:ARG:H	1.75	0.52
1:A:2823:ARG:HE	1:A:2883:PRO:HB3	1.74	0.52
1:A:3597:THR:HA	1:A:3634:LEU:HD23	1.90	0.52
1:A:1766:LEU:HD23	1:A:1833:ALA:HA	1.92	0.52
1:A:4284:LEU:HG	1:A:4296:MET:HG3	1.90	0.52
1:A:2452:LEU:HD22	1:A:2729:ARG:HG2	1.92	0.52
1:A:2386:PRO:HA	1:A:2413:LEU:HD11	1.92	0.52
1:A:4306:VAL:HA	1:A:4309:VAL:HG22	1.92	0.52
1:A:3556:ALA:HA	1:A:3559:ARG:HB2	1.91	0.52
1:A:4267:THR:HG21	1:A:4636:TYR:HD2	1.75	0.52
1:A:3938:LEU:HD21	1:A:3995:ALA:HB2	1.92	0.52
1:A:3200:HIS:HE1	1:A:3747:LYS:HB2	1.73	0.52
1:A:4215:ALA:HB1	1:A:4247:MET:HE1	1.91	0.51
1:A:4337:VAL:HA	1:A:4340:ILE:HD12	1.92	0.51
1:A:3757:LYS:HD3	1:A:3759:ARG:HE	1.75	0.51
1:A:4092:ARG:HE	1:A:4094:VAL:HG22	1.76	0.51
1:A:3126:MET:HG3	1:A:3128:VAL:HG23	1.92	0.51
1:A:2457:SER:HB2	1:A:2732:PRO:HB3	1.92	0.51
1:A:1830:ILE:HD11	1:A:1835:SER:HB3	1.92	0.51
1:A:1836:PHE:HA	1:A:1839:LEU:HB2	1.92	0.51
1:A:1964:GLU:O	1:A:1968:LEU:HB3	2.11	0.51
1:A:2930:GLN:HB3	1:A:3059:ILE:HG12	1.92	0.51
1:A:3909:LEU:HD11	1:A:4344:LEU:HB2	1.92	0.51
1:A:1964:GLU:O	1:A:1968:LEU:CB	2.59	0.51
1:A:3935:VAL:O	1:A:3939:SER:HB3	2.11	0.51
1:A:2553:PRO:HB2	1:A:2570:PRO:HG2	1.92	0.51
1:A:3986:ALA:HA	1:A:3989:ARG:HE	1.75	0.51
1:A:4413:PHE:HD2	1:A:4504:LEU:HD13	1.76	0.51
1:A:3575:GLU:HA	1:A:3578:ILE:HD12	1.93	0.50
1:A:4289:ASP:HA	1:A:4325:ASN:HD21	1.76	0.50
1:A:3522:GLN:HG2	1:A:3572:LEU:HD13	1.93	0.50
1:A:4324:PRO:HD3	1:A:4638:ARG:HD3	1.94	0.50
1:A:2583:THR:HG22	1:A:2584:TRP:CD1	2.46	0.50
1:A:3590:ILE:HA	1:A:3681:THR:HG22	1.92	0.50
1:A:3942:PRO:HA	1:A:3945:LYS:HG2	1.93	0.50

*Continued on next page...*

*Continued from previous page...*

Atom-1	Atom-2	Interatomic distance (Å)	Clash overlap (Å)
1:A:3010:THR:HG23	1:A:3017:VAL:HG22	1.93	0.50
1:A:2223:VAL:HG11	1:A:2348:LEU:HD23	1.93	0.50
1:A:2999:VAL:HA	1:A:3004:PHE:HZ	1.77	0.50
1:A:2413:LEU:HD23	1:A:2417:ARG:HH21	1.76	0.50
1:A:2591:LEU:HB3	1:A:2709:VAL:HG23	1.93	0.50
1:A:2410:SER:HB2	1:A:2413:LEU:HD13	1.93	0.49
1:A:2132:PRO:HB2	1:A:2135:GLU:HB2	1.94	0.49
1:A:1698:ILE:HA	1:A:1701:TRP:CD1	2.46	0.49
1:A:3499:GLN:O	1:A:3503:ILE:HB	2.12	0.49
1:A:4010:SER:HB3	1:A:4015:GLU:HG3	1.95	0.49
1:A:2972:PHE:HE2	1:A:3007:ARG:HH11	1.61	0.49
1:A:3511:ALA:HA	1:A:3514:ILE:HD12	1.94	0.49
1:A:3954:ASP:HB3	1:A:3957:PHE:HB2	1.93	0.49
1:A:4496:ALA:HB2	1:A:4504:LEU:HD21	1.93	0.49
1:A:4233:ILE:HB	1:A:4237:LYS:HD2	1.93	0.49
1:A:2427:PHE:HE2	1:A:2459:PHE:HE1	1.60	0.49
1:A:2453:ARG:HH21	1:A:2728:LEU:HD22	1.77	0.49
1:A:4071:ILE:HD12	1:A:4099:VAL:HG12	1.94	0.49
1:A:1623:ARG:HH22	1:A:1947:GLY:HA2	1.77	0.48
1:A:1850:GLN:HB2	1:A:1856:GLN:HG2	1.95	0.48
1:A:1979:GLN:HG3	1:A:2035:LEU:HD22	1.94	0.48
1:A:2181:GLU:HG3	1:A:2244:LEU:HB2	1.94	0.48
1:A:2678:ARG:O	1:A:2682:PHE:HD2	1.97	0.48
1:A:2156:LEU:HD21	1:A:4405:ILE:HG13	1.96	0.48
1:A:3151:HIS:CE1	1:A:3176:TYR:HB2	2.48	0.48
1:A:4274:THR:HG23	1:A:4276:ARG:H	1.78	0.48
1:A:1843:ARG:H	1:A:1861:MET:HE1	1.79	0.48
1:A:3169:MET:HG3	1:A:3698:PHE:HE2	1.78	0.48
1:A:3812:TYR:HA	1:A:3815:MET:HG2	1.96	0.48
1:A:3598:GLU:O	1:A:3602:ASN:HB2	2.14	0.48
1:A:2993:ILE:HD11	1:A:3067:THR:HG23	1.94	0.48
1:A:4199:LEU:HD12	1:A:4615:ARG:HH22	1.78	0.48
1:A:1812:ILE:HD13	1:A:2056:SER:HA	1.96	0.47
1:A:2684:ARG:HG3	1:A:2726:ARG:HG3	1.95	0.47
1:A:3009:ASN:HB3	1:A:3088:ARG:HH21	1.79	0.47
1:A:2284:LEU:HA	1:A:2287:ILE:HG22	1.97	0.47
1:A:3590:ILE:HG23	1:A:3700:ASN:HA	1.97	0.47
1:A:3881:ILE:HG12	1:A:4006:HIS:CE1	2.49	0.47
1:A:4395:LEU:HB2	1:A:4424:LEU:HD13	1.96	0.47
1:A:2287:ILE:HD13	1:A:2339:VAL:HG22	1.96	0.47
1:A:1638:LEU:HD12	1:A:1641:ILE:HD11	1.95	0.47

*Continued on next page...*

*Continued from previous page...*

Atom-1	Atom-2	Interatomic distance (Å)	Clash overlap (Å)
1:A:2046:ARG:HG3	1:A:2090:LEU:HD13	1.95	0.47
1:A:2752:ASN:HA	1:A:2755:MET:HB3	1.96	0.47
1:A:3743:ARG:HA	1:A:3746:GLU:HB3	1.97	0.47
1:A:4349:LEU:HD23	1:A:4350:GLU:HB2	1.96	0.47
1:A:3875:MET:HB2	1:A:3880:HIS:CD2	2.50	0.47
1:A:2492:ARG:HB3	1:A:2539:VAL:HG12	1.96	0.47
1:A:4260:PHE:HD1	1:A:4263:ARG:HH22	1.64	0.47
1:A:2893:VAL:HG13	1:A:2911:LEU:HD12	1.95	0.46
1:A:3661:LEU:HD22	1:A:3672:SER:HB3	1.95	0.46
1:A:3861:LYS:HZ3	1:A:3891:LYS:HE3	1.79	0.46
1:A:3888:ALA:HB1	1:A:4012:ASN:ND2	2.30	0.46
1:A:3749:LEU:HG	1:A:3773:LEU:HD22	1.96	0.46
1:A:4330:VAL:HA	1:A:4333:THR:HG22	1.97	0.46
1:A:3831:PHE:O	1:A:3835:ILE:HG12	2.16	0.46
1:A:2277:ASP:HB3	1:A:2282:HIS:HB2	1.96	0.46
1:A:3496:PHE:HD1	1:A:3500:MET:HE1	1.81	0.46
1:A:2816:LEU:HD12	1:A:2817:PRO:HD2	1.98	0.46
1:A:2890:ARG:HB3	1:A:2894:LYS:NZ	2.30	0.46
1:A:2897:LEU:HD23	1:A:2911:LEU:HD22	1.96	0.46
1:A:2387:LEU:HB2	1:A:2416:GLN:HE22	1.79	0.46
1:A:2605:LEU:O	1:A:2609:LEU:HB2	2.16	0.46
1:A:3190:LYS:HE2	1:A:3190:LYS:HB2	1.79	0.46
1:A:3970:VAL:HG11	1:A:3989:ARG:HG2	1.98	0.46
1:A:2680:ILE:HG12	1:A:2723:LEU:HD22	1.98	0.46
1:A:4412:PHE:HE1	1:A:4516:VAL:HG13	1.80	0.46
1:A:1825:LEU:HD22	1:A:1830:ILE:HG21	1.98	0.45
1:A:2415:ILE:HD12	1:A:2486:LEU:HD21	1.98	0.45
1:A:3154:LEU:HD23	1:A:3171:ILE:HG12	1.98	0.45
1:A:4600:LYS:HE2	1:A:4604:VAL:HG11	1.98	0.45
1:A:2156:LEU:HD13	1:A:4411:ARG:HD3	1.97	0.45
1:A:2241:LEU:HB3	1:A:2298:ARG:HH22	1.81	0.45
1:A:2393:GLU:HA	1:A:2396:ARG:HB2	1.98	0.45
1:A:3893:LYS:HG2	1:A:3900:THR:HB	1.97	0.45
1:A:2049:ILE:HD13	1:A:2090:LEU:HD21	1.98	0.45
1:A:4157:MET:HE2	1:A:4157:MET:HB3	1.73	0.45
1:A:2628:PRO:HD3	1:A:2679:VAL:HG22	1.99	0.45
1:A:2972:PHE:HE2	1:A:3007:ARG:HD2	1.81	0.45
1:A:4444:GLN:HG2	1:A:4448:LEU:HD13	1.98	0.45
1:A:2754:ALA:HA	1:A:2757:ARG:HE	1.81	0.45
1:A:4390:LEU:HD11	1:A:4479:VAL:HG12	1.99	0.45
1:A:1697:LYS:HD2	1:A:1697:LYS:HA	1.71	0.45

*Continued on next page...*

*Continued from previous page...*

Atom-1	Atom-2	Interatomic distance (Å)	Clash overlap (Å)
1:A:1738:TYR:CZ	1:A:1742:ILE:HD11	2.51	0.45
1:A:3169:MET:HE1	1:A:3519:TYR:CZ	2.51	0.45
1:A:1628:ARG:HD3	1:A:1657:MET:HE1	1.97	0.45
1:A:4230:ARG:HH21	1:A:4237:LYS:HD3	1.82	0.45
1:A:1796:VAL:HA	1:A:1805:ARG:HH22	1.82	0.44
1:A:1946:VAL:HG22	1:A:2006:VAL:HG21	2.00	0.44
1:A:2932:HIS:CE1	1:A:3064:VAL:HB	2.52	0.44
1:A:1866:PHE:HZ	1:A:1896:LEU:HB3	1.82	0.44
1:A:3017:VAL:HB	1:A:3020:LEU:HG	1.99	0.44
1:A:4003:ALA:HA	1:A:4006:HIS:HD2	1.82	0.44
1:A:2445:HIS:CD2	1:A:2449:LEU:HD13	2.53	0.44
1:A:3993:ILE:HG13	1:A:4004:MET:HE1	1.99	0.44
1:A:4070:ALA:HA	1:A:4097:LYS:HB2	1.99	0.44
1:A:1630:TYR:HE2	1:A:1946:VAL:HB	1.82	0.44
1:A:3824:LEU:HA	1:A:4139:LEU:HD13	1.99	0.44
1:A:4042:LEU:HB3	1:A:4144:ILE:HA	2.00	0.44
1:A:3596:ALA:HA	1:A:3599:PHE:HD2	1.83	0.44
1:A:4380:LEU:HA	1:A:4383:THR:HG22	2.00	0.44
1:A:3715:GLU:HG3	1:A:3718:LYS:HE3	2.00	0.44
1:A:2628:PRO:HG2	1:A:2682:PHE:CG	2.53	0.44
1:A:2745:THR:HG22	1:A:2774:VAL:HG21	2.00	0.43
1:A:1912:LYS:HG2	1:A:2041:MET:HG3	2.01	0.43
1:A:2981:ARG:O	1:A:2985:CYS:HB2	2.18	0.43
1:A:4093:TRP:HB3	1:A:4125:PHE:HE2	1.83	0.43
1:A:1948:LEU:HD23	1:A:1953:ALA:HB3	2.00	0.43
1:A:2409:ALA:HB3	1:A:2413:LEU:HD22	2.00	0.43
1:A:2743:SER:O	1:A:2747:ILE:HG22	2.19	0.43
1:A:2307:VAL:HG11	1:A:2351:ALA:HB2	2.00	0.43
1:A:2375:PHE:HB3	1:A:2427:PHE:HB3	2.01	0.43
1:A:4511:LEU:HD12	1:A:4560:VAL:HG11	2.01	0.43
1:A:2307:VAL:HB	1:A:2345:VAL:HG11	2.00	0.43
1:A:2308:ASP:HB3	1:A:2311:TRP:NE1	2.34	0.43
1:A:4009:VAL:HG13	1:A:4013:LEU:HD12	2.00	0.43
1:A:4522:THR:O	1:A:4526:GLN:HG3	2.19	0.43
1:A:2241:LEU:HB3	1:A:2298:ARG:NH2	2.33	0.43
1:A:2381:ARG:O	1:A:2385:ILE:HB	2.18	0.43
1:A:3134:PRO:HD2	1:A:3141:GLU:HG2	2.00	0.43
1:A:3187:PHE:HA	1:A:3190:LYS:HG2	2.01	0.43
1:A:3485:GLU:HB3	1:A:3489:TRP:CZ3	2.53	0.43
1:A:3908:PHE:HD1	1:A:3991:LEU:HD23	1.84	0.43
1:A:2910:VAL:HG12	1:A:2912:PHE:HD2	1.84	0.43

*Continued on next page...*

*Continued from previous page...*

Atom-1	Atom-2	Interatomic distance (Å)	Clash overlap (Å)
1:A:2972:PHE:CE2	1:A:3007:ARG:HD2	2.54	0.42
1:A:2230:LYS:NZ	1:A:2726:ARG:HH22	2.17	0.42
1:A:2660:VAL:HG22	1:A:2707:GLN:HB2	2.02	0.42
1:A:2824:ILE:HA	1:A:2873:TYR:HE2	1.83	0.42
1:A:3052:LYS:HE2	1:A:3052:LYS:HB2	1.85	0.42
1:A:3493:SER:HA	1:A:3496:PHE:CE2	2.53	0.42
1:A:4042:LEU:HD23	1:A:4144:ILE:HG23	2.01	0.42
1:A:2046:ARG:HD2	1:A:2070:VAL:HG13	2.00	0.42
1:A:2565:PRO:HG2	1:A:2603:MET:HE1	1.99	0.42
1:A:3069:ASN:HD21	1:A:3691:ASP:HB2	1.83	0.42
1:A:1792:LEU:O	1:A:1796:VAL:HB	2.19	0.42
1:A:4171:LYS:HD2	1:A:4171:LYS:HA	1.78	0.42
1:A:2254:ILE:HD11	1:A:2283:VAL:HG21	2.01	0.42
1:A:3009:ASN:HB3	1:A:3088:ARG:NH2	2.34	0.42
1:A:3195:GLU:HA	1:A:3198:GLN:HB2	2.01	0.42
1:A:3513:PHE:CD2	1:A:3549:ARG:HG2	2.55	0.42
1:A:4095:MET:HA	1:A:4125:PHE:HB2	2.02	0.42
1:A:4508:HIS:HE1	1:A:4553:LEU:HD11	1.84	0.42
1:A:1949:CYS:HB3	1:A:2008:VAL:HA	2.00	0.42
1:A:3586:TYR:HB2	1:A:3649:LEU:HD12	2.02	0.42
1:A:3908:PHE:CD1	1:A:3991:LEU:HD23	2.55	0.42
1:A:2937:GLY:HA3	1:A:3094:PHE:HB3	2.00	0.42
1:A:1747:ALA:HB2	1:A:1807:LYS:HG2	2.02	0.42
1:A:3043:MET:HE3	1:A:3043:MET:HB3	1.96	0.42
1:A:3904:GLU:HA	1:A:3941:LEU:HD13	2.01	0.42
1:A:1972:SER:HA	1:A:1975:VAL:HG12	2.02	0.42
1:A:2548:TRP:CD2	1:A:2576:ARG:HG2	2.55	0.42
1:A:2978:THR:HG22	1:A:2981:ARG:HE	1.85	0.42
1:A:2618:VAL:HB	1:A:2661:LEU:HD23	2.02	0.41
1:A:1899:ARG:HD3	1:A:1986:SER:HA	2.02	0.41
1:A:2982:ARG:HA	1:A:2982:ARG:HD3	1.88	0.41
1:A:3205:LEU:O	1:A:3208:ILE:HG22	2.20	0.41
1:A:4166:VAL:HG23	1:A:4302:ARG:HD2	2.02	0.41
1:A:2154:ILE:HG13	1:A:2155:PRO:HD3	2.03	0.41
1:A:2925:ILE:HG21	1:A:2933:LEU:HB2	2.01	0.41
1:A:4577:LEU:HD22	1:A:4638:ARG:CZ	2.50	0.41
1:A:2311:TRP:HZ3	1:A:2343:PHE:HE2	1.67	0.41
1:A:2978:THR:HA	1:A:2981:ARG:HE	1.85	0.41
1:A:3561:ARG:HH21	1:A:3603:GLU:HG2	1.84	0.41
1:A:4040:PRO:HD3	1:A:4113:LEU:HD21	2.01	0.41
1:A:1733:ILE:HD13	1:A:1733:ILE:HA	1.90	0.41

*Continued on next page...*



*Continued from previous page...*

Atom-1	Atom-2	Interatomic distance (Å)	Clash overlap (Å)
1:A:2300:TRP:CD1	1:A:2340:ARG:HB2	2.55	0.41
1:A:2499:LEU:HD23	1:A:2499:LEU:HA	1.87	0.41
1:A:2680:ILE:HD12	1:A:2680:ILE:HA	1.83	0.41
1:A:3171:ILE:HD12	1:A:3171:ILE:HA	1.96	0.41
1:A:3993:ILE:HD13	1:A:3993:ILE:HA	1.95	0.41
1:A:4601:LYS:HB2	1:A:4604:VAL:HG23	2.01	0.41
1:A:1872:TYR:CZ	1:A:1874:GLY:HA2	2.56	0.41
1:A:1891:THR:HG21	1:A:2039:LEU:HD12	2.02	0.41
1:A:2561:LYS:HD2	1:A:2561:LYS:HA	1.74	0.41
1:A:3196:GLU:HB2	1:A:3199:MET:HE2	2.03	0.41
1:A:3209:LYS:HD3	1:A:3209:LYS:HA	1.76	0.41
1:A:3966:PRO:HD2	1:A:4000:ARG:HG3	2.01	0.41
1:A:1819:ARG:HG2	1:A:1823:ARG:NE	2.36	0.41
1:A:2178:LEU:HD12	1:A:2178:LEU:HA	1.92	0.41
1:A:2393:GLU:HG3	1:A:2396:ARG:HH11	1.85	0.41
1:A:2915:VAL:HG23	1:A:2946:LEU:HD11	2.03	0.41
1:A:2935:LEU:HD23	1:A:3092:ASN:HB3	2.03	0.41
1:A:3143:ILE:HD13	1:A:3143:ILE:HA	1.95	0.41
1:A:3927:LEU:HD21	1:A:3957:PHE:HE2	1.86	0.41
1:A:4003:ALA:O	1:A:4006:HIS:HB2	2.21	0.41
1:A:4023:GLN:HG2	1:A:4024:PRO:HD2	2.02	0.41
1:A:1881:GLN:HG3	1:A:1922:GLN:HE22	1.84	0.41
1:A:2838:VAL:HA	1:A:3093:TRP:CD1	2.56	0.41
1:A:1717:LEU:HD13	1:A:1749:LEU:HD22	2.01	0.41
1:A:2234:TRP:HE1	1:A:2342:MET:HE3	1.85	0.41
1:A:3570:ASP:OD1	1:A:3573:CYS:HB2	2.21	0.41
1:A:3873:ARG:HB2	1:A:4143:ARG:HH12	1.86	0.41
1:A:3208:ILE:HD12	1:A:3208:ILE:HA	1.91	0.41
1:A:3873:ARG:HA	1:A:3873:ARG:HD3	1.84	0.41
1:A:4536:LEU:HD23	1:A:4536:LEU:HA	1.90	0.41
1:A:2422:ILE:HD13	1:A:2422:ILE:HA	1.92	0.40
1:A:3646:ASN:O	1:A:3650:ASN:HB2	2.21	0.40
1:A:2993:ILE:HD13	1:A:3065:VAL:HG23	2.02	0.40
1:A:3713:LEU:HA	1:A:3716:VAL:HG12	2.03	0.40
1:A:4154:LYS:HE2	1:A:4154:LYS:HB2	1.89	0.40
1:A:4189:ILE:O	1:A:4193:ARG:HB2	2.21	0.40
1:A:4405:ILE:HD12	1:A:4405:ILE:HA	1.91	0.40
1:A:1899:ARG:HB2	1:A:1986:SER:HB3	2.03	0.40
1:A:3220:ARG:HA	1:A:3220:ARG:HD2	1.91	0.40
1:A:3811:ILE:HD12	1:A:3887:LEU:HD22	2.02	0.40
1:A:4004:MET:HE2	1:A:4004:MET:HB3	1.62	0.40

*Continued on next page...*



Continued from previous page...

Atom-1	Atom-2	Interatomic distance (Å)	Clash overlap (Å)
1:A:1925:ARG:HD3	1:A:1925:ARG:HA	1.81	0.40
1:A:2580:LEU:HD23	1:A:2580:LEU:HA	1.85	0.40
1:A:2896:ARG:HD3	1:A:2949:PHE:HZ	1.85	0.40
1:A:2090:LEU:HD12	1:A:2093:LEU:HB3	2.03	0.40
1:A:2510:MET:HA	1:A:2513:GLU:HG2	2.02	0.40

There are no symmetry-related clashes.

## 5.3 Torsion angles [i](#)

### 5.3.1 Protein backbone [i](#)

In the following table, the Percentiles column shows the percent Ramachandran outliers of the chain as a percentile score with respect to all PDB entries followed by that with respect to all EM entries.

The Analysed column shows the number of residues for which the backbone conformation was analysed, and the total number of residues.

Mol	Chain	Analysed	Favoured	Allowed	Outliers	Percentiles	
1	A	2745/4843 (57%)	2614 (95%)	131 (5%)	0	100	100

There are no Ramachandran outliers to report.

### 5.3.2 Protein sidechains [i](#)

In the following table, the Percentiles column shows the percent sidechain outliers of the chain as a percentile score with respect to all PDB entries followed by that with respect to all EM entries.

The Analysed column shows the number of residues for which the sidechain conformation was analysed, and the total number of residues.

Mol	Chain	Analysed	Rotameric	Outliers	Percentiles	
1	A	2440/4279 (57%)	2439 (100%)	1 (0%)	100	100

All (1) residues with a non-rotameric sidechain are listed below:

Mol	Chain	Res	Type
1	A	3038	GLN

Sometimes sidechains can be flipped to improve hydrogen bonding and reduce clashes. All (27) such sidechains are listed below:

Mol	Chain	Res	Type
1	A	1643	ASN
1	A	1670	ASN
1	A	1784	ASN
1	A	1876	GLN
1	A	1922	GLN
1	A	2252	HIS
1	A	2376	ASN
1	A	2439	HIS
1	A	2442	GLN
1	A	2482	GLN
1	A	2667	ASN
1	A	2932	HIS
1	A	2960	GLN
1	A	3047	HIS
1	A	3057	GLN
1	A	3200	HIS
1	A	3631	ASN
1	A	3650	ASN
1	A	3735	GLN
1	A	3878	GLN
1	A	3988	HIS
1	A	4231	GLN
1	A	4325	ASN
1	A	4335	GLN
1	A	4381	HIS
1	A	4386	ASN
1	A	4490	GLN

### 5.3.3 RNA ⓘ

There are no RNA molecules in this entry.

## 5.4 Non-standard residues in protein, DNA, RNA chains ⓘ

There are no non-standard protein/DNA/RNA residues in this entry.

## 5.5 Carbohydrates ⓘ

There are no oligosaccharides in this entry.

## 5.6 Ligand geometry

4 ligands are modelled in this entry.

In the following table, the Counts columns list the number of bonds (or angles) for which Mogul statistics could be retrieved, the number of bonds (or angles) that are observed in the model and the number of bonds (or angles) that are defined in the Chemical Component Dictionary. The Link column lists molecule types, if any, to which the group is linked. The Z score for a bond length (or angle) is the number of standard deviations the observed value is removed from the expected value. A bond length (or angle) with  $|Z| > 2$  is considered an outlier worth inspection. RMSZ is the root-mean-square of all Z scores of the bond lengths (or angles).

Mol	Type	Chain	Res	Link	Bond lengths			Bond angles		
					Counts	RMSZ	# Z  > 2	Counts	RMSZ	# Z  > 2
2	ADP	A	4704	-	24,29,29	0.84	0	29,45,45	1.23	2 (6%)
2	ADP	A	4701	-	24,29,29	0.90	0	29,45,45	1.20	2 (6%)
3	ATP	A	4703	-	28,33,33	0.63	0	34,52,52	0.82	2 (5%)
3	ATP	A	4702	-	28,33,33	0.73	0	34,52,52	0.69	1 (2%)

In the following table, the Chirals column lists the number of chiral outliers, the number of chiral centers analysed, the number of these observed in the model and the number defined in the Chemical Component Dictionary. Similar counts are reported in the Torsion and Rings columns. '-' means no outliers of that kind were identified.

Mol	Type	Chain	Res	Link	Chirals	Torsions	Rings
2	ADP	A	4704	-	-	4/12/32/32	0/3/3/3
2	ADP	A	4701	-	-	5/12/32/32	0/3/3/3
3	ATP	A	4703	-	-	5/18/38/38	0/3/3/3
3	ATP	A	4702	-	-	5/18/38/38	0/3/3/3

There are no bond length outliers.

All (7) bond angle outliers are listed below:

Mol	Chain	Res	Type	Atoms	Z	Observed(°)	Ideal(°)
2	A	4704	ADP	N3-C2-N1	-3.65	123.72	128.67
2	A	4701	ADP	N3-C2-N1	-3.55	123.86	128.67
3	A	4703	ATP	C1'-N9-C4	2.77	131.50	126.64
2	A	4701	ADP	C4-C5-N7	-2.50	106.70	109.34
2	A	4704	ADP	C4-C5-N7	-2.41	106.79	109.34
3	A	4702	ATP	C5-C6-N6	2.38	123.93	120.31
3	A	4703	ATP	C5-C6-N6	2.33	123.86	120.31

There are no chirality outliers.

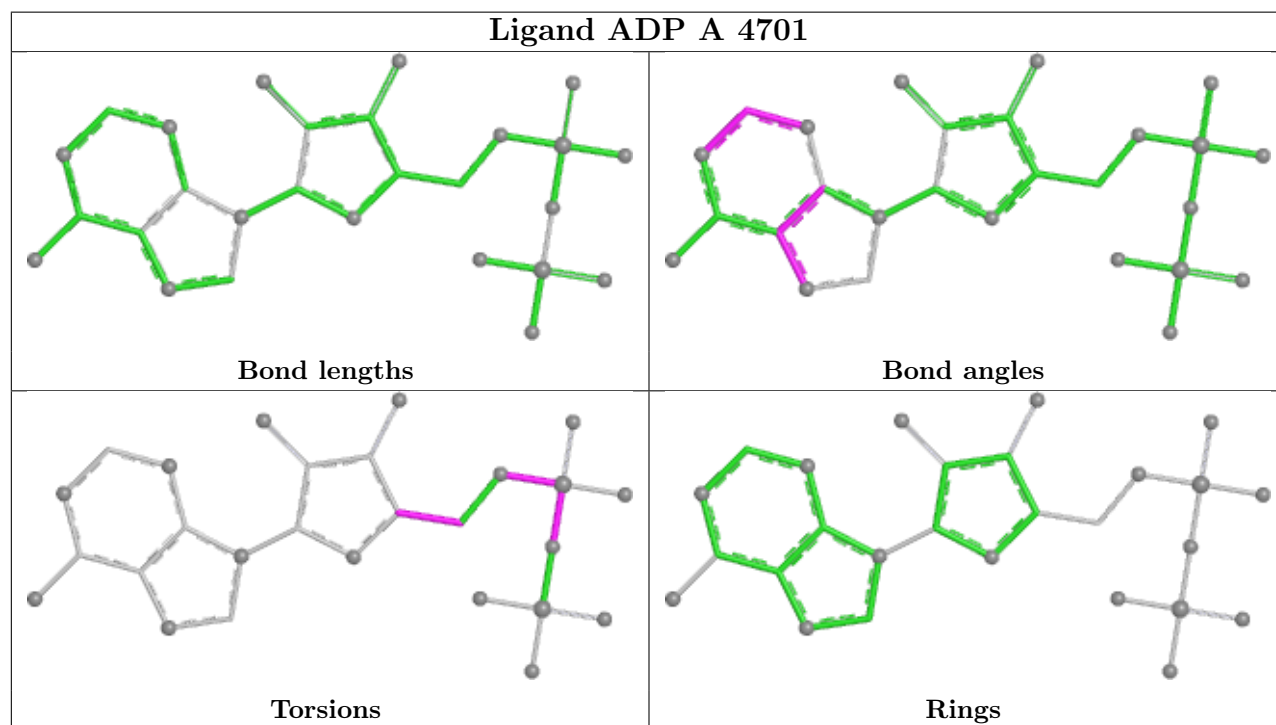
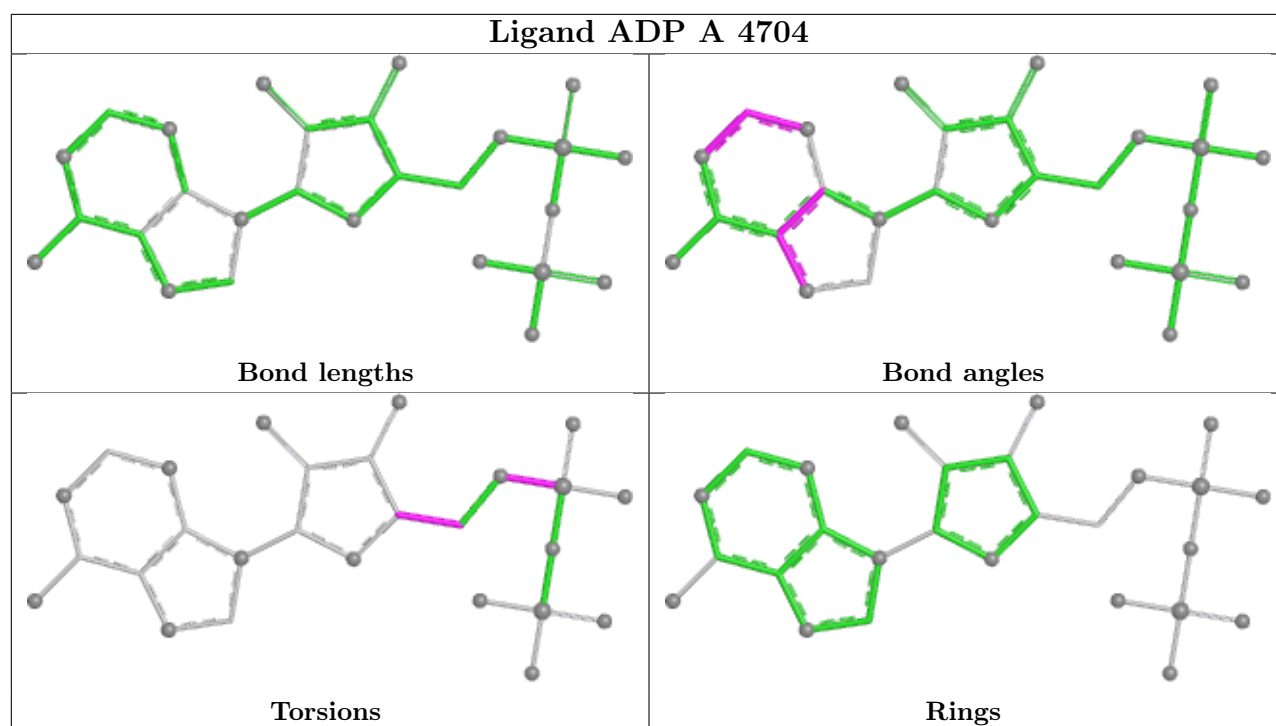
All (19) torsion outliers are listed below:

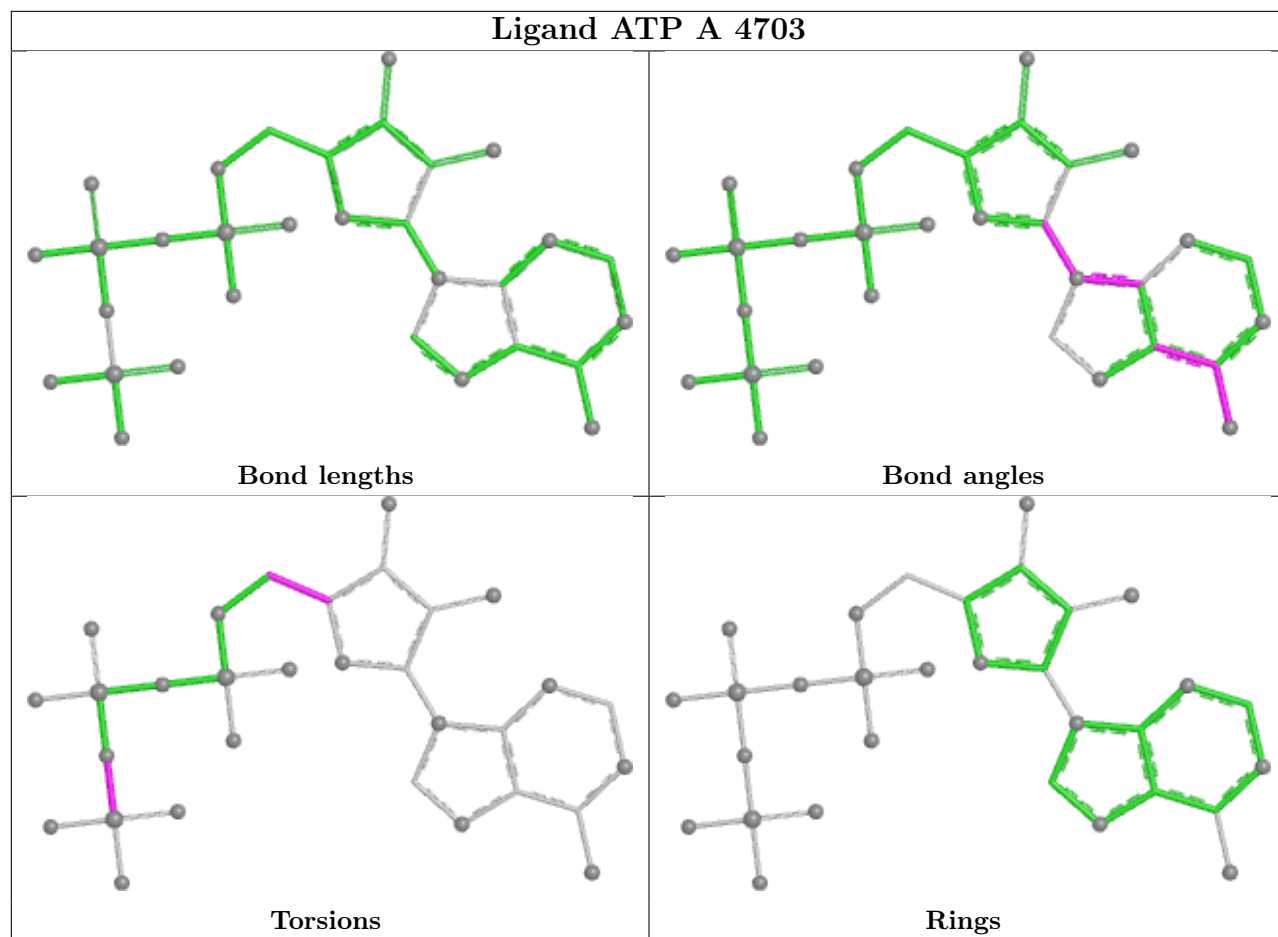
Mol	Chain	Res	Type	Atoms
2	A	4701	ADP	PB-O3A-PA-O5'
2	A	4701	ADP	C5'-O5'-PA-O2A
2	A	4701	ADP	C5'-O5'-PA-O3A
2	A	4704	ADP	C5'-O5'-PA-O2A
2	A	4704	ADP	C5'-O5'-PA-O3A
3	A	4702	ATP	O4'-C4'-C5'-O5'
3	A	4703	ATP	PB-O3B-PG-O3G
2	A	4704	ADP	C3'-C4'-C5'-O5'
3	A	4702	ATP	C3'-C4'-C5'-O5'
2	A	4704	ADP	O4'-C4'-C5'-O5'
2	A	4701	ADP	C5'-O5'-PA-O1A
3	A	4703	ATP	O4'-C4'-C5'-O5'
3	A	4703	ATP	C3'-C4'-C5'-O5'
3	A	4703	ATP	PB-O3B-PG-O1G
3	A	4702	ATP	PB-O3B-PG-O2G
3	A	4703	ATP	PB-O3B-PG-O2G
3	A	4702	ATP	PG-O3B-PB-O2B
3	A	4702	ATP	PA-O3A-PB-O2B
2	A	4701	ADP	O4'-C4'-C5'-O5'

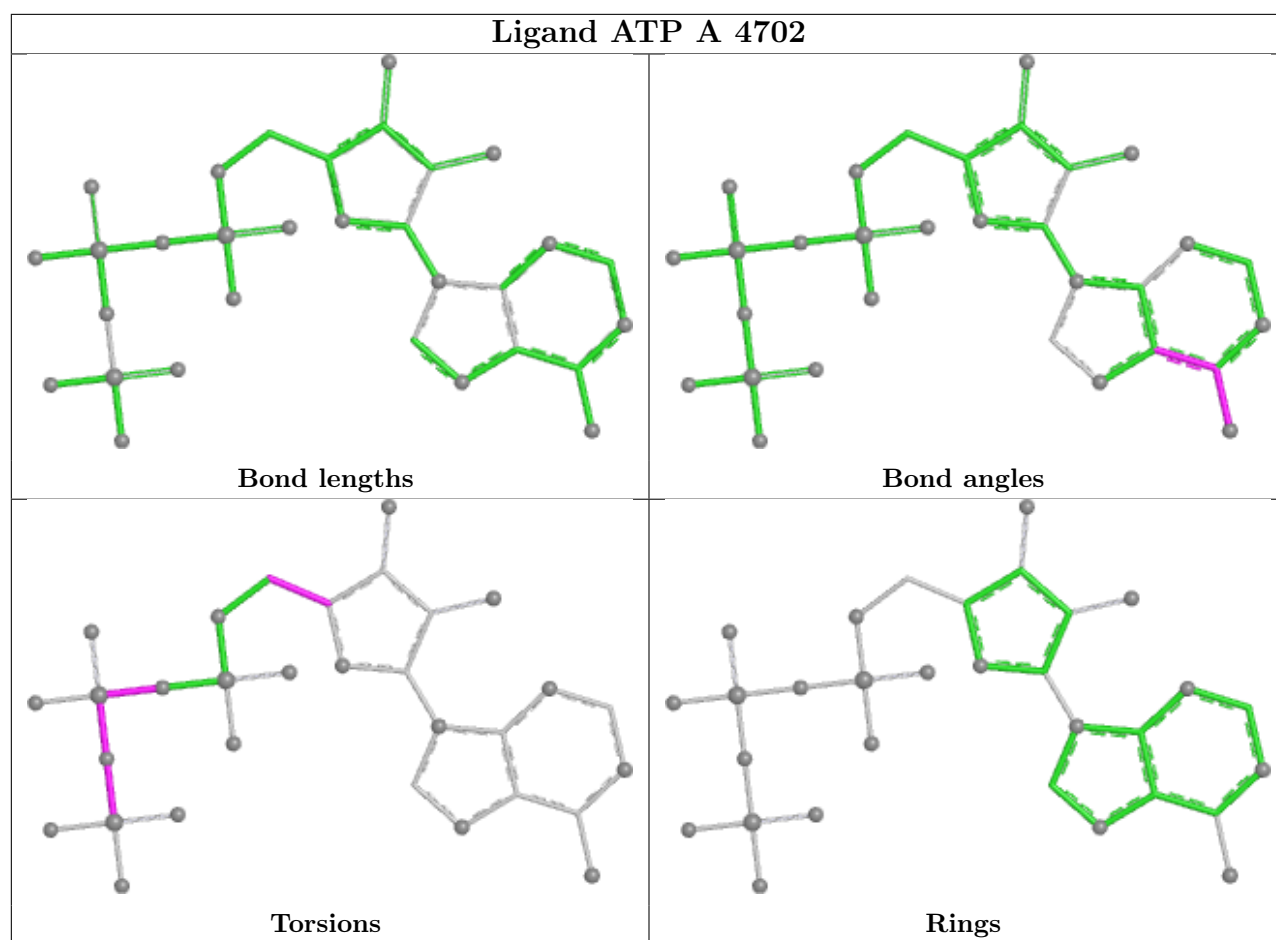
There are no ring outliers.

No monomer is involved in short contacts.

The following is a two-dimensional graphical depiction of Mogul quality analysis of bond lengths, bond angles, torsion angles, and ring geometry for all instances of the Ligand of Interest. In addition, ligands with molecular weight > 250 and outliers as shown on the validation Tables will also be included. For torsion angles, if less than 5% of the Mogul distribution of torsion angles is within 10 degrees of the torsion angle in question, then that torsion angle is considered an outlier. Any bond that is central to one or more torsion angles identified as an outlier by Mogul will be highlighted in the graph. For rings, the root-mean-square deviation (RMSD) between the ring in question and similar rings identified by Mogul is calculated over all ring torsion angles. If the average RMSD is greater than 60 degrees and the minimal RMSD between the ring in question and any Mogul-identified rings is also greater than 60 degrees, then that ring is considered an outlier. The outliers are highlighted in purple. The color gray indicates Mogul did not find sufficient equivalents in the CSD to analyse the geometry.







## 5.7 Other polymers [i](#)

There are no such residues in this entry.

## 5.8 Polymer linkage issues [i](#)

There are no chain breaks in this entry.

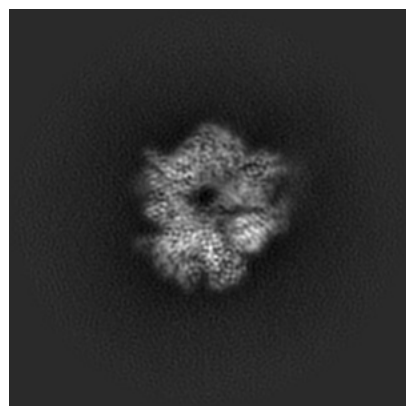
## 6 Map visualisation [i](#)

This section contains visualisations of the EMDB entry EMD-47377. These allow visual inspection of the internal detail of the map and identification of artifacts.

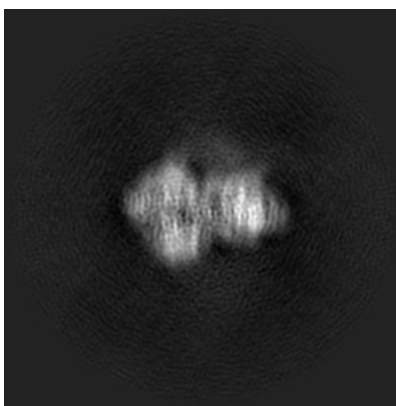
Images derived from a raw map, generated by summing the deposited half-maps, are presented below the corresponding image components of the primary map to allow further visual inspection and comparison with those of the primary map.

### 6.1 Orthogonal projections [i](#)

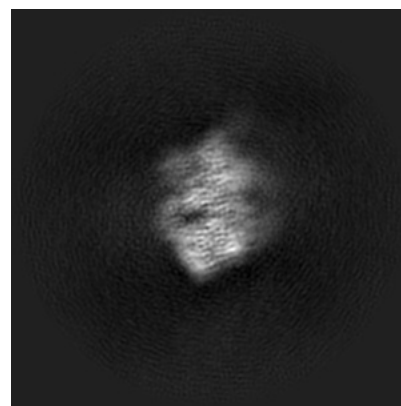
#### 6.1.1 Primary map



X

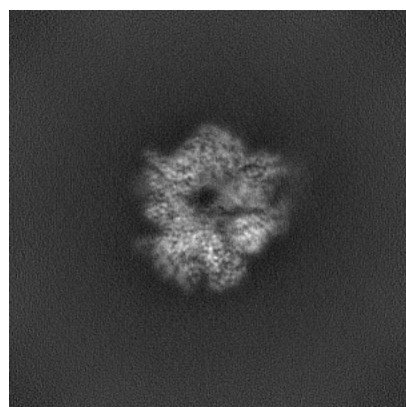


Y

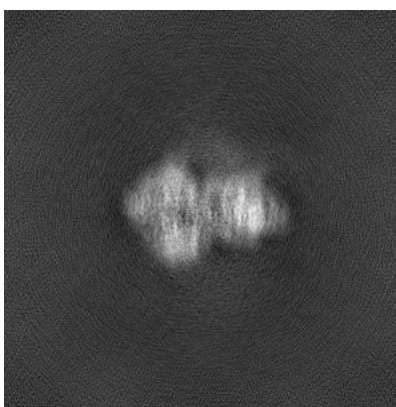


Z

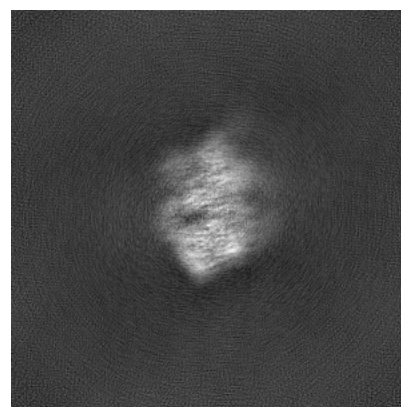
#### 6.1.2 Raw map



X



Y



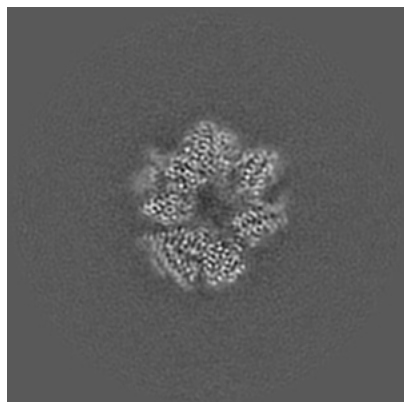
Z

The images above show the map projected in three orthogonal directions.

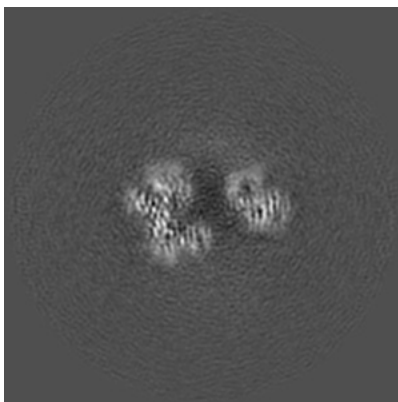


## 6.2 Central slices [i](#)

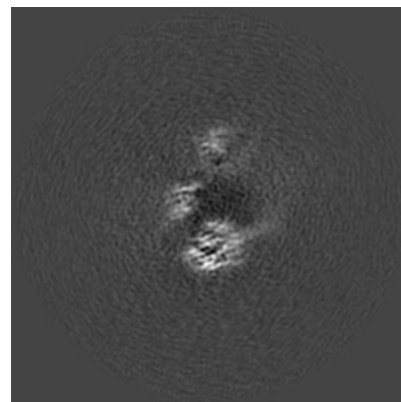
### 6.2.1 Primary map



X Index: 176

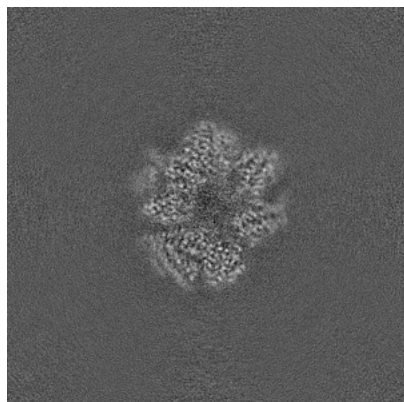


Y Index: 176

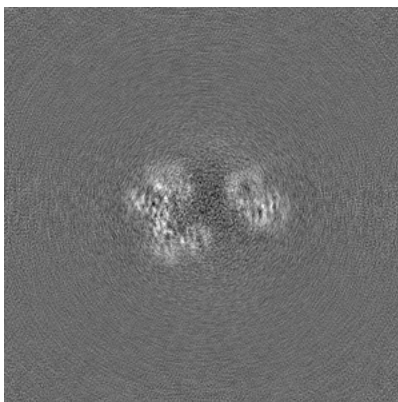


Z Index: 176

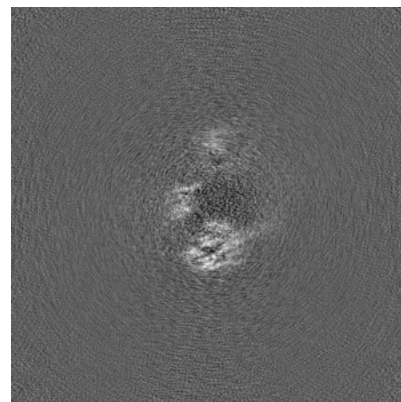
### 6.2.2 Raw map



X Index: 176



Y Index: 176

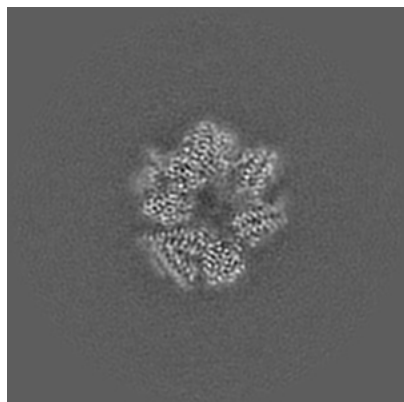


Z Index: 176

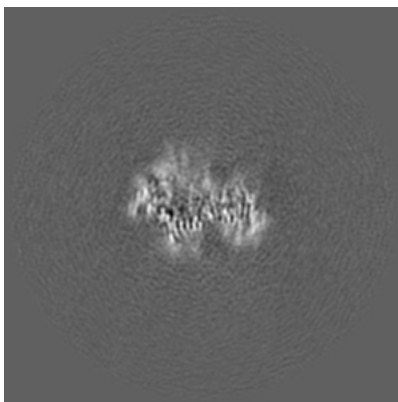
The images above show central slices of the map in three orthogonal directions.

## 6.3 Largest variance slices [i](#)

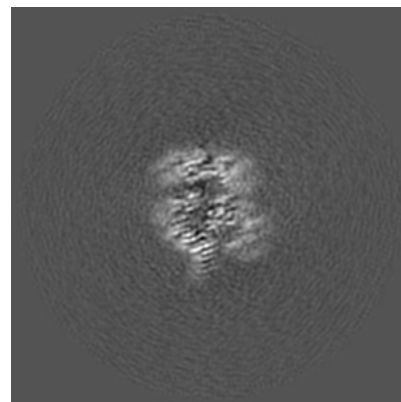
### 6.3.1 Primary map



X Index: 175

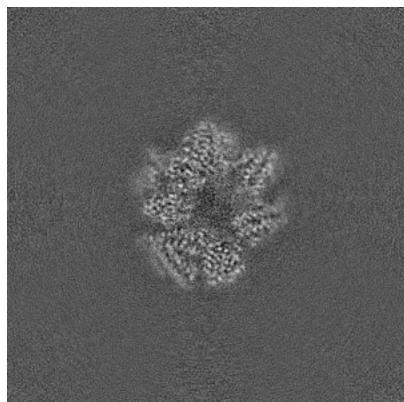


Y Index: 150

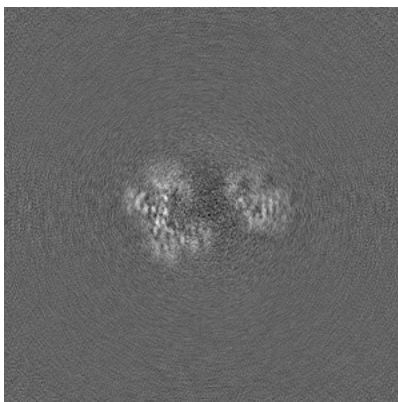


Z Index: 151

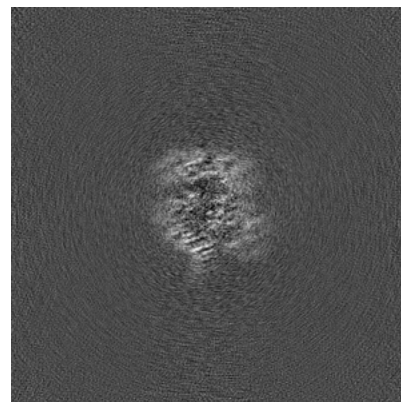
### 6.3.2 Raw map



X Index: 175



Y Index: 177

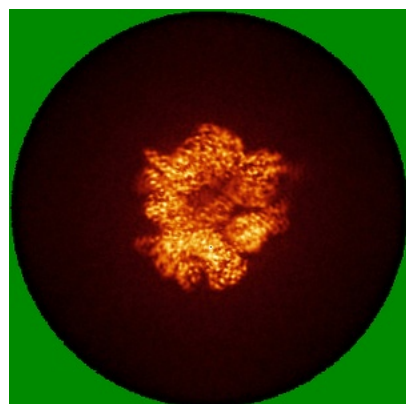


Z Index: 151

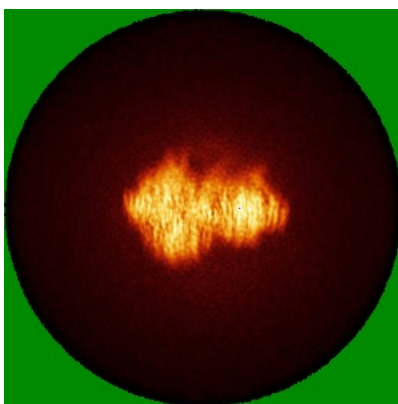
The images above show the largest variance slices of the map in three orthogonal directions.

## 6.4 Orthogonal standard-deviation projections (False-color) [i](#)

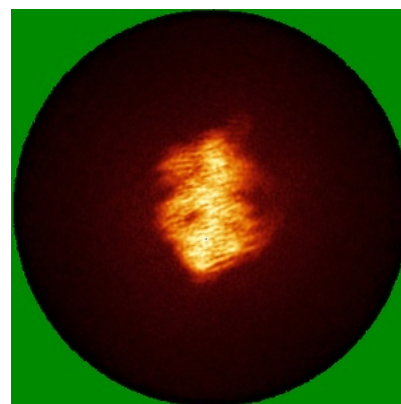
### 6.4.1 Primary map



X

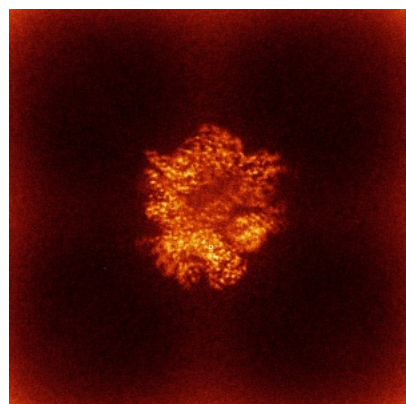


Y

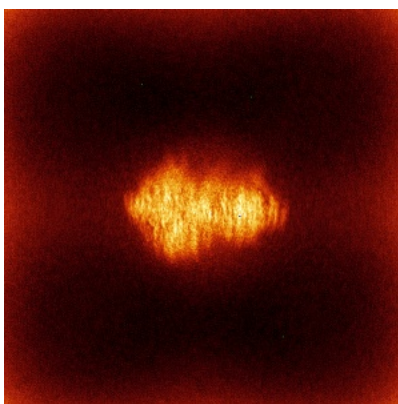


Z

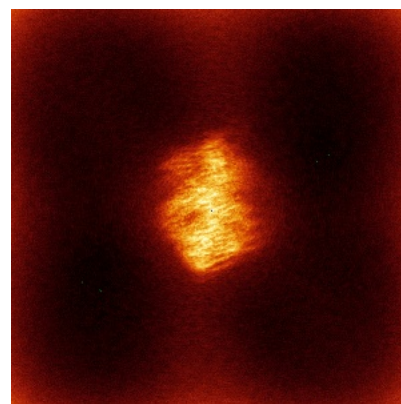
### 6.4.2 Raw map



X



Y

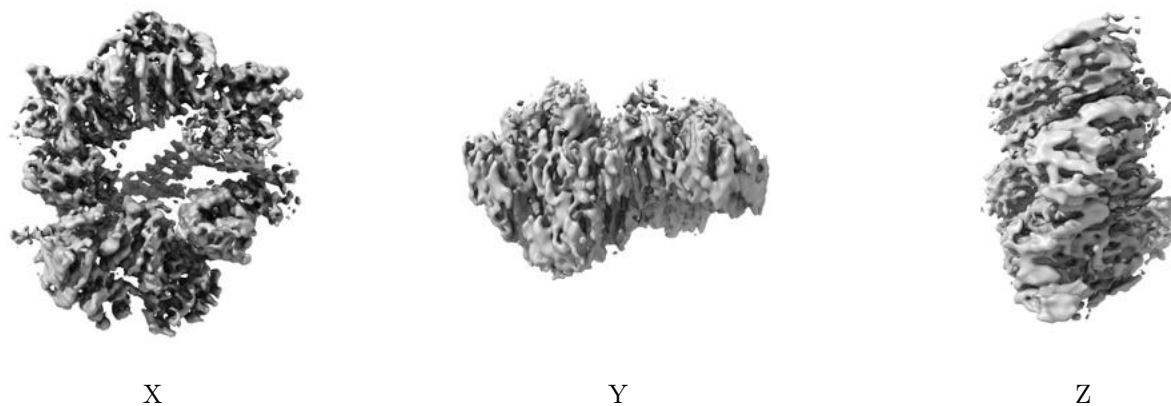


Z

The images above show the map standard deviation projections with false color in three orthogonal directions. Minimum values are shown in green, max in blue, and dark to light orange shades represent small to large values respectively.

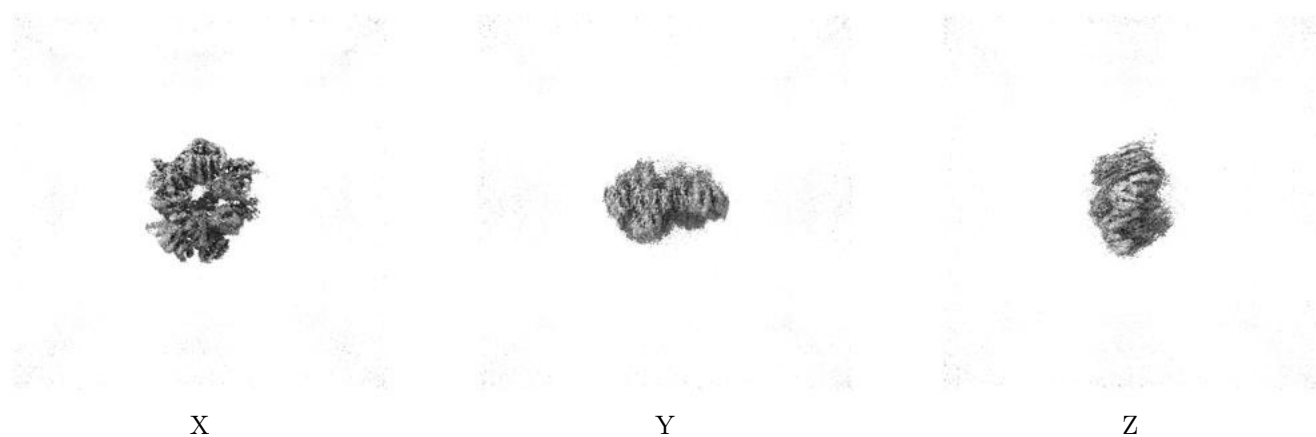
## 6.5 Orthogonal surface views [i](#)

### 6.5.1 Primary map



The images above show the 3D surface view of the map at the recommended contour level 0.1. These images, in conjunction with the slice images, may facilitate assessment of whether an appropriate contour level has been provided.

### 6.5.2 Raw map



These images show the 3D surface of the raw map. The raw map's contour level was selected so that its surface encloses the same volume as the primary map does at its recommended contour level.

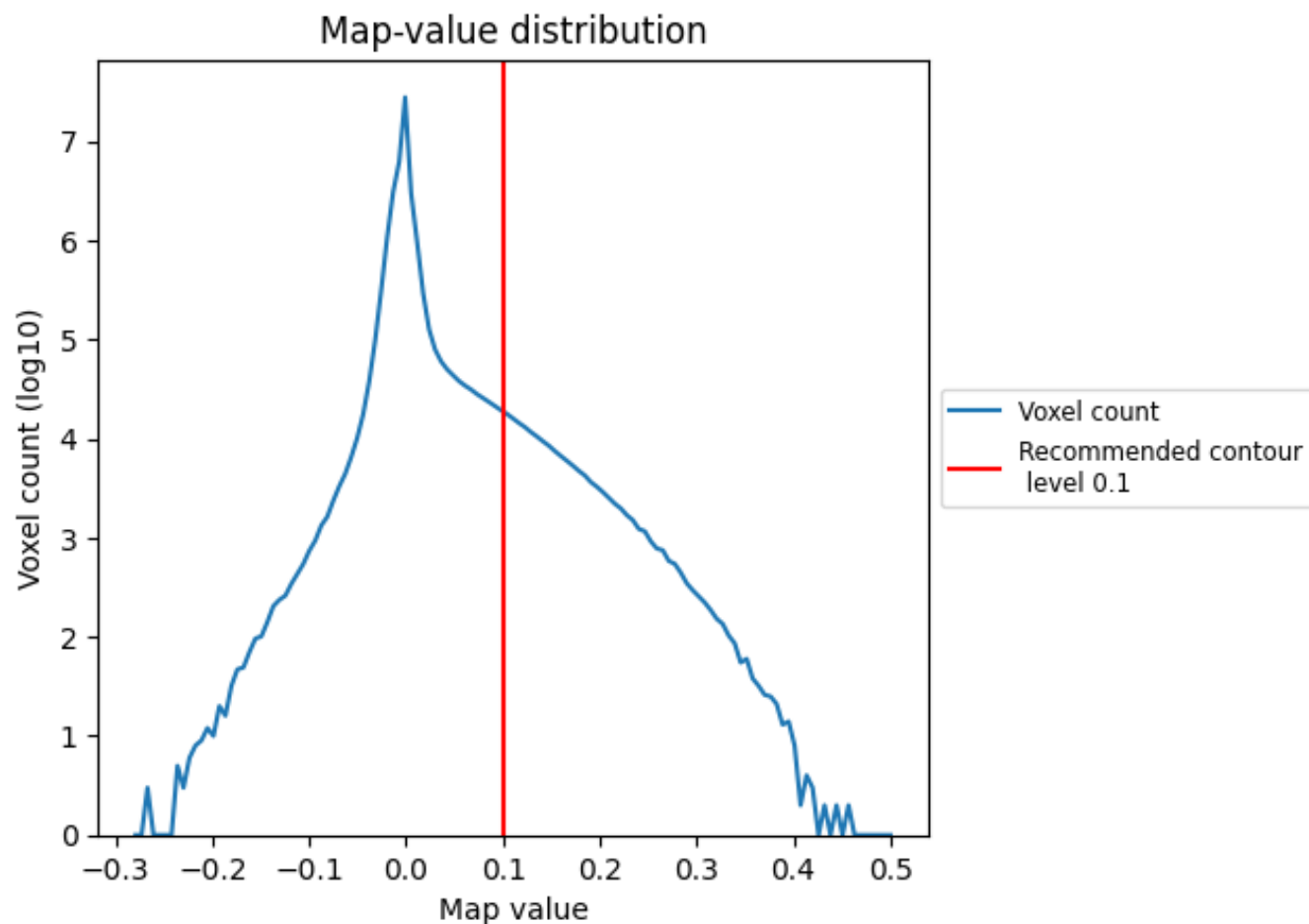
## 6.6 Mask visualisation [i](#)

This section was not generated. No masks/segmentation were deposited.

## 7 Map analysis [i](#)

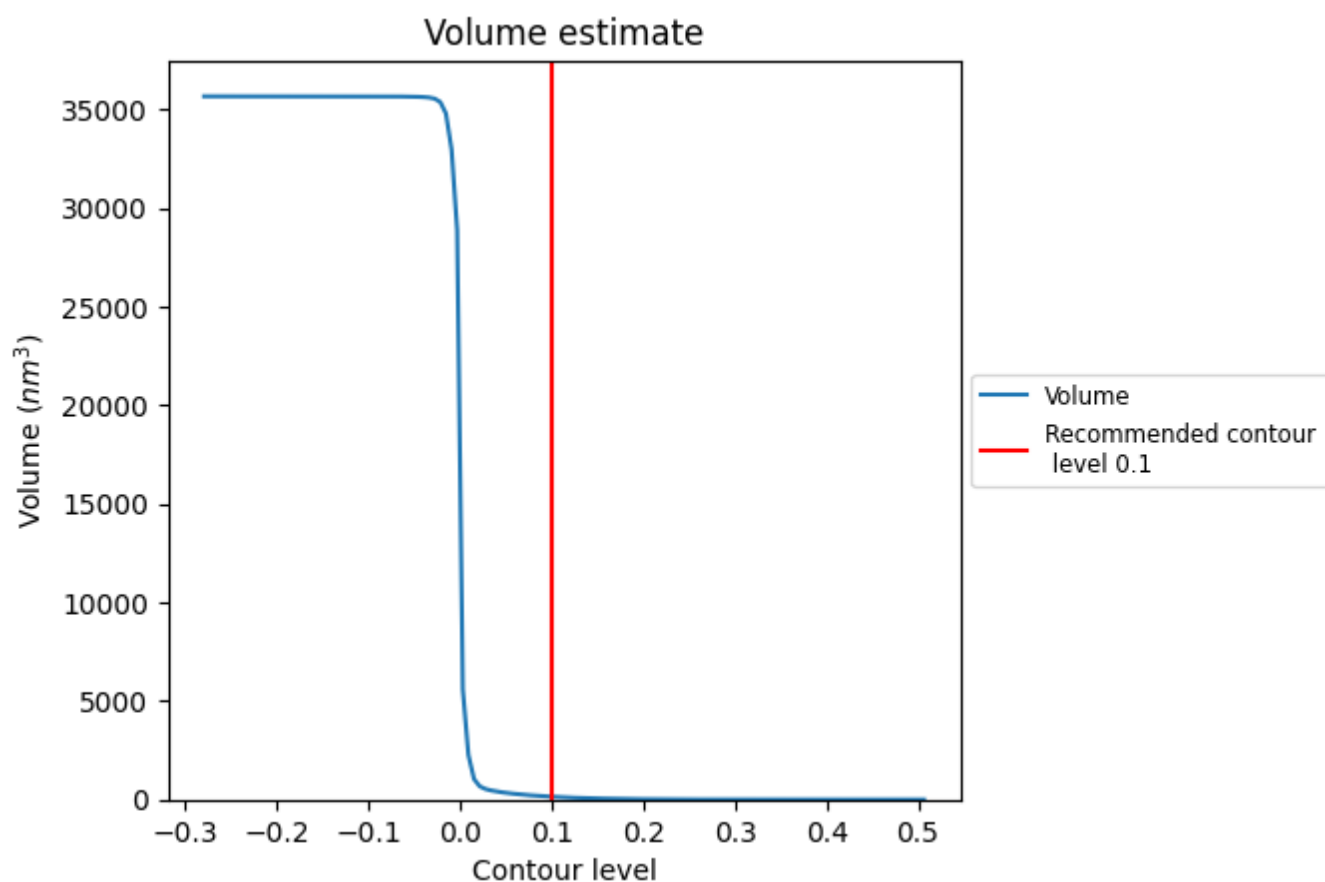
This section contains the results of statistical analysis of the map.

### 7.1 Map-value distribution [i](#)



The map-value distribution is plotted in 128 intervals along the x-axis. The y-axis is logarithmic. A spike in this graph at zero usually indicates that the volume has been masked.

## 7.2 Volume estimate [i](#)

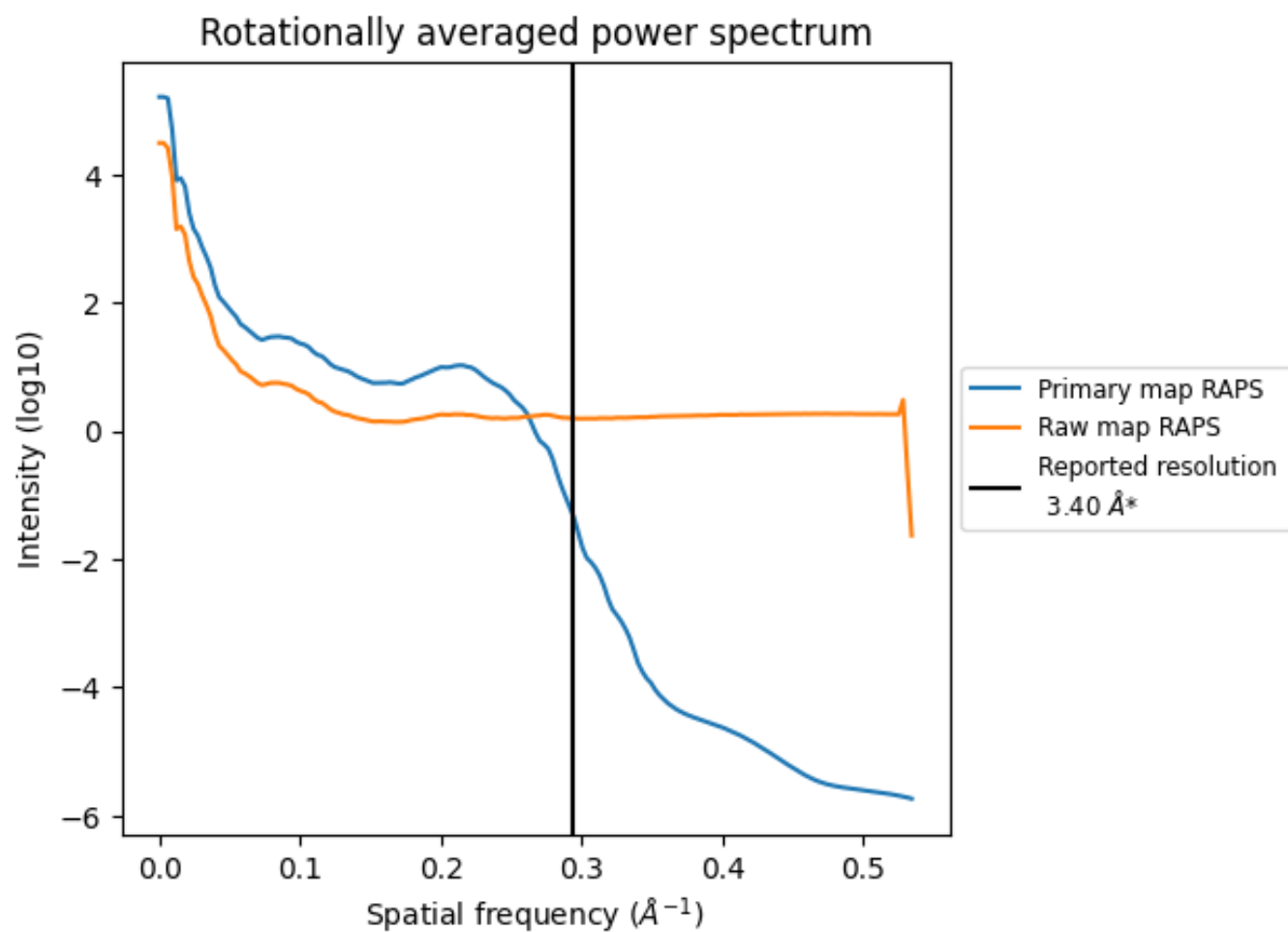


The volume at the recommended contour level is 145 nm<sup>3</sup>; this corresponds to an approximate mass of 131 kDa.

The volume estimate graph shows how the enclosed volume varies with the contour level. The recommended contour level is shown as a vertical line and the intersection between the line and the curve gives the volume of the enclosed surface at the given level.



### 7.3 Rotationally averaged power spectrum ⓘ

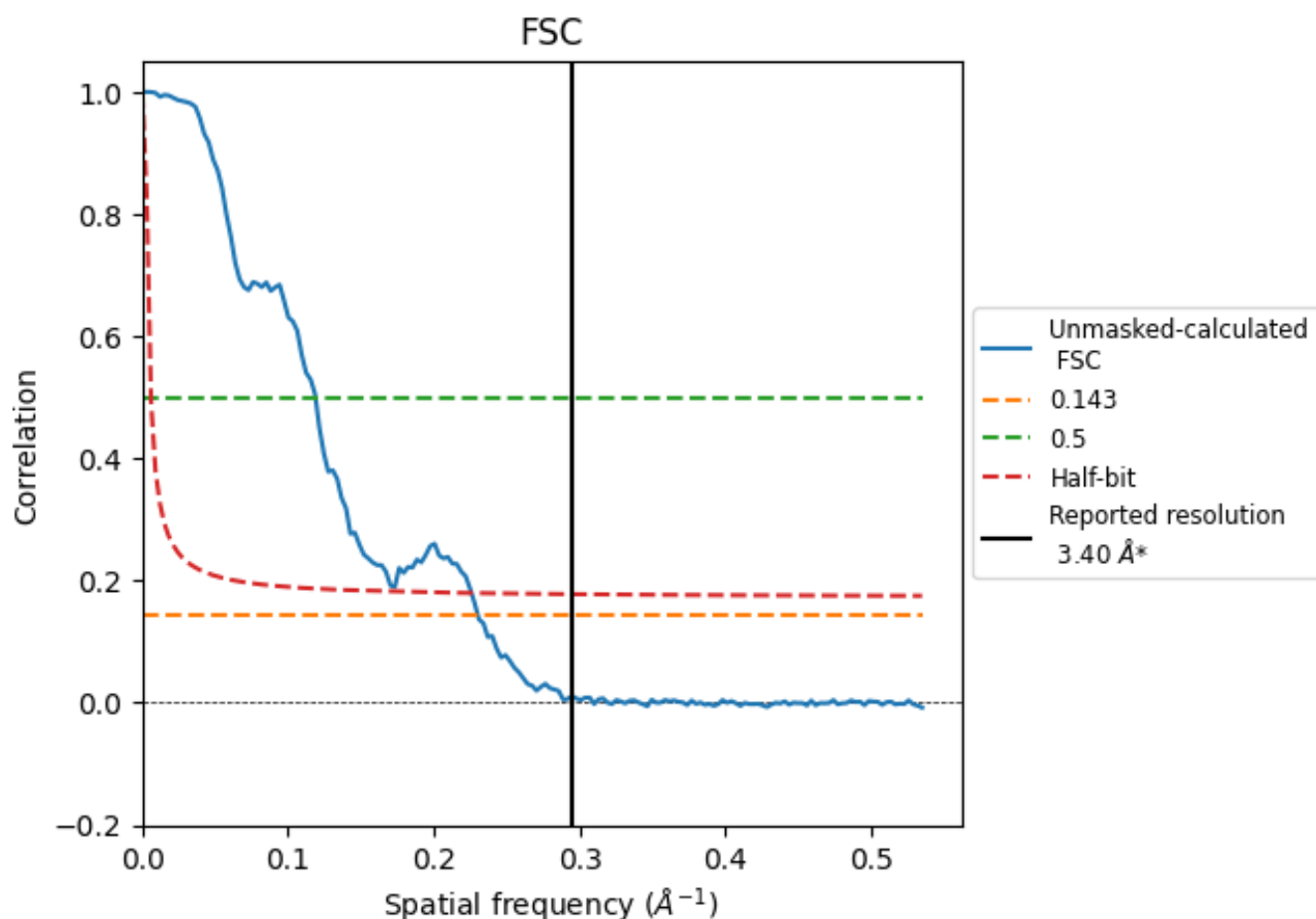


\*Reported resolution corresponds to spatial frequency of 0.294 Å<sup>-1</sup>

## 8 Fourier-Shell correlation [i](#)

Fourier-Shell Correlation (FSC) is the most commonly used method to estimate the resolution of single-particle and subtomogram-averaged maps. The shape of the curve depends on the imposed symmetry, mask and whether or not the two 3D reconstructions used were processed from a common reference. The reported resolution is shown as a black line. A curve is displayed for the half-bit criterion in addition to lines showing the 0.143 gold standard cut-off and 0.5 cut-off.

### 8.1 FSC [i](#)



\*Reported resolution corresponds to spatial frequency of 0.294  $\text{\AA}^{-1}$



## 8.2 Resolution estimates [i](#)

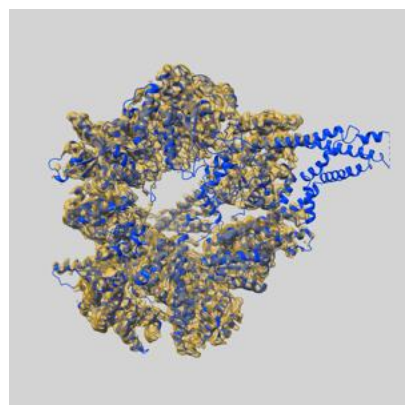
Resolution estimate (Å)	Estimation criterion (FSC cut-off)		
	0.143	0.5	Half-bit
Reported by author	3.40	-	-
Author-provided FSC curve	-	-	-
Unmasked-calculated*	4.34	8.42	4.43

\*Resolution estimate based on FSC curve calculated by comparison of deposited half-maps. The value from deposited half-maps intersecting FSC 0.143 CUT-OFF 4.34 differs from the reported value 3.4 by more than 10 %

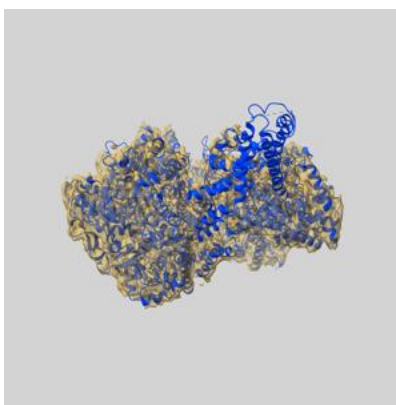
## 9 Map-model fit [i](#)

This section contains information regarding the fit between EMDB map EMD-47377 and PDB model 9E0Y. Per-residue inclusion information can be found in [section 3](#) on [page 10](#).

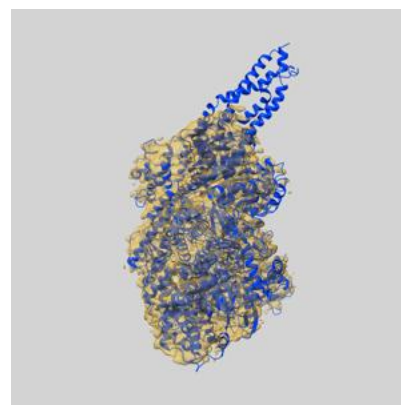
### 9.1 Map-model overlay [i](#)



X



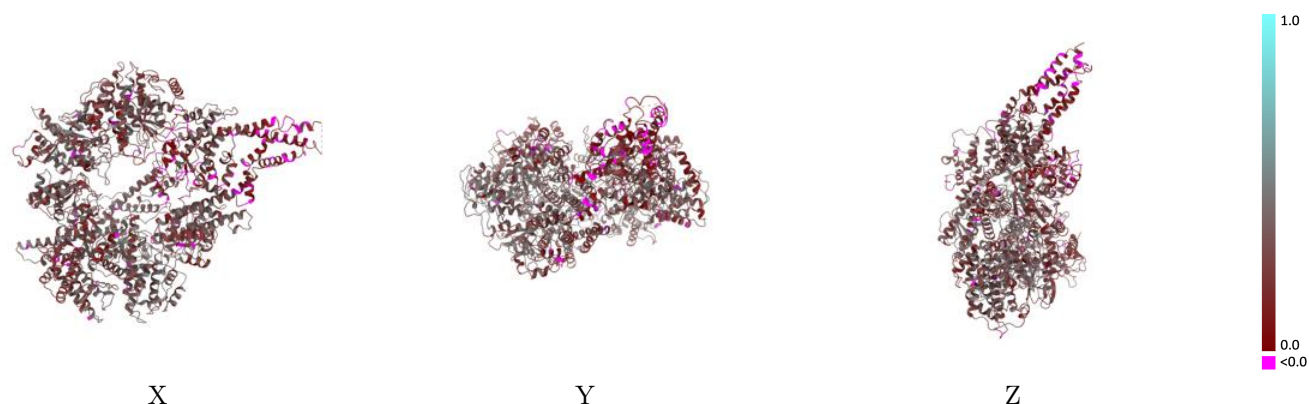
Y



Z

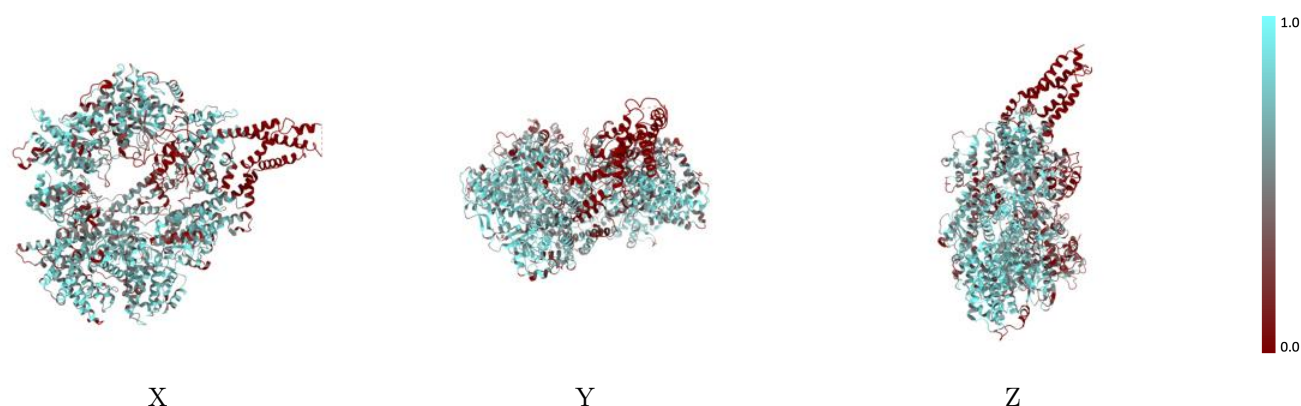
The images above show the 3D surface view of the map at the recommended contour level 0.1 at 50% transparency in yellow overlaid with a ribbon representation of the model coloured in blue. These images allow for the visual assessment of the quality of fit between the atomic model and the map.

## 9.2 Q-score mapped to coordinate model [i](#)



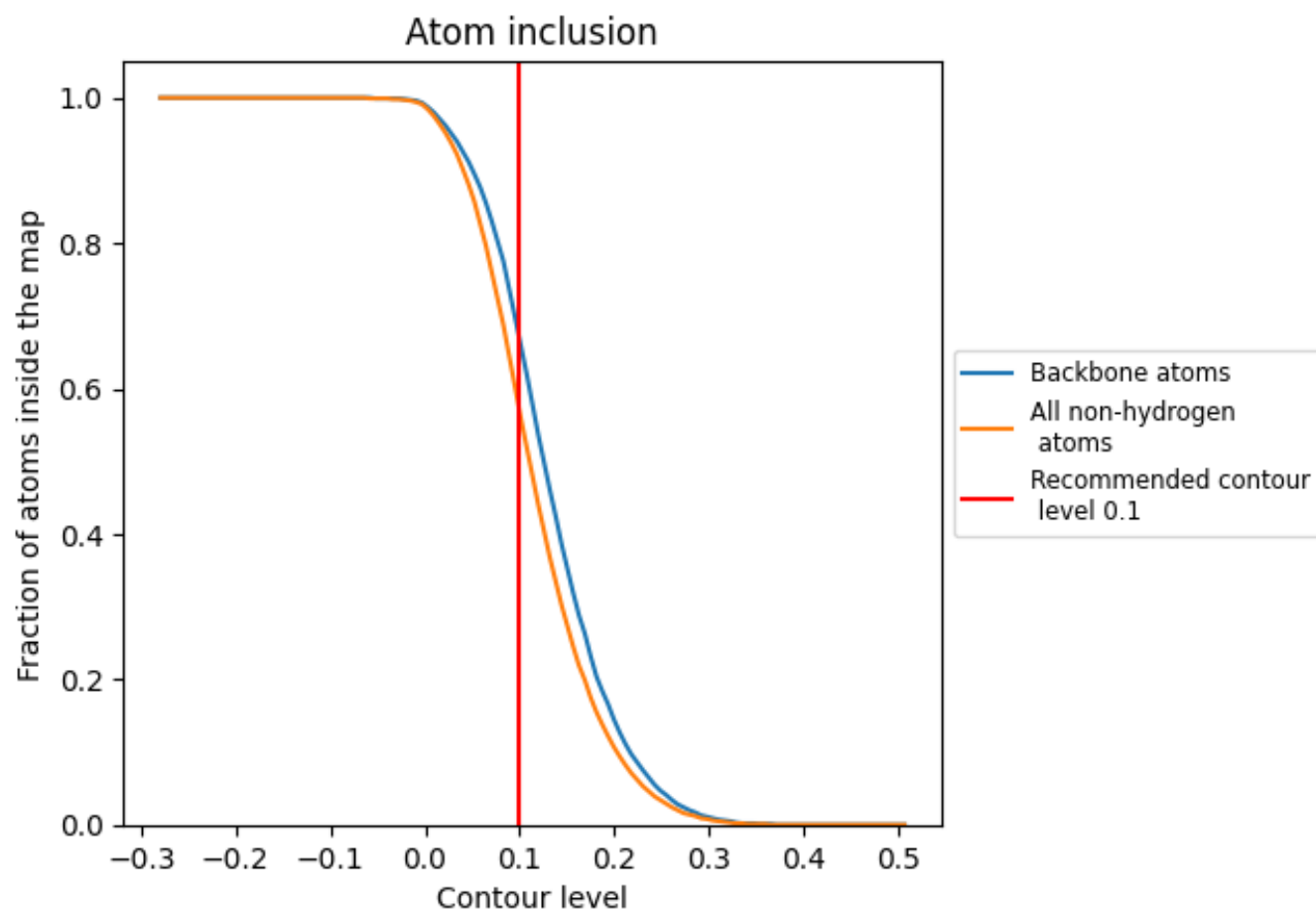
The images above show the model with each residue coloured according to its Q-score. This shows their resolvability in the map with higher Q-score values reflecting better resolvability. Please note: Q-score is calculating the resolvability of atoms, and thus high values are only expected at resolutions at which atoms can be resolved. Low Q-score values may therefore be expected for many entries.

## 9.3 Atom inclusion mapped to coordinate model [i](#)



The images above show the model with each residue coloured according to its atom inclusion. This shows to what extent they are inside the map at the recommended contour level (0.1).

## 9.4 Atom inclusion [i](#)



At the recommended contour level, 66% of all backbone atoms, 57% of all non-hydrogen atoms, are inside the map.

9.5 Map-model fit summary ⓘ

The table lists the average atom inclusion at the recommended contour level (0.1) and Q-score for the entire model and for each chain.

Chain	Atom inclusion	Q-score
All	<div></div> 0.5670	<div></div> 0.2960
A	<div></div> 0.5670	<div></div> 0.2960

