



Full wwPDB EM Validation Report ⓘ

Oct 27, 2024 – 03:16 PM JST

PDB ID : 7E21
EMDB ID : EMD-30949
Title : Cryo EM structure of a Na⁺-bound Na⁺,K⁺-ATPase in the E1 state with ATP-gamma-S
Authors : Guo, Y.Y.; Zhang, Y.Y.; Yan, R.H.; Huang, B.D.; Ye, F.F.; Wu, L.S.; Chi, X.M.; Zhou, Q.
Deposited on : 2021-02-04
Resolution : 2.90 Å(reported)

This is a Full wwPDB EM Validation Report for a publicly released PDB entry.

We welcome your comments at validation@mail.wwpdb.org

A user guide is available at

<https://www.wwpdb.org/validation/2017/EMValidationReportHelp>
with specific help available everywhere you see the ⓘ symbol.

The types of validation reports are described at

<http://www.wwpdb.org/validation/2017/FAQs#types>.

The following versions of software and data (see [references ⓘ](#)) were used in the production of this report:

EMDB validation analysis : 0.0.1.dev113
Mogul : 1.8.5 (274361), CSD as541be (2020)
MolProbity : 4.02b-467
buster-report : 1.1.7 (2018)
Percentile statistics : 20231227.v01 (using entries in the PDB archive December 27th 2023)
MapQ : 1.9.13
Ideal geometry (proteins) : Engh & Huber (2001)
Ideal geometry (DNA, RNA) : Parkinson et al. (1996)
Validation Pipeline (wwPDB-VP) : 2.39

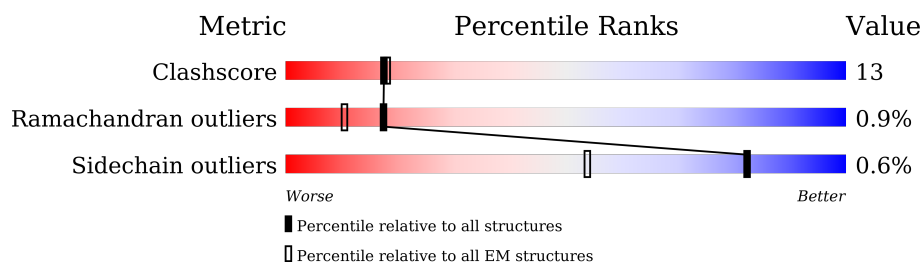
1 Overall quality at a glance

The following experimental techniques were used to determine the structure:

ELECTRON MICROSCOPY

The reported resolution of this entry is 2.90 Å.

Percentile scores (ranging between 0-100) for global validation metrics of the entry are shown in the following graphic. The table shows the number of entries on which the scores are based.



Metric	Whole archive (#Entries)	EM structures (#Entries)
Clashscore	210492	15764
Ramachandran outliers	207382	16835
Sidechain outliers	206894	16415

The table below summarises the geometric issues observed across the polymeric chains and their fit to the map. The red, orange, yellow and green segments of the bar indicate the fraction of residues that contain outliers for ≥ 3 , 2, 1 and 0 types of geometric quality criteria respectively. A grey segment represents the fraction of residues that are not modelled. The numeric value for each fraction is indicated below the corresponding segment, with a dot representing fractions $\leq 5\%$. The upper red bar (where present) indicates the fraction of residues that have poor fit to the EM map (all-atom inclusion $< 40\%$). The numeric value is given above the bar.

Mol	Chain	Length	Quality of chain
1	A	1023	<div> <div>46%</div> <div>81%</div> <div>13%</div> <div>5%</div> </div>
2	B	303	<div> <div>24%</div> <div>89%</div> <div>8%</div> <div>.</div> </div>
3	C	66	<div> <div>45%</div> <div>44%</div> <div>5%</div> <div>52%</div> </div>
4	D	2	<div> <div>100%</div> <div>100%</div> </div>

The following table lists non-polymeric compounds, carbohydrate monomers and non-standard residues in protein, DNA, RNA chains that are outliers for geometric or electron-density-fit criteria:

Mol	Type	Chain	Res	Chirality	Geometry	Clashes	Electron density
8	Y01	A	1107	X	-	-	-

Continued on next page...

Continued from previous page...

Mol	Type	Chain	Res	Chirality	Geometry	Clashes	Electron density
8	Y01	A	1108	X	-	-	-
8	Y01	A	1109	X	-	X	-
8	Y01	A	1110	X	-	X	-
8	Y01	B	401	X	-	X	-
8	Y01	C	1501	X	-	X	-

2 Entry composition

There are 11 unique types of molecules in this entry. The entry contains 10636 atoms, of which 0 are hydrogens and 0 are deuteriums.

In the tables below, the AltConf column contains the number of residues with at least one atom in alternate conformation and the Trace column contains the number of residues modelled with at most 2 atoms.

- Molecule 1 is a protein called Sodium/potassium-transporting ATPase subunit alpha-1.

Mol	Chain	Residues	Atoms					AltConf	Trace
1	A	976	Total	C	N	O	S	0	0
			7575	4833	1274	1422	46		

- Molecule 2 is a protein called Sodium/potassium-transporting ATPase subunit beta-1.

Mol	Chain	Residues	Atoms					AltConf	Trace
2	B	294	Total	C	N	O	S	0	0
			2404	1557	397	439	11		

- Molecule 3 is a protein called Sodium/potassium-transporting ATPase subunit gamma.

Mol	Chain	Residues	Atoms				AltConf	Trace
3	C	32	Total	C	N	O	0	0
			256	173	39	44		

- Molecule 4 is an oligosaccharide called 2-acetamido-2-deoxy-beta-D-glucopyranose-(1-4)-2-acetamido-2-deoxy-beta-D-glucopyranose.



Mol	Chain	Residues	Atoms				AltConf	Trace
4	D	2	Total	C	N	O	0	0
			28	16	2	10		

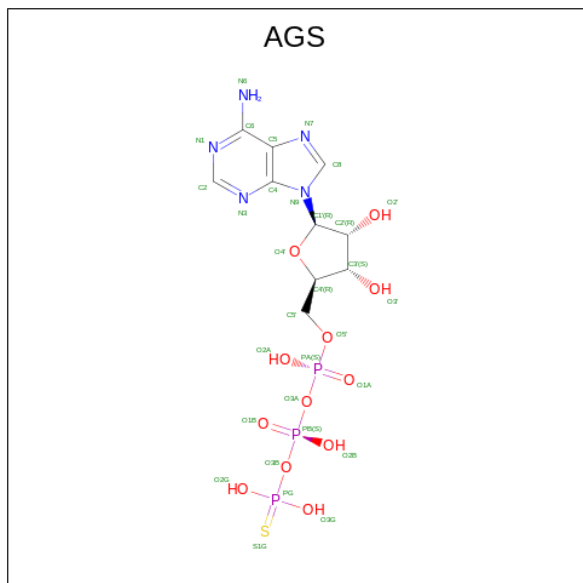
- Molecule 5 is SODIUM ION (three-letter code: NA) (formula: Na) (labeled as "Ligand of Interest" by depositor).

Mol	Chain	Residues	Atoms		AltConf
5	A	4	Total	Na	0
			4	4	

- Molecule 6 is MAGNESIUM ION (three-letter code: MG) (formula: Mg) (labeled as "Ligand of Interest" by depositor).

Mol	Chain	Residues	Atoms		AltConf
6	A	1	Total	Mg	0
			1	1	

- Molecule 7 is PHOSPHOTHIOPHOSPHORIC ACID-ADENYLATE ESTER (three-letter code: AGS) (formula: C₁₀H₁₆N₅O₁₂P₃S) (labeled as "Ligand of Interest" by depositor).

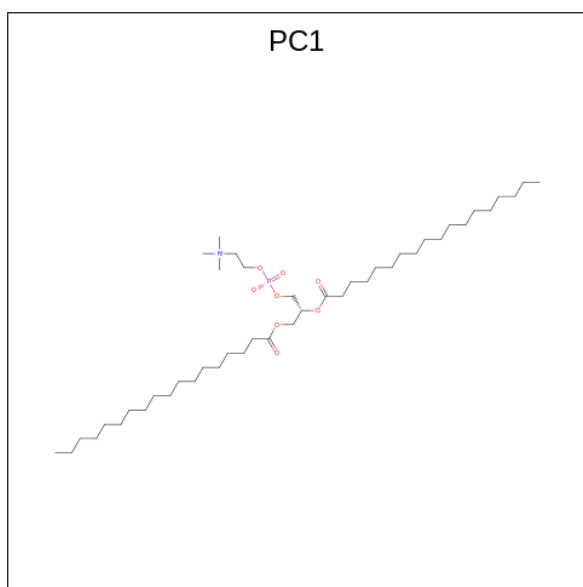


Mol	Chain	Residues	Atoms					AltConf	
7	A	1	Total	C	N	O	P	S	0
			31	10	5	12	3	1	

- Molecule 8 is CHOLESTEROL HEMISUCCINATE (three-letter code: Y01) (formula: C₃₁H₅₀O₄).

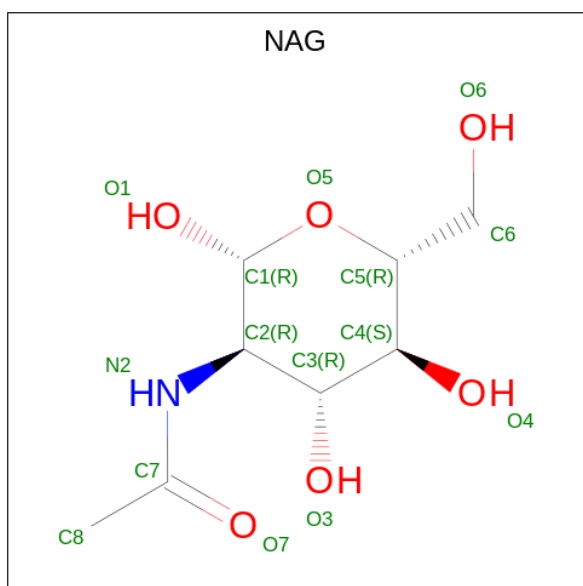


- Molecule 9 is 1,2-DIACYL-SN-GLYCERO-3-PHOSPHOCHOLINE (three-letter code: PC1) (formula: $C_{44}H_{88}NO_8P$).



Mol	Chain	Residues	Atoms					AltConf
9	A	1	Total	C	N	O	P	0
			54	44	1	8	1	
9	B	1	Total	C	N	O	P	0
			54	44	1	8	1	

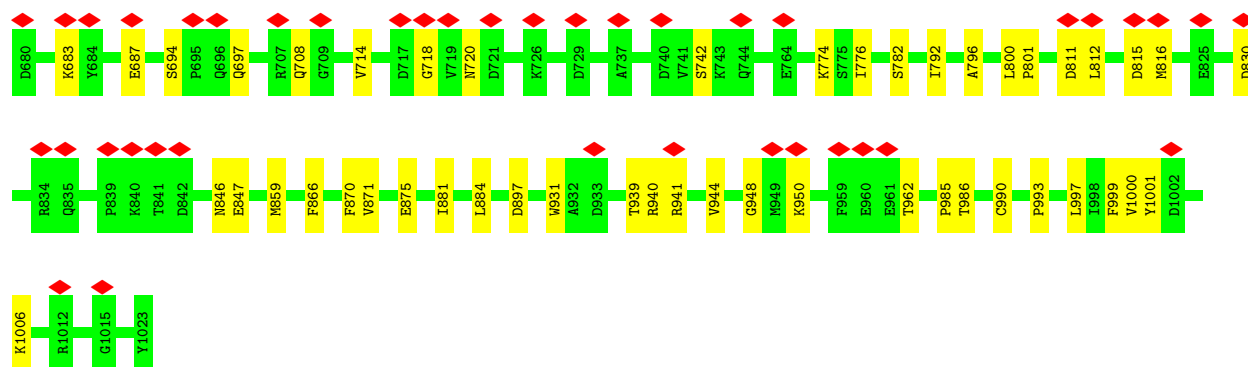
- Molecule 10 is 2-acetamido-2-deoxy-beta-D-glucopyranose (three-letter code: NAG) (formula: $C_8H_{15}NO_6$) (labeled as "Ligand of Interest" by depositor).



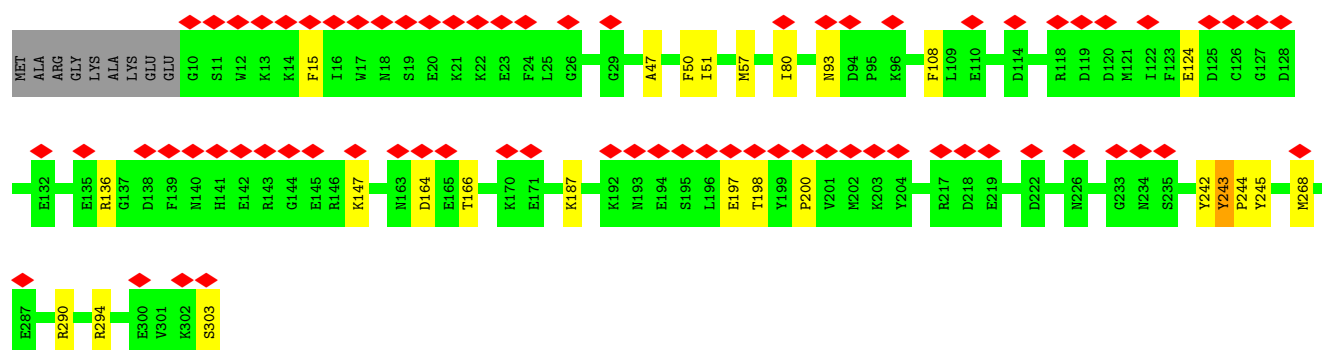
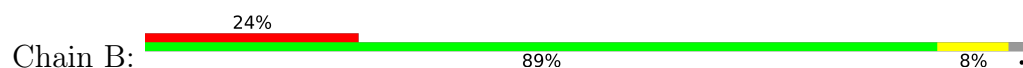
Mol	Chain	Residues	Atoms				AltConf
10	B	1	Total	C	N	O	0
			14	8	1	5	

- Molecule 11 is water.

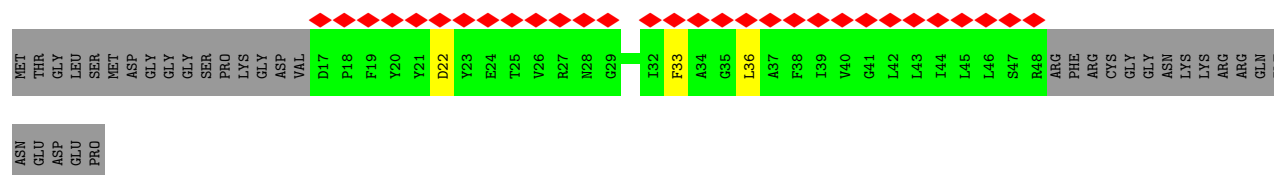
Mol	Chain	Residues	Atoms		AltConf
11	A	5	Total	O	0
			5	5	



• Molecule 2: Sodium/potassium-transporting ATPase subunit beta-1



• Molecule 3: Sodium/potassium-transporting ATPase subunit gamma



• Molecule 4: 2-acetamido-2-deoxy-beta-D-glucopyranose-(1-4)-2-acetamido-2-deoxy-beta-D-glucopyranose



4 Experimental information

Property	Value	Source
EM reconstruction method	SINGLE PARTICLE	Depositor
Imposed symmetry	POINT, Not provided	
Number of particles used	51044	Depositor
Resolution determination method	FSC 0.143 CUT-OFF	Depositor
CTF correction method	PHASE FLIPPING AND AMPLITUDE CORRECTION	Depositor
Microscope	FEI TITAN KRIOS	Depositor
Voltage (kV)	300	Depositor
Electron dose ($e^-/\text{\AA}^2$)	50	Depositor
Minimum defocus (nm)	1200	Depositor
Maximum defocus (nm)	2200	Depositor
Magnification	Not provided	
Image detector	GATAN K3 BIOQUANTUM (6k x 4k)	Depositor
Maximum map value	0.140	Depositor
Minimum map value	-0.072	Depositor
Average map value	0.000	Depositor
Map value standard deviation	0.006	Depositor
Recommended contour level	0.045	Depositor
Map size (\AA)	217.40001, 217.40001, 217.40001	wwPDB
Map dimensions	200, 200, 200	wwPDB
Map angles ($^\circ$)	90.0, 90.0, 90.0	wwPDB
Pixel spacing (\AA)	1.087, 1.087, 1.087	Depositor

5 Model quality

5.1 Standard geometry

Bond lengths and bond angles in the following residue types are not validated in this section: MG, AGS, PC1, NA, NAG, Y01

The Z score for a bond length (or angle) is the number of standard deviations the observed value is removed from the expected value. A bond length (or angle) with $|Z| > 5$ is considered an outlier worth inspection. RMSZ is the root-mean-square of all Z scores of the bond lengths (or angles).

Mol	Chain	Bond lengths		Bond angles	
		RMSZ	$\# Z > 5$	RMSZ	$\# Z > 5$
1	A	0.41	0/7723	0.58	0/10482
2	B	0.47	0/2468	0.56	0/3330
3	C	0.33	0/262	0.50	0/355
All	All	0.42	0/10453	0.57	0/14167

There are no bond length outliers.

There are no bond angle outliers.

There are no chirality outliers.

There are no planarity outliers.

5.2 Too-close contacts

In the following table, the Non-H and H(model) columns list the number of non-hydrogen atoms and hydrogen atoms in the chain respectively. The H(added) column lists the number of hydrogen atoms added and optimized by MolProbity. The Clashes column lists the number of clashes within the asymmetric unit, whereas Symm-Clashes lists symmetry-related clashes.

Mol	Chain	Non-H	H(model)	H(added)	Clashes	Symm-Clashes
1	A	7575	0	7619	132	0
2	B	2404	0	2381	24	0
3	C	256	0	257	6	0
4	D	28	0	25	0	0
5	A	4	0	0	0	0
6	A	1	0	0	0	0
7	A	31	0	12	4	0
8	A	140	0	196	120	0
8	B	35	0	49	58	0
8	C	35	0	49	37	0

Continued on next page...

Continued from previous page...

Mol	Chain	Non-H	H(model)	H(added)	Clashes	Symm-Clashes
9	A	54	0	88	16	0
9	B	54	0	88	7	0
10	B	14	0	13	0	0
11	A	5	0	0	0	0
All	All	10636	0	10777	285	0

The all-atom clashscore is defined as the number of clashes found per 1000 atoms (including hydrogen atoms). The all-atom clashscore for this structure is 13.

All (285) close contacts within the same asymmetric unit are listed below, sorted by their clash magnitude.

Atom-1	Atom-2	Interatomic distance (Å)	Clash overlap (Å)
8:A:1109:Y01:HBFB	8:B:401:Y01:CAE	1.37	1.54
8:A:1109:Y01:CAI	8:B:401:Y01:HAD2	1.41	1.50
8:A:1110:Y01:HAS2	8:B:401:Y01:CAK	1.47	1.42
8:A:1110:Y01:CAS	8:B:401:Y01:HAK2	1.54	1.37
8:A:1109:Y01:CBF	8:B:401:Y01:HAE1	1.64	1.26
1:A:931:TRP:CH2	8:C:1501:Y01:HAE3	1.74	1.20
8:A:1109:Y01:CAI	8:B:401:Y01:CAD	2.22	1.16
8:A:1110:Y01:HAT1	8:B:401:Y01:CAI	1.74	1.16
8:C:1501:Y01:HAB3	8:C:1501:Y01:HAE2	1.24	1.13
1:A:881:ILE:HD11	8:A:1109:Y01:HAV2	1.19	1.12
8:A:1109:Y01:HAK1	8:B:401:Y01:HBD	1.26	1.11
8:A:1109:Y01:CAZ	8:B:401:Y01:CAD	2.31	1.08
1:A:999:PHE:CE1	8:A:1107:Y01:HAC2	1.89	1.08
8:A:1110:Y01:CAA	9:A:1111:PC1:H2I1	1.87	1.03
1:A:999:PHE:CE1	8:A:1107:Y01:CAC	2.42	1.02
8:A:1110:Y01:HAA1	9:A:1111:PC1:H2I1	1.41	1.01
8:A:1109:Y01:HAQ1	8:B:401:Y01:HBG	1.42	1.01
1:A:881:ILE:CD1	8:A:1109:Y01:HAV2	1.90	1.00
1:A:881:ILE:HD11	8:A:1109:Y01:CAV	1.92	1.00
8:A:1109:Y01:HAB1	8:A:1110:Y01:HAA3	1.43	0.99
9:A:1111:PC1:H151	2:B:15:PHE:CZ	1.98	0.98
8:A:1109:Y01:CAB	8:A:1110:Y01:HAA3	1.93	0.97
9:A:1111:PC1:H151	2:B:15:PHE:HZ	1.27	0.97
1:A:931:TRP:CH2	8:C:1501:Y01:CAE	2.48	0.95
8:A:1109:Y01:CAZ	8:B:401:Y01:HAD2	1.94	0.95
8:A:1110:Y01:HAC1	8:B:401:Y01:HAQ2	1.48	0.94
8:A:1109:Y01:CBF	8:B:401:Y01:CAE	2.29	0.93
8:A:1109:Y01:HAQ1	8:B:401:Y01:HAE2	1.49	0.93
8:A:1110:Y01:CAC	8:B:401:Y01:HAQ2	1.98	0.93

Continued on next page...

Continued from previous page...

Atom-1	Atom-2	Interatomic distance (Å)	Clash overlap (Å)
8:A:1110:Y01:OAG	8:B:401:Y01:HAL2	1.69	0.93
8:A:1109:Y01:CAZ	8:B:401:Y01:HAD3	1.97	0.92
3:C:33:PHE:CE2	8:C:1501:Y01:HAT2	2.05	0.92
8:C:1501:Y01:HAE2	8:C:1501:Y01:CAB	2.00	0.91
1:A:870:PHE:HZ	8:A:1109:Y01:CAE	1.84	0.90
8:A:1109:Y01:CAB	8:A:1110:Y01:CAA	2.49	0.90
1:A:870:PHE:CZ	8:A:1109:Y01:HAE1	2.06	0.89
1:A:173:ARG:HG2	1:A:173:ARG:HH21	1.39	0.86
8:A:1109:Y01:HAQ1	8:B:401:Y01:CAE	2.05	0.86
8:A:1110:Y01:CAT	8:B:401:Y01:CAI	2.53	0.86
9:B:402:PC1:H332	9:B:402:PC1:H221	1.56	0.86
1:A:870:PHE:CZ	8:A:1109:Y01:CAE	2.58	0.86
2:B:47:ALA:HB2	8:B:401:Y01:HAN2	1.57	0.85
8:A:1109:Y01:HAB3	8:A:1110:Y01:HAA2	1.60	0.82
1:A:174:ASN:OD1	1:A:175:GLY:N	2.12	0.81
8:A:1109:Y01:CAQ	8:B:401:Y01:HAE2	2.12	0.79
8:A:1107:Y01:CAU	8:A:1107:Y01:HAC1	2.14	0.77
1:A:985:PRO:HA	8:C:1501:Y01:HAM1	1.66	0.77
8:A:1109:Y01:HAB3	8:A:1110:Y01:CAA	2.14	0.77
8:B:401:Y01:HAC1	8:B:401:Y01:CAU	2.15	0.77
1:A:884:LEU:HD13	8:A:1110:Y01:HAD1	1.66	0.77
8:A:1110:Y01:HAC1	8:A:1110:Y01:CAU	2.15	0.77
1:A:100:PHE:HB2	1:A:334:GLU:OE1	1.85	0.77
8:A:1108:Y01:CAU	8:A:1108:Y01:HAC1	2.15	0.77
8:A:1109:Y01:CAQ	8:B:401:Y01:HBG	2.15	0.76
8:A:1109:Y01:HAC1	8:A:1109:Y01:CAU	2.15	0.76
8:A:1110:Y01:HAR2	8:B:401:Y01:HAV2	1.68	0.76
8:C:1501:Y01:CAU	8:C:1501:Y01:HAC1	2.14	0.76
8:C:1501:Y01:HBE	8:C:1501:Y01:CAN	2.15	0.76
8:A:1109:Y01:HAQ1	8:B:401:Y01:CBG	2.14	0.76
1:A:931:TRP:CZ3	8:C:1501:Y01:HAE3	2.20	0.75
8:A:1110:Y01:HAA2	9:A:1111:PC1:H2I1	1.68	0.75
2:B:47:ALA:HB2	8:B:401:Y01:CAN	2.17	0.75
8:A:1110:Y01:CAR	8:B:401:Y01:HAV2	2.17	0.74
1:A:551:ARG:NH2	7:A:1106:AGS:O1B	2.21	0.74
9:B:402:PC1:O12	9:B:402:PC1:H31	1.88	0.73
8:A:1109:Y01:HAC1	8:A:1109:Y01:HAU2	1.71	0.72
1:A:999:PHE:CZ	8:A:1107:Y01:CAC	2.72	0.72
2:B:242:TYR:O	2:B:243:TYR:O	2.08	0.72
1:A:302:LEU:HD21	9:A:1111:PC1:H3G1	1.72	0.71
1:A:870:PHE:HZ	8:A:1109:Y01:HAE1	1.40	0.71

Continued on next page...

Continued from previous page...

Atom-1	Atom-2	Interatomic distance (Å)	Clash overlap (Å)
8:A:1107:Y01:HAC1	8:A:1107:Y01:HAU2	1.72	0.71
8:A:1109:Y01:HAU2	8:B:401:Y01:HAE2	1.72	0.70
8:C:1501:Y01:HBE	8:C:1501:Y01:HAB1	1.74	0.70
1:A:999:PHE:CD1	8:A:1107:Y01:HAC2	2.26	0.70
1:A:859:MET:CE	9:A:1111:PC1:H2D1	2.22	0.70
2:B:51:ILE:HD11	8:B:401:Y01:HAU1	1.72	0.69
8:B:401:Y01:HAC1	8:B:401:Y01:HAU2	1.75	0.69
1:A:792:ILE:HG21	8:A:1109:Y01:HAO2	1.74	0.68
8:A:1109:Y01:HBF	8:B:401:Y01:HAE1	0.69	0.68
9:A:1111:PC1:H121	9:A:1111:PC1:O11	1.93	0.68
8:A:1110:Y01:HAC1	8:A:1110:Y01:HAU2	1.75	0.68
2:B:187:LYS:HG2	2:B:244:PRO:HB3	1.74	0.67
8:A:1108:Y01:HAC1	8:A:1108:Y01:HAU2	1.76	0.67
8:C:1501:Y01:HAC1	8:C:1501:Y01:HAU1	1.76	0.67
1:A:62:GLY:HA2	1:A:172:ILE:O	1.95	0.67
1:A:812:LEU:O	1:A:816:MET:HB2	1.96	0.66
8:C:1501:Y01:HAN1	8:C:1501:Y01:CBE	2.26	0.66
1:A:683:LYS:HB2	1:A:708:GLN:HE22	1.61	0.65
8:A:1110:Y01:HAO1	8:A:1110:Y01:HAB2	1.79	0.65
1:A:502:GLN:HG3	1:A:559:PHE:HB3	1.78	0.64
1:A:931:TRP:HH2	8:C:1501:Y01:CAE	2.08	0.64
1:A:495:ASN:ND2	1:A:500:GLU:O	2.30	0.64
8:A:1109:Y01:CAV	8:B:401:Y01:HAD3	2.28	0.64
1:A:1000:VAL:HG12	9:B:402:PC1:H3G1	1.80	0.64
8:A:1110:Y01:HAT1	8:B:401:Y01:CAZ	2.28	0.64
1:A:999:PHE:CZ	8:A:1107:Y01:HAC3	2.33	0.63
1:A:870:PHE:CZ	8:A:1109:Y01:HAE3	2.33	0.63
8:A:1107:Y01:HAA1	8:A:1107:Y01:HAO1	1.80	0.63
8:A:1109:Y01:HAQ2	8:A:1110:Y01:HAU1	1.81	0.63
1:A:948:GLY:HA2	8:A:1107:Y01:HBC	1.81	0.62
8:C:1501:Y01:CAE	8:C:1501:Y01:HAN1	2.29	0.62
8:C:1501:Y01:HAC1	8:C:1501:Y01:HAU2	1.80	0.62
1:A:962:THR:HG21	8:C:1501:Y01:HAU1	1.82	0.62
8:A:1108:Y01:HAC1	8:A:1108:Y01:HAU1	1.80	0.62
2:B:244:PRO:O	2:B:245:TYR:HB3	1.98	0.62
8:B:401:Y01:HAC1	8:B:401:Y01:HAU1	1.81	0.62
8:A:1109:Y01:CAV	8:B:401:Y01:CAD	2.78	0.62
8:A:1109:Y01:CAK	8:B:401:Y01:HAD2	2.27	0.62
8:A:1110:Y01:HAC1	8:A:1110:Y01:HAU1	1.81	0.61
8:B:401:Y01:HBC	8:B:401:Y01:HAD1	1.83	0.61
8:A:1110:Y01:CAS	8:B:401:Y01:CAK	2.39	0.60

Continued on next page...

Continued from previous page...

Atom-1	Atom-2	Interatomic distance (Å)	Clash overlap (Å)
1:A:931:TRP:CZ3	8:C:1501:Y01:CAE	2.84	0.60
8:A:1109:Y01:HAV1	8:B:401:Y01:HAD3	1.83	0.60
8:A:1107:Y01:HAC1	8:A:1107:Y01:HAU1	1.83	0.60
8:A:1109:Y01:HBC	8:A:1109:Y01:HAD1	1.83	0.60
1:A:173:ARG:HG2	1:A:173:ARG:NH2	2.13	0.59
1:A:172:ILE:O	1:A:172:ILE:HG23	2.02	0.59
1:A:440:LEU:N	1:A:440:LEU:HD23	2.16	0.59
1:A:171:VAL:HG12	1:A:191:VAL:HG12	1.82	0.59
8:A:1110:Y01:HAS2	8:B:401:Y01:HAK2	0.67	0.59
1:A:944:VAL:O	8:A:1107:Y01:CAT	2.50	0.59
1:A:176:GLU:OE2	1:A:176:GLU:HA	2.03	0.59
1:A:226:THR:O	1:A:227:ARG:NH1	2.36	0.58
8:C:1501:Y01:HBE	8:C:1501:Y01:HAN1	1.82	0.58
1:A:64:THR:HG22	1:A:66:ALA:H	1.68	0.58
8:A:1109:Y01:HAC1	8:A:1109:Y01:HAU1	1.85	0.58
8:A:1110:Y01:HAB2	8:A:1110:Y01:CAO	2.34	0.58
9:A:1111:PC1:H3C2	9:A:1111:PC1:H2E1	1.84	0.58
1:A:944:VAL:O	8:A:1107:Y01:HAT1	2.03	0.57
1:A:985:PRO:HB3	8:C:1501:Y01:HAL1	1.85	0.57
8:A:1110:Y01:HAD1	8:A:1110:Y01:HBC	1.86	0.57
1:A:875:GLU:OE1	8:A:1108:Y01:OAG	2.23	0.57
1:A:524:HIS:HB2	1:A:526:LYS:HE3	1.87	0.56
8:C:1501:Y01:HAB1	8:C:1501:Y01:HBG	1.87	0.56
1:A:503:HIS:NE2	1:A:567:GLU:OE1	2.38	0.56
2:B:47:ALA:HA	8:B:401:Y01:HAO2	1.87	0.56
1:A:985:PRO:CA	8:C:1501:Y01:HAM1	2.35	0.56
8:A:1109:Y01:CAS	8:B:401:Y01:CAE	2.84	0.56
8:A:1109:Y01:HAP2	8:A:1110:Y01:HBB	1.89	0.55
8:A:1109:Y01:HAS2	2:B:50:PHE:HE2	1.71	0.55
1:A:796:ALA:HB2	8:A:1110:Y01:HAE1	1.87	0.55
1:A:870:PHE:CE2	8:A:1109:Y01:HAE3	2.42	0.55
8:A:1109:Y01:HAV1	8:B:401:Y01:CAD	2.37	0.55
1:A:100:PHE:HD2	1:A:334:GLU:OE2	1.89	0.54
8:A:1109:Y01:CAK	8:B:401:Y01:HBD	2.19	0.54
3:C:33:PHE:CZ	8:C:1501:Y01:HBF	2.43	0.54
2:B:290:ARG:HE	2:B:294:ARG:HH22	1.56	0.54
8:C:1501:Y01:HAB1	8:C:1501:Y01:CBE	2.36	0.54
8:A:1110:Y01:CAA	9:A:1111:PC1:C2I	2.75	0.53
1:A:962:THR:HG21	8:C:1501:Y01:CAU	2.39	0.53
8:A:1110:Y01:CAO	8:A:1110:Y01:CAB	2.86	0.53
1:A:62:GLY:CA	1:A:172:ILE:O	2.57	0.53

Continued on next page...

Continued from previous page...

Atom-1	Atom-2	Interatomic distance (Å)	Clash overlap (Å)
1:A:437:GLN:NE2	1:A:446:ALA:O	2.39	0.52
1:A:379:GLY:O	1:A:596:ARG:NH1	2.41	0.52
8:A:1109:Y01:CAU	8:B:401:Y01:HAE2	2.37	0.52
1:A:100:PHE:HB2	1:A:334:GLU:CD	2.29	0.52
1:A:389:ALA:O	1:A:590:SER:OG	2.24	0.51
1:A:846:ASN:HA	9:A:1111:PC1:O14	2.11	0.51
1:A:43:ASP:OD1	1:A:43:ASP:N	2.34	0.51
1:A:866:PHE:CE2	8:A:1109:Y01:HAJ1	2.45	0.51
8:A:1109:Y01:HAI	8:B:401:Y01:CAD	2.34	0.51
1:A:173:ARG:NH2	1:A:173:ARG:CG	2.73	0.51
1:A:950:LYS:HE3	8:A:1107:Y01:OAH	2.11	0.50
1:A:415:SER:OG	1:A:416:ALA:N	2.44	0.50
8:C:1501:Y01:CAB	8:C:1501:Y01:HBE	2.39	0.50
1:A:897:ASP:OD1	1:A:897:ASP:N	2.43	0.50
1:A:430:ARG:N	1:A:453:GLU:OE2	2.44	0.50
2:B:197:GLU:HG2	2:B:198:THR:HG23	1.94	0.49
1:A:440:LEU:HD12	1:A:444:LYS:C	2.33	0.49
1:A:792:ILE:HD11	8:A:1110:Y01:HAA3	1.94	0.49
8:B:401:Y01:CAJ	8:B:401:Y01:HAP2	2.43	0.49
2:B:242:TYR:C	2:B:243:TYR:O	2.50	0.49
1:A:718:GLY:O	1:A:742:SER:OG	2.30	0.49
1:A:871:VAL:HG22	2:B:57:MET:HG3	1.94	0.49
8:A:1110:Y01:CAT	8:B:401:Y01:HAI	2.39	0.49
1:A:939:THR:OG1	1:A:1006:LYS:NZ	2.45	0.49
1:A:607:ARG:NH2	1:A:632:GLY:O	2.45	0.49
2:B:136:ARG:NH1	2:B:147:LYS:O	2.46	0.49
1:A:503:HIS:O	1:A:560:LEU:HB2	2.12	0.49
1:A:173:ARG:HH21	1:A:173:ARG:CG	2.14	0.48
1:A:694:SER:HB3	1:A:697:GLN:HE21	1.76	0.48
8:C:1501:Y01:CAU	8:C:1501:Y01:CAC	2.85	0.48
8:A:1110:Y01:HAA1	9:A:1111:PC1:C2I	2.28	0.48
1:A:75:ASP:OD2	1:A:264:ARG:NH2	2.46	0.48
8:A:1107:Y01:CAC	8:A:1107:Y01:CAU	2.85	0.48
1:A:859:MET:HE1	9:A:1111:PC1:H2D1	1.95	0.48
8:A:1109:Y01:CAN	8:A:1109:Y01:HAC2	2.44	0.48
1:A:931:TRP:HH2	8:C:1501:Y01:HAE1	1.78	0.48
8:A:1107:Y01:CAC	8:A:1107:Y01:HAU2	2.43	0.48
8:A:1109:Y01:CAU	8:A:1109:Y01:CAC	2.85	0.48
8:B:401:Y01:CAJ	8:B:401:Y01:CAP	2.91	0.48
8:C:1501:Y01:HAB1	8:C:1501:Y01:CBG	2.43	0.48
1:A:679:ASP:OD1	1:A:679:ASP:N	2.40	0.48

Continued on next page...

Continued from previous page...

Atom-1	Atom-2	Interatomic distance (Å)	Clash overlap (Å)
1:A:931:TRP:CH2	8:C:1501:Y01:HAE1	2.45	0.48
8:C:1501:Y01:CAB	8:C:1501:Y01:HBG	2.44	0.47
2:B:47:ALA:HB1	8:B:401:Y01:CAC	2.43	0.47
8:A:1109:Y01:HAU2	8:B:401:Y01:CAE	2.41	0.47
8:C:1501:Y01:CAE	8:C:1501:Y01:CAB	2.85	0.47
1:A:67:ARG:NH1	1:A:70:GLU:OE1	2.47	0.47
1:A:558:LEU:HD12	1:A:583:LEU:HA	1.97	0.47
1:A:575:ASP:O	1:A:577:ASN:ND2	2.47	0.47
8:B:401:Y01:HAP2	8:B:401:Y01:HAJ2	1.97	0.47
8:A:1110:Y01:HAD1	8:A:1110:Y01:CBC	2.45	0.47
1:A:830:ASP:OD2	1:A:941:ARG:NH2	2.48	0.47
7:A:1106:AGS:H3'	7:A:1106:AGS:H8	1.97	0.46
8:A:1107:Y01:CAK	8:A:1107:Y01:HAD3	2.44	0.46
1:A:884:LEU:HD13	8:A:1110:Y01:CAD	2.42	0.46
1:A:519:SER:OG	1:A:582:ASN:ND2	2.49	0.46
8:A:1109:Y01:HAD1	8:A:1109:Y01:CBC	2.44	0.46
8:B:401:Y01:HAD1	8:B:401:Y01:CBC	2.44	0.46
1:A:950:LYS:CE	8:A:1107:Y01:OAH	2.64	0.46
8:A:1109:Y01:CAN	8:A:1109:Y01:CAC	2.93	0.46
1:A:215:ASN:O	1:A:219:THR:OG1	2.29	0.46
1:A:495:ASN:OD1	1:A:495:ASN:N	2.47	0.46
1:A:482:PHE:HE1	1:A:487:LYS:HA	1.81	0.45
8:A:1110:Y01:HBE	8:A:1110:Y01:HAJ1	1.55	0.45
8:A:1109:Y01:CAB	8:A:1110:Y01:HAA2	2.27	0.45
9:B:402:PC1:H3E1	9:B:402:PC1:H3H1	1.80	0.45
1:A:232:THR:HB	1:A:239:THR:HA	1.99	0.45
1:A:316:THR:OG1	1:A:319:GLU:OE1	2.32	0.45
8:A:1110:Y01:CAU	8:B:401:Y01:CAK	2.95	0.45
1:A:336:LEU:HD21	1:A:776:ILE:HG12	1.98	0.45
1:A:638:ASN:ND2	1:A:687:GLU:OE2	2.49	0.45
8:A:1109:Y01:HAQ1	8:B:401:Y01:CBI	2.47	0.45
1:A:441:PRO:O	1:A:445:ARG:NE	2.48	0.45
2:B:268:MET:SD	2:B:303:SER:OG	2.75	0.45
1:A:450:ASP:OD1	1:A:450:ASP:N	2.46	0.44
1:A:619:ASP:OD1	7:A:1106:AGS:O3'	2.36	0.44
1:A:774:LYS:HE2	1:A:940:ARG:HG3	1.99	0.44
1:A:986:THR:OG1	8:A:1108:Y01:HAR2	2.18	0.44
1:A:316:THR:OG1	1:A:316:THR:O	2.35	0.44
2:B:124:GLU:HB3	2:B:147:LYS:HE3	1.98	0.44
1:A:565:PHE:HA	1:A:566:PRO:HD3	1.85	0.44
1:A:1000:VAL:CG1	9:B:402:PC1:H3G1	2.45	0.44

Continued on next page...

Continued from previous page...

Atom-1	Atom-2	Interatomic distance (Å)	Clash overlap (Å)
9:A:1111:PC1:H151	2:B:15:PHE:CE1	2.50	0.44
1:A:78:ASN:HB3	1:A:183:GLU:HA	1.99	0.44
8:A:1109:Y01:CBD	8:B:401:Y01:HAE1	2.41	0.44
2:B:80:ILE:HD12	2:B:80:ILE:HA	1.75	0.44
1:A:985:PRO:HB3	8:C:1501:Y01:CAL	2.48	0.43
1:A:51:LEU:HD22	1:A:59:LEU:HD21	2.01	0.43
1:A:440:LEU:HD11	1:A:445:ARG:HA	2.01	0.43
1:A:870:PHE:CE2	8:A:1109:Y01:CAE	3.01	0.43
8:A:1108:Y01:CAU	8:A:1108:Y01:CAC	2.85	0.43
2:B:80:ILE:HG12	2:B:108:PHE:CD2	2.54	0.43
2:B:164:ASP:OD1	2:B:166:THR:OG1	2.33	0.43
1:A:990:CYS:HA	8:A:1108:Y01:CAD	2.48	0.42
3:C:36:LEU:HD23	3:C:36:LEU:HA	1.92	0.42
1:A:993:PRO:HG2	8:A:1108:Y01:HAE3	2.01	0.42
8:C:1501:Y01:HAB3	8:C:1501:Y01:CAE	2.18	0.42
1:A:847:GLU:HG3	9:A:1111:PC1:H221	2.02	0.42
2:B:244:PRO:O	2:B:245:TYR:CB	2.62	0.42
1:A:241:ASN:HB3	1:A:242:ILE:H	1.51	0.42
1:A:421:LEU:HD21	1:A:589:ILE:HD11	2.02	0.42
1:A:518:CYS:HA	1:A:583:LEU:HB2	2.01	0.42
1:A:811:ASP:O	1:A:815:ASP:HB2	2.20	0.42
1:A:881:ILE:HD11	8:A:1109:Y01:HAV1	1.94	0.42
3:C:33:PHE:CZ	8:C:1501:Y01:HAS2	2.54	0.42
1:A:1001:TYR:HD1	9:B:402:PC1:H3C1	1.84	0.42
1:A:997:LEU:HD11	9:B:402:PC1:H2I3	2.02	0.42
1:A:227:ARG:HD3	1:A:227:ARG:HA	1.89	0.41
1:A:792:ILE:HG13	8:A:1109:Y01:HAO2	2.03	0.41
8:A:1107:Y01:HAD3	8:A:1107:Y01:HAK1	2.02	0.41
8:A:1109:Y01:CAU	8:B:401:Y01:CAE	2.97	0.41
1:A:374:CYS:HB2	1:A:714:VAL:HG22	2.03	0.41
1:A:431:ALA:N	1:A:453:GLU:OE2	2.53	0.41
8:C:1501:Y01:OAG	8:C:1501:Y01:HAV1	2.20	0.41
1:A:71:ILE:HD12	1:A:74:ARG:HH21	1.86	0.41
1:A:391:MET:HG2	1:A:589:ILE:HG12	2.03	0.41
7:A:1106:AGS:S1G	7:A:1106:AGS:O2B	2.79	0.41
1:A:475:ALA:HB3	1:A:494:LYS:HB2	2.03	0.41
3:C:33:PHE:HZ	8:C:1501:Y01:HAU2	1.85	0.41
8:C:1501:Y01:HAE2	8:C:1501:Y01:HAN1	2.01	0.41
1:A:171:VAL:O	1:A:177:LYS:HA	2.21	0.41
1:A:720:ASN:OD1	1:A:720:ASN:N	2.54	0.41
1:A:206:ILE:HD11	1:A:257:ILE:HB	2.02	0.41

Continued on next page...

Continued from previous page...

Atom-1	Atom-2	Interatomic distance (Å)	Clash overlap (Å)
1:A:635:SER:HB3	1:A:638:ASN:HD22	1.86	0.41
2:B:93:ASN:OD1	2:B:93:ASN:N	2.45	0.41
3:C:22:ASP:OD1	3:C:22:ASP:N	2.54	0.41
1:A:155:SER:O	1:A:159:GLU:HG2	2.22	0.40
8:A:1107:Y01:HAA1	8:A:1107:Y01:CAO	2.49	0.40
8:B:401:Y01:HAJ2	8:B:401:Y01:HAB1	1.83	0.40
1:A:170:LEU:HD23	1:A:192:GLU:HB3	2.02	0.40
1:A:800:LEU:HA	1:A:801:PRO:HD3	1.93	0.40
1:A:363:ALA:HA	1:A:366:THR:HG22	2.03	0.40
9:A:1111:PC1:H152	9:A:1111:PC1:H112	1.80	0.40

There are no symmetry-related clashes.

5.3 Torsion angles

5.3.1 Protein backbone

In the following table, the Percentiles column shows the percent Ramachandran outliers of the chain as a percentile score with respect to all PDB entries followed by that with respect to all EM entries.

The Analysed column shows the number of residues for which the backbone conformation was analysed, and the total number of residues.

Mol	Chain	Analysed	Favoured	Allowed	Outliers	Percentiles	
1	A	972/1023 (95%)	888 (91%)	75 (8%)	9 (1%)	14	43
2	B	292/303 (96%)	269 (92%)	21 (7%)	2 (1%)	19	49
3	C	30/66 (46%)	25 (83%)	5 (17%)	0	100	100
All	All	1294/1392 (93%)	1182 (91%)	101 (8%)	11 (1%)	17	43

All (11) Ramachandran outliers are listed below:

Mol	Chain	Res	Type
1	A	317	TRP
1	A	441	PRO
1	A	176	GLU
1	A	177	LYS
1	A	84	PRO
1	A	175	GLY
1	A	241	ASN

Continued on next page...

Continued from previous page...

Mol	Chain	Res	Type
1	A	242	ILE
1	A	173	ARG
2	B	243	TYR
2	B	200	PRO

5.3.2 Protein sidechains ⓘ

In the following table, the Percentiles column shows the percent sidechain outliers of the chain as a percentile score with respect to all PDB entries followed by that with respect to all EM entries.

The Analysed column shows the number of residues for which the sidechain conformation was analysed, and the total number of residues.

Mol	Chain	Analysed	Rotameric	Outliers	Percentiles	
1	A	830/866 (96%)	823 (99%)	7 (1%)	79	93
2	B	263/269 (98%)	263 (100%)	0	100	100
3	C	26/53 (49%)	26 (100%)	0	100	100
All	All	1119/1188 (94%)	1112 (99%)	7 (1%)	82	95

All (7) residues with a non-rotameric sidechain are listed below:

Mol	Chain	Res	Type
1	A	165	VAL
1	A	173	ARG
1	A	176	GLU
1	A	204	ARG
1	A	440	LEU
1	A	551	ARG
1	A	782	SER

Sometimes sidechains can be flipped to improve hydrogen bonding and reduce clashes. All (10) such sidechains are listed below:

Mol	Chain	Res	Type
1	A	248	ASN
1	A	486	ASN
1	A	582	ASN
1	A	638	ASN
1	A	654	GLN
1	A	697	GLN

Continued on next page...

Continued from previous page...

Mol	Chain	Res	Type
1	A	708	GLN
2	B	18	ASN
2	B	104	ASN
2	B	140	ASN

5.3.3 RNA ⓘ

There are no RNA molecules in this entry.

5.4 Non-standard residues in protein, DNA, RNA chains ⓘ

There are no non-standard protein/DNA/RNA residues in this entry.

5.5 Carbohydrates ⓘ

2 monosaccharides are modelled in this entry.

In the following table, the Counts columns list the number of bonds (or angles) for which Mogul statistics could be retrieved, the number of bonds (or angles) that are observed in the model and the number of bonds (or angles) that are defined in the Chemical Component Dictionary. The Link column lists molecule types, if any, to which the group is linked. The Z score for a bond length (or angle) is the number of standard deviations the observed value is removed from the expected value. A bond length (or angle) with $|Z| > 2$ is considered an outlier worth inspection. RMSZ is the root-mean-square of all Z scores of the bond lengths (or angles).

Mol	Type	Chain	Res	Link	Bond lengths			Bond angles		
					Counts	RMSZ	$\# Z > 2$	Counts	RMSZ	$\# Z > 2$
4	NAG	D	1	4,2	14,14,15	0.20	0	17,19,21	0.51	0
4	NAG	D	2	4	14,14,15	0.31	0	17,19,21	0.47	0

In the following table, the Chirals column lists the number of chiral outliers, the number of chiral centers analysed, the number of these observed in the model and the number defined in the Chemical Component Dictionary. Similar counts are reported in the Torsion and Rings columns. '-' means no outliers of that kind were identified.

Mol	Type	Chain	Res	Link	Chirals	Torsions	Rings
4	NAG	D	1	4,2	-	4/6/23/26	0/1/1/1
4	NAG	D	2	4	-	2/6/23/26	0/1/1/1

There are no bond length outliers.

There are no bond angle outliers.

There are no chirality outliers.

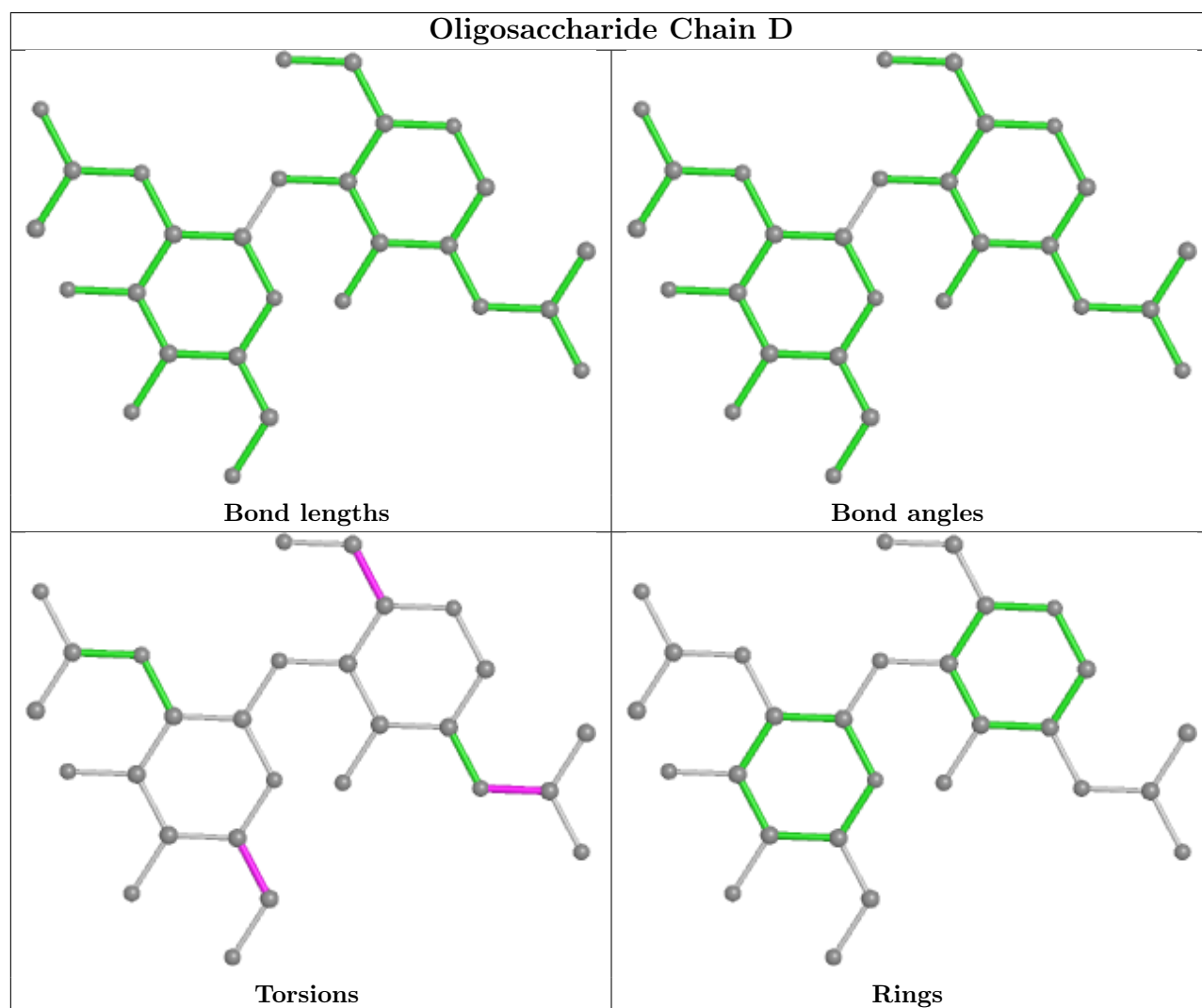
All (6) torsion outliers are listed below:

Mol	Chain	Res	Type	Atoms
4	D	2	NAG	O5-C5-C6-O6
4	D	1	NAG	C8-C7-N2-C2
4	D	1	NAG	O7-C7-N2-C2
4	D	1	NAG	O5-C5-C6-O6
4	D	1	NAG	C4-C5-C6-O6
4	D	2	NAG	C4-C5-C6-O6

There are no ring outliers.

No monomer is involved in short contacts.

The following is a two-dimensional graphical depiction of Mogul quality analysis of bond lengths, bond angles, torsion angles, and ring geometry for oligosaccharide.



5.6 Ligand geometry

Of 15 ligands modelled in this entry, 5 are monoatomic - leaving 10 for Mogul analysis.

In the following table, the Counts columns list the number of bonds (or angles) for which Mogul statistics could be retrieved, the number of bonds (or angles) that are observed in the model and the number of bonds (or angles) that are defined in the Chemical Component Dictionary. The Link column lists molecule types, if any, to which the group is linked. The Z score for a bond length (or angle) is the number of standard deviations the observed value is removed from the expected value. A bond length (or angle) with $|Z| > 2$ is considered an outlier worth inspection. RMSZ is the root-mean-square of all Z scores of the bond lengths (or angles).

Mol	Type	Chain	Res	Link	Bond lengths			Bond angles		
					Counts	RMSZ	# Z > 2	Counts	RMSZ	# Z > 2
7	AGS	A	1106	-	26,33,33	5.19	13 (50%)	26,52,52	1.47	3 (11%)
8	Y01	A	1109	-	38,38,38	3.28	15 (39%)	57,57,57	2.44	15 (26%)
9	PC1	A	1111	-	53,53,53	0.98	4 (7%)	59,61,61	1.10	3 (5%)
8	Y01	A	1110	-	38,38,38	3.27	15 (39%)	57,57,57	2.46	16 (28%)
8	Y01	B	401	-	38,38,38	3.27	15 (39%)	57,57,57	2.46	16 (28%)
10	NAG	B	403	2	14,14,15	0.48	0	17,19,21	0.66	1 (5%)
8	Y01	A	1107	-	38,38,38	3.31	16 (42%)	57,57,57	5.25	19 (33%)
8	Y01	A	1108	-	38,38,38	3.24	15 (39%)	57,57,57	2.48	14 (24%)
9	PC1	B	402	-	53,53,53	0.98	4 (7%)	59,61,61	1.13	3 (5%)
8	Y01	C	1501	-	38,38,38	3.25	16 (42%)	57,57,57	2.57	17 (29%)

In the following table, the Chirals column lists the number of chiral outliers, the number of chiral centers analysed, the number of these observed in the model and the number defined in the Chemical Component Dictionary. Similar counts are reported in the Torsion and Rings columns. '-' means no outliers of that kind were identified.

Mol	Type	Chain	Res	Link	Chirals	Torsions	Rings
8	Y01	A	1109	-	5/5/12/13	12/19/77/77	0/4/4/4
7	AGS	A	1106	-	-	3/17/38/38	0/3/3/3
9	PC1	A	1111	-	-	37/57/57/57	-
8	Y01	A	1110	-	5/5/12/13	10/19/77/77	1/4/4/4
8	Y01	B	401	-	5/5/12/13	11/19/77/77	1/4/4/4
10	NAG	B	403	2	-	2/6/23/26	0/1/1/1
8	Y01	A	1107	-	4/4/12/13	13/19/77/77	0/4/4/4
8	Y01	A	1108	-	5/5/12/13	12/19/77/77	0/4/4/4
9	PC1	B	402	-	-	36/57/57/57	-
8	Y01	C	1501	-	5/5/12/13	17/19/77/77	0/4/4/4

All (113) bond length outliers are listed below:

Mol	Chain	Res	Type	Atoms	Z	Observed(Å)	Ideal(Å)
7	A	1106	AGS	C2'-C1'	-14.90	1.31	1.53
8	A	1107	Y01	CAI-CAZ	10.36	1.55	1.33
8	A	1109	Y01	CAI-CAZ	10.35	1.55	1.33
8	B	401	Y01	CAI-CAZ	10.27	1.55	1.33
8	C	1501	Y01	CAI-CAZ	10.27	1.55	1.33
8	A	1110	Y01	CAI-CAZ	10.25	1.55	1.33
8	A	1108	Y01	CAI-CAZ	10.15	1.55	1.33
7	A	1106	AGS	C3'-C4'	-9.59	1.28	1.53
7	A	1106	AGS	C4-N3	9.41	1.48	1.35
7	A	1106	AGS	O4'-C1'	9.23	1.54	1.41
7	A	1106	AGS	C2-N3	9.06	1.46	1.32
8	A	1108	Y01	CBI-CBG	-8.04	1.39	1.55
8	C	1501	Y01	CBI-CBG	-8.04	1.39	1.55
8	A	1107	Y01	CBI-CBG	-7.91	1.39	1.55
8	A	1110	Y01	CBI-CBG	-7.84	1.40	1.55
8	B	401	Y01	CBI-CBG	-7.84	1.40	1.55
8	A	1109	Y01	CBI-CBG	-7.78	1.40	1.55
8	C	1501	Y01	CAK-CAI	6.41	1.64	1.50
8	B	401	Y01	CBD-CBG	6.40	1.65	1.53
8	A	1110	Y01	CBD-CBG	6.37	1.65	1.53
8	A	1109	Y01	CAK-CAI	6.35	1.63	1.50
8	A	1110	Y01	CAK-CAI	6.35	1.63	1.50
8	B	401	Y01	CAK-CAI	6.31	1.63	1.50
8	A	1107	Y01	CAK-CAI	6.26	1.63	1.50
8	A	1109	Y01	CBD-CBG	6.26	1.65	1.53
8	C	1501	Y01	CBD-CBG	6.22	1.65	1.53
8	A	1108	Y01	CAK-CAI	6.19	1.63	1.50
8	A	1107	Y01	CBD-CBG	6.08	1.65	1.53
8	A	1108	Y01	CBD-CBG	6.03	1.65	1.53
8	A	1108	Y01	CBH-CBF	5.80	1.65	1.56
8	A	1107	Y01	CBH-CBF	5.67	1.65	1.56
7	A	1106	AGS	O4'-C4'	5.41	1.57	1.45
8	B	401	Y01	CBH-CBF	5.32	1.65	1.56
8	A	1110	Y01	CBH-CBF	5.30	1.64	1.56
8	A	1109	Y01	CBH-CBF	5.12	1.64	1.56
7	A	1106	AGS	C2-N1	5.03	1.43	1.33
8	A	1109	Y01	CAU-CBI	4.82	1.62	1.54
8	A	1107	Y01	CAU-CBI	4.76	1.62	1.54
8	A	1110	Y01	CAU-CBI	4.72	1.62	1.54
8	B	401	Y01	CAU-CBI	4.67	1.62	1.54
8	C	1501	Y01	CAU-CBI	4.66	1.62	1.54
8	C	1501	Y01	CBH-CBF	4.62	1.63	1.56

Continued on next page...

Continued from previous page...

Mol	Chain	Res	Type	Atoms	Z	Observed(Å)	Ideal(Å)
8	A	1108	Y01	CAU-CBI	4.54	1.62	1.54
7	A	1106	AGS	PG-O2G	4.15	1.68	1.54
8	A	1110	Y01	CAQ-CBG	4.06	1.62	1.54
8	A	1109	Y01	CAQ-CBG	4.05	1.62	1.54
8	B	401	Y01	CAQ-CBG	4.04	1.62	1.54
8	A	1107	Y01	CAQ-CBG	4.01	1.62	1.54
8	C	1501	Y01	CAQ-CBG	4.01	1.62	1.54
8	A	1108	Y01	CAQ-CBG	3.86	1.62	1.54
7	A	1106	AGS	C2'-C3'	3.82	1.63	1.53
8	A	1107	Y01	CAT-CBH	3.74	1.61	1.54
8	A	1107	Y01	CAP-CBE	-3.52	1.47	1.54
8	A	1109	Y01	CAV-CAZ	3.43	1.59	1.51
8	A	1108	Y01	CAP-CBE	-3.42	1.47	1.54
8	A	1109	Y01	CAP-CBE	-3.39	1.47	1.54
8	A	1110	Y01	CAP-CBE	-3.39	1.47	1.54
8	B	401	Y01	CAV-CAZ	3.37	1.59	1.51
8	B	401	Y01	CAP-CBE	-3.36	1.47	1.54
8	C	1501	Y01	CAP-CBE	-3.35	1.47	1.54
8	A	1110	Y01	CAV-CAZ	3.35	1.58	1.51
8	C	1501	Y01	CAV-CAZ	3.27	1.58	1.51
8	A	1109	Y01	CAT-CBH	3.25	1.60	1.54
8	A	1107	Y01	CAV-CAZ	3.23	1.58	1.51
7	A	1106	AGS	PG-O3G	3.23	1.65	1.54
8	A	1110	Y01	CAT-CBH	3.19	1.60	1.54
8	B	401	Y01	CAT-CBH	3.17	1.60	1.54
8	C	1501	Y01	CAT-CBH	3.16	1.60	1.54
8	A	1108	Y01	CAV-CAZ	3.15	1.58	1.51
8	C	1501	Y01	CAS-CBF	-3.12	1.48	1.53
8	A	1107	Y01	OAW-CAY	3.10	1.43	1.34
8	A	1110	Y01	OAW-CAY	3.07	1.43	1.34
8	B	401	Y01	OAW-CAY	3.07	1.43	1.34
8	A	1109	Y01	OAW-CAY	3.07	1.43	1.34
8	A	1107	Y01	CAS-CBF	-3.00	1.48	1.53
8	A	1108	Y01	OAW-CAY	2.98	1.42	1.34
8	A	1107	Y01	CAR-CBC	2.96	1.59	1.51
8	A	1108	Y01	CAT-CBH	2.95	1.59	1.54
8	C	1501	Y01	OAW-CAY	2.91	1.42	1.34
8	B	401	Y01	CAR-CBC	2.89	1.58	1.51
8	A	1109	Y01	CAS-CBF	-2.88	1.48	1.53
8	A	1110	Y01	CAR-CBC	2.87	1.58	1.51
8	A	1109	Y01	CAR-CBC	2.77	1.58	1.51
8	A	1108	Y01	CAR-CBC	2.75	1.58	1.51

Continued on next page...

Continued from previous page...

Mol	Chain	Res	Type	Atoms	Z	Observed(Å)	Ideal(Å)
8	B	401	Y01	CAS-CBF	-2.74	1.49	1.53
8	A	1110	Y01	CAS-CBF	-2.71	1.49	1.53
8	C	1501	Y01	CAR-CBC	2.71	1.58	1.51
8	C	1501	Y01	OAW-CBC	-2.66	1.39	1.46
8	A	1107	Y01	OAW-CBC	-2.65	1.40	1.46
8	B	401	Y01	OAW-CBC	-2.63	1.40	1.46
8	A	1108	Y01	OAW-CBC	-2.62	1.40	1.46
8	A	1109	Y01	OAW-CBC	-2.62	1.40	1.46
7	A	1106	AGS	C6-C5	2.58	1.52	1.43
8	A	1110	Y01	OAW-CBC	-2.57	1.40	1.46
7	A	1106	AGS	C6-N6	2.54	1.43	1.34
8	A	1108	Y01	CAS-CBF	-2.49	1.49	1.53
9	A	1111	PC1	O21-C2	-2.46	1.40	1.46
8	A	1109	Y01	CBI-CBE	2.44	1.59	1.55
8	A	1110	Y01	CBI-CBE	2.40	1.59	1.55
9	A	1111	PC1	O31-C31	2.39	1.40	1.33
7	A	1106	AGS	C5'-C4'	2.38	1.59	1.51
9	B	402	PC1	O21-C2	-2.38	1.40	1.46
8	B	401	Y01	CBI-CBE	2.36	1.59	1.55
9	B	402	PC1	O31-C31	2.35	1.40	1.33
8	A	1107	Y01	CBI-CBE	2.34	1.59	1.55
8	A	1108	Y01	CBI-CBE	2.34	1.59	1.55
9	B	402	PC1	O21-C21	2.29	1.40	1.34
8	C	1501	Y01	CBI-CBE	2.24	1.59	1.55
9	A	1111	PC1	O21-C21	2.18	1.40	1.34
9	B	402	PC1	O31-C3	-2.15	1.40	1.45
9	A	1111	PC1	O31-C3	-2.12	1.40	1.45
8	A	1107	Y01	CBD-CBF	-2.11	1.49	1.53
8	C	1501	Y01	CBD-CBF	-2.06	1.49	1.53

All (107) bond angle outliers are listed below:

Mol	Chain	Res	Type	Atoms	Z	Observed(°)	Ideal(°)
8	A	1107	Y01	CAD-CBH-CBF	-26.37	80.24	111.68
8	A	1107	Y01	CAD-CBH-CAZ	-14.86	84.30	108.34
8	A	1107	Y01	CAD-CBH-CAT	-14.31	86.83	109.43
8	C	1501	Y01	CAU-CBI-CBE	-8.60	103.70	116.57
8	A	1107	Y01	CAU-CBI-CBE	-8.59	103.71	116.57
8	A	1107	Y01	CAT-CBH-CBF	8.48	120.57	108.73
8	A	1109	Y01	CAU-CBI-CBE	-8.42	103.97	116.57
8	A	1110	Y01	CAU-CBI-CBE	-8.41	103.99	116.57
8	B	401	Y01	CAU-CBI-CBE	-8.40	104.01	116.57

Continued on next page...

Continued from previous page...

Mol	Chain	Res	Type	Atoms	Z	Observed(°)	Ideal(°)
8	A	1108	Y01	CAU-CBI-CBE	-7.86	104.81	116.57
8	C	1501	Y01	CBH-CAZ-CAI	-7.50	111.42	122.90
8	A	1107	Y01	CBF-CBH-CAZ	7.12	120.82	109.65
8	A	1108	Y01	CAK-CAI-CAZ	-7.09	111.97	125.06
8	A	1108	Y01	CBH-CAZ-CAI	-7.06	112.09	122.90
8	A	1110	Y01	CBH-CAZ-CAI	-6.76	112.56	122.90
8	B	401	Y01	CBH-CAZ-CAI	-6.74	112.59	122.90
8	A	1109	Y01	CBH-CAZ-CAI	-6.45	113.03	122.90
8	B	401	Y01	CAK-CAI-CAZ	-6.41	113.24	125.06
8	A	1110	Y01	CAK-CAI-CAZ	-6.40	113.25	125.06
8	A	1107	Y01	CBH-CAZ-CAI	-6.15	113.49	122.90
8	A	1107	Y01	CAK-CAI-CAZ	-5.86	114.25	125.06
7	A	1106	AGS	N3-C2-N1	-5.66	119.83	128.68
8	A	1107	Y01	CAV-CAZ-CBH	-5.58	109.01	116.42
8	C	1501	Y01	CAK-CAI-CAZ	-5.49	114.93	125.06
8	A	1109	Y01	CAK-CAI-CAZ	-5.49	114.94	125.06
8	C	1501	Y01	CAD-CBH-CBF	-5.41	105.23	111.68
8	C	1501	Y01	CBI-CBE-CBB	-5.41	111.01	119.49
8	A	1109	Y01	CAV-CAZ-CAI	-5.30	112.97	120.61
8	C	1501	Y01	CAV-CAZ-CAI	-5.17	113.15	120.61
8	A	1109	Y01	CAD-CBH-CBF	-5.07	105.64	111.68
8	A	1108	Y01	CAV-CAZ-CAI	-4.92	113.52	120.61
8	A	1108	Y01	CBI-CBE-CBB	-4.73	112.08	119.49
8	B	401	Y01	CBI-CBE-CBB	-4.60	112.28	119.49
8	A	1110	Y01	CBI-CBE-CBB	-4.58	112.31	119.49
8	A	1110	Y01	CAD-CBH-CBF	-4.57	106.23	111.68
8	B	401	Y01	CAD-CBH-CBF	-4.57	106.23	111.68
8	A	1109	Y01	CBI-CBE-CBB	-4.56	112.35	119.49
8	A	1107	Y01	CAV-CAZ-CAI	-4.51	114.11	120.61
8	A	1108	Y01	OAW-CAY-CAM	4.29	120.74	111.50
8	A	1107	Y01	OAW-CAY-CAM	4.25	120.66	111.50
9	B	402	PC1	O21-C21-C22	4.11	120.36	111.50
8	B	401	Y01	CAV-CAZ-CAI	-4.10	114.70	120.61
8	A	1110	Y01	CAV-CAZ-CAI	-4.10	114.70	120.61
8	A	1109	Y01	OAW-CAY-CAM	3.97	120.05	111.50
8	A	1110	Y01	OAW-CAY-CAM	3.96	120.04	111.50
8	A	1107	Y01	CBI-CBE-CBB	-3.96	113.29	119.49
8	B	401	Y01	OAW-CAY-CAM	3.93	119.98	111.50
9	A	1111	PC1	O21-C21-C22	3.93	119.96	111.50
8	C	1501	Y01	OAW-CAY-CAM	3.92	119.95	111.50
8	A	1110	Y01	CBG-CBI-CBE	3.60	104.34	100.07
8	B	401	Y01	CBG-CBI-CBE	3.59	104.33	100.07

Continued on next page...

Continued from previous page...

Mol	Chain	Res	Type	Atoms	Z	Observed(°)	Ideal(°)
8	C	1501	Y01	CBG-CBI-CBE	3.59	104.33	100.07
8	A	1107	Y01	CAT-CAR-CBC	3.58	116.43	110.33
8	A	1108	Y01	CAV-CAZ-CBH	-3.58	111.67	116.42
8	A	1109	Y01	CBG-CBI-CBE	3.55	104.28	100.07
8	C	1501	Y01	CAV-CAZ-CBH	-3.51	111.75	116.42
8	A	1107	Y01	CAT-CBH-CAZ	3.44	115.06	108.75
8	A	1108	Y01	CAT-CBH-CBF	3.43	113.52	108.73
8	A	1108	Y01	CBG-CBI-CBE	3.32	104.00	100.07
8	A	1108	Y01	CAD-CBH-CAT	-3.28	104.25	109.43
8	B	401	Y01	CAT-CBH-CBF	3.27	113.30	108.73
8	A	1108	Y01	CBF-CBD-CBG	3.27	113.47	109.09
8	A	1110	Y01	CAT-CBH-CBF	3.23	113.23	108.73
8	C	1501	Y01	CAT-CBH-CAZ	3.12	114.47	108.75
8	B	401	Y01	CBF-CBD-CBG	3.07	113.20	109.09
8	A	1110	Y01	CBF-CBD-CBG	3.03	113.14	109.09
8	C	1501	Y01	CAT-CBH-CBF	3.02	112.94	108.73
8	A	1107	Y01	CBG-CBI-CBE	3.01	103.64	100.07
8	A	1109	Y01	CAT-CBH-CBF	3.00	112.92	108.73
8	A	1109	Y01	CAV-CAZ-CBH	-2.93	112.53	116.42
8	A	1107	Y01	CAR-CBC-CAV	2.88	115.28	110.99
8	A	1108	Y01	CAD-CBH-CAZ	-2.75	103.90	108.34
8	A	1107	Y01	CAU-CBI-CBG	2.74	111.52	107.27
9	B	402	PC1	O31-C31-C32	2.66	120.25	111.91
8	A	1109	Y01	CAU-CBI-CBG	2.65	111.38	107.27
8	B	401	Y01	CAV-CAZ-CBH	-2.61	112.95	116.42
9	A	1111	PC1	O31-C31-C32	2.59	120.04	111.91
8	A	1110	Y01	CAV-CAZ-CBH	-2.53	113.06	116.42
8	A	1109	Y01	CBF-CBD-CBG	2.51	112.45	109.09
8	A	1107	Y01	CAK-CBD-CBF	2.50	112.75	109.71
8	A	1110	Y01	CAD-CBH-CAT	-2.46	105.54	109.43
8	B	401	Y01	CAD-CBH-CAT	-2.46	105.55	109.43
8	A	1110	Y01	CAU-CBI-CBG	2.44	111.06	107.27
8	A	1109	Y01	CAD-CBH-CAT	-2.43	105.60	109.43
8	B	401	Y01	CAU-CBI-CBG	2.41	111.00	107.27
8	B	401	Y01	CAT-CBH-CAZ	2.40	113.16	108.75
8	A	1110	Y01	CAT-CBH-CAZ	2.40	113.14	108.75
8	A	1109	Y01	CAT-CBH-CAZ	2.38	113.11	108.75
7	A	1106	AGS	PA-O3A-PB	-2.37	124.70	132.83
8	C	1501	Y01	CBC-CAV-CAZ	2.37	115.19	111.52
8	A	1110	Y01	CAK-CBD-CBF	2.36	112.57	109.71
7	A	1106	AGS	C3'-C2'-C1'	2.36	104.53	100.98
8	C	1501	Y01	CBF-CBD-CBG	2.33	112.22	109.09

Continued on next page...

Continued from previous page...

Mol	Chain	Res	Type	Atoms	Z	Observed(°)	Ideal(°)
8	B	401	Y01	CAK-CBD-CBF	2.31	112.51	109.71
9	B	402	PC1	O12-P-O14	-2.28	100.96	112.24
10	B	403	NAG	C1-O5-C5	2.26	115.25	112.19
8	C	1501	Y01	CAS-CBF-CBH	-2.25	110.12	113.08
9	A	1111	PC1	O12-P-O14	-2.23	101.20	112.24
8	A	1109	Y01	CBF-CBH-CAZ	2.15	113.02	109.65
8	C	1501	Y01	CAU-CBI-CBG	2.14	110.59	107.27
8	A	1108	Y01	CAU-CBI-CBG	2.13	110.58	107.27
8	A	1108	Y01	CAJ-CAO-CBB	-2.09	109.03	115.03
8	A	1110	Y01	CAS-CBF-CBH	-2.08	110.33	113.08
8	C	1501	Y01	CAM-CAL-CAX	-2.07	109.14	113.60
8	C	1501	Y01	CBI-CBG-CBD	-2.07	111.32	114.38
8	A	1107	Y01	CBI-CBG-CBD	-2.05	111.35	114.38
8	B	401	Y01	CAS-CBF-CBH	-2.02	110.42	113.08

All (29) chirality outliers are listed below:

Mol	Chain	Res	Type	Atom
8	A	1107	Y01	CBD
8	A	1107	Y01	CBI
8	A	1107	Y01	CBF
8	A	1107	Y01	CBB
8	A	1108	Y01	CBI
8	A	1108	Y01	CBB
8	A	1108	Y01	CBH
8	A	1108	Y01	CBD
8	A	1108	Y01	CBF
8	A	1109	Y01	CBI
8	A	1109	Y01	CBB
8	A	1109	Y01	CBH
8	A	1109	Y01	CBD
8	A	1109	Y01	CBF
8	A	1110	Y01	CBI
8	A	1110	Y01	CBB
8	A	1110	Y01	CBH
8	A	1110	Y01	CBD
8	A	1110	Y01	CBF
8	B	401	Y01	CBI
8	B	401	Y01	CBB
8	B	401	Y01	CBH
8	B	401	Y01	CBD
8	B	401	Y01	CBF

Continued on next page...

Continued from previous page...

Mol	Chain	Res	Type	Atom
8	C	1501	Y01	CBI
8	C	1501	Y01	CBB
8	C	1501	Y01	CBH
8	C	1501	Y01	CBD
8	C	1501	Y01	CBF

All (153) torsion outliers are listed below:

Mol	Chain	Res	Type	Atoms
8	A	1107	Y01	OAG-CAY-OAW-CBC
8	A	1107	Y01	CAM-CAY-OAW-CBC
8	A	1110	Y01	OAG-CAY-OAW-CBC
8	A	1110	Y01	CAM-CAY-OAW-CBC
8	B	401	Y01	OAG-CAY-OAW-CBC
8	B	401	Y01	CAM-CAY-OAW-CBC
8	C	1501	Y01	OAG-CAY-OAW-CBC
9	A	1111	PC1	C11-O13-P-O12
9	A	1111	PC1	C1-O11-P-O14
9	A	1111	PC1	C1-O11-P-O13
9	A	1111	PC1	C12-C11-O13-P
9	B	402	PC1	O13-C11-C12-N
8	C	1501	Y01	CAJ-CAO-CBB-CBE
8	C	1501	Y01	CAM-CAY-OAW-CBC
8	C	1501	Y01	CAC-CBB-CBE-CAP
8	C	1501	Y01	CAO-CBB-CBE-CAP
8	A	1109	Y01	CAC-CBB-CBE-CAP
8	A	1110	Y01	CAC-CBB-CBE-CAP
8	B	401	Y01	CAC-CBB-CBE-CAP
10	B	403	NAG	O5-C5-C6-O6
9	B	402	PC1	C22-C21-O21-C2
8	A	1108	Y01	CAO-CBB-CBE-CAP
8	A	1109	Y01	CAO-CBB-CBE-CAP
8	A	1110	Y01	CAO-CBB-CBE-CAP
8	B	401	Y01	CAO-CBB-CBE-CAP
8	A	1107	Y01	CAO-CBB-CBE-CAP
9	B	402	PC1	O22-C21-O21-C2
8	A	1107	Y01	CAC-CBB-CBE-CAP
8	A	1108	Y01	CAC-CBB-CBE-CAP
9	B	402	PC1	C31-C32-C33-C34
8	A	1108	Y01	CAJ-CAO-CBB-CBE
8	A	1109	Y01	CAO-CAJ-CAN-CBA
8	A	1108	Y01	CAJ-CAO-CBB-CAC

Continued on next page...

Continued from previous page...

Mol	Chain	Res	Type	Atoms
8	C	1501	Y01	CAN-CAJ-CAO-CBB
8	B	401	Y01	CAO-CAJ-CAN-CBA
10	B	403	NAG	C4-C5-C6-O6
8	A	1107	Y01	CAJ-CAO-CBB-CBE
9	A	1111	PC1	C31-C32-C33-C34
8	C	1501	Y01	CAV-CBC-OAW-CAY
8	A	1107	Y01	CAJ-CAO-CBB-CAC
8	A	1108	Y01	CAO-CAJ-CAN-CBA
8	A	1109	Y01	CAM-CAY-OAW-CBC
9	A	1111	PC1	C11-O13-P-O11
9	A	1111	PC1	C32-C31-O31-C3
8	A	1109	Y01	OAG-CAY-OAW-CBC
9	A	1111	PC1	C3A-C3B-C3C-C3D
9	B	402	PC1	C37-C38-C39-C3A
9	B	402	PC1	C32-C31-O31-C3
9	A	1111	PC1	C36-C37-C38-C39
9	A	1111	PC1	C3C-C3D-C3E-C3F
9	B	402	PC1	C28-C29-C2A-C2B
9	A	1111	PC1	C37-C38-C39-C3A
9	B	402	PC1	C27-C28-C29-C2A
8	C	1501	Y01	CAJ-CAN-CBA-CAA
9	A	1111	PC1	C38-C39-C3A-C3B
9	A	1111	PC1	C3B-C3C-C3D-C3E
9	A	1111	PC1	C35-C36-C37-C38
9	A	1111	PC1	C39-C3A-C3B-C3C
9	A	1111	PC1	O32-C31-O31-C3
8	A	1108	Y01	CAM-CAY-OAW-CBC
9	A	1111	PC1	C22-C21-O21-C2
9	B	402	PC1	C2-C3-O31-C31
9	B	402	PC1	O32-C31-O31-C3
8	C	1501	Y01	CAJ-CAN-CBA-CAB
9	B	402	PC1	C2B-C2C-C2D-C2E
8	A	1108	Y01	OAG-CAY-OAW-CBC
9	A	1111	PC1	O22-C21-O21-C2
9	B	402	PC1	C25-C26-C27-C28
9	A	1111	PC1	C29-C2A-C2B-C2C
8	C	1501	Y01	CAO-CBB-CBE-CBI
9	B	402	PC1	C2E-C2F-C2G-C2H
8	A	1109	Y01	CAJ-CAN-CBA-CAA
9	B	402	PC1	C3A-C3B-C3C-C3D
8	A	1110	Y01	CAN-CAJ-CAO-CBB
8	C	1501	Y01	CAC-CBB-CBE-CBI

Continued on next page...

Continued from previous page...

Mol	Chain	Res	Type	Atoms
9	B	402	PC1	C23-C24-C25-C26
8	A	1108	Y01	CAX-CAL-CAM-CAY
8	A	1109	Y01	CAX-CAL-CAM-CAY
9	B	402	PC1	C32-C33-C34-C35
8	C	1501	Y01	CAR-CBC-OAW-CAY
8	A	1109	Y01	CAJ-CAN-CBA-CAB
9	B	402	PC1	C22-C23-C24-C25
9	B	402	PC1	C35-C36-C37-C38
9	B	402	PC1	C1-C2-C3-O31
9	A	1111	PC1	C2E-C2F-C2G-C2H
8	A	1107	Y01	CAJ-CAN-CBA-CAB
9	A	1111	PC1	C2A-C2B-C2C-C2D
9	B	402	PC1	C2D-C2E-C2F-C2G
9	A	1111	PC1	C2F-C2G-C2H-C2I
8	A	1107	Y01	CAJ-CAN-CBA-CAA
9	B	402	PC1	C3F-C3G-C3H-C3I
8	A	1108	Y01	CAC-CBB-CBE-CBI
8	A	1109	Y01	CAC-CBB-CBE-CBI
8	A	1110	Y01	CAC-CBB-CBE-CBI
8	B	401	Y01	CAC-CBB-CBE-CBI
9	B	402	PC1	O21-C2-C3-O31
9	A	1111	PC1	C21-C22-C23-C24
9	A	1111	PC1	C28-C29-C2A-C2B
9	B	402	PC1	O11-C1-C2-O21
8	A	1108	Y01	CAO-CBB-CBE-CBI
8	A	1109	Y01	CAO-CBB-CBE-CBI
8	A	1110	Y01	CAO-CBB-CBE-CBI
8	B	401	Y01	CAO-CBB-CBE-CBI
8	A	1109	Y01	CAN-CAJ-CAO-CBB
9	B	402	PC1	C2-C1-O11-P
9	B	402	PC1	C39-C3A-C3B-C3C
8	C	1501	Y01	CAJ-CAO-CBB-CAC
8	A	1107	Y01	CAC-CBB-CBE-CBI
9	A	1111	PC1	C2-C1-O11-P
8	C	1501	Y01	CAO-CAJ-CAN-CBA
9	A	1111	PC1	C23-C24-C25-C26
9	B	402	PC1	C3C-C3D-C3E-C3F
9	A	1111	PC1	C11-O13-P-O14
9	A	1111	PC1	C24-C25-C26-C27
9	B	402	PC1	C29-C2A-C2B-C2C
9	A	1111	PC1	O13-C11-C12-N
9	A	1111	PC1	C3E-C3F-C3G-C3H

Continued on next page...

Continued from previous page...

Mol	Chain	Res	Type	Atoms
8	A	1110	Y01	CAO-CAJ-CAN-CBA
9	B	402	PC1	C3-C2-O21-C21
8	A	1107	Y01	CAO-CBB-CBE-CBI
9	A	1111	PC1	C25-C26-C27-C28
9	B	402	PC1	C1-O11-P-O13
9	A	1111	PC1	C32-C33-C34-C35
7	A	1106	AGS	C4'-C5'-O5'-PA
8	A	1110	Y01	CAJ-CAO-CBB-CAC
9	A	1111	PC1	O11-C1-C2-C3
8	A	1107	Y01	CAO-CAJ-CAN-CBA
8	A	1107	Y01	CAM-CAL-CAX-OAF
9	B	402	PC1	C1-C2-O21-C21
8	A	1107	Y01	CAM-CAL-CAX-OAH
8	B	401	Y01	CAM-CAL-CAX-OAH
7	A	1106	AGS	PA-O3A-PB-O1B
9	B	402	PC1	C38-C39-C3A-C3B
9	B	402	PC1	O11-C1-C2-C3
8	B	401	Y01	CAM-CAL-CAX-OAF
8	B	401	Y01	CAL-CAM-CAY-OAW
9	B	402	PC1	C2F-C2G-C2H-C2I
9	A	1111	PC1	C33-C34-C35-C36
8	A	1110	Y01	CAX-CAL-CAM-CAY
8	C	1501	Y01	CAX-CAL-CAM-CAY
8	A	1108	Y01	CAM-CAL-CAX-OAH
7	A	1106	AGS	PA-O3A-PB-O2B
8	C	1501	Y01	CAL-CAM-CAY-OAW
9	B	402	PC1	C24-C25-C26-C27
9	A	1111	PC1	C2B-C2C-C2D-C2E
8	B	401	Y01	CAL-CAM-CAY-OAG
8	A	1108	Y01	CAM-CAL-CAX-OAF
9	B	402	PC1	C12-C11-O13-P
9	A	1111	PC1	O31-C31-C32-C33
9	A	1111	PC1	C2D-C2E-C2F-C2G
8	C	1501	Y01	CAL-CAM-CAY-OAG
9	B	402	PC1	C2A-C2B-C2C-C2D
8	A	1109	Y01	CAL-CAM-CAY-OAW

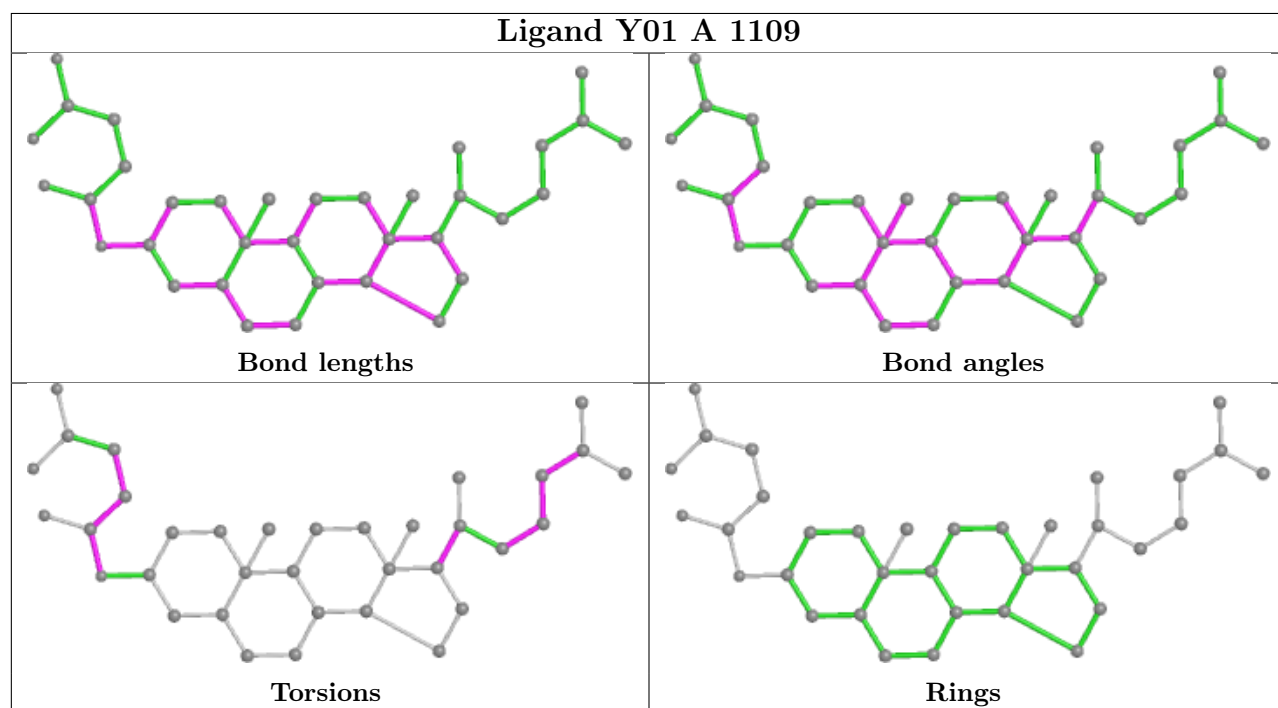
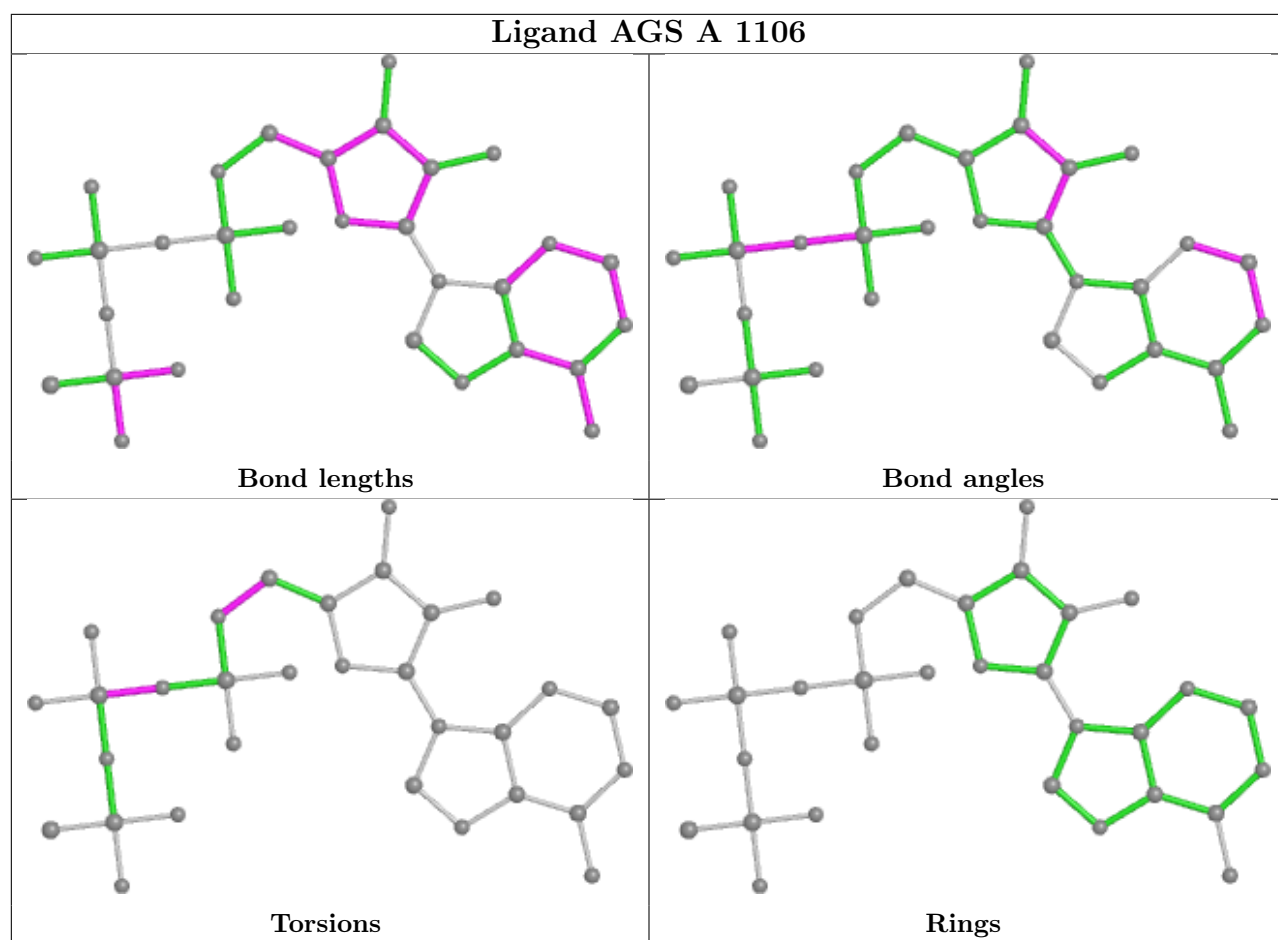
All (2) ring outliers are listed below:

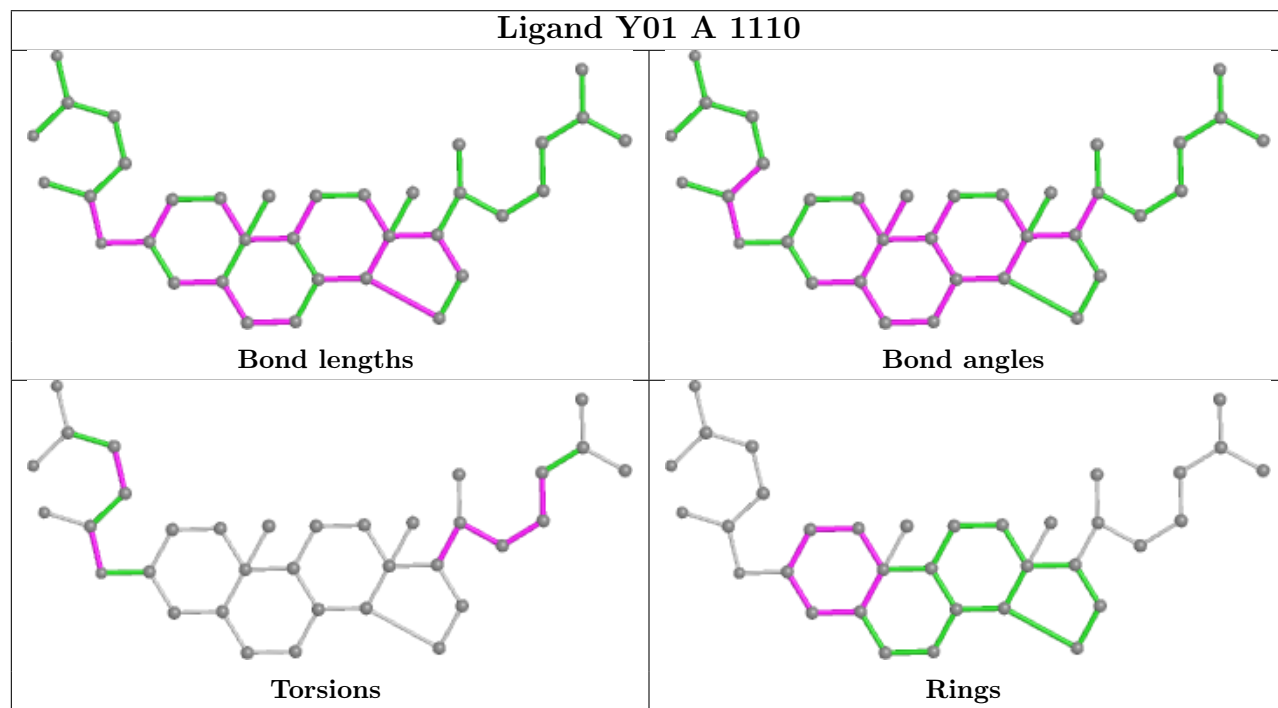
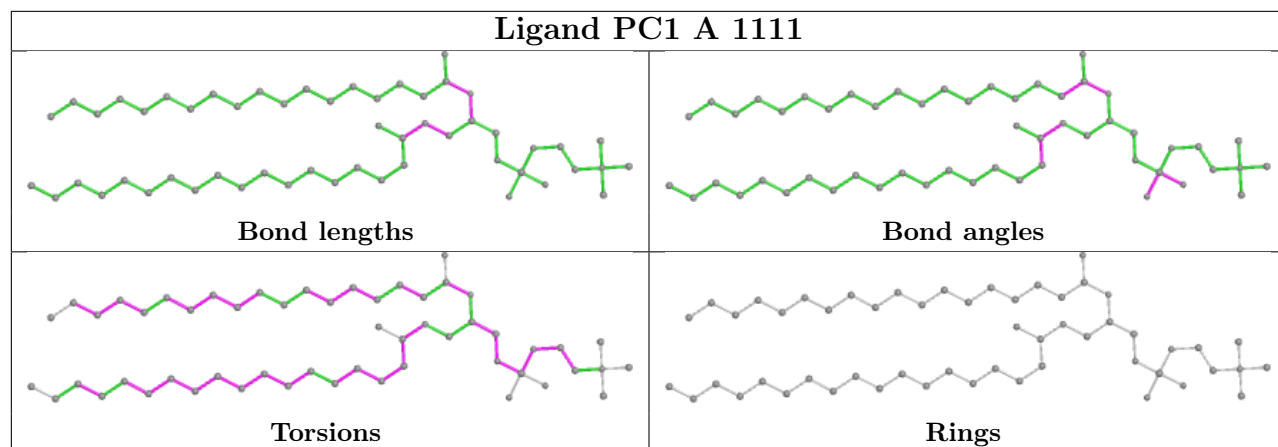
Mol	Chain	Res	Type	Atoms
8	A	1110	Y01	CAR-CAT-CAV-CAZ-CBC-CBH
8	B	401	Y01	CAR-CAT-CAV-CAZ-CBC-CBH

9 monomers are involved in 193 short contacts:

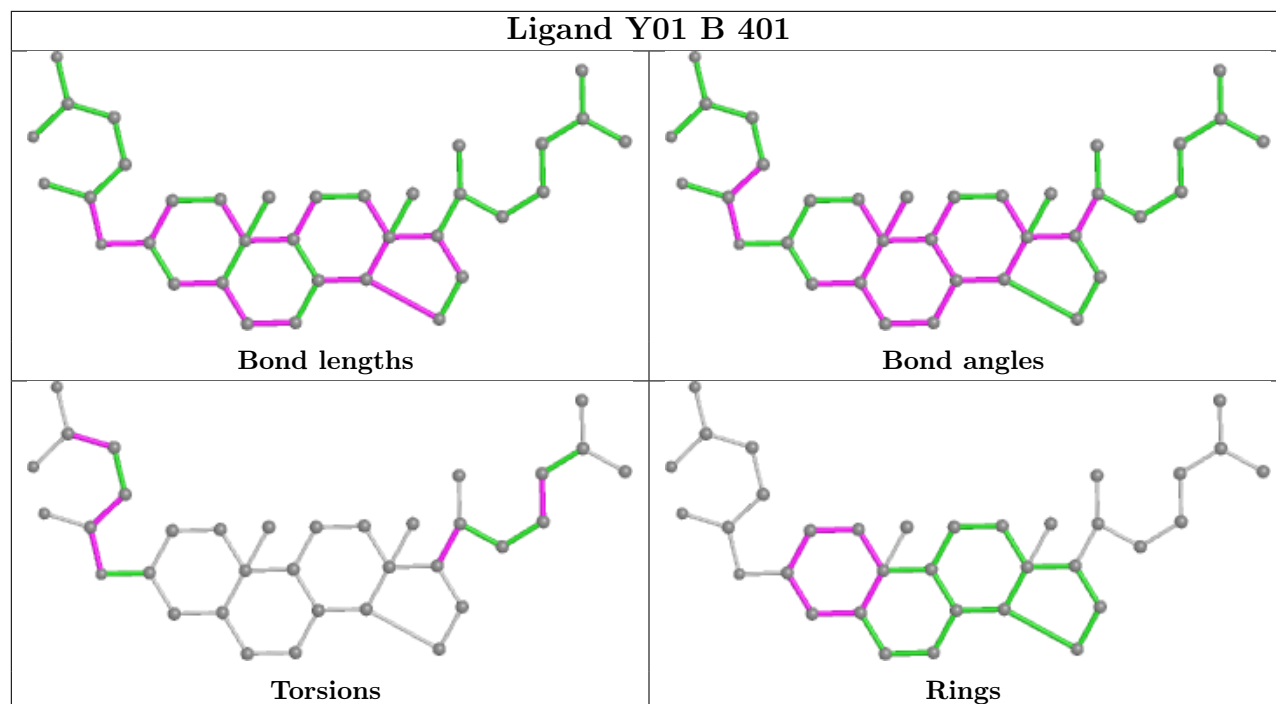
Mol	Chain	Res	Type	Clashes	Symm-Clashes
7	A	1106	AGS	4	0
8	A	1109	Y01	61	0
9	A	1111	PC1	16	0
8	A	1110	Y01	40	0
8	B	401	Y01	58	0
8	A	1107	Y01	19	0
8	A	1108	Y01	8	0
9	B	402	PC1	7	0
8	C	1501	Y01	37	0

The following is a two-dimensional graphical depiction of Mogul quality analysis of bond lengths, bond angles, torsion angles, and ring geometry for all instances of the Ligand of Interest. In addition, ligands with molecular weight > 250 and outliers as shown on the validation Tables will also be included. For torsion angles, if less than 5% of the Mogul distribution of torsion angles is within 10 degrees of the torsion angle in question, then that torsion angle is considered an outlier. Any bond that is central to one or more torsion angles identified as an outlier by Mogul will be highlighted in the graph. For rings, the root-mean-square deviation (RMSD) between the ring in question and similar rings identified by Mogul is calculated over all ring torsion angles. If the average RMSD is greater than 60 degrees and the minimal RMSD between the ring in question and any Mogul-identified rings is also greater than 60 degrees, then that ring is considered an outlier. The outliers are highlighted in purple. The color gray indicates Mogul did not find sufficient equivalents in the CSD to analyse the geometry.

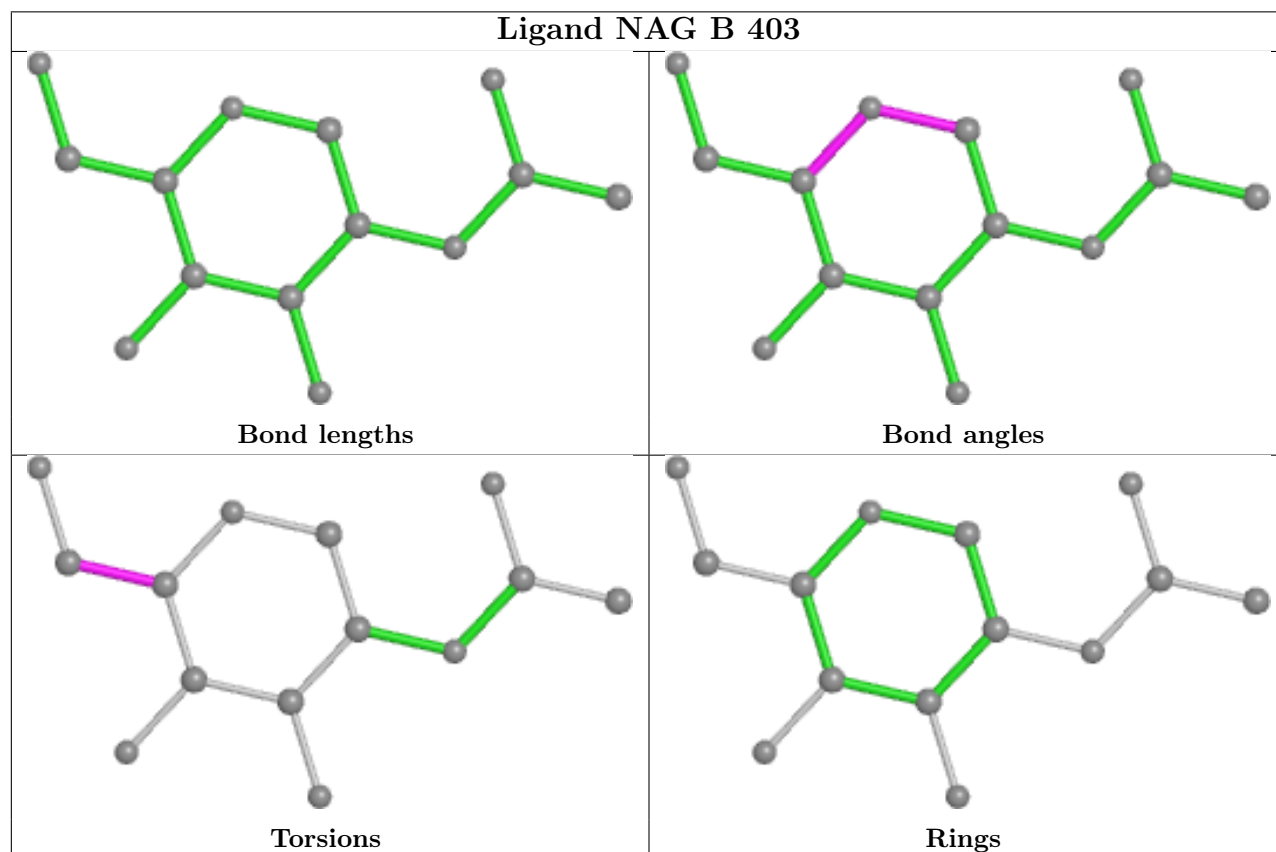


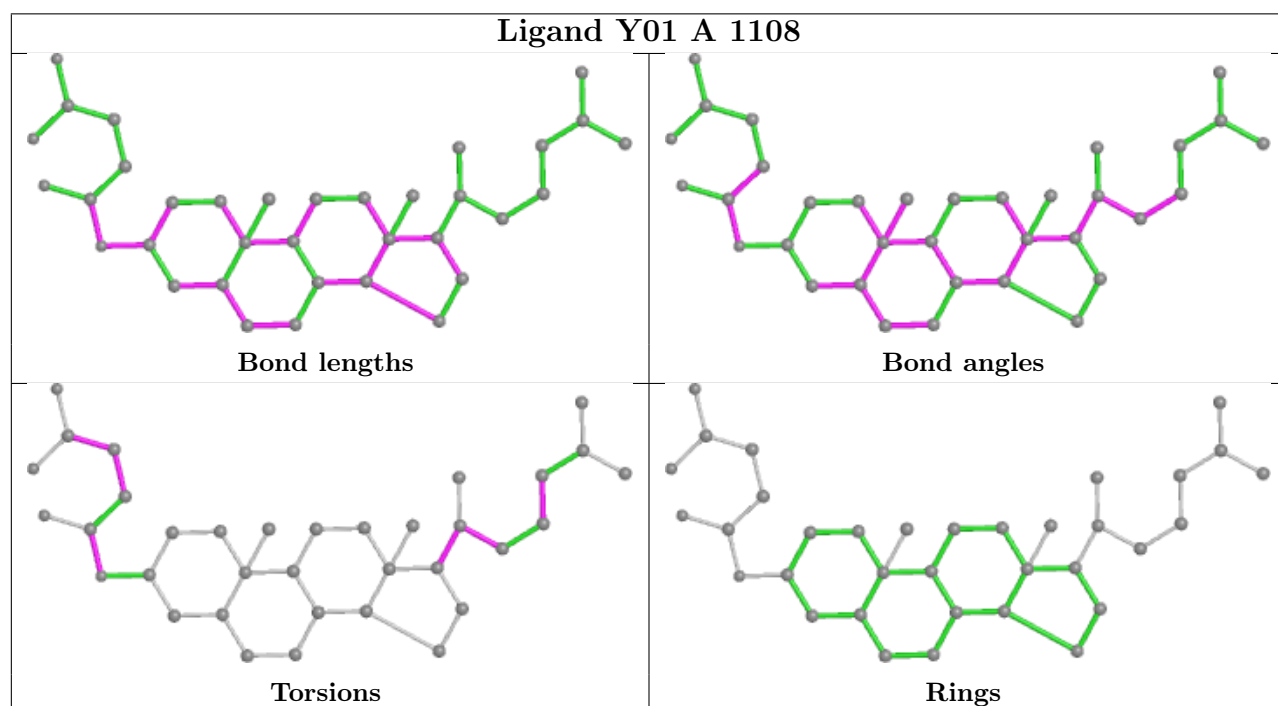
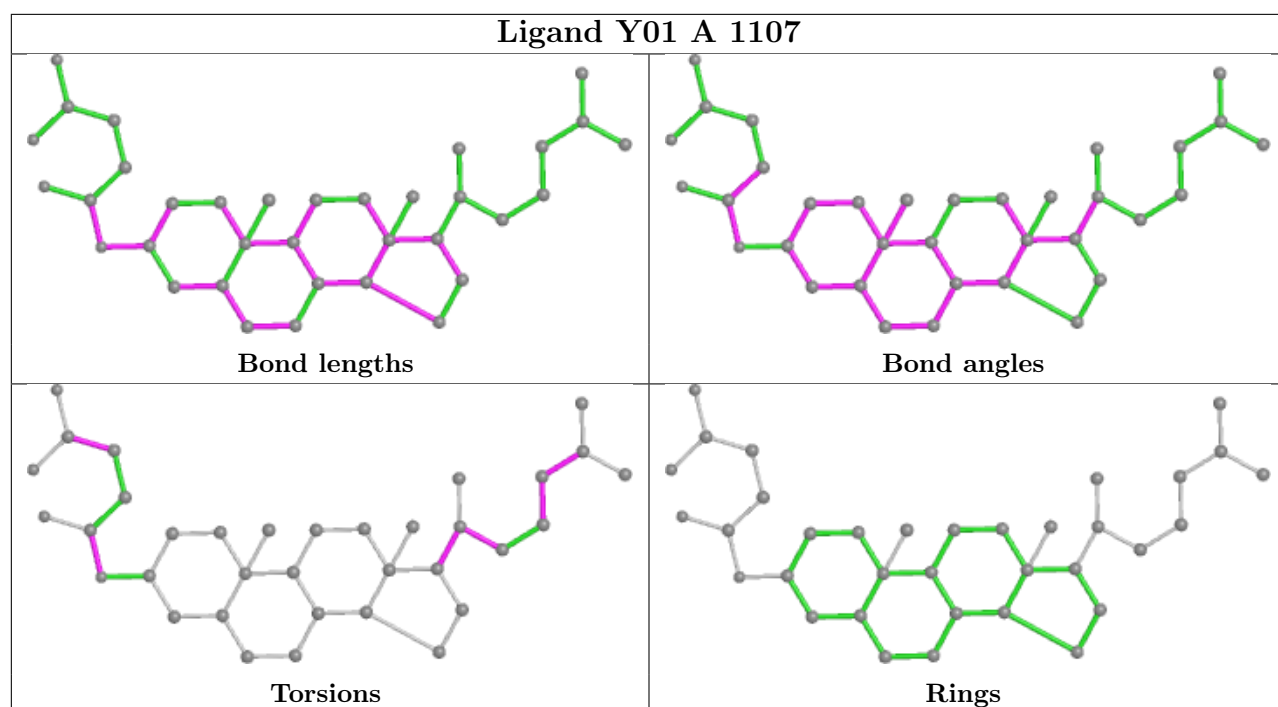


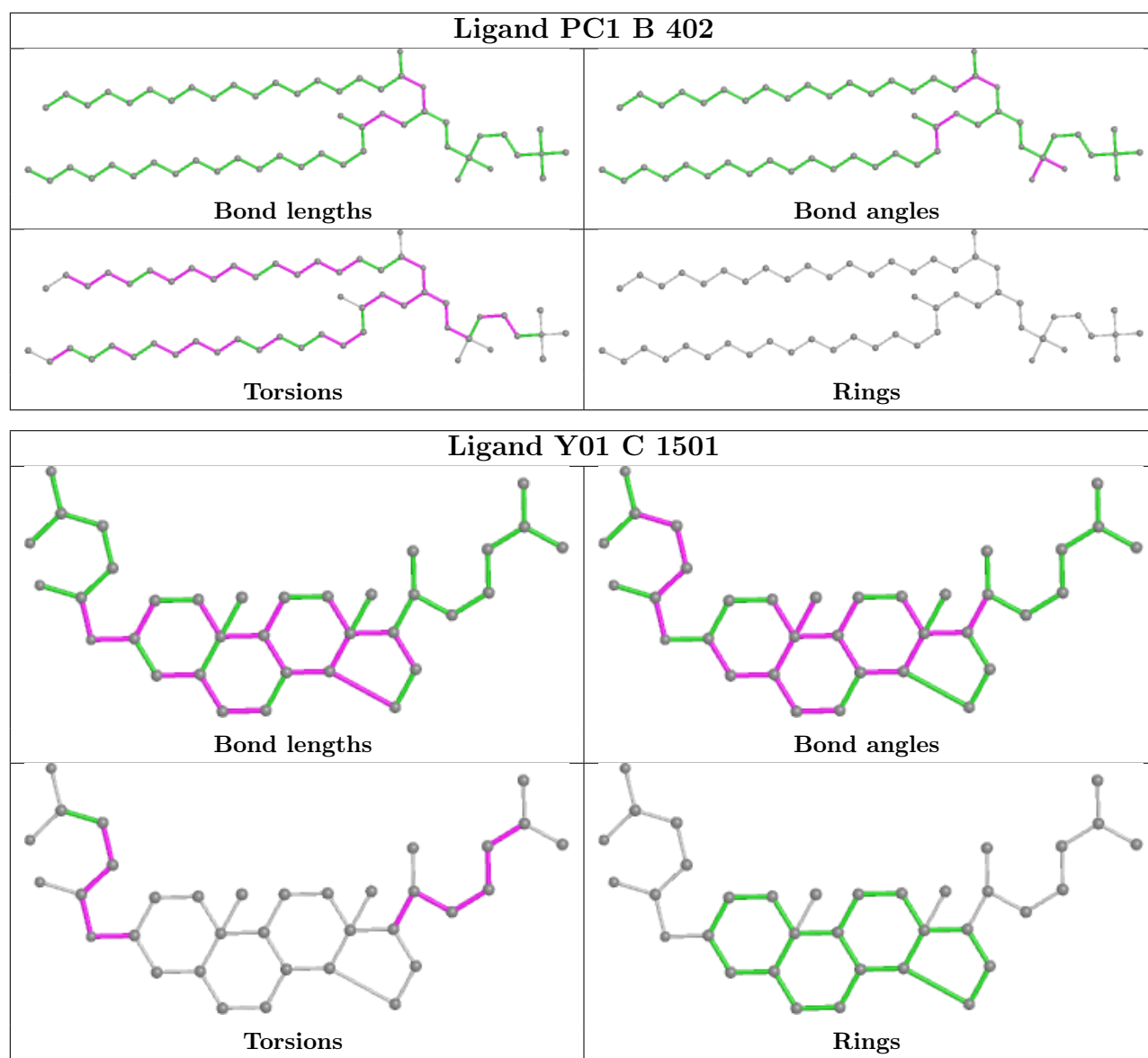
Ligand Y01 B 401



Ligand NAG B 403







5.7 Other polymers [i](#)

There are no such residues in this entry.

5.8 Polymer linkage issues [i](#)

There are no chain breaks in this entry.

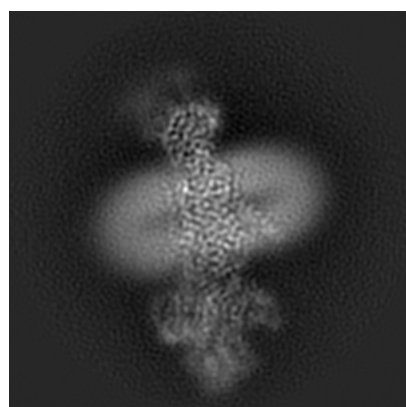
6 Map visualisation [i](#)

This section contains visualisations of the EMDB entry EMD-30949. These allow visual inspection of the internal detail of the map and identification of artifacts.

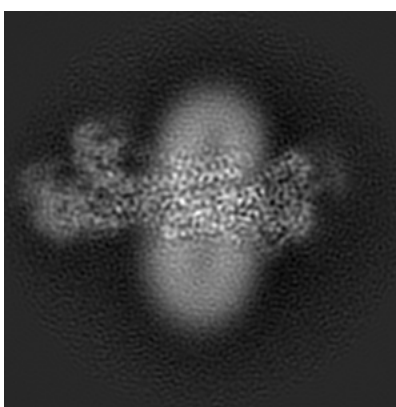
No raw map or half-maps were deposited for this entry and therefore no images, graphs, etc. pertaining to the raw map can be shown.

6.1 Orthogonal projections [i](#)

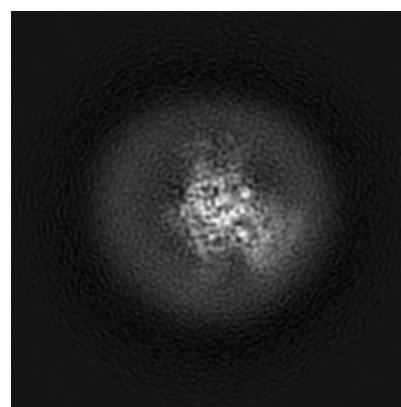
6.1.1 Primary map



X



Y

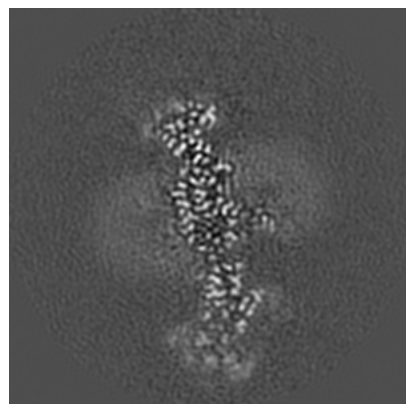


Z

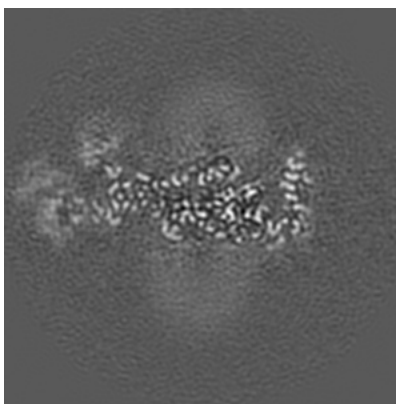
The images above show the map projected in three orthogonal directions.

6.2 Central slices [i](#)

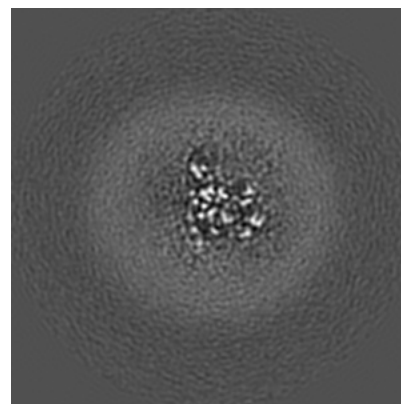
6.2.1 Primary map



X Index: 100



Y Index: 100

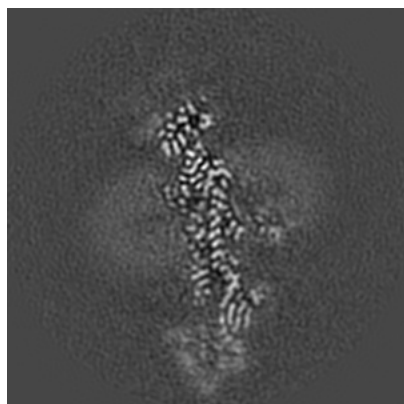


Z Index: 100

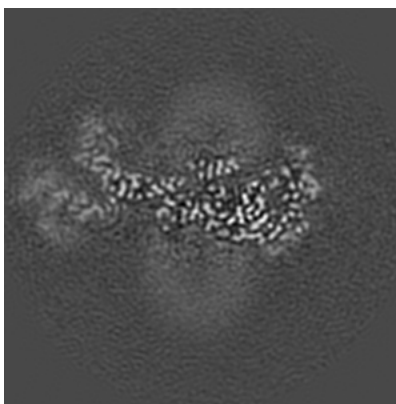
The images above show central slices of the map in three orthogonal directions.

6.3 Largest variance slices [i](#)

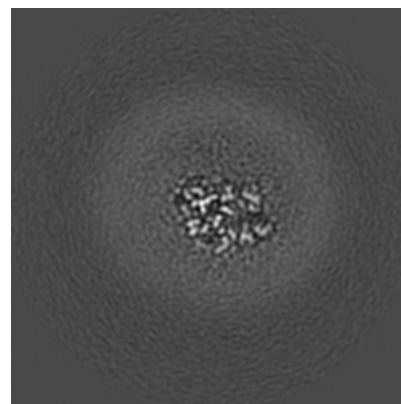
6.3.1 Primary map



X Index: 105



Y Index: 98

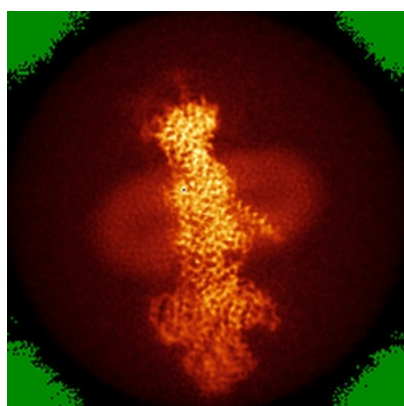


Z Index: 109

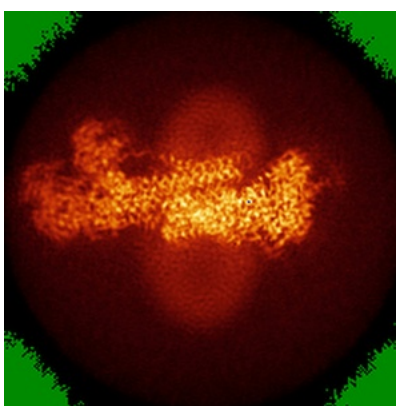
The images above show the largest variance slices of the map in three orthogonal directions.

6.4 Orthogonal standard-deviation projections (False-color) [i](#)

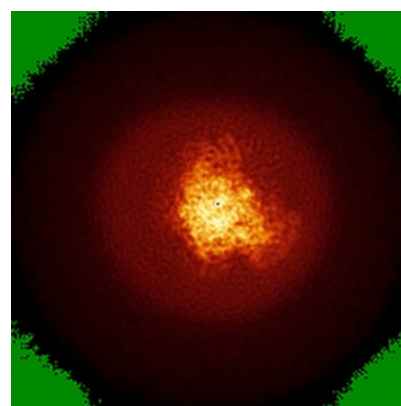
6.4.1 Primary map



X



Y

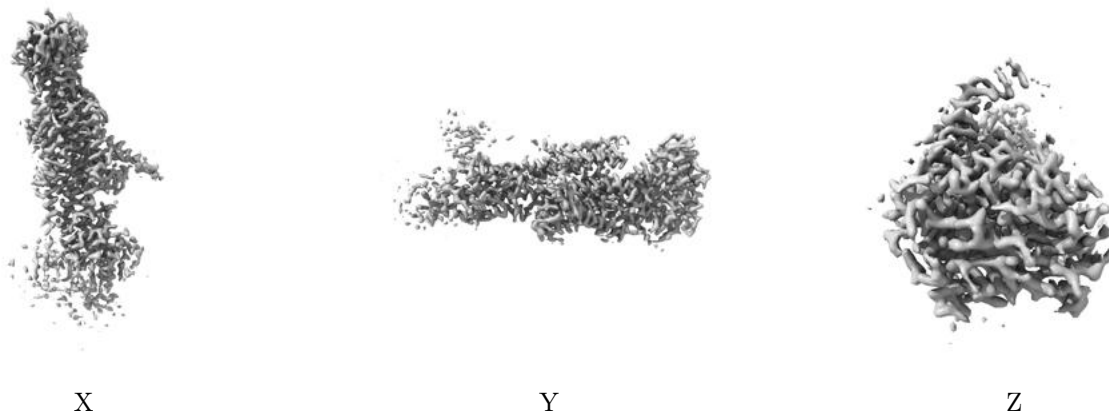


Z

The images above show the map standard deviation projections with false color in three orthogonal directions. Minimum values are shown in green, max in blue, and dark to light orange shades represent small to large values respectively.

6.5 Orthogonal surface views [i](#)

6.5.1 Primary map



The images above show the 3D surface view of the map at the recommended contour level 0.045. These images, in conjunction with the slice images, may facilitate assessment of whether an appropriate contour level has been provided.

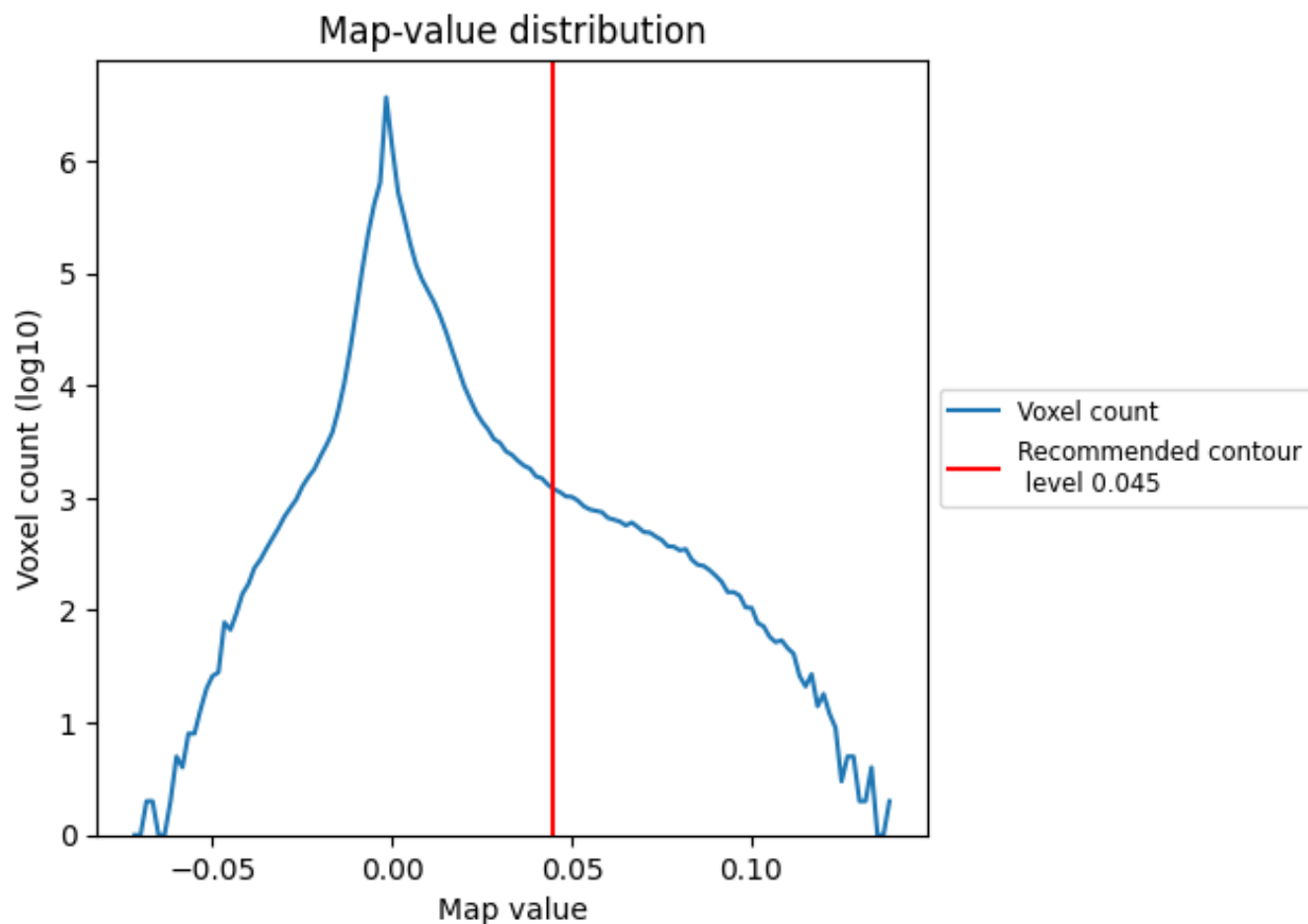
6.6 Mask visualisation [i](#)

This section was not generated. No masks/segmentation were deposited.

7 Map analysis [i](#)

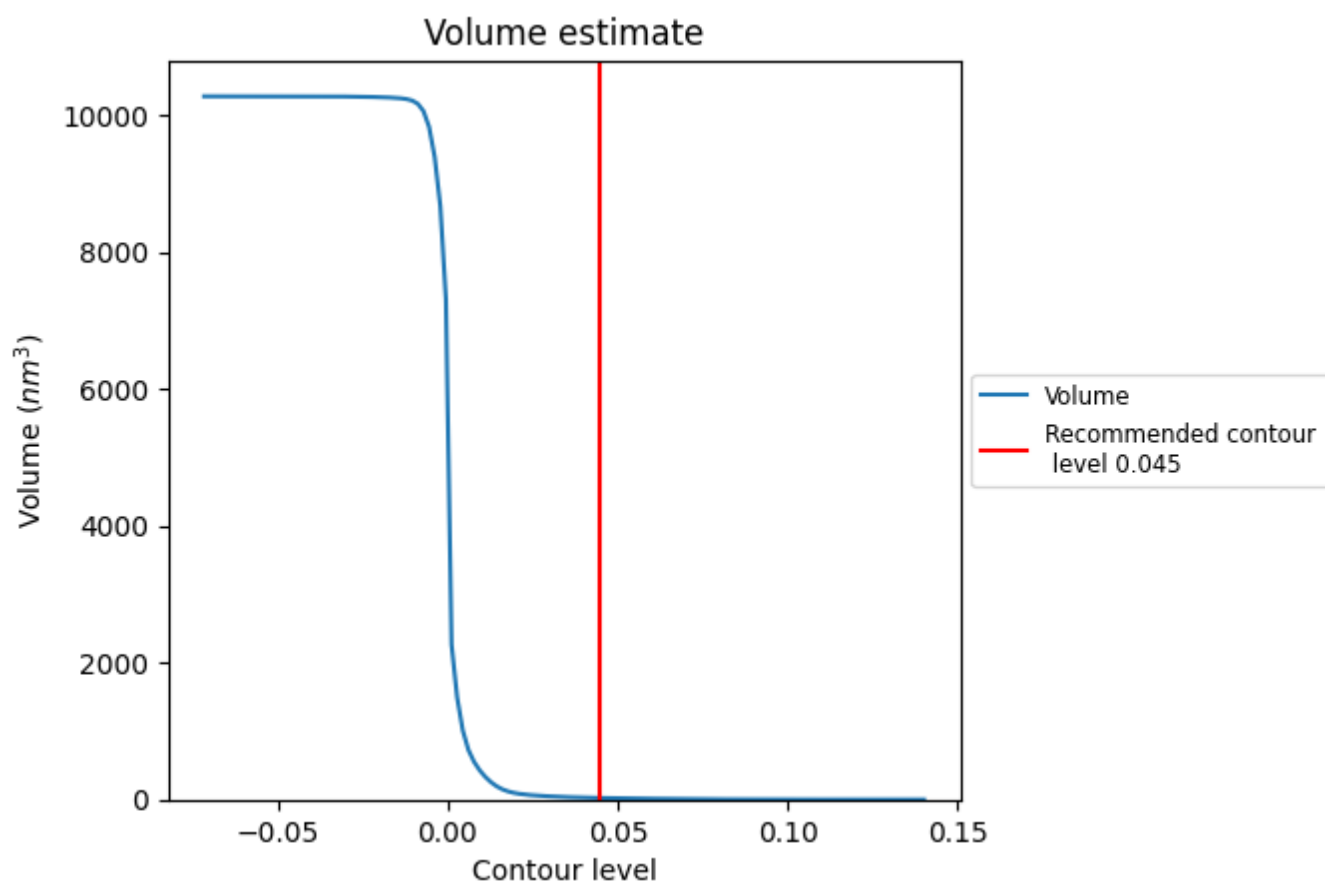
This section contains the results of statistical analysis of the map.

7.1 Map-value distribution [i](#)



The map-value distribution is plotted in 128 intervals along the x-axis. The y-axis is logarithmic. A spike in this graph at zero usually indicates that the volume has been masked.

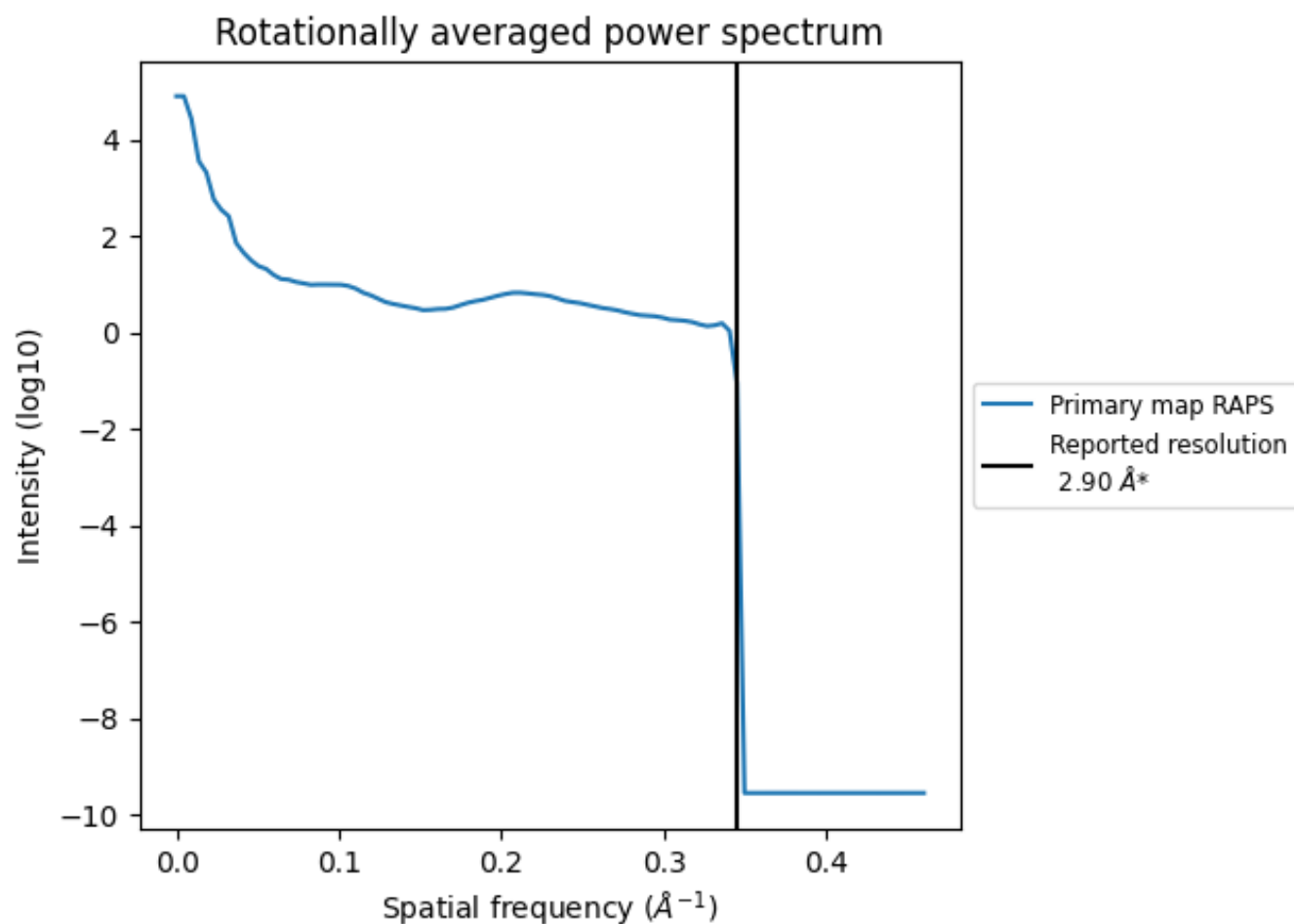
7.2 Volume estimate [i](#)



The volume at the recommended contour level is 23 nm³; this corresponds to an approximate mass of 21 kDa.

The volume estimate graph shows how the enclosed volume varies with the contour level. The recommended contour level is shown as a vertical line and the intersection between the line and the curve gives the volume of the enclosed surface at the given level.

7.3 Rotationally averaged power spectrum ⓘ



*Reported resolution corresponds to spatial frequency of 0.345 Å⁻¹

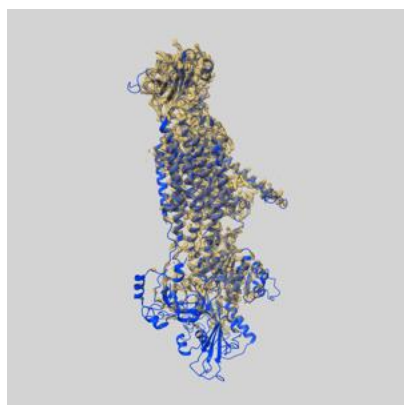
8 Fourier-Shell correlation ⓘ

This section was not generated. No FSC curve or half-maps provided.

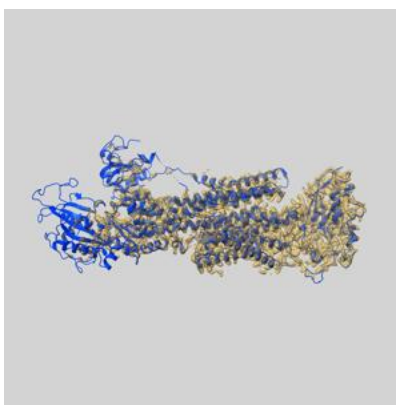
9 Map-model fit [i](#)

This section contains information regarding the fit between EMDB map EMD-30949 and PDB model 7E21. Per-residue inclusion information can be found in section [3](#) on page [9](#).

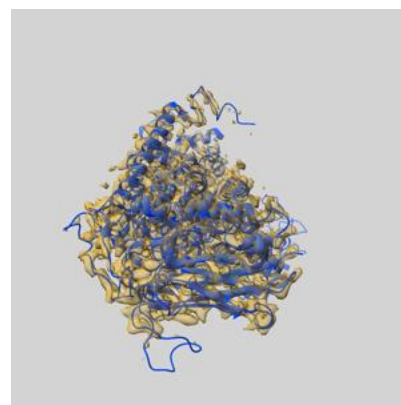
9.1 Map-model overlay [i](#)



X



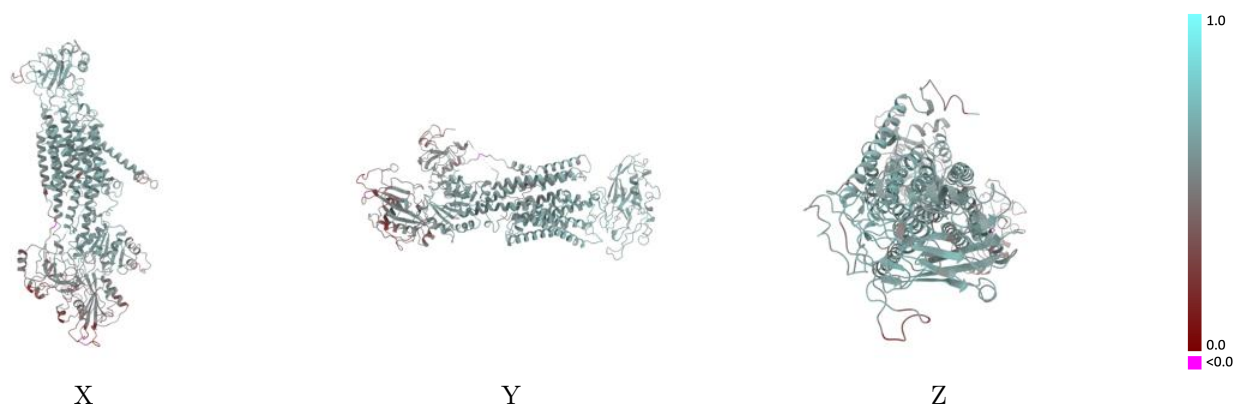
Y



Z

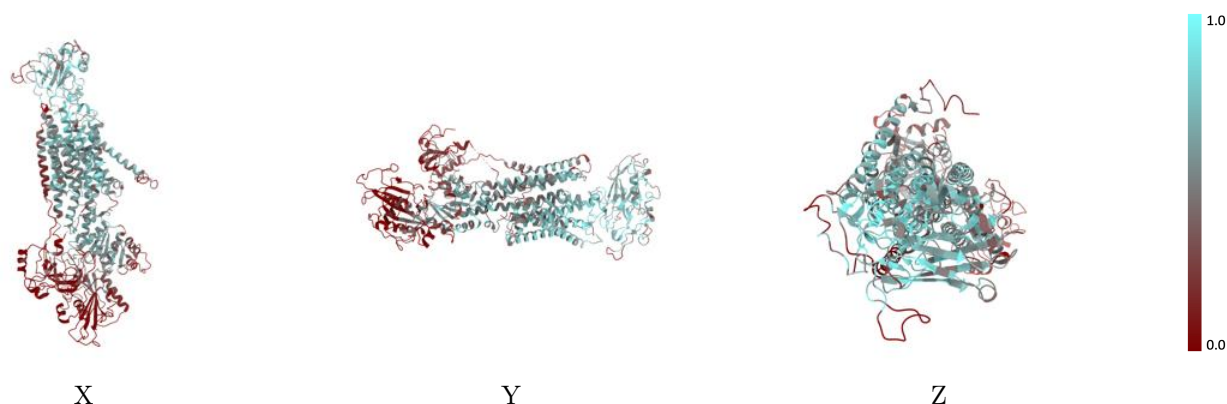
The images above show the 3D surface view of the map at the recommended contour level 0.045 at 50% transparency in yellow overlaid with a ribbon representation of the model coloured in blue. These images allow for the visual assessment of the quality of fit between the atomic model and the map.

9.2 Q-score mapped to coordinate model [i](#)



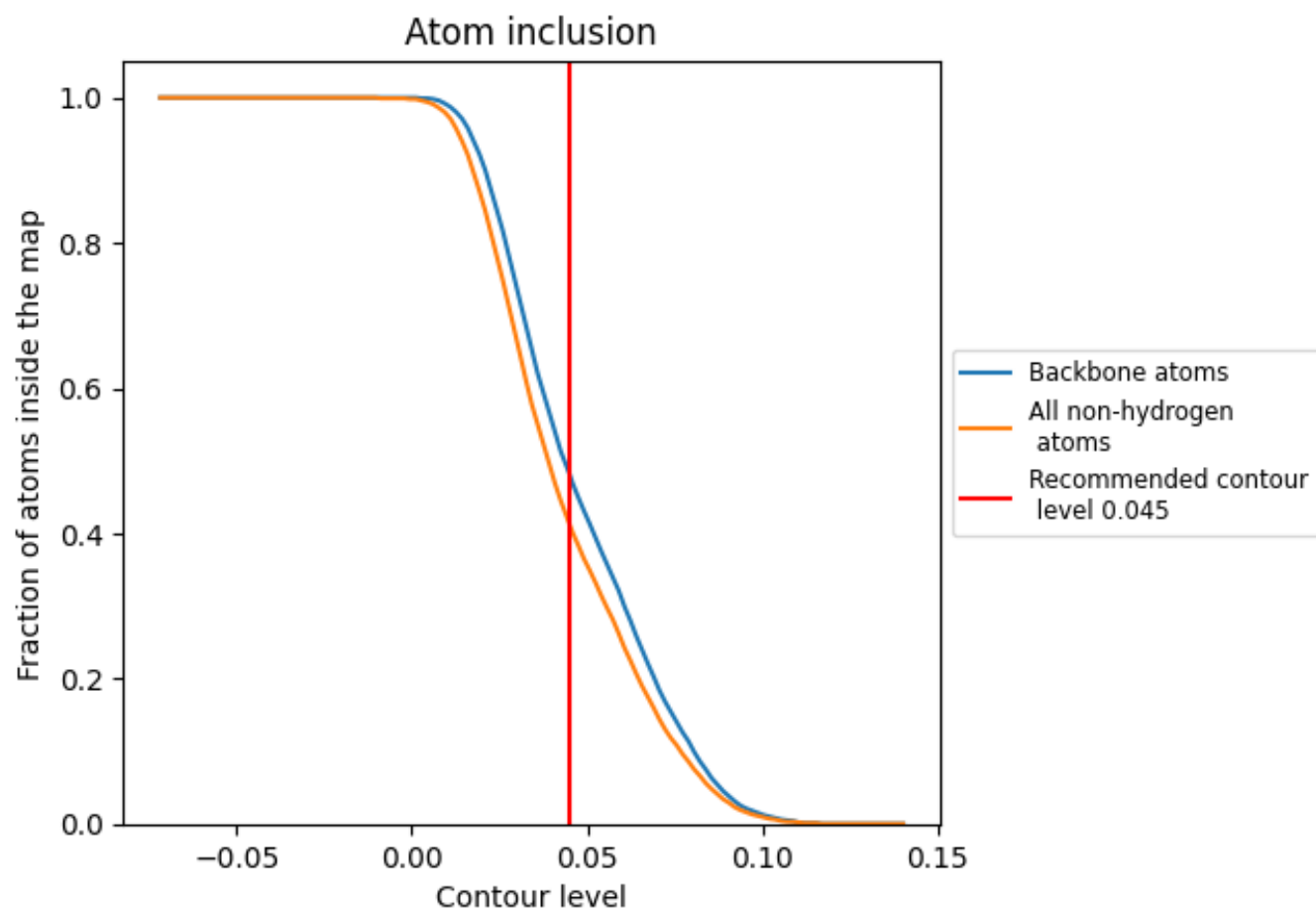
The images above show the model with each residue coloured according to its Q-score. This shows their resolvability in the map with higher Q-score values reflecting better resolvability. Please note: Q-score is calculating the resolvability of atoms, and thus high values are only expected at resolutions at which atoms can be resolved. Low Q-score values may therefore be expected for many entries.

9.3 Atom inclusion mapped to coordinate model [i](#)



The images above show the model with each residue coloured according to its atom inclusion. This shows to what extent they are inside the map at the recommended contour level (0.045).

9.4 Atom inclusion [i](#)



At the recommended contour level, 48% of all backbone atoms, 41% of all non-hydrogen atoms, are inside the map.

9.5 Map-model fit summary ⓘ

The table lists the average atom inclusion at the recommended contour level (0.045) and Q-score for the entire model and for each chain.

Chain	Atom inclusion	Q-score
All	<div></div> 0.4130	<div></div> 0.5350
A	<div></div> 0.3840	<div></div> 0.5270
B	<div></div> 0.5490	<div></div> 0.5620
C	<div></div> 0.1210	<div></div> 0.5290
D	<div></div> 0.0710	<div></div> 0.4630

