



wwPDB X-ray Structure Validation Summary Report ⓘ

Sep 18, 2025 – 02:15 PM EDT

PDB ID : 9E5K / pdb_00009e5k
Title : env2 cobalamin riboswitch aptamer domain in complex with ethynyl-3-methylbenzene-cobalamin
Authors : Olenginski, L.T.; Batey, R.T.
Deposited on : 2024-10-28
Resolution : 1.90 Å(reported)

This is a wwPDB X-ray Structure Validation Summary Report for a publicly released PDB entry.

We welcome your comments at validation@mail.wwpdb.org

A user guide is available at

<https://www.wwpdb.org/validation/2017/XrayValidationReportHelp>

with specific help available everywhere you see the ⓘ symbol.

The types of validation reports are described at

<http://www.wwpdb.org/validation/2017/FAQs#types>.

The following versions of software and data (see [references ⓘ](#)) were used in the production of this report:

MolProbity : 4-5-2 with Phenix2.0rc1
Mogul : 2022.3.0, CSD as543be (2022)
Xtriage (Phenix) : 2.0rc1
EDS : 3.0
buster-report : 1.1.7 (2018)
Percentile statistics : 20231227.v01 (using entries in the PDB archive December 27th 2023)
CCP4 : 9.0.006 (Gargrove)
Density-Fitness : 1.0.12
Ideal geometry (proteins) : Engh & Huber (2001)
Ideal geometry (DNA, RNA) : Parkinson et al. (1996)
Validation Pipeline (wwPDB-VP) : 2.45.1

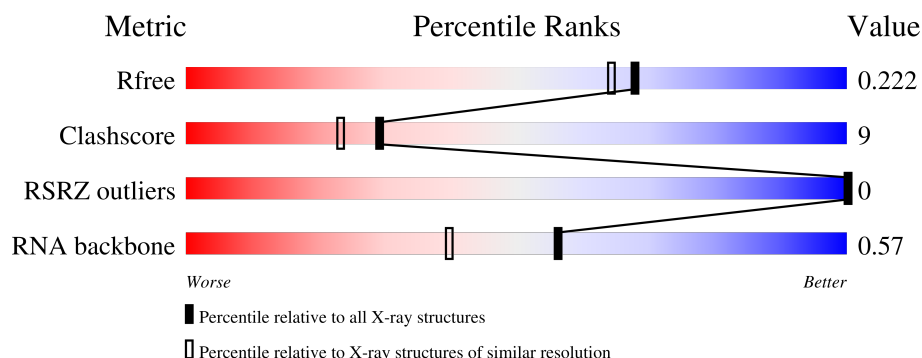
1 Overall quality at a glance ⓘ

The following experimental techniques were used to determine the structure:

X-RAY DIFFRACTION

The reported resolution of this entry is 1.90 Å.

Percentile scores (ranging between 0-100) for global validation metrics of the entry are shown in the following graphic. The table shows the number of entries on which the scores are based.



Metric	Whole archive (#Entries)	Similar resolution (#Entries, resolution range(Å))
R_{free}	164625	7293 (1.90-1.90)
Clashscore	180529	8090 (1.90-1.90)
RSRZ outliers	164620	7292 (1.90-1.90)
RNA backbone	3690	1046 (2.30-1.50)

The table below summarises the geometric issues observed across the polymeric chains and their fit to the electron density. The red, orange, yellow and green segments of the lower bar indicate the fraction of residues that contain outliers for ≥ 3 , 2, 1 and 0 types of geometric quality criteria respectively. A grey segment represents the fraction of residues that are not modelled. The numeric value for each fraction is indicated below the corresponding segment, with a dot representing fractions $\leq 5\%$. The upper red bar (where present) indicates the fraction of residues that have poor fit to the electron density. The numeric value is given above the bar.

Mol	Chain	Length	Quality of chain
1	A	76	
1	B	76	
1	C	76	
1	D	76	

The following table lists non-polymeric compounds, carbohydrate monomers and non-standard residues in protein, DNA, RNA chains that are outliers for geometric or electron-density-fit criteria:

Mol	Type	Chain	Res	Chirality	Geometry	Clashes	Electron density
4	TRS	A	103	-	X	-	-
4	TRS	B	103	-	X	-	-
4	TRS	C	103	-	X	-	-

2 Entry composition [i](#)

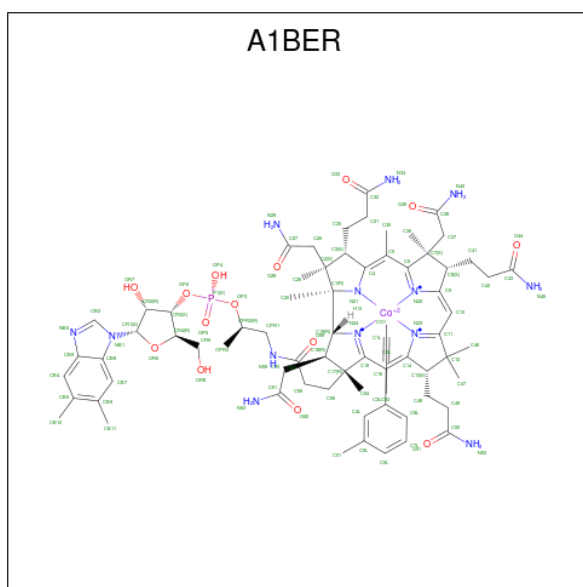
There are 7 unique types of molecules in this entry. The entry contains 7824 atoms, of which 0 are hydrogens and 0 are deuteriums.

In the tables below, the ZeroOcc column contains the number of atoms modelled with zero occupancy, the AltConf column contains the number of residues with at least one atom in alternate conformation and the Trace column contains the number of residues modelled with at most 2 atoms.

- Molecule 1 is a RNA chain called RNA (76-MER).

Mol	Chain	Residues	Atoms					ZeroOcc	AltConf	Trace
1	A	76	Total	C	N	O	P	0	0	0
			1640	730	306	526	78			
1	B	76	Total	C	N	O	P	0	0	0
			1640	730	306	526	78			
1	C	76	Total	C	N	O	P	0	0	0
			1640	730	306	526	78			
1	D	76	Total	C	N	O	P	0	0	0
			1640	730	306	526	78			

- Molecule 2 is ethynyl-3-methylbenzene-cobalamin (CCD ID: A1BER) (formula: $C_{71}H_{96}CoN_{13}O_{14}P$) (labeled as "Ligand of Interest" by depositor).



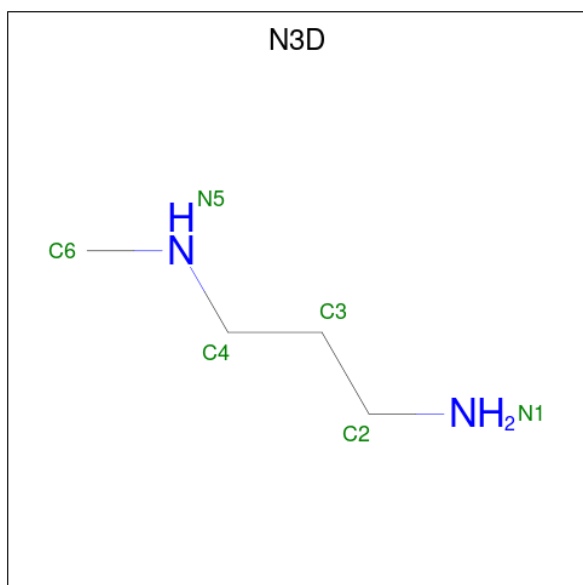
Mol	Chain	Residues	Atoms						ZeroOcc	AltConf
2	A	1	Total	C	Co	N	O	P	0	0
			100	71	1	13	14	1		
2	B	1	Total	C	Co	N	O	P	0	0
			100	71	1	13	14	1		

Continued on next page...

Continued from previous page...

Mol	Chain	Residues	Atoms						ZeroOcc	AltConf
2	C	1	Total	C	Co	N	O	P	0	0
			100	71	1	13	14	1		
2	D	1	Total	C	Co	N	O	P	0	0
			100	71	1	13	14	1		

- Molecule 3 is N-methylpropane-1,3-diamine (CCD ID: N3D) (formula: $C_4H_{12}N_2$).



Mol	Chain	Residues	Atoms			ZeroOcc	AltConf
3	A	1	Total	C	N	0	0
			6	4	2		
3	B	1	Total	C	N	0	0
			6	4	2		
3	C	1	Total	C	N	0	0
			6	4	2		
3	D	1	Total	C	N	0	0
			6	4	2		

- Molecule 4 is 2-AMINO-2-HYDROXYMETHYL-PROPANE-1,3-DIOL (CCD ID: TRS) (formula: $C_4H_{12}NO_3$).



Mol	Chain	Residues	Atoms				ZeroOcc	AltConf
4	A	1	Total	C	N	O	0	0
			8	4	1	3		
4	B	1	Total	C	N	O	0	0
			8	4	1	3		
4	C	1	Total	C	N	O	0	0
			8	4	1	3		
4	D	1	Total	C	N	O	0	0
			8	4	1	3		

- Molecule 5 is MAGNESIUM ION (CCD ID: MG) (formula: Mg).

Mol	Chain	Residues	Atoms		ZeroOcc	AltConf
5	A	9	Total	Mg	0	0
			9	9		
5	B	9	Total	Mg	0	0
			9	9		
5	C	9	Total	Mg	0	0
			9	9		
5	D	9	Total	Mg	0	0
			9	9		

- Molecule 6 is POTASSIUM ION (CCD ID: K) (formula: K).

Mol	Chain	Residues	Atoms		ZeroOcc	AltConf
6	A	1	Total	K	0	0
			1	1		

Continued on next page...

Continued from previous page...

Mol	Chain	Residues	Atoms		ZeroOcc	AltConf
6	B	1	Total 1	K 1	0	0
6	C	1	Total 1	K 1	0	0
6	D	1	Total 1	K 1	0	0

- Molecule 7 is water.

Mol	Chain	Residues	Atoms		ZeroOcc	AltConf
7	A	196	Total 196	O 196	0	0
7	B	204	Total 204	O 204	0	0
7	C	184	Total 184	O 184	0	0
7	D	184	Total 184	O 184	0	0

3 Residue-property plots [i](#)

These plots are drawn for all protein, RNA, DNA and oligosaccharide chains in the entry. The first graphic for a chain summarises the proportions of the various outlier classes displayed in the second graphic. The second graphic shows the sequence view annotated by issues in geometry and electron density. Residues are color-coded according to the number of geometric quality criteria for which they contain at least one outlier: green = 0, yellow = 1, orange = 2 and red = 3 or more. A red dot above a residue indicates a poor fit to the electron density ($RSRZ > 2$). Stretches of 2 or more consecutive residues without any outlier are shown as a green connector. Residues present in the sample, but not in the model, are shown in grey.

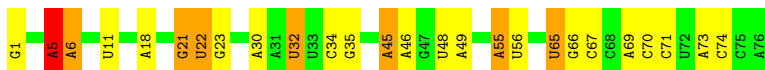
- Molecule 1: RNA (76-MER)

Chain A: 



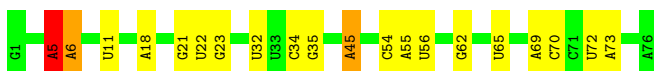
- Molecule 1: RNA (76-MER)

Chain B: 



- Molecule 1: RNA (76-MER)

Chain C: 



- Molecule 1: RNA (76-MER)

Chain D: 



4 Data and refinement statistics

Property	Value	Source
Space group	P 1	Depositor
Cell constants a, b, c, α , β , γ	41.09Å 78.66Å 80.22Å 89.99° 90.03° 90.03°	Depositor
Resolution (Å)	19.91 – 1.90 19.91 – 1.90	Depositor EDS
% Data completeness (in resolution range)	94.8 (19.91-1.90) 94.7 (19.91-1.90)	Depositor EDS
R_{merge}	0.10	Depositor
R_{sym}	(Not available)	Depositor
$\langle I/\sigma(I) \rangle$ ¹	2.12 (at 1.90Å)	Xtriage
Refinement program	PHENIX 1.19.2_4158	Depositor
R, R_{free}	0.191 , 0.221 0.192 , 0.222	Depositor DCC
R_{free} test set	1980 reflections (2.50%)	wwPDB-VP
Wilson B-factor (Å ²)	36.1	Xtriage
Anisotropy	0.298	Xtriage
Bulk solvent k_{sol} (e/Å ³), B_{sol} (Å ²)	0.34 , 40.6	EDS
L-test for twinning ²	$\langle L \rangle = 0.51$, $\langle L^2 \rangle = 0.34$	Xtriage
Estimated twinning fraction	0.000 for h,l,-k 0.000 for h,-l,k 0.000 for h,-k,-l 0.467 for -h,k,-l 0.000 for -h,-k,l 0.000 for -h,l,k 0.000 for -h,-l,-k	Xtriage
F_o, F_c correlation	0.97	EDS
Total number of atoms	7824	wwPDB-VP
Average B, all atoms (Å ²)	41.0	wwPDB-VP

Xtriage's analysis on translational NCS is as follows: *The largest off-origin peak in the Patterson function is 5.59% of the height of the origin peak. No significant pseudotranslation is detected.*

¹Intensities estimated from amplitudes.

²Theoretical values of $\langle |L| \rangle$, $\langle L^2 \rangle$ for acentric reflections are 0.5, 0.333 respectively for untwinned datasets, and 0.375, 0.2 for perfectly twinned datasets.

5 Model quality [i](#)

5.1 Standard geometry [i](#)

Bond lengths and bond angles in the following residue types are not validated in this section: K, MG, GTP, TRS, A1BER, N3D

The Z score for a bond length (or angle) is the number of standard deviations the observed value is removed from the expected value. A bond length (or angle) with $|Z| > 5$ is considered an outlier worth inspection. RMSZ is the root-mean-square of all Z scores of the bond lengths (or angles).

Mol	Chain	Bond lengths		Bond angles	
		RMSZ	$\# Z > 5$	RMSZ	$\# Z > 5$
1	A	0.49	0/1802	0.78	3/2807 (0.1%)
1	B	0.51	0/1802	0.79	4/2807 (0.1%)
1	C	0.49	0/1802	0.75	2/2807 (0.1%)
1	D	0.49	0/1802	0.75	3/2807 (0.1%)
All	All	0.49	0/7208	0.77	12/11228 (0.1%)

There are no bond length outliers.

The worst 5 of 12 bond angle outliers are listed below:

Mol	Chain	Res	Type	Atoms	Z	Observed(°)	Ideal(°)
1	A	5	A	C2'-C3'-O3'	8.29	126.13	113.70
1	B	5	A	C2'-C3'-O3'	8.11	125.87	113.70
1	C	5	A	C2'-C3'-O3'	6.76	123.84	113.70
1	D	5	A	C2'-C3'-O3'	6.41	123.32	113.70
1	C	5	A	C4'-C3'-O3'	6.04	122.05	113.00

There are no chirality outliers.

There are no planarity outliers.

5.2 Too-close contacts [i](#)

In the following table, the Non-H and H(model) columns list the number of non-hydrogen atoms and hydrogen atoms in the chain respectively. The H(added) column lists the number of hydrogen atoms added and optimized by MolProbity. The Clashes column lists the number of clashes within the asymmetric unit, whereas Symm-Clashes lists symmetry-related clashes.

Mol	Chain	Non-H	H(model)	H(added)	Clashes	Symm-Clashes
1	A	1640	0	822	17	0
1	B	1640	0	822	16	0

Continued on next page...

Continued from previous page...

Mol	Chain	Non-H	H(model)	H(added)	Clashes	Symm-Clashes
1	C	1640	0	822	11	0
1	D	1640	0	822	20	0
2	A	100	0	0	6	0
2	B	100	0	0	7	0
2	C	100	0	0	6	0
2	D	100	0	0	6	0
3	A	6	0	12	0	0
3	B	6	0	12	0	0
3	C	6	0	12	0	0
3	D	6	0	12	1	0
4	A	8	0	9	0	0
4	B	8	0	9	0	0
4	C	8	0	9	0	0
4	D	8	0	9	0	0
5	A	9	0	0	0	0
5	B	9	0	0	0	0
5	C	9	0	0	0	0
5	D	9	0	0	0	0
6	A	1	0	0	0	0
6	B	1	0	0	0	0
6	C	1	0	0	0	0
6	D	1	0	0	0	0
7	A	196	0	0	0	0
7	B	204	0	0	1	0
7	C	184	0	0	3	0
7	D	184	0	0	5	0
All	All	7824	0	3372	89	0

The all-atom clashscore is defined as the number of clashes found per 1000 atoms (including hydrogen atoms). The all-atom clashscore for this structure is 9.

The worst 5 of 89 close contacts within the same asymmetric unit are listed below, sorted by their clash magnitude.

Atom-1	Atom-2	Interatomic distance (Å)	Clash overlap (Å)
2:C:101:A1BER:CPR1	2:C:101:A1BER:CPR2	1.53	1.53
2:D:101:A1BER:CPR2	2:D:101:A1BER:CPR1	1.53	1.53
2:B:101:A1BER:CPR2	2:B:101:A1BER:CPR1	1.53	1.52
2:D:101:A1BER:CPR2	2:D:101:A1BER:CPR3	1.51	1.51
2:A:101:A1BER:CPR3	2:A:101:A1BER:CPR2	1.51	1.50

There are no symmetry-related clashes.

5.3 Torsion angles [i](#)

5.3.1 Protein backbone [i](#)

There are no protein molecules in this entry.

5.3.2 Protein sidechains [i](#)

There are no protein molecules in this entry.

5.3.3 RNA [i](#)

Mol	Chain	Analysed	Backbone Outliers	Pucker Outliers
1	A	74/76 (97%)	15 (20%)	4 (5%)
1	B	74/76 (97%)	15 (20%)	4 (5%)
1	C	74/76 (97%)	11 (14%)	3 (4%)
1	D	74/76 (97%)	14 (18%)	4 (5%)
All	All	296/304 (97%)	55 (18%)	15 (5%)

5 of 55 RNA backbone outliers are listed below:

Mol	Chain	Res	Type
1	A	5	A
1	A	6	A
1	A	16	G
1	A	18	A
1	A	21	G

5 of 15 RNA pucker outliers are listed below:

Mol	Chain	Res	Type
1	B	66	G
1	D	21	G
1	C	5	A
1	D	45	A
1	D	5	A

5.4 Non-standard residues in protein, DNA, RNA chains [i](#)

There are no non-standard protein/DNA/RNA residues in this entry.

5.5 Carbohydrates [i](#)

There are no oligosaccharides in this entry.

5.6 Ligand geometry [i](#)

Of 52 ligands modelled in this entry, 40 are monoatomic - leaving 12 for Mogul analysis.

In the following table, the Counts columns list the number of bonds (or angles) for which Mogul statistics could be retrieved, the number of bonds (or angles) that are observed in the model and the number of bonds (or angles) that are defined in the Chemical Component Dictionary. The Link column lists molecule types, if any, to which the group is linked. The Z score for a bond length (or angle) is the number of standard deviations the observed value is removed from the expected value. A bond length (or angle) with $|Z| > 2$ is considered an outlier worth inspection. RMSZ is the root-mean-square of all Z scores of the bond lengths (or angles).

Mol	Type	Chain	Res	Link	Bond lengths			Bond angles		
					Counts	RMSZ	# Z > 2	Counts	RMSZ	# Z > 2
2	A1BER	C	101	-	96,111,111	0.80	2 (2%)	141,182,182	1.22	17 (12%)
4	TRS	B	103	-	7,7,7	2.31	1 (14%)	9,9,9	1.34	2 (22%)
3	N3D	C	102	-	5,5,5	0.63	0	4,4,4	0.34	0
2	A1BER	B	101	6	96,111,111	0.81	0	141,182,182	1.28	19 (13%)
4	TRS	C	103	-	7,7,7	2.27	1 (14%)	9,9,9	1.23	2 (22%)
4	TRS	A	103	-	7,7,7	2.27	1 (14%)	9,9,9	1.44	1 (11%)
2	A1BER	A	101	6	96,111,111	0.77	1 (1%)	141,182,182	1.21	11 (7%)
3	N3D	D	102	-	5,5,5	0.52	0	4,4,4	0.29	0
3	N3D	A	102	-	5,5,5	0.55	0	4,4,4	0.43	0
3	N3D	B	102	-	5,5,5	0.66	0	4,4,4	0.62	0
4	TRS	D	103	-	7,7,7	2.22	1 (14%)	9,9,9	1.27	2 (22%)
2	A1BER	D	101	-	96,111,111	0.78	1 (1%)	141,182,182	1.17	11 (7%)

In the following table, the Chirals column lists the number of chiral outliers, the number of chiral centers analysed, the number of these observed in the model and the number defined in the Chemical Component Dictionary. Similar counts are reported in the Torsion and Rings columns. '-' means no outliers of that kind were identified.

Mol	Type	Chain	Res	Link	Chirals	Torsions	Rings
2	A1BER	C	101	-	-	6/54/238/238	0/4/12/12
4	TRS	B	103	-	-	7/9/9/9	-
3	N3D	C	102	-	-	0/3/3/3	-
2	A1BER	B	101	6	-	4/54/238/238	0/4/12/12
4	TRS	C	103	-	-	9/9/9/9	-

Continued on next page...

Continued from previous page...

Mol	Type	Chain	Res	Link	Chirals	Torsions	Rings
4	TRS	A	103	-	-	8/9/9/9	-
2	A1BER	A	101	6	-	5/54/238/238	0/4/12/12
3	N3D	D	102	-	-	0/3/3/3	-
3	N3D	A	102	-	-	0/3/3/3	-
3	N3D	B	102	-	-	0/3/3/3	-
4	TRS	D	103	-	-	6/9/9/9	-
2	A1BER	D	101	-	-	2/54/238/238	0/4/12/12

The worst 5 of 8 bond length outliers are listed below:

Mol	Chain	Res	Type	Atoms	Z	Observed(Å)	Ideal(Å)
4	B	103	TRS	C-N	-5.97	1.30	1.49
4	A	103	TRS	C-N	-5.83	1.30	1.49
4	C	103	TRS	C-N	-5.72	1.30	1.49
4	D	103	TRS	C-N	-5.64	1.31	1.49
2	A	101	A1BER	CR1-NB1	-2.23	1.44	1.49

The worst 5 of 65 bond angle outliers are listed below:

Mol	Chain	Res	Type	Atoms	Z	Observed(°)	Ideal(°)
2	A	101	A1BER	C26-C2-C3	-4.25	100.00	107.42
2	B	101	A1BER	C14-N23-C11	4.10	111.03	105.44
2	D	101	A1BER	C41-C8-C9	-4.03	104.16	111.19
2	A	101	A1BER	C14-N23-C11	4.01	110.90	105.44
2	C	101	A1BER	C41-C8-C9	-4.01	104.19	111.19

There are no chirality outliers.

5 of 47 torsion outliers are listed below:

Mol	Chain	Res	Type	Atoms
2	C	101	A1BER	C2-C26-C27-O28
4	A	103	TRS	C2-C-C1-O1
4	A	103	TRS	C3-C-C1-O1
4	A	103	TRS	N-C-C1-O1
4	A	103	TRS	N-C-C3-O3

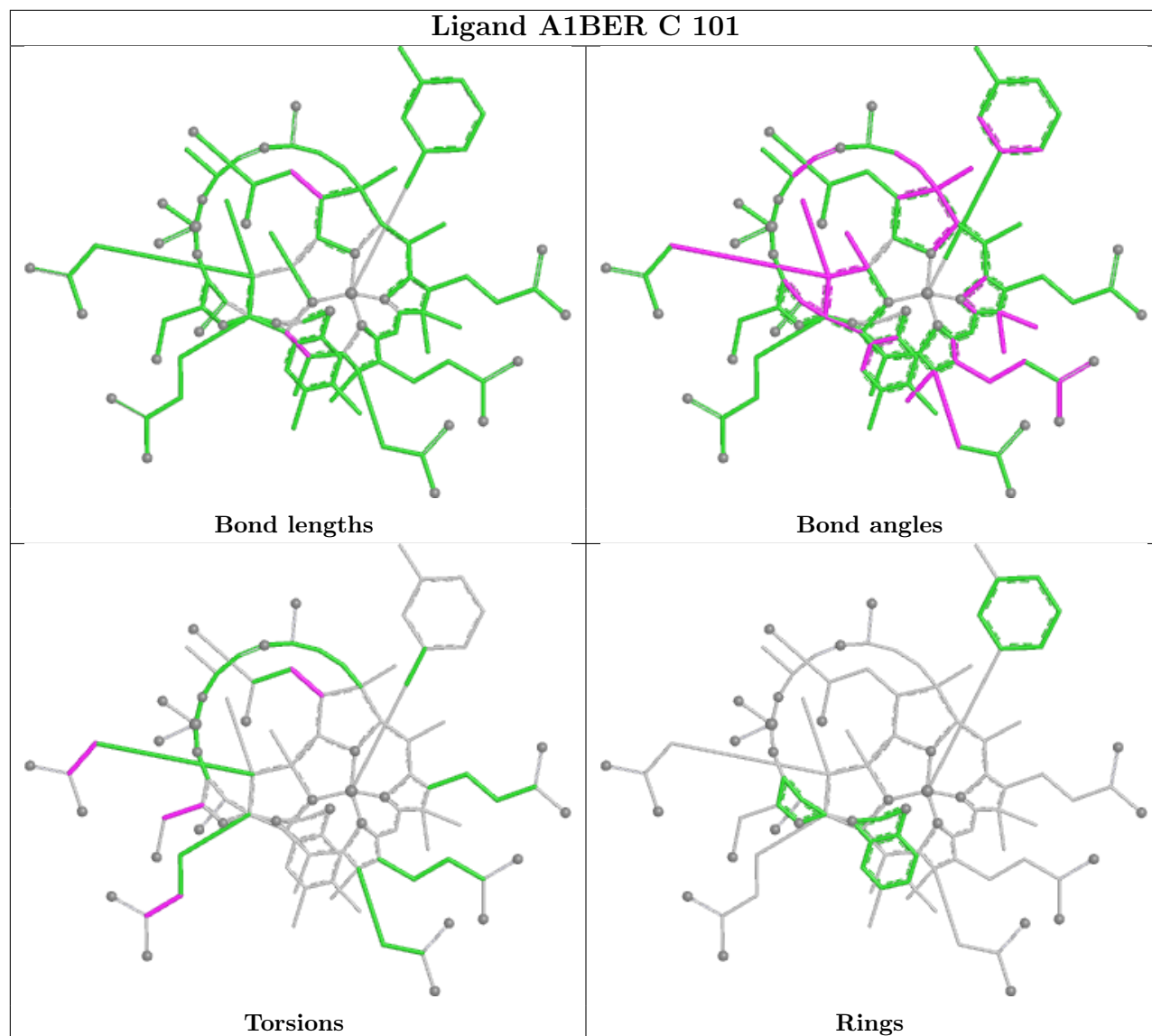
There are no ring outliers.

5 monomers are involved in 26 short contacts:

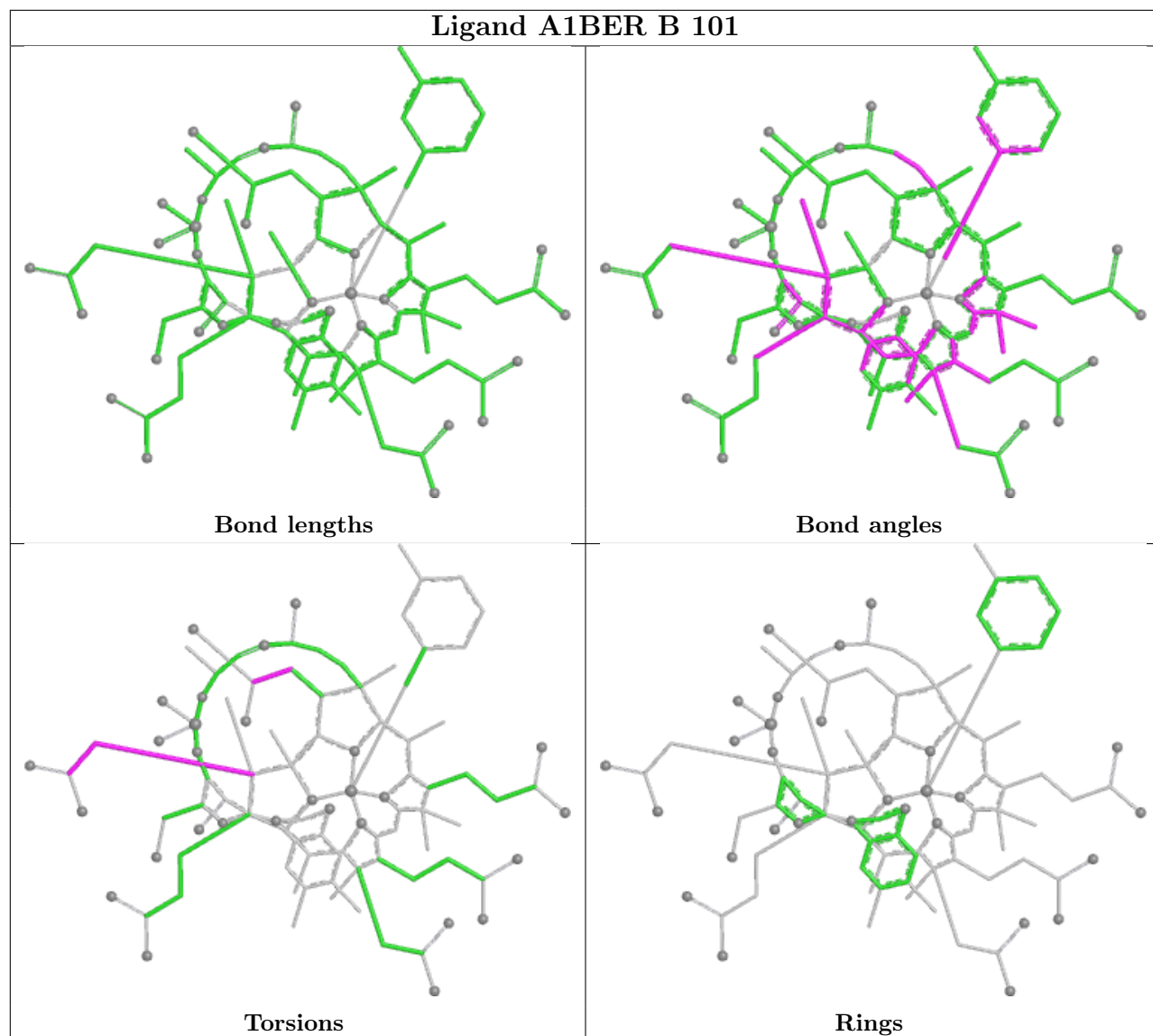
Mol	Chain	Res	Type	Clashes	Symm-Clashes
2	C	101	A1BER	6	0
2	B	101	A1BER	7	0
2	A	101	A1BER	6	0
3	D	102	N3D	1	0
2	D	101	A1BER	6	0

The following is a two-dimensional graphical depiction of Mogul quality analysis of bond lengths, bond angles, torsion angles, and ring geometry for all instances of the Ligand of Interest. In addition, ligands with molecular weight > 250 and outliers as shown on the validation Tables will also be included. For torsion angles, if less than 5% of the Mogul distribution of torsion angles is within 10 degrees of the torsion angle in question, then that torsion angle is considered an outlier. Any bond that is central to one or more torsion angles identified as an outlier by Mogul will be highlighted in the graph. For rings, the root-mean-square deviation (RMSD) between the ring in question and similar rings identified by Mogul is calculated over all ring torsion angles. If the average RMSD is greater than 60 degrees and the minimal RMSD between the ring in question and any Mogul-identified rings is also greater than 60 degrees, then that ring is considered an outlier. The outliers are highlighted in purple. The color gray indicates Mogul did not find sufficient equivalents in the CSD to analyse the geometry.

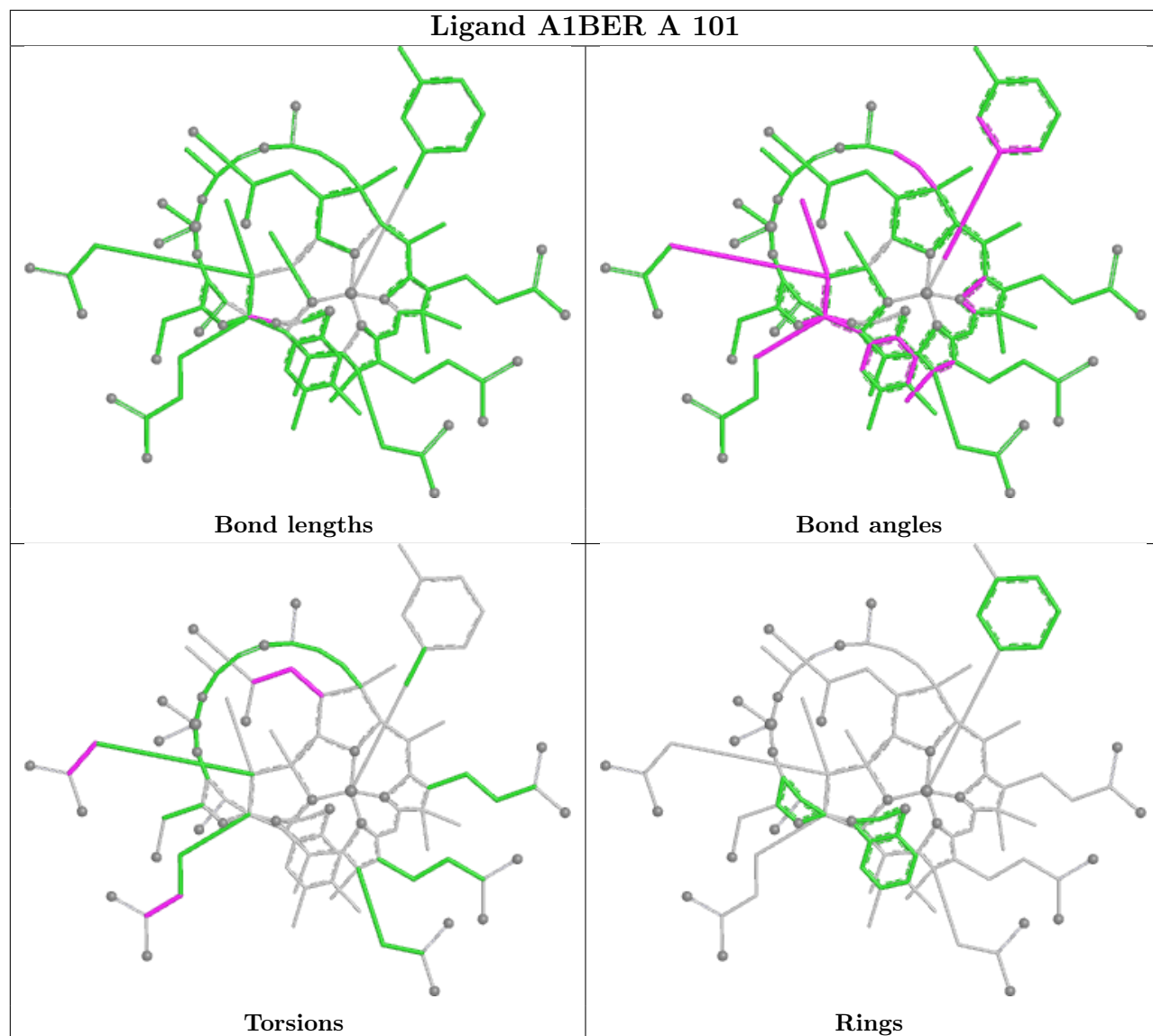
Ligand A1BER C 101

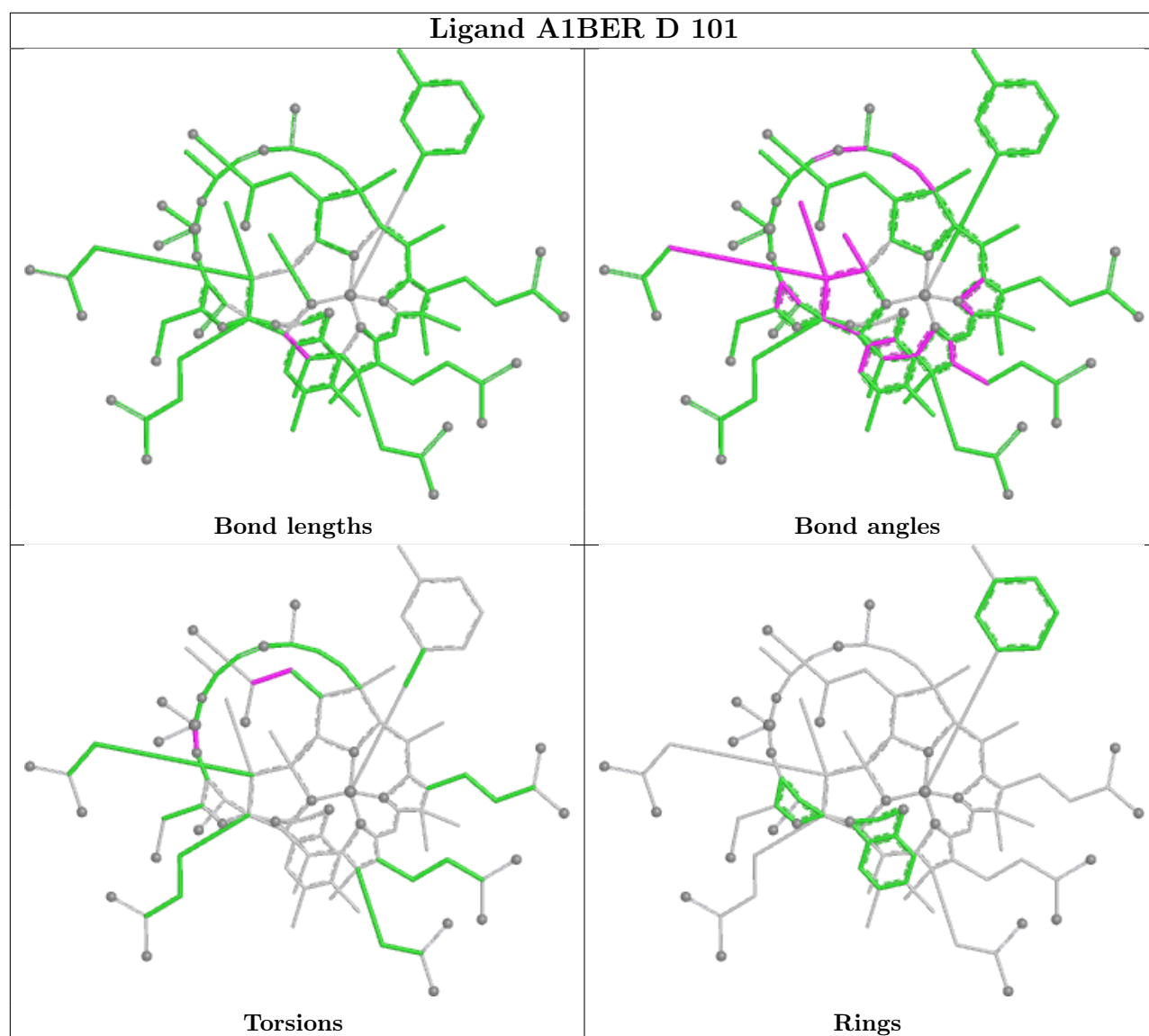


Ligand A1BER B 101



Ligand A1BER A 101





5.7 Other polymers [i](#)

There are no such residues in this entry.

5.8 Polymer linkage issues [i](#)

There are no chain breaks in this entry.

6 Fit of model and data [i](#)

6.1 Protein, DNA and RNA chains [i](#)

In the following table, the column labelled ‘#RSRZ> 2’ contains the number (and percentage) of RSRZ outliers, followed by percent RSRZ outliers for the chain as percentile scores relative to all X-ray entries and entries of similar resolution. The OWAB column contains the minimum, median, 95th percentile and maximum values of the occupancy-weighted average B-factor per residue. The column labelled ‘Q< 0.9’ lists the number of (and percentage) of residues with an average occupancy less than 0.9.

Mol	Chain	Analysed	<RSRZ>	#RSRZ>2	OWAB(Å ²)	Q<0.9
1	A	75/76 (98%)	-1.53	0 100 100	32, 39, 54, 64	0
1	B	75/76 (98%)	-1.55	0 100 100	31, 39, 55, 64	0
1	C	75/76 (98%)	-1.50	0 100 100	33, 41, 51, 76	0
1	D	75/76 (98%)	-1.49	0 100 100	33, 41, 53, 77	0
All	All	300/304 (98%)	-1.52	0 100 100	31, 40, 54, 77	0

There are no RSRZ outliers to report.

6.2 Non-standard residues in protein, DNA, RNA chains [i](#)

There are no non-standard protein/DNA/RNA residues in this entry.

6.3 Carbohydrates [i](#)

There are no oligosaccharides in this entry.

6.4 Ligands [i](#)

In the following table, the Atoms column lists the number of modelled atoms in the group and the number defined in the chemical component dictionary. The B-factors column lists the minimum, median, 95th percentile and maximum values of B factors of atoms in the group. The column labelled ‘Q< 0.9’ lists the number of atoms with occupancy less than 0.9.

Mol	Type	Chain	Res	Atoms	RSCC	RSR	B-factors(Å ²)	Q<0.9
3	N3D	A	102	6/6	0.97	0.06	29,32,36,36	0
3	N3D	B	102	6/6	0.97	0.05	30,30,34,34	0
3	N3D	C	102	6/6	0.97	0.06	31,34,36,36	0
3	N3D	D	102	6/6	0.97	0.07	30,32,34,35	0

Continued on next page...

Continued from previous page...

Mol	Type	Chain	Res	Atoms	RSCC	RSR	B-factors(\AA^2)	Q<0.9
4	TRS	A	103	8/8	0.97	0.06	42,49,56,57	0
4	TRS	D	103	8/8	0.97	0.06	43,46,53,54	0
5	MG	A	104	1/1	0.97	0.04	69,69,69,69	0
4	TRS	B	103	8/8	0.98	0.04	37,46,54,56	0
4	TRS	C	103	8/8	0.98	0.05	42,48,53,55	0
5	MG	A	108	1/1	0.98	0.03	37,37,37,37	0
5	MG	C	104	1/1	0.98	0.10	71,71,71,71	0
5	MG	D	104	1/1	0.98	0.11	70,70,70,70	0
2	A1BER	A	101	100/100	0.99	0.04	30,36,42,49	0
5	MG	A	105	1/1	0.99	0.03	33,33,33,33	0
2	A1BER	B	101	100/100	0.99	0.04	31,35,42,46	0
5	MG	A	109	1/1	0.99	0.03	37,37,37,37	0
5	MG	A	111	1/1	0.99	0.02	39,39,39,39	0
5	MG	B	104	1/1	0.99	0.04	60,60,60,60	0
5	MG	B	105	1/1	0.99	0.01	34,34,34,34	0
5	MG	B	108	1/1	0.99	0.04	39,39,39,39	0
5	MG	B	110	1/1	0.99	0.03	32,32,32,32	0
5	MG	B	111	1/1	0.99	0.02	37,37,37,37	0
2	A1BER	C	101	100/100	0.99	0.04	31,37,44,54	0
5	MG	C	105	1/1	0.99	0.02	39,39,39,39	0
5	MG	C	107	1/1	0.99	0.02	38,38,38,38	0
5	MG	C	108	1/1	0.99	0.02	37,37,37,37	0
5	MG	C	110	1/1	0.99	0.02	34,34,34,34	0
5	MG	C	111	1/1	0.99	0.03	35,35,35,35	0
5	MG	C	112	1/1	0.99	0.03	36,36,36,36	0
2	A1BER	D	101	100/100	0.99	0.04	30,37,46,52	0
5	MG	D	109	1/1	0.99	0.02	46,46,46,46	0
5	MG	D	110	1/1	0.99	0.02	33,33,33,33	0
5	MG	D	111	1/1	0.99	0.03	35,35,35,35	0
6	K	A	113	1/1	0.99	0.02	37,37,37,37	0
6	K	C	113	1/1	0.99	0.07	44,44,44,44	0
5	MG	C	109	1/1	1.00	0.01	41,41,41,41	0
5	MG	B	109	1/1	1.00	0.01	36,36,36,36	0
5	MG	A	112	1/1	1.00	0.01	32,32,32,32	0
5	MG	A	107	1/1	1.00	0.01	35,35,35,35	0
5	MG	B	112	1/1	1.00	0.03	33,33,33,33	0
5	MG	D	105	1/1	1.00	0.02	36,36,36,36	0
5	MG	D	106	1/1	1.00	0.01	36,36,36,36	0
5	MG	D	107	1/1	1.00	0.02	37,37,37,37	0
5	MG	D	108	1/1	1.00	0.03	38,38,38,38	0
5	MG	A	110	1/1	1.00	0.01	33,33,33,33	0
5	MG	B	106	1/1	1.00	0.01	35,35,35,35	0

Continued on next page...

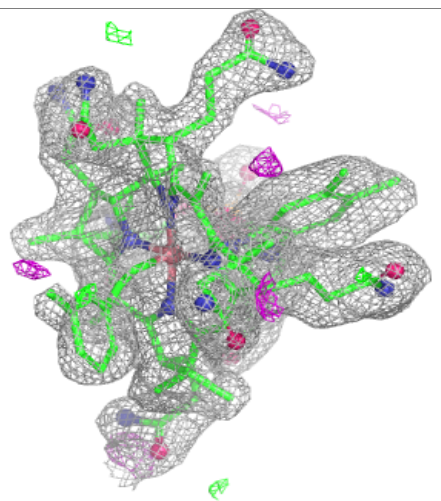
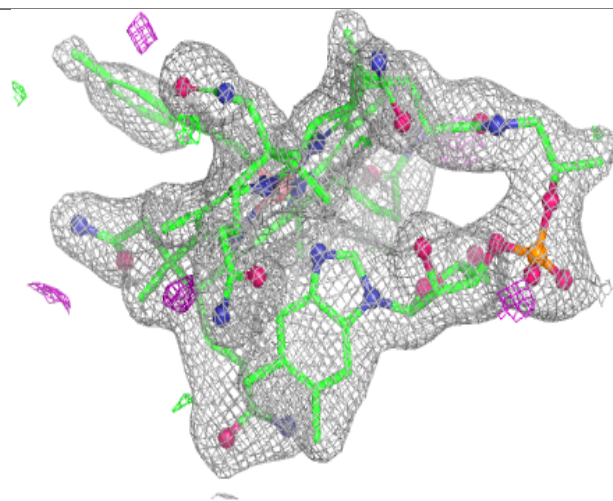
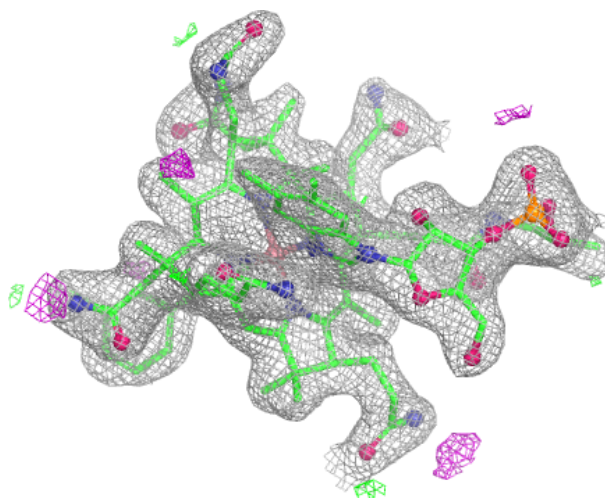
Continued from previous page...

Mol	Type	Chain	Res	Atoms	RSCC	RSR	B-factors(\AA^2)	Q<0.9
5	MG	C	106	1/1	1.00	0.01	36,36,36,36	0
5	MG	D	112	1/1	1.00	0.03	36,36,36,36	0
5	MG	B	107	1/1	1.00	0.03	36,36,36,36	0
6	K	B	113	1/1	1.00	0.02	38,38,38,38	0
5	MG	A	106	1/1	1.00	0.01	34,34,34,34	0
6	K	D	113	1/1	1.00	0.07	45,45,45,45	0

The following is a graphical depiction of the model fit to experimental electron density of all instances of the Ligand of Interest. In addition, ligands with molecular weight > 250 and outliers as shown on the geometry validation Tables will also be included. Each fit is shown from different orientation to approximate a three-dimensional view.

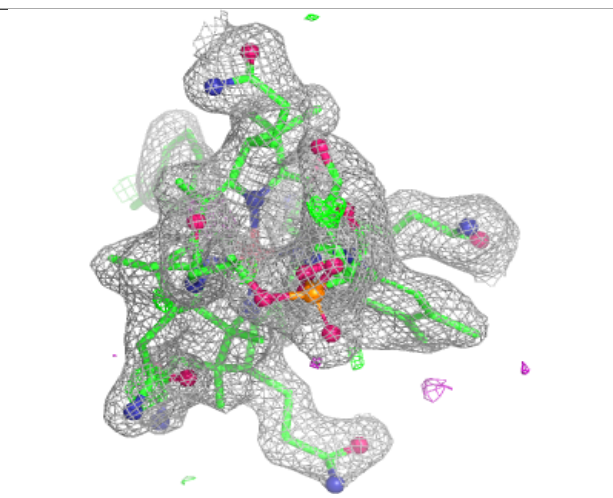
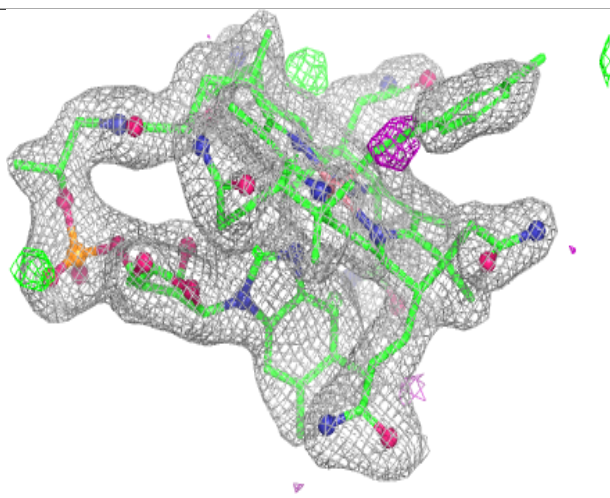
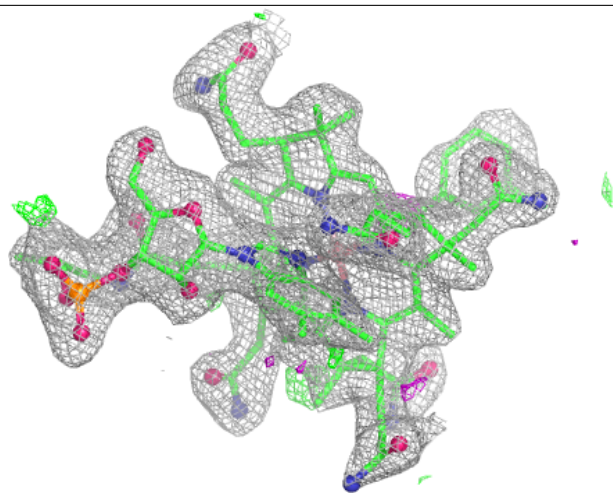
Electron density around A1BER A 101:

2mF_o-DF_c (at 0.7 rmsd) in gray
mF_o-DF_c (at 3 rmsd) in purple (negative)
and green (positive)



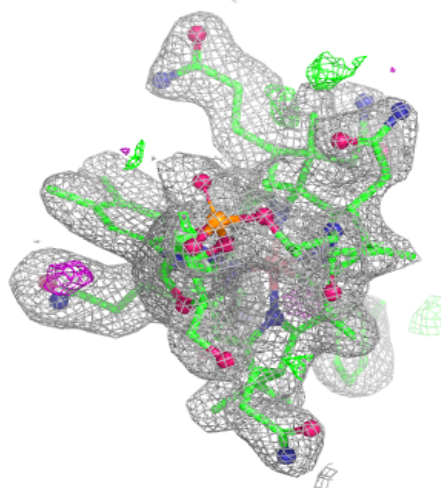
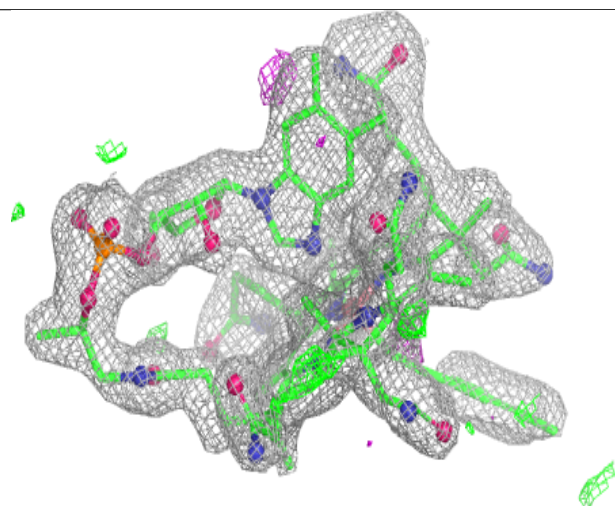
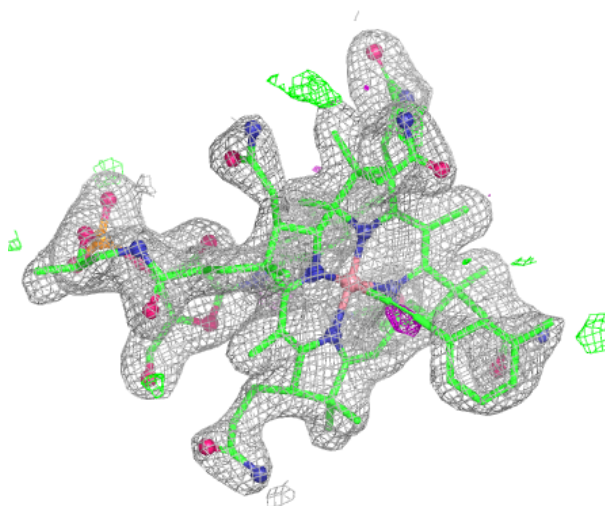
Electron density around A1BER B 101:

$2mF_o-DF_c$ (at 0.7 rmsd) in gray
 mF_o-DF_c (at 3 rmsd) in purple (negative)
and green (positive)



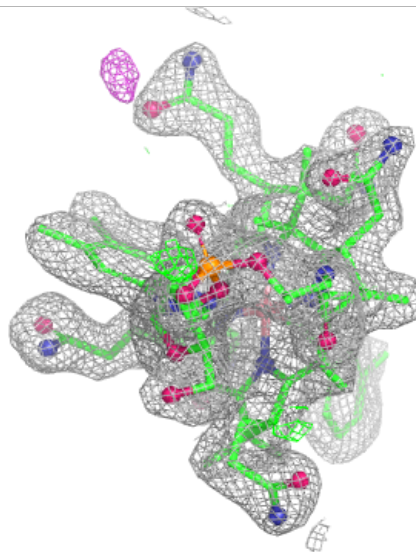
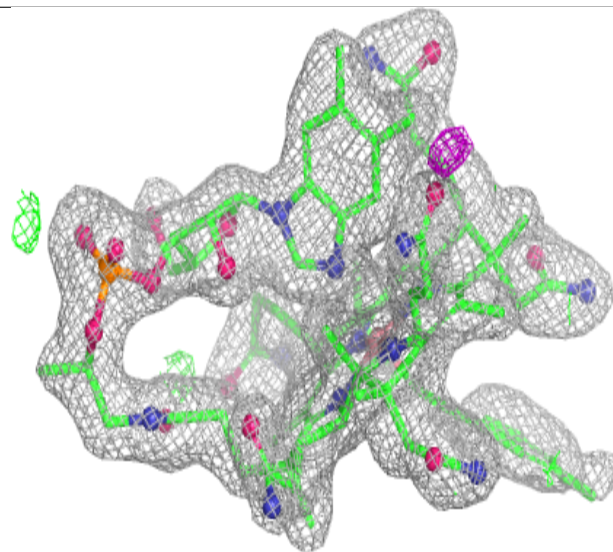
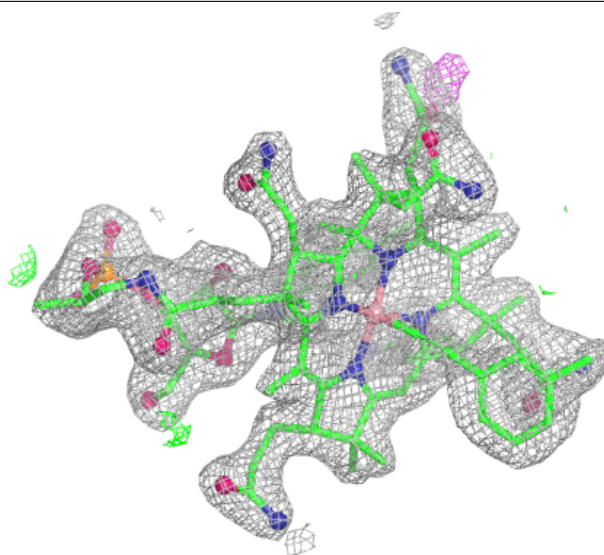
Electron density around A1BER C 101:

$2mF_o-DF_c$ (at 0.7 rmsd) in gray
 mF_o-DF_c (at 3 rmsd) in purple (negative)
and green (positive)



Electron density around A1BER D 101:

$2mF_o-DF_c$ (at 0.7 rmsd) in gray
 mF_o-DF_c (at 3 rmsd) in purple (negative)
and green (positive)



6.5 Other polymers [i](#)

There are no such residues in this entry.