



Full wwPDB X-ray Structure Validation Report ⓘ

Jul 24, 2025 – 02:29 PM EDT

PDB ID : 9E7O / pdb_00009e7o
Title : Pfs230 D13D14 in complex with nanobody W2810
Authors : Dietrich, M.H.; Tan, L.L.; Tham, W.H.
Deposited on : 2024-11-03
Resolution : 1.93 Å(reported)

This is a Full wwPDB X-ray Structure Validation Report for a publicly released PDB entry.

We welcome your comments at validation@mail.wwpdb.org

A user guide is available at

<https://www.wwpdb.org/validation/2017/XrayValidationReportHelp>

with specific help available everywhere you see the ⓘ symbol.

The types of validation reports are described at

<http://www.wwpdb.org/validation/2017/FAQs#types>.

The following versions of software and data (see [references ⓘ](#)) were used in the production of this report:

MolProbity : 4-5-2 with Phenix2.0rc1
Mogul : 2022.3.0, CSD as543be (2022)
Xtriage (Phenix) : 2.0rc1
EDS : 3.0
Percentile statistics : 20231227.v01 (using entries in the PDB archive December 27th 2023)
CCP4 : 9.0.006 (Gargrove)
Density-Fitness : 1.0.12
Ideal geometry (proteins) : Engh & Huber (2001)
Ideal geometry (DNA, RNA) : Parkinson et al. (1996)
Validation Pipeline (wwPDB-VP) : 2.44

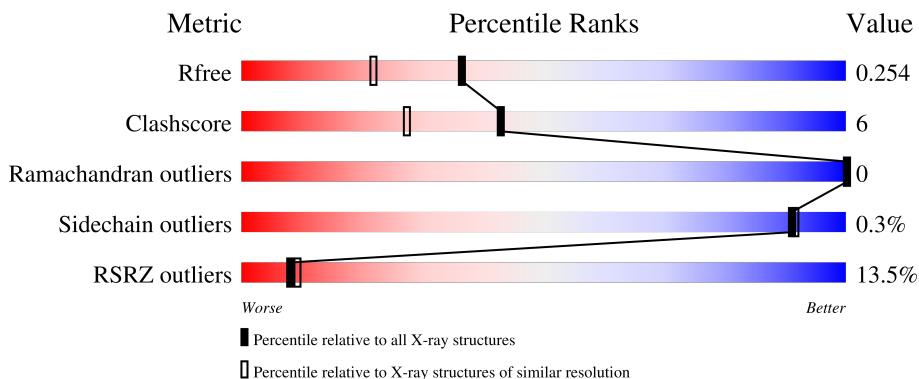
1 Overall quality at a glance

The following experimental techniques were used to determine the structure:

X-RAY DIFFRACTION

The reported resolution of this entry is 1.93 Å.

Percentile scores (ranging between 0-100) for global validation metrics of the entry are shown in the following graphic. The table shows the number of entries on which the scores are based.



Metric	Whole archive (#Entries)	Similar resolution (#Entries, resolution range(Å))
R_{free}	164625	1306 (1.94-1.94)
Clashscore	180529	1400 (1.94-1.94)
Ramachandran outliers	177936	1387 (1.94-1.94)
Sidechain outliers	177891	1387 (1.94-1.94)
RSRZ outliers	164620	1306 (1.94-1.94)

The table below summarises the geometric issues observed across the polymeric chains and their fit to the electron density. The red, orange, yellow and green segments of the lower bar indicate the fraction of residues that contain outliers for ≥ 3 , 2, 1 and 0 types of geometric quality criteria respectively. A grey segment represents the fraction of residues that are not modelled. The numeric value for each fraction is indicated below the corresponding segment, with a dot representing fractions $\leq 5\%$. The upper red bar (where present) indicates the fraction of residues that have poor fit to the electron density. The numeric value is given above the bar.

Mol	Chain	Length	Quality of chain
1	A	127	<div> <div>23%</div> <div> <div></div> <div>79%</div> <div>13%</div> <div>8%</div> </div> </div>
2	B	288	<div> <div>9%</div> <div> <div></div> <div>87%</div> <div>11%</div> <div>•</div> </div> </div>
3	D	2	<div> <div>50%</div> <div>50%</div> </div>

2 Entry composition [i](#)

There are 6 unique types of molecules in this entry. The entry contains 3334 atoms, of which 0 are hydrogens and 0 are deuteriums.

In the tables below, the ZeroOcc column contains the number of atoms modelled with zero occupancy, the AltConf column contains the number of residues with at least one atom in alternate conformation and the Trace column contains the number of residues modelled with at most 2 atoms.

- Molecule 1 is a protein called Nanobody W2810.

Mol	Chain	Residues	Atoms					ZeroOcc	AltConf	Trace
1	A	117	Total	C	N	O	S	0	1	0
			862	540	148	169	5			

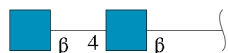
- Molecule 2 is a protein called Gametocyte surface protein P230.

Mol	Chain	Residues	Atoms					ZeroOcc	AltConf	Trace
2	B	282	Total	C	N	O	S	0	4	0
			2272	1460	368	435	9			

There are 3 discrepancies between the modelled and reference sequences:

Chain	Residue	Modelled	Actual	Comment	Reference
B	2824	GLY	-	expression tag	UNP P68874
B	2825	ALA	-	expression tag	UNP P68874
B	2826	SER	-	expression tag	UNP P68874

- Molecule 3 is an oligosaccharide called 2-acetamido-2-deoxy-beta-D-glucopyranose-(1-4)-2-acetamido-2-deoxy-beta-D-glucopyranose.



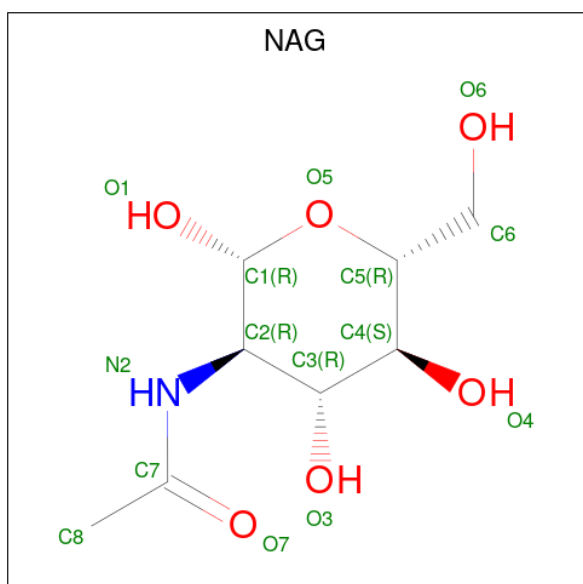
Mol	Chain	Residues	Atoms				ZeroOcc	AltConf	Trace
3	D	2	Total	C	N	O	0	0	0
			28	16	2	10			

- Molecule 4 is 1,2-ETHANEDIOL (CCD ID: EDO) (formula: C₂H₆O₂).



Mol	Chain	Residues	Atoms			ZeroOcc	AltConf
4	A	1	Total	C	O	0	0
			4	2	2		
4	A	1	Total	C	O	0	0
			4	2	2		
4	A	1	Total	C	O	0	0
			4	2	2		
4	B	1	Total	C	O	0	0
			4	2	2		

- Molecule 5 is 2-acetamido-2-deoxy-beta-D-glucopyranose (CCD ID: NAG) (formula: $C_8H_{15}NO_6$).



Mol	Chain	Residues	Atoms				ZeroOcc	AltConf
5	B	1	Total	C	N	O	0	0
			14	8	1	5		
5	B	1	Total	C	N	O	0	0
			14	8	1	5		

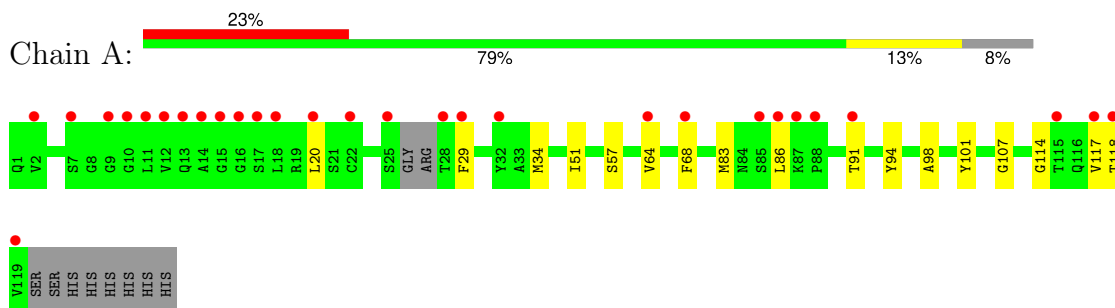
- Molecule 6 is water.

Mol	Chain	Residues	Atoms		ZeroOcc	AltConf
6	A	32	Total	O	0	0
			32	32		
6	B	96	Total	O	0	0
			96	96		

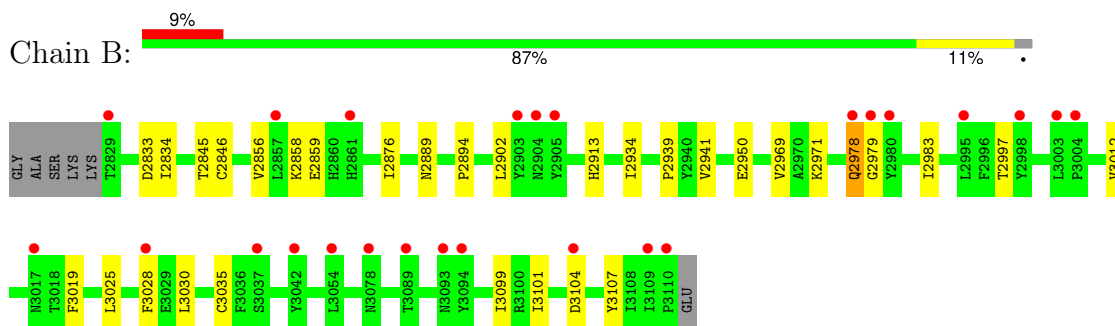
3 Residue-property plots [i](#)

These plots are drawn for all protein, RNA, DNA and oligosaccharide chains in the entry. The first graphic for a chain summarises the proportions of the various outlier classes displayed in the second graphic. The second graphic shows the sequence view annotated by issues in geometry and electron density. Residues are color-coded according to the number of geometric quality criteria for which they contain at least one outlier: green = 0, yellow = 1, orange = 2 and red = 3 or more. A red dot above a residue indicates a poor fit to the electron density ($RSRZ > 2$). Stretches of 2 or more consecutive residues without any outlier are shown as a green connector. Residues present in the sample, but not in the model, are shown in grey.

- Molecule 1: Nanobody W2810



- Molecule 2: Gametocyte surface protein P230



- Molecule 3: 2-acetamido-2-deoxy-beta-D-glucopyranose-(1-4)-2-acetamido-2-deoxy-beta-D-glucopyranose



4 Data and refinement statistics

Property	Value	Source
Space group	C 1 2 1	Depositor
Cell constants a, b, c, α , β , γ	135.49Å 62.82Å 56.48Å 90.00° 98.92° 90.00°	Depositor
Resolution (Å)	39.92 – 1.93 39.92 – 1.93	Depositor EDS
% Data completeness (in resolution range)	99.9 (39.92-1.93) 99.9 (39.92-1.93)	Depositor EDS
R_{merge}	0.05	Depositor
R_{sym}	(Not available)	Depositor
$\langle I/\sigma(I) \rangle$ ¹	1.32 (at 1.94Å)	Xtriage
Refinement program	PHENIX (1.21.1_5286: ???)	Depositor
R, R_{free}	0.214 , 0.254 0.213 , 0.254	Depositor DCC
R_{free} test set	1770 reflections (5.00%)	wwPDB-VP
Wilson B-factor (Å ²)	39.2	Xtriage
Anisotropy	0.286	Xtriage
Bulk solvent k_{sol} (e/Å ³), B_{sol} (Å ²)	0.35 , 40.9	EDS
L-test for twinning ²	$\langle L \rangle = 0.51$, $\langle L^2 \rangle = 0.34$	Xtriage
Estimated twinning fraction	No twinning to report.	Xtriage
F_o, F_c correlation	0.96	EDS
Total number of atoms	3334	wwPDB-VP
Average B, all atoms (Å ²)	50.0	wwPDB-VP

Xtriage's analysis on translational NCS is as follows: *The largest off-origin peak in the Patterson function is 6.34% of the height of the origin peak. No significant pseudotranslation is detected.*

¹Intensities estimated from amplitudes.

²Theoretical values of $\langle |L| \rangle$, $\langle L^2 \rangle$ for acentric reflections are 0.5, 0.333 respectively for untwinned datasets, and 0.375, 0.2 for perfectly twinned datasets.

5 Model quality

5.1 Standard geometry

Bond lengths and bond angles in the following residue types are not validated in this section: EDO, NAG

The Z score for a bond length (or angle) is the number of standard deviations the observed value is removed from the expected value. A bond length (or angle) with $|Z| > 5$ is considered an outlier worth inspection. RMSZ is the root-mean-square of all Z scores of the bond lengths (or angles).

Mol	Chain	Bond lengths		Bond angles	
		RMSZ	$\# Z > 5$	RMSZ	$\# Z > 5$
1	A	0.42	0/885	0.58	0/1196
2	B	0.42	0/2342	0.65	0/3196
All	All	0.42	0/3227	0.63	0/4392

There are no bond length outliers.

There are no bond angle outliers.

There are no chirality outliers.

There are no planarity outliers.

5.2 Too-close contacts

In the following table, the Non-H and H(model) columns list the number of non-hydrogen atoms and hydrogen atoms in the chain respectively. The H(added) column lists the number of hydrogen atoms added and optimized by MolProbity. The Clashes column lists the number of clashes within the asymmetric unit, whereas Symm-Clashes lists symmetry-related clashes.

Mol	Chain	Non-H	H(model)	H(added)	Clashes	Symm-Clashes
1	A	862	0	790	14	0
2	B	2272	0	2120	24	0
3	D	28	0	25	1	0
4	A	12	0	18	1	0
4	B	4	0	6	0	0
5	B	28	0	26	0	0
6	A	32	0	0	0	0
6	B	96	0	0	5	0
All	All	3334	0	2985	38	0

The all-atom clashscore is defined as the number of clashes found per 1000 atoms (including hydrogen atoms). The all-atom clashscore for this structure is 6.

All (38) close contacts within the same asymmetric unit are listed below, sorted by their clash magnitude.

Atom-1	Atom-2	Interatomic distance (Å)	Clash overlap (Å)
1:A:91:THR:HG23	1:A:118:THR:HA	1.45	0.94
2:B:2941:VAL:H	2:B:2979:GLY:HA3	1.44	0.81
2:B:2979:GLY:O	6:B:3301:HOH:O	2.07	0.73
2:B:3099:ILE:HD11	2:B:3101:ILE:HD11	1.73	0.71
1:A:20:LEU:HG	1:A:83:MET:HE2	1.76	0.66
2:B:2876:ILE:HG12	2:B:2934:ILE:HG12	1.83	0.60
2:B:3104:ASP:HB3	2:B:3107:TYR:HB2	1.85	0.59
1:A:68:PHE:HD1	1:A:83:MET:HA	1.68	0.59
2:B:2856:VAL:HG23	2:B:2858:LYS:HE2	1.84	0.58
1:A:83:MET:HB3	1:A:86:LEU:HD21	1.87	0.56
1:A:68:PHE:CD1	1:A:83:MET:HA	2.40	0.56
2:B:2846:CYS:O	6:B:3302:HOH:O	2.17	0.55
2:B:2978:GLN:HG3	2:B:2979:GLY:N	2.22	0.55
1:A:91:THR:HA	1:A:117:VAL:O	2.07	0.55
2:B:2969:VAL:HG11	3:D:1:NAG:H83	1.90	0.54
1:A:20:LEU:HG	1:A:83:MET:CE	2.37	0.53
2:B:3025:LEU:HD12	2:B:3028:PHE:HE1	1.74	0.53
2:B:3025:LEU:HB2	2:B:3028:PHE:CD1	2.44	0.52
2:B:3025:LEU:HB2	2:B:3028:PHE:HD1	1.72	0.52
2:B:2889:ASN:ND2	6:B:3306:HOH:O	2.44	0.49
2:B:2913:HIS:HE1	6:B:3392:HOH:O	1.95	0.49
1:A:57:SER:HB3	4:A:203:EDO:H21	1.96	0.48
1:A:34[B]:MET:SD	1:A:98:ALA:HB2	2.55	0.47
1:A:34[A]:MET:HG3	1:A:51:ILE:CG2	2.45	0.46
2:B:2833:ASP:OD1	2:B:2834:ILE:N	2.44	0.46
2:B:2979:GLY:HA2	6:B:3330:HOH:O	2.15	0.46
1:A:94:TYR:O	1:A:114:GLY:HA2	2.16	0.45
1:A:29:PHE:CE1	1:A:34[B]:MET:SD	3.10	0.45
1:A:64:VAL:HB	1:A:68:PHE:CD2	2.53	0.43
2:B:2950:GLU:HG2	2:B:2971:LYS:HG2	2.00	0.43
2:B:2983:ILE:O	2:B:2997:THR:HG23	2.18	0.43
2:B:2845:THR:HG22	2:B:2876:ILE:HB	2.00	0.42
2:B:2859:GLU:OE1	2:B:2859:GLU:N	2.44	0.42
2:B:2894:PRO:HD3	2:B:2902:LEU:HG	2.02	0.42
2:B:3012:VAL:HB	2:B:3101:ILE:HD13	2.03	0.41
1:A:101:TYR:CZ	1:A:107:GLY:HA2	2.55	0.41
2:B:2939:PRO:HB3	2:B:3019:PHE:CG	2.56	0.40
2:B:3030:LEU:HD11	2:B:3035[A]:CYS:HB3	2.03	0.40

There are no symmetry-related clashes.

5.3 Torsion angles

5.3.1 Protein backbone

In the following table, the Percentiles column shows the percent Ramachandran outliers of the chain as a percentile score with respect to all X-ray entries followed by that with respect to entries of similar resolution.

The Analysed column shows the number of residues for which the backbone conformation was analysed, and the total number of residues.

Mol	Chain	Analysed	Favoured	Allowed	Outliers	Percentiles	
1	A	114/127 (90%)	112 (98%)	2 (2%)	0	100	100
2	B	284/288 (99%)	276 (97%)	8 (3%)	0	100	100
All	All	398/415 (96%)	388 (98%)	10 (2%)	0	100	100

There are no Ramachandran outliers to report.

5.3.2 Protein sidechains

In the following table, the Percentiles column shows the percent sidechain outliers of the chain as a percentile score with respect to all X-ray entries followed by that with respect to entries of similar resolution.

The Analysed column shows the number of residues for which the sidechain conformation was analysed, and the total number of residues.

Mol	Chain	Analysed	Rotameric	Outliers	Percentiles	
1	A	84/98 (86%)	84 (100%)	0	100	100
2	B	253/272 (93%)	252 (100%)	1 (0%)	89	89
All	All	337/370 (91%)	336 (100%)	1 (0%)	91	91

All (1) residues with a non-rotameric sidechain are listed below:

Mol	Chain	Res	Type
2	B	2978	GLN

Sometimes sidechains can be flipped to improve hydrogen bonding and reduce clashes. All (5) such sidechains are listed below:

Mol	Chain	Res	Type
1	A	39	GLN
1	A	77	ASN

Continued on next page...

Continued from previous page...

Mol	Chain	Res	Type
2	B	2860	HIS
2	B	2861	HIS
2	B	2977	ASN

5.3.3 RNA ⓘ

There are no RNA molecules in this entry.

5.4 Non-standard residues in protein, DNA, RNA chains ⓘ

There are no non-standard protein/DNA/RNA residues in this entry.

5.5 Carbohydrates ⓘ

2 monosaccharides are modelled in this entry.

In the following table, the Counts columns list the number of bonds (or angles) for which Mogul statistics could be retrieved, the number of bonds (or angles) that are observed in the model and the number of bonds (or angles) that are defined in the Chemical Component Dictionary. The Link column lists molecule types, if any, to which the group is linked. The Z score for a bond length (or angle) is the number of standard deviations the observed value is removed from the expected value. A bond length (or angle) with $|Z| > 2$ is considered an outlier worth inspection. RMSZ is the root-mean-square of all Z scores of the bond lengths (or angles).

Mol	Type	Chain	Res	Link	Bond lengths			Bond angles		
					Counts	RMSZ	$\# Z > 2$	Counts	RMSZ	$\# Z > 2$
3	NAG	D	1	2,3	14,14,15	1.23	3 (21%)	17,19,21	1.65	3 (17%)
3	NAG	D	2	3	14,14,15	0.67	0	17,19,21	1.33	3 (17%)

In the following table, the Chirals column lists the number of chiral outliers, the number of chiral centers analysed, the number of these observed in the model and the number defined in the Chemical Component Dictionary. Similar counts are reported in the Torsion and Rings columns. '-' means no outliers of that kind were identified.

Mol	Type	Chain	Res	Link	Chirals	Torsions	Rings
3	NAG	D	1	2,3	-	1/6/23/26	0/1/1/1
3	NAG	D	2	3	-	2/6/23/26	0/1/1/1

All (3) bond length outliers are listed below:

Mol	Chain	Res	Type	Atoms	Z	Observed(Å)	Ideal(Å)
3	D	1	NAG	O5-C1	-2.81	1.39	1.43
3	D	1	NAG	C2-N2	-2.23	1.42	1.46
3	D	1	NAG	C1-C2	2.03	1.55	1.52

All (6) bond angle outliers are listed below:

Mol	Chain	Res	Type	Atoms	Z	Observed(°)	Ideal(°)
3	D	1	NAG	O5-C1-C2	-4.51	104.31	111.29
3	D	2	NAG	C1-O5-C5	3.14	116.39	112.19
3	D	1	NAG	C2-N2-C7	2.82	126.68	122.90
3	D	2	NAG	C8-C7-N2	-2.13	112.58	116.12
3	D	1	NAG	C6-C5-C4	2.13	118.24	113.02
3	D	2	NAG	C2-N2-C7	2.05	125.65	122.90

There are no chirality outliers.

All (3) torsion outliers are listed below:

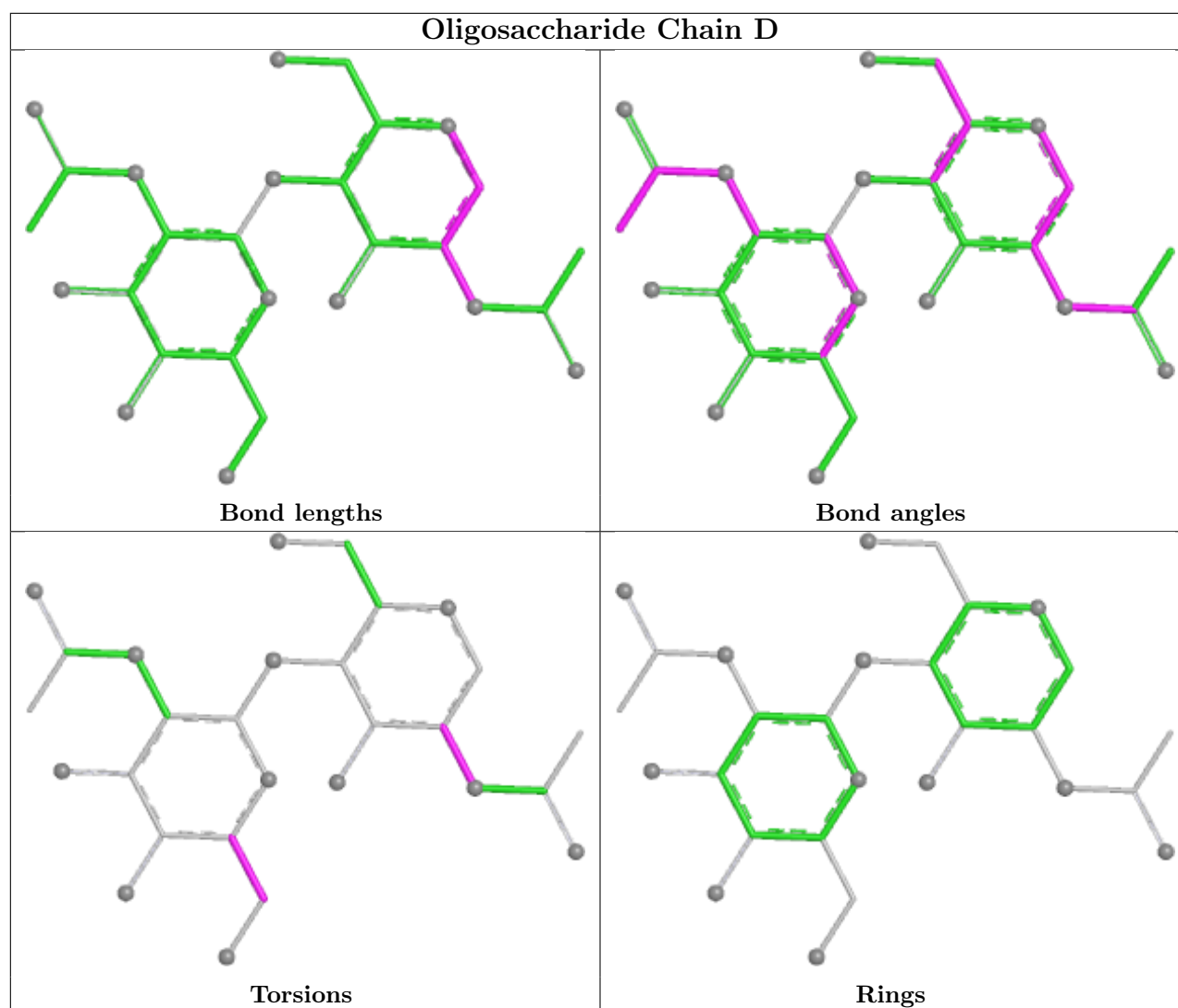
Mol	Chain	Res	Type	Atoms
3	D	1	NAG	C3-C2-N2-C7
3	D	2	NAG	C4-C5-C6-O6
3	D	2	NAG	O5-C5-C6-O6

There are no ring outliers.

1 monomer is involved in 1 short contact:

Mol	Chain	Res	Type	Clashes	Symm-Clashes
3	D	1	NAG	1	0

The following is a two-dimensional graphical depiction of Mogul quality analysis of bond lengths, bond angles, torsion angles, and ring geometry for oligosaccharide.



5.6 Ligand geometry [i](#)

6 ligands are modelled in this entry.

In the following table, the Counts columns list the number of bonds (or angles) for which Mogul statistics could be retrieved, the number of bonds (or angles) that are observed in the model and the number of bonds (or angles) that are defined in the Chemical Component Dictionary. The Link column lists molecule types, if any, to which the group is linked. The Z score for a bond length (or angle) is the number of standard deviations the observed value is removed from the expected value. A bond length (or angle) with $|Z| > 2$ is considered an outlier worth inspection. RMSZ is the root-mean-square of all Z scores of the bond lengths (or angles).

Mol	Type	Chain	Res	Link	Bond lengths			Bond angles		
					Counts	RMSZ	$\# Z > 2$	Counts	RMSZ	$\# Z > 2$
4	EDO	A	203	-	3,3,3	0.36	0	2,2,2	0.31	0
4	EDO	B	3201	-	3,3,3	0.32	0	2,2,2	0.40	0
5	NAG	B	3203	2	14,14,15	0.75	0	17,19,21	1.18	2 (11%)

Mol	Type	Chain	Res	Link	Bond lengths			Bond angles		
					Counts	RMSZ	# Z > 2	Counts	RMSZ	# Z > 2
4	EDO	A	202	-	3,3,3	0.23	0	2,2,2	0.56	0
4	EDO	A	201	-	3,3,3	0.31	0	2,2,2	0.59	0
5	NAG	B	3202	-	14,14,15	0.68	0	17,19,21	0.76	0

In the following table, the Chirals column lists the number of chiral outliers, the number of chiral centers analysed, the number of these observed in the model and the number defined in the Chemical Component Dictionary. Similar counts are reported in the Torsion and Rings columns. '-' means no outliers of that kind were identified.

Mol	Type	Chain	Res	Link	Chirals	Torsions	Rings
4	EDO	A	203	-	-	1/1/1/1	-
4	EDO	B	3201	-	-	0/1/1/1	-
5	NAG	B	3203	2	-	4/6/23/26	0/1/1/1
4	EDO	A	202	-	-	1/1/1/1	-
4	EDO	A	201	-	-	0/1/1/1	-
5	NAG	B	3202	-	-	4/6/23/26	0/1/1/1

There are no bond length outliers.

All (2) bond angle outliers are listed below:

Mol	Chain	Res	Type	Atoms	Z	Observed(°)	Ideal(°)
5	B	3203	NAG	C2-N2-C7	3.16	127.14	122.90
5	B	3203	NAG	C1-O5-C5	2.26	115.21	112.19

There are no chirality outliers.

All (10) torsion outliers are listed below:

Mol	Chain	Res	Type	Atoms
5	B	3202	NAG	O5-C5-C6-O6
5	B	3202	NAG	C8-C7-N2-C2
5	B	3202	NAG	O7-C7-N2-C2
5	B	3203	NAG	C8-C7-N2-C2
5	B	3203	NAG	O7-C7-N2-C2
5	B	3202	NAG	C4-C5-C6-O6
5	B	3203	NAG	O5-C5-C6-O6
5	B	3203	NAG	C4-C5-C6-O6
4	A	203	EDO	O1-C1-C2-O2
4	A	202	EDO	O1-C1-C2-O2

There are no ring outliers.

1 monomer is involved in 1 short contact:

Mol	Chain	Res	Type	Clashes	Symm-Clashes
4	A	203	EDO	1	0

5.7 Other polymers [i](#)

There are no such residues in this entry.

5.8 Polymer linkage issues [i](#)

There are no chain breaks in this entry.

6 Fit of model and data ⓘ

6.1 Protein, DNA and RNA chains ⓘ

In the following table, the column labelled ‘#RSRZ > 2’ contains the number (and percentage) of RSRZ outliers, followed by percent RSRZ outliers for the chain as percentile scores relative to all X-ray entries and entries of similar resolution. The OWAB column contains the minimum, median, 95th percentile and maximum values of the occupancy-weighted average B-factor per residue. The column labelled ‘Q < 0.9’ lists the number of (and percentage) of residues with an average occupancy less than 0.9.

Mol	Chain	Analysed	<RSRZ>	#RSRZ>2	OWAB(Å ²)	Q<0.9
1	A	117/127 (92%)	1.21	29 (24%) 2 2	25, 50, 76, 85	1 (0%)
2	B	282/288 (97%)	0.53	25 (8%) 17 19	20, 46, 79, 94	4 (1%)
All	All	399/415 (96%)	0.73	54 (13%) 8 9	20, 48, 77, 94	5 (1%)

All (54) RSRZ outliers are listed below:

Mol	Chain	Res	Type	RSRZ
1	A	86	LEU	4.6
1	A	9	GLY	4.5
1	A	117	VAL	4.5
1	A	119	VAL	4.2
1	A	14	ALA	4.1
2	B	3110	PRO	3.9
1	A	18	LEU	3.6
2	B	2978	GLN	3.4
2	B	3093	ASN	3.3
1	A	32	TYR	3.2
2	B	2857	LEU	3.2
2	B	2829	THR	3.0
2	B	2903	TYR	3.0
2	B	3054	LEU	3.0
2	B	2904	ASN	2.9
1	A	12	VAL	2.9
1	A	15	GLY	2.9
2	B	3037	SER	2.9
1	A	115	THR	2.8
1	A	20	LEU	2.8
1	A	88	PRO	2.7
2	B	2905	TYR	2.7
1	A	11	LEU	2.7
2	B	3109	ILE	2.7

Continued on next page...

Continued from previous page...

Mol	Chain	Res	Type	RSRZ
1	A	28	THR	2.6
1	A	10	GLY	2.6
2	B	3094	TYR	2.6
1	A	16	GLY	2.6
2	B	2998	TYR	2.5
1	A	118	THR	2.5
1	A	2	VAL	2.5
1	A	91	THR	2.5
1	A	87	LYS	2.4
2	B	3078	ASN	2.4
1	A	68	PHE	2.3
1	A	7	SER	2.3
1	A	64	VAL	2.3
1	A	13	GLN	2.3
1	A	85	SER	2.3
2	B	2980	TYR	2.3
2	B	3003	LEU	2.3
1	A	25	SER	2.2
1	A	29	PHE	2.2
2	B	3104	ASP	2.2
1	A	17	SER	2.2
2	B	2995	LEU	2.1
2	B	3042	TYR	2.1
2	B	3028	PHE	2.1
2	B	3017	ASN	2.1
2	B	2979	GLY	2.1
2	B	3089	THR	2.1
2	B	3004	PRO	2.0
2	B	2861	HIS	2.0
1	A	22	CYS	2.0

6.2 Non-standard residues in protein, DNA, RNA chains ⓘ

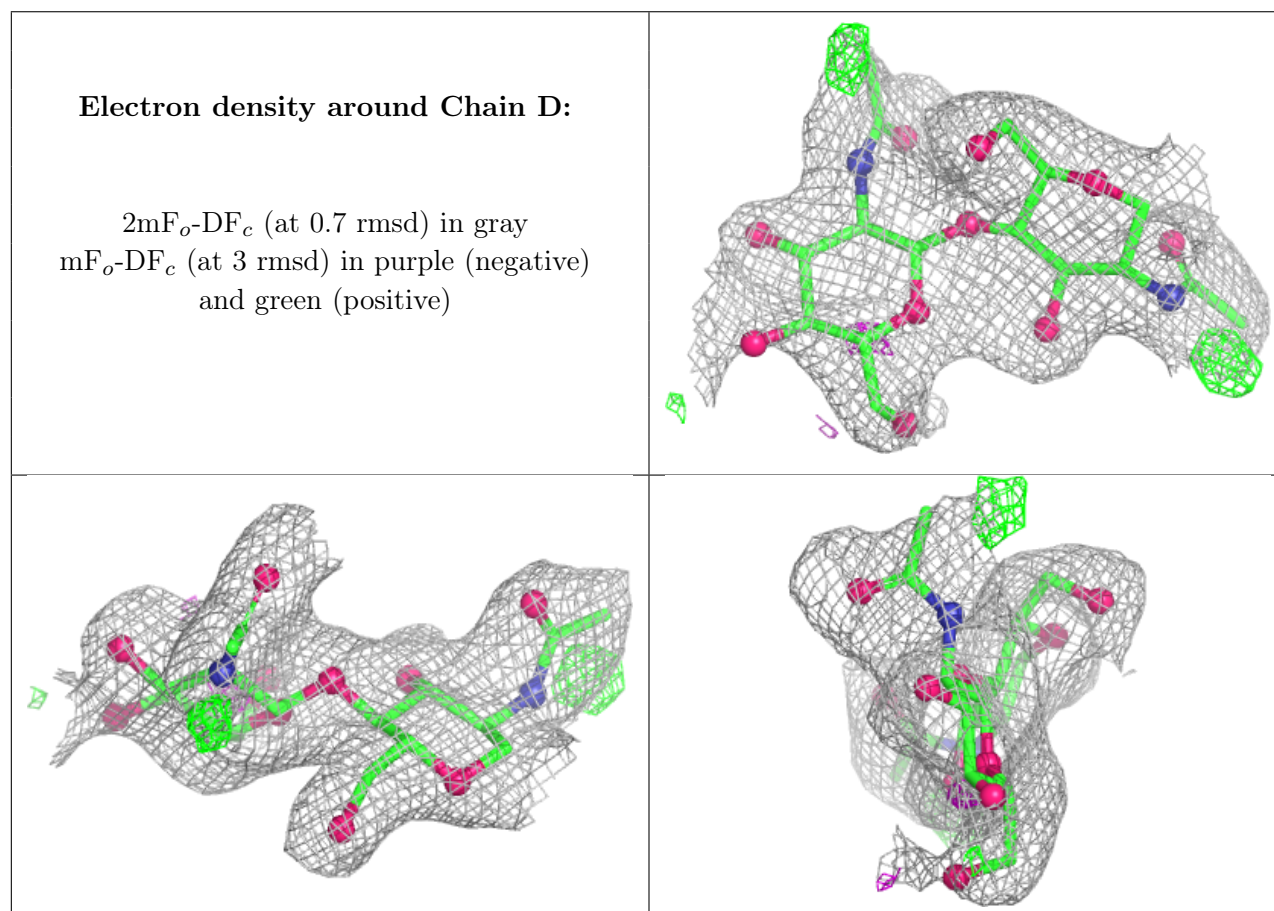
There are no non-standard protein/DNA/RNA residues in this entry.

6.3 Carbohydrates ⓘ

In the following table, the Atoms column lists the number of modelled atoms in the group and the number defined in the chemical component dictionary. The B-factors column lists the minimum, median, 95th percentile and maximum values of B factors of atoms in the group. The column labelled 'Q< 0.9' lists the number of atoms with occupancy less than 0.9.

Mol	Type	Chain	Res	Atoms	RSCC	RSR	B-factors(\AA^2)	Q<0.9
3	NAG	D	1	14/15	-	-	37,46,51,59	0
3	NAG	D	2	14/15	-	-	65,72,80,83	0

The following is a graphical depiction of the model fit to experimental electron density for oligosaccharide. Each fit is shown from different orientation to approximate a three-dimensional view.



6.4 Ligands [i](#)

In the following table, the Atoms column lists the number of modelled atoms in the group and the number defined in the chemical component dictionary. The B-factors column lists the minimum, median, 95th percentile and maximum values of B factors of atoms in the group. The column labelled 'Q< 0.9' lists the number of atoms with occupancy less than 0.9.

Mol	Type	Chain	Res	Atoms	RSCC	RSR	B-factors(\AA^2)	Q<0.9
5	NAG	B	3202	14/15	0.51	0.16	86,96,100,107	0
5	NAG	B	3203	14/15	0.57	0.13	91,97,102,102	0
4	EDO	A	202	4/4	0.73	0.17	45,51,54,55	0
4	EDO	A	203	4/4	0.85	0.20	40,43,46,47	0
4	EDO	B	3201	4/4	0.91	0.10	36,42,46,50	0
4	EDO	A	201	4/4	0.96	0.07	34,35,36,41	0

6.5 Other polymers ⓘ

There are no such residues in this entry.