



# Full wwPDB X-ray Structure Validation Report ⓘ

Oct 13, 2024 – 01:03 am BST

PDB ID : 5EHF  
Title : Laccase from Antrodia faginea  
Authors : Polyakov, K.M.; Glazunova, O.A.; Fedorova, T.V.; Dorovatovskii, P.V.; Koroleva, O.V.  
Deposited on : 2015-10-28  
Resolution : 1.75 Å(reported)

This is a Full wwPDB X-ray Structure Validation Report for a publicly released PDB entry.

We welcome your comments at [validation@mail.wwpdb.org](mailto:validation@mail.wwpdb.org)

A user guide is available at

<https://www.wwpdb.org/validation/2017/XrayValidationReportHelp>

with specific help available everywhere you see the ⓘ symbol.

The types of validation reports are described at

<http://www.wwpdb.org/validation/2017/FAQs#types>.

---

The following versions of software and data (see [references ⓘ](#)) were used in the production of this report:

MolProbity	:	4.02b-467
Mogul	:	1.8.4, CSD as541be (2020)
Xtriage (Phenix)	:	1.13
EDS	:	3.0
Percentile statistics	:	20231227.v01 (using entries in the PDB archive December 27th 2023)
CCP4	:	9.0.003 (Gargrove)
Density-Fitness	:	1.0.11
Ideal geometry (proteins)	:	Engh & Huber (2001)
Ideal geometry (DNA, RNA)	:	Parkinson et al. (1996)
Validation Pipeline (wwPDB-VP)	:	2.39

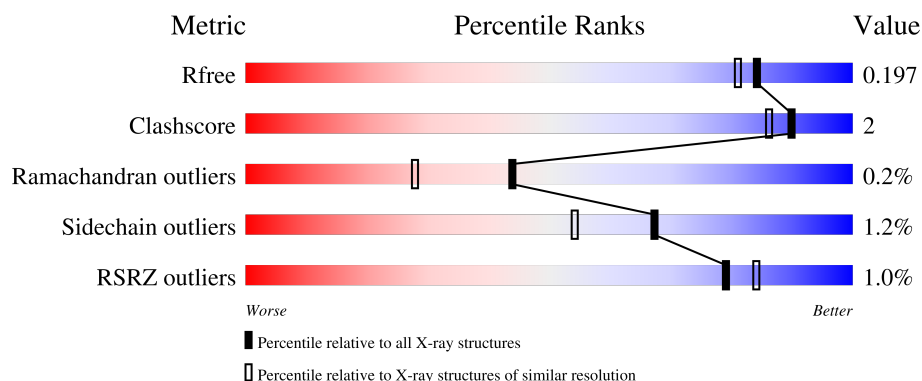
# 1 Overall quality at a glance

The following experimental techniques were used to determine the structure:

*X-RAY DIFFRACTION*

The reported resolution of this entry is 1.75 Å.

Percentile scores (ranging between 0-100) for global validation metrics of the entry are shown in the following graphic. The table shows the number of entries on which the scores are based.



Metric	Whole archive (#Entries)	Similar resolution (#Entries, resolution range(Å))
$R_{free}$	164625	2888 (1.76-1.76)
Clashscore	180529	3097 (1.76-1.76)
Ramachandran outliers	177936	3072 (1.76-1.76)
Sidechain outliers	177891	3072 (1.76-1.76)
RSRZ outliers	164620	2887 (1.76-1.76)

The table below summarises the geometric issues observed across the polymeric chains and their fit to the electron density. The red, orange, yellow and green segments of the lower bar indicate the fraction of residues that contain outliers for  $\geq 3$ , 2, 1 and 0 types of geometric quality criteria respectively. A grey segment represents the fraction of residues that are not modelled. The numeric value for each fraction is indicated below the corresponding segment, with a dot representing fractions  $\leq 5\%$ . The upper red bar (where present) indicates the fraction of residues that have poor fit to the electron density. The numeric value is given above the bar.

Mol	Chain	Length	Quality of chain
1	A	497	<div> <div></div> <div>95%</div> <div>5%</div> </div>
2	B	2	<div> <div>100%</div> </div>

## 2 Entry composition [i](#)

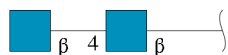
There are 7 unique types of molecules in this entry. The entry contains 4348 atoms, of which 0 are hydrogens and 0 are deuteriums.

In the tables below, the ZeroOcc column contains the number of atoms modelled with zero occupancy, the AltConf column contains the number of residues with at least one atom in alternate conformation and the Trace column contains the number of residues modelled with at most 2 atoms.

- Molecule 1 is a protein called Laccase.

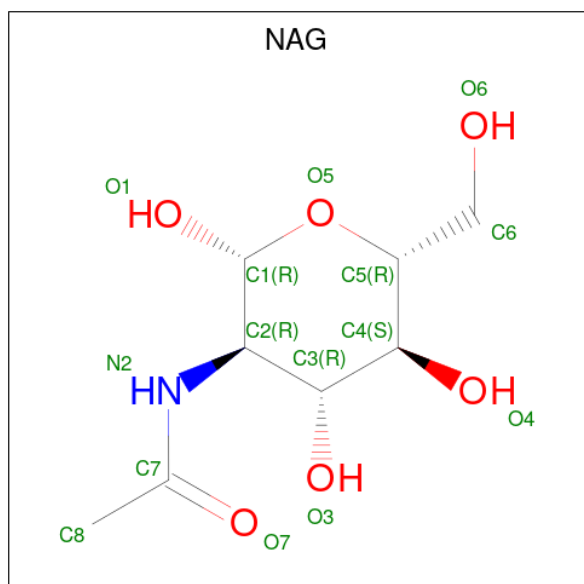
Mol	Chain	Residues	Atoms					ZeroOcc	AltConf	Trace
			Total	C	N	O	S			
1	A	497	3849	2452	655	731	11	0	9	0

- Molecule 2 is an oligosaccharide called 2-acetamido-2-deoxy-beta-D-glucopyranose-(1-4)-2-acetamido-2-deoxy-beta-D-glucopyranose.



Mol	Chain	Residues	Atoms				ZeroOcc	AltConf	Trace
			Total	C	N	O			
2	B	2	28	16	2	10	0	0	0

- Molecule 3 is 2-acetamido-2-deoxy-beta-D-glucopyranose (three-letter code: NAG) (formula:  $C_8H_{15}NO_6$ ).



Mol	Chain	Residues	Atoms				ZeroOcc	AltConf
3	A	1	Total	C	N	O	0	0
			14	8	1	5		
3	A	1	Total	C	N	O	0	0
			14	8	1	5		

- Molecule 4 is GLYCEROL (three-letter code: GOL) (formula:  $C_3H_8O_3$ ).



Mol	Chain	Residues	Atoms			ZeroOcc	AltConf
4	A	1	Total	C	O	0	0
			6	3	3		
4	A	1	Total	C	O	0	0
			6	3	3		

- Molecule 5 is COPPER (II) ION (three-letter code: CU) (formula: Cu).

Mol	Chain	Residues	Atoms		ZeroOcc	AltConf
5	A	4	Total	Cu	0	0
			4	4		

- Molecule 6 is ZINC ION (three-letter code: ZN) (formula: Zn).

Mol	Chain	Residues	Atoms		ZeroOcc	AltConf
6	A	2	Total	Zn	0	0
			2	2		

- Molecule 7 is water.

Mol	Chain	Residues	Atoms		ZeroOcc	AltConf
7	A	425	Total 425	O 425	0	0

### 3 Residue-property plots

These plots are drawn for all protein, RNA, DNA and oligosaccharide chains in the entry. The first graphic for a chain summarises the proportions of the various outlier classes displayed in the second graphic. The second graphic shows the sequence view annotated by issues in geometry and electron density. Residues are color-coded according to the number of geometric quality criteria for which they contain at least one outlier: green = 0, yellow = 1, orange = 2 and red = 3 or more. A red dot above a residue indicates a poor fit to the electron density ( $RSRZ > 2$ ). Stretches of 2 or more consecutive residues without any outlier are shown as a green connector. Residues present in the sample, but not in the model, are shown in grey.

- Molecule 1: Laccase

Chain A: 



- Molecule 2: 2-acetamido-2-deoxy-beta-D-glucopyranose-(1-4)-2-acetamido-2-deoxy-beta-D-glucopyranose

Chain B: 



## 4 Data and refinement statistics

Property	Value	Source
Space group	P 1 21 1	Depositor
Cell constants a, b, c, $\alpha$ , $\beta$ , $\gamma$	48.15Å 81.54Å 78.50Å 90.00° 104.75° 90.00°	Depositor
Resolution (Å)	75.91 – 1.75 75.91 – 1.75	Depositor EDS
% Data completeness (in resolution range)	89.6 (75.91-1.75) 89.6 (75.91-1.75)	Depositor EDS
$R_{merge}$	0.06	Depositor
$R_{sym}$	(Not available)	Depositor
$\langle I/\sigma(I) \rangle$ <sup>1</sup>	1.35 (at 1.75Å)	Xtriage
Refinement program	REFMAC 5.8.0049	Depositor
R, $R_{free}$	0.160 , 0.195 0.161 , 0.197	Depositor DCC
$R_{free}$ test set	2689 reflections (5.08%)	wwPDB-VP
Wilson B-factor (Å <sup>2</sup> )	16.7	Xtriage
Anisotropy	0.383	Xtriage
Bulk solvent $k_{sol}$ (e/Å <sup>3</sup> ), $B_{sol}$ (Å <sup>2</sup> )	0.38 , 41.7	EDS
L-test for twinning <sup>2</sup>	$\langle  L  \rangle = 0.46$ , $\langle L^2 \rangle = 0.29$	Xtriage
Estimated twinning fraction	No twinning to report.	Xtriage
$F_o, F_c$ correlation	0.97	EDS
Total number of atoms	4348	wwPDB-VP
Average B, all atoms (Å <sup>2</sup> )	19.0	wwPDB-VP

Xtriage's analysis on translational NCS is as follows: *The largest off-origin peak in the Patterson function is 5.03% of the height of the origin peak. No significant pseudotranslation is detected.*

<sup>1</sup>Intensities estimated from amplitudes.

<sup>2</sup>Theoretical values of  $\langle |L| \rangle$ ,  $\langle L^2 \rangle$  for acentric reflections are 0.5, 0.333 respectively for untwinned datasets, and 0.375, 0.2 for perfectly twinned datasets.

## 5 Model quality [i](#)

### 5.1 Standard geometry [i](#)

Bond lengths and bond angles in the following residue types are not validated in this section: CU, NAG, GOL, ZN

The Z score for a bond length (or angle) is the number of standard deviations the observed value is removed from the expected value. A bond length (or angle) with  $|Z| > 5$  is considered an outlier worth inspection. RMSZ is the root-mean-square of all Z scores of the bond lengths (or angles).

Mol	Chain	Bond lengths		Bond angles	
		RMSZ	$\# Z  > 5$	RMSZ	$\# Z  > 5$
1	A	0.85	1/4014 (0.0%)	0.88	2/5516 (0.0%)

All (1) bond length outliers are listed below:

Mol	Chain	Res	Type	Atoms	Z	Observed(Å)	Ideal(Å)
1	A	116	TYR	CE1-CZ	5.01	1.45	1.38

All (2) bond angle outliers are listed below:

Mol	Chain	Res	Type	Atoms	Z	Observed(°)	Ideal(°)
1	A	244	ARG	NE-CZ-NH1	6.78	123.69	120.30
1	A	366	ASP	CB-CG-OD1	5.43	123.18	118.30

There are no chirality outliers.

There are no planarity outliers.

### 5.2 Too-close contacts [i](#)

In the following table, the Non-H and H(model) columns list the number of non-hydrogen atoms and hydrogen atoms in the chain respectively. The H(added) column lists the number of hydrogen atoms added and optimized by MolProbity. The Clashes column lists the number of clashes within the asymmetric unit, whereas Symm-Clashes lists symmetry-related clashes.

Mol	Chain	Non-H	H(model)	H(added)	Clashes	Symm-Clashes
1	A	3849	0	3667	13	0
2	B	28	0	25	0	0
3	A	28	0	26	0	0
4	A	12	0	16	0	0
5	A	4	0	0	0	0

*Continued on next page...*

*Continued from previous page...*

Mol	Chain	Non-H	H(model)	H(added)	Clashes	Symm-Clashes
6	A	2	0	0	0	0
7	A	425	0	0	2	0
All	All	4348	0	3734	13	0

The all-atom clashscore is defined as the number of clashes found per 1000 atoms (including hydrogen atoms). The all-atom clashscore for this structure is 2.

All (13) close contacts within the same asymmetric unit are listed below, sorted by their clash magnitude.

Atom-1	Atom-2	Interatomic distance (Å)	Clash overlap (Å)
1:A:133:LEU:HD13	1:A:222:ILE:HB	1.53	0.91
1:A:218[A]:ASP:OD1	7:A:601:HOH:O	1.98	0.81
1:A:341:VAL:HG11	1:A:463[A]:VAL:HG11	1.88	0.56
1:A:207:GLU:HB3	1:A:208:PRO:HD3	1.95	0.48
1:A:133:LEU:HD12	7:A:754:HOH:O	2.14	0.47
1:A:341:VAL:HG11	1:A:463[A]:VAL:CG1	2.44	0.47
1:A:341:VAL:CG1	1:A:463[A]:VAL:HG11	2.46	0.45
1:A:150:ASP:HB2	1:A:166:PRO:HB3	1.98	0.45
1:A:494:PRO:HA	1:A:495:GLY:HA2	1.65	0.41
1:A:353:ILE:CD1	1:A:464:VAL:HG21	2.51	0.41
1:A:64:HIS:NE2	1:A:66:HIS:HA	2.35	0.41
1:A:357:ILE:HA	1:A:361:ALA:HB3	2.04	0.40

There are no symmetry-related clashes.

## 5.3 Torsion angles ⓘ

### 5.3.1 Protein backbone ⓘ

In the following table, the Percentiles column shows the percent Ramachandran outliers of the chain as a percentile score with respect to all X-ray entries followed by that with respect to entries of similar resolution.

The Analysed column shows the number of residues for which the backbone conformation was analysed, and the total number of residues.

Mol	Chain	Analysed	Favoured	Allowed	Outliers	Percentiles
1	A	504/497 (101%)	491 (97%)	12 (2%)	1 (0%)	44 28

All (1) Ramachandran outliers are listed below:

Mol	Chain	Res	Type
1	A	207	GLU

### 5.3.2 Protein sidechains [i](#)

In the following table, the Percentiles column shows the percent sidechain outliers of the chain as a percentile score with respect to all X-ray entries followed by that with respect to entries of similar resolution.

The Analysed column shows the number of residues for which the sidechain conformation was analysed, and the total number of residues.

Mol	Chain	Analysed	Rotameric	Outliers	Percentiles
1	A	425/416 (102%)	420 (99%)	5 (1%)	67 54

All (5) residues with a non-rotameric sidechain are listed below:

Mol	Chain	Res	Type
1	A	116	TYR
1	A	134	LYS
1	A	266	ASP
1	A	448	PHE
1	A	461	PHE

Sometimes sidechains can be flipped to improve hydrogen bonding and reduce clashes. All (6) such sidechains are listed below:

Mol	Chain	Res	Type
1	A	43	ASN
1	A	45	GLN
1	A	71	HIS
1	A	83	ASN
1	A	158	GLN
1	A	338	ASN

### 5.3.3 RNA [i](#)

There are no RNA molecules in this entry.

## 5.4 Non-standard residues in protein, DNA, RNA chains [i](#)

4 non-standard protein/DNA/RNA residues are modelled in this entry.

In the following table, the Counts columns list the number of bonds (or angles) for which Mogul statistics could be retrieved, the number of bonds (or angles) that are observed in the model and the number of bonds (or angles) that are defined in the Chemical Component Dictionary. The Link column lists molecule types, if any, to which the group is linked. The Z score for a bond length (or angle) is the number of standard deviations the observed value is removed from the expected value. A bond length (or angle) with  $|Z| > 2$  is considered an outlier worth inspection. RMSZ is the root-mean-square of all Z scores of the bond lengths (or angles).

Mol	Type	Chain	Res	Link	Bond lengths			Bond angles		
					Counts	RMSZ	$\# Z  > 2$	Counts	RMSZ	$\# Z  > 2$
3	NAG	A	501	1	14,14,15	0.62	0	17,19,21	2.03	5 (29%)
2	NAG	B	1	2,1	14,14,15	0.78	0	17,19,21	1.21	3 (17%)
3	NAG	A	502	1	14,14,15	0.50	0	17,19,21	1.62	4 (23%)
2	NAG	B	2	2	14,14,15	0.68	0	17,19,21	1.50	4 (23%)

In the following table, the Chirals column lists the number of chiral outliers, the number of chiral centers analysed, the number of these observed in the model and the number defined in the Chemical Component Dictionary. Similar counts are reported in the Torsion and Rings columns. '-' means no outliers of that kind were identified.

Mol	Type	Chain	Res	Link	Chirals	Torsions	Rings
3	NAG	A	501	1	-	2/6/23/26	0/1/1/1
2	NAG	B	1	2,1	-	0/6/23/26	0/1/1/1
3	NAG	A	502	1	-	0/6/23/26	0/1/1/1
2	NAG	B	2	2	-	0/6/23/26	0/1/1/1

There are no bond length outliers.

All (16) bond angle outliers are listed below:

Mol	Chain	Res	Type	Atoms	Z	Observed(°)	Ideal(°)
3	A	501	NAG	O5-C5-C6	4.56	114.35	107.20
3	A	501	NAG	C2-N2-C7	4.37	129.12	122.90
3	A	502	NAG	C3-C4-C5	-3.43	104.13	110.24
2	B	2	NAG	O7-C7-C8	-2.70	117.04	122.06
3	A	501	NAG	C1-C2-N2	-2.65	105.95	110.49
2	B	1	NAG	C3-C4-C5	-2.56	105.67	110.24
3	A	502	NAG	O4-C4-C5	2.51	115.54	109.30
2	B	2	NAG	O6-C6-C5	-2.34	103.27	111.29
3	A	502	NAG	C1-C2-N2	-2.26	106.63	110.49
2	B	2	NAG	O3-C3-C2	-2.14	105.04	109.47
2	B	1	NAG	C1-O5-C5	2.13	115.08	112.19
3	A	501	NAG	C4-C3-C2	2.12	114.13	111.02
2	B	1	NAG	O4-C4-C3	-2.12	105.45	110.35

*Continued on next page...*

*Continued from previous page...*

Mol	Chain	Res	Type	Atoms	Z	Observed(°)	Ideal(°)
3	A	502	NAG	C2-N2-C7	-2.09	119.92	122.90
3	A	501	NAG	O4-C4-C3	2.06	115.10	110.35
2	B	2	NAG	O3-C3-C4	2.00	114.97	110.35

There are no chirality outliers.

All (2) torsion outliers are listed below:

Mol	Chain	Res	Type	Atoms
3	A	501	NAG	O5-C5-C6-O6
3	A	501	NAG	C4-C5-C6-O6

There are no ring outliers.

No monomer is involved in short contacts.

## 5.5 Carbohydrates [i](#)

2 monosaccharides are modelled in this entry.

In the following table, the Counts columns list the number of bonds (or angles) for which Mogul statistics could be retrieved, the number of bonds (or angles) that are observed in the model and the number of bonds (or angles) that are defined in the Chemical Component Dictionary. The Link column lists molecule types, if any, to which the group is linked. The Z score for a bond length (or angle) is the number of standard deviations the observed value is removed from the expected value. A bond length (or angle) with  $|Z| > 2$  is considered an outlier worth inspection. RMSZ is the root-mean-square of all Z scores of the bond lengths (or angles).

Mol	Type	Chain	Res	Link	Bond lengths			Bond angles		
					Counts	RMSZ	$\# Z  > 2$	Counts	RMSZ	$\# Z  > 2$
2	NAG	B	1	2,1	14,14,15	0.78	0	17,19,21	1.21	3 (17%)
2	NAG	B	2	2	14,14,15	0.68	0	17,19,21	1.50	4 (23%)

In the following table, the Chirals column lists the number of chiral outliers, the number of chiral centers analysed, the number of these observed in the model and the number defined in the Chemical Component Dictionary. Similar counts are reported in the Torsion and Rings columns. '-' means no outliers of that kind were identified.

Mol	Type	Chain	Res	Link	Chirals	Torsions	Rings
2	NAG	B	1	2,1	-	0/6/23/26	0/1/1/1
2	NAG	B	2	2	-	0/6/23/26	0/1/1/1

There are no bond length outliers.

All (7) bond angle outliers are listed below:

Mol	Chain	Res	Type	Atoms	Z	Observed(°)	Ideal(°)
2	B	2	NAG	O7-C7-C8	-2.70	117.04	122.06
2	B	1	NAG	C3-C4-C5	-2.56	105.67	110.24
2	B	2	NAG	O6-C6-C5	-2.34	103.27	111.29
2	B	2	NAG	O3-C3-C2	-2.14	105.04	109.47
2	B	1	NAG	C1-O5-C5	2.13	115.08	112.19
2	B	1	NAG	O4-C4-C3	-2.12	105.45	110.35
2	B	2	NAG	O3-C3-C4	2.00	114.97	110.35

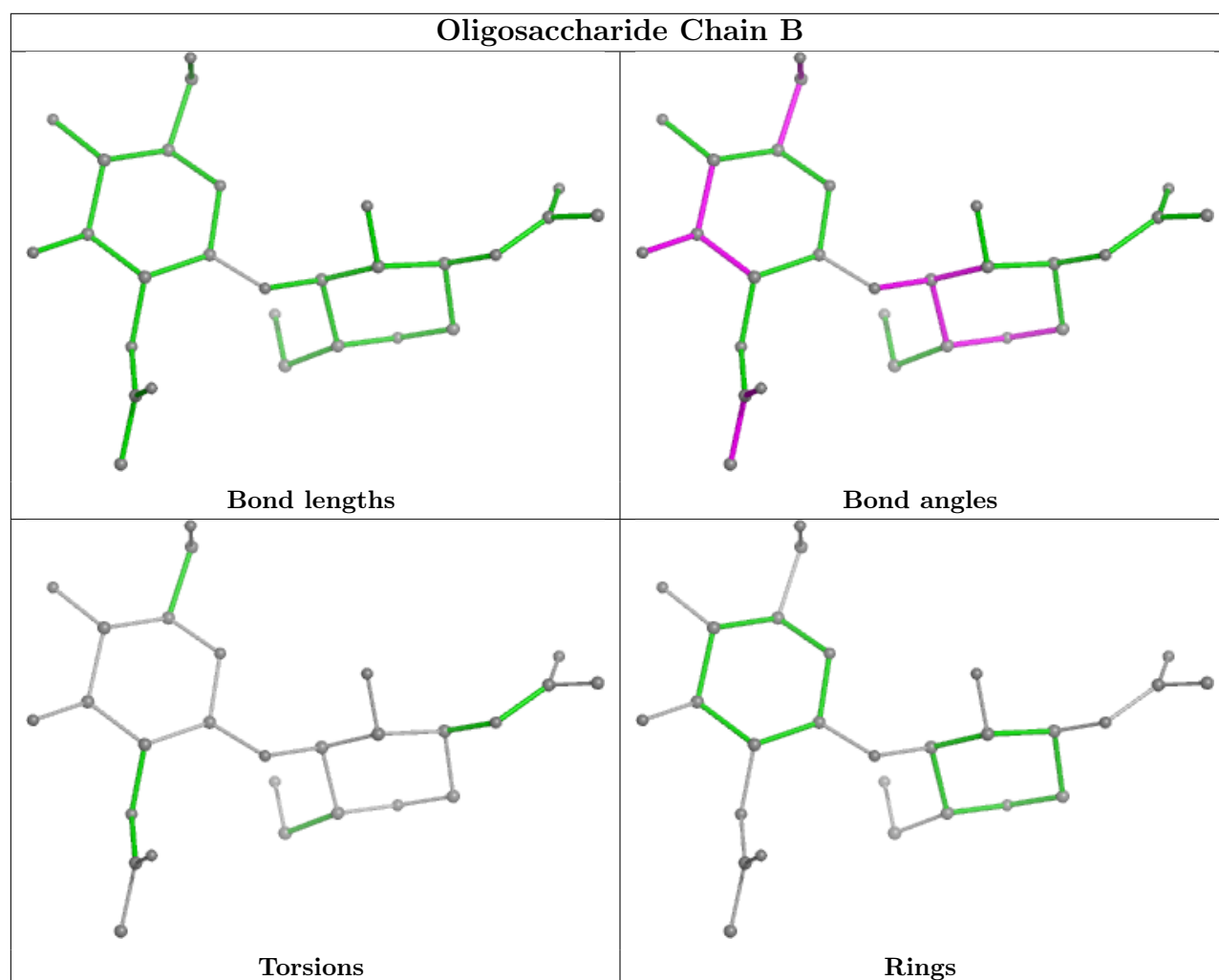
There are no chirality outliers.

There are no torsion outliers.

There are no ring outliers.

No monomer is involved in short contacts.

The following is a two-dimensional graphical depiction of Mogul quality analysis of bond lengths, bond angles, torsion angles, and ring geometry for oligosaccharide.



## 5.6 Ligand geometry

Of 10 ligands modelled in this entry, 6 are monoatomic - leaving 4 for Mogul analysis.

In the following table, the Counts columns list the number of bonds (or angles) for which Mogul statistics could be retrieved, the number of bonds (or angles) that are observed in the model and the number of bonds (or angles) that are defined in the Chemical Component Dictionary. The Link column lists molecule types, if any, to which the group is linked. The Z score for a bond length (or angle) is the number of standard deviations the observed value is removed from the expected value. A bond length (or angle) with  $|Z| > 2$  is considered an outlier worth inspection. RMSZ is the root-mean-square of all Z scores of the bond lengths (or angles).

Mol	Type	Chain	Res	Link	Bond lengths			Bond angles		
					Counts	RMSZ	# Z  > 2	Counts	RMSZ	# Z  > 2
3	NAG	A	501	1	14,14,15	0.62	0	17,19,21	2.03	5 (29%)
4	GOL	A	506	-	5,5,5	1.07	0	5,5,5	0.77	0
3	NAG	A	502	1	14,14,15	0.50	0	17,19,21	1.62	4 (23%)
4	GOL	A	505	-	5,5,5	0.68	0	5,5,5	0.69	0

In the following table, the Chirals column lists the number of chiral outliers, the number of chiral centers analysed, the number of these observed in the model and the number defined in the Chemical Component Dictionary. Similar counts are reported in the Torsion and Rings columns. '-' means no outliers of that kind were identified.

Mol	Type	Chain	Res	Link	Chirals	Torsions	Rings
3	NAG	A	501	1	-	2/6/23/26	0/1/1/1
4	GOL	A	506	-	-	1/4/4/4	-
3	NAG	A	502	1	-	0/6/23/26	0/1/1/1
4	GOL	A	505	-	-	2/4/4/4	-

There are no bond length outliers.

All (9) bond angle outliers are listed below:

Mol	Chain	Res	Type	Atoms	Z	Observed(°)	Ideal(°)
3	A	501	NAG	O5-C5-C6	4.56	114.35	107.20
3	A	501	NAG	C2-N2-C7	4.37	129.12	122.90
3	A	502	NAG	C3-C4-C5	-3.43	104.13	110.24
3	A	501	NAG	C1-C2-N2	-2.65	105.95	110.49
3	A	502	NAG	O4-C4-C5	2.51	115.54	109.30
3	A	502	NAG	C1-C2-N2	-2.26	106.63	110.49
3	A	501	NAG	C4-C3-C2	2.12	114.13	111.02
3	A	502	NAG	C2-N2-C7	-2.09	119.92	122.90
3	A	501	NAG	O4-C4-C3	2.06	115.10	110.35

There are no chirality outliers.

All (5) torsion outliers are listed below:

Mol	Chain	Res	Type	Atoms
3	A	501	NAG	O5-C5-C6-O6
3	A	501	NAG	C4-C5-C6-O6
4	A	505	GOL	C1-C2-C3-O3
4	A	506	GOL	C1-C2-C3-O3
4	A	505	GOL	O2-C2-C3-O3

There are no ring outliers.

No monomer is involved in short contacts.

## 5.7 Other polymers [i](#)

There are no such residues in this entry.

## 5.8 Polymer linkage issues [i](#)

There are no chain breaks in this entry.

## 6 Fit of model and data

### 6.1 Protein, DNA and RNA chains

In the following table, the column labelled ‘#RSRZ> 2’ contains the number (and percentage) of RSRZ outliers, followed by percent RSRZ outliers for the chain as percentile scores relative to all X-ray entries and entries of similar resolution. The OWAB column contains the minimum, median, 95<sup>th</sup> percentile and maximum values of the occupancy-weighted average B-factor per residue. The column labelled ‘Q< 0.9’ lists the number of (and percentage) of residues with an average occupancy less than 0.9.

Mol	Chain	Analysed	<RSRZ>	#RSRZ>2	OWAB(Å <sup>2</sup> )	Q<0.9
1	A	497/497 (100%)	-0.48	5 (1%) 79 84	10, 17, 30, 82	9 (1%)

All (5) RSRZ outliers are listed below:

Mol	Chain	Res	Type	RSRZ
1	A	494	PRO	4.3
1	A	495	GLY	3.5
1	A	493	THR	2.9
1	A	297	PRO	2.8
1	A	296	GLY	2.5

### 6.2 Non-standard residues in protein, DNA, RNA chains

In the following table, the Atoms column lists the number of modelled atoms in the group and the number defined in the chemical component dictionary. The B-factors column lists the minimum, median, 95<sup>th</sup> percentile and maximum values of B factors of atoms in the group. The column labelled ‘Q< 0.9’ lists the number of atoms with occupancy less than 0.9.

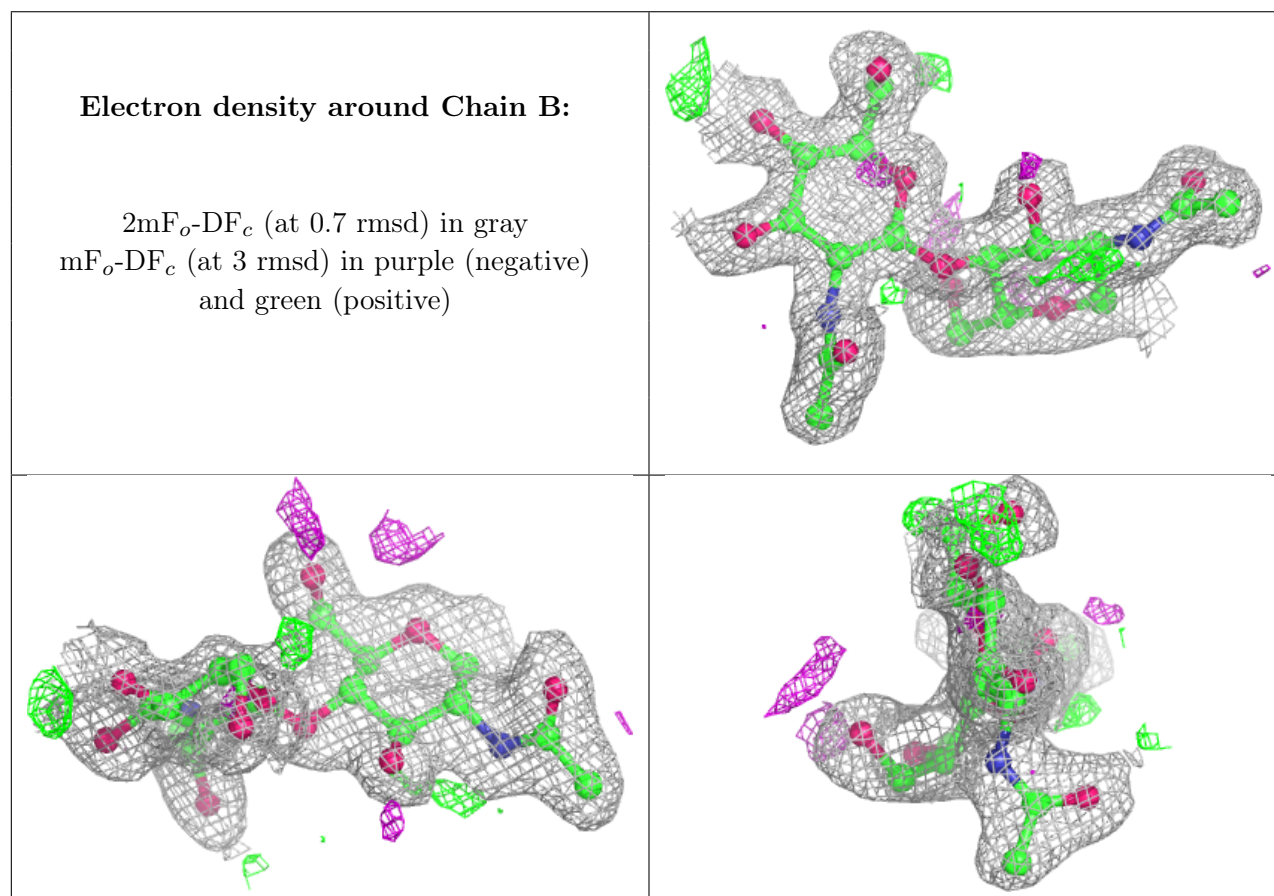
Mol	Type	Chain	Res	Atoms	RSCC	RSR	B-factors(Å <sup>2</sup> )	Q<0.9
3	NAG	A	501	14/15	0.83	0.12	42,47,52,57	0
3	NAG	A	502	14/15	0.90	0.09	36,41,45,47	0
2	NAG	B	2	14/15	0.92	0.09	22,29,39,39	0
2	NAG	B	1	14/15	0.97	0.05	17,19,25,25	0

### 6.3 Carbohydrates

In the following table, the Atoms column lists the number of modelled atoms in the group and the number defined in the chemical component dictionary. The B-factors column lists the minimum, median, 95<sup>th</sup> percentile and maximum values of B factors of atoms in the group. The column labelled ‘Q< 0.9’ lists the number of atoms with occupancy less than 0.9.

Mol	Type	Chain	Res	Atoms	RSCC	RSR	B-factors( $\text{\AA}^2$ )	Q<0.9
2	NAG	B	2	14/15	0.92	0.09	22,29,39,39	0
2	NAG	B	1	14/15	0.97	0.05	17,19,25,25	0

The following is a graphical depiction of the model fit to experimental electron density for oligosaccharide. Each fit is shown from different orientation to approximate a three-dimensional view.



## 6.4 Ligands ⓘ

In the following table, the Atoms column lists the number of modelled atoms in the group and the number defined in the chemical component dictionary. The B-factors column lists the minimum, median, 95<sup>th</sup> percentile and maximum values of B factors of atoms in the group. The column labelled 'Q< 0.9' lists the number of atoms with occupancy less than 0.9.

Mol	Type	Chain	Res	Atoms	RSCC	RSR	B-factors( $\text{\AA}^2$ )	Q<0.9
3	NAG	A	501	14/15	0.83	0.12	42,47,52,57	0
3	NAG	A	502	14/15	0.90	0.09	36,41,45,47	0
4	GOL	A	506	6/6	0.93	0.09	18,25,27,30	0
4	GOL	A	505	6/6	0.97	0.07	17,22,27,30	0
6	ZN	A	512	1/1	0.99	0.02	21,21,21,21	1
5	CU	A	508	1/1	1.00	0.02	16,16,16,16	1

*Continued on next page...*

*Continued from previous page...*

Mol	Type	Chain	Res	Atoms	RSCC	RSR	B-factors( $\text{\AA}^2$ )	Q<0.9
5	CU	A	509	1/1	1.00	0.01	14,14,14,14	1
5	CU	A	510	1/1	1.00	0.02	15,15,15,15	1
6	ZN	A	511	1/1	1.00	0.05	23,23,23,23	0
5	CU	A	507	1/1	1.00	0.04	14,14,14,14	1

## 6.5 Other polymers [i](#)

There are no such residues in this entry.