



Full wwPDB EM Validation Report ⓘ

May 27, 2024 – 01:35 PM JST

PDB ID : 7EU1
EMDB ID : EMD-31306
Title : The cryo-EM structure of *A. thaliana* Pol IV-RDR2 holoenzyme
Authors : Fang, C.L.; Wu, X.X.; Huang, K.; Zhang, Y.
Deposited on : 2021-05-15
Resolution : 3.86 Å(reported)

This is a Full wwPDB EM Validation Report for a publicly released PDB entry.

We welcome your comments at validation@mail.wwpdb.org

A user guide is available at

<https://www.wwpdb.org/validation/2017/EMValidationReportHelp>

with specific help available everywhere you see the ⓘ symbol.

The types of validation reports are described at

<http://www.wwpdb.org/validation/2017/FAQs#types>.

The following versions of software and data (see [references ⓘ](#)) were used in the production of this report:

EMDB validation analysis : 0.0.1.dev92
MolProbity : 4.02b-467
Percentile statistics : 20191225.v01 (using entries in the PDB archive December 25th 2019)
MapQ : 1.9.13
Ideal geometry (proteins) : Engh & Huber (2001)
Ideal geometry (DNA, RNA) : Parkinson et al. (1996)
Validation Pipeline (wwPDB-VP) : 2.36.2

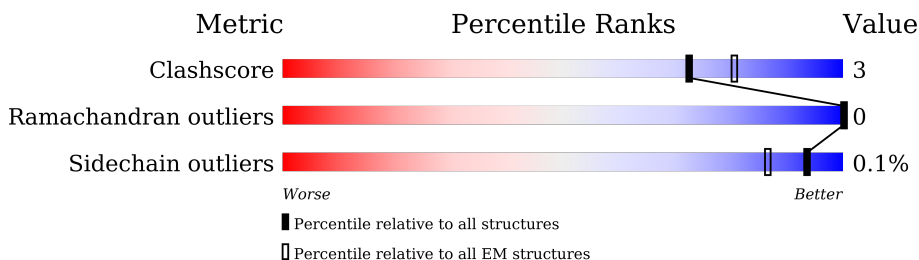
1 Overall quality at a glance

The following experimental techniques were used to determine the structure:

ELECTRON MICROSCOPY

The reported resolution of this entry is 3.86 Å.

Percentile scores (ranging between 0-100) for global validation metrics of the entry are shown in the following graphic. The table shows the number of entries on which the scores are based.



Metric	Whole archive (#Entries)	EM structures (#Entries)
Clashscore	158937	4297
Ramachandran outliers	154571	4023
Sidechain outliers	154315	3826

The table below summarises the geometric issues observed across the polymeric chains and their fit to the map. The red, orange, yellow and green segments of the bar indicate the fraction of residues that contain outliers for ≥ 3 , 2, 1 and 0 types of geometric quality criteria respectively. A grey segment represents the fraction of residues that are not modelled. The numeric value for each fraction is indicated below the corresponding segment, with a dot representing fractions $\leq 5\%$. The upper red bar (where present) indicates the fraction of residues that have poor fit to the EM map (all-atom inclusion $< 40\%$). The numeric value is given above the bar.

Mol	Chain	Length	Quality of chain
1	A	1510	 10% 65% 6% 29%
2	B	1172	 5% 81% 10% 8%
3	C	319	 1% 83% 8% 9%
4	E	205	 13% 92% 5% .
5	F	144	 6% 53% . 47%
6	H	146	 10% 86% 12% .
7	I	114	 13% 89% 10% .
8	J	71	 79% 8% 13%

Continued on next page...

Continued from previous page...

Mol	Chain	Length	Quality of chain
9	K	116	<p>83% 16%</p>
10	L	51	<p>84% 12%</p>
11	M	1133	<p>17% 86% 7% 7%</p>

2 Entry composition

There are 13 unique types of molecules in this entry. The entry contains 31760 atoms, of which 0 are hydrogens and 0 are deuteriums.

In the tables below, the AltConf column contains the number of residues with at least one atom in alternate conformation and the Trace column contains the number of residues modelled with at most 2 atoms.

- Molecule 1 is a protein called DNA-directed RNA polymerase IV subunit 1.

Mol	Chain	Residues	Atoms					AltConf	Trace
1	A	1065	Total	C	N	O	S	0	0
			7701	4882	1331	1441	47		

- Molecule 2 is a protein called DNA-directed RNA polymerases IV and V subunit 2.

Mol	Chain	Residues	Atoms					AltConf	Trace
2	B	1073	Total	C	N	O	S	0	0
			8170	5193	1455	1472	50		

- Molecule 3 is a protein called DNA-directed RNA polymerases II, IV and V subunit 3.

Mol	Chain	Residues	Atoms					AltConf	Trace
3	C	289	Total	C	N	O	S	0	0
			2194	1388	373	420	13		

- Molecule 4 is a protein called DNA-directed RNA polymerases II and IV subunit 5A.

Mol	Chain	Residues	Atoms					AltConf	Trace
4	E	199	Total	C	N	O	S	0	0
			1526	974	270	275	7		

- Molecule 5 is a protein called DNA-directed RNA polymerases II, IV and V subunit 6A.

Mol	Chain	Residues	Atoms					AltConf	Trace
5	F	77	Total	C	N	O	S	0	0
			616	392	106	114	4		

- Molecule 6 is a protein called DNA-directed RNA polymerases II, IV and V subunit 8B.

Mol	Chain	Residues	Atoms					AltConf	Trace
6	H	142	Total	C	N	O	S	0	0
			1036	677	169	183	7		

- Molecule 7 is a protein called DNA-directed RNA polymerases II, IV and V subunit 9A.

Mol	Chain	Residues	Atoms					AltConf	Trace
7	I	113	Total	C	N	O	S	0	0
			808	500	151	146	11		

- Molecule 8 is a protein called DNA-directed RNA polymerases II, IV and V subunit 10.

Mol	Chain	Residues	Atoms					AltConf	Trace
8	J	62	Total	C	N	O	S	0	0
			503	325	85	86	7		

- Molecule 9 is a protein called DNA-directed RNA polymerases II, IV and V subunit 11.

Mol	Chain	Residues	Atoms					AltConf	Trace
9	K	97	Total	C	N	O	S	0	0
			737	471	127	137	2		

- Molecule 10 is a protein called DNA-directed RNA polymerases II, IV and V subunit 12.

Mol	Chain	Residues	Atoms					AltConf	Trace
10	L	45	Total	C	N	O	S	0	0
			333	204	63	62	4		

- Molecule 11 is a protein called RNA-dependent RNA polymerase 2.

Mol	Chain	Residues	Atoms					AltConf	Trace
11	M	1055	Total	C	N	O	S	0	0
			8126	5191	1378	1507	50		

- Molecule 12 is ZINC ION (three-letter code: ZN) (formula: Zn).

Mol	Chain	Residues	Atoms		AltConf
12	A	2	Total	Zn	0
			2	2	
12	B	1	Total	Zn	0
			1	1	
12	C	1	Total	Zn	0
			1	1	
12	I	2	Total	Zn	0
			2	2	
12	J	1	Total	Zn	0
			1	1	

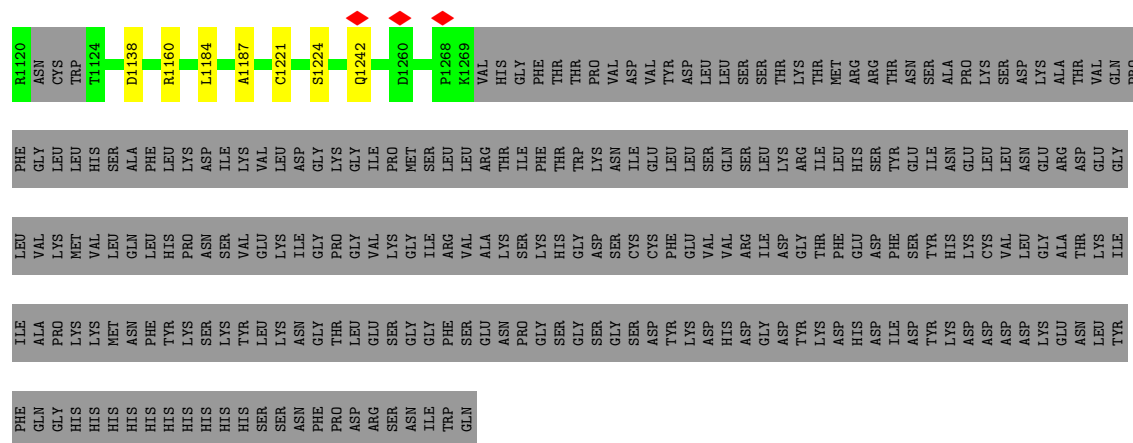
Continued on next page...

Continued from previous page...

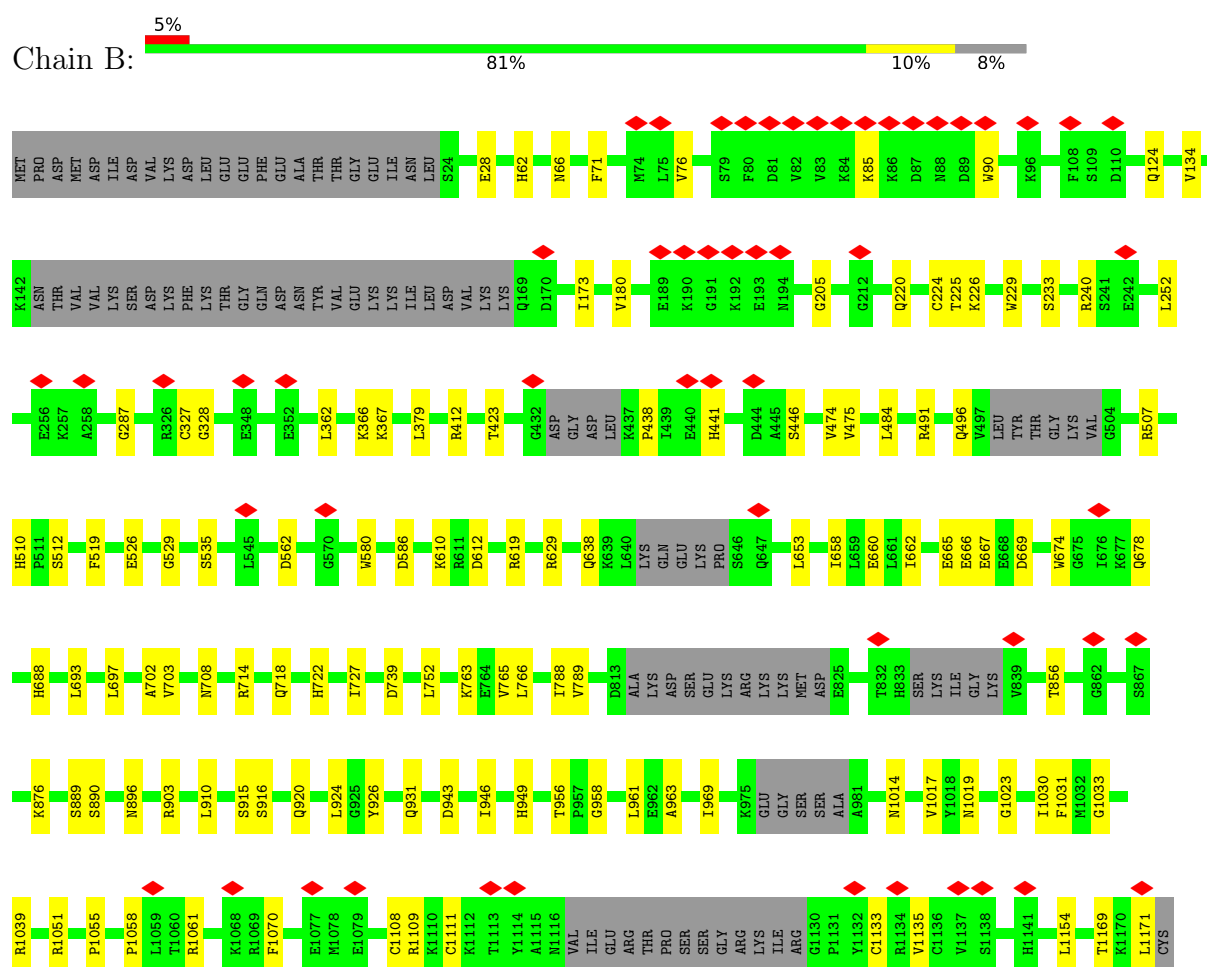
Mol	Chain	Residues	Atoms		AltConf
12	L	1	Total	Zn	0
			1	1	

- Molecule 13 is MAGNESIUM ION (three-letter code: MG) (formula: Mg).

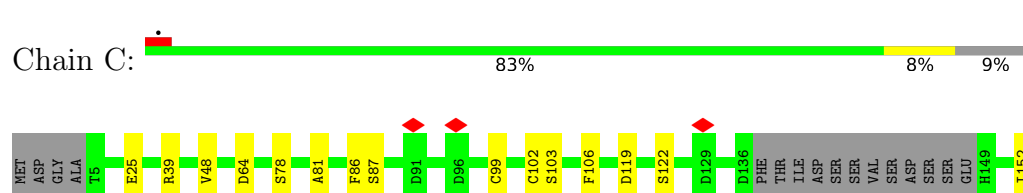
Mol	Chain	Residues	Atoms		AltConf
13	A	1	Total	Mg	0
			1	1	
13	M	1	Total	Mg	0
			1	1	

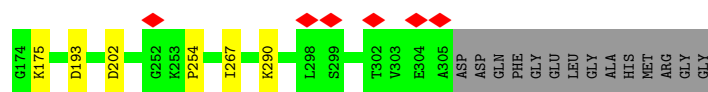


• Molecule 2: DNA-directed RNA polymerases IV and V subunit 2

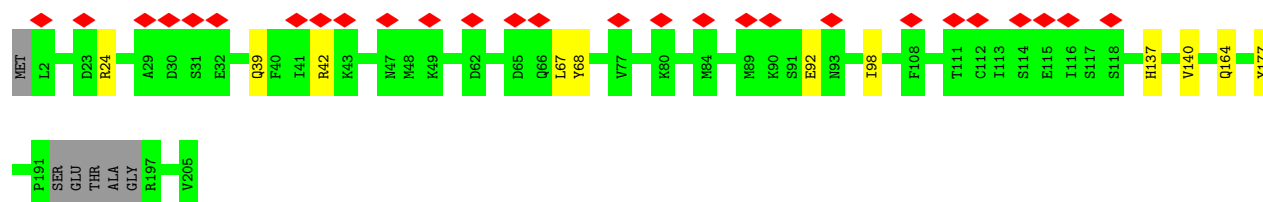


• Molecule 3: DNA-directed RNA polymerases II, IV and V subunit 3

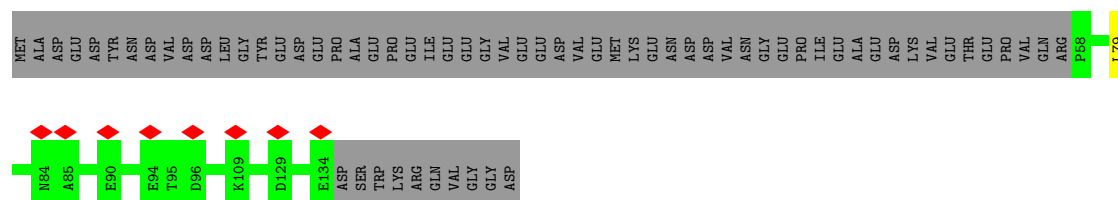




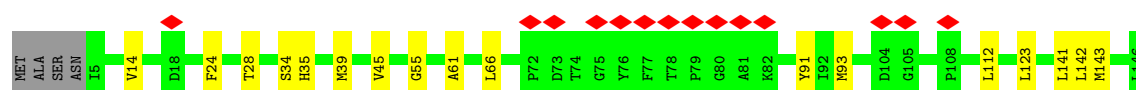
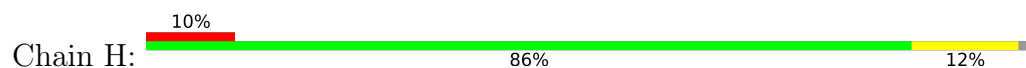
- Molecule 4: DNA-directed RNA polymerases II and IV subunit 5A



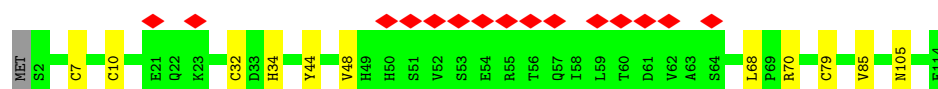
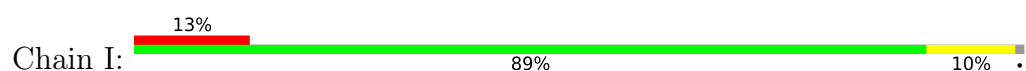
- Molecule 5: DNA-directed RNA polymerases II, IV and V subunit 6A



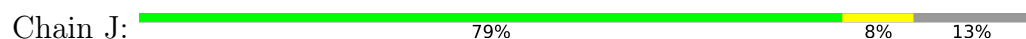
- Molecule 6: DNA-directed RNA polymerases II, IV and V subunit 8B



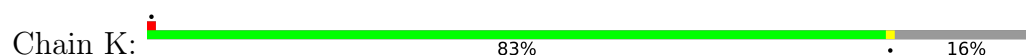
- Molecule 7: DNA-directed RNA polymerases II, IV and V subunit 9A

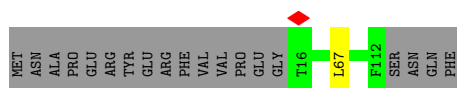


- Molecule 8: DNA-directed RNA polymerases II, IV and V subunit 10

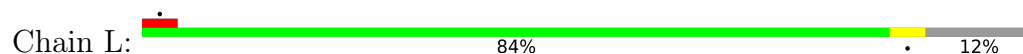


- Molecule 9: DNA-directed RNA polymerases II, IV and V subunit 11

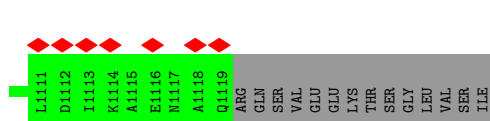
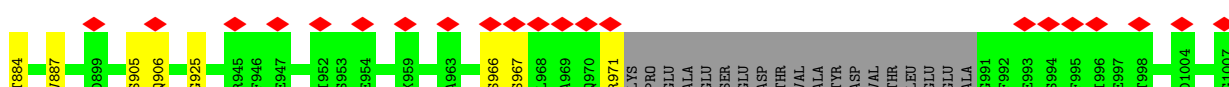
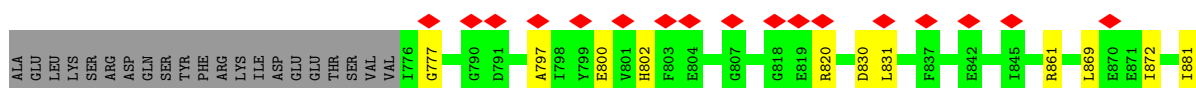
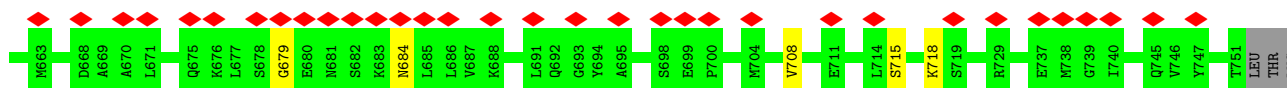
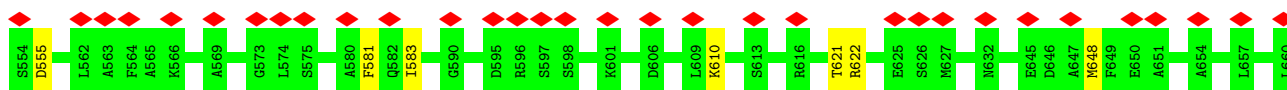
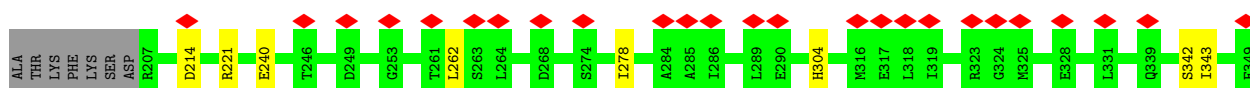
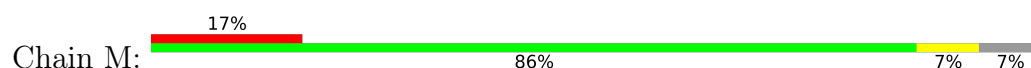




- Molecule 10: DNA-directed RNA polymerases II, IV and V subunit 12



- Molecule 11: RNA-dependent RNA polymerase 2



4 Experimental information

Property	Value	Source
EM reconstruction method	SINGLE PARTICLE	Depositor
Imposed symmetry	POINT, Not provided	
Number of particles used	132247	Depositor
Resolution determination method	FSC 0.143 CUT-OFF	Depositor
CTF correction method	NONE	Depositor
Microscope	FEI TITAN KRIOS	Depositor
Voltage (kV)	300	Depositor
Electron dose ($e^-/\text{\AA}^2$)	58.8	Depositor
Minimum defocus (nm)	Not provided	
Maximum defocus (nm)	Not provided	
Magnification	Not provided	
Image detector	GATAN K3 BIOQUANTUM (6k x 4k)	Depositor
Maximum map value	0.131	Depositor
Minimum map value	-0.079	Depositor
Average map value	0.000	Depositor
Map value standard deviation	0.004	Depositor
Recommended contour level	0.015	Depositor
Map size (\AA)	273.92, 273.92, 273.92	wwPDB
Map dimensions	256, 256, 256	wwPDB
Map angles ($^\circ$)	90.0, 90.0, 90.0	wwPDB
Pixel spacing (\AA)	1.07, 1.07, 1.07	Depositor

5 Model quality

5.1 Standard geometry

Bond lengths and bond angles in the following residue types are not validated in this section: ZN, MG

The Z score for a bond length (or angle) is the number of standard deviations the observed value is removed from the expected value. A bond length (or angle) with $|Z| > 5$ is considered an outlier worth inspection. RMSZ is the root-mean-square of all Z scores of the bond lengths (or angles).

Mol	Chain	Bond lengths		Bond angles	
		RMSZ	# Z >5	RMSZ	# Z >5
1	A	0.25	0/7842	0.48	1/10668 (0.0%)
2	B	0.25	0/8337	0.47	1/11276 (0.0%)
3	C	0.25	0/2224	0.48	0/3011
4	E	0.25	0/1548	0.46	0/2100
5	F	0.26	0/627	0.47	0/844
6	H	0.27	0/1056	0.53	0/1429
7	I	0.26	0/824	0.48	0/1122
8	J	0.23	0/511	0.42	0/690
9	K	0.24	0/751	0.43	0/1021
10	L	0.23	0/337	0.46	0/455
11	M	0.25	0/8297	0.48	0/11252
All	All	0.25	0/32354	0.48	2/43868 (0.0%)

There are no bond length outliers.

All (2) bond angle outliers are listed below:

Mol	Chain	Res	Type	Atoms	Z	Observed(°)	Ideal(°)
1	A	764	LEU	CA-CB-CG	6.06	129.24	115.30
2	B	1171	LEU	CA-CB-CG	5.20	127.27	115.30

There are no chirality outliers.

There are no planarity outliers.

5.2 Too-close contacts

In the following table, the Non-H and H(model) columns list the number of non-hydrogen atoms and hydrogen atoms in the chain respectively. The H(added) column lists the number of hydrogen atoms added and optimized by MolProbity. The Clashes column lists the number of clashes within the asymmetric unit, whereas Symm-Clashes lists symmetry-related clashes.

Mol	Chain	Non-H	H(model)	H(added)	Clashes	Symm-Clashes
1	A	7701	0	7224	54	0
2	B	8170	0	7893	77	0
3	C	2194	0	2195	18	0
4	E	1526	0	1476	6	0
5	F	616	0	617	1	0
6	H	1036	0	965	10	0
7	I	808	0	696	9	0
8	J	503	0	516	3	0
9	K	737	0	689	1	0
10	L	333	0	290	1	0
11	M	8126	0	7836	44	0
12	A	2	0	0	0	0
12	B	1	0	0	0	0
12	C	1	0	0	0	0
12	I	2	0	0	0	0
12	J	1	0	0	0	0
12	L	1	0	0	0	0
13	A	1	0	0	0	0
13	M	1	0	0	0	0
All	All	31760	0	30397	211	0

The all-atom clashscore is defined as the number of clashes found per 1000 atoms (including hydrogen atoms). The all-atom clashscore for this structure is 3.

All (211) close contacts within the same asymmetric unit are listed below, sorted by their clash magnitude.

Atom-1	Atom-2	Interatomic distance (Å)	Clash overlap (Å)
7:I:7:CYS:SG	7:I:10:CYS:HB3	2.00	1.01
2:B:1133:CYS:SG	2:B:1135:VAL:HG12	2.03	0.98
2:B:1133:CYS:SG	2:B:1135:VAL:CG1	2.52	0.97
2:B:1133:CYS:SG	2:B:1135:VAL:HG13	2.24	0.75
2:B:1108:CYS:SG	2:B:1133:CYS:HB2	2.26	0.75
3:C:86:PHE:O	3:C:102:CYS:SG	2.50	0.69
3:C:87:SER:HA	3:C:102:CYS:SG	2.33	0.68
11:M:1084:TYR:O	11:M:1088:TYR:HB2	1.99	0.63
2:B:1108:CYS:HG	2:B:1133:CYS:CB	2.14	0.61
2:B:1108:CYS:SG	2:B:1133:CYS:CB	2.91	0.58
1:A:708:TYR:HH	1:A:746:CYS:HG	1.52	0.57
11:M:621:THR:HG23	11:M:622:ARG:HG2	1.86	0.57
2:B:1108:CYS:HG	2:B:1133:CYS:HB2	1.68	0.56
11:M:555:ASP:HB3	11:M:831:LEU:HB2	1.87	0.56
11:M:155:LYS:HB3	11:M:192:PHE:HB2	1.87	0.56

Continued on next page...

Continued from previous page...

Atom-1	Atom-2	Interatomic distance (Å)	Clash overlap (Å)
2:B:963:ALA:HB1	2:B:1033:GLY:HA3	1.88	0.55
7:I:70:ARG:HG3	7:I:85:VAL:HG12	1.88	0.55
11:M:142:ARG:HA	11:M:159:ARG:HA	1.89	0.55
1:A:504:LYS:NZ	1:A:544:MET:SD	2.79	0.55
11:M:145:PHE:HB2	11:M:156:ILE:HB	1.89	0.55
1:A:1160:ARG:HH11	1:A:1184:LEU:HD22	1.71	0.55
1:A:281:SER:HG	1:A:1224:SER:HG	1.53	0.54
2:B:438:PRO:HB2	2:B:441:HIS:HB3	1.88	0.54
6:H:91:TYR:HB3	6:H:143:MET:HB3	1.90	0.54
1:A:1049:VAL:HG11	1:A:1063:ILE:HD11	1.89	0.54
2:B:931:GLN:HB2	3:C:39:ARG:HG2	1.90	0.54
11:M:167:LEU:HD22	11:M:262:LEU:HD22	1.89	0.54
2:B:1108:CYS:CB	2:B:1111:CYS:SG	2.95	0.54
1:A:658:GLN:HE22	1:A:690:ARG:HH11	1.55	0.53
11:M:800:GLU:HG3	11:M:802:HIS:H	1.72	0.53
4:E:24:ARG:NH2	4:E:177:TYR:O	2.41	0.53
1:A:804:LEU:HB2	2:B:708:ASN:HB2	1.91	0.53
2:B:1019:ASN:HB3	2:B:1023:GLY:H	1.73	0.53
1:A:965:ILE:H	7:I:44:TYR:HB3	1.74	0.53
3:C:48:VAL:HG22	3:C:78:SER:HB3	1.89	0.53
6:H:93:MET:HB2	6:H:141:LEU:HB3	1.90	0.53
1:A:857:GLN:HG2	4:E:164:GLN:HA	1.91	0.53
3:C:25:GLU:HG2	3:C:267:ILE:HG22	1.90	0.53
3:C:86:PHE:C	3:C:102:CYS:SG	2.88	0.52
2:B:1051:ARG:NH2	2:B:1055:PRO:O	2.43	0.52
11:M:861:ARG:NH2	11:M:925:GLY:O	2.43	0.52
1:A:753:ALA:HA	1:A:898:SER:HA	1.91	0.52
2:B:752:LEU:HB3	2:B:969:ILE:HD11	1.90	0.52
11:M:1101:SER:HA	11:M:1104:TRP:HD1	1.75	0.52
3:C:86:PHE:C	3:C:102:CYS:HG	2.12	0.52
2:B:510:HIS:HD2	2:B:512:SER:HB3	1.75	0.51
4:E:39:GLN:HA	4:E:42:ARG:HG2	1.91	0.51
4:E:67:LEU:HD11	4:E:98:ILE:HG12	1.92	0.51
11:M:221:ARG:NH1	11:M:422:GLU:OE2	2.44	0.51
2:B:763:LYS:HG2	2:B:765:VAL:HG12	1.92	0.51
2:B:71:PHE:HZ	2:B:412:ARG:HG3	1.76	0.51
2:B:62:HIS:O	2:B:66:ASN:ND2	2.43	0.51
2:B:362:LEU:HD11	2:B:580:TRP:HB2	1.91	0.51
2:B:788:ILE:HG12	2:B:946:ILE:HG22	1.92	0.51
6:H:66:LEU:HD21	6:H:142:LEU:HD21	1.92	0.51
11:M:777:GLY:HA2	11:M:797:ALA:H	1.75	0.51

Continued on next page...

Continued from previous page...

Atom-1	Atom-2	Interatomic distance (Å)	Clash overlap (Å)
4:E:68:TYR:OH	4:E:92:GLU:OE1	2.28	0.50
2:B:85:LYS:HA	2:B:90:TRP:HB2	1.93	0.50
2:B:1058:PRO:O	2:B:1061:ARG:NH1	2.44	0.50
1:A:54:SER:OG	1:A:55:VAL:N	2.45	0.50
2:B:252:LEU:HB2	2:B:379:LEU:HD21	1.93	0.50
11:M:479:LEU:O	11:M:482:ASN:ND2	2.45	0.50
1:A:428:LEU:HD12	9:K:67:LEU:HG	1.94	0.49
2:B:327:CYS:SG	2:B:328:GLY:N	2.85	0.49
2:B:491:ARG:NH1	2:B:535:SER:O	2.45	0.49
2:B:1055:PRO:HD2	2:B:1070:PHE:HB2	1.93	0.49
2:B:367:LYS:HE2	2:B:562:ASP:HB3	1.94	0.49
2:B:958:GLY:HA2	2:B:961:LEU:HB2	1.95	0.49
6:H:112:LEU:HB3	6:H:123:LEU:HB3	1.93	0.49
2:B:484:LEU:HD13	2:B:766:LEU:HB2	1.95	0.49
3:C:78:SER:HB2	3:C:81:ALA:HB2	1.95	0.49
11:M:133:ARG:HB3	11:M:146:TRP:HB2	1.95	0.48
11:M:1108:ASP:N	11:M:1108:ASP:OD1	2.46	0.48
2:B:739:ASP:OD1	2:B:739:ASP:N	2.46	0.48
2:B:674:TRP:HB3	2:B:693:LEU:HD11	1.96	0.48
2:B:890:SER:HB2	2:B:896:ASN:HD22	1.77	0.48
1:A:471:VAL:O	1:A:476:GLN:NE2	2.44	0.48
3:C:99:CYS:SG	3:C:103:SER:N	2.87	0.48
7:I:7:CYS:CB	7:I:10:CYS:HB3	2.43	0.48
11:M:278:ILE:HD12	11:M:391:ILE:HD12	1.94	0.48
1:A:833:ARG:NH2	1:A:1221:CYS:O	2.47	0.48
11:M:434:SER:OG	11:M:447:ARG:NH2	2.46	0.48
2:B:669:ASP:N	2:B:669:ASP:OD1	2.46	0.47
3:C:193:ASP:OD1	3:C:193:ASP:N	2.47	0.47
2:B:586:ASP:N	2:B:586:ASP:OD1	2.47	0.47
1:A:410:ASN:HB3	1:A:454:HIS:HB2	1.96	0.47
1:A:526:PRO:O	1:A:545:GLN:NE2	2.46	0.47
6:H:34:SER:HB3	6:H:39:MET:H	1.79	0.47
1:A:817:ARG:NH2	2:B:519:PHE:O	2.47	0.47
1:A:1160:ARG:HG3	1:A:1187:ALA:HB1	1.96	0.47
11:M:708:VAL:HG11	11:M:1023:GLU:HG3	1.96	0.47
1:A:329:ASP:HB2	1:A:435:SER:HB2	1.96	0.47
2:B:507:ARG:NH1	2:B:526:GLU:O	2.48	0.47
3:C:106:PHE:HB2	3:C:167:ALA:HB3	1.97	0.47
1:A:326:VAL:HG23	1:A:434:VAL:HG23	1.97	0.47
3:C:119:ASP:HB3	3:C:156:LYS:HG2	1.96	0.47
1:A:994:LYS:O	1:A:1077:LYS:NZ	2.48	0.46

Continued on next page...

Continued from previous page...

Atom-1	Atom-2	Interatomic distance (Å)	Clash overlap (Å)
2:B:915:SER:OG	2:B:916:SER:N	2.47	0.46
3:C:173:ILE:HG22	3:C:175:LYS:H	1.79	0.46
11:M:679:GLY:O	11:M:684:ASN:ND2	2.48	0.46
6:H:14:VAL:HB	6:H:55:GLY:H	1.80	0.46
1:A:639:LEU:HD21	1:A:745:MET:HG2	1.97	0.46
8:J:9:THR:HB	8:J:44:CYS:SG	2.56	0.46
8:J:14:ILE:HG22	8:J:17:LYS:HD2	1.98	0.46
11:M:43:GLU:OE1	11:M:58:ARG:NH1	2.49	0.46
2:B:287:GLY:HA2	2:B:366:LYS:HG2	1.98	0.46
2:B:910:LEU:HA	2:B:924:LEU:HD22	1.98	0.46
3:C:202:ASP:OD1	3:C:202:ASP:N	2.49	0.46
10:L:11:VAL:HG12	10:L:18:GLU:HG3	1.98	0.46
11:M:648:MET:SD	11:M:648:MET:N	2.81	0.45
2:B:224:CYS:H	2:B:229:TRP:HZ2	1.64	0.45
11:M:551:TYR:OH	11:M:820:ARG:NE	2.49	0.45
3:C:122:SER:HB3	3:C:152:ILE:HB	1.97	0.45
1:A:439:ILE:HD11	1:A:489:LEU:HA	1.99	0.45
2:B:76:VAL:HG22	2:B:423:THR:HG23	1.99	0.45
1:A:769:TRP:HE1	1:A:807:LEU:HD22	1.82	0.45
1:A:764:LEU:HB2	1:A:807:LEU:HD23	1.99	0.45
2:B:610:LYS:HD2	2:B:665:GLU:HB3	1.99	0.45
1:A:485:ASN:HD21	1:A:587:ASN:HD21	1.64	0.45
2:B:474:VAL:HG23	2:B:475:VAL:HG23	1.98	0.44
1:A:408:LEU:HB2	1:A:456:TYR:HB2	1.97	0.44
2:B:612:ASP:OD2	2:B:619:ARG:NH1	2.50	0.44
11:M:517:ARG:HE	11:M:610:LYS:HD2	1.83	0.44
2:B:1109:ARG:NH2	2:B:1169:THR:OG1	2.50	0.44
6:H:34:SER:OG	6:H:35:HIS:N	2.50	0.44
2:B:226:LYS:H	2:B:240:ARG:HB2	1.83	0.44
11:M:884:THR:HB	11:M:887:VAL:HB	2.00	0.44
1:A:462:GLN:HE22	5:F:79:LEU:HD13	1.82	0.44
7:I:32:CYS:HB3	7:I:34:HIS:HD2	1.83	0.44
2:B:703:VAL:HG11	2:B:766:LEU:HD11	2.00	0.44
11:M:830:ASP:OD1	11:M:830:ASP:N	2.46	0.44
2:B:920:GLN:NE2	2:B:956:THR:OG1	2.44	0.44
1:A:983:HIS:CE1	1:A:1031:CYS:SG	3.10	0.44
6:H:61:ALA:HB3	6:H:142:LEU:HB2	1.99	0.44
1:A:643:ILE:HG13	1:A:745:MET:HB3	2.00	0.43
7:I:68:LEU:O	7:I:70:ARG:NH1	2.51	0.43
11:M:372:ARG:HB3	11:M:378:ILE:HB	2.00	0.43
11:M:581:PHE:HE2	11:M:583:ILE:HD12	1.82	0.43

Continued on next page...

Continued from previous page...

Atom-1	Atom-2	Interatomic distance (Å)	Clash overlap (Å)
1:A:335:ASN:HB3	1:A:473:LEU:HB3	1.99	0.43
1:A:734:LYS:HG3	2:B:949:HIS:HB3	2.00	0.43
2:B:134:VAL:HG22	2:B:173:ILE:HD11	2.01	0.43
3:C:254:PRO:HG3	11:M:80:LEU:HD23	2.01	0.43
1:A:42:VAL:HG11	1:A:254:LYS:HA	2.00	0.43
2:B:856:THR:OG1	2:B:876:LYS:O	2.36	0.43
2:B:507:ARG:HA	2:B:529:GLY:HA3	2.01	0.43
2:B:662:ILE:HG23	2:B:666:GLU:HB3	2.00	0.43
2:B:727:ILE:HD11	2:B:1039:ARG:HD3	1.99	0.43
11:M:180:ALA:HA	11:M:240:GLU:HA	2.01	0.43
1:A:853:SER:OG	1:A:1242:GLN:O	2.37	0.43
1:A:1085:VAL:HG12	1:A:1117:ARG:HA	2.00	0.43
2:B:124:GLN:HA	2:B:889:SER:HB2	2.01	0.43
1:A:831:LEU:HD13	1:A:909:LYS:HG2	2.00	0.42
2:B:446:SER:O	2:B:446:SER:OG	2.37	0.42
2:B:943:ASP:OD1	2:B:943:ASP:N	2.46	0.42
2:B:233:SER:O	2:B:233:SER:OG	2.33	0.42
2:B:789:VAL:HG23	2:B:926:TYR:HB3	2.02	0.42
6:H:28:THR:OG1	6:H:45:VAL:O	2.31	0.42
1:A:761:PRO:HB3	1:A:775:PRO:HD2	2.01	0.42
2:B:28:GLU:OE2	2:B:678:GLN:NE2	2.53	0.42
1:A:313:LEU:HD11	2:B:1154:LEU:HD22	2.00	0.42
1:A:626:ASP:HA	1:A:723:ASN:HD21	1.83	0.42
2:B:220:GLN:HE22	2:B:496:GLN:HE21	1.67	0.42
2:B:1108:CYS:HB2	2:B:1111:CYS:SG	2.59	0.42
1:A:542:THR:HB	1:A:545:GLN:HB2	2.00	0.42
1:A:661:VAL:HB	1:A:664:TRP:HD1	1.84	0.42
2:B:180:VAL:HG23	2:B:205:GLY:HA2	2.01	0.42
11:M:304:HIS:CD2	11:M:393:LEU:H	2.37	0.42
1:A:399:ARG:NH1	1:A:400:SER:O	2.48	0.42
1:A:721:GLN:NE2	6:H:24:PHE:O	2.53	0.42
11:M:148:TRP:NE1	11:M:153:CYS:SG	2.92	0.42
1:A:722:SER:O	1:A:722:SER:OG	2.36	0.42
1:A:1060:LEU:O	1:A:1064:ARG:HB2	2.20	0.42
7:I:32:CYS:HB3	7:I:34:HIS:CD2	2.55	0.42
11:M:16:ASN:N	11:M:16:ASN:OD1	2.53	0.42
2:B:1017:VAL:HG11	2:B:1030:ILE:HD12	2.02	0.41
11:M:966:SER:O	11:M:966:SER:OG	2.33	0.41
11:M:388:PRO:O	11:M:453:ARG:NH2	2.54	0.41
1:A:277:SER:OG	1:A:278:ARG:N	2.53	0.41
1:A:412:PRO:HA	1:A:413:PRO:HA	1.89	0.41

Continued on next page...

Continued from previous page...

Atom-1	Atom-2	Interatomic distance (Å)	Clash overlap (Å)
2:B:697:LEU:HB2	2:B:702:ALA:HB2	2.02	0.41
1:A:1072:LEU:HD13	7:I:48:VAL:HG21	2.02	0.41
1:A:1138:ASP:OD1	1:A:1138:ASP:N	2.53	0.41
2:B:225:THR:HA	2:B:240:ARG:HG3	2.02	0.41
2:B:653:LEU:HG	2:B:658:ILE:HD11	2.03	0.41
11:M:398:LEU:HD12	11:M:1054:SER:HA	2.01	0.41
2:B:612:ASP:N	2:B:612:ASP:OD1	2.54	0.41
2:B:718:GLN:HG2	2:B:722:HIS:HB2	2.01	0.41
1:A:817:ARG:HD3	1:A:817:ARG:HA	1.87	0.41
2:B:638:GLN:H	2:B:638:GLN:HG3	1.75	0.41
3:C:290:LYS:HB3	3:C:290:LYS:HE2	1.89	0.41
4:E:137:HIS:HB3	4:E:140:VAL:HG12	2.02	0.41
11:M:715:SER:HA	11:M:718:LYS:HE2	2.02	0.41
1:A:497:ALA:O	1:A:501:ASN:ND2	2.44	0.41
1:A:816:SER:O	1:A:816:SER:OG	2.33	0.41
11:M:214:ASP:N	11:M:214:ASP:OD1	2.52	0.41
11:M:342:SER:OG	11:M:343:ILE:N	2.54	0.41
11:M:430:ALA:HA	11:M:881:ILE:HG22	2.03	0.41
11:M:1023:GLU:O	11:M:1027:THR:OG1	2.38	0.41
2:B:714:ARG:HA	2:B:714:ARG:HD3	1.90	0.40
7:I:79:CYS:SG	7:I:105:ASN:ND2	2.95	0.40
11:M:869:LEU:HD12	11:M:872:ILE:HD12	2.03	0.40
1:A:596:ASP:N	1:A:596:ASP:OD1	2.54	0.40
2:B:629:ARG:NH2	2:B:667:GLU:OE2	2.55	0.40
8:J:3:ILE:HD13	8:J:18:TRP:HB2	2.02	0.40
2:B:660:GLU:OE2	2:B:688:HIS:NE2	2.44	0.40
2:B:1014:ASN:HA	2:B:1031:PHE:HA	2.03	0.40
11:M:158:VAL:HG22	11:M:189:PRO:HB3	2.04	0.40
11:M:905:SER:OG	11:M:906:GLN:N	2.54	0.40
1:A:520:CYS:HA	1:A:521:PRO:HD3	1.92	0.40
2:B:903:ARG:NH1	3:C:64:ASP:OD2	2.51	0.40
11:M:967:SER:O	11:M:971:ARG:NH2	2.55	0.40

There are no symmetry-related clashes.

5.3 Torsion angles ⓘ

5.3.1 Protein backbone ⓘ

In the following table, the Percentiles column shows the percent Ramachandran outliers of the chain as a percentile score with respect to all PDB entries followed by that with respect to all EM

entries.

The Analysed column shows the number of residues for which the backbone conformation was analysed, and the total number of residues.

Mol	Chain	Analysed	Favoured	Allowed	Outliers	Percentiles	
1	A	1047/1510 (69%)	992 (95%)	55 (5%)	0	100	100
2	B	1055/1172 (90%)	1015 (96%)	40 (4%)	0	100	100
3	C	285/319 (89%)	269 (94%)	16 (6%)	0	100	100
4	E	195/205 (95%)	190 (97%)	5 (3%)	0	100	100
5	F	75/144 (52%)	72 (96%)	3 (4%)	0	100	100
6	H	140/146 (96%)	130 (93%)	10 (7%)	0	100	100
7	I	111/114 (97%)	102 (92%)	9 (8%)	0	100	100
8	J	60/71 (84%)	56 (93%)	4 (7%)	0	100	100
9	K	95/116 (82%)	93 (98%)	2 (2%)	0	100	100
10	L	43/51 (84%)	39 (91%)	4 (9%)	0	100	100
11	M	1045/1133 (92%)	989 (95%)	56 (5%)	0	100	100
All	All	4151/4981 (83%)	3947 (95%)	204 (5%)	0	100	100

There are no Ramachandran outliers to report.

5.3.2 Protein sidechains ⓘ

In the following table, the Percentiles column shows the percent sidechain outliers of the chain as a percentile score with respect to all PDB entries followed by that with respect to all EM entries.

The Analysed column shows the number of residues for which the sidechain conformation was analysed, and the total number of residues.

Mol	Chain	Analysed	Rotameric	Outliers	Percentiles	
1	A	767/1344 (57%)	765 (100%)	2 (0%)	92	95
2	B	841/1029 (82%)	841 (100%)	0	100	100
3	C	236/280 (84%)	236 (100%)	0	100	100
4	E	151/191 (79%)	151 (100%)	0	100	100
5	F	65/128 (51%)	65 (100%)	0	100	100
6	H	93/127 (73%)	93 (100%)	0	100	100
7	I	75/104 (72%)	75 (100%)	0	100	100

Continued on next page...

Continued from previous page...

Mol	Chain	Analysed	Rotameric	Outliers	Percentiles	
8	J	55/66 (83%)	55 (100%)	0	100	100
9	K	72/105 (69%)	72 (100%)	0	100	100
10	L	30/45 (67%)	30 (100%)	0	100	100
11	M	845/1005 (84%)	845 (100%)	0	100	100
All	All	3230/4424 (73%)	3228 (100%)	2 (0%)	93	97

All (2) residues with a non-rotameric sidechain are listed below:

Mol	Chain	Res	Type
1	A	28	ARG
1	A	263	THR

Sometimes sidechains can be flipped to improve hydrogen bonding and reduce clashes. All (35) such sidechains are listed below:

Mol	Chain	Res	Type
1	A	26	ASN
1	A	70	HIS
1	A	462	GLN
1	A	505	ASN
1	A	638	ASN
1	A	655	ASN
1	A	658	GLN
2	B	51	HIS
2	B	54	ASN
2	B	66	ASN
2	B	220	GLN
2	B	246	ASN
2	B	355	HIS
2	B	450	ASN
2	B	496	GLN
2	B	510	HIS
2	B	711	HIS
2	B	804	GLN
2	B	896	ASN
4	E	102	GLN
4	E	103	GLN
4	E	126	GLN
6	H	42	HIS
6	H	94	HIS
7	I	12	ASN

Continued on next page...

Continued from previous page...

Mol	Chain	Res	Type
7	I	34	HIS
7	I	80	GLN
8	J	39	GLN
11	M	84	HIS
11	M	304	HIS
11	M	482	ASN
11	M	653	GLN
11	M	873	HIS
11	M	1092	HIS
11	M	1119	GLN

5.3.3 RNA [i](#)

There are no RNA molecules in this entry.

5.4 Non-standard residues in protein, DNA, RNA chains [i](#)

There are no non-standard protein/DNA/RNA residues in this entry.

5.5 Carbohydrates [i](#)

There are no monosaccharides in this entry.

5.6 Ligand geometry [i](#)

Of 10 ligands modelled in this entry, 10 are monoatomic - leaving 0 for Mogul analysis.

There are no bond length outliers.

There are no bond angle outliers.

There are no chirality outliers.

There are no torsion outliers.

There are no ring outliers.

No monomer is involved in short contacts.

5.7 Other polymers [i](#)

There are no such residues in this entry.

5.8 Polymer linkage issues ⓘ

There are no chain breaks in this entry.

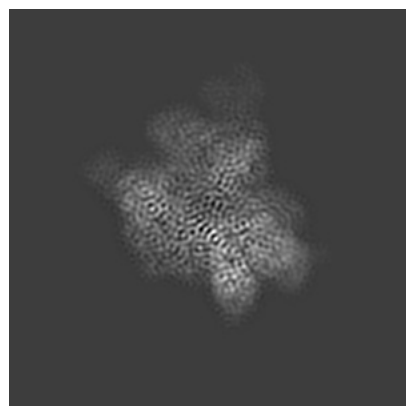
6 Map visualisation [i](#)

This section contains visualisations of the EMDB entry EMD-31306. These allow visual inspection of the internal detail of the map and identification of artifacts.

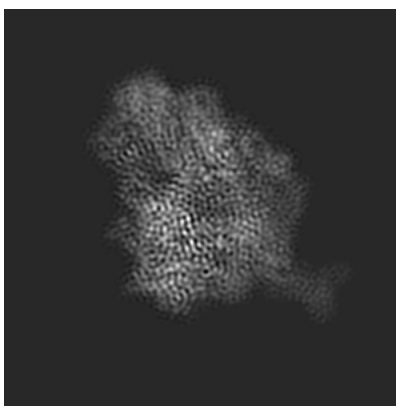
Images derived from a raw map, generated by summing the deposited half-maps, are presented below the corresponding image components of the primary map to allow further visual inspection and comparison with those of the primary map.

6.1 Orthogonal projections [i](#)

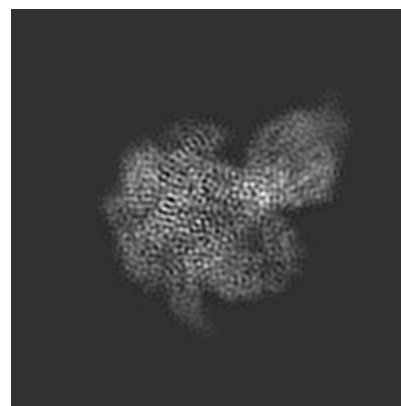
6.1.1 Primary map



X

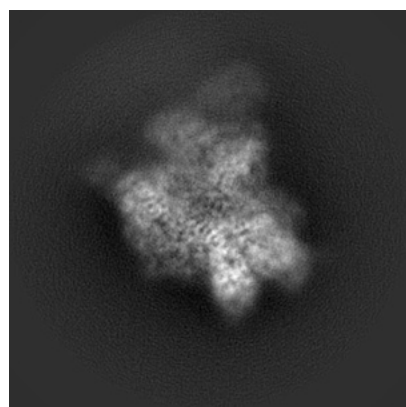


Y

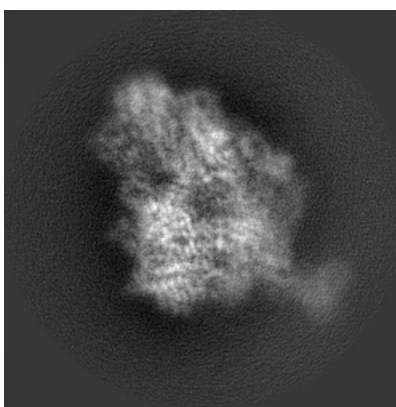


Z

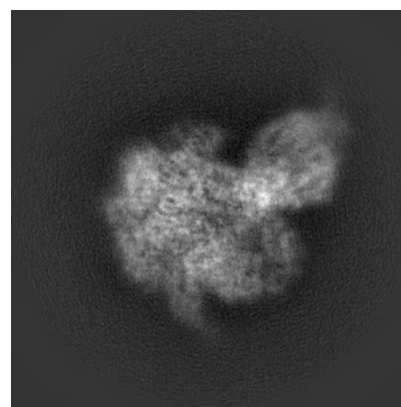
6.1.2 Raw map



X



Y

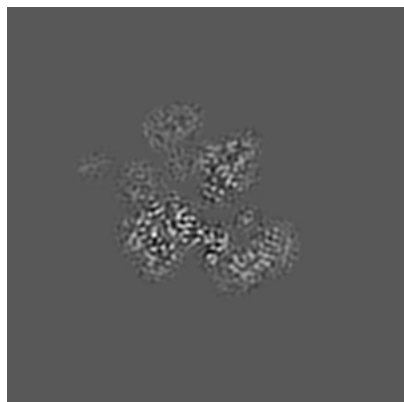


Z

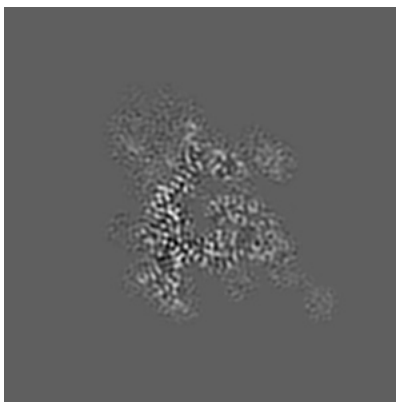
The images above show the map projected in three orthogonal directions.

6.2 Central slices [i](#)

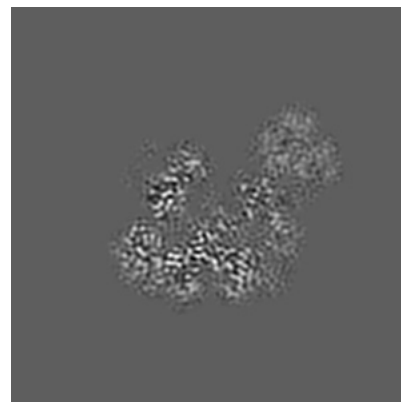
6.2.1 Primary map



X Index: 128

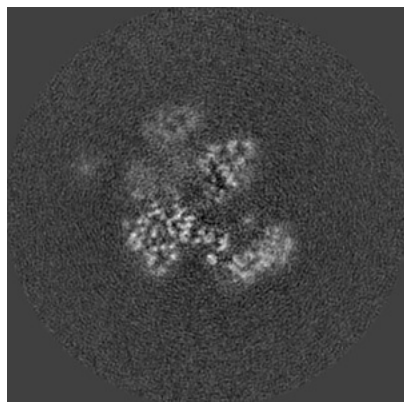


Y Index: 128

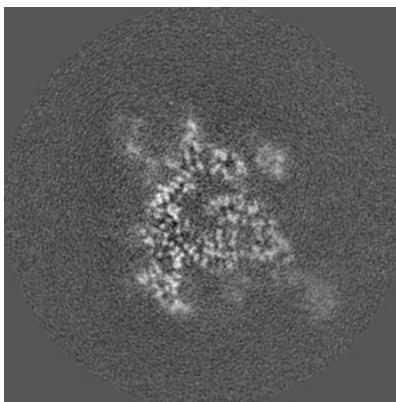


Z Index: 128

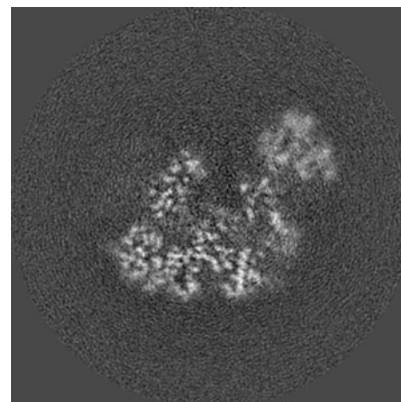
6.2.2 Raw map



X Index: 128



Y Index: 128

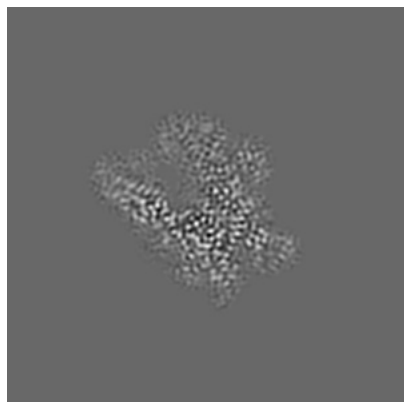


Z Index: 128

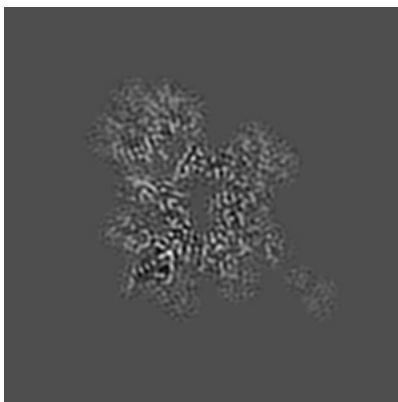
The images above show central slices of the map in three orthogonal directions.

6.3 Largest variance slices [i](#)

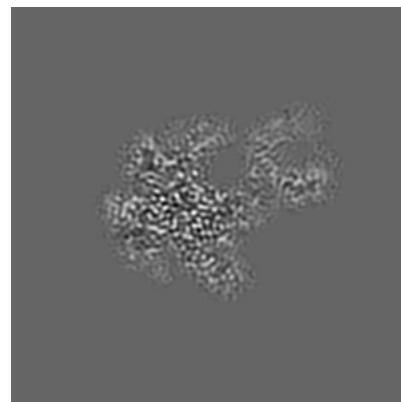
6.3.1 Primary map



X Index: 105

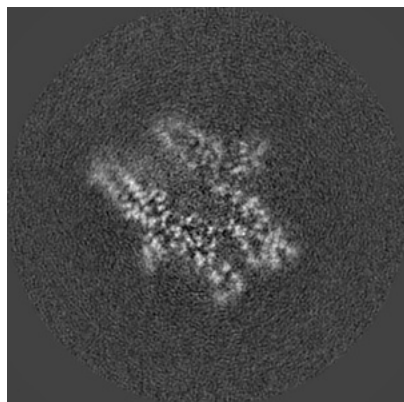


Y Index: 136

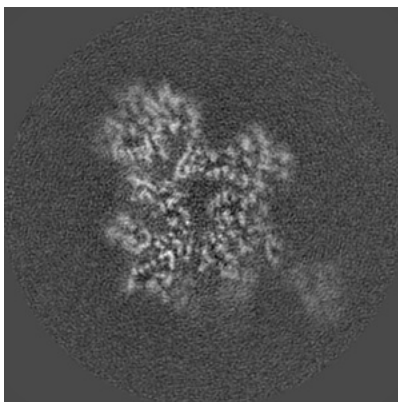


Z Index: 109

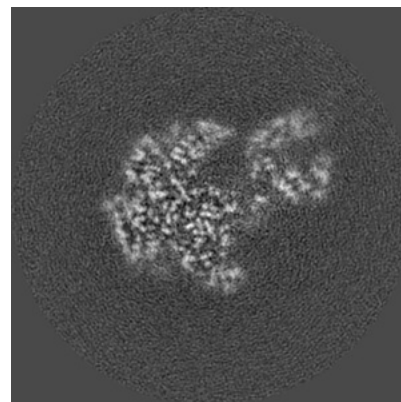
6.3.2 Raw map



X Index: 114



Y Index: 136

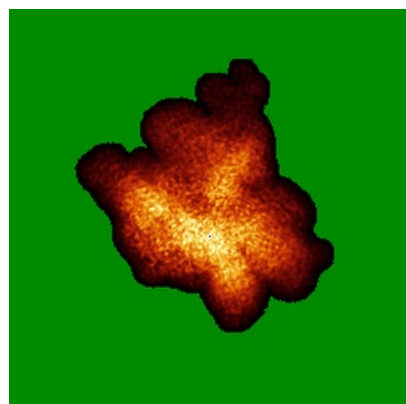


Z Index: 107

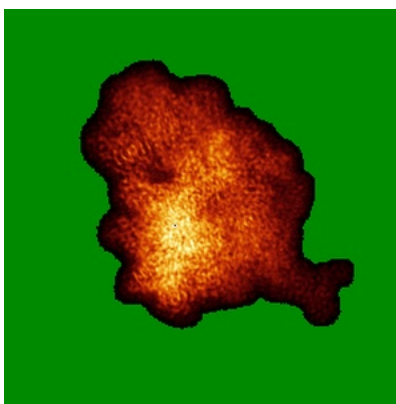
The images above show the largest variance slices of the map in three orthogonal directions.

6.4 Orthogonal standard-deviation projections (False-color) [i](#)

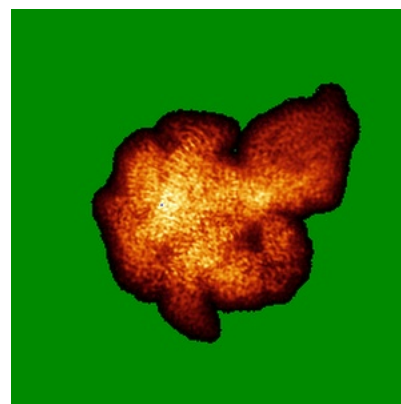
6.4.1 Primary map



X

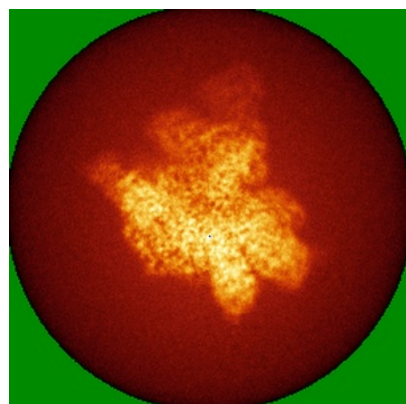


Y

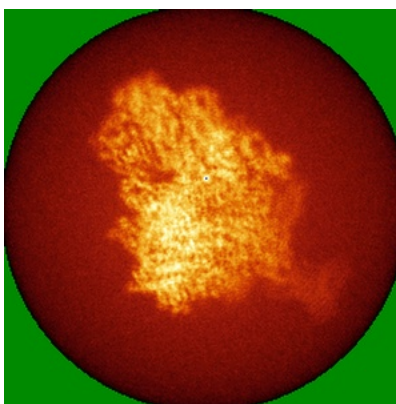


Z

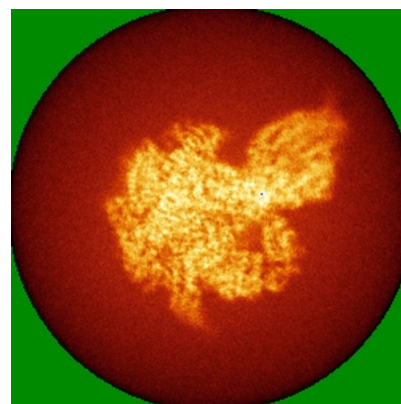
6.4.2 Raw map



X



Y

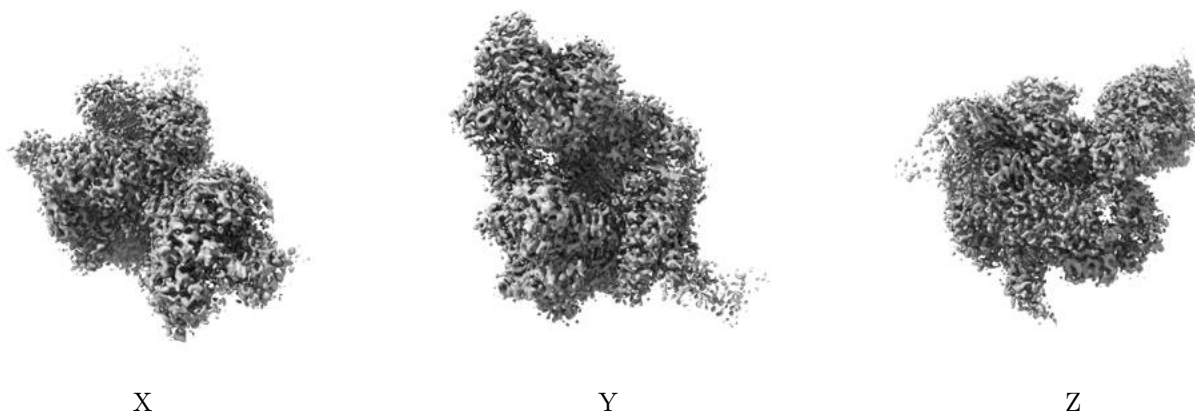


Z

The images above show the map standard deviation projections with false color in three orthogonal directions. Minimum values are shown in green, max in blue, and dark to light orange shades represent small to large values respectively.

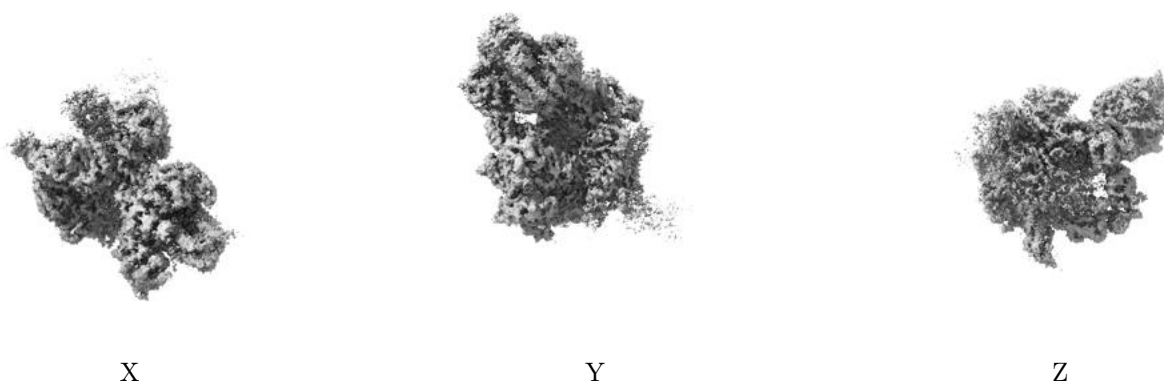
6.5 Orthogonal surface views [i](#)

6.5.1 Primary map



The images above show the 3D surface view of the map at the recommended contour level 0.015. These images, in conjunction with the slice images, may facilitate assessment of whether an appropriate contour level has been provided.

6.5.2 Raw map



These images show the 3D surface of the raw map. The raw map's contour level was selected so that its surface encloses the same volume as the primary map does at its recommended contour level.

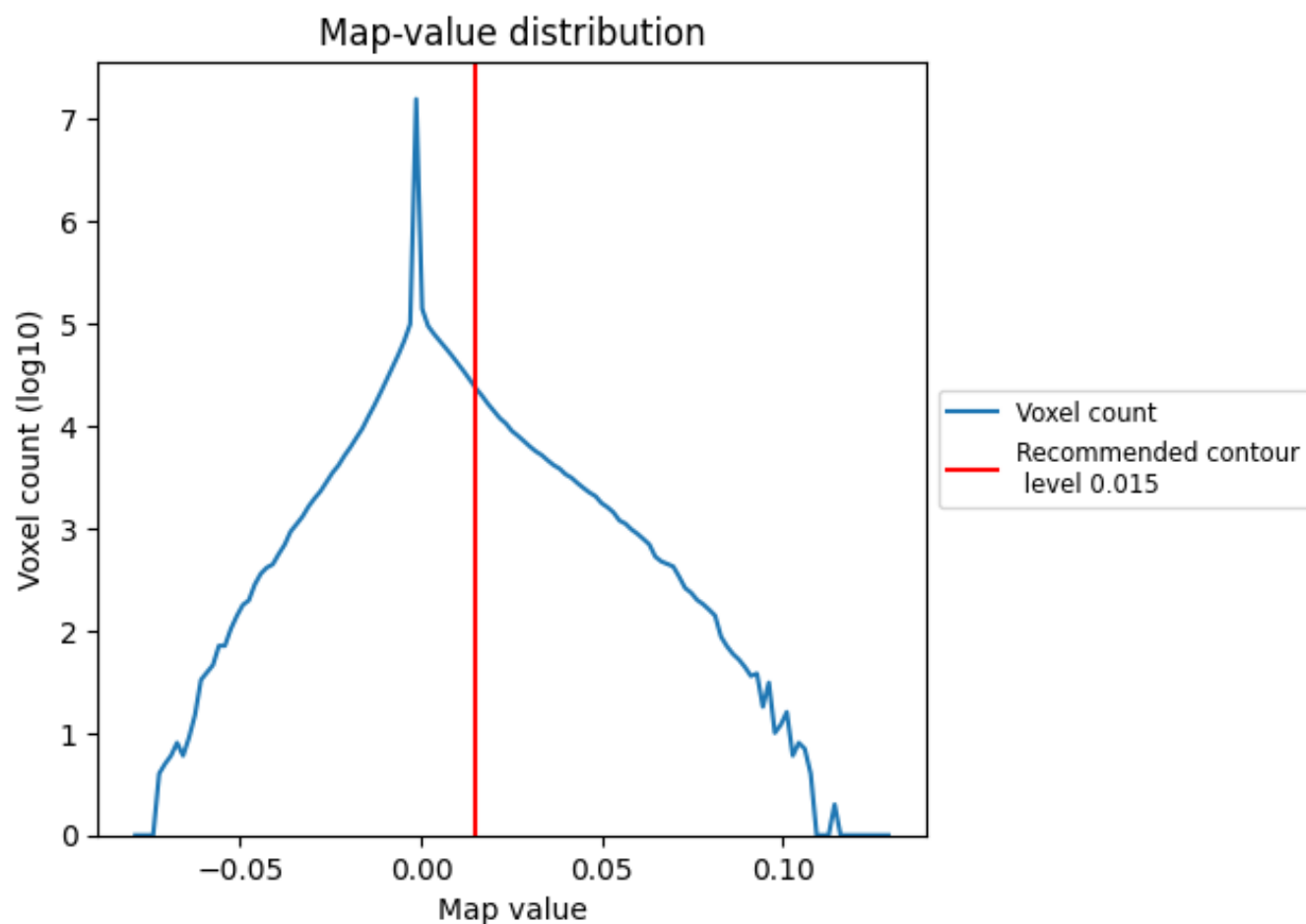
6.6 Mask visualisation [i](#)

This section was not generated. No masks/segmentation were deposited.

7 Map analysis [i](#)

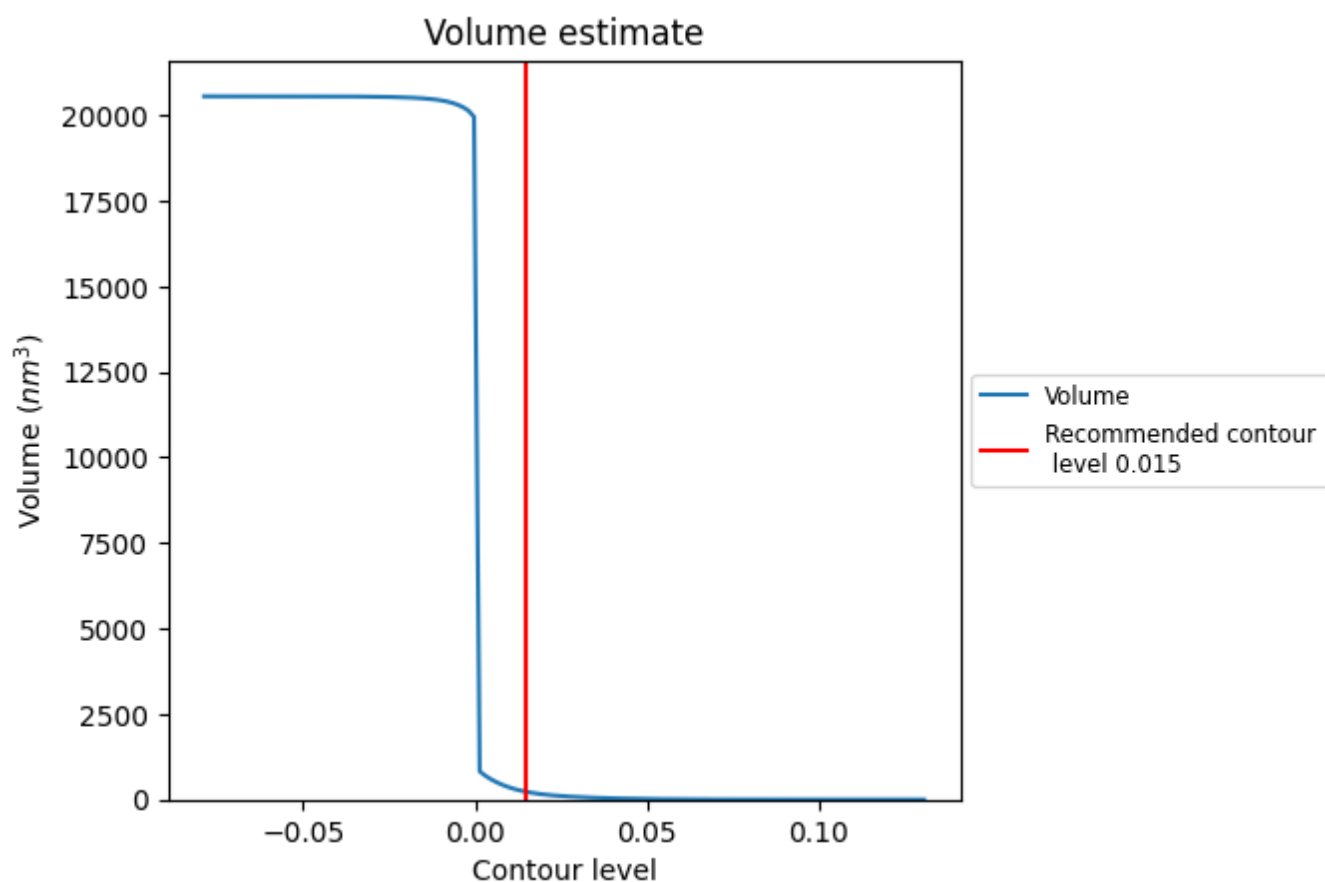
This section contains the results of statistical analysis of the map.

7.1 Map-value distribution [i](#)



The map-value distribution is plotted in 128 intervals along the x-axis. The y-axis is logarithmic. A spike in this graph at zero usually indicates that the volume has been masked.

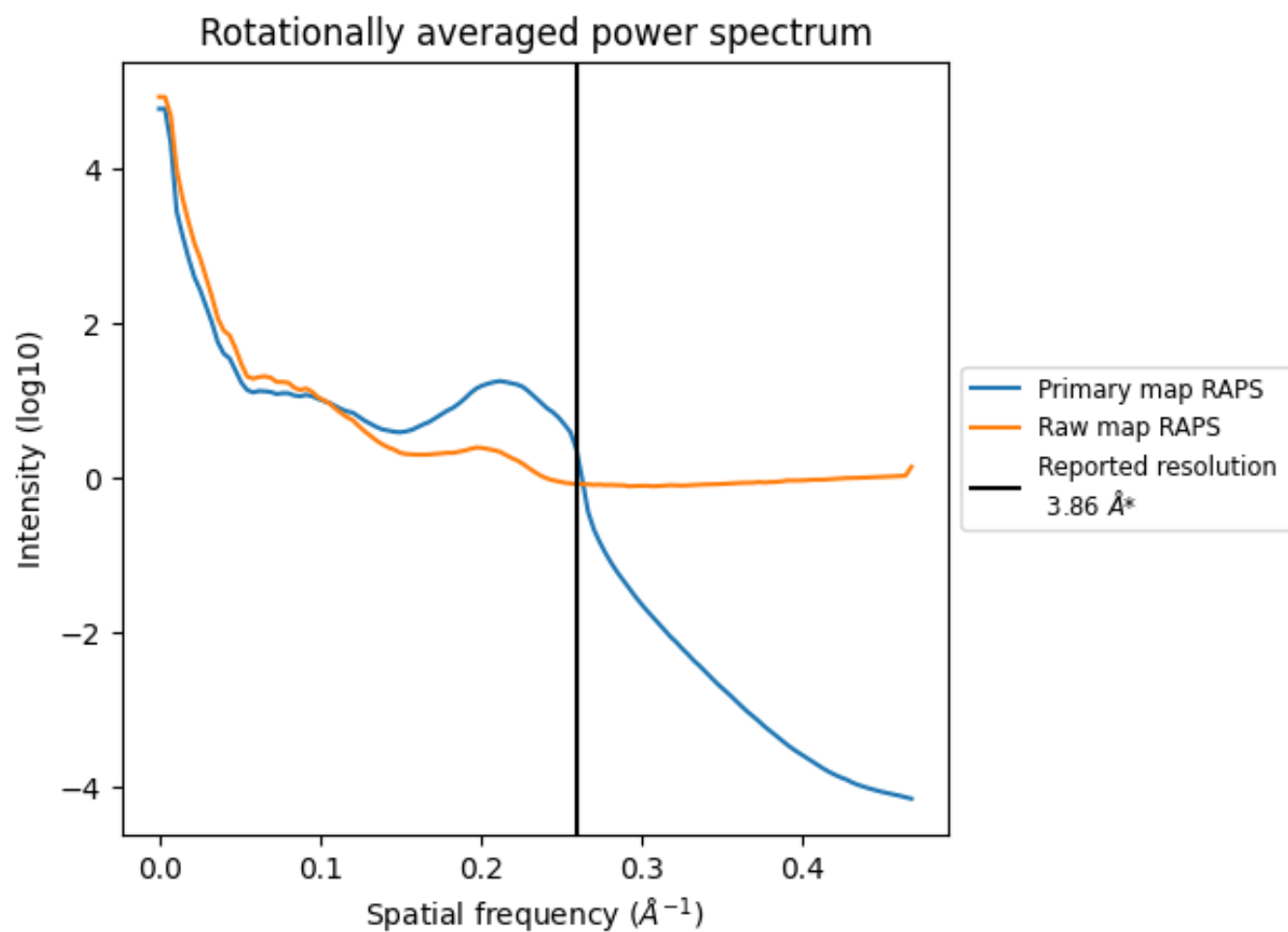
7.2 Volume estimate [i](#)



The volume at the recommended contour level is 225 nm³; this corresponds to an approximate mass of 203 kDa.

The volume estimate graph shows how the enclosed volume varies with the contour level. The recommended contour level is shown as a vertical line and the intersection between the line and the curve gives the volume of the enclosed surface at the given level.

7.3 Rotationally averaged power spectrum ⓘ

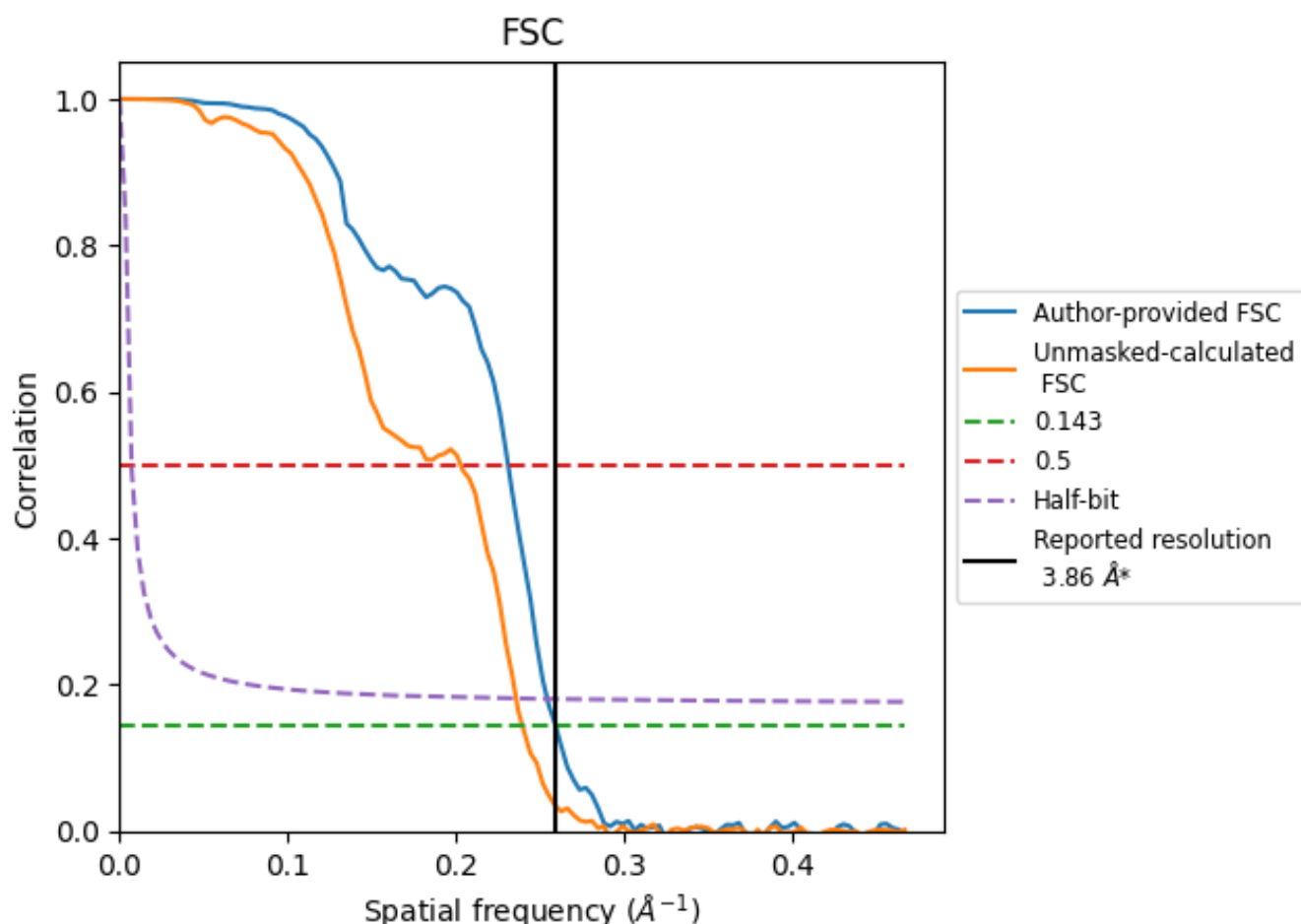


*Reported resolution corresponds to spatial frequency of 0.259\AA^{-1}

8 Fourier-Shell correlation [i](#)

Fourier-Shell Correlation (FSC) is the most commonly used method to estimate the resolution of single-particle and subtomogram-averaged maps. The shape of the curve depends on the imposed symmetry, mask and whether or not the two 3D reconstructions used were processed from a common reference. The reported resolution is shown as a black line. A curve is displayed for the half-bit criterion in addition to lines showing the 0.143 gold standard cut-off and 0.5 cut-off.

8.1 FSC [i](#)



*Reported resolution corresponds to spatial frequency of 0.259 \AA^{-1}

8.2 Resolution estimates [i](#)

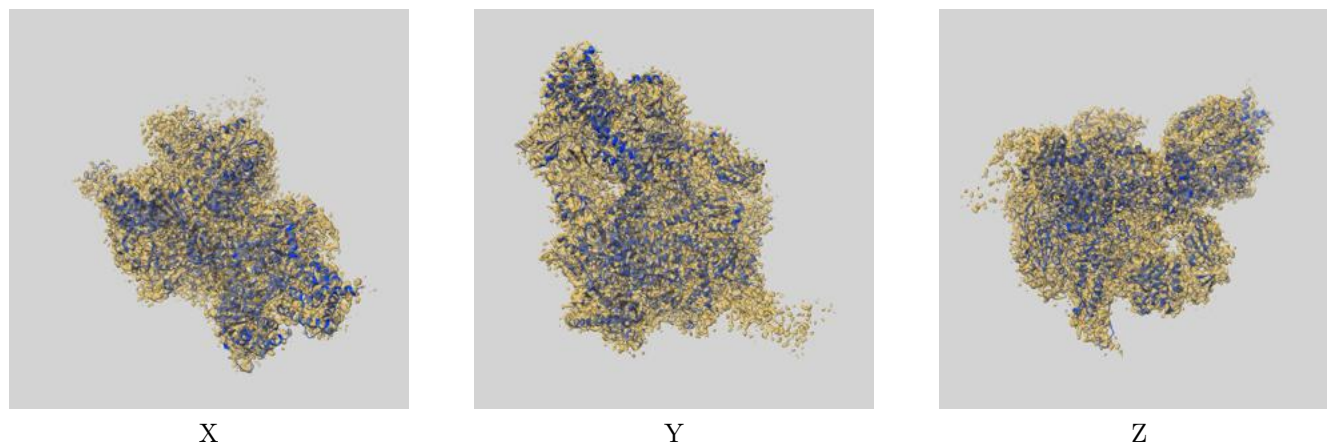
Resolution estimate (Å)	Estimation criterion (FSC cut-off)		
	0.143	0.5	Half-bit
Reported by author	3.86	-	-
Author-provided FSC curve	3.85	4.33	3.93
Unmasked-calculated*	4.17	4.93	4.24

*Resolution estimate based on FSC curve calculated by comparison of deposited half-maps.

9 Map-model fit [i](#)

This section contains information regarding the fit between EMDB map EMD-31306 and PDB model 7EU1. Per-residue inclusion information can be found in section [3](#) on page [7](#).

9.1 Map-model overlay [i](#)



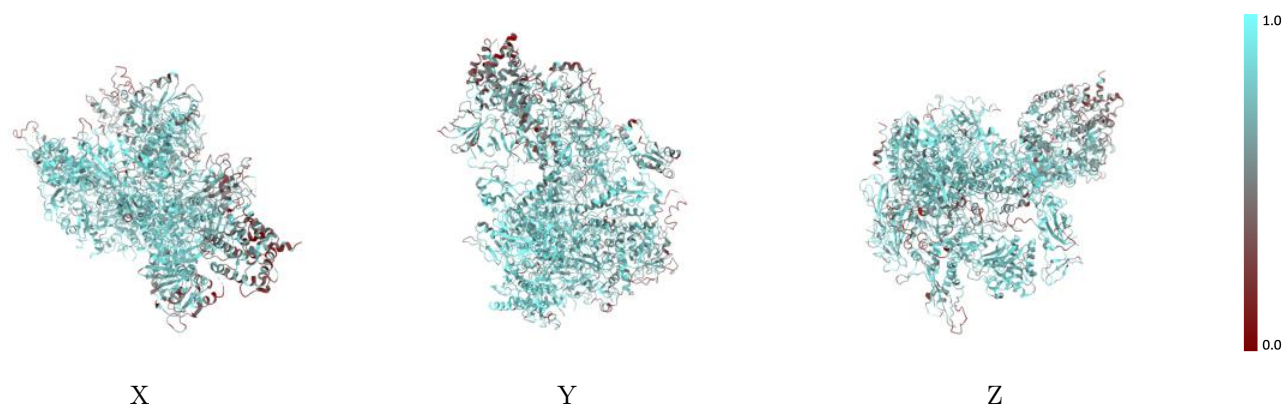
The images above show the 3D surface view of the map at the recommended contour level 0.015 at 50% transparency in yellow overlaid with a ribbon representation of the model coloured in blue. These images allow for the visual assessment of the quality of fit between the atomic model and the map.

9.2 Q-score mapped to coordinate model [i](#)



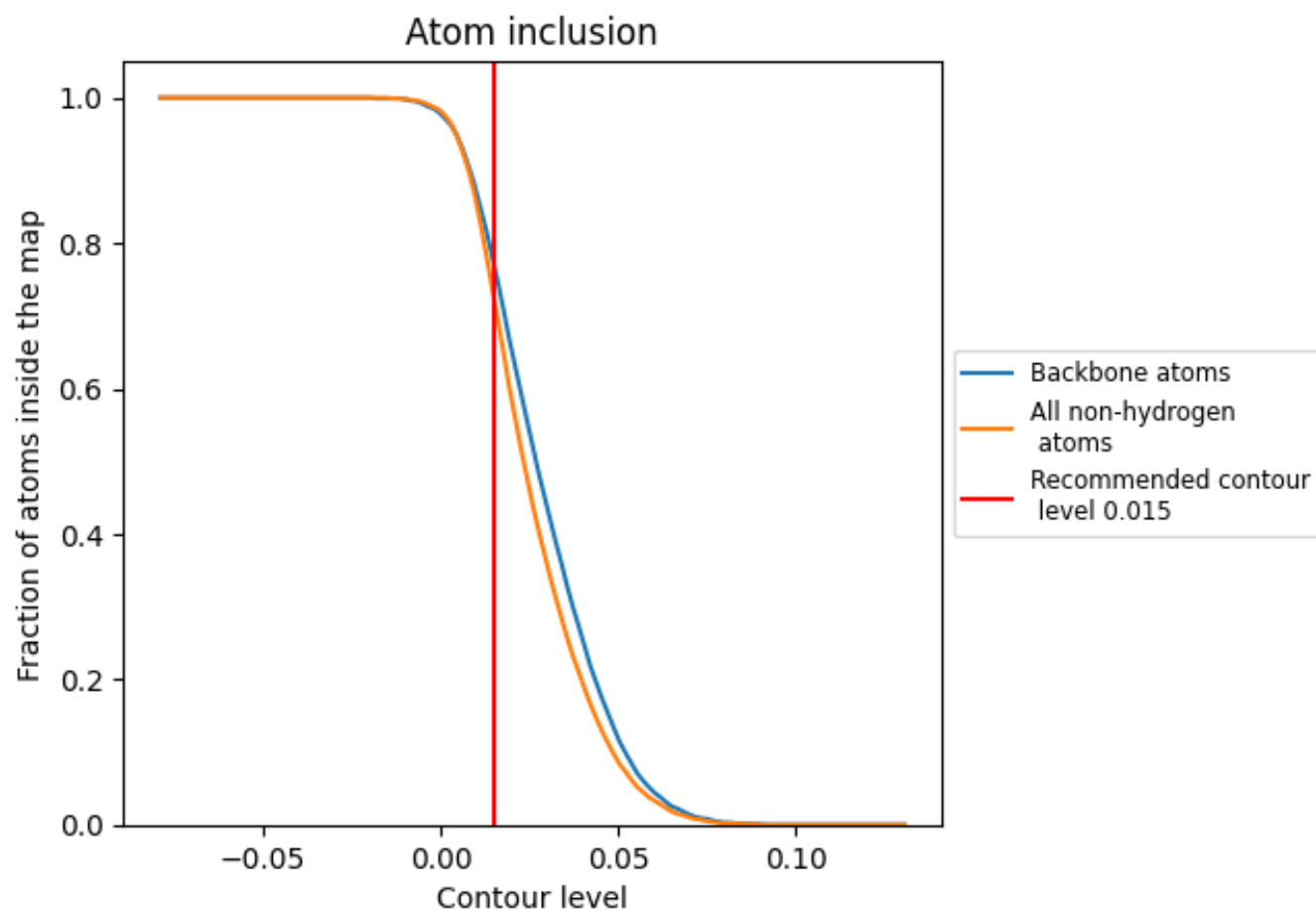
The images above show the model with each residue coloured according its Q-score. This shows their resolvability in the map with higher Q-score values reflecting better resolvability. Please note: Q-score is calculating the resolvability of atoms, and thus high values are only expected at resolutions at which atoms can be resolved. Low Q-score values may therefore be expected for many entries.

9.3 Atom inclusion mapped to coordinate model [i](#)



The images above show the model with each residue coloured according to its atom inclusion. This shows to what extent they are inside the map at the recommended contour level (0.015).























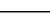
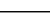
9.4 Atom inclusion [i](#)



At the recommended contour level, 77% of all backbone atoms, 72% of all non-hydrogen atoms, are inside the map.

9.5 Map-model fit summary

The table lists the average atom inclusion at the recommended contour level (0.015) and Q-score for the entire model and for each chain.

Chain	Atom inclusion	Q-score
All	 0.7250	 0.4340
A	 0.7280	 0.4450
B	 0.7740	 0.4590
C	 0.7940	 0.4680
E	 0.6920	 0.4070
F	 0.6830	 0.4330
H	 0.7740	 0.4560
I	 0.7360	 0.4320
J	 0.8490	 0.4890
K	 0.8110	 0.4700
L	 0.7750	 0.4690
M	 0.6410	 0.3850

