



Full wwPDB EM Validation Report ⓘ

Mar 30, 2025 – 03:34 am BST

PDB ID : 9EUV / pdb_00009euv
EMDB ID : EMD-19987
Title : Lymphostatin, conformation 1 (composite structure)
Authors : Griessmann, M.; Rasmussen, T.; Bottcher, B.
Deposited on : 2024-03-28
Resolution : 3.00 Å(reported)
Based on initial model : .

This is a Full wwPDB EM Validation Report for a publicly released PDB entry.

We welcome your comments at validation@mail.wwpdb.org

A user guide is available at

<https://www.wwpdb.org/validation/2017/EMValidationReportHelp>
with specific help available everywhere you see the ⓘ symbol.

The types of validation reports are described at

<http://www.wwpdb.org/validation/2017/FAQs#types>.

The following versions of software and data (see [references ⓘ](#)) were used in the production of this report:

EMDB validation analysis : 0.0.1.dev117
MolProbity : 4.02b-467
Percentile statistics : 20231227.v01 (using entries in the PDB archive December 27th 2023)
MapQ : 1.9.13
Ideal geometry (proteins) : Engh & Huber (2001)
Ideal geometry (DNA, RNA) : Parkinson et al. (1996)
Validation Pipeline (wwPDB-VP) : 2.42

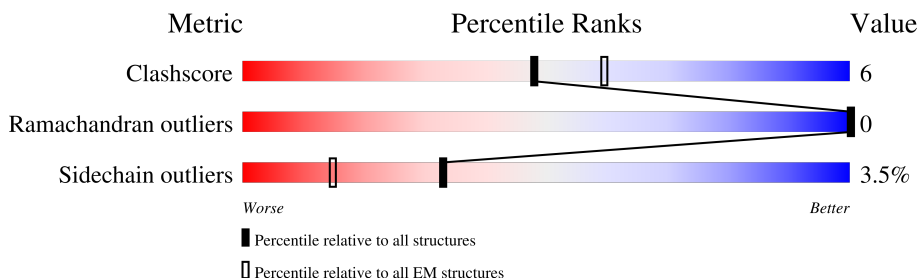
1 Overall quality at a glance

The following experimental techniques were used to determine the structure:

ELECTRON MICROSCOPY

The reported resolution of this entry is 3.00 Å.

Percentile scores (ranging between 0-100) for global validation metrics of the entry are shown in the following graphic. The table shows the number of entries on which the scores are based.



Metric	Whole archive (#Entries)	EM structures (#Entries)
Clashscore	210492	15764
Ramachandran outliers	207382	16835
Sidechain outliers	206894	16415

The table below summarises the geometric issues observed across the polymeric chains and their fit to the map. The red, orange, yellow and green segments of the bar indicate the fraction of residues that contain outliers for ≥ 3 , 2, 1 and 0 types of geometric quality criteria respectively. A grey segment represents the fraction of residues that are not modelled. The numeric value for each fraction is indicated below the corresponding segment, with a dot representing fractions $\leq 5\%$. The upper red bar (where present) indicates the fraction of residues that have poor fit to the EM map (all-atom inclusion $< 40\%$). The numeric value is given above the bar.

Mol	Chain	Length	Quality of chain
1	A	3229	

2 Entry composition

There is only 1 type of molecule in this entry. The entry contains 22291 atoms, of which 0 are hydrogens and 0 are deuteriums.

In the tables below, the AltConf column contains the number of residues with at least one atom in alternate conformation and the Trace column contains the number of residues modelled with at most 2 atoms.

- Molecule 1 is a protein called Efa1/LifA protein.

Mol	Chain	Residues	Atoms					AltConf	Trace
			Total	C	N	O	S		
1	A	2797	22291	14094	3863	4258	76	0	0

There are 6 discrepancies between the modelled and reference sequences:

Chain	Residue	Modelled	Actual	Comment	Reference
A	3224	HIS	-	expression tag	UNP B7UI23
A	3225	HIS	-	expression tag	UNP B7UI23
A	3226	HIS	-	expression tag	UNP B7UI23
A	3227	HIS	-	expression tag	UNP B7UI23
A	3228	HIS	-	expression tag	UNP B7UI23
A	3229	HIS	-	expression tag	UNP B7UI23



4 Experimental information

Property	Value	Source
EM reconstruction method	SINGLE PARTICLE	Depositor
Imposed symmetry	POINT, Not provided	
Number of particles used	120944	Depositor
Resolution determination method	FSC 0.143 CUT-OFF	Depositor
CTF correction method	PHASE FLIPPING AND AMPLITUDE CORRECTION	Depositor
Microscope	FEI TITAN KRIOS	Depositor
Voltage (kV)	300	Depositor
Electron dose ($e^-/\text{\AA}^2$)	70	Depositor
Minimum defocus (nm)	500	Depositor
Maximum defocus (nm)	1400	Depositor
Magnification	130000	Depositor
Image detector	FEI FALCON IV (4k x 4k)	Depositor
Maximum map value	52.407	Depositor
Minimum map value	-26.683	Depositor
Average map value	-0.004	Depositor
Map value standard deviation	1.036	Depositor
Recommended contour level	5	Depositor
Map size (Å)	378.4, 378.4, 378.4	wwPDB
Map dimensions	400, 400, 400	wwPDB
Map angles (°)	90.0, 90.0, 90.0	wwPDB
Pixel spacing (Å)	0.946, 0.946, 0.946	Depositor

5 Model quality [i](#)

5.1 Standard geometry [i](#)

The Z score for a bond length (or angle) is the number of standard deviations the observed value is removed from the expected value. A bond length (or angle) with $|Z| > 5$ is considered an outlier worth inspection. RMSZ is the root-mean-square of all Z scores of the bond lengths (or angles).

Mol	Chain	Bond lengths		Bond angles	
		RMSZ	$\# Z > 5$	RMSZ	$\# Z > 5$
1	A	0.24	0/22727	0.47	0/30794

There are no bond length outliers.

There are no bond angle outliers.

There are no chirality outliers.

There are no planarity outliers.

5.2 Too-close contacts [i](#)

In the following table, the Non-H and H(model) columns list the number of non-hydrogen atoms and hydrogen atoms in the chain respectively. The H(added) column lists the number of hydrogen atoms added and optimized by MolProbity. The Clashes column lists the number of clashes within the asymmetric unit, whereas Symm-Clashes lists symmetry-related clashes.

Mol	Chain	Non-H	H(model)	H(added)	Clashes	Symm-Clashes
1	A	22291	0	22301	255	0
All	All	22291	0	22301	255	0

The all-atom clashscore is defined as the number of clashes found per 1000 atoms (including hydrogen atoms). The all-atom clashscore for this structure is 6.

All (255) close contacts within the same asymmetric unit are listed below, sorted by their clash magnitude.

Atom-1	Atom-2	Interatomic distance (Å)	Clash overlap (Å)
1:A:3184:GLU:HB3	1:A:3203:LYS:HB2	1.72	0.71
1:A:2651:LEU:HB2	1:A:2720:VAL:HB	1.73	0.70
1:A:2359:PRO:HD3	1:A:2398:ASN:HD22	1.56	0.68
1:A:2483:GLU:HG2	1:A:2484:THR:HG23	1.75	0.68
1:A:2380:LEU:HD22	1:A:2425:MET:HG3	1.76	0.68

Continued on next page...

Continued from previous page...

Atom-1	Atom-2	Interatomic distance (Å)	Clash overlap (Å)
1:A:1906:THR:O	1:A:1910:MET:HG3	1.94	0.68
1:A:2516:THR:HB	1:A:2539:THR:HG23	1.76	0.67
1:A:3068:ARG:NH2	1:A:3079:ASP:OD1	2.28	0.67
1:A:1315:ASN:OD1	1:A:1318:ASN:ND2	2.28	0.66
1:A:2688:LYS:HE3	1:A:2692:GLU:HG3	1.77	0.66
1:A:277:LEU:HD12	1:A:294:ILE:HG23	1.78	0.66
1:A:297:ALA:O	1:A:301:ILE:HG13	1.97	0.65
1:A:2918:GLY:O	1:A:2935:ARG:NH1	2.29	0.64
1:A:337:LEU:O	1:A:505:ARG:NH2	2.30	0.64
1:A:862:GLN:HB2	1:A:914:ILE:HG21	1.79	0.64
1:A:1738:ASP:OD1	1:A:1741:ARG:NH2	2.30	0.63
1:A:2162:GLN:NE2	1:A:2198:ASN:OD1	2.31	0.63
1:A:3106:ILE:HB	1:A:3155:TYR:HB2	1.82	0.62
1:A:1850:LEU:HD22	1:A:1871:VAL:HG11	1.82	0.62
1:A:2957:LEU:HB3	1:A:2976:LEU:HB2	1.81	0.61
1:A:3107:ARG:NH1	1:A:3145:SER:O	2.34	0.61
1:A:1802:ARG:HE	1:A:1808:LEU:HG	1.66	0.60
1:A:446:ASN:ND2	1:A:848:GLU:OE2	2.34	0.59
1:A:446:ASN:O	1:A:450:VAL:HG23	2.03	0.59
1:A:342:GLU:OE2	1:A:639:LYS:NZ	2.28	0.59
1:A:443:ASN:ND2	1:A:848:GLU:OE1	2.33	0.59
1:A:469:ILE:HD12	1:A:836:LYS:HG2	1.85	0.58
1:A:2572:VAL:HG23	1:A:2587:ILE:HB	1.85	0.58
1:A:1553:HIS:NE2	1:A:1645:GLU:OE1	2.36	0.58
1:A:1772:GLN:OE1	1:A:2002:SER:OG	2.21	0.58
1:A:3031:SER:HB2	1:A:3054:VAL:HG13	1.84	0.58
1:A:614:SER:OG	1:A:617:ASP:OD1	2.22	0.58
1:A:1149:ASN:HB3	1:A:1152:LYS:HG2	1.85	0.58
1:A:1757:ASP:OD1	1:A:2877:ARG:NH2	2.37	0.58
1:A:2175:TRP:O	1:A:2176:ILE:HD12	2.04	0.58
1:A:2930:ASP:OD1	1:A:2930:ASP:N	2.36	0.57
1:A:389:LEU:O	1:A:393:ILE:HG23	2.05	0.57
1:A:2522:PRO:HB3	1:A:2546:ASP:HB2	1.86	0.57
1:A:3069:VAL:HG21	1:A:3199:TYR:HE1	1.70	0.57
1:A:2652:PRO:O	1:A:2660:GLN:NE2	2.38	0.57
1:A:2931:ASP:O	1:A:3007:ARG:NH2	2.37	0.57
1:A:1754:ARG:HG2	1:A:1978:ILE:HD13	1.87	0.56
1:A:2907:ALA:HB3	1:A:2970:GLN:HG2	1.86	0.56
1:A:2931:ASP:HB2	1:A:3016:ARG:HH22	1.69	0.56
1:A:3124:LEU:O	1:A:3183:PHE:N	2.35	0.56
1:A:390:TYR:HH	1:A:730:TYR:HH	1.54	0.56

Continued on next page...

Continued from previous page...

Atom-1	Atom-2	Interatomic distance (Å)	Clash overlap (Å)
1:A:689:GLN:OE1	1:A:692:ARG:NH1	2.38	0.56
1:A:704:GLU:HB3	1:A:1551:LEU:HD21	1.87	0.56
1:A:1864:ASP:HB3	1:A:1867:LEU:HB3	1.88	0.56
1:A:2318:ALA:HB1	1:A:2357:LYS:HE2	1.88	0.56
1:A:2116:ARG:NH1	1:A:2122:ALA:O	2.39	0.56
1:A:2566:LYS:HG3	1:A:2622:ASN:HB3	1.88	0.56
1:A:1800:ILE:HD12	1:A:1833:LEU:HD11	1.88	0.55
1:A:3184:GLU:N	1:A:3203:LYS:O	2.35	0.55
1:A:331:ASP:OD1	1:A:331:ASP:N	2.37	0.55
1:A:2676:GLY:HA2	1:A:2724:SER:HA	1.87	0.55
1:A:415:TYR:HB2	1:A:731:LEU:HB3	1.88	0.55
1:A:2235:TYR:O	1:A:2255:TYR:N	2.32	0.55
1:A:2577:ALA:HA	1:A:2582:SER:HA	1.88	0.55
1:A:3019:ASP:HB3	1:A:3029:ILE:HB	1.88	0.55
1:A:264:ARG:HA	1:A:267:LEU:HD12	1.89	0.55
1:A:306:TYR:OH	1:A:774:LEU:O	2.21	0.55
1:A:3113:TRP:O	1:A:3193:TYR:OH	2.24	0.55
1:A:1875:VAL:HG21	1:A:1933:VAL:HG21	1.88	0.55
1:A:2265:LYS:H	1:A:2265:LYS:HD2	1.72	0.55
1:A:1807:HIS:HB3	1:A:1829:ASP:HA	1.90	0.54
1:A:247:GLU:HA	1:A:250:ARG:CG	2.37	0.54
1:A:777:GLU:OE2	1:A:787:LYS:NZ	2.41	0.54
1:A:1447:ARG:NH2	1:A:1784:GLN:OE1	2.27	0.54
1:A:2945:ALA:HB1	1:A:3048:SER:HB3	1.89	0.54
1:A:2226:THR:HG23	1:A:2293:LEU:HD21	1.90	0.54
1:A:2041:GLU:O	1:A:2044:THR:OG1	2.25	0.53
1:A:3106:ILE:HD11	1:A:3134:VAL:HG22	1.90	0.53
1:A:1559:GLN:NE2	1:A:1615:GLU:OE1	2.40	0.53
1:A:334:LYS:HG2	1:A:501:PHE:HE1	1.73	0.53
1:A:340:TYR:O	1:A:505:ARG:NH2	2.41	0.53
1:A:846:LEU:HD23	1:A:849:LEU:HD13	1.90	0.53
1:A:871:LEU:HD13	1:A:906:ILE:HG23	1.91	0.53
1:A:247:GLU:CD	1:A:247:GLU:H	2.13	0.53
1:A:2631:HIS:ND1	1:A:2690:GLU:OE1	2.42	0.53
1:A:2060:ILE:HD12	1:A:2078:PHE:HB2	1.90	0.52
1:A:3098:LEU:O	1:A:3102:THR:OG1	2.23	0.52
1:A:2783:LEU:HD22	1:A:2787:GLN:HE21	1.75	0.52
1:A:288:GLU:HG2	1:A:292:LYS:HE3	1.91	0.52
1:A:1634:ASP:OD2	1:A:1637:LYS:NZ	2.42	0.52
1:A:2107:ARG:NH2	1:A:2109:ASP:OD2	2.42	0.52
1:A:2393:ILE:HG23	1:A:2399:ASN:HD22	1.74	0.52

Continued on next page...

Continued from previous page...

Atom-1	Atom-2	Interatomic distance (Å)	Clash overlap (Å)
1:A:1649:VAL:O	1:A:1653:LEU:HG	2.10	0.52
1:A:2603:GLN:HB2	1:A:2606:ASP:HB3	1.92	0.52
1:A:892:ASP:OD2	1:A:895:ASN:ND2	2.38	0.52
1:A:2474:THR:HG22	1:A:2476:GLU:H	1.75	0.52
1:A:360:THR:HG23	1:A:531:LEU:HD12	1.92	0.51
1:A:581:ARG:NH2	1:A:617:ASP:OD2	2.43	0.51
1:A:2515:THR:HG22	1:A:2537:LEU:HB3	1.92	0.51
1:A:2654:VAL:HG11	1:A:2657:SER:HB3	1.93	0.51
1:A:2316:THR:HG22	1:A:2317:ALA:H	1.75	0.51
1:A:2110:LEU:HB3	1:A:2114:GLN:HB2	1.93	0.51
1:A:2874:GLU:OE2	1:A:2877:ARG:NH1	2.44	0.51
1:A:1592:TYR:CE2	1:A:1607:PRO:HG3	2.45	0.50
1:A:2932:LEU:HA	1:A:3007:ARG:HH21	1.74	0.50
1:A:2406:ASP:OD1	1:A:2406:ASP:N	2.43	0.50
1:A:246:ILE:O	1:A:250:ARG:HG2	2.11	0.50
1:A:1127:ASN:HA	1:A:1130:ASN:ND2	2.26	0.50
1:A:717:PRO:HB3	1:A:754:ILE:HG22	1.94	0.50
1:A:2292:MET:HB3	1:A:2299:GLU:HG2	1.93	0.50
1:A:620:ILE:HG13	1:A:623:LYS:HE2	1.95	0.49
1:A:1757:ASP:HB3	1:A:1760:MET:HG2	1.92	0.49
1:A:2270:SER:HA	1:A:2314:VAL:HB	1.94	0.49
1:A:1472:LEU:HD21	1:A:1506:VAL:HG12	1.95	0.49
1:A:3082:LEU:HD23	1:A:3137:THR:HG23	1.94	0.49
1:A:516:SER:O	1:A:522:ASN:ND2	2.44	0.49
1:A:1364:THR:OG1	1:A:1367:ASP:OD1	2.31	0.49
1:A:1812:ASN:N	1:A:1812:ASN:OD1	2.46	0.49
1:A:2479:PHE:HB2	1:A:2486:VAL:HB	1.94	0.48
1:A:2316:THR:HG22	1:A:2317:ALA:N	2.28	0.48
1:A:1301:ASP:OD2	1:A:1326:SER:OG	2.31	0.48
1:A:1594:LEU:HD13	1:A:1614:ILE:HD11	1.95	0.48
1:A:677:SER:HB3	1:A:680:ILE:HG13	1.95	0.48
1:A:2949:TYR:HB2	1:A:3044:LEU:HB2	1.95	0.48
1:A:649:MET:HG3	1:A:673:SER:HB2	1.96	0.48
1:A:2412:HIS:ND1	1:A:2412:HIS:C	2.68	0.48
1:A:287:THR:HG22	1:A:290:THR:H	1.78	0.47
1:A:3057:ARG:O	1:A:3061:MET:HB3	2.13	0.47
1:A:1900:LYS:HB3	1:A:1986:TYR:CG	2.50	0.47
1:A:2789:MET:HB3	1:A:2800:ARG:HB3	1.97	0.47
1:A:1977:VAL:HG23	1:A:1978:ILE:HG13	1.97	0.47
1:A:2175:TRP:HB2	1:A:2177:VAL:HG22	1.95	0.47
1:A:2867:ASN:O	1:A:2871:ILE:HG13	2.15	0.47

Continued on next page...

Continued from previous page...

Atom-1	Atom-2	Interatomic distance (Å)	Clash overlap (Å)
1:A:2566:LYS:HB3	1:A:2573:ILE:HB	1.96	0.47
1:A:390:TYR:OH	1:A:730:TYR:OH	2.25	0.46
1:A:781:GLU:O	1:A:782:ARG:HG2	2.16	0.46
1:A:705:ILE:HD12	1:A:706:TYR:N	2.30	0.46
1:A:2175:TRP:O	1:A:2177:VAL:HG13	2.16	0.46
1:A:255:TYR:OH	1:A:304:GLU:OE2	2.33	0.46
1:A:774:LEU:HD22	1:A:774:LEU:H	1.81	0.46
1:A:1674:ALA:HB2	1:A:1690:LYS:HD2	1.96	0.46
1:A:2961:TYR:HB2	1:A:2972:MET:HG3	1.97	0.46
1:A:1764:THR:HG21	1:A:1772:GLN:HG3	1.97	0.46
1:A:409:ASN:O	1:A:413:GLU:HG2	2.16	0.46
1:A:587:LYS:HE2	1:A:587:LYS:HB2	1.76	0.45
1:A:1150:ILE:O	1:A:1154:ILE:HG12	2.16	0.45
1:A:2272:ARG:NH1	1:A:2316:THR:O	2.48	0.45
1:A:910:MET:HE1	1:A:916:LYS:N	2.31	0.45
1:A:1347:ARG:NH2	1:A:1350:GLN:OE1	2.49	0.45
1:A:1615:GLU:O	1:A:1619:GLN:HG2	2.16	0.45
1:A:271:GLN:HG2	1:A:774:LEU:HD23	1.98	0.45
1:A:801:TYR:HB2	1:A:803:TRP:CH2	2.51	0.45
1:A:292:LYS:O	1:A:295:GLU:HG3	2.17	0.45
1:A:867:THR:HG21	1:A:912:ASP:HB2	1.98	0.45
1:A:1156:LYS:HE2	1:A:1156:LYS:HA	1.98	0.45
1:A:1626:GLU:HA	1:A:1631:LEU:HB2	1.98	0.45
1:A:1957:ARG:HD3	1:A:1961:LEU:HD13	1.97	0.45
1:A:2088:SER:HB3	1:A:2089:PRO:HD3	1.99	0.45
1:A:1796:HIS:C	1:A:1796:HIS:HD1	2.20	0.45
1:A:404:GLN:O	1:A:408:LEU:HD23	2.17	0.45
1:A:3065:LEU:HD23	1:A:3065:LEU:HA	1.79	0.45
1:A:271:GLN:NE2	1:A:771:ARG:O	2.50	0.45
1:A:1898:ASP:OD1	1:A:1901:GLN:NE2	2.49	0.45
1:A:3066:GLN:HE22	1:A:3191:ARG:HH22	1.65	0.45
1:A:3032:PHE:HB3	1:A:3060:TYR:CD2	2.52	0.44
1:A:237:LEU:HD23	1:A:238:LYS:HD2	1.99	0.44
1:A:2106:HIS:NE2	1:A:2108:PRO:HG3	2.32	0.44
1:A:1385:ARG:O	1:A:1385:ARG:NH1	2.43	0.44
1:A:1936:GLY:O	1:A:1940:VAL:HG23	2.18	0.44
1:A:247:GLU:HA	1:A:250:ARG:HG3	1.99	0.44
1:A:375:ILE:HD11	1:A:428:MET:HB3	1.99	0.44
1:A:2412:HIS:C	1:A:2412:HIS:HD1	2.21	0.44
1:A:2689:ALA:HB3	1:A:2692:GLU:CD	2.38	0.44
1:A:1182:HIS:NE2	1:A:1292:SER:OG	2.50	0.44

Continued on next page...

Continued from previous page...

Atom-1	Atom-2	Interatomic distance (Å)	Clash overlap (Å)
1:A:1308:ARG:HG3	1:A:1322:LEU:HD11	1.99	0.44
1:A:2859:ILE:HD12	1:A:2866:LEU:HD23	2.00	0.44
1:A:3214:LYS:O	1:A:3215:THR:OG1	2.36	0.44
1:A:1182:HIS:CE1	1:A:1282:SER:HB2	2.52	0.44
1:A:1900:LYS:HB3	1:A:1986:TYR:CD2	2.53	0.44
1:A:2686:ALA:HB1	1:A:2710:LEU:HD11	1.99	0.44
1:A:836:LYS:HA	1:A:836:LYS:HD3	1.87	0.43
1:A:1204:ILE:HG22	1:A:1208:LYS:HE3	2.00	0.43
1:A:2098:PHE:HB2	1:A:2106:HIS:CE1	2.53	0.43
1:A:2834:GLU:O	1:A:2838:ARG:HG3	2.18	0.43
1:A:3103:PRO:HB3	1:A:3156:ARG:HH11	1.83	0.43
1:A:1178:ARG:NH1	1:A:1192:GLU:OE2	2.40	0.43
1:A:3169:ALA:O	1:A:3172:GLU:HG2	2.18	0.43
1:A:241:TYR:CE2	1:A:280:ILE:HA	2.53	0.43
1:A:2033:ALA:HA	1:A:2036:VAL:HB	2.00	0.43
1:A:1559:GLN:O	1:A:1563:THR:OG1	2.31	0.43
1:A:342:GLU:OE1	1:A:342:GLU:N	2.49	0.43
1:A:495:LEU:HD12	1:A:495:LEU:HA	1.84	0.43
1:A:950:LYS:HA	1:A:950:LYS:HD3	1.63	0.43
1:A:1844:VAL:HG13	1:A:1918:PHE:HE2	1.83	0.43
1:A:1915:GLY:O	1:A:1919:LEU:HB2	2.19	0.43
1:A:1973:LEU:O	1:A:1977:VAL:HG22	2.18	0.43
1:A:479:TYR:O	1:A:482:THR:HG22	2.19	0.43
1:A:966:ASN:HB2	1:A:1255:PRO:HB3	2.01	0.43
1:A:1545:TYR:CE2	1:A:1653:LEU:HB3	2.54	0.43
1:A:1662:SER:O	1:A:1662:SER:OG	2.36	0.43
1:A:3113:TRP:HD1	1:A:3193:TYR:HE2	1.66	0.43
1:A:1262:ASN:HD22	1:A:1264:LEU:HB2	1.84	0.43
1:A:1811:GLU:OE2	1:A:1828:ARG:HB2	2.19	0.43
1:A:2665:GLU:HG3	1:A:2709:ARG:HG3	2.00	0.43
1:A:1230:LYS:HA	1:A:1230:LYS:HD2	1.75	0.42
1:A:2578:THR:N	1:A:2581:TYR:O	2.50	0.42
1:A:2682:LYS:HB2	1:A:2682:LYS:HE3	1.73	0.42
1:A:3182:CYS:HB3	1:A:3205:CYS:HB2	1.46	0.42
1:A:560:MET:HE2	1:A:560:MET:HB2	1.69	0.42
1:A:664:ILE:HD11	1:A:801:TYR:OH	2.18	0.42
1:A:886:ILE:HD13	1:A:886:ILE:HA	1.86	0.42
1:A:2345:GLY:HA2	1:A:2368:SER:HA	2.01	0.42
1:A:2505:GLU:HG3	1:A:2525:ARG:HB3	2.00	0.42
1:A:3103:PRO:HB3	1:A:3156:ARG:NH1	2.35	0.42
1:A:2367:ASN:OD1	1:A:2367:ASN:N	2.48	0.42

Continued on next page...

Continued from previous page...

Atom-1	Atom-2	Interatomic distance (Å)	Clash overlap (Å)
1:A:2337:GLY:HA2	1:A:2357:LYS:HB2	2.02	0.42
1:A:494:ILE:HG12	1:A:508:ILE:HG13	2.02	0.42
1:A:1319:LEU:HD23	1:A:1337:ILE:HG23	2.02	0.42
1:A:2057:SER:HA	1:A:2060:ILE:HD11	2.02	0.42
1:A:1248:PRO:HD2	1:A:1251:GLU:HG3	2.00	0.42
1:A:1331:PHE:CG	1:A:1360:THR:HG22	2.54	0.42
1:A:2049:TYR:HD1	1:A:2194:LEU:HD22	1.84	0.42
1:A:2362:LEU:HD12	1:A:2402:VAL:HG22	2.01	0.42
1:A:1452:ARG:NH1	1:A:1452:ARG:HB3	2.34	0.42
1:A:1551:LEU:HD22	1:A:1653:LEU:HD21	2.01	0.42
1:A:1808:LEU:HD22	1:A:1827:ILE:HG21	2.01	0.42
1:A:2268:THR:HA	1:A:2312:THR:HB	2.02	0.42
1:A:3177:LEU:HD21	1:A:3181:THR:HB	2.02	0.42
1:A:1325:ASN:OD1	1:A:1325:ASN:N	2.53	0.41
1:A:1938:ARG:HH21	1:A:1957:ARG:HH21	1.68	0.41
1:A:2062:VAL:HB	1:A:2071:ASP:HB3	2.01	0.41
1:A:2663:CYS:SG	1:A:2709:ARG:HG2	2.60	0.41
1:A:576:THR:HA	1:A:620:ILE:HD11	2.01	0.41
1:A:485:ASP:HB3	1:A:489:ARG:HH21	1.85	0.41
1:A:320:TRP:CZ3	1:A:322:ALA:HA	2.56	0.41
1:A:2602:ILE:H	1:A:2602:ILE:HG12	1.68	0.41
1:A:878:LEU:HD21	1:A:902:MET:SD	2.60	0.41
1:A:1558:ASN:O	1:A:1562:ILE:HG12	2.20	0.41
1:A:1844:VAL:HG13	1:A:1918:PHE:CE2	2.55	0.41
1:A:3154:TYR:HE2	1:A:3197:ILE:HG23	1.85	0.41
1:A:3107:ARG:HH22	1:A:3147:GLN:HB3	1.86	0.41
1:A:796:THR:OG1	1:A:802:ASP:HB2	2.20	0.41
1:A:504:ASN:OD1	1:A:504:ASN:C	2.59	0.41
1:A:920:PHE:CZ	1:A:1383:LEU:HD13	2.56	0.41
1:A:973:ILE:HB	1:A:1147:ILE:HG13	2.03	0.41
1:A:1910:MET:HE3	1:A:1910:MET:HB3	1.76	0.41
1:A:2190:LYS:HD3	1:A:2190:LYS:HA	1.91	0.41
1:A:2453:PRO:HB3	1:A:2804:LEU:HD22	2.03	0.41
1:A:2773:ILE:HD11	1:A:2783:LEU:HD13	2.03	0.41
1:A:472:SER:OG	1:A:475:ASP:OD1	2.34	0.41
1:A:716:LEU:HD23	1:A:716:LEU:HA	1.86	0.41
1:A:1356:HIS:HE1	1:A:1368:ALA:HB2	1.86	0.41
1:A:1630:LEU:HD22	1:A:1635:ILE:HG22	2.03	0.41
1:A:881:ARG:HB3	1:A:899:ILE:HD11	2.02	0.40
1:A:2807:GLN:H	1:A:2807:GLN:HG3	1.66	0.40
1:A:3215:THR:HG21	1:A:3221:LEU:HD12	2.02	0.40

Continued on next page...

Continued from previous page...

Atom-1	Atom-2	Interatomic distance (Å)	Clash overlap (Å)
1:A:2564:GLU:HB3	1:A:2623:TRP:CE3	2.57	0.40
1:A:947:LEU:O	1:A:948:HIS:ND1	2.46	0.40
1:A:2236:LYS:HE3	1:A:2236:LYS:HB3	1.92	0.40
1:A:2838:ARG:HB3	1:A:2880:LYS:HD3	2.03	0.40

There are no symmetry-related clashes.

5.3 Torsion angles [i](#)

5.3.1 Protein backbone [i](#)

In the following table, the Percentiles column shows the percent Ramachandran outliers of the chain as a percentile score with respect to all PDB entries followed by that with respect to all EM entries.

The Analysed column shows the number of residues for which the backbone conformation was analysed, and the total number of residues.

Mol	Chain	Analysed	Favoured	Allowed	Outliers	Percentiles	
1	A	2783/3229 (86%)	2717 (98%)	66 (2%)	0	100	100

There are no Ramachandran outliers to report.

5.3.2 Protein sidechains [i](#)

In the following table, the Percentiles column shows the percent sidechain outliers of the chain as a percentile score with respect to all PDB entries followed by that with respect to all EM entries.

The Analysed column shows the number of residues for which the sidechain conformation was analysed, and the total number of residues.

Mol	Chain	Analysed	Rotameric	Outliers	Percentiles	
1	A	2485/2885 (86%)	2399 (96%)	86 (4%)	31	65

All (86) residues with a non-rotameric sidechain are listed below:

Mol	Chain	Res	Type
1	A	250	ARG
1	A	256	ASN

Continued on next page...

Continued from previous page...

Mol	Chain	Res	Type
1	A	263	SER
1	A	265	ASN
1	A	272	LYS
1	A	331	ASP
1	A	354	PHE
1	A	383	ASN
1	A	399	ASN
1	A	429	PHE
1	A	455	GLU
1	A	503	GLU
1	A	561	MET
1	A	570	PHE
1	A	574	MET
1	A	656	HIS
1	A	660	ASP
1	A	698	ARG
1	A	811	VAL
1	A	822	TRP
1	A	854	ILE
1	A	994	MET
1	A	1120	PHE
1	A	1124	HIS
1	A	1151	ASP
1	A	1210	HIS
1	A	1214	ASP
1	A	1325	ASN
1	A	1336	SER
1	A	1410	LYS
1	A	1456	MET
1	A	1466	ASP
1	A	1480	CYS
1	A	1528	MET
1	A	1533	SER
1	A	1539	GLN
1	A	1647	ASP
1	A	1685	ILE
1	A	1690	LYS
1	A	1809	SER
1	A	1815	LEU
1	A	1822	ARG
1	A	1825	LEU
1	A	1863	MET

Continued on next page...

Continued from previous page...

Mol	Chain	Res	Type
1	A	1879	ARG
1	A	1897	MET
1	A	1912	GLN
1	A	1948	MET
1	A	1986	TYR
1	A	2086	ARG
1	A	2174	ASN
1	A	2175	TRP
1	A	2265	LYS
1	A	2276	GLU
1	A	2320	LYS
1	A	2412	HIS
1	A	2420	HIS
1	A	2427	LEU
1	A	2460	ASP
1	A	2474	THR
1	A	2500	GLN
1	A	2554	ASP
1	A	2572	VAL
1	A	2584	GLN
1	A	2645	ASN
1	A	2648	MET
1	A	2653	ARG
1	A	2663	CYS
1	A	2694	THR
1	A	2708	SER
1	A	2715	GLU
1	A	2738	GLU
1	A	2769	ARG
1	A	2781	LEU
1	A	2829	ASP
1	A	2880	LYS
1	A	2881	GLU
1	A	2956	ASP
1	A	2962	GLN
1	A	2988	LEU
1	A	3060	TYR
1	A	3068	ARG
1	A	3073	SER
1	A	3117	TRP
1	A	3144	PHE
1	A	3147	GLN

Sometimes sidechains can be flipped to improve hydrogen bonding and reduce clashes. There are no such sidechains identified.

5.3.3 RNA [i](#)

There are no RNA molecules in this entry.

5.4 Non-standard residues in protein, DNA, RNA chains [i](#)

There are no non-standard protein/DNA/RNA residues in this entry.

5.5 Carbohydrates [i](#)

There are no oligosaccharides in this entry.

5.6 Ligand geometry [i](#)

There are no ligands in this entry.

5.7 Other polymers [i](#)

There are no such residues in this entry.

5.8 Polymer linkage issues [i](#)

There are no chain breaks in this entry.

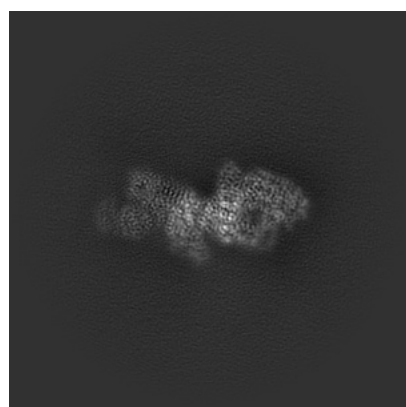
6 Map visualisation [i](#)

This section contains visualisations of the EMDB entry EMD-19987. These allow visual inspection of the internal detail of the map and identification of artifacts.

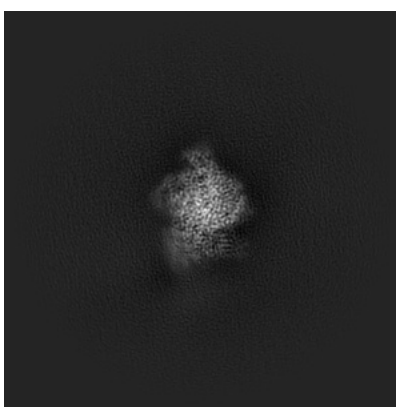
No raw map or half-maps were deposited for this entry and therefore no images, graphs, etc. pertaining to the raw map can be shown.

6.1 Orthogonal projections [i](#)

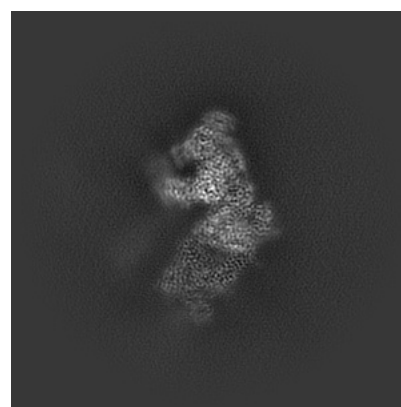
6.1.1 Primary map



X



Y

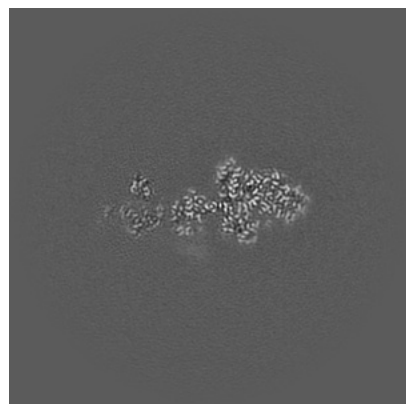


Z

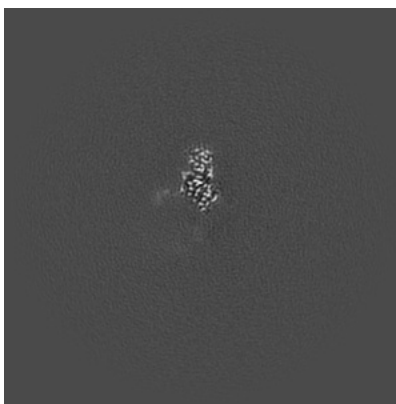
The images above show the map projected in three orthogonal directions.

6.2 Central slices [i](#)

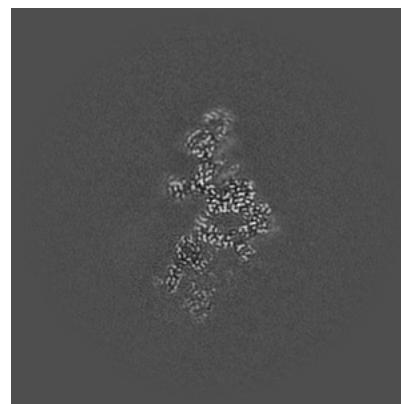
6.2.1 Primary map



X Index: 200



Y Index: 200

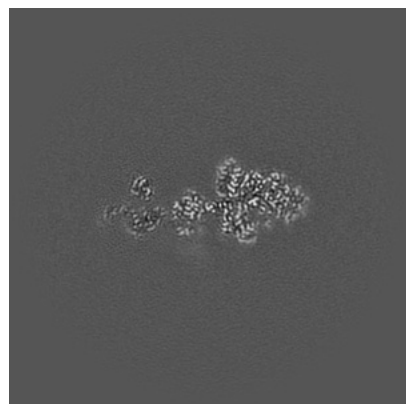


Z Index: 200

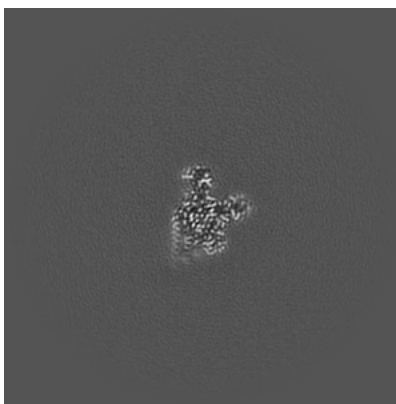
The images above show central slices of the map in three orthogonal directions.

6.3 Largest variance slices [i](#)

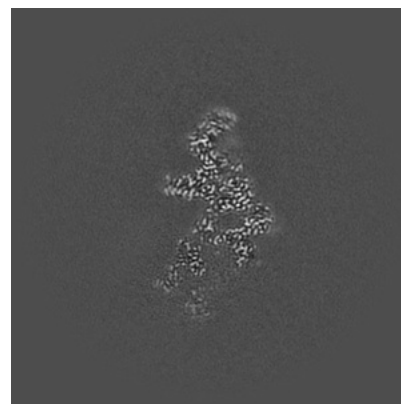
6.3.1 Primary map



X Index: 199



Y Index: 218

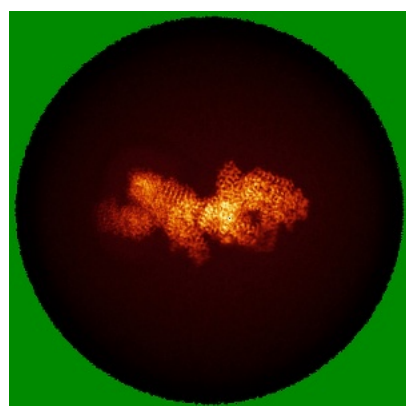


Z Index: 204

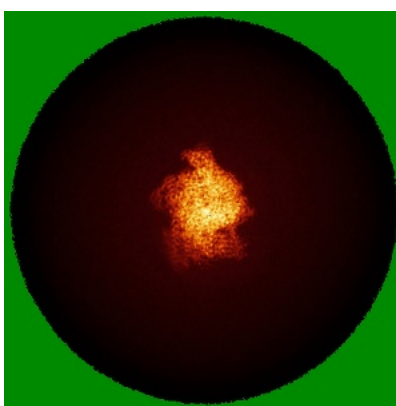
The images above show the largest variance slices of the map in three orthogonal directions.

6.4 Orthogonal standard-deviation projections (False-color) [i](#)

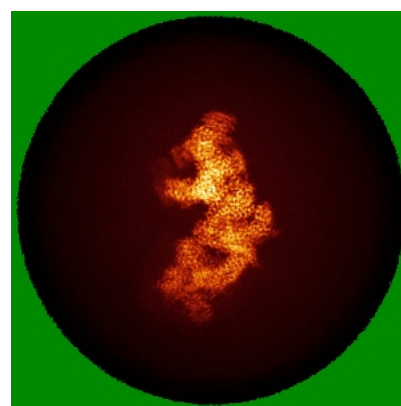
6.4.1 Primary map



X



Y



Z

The images above show the map standard deviation projections with false color in three orthogonal directions. Minimum values are shown in green, max in blue, and dark to light orange shades represent small to large values respectively.

6.5 Orthogonal surface views [i](#)

6.5.1 Primary map



The images above show the 3D surface view of the map at the recommended contour level 5.0. These images, in conjunction with the slice images, may facilitate assessment of whether an appropriate contour level has been provided.

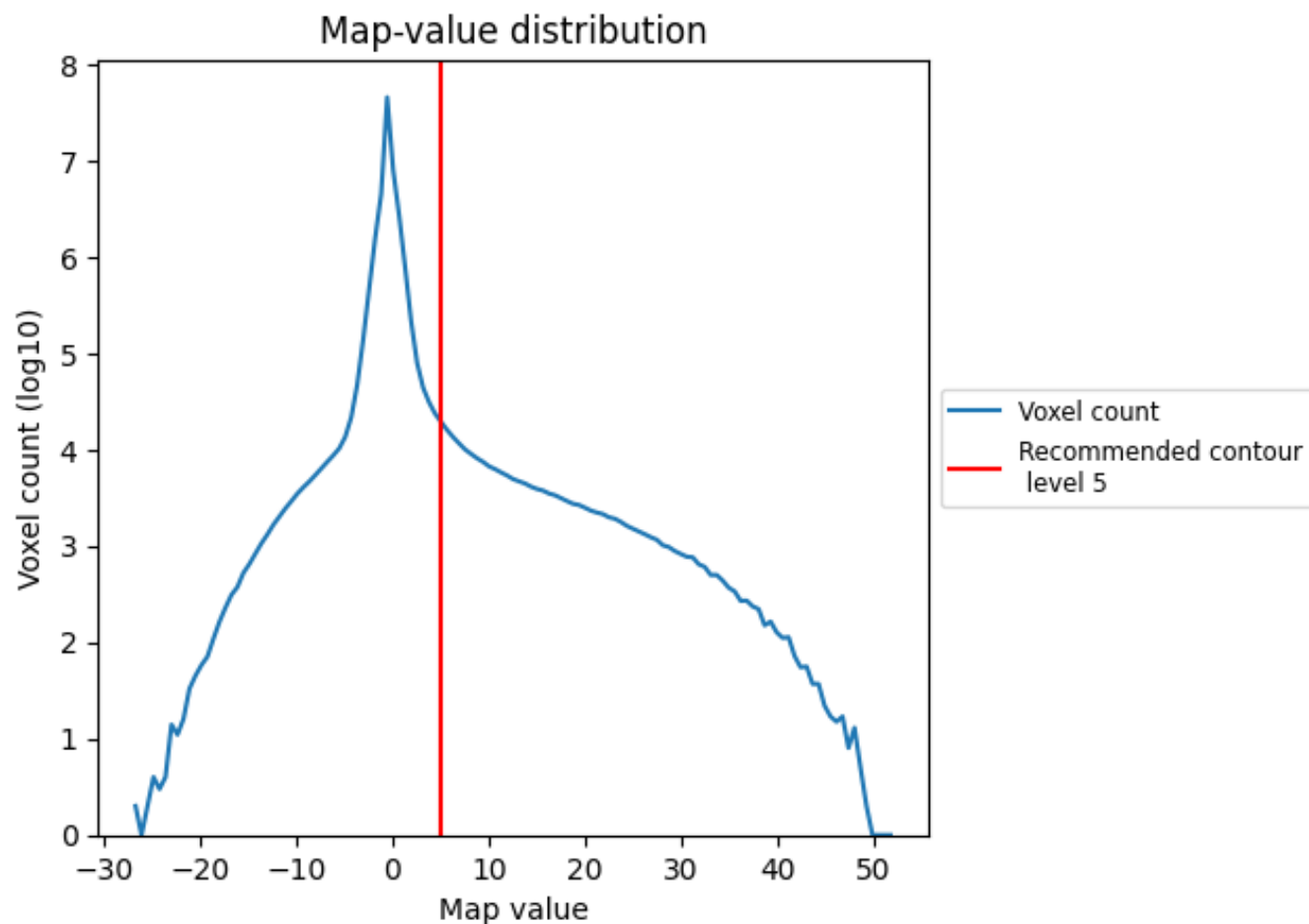
6.6 Mask visualisation [i](#)

This section was not generated. No masks/segmentation were deposited.

7 Map analysis [i](#)

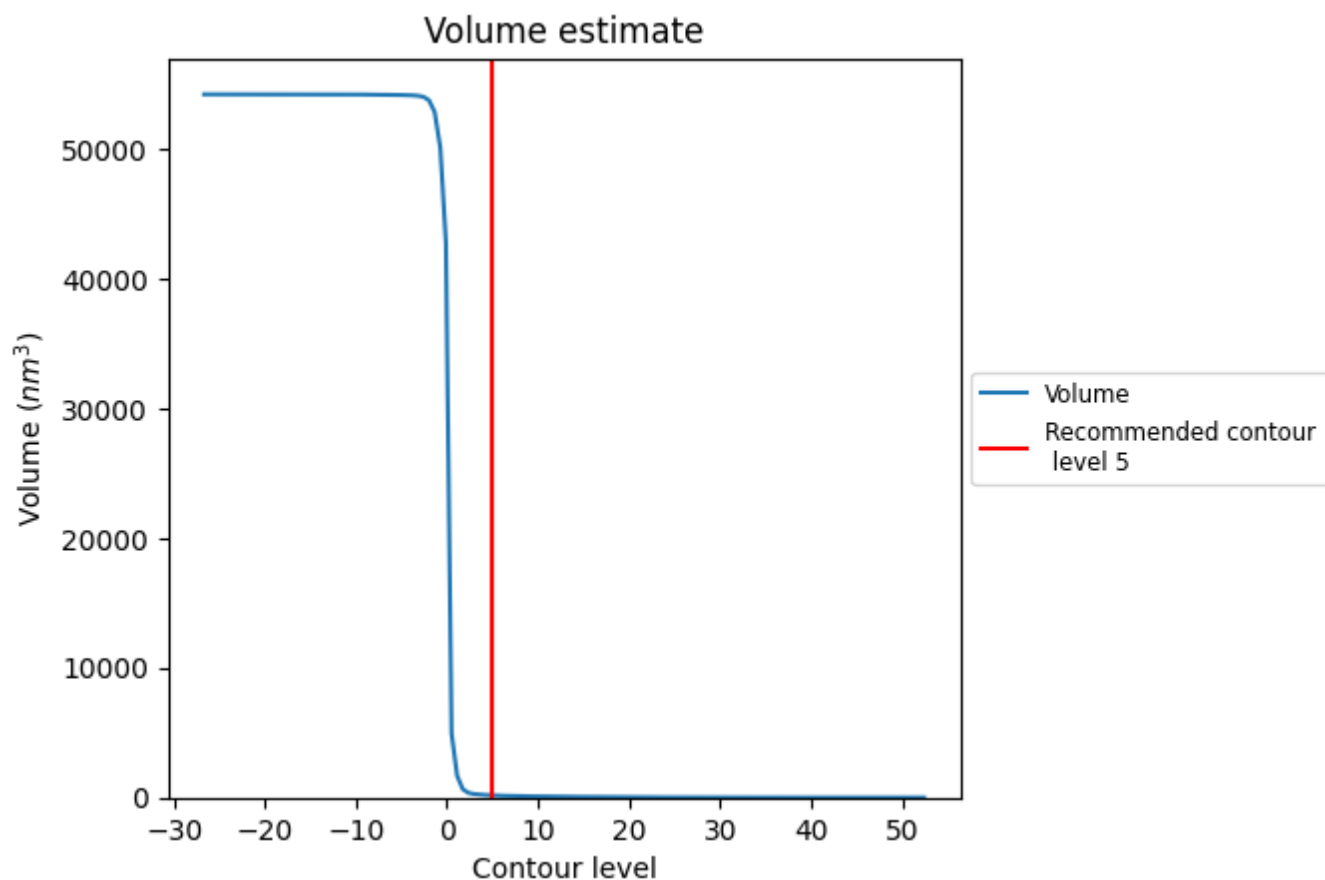
This section contains the results of statistical analysis of the map.

7.1 Map-value distribution [i](#)



The map-value distribution is plotted in 128 intervals along the x-axis. The y-axis is logarithmic. A spike in this graph at zero usually indicates that the volume has been masked.

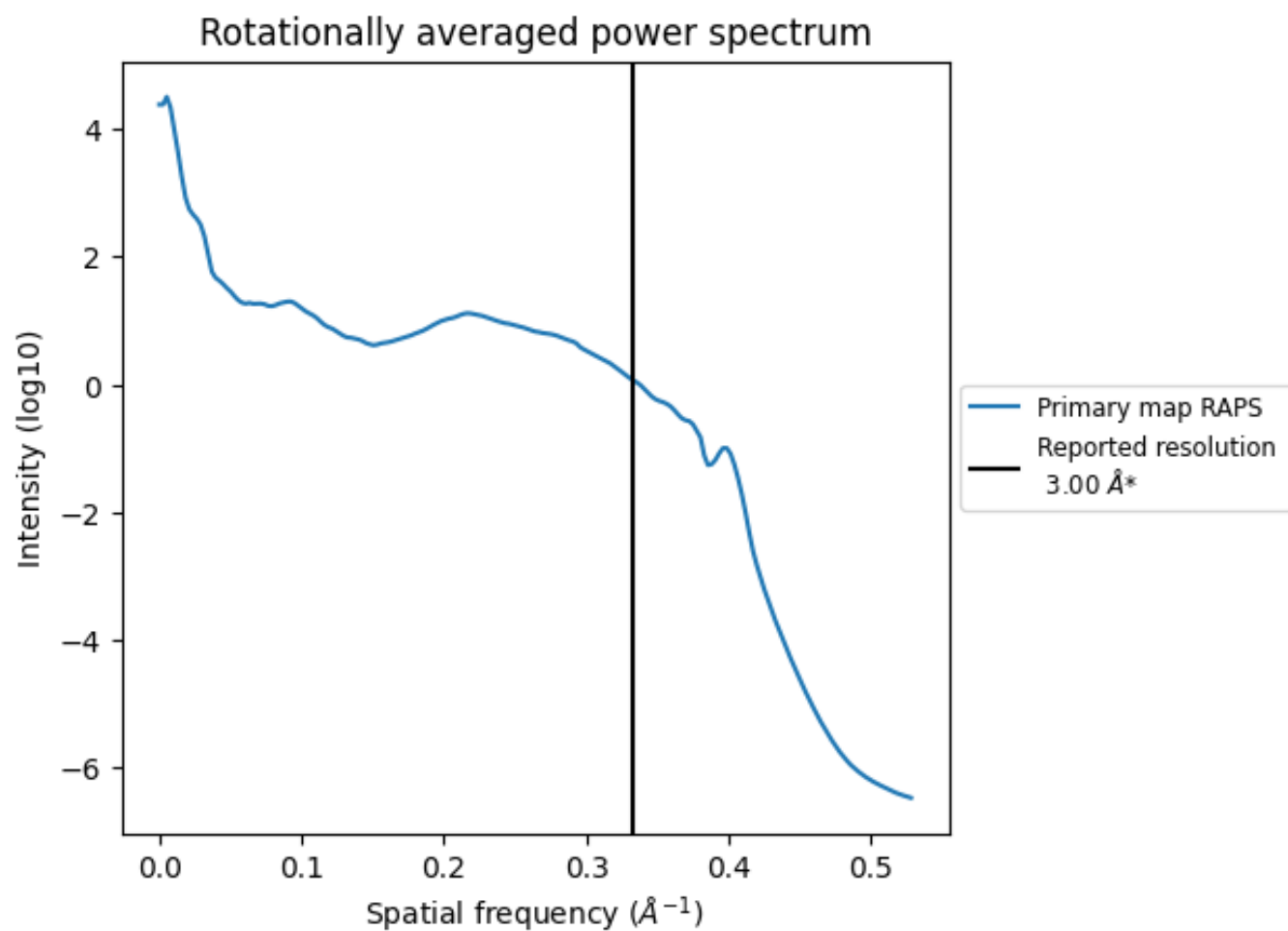
7.2 Volume estimate [i](#)



The volume at the recommended contour level is 169 nm^3 ; this corresponds to an approximate mass of 153 kDa.

The volume estimate graph shows how the enclosed volume varies with the contour level. The recommended contour level is shown as a vertical line and the intersection between the line and the curve gives the volume of the enclosed surface at the given level.

7.3 Rotationally averaged power spectrum ⓘ



*Reported resolution corresponds to spatial frequency of 0.333 Å⁻¹

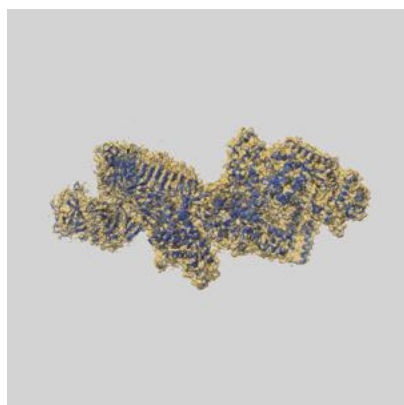
8 Fourier-Shell correlation ⓘ

This section was not generated. No FSC curve or half-maps provided.

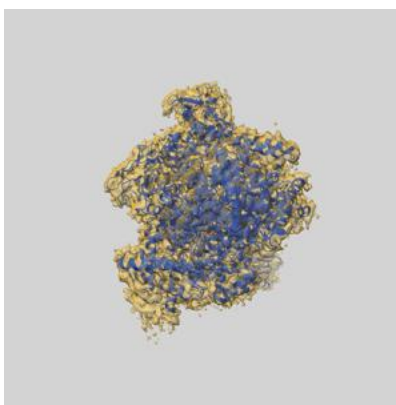
9 Map-model fit [i](#)

This section contains information regarding the fit between EMDB map EMD-19987 and PDB model 9EUV. Per-residue inclusion information can be found in [section 3](#) on [page 4](#).

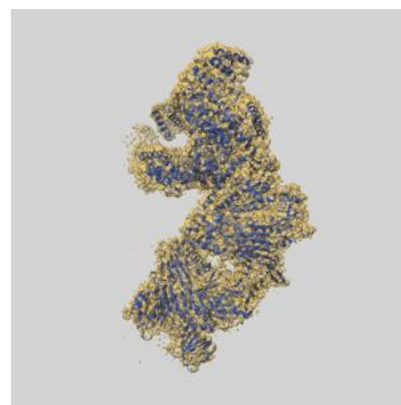
9.1 Map-model overlay [i](#)



X



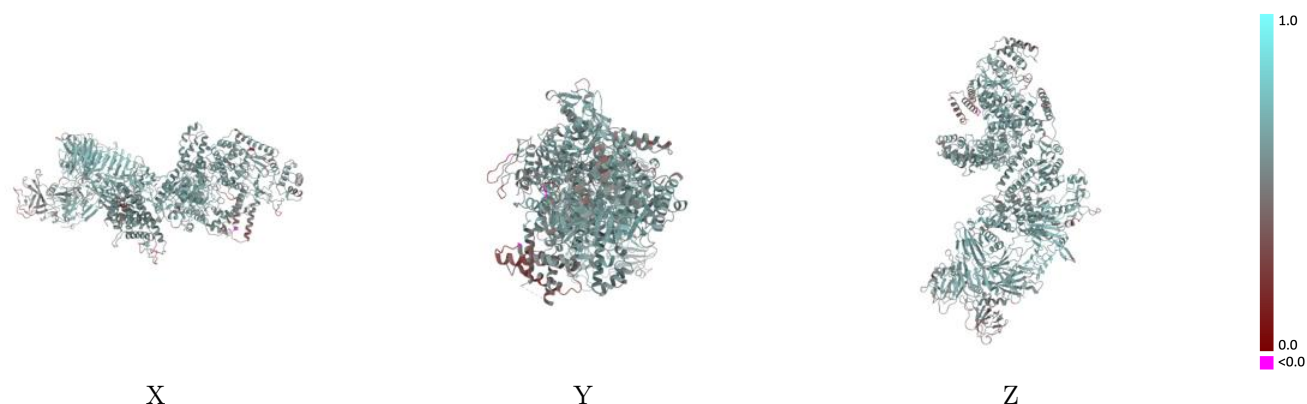
Y



Z

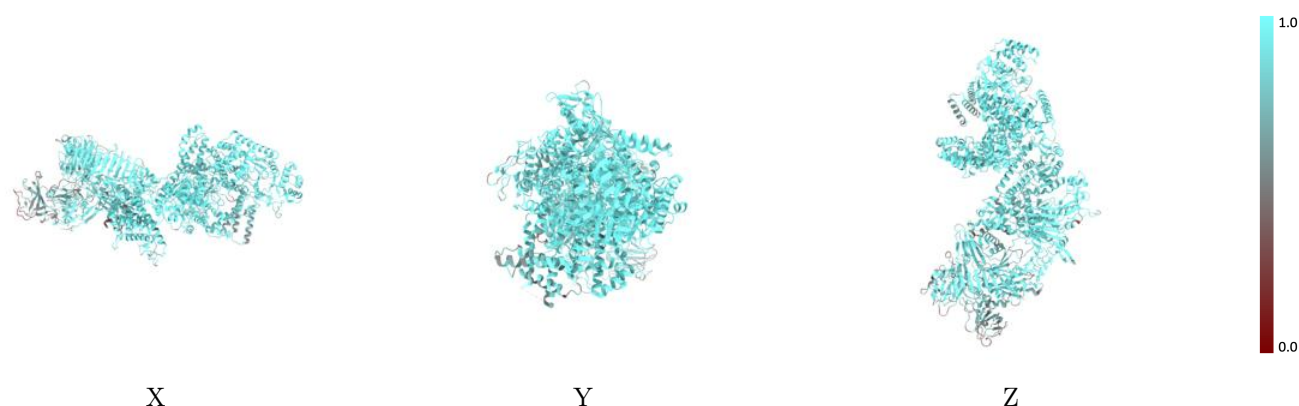
The images above show the 3D surface view of the map at the recommended contour level 5.0 at 50% transparency in yellow overlaid with a ribbon representation of the model coloured in blue. These images allow for the visual assessment of the quality of fit between the atomic model and the map.

9.2 Q-score mapped to coordinate model [i](#)



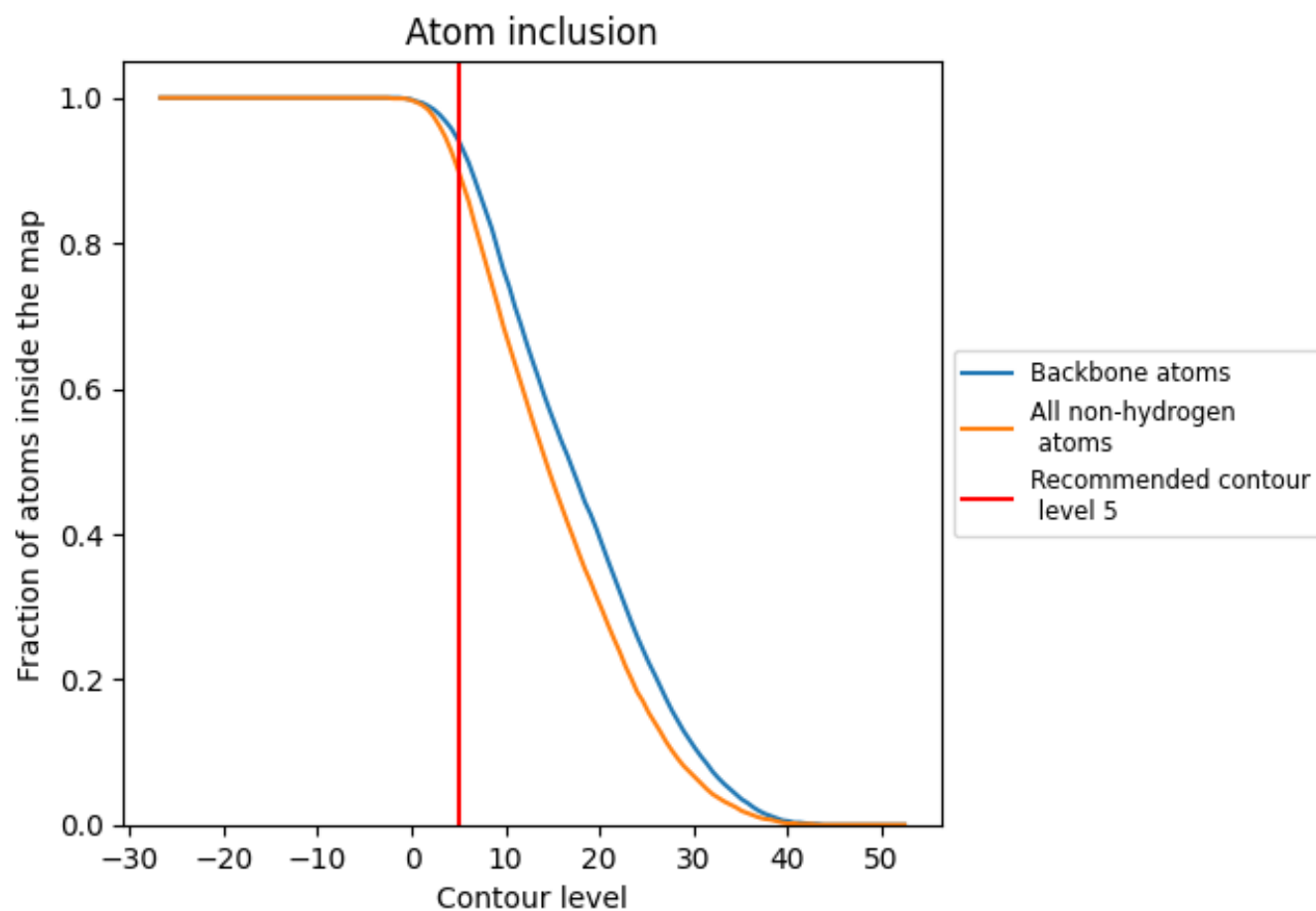
The images above show the model with each residue coloured according to its Q-score. This shows their resolvability in the map with higher Q-score values reflecting better resolvability. Please note: Q-score is calculating the resolvability of atoms, and thus high values are only expected at resolutions at which atoms can be resolved. Low Q-score values may therefore be expected for many entries.

9.3 Atom inclusion mapped to coordinate model [i](#)



The images above show the model with each residue coloured according to its atom inclusion. This shows to what extent they are inside the map at the recommended contour level (5).

9.4 Atom inclusion [i](#)



At the recommended contour level, 94% of all backbone atoms, 90% of all non-hydrogen atoms, are inside the map.

9.5 Map-model fit summary ⓘ

The table lists the average atom inclusion at the recommended contour level (5) and Q-score for the entire model and for each chain.

Chain	Atom inclusion	Q-score
All	<div><div></div></div> 0.8990	<div><div></div></div> 0.5650
A	<div><div></div></div> 0.8990	<div><div></div></div> 0.5650

