



wwPDB X-ray Structure Validation Summary Report ⓘ

Apr 22, 2025 – 01:36 pm BST

PDB ID : 9F1A / pdb_00009f1a
Title : Crystal structure of human soluble epoxide hydrolase C-terminal domain in complex with a benzohomoadamantane-based urea inhibitor
Authors : Qiu, Q.; Prischi, F.; Jora, B.; Vazquez, S.; Conte, M.R.
Deposited on : 2024-04-18
Resolution : 2.80 Å(reported)

This is a wwPDB X-ray Structure Validation Summary Report for a publicly released PDB entry.

We welcome your comments at validation@mail.wwpdb.org

A user guide is available at

<https://www.wwpdb.org/validation/2017/XrayValidationReportHelp>

with specific help available everywhere you see the ⓘ symbol.

The types of validation reports are described at

<http://www.wwpdb.org/validation/2017/FAQs#types>.

The following versions of software and data (see [references ⓘ](#)) were used in the production of this report:

MolProbity : 4.02b-467
Mogul : 1.8.4, CSD as541be (2020)
Xtriage (Phenix) : 1.13
EDS : 3.0
buster-report : 1.1.7 (2018)
Percentile statistics : 20231227.v01 (using entries in the PDB archive December 27th 2023)
CCP4 : 9.0.003 (Gargrove)
Density-Fitness : 1.0.11
Ideal geometry (proteins) : Engh & Huber (2001)
Ideal geometry (DNA, RNA) : Parkinson et al. (1996)
Validation Pipeline (wwPDB-VP) : 2.42

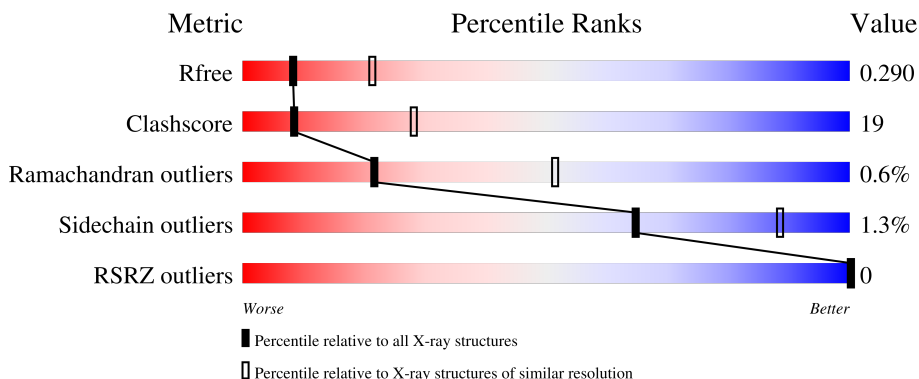
1 Overall quality at a glance

The following experimental techniques were used to determine the structure:

X-RAY DIFFRACTION

The reported resolution of this entry is 2.80 Å.

Percentile scores (ranging between 0-100) for global validation metrics of the entry are shown in the following graphic. The table shows the number of entries on which the scores are based.



Metric	Whole archive (#Entries)	Similar resolution (#Entries, resolution range(Å))
R_{free}	164625	3657 (2.80-2.80)
Clashscore	180529	4123 (2.80-2.80)
Ramachandran outliers	177936	4071 (2.80-2.80)
Sidechain outliers	177891	4073 (2.80-2.80)
RSRZ outliers	164620	3659 (2.80-2.80)

The table below summarises the geometric issues observed across the polymeric chains and their fit to the electron density. The red, orange, yellow and green segments of the lower bar indicate the fraction of residues that contain outliers for ≥ 3 , 2, 1 and 0 types of geometric quality criteria respectively. A grey segment represents the fraction of residues that are not modelled. The numeric value for each fraction is indicated below the corresponding segment, with a dot representing fractions $\leq 5\%$. The upper red bar (where present) indicates the fraction of residues that have poor fit to the electron density. The numeric value is given above the bar.

Mol	Chain	Length	Quality of chain
1	A	344	
1	B	344	

2 Entry composition

There are 2 unique types of molecules in this entry. The entry contains 5497 atoms, of which 215 are hydrogens and 0 are deuteriums.

In the tables below, the ZeroOcc column contains the number of atoms modelled with zero occupancy, the AltConf column contains the number of residues with at least one atom in alternate conformation and the Trace column contains the number of residues modelled with at most 2 atoms.

- Molecule 1 is a protein called Bifunctional epoxide hydrolase 2.

Mol	Chain	Residues	Atoms					ZeroOcc	AltConf	Trace
1	A	316	Total	C	N	O	S	0	0	0
			2546	1636	426	461	23			
1	B	316	Total	C	N	O	S	0	0	0
			2546	1636	426	461	23			

There are 36 discrepancies between the modelled and reference sequences:

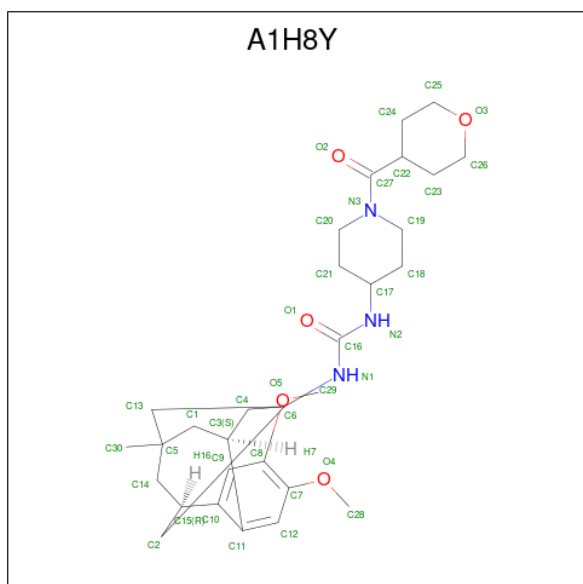
Chain	Residue	Modelled	Actual	Comment	Reference
A	212	MET	-	initiating methionine	UNP P34913
A	213	HIS	-	expression tag	UNP P34913
A	214	HIS	-	expression tag	UNP P34913
A	215	HIS	-	expression tag	UNP P34913
A	216	HIS	-	expression tag	UNP P34913
A	217	HIS	-	expression tag	UNP P34913
A	218	HIS	-	expression tag	UNP P34913
A	219	SER	-	expression tag	UNP P34913
A	220	THR	-	expression tag	UNP P34913
A	221	GLU	-	expression tag	UNP P34913
A	222	ASN	-	expression tag	UNP P34913
A	223	LEU	-	expression tag	UNP P34913
A	224	TYR	-	expression tag	UNP P34913
A	225	PHE	-	expression tag	UNP P34913
A	226	GLN	-	expression tag	UNP P34913
A	227	GLY	-	expression tag	UNP P34913
A	228	SER	-	expression tag	UNP P34913
A	229	SER	-	expression tag	UNP P34913
B	212	MET	-	initiating methionine	UNP P34913
B	213	HIS	-	expression tag	UNP P34913
B	214	HIS	-	expression tag	UNP P34913
B	215	HIS	-	expression tag	UNP P34913
B	216	HIS	-	expression tag	UNP P34913
B	217	HIS	-	expression tag	UNP P34913
B	218	HIS	-	expression tag	UNP P34913

Continued on next page...

Continued from previous page...

Chain	Residue	Modelled	Actual	Comment	Reference
B	219	SER	-	expression tag	UNP P34913
B	220	THR	-	expression tag	UNP P34913
B	221	GLU	-	expression tag	UNP P34913
B	222	ASN	-	expression tag	UNP P34913
B	223	LEU	-	expression tag	UNP P34913
B	224	TYR	-	expression tag	UNP P34913
B	225	PHE	-	expression tag	UNP P34913
B	226	GLN	-	expression tag	UNP P34913
B	227	GLY	-	expression tag	UNP P34913
B	228	SER	-	expression tag	UNP P34913
B	229	SER	-	expression tag	UNP P34913

- Molecule 2 is 1-(2,3-dimethoxy-9-methyl-5,6,8,9,10,11-hexahydro-7H-5,9:7,11-dimethanobenzo[9]annulen-7-yl)-3-(1-(tetrahydro-2H-pyran-4-carbonyl)piperidin-4-yl)urea (CCD ID: A1H8Y) (formula: C₃₀H₄₃N₃O₅) (labeled as "Ligand of Interest" by depositor).



Mol	Chain	Residues	Atoms					ZeroOcc	AltConf
2	A	1	Total	C	H	N	O	0	1
			243	90	129	9	15		
2	B	1	Total	C	H	N	O	0	1
			162	60	86	6	10		

4 Data and refinement statistics

Property	Value	Source
Space group	I 1 2 1	Depositor
Cell constants a, b, c, α , β , γ	93.02Å 81.76Å 108.11Å 90.00° 90.54° 90.00°	Depositor
Resolution (Å)	70.84 – 2.80 70.84 – 2.80	Depositor EDS
% Data completeness (in resolution range)	98.0 (70.84-2.80) 97.2 (70.84-2.80)	Depositor EDS
R_{merge}	(Not available)	Depositor
R_{sym}	(Not available)	Depositor
$\langle I/\sigma(I) \rangle$ ¹	1.04 (at 2.42Å)	Xtriage
Refinement program	PHENIX 1.20.1_4487	Depositor
R, R_{free}	0.220 , 0.292 0.220 , 0.290	Depositor DCC
R_{free} test set	970 reflections (4.83%)	wwPDB-VP
Wilson B-factor (Å ²)	44.7	Xtriage
Anisotropy	0.667	Xtriage
Bulk solvent k_{sol} (e/Å ³), B_{sol} (Å ²)	0.34 , 52.4	EDS
L-test for twinning ²	$\langle L \rangle = 0.44$, $\langle L^2 \rangle = 0.26$	Xtriage
Estimated twinning fraction	0.237 for h,-k,-l	Xtriage
F_o, F_c correlation	0.94	EDS
Total number of atoms	5497	wwPDB-VP
Average B, all atoms (Å ²)	51.0	wwPDB-VP

Xtriage's analysis on translational NCS is as follows: *The largest off-origin peak in the Patterson function is 6.48% of the height of the origin peak. No significant pseudotranslation is detected.*

¹Intensities estimated from amplitudes.

²Theoretical values of $\langle |L| \rangle$, $\langle L^2 \rangle$ for acentric reflections are 0.5, 0.333 respectively for untwinned datasets, and 0.375, 0.2 for perfectly twinned datasets.

5 Model quality [i](#)

5.1 Standard geometry [i](#)

Bond lengths and bond angles in the following residue types are not validated in this section: A1H8Y

The Z score for a bond length (or angle) is the number of standard deviations the observed value is removed from the expected value. A bond length (or angle) with $|Z| > 5$ is considered an outlier worth inspection. RMSZ is the root-mean-square of all Z scores of the bond lengths (or angles).

Mol	Chain	Bond lengths		Bond angles	
		RMSZ	$\# Z > 5$	RMSZ	$\# Z > 5$
1	A	0.57	0/2622	0.76	2/3557 (0.1%)
1	B	0.56	0/2622	0.76	1/3557 (0.0%)
All	All	0.56	0/5244	0.76	3/7114 (0.0%)

There are no bond length outliers.

All (3) bond angle outliers are listed below:

Mol	Chain	Res	Type	Atoms	Z	Observed(°)	Ideal(°)
1	A	255	LEU	CA-CB-CG	6.19	129.54	115.30
1	A	482	ARG	CG-CD-NE	5.86	124.11	111.80
1	B	236	ASP	CB-CG-OD1	5.39	123.15	118.30

There are no chirality outliers.

There are no planarity outliers.

5.2 Too-close contacts [i](#)

In the following table, the Non-H and H(model) columns list the number of non-hydrogen atoms and hydrogen atoms in the chain respectively. The H(added) column lists the number of hydrogen atoms added and optimized by MolProbity. The Clashes column lists the number of clashes within the asymmetric unit, whereas Symm-Clashes lists symmetry-related clashes.

Mol	Chain	Non-H	H(model)	H(added)	Clashes	Symm-Clashes
1	A	2546	0	2473	94	0
1	B	2546	0	2473	97	0
2	A	114	129	0	4	0
2	B	76	86	0	2	0
All	All	5282	215	4946	191	0

The all-atom clashscore is defined as the number of clashes found per 1000 atoms (including hydrogen atoms). The all-atom clashscore for this structure is 19.

The worst 5 of 191 close contacts within the same asymmetric unit are listed below, sorted by their clash magnitude.

Atom-1	Atom-2	Interatomic distance (Å)	Clash overlap (Å)
1:B:331:PHE:HB3	1:B:341:VAL:HG12	1.47	0.94
1:B:331:PHE:HB3	1:B:341:VAL:CG1	2.04	0.88
1:B:261:VAL:HG12	1:B:263:LEU:HD21	1.56	0.87
1:A:306:GLU:HG3	1:A:471:ARG:HH22	1.41	0.85
1:B:243:THR:O	1:B:323:LYS:NZ	2.08	0.85

There are no symmetry-related clashes.

5.3 Torsion angles [i](#)

5.3.1 Protein backbone [i](#)

In the following table, the Percentiles column shows the percent Ramachandran outliers of the chain as a percentile score with respect to all X-ray entries followed by that with respect to entries of similar resolution.

The Analysed column shows the number of residues for which the backbone conformation was analysed, and the total number of residues.

Mol	Chain	Analysed	Favoured	Allowed	Outliers	Percentiles	
1	A	314/344 (91%)	293 (93%)	19 (6%)	2 (1%)	22	51
1	B	314/344 (91%)	295 (94%)	17 (5%)	2 (1%)	22	51
All	All	628/688 (91%)	588 (94%)	36 (6%)	4 (1%)	22	51

All (4) Ramachandran outliers are listed below:

Mol	Chain	Res	Type
1	B	392	VAL
1	A	392	VAL
1	A	268	PRO
1	B	268	PRO

5.3.2 Protein sidechains [i](#)

In the following table, the Percentiles column shows the percent sidechain outliers of the chain as a percentile score with respect to all X-ray entries followed by that with respect to entries of similar resolution.

The Analysed column shows the number of residues for which the sidechain conformation was analysed, and the total number of residues.

Mol	Chain	Analysed	Rotameric	Outliers	Percentiles	
1	A	278/304 (91%)	274 (99%)	4 (1%)	62	87
1	B	278/304 (91%)	275 (99%)	3 (1%)	70	90
All	All	556/608 (91%)	549 (99%)	7 (1%)	65	88

5 of 7 residues with a non-rotameric sidechain are listed below:

Mol	Chain	Res	Type
1	A	482	ARG
1	B	355	VAL
1	B	412	SER
1	B	370	SER
1	A	375	ILE

Sometimes sidechains can be flipped to improve hydrogen bonding and reduce clashes. All (2) such sidechains are listed below:

Mol	Chain	Res	Type
1	A	384	GLN
1	B	384	GLN

5.3.3 RNA [i](#)

There are no RNA molecules in this entry.

5.4 Non-standard residues in protein, DNA, RNA chains [i](#)

There are no non-standard protein/DNA/RNA residues in this entry.

5.5 Carbohydrates [i](#)

There are no oligosaccharides in this entry.

5.6 Ligand geometry

5 ligands are modelled in this entry.

In the following table, the Counts columns list the number of bonds (or angles) for which Mogul statistics could be retrieved, the number of bonds (or angles) that are observed in the model and the number of bonds (or angles) that are defined in the Chemical Component Dictionary. The Link column lists molecule types, if any, to which the group is linked. The Z score for a bond length (or angle) is the number of standard deviations the observed value is removed from the expected value. A bond length (or angle) with $|Z| > 2$ is considered an outlier worth inspection. RMSZ is the root-mean-square of all Z scores of the bond lengths (or angles).

Mol	Type	Chain	Res	Link	Bond lengths			Bond angles		
					Counts	RMSZ	$\# Z > 2$	Counts	RMSZ	$\# Z > 2$
2	A1H8Y	A	601[C]	-	43,43,43	4.17	23 (53%)	47,65,65	2.22	15 (31%)
2	A1H8Y	B	601[A]	-	43,43,43	4.20	23 (53%)	47,65,65	2.69	15 (31%)
2	A1H8Y	A	601[A]	-	43,43,43	4.22	24 (55%)	47,65,65	2.38	20 (42%)
2	A1H8Y	A	601[B]	-	43,43,43	4.21	24 (55%)	47,65,65	1.99	15 (31%)
2	A1H8Y	B	601[C]	-	43,43,43	4.27	22 (51%)	47,65,65	2.56	18 (38%)

In the following table, the Chirals column lists the number of chiral outliers, the number of chiral centers analysed, the number of these observed in the model and the number defined in the Chemical Component Dictionary. Similar counts are reported in the Torsion and Rings columns. '-' means no outliers of that kind were identified.

Mol	Type	Chain	Res	Link	Chirals	Torsions	Rings
2	A1H8Y	A	601[C]	-	-	10/21/73/73	0/5/6/6
2	A1H8Y	B	601[A]	-	-	11/21/73/73	1/5/6/6
2	A1H8Y	A	601[A]	-	-	6/21/73/73	1/5/6/6
2	A1H8Y	A	601[B]	-	-	4/21/73/73	0/5/6/6
2	A1H8Y	B	601[C]	-	-	7/21/73/73	1/5/6/6

The worst 5 of 116 bond length outliers are listed below:

Mol	Chain	Res	Type	Atoms	Z	Observed(Å)	Ideal(Å)
2	A	601[B]	A1H8Y	C4-C3	10.46	1.64	1.53
2	A	601[C]	A1H8Y	C4-C3	10.26	1.64	1.53
2	A	601[A]	A1H8Y	C4-C3	10.25	1.64	1.53
2	B	601[C]	A1H8Y	C4-C3	10.00	1.63	1.53
2	B	601[A]	A1H8Y	C4-C3	9.90	1.63	1.53

The worst 5 of 83 bond angle outliers are listed below:

Mol	Chain	Res	Type	Atoms	Z	Observed(°)	Ideal(°)
2	B	601[C]	A1H8Y	C13-C6-C2	9.09	115.28	108.99
2	B	601[A]	A1H8Y	C13-C6-C2	9.01	115.22	108.99
2	A	601[A]	A1H8Y	C22-C27-N3	7.79	127.73	118.80
2	B	601[A]	A1H8Y	C22-C27-N3	7.69	127.61	118.80
2	A	601[B]	A1H8Y	C13-C5-C1	7.00	113.04	108.68

There are no chirality outliers.

5 of 38 torsion outliers are listed below:

Mol	Chain	Res	Type	Atoms
2	A	601[A]	A1H8Y	C24-C22-C27-O2
2	A	601[C]	A1H8Y	C2-C6-N1-C16
2	A	601[C]	A1H8Y	C13-C6-N1-C16
2	A	601[C]	A1H8Y	C4-C6-N1-C16
2	B	601[A]	A1H8Y	C2-C6-N1-C16

All (3) ring outliers are listed below:

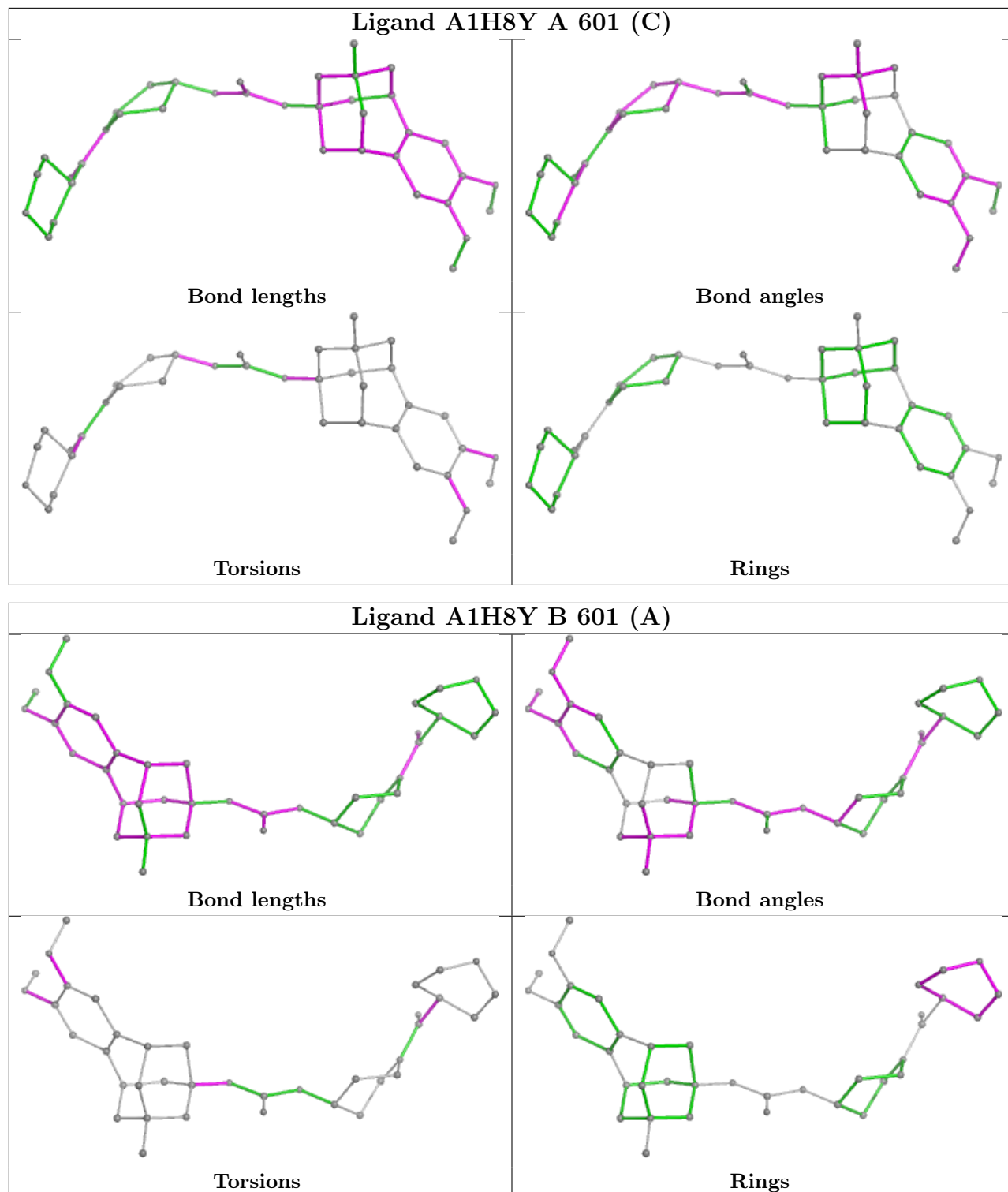
Mol	Chain	Res	Type	Atoms
2	A	601[A]	A1H8Y	C22-C23-C24-C25-C26-O3
2	B	601[A]	A1H8Y	C22-C23-C24-C25-C26-O3
2	B	601[C]	A1H8Y	C22-C23-C24-C25-C26-O3

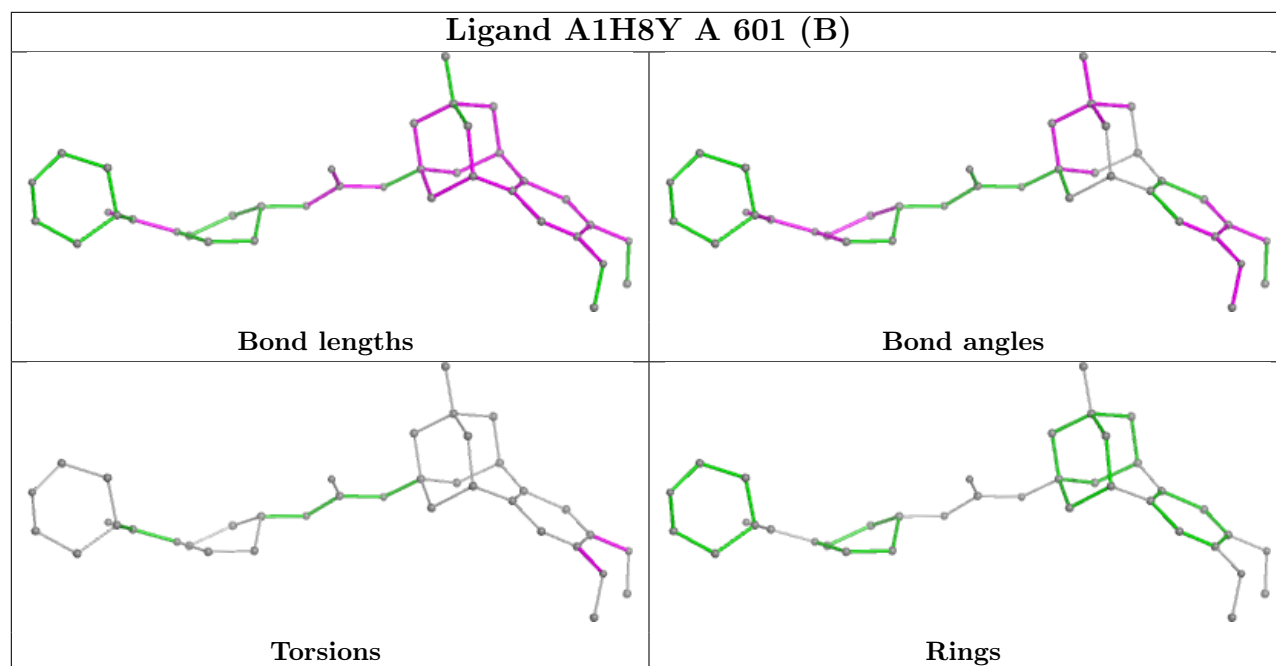
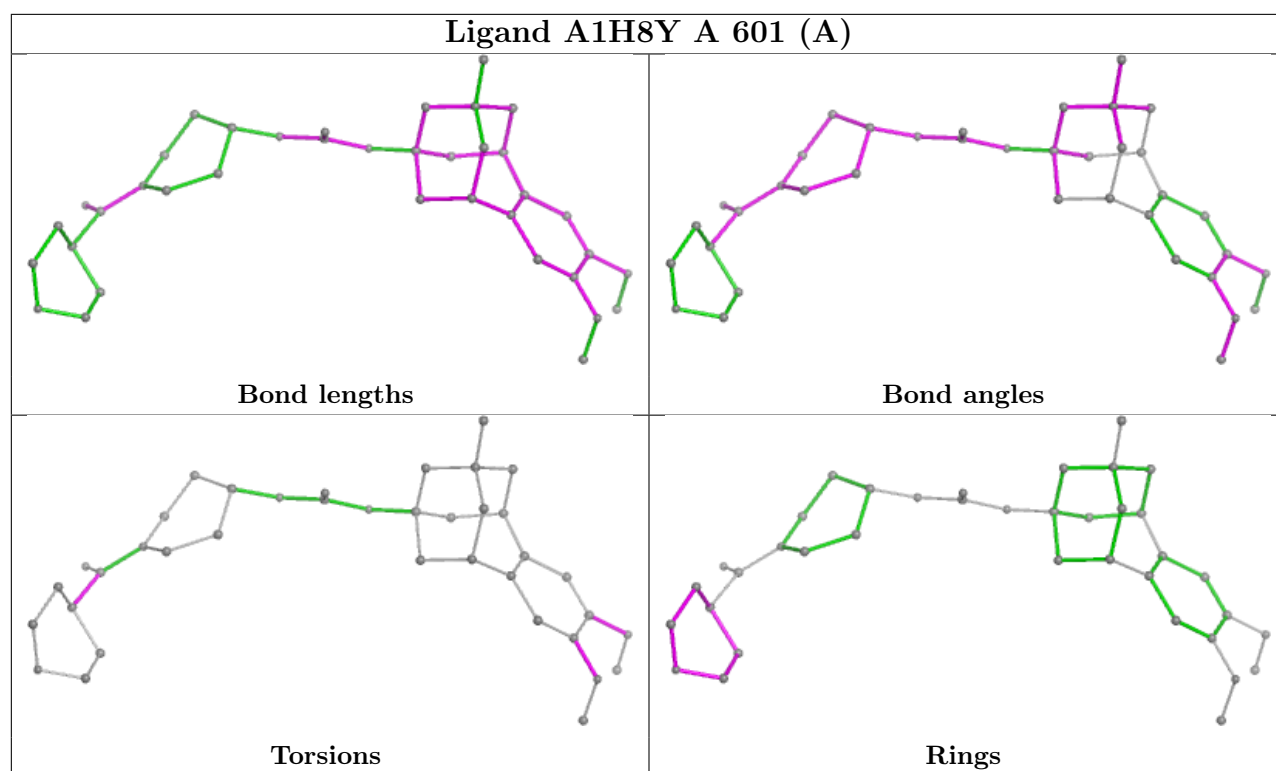
5 monomers are involved in 6 short contacts:

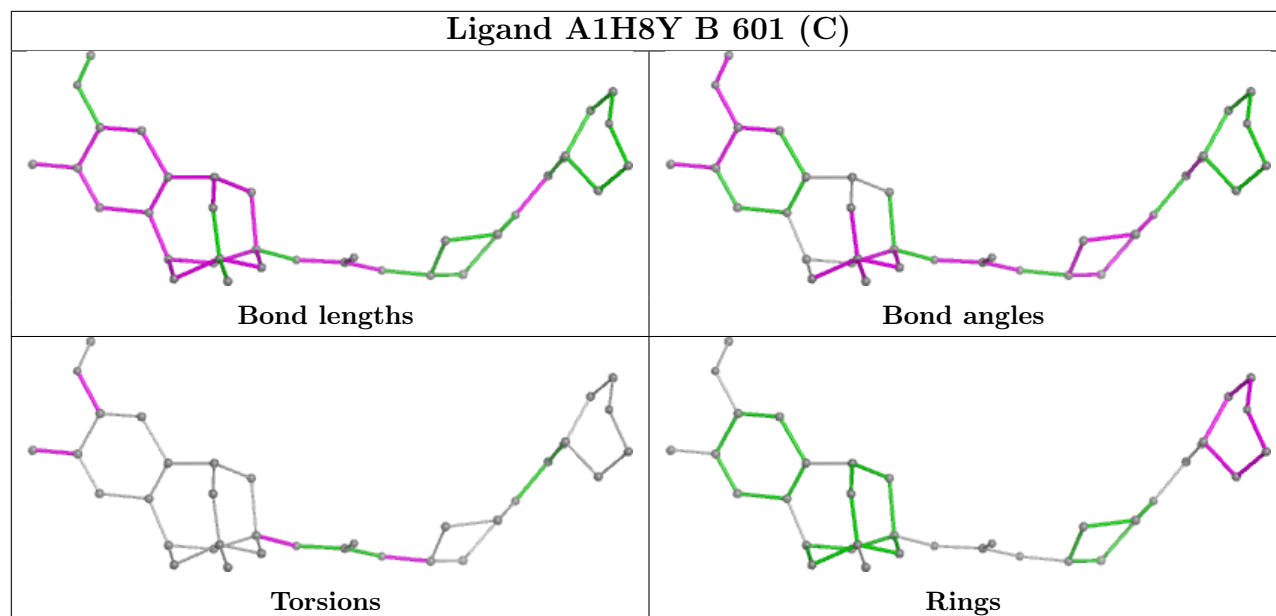
Mol	Chain	Res	Type	Clashes	Symm-Clashes
2	A	601[C]	A1H8Y	1	0
2	B	601[A]	A1H8Y	1	0
2	A	601[A]	A1H8Y	2	0
2	A	601[B]	A1H8Y	1	0
2	B	601[C]	A1H8Y	1	0

The following is a two-dimensional graphical depiction of Mogul quality analysis of bond lengths, bond angles, torsion angles, and ring geometry for all instances of the Ligand of Interest. In addition, ligands with molecular weight > 250 and outliers as shown on the validation Tables will also be included. For torsion angles, if less than 5% of the Mogul distribution of torsion angles is within 10 degrees of the torsion angle in question, then that torsion angle is considered an outlier. Any bond that is central to one or more torsion angles identified as an outlier by Mogul will be highlighted in the graph. For rings, the root-mean-square deviation (RMSD) between the ring in question and similar rings identified by Mogul is calculated over all ring torsion angles. If the average RMSD is greater than 60 degrees and the minimal RMSD between the ring in question and any Mogul-identified rings is also greater than 60 degrees, then that ring is considered an outlier. The outliers are highlighted in purple. The color gray indicates Mogul did not find sufficient

equivalents in the CSD to analyse the geometry.







5.7 Other polymers [i](#)

There are no such residues in this entry.

5.8 Polymer linkage issues [i](#)

There are no chain breaks in this entry.

6 Fit of model and data [i](#)

6.1 Protein, DNA and RNA chains [i](#)

In the following table, the column labelled ‘#RSRZ> 2’ contains the number (and percentage) of RSRZ outliers, followed by percent RSRZ outliers for the chain as percentile scores relative to all X-ray entries and entries of similar resolution. The OWAB column contains the minimum, median, 95th percentile and maximum values of the occupancy-weighted average B-factor per residue. The column labelled ‘Q< 0.9’ lists the number of (and percentage) of residues with an average occupancy less than 0.9.

Mol	Chain	Analysed	<RSRZ>	#RSRZ>2	OWAB(Å ²)	Q<0.9
1	A	316/344 (91%)	-1.38	0 100 100	24, 48, 77, 98	0
1	B	316/344 (91%)	-1.40	0 100 100	28, 48, 72, 91	0
All	All	632/688 (91%)	-1.39	0 100 100	24, 48, 75, 98	0

There are no RSRZ outliers to report.

6.2 Non-standard residues in protein, DNA, RNA chains [i](#)

There are no non-standard protein/DNA/RNA residues in this entry.

6.3 Carbohydrates [i](#)

There are no monosaccharides in this entry.

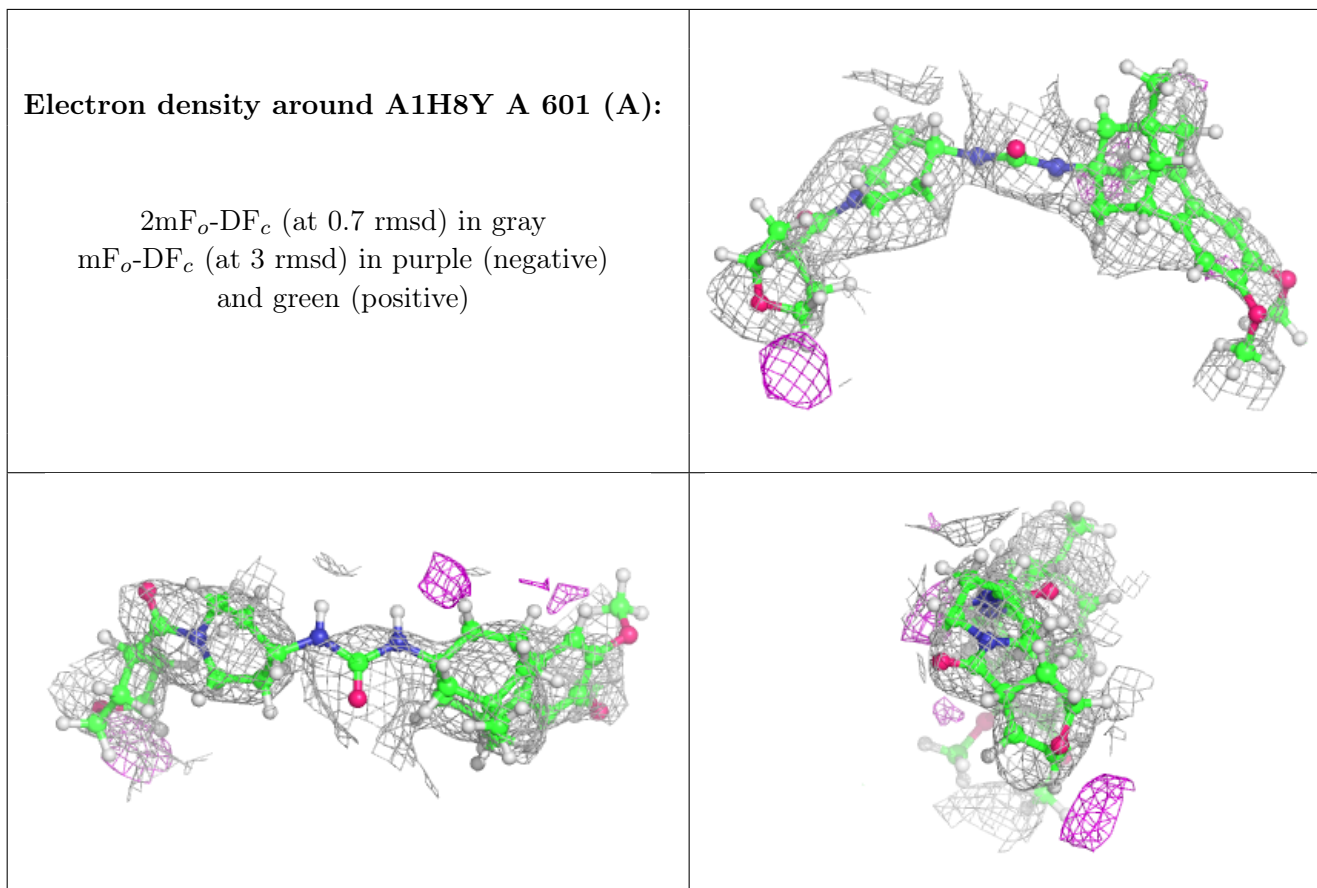
6.4 Ligands [i](#)

In the following table, the Atoms column lists the number of modelled atoms in the group and the number defined in the chemical component dictionary. The B-factors column lists the minimum, median, 95th percentile and maximum values of B factors of atoms in the group. The column labelled ‘Q< 0.9’ lists the number of atoms with occupancy less than 0.9.

Mol	Type	Chain	Res	Atoms	RSCC	RSR	B-factors(Å ²)	Q<0.9
2	A1H8Y	A	601[A]	38/38	0.98	0.08	28,57,71,78	81
2	A1H8Y	A	601[B]	38/38	0.98	0.08	38,57,71,77	81
2	A1H8Y	A	601[C]	38/38	0.98	0.08	40,57,71,77	81
2	A1H8Y	B	601[A]	38/38	0.99	0.06	37,57,76,77	81
2	A1H8Y	B	601[C]	38/38	0.99	0.06	44,57,77,77	81

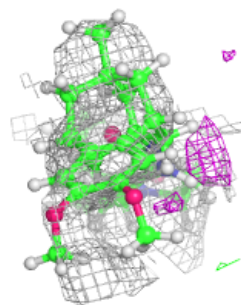
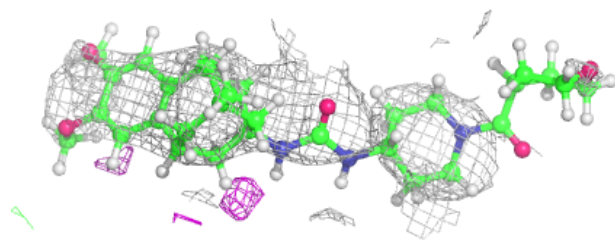
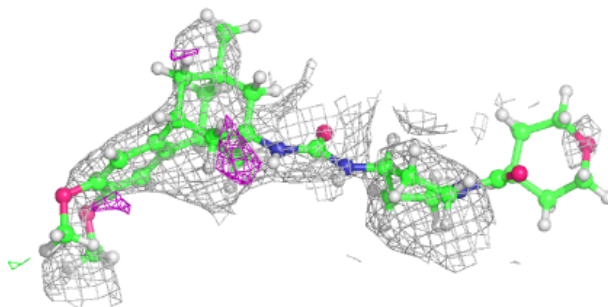
The following is a graphical depiction of the model fit to experimental electron density of all

instances of the Ligand of Interest. In addition, ligands with molecular weight > 250 and outliers as shown on the geometry validation Tables will also be included. Each fit is shown from different orientation to approximate a three-dimensional view.

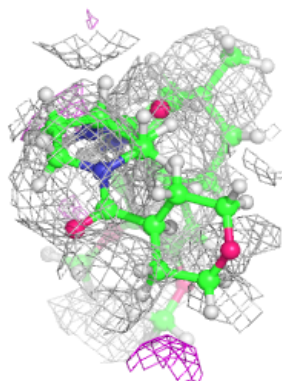
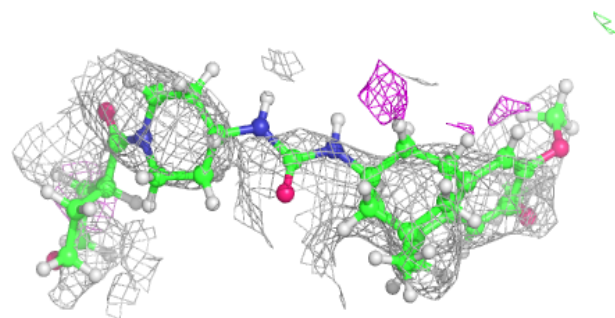
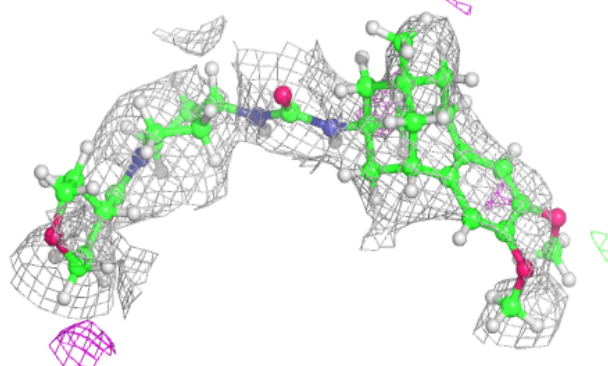


Electron density around A1H8Y A 601 (B):

$2mF_o-DF_c$ (at 0.7 rmsd) in gray
 mF_o-DF_c (at 3 rmsd) in purple (negative)
and green (positive)

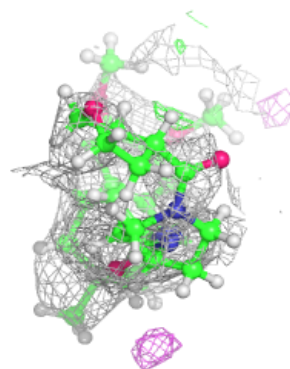
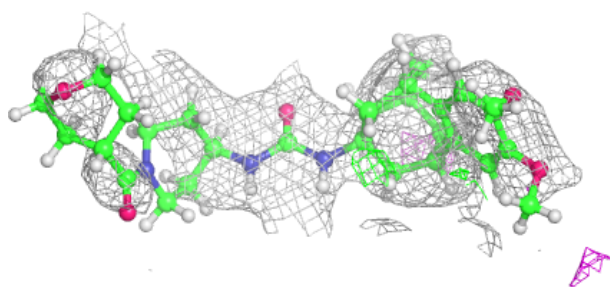
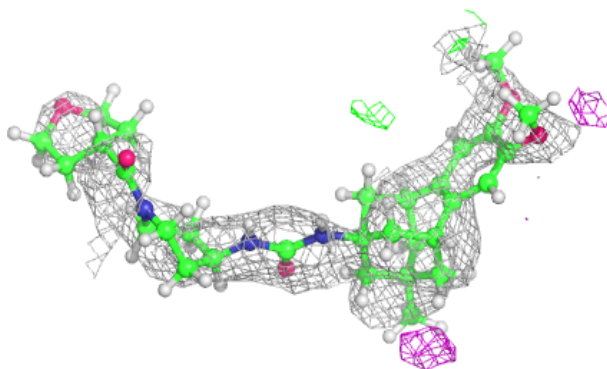
**Electron density around A1H8Y A 601 (C):**

$2mF_o-DF_c$ (at 0.7 rmsd) in gray
 mF_o-DF_c (at 3 rmsd) in purple (negative)
and green (positive)

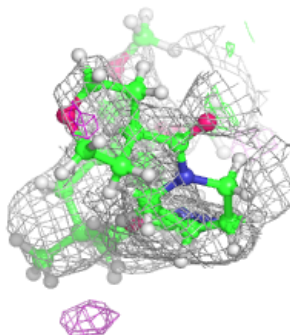
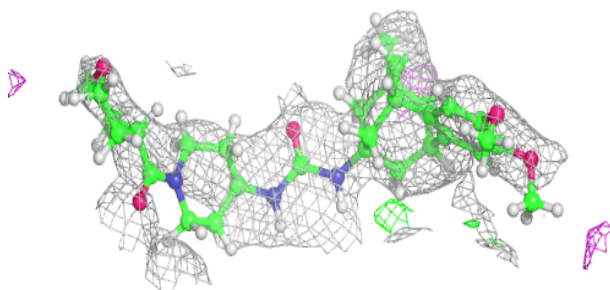
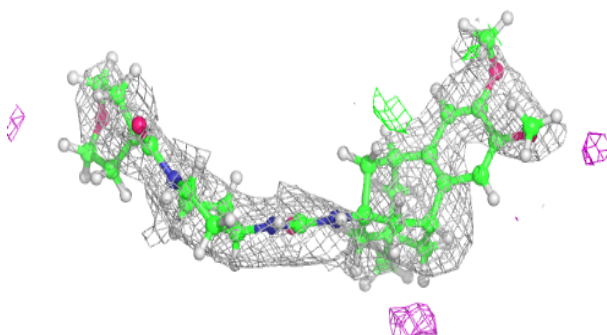


Electron density around A1H8Y B 601 (A):

$2mF_o-DF_c$ (at 0.7 rmsd) in gray
 mF_o-DF_c (at 3 rmsd) in purple (negative)
and green (positive)

**Electron density around A1H8Y B 601 (C):**

$2mF_o-DF_c$ (at 0.7 rmsd) in gray
 mF_o-DF_c (at 3 rmsd) in purple (negative)
and green (positive)



6.5 Other polymers [i](#)

There are no such residues in this entry.