



# Full wwPDB X-ray Structure Validation Report ⓘ

Jun 23, 2024 – 01:09 AM EDT

PDB ID : 6F88  
Title : Crystal structure of cytochrome P450 CYP260A1 (S276N) bound with progesterone  
Authors : Jozwik, I.K.; Thunnissen, A.M.W.H.  
Deposited on : 2017-12-12  
Resolution : 1.75 Å(reported)

This is a Full wwPDB X-ray Structure Validation Report for a publicly released PDB entry.

We welcome your comments at [validation@mail.wwpdb.org](mailto:validation@mail.wwpdb.org)

A user guide is available at

<https://www.wwpdb.org/validation/2017/XrayValidationReportHelp>

with specific help available everywhere you see the ⓘ symbol.

The types of validation reports are described at

<http://www.wwpdb.org/validation/2017/FAQs#types>.

---

The following versions of software and data (see [references ⓘ](#)) were used in the production of this report:

MolProbity : 4.02b-467  
Mogul : 2022.3.0, CSD as543be (2022)  
Xtriage (Phenix) : 1.20.1  
EDS : 2.37.1  
buster-report : 1.1.7 (2018)  
Percentile statistics : 20191225.v01 (using entries in the PDB archive December 25th 2019)  
Refmac : 5.8.0158  
CCP4 : 7.0.044 (Gargrove)  
Ideal geometry (proteins) : Engh & Huber (2001)  
Ideal geometry (DNA, RNA) : Parkinson et al. (1996)  
Validation Pipeline (wwPDB-VP) : 2.37.1

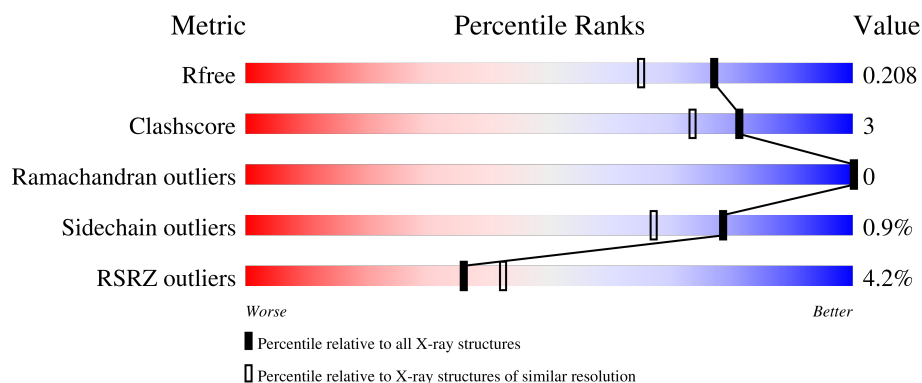
# 1 Overall quality at a glance

The following experimental techniques were used to determine the structure:

*X-RAY DIFFRACTION*

The reported resolution of this entry is 1.75 Å.

Percentile scores (ranging between 0-100) for global validation metrics of the entry are shown in the following graphic. The table shows the number of entries on which the scores are based.



Metric	Whole archive (#Entries)	Similar resolution (#Entries, resolution range(Å))
$R_{free}$	130704	2340 (1.76-1.76)
Clashscore	141614	2466 (1.76-1.76)
Ramachandran outliers	138981	2437 (1.76-1.76)
Sidechain outliers	138945	2437 (1.76-1.76)
RSRZ outliers	127900	2298 (1.76-1.76)

The table below summarises the geometric issues observed across the polymeric chains and their fit to the electron density. The red, orange, yellow and green segments of the lower bar indicate the fraction of residues that contain outliers for  $\geq 3$ , 2, 1 and 0 types of geometric quality criteria respectively. A grey segment represents the fraction of residues that are not modelled. The numeric value for each fraction is indicated below the corresponding segment, with a dot representing fractions  $\leq 5\%$ . The upper red bar (where present) indicates the fraction of residues that have poor fit to the electron density. The numeric value is given above the bar.

Mol	Chain	Length	Quality of chain
1	A	400	<div> <div>2%</div> <div>92%</div> <div>6%</div> <div>•</div> </div>
1	B	400	<div> <div>6%</div> <div>92%</div> <div>6%</div> <div>••</div> </div>

## 2 Entry composition

There are 4 unique types of molecules in this entry. The entry contains 7009 atoms, of which 0 are hydrogens and 0 are deuteriums.

In the tables below, the ZeroOcc column contains the number of atoms modelled with zero occupancy, the AltConf column contains the number of residues with at least one atom in alternate conformation and the Trace column contains the number of residues modelled with at most 2 atoms.

- Molecule 1 is a protein called Cytochrome P450 CYP260A1.

Mol	Chain	Residues	Atoms					ZeroOcc	AltConf	Trace
1	A	394	Total	C	N	O	S	0	2	0
			3089	1951	559	562	17			
1	B	393	Total	C	N	O	S	0	2	0
			3069	1940	550	561	18			

There are 14 discrepancies between the modelled and reference sequences:

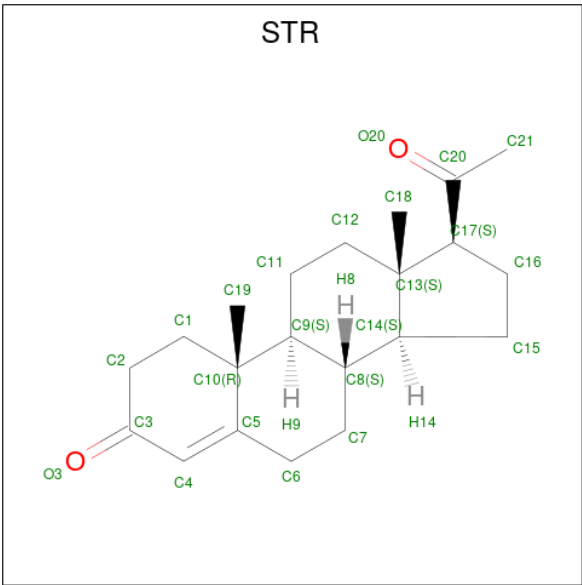
Chain	Residue	Modelled	Actual	Comment	Reference
A	276	ASN	SER	engineered mutation	UNP A9FDB7
A	395	HIS	-	expression tag	UNP A9FDB7
A	396	HIS	-	expression tag	UNP A9FDB7
A	397	HIS	-	expression tag	UNP A9FDB7
A	398	HIS	-	expression tag	UNP A9FDB7
A	399	HIS	-	expression tag	UNP A9FDB7
A	400	HIS	-	expression tag	UNP A9FDB7
B	276	ASN	SER	engineered mutation	UNP A9FDB7
B	395	HIS	-	expression tag	UNP A9FDB7
B	396	HIS	-	expression tag	UNP A9FDB7
B	397	HIS	-	expression tag	UNP A9FDB7
B	398	HIS	-	expression tag	UNP A9FDB7
B	399	HIS	-	expression tag	UNP A9FDB7
B	400	HIS	-	expression tag	UNP A9FDB7

- Molecule 2 is PROTOPORPHYRIN IX CONTAINING FE (three-letter code: HEM) (formula:  $C_{34}H_{32}FeN_4O_4$ ).



Mol	Chain	Residues	Atoms					ZeroOcc	AltConf
2	A	1	Total	C	Fe	N	O	0	0
			43	34	1	4	4		
2	B	1	Total	C	Fe	N	O	0	1
			86	68	2	8	8		

- Molecule 3 is PROGESTERONE (three-letter code: STR) (formula: C<sub>21</sub>H<sub>30</sub>O<sub>2</sub>).



Mol	Chain	Residues	Atoms			ZeroOcc	AltConf
3	A	1	Total	C	O	0	0
			23	21	2		
3	B	1	Total	C	O	0	0
			23	21	2		

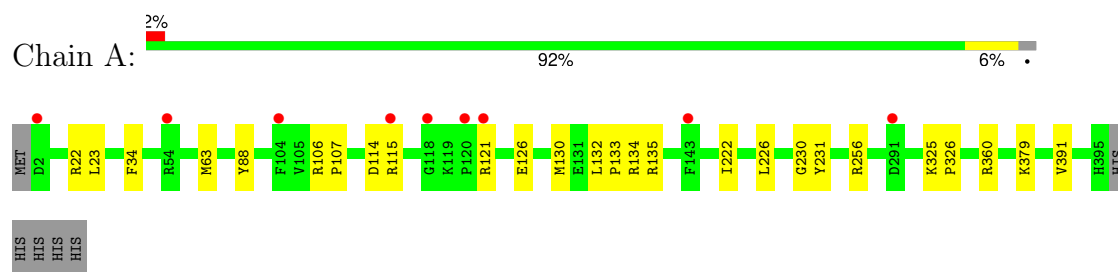
- Molecule 4 is water.

Mol	Chain	Residues	Atoms		ZeroOcc	AltConf
4	A	385	Total 385	O 385	0	0
4	B	291	Total 291	O 291	0	0

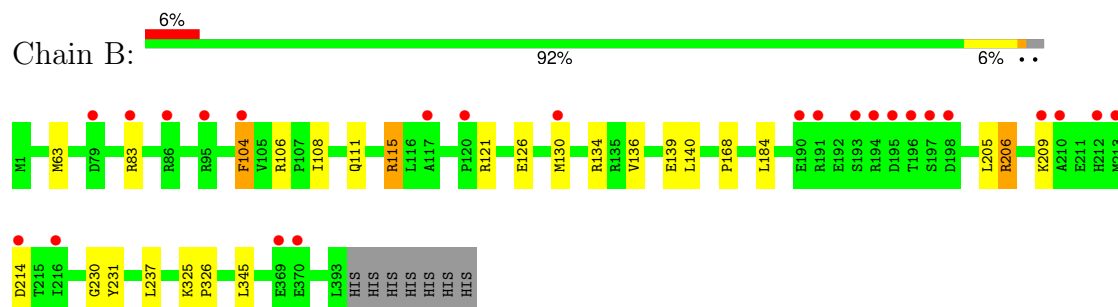
### 3 Residue-property plots [i](#)

These plots are drawn for all protein, RNA, DNA and oligosaccharide chains in the entry. The first graphic for a chain summarises the proportions of the various outlier classes displayed in the second graphic. The second graphic shows the sequence view annotated by issues in geometry and electron density. Residues are color-coded according to the number of geometric quality criteria for which they contain at least one outlier: green = 0, yellow = 1, orange = 2 and red = 3 or more. A red dot above a residue indicates a poor fit to the electron density ( $RSRZ > 2$ ). Stretches of 2 or more consecutive residues without any outlier are shown as a green connector. Residues present in the sample, but not in the model, are shown in grey.

#### • Molecule 1: Cytochrome P450 CYP260A1



#### • Molecule 1: Cytochrome P450 CYP260A1



## 4 Data and refinement statistics

Property	Value	Source
Space group	C 1 2 1	Depositor
Cell constants a, b, c, $\alpha$ , $\beta$ , $\gamma$	100.89Å 65.82Å 128.96Å 90.00° 112.84° 90.00°	Depositor
Resolution (Å)	46.49 – 1.75 46.49 – 1.75	Depositor EDS
% Data completeness (in resolution range)	99.5 (46.49-1.75) 99.5 (46.49-1.75)	Depositor EDS
$R_{merge}$	0.04	Depositor
$R_{sym}$	(Not available)	Depositor
$\langle I/\sigma(I) \rangle$ <sup>1</sup>	3.71 (at 1.75Å)	Xtriage
Refinement program	PHENIX	Depositor
R, $R_{free}$	0.167 , 0.204 0.175 , 0.208	Depositor DCC
$R_{free}$ test set	3859 reflections (4.93%)	wwPDB-VP
Wilson B-factor (Å <sup>2</sup> )	21.2	Xtriage
Anisotropy	0.310	Xtriage
Bulk solvent $k_{sol}$ (e/Å <sup>3</sup> ), $B_{sol}$ (Å <sup>2</sup> )	0.33 , 42.4	EDS
L-test for twinning <sup>2</sup>	$\langle  L  \rangle = 0.49$ , $\langle L^2 \rangle = 0.32$	Xtriage
Estimated twinning fraction	0.014 for h,-k,-h-l	Xtriage
$F_o, F_c$ correlation	0.96	EDS
Total number of atoms	7009	wwPDB-VP
Average B, all atoms (Å <sup>2</sup> )	26.0	wwPDB-VP

Xtriage's analysis on translational NCS is as follows: *The largest off-origin peak in the Patterson function is 4.72% of the height of the origin peak. No significant pseudotranslation is detected.*

<sup>1</sup>Intensities estimated from amplitudes.

<sup>2</sup>Theoretical values of  $\langle |L| \rangle$ ,  $\langle L^2 \rangle$  for acentric reflections are 0.5, 0.333 respectively for untwinned datasets, and 0.375, 0.2 for perfectly twinned datasets.

## 5 Model quality

### 5.1 Standard geometry

Bond lengths and bond angles in the following residue types are not validated in this section: HEM, STR

The Z score for a bond length (or angle) is the number of standard deviations the observed value is removed from the expected value. A bond length (or angle) with  $|Z| > 5$  is considered an outlier worth inspection. RMSZ is the root-mean-square of all Z scores of the bond lengths (or angles).

Mol	Chain	Bond lengths		Bond angles	
		RMSZ	# Z  >5	RMSZ	# Z  >5
1	A	0.58	0/3155	0.74	5/4277 (0.1%)
1	B	0.59	0/3136	0.76	5/4251 (0.1%)
All	All	0.59	0/6291	0.75	10/8528 (0.1%)

Chiral center outliers are detected by calculating the chiral volume of a chiral center and verifying if the center is modelled as a planar moiety or with the opposite hand. A planarity outlier is detected by checking planarity of atoms in a peptide group, atoms in a mainchain group or atoms of a sidechain that are expected to be planar.

Mol	Chain	#Chirality outliers	#Planarity outliers
1	B	0	1

There are no bond length outliers.

All (10) bond angle outliers are listed below:

Mol	Chain	Res	Type	Atoms	Z	Observed(°)	Ideal(°)
1	B	206	ARG	O-C-N	-13.13	101.69	122.70
1	B	206	ARG	CA-C-N	7.85	134.47	117.20
1	A	115	ARG	NE-CZ-NH1	7.33	123.97	120.30
1	B	115	ARG	NE-CZ-NH2	-7.21	116.70	120.30
1	A	115	ARG	NE-CZ-NH2	-6.81	116.89	120.30
1	A	22	ARG	NE-CZ-NH1	6.55	123.58	120.30
1	A	22	ARG	NE-CZ-NH2	-5.43	117.58	120.30
1	A	135	ARG	CG-CD-NE	5.43	123.20	111.80
1	B	205	LEU	C-N-CA	-5.11	108.93	121.70
1	B	206	ARG	C-N-CA	5.00	134.21	121.70

There are no chirality outliers.

All (1) planarity outliers are listed below:



Mol	Chain	Res	Type	Group
1	B	206	ARG	Mainchain

## 5.2 Too-close contacts

In the following table, the Non-H and H(model) columns list the number of non-hydrogen atoms and hydrogen atoms in the chain respectively. The H(added) column lists the number of hydrogen atoms added and optimized by MolProbity. The Clashes column lists the number of clashes within the asymmetric unit, whereas Symm-Clashes lists symmetry-related clashes.

Mol	Chain	Non-H	H(model)	H(added)	Clashes	Symm-Clashes
1	A	3089	0	3083	16	0
1	B	3069	0	3073	15	0
2	A	43	0	30	4	0
2	B	86	0	60	5	0
3	A	23	0	22	0	0
3	B	23	0	22	0	0
4	A	385	0	0	2	1
4	B	291	0	0	1	0
All	All	7009	0	6290	33	1

The all-atom clashscore is defined as the number of clashes found per 1000 atoms (including hydrogen atoms). The all-atom clashscore for this structure is 3.

All (33) close contacts within the same asymmetric unit are listed below, sorted by their clash magnitude.

Atom-1	Atom-2	Interatomic distance (Å)	Clash overlap (Å)
1:A:256[B]:ARG:NH1	4:A:601:HOH:O	1.97	0.95
1:B:209:LYS:HA	1:B:214:ASP:HB2	1.81	0.62
1:B:111:GLN:O	1:B:115:ARG:HG2	1.99	0.61
1:A:114:ASP:OD1	1:A:360:ARG:NH1	2.38	0.53
1:A:230:GLY:HA2	2:A:501:HEM:HMC2	1.90	0.52
1:B:104:PHE:CD1	1:B:104:PHE:N	2.79	0.51
1:B:126:GLU:CD	1:B:130[B]:MET:SD	2.91	0.49
1:A:130[B]:MET:CE	1:A:379:LYS:HE2	2.42	0.49
1:B:136:VAL:O	1:B:140:LEU:HD13	2.12	0.48
1:A:226:LEU:HD23	2:A:501:HEM:HBC1	1.95	0.48
1:A:126:GLU:CD	1:A:130[B]:MET:SD	2.93	0.47
1:A:132:LEU:HB3	1:A:133:PRO:HD3	1.96	0.46
1:A:130[B]:MET:HE1	1:A:379:LYS:HE2	1.97	0.46
1:A:106:ARG:HB3	1:A:107:PRO:HD3	1.98	0.45
1:B:134:ARG:HB2	1:B:231:TYR:CE1	2.51	0.45

*Continued on next page...*

Continued from previous page...

Atom-1	Atom-2	Interatomic distance (Å)	Clash overlap (Å)
1:B:184:LEU:C	1:B:184:LEU:HD23	2.37	0.45
1:A:230:GLY:HA2	2:A:501:HEM:CMC	2.46	0.45
1:B:345:LEU:HD23	2:B:501[B]:HEM:CBB	2.48	0.44
2:A:501:HEM:HMC2	2:A:501:HEM:HBC2	2.00	0.44
1:A:256[B]:ARG:NH2	4:A:617:HOH:O	2.51	0.44
1:A:121:ARG:HB2	1:A:391:VAL:O	2.17	0.44
1:A:134:ARG:HB2	1:A:231:TYR:CE1	2.52	0.44
1:B:126:GLU:OE2	1:B:130[B]:MET:SD	2.77	0.43
1:A:88:TYR:OH	1:A:222:ILE:HD13	2.17	0.43
1:A:34:PHE:CZ	1:B:168:PRO:HD2	2.53	0.43
1:A:325:LYS:HA	1:A:326:PRO:C	2.39	0.42
1:B:237:LEU:HB2	2:B:501[A]:HEM:HBB1	2.02	0.42
2:B:501[A]:HEM:HMB2	2:B:501[A]:HEM:HBB2	2.01	0.42
2:B:501[B]:HEM:HMC1	2:B:501[B]:HEM:HBC2	2.02	0.42
1:B:108:ILE:HD11	1:B:139:GLU:HG3	2.02	0.41
1:B:325:LYS:HA	1:B:326:PRO:C	2.40	0.41
1:B:230:GLY:HA2	2:B:501[B]:HEM:CAB	2.50	0.41
1:B:83:ARG:NH1	4:B:614:HOH:O	2.54	0.40

All (1) symmetry-related close contacts are listed below. The label for Atom-2 includes the symmetry operator and encoded unit-cell translations to be applied.

Atom-1	Atom-2	Interatomic distance (Å)	Clash overlap (Å)
4:A:887:HOH:O	4:A:894:HOH:O[4_758]	2.16	0.04

## 5.3 Torsion angles ⓘ

### 5.3.1 Protein backbone ⓘ

In the following table, the Percentiles column shows the percent Ramachandran outliers of the chain as a percentile score with respect to all X-ray entries followed by that with respect to entries of similar resolution.

The Analysed column shows the number of residues for which the backbone conformation was analysed, and the total number of residues.

Mol	Chain	Analysed	Favoured	Allowed	Outliers	Percentiles	
1	A	394/400 (98%)	387 (98%)	7 (2%)	0	100	100
1	B	393/400 (98%)	383 (98%)	10 (2%)	0	100	100

Continued on next page...

*Continued from previous page...*

Mol	Chain	Analysed	Favoured	Allowed	Outliers	Percentiles	
All	All	787/800 (98%)	770 (98%)	17 (2%)	0	100	100

There are no Ramachandran outliers to report.

### 5.3.2 Protein sidechains ⓘ

In the following table, the Percentiles column shows the percent sidechain outliers of the chain as a percentile score with respect to all X-ray entries followed by that with respect to entries of similar resolution.

The Analysed column shows the number of residues for which the sidechain conformation was analysed, and the total number of residues.

Mol	Chain	Analysed	Rotameric	Outliers	Percentiles	
1	A	321/325 (99%)	319 (99%)	2 (1%)	86	79
1	B	320/325 (98%)	316 (99%)	4 (1%)	69	54
All	All	641/650 (99%)	635 (99%)	6 (1%)	78	67

All (6) residues with a non-rotameric sidechain are listed below:

Mol	Chain	Res	Type
1	A	23	LEU
1	A	63	MET
1	B	63	MET
1	B	104	PHE
1	B	106	ARG
1	B	121	ARG

Sometimes sidechains can be flipped to improve hydrogen bonding and reduce clashes. There are no such sidechains identified.

### 5.3.3 RNA ⓘ

There are no RNA molecules in this entry.

## 5.4 Non-standard residues in protein, DNA, RNA chains ⓘ

There are no non-standard protein/DNA/RNA residues in this entry.

## 5.5 Carbohydrates [i](#)

There are no monosaccharides in this entry.

## 5.6 Ligand geometry [i](#)

5 ligands are modelled in this entry.

In the following table, the Counts columns list the number of bonds (or angles) for which Mogul statistics could be retrieved, the number of bonds (or angles) that are observed in the model and the number of bonds (or angles) that are defined in the Chemical Component Dictionary. The Link column lists molecule types, if any, to which the group is linked. The Z score for a bond length (or angle) is the number of standard deviations the observed value is removed from the expected value. A bond length (or angle) with  $|Z| > 2$  is considered an outlier worth inspection. RMSZ is the root-mean-square of all Z scores of the bond lengths (or angles).

Mol	Type	Chain	Res	Link	Bond lengths			Bond angles		
					Counts	RMSZ	# Z  > 2	Counts	RMSZ	# Z  > 2
2	HEM	A	501	1	42,50,50	1.60	7 (16%)	46,82,82	1.60	12 (26%)
2	HEM	B	501[B]	1	42,50,50	1.36	5 (11%)	46,82,82	1.30	6 (13%)
3	STR	A	502	-	26,26,26	7.54	17 (65%)	42,42,42	2.79	18 (42%)
2	HEM	B	501[A]	1	42,50,50	1.53	7 (16%)	46,82,82	1.36	5 (10%)
3	STR	B	502	-	26,26,26	7.65	15 (57%)	42,42,42	2.78	19 (45%)

In the following table, the Chirals column lists the number of chiral outliers, the number of chiral centers analysed, the number of these observed in the model and the number defined in the Chemical Component Dictionary. Similar counts are reported in the Torsion and Rings columns. '-' means no outliers of that kind were identified.

Mol	Type	Chain	Res	Link	Chirals	Torsions	Rings
2	HEM	A	501	1	-	1/12/54/54	-
2	HEM	B	501[B]	1	-	0/12/54/54	-
3	STR	A	502	-	-	4/4/62/62	0/4/4/4
2	HEM	B	501[A]	1	-	0/12/54/54	-
3	STR	B	502	-	-	3/4/62/62	0/4/4/4

All (51) bond length outliers are listed below:

Mol	Chain	Res	Type	Atoms	Z	Observed(Å)	Ideal(Å)
3	A	502	STR	C4-C5	17.68	1.59	1.34
3	B	502	STR	C7-C8	-17.51	1.22	1.53
3	B	502	STR	C4-C5	17.31	1.58	1.34
3	A	502	STR	C7-C8	-16.90	1.23	1.53

*Continued on next page...*

*Continued from previous page...*

Mol	Chain	Res	Type	Atoms	Z	Observed(Å)	Ideal(Å)
3	A	502	STR	C12-C11	-13.93	1.25	1.53
3	B	502	STR	C12-C11	-13.47	1.26	1.53
3	B	502	STR	C12-C13	-12.39	1.32	1.54
3	A	502	STR	C12-C13	-12.25	1.32	1.54
3	B	502	STR	C17-C20	-11.26	1.35	1.51
3	A	502	STR	C10-C5	-10.93	1.32	1.52
3	B	502	STR	C10-C5	-10.92	1.32	1.52
3	A	502	STR	C17-C20	-9.58	1.38	1.51
3	B	502	STR	C13-C17	9.39	1.71	1.56
3	A	502	STR	C13-C17	8.52	1.69	1.56
3	B	502	STR	C6-C5	-7.91	1.37	1.50
3	A	502	STR	C6-C5	-7.07	1.38	1.50
3	A	502	STR	C15-C14	6.85	1.68	1.54
3	B	502	STR	C15-C14	6.79	1.68	1.54
3	B	502	STR	C7-C6	6.54	1.67	1.53
3	A	502	STR	C7-C6	5.97	1.65	1.53
3	B	502	STR	C13-C14	5.29	1.64	1.55
3	B	502	STR	C1-C10	4.86	1.63	1.54
3	A	502	STR	C13-C14	4.67	1.63	1.55
3	A	502	STR	C1-C10	4.59	1.62	1.54
2	B	501[A]	HEM	C3C-C2C	-4.55	1.34	1.40
3	A	502	STR	O3-C3	-4.01	1.16	1.23
2	A	501	HEM	C3C-C2C	-3.99	1.35	1.40
3	A	502	STR	C16-C17	3.82	1.64	1.54
2	A	501	HEM	C3C-CAC	3.56	1.55	1.47
3	A	502	STR	C11-C9	3.54	1.59	1.53
2	B	501[B]	HEM	C3C-C2C	-3.43	1.35	1.40
3	A	502	STR	C10-C9	3.24	1.61	1.56
3	B	502	STR	O3-C3	-3.23	1.18	1.23
2	B	501[A]	HEM	C3C-CAC	3.16	1.54	1.47
3	B	502	STR	C16-C17	3.09	1.62	1.54
2	B	501[B]	HEM	C3C-CAC	2.96	1.54	1.47
2	B	501[A]	HEM	C3C-C4C	2.91	1.45	1.41
3	A	502	STR	C19-C10	-2.58	1.50	1.54
2	B	501[A]	HEM	CAB-C3B	2.57	1.54	1.47
2	A	501	HEM	CAB-C3B	2.49	1.54	1.47
2	B	501[A]	HEM	CMD-C2D	2.40	1.55	1.50
2	B	501[B]	HEM	C3C-C4C	2.40	1.44	1.41
3	B	502	STR	C10-C9	2.36	1.59	1.56
2	A	501	HEM	C4D-ND	-2.27	1.36	1.40
2	B	501[B]	HEM	CAB-C3B	2.27	1.53	1.47
2	A	501	HEM	CMD-C2D	2.24	1.55	1.50

*Continued on next page...*

*Continued from previous page...*

Mol	Chain	Res	Type	Atoms	Z	Observed(Å)	Ideal(Å)
2	A	501	HEM	CMB-C2B	2.15	1.55	1.50
2	B	501[B]	HEM	CMB-C2B	2.11	1.55	1.50
2	B	501[A]	HEM	CAD-C3D	2.09	1.56	1.51
2	B	501[A]	HEM	CMB-C2B	2.09	1.55	1.50
2	A	501	HEM	C4A-NA	2.07	1.40	1.36

All (60) bond angle outliers are listed below:

Mol	Chain	Res	Type	Atoms	Z	Observed(°)	Ideal(°)
3	B	502	STR	C12-C13-C17	10.15	128.29	116.11
3	A	502	STR	C12-C13-C17	9.45	127.45	116.11
3	B	502	STR	C7-C8-C9	5.42	117.02	110.52
3	A	502	STR	C7-C8-C9	5.41	117.00	110.52
3	B	502	STR	C11-C12-C13	4.99	121.15	112.74
3	A	502	STR	C11-C12-C13	4.48	120.30	112.74
3	A	502	STR	C18-C13-C14	-4.45	103.61	111.68
3	B	502	STR	C12-C11-C9	4.31	120.46	113.14
3	A	502	STR	C7-C8-C14	4.20	119.05	112.08
3	B	502	STR	C7-C8-C14	4.10	118.89	112.08
2	B	501[A]	HEM	C4A-C3A-C2A	3.78	109.62	107.00
3	A	502	STR	C15-C16-C17	3.71	111.29	105.25
3	A	502	STR	C12-C13-C14	3.63	112.68	107.25
3	B	502	STR	C18-C13-C14	-3.63	105.10	111.68
3	A	502	STR	C18-C13-C17	-3.61	104.35	110.35
3	A	502	STR	C16-C17-C13	-3.40	101.17	104.21
2	A	501	HEM	C4D-ND-C1D	3.39	109.22	105.21
3	A	502	STR	C12-C11-C9	3.34	118.81	113.14
3	A	502	STR	C19-C10-C1	-3.29	104.42	109.43
2	A	501	HEM	C4B-CHC-C1C	3.25	126.85	122.56
3	B	502	STR	C17-C13-C14	-3.15	96.43	99.72
2	A	501	HEM	CHD-C1D-ND	3.00	127.67	124.44
3	B	502	STR	C9-C10-C5	2.97	114.00	109.65
2	B	501[B]	HEM	CHC-C4B-NB	2.94	127.60	124.44
3	A	502	STR	C5-C4-C3	-2.91	119.16	123.67
3	B	502	STR	O3-C3-C2	2.89	127.35	121.59
3	B	502	STR	C18-C13-C17	-2.88	105.57	110.35
2	A	501	HEM	C2C-C3C-C4C	2.84	108.88	106.90
3	B	502	STR	C15-C16-C17	2.76	109.74	105.25
3	A	502	STR	C9-C10-C5	2.70	113.60	109.65
3	B	502	STR	C13-C17-C20	-2.68	111.23	114.95
3	B	502	STR	C12-C13-C14	2.59	111.11	107.25
3	A	502	STR	C16-C17-C20	2.58	118.68	114.21

*Continued on next page...*

*Continued from previous page...*

Mol	Chain	Res	Type	Atoms	Z	Observed(°)	Ideal(°)
2	A	501	HEM	C2D-C1D-ND	-2.56	106.94	109.90
3	B	502	STR	C5-C4-C3	-2.53	119.75	123.67
2	B	501[A]	HEM	CMA-C3A-C4A	-2.53	124.75	128.46
2	A	501	HEM	CMC-C2C-C3C	2.53	129.73	124.68
2	B	501[A]	HEM	C1B-NB-C4B	2.52	108.20	105.21
2	B	501[A]	HEM	C4C-CHD-C1D	2.49	125.84	122.56
2	B	501[B]	HEM	CMA-C3A-C4A	-2.46	124.86	128.46
3	B	502	STR	O20-C20-C17	2.43	125.53	121.69
2	A	501	HEM	CBA-CAA-C2A	-2.40	108.50	112.54
2	B	501[B]	HEM	CMC-C2C-C3C	2.39	129.47	124.68
3	A	502	STR	C6-C5-C10	2.36	120.92	116.76
3	B	502	STR	C19-C10-C1	-2.34	105.88	109.43
3	A	502	STR	O20-C20-C17	2.33	125.38	121.69
2	A	501	HEM	CHB-C1B-NB	2.29	127.21	124.37
2	B	501[B]	HEM	C4C-CHD-C1D	2.25	125.53	122.56
2	A	501	HEM	C1B-NB-C4B	2.17	107.77	105.21
2	A	501	HEM	C4A-C3A-C2A	2.15	108.49	107.00
3	B	502	STR	C11-C9-C10	2.14	115.72	113.08
3	B	502	STR	O3-C3-C4	-2.14	117.80	121.65
2	A	501	HEM	O2A-CGA-CBA	2.13	120.73	114.00
3	B	502	STR	C16-C17-C13	-2.13	102.31	104.21
2	A	501	HEM	O1A-CGA-CBA	-2.10	116.44	123.09
3	A	502	STR	C11-C9-C10	2.09	115.67	113.08
2	B	501[A]	HEM	C2D-C1D-ND	-2.06	107.52	109.90
2	B	501[B]	HEM	CBA-CAA-C2A	-2.04	109.11	112.54
3	A	502	STR	C6-C5-C4	-2.02	117.63	120.86
2	B	501[B]	HEM	CHD-C1D-ND	2.02	126.60	124.44

There are no chirality outliers.

All (8) torsion outliers are listed below:

Mol	Chain	Res	Type	Atoms
3	A	502	STR	C16-C17-C20-C21
3	B	502	STR	C16-C17-C20-C21
3	A	502	STR	C16-C17-C20-O20
3	B	502	STR	C16-C17-C20-O20
3	A	502	STR	C13-C17-C20-O20
3	A	502	STR	C13-C17-C20-C21
3	B	502	STR	C13-C17-C20-O20
2	A	501	HEM	CAA-CBA-CGA-O2A

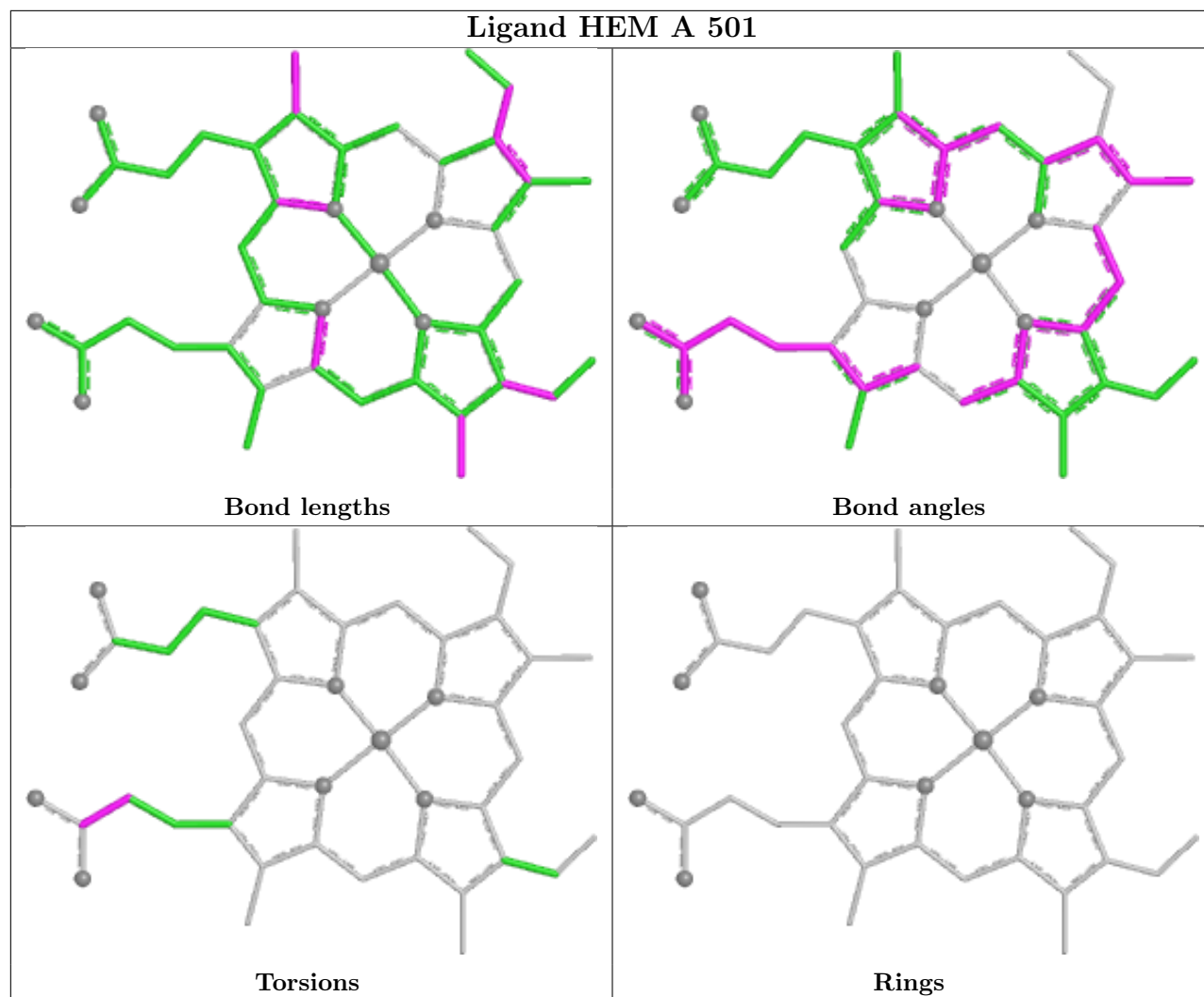
There are no ring outliers.

3 monomers are involved in 9 short contacts:

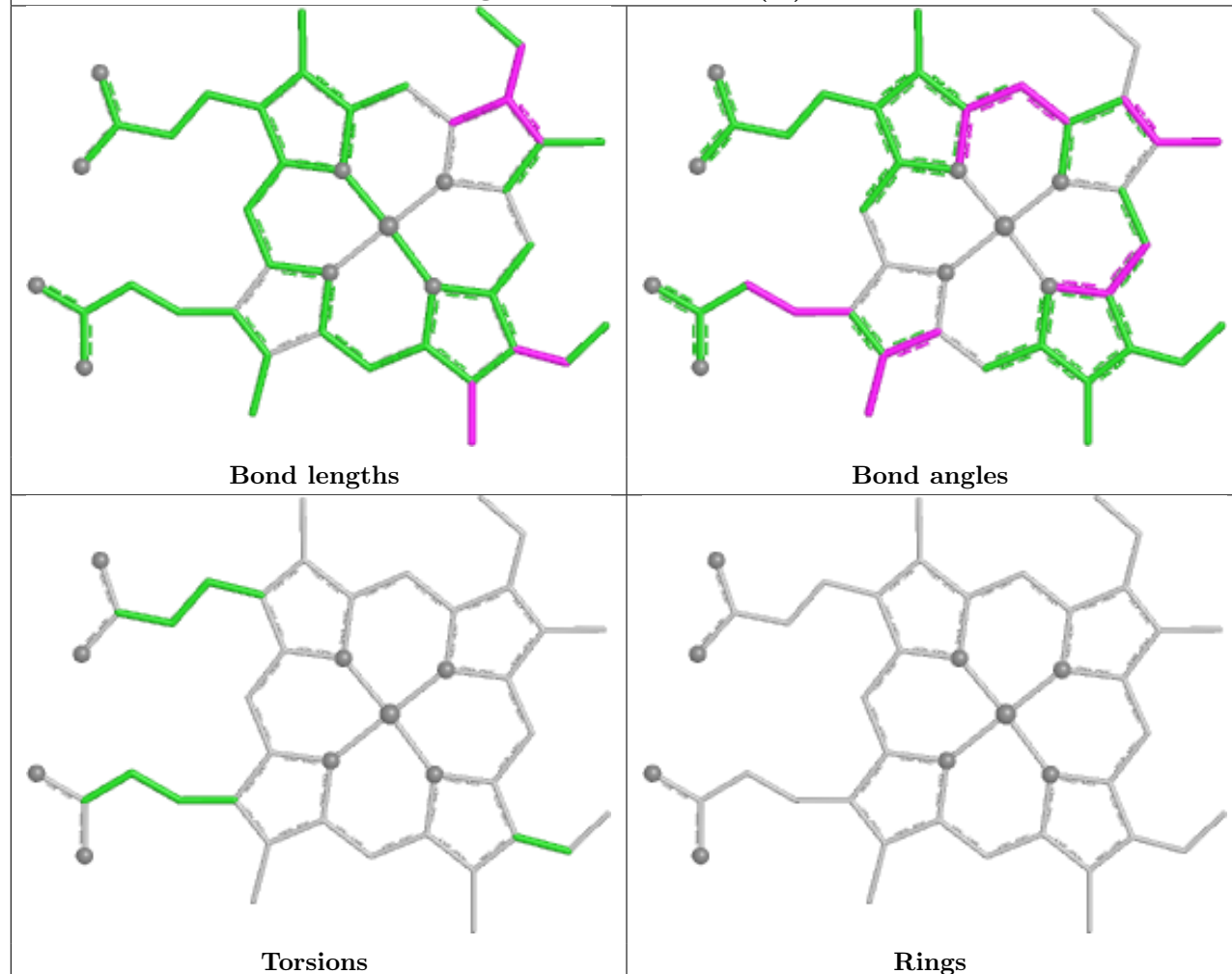
Mol	Chain	Res	Type	Clashes	Symm-Clashes
2	A	501	HEM	4	0
2	B	501[B]	HEM	3	0
2	B	501[A]	HEM	2	0

The following is a two-dimensional graphical depiction of Mogul quality analysis of bond lengths, bond angles, torsion angles, and ring geometry for all instances of the Ligand of Interest. In addition, ligands with molecular weight > 250 and outliers as shown on the validation Tables will also be included. For torsion angles, if less than 5% of the Mogul distribution of torsion angles is within 10 degrees of the torsion angle in question, then that torsion angle is considered an outlier. Any bond that is central to one or more torsion angles identified as an outlier by Mogul will be highlighted in the graph. For rings, the root-mean-square deviation (RMSD) between the ring in question and similar rings identified by Mogul is calculated over all ring torsion angles. If the average RMSD is greater than 60 degrees and the minimal RMSD between the ring in question and any Mogul-identified rings is also greater than 60 degrees, then that ring is considered an outlier. The outliers are highlighted in purple. The color gray indicates Mogul did not find sufficient equivalents in the CSD to analyse the geometry.

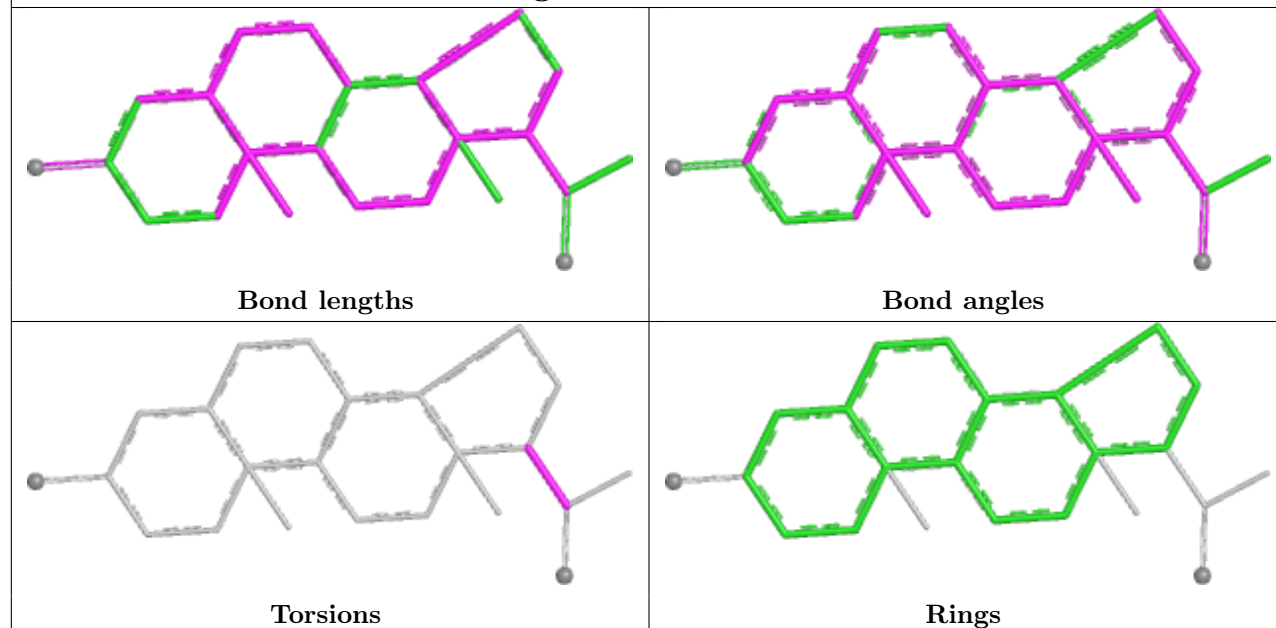


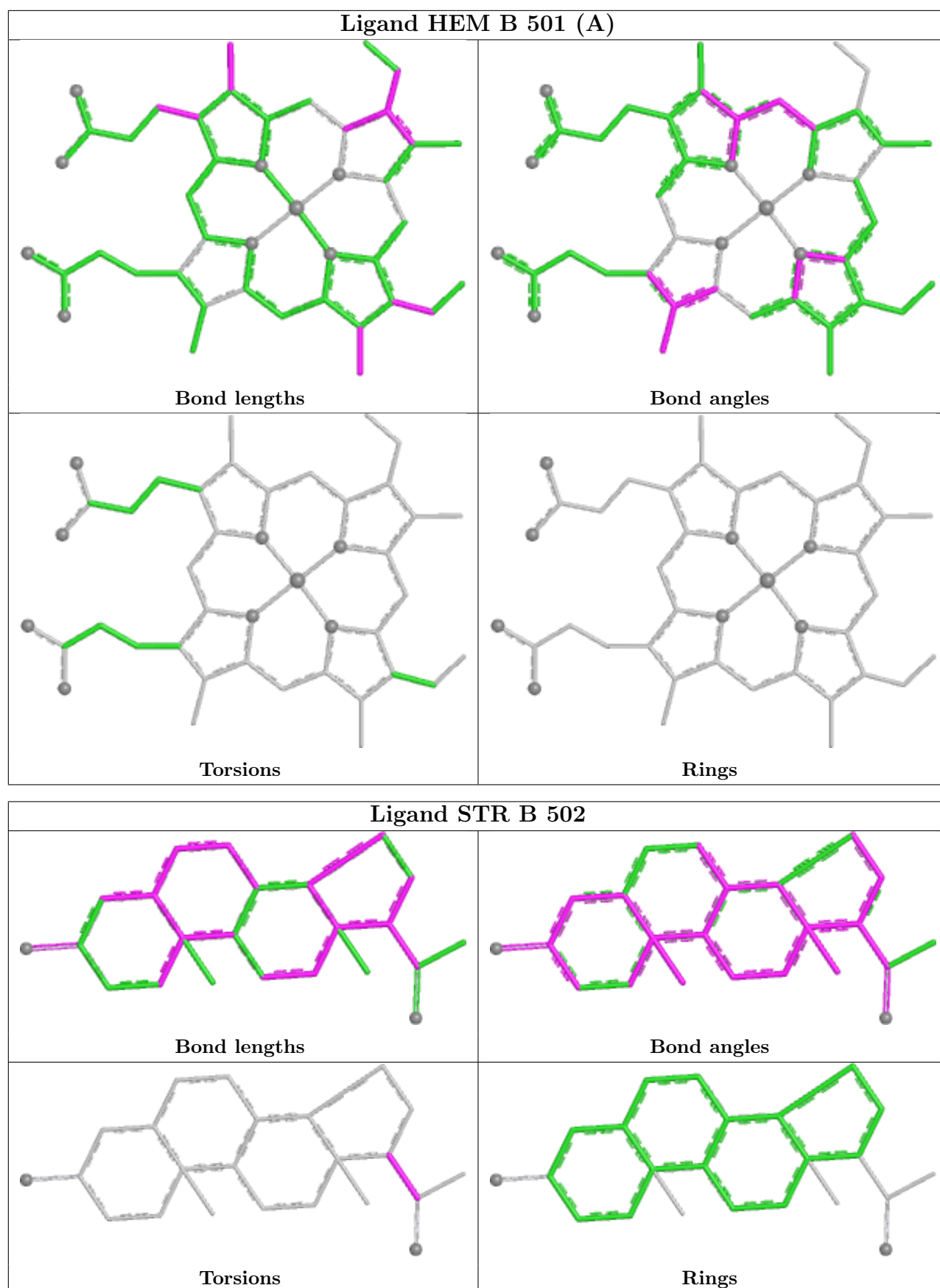


## Ligand HEM B 501 (B)



## Ligand STR A 502





## 5.7 Other polymers [i](#)

There are no such residues in this entry.

## 5.8 Polymer linkage issues [i](#)

There are no chain breaks in this entry.

## 6 Fit of model and data

### 6.1 Protein, DNA and RNA chains

In the following table, the column labelled ‘#RSRZ > 2’ contains the number (and percentage) of RSRZ outliers, followed by percent RSRZ outliers for the chain as percentile scores relative to all X-ray entries and entries of similar resolution. The OWAB column contains the minimum, median, 95<sup>th</sup> percentile and maximum values of the occupancy-weighted average B-factor per residue. The column labelled ‘Q < 0.9’ lists the number of (and percentage) of residues with an average occupancy less than 0.9.

Mol	Chain	Analysed	<RSRZ>	#RSRZ>2	OWAB(Å <sup>2</sup> )	Q<0.9
1	A	394/400 (98%)	-0.25	9 (2%) 60 67	13, 22, 38, 55	0
1	B	393/400 (98%)	0.09	24 (6%) 21 26	14, 25, 49, 71	0
All	All	787/800 (98%)	-0.08	33 (4%) 36 42	13, 23, 46, 71	0

All (33) RSRZ outliers are listed below:

Mol	Chain	Res	Type	RSRZ
1	A	118	GLY	4.8
1	B	196	THR	4.4
1	B	195	ASP	4.3
1	A	143	PHE	4.2
1	B	212	HIS	4.0
1	A	120	PRO	3.5
1	B	83	ARG	3.3
1	B	214	ASP	3.3
1	B	369	GLU	3.3
1	B	104	PHE	3.2
1	B	198	ASP	2.8
1	B	213	MET	2.8
1	B	209	LYS	2.7
1	B	95	ARG	2.7
1	A	2	ASP	2.7
1	B	191	ARG	2.6
1	B	86	ARG	2.5
1	B	120	PRO	2.5
1	B	197	SER	2.5
1	A	115	ARG	2.5
1	B	193	SER	2.4
1	B	216	ILE	2.3
1	B	194	ARG	2.3
1	A	291	ASP	2.2

*Continued on next page...*

*Continued from previous page...*

Mol	Chain	Res	Type	RSRZ
1	B	117	ALA	2.2
1	B	190	GLU	2.1
1	B	130[A]	MET	2.1
1	A	54	ARG	2.1
1	B	210	ALA	2.0
1	B	370	GLU	2.0
1	B	79	ASP	2.0
1	A	121	ARG	2.0
1	A	104	PHE	2.0

## 6.2 Non-standard residues in protein, DNA, RNA chains [i](#)

There are no non-standard protein/DNA/RNA residues in this entry.

## 6.3 Carbohydrates [i](#)

There are no monosaccharides in this entry.

## 6.4 Ligands [i](#)

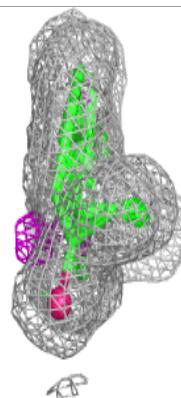
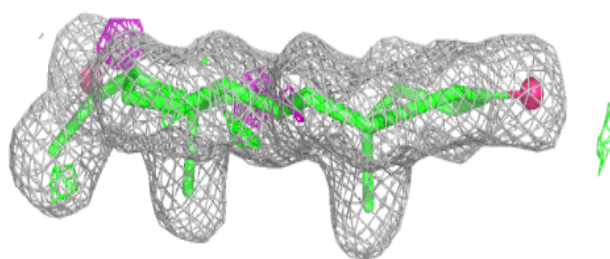
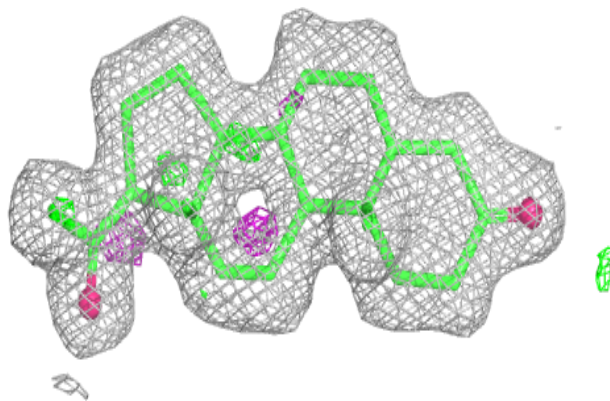
In the following table, the Atoms column lists the number of modelled atoms in the group and the number defined in the chemical component dictionary. The B-factors column lists the minimum, median, 95<sup>th</sup> percentile and maximum values of B factors of atoms in the group. The column labelled 'Q< 0.9' lists the number of atoms with occupancy less than 0.9.

Mol	Type	Chain	Res	Atoms	RSCC	RSR	B-factors( $\text{\AA}^2$ )	Q<0.9
3	STR	A	502	23/23	0.90	0.11	14,17,25,27	0
3	STR	B	502	23/23	0.93	0.12	14,16,23,27	0
2	HEM	B	501[B]	43/43	0.98	0.09	11,16,23,27	43
2	HEM	A	501	43/43	0.98	0.08	10,14,20,55	0
2	HEM	B	501[A]	43/43	0.98	0.09	11,16,23,27	43

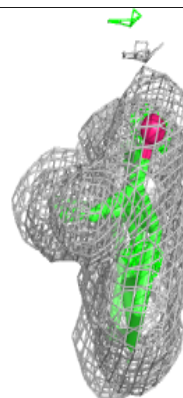
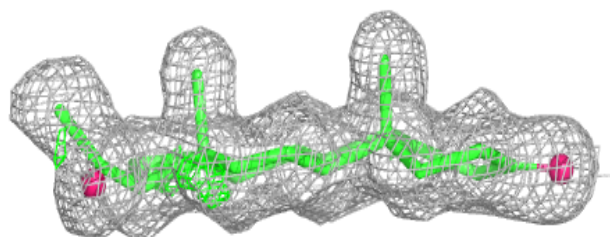
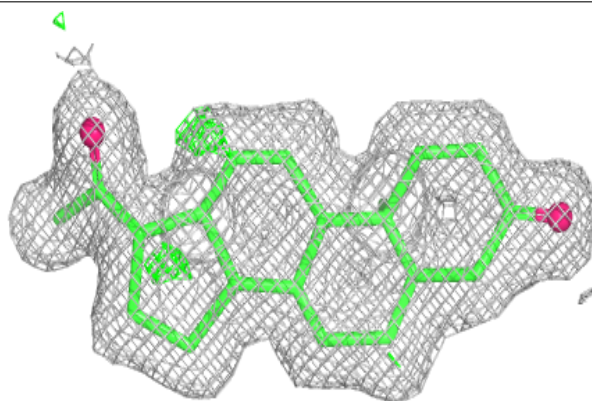
The following is a graphical depiction of the model fit to experimental electron density of all instances of the Ligand of Interest. In addition, ligands with molecular weight > 250 and outliers as shown on the geometry validation Tables will also be included. Each fit is shown from different orientation to approximate a three-dimensional view.

**Electron density around STR A 502:**

$2mF_o-DF_c$  (at 0.7 rmsd) in gray  
 $mF_o-DF_c$  (at 3 rmsd) in purple (negative)  
and green (positive)

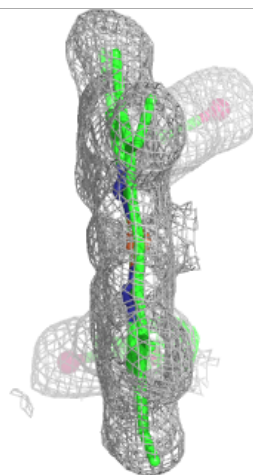
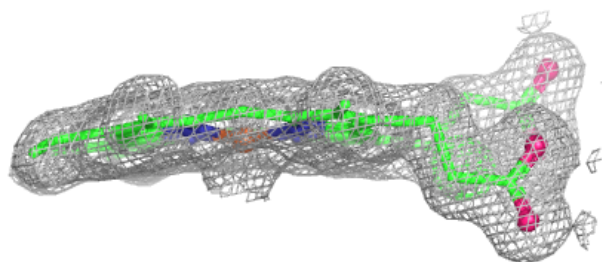
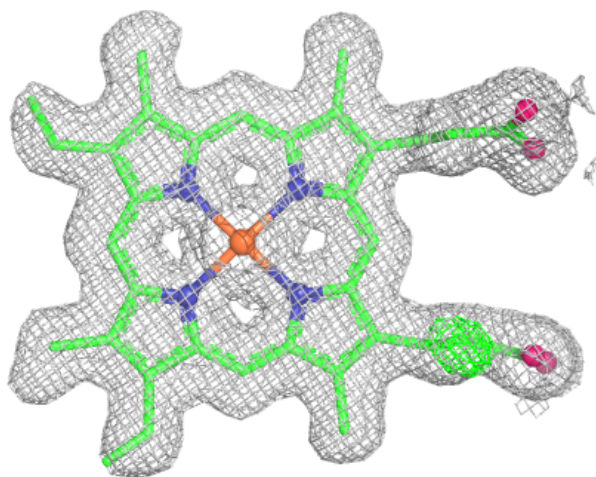
**Electron density around STR B 502:**

$2mF_o-DF_c$  (at 0.7 rmsd) in gray  
 $mF_o-DF_c$  (at 3 rmsd) in purple (negative)  
and green (positive)



**Electron density around HEM B 501 (B):**

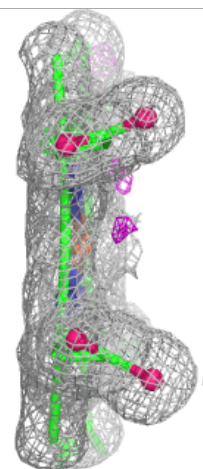
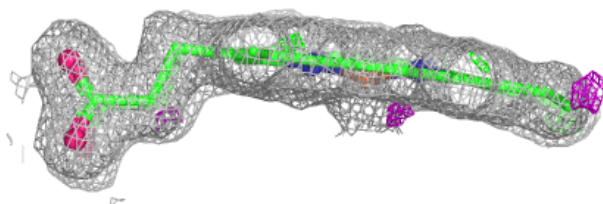
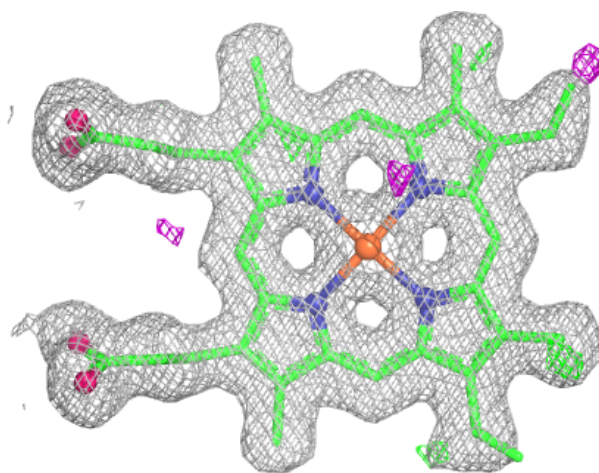
$2mF_o-DF_c$  (at 0.7 rmsd) in gray  
 $mF_o-DF_c$  (at 3 rmsd) in purple (negative)  
and green (positive)





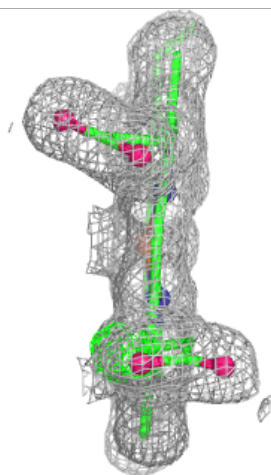
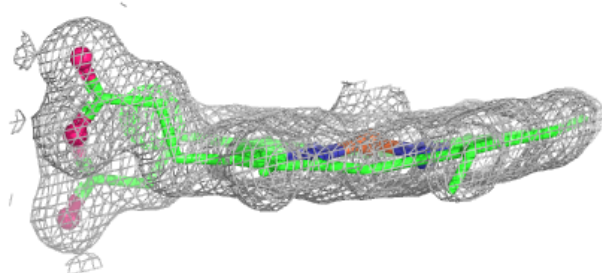
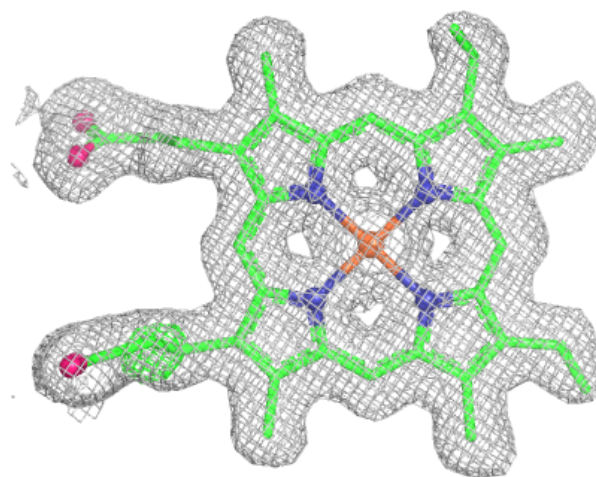
**Electron density around HEM A 501:**

$2mF_o-DF_c$  (at 0.7 rmsd) in gray  
 $mF_o-DF_c$  (at 3 rmsd) in purple (negative)  
and green (positive)



**Electron density around HEM B 501 (A):**

$2mF_o-DF_c$  (at 0.7 rmsd) in gray  
 $mF_o-DF_c$  (at 3 rmsd) in purple (negative)  
and green (positive)



## 6.5 Other polymers [i](#)

There are no such residues in this entry.