



wwPDB X-ray Structure Validation Summary Report ⓘ

Jun 11, 2024 – 11:42 PM EDT

PDB ID : 1FM6
Title : THE 2.1 ANGSTROM RESOLUTION CRYSTAL STRUCTURE OF THE HETERODIMER OF THE HUMAN RXRALPHA AND PPARGAMMA LIGAND BINDING DOMAINS RESPECTIVELY BOUND WITH 9-CIS RETINOIC ACID AND ROSIGLITAZONE AND CO-ACTIVATOR PEP-TIDES.
Authors : Gampe Jr., R.T.; Montana, V.G.; Lambert, M.H.; Miller, A.B.; Bledsoe, R.K.; Milburn, M.V.; Kliewer, S.A.; Willson, T.M.; Xu, H.E.
Deposited on : 2000-08-16
Resolution : 2.10 Å(reported)

This is a wwPDB X-ray Structure Validation Summary Report for a publicly released PDB entry.

We welcome your comments at validation@mail.wwpdb.org

A user guide is available at

<https://www.wwpdb.org/validation/2017/XrayValidationReportHelp>

with specific help available everywhere you see the ⓘ symbol.

The types of validation reports are described at

<http://www.wwpdb.org/validation/2017/FAQs#types>.

The following versions of software and data (see [references ⓘ](#)) were used in the production of this report:

MolProbity	:	4.02b-467
Mogul	:	2022.3.0, CSD as543be (2022)
Xtriage (Phenix)	:	1.20.1
EDS	:	2.36.2
buster-report	:	1.1.7 (2018)
Percentile statistics	:	20191225.v01 (using entries in the PDB archive December 25th 2019)
Refmac	:	5.8.0158
CCP4	:	7.0.044 (Gargrove)

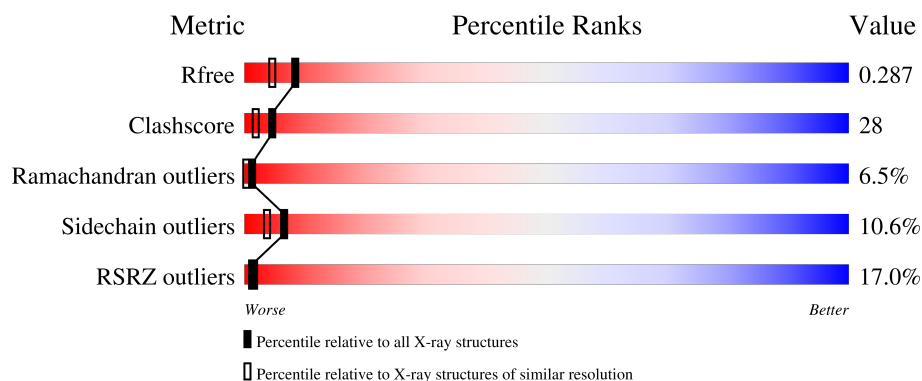
1 Overall quality at a glance

The following experimental techniques were used to determine the structure:

X-RAY DIFFRACTION

The reported resolution of this entry is 2.10 Å.

Percentile scores (ranging between 0-100) for global validation metrics of the entry are shown in the following graphic. The table shows the number of entries on which the scores are based.



Metric	Whole archive (#Entries)	Similar resolution (#Entries, resolution range(Å))
R_{free}	130704	5197 (2.10-2.10)
Clashscore	141614	5710 (2.10-2.10)
Ramachandran outliers	138981	5647 (2.10-2.10)
Sidechain outliers	138945	5648 (2.10-2.10)
RSRZ outliers	127900	5083 (2.10-2.10)

The table below summarises the geometric issues observed across the polymeric chains and their fit to the electron density. The red, orange, yellow and green segments of the lower bar indicate the fraction of residues that contain outliers for ≥ 3 , 2, 1 and 0 types of geometric quality criteria respectively. A grey segment represents the fraction of residues that are not modelled. The numeric value for each fraction is indicated below the corresponding segment, with a dot representing fractions $\leq 5\%$. The upper red bar (where present) indicates the fraction of residues that have poor fit to the electron density. The numeric value is given above the bar.

Mol	Chain	Length	Quality of chain
1	A	238	<div> <div>21%</div> <div>58%</div> <div>31%</div> <div>7%</div> <div>• •</div> </div>
1	U	238	<div> <div>20%</div> <div>51%</div> <div>36%</div> <div>9%</div> <div>• •</div> </div>
2	D	272	<div> <div>12%</div> <div>61%</div> <div>30%</div> <div>8%</div> <div>•</div> </div>

Continued on next page...

Ideal geometry (proteins) : Engh & Huber (2001)
 Ideal geometry (DNA, RNA) : Parkinson et al. (1996)
 Validation Pipeline (wwPDB-VP) : 2.36.2

Continued from previous page...

Mol	Chain	Length	Quality of chain
2	X	272	
3	B	25	
3	E	25	
3	V	25	
3	Y	25	

2 Entry composition

There are 6 unique types of molecules in this entry. The entry contains 8838 atoms, of which 0 are hydrogens and 0 are deuteriums.

In the tables below, the ZeroOcc column contains the number of atoms modelled with zero occupancy, the AltConf column contains the number of residues with at least one atom in alternate conformation and the Trace column contains the number of residues modelled with at most 2 atoms.

- Molecule 1 is a protein called RETINOIC ACID RECEPTOR RXR-ALPHA.

Mol	Chain	Residues	Atoms					ZeroOcc	AltConf	Trace
1	A	232	Total	C	N	O	S	0	0	0
			1754	1117	306	321	10			
1	U	232	Total	C	N	O	S	0	0	0
			1754	1117	306	321	10			

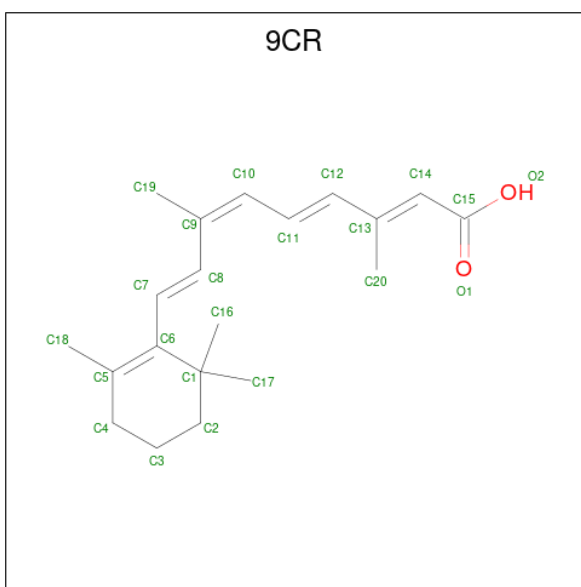
- Molecule 2 is a protein called PEROXISOME PROLIFERATOR ACTIVATED RECEPTOR GAMMA.

Mol	Chain	Residues	Atoms					ZeroOcc	AltConf	Trace
2	D	272	Total	C	N	O	S	0	0	0
			2183	1409	356	408	10			
2	X	272	Total	C	N	O	S	0	0	0
			2142	1377	347	408	10			

- Molecule 3 is a protein called STEROID RECEPTOR COACTIVATOR.

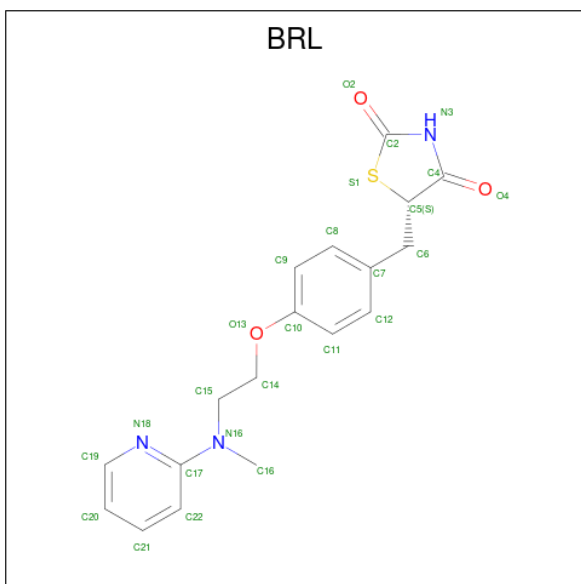
Mol	Chain	Residues	Atoms				ZeroOcc	AltConf	Trace
3	B	10	Total	C	N	O	0	0	0
			86	55	18	13			
3	V	15	Total	C	N	O	0	0	0
			127	79	27	21			
3	E	16	Total	C	N	O	0	0	0
			129	79	27	23			
3	Y	13	Total	C	N	O	0	0	0
			117	73	25	19			

- Molecule 4 is (9cis)-retinoic acid (three-letter code: 9CR) (formula: C₂₀H₂₈O₂).



Mol	Chain	Residues	Atoms			ZeroOcc	AltConf
4	A	1	Total	C	O	0	0
			22	20	2		
4	U	1	Total	C	O	0	0
			22	20	2		

- Molecule 5 is 2,4-THIAZOLIDINEDIONE, 5-[[4-[2-(METHYL-2-PYRIDINYLAMINO)ETHOXY]PHENYL]METHYL]-(9CL) (three-letter code: BRL) (formula: C₁₈H₁₉N₃O₃S).



Mol	Chain	Residues	Atoms					ZeroOcc	AltConf
5	D	1	Total	C	N	O	S	0	0
			25	18	3	3	1		

Continued on next page...

Continued from previous page...

Mol	Chain	Residues	Atoms					ZeroOcc	AltConf
5	X	1	Total	C	N	O	S	0	0
			25	18	3	3	1		

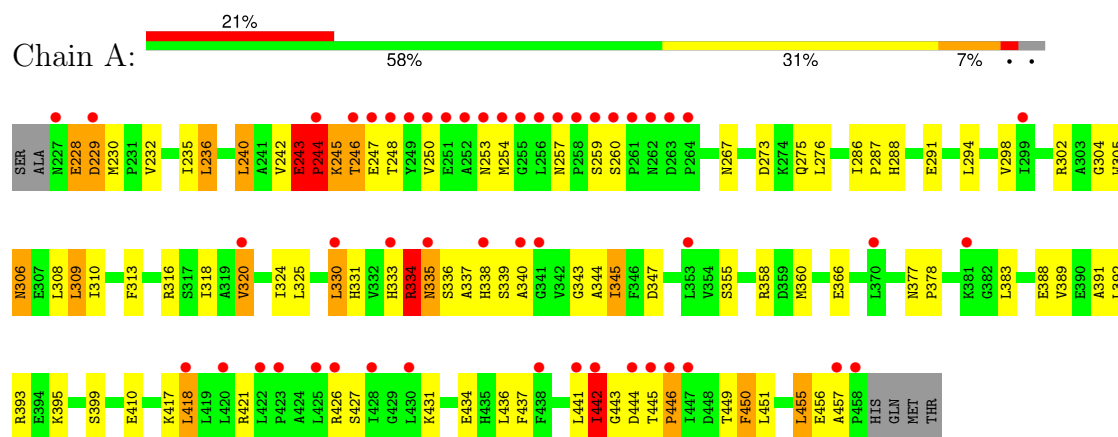
- Molecule 6 is water.

Mol	Chain	Residues	Atoms		ZeroOcc	AltConf
6	A	64	Total	O	0	0
			64	64		
6	D	151	Total	O	0	0
			151	151		
6	U	79	Total	O	0	0
			79	79		
6	X	132	Total	O	0	0
			132	132		
6	B	3	Total	O	0	0
			3	3		
6	V	8	Total	O	0	0
			8	8		
6	E	9	Total	O	0	0
			9	9		
6	Y	6	Total	O	0	0
			6	6		

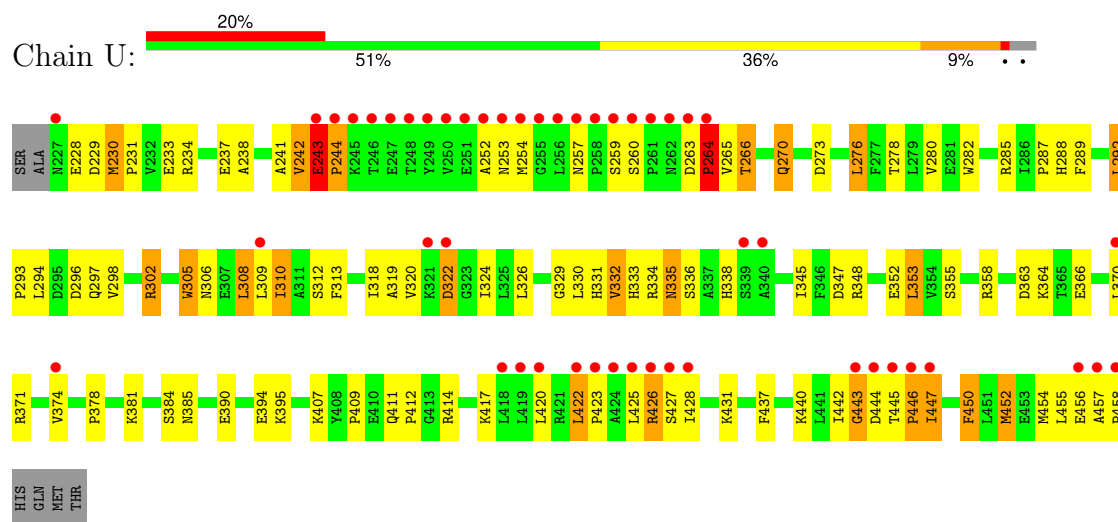
3 Residue-property plots [i](#)

These plots are drawn for all protein, RNA, DNA and oligosaccharide chains in the entry. The first graphic for a chain summarises the proportions of the various outlier classes displayed in the second graphic. The second graphic shows the sequence view annotated by issues in geometry and electron density. Residues are color-coded according to the number of geometric quality criteria for which they contain at least one outlier: green = 0, yellow = 1, orange = 2 and red = 3 or more. A red dot above a residue indicates a poor fit to the electron density ($RSRZ > 2$). Stretches of 2 or more consecutive residues without any outlier are shown as a green connector. Residues present in the sample, but not in the model, are shown in grey.

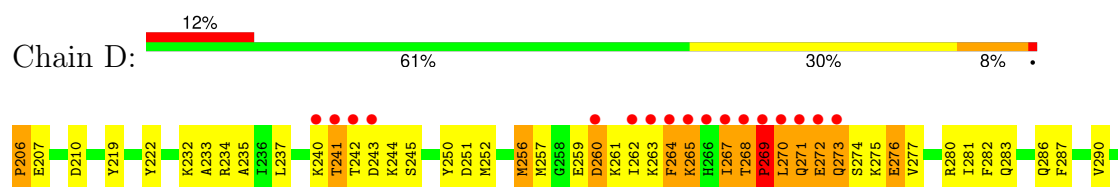
• Molecule 1: RETINOIC ACID RECEPTOR RXR-ALPHA

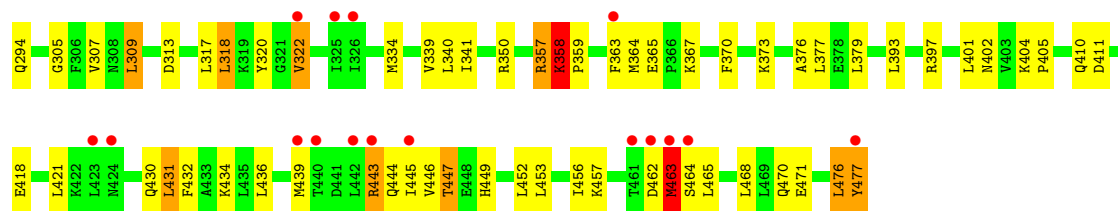


• Molecule 1: RETINOIC ACID RECEPTOR RXR-ALPHA

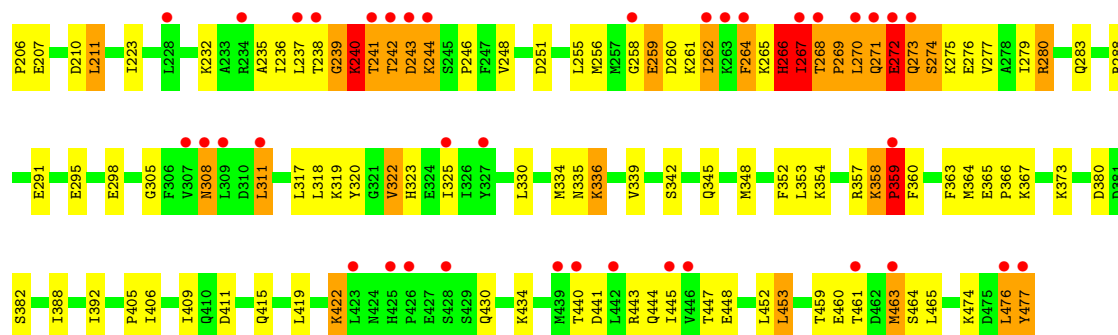


• Molecule 2: PEROXISOME PROLIFERATOR ACTIVATED RECEPTOR GAMMA

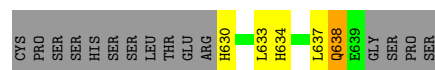




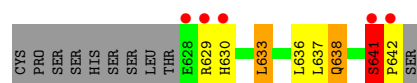
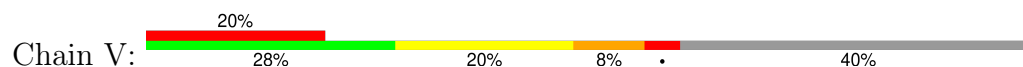
• Molecule 2: PEROXISOME PROLIFERATOR ACTIVATED RECEPTOR GAMMA



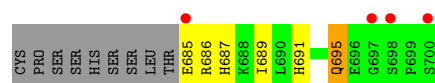
• Molecule 3: STEROID RECEPTOR COACTIVATOR



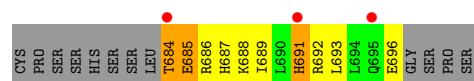
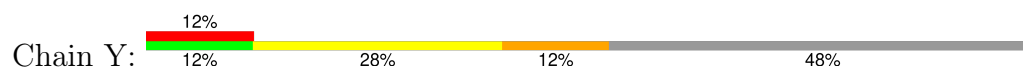
• Molecule 3: STEROID RECEPTOR COACTIVATOR



• Molecule 3: STEROID RECEPTOR COACTIVATOR



• Molecule 3: STEROID RECEPTOR COACTIVATOR



4 Data and refinement statistics

Property	Value	Source
Space group	P 1 21 1	Depositor
Cell constants a, b, c, α , β , γ	49.26Å 222.36Å 55.29Å 90.00° 98.59° 90.00°	Depositor
Resolution (Å)	20.00 – 2.10 44.00 – 2.10	Depositor EDS
% Data completeness (in resolution range)	87.8 (20.00-2.10) 87.7 (44.00-2.10)	Depositor EDS
R_{merge}	0.05	Depositor
R_{sym}	(Not available)	Depositor
$\langle I/\sigma(I) \rangle$ ¹	1.69 (at 2.10Å)	Xtriage
Refinement program	CNS 0.5	Depositor
R, R_{free}	0.250 , 0.292 0.240 , 0.287	Depositor DCC
R_{free} test set	6068 reflections (10.12%)	wwPDB-VP
Wilson B-factor (Å ²)	34.2	Xtriage
Anisotropy	0.749	Xtriage
Bulk solvent k_{sol} (e/Å ³), B_{sol} (Å ²)	0.34 , 52.0	EDS
L-test for twinning ²	$\langle L \rangle = 0.50$, $\langle L^2 \rangle = 0.33$	Xtriage
Estimated twinning fraction	No twinning to report.	Xtriage
F_o, F_c correlation	0.94	EDS
Total number of atoms	8838	wwPDB-VP
Average B, all atoms (Å ²)	55.0	wwPDB-VP

Xtriage's analysis on translational NCS is as follows: *The largest off-origin peak in the Patterson function is 4.22% of the height of the origin peak. No significant pseudotranslation is detected.*

¹Intensities estimated from amplitudes.

²Theoretical values of $\langle |L| \rangle$, $\langle L^2 \rangle$ for acentric reflections are 0.5, 0.333 respectively for untwinned datasets, and 0.375, 0.2 for perfectly twinned datasets.

5 Model quality

5.1 Standard geometry

Bond lengths and bond angles in the following residue types are not validated in this section: 9CR, BRL

The Z score for a bond length (or angle) is the number of standard deviations the observed value is removed from the expected value. A bond length (or angle) with $|Z| > 5$ is considered an outlier worth inspection. RMSZ is the root-mean-square of all Z scores of the bond lengths (or angles).

Mol	Chain	Bond lengths		Bond angles	
		RMSZ	# Z >5	RMSZ	# Z >5
1	A	0.34	0/1789	0.69	2/2414 (0.1%)
1	U	0.35	0/1789	0.64	0/2414
2	D	0.36	0/2221	0.65	1/2992 (0.0%)
2	X	0.34	0/2178	0.68	2/2938 (0.1%)
3	B	0.33	0/87	0.69	0/116
3	E	0.33	0/131	0.64	0/175
3	V	0.32	0/129	0.68	0/171
3	Y	0.31	0/118	0.65	0/156
All	All	0.35	0/8442	0.67	5/11376 (0.0%)

There are no bond length outliers.

All (5) bond angle outliers are listed below:

Mol	Chain	Res	Type	Atoms	Z	Observed(°)	Ideal(°)
1	A	243	GLU	C-N-CD	-10.26	98.02	120.60
2	X	266	HIS	N-CA-C	6.78	129.30	111.00
1	A	243	GLU	C-N-CA	5.98	147.12	122.00
2	X	206	PRO	N-CA-CB	5.44	109.83	103.30
2	D	206	PRO	N-CA-CB	5.37	109.74	103.30

There are no chirality outliers.

There are no planarity outliers.

5.2 Too-close contacts

In the following table, the Non-H and H(model) columns list the number of non-hydrogen atoms and hydrogen atoms in the chain respectively. The H(added) column lists the number of hydrogen atoms added and optimized by MolProbity. The Clashes column lists the number of clashes within the asymmetric unit, whereas Symm-Clashes lists symmetry-related clashes.

Mol	Chain	Non-H	H(model)	H(added)	Clashes	Symm-Clashes
1	A	1754	0	1733	78	0
1	U	1754	0	1733	137	0
2	D	2183	0	2243	135	0
2	X	2142	0	2162	101	0
3	B	86	0	86	9	0
3	E	129	0	125	16	0
3	V	127	0	131	14	0
3	Y	117	0	123	17	0
4	A	22	0	27	1	0
4	U	22	0	27	2	0
5	D	25	0	19	4	0
5	X	25	0	19	1	0
6	A	64	0	0	3	0
6	B	3	0	0	0	0
6	D	151	0	0	5	0
6	E	9	0	0	1	0
6	U	79	0	0	10	0
6	V	8	0	0	1	0
6	X	132	0	0	6	0
6	Y	6	0	0	0	0
All	All	8838	0	8428	476	0

The all-atom clashscore is defined as the number of clashes found per 1000 atoms (including hydrogen atoms). The all-atom clashscore for this structure is 28.

The worst 5 of 476 close contacts within the same asymmetric unit are listed below, sorted by their clash magnitude.

Atom-1	Atom-2	Interatomic distance (Å)	Clash overlap (Å)
1:A:335:ASN:HD22	1:A:336:SER:N	1.45	1.12
1:A:267:ASN:HD22	1:A:330:LEU:HD11	1.16	1.10
2:D:262:ILE:HA	2:D:265:LYS:HB2	1.41	1.02
3:E:685:GLU:HG2	3:E:686:ARG:H	1.27	0.99
1:U:306:ASN:O	1:U:310:ILE:HG22	1.64	0.95

There are no symmetry-related clashes.

5.3 Torsion angles [i](#)

5.3.1 Protein backbone [i](#)

In the following table, the Percentiles column shows the percent Ramachandran outliers of the chain as a percentile score with respect to all X-ray entries followed by that with respect to entries of similar resolution.

The Analysed column shows the number of residues for which the backbone conformation was analysed, and the total number of residues.

Mol	Chain	Analysed	Favoured	Allowed	Outliers	Percentiles	
1	A	230/238 (97%)	191 (83%)	21 (9%)	18 (8%)	1	0
1	U	230/238 (97%)	191 (83%)	24 (10%)	15 (6%)	1	0
2	D	270/272 (99%)	240 (89%)	15 (6%)	15 (6%)	2	0
2	X	270/272 (99%)	235 (87%)	16 (6%)	19 (7%)	1	0
3	B	8/25 (32%)	7 (88%)	1 (12%)	0	100	100
3	E	14/25 (56%)	13 (93%)	1 (7%)	0	100	100
3	V	13/25 (52%)	10 (77%)	2 (15%)	1 (8%)	1	0
3	Y	11/25 (44%)	10 (91%)	1 (9%)	0	100	100
All	All	1046/1120 (93%)	897 (86%)	81 (8%)	68 (6%)	1	0

5 of 68 Ramachandran outliers are listed below:

Mol	Chain	Res	Type
1	A	243	GLU
1	A	244	PRO
1	A	246	THR
1	A	247	GLU
1	A	253	ASN

5.3.2 Protein sidechains [i](#)

In the following table, the Percentiles column shows the percent sidechain outliers of the chain as a percentile score with respect to all X-ray entries followed by that with respect to entries of similar resolution.

The Analysed column shows the number of residues for which the sidechain conformation was analysed, and the total number of residues.

Mol	Chain	Analysed	Rotameric	Outliers	Percentiles	
1	A	182/205 (89%)	161 (88%)	21 (12%)	5	3

Continued on next page...

Continued from previous page...

Mol	Chain	Analysed	Rotameric	Outliers	Percentiles	
1	U	182/205 (89%)	160 (88%)	22 (12%)	5	2
2	D	244/245 (100%)	226 (93%)	18 (7%)	13	10
2	X	236/245 (96%)	212 (90%)	24 (10%)	7	4
3	B	9/24 (38%)	7 (78%)	2 (22%)	1	0
3	E	14/24 (58%)	13 (93%)	1 (7%)	14	11
3	V	14/24 (58%)	10 (71%)	4 (29%)	0	0
3	Y	13/24 (54%)	10 (77%)	3 (23%)	1	0
All	All	894/996 (90%)	799 (89%)	95 (11%)	6	4

5 of 95 residues with a non-rotameric sidechain are listed below:

Mol	Chain	Res	Type
1	U	426	ARG
2	X	298	GLU
1	U	450	PHE
2	X	248	VAL
2	X	322	VAL

Sometimes sidechains can be flipped to improve hydrogen bonding and reduce clashes. 5 of 26 such sidechains are listed below:

Mol	Chain	Res	Type
1	U	297	GLN
1	U	406	HIS
3	E	695	GLN
1	U	335	ASN
1	U	411	GLN

5.3.3 RNA ⓘ

There are no RNA molecules in this entry.

5.4 Non-standard residues in protein, DNA, RNA chains ⓘ

There are no non-standard protein/DNA/RNA residues in this entry.

5.5 Carbohydrates [i](#)

There are no monosaccharides in this entry.

5.6 Ligand geometry [i](#)

4 ligands are modelled in this entry.

In the following table, the Counts columns list the number of bonds (or angles) for which Mogul statistics could be retrieved, the number of bonds (or angles) that are observed in the model and the number of bonds (or angles) that are defined in the Chemical Component Dictionary. The Link column lists molecule types, if any, to which the group is linked. The Z score for a bond length (or angle) is the number of standard deviations the observed value is removed from the expected value. A bond length (or angle) with $|Z| > 2$ is considered an outlier worth inspection. RMSZ is the root-mean-square of all Z scores of the bond lengths (or angles).

Mol	Type	Chain	Res	Link	Bond lengths			Bond angles		
					Counts	RMSZ	# Z > 2	Counts	RMSZ	# Z > 2
5	BRL	D	503	-	27,27,27	2.71	15 (55%)	36,36,36	2.69	12 (33%)
5	BRL	X	504	-	27,27,27	2.58	11 (40%)	36,36,36	2.80	11 (30%)
4	9CR	U	502	-	22,22,22	3.76	10 (45%)	30,30,30	2.68	12 (40%)
4	9CR	A	501	-	22,22,22	3.86	10 (45%)	30,30,30	2.49	14 (46%)

In the following table, the Chirals column lists the number of chiral outliers, the number of chiral centers analysed, the number of these observed in the model and the number defined in the Chemical Component Dictionary. Similar counts are reported in the Torsion and Rings columns. '-' means no outliers of that kind were identified.

Mol	Type	Chain	Res	Link	Chirals	Torsions	Rings
5	BRL	D	503	-	-	2/14/26/26	0/3/3/3
5	BRL	X	504	-	-	0/14/26/26	0/3/3/3
4	9CR	U	502	-	-	6/15/32/32	0/1/1/1
4	9CR	A	501	-	-	6/15/32/32	0/1/1/1

The worst 5 of 46 bond length outliers are listed below:

Mol	Chain	Res	Type	Atoms	Z	Observed(Å)	Ideal(Å)
4	A	501	9CR	C1-C6	11.89	1.69	1.53
4	U	502	9CR	C1-C6	10.89	1.67	1.53
4	U	502	9CR	C5-C6	8.90	1.49	1.34
4	A	501	9CR	C5-C6	8.81	1.49	1.34
5	D	503	BRL	C17-N16	7.64	1.56	1.37

The worst 5 of 49 bond angle outliers are listed below:

Mol	Chain	Res	Type	Atoms	Z	Observed(°)	Ideal(°)
5	X	504	BRL	C4-N3-C2	-9.25	112.02	118.20
5	X	504	BRL	S1-C2-N3	8.87	116.68	110.44
5	D	503	BRL	S1-C2-N3	8.79	116.62	110.44
5	D	503	BRL	C4-N3-C2	-8.44	112.57	118.20
4	U	502	9CR	C17-C1-C6	6.83	120.96	110.24

There are no chirality outliers.

5 of 14 torsion outliers are listed below:

Mol	Chain	Res	Type	Atoms
4	A	501	9CR	C5-C6-C7-C8
4	U	502	9CR	C5-C6-C7-C8
4	A	501	9CR	C1-C6-C7-C8
4	U	502	9CR	C1-C6-C7-C8
4	A	501	9CR	C13-C14-C15-O1

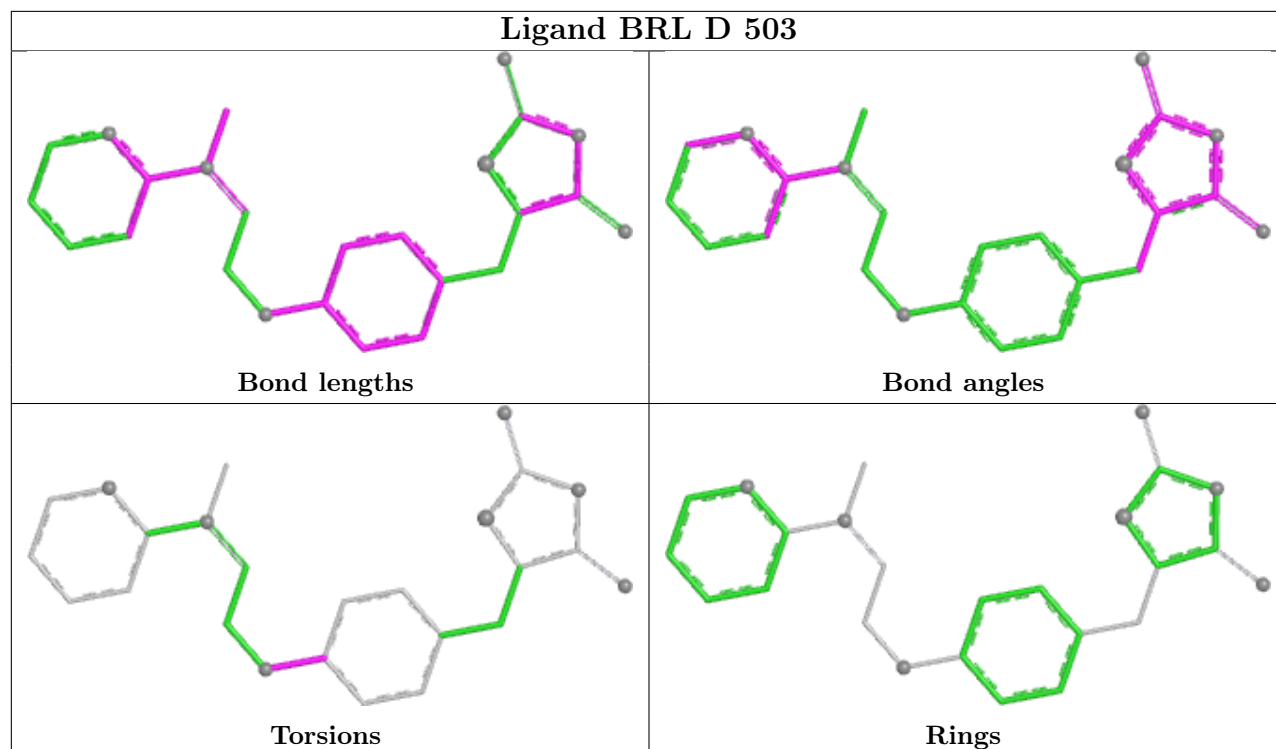
There are no ring outliers.

4 monomers are involved in 8 short contacts:

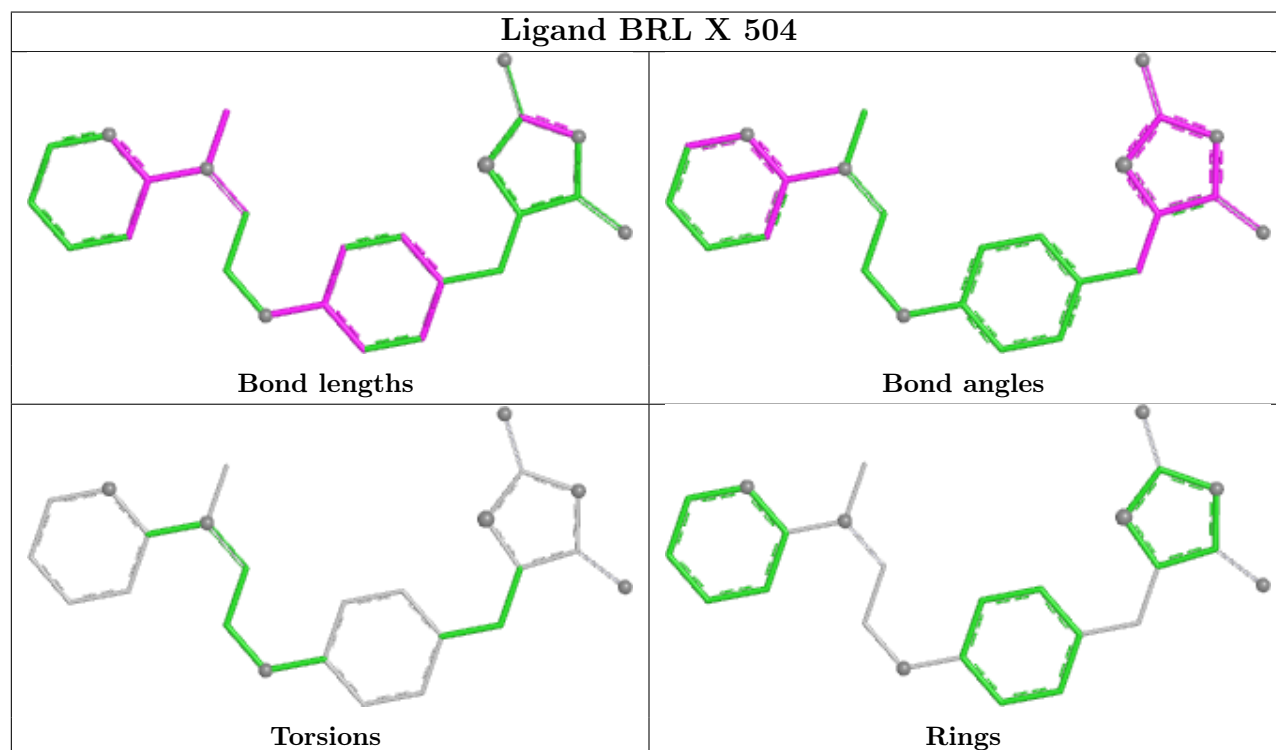
Mol	Chain	Res	Type	Clashes	Symm-Clashes
5	D	503	BRL	4	0
5	X	504	BRL	1	0
4	U	502	9CR	2	0
4	A	501	9CR	1	0

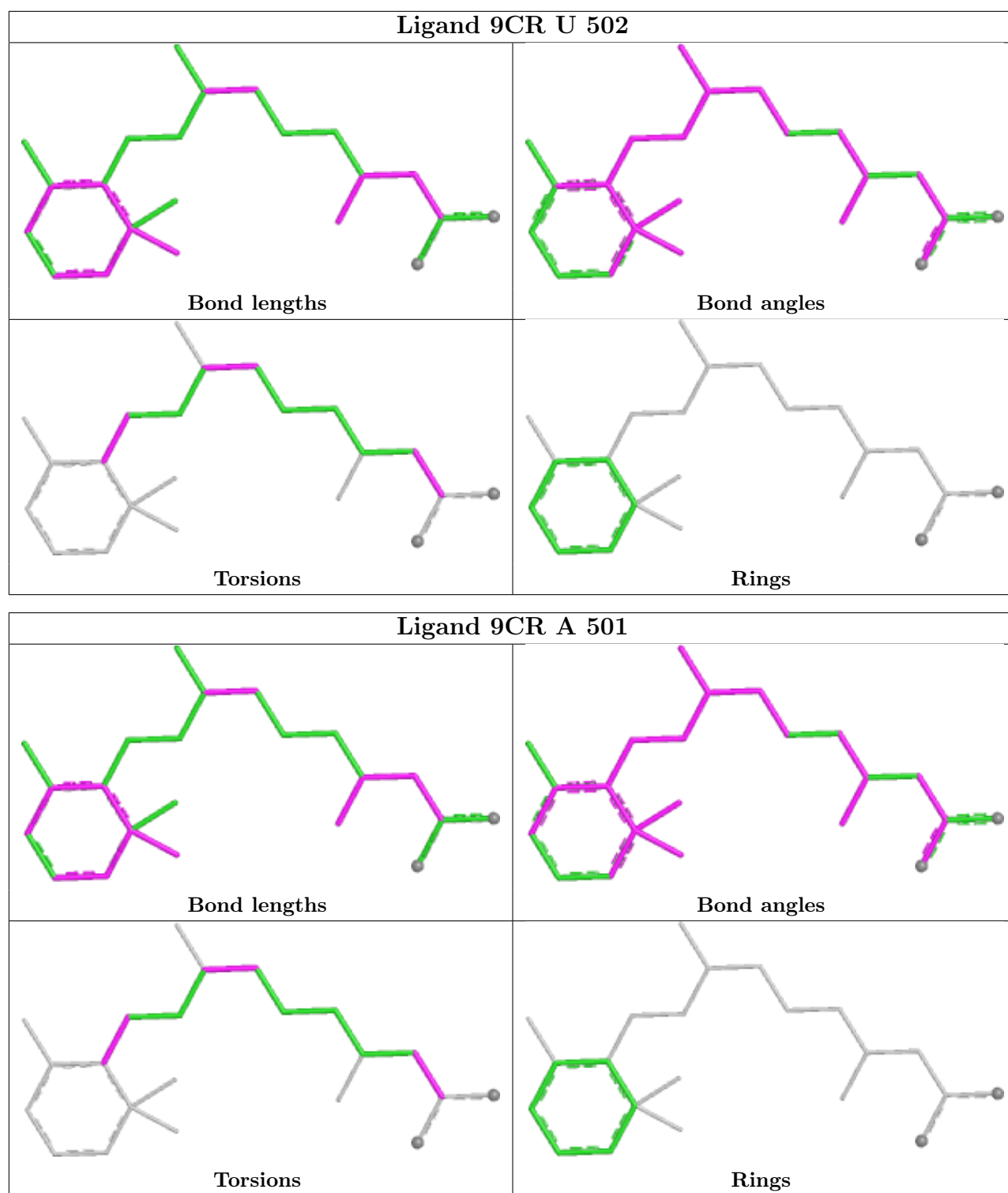
The following is a two-dimensional graphical depiction of Mogul quality analysis of bond lengths, bond angles, torsion angles, and ring geometry for all instances of the Ligand of Interest. In addition, ligands with molecular weight > 250 and outliers as shown on the validation Tables will also be included. For torsion angles, if less than 5% of the Mogul distribution of torsion angles is within 10 degrees of the torsion angle in question, then that torsion angle is considered an outlier. Any bond that is central to one or more torsion angles identified as an outlier by Mogul will be highlighted in the graph. For rings, the root-mean-square deviation (RMSD) between the ring in question and similar rings identified by Mogul is calculated over all ring torsion angles. If the average RMSD is greater than 60 degrees and the minimal RMSD between the ring in question and any Mogul-identified rings is also greater than 60 degrees, then that ring is considered an outlier. The outliers are highlighted in purple. The color gray indicates Mogul did not find sufficient equivalents in the CSD to analyse the geometry.

Ligand BRL D 503



Ligand BRL X 504





5.7 Other polymers [i](#)

There are no such residues in this entry.

5.8 Polymer linkage issues ⓘ

There are no chain breaks in this entry.

6 Fit of model and data [i](#)

6.1 Protein, DNA and RNA chains [i](#)

In the following table, the column labelled ‘#RSRZ> 2’ contains the number (and percentage) of RSRZ outliers, followed by percent RSRZ outliers for the chain as percentile scores relative to all X-ray entries and entries of similar resolution. The OWAB column contains the minimum, median, 95th percentile and maximum values of the occupancy-weighted average B-factor per residue. The column labelled ‘Q< 0.9’ lists the number of (and percentage) of residues with an average occupancy less than 0.9.

Mol	Chain	Analysed	<RSRZ>	#RSRZ>2	OWAB(Å ²)	Q<0.9
1	A	232/238 (97%)	1.55	50 (21%) 0 0	32, 54, 120, 134	0
1	U	232/238 (97%)	1.52	48 (20%) 1 1	31, 51, 119, 126	0
2	D	272/272 (100%)	0.93	33 (12%) 4 5	31, 46, 93, 119	0
2	X	272/272 (100%)	0.74	38 (13%) 2 3	31, 51, 88, 100	0
3	B	10/25 (40%)	0.38	0 100 100	55, 64, 75, 81	0
3	E	16/25 (64%)	1.43	4 (25%) 0 0	53, 63, 81, 86	0
3	V	15/25 (60%)	2.85	5 (33%) 0 0	59, 72, 101, 104	0
3	Y	13/25 (52%)	1.34	3 (23%) 0 0	61, 75, 85, 93	0
All	All	1062/1120 (94%)	1.18	181 (17%) 1 1	31, 51, 99, 134	0

The worst 5 of 181 RSRZ outliers are listed below:

Mol	Chain	Res	Type	RSRZ
2	D	271	GLN	21.5
1	U	259	SER	21.5
1	A	259	SER	20.3
1	A	261	PRO	18.8
1	U	260	SER	18.7

6.2 Non-standard residues in protein, DNA, RNA chains [i](#)

There are no non-standard protein/DNA/RNA residues in this entry.

6.3 Carbohydrates [i](#)

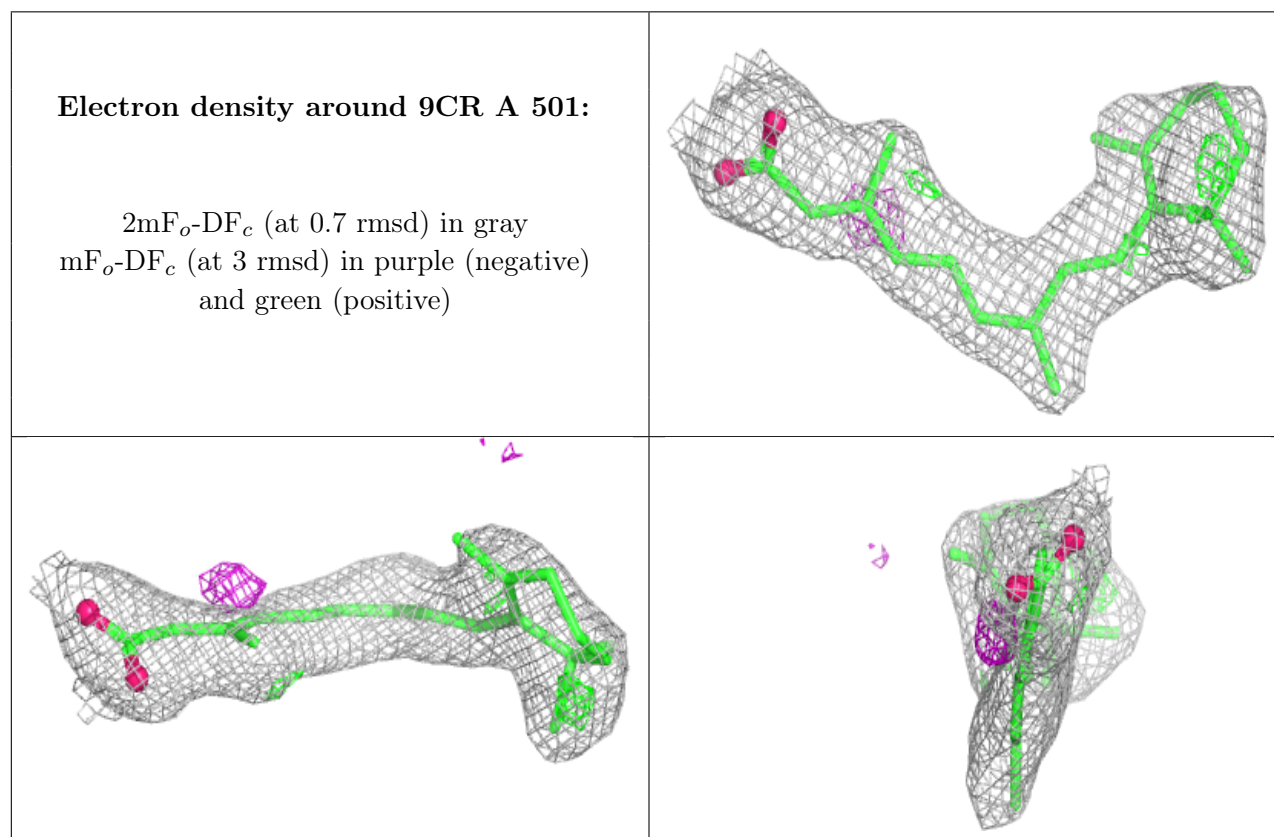
There are no monosaccharides in this entry.

6.4 Ligands [i](#)

In the following table, the Atoms column lists the number of modelled atoms in the group and the number defined in the chemical component dictionary. The B-factors column lists the minimum, median, 95th percentile and maximum values of B factors of atoms in the group. The column labelled 'Q<0.9' lists the number of atoms with occupancy less than 0.9.

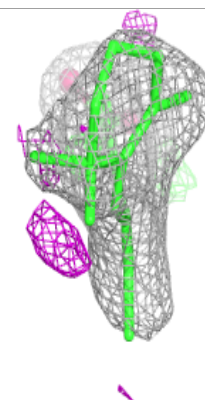
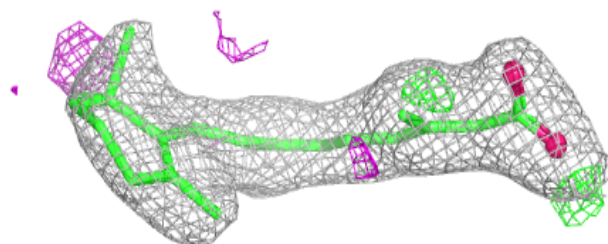
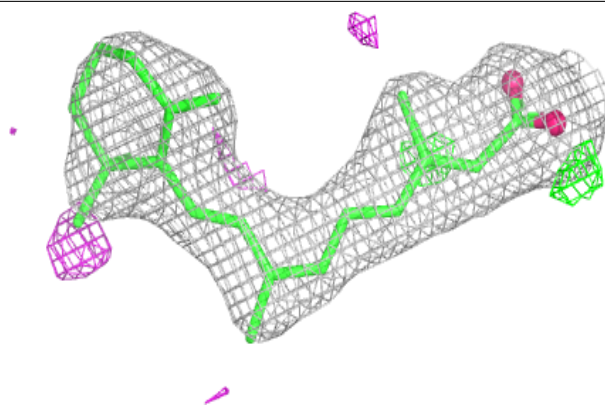
Mol	Type	Chain	Res	Atoms	RSCC	RSR	B-factors(\AA^2)	Q<0.9
4	9CR	A	501	22/22	0.86	0.26	44,61,71,72	0
4	9CR	U	502	22/22	0.90	0.23	41,49,63,64	0
5	BRL	D	503	25/25	0.93	0.17	41,45,47,49	0
5	BRL	X	504	25/25	0.94	0.17	37,40,48,48	0

The following is a graphical depiction of the model fit to experimental electron density of all instances of the Ligand of Interest. In addition, ligands with molecular weight > 250 and outliers as shown on the geometry validation Tables will also be included. Each fit is shown from different orientation to approximate a three-dimensional view.

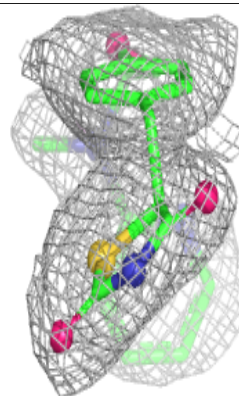
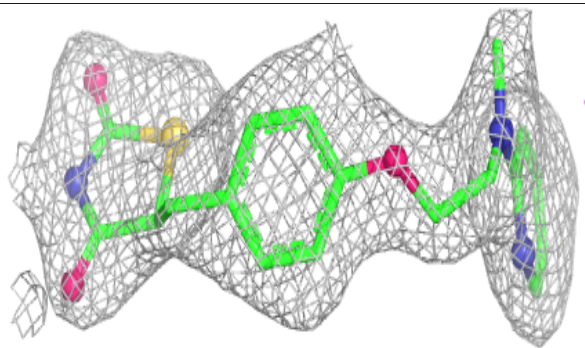
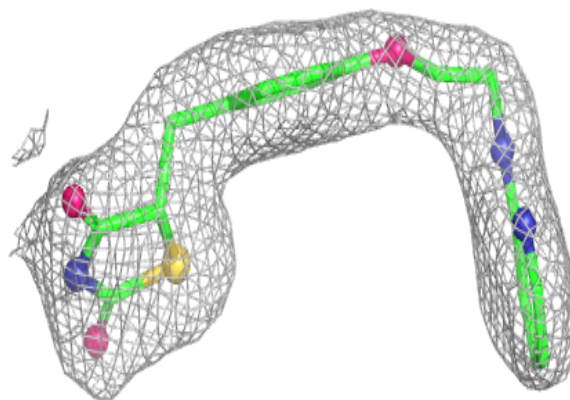


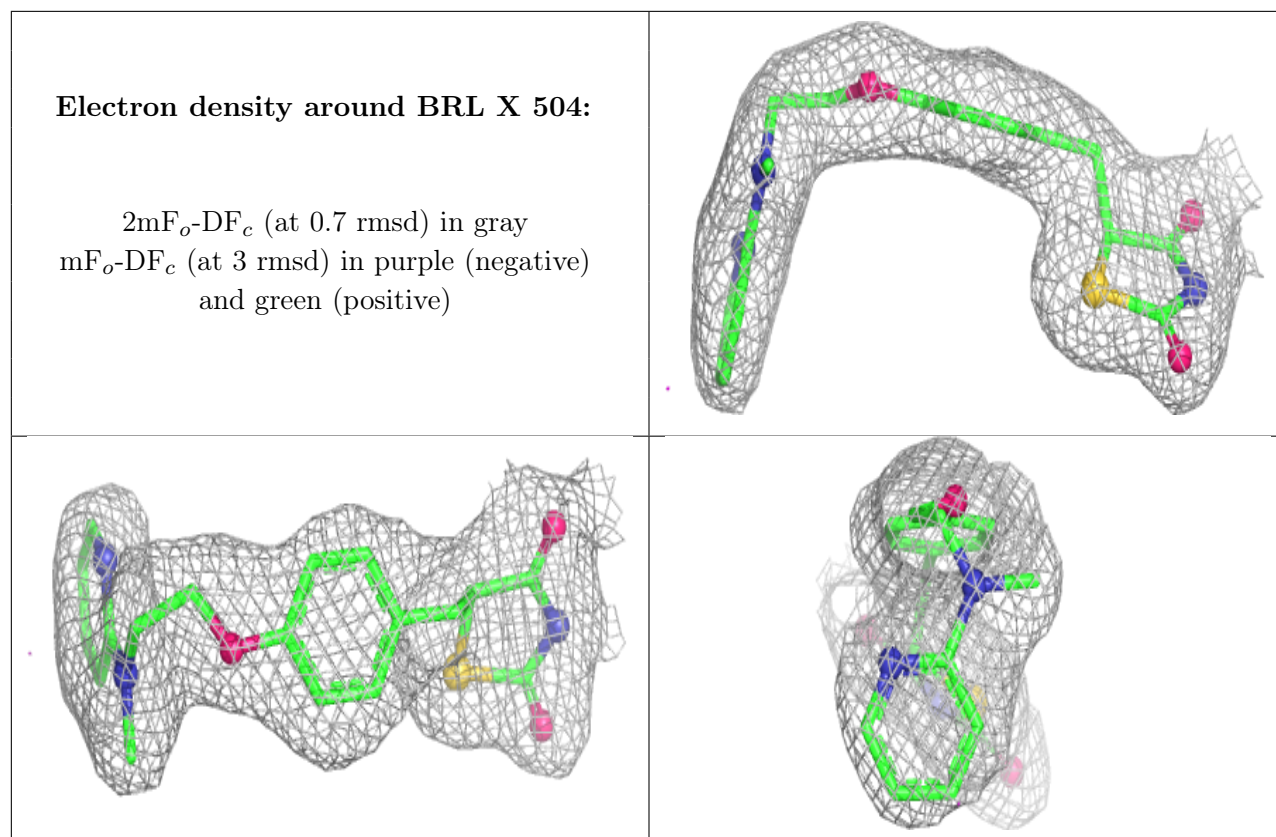
Electron density around 9CR U 502:

$2mF_o-DF_c$ (at 0.7 rmsd) in gray
 mF_o-DF_c (at 3 rmsd) in purple (negative)
and green (positive)

**Electron density around BRL D 503:**

$2mF_o-DF_c$ (at 0.7 rmsd) in gray
 mF_o-DF_c (at 3 rmsd) in purple (negative)
and green (positive)





6.5 Other polymers [i](#)

There are no such residues in this entry.