



Full wwPDB X-ray Structure Validation Report ⓘ

Jul 21, 2025 – 11:27 am BST

PDB ID : 9G5Y / pdb_00009g5y
Title : The structure of Aspergillus fumigatus UDP-GlcNAc pyrophosphorylase in complex with a fragment
Authors : Yan, K.
Deposited on : 2024-07-17
Resolution : 1.91 Å(reported)

This is a Full wwPDB X-ray Structure Validation Report for a publicly released PDB entry.

We welcome your comments at validation@mail.wwpdb.org

A user guide is available at

<https://www.wwpdb.org/validation/2017/XrayValidationReportHelp>

with specific help available everywhere you see the ⓘ symbol.

The types of validation reports are described at

<http://www.wwpdb.org/validation/2017/FAQs#types>.

The following versions of software and data (see [references ⓘ](#)) were used in the production of this report:

MolProbity : 4-5-2 with Phenix2.0rc1
Mogul : 1.8.4, CSD as541be (2020)
Xtriage (Phenix) : 2.0rc1
EDS : 3.0
buster-report : 1.1.7 (2018)
Percentile statistics : 20231227.v01 (using entries in the PDB archive December 27th 2023)
CCP4 : 9.0.006 (Gargrove)
Density-Fitness : 1.0.12
Ideal geometry (proteins) : Engh & Huber (2001)
Ideal geometry (DNA, RNA) : Parkinson et al. (1996)
Validation Pipeline (wwPDB-VP) : 2.44

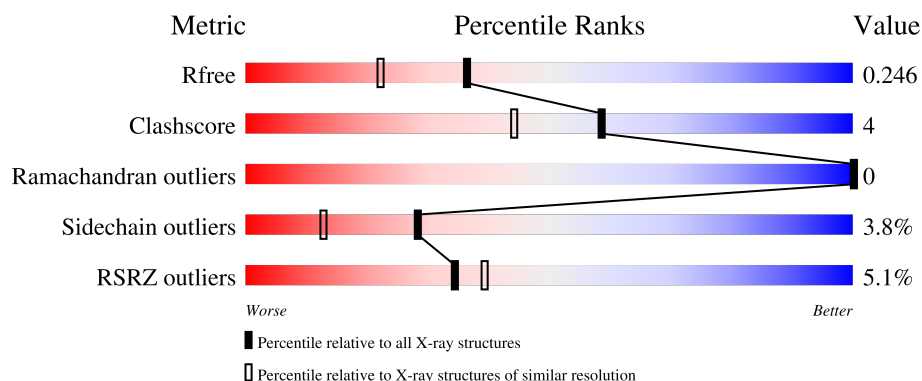
1 Overall quality at a glance

The following experimental techniques were used to determine the structure:

X-RAY DIFFRACTION

The reported resolution of this entry is 1.91 Å.

Percentile scores (ranging between 0-100) for global validation metrics of the entry are shown in the following graphic. The table shows the number of entries on which the scores are based.



Metric	Whole archive (#Entries)	Similar resolution (#Entries, resolution range(Å))
R_{free}	164625	1028 (1.92-1.92)
Clashscore	180529	1100 (1.92-1.92)
Ramachandran outliers	177936	1087 (1.92-1.92)
Sidechain outliers	177891	1087 (1.92-1.92)
RSRZ outliers	164620	1028 (1.92-1.92)

The table below summarises the geometric issues observed across the polymeric chains and their fit to the electron density. The red, orange, yellow and green segments of the lower bar indicate the fraction of residues that contain outliers for ≥ 3 , 2, 1 and 0 types of geometric quality criteria respectively. A grey segment represents the fraction of residues that are not modelled. The numeric value for each fraction is indicated below the corresponding segment, with a dot representing fractions $\leq 5\%$. The upper red bar (where present) indicates the fraction of residues that have poor fit to the electron density. The numeric value is given above the bar.

Mol	Chain	Length	Quality of chain
1	B	484	
2	A	484	

2 Entry composition

There are 6 unique types of molecules in this entry. The entry contains 7543 atoms, of which 0 are hydrogens and 0 are deuteriums.

In the tables below, the ZeroOcc column contains the number of atoms modelled with zero occupancy, the AltConf column contains the number of residues with at least one atom in alternate conformation and the Trace column contains the number of residues modelled with at most 2 atoms.

- Molecule 1 is a protein called UDP-N-acetylglucosamine diphosphorylase.

Mol	Chain	Residues	Atoms					ZeroOcc	AltConf	Trace
1	B	467	Total	C	N	O	S	0	5	0
			3675	2350	625	688	12			

There is a discrepancy between the modelled and reference sequences:

Chain	Residue	Modelled	Actual	Comment	Reference
B	26	GLY	-	expression tag	UNP A0A229XUD0

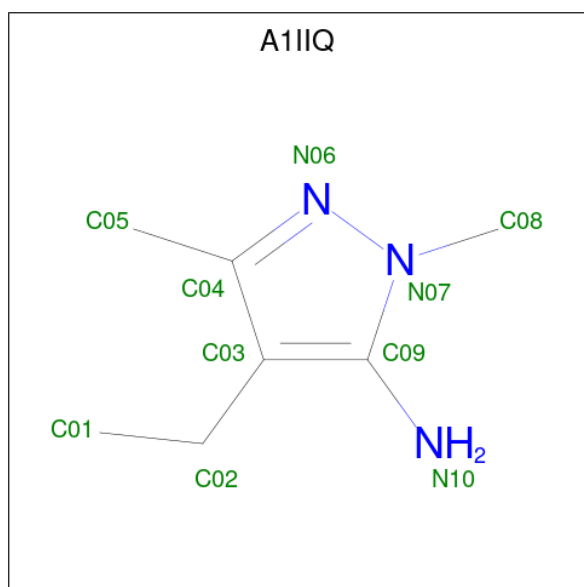
- Molecule 2 is a protein called UDP-N-acetylglucosamine diphosphorylase.

Mol	Chain	Residues	Atoms					ZeroOcc	AltConf	Trace
2	A	455	Total	C	N	O	S	0	5	0
			3567	2280	606	668	13			

There is a discrepancy between the modelled and reference sequences:

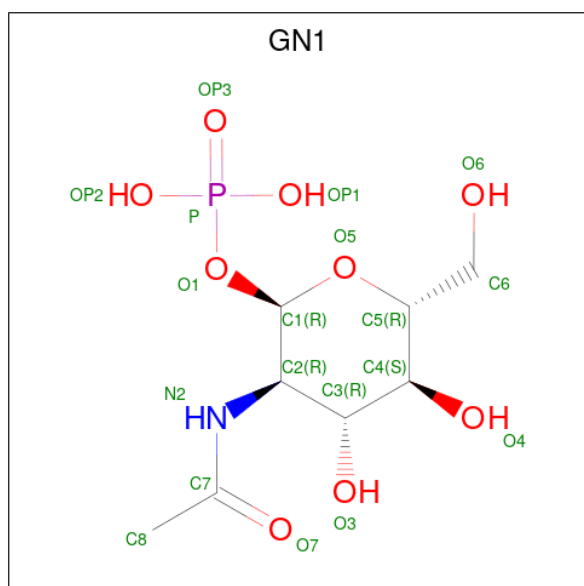
Chain	Residue	Modelled	Actual	Comment	Reference
A	26	GLY	-	expression tag	UNP A0A229XUD0

- Molecule 3 is 4-ethyl-2,5-dimethyl-pyrazol-3-amine (CCD ID: A1IIQ) (formula: C₇H₁₃N₃).



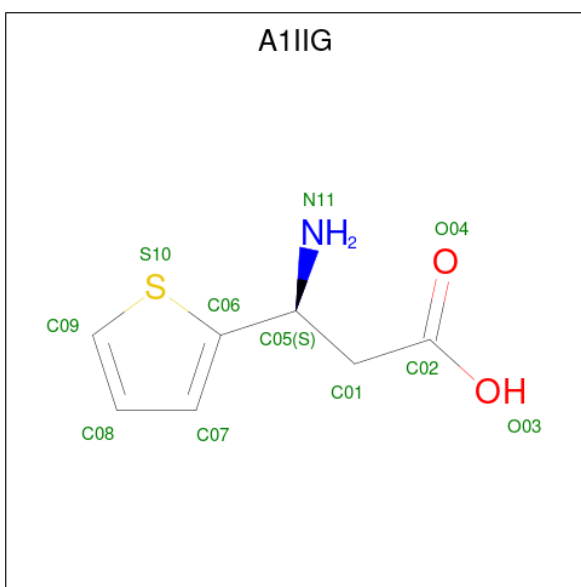
Mol	Chain	Residues	Atoms			ZeroOcc	AltConf
3	B	1	Total	C	N	0	0
			10	7	3		

- Molecule 4 is 2-acetamido-2-deoxy-1-O-phosphono-alpha-D-glucopyranose (CCD ID: GN1) (formula: $C_8H_{16}NO_9P$).



Mol	Chain	Residues	Atoms					ZeroOcc	AltConf
4	B	1	Total	C	N	O	P	0	0
			19	8	1	9	1		

- Molecule 5 is (3 {S})-3-azanyl-3-thiophen-2-yl-propanoic acid (CCD ID: A1IIG) (formula: $C_7H_9NO_2S$) (labeled as "Ligand of Interest" by depositor).



Mol	Chain	Residues	Atoms					ZeroOcc	AltConf
5	B	1	Total	C	N	O	S	0	0
			11	7	1	2	1		

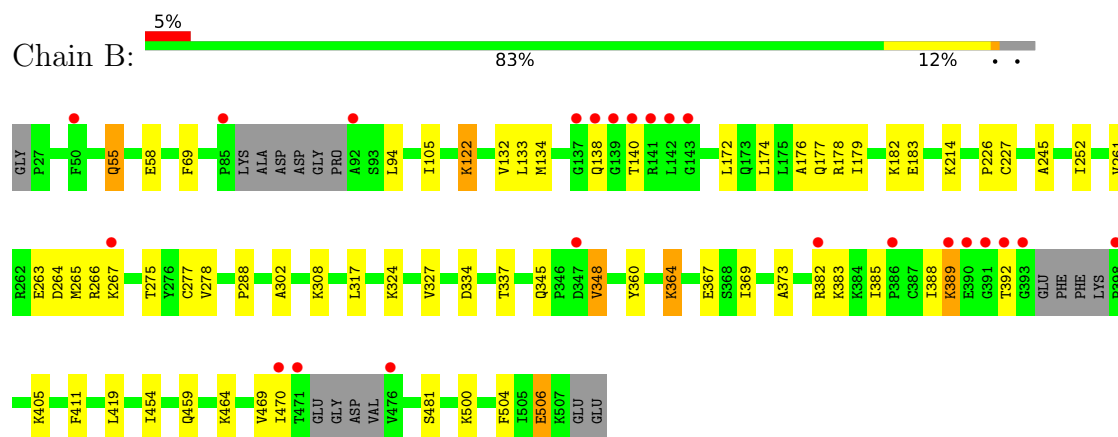
- Molecule 6 is water.

Mol	Chain	Residues	Atoms		ZeroOcc	AltConf
6	B	168	Total	O	0	0
			168	168		
6	A	93	Total	O	0	0
			93	93		

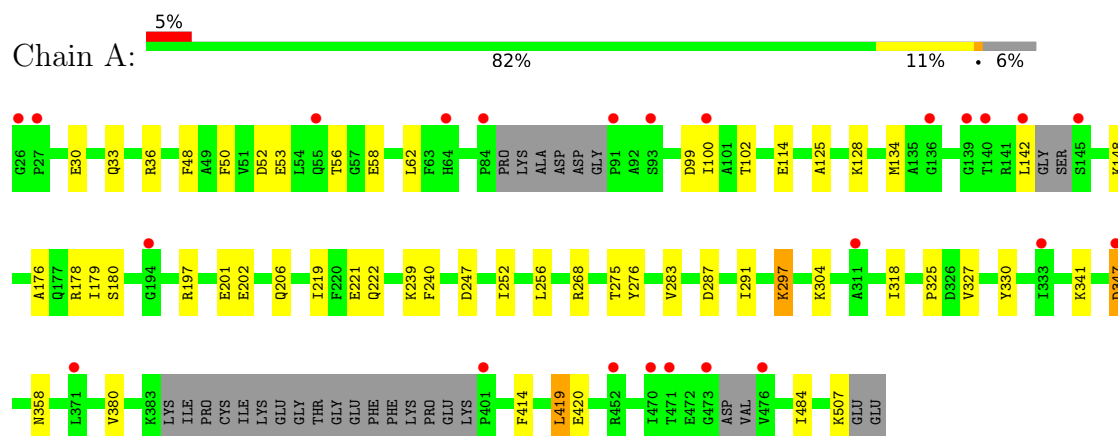
3 Residue-property plots [i](#)

These plots are drawn for all protein, RNA, DNA and oligosaccharide chains in the entry. The first graphic for a chain summarises the proportions of the various outlier classes displayed in the second graphic. The second graphic shows the sequence view annotated by issues in geometry and electron density. Residues are color-coded according to the number of geometric quality criteria for which they contain at least one outlier: green = 0, yellow = 1, orange = 2 and red = 3 or more. A red dot above a residue indicates a poor fit to the electron density ($RSRZ > 2$). Stretches of 2 or more consecutive residues without any outlier are shown as a green connector. Residues present in the sample, but not in the model, are shown in grey.

- Molecule 1: UDP-N-acetylglucosamine diphosphorylase



- Molecule 2: UDP-N-acetylglucosamine diphosphorylase



4 Data and refinement statistics

Property	Value	Source
Space group	P 21 21 21	Depositor
Cell constants a, b, c, α , β , γ	55.53Å 139.50Å 143.22Å 90.00° 90.00° 90.00°	Depositor
Resolution (Å)	71.61 – 1.91 71.61 – 1.91	Depositor EDS
% Data completeness (in resolution range)	73.3 (71.61-1.91) 73.7 (71.61-1.91)	Depositor EDS
R_{merge}	(Not available)	Depositor
R_{sym}	(Not available)	Depositor
$\langle I/\sigma(I) \rangle$ ¹	1.32 (at 1.91Å)	Xtriage
Refinement program	PHENIX (1.19.2_4158: ???)	Depositor
R, R_{free}	0.205 , 0.247 0.206 , 0.246	Depositor DCC
R_{free} test set	4523 reflections (5.16%)	wwPDB-VP
Wilson B-factor (Å ²)	26.6	Xtriage
Anisotropy	0.076	Xtriage
Bulk solvent k_{sol} (e/Å ³), B_{sol} (Å ²)	0.34 , 33.0	EDS
L-test for twinning ²	$\langle L \rangle = 0.48$, $\langle L^2 \rangle = 0.32$	Xtriage
Estimated twinning fraction	0.008 for -h,l,k	Xtriage
F_o, F_c correlation	0.94	EDS
Total number of atoms	7543	wwPDB-VP
Average B, all atoms (Å ²)	30.0	wwPDB-VP

Xtriage's analysis on translational NCS is as follows: *The largest off-origin peak in the Patterson function is 3.82% of the height of the origin peak. No significant pseudotranslation is detected.*

¹Intensities estimated from amplitudes.

²Theoretical values of $\langle |L| \rangle$, $\langle L^2 \rangle$ for acentric reflections are 0.5, 0.333 respectively for untwinned datasets, and 0.375, 0.2 for perfectly twinned datasets.

5 Model quality

5.1 Standard geometry

Bond lengths and bond angles in the following residue types are not validated in this section: YCM, A1IIQ, GN1, A1IIG

The Z score for a bond length (or angle) is the number of standard deviations the observed value is removed from the expected value. A bond length (or angle) with $|Z| > 5$ is considered an outlier worth inspection. RMSZ is the root-mean-square of all Z scores of the bond lengths (or angles).

Mol	Chain	Bond lengths		Bond angles	
		RMSZ	# Z >5	RMSZ	# Z >5
1	B	0.32	0/3756	0.50	0/5063
2	A	0.28	0/3656	0.47	0/4934
All	All	0.30	0/7412	0.49	0/9997

There are no bond length outliers.

There are no bond angle outliers.

There are no chirality outliers.

There are no planarity outliers.

5.2 Too-close contacts

In the following table, the Non-H and H(model) columns list the number of non-hydrogen atoms and hydrogen atoms in the chain respectively. The H(added) column lists the number of hydrogen atoms added and optimized by MolProbity. The Clashes column lists the number of clashes within the asymmetric unit, whereas Symm-Clashes lists symmetry-related clashes.

Mol	Chain	Non-H	H(model)	H(added)	Clashes	Symm-Clashes
1	B	3675	0	3683	35	0
2	A	3567	0	3537	27	0
3	B	10	0	0	0	0
4	B	19	0	0	0	0
5	B	11	0	0	0	0
6	A	93	0	0	4	0
6	B	168	0	0	3	0
All	All	7543	0	7220	62	0

The all-atom clashscore is defined as the number of clashes found per 1000 atoms (including hydrogen atoms). The all-atom clashscore for this structure is 4.

All (62) close contacts within the same asymmetric unit are listed below, sorted by their clash magnitude.

Atom-1	Atom-2	Interatomic distance (Å)	Clash overlap (Å)
1:B:266:ARG:NH1	1:B:367:GLU:OE2	2.14	0.80
2:A:100:ILE:O	2:A:297:LYS:NZ	2.18	0.76
2:A:325:PRO:HD3	2:A:419:LEU:HD13	1.67	0.76
1:B:504:PHE:CZ	1:B:506:GLU:HG3	2.27	0.70
2:A:202:GLU:O	2:A:206:GLN:HG2	1.93	0.68
1:B:172:LEU:HD11	1:B:288:PRO:HG3	1.78	0.66
1:B:227:CYS:HB3	1:B:385:ILE:HD13	1.79	0.64
1:B:481:SER:HB2	1:B:506:GLU:HG2	1.80	0.62
1:B:383:LYS:HG3	1:B:405[A]:LYS:HD2	1.84	0.58
2:A:128:LYS:NZ	6:A:604:HOH:O	2.37	0.57
1:B:138:GLN:HB2	1:B:140:THR:HG23	1.86	0.57
2:A:142:LEU:HD11	2:A:148:LYS:HE3	1.87	0.56
1:B:308:LYS:HD2	1:B:317:LEU:HD21	1.87	0.56
1:B:133:LEU:HD11	1:B:278:VAL:HB	1.89	0.55
2:A:30:GLU:O	2:A:33:GLN:HG2	2.07	0.55
1:B:345:GLN:HB3	1:B:348:VAL:HG13	1.88	0.55
1:B:134:MET:HE2	1:B:275:THR:HG22	1.90	0.54
2:A:50:PHE:CG	2:A:239:LYS:HD2	2.44	0.52
1:B:245:ALA:HB1	1:B:405[B]:LYS:HE3	1.92	0.51
1:B:177:GLN:HG2	1:B:182:LYS:O	2.11	0.51
2:A:58:GLU:HB3	2:A:240:PHE:CG	2.46	0.51
1:B:69:PHE:CE1	1:B:226:PRO:HD3	2.46	0.51
2:A:102:THR:OG1	6:A:601:HOH:O	2.19	0.51
1:B:178:ARG:HD2	6:B:859:HOH:O	2.11	0.50
1:B:263:GLU:O	1:B:267[B]:LYS:HG3	2.11	0.50
2:A:347:ASP:OD1	2:A:347:ASP:N	2.42	0.50
1:B:122:LYS:HB2	1:B:122:LYS:NZ	2.26	0.50
2:A:325:PRO:HG2	2:A:414:PHE:O	2.12	0.49
1:B:382:ARG:HD2	6:B:856:HOH:O	2.12	0.49
1:B:132:VAL:HG11	1:B:252:ILE:HD11	1.94	0.48
1:B:55:GLN:HG2	1:B:58:GLU:OE1	2.13	0.48
2:A:134:MET:HE3	2:A:252:ILE:HD12	1.96	0.48
2:A:287:ASP:O	2:A:291:ILE:HG12	2.14	0.47
2:A:201:GLU:HG2	2:A:219:ILE:HD12	1.97	0.47
1:B:264:ASP:O	1:B:267[A]:LYS:HG3	2.14	0.47
2:A:53:GLU:OE1	2:A:239:LYS:NZ	2.47	0.46
1:B:302:ALA:HB3	1:B:360:TYR:HB3	1.96	0.46
2:A:330:TYR:HB2	6:A:675:HOH:O	2.16	0.46
1:B:364:LYS:HE3	1:B:364:LYS:HB2	1.83	0.46
1:B:459:GLN:HG3	1:B:469:VAL:HG21	1.97	0.46

Continued on next page...

Continued from previous page...

Atom-1	Atom-2	Interatomic distance (Å)	Clash overlap (Å)
2:A:176:ALA:O	2:A:179:ILE:HG12	2.16	0.45
1:B:369:ILE:HG23	1:B:373:ALA:HB2	1.99	0.45
1:B:327:VAL:HB	1:B:411:PHE:CD1	2.52	0.45
2:A:318:ILE:HG12	2:A:327:VAL:HG22	1.98	0.45
2:A:484:ILE:HD11	2:A:507:LYS:HA	2.00	0.43
2:A:36:ARG:HG3	2:A:48:PHE:CG	2.53	0.43
1:B:55:GLN:HG2	1:B:55:GLN:H	1.54	0.43
1:B:261:VAL:HG12	1:B:265:MET:HE3	2.01	0.43
2:A:276:TYR:CE2	2:A:283:VAL:HG11	2.54	0.43
1:B:334:ASP:OD1	1:B:334:ASP:N	2.42	0.42
1:B:388:ILE:HG22	1:B:392:THR:HA	2.01	0.42
1:B:470:ILE:HD13	1:B:470:ILE:HA	1.78	0.42
1:B:389:LYS:HB3	1:B:389:LYS:HE3	1.79	0.42
1:B:334:ASP:OD1	6:B:702:HOH:O	2.22	0.42
2:A:197:ARG:HD2	2:A:221:GLU:HG3	2.02	0.42
2:A:252:ILE:O	2:A:256:LEU:HG	2.20	0.42
2:A:125:ALA:HB1	2:A:180:SER:HB3	2.01	0.41
1:B:176:ALA:O	1:B:179:ILE:HG12	2.20	0.41
2:A:268:ARG:NH1	6:A:603:HOH:O	2.35	0.41
2:A:304:LYS:HB2	2:A:358:ASN:HB3	2.02	0.41
2:A:222:GLN:NE2	2:A:247:ASP:OD1	2.52	0.40
1:B:464:LYS:HE2	1:B:464:LYS:HB3	1.75	0.40

There are no symmetry-related clashes.

5.3 Torsion angles [i](#)

5.3.1 Protein backbone [i](#)

In the following table, the Percentiles column shows the percent Ramachandran outliers of the chain as a percentile score with respect to all X-ray entries followed by that with respect to entries of similar resolution.

The Analysed column shows the number of residues for which the backbone conformation was analysed, and the total number of residues.

Mol	Chain	Analysed	Favoured	Allowed	Outliers	Percentiles	
1	B	463/484 (96%)	451 (97%)	12 (3%)	0	100	100
2	A	450/484 (93%)	442 (98%)	8 (2%)	0	100	100
All	All	913/968 (94%)	893 (98%)	20 (2%)	0	100	100

There are no Ramachandran outliers to report.

5.3.2 Protein sidechains ⓘ

In the following table, the Percentiles column shows the percent sidechain outliers of the chain as a percentile score with respect to all X-ray entries followed by that with respect to entries of similar resolution.

The Analysed column shows the number of residues for which the sidechain conformation was analysed, and the total number of residues.

Mol	Chain	Analysed	Rotameric	Outliers	Percentiles	
1	B	393/407 (97%)	377 (96%)	16 (4%)	26	11
2	A	378/408 (93%)	364 (96%)	14 (4%)	29	13
All	All	771/815 (95%)	741 (96%)	30 (4%)	28	13

All (30) residues with a non-rotameric sidechain are listed below:

Mol	Chain	Res	Type
1	B	55	GLN
1	B	94	LEU
1	B	105	ILE
1	B	122	LYS
1	B	174	LEU
1	B	183	GLU
1	B	214	LYS
1	B	324	LYS
1	B	337	THR
1	B	348	VAL
1	B	364	LYS
1	B	389	LYS
1	B	419	LEU
1	B	454	ILE
1	B	500	LYS
1	B	506	GLU
2	A	52	ASP
2	A	56	THR
2	A	62	LEU
2	A	99	ASP
2	A	114	GLU
2	A	178	ARG
2	A	275	THR
2	A	297	LYS
2	A	341	LYS

Continued on next page...

Continued from previous page...

Mol	Chain	Res	Type
2	A	347	ASP
2	A	380[A]	VAL
2	A	380[B]	VAL
2	A	419	LEU
2	A	420	GLU

Sometimes sidechains can be flipped to improve hydrogen bonding and reduce clashes. All (3) such sidechains are listed below:

Mol	Chain	Res	Type
2	A	177	GLN
2	A	230	ASN
2	A	438	ASN

5.3.3 RNA ⓘ

There are no RNA molecules in this entry.

5.4 Non-standard residues in protein, DNA, RNA chains ⓘ

1 non-standard protein/DNA/RNA residue is modelled in this entry.

In the following table, the Counts columns list the number of bonds (or angles) for which Mogul statistics could be retrieved, the number of bonds (or angles) that are observed in the model and the number of bonds (or angles) that are defined in the Chemical Component Dictionary. The Link column lists molecule types, if any, to which the group is linked. The Z score for a bond length (or angle) is the number of standard deviations the observed value is removed from the expected value. A bond length (or angle) with $|Z| > 2$ is considered an outlier worth inspection. RMSZ is the root-mean-square of all Z scores of the bond lengths (or angles).

Mol	Type	Chain	Res	Link	Bond lengths			Bond angles		
					Counts	RMSZ	$\# Z > 2$	Counts	RMSZ	$\# Z > 2$
1	YCM	B	277	1	7,9,10	1.19	1 (14%)	4,10,12	0.64	0

In the following table, the Chirals column lists the number of chiral outliers, the number of chiral centers analysed, the number of these observed in the model and the number defined in the Chemical Component Dictionary. Similar counts are reported in the Torsion and Rings columns. '-' means no outliers of that kind were identified.

Mol	Type	Chain	Res	Link	Chirals	Torsions	Rings
1	YCM	B	277	1	-	2/6/8/10	-

All (1) bond length outliers are listed below:

Mol	Chain	Res	Type	Atoms	Z	Observed(Å)	Ideal(Å)
1	B	277	YCM	CD-SG	-2.00	1.76	1.81

There are no bond angle outliers.

There are no chirality outliers.

All (2) torsion outliers are listed below:

Mol	Chain	Res	Type	Atoms
1	B	277	YCM	SG-CD-CE-NZ2
1	B	277	YCM	SG-CD-CE-OZ1

There are no ring outliers.

No monomer is involved in short contacts.

5.5 Carbohydrates [i](#)

There are no oligosaccharides in this entry.

5.6 Ligand geometry [i](#)

3 ligands are modelled in this entry.

In the following table, the Counts columns list the number of bonds (or angles) for which Mogul statistics could be retrieved, the number of bonds (or angles) that are observed in the model and the number of bonds (or angles) that are defined in the Chemical Component Dictionary. The Link column lists molecule types, if any, to which the group is linked. The Z score for a bond length (or angle) is the number of standard deviations the observed value is removed from the expected value. A bond length (or angle) with $|Z| > 2$ is considered an outlier worth inspection. RMSZ is the root-mean-square of all Z scores of the bond lengths (or angles).

Mol	Type	Chain	Res	Link	Bond lengths			Bond angles		
					Counts	RMSZ	$\# Z > 2$	Counts	RMSZ	$\# Z > 2$
4	GN1	B	602	-	18,19,19	1.47	4 (22%)	27,28,28	1.56	5 (18%)
5	A1IIG	B	603	-	10,11,11	0.80	0	10,14,14	3.38	5 (50%)
3	A1IIQ	B	601	-	8,10,10	1.68	1 (12%)	7,14,14	2.82	3 (42%)

In the following table, the Chirals column lists the number of chiral outliers, the number of chiral centers analysed, the number of these observed in the model and the number defined in the Chemical Component Dictionary. Similar counts are reported in the Torsion and Rings columns. '-' means no outliers of that kind were identified.

Mol	Type	Chain	Res	Link	Chirals	Torsions	Rings
4	GN1	B	602	-	-	1/10/31/31	0/1/1/1
5	A1IIG	B	603	-	-	4/4/8/8	0/1/1/1
3	A1IIQ	B	601	-	-	0/2/2/2	0/1/1/1

All (5) bond length outliers are listed below:

Mol	Chain	Res	Type	Atoms	Z	Observed(Å)	Ideal(Å)
3	B	601	A1IIQ	C09-N10	3.94	1.45	1.33
4	B	602	GN1	C7-N2	3.23	1.45	1.34
4	B	602	GN1	P-O1	2.84	1.64	1.59
4	B	602	GN1	P-OP1	-2.47	1.45	1.54
4	B	602	GN1	P-OP2	-2.17	1.46	1.54

All (13) bond angle outliers are listed below:

Mol	Chain	Res	Type	Atoms	Z	Observed(°)	Ideal(°)
5	B	603	A1IIG	C08-C09-S10	-8.99	105.69	112.98
3	B	601	A1IIQ	C04-N06-N07	5.83	109.36	104.35
4	B	602	GN1	C4-C3-C2	-5.06	102.93	110.34
3	B	601	A1IIQ	C08-N07-C09	-3.57	124.63	128.91
5	B	603	A1IIG	C01-C05-C06	3.06	115.79	110.72
5	B	603	A1IIG	C07-C06-S10	-2.92	104.53	111.36
5	B	603	A1IIG	C07-C06-C05	-2.78	125.71	128.98
4	B	602	GN1	C1-O5-C5	2.43	118.46	113.69
4	B	602	GN1	O5-C1-O1	-2.36	108.28	111.36
3	B	601	A1IIQ	C05-C04-N06	2.33	124.81	119.78
4	B	602	GN1	C2-N2-C7	-2.28	117.63	123.18
5	B	603	A1IIG	O03-C02-C01	2.07	120.70	114.07
4	B	602	GN1	C8-C7-N2	2.05	119.58	116.10

There are no chirality outliers.

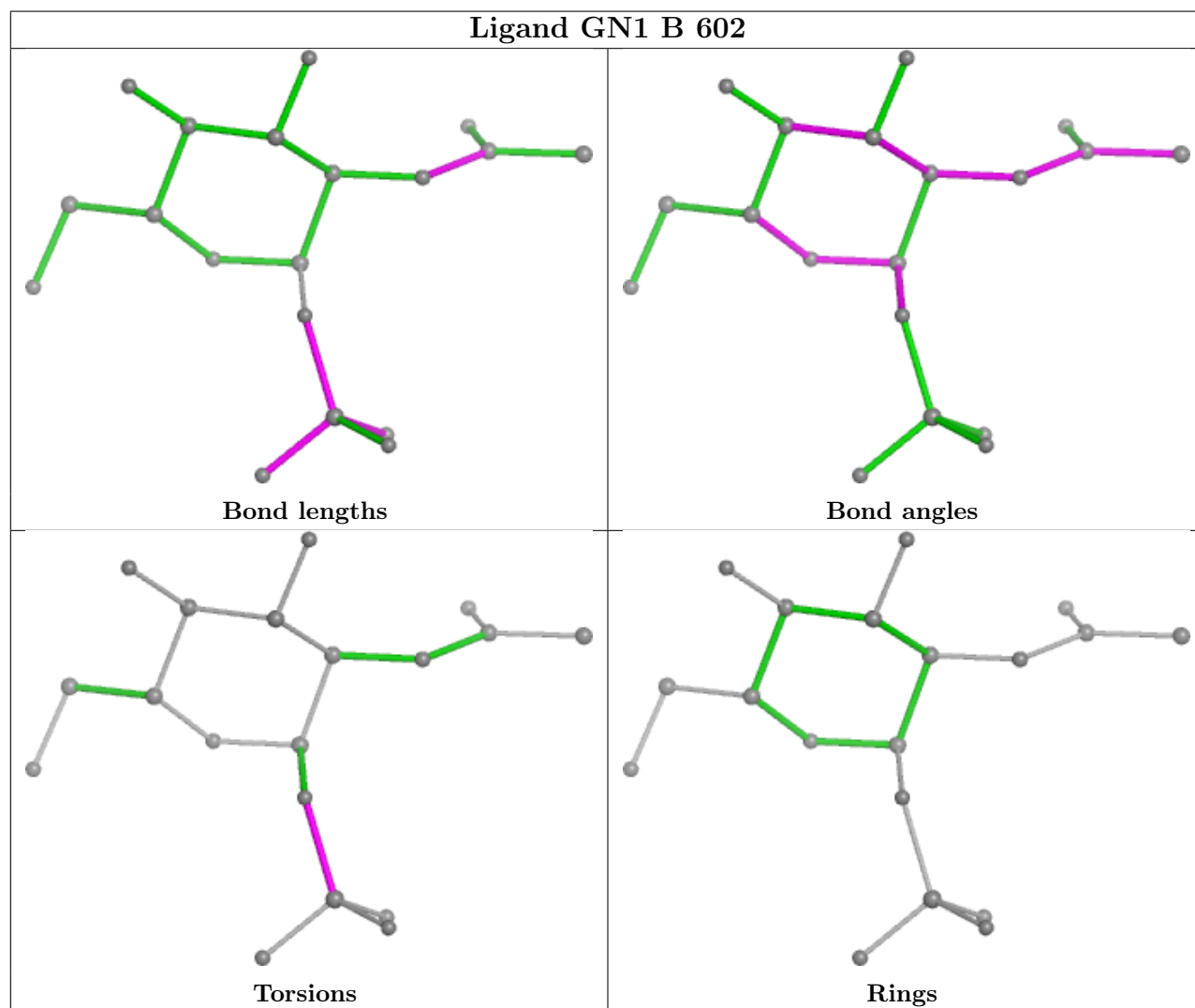
All (5) torsion outliers are listed below:

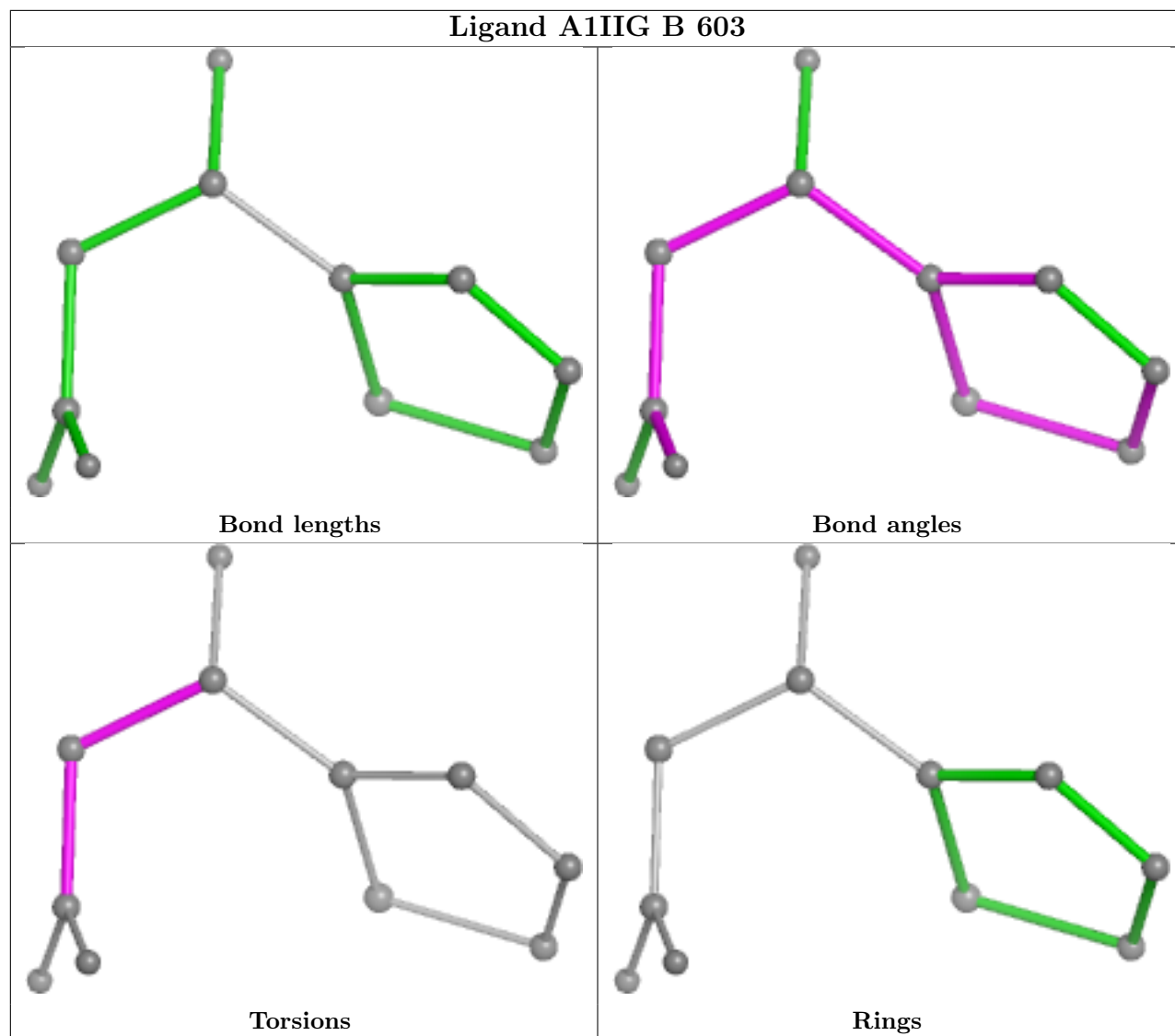
Mol	Chain	Res	Type	Atoms
5	B	603	A1IIG	C02-C01-C05-C06
5	B	603	A1IIG	C02-C01-C05-N11
5	B	603	A1IIG	C05-C01-C02-O04
5	B	603	A1IIG	C05-C01-C02-O03
4	B	602	GN1	C1-O1-P-OP3

There are no ring outliers.

No monomer is involved in short contacts.

The following is a two-dimensional graphical depiction of Mogul quality analysis of bond lengths, bond angles, torsion angles, and ring geometry for all instances of the Ligand of Interest. In addition, ligands with molecular weight > 250 and outliers as shown on the validation Tables will also be included. For torsion angles, if less than 5% of the Mogul distribution of torsion angles is within 10 degrees of the torsion angle in question, then that torsion angle is considered an outlier. Any bond that is central to one or more torsion angles identified as an outlier by Mogul will be highlighted in the graph. For rings, the root-mean-square deviation (RMSD) between the ring in question and similar rings identified by Mogul is calculated over all ring torsion angles. If the average RMSD is greater than 60 degrees and the minimal RMSD between the ring in question and any Mogul-identified rings is also greater than 60 degrees, then that ring is considered an outlier. The outliers are highlighted in purple. The color gray indicates Mogul did not find sufficient equivalents in the CSD to analyse the geometry.





5.7 Other polymers [i](#)

There are no such residues in this entry.

5.8 Polymer linkage issues [i](#)

There are no chain breaks in this entry.

6 Fit of model and data

6.1 Protein, DNA and RNA chains

In the following table, the column labelled ‘#RSRZ > 2’ contains the number (and percentage) of RSRZ outliers, followed by percent RSRZ outliers for the chain as percentile scores relative to all X-ray entries and entries of similar resolution. The OWAB column contains the minimum, median, 95th percentile and maximum values of the occupancy-weighted average B-factor per residue. The column labelled ‘Q < 0.9’ lists the number of (and percentage) of residues with an average occupancy less than 0.9.

Mol	Chain	Analysed	<RSRZ>	#RSRZ>2		OWAB(Å ²)	Q<0.9
1	B	466/484 (96%)	0.03	23 (4%)	36 42	13, 25, 49, 77	5 (1%)
2	A	455/484 (94%)	0.28	24 (5%)	33 38	13, 31, 52, 76	5 (1%)
All	All	921/968 (95%)	0.15	47 (5%)	34 39	13, 28, 50, 77	10 (1%)

All (47) RSRZ outliers are listed below:

Mol	Chain	Res	Type	RSRZ
2	A	401	PRO	6.2
1	B	140	THR	5.1
2	A	91	PRO	4.5
1	B	393	GLY	4.2
1	B	470	ILE	4.1
1	B	392	THR	4.0
1	B	139	GLY	3.7
1	B	391	GLY	3.7
1	B	137	GLY	3.6
1	B	476	VAL	3.3
1	B	389	LYS	3.3
2	A	140	THR	3.2
2	A	145	SER	3.2
1	B	138	GLN	3.1
1	B	143	GLY	2.9
1	B	398	PRO	2.9
2	A	142	LEU	2.8
1	B	141	ARG	2.8
2	A	139	GLY	2.8
1	B	92	ALA	2.8
1	B	390	GLU	2.8
2	A	473	GLY	2.7
2	A	194	GLY	2.7
2	A	26	GLY	2.6

Continued on next page...

Continued from previous page...

Mol	Chain	Res	Type	RSRZ
2	A	476	VAL	2.5
1	B	50	PHE	2.5
2	A	100	ILE	2.5
2	A	136	GLY	2.5
1	B	347	ASP	2.4
2	A	333	ILE	2.4
2	A	347	ASP	2.4
1	B	386	PRO	2.3
2	A	84	PRO	2.3
1	B	382	ARG	2.2
2	A	470	ILE	2.2
1	B	85	PRO	2.2
2	A	27	PRO	2.2
1	B	267[A]	LYS	2.2
2	A	371	LEU	2.2
2	A	311	ALA	2.1
1	B	471	THR	2.1
2	A	471	THR	2.1
2	A	64	HIS	2.1
2	A	55	GLN	2.0
2	A	452	ARG	2.0
1	B	142	LEU	2.0
2	A	93	SER	2.0

6.2 Non-standard residues in protein, DNA, RNA chains ⓘ

In the following table, the Atoms column lists the number of modelled atoms in the group and the number defined in the chemical component dictionary. The B-factors column lists the minimum, median, 95th percentile and maximum values of B factors of atoms in the group. The column labelled 'Q< 0.9' lists the number of atoms with occupancy less than 0.9.

Mol	Type	Chain	Res	Atoms	RSCC	RSR	B-factors(Å ²)	Q<0.9
1	YCM	B	277	10/11	0.98	0.08	16,20,32,35	0

6.3 Carbohydrates ⓘ

There are no oligosaccharides in this entry.

6.4 Ligands

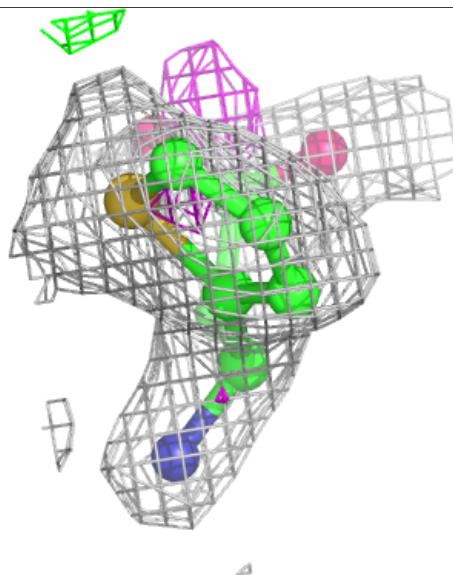
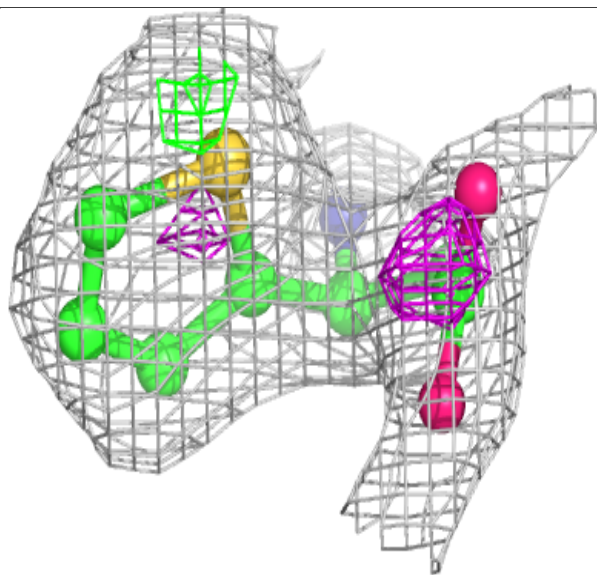
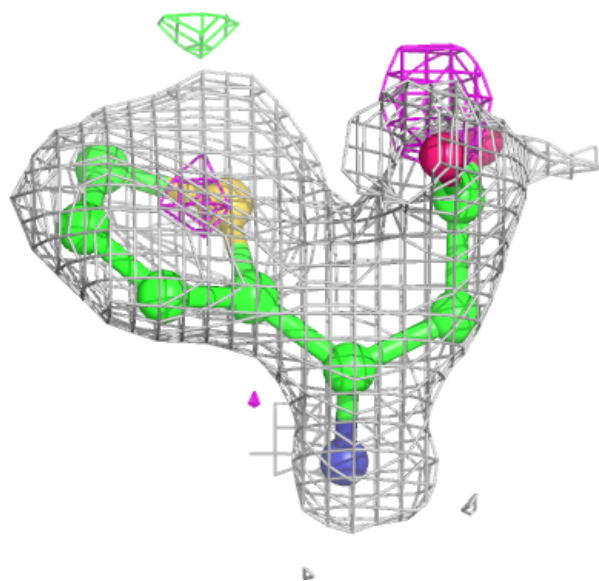
In the following table, the Atoms column lists the number of modelled atoms in the group and the number defined in the chemical component dictionary. The B-factors column lists the minimum, median, 95th percentile and maximum values of B factors of atoms in the group. The column labelled 'Q< 0.9' lists the number of atoms with occupancy less than 0.9.

Mol	Type	Chain	Res	Atoms	RSCC	RSR	B-factors(\AA^2)	Q<0.9
5	A1IIG	B	603	11/11	0.88	0.11	28,40,50,52	0
3	A1IIQ	B	601	10/10	0.95	0.07	16,19,20,20	0
4	GN1	B	602	19/19	0.98	0.05	16,21,27,29	0

The following is a graphical depiction of the model fit to experimental electron density of all instances of the Ligand of Interest. In addition, ligands with molecular weight > 250 and outliers as shown on the geometry validation Tables will also be included. Each fit is shown from different orientation to approximate a three-dimensional view.

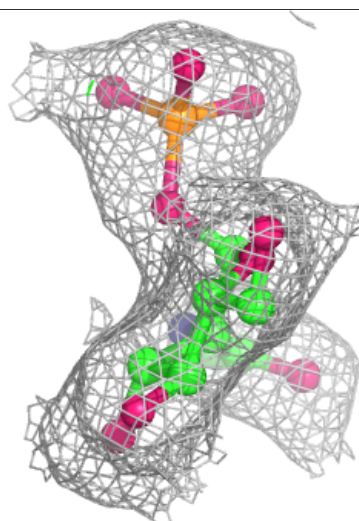
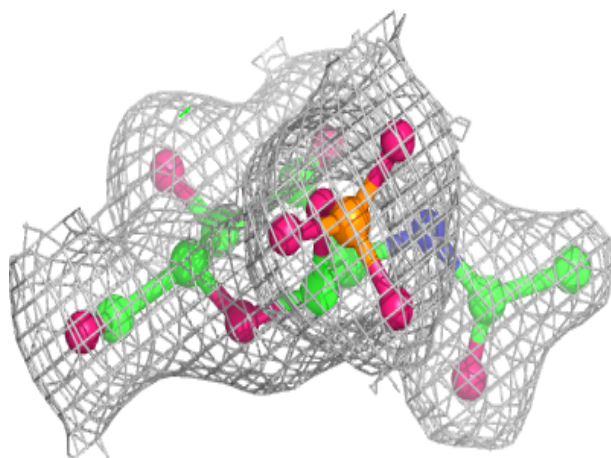
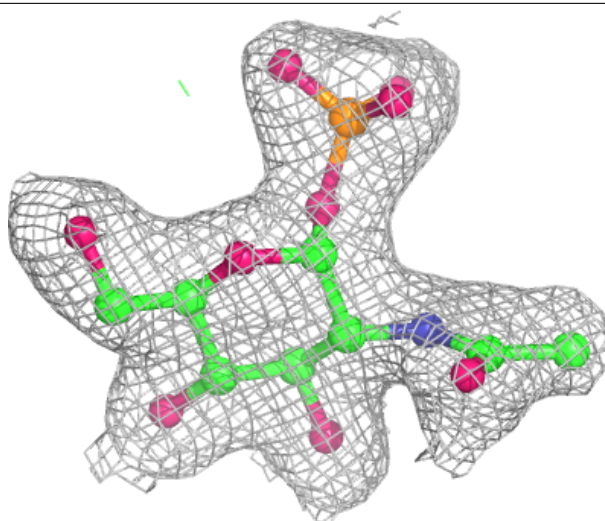
Electron density around A1IIG B 603:

$2mF_o-DF_c$ (at 0.7 rmsd) in gray
 mF_o-DF_c (at 3 rmsd) in purple (negative)
and green (positive)



Electron density around GN1 B 602:

$2mF_o-DF_c$ (at 0.7 rmsd) in gray
 mF_o-DF_c (at 3 rmsd) in purple (negative)
and green (positive)



6.5 Other polymers [i](#)

There are no such residues in this entry.