



Full wwPDB X-ray Structure Validation Report ⓘ

Jul 10, 2025 – 04:10 pm BST

PDB ID : 9GNN / pdb_00009gnn
Title : Structure of SENP5 in complex with SUMO2
Authors : Reverter, D.; Li, Y.; Sanchez-Alba, L.
Deposited on : 2024-09-03
Resolution : 2.36 Å(reported)

This is a Full wwPDB X-ray Structure Validation Report for a publicly released PDB entry.

We welcome your comments at validation@mail.wwpdb.org

A user guide is available at

<https://www.wwpdb.org/validation/2017/XrayValidationReportHelp>

with specific help available everywhere you see the ⓘ symbol.

The types of validation reports are described at

<http://www.wwpdb.org/validation/2017/FAQs#types>.

The following versions of software and data (see [references ⓘ](#)) were used in the production of this report:

MolProbity	:	4-5-2 with Phenix2.0rc1
Mogul	:	1.8.4, CSD as541be (2020)
Xtriage (Phenix)	:	2.0rc1
EDS	:	3.0
Percentile statistics	:	20231227.v01 (using entries in the PDB archive December 27th 2023)
CCP4	:	9.0.006 (Gargrove)
Density-Fitness	:	1.0.12
Ideal geometry (proteins)	:	Engh & Huber (2001)
Ideal geometry (DNA, RNA)	:	Parkinson et al. (1996)
Validation Pipeline (wwPDB-VP)	:	2.44

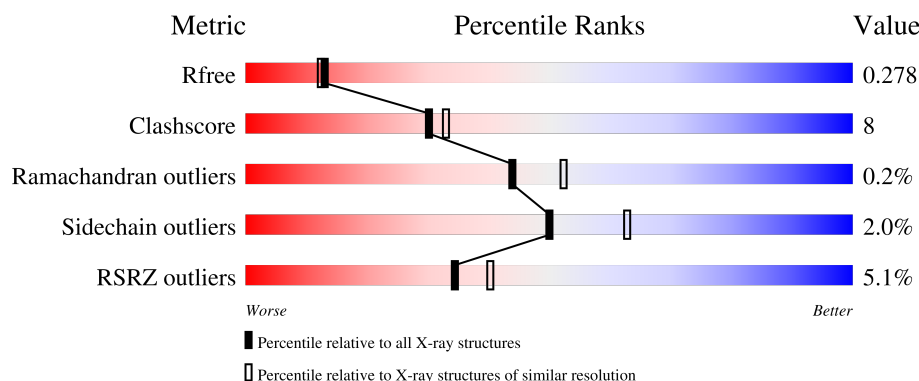
1 Overall quality at a glance

The following experimental techniques were used to determine the structure:

X-RAY DIFFRACTION

The reported resolution of this entry is 2.36 Å.

Percentile scores (ranging between 0-100) for global validation metrics of the entry are shown in the following graphic. The table shows the number of entries on which the scores are based.



Metric	Whole archive (#Entries)	Similar resolution (#Entries, resolution range(Å))
R_{free}	164625	1460 (2.36-2.36)
Clashscore	180529	1571 (2.36-2.36)
Ramachandran outliers	177936	1559 (2.36-2.36)
Sidechain outliers	177891	1559 (2.36-2.36)
RSRZ outliers	164620	1460 (2.36-2.36)

The table below summarises the geometric issues observed across the polymeric chains and their fit to the electron density. The red, orange, yellow and green segments of the lower bar indicate the fraction of residues that contain outliers for ≥ 3 , 2, 1 and 0 types of geometric quality criteria respectively. A grey segment represents the fraction of residues that are not modelled. The numeric value for each fraction is indicated below the corresponding segment, with a dot representing fractions $\leq 5\%$. The upper red bar (where present) indicates the fraction of residues that have poor fit to the electron density. The numeric value is given above the bar.

Mol	Chain	Length	Quality of chain
1	A	207	<div> <div>6%</div> <div>71%</div> <div>20%</div> <div>8%</div> </div>
1	B	207	<div> <div>2%</div> <div>72%</div> <div>18%</div> <div>8%</div> </div>
2	C	79	<div> <div>0%</div> <div>81%</div> <div>16%</div> <div>0%</div> </div>
2	D	79	<div> <div>11%</div> <div>75%</div> <div>22%</div> <div>0%</div> </div>

2 Entry composition

There are 4 unique types of molecules in this entry. The entry contains 4428 atoms, of which 0 are hydrogens and 0 are deuteriums.

In the tables below, the ZeroOcc column contains the number of atoms modelled with zero occupancy, the AltConf column contains the number of residues with at least one atom in alternate conformation and the Trace column contains the number of residues modelled with at most 2 atoms.

- Molecule 1 is a protein called Sentrin-specific protease 5.

Mol	Chain	Residues	Atoms					ZeroOcc	AltConf	Trace
1	A	190	Total	C	N	O	S	0	0	0
			1577	1013	270	281	13			
1	B	190	Total	C	N	O	S	0	0	0
			1577	1013	270	281	13			

There are 38 discrepancies between the modelled and reference sequences:

Chain	Residue	Modelled	Actual	Comment	Reference
A	549	HIS	-	expression tag	UNP Q96HI0
A	550	HIS	-	expression tag	UNP Q96HI0
A	551	HIS	-	expression tag	UNP Q96HI0
A	552	HIS	-	expression tag	UNP Q96HI0
A	553	HIS	-	expression tag	UNP Q96HI0
A	554	HIS	-	expression tag	UNP Q96HI0
A	555	SER	-	expression tag	UNP Q96HI0
A	556	SER	-	expression tag	UNP Q96HI0
A	557	GLY	-	expression tag	UNP Q96HI0
A	558	LEU	-	expression tag	UNP Q96HI0
A	559	VAL	-	expression tag	UNP Q96HI0
A	560	PRO	-	expression tag	UNP Q96HI0
A	561	ARG	-	expression tag	UNP Q96HI0
A	562	GLY	-	expression tag	UNP Q96HI0
A	563	SER	-	expression tag	UNP Q96HI0
A	564	HIS	-	expression tag	UNP Q96HI0
A	565	MET	-	expression tag	UNP Q96HI0
A	566	ALA	-	expression tag	UNP Q96HI0
A	567	SER	-	expression tag	UNP Q96HI0
B	549	HIS	-	expression tag	UNP Q96HI0
B	550	HIS	-	expression tag	UNP Q96HI0
B	551	HIS	-	expression tag	UNP Q96HI0
B	552	HIS	-	expression tag	UNP Q96HI0
B	553	HIS	-	expression tag	UNP Q96HI0
B	554	HIS	-	expression tag	UNP Q96HI0

Continued on next page...

Continued from previous page...

Chain	Residue	Modelled	Actual	Comment	Reference
B	555	SER	-	expression tag	UNP Q96HI0
B	556	SER	-	expression tag	UNP Q96HI0
B	557	GLY	-	expression tag	UNP Q96HI0
B	558	LEU	-	expression tag	UNP Q96HI0
B	559	VAL	-	expression tag	UNP Q96HI0
B	560	PRO	-	expression tag	UNP Q96HI0
B	561	ARG	-	expression tag	UNP Q96HI0
B	562	GLY	-	expression tag	UNP Q96HI0
B	563	SER	-	expression tag	UNP Q96HI0
B	564	HIS	-	expression tag	UNP Q96HI0
B	565	MET	-	expression tag	UNP Q96HI0
B	566	ALA	-	expression tag	UNP Q96HI0
B	567	SER	-	expression tag	UNP Q96HI0

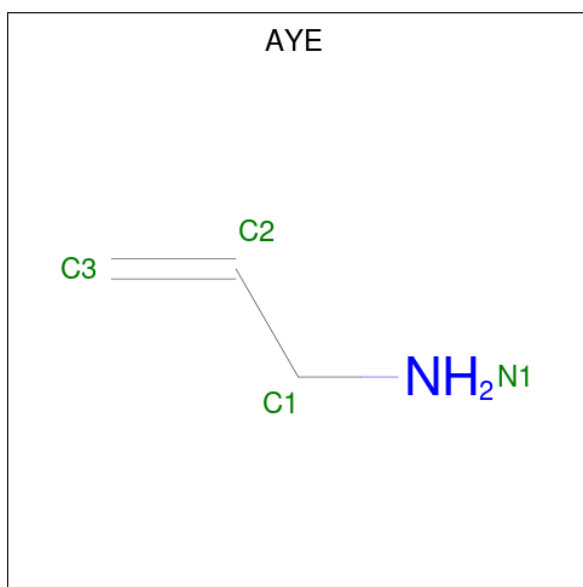
- Molecule 2 is a protein called Small ubiquitin-related modifier 3.

Mol	Chain	Residues	Atoms					ZeroOcc	AltConf	Trace
2	C	77	Total 621	C 384	N 112	O 121	S 4	0	0	0
2	D	77	Total 621	C 384	N 112	O 121	S 4	0	0	0

There are 2 discrepancies between the modelled and reference sequences:

Chain	Residue	Modelled	Actual	Comment	Reference
C	14	MET	-	initiating methionine	UNP P55854
D	14	MET	-	initiating methionine	UNP P55854

- Molecule 3 is prop-2-en-1-amine (CCD ID: AYE) (formula: C₃H₇N).



Mol	Chain	Residues	Atoms			ZeroOcc	AltConf
3	A	1	Total	C	N	0	0
			4	3	1		
3	B	1	Total	C	N	0	0
			4	3	1		

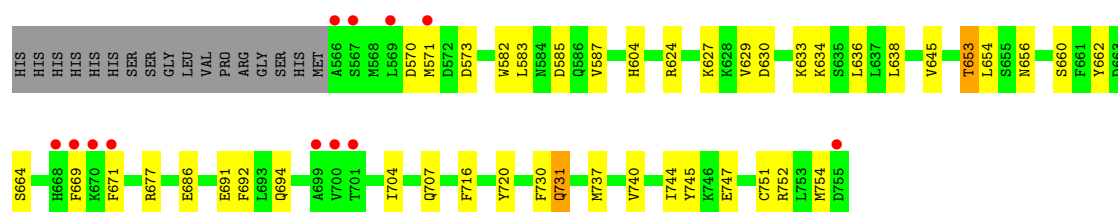
- Molecule 4 is water.

Mol	Chain	Residues	Atoms		ZeroOcc	AltConf
4	A	13	Total	O	0	0
			13	13		
4	B	8	Total	O	0	0
			8	8		
4	C	3	Total	O	0	0
			3	3		

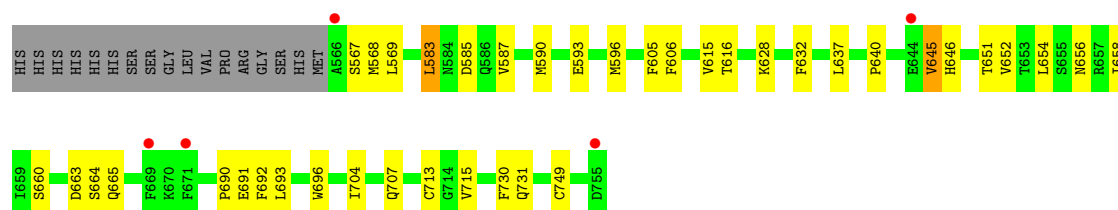
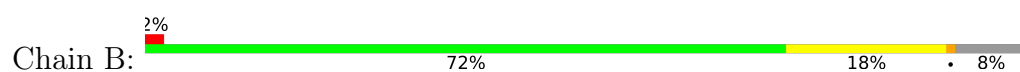
3 Residue-property plots [i](#)

These plots are drawn for all protein, RNA, DNA and oligosaccharide chains in the entry. The first graphic for a chain summarises the proportions of the various outlier classes displayed in the second graphic. The second graphic shows the sequence view annotated by issues in geometry and electron density. Residues are color-coded according to the number of geometric quality criteria for which they contain at least one outlier: green = 0, yellow = 1, orange = 2 and red = 3 or more. A red dot above a residue indicates a poor fit to the electron density ($RSRZ > 2$). Stretches of 2 or more consecutive residues without any outlier are shown as a green connector. Residues present in the sample, but not in the model, are shown in grey.

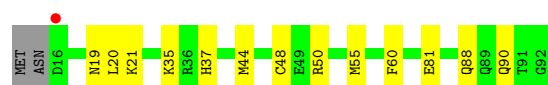
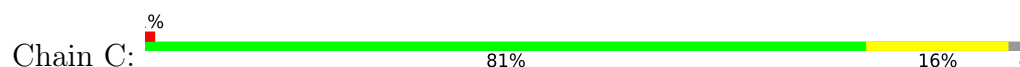
- Molecule 1: Sentrin-specific protease 5



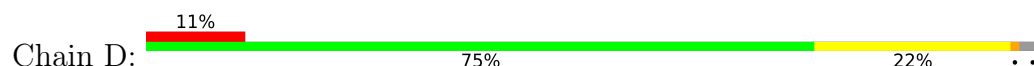
- Molecule 1: Sentrin-specific protease 5



- Molecule 2: Small ubiquitin-related modifier 3



- Molecule 2: Small ubiquitin-related modifier 3



4 Data and refinement statistics

Property	Value	Source
Space group	P 21 21 21	Depositor
Cell constants a, b, c, α , β , γ	66.16Å 87.90Å 116.68Å 90.00° 90.00° 90.00°	Depositor
Resolution (Å)	48.61 – 2.36 48.61 – 2.36	Depositor EDS
% Data completeness (in resolution range)	82.0 (48.61-2.36) 82.0 (48.61-2.36)	Depositor EDS
R_{merge}	(Not available)	Depositor
R_{sym}	(Not available)	Depositor
$\langle I/\sigma(I) \rangle$ ¹	0.99 (at 2.37Å)	Xtriage
Refinement program	PHENIX 1.19.2_4158	Depositor
R, R_{free}	0.213 , 0.283 0.214 , 0.278	Depositor DCC
R_{free} test set	1438 reflections (4.94%)	wwPDB-VP
Wilson B-factor (Å ²)	49.5	Xtriage
Anisotropy	0.032	Xtriage
Bulk solvent k_{sol} (e/Å ³), B_{sol} (Å ²)	0.33 , 30.8	EDS
L-test for twinning ²	$\langle L \rangle = 0.50$, $\langle L^2 \rangle = 0.34$	Xtriage
Estimated twinning fraction	No twinning to report.	Xtriage
F_o, F_c correlation	0.94	EDS
Total number of atoms	4428	wwPDB-VP
Average B, all atoms (Å ²)	46.0	wwPDB-VP

Xtriage's analysis on translational NCS is as follows: *The largest off-origin peak in the Patterson function is 4.36% of the height of the origin peak. No significant pseudotranslation is detected.*

¹Intensities estimated from amplitudes.

²Theoretical values of $\langle |L| \rangle$, $\langle L^2 \rangle$ for acentric reflections are 0.5, 0.333 respectively for untwinned datasets, and 0.375, 0.2 for perfectly twinned datasets.

5 Model quality

5.1 Standard geometry

Bond lengths and bond angles in the following residue types are not validated in this section: AYE

The Z score for a bond length (or angle) is the number of standard deviations the observed value is removed from the expected value. A bond length (or angle) with $|Z| > 5$ is considered an outlier worth inspection. RMSZ is the root-mean-square of all Z scores of the bond lengths (or angles).

Mol	Chain	Bond lengths		Bond angles	
		RMSZ	$\# Z > 5$	RMSZ	$\# Z > 5$
1	A	0.39	0/1613	0.65	3/2174 (0.1%)
1	B	0.38	0/1613	0.59	0/2174
2	C	0.34	0/630	0.56	0/845
2	D	0.34	0/630	0.54	0/845
All	All	0.37	0/4486	0.60	3/6038 (0.0%)

There are no bond length outliers.

All (3) bond angle outliers are listed below:

Mol	Chain	Res	Type	Atoms	Z	Observed(°)	Ideal(°)
1	A	730	PHE	N-CA-C	-7.81	97.90	109.15
1	A	731	GLN	N-CA-C	-5.13	100.02	108.49
1	A	731	GLN	N-CA-CB	5.01	118.89	111.23

There are no chirality outliers.

There are no planarity outliers.

5.2 Too-close contacts

In the following table, the Non-H and H(model) columns list the number of non-hydrogen atoms and hydrogen atoms in the chain respectively. The H(added) column lists the number of hydrogen atoms added and optimized by MolProbity. The Clashes column lists the number of clashes within the asymmetric unit, whereas Symm-Clashes lists symmetry-related clashes.

Mol	Chain	Non-H	H(model)	H(added)	Clashes	Symm-Clashes
1	A	1577	0	1574	29	0
1	B	1577	0	1574	24	0
2	C	621	0	609	13	0
2	D	621	0	609	14	0

Continued on next page...

Continued from previous page...

Mol	Chain	Non-H	H(model)	H(added)	Clashes	Symm-Clashes
3	A	4	0	5	1	0
3	B	4	0	4	1	0
4	A	13	0	0	1	0
4	B	8	0	0	1	0
4	C	3	0	0	1	0
All	All	4428	0	4375	73	0

The all-atom clashscore is defined as the number of clashes found per 1000 atoms (including hydrogen atoms). The all-atom clashscore for this structure is 8.

All (73) close contacts within the same asymmetric unit are listed below, sorted by their clash magnitude.

Atom-1	Atom-2	Interatomic distance (Å)	Clash overlap (Å)
2:C:50:ARG:NH1	4:C:201:HOH:O	2.09	0.86
2:D:62:PHE:HB2	2:D:67:ILE:HD11	1.69	0.74
1:A:751:CYS:O	1:A:752:ARG:HG3	1.93	0.69
1:A:585:ASP:HB3	2:C:90:GLN:HE21	1.56	0.68
1:A:634:LYS:O	1:A:654:LEU:HD12	1.95	0.67
1:B:690:PRO:HA	1:B:693:LEU:HD12	1.77	0.66
2:C:50:ARG:NH2	2:D:50:ARG:O	2.30	0.65
1:B:704:ILE:HD11	1:B:730:PHE:CE2	2.33	0.64
1:A:677:ARG:NH1	4:A:901:HOH:O	2.30	0.64
1:B:585:ASP:HB3	2:D:90:GLN:HE21	1.64	0.62
1:B:628:LYS:HG2	1:B:628:LYS:O	1.98	0.62
1:B:615:VAL:HG23	1:B:616:THR:HG23	1.82	0.61
1:B:637:LEU:HB2	1:B:652:VAL:HB	1.82	0.61
1:B:632:PHE:HB3	1:B:692:PHE:CE2	2.37	0.60
1:B:691:GLU:H	1:B:691:GLU:CD	2.10	0.59
1:A:751:CYS:O	1:A:752:ARG:CG	2.51	0.59
1:B:596:MET:HE2	1:B:605:PHE:HB3	1.87	0.57
1:A:571:MET:HE1	1:A:745:TYR:OH	2.06	0.56
1:A:582:TRP:CZ3	1:A:645:VAL:HG22	2.41	0.55
1:A:691:GLU:HG2	1:A:692:PHE:CD2	2.41	0.55
1:A:747:GLU:HG2	1:A:754:MET:H	1.73	0.54
1:B:569:LEU:HG	1:B:590:MET:HG2	1.89	0.54
1:B:590:MET:HE3	1:B:593:GLU:HB2	1.90	0.53
1:B:664:SER:O	1:B:707:GLN:HG2	2.10	0.52
1:A:669:PHE:CE1	1:A:671:PHE:HB3	2.45	0.51
1:A:653:THR:OG1	1:A:656:ASN:OD1	2.29	0.51
1:A:716:PHE:CD1	1:A:737:MET:HE3	2.46	0.51
1:A:636:LEU:HD21	1:A:638:LEU:HD21	1.92	0.51

Continued on next page...

Continued from previous page...

Atom-1	Atom-2	Interatomic distance (Å)	Clash overlap (Å)
1:A:664:SER:O	1:A:707:GLN:HG2	2.11	0.50
1:B:583:LEU:HD13	1:B:587:VAL:HG11	1.95	0.49
1:B:590:MET:HE3	1:B:590:MET:HA	1.95	0.49
2:C:35:LYS:HD3	2:C:37:HIS:H	1.77	0.49
2:C:88:GLN:HE22	2:D:26:ASP:C	2.20	0.48
1:B:731:GLN:NE2	4:B:901:HOH:O	2.46	0.48
1:A:570:ASP:OD2	1:A:573:ASP:N	2.40	0.48
1:B:665:GLN:HG3	1:B:707:GLN:CD	2.40	0.47
2:C:21:LYS:HE3	2:C:81:GLU:HG3	1.96	0.47
1:A:582:TRP:HZ3	1:A:645:VAL:HG22	1.79	0.47
1:B:713:CYS:HB3	3:B:801:AYE:H3A	1.53	0.47
2:D:72:THR:CG2	2:D:75:GLN:H	2.28	0.47
1:B:606:PHE:O	1:B:640:PRO:HD2	2.15	0.46
2:C:44:MET:HE3	2:C:60:PHE:HB2	1.97	0.46
2:C:48:CYS:SG	2:C:55:MET:HG3	2.56	0.46
1:A:624:ARG:O	1:A:627:LYS:HB3	2.16	0.45
2:D:17:HIS:O	2:D:18:ILE:HD13	2.16	0.45
1:B:568:MET:HE1	1:B:749:CYS:O	2.17	0.45
1:B:656:ASN:OD1	1:B:658:ILE:HG12	2.17	0.45
2:C:88:GLN:NE2	2:D:26:ASP:C	2.74	0.44
1:A:731:GLN:OE1	1:A:731:GLN:HA	2.18	0.44
1:A:630:ASP:HB3	1:A:633:LYS:HD2	1.99	0.44
1:A:662:TYR:HD1	1:A:704:ILE:HD13	1.83	0.43
2:C:19:ASN:O	2:C:20:LEU:HD23	2.18	0.43
1:A:630:ASP:OD1	1:A:633:LYS:N	2.51	0.43
1:A:704:ILE:HD12	1:A:720:TYR:CZ	2.54	0.43
1:A:604:HIS:CE1	1:A:629:VAL:HG21	2.53	0.43
1:A:645:VAL:O	3:A:801:AYE:N1	2.52	0.43
2:C:44:MET:HG2	2:C:60:PHE:CD1	2.54	0.42
2:D:60:PHE:O	2:D:61:ARG:HG2	2.19	0.42
1:B:654:LEU:HD23	1:B:696:TRP:HH2	1.84	0.42
2:D:44:MET:HE3	2:D:60:PHE:CD1	2.54	0.42
1:A:585:ASP:CB	2:C:90:GLN:HE21	2.30	0.42
1:B:568:MET:O	1:B:569:LEU:HB2	2.20	0.42
2:D:41:SER:HB2	2:D:69:GLU:HB3	2.02	0.42
2:D:40:LEU:HG	2:D:73:PRO:HD3	2.01	0.41
1:A:583:LEU:HD13	1:A:587:VAL:HG11	2.02	0.41
1:A:686:GLU:N	1:A:686:GLU:OE2	2.54	0.41
2:C:88:GLN:NE2	2:D:26:ASP:O	2.49	0.41
2:D:44:MET:HB3	2:D:55:MET:HE1	2.02	0.41
1:A:694:GLN:CD	1:A:694:GLN:N	2.79	0.41

Continued on next page...

Continued from previous page...

Atom-1	Atom-2	Interatomic distance (Å)	Clash overlap (Å)
1:B:628:LYS:O	1:B:628:LYS:CG	2.66	0.40
1:A:740:VAL:O	1:A:744:ILE:HG13	2.21	0.40
1:B:646:HIS:NE2	1:B:663:ASP:OD1	2.44	0.40
2:D:40:LEU:O	2:D:44:MET:HG3	2.21	0.40

There are no symmetry-related clashes.

5.3 Torsion angles [i](#)

5.3.1 Protein backbone [i](#)

In the following table, the Percentiles column shows the percent Ramachandran outliers of the chain as a percentile score with respect to all X-ray entries followed by that with respect to entries of similar resolution.

The Analysed column shows the number of residues for which the backbone conformation was analysed, and the total number of residues.

Mol	Chain	Analysed	Favoured	Allowed	Outliers	Percentiles	
1	A	188/207 (91%)	181 (96%)	7 (4%)	0	100	100
1	B	188/207 (91%)	178 (95%)	9 (5%)	1 (0%)	25	28
2	C	75/79 (95%)	73 (97%)	2 (3%)	0	100	100
2	D	75/79 (95%)	74 (99%)	1 (1%)	0	100	100
All	All	526/572 (92%)	506 (96%)	19 (4%)	1 (0%)	44	52

All (1) Ramachandran outliers are listed below:

Mol	Chain	Res	Type
1	B	645	VAL

5.3.2 Protein sidechains [i](#)

In the following table, the Percentiles column shows the percent sidechain outliers of the chain as a percentile score with respect to all X-ray entries followed by that with respect to entries of similar resolution.

The Analysed column shows the number of residues for which the sidechain conformation was analysed, and the total number of residues.

Mol	Chain	Analysed	Rotameric	Outliers	Percentiles	
1	A	177/192 (92%)	175 (99%)	2 (1%)	70	81
1	B	177/192 (92%)	171 (97%)	6 (3%)	32	41
2	C	69/71 (97%)	69 (100%)	0	100	100
2	D	69/71 (97%)	67 (97%)	2 (3%)	37	48
All	All	492/526 (94%)	482 (98%)	10 (2%)	50	63

All (10) residues with a non-rotameric sidechain are listed below:

Mol	Chain	Res	Type
1	A	653	THR
1	A	660	SER
1	B	567	SER
1	B	583	LEU
1	B	645	VAL
1	B	651	THR
1	B	660	SER
1	B	715	VAL
2	D	41	SER
2	D	77	GLU

Sometimes sidechains can be flipped to improve hydrogen bonding and reduce clashes. All (7) such sidechains are listed below:

Mol	Chain	Res	Type
1	A	580	GLN
1	A	728	GLN
2	C	51	GLN
2	C	90	GLN
2	D	51	GLN
2	D	65	GLN
2	D	90	GLN

5.3.3 RNA ⓘ

There are no RNA molecules in this entry.

5.4 Non-standard residues in protein, DNA, RNA chains ⓘ

There are no non-standard protein/DNA/RNA residues in this entry.

5.5 Carbohydrates [i](#)

There are no oligosaccharides in this entry.

5.6 Ligand geometry [i](#)

2 ligands are modelled in this entry.

In the following table, the Counts columns list the number of bonds (or angles) for which Mogul statistics could be retrieved, the number of bonds (or angles) that are observed in the model and the number of bonds (or angles) that are defined in the Chemical Component Dictionary. The Link column lists molecule types, if any, to which the group is linked. The Z score for a bond length (or angle) is the number of standard deviations the observed value is removed from the expected value. A bond length (or angle) with $|Z| > 2$ is considered an outlier worth inspection. RMSZ is the root-mean-square of all Z scores of the bond lengths (or angles).

Mol	Type	Chain	Res	Link	Bond lengths			Bond angles		
					Counts	RMSZ	$\# Z > 2$	Counts	RMSZ	$\# Z > 2$
3	AYE	B	801	2,1	3,3,3	0.71	0	1,2,2	1.19	0
3	AYE	A	801	2,1	3,3,3	0.84	0	1,2,2	1.46	0

In the following table, the Chirals column lists the number of chiral outliers, the number of chiral centers analysed, the number of these observed in the model and the number defined in the Chemical Component Dictionary. Similar counts are reported in the Torsion and Rings columns. '-' means no outliers of that kind were identified.

Mol	Type	Chain	Res	Link	Chirals	Torsions	Rings
3	AYE	B	801	2,1	-	0/1/1/1	-
3	AYE	A	801	2,1	-	0/1/1/1	-

There are no bond length outliers.

There are no bond angle outliers.

There are no chirality outliers.

There are no torsion outliers.

There are no ring outliers.

2 monomers are involved in 2 short contacts:

Mol	Chain	Res	Type	Clashes	Symm-Clashes
3	B	801	AYE	1	0
3	A	801	AYE	1	0

5.7 Other polymers

There are no such residues in this entry.

5.8 Polymer linkage issues

There are no chain breaks in this entry.

6 Fit of model and data ⓘ

6.1 Protein, DNA and RNA chains ⓘ

In the following table, the column labelled ‘#RSRZ > 2’ contains the number (and percentage) of RSRZ outliers, followed by percent RSRZ outliers for the chain as percentile scores relative to all X-ray entries and entries of similar resolution. The OWAB column contains the minimum, median, 95th percentile and maximum values of the occupancy-weighted average B-factor per residue. The column labelled ‘Q < 0.9’ lists the number of (and percentage) of residues with an average occupancy less than 0.9.

Mol	Chain	Analysed	<RSRZ>	#RSRZ>2	OWAB(Å ²)	Q<0.9
1	A	190/207 (91%)	0.20	12 (6%) 27 32	25, 42, 67, 74	0
1	B	190/207 (91%)	0.13	5 (2%) 57 63	27, 44, 62, 72	0
2	C	77/79 (97%)	0.31	1 (1%) 74 79	30, 48, 65, 73	0
2	D	77/79 (97%)	0.92	9 (11%) 10 13	33, 57, 83, 97	0
All	All	534/572 (93%)	0.29	27 (5%) 34 40	25, 45, 70, 97	0

All (27) RSRZ outliers are listed below:

Mol	Chain	Res	Type	RSRZ
1	A	669	PHE	4.5
1	A	671	PHE	4.3
2	D	34	ILE	3.9
1	A	699	ALA	3.8
1	A	567	SER	3.7
2	D	47	TYR	3.2
2	D	18	ILE	3.2
1	A	571	MET	3.2
1	B	566	ALA	3.2
1	B	644	GLU	3.1
1	B	755	ASP	2.9
1	A	700	VAL	2.8
2	D	17	HIS	2.8
2	D	16	ASP	2.8
1	A	566	ALA	2.7
2	D	43	LEU	2.6
1	A	668	HIS	2.6
1	A	569	LEU	2.6
2	C	16	ASP	2.6
1	A	670	LYS	2.4
2	D	37	HIS	2.3

Continued on next page...

Continued from previous page...

Mol	Chain	Res	Type	RSRZ
1	A	701	THR	2.2
1	B	671	PHE	2.2
2	D	72	THR	2.1
1	A	755	ASP	2.0
2	D	35	LYS	2.0
1	B	669	PHE	2.0

6.2 Non-standard residues in protein, DNA, RNA chains [i](#)

There are no non-standard protein/DNA/RNA residues in this entry.

6.3 Carbohydrates [i](#)

There are no oligosaccharides in this entry.

6.4 Ligands [i](#)

In the following table, the Atoms column lists the number of modelled atoms in the group and the number defined in the chemical component dictionary. The B-factors column lists the minimum, median, 95th percentile and maximum values of B factors of atoms in the group. The column labelled 'Q< 0.9' lists the number of atoms with occupancy less than 0.9.

Mol	Type	Chain	Res	Atoms	RSCC	RSR	B-factors(\AA^2)	Q<0.9
3	AYE	A	801	4/4	0.95	0.08	35,36,37,40	0
3	AYE	B	801	4/4	0.95	0.09	35,37,39,40	0

6.5 Other polymers [i](#)

There are no such residues in this entry.