



wwPDB X-ray Structure Validation Summary Report ⓘ

Sep 23, 2025 – 01:58 am BST

PDB ID : 9GTT / pdb_00009gtt
Title : Crystal structure of human lysosomal acid-alpha-glucosidase, GAA, in complex with iminosugar compound 4l
Authors : Sulzenbacher, G.; Roig-Zamboni, V.; Moracci, M.; Parenti, G.; Py, S.
Deposited on : 2024-09-18
Resolution : 2.35 Å(reported)

This is a wwPDB X-ray Structure Validation Summary Report for a publicly released PDB entry.

We welcome your comments at validation@mail.wwpdb.org

A user guide is available at

<https://www.wwpdb.org/validation/2017/XrayValidationReportHelp>

with specific help available everywhere you see the ⓘ symbol.

The types of validation reports are described at

<http://www.wwpdb.org/validation/2017/FAQs#types>.

The following versions of software and data (see [references ⓘ](#)) were used in the production of this report:

MolProbity : 4-5-2 with Phenix2.0
Mogul : 1.8.4, CSD as541be (2020)
Xtriage (Phenix) : 2.0
EDS : 3.0
buster-report : 1.1.7 (2018)
Percentile statistics : 20231227.v01 (using entries in the PDB archive December 27th 2023)
CCP4 : 9.0.010 (Gargrove)
Density-Fitness : 1.0.12
Ideal geometry (proteins) : Engh & Huber (2001)
Ideal geometry (DNA, RNA) : Parkinson et al. (1996)
Validation Pipeline (wwPDB-VP) : 2.46

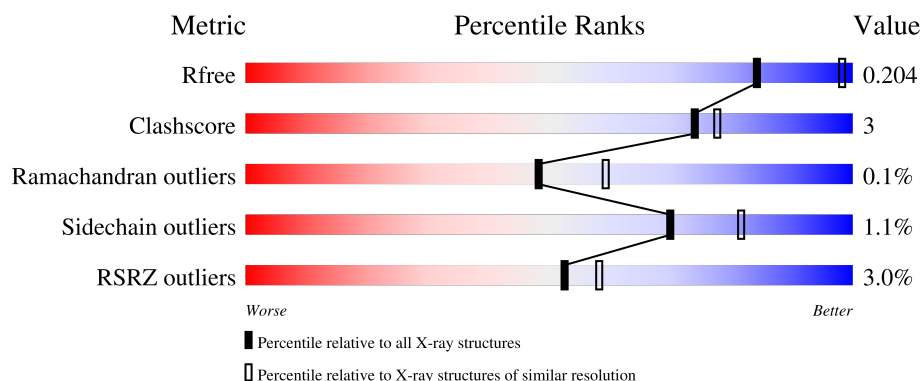
1 Overall quality at a glance

The following experimental techniques were used to determine the structure:

X-RAY DIFFRACTION

The reported resolution of this entry is 2.35 Å.

Percentile scores (ranging between 0-100) for global validation metrics of the entry are shown in the following graphic. The table shows the number of entries on which the scores are based.



Metric	Whole archive (#Entries)	Similar resolution (#Entries, resolution range(Å))
R_{free}	164625	1460 (2.36-2.36)
Clashscore	180529	1571 (2.36-2.36)
Ramachandran outliers	177936	1559 (2.36-2.36)
Sidechain outliers	177891	1559 (2.36-2.36)
RSRZ outliers	164620	1460 (2.36-2.36)

The table below summarises the geometric issues observed across the polymeric chains and their fit to the electron density. The red, orange, yellow and green segments of the lower bar indicate the fraction of residues that contain outliers for ≥ 3 , 2, 1 and 0 types of geometric quality criteria respectively. A grey segment represents the fraction of residues that are not modelled. The numeric value for each fraction is indicated below the corresponding segment, with a dot representing fractions $\leq 5\%$. The upper red bar (where present) indicates the fraction of residues that have poor fit to the electron density. The numeric value is given above the bar.

Mol	Chain	Length	Quality of chain
1	A	952	<div> <div>3%</div> <div>82%</div> <div>7%</div> <div>10%</div> </div>
2	B	3	<div> <div>33%</div> <div>67%</div> </div>
2	F	3	<div> <div>33%</div> <div>67%</div> </div>
3	C	3	<div> <div>33%</div> <div>67%</div> </div>
4	D	2	<div> <div>100%</div> </div>

Continued on next page...

Continued from previous page...

Mol	Chain	Length	Quality of chain
5	E	4	 A horizontal bar chart showing the quality of chain E. The bar is divided into two segments: a green segment on the left representing 25% and a yellow segment on the right representing 75%. The labels '25%' and '75%' are positioned below their respective segments.

2 Entry composition [i](#)

There are 13 unique types of molecules in this entry. The entry contains 7464 atoms, of which 0 are hydrogens and 0 are deuteriums.

In the tables below, the ZeroOcc column contains the number of atoms modelled with zero occupancy, the AltConf column contains the number of residues with at least one atom in alternate conformation and the Trace column contains the number of residues modelled with at most 2 atoms.

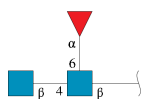
- Molecule 1 is a protein called Lysosomal alpha-glucosidase.

Mol	Chain	Residues	Atoms					ZeroOcc	AltConf	Trace
			Total	C	N	O	S			
1	A	853	6733	4323	1130	1248	32	0	7	0

There are 3 discrepancies between the modelled and reference sequences:

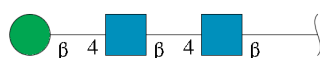
Chain	Residue	Modelled	Actual	Comment	Reference
A	199	ARG	HIS	variant	UNP P10253
A	223	HIS	ARG	variant	UNP P10253
A	780	ILE	VAL	variant	UNP P10253

- Molecule 2 is an oligosaccharide called 2-acetamido-2-deoxy-beta-D-glucopyranose-(1-4)-[alpha-L-fucopyranose-(1-6)]2-acetamido-2-deoxy-beta-D-glucopyranose.



Mol	Chain	Residues	Atoms				ZeroOcc	AltConf	Trace
			Total	C	N	O			
2	B	3	38	22	2	14	0	0	0
2	F	3	38	22	2	14	0	0	0

- Molecule 3 is an oligosaccharide called beta-D-mannopyranose-(1-4)-2-acetamido-2-deoxy-beta-D-glucopyranose-(1-4)-2-acetamido-2-deoxy-beta-D-glucopyranose.



Mol	Chain	Residues	Atoms				ZeroOcc	AltConf	Trace
3	C	3	Total	C	N	O	0	0	0
			39	22	2	15			

- Molecule 4 is an oligosaccharide called 2-acetamido-2-deoxy-beta-D-glucopyranose-(1-4)-2-acetamido-2-deoxy-beta-D-glucopyranose.



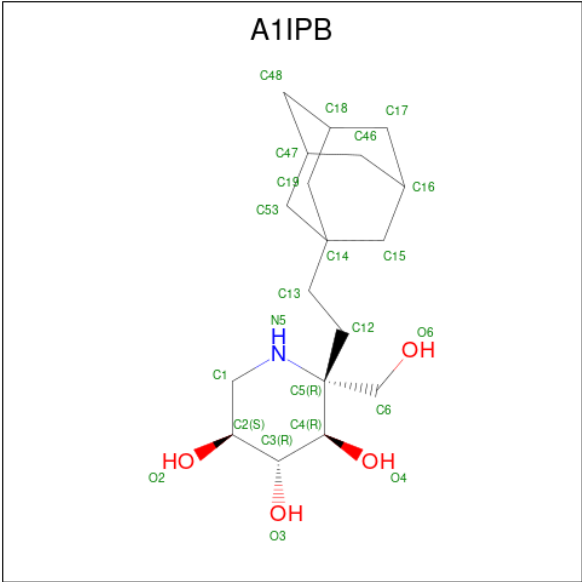
Mol	Chain	Residues	Atoms				ZeroOcc	AltConf	Trace
4	D	2	Total	C	N	O	0	0	0
			28	16	2	10			

- Molecule 5 is an oligosaccharide called alpha-D-mannopyranose-(1-3)-beta-D-mannopyranose-(1-4)-2-acetamido-2-deoxy-beta-D-glucopyranose-(1-4)-2-acetamido-2-deoxy-beta-D-glucopyranose.



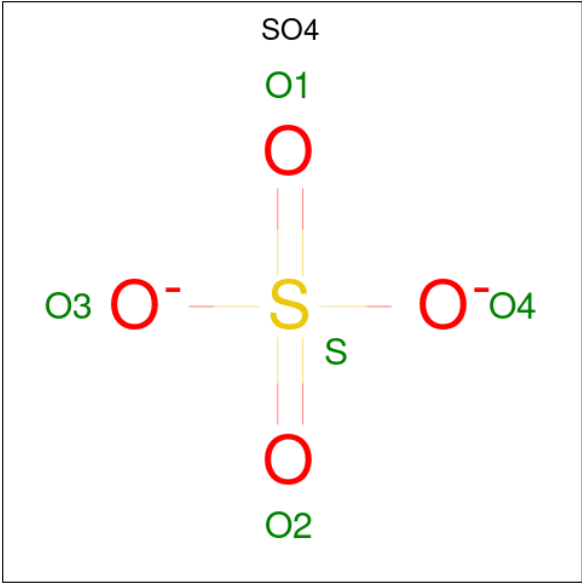
Mol	Chain	Residues	Atoms				ZeroOcc	AltConf	Trace
5	E	4	Total	C	N	O	0	0	0
			50	28	2	20			

- Molecule 6 is (2R,3R,4R,5S)-2-[2-(1-adamantyl)ethyl]-2-(hydroxymethyl)piperidine-3,4,5-triol (CCD ID: A1IPB) (formula: C₁₈H₃₁NO₄).



Mol	Chain	Residues	Atoms				ZeroOcc	AltConf
6	A	1	Total	C	N	O	0	0
			23	18	1	4		

- Molecule 7 is SULFATE ION (CCD ID: SO4) (formula: O₄S).



Mol	Chain	Residues	Atoms			ZeroOcc	AltConf
7	A	1	Total	O	S	0	0
			5	4	1		
7	A	1	Total	O	S	0	0
			5	4	1		
7	A	1	Total	O	S	0	0
			5	4	1		

Continued on next page...

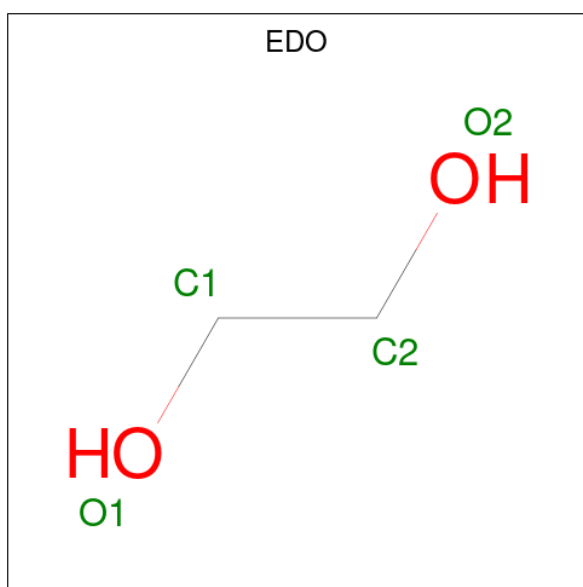
Continued from previous page...

Mol	Chain	Residues	Atoms			ZeroOcc	AltConf
7	A	1	Total	O	S	0	0
			5	4	1		
7	A	1	Total	O	S	0	0
			5	4	1		

- Molecule 8 is CHLORIDE ION (CCD ID: CL) (formula: Cl).

Mol	Chain	Residues	Atoms		ZeroOcc	AltConf
8	A	4	Total	Cl	0	0
			4	4		

- Molecule 9 is 1,2-ETHANEDIOL (CCD ID: EDO) (formula: C₂H₆O₂).



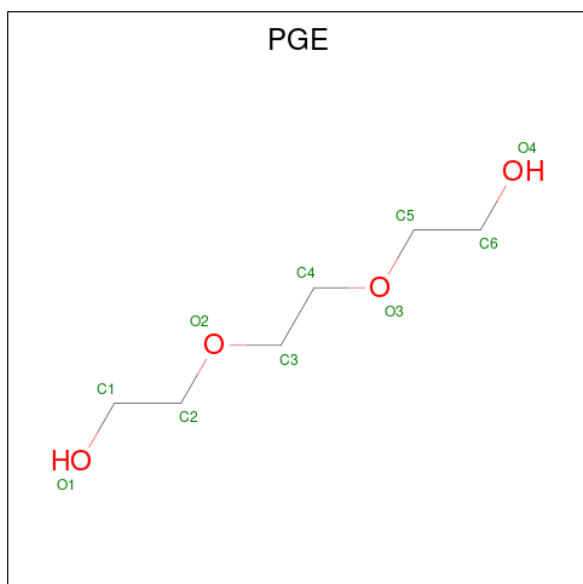
Mol	Chain	Residues	Atoms			ZeroOcc	AltConf
9	A	1	Total	C	O	0	0
			4	2	2		
9	A	1	Total	C	O	0	0
			4	2	2		
9	A	1	Total	C	O	0	0
			4	2	2		
9	A	1	Total	C	O	0	0
			4	2	2		
9	A	1	Total	C	O	0	0
			4	2	2		
9	A	1	Total	C	O	0	0
			4	2	2		

Continued on next page...

Continued from previous page...

Mol	Chain	Residues	Atoms			ZeroOcc	AltConf
9	A	1	Total	C	O	0	0
			4	2	2		
9	A	1	Total	C	O	0	0
			4	2	2		
9	A	1	Total	C	O	0	0
			4	2	2		
9	A	1	Total	C	O	0	0
			4	2	2		

- Molecule 10 is TRIETHYLENE GLYCOL (CCD ID: PGE) (formula: $C_6H_{14}O_4$) (labeled as "Ligand of Interest" by depositor).



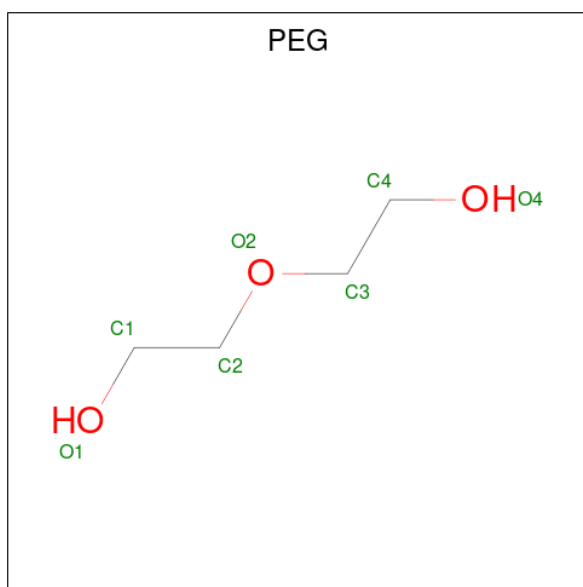
Mol	Chain	Residues	Atoms			ZeroOcc	AltConf
10	A	1	Total	C	O	0	0
			10	6	4		
10	A	1	Total	C	O	0	0
			10	6	4		
10	A	1	Total	C	O	0	0
			10	6	4		

- Molecule 11 is GLYCEROL (CCD ID: GOL) (formula: $C_3H_8O_3$).



Mol	Chain	Residues	Atoms			ZeroOcc	AltConf
11	A	1	Total	C	O	0	0
			6	3	3		
11	A	1	Total	C	O	0	0
			6	3	3		
11	A	1	Total	C	O	0	0
			6	3	3		

- Molecule 12 is DI(HYDROXYETHYL)ETHER (CCD ID: PEG) (formula: $C_4H_{10}O_3$).



Mol	Chain	Residues	Atoms			ZeroOcc	AltConf
12	A	1	Total	C	O	0	0
			7	4	3		

Continued on next page...

Continued from previous page...

Mol	Chain	Residues	Atoms			ZeroOcc	AltConf
12	A	1	Total	C	O	0	0
			7	4	3		

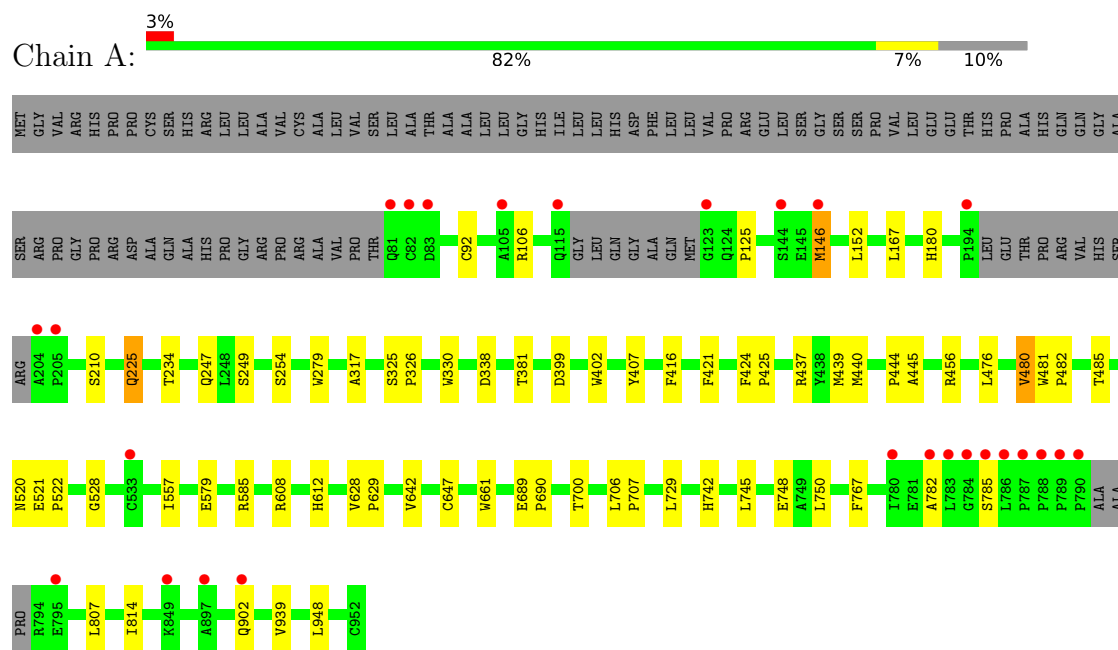
- Molecule 13 is water.

Mol	Chain	Residues	Atoms		ZeroOcc	AltConf
13	A	384	Total	O	0	0
			384	384		

3 Residue-property plots [i](#)

These plots are drawn for all protein, RNA, DNA and oligosaccharide chains in the entry. The first graphic for a chain summarises the proportions of the various outlier classes displayed in the second graphic. The second graphic shows the sequence view annotated by issues in geometry and electron density. Residues are color-coded according to the number of geometric quality criteria for which they contain at least one outlier: green = 0, yellow = 1, orange = 2 and red = 3 or more. A red dot above a residue indicates a poor fit to the electron density ($RSRZ > 2$). Stretches of 2 or more consecutive residues without any outlier are shown as a green connector. Residues present in the sample, but not in the model, are shown in grey.

- Molecule 1: Lysosomal alpha-glucosidase




- Molecule 2: 2-acetamido-2-deoxy-beta-D-glucopyranose-(1-4)-[alpha-L-fucopyranose-(1-6)]2-acetamido-2-deoxy-beta-D-glucopyranose



- Molecule 2: 2-acetamido-2-deoxy-beta-D-glucopyranose-(1-4)-[alpha-L-fucopyranose-(1-6)]2-acetamido-2-deoxy-beta-D-glucopyranose



- Molecule 3: beta-D-mannopyranose-(1-4)-2-acetamido-2-deoxy-beta-D-glucopyranose-(1-4)-2-acetamido-2-deoxy-beta-D-glucopyranose

Chain C:  33% 67%

NAG1
NAG2
BMA3

- Molecule 4: 2-acetamido-2-deoxy-beta-D-glucopyranose-(1-4)-2-acetamido-2-deoxy-beta-D-glucopyranose

Chain D:  100%

NAG1
NAG2

- Molecule 5: alpha-D-mannopyranose-(1-3)-beta-D-mannopyranose-(1-4)-2-acetamido-2-deoxy-beta-D-glucopyranose-(1-4)-2-acetamido-2-deoxy-beta-D-glucopyranose

Chain E:  25% 75%

NAG1
NAG2
BMA3
MAN4

4 Data and refinement statistics

Property	Value	Source
Space group	P 21 21 21	Depositor
Cell constants a, b, c, α , β , γ	96.97Å 102.76Å 129.35Å 90.00° 90.00° 90.00°	Depositor
Resolution (Å)	48.53 – 2.35 48.53 – 2.35	Depositor EDS
% Data completeness (in resolution range)	99.6 (48.53-2.35) 99.6 (48.53-2.35)	Depositor EDS
R_{merge}	0.20	Depositor
R_{sym}	(Not available)	Depositor
$\langle I/\sigma(I) \rangle$ ¹	1.14 (at 2.34Å)	Xtriage
Refinement program	REFMAC 5.8.0267	Depositor
R, R_{free}	0.151 , 0.197 0.163 , 0.204	Depositor DCC
R_{free} test set	2714 reflections (1.76%)	wwPDB-VP
Wilson B-factor (Å ²)	33.4	Xtriage
Anisotropy	0.279	Xtriage
Bulk solvent k_{sol} (e/Å ³), B_{sol} (Å ²)	0.36 , 42.7	EDS
L-test for twinning ²	$\langle L \rangle = 0.50$, $\langle L^2 \rangle = 0.33$	Xtriage
Estimated twinning fraction	No twinning to report.	Xtriage
F_o, F_c correlation	0.96	EDS
Total number of atoms	7464	wwPDB-VP
Average B, all atoms (Å ²)	54.0	wwPDB-VP

Xtriage's analysis on translational NCS is as follows: *The largest off-origin peak in the Patterson function is 3.77% of the height of the origin peak. No significant pseudotranslation is detected.*

¹Intensities estimated from amplitudes.

²Theoretical values of $\langle |L| \rangle$, $\langle L^2 \rangle$ for acentric reflections are 0.5, 0.333 respectively for untwinned datasets, and 0.375, 0.2 for perfectly twinned datasets.

5 Model quality [i](#)

5.1 Standard geometry [i](#)

Bond lengths and bond angles in the following residue types are not validated in this section: GOL, BMA, FUC, CL, EDO, PGE, MAN, A1IPB, PEG, SO4, NAG

The Z score for a bond length (or angle) is the number of standard deviations the observed value is removed from the expected value. A bond length (or angle) with $|Z| > 5$ is considered an outlier worth inspection. RMSZ is the root-mean-square of all Z scores of the bond lengths (or angles).

Mol	Chain	Bond lengths		Bond angles	
		RMSZ	$\# Z > 5$	RMSZ	$\# Z > 5$
1	A	0.94	0/6957	1.18	0/9511

Chiral center outliers are detected by calculating the chiral volume of a chiral center and verifying if the center is modelled as a planar moiety or with the opposite hand. A planarity outlier is detected by checking planarity of atoms in a peptide group, atoms in a mainchain group or atoms of a sidechain that are expected to be planar.

Mol	Chain	#Chirality outliers	#Planarity outliers
1	A	0	1

There are no bond length outliers.

There are no bond angle outliers.

There are no chirality outliers.

All (1) planarity outliers are listed below:

Mol	Chain	Res	Type	Group
1	A	748	GLU	Peptide

5.2 Too-close contacts [i](#)

In the following table, the Non-H and H(model) columns list the number of non-hydrogen atoms and hydrogen atoms in the chain respectively. The H(added) column lists the number of hydrogen atoms added and optimized by MolProbity. The Clashes column lists the number of clashes within the asymmetric unit, whereas Symm-Clashes lists symmetry-related clashes.

Mol	Chain	Non-H	H(model)	H(added)	Clashes	Symm-Clashes
1	A	6733	0	6520	39	0
2	B	38	0	34	0	0

Continued on next page...

Continued from previous page...

Mol	Chain	Non-H	H(model)	H(added)	Clashes	Symm-Clashes
2	F	38	0	34	1	0
3	C	39	0	34	0	0
4	D	28	0	25	0	0
5	E	50	0	43	0	0
6	A	23	0	0	0	0
7	A	25	0	0	1	0
8	A	4	0	0	0	0
9	A	40	0	60	2	0
10	A	30	0	42	0	0
11	A	18	0	24	5	0
12	A	14	0	20	0	0
13	A	384	0	0	5	0
All	All	7464	0	6836	42	0

The all-atom clashscore is defined as the number of clashes found per 1000 atoms (including hydrogen atoms). The all-atom clashscore for this structure is 3.

The worst 5 of 42 close contacts within the same asymmetric unit are listed below, sorted by their clash magnitude.

Atom-1	Atom-2	Interatomic distance (Å)	Clash overlap (Å)
1:A:125:PRO:HA	11:A:1022:GOL:H31	1.68	0.76
11:A:1026:GOL:H12	13:A:1162:HOH:O	1.88	0.73
1:A:585:ARG:NH1	13:A:1101:HOH:O	2.24	0.66
1:A:521:GLU:N	1:A:522:PRO:HA	2.14	0.63
1:A:146:MET:HA	1:A:146:MET:HE2	1.83	0.61

There are no symmetry-related clashes.

5.3 Torsion angles [i](#)

5.3.1 Protein backbone [i](#)

In the following table, the Percentiles column shows the percent Ramachandran outliers of the chain as a percentile score with respect to all X-ray entries followed by that with respect to entries of similar resolution.

The Analysed column shows the number of residues for which the backbone conformation was analysed, and the total number of residues.

Mol	Chain	Analysed	Favoured	Allowed	Outliers	Percentiles
1	A	852/952 (90%)	827 (97%)	24 (3%)	1 (0%)	48 59

All (1) Ramachandran outliers are listed below:

Mol	Chain	Res	Type
1	A	480	VAL

5.3.2 Protein sidechains ⓘ

In the following table, the Percentiles column shows the percent sidechain outliers of the chain as a percentile score with respect to all X-ray entries followed by that with respect to entries of similar resolution.

The Analysed column shows the number of residues for which the sidechain conformation was analysed, and the total number of residues.

Mol	Chain	Analysed	Rotameric	Outliers	Percentiles
1	A	735/806 (91%)	727 (99%)	8 (1%)	70 81

5 of 8 residues with a non-rotameric sidechain are listed below:

Mol	Chain	Res	Type
1	A	814	ILE
1	A	785	SER
1	A	480	VAL
1	A	440	MET
1	A	729	LEU

Sometimes sidechains can be flipped to improve hydrogen bonding and reduce clashes. 5 of 9 such sidechains are listed below:

Mol	Chain	Res	Type
1	A	693	GLN
1	A	839	GLN
1	A	316	ASN
1	A	352	GLN
1	A	401	GLN

5.3.3 RNA ⓘ

There are no RNA molecules in this entry.

5.4 Non-standard residues in protein, DNA, RNA chains ⓘ

There are no non-standard protein/DNA/RNA residues in this entry.

5.5 Carbohydrates ⓘ

15 monosaccharides are modelled in this entry.

In the following table, the Counts columns list the number of bonds (or angles) for which Mogul statistics could be retrieved, the number of bonds (or angles) that are observed in the model and the number of bonds (or angles) that are defined in the Chemical Component Dictionary. The Link column lists molecule types, if any, to which the group is linked. The Z score for a bond length (or angle) is the number of standard deviations the observed value is removed from the expected value. A bond length (or angle) with $|Z| > 2$ is considered an outlier worth inspection. RMSZ is the root-mean-square of all Z scores of the bond lengths (or angles).

Mol	Type	Chain	Res	Link	Bond lengths			Bond angles		
					Counts	RMSZ	$\# Z > 2$	Counts	RMSZ	$\# Z > 2$
2	NAG	B	1	1,2	14,14,15	0.47	0	17,19,21	1.01	2 (11%)
2	NAG	B	2	2	14,14,15	0.62	0	17,19,21	1.32	2 (11%)
2	FUC	B	3	2	10,10,11	0.67	0	14,14,16	0.78	0
3	NAG	C	1	1,3	14,14,15	0.69	0	17,19,21	1.44	2 (11%)
3	NAG	C	2	3	14,14,15	0.54	0	17,19,21	0.76	0
3	BMA	C	3	3	11,11,12	0.41	0	15,15,17	0.88	1 (6%)
4	NAG	D	1	1,4	14,14,15	0.56	0	17,19,21	0.77	0
4	NAG	D	2	4	14,14,15	0.47	0	17,19,21	0.89	0
5	NAG	E	1	5,1	14,14,15	0.51	0	17,19,21	1.06	2 (11%)
5	NAG	E	2	5	14,14,15	0.55	0	17,19,21	1.02	1 (5%)
5	BMA	E	3	5	11,11,12	0.41	0	15,15,17	1.08	1 (6%)
5	MAN	E	4	5	11,11,12	0.47	0	15,15,17	0.68	0
2	NAG	F	1	1,2	14,14,15	0.42	0	17,19,21	0.95	1 (5%)
2	NAG	F	2	2	14,14,15	0.45	0	17,19,21	2.05	4 (23%)
2	FUC	F	3	2	10,10,11	0.80	0	14,14,16	1.66	4 (28%)

In the following table, the Chirals column lists the number of chiral outliers, the number of chiral centers analysed, the number of these observed in the model and the number defined in the Chemical Component Dictionary. Similar counts are reported in the Torsion and Rings columns. '-' means no outliers of that kind were identified.

Mol	Type	Chain	Res	Link	Chirals	Torsions	Rings
2	NAG	B	1	1,2	-	0/6/23/26	0/1/1/1
2	NAG	B	2	2	-	2/6/23/26	0/1/1/1

Continued on next page...

Continued from previous page...

Mol	Type	Chain	Res	Link	Chirals	Torsions	Rings
2	FUC	B	3	2	-	-	0/1/1/1
3	NAG	C	1	1,3	-	0/6/23/26	0/1/1/1
3	NAG	C	2	3	-	0/6/23/26	0/1/1/1
3	BMA	C	3	3	-	2/2/19/22	0/1/1/1
4	NAG	D	1	1,4	-	0/6/23/26	0/1/1/1
4	NAG	D	2	4	-	0/6/23/26	0/1/1/1
5	NAG	E	1	5,1	-	0/6/23/26	0/1/1/1
5	NAG	E	2	5	-	1/6/23/26	0/1/1/1
5	BMA	E	3	5	-	0/2/19/22	0/1/1/1
5	MAN	E	4	5	-	2/2/19/22	0/1/1/1
2	NAG	F	1	1,2	-	0/6/23/26	0/1/1/1
2	NAG	F	2	2	-	0/6/23/26	0/1/1/1
2	FUC	F	3	2	-	-	0/1/1/1

There are no bond length outliers.

The worst 5 of 20 bond angle outliers are listed below:

Mol	Chain	Res	Type	Atoms	Z	Observed(°)	Ideal(°)
2	F	2	NAG	O5-C1-C2	-4.39	104.36	111.29
2	F	2	NAG	C1-C2-N2	4.29	117.81	110.49
2	F	3	FUC	O5-C5-C4	3.45	115.71	109.52
2	F	2	NAG	C4-C3-C2	-3.43	105.99	111.02
3	C	1	NAG	O5-C1-C2	-3.35	105.99	111.29

There are no chirality outliers.

5 of 7 torsion outliers are listed below:

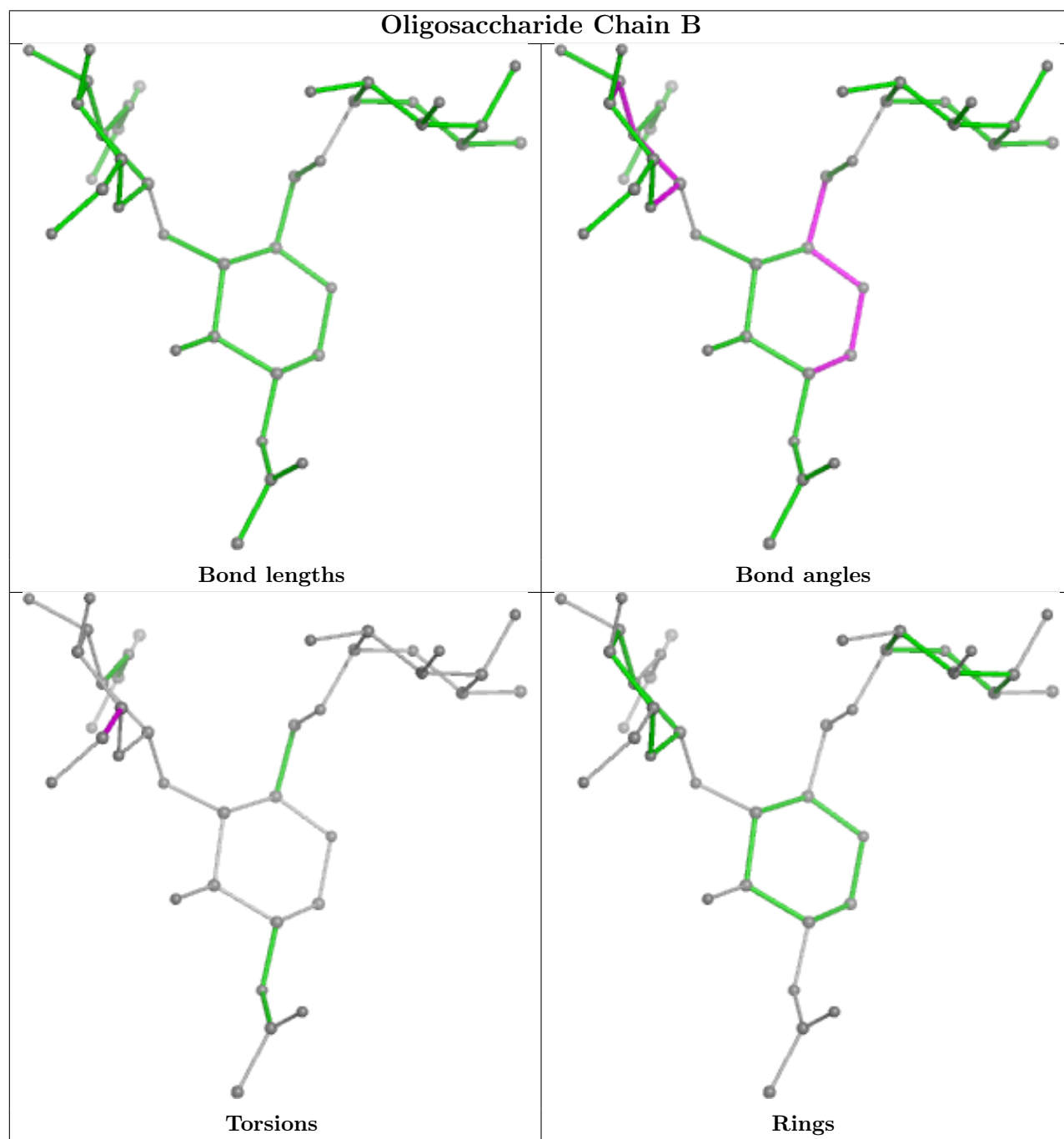
Mol	Chain	Res	Type	Atoms
5	E	4	MAN	O5-C5-C6-O6
5	E	4	MAN	C4-C5-C6-O6
2	B	2	NAG	C4-C5-C6-O6
3	C	3	BMA	O5-C5-C6-O6
2	B	2	NAG	O5-C5-C6-O6

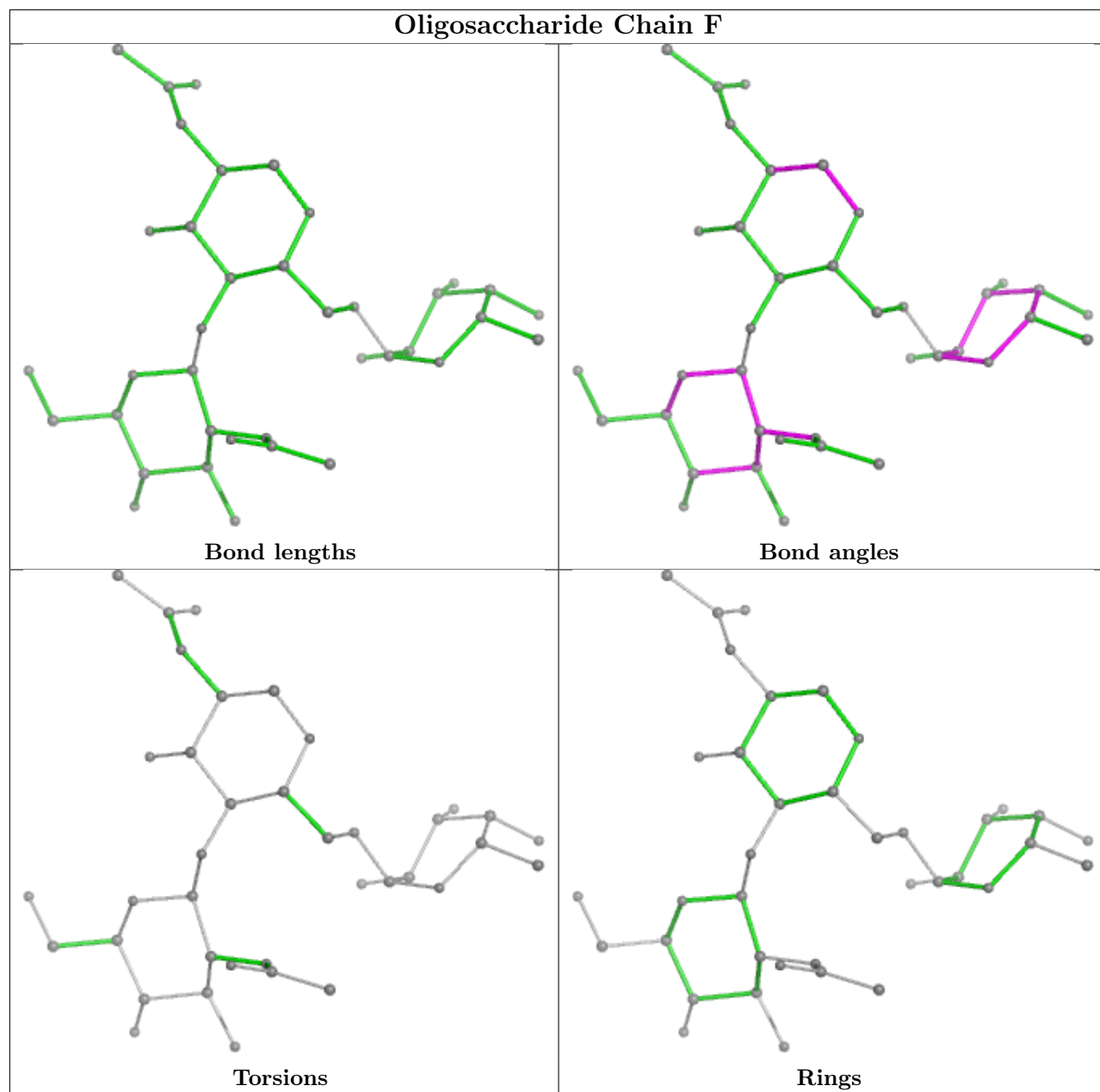
There are no ring outliers.

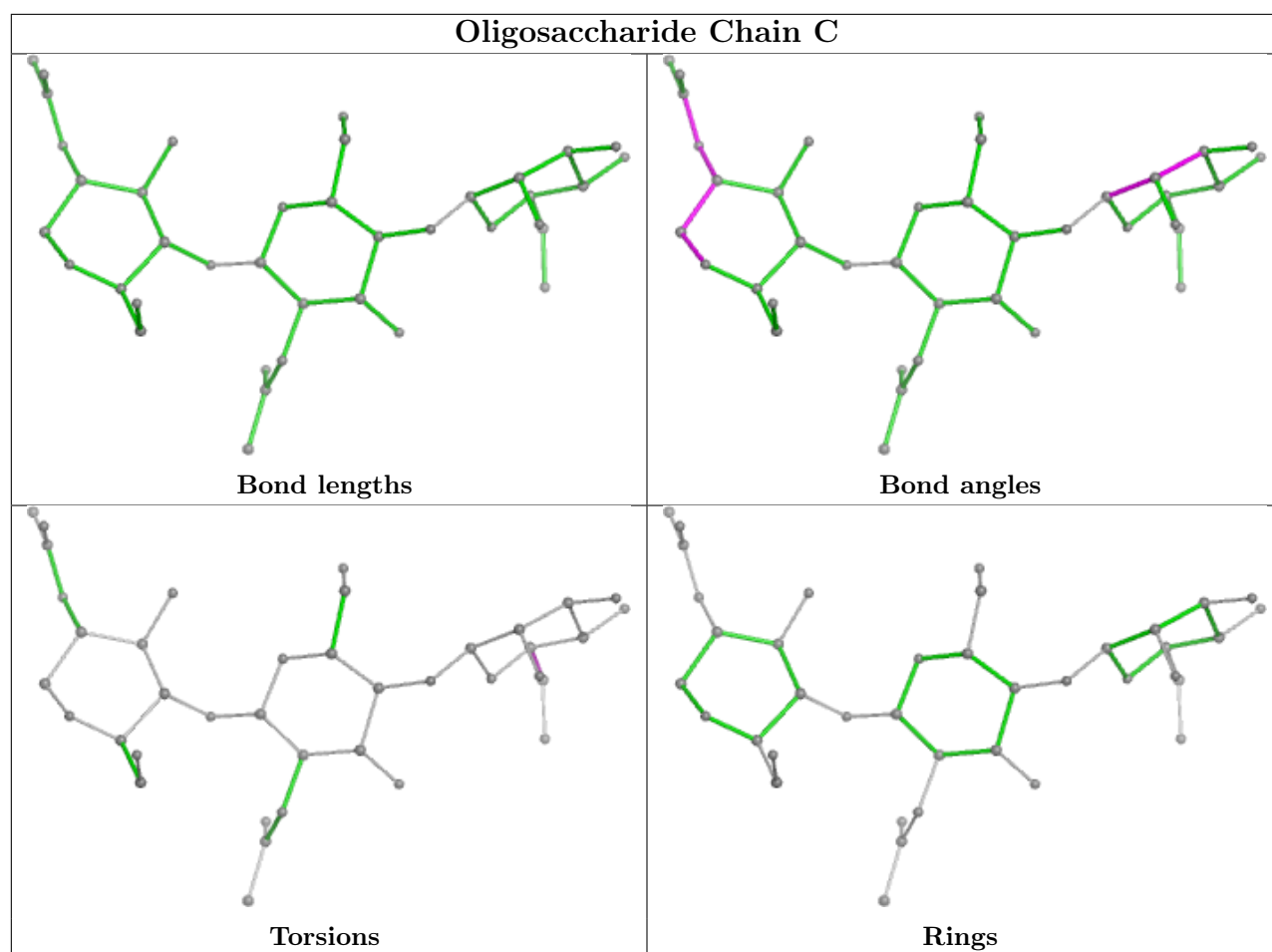
2 monomers are involved in 1 short contact:

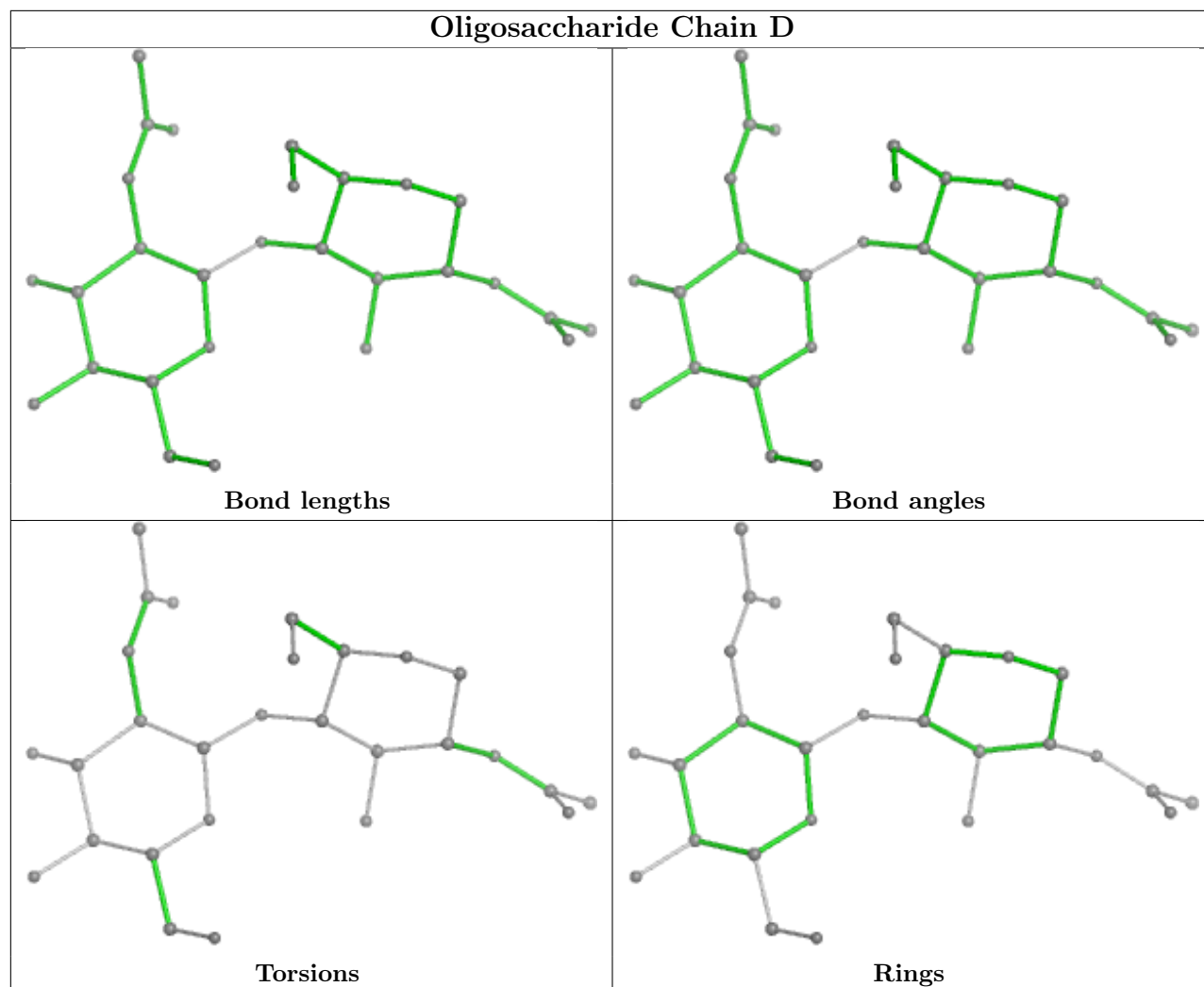
Mol	Chain	Res	Type	Clashes	Symm-Clashes
2	F	1	NAG	1	0
2	F	2	NAG	1	0

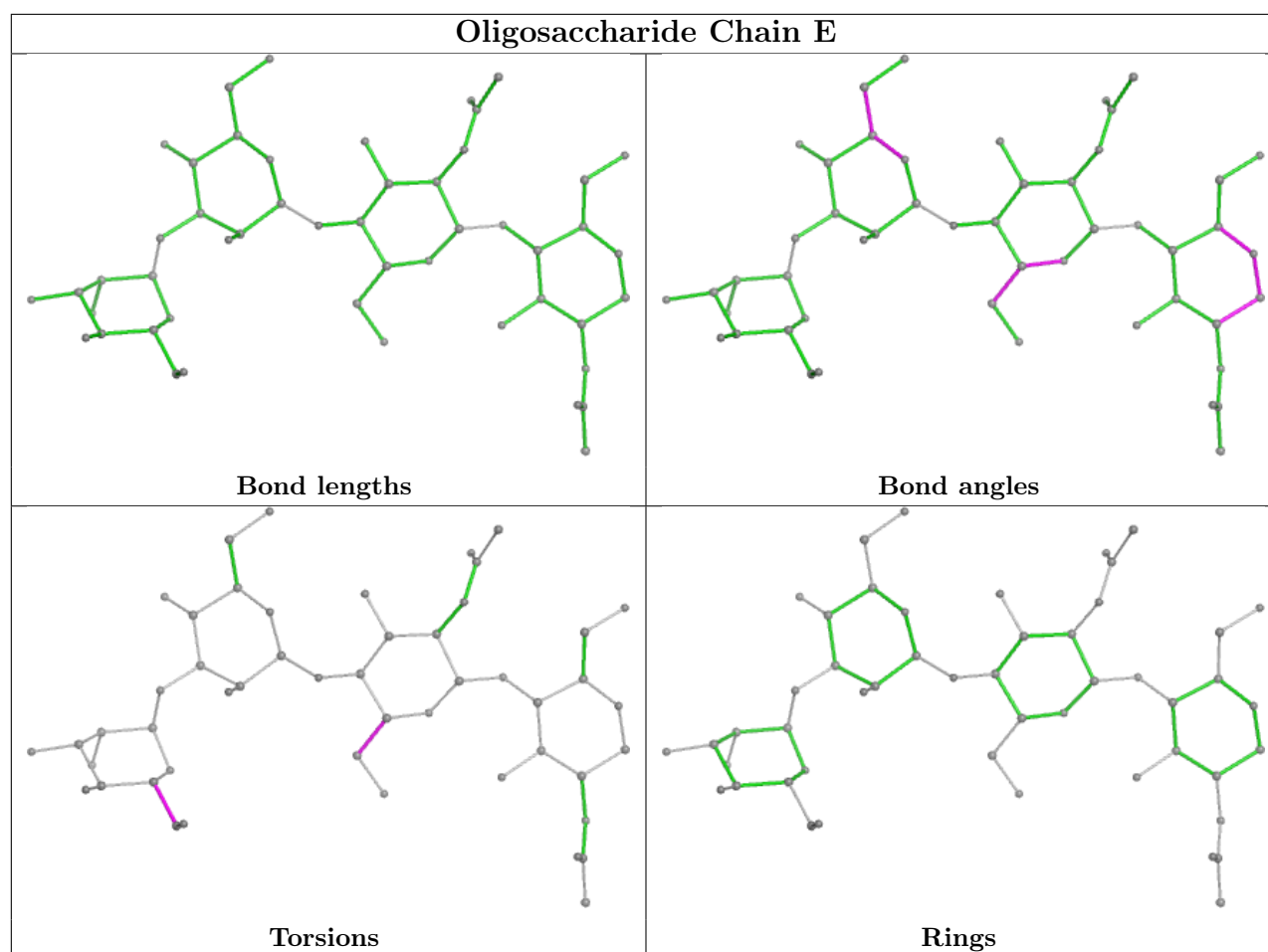
The following is a two-dimensional graphical depiction of Mogul quality analysis of bond lengths, bond angles, torsion angles, and ring geometry for oligosaccharide.











5.6 Ligand geometry [i](#)

Of 28 ligands modelled in this entry, 4 are monoatomic - leaving 24 for Mogul analysis.

In the following table, the Counts columns list the number of bonds (or angles) for which Mogul statistics could be retrieved, the number of bonds (or angles) that are observed in the model and the number of bonds (or angles) that are defined in the Chemical Component Dictionary. The Link column lists molecule types, if any, to which the group is linked. The Z score for a bond length (or angle) is the number of standard deviations the observed value is removed from the expected value. A bond length (or angle) with $|Z| > 2$ is considered an outlier worth inspection. RMSZ is the root-mean-square of all Z scores of the bond lengths (or angles).

Mol	Type	Chain	Res	Link	Bond lengths			Bond angles		
					Counts	RMSZ	$\# Z > 2$	Counts	RMSZ	$\# Z > 2$
9	EDO	A	1027	-	3,3,3	0.34	0	2,2,2	0.29	0
9	EDO	A	1014	-	3,3,3	0.15	0	2,2,2	0.45	0
9	EDO	A	1015	-	3,3,3	0.09	0	2,2,2	0.09	0
7	SO4	A	1003	-	4,4,4	0.26	0	6,6,6	0.11	0
11	GOL	A	1022	-	5,5,5	0.15	0	5,5,5	0.38	0
6	A1IPB	A	1001	-	22,26,26	0.67	0	34,41,41	1.28	4 (11%)

Mol	Type	Chain	Res	Link	Bond lengths			Bond angles		
					Counts	RMSZ	# Z > 2	Counts	RMSZ	# Z > 2
10	PGE	A	1018	-	9,9,9	0.23	0	8,8,8	0.10	0
9	EDO	A	1012	-	3,3,3	0.07	0	2,2,2	0.16	0
7	SO4	A	1005	-	4,4,4	0.36	0	6,6,6	0.10	0
9	EDO	A	1013	-	3,3,3	0.20	0	2,2,2	0.17	0
9	EDO	A	1023	-	3,3,3	0.27	0	2,2,2	0.50	0
9	EDO	A	1016	-	3,3,3	0.09	0	2,2,2	0.24	0
9	EDO	A	1025	-	3,3,3	0.17	0	2,2,2	0.17	0
10	PGE	A	1019	-	9,9,9	0.30	0	8,8,8	0.09	0
10	PGE	A	1020	-	9,9,9	0.37	0	8,8,8	0.14	0
11	GOL	A	1021	-	5,5,5	0.21	0	5,5,5	0.43	0
7	SO4	A	1004	-	4,4,4	0.32	0	6,6,6	0.11	0
11	GOL	A	1026	-	5,5,5	0.22	0	5,5,5	0.40	0
12	PEG	A	1024	-	6,6,6	0.32	0	5,5,5	0.19	0
9	EDO	A	1011	-	3,3,3	0.14	0	2,2,2	0.21	0
7	SO4	A	1002	-	4,4,4	0.36	0	6,6,6	0.12	0
7	SO4	A	1006	-	4,4,4	0.31	0	6,6,6	0.13	0
9	EDO	A	1017	-	3,3,3	0.16	0	2,2,2	0.27	0
12	PEG	A	1028	-	6,6,6	0.22	0	5,5,5	0.17	0

In the following table, the Chirals column lists the number of chiral outliers, the number of chiral centers analysed, the number of these observed in the model and the number defined in the Chemical Component Dictionary. Similar counts are reported in the Torsion and Rings columns. '-' means no outliers of that kind were identified.

Mol	Type	Chain	Res	Link	Chirals	Torsions	Rings
9	EDO	A	1027	-	-	0/1/1/1	-
9	EDO	A	1014	-	-	0/1/1/1	-
9	EDO	A	1015	-	-	0/1/1/1	-
11	GOL	A	1022	-	-	1/4/4/4	-
6	A1IPB	A	1001	-	-	0/10/57/57	0/5/4/4
10	PGE	A	1018	-	-	3/7/7/7	-
9	EDO	A	1012	-	-	0/1/1/1	-
9	EDO	A	1013	-	-	1/1/1/1	-
9	EDO	A	1023	-	-	0/1/1/1	-
9	EDO	A	1016	-	-	0/1/1/1	-
9	EDO	A	1025	-	-	1/1/1/1	-
10	PGE	A	1019	-	-	2/7/7/7	-
10	PGE	A	1020	-	-	5/7/7/7	-
11	GOL	A	1021	-	-	1/4/4/4	-
11	GOL	A	1026	-	-	4/4/4/4	-
12	PEG	A	1024	-	-	1/4/4/4	-
9	EDO	A	1011	-	-	0/1/1/1	-

Continued on next page...

Continued from previous page...

Mol	Type	Chain	Res	Link	Chirals	Torsions	Rings
9	EDO	A	1017	-	-	1/1/1/1	-
12	PEG	A	1028	-	-	2/4/4/4	-

There are no bond length outliers.

All (4) bond angle outliers are listed below:

Mol	Chain	Res	Type	Atoms	Z	Observed(°)	Ideal(°)
6	A	1001	A1IPB	C14-C53-C47	4.04	113.30	110.44
6	A	1001	A1IPB	C19-C14-C53	-3.35	105.81	108.46
6	A	1001	A1IPB	C6-C5-N5	-2.58	105.03	110.75
6	A	1001	A1IPB	O2-C2-C1	-2.02	105.67	109.61

There are no chirality outliers.

5 of 22 torsion outliers are listed below:

Mol	Chain	Res	Type	Atoms
11	A	1026	GOL	O1-C1-C2-C3
10	A	1020	PGE	O3-C5-C6-O4
10	A	1019	PGE	O2-C3-C4-O3
10	A	1020	PGE	O1-C1-C2-O2
12	A	1028	PEG	O2-C3-C4-O4

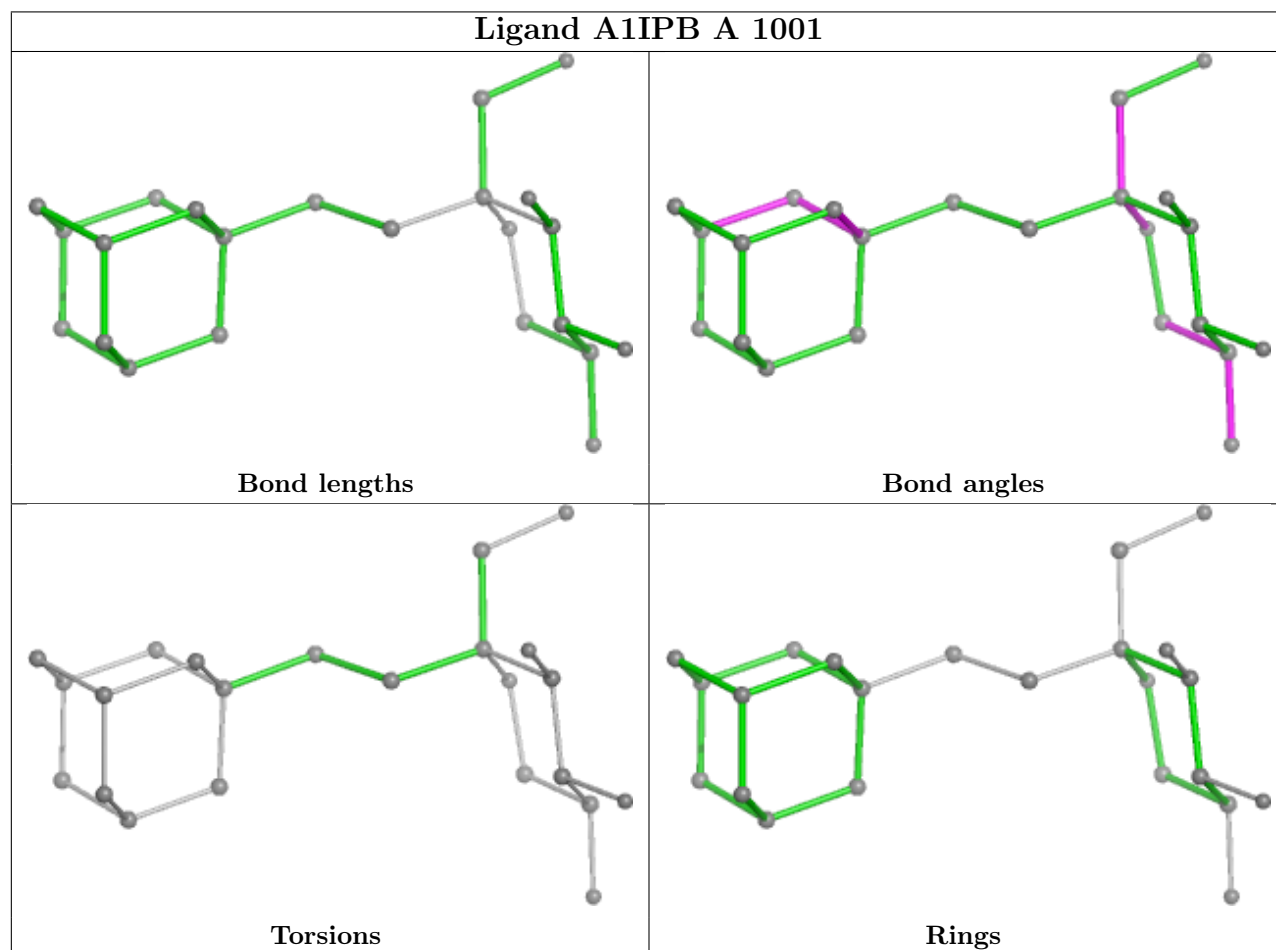
There are no ring outliers.

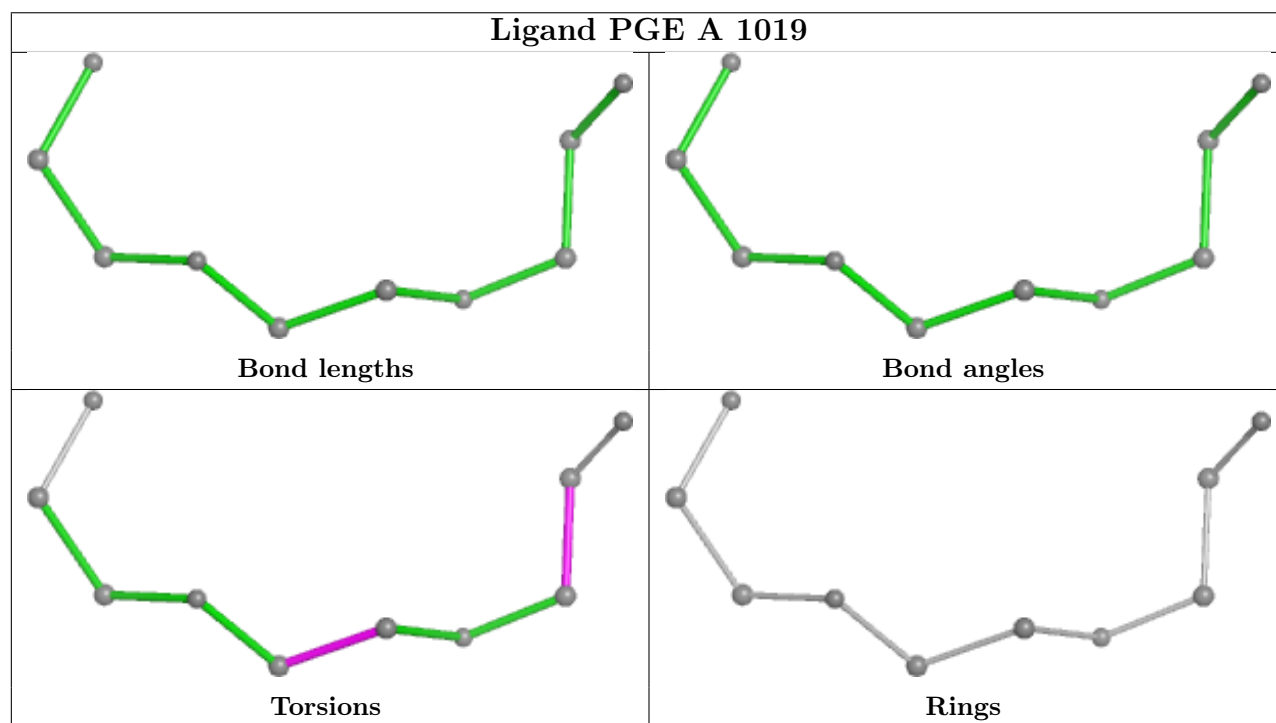
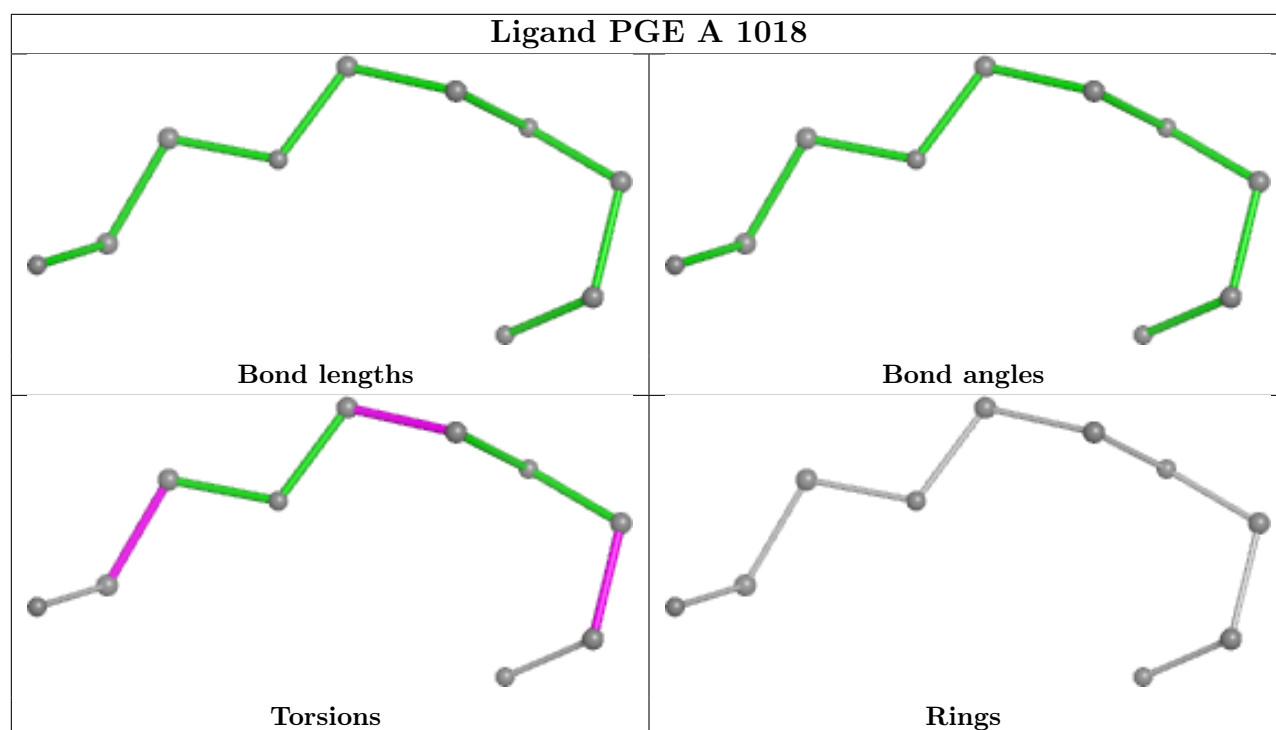
6 monomers are involved in 8 short contacts:

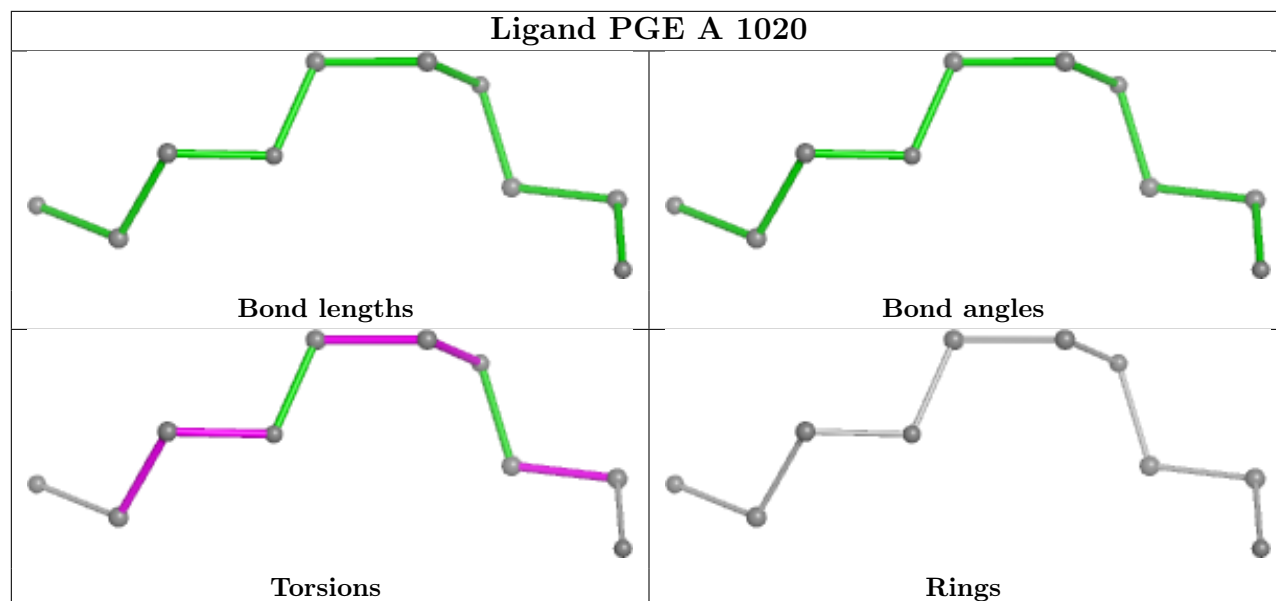
Mol	Chain	Res	Type	Clashes	Symm-Clashes
9	A	1014	EDO	1	0
11	A	1022	GOL	1	0
7	A	1005	SO4	1	0
9	A	1023	EDO	1	0
11	A	1021	GOL	2	0
11	A	1026	GOL	2	0

The following is a two-dimensional graphical depiction of Mogul quality analysis of bond lengths, bond angles, torsion angles, and ring geometry for all instances of the Ligand of Interest. In addition, ligands with molecular weight > 250 and outliers as shown on the validation Tables will also be included. For torsion angles, if less than 5% of the Mogul distribution of torsion angles is within 10 degrees of the torsion angle in question, then that torsion angle is considered an outlier. Any bond that is central to one or more torsion angles identified as an outlier by Mogul will be highlighted in the graph. For rings, the root-mean-square deviation (RMSD) between the ring in question and similar rings identified by Mogul is calculated over all ring torsion angles. If the

average RMSD is greater than 60 degrees and the minimal RMSD between the ring in question and any Mogul-identified rings is also greater than 60 degrees, then that ring is considered an outlier. The outliers are highlighted in purple. The color gray indicates Mogul did not find sufficient equivalents in the CSD to analyse the geometry.







5.7 Other polymers [i](#)

There are no such residues in this entry.

5.8 Polymer linkage issues [i](#)

There are no chain breaks in this entry.

6 Fit of model and data [i](#)

6.1 Protein, DNA and RNA chains [i](#)

In the following table, the column labelled ‘#RSRZ> 2’ contains the number (and percentage) of RSRZ outliers, followed by percent RSRZ outliers for the chain as percentile scores relative to all X-ray entries and entries of similar resolution. The OWAB column contains the minimum, median, 95th percentile and maximum values of the occupancy-weighted average B-factor per residue. The column labelled ‘Q< 0.9’ lists the number of (and percentage) of residues with an average occupancy less than 0.9.

Mol	Chain	Analysed	<RSRZ>	#RSRZ>2	OWAB(Å ²)	Q<0.9
1	A	853/952 (89%)	-0.08	26 (3%) 52 58	30, 49, 76, 149	7 (0%)

The worst 5 of 26 RSRZ outliers are listed below:

Mol	Chain	Res	Type	RSRZ
1	A	790	PRO	5.7
1	A	146	MET	4.8
1	A	204	ALA	4.8
1	A	786	LEU	4.7
1	A	788	PRO	4.5

6.2 Non-standard residues in protein, DNA, RNA chains [i](#)

There are no non-standard protein/DNA/RNA residues in this entry.

6.3 Carbohydrates [i](#)

In the following table, the Atoms column lists the number of modelled atoms in the group and the number defined in the chemical component dictionary. The B-factors column lists the minimum, median, 95th percentile and maximum values of B factors of atoms in the group. The column labelled ‘Q< 0.9’ lists the number of atoms with occupancy less than 0.9.

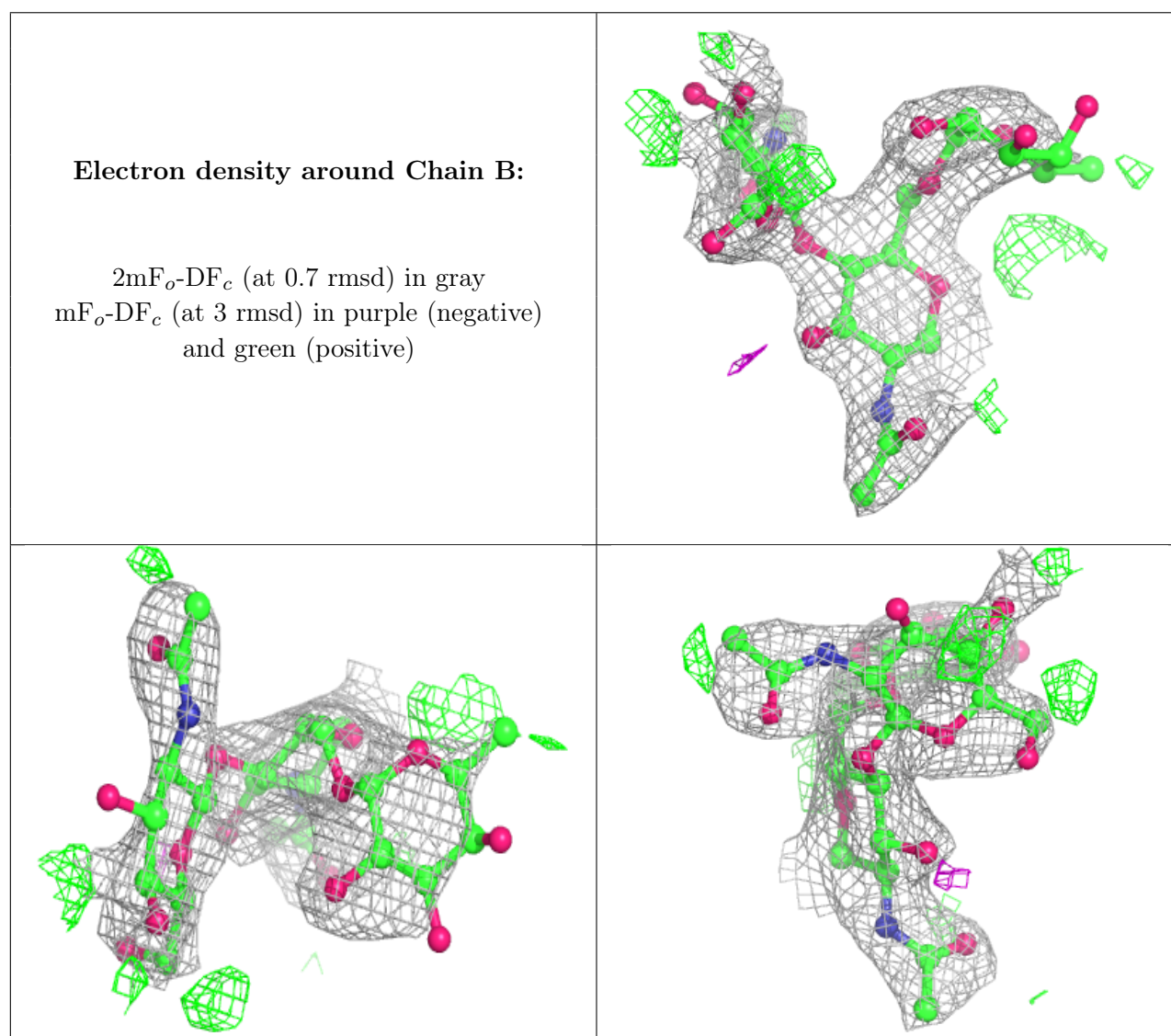
Mol	Type	Chain	Res	Atoms	RSCC	RSR	B-factors(Å ²)	Q<0.9
3	BMA	C	3	11/12	0.30	0.20	113,130,142,143	0
5	MAN	E	4	11/12	0.47	0.18	107,127,141,142	0
2	NAG	F	2	14/15	0.59	0.21	88,128,141,145	0
2	NAG	B	2	14/15	0.63	0.20	84,111,126,126	0
5	BMA	E	3	11/12	0.69	0.15	94,111,118,127	0
4	NAG	D	2	14/15	0.69	0.19	85,116,126,126	0
2	FUC	F	3	10/11	0.73	0.23	88,106,119,125	0

Continued on next page...

Continued from previous page...

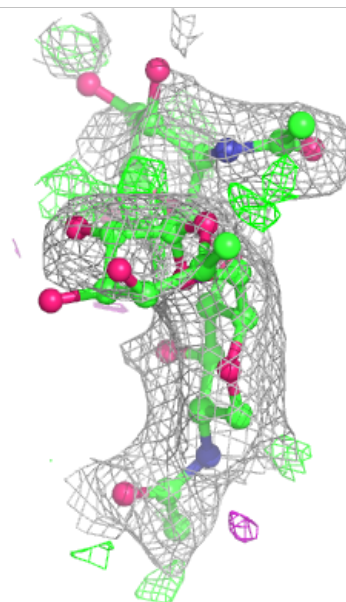
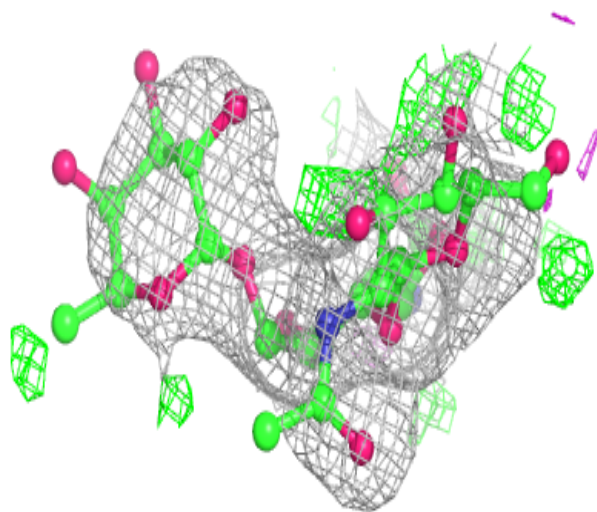
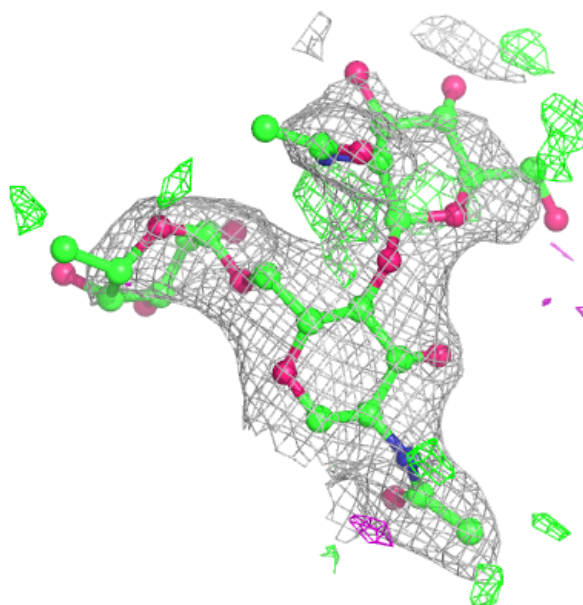
Mol	Type	Chain	Res	Atoms	RSCC	RSR	B-factors(\AA^2)	Q<0.9
2	FUC	B	3	10/11	0.74	0.21	91,122,135,136	0
3	NAG	C	2	14/15	0.82	0.16	72,96,117,138	0
2	NAG	F	1	14/15	0.91	0.12	62,76,85,91	0
2	NAG	B	1	14/15	0.91	0.12	63,77,94,99	0
4	NAG	D	1	14/15	0.92	0.11	51,62,78,101	0
5	NAG	E	2	14/15	0.93	0.11	52,63,69,88	0
3	NAG	C	1	14/15	0.94	0.10	52,56,66,76	0
5	NAG	E	1	14/15	0.97	0.07	48,52,59,60	0

The following is a graphical depiction of the model fit to experimental electron density for oligosaccharide. Each fit is shown from different orientation to approximate a three-dimensional view.



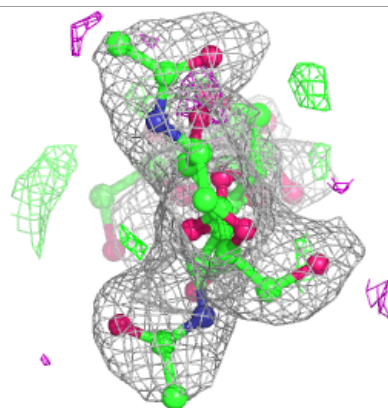
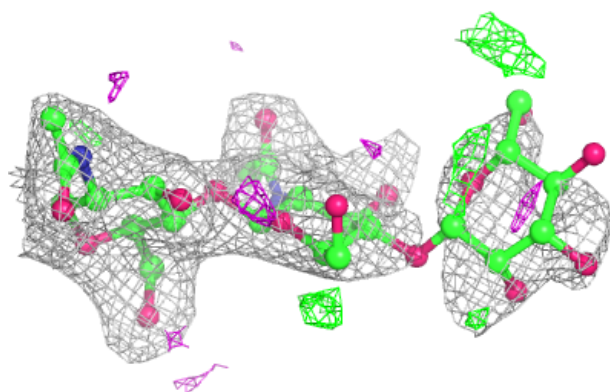
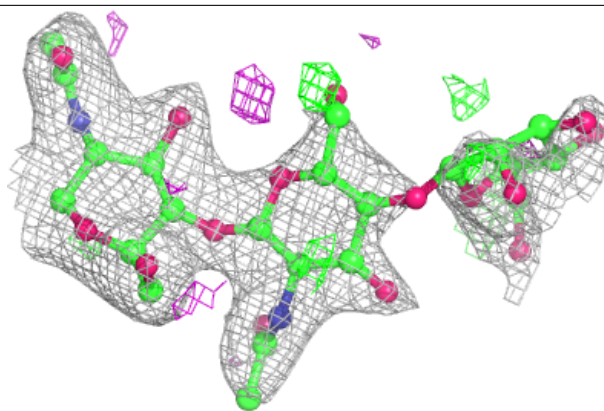
Electron density around Chain F:

$2mF_o-DF_c$ (at 0.7 rmsd) in gray
 mF_o-DF_c (at 3 rmsd) in purple (negative)
and green (positive)

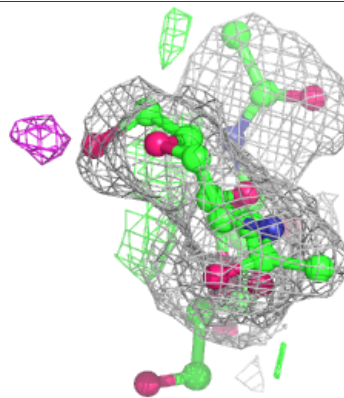
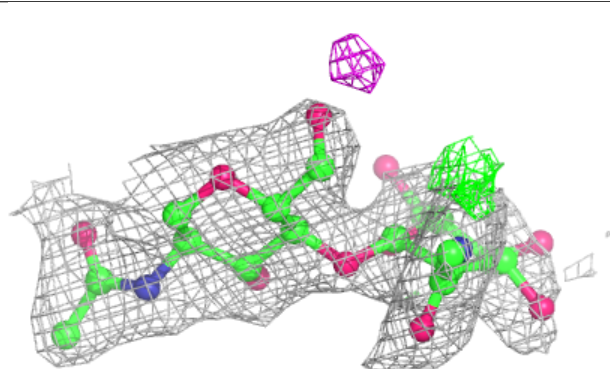
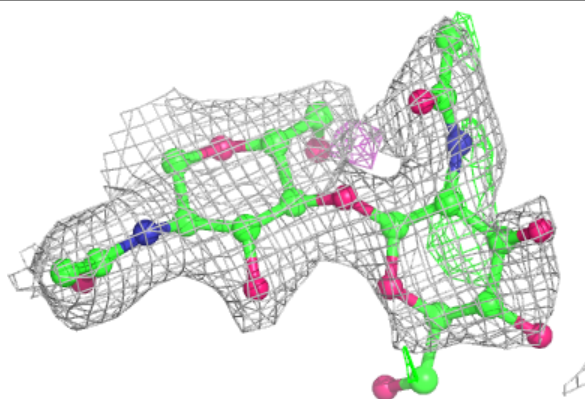


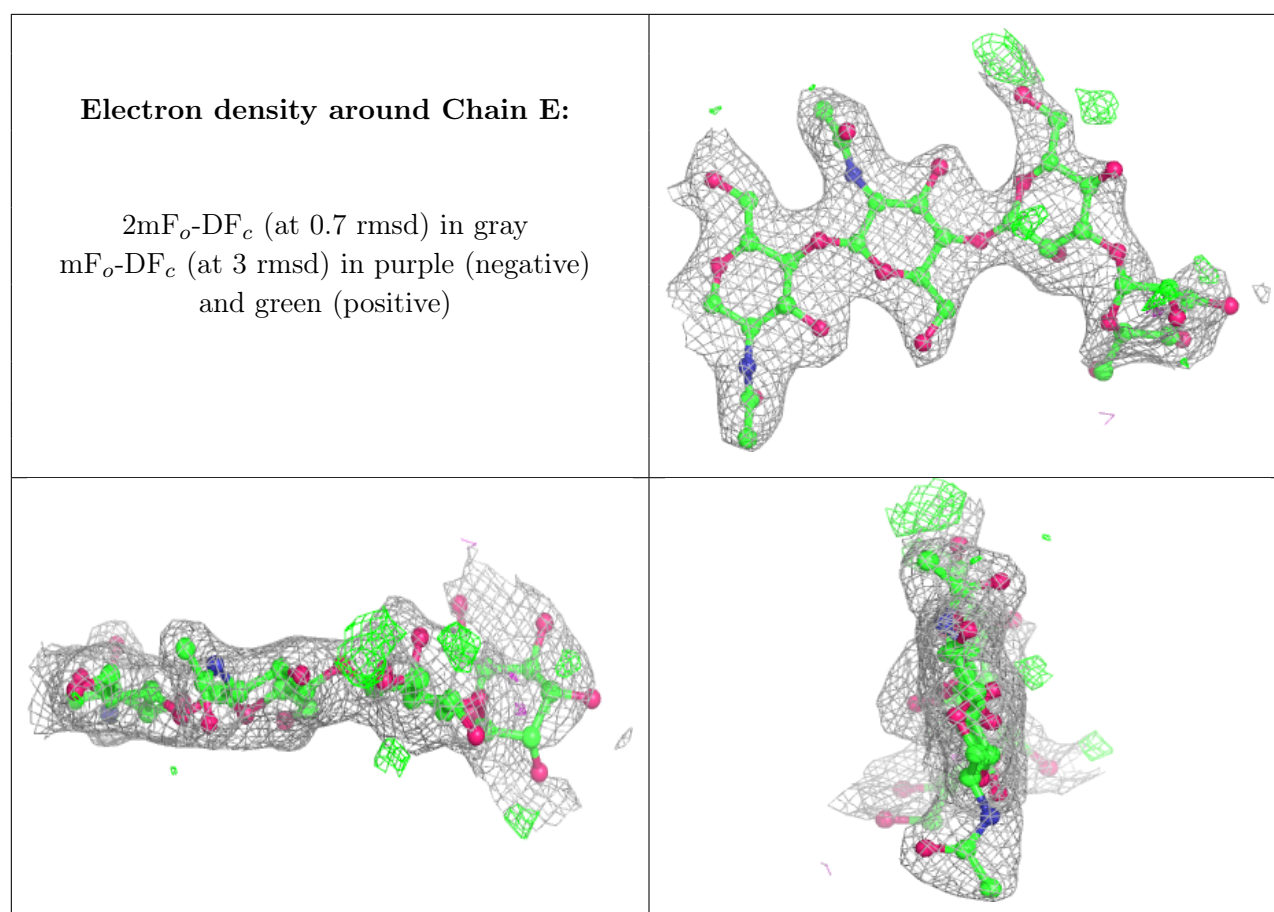
Electron density around Chain C:

$2mF_o-DF_c$ (at 0.7 rmsd) in gray
 mF_o-DF_c (at 3 rmsd) in purple (negative)
and green (positive)

**Electron density around Chain D:**

$2mF_o-DF_c$ (at 0.7 rmsd) in gray
 mF_o-DF_c (at 3 rmsd) in purple (negative)
and green (positive)





6.4 Ligands ⓘ

In the following table, the Atoms column lists the number of modelled atoms in the group and the number defined in the chemical component dictionary. The B-factors column lists the minimum, median, 95th percentile and maximum values of B factors of atoms in the group. The column labelled 'Q< 0.9' lists the number of atoms with occupancy less than 0.9.

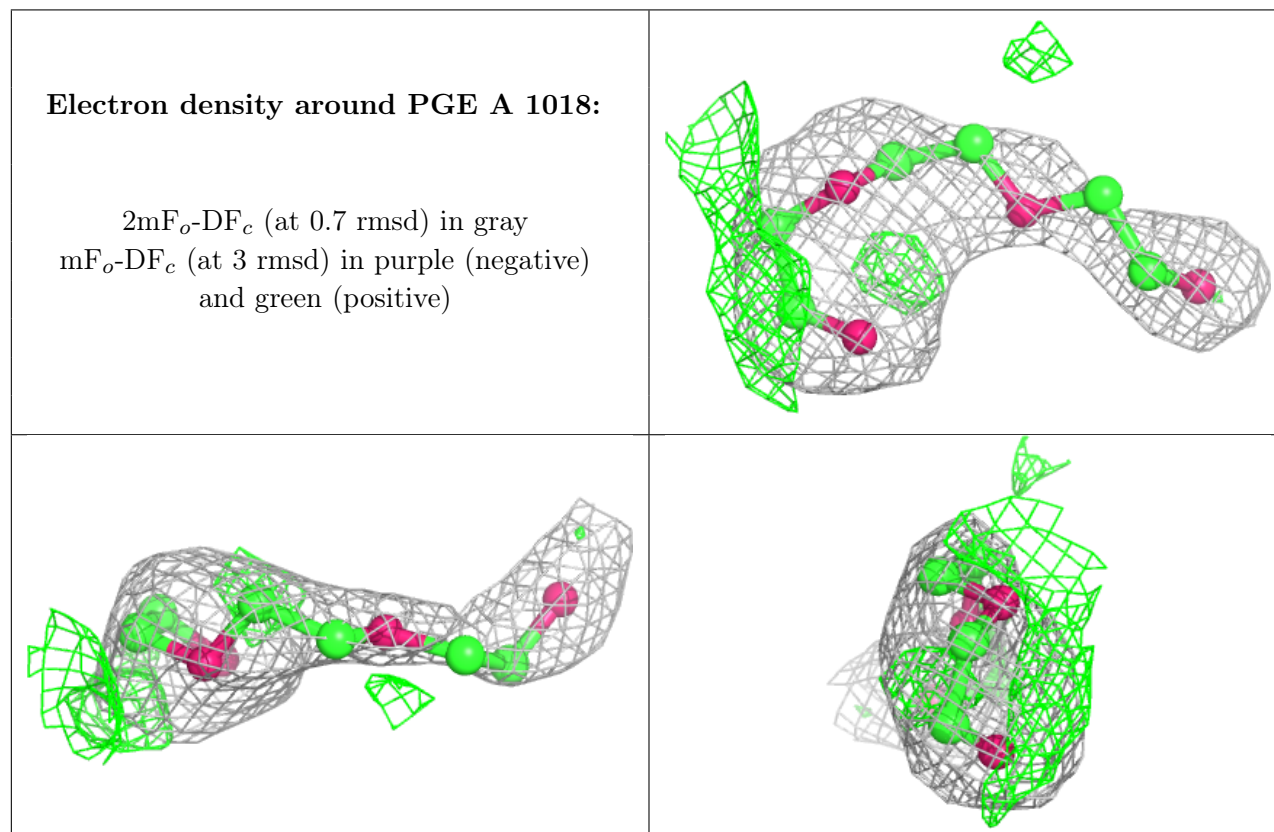
Mol	Type	Chain	Res	Atoms	RSCC	RSR	B-factors(Å ²)	Q<0.9
7	SO4	A	1005	5/5	0.76	0.16	109,110,126,134	0
7	SO4	A	1003	5/5	0.83	0.12	83,86,90,99	0
9	EDO	A	1011	4/4	0.83	0.20	88,89,95,95	0
9	EDO	A	1012	4/4	0.84	0.29	79,82,84,89	0
12	PEG	A	1028	7/7	0.85	0.23	91,92,102,102	0
10	PGE	A	1018	10/10	0.86	0.25	84,99,111,114	0
9	EDO	A	1013	4/4	0.87	0.20	79,82,84,90	0
11	GOL	A	1026	6/6	0.88	0.18	61,92,97,99	0
9	EDO	A	1015	4/4	0.88	0.22	67,81,82,83	0
9	EDO	A	1027	4/4	0.89	0.25	68,70,77,80	0
11	GOL	A	1022	6/6	0.89	0.16	58,70,75,94	0
9	EDO	A	1014	4/4	0.90	0.17	78,86,87,88	0
7	SO4	A	1004	5/5	0.90	0.12	83,90,96,110	0

Continued on next page...

Continued from previous page...

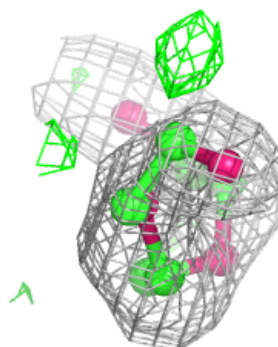
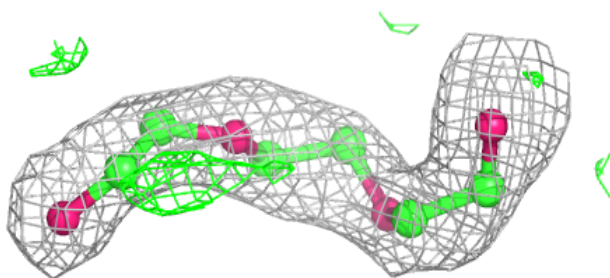
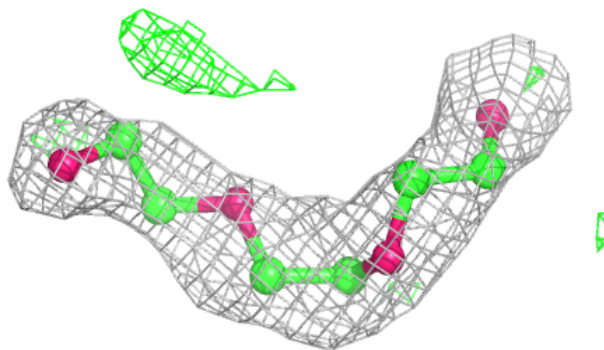
Mol	Type	Chain	Res	Atoms	RSCC	RSR	B-factors(\AA^2)	Q<0.9
10	PGE	A	1020	10/10	0.90	0.21	78,88,100,102	0
9	EDO	A	1017	4/4	0.91	0.18	83,92,93,100	0
9	EDO	A	1016	4/4	0.91	0.20	78,84,88,92	0
12	PEG	A	1024	7/7	0.91	0.19	79,86,94,95	0
11	GOL	A	1021	6/6	0.91	0.16	69,74,76,78	0
9	EDO	A	1023	4/4	0.92	0.17	67,67,67,76	0
8	CL	A	1008	1/1	0.92	0.14	86,86,86,86	0
8	CL	A	1009	1/1	0.92	0.12	97,97,97,97	0
10	PGE	A	1019	10/10	0.92	0.18	75,86,100,102	0
8	CL	A	1007	1/1	0.92	0.13	90,90,90,90	0
9	EDO	A	1025	4/4	0.94	0.16	76,77,80,85	0
7	SO4	A	1006	5/5	0.94	0.14	61,64,76,84	0
7	SO4	A	1002	5/5	0.95	0.13	67,68,79,81	0
8	CL	A	1010	1/1	0.97	0.14	85,85,85,85	0
6	A1IPB	A	1001	23/23	0.98	0.07	39,43,45,47	0

The following is a graphical depiction of the model fit to experimental electron density of all instances of the Ligand of Interest. In addition, ligands with molecular weight > 250 and outliers as shown on the geometry validation Tables will also be included. Each fit is shown from different orientation to approximate a three-dimensional view.

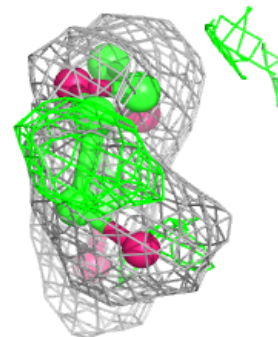
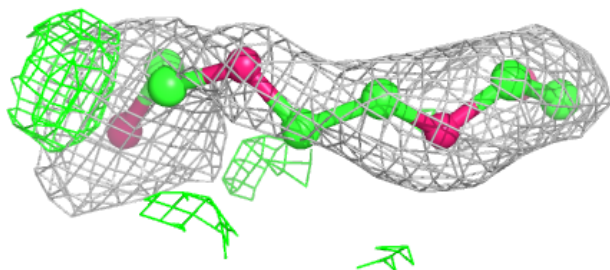
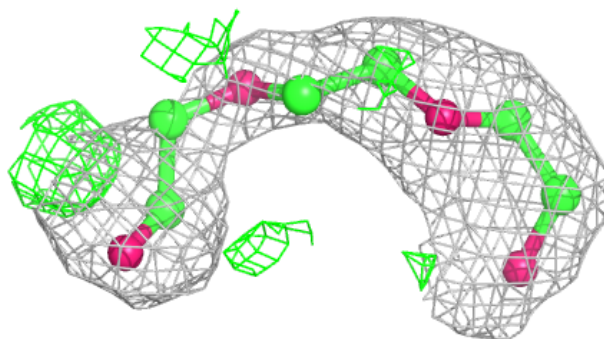


Electron density around PGE A 1020:

$2mF_o-DF_c$ (at 0.7 rmsd) in gray
 mF_o-DF_c (at 3 rmsd) in purple (negative)
and green (positive)

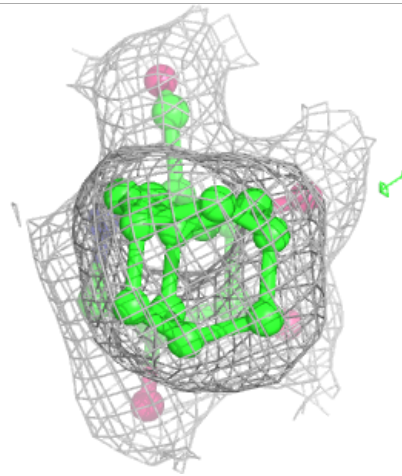
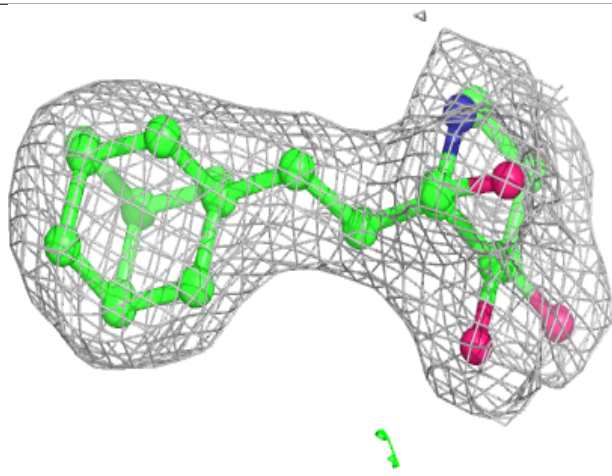
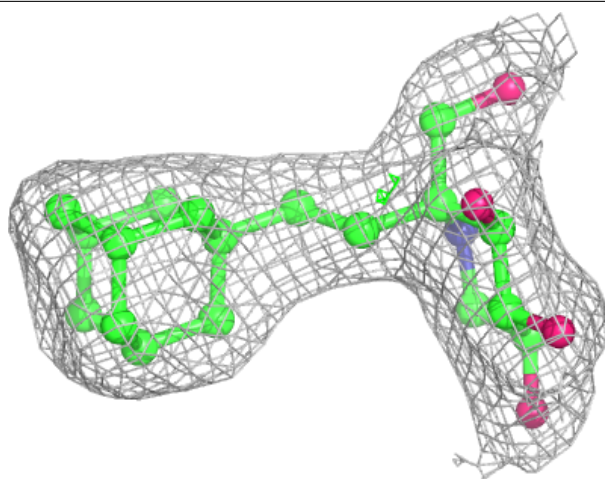
**Electron density around PGE A 1019:**

$2mF_o-DF_c$ (at 0.7 rmsd) in gray
 mF_o-DF_c (at 3 rmsd) in purple (negative)
and green (positive)



Electron density around A1IPB A 1001:

$2mF_o-DF_c$ (at 0.7 rmsd) in gray
 mF_o-DF_c (at 3 rmsd) in purple (negative)
and green (positive)



6.5 Other polymers [i](#)

There are no such residues in this entry.