



Full wwPDB X-ray Structure Validation Report ⓘ

Sep 30, 2025 – 11:19 am BST

PDB ID : 9GXD / pdb_00009gxd
Title : Human PPAR-gamma ligand binding domain in complex with AKGO27
Authors : Koops, A.A.; Oerlemans, G.J.M.; Brunsveld, L.
Deposited on : 2024-09-30
Resolution : 2.20 Å(reported)

This is a Full wwPDB X-ray Structure Validation Report for a publicly released PDB entry.

We welcome your comments at validation@mail.wwpdb.org

A user guide is available at

<https://www.wwpdb.org/validation/2017/XrayValidationReportHelp>

with specific help available everywhere you see the ⓘ symbol.

The types of validation reports are described at

<http://www.wwpdb.org/validation/2017/FAQs#types>.

The following versions of software and data (see [references ⓘ](#)) were used in the production of this report:

MolProbity : 4-5-2 with Phenix2.0
Mogul : 1.8.4, CSD as541be (2020)
Xtriage (Phenix) : 2.0
EDS : 3.0
buster-report : 1.1.7 (2018)
Percentile statistics : 20231227.v01 (using entries in the PDB archive December 27th 2023)
CCP4 : 9.0.010 (Gargrove)
Density-Fitness : 1.0.12
Ideal geometry (proteins) : Engh & Huber (2001)
Ideal geometry (DNA, RNA) : Parkinson et al. (1996)
Validation Pipeline (wwPDB-VP) : 2.46

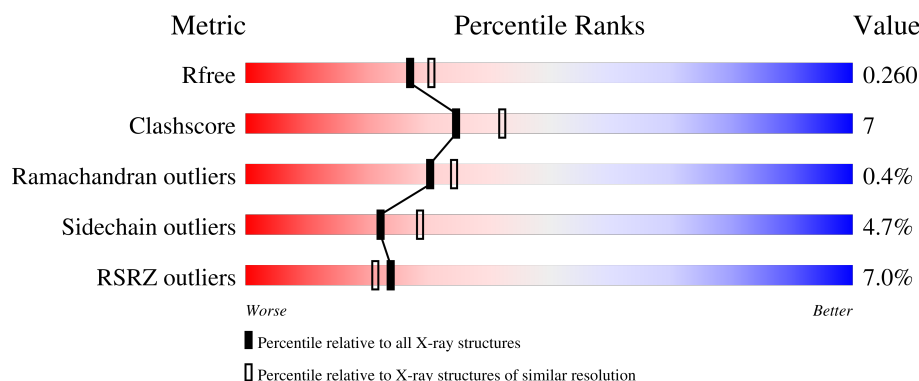
1 Overall quality at a glance

The following experimental techniques were used to determine the structure:

X-RAY DIFFRACTION

The reported resolution of this entry is 2.20 Å.

Percentile scores (ranging between 0-100) for global validation metrics of the entry are shown in the following graphic. The table shows the number of entries on which the scores are based.



Metric	Whole archive (#Entries)	Similar resolution (#Entries, resolution range(Å))
R_{free}	164625	5791 (2.20-2.20)
Clashscore	180529	6634 (2.20-2.20)
Ramachandran outliers	177936	6560 (2.20-2.20)
Sidechain outliers	177891	6561 (2.20-2.20)
RSRZ outliers	164620	5791 (2.20-2.20)

The table below summarises the geometric issues observed across the polymeric chains and their fit to the electron density. The red, orange, yellow and green segments of the lower bar indicate the fraction of residues that contain outliers for ≥ 3 , 2, 1 and 0 types of geometric quality criteria respectively. A grey segment represents the fraction of residues that are not modelled. The numeric value for each fraction is indicated below the corresponding segment, with a dot representing fractions $\leq 5\%$. The upper red bar (where present) indicates the fraction of residues that have poor fit to the electron density. The numeric value is given above the bar.

Mol	Chain	Length	Quality of chain
1	A	275	<div> <div>7%</div> <div>77%</div> <div>17%</div> <div>• •</div> </div>
1	B	275	<div> <div>7%</div> <div>81%</div> <div>12%</div> <div>• •</div> </div>

2 Entry composition

There are 3 unique types of molecules in this entry. The entry contains 4159 atoms, of which 0 are hydrogens and 0 are deuteriums.

In the tables below, the ZeroOcc column contains the number of atoms modelled with zero occupancy, the AltConf column contains the number of residues with at least one atom in alternate conformation and the Trace column contains the number of residues modelled with at most 2 atoms.

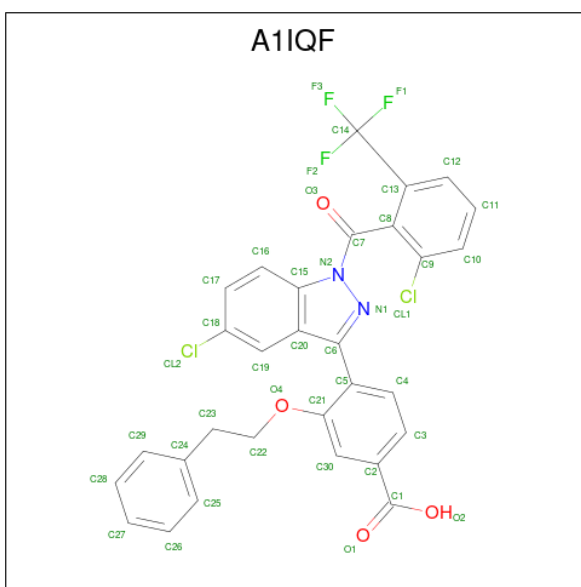
- Molecule 1 is a protein called Peroxisome proliferator-activated receptor gamma.

Mol	Chain	Residues	Atoms					ZeroOcc	AltConf	Trace
1	B	264	Total	C	N	O	S	0	0	0
			2028	1308	330	379	11			
1	A	264	Total	C	N	O	S	0	0	0
			2037	1317	335	376	9			

There are 8 discrepancies between the modelled and reference sequences:

Chain	Residue	Modelled	Actual	Comment	Reference
B	231	GLY	-	expression tag	UNP P37231
B	232	SER	-	expression tag	UNP P37231
B	233	HIS	-	expression tag	UNP P37231
B	234	MET	-	expression tag	UNP P37231
A	231	GLY	-	expression tag	UNP P37231
A	232	SER	-	expression tag	UNP P37231
A	233	HIS	-	expression tag	UNP P37231
A	234	MET	-	expression tag	UNP P37231

- Molecule 2 is 4-[5-chloranyl-1-[2-chloranyl-6-(trifluoromethyl)phenyl]carbonyl-indazol-3-yl]-3-(2-phenylethoxy)benzoic acid (CCD ID: A1IQF) (formula: C₃₀H₁₉Cl₂F₃N₂O₄) (labeled as "Ligand of Interest" by depositor).



Mol	Chain	Residues	Atoms						ZeroOcc	AltConf
2	B	1	Total	C	Cl	F	N	O	0	0
			41	30	2	3	2	4		
2	A	1	Total	C	Cl	F	N	O	0	0
			41	30	2	3	2	4		


- Molecule 3 is water.

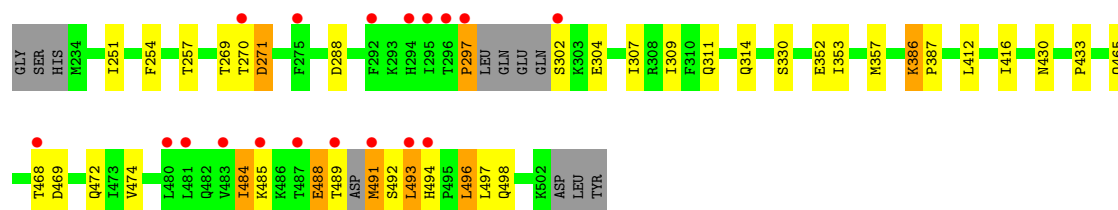
Mol	Chain	Residues	Atoms	ZeroOcc	AltConf
3	B	4	Total	O	0
			4	4	
3	A	8	Total	O	0
			8	8	

3 Residue-property plots [i](#)


These plots are drawn for all protein, RNA, DNA and oligosaccharide chains in the entry. The first graphic for a chain summarises the proportions of the various outlier classes displayed in the second graphic. The second graphic shows the sequence view annotated by issues in geometry and electron density. Residues are color-coded according to the number of geometric quality criteria for which they contain at least one outlier: green = 0, yellow = 1, orange = 2 and red = 3 or more. A red dot above a residue indicates a poor fit to the electron density ($RSRZ > 2$). Stretches of 2 or more consecutive residues without any outlier are shown as a green connector. Residues present in the sample, but not in the model, are shown in grey.

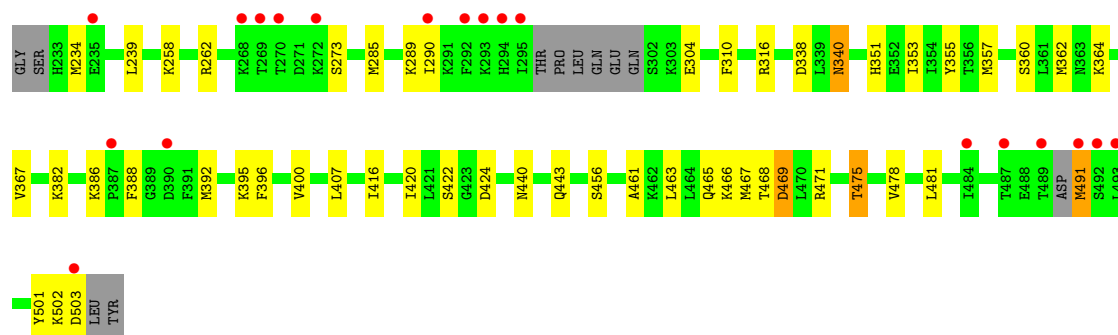
- Molecule 1: Peroxisome proliferator-activated receptor gamma

Chain B: 



- Molecule 1: Peroxisome proliferator-activated receptor gamma

Chain A: 



4 Data and refinement statistics

Property	Value	Source
Space group	C 1 2 1	Depositor
Cell constants a, b, c, α , β , γ	94.11Å 61.95Å 119.17Å 90.00° 101.51° 90.00°	Depositor
Resolution (Å)	58.39 – 2.20 58.39 – 2.20	Depositor EDS
% Data completeness (in resolution range)	99.3 (58.39-2.20) 99.4 (58.39-2.20)	Depositor EDS
R_{merge}	(Not available)	Depositor
R_{sym}	(Not available)	Depositor
$\langle I/\sigma(I) \rangle$ ¹	1.29 (at 2.20Å)	Xtriage
Refinement program	REFMAC 5, PHENIX (???)	Depositor
R, R_{free}	0.211 , 0.261 0.225 , 0.260	Depositor DCC
R_{free} test set	1710 reflections (4.97%)	wwPDB-VP
Wilson B-factor (Å ²)	56.7	Xtriage
Anisotropy	0.245	Xtriage
Bulk solvent k_{sol} (e/Å ³), B_{sol} (Å ²)	0.33 , 56.2	EDS
L-test for twinning ²	$\langle L \rangle = 0.49$, $\langle L^2 \rangle = 0.33$	Xtriage
Estimated twinning fraction	No twinning to report.	Xtriage
F_o, F_c correlation	0.96	EDS
Total number of atoms	4159	wwPDB-VP
Average B, all atoms (Å ²)	74.0	wwPDB-VP

Xtriage's analysis on translational NCS is as follows: *The largest off-origin peak in the Patterson function is 5.36% of the height of the origin peak. No significant pseudotranslation is detected.*

¹Intensities estimated from amplitudes.

²Theoretical values of $\langle |L| \rangle$, $\langle L^2 \rangle$ for acentric reflections are 0.5, 0.333 respectively for untwinned datasets, and 0.375, 0.2 for perfectly twinned datasets.

5 Model quality [i](#)

5.1 Standard geometry [i](#)

Bond lengths and bond angles in the following residue types are not validated in this section: A1IQF

The Z score for a bond length (or angle) is the number of standard deviations the observed value is removed from the expected value. A bond length (or angle) with $|Z| > 5$ is considered an outlier worth inspection. RMSZ is the root-mean-square of all Z scores of the bond lengths (or angles).

Mol	Chain	Bond lengths		Bond angles	
		RMSZ	$\# Z > 5$	RMSZ	$\# Z > 5$
1	A	0.44	0/2071	0.61	0/2800
1	B	0.50	0/2063	0.71	2/2795 (0.1%)
All	All	0.47	0/4134	0.66	2/5595 (0.0%)

There are no bond length outliers.

All (2) bond angle outliers are listed below:

Mol	Chain	Res	Type	Atoms	Z	Observed(°)	Ideal(°)
1	B	270	THR	N-CA-C	-5.32	107.10	113.21
1	B	488	GLU	N-CA-CB	-5.13	102.54	110.13

There are no chirality outliers.

There are no planarity outliers.

5.2 Too-close contacts [i](#)

In the following table, the Non-H and H(model) columns list the number of non-hydrogen atoms and hydrogen atoms in the chain respectively. The H(added) column lists the number of hydrogen atoms added and optimized by MolProbity. The Clashes column lists the number of clashes within the asymmetric unit, whereas Symm-Clashes lists symmetry-related clashes.

Mol	Chain	Non-H	H(model)	H(added)	Clashes	Symm-Clashes
1	A	2037	0	2029	36	0
1	B	2028	0	1986	24	0
2	A	41	0	0	2	0
2	B	41	0	0	0	0
3	A	8	0	0	1	0
3	B	4	0	0	0	0
All	All	4159	0	4015	60	0

The all-atom clashscore is defined as the number of clashes found per 1000 atoms (including hydrogen atoms). The all-atom clashscore for this structure is 7.

All (60) close contacts within the same asymmetric unit are listed below, sorted by their clash magnitude.

Atom-1	Atom-2	Interatomic distance (Å)	Clash overlap (Å)
1:B:297:PRO:HG2	1:B:302:SER:N	1.46	1.29
1:B:297:PRO:CG	1:B:302:SER:N	2.31	0.93
1:B:489:THR:C	1:B:491:MET:N	2.29	0.90
1:A:353:ILE:HG23	1:A:416:ILE:HD12	1.60	0.83
1:A:234:MET:SD	1:A:440:ASN:ND2	2.58	0.77
1:A:234:MET:H	1:A:443:GLN:HE22	1.35	0.72
1:A:234:MET:HE2	1:A:239:LEU:HD23	1.76	0.67
1:B:465:GLN:O	1:B:468:THR:HB	1.99	0.63
1:A:285:MET:O	1:A:289:LYS:HD2	2.00	0.62
1:B:311:GLN:HA	1:B:314:GLN:HG3	1.81	0.60
1:B:353:ILE:HG23	1:B:416:ILE:HD12	1.88	0.56
1:A:351:HIS:HE1	1:A:501:TYR:OH	1.88	0.55
1:A:353:ILE:HD13	1:A:416:ILE:HG23	1.89	0.55
1:B:352:GLU:HG3	1:B:474:VAL:HG21	1.90	0.54
1:B:307:ILE:HG12	1:B:491:MET:HE1	1.91	0.53
1:A:262:ARG:NH2	1:A:360:SER:O	2.41	0.52
1:A:502:LYS:O	1:A:503:ASP:C	2.52	0.52
1:B:469:ASP:O	1:B:472:GLN:N	2.45	0.50
1:A:396:PHE:O	1:A:400:VAL:HG23	2.12	0.50
1:B:254:PHE:CD1	1:B:357:MET:HE1	2.46	0.50
1:B:254:PHE:CG	1:B:357:MET:HE1	2.47	0.49
1:A:353:ILE:HG22	1:A:357:MET:HE2	1.95	0.49
1:B:484:ILE:HG13	1:B:485:LYS:N	2.29	0.47
1:A:316:ARG:HE	2:A:601:A1IQF:C1	2.27	0.47
1:B:251:ILE:HD12	1:B:257:THR:HG21	1.95	0.47
1:A:351:HIS:CE1	1:A:501:TYR:OH	2.67	0.47
1:B:494:HIS:HB3	1:B:497:LEU:HB2	1.97	0.46
1:A:395:LYS:HE2	2:A:601:A1IQF:C16	2.46	0.46
1:A:353:ILE:HD11	1:A:420:ILE:HG13	1.97	0.46
1:B:488:GLU:O	1:B:489:THR:C	2.58	0.46
1:A:407:LEU:HD11	1:A:463:LEU:HD13	1.99	0.45
1:A:468:THR:O	1:A:469:ASP:C	2.58	0.45
1:A:491:MET:HE2	1:A:491:MET:HB3	1.66	0.44
1:B:493:LEU:HD13	1:B:493:LEU:HA	1.68	0.44
1:A:469:ASP:OD1	1:A:469:ASP:N	2.47	0.44
1:A:466:LYS:C	1:A:468:THR:N	2.75	0.44
1:A:388:PHE:O	1:A:392:MET:HG2	2.19	0.43

Continued on next page...

Continued from previous page...

Atom-1	Atom-2	Interatomic distance (Å)	Clash overlap (Å)
1:B:269:THR:C	1:B:271:ASP:H	2.26	0.43
1:A:382:LYS:O	1:A:382:LYS:NZ	2.40	0.43
1:A:353:ILE:HD11	1:A:420:ILE:CG1	2.48	0.43
1:A:362:MET:HG2	1:A:367:VAL:HB	1.99	0.43
1:A:258:LYS:HG3	1:A:360:SER:HB3	2.01	0.43
1:B:496:LEU:HD12	1:B:496:LEU:HA	1.71	0.43
1:A:422:SER:HB3	1:A:424:ASP:OD1	2.19	0.43
1:A:258:LYS:NZ	3:A:701:HOH:O	2.50	0.42
1:A:475:THR:HA	1:A:478:VAL:HG22	2.02	0.42
1:B:304:GLU:HB3	1:B:307:ILE:HD12	2.02	0.42
1:B:494:HIS:O	1:B:498:GLN:HG3	2.20	0.42
1:A:355:TYR:CE2	1:A:395:LYS:HG3	2.55	0.41
1:A:461:ALA:O	1:A:465:GLN:HG3	2.20	0.41
1:A:481:LEU:HD23	1:A:481:LEU:HA	1.87	0.41
1:A:471:ARG:HA	1:A:471:ARG:HD3	1.90	0.41
1:B:430:ASN:O	1:B:433:PRO:HD2	2.21	0.41
1:A:338:ASP:OD2	1:A:340:ASN:ND2	2.53	0.41
1:B:386:LYS:CB	1:B:387:PRO:CD	2.98	0.41
1:A:310:PHE:HZ	1:A:481:LEU:HD21	1.86	0.41
1:B:386:LYS:CB	1:B:387:PRO:HD3	2.51	0.40
1:B:412:LEU:O	1:B:416:ILE:HG12	2.21	0.40
1:A:466:LYS:C	1:A:468:THR:H	2.28	0.40
1:A:234:MET:HE2	1:A:239:LEU:CD2	2.47	0.40

There are no symmetry-related clashes.

5.3 Torsion angles [i](#)

5.3.1 Protein backbone [i](#)

In the following table, the Percentiles column shows the percent Ramachandran outliers of the chain as a percentile score with respect to all X-ray entries followed by that with respect to entries of similar resolution.

The Analysed column shows the number of residues for which the backbone conformation was analysed, and the total number of residues.

Mol	Chain	Analysed	Favoured	Allowed	Outliers	Percentiles	
1	A	258/275 (94%)	251 (97%)	6 (2%)	1 (0%)	30	34
1	B	258/275 (94%)	245 (95%)	12 (5%)	1 (0%)	30	34

Continued on next page...

Continued from previous page...

Mol	Chain	Analysed	Favoured	Allowed	Outliers	Percentiles	
All	All	516/550 (94%)	496 (96%)	18 (4%)	2 (0%)	30	34

All (2) Ramachandran outliers are listed below:

Mol	Chain	Res	Type
1	B	386	LYS
1	A	386	LYS

5.3.2 Protein sidechains ⓘ

In the following table, the Percentiles column shows the percent sidechain outliers of the chain as a percentile score with respect to all X-ray entries followed by that with respect to entries of similar resolution.

The Analysed column shows the number of residues for which the sidechain conformation was analysed, and the total number of residues.

Mol	Chain	Analysed	Rotameric	Outliers	Percentiles	
1	A	216/247 (87%)	206 (95%)	10 (5%)	23	30
1	B	214/247 (87%)	204 (95%)	10 (5%)	22	29
All	All	430/494 (87%)	410 (95%)	20 (5%)	22	29

All (20) residues with a non-rotameric sidechain are listed below:

Mol	Chain	Res	Type
1	B	271	ASP
1	B	288	ASP
1	B	297	PRO
1	B	309	ILE
1	B	330	SER
1	B	484	ILE
1	B	491	MET
1	B	492	SER
1	B	493	LEU
1	B	496	LEU
1	A	273	SER
1	A	290	ILE
1	A	304	GLU
1	A	340	ASN
1	A	364	LYS
1	A	456	SER

Continued on next page...

Continued from previous page...

Mol	Chain	Res	Type
1	A	467	MET
1	A	469	ASP
1	A	475	THR
1	A	491	MET

Sometimes sidechains can be flipped to improve hydrogen bonding and reduce clashes. All (8) such sidechains are listed below:

Mol	Chain	Res	Type
1	B	314	GLN
1	B	340	ASN
1	A	233	HIS
1	A	351	HIS
1	A	373	GLN
1	A	440	ASN
1	A	443	GLN
1	A	458	GLN

5.3.3 RNA [i](#)

There are no RNA molecules in this entry.

5.4 Non-standard residues in protein, DNA, RNA chains [i](#)

There are no non-standard protein/DNA/RNA residues in this entry.

5.5 Carbohydrates [i](#)

There are no oligosaccharides in this entry.

5.6 Ligand geometry [i](#)

2 ligands are modelled in this entry.

In the following table, the Counts columns list the number of bonds (or angles) for which Mogul statistics could be retrieved, the number of bonds (or angles) that are observed in the model and the number of bonds (or angles) that are defined in the Chemical Component Dictionary. The Link column lists molecule types, if any, to which the group is linked. The Z score for a bond length (or angle) is the number of standard deviations the observed value is removed from the expected value. A bond length (or angle) with $|Z| > 2$ is considered an outlier worth inspection. RMSZ is the root-mean-square of all Z scores of the bond lengths (or angles).

Mol	Type	Chain	Res	Link	Bond lengths			Bond angles		
					Counts	RMSZ	# Z > 2	Counts	RMSZ	# Z > 2
2	A1IQF	B	601	-	41,45,45	0.78	1 (2%)	55,66,66	0.85	2 (3%)
2	A1IQF	A	601	-	41,45,45	0.74	1 (2%)	55,66,66	0.98	4 (7%)

In the following table, the Chirals column lists the number of chiral outliers, the number of chiral centers analysed, the number of these observed in the model and the number defined in the Chemical Component Dictionary. Similar counts are reported in the Torsion and Rings columns. '-' means no outliers of that kind were identified.

Mol	Type	Chain	Res	Link	Chirals	Torsions	Rings
2	A1IQF	B	601	-	-	3/22/40/40	0/5/5/5
2	A1IQF	A	601	-	-	8/22/40/40	0/5/5/5

All (2) bond length outliers are listed below:

Mol	Chain	Res	Type	Atoms	Z	Observed(Å)	Ideal(Å)
2	B	601	A1IQF	C6-N1	-3.28	1.32	1.35
2	A	601	A1IQF	C6-N1	-3.08	1.32	1.35

All (6) bond angle outliers are listed below:

Mol	Chain	Res	Type	Atoms	Z	Observed(°)	Ideal(°)
2	B	601	A1IQF	C20-C15-N2	-3.00	104.96	109.08
2	A	601	A1IQF	C20-C15-N2	-2.95	105.03	109.08
2	A	601	A1IQF	C8-C7-N2	2.46	118.94	116.14
2	B	601	A1IQF	C5-C6-C20	2.15	130.93	124.50
2	A	601	A1IQF	C19-C18-CL2	-2.03	117.10	119.64
2	A	601	A1IQF	C9-C8-C7	-2.00	118.79	121.19

There are no chirality outliers.

All (11) torsion outliers are listed below:

Mol	Chain	Res	Type	Atoms
2	A	601	A1IQF	O3-C7-C8-C9
2	A	601	A1IQF	O4-C22-C23-C24
2	B	601	A1IQF	C23-C22-O4-C21
2	B	601	A1IQF	C22-C23-C24-C29
2	A	601	A1IQF	C22-C23-C24-C25
2	A	601	A1IQF	C22-C23-C24-C29
2	B	601	A1IQF	C22-C23-C24-C25
2	A	601	A1IQF	C23-C22-O4-C21

Continued on next page...

Continued from previous page...

Mol	Chain	Res	Type	Atoms
2	A	601	A1IQF	N2-C7-C8-C9
2	A	601	A1IQF	O3-C7-C8-C13
2	A	601	A1IQF	N2-C7-C8-C13

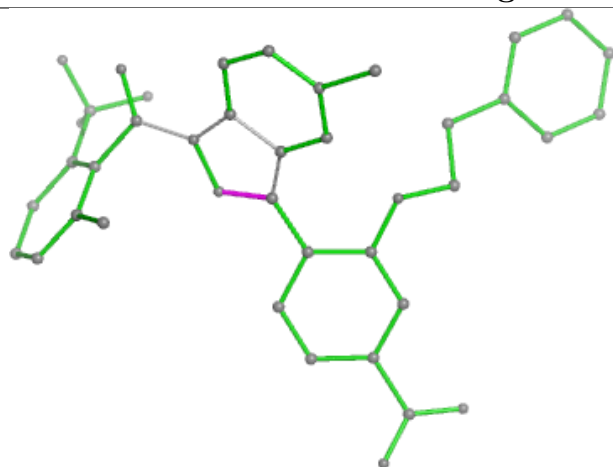
There are no ring outliers.

1 monomer is involved in 2 short contacts:

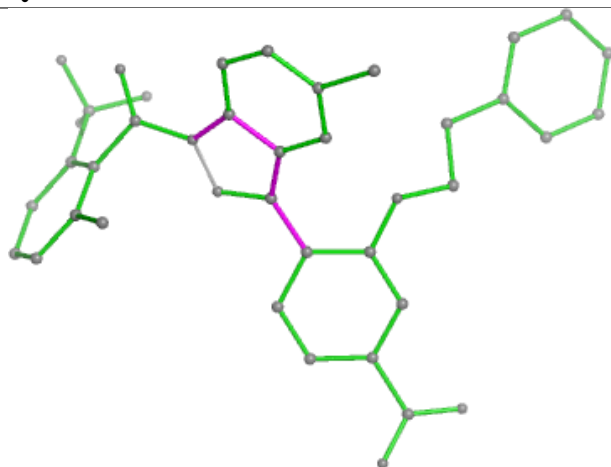
Mol	Chain	Res	Type	Clashes	Symm-Clashes
2	A	601	A1IQF	2	0

The following is a two-dimensional graphical depiction of Mogul quality analysis of bond lengths, bond angles, torsion angles, and ring geometry for all instances of the Ligand of Interest. In addition, ligands with molecular weight > 250 and outliers as shown on the validation Tables will also be included. For torsion angles, if less than 5% of the Mogul distribution of torsion angles is within 10 degrees of the torsion angle in question, then that torsion angle is considered an outlier. Any bond that is central to one or more torsion angles identified as an outlier by Mogul will be highlighted in the graph. For rings, the root-mean-square deviation (RMSD) between the ring in question and similar rings identified by Mogul is calculated over all ring torsion angles. If the average RMSD is greater than 60 degrees and the minimal RMSD between the ring in question and any Mogul-identified rings is also greater than 60 degrees, then that ring is considered an outlier. The outliers are highlighted in purple. The color gray indicates Mogul did not find sufficient equivalents in the CSD to analyse the geometry.

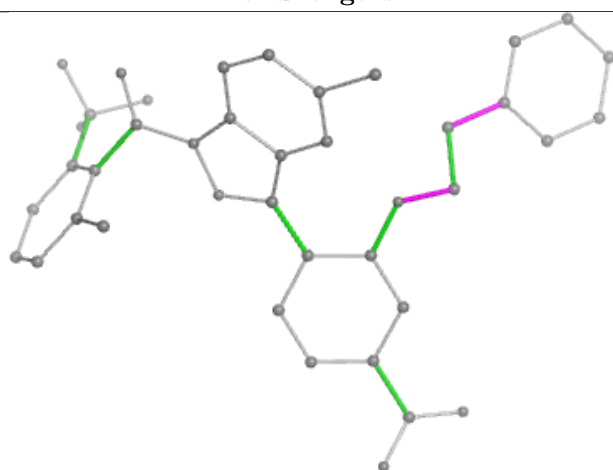
Ligand A1IQF B 601



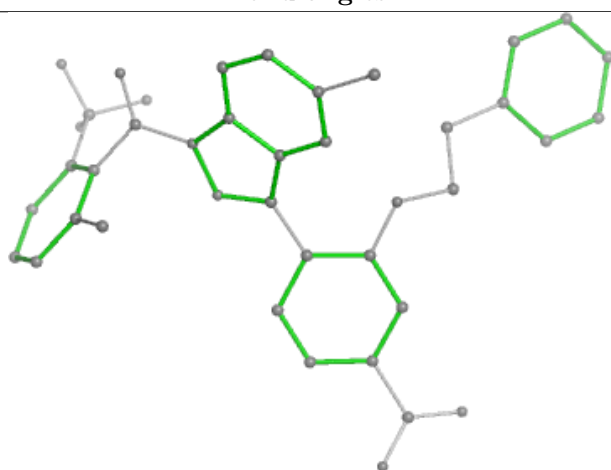
Bond lengths



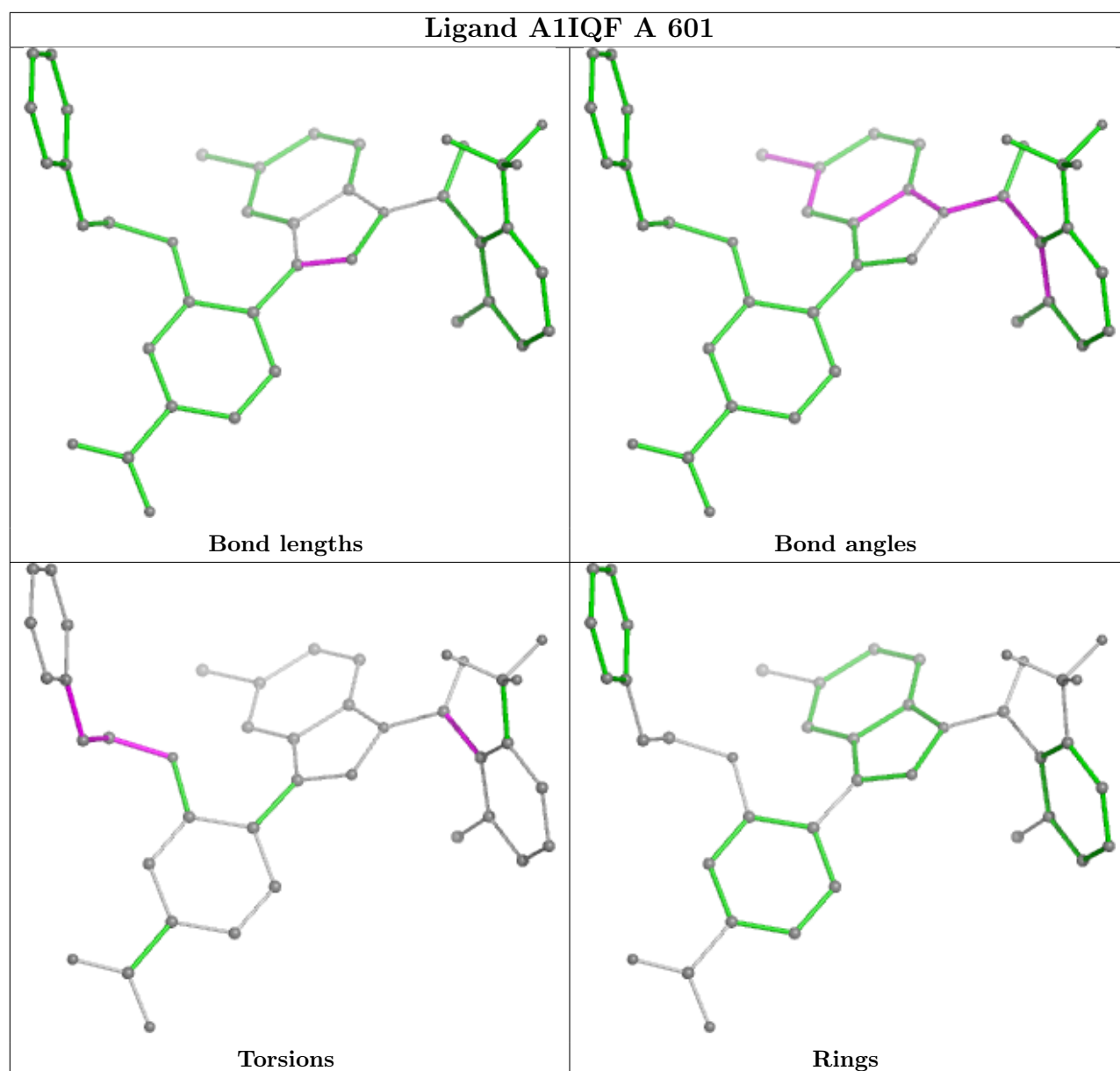
Bond angles



Torsions



Rings



5.7 Other polymers [i](#)

There are no such residues in this entry.

5.8 Polymer linkage issues [i](#)

There are no chain breaks in this entry.

6 Fit of model and data

6.1 Protein, DNA and RNA chains

In the following table, the column labelled ‘#RSRZ > 2’ contains the number (and percentage) of RSRZ outliers, followed by percent RSRZ outliers for the chain as percentile scores relative to all X-ray entries and entries of similar resolution. The OWAB column contains the minimum, median, 95th percentile and maximum values of the occupancy-weighted average B-factor per residue. The column labelled ‘Q < 0.9’ lists the number of (and percentage) of residues with an average occupancy less than 0.9.

Mol	Chain	Analysed	<RSRZ>	#RSRZ>2	OWAB(Å ²)	Q<0.9
1	A	264/275 (96%)	0.48	19 (7%) 23 20	48, 72, 120, 148	0
1	B	264/275 (96%)	0.38	18 (6%) 25 22	47, 68, 123, 172	0
All	All	528/550 (96%)	0.43	37 (7%) 24 21	47, 70, 122, 172	0

All (37) RSRZ outliers are listed below:

Mol	Chain	Res	Type	RSRZ
1	B	297	PRO	5.0
1	A	489	THR	4.8
1	B	295	ILE	4.7
1	B	493	LEU	4.2
1	B	296	THR	3.8
1	A	503	ASP	3.7
1	A	491	MET	3.6
1	A	268	LYS	3.5
1	A	294	HIS	3.4
1	A	295	ILE	3.1
1	B	270	THR	3.0
1	B	489	THR	3.0
1	B	275	PHE	3.0
1	B	302	SER	2.9
1	A	292	PHE	2.9
1	A	493	LEU	2.8
1	A	492	SER	2.8
1	A	270	THR	2.6
1	B	485	LYS	2.6
1	A	269	THR	2.5
1	A	293	LYS	2.5
1	B	294	HIS	2.5
1	B	494	HIS	2.5
1	A	487	THR	2.4

Continued on next page...

Continued from previous page...

Mol	Chain	Res	Type	RSRZ
1	B	487	THR	2.4
1	A	484	ILE	2.4
1	A	235	GLU	2.3
1	A	387	PRO	2.3
1	B	468	THR	2.2
1	B	491	MET	2.2
1	A	290	ILE	2.2
1	B	483	VAL	2.2
1	B	292	PHE	2.1
1	B	480	LEU	2.1
1	A	272	LYS	2.1
1	B	481	LEU	2.1
1	A	390	ASP	2.0

6.2 Non-standard residues in protein, DNA, RNA chains [i](#)

There are no non-standard protein/DNA/RNA residues in this entry.

6.3 Carbohydrates [i](#)

There are no oligosaccharides in this entry.

6.4 Ligands [i](#)

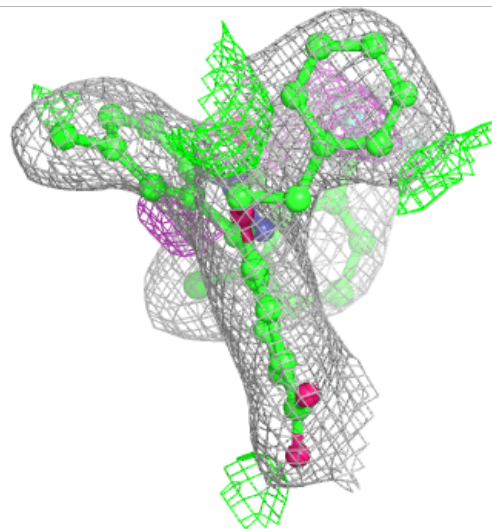
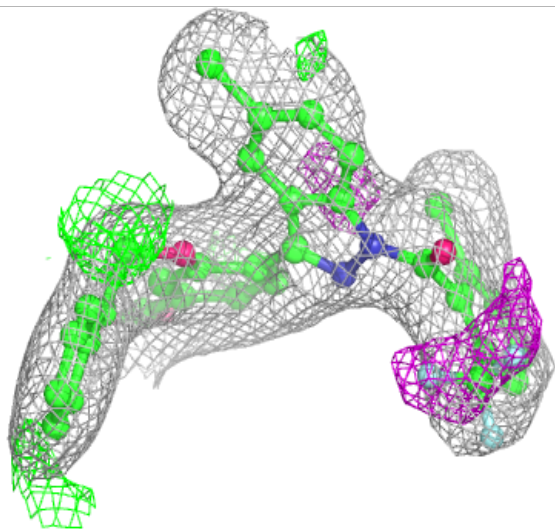
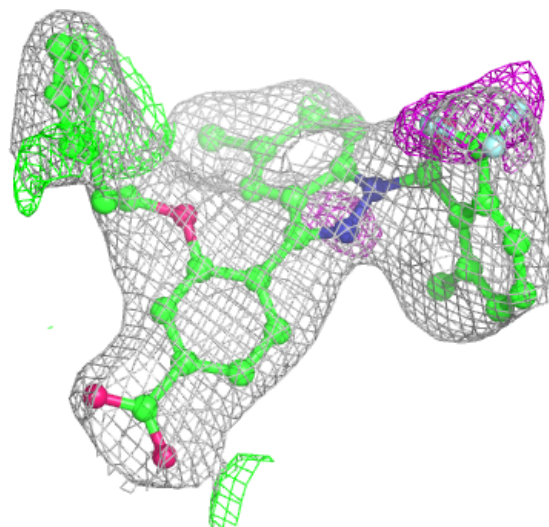
In the following table, the Atoms column lists the number of modelled atoms in the group and the number defined in the chemical component dictionary. The B-factors column lists the minimum, median, 95th percentile and maximum values of B factors of atoms in the group. The column labelled 'Q< 0.9' lists the number of atoms with occupancy less than 0.9.

Mol	Type	Chain	Res	Atoms	RSCC	RSR	B-factors(\AA^2)	Q<0.9
2	A1IQF	A	601	41/41	0.86	0.13	64,77,88,92	0
2	A1IQF	B	601	41/41	0.94	0.09	56,67,73,74	0

The following is a graphical depiction of the model fit to experimental electron density of all instances of the Ligand of Interest. In addition, ligands with molecular weight > 250 and outliers as shown on the geometry validation Tables will also be included. Each fit is shown from different orientation to approximate a three-dimensional view.

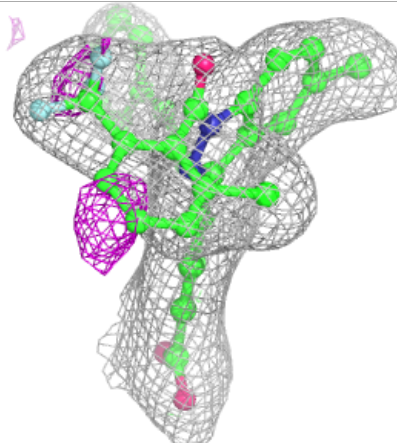
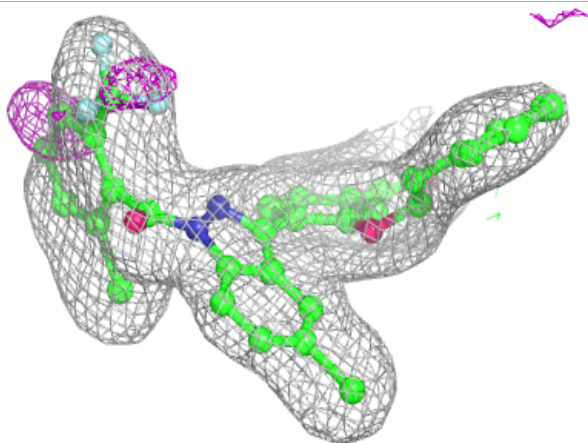
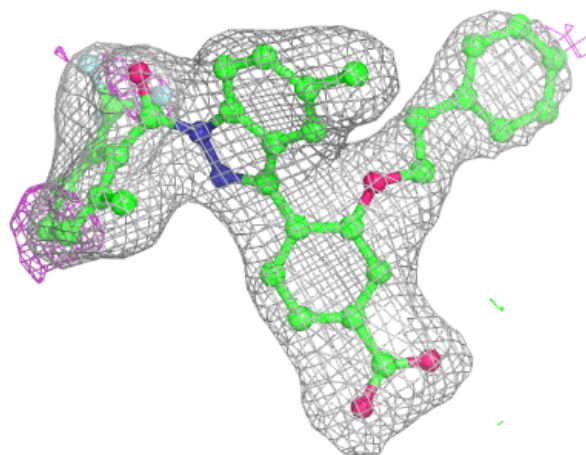
Electron density around A1IQF A 601:

$2mF_o-DF_c$ (at 0.7 rmsd) in gray
 mF_o-DF_c (at 3 rmsd) in purple (negative)
and green (positive)



Electron density around A1IQF B 601:

$2mF_o-DF_c$ (at 0.7 rmsd) in gray
 mF_o-DF_c (at 3 rmsd) in purple (negative)
and green (positive)



6.5 Other polymers [i](#)

There are no such residues in this entry.