



Full wwPDB X-ray Structure Validation Report ⓘ

Sep 23, 2025 – 01:43 am BST

PDB ID : 9GY3 / pdb_00009gy3
Title : Crystal structure of CRBNmidi in complex with (S)-dHTC1
Authors : Rutter, Z.J.; Shaum, J.B.; Ciulli, A.; Erb, M.A.
Deposited on : 2024-10-01
Resolution : 2.50 Å(reported)

This is a Full wwPDB X-ray Structure Validation Report for a publicly released PDB entry.

We welcome your comments at validation@mail.wwpdb.org

A user guide is available at

<https://www.wwpdb.org/validation/2017/XrayValidationReportHelp>

with specific help available everywhere you see the ⓘ symbol.

The types of validation reports are described at

<http://www.wwpdb.org/validation/2017/FAQs#types>.

The following versions of software and data (see [references ⓘ](#)) were used in the production of this report:

MolProbity : 4-5-2 with Phenix2.0
Mogul : 1.8.4, CSD as541be (2020)
Xtriage (Phenix) : 2.0
EDS : 3.0
buster-report : 1.1.7 (2018)
Percentile statistics : 20231227.v01 (using entries in the PDB archive December 27th 2023)
CCP4 : 9.0.010 (Gargrove)
Density-Fitness : 1.0.12
Ideal geometry (proteins) : Engh & Huber (2001)
Ideal geometry (DNA, RNA) : Parkinson et al. (1996)
Validation Pipeline (wwPDB-VP) : 2.46

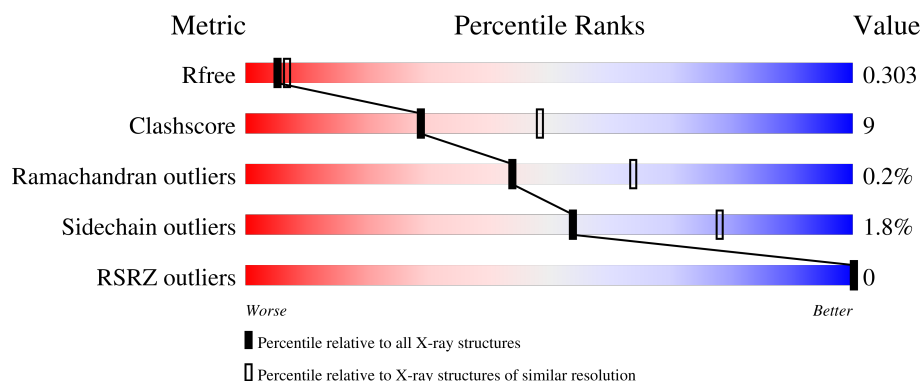
1 Overall quality at a glance

The following experimental techniques were used to determine the structure:

X-RAY DIFFRACTION



The reported resolution of this entry is 2.50 Å.

Percentile scores (ranging between 0-100) for global validation metrics of the entry are shown in the following graphic. The table shows the number of entries on which the scores are based.



Metric	Whole archive (#Entries)	Similar resolution (#Entries, resolution range(Å))
R_{free}	164625	5504 (2.50-2.50)
Clashscore	180529	6282 (2.50-2.50)
Ramachandran outliers	177936	6191 (2.50-2.50)
Sidechain outliers	177891	6193 (2.50-2.50)
RSRZ outliers	164620	5504 (2.50-2.50)

The table below summarises the geometric issues observed across the polymeric chains and their fit to the electron density. The red, orange, yellow and green segments of the lower bar indicate the fraction of residues that contain outliers for ≥ 3 , 2, 1 and 0 types of geometric quality criteria respectively. A grey segment represents the fraction of residues that are not modelled. The numeric value for each fraction is indicated below the corresponding segment, with a dot representing fractions $\leq 5\%$. The upper red bar (where present) indicates the fraction of residues that have poor fit to the electron density. The numeric value is given above the bar.

Mol	Chain	Length	Quality of chain
1	A	329	
1	C	329	

2 Entry composition

There are 4 unique types of molecules in this entry. The entry contains 5240 atoms, of which 0 are hydrogens and 0 are deuteriums.

In the tables below, the ZeroOcc column contains the number of atoms modelled with zero occupancy, the AltConf column contains the number of residues with at least one atom in alternate conformation and the Trace column contains the number of residues modelled with at most 2 atoms.

- Molecule 1 is a protein called Protein cereblon.

Mol	Chain	Residues	Atoms					ZeroOcc	AltConf	Trace
1	A	319	Total	C	N	O	S	0	0	0
			2534	1607	431	480	16			
1	C	319	Total	C	N	O	S	0	0	0
			2541	1610	434	481	16			

There are 32 discrepancies between the modelled and reference sequences:

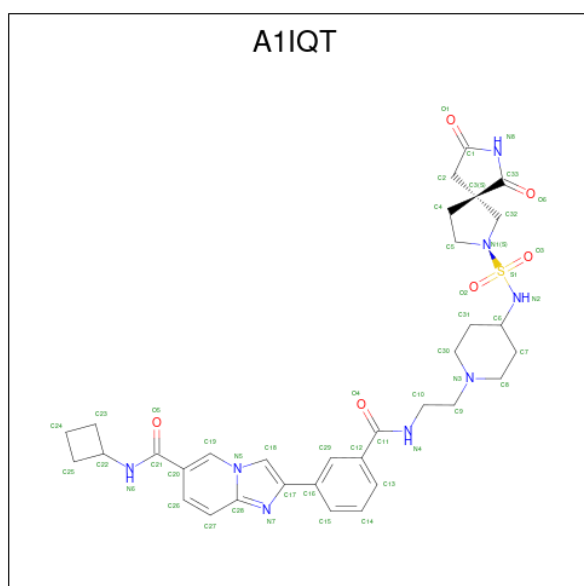
Chain	Residue	Modelled	Actual	Comment	Reference
A	40	SER	-	expression tag	UNP Q96SW2
A	78	ILE	CYS	engineered mutation	UNP Q96SW2
A	92	VAL	ILE	engineered mutation	UNP Q96SW2
A	116	ASN	LYS	engineered mutation	UNP Q96SW2
A	134	GLU	GLN	engineered mutation	UNP Q96SW2
A	188	GLY	-	linker	UNP Q96SW2
A	189	SER	-	linker	UNP Q96SW2
A	190	GLY	-	linker	UNP Q96SW2
A	283	TRP	ARG	engineered mutation	UNP Q96SW2
A	287	ASN	CYS	engineered mutation	UNP Q96SW2
A	293	SER	VAL	engineered mutation	UNP Q96SW2
A	302	ASP	GLY	engineered mutation	UNP Q96SW2
A	342	ARG	LEU	engineered mutation	UNP Q96SW2
A	343	GLU	CYS	engineered mutation	UNP Q96SW2
A	359	ILE	THR	engineered mutation	UNP Q96SW2
A	423	ILE	LEU	engineered mutation	UNP Q96SW2
C	40	SER	-	expression tag	UNP Q96SW2
C	78	ILE	CYS	engineered mutation	UNP Q96SW2
C	92	VAL	ILE	engineered mutation	UNP Q96SW2
C	116	ASN	LYS	engineered mutation	UNP Q96SW2
C	134	GLU	GLN	engineered mutation	UNP Q96SW2
C	188	GLY	-	linker	UNP Q96SW2
C	189	SER	-	linker	UNP Q96SW2
C	190	GLY	-	linker	UNP Q96SW2
C	283	TRP	ARG	engineered mutation	UNP Q96SW2

Continued on next page...

Continued from previous page...

Chain	Residue	Modelled	Actual	Comment	Reference
C	287	ASN	CYS	engineered mutation	UNP Q96SW2
C	293	SER	VAL	engineered mutation	UNP Q96SW2
C	302	ASP	GLY	engineered mutation	UNP Q96SW2
C	342	ARG	LEU	engineered mutation	UNP Q96SW2
C	343	GLU	CYS	engineered mutation	UNP Q96SW2
C	359	ILE	THR	engineered mutation	UNP Q96SW2
C	423	ILE	LEU	engineered mutation	UNP Q96SW2

- Molecule 2 is 2-[3-[2-[4-[(5 {S})-1,3-bis(oxidanylidene)-2,7-diazaspiro[4.4]nonan-7-yl)sulfonylamino]piperidin-1-yl]ethylcarbamoyl]phenyl]- {N}-cyclobutyl-imidazo[1,2-a]pyridine-6-carboxamide (CCD ID: A1IQT) (formula: C₃₃H₄₀N₈O₆S) (labeled as "Ligand of Interest" by depositor).



Mol	Chain	Residues	Atoms				ZeroOcc	AltConf
2	A	1	Total	C	N	O	S	
			48	33	8	6	1	0
2	C	1	Total	C	N	O	S	
			48	33	8	6	1	0

- Molecule 3 is ZINC ION (CCD ID: ZN) (formula: Zn).

Mol	Chain	Residues	Atoms		ZeroOcc	AltConf
3	A	1	Total	Zn		
			1	1	0	0
3	C	1	Total	Zn		
			1	1	0	0

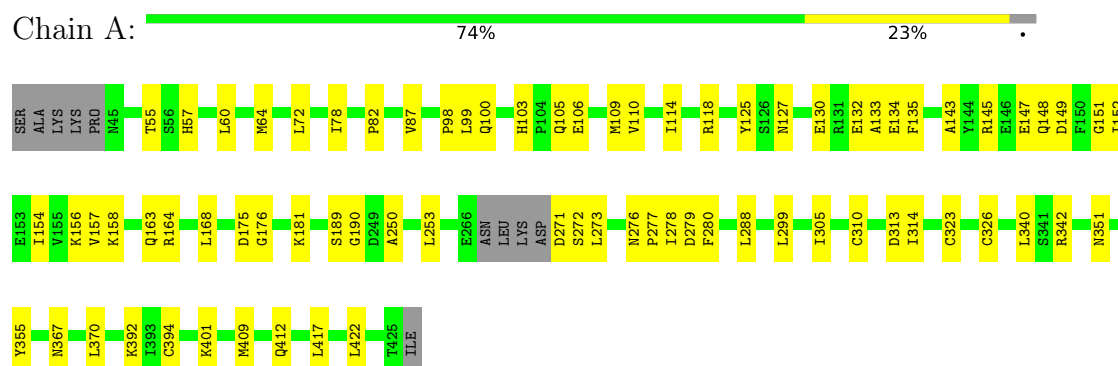
- Molecule 4 is water.

Mol	Chain	Residues	Atoms		ZeroOcc	AltConf
4	A	35	Total 35	O 35	0	0
4	C	32	Total 32	O 32	0	0

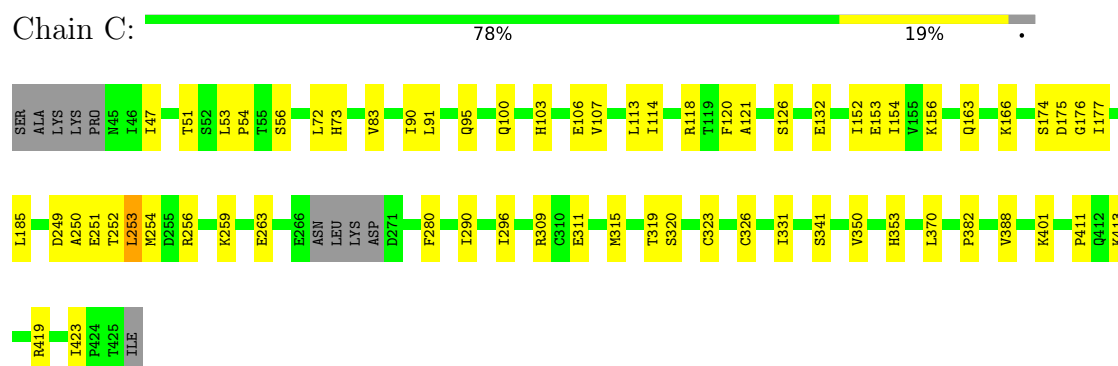
3 Residue-property plots

These plots are drawn for all protein, RNA, DNA and oligosaccharide chains in the entry. The first graphic for a chain summarises the proportions of the various outlier classes displayed in the second graphic. The second graphic shows the sequence view annotated by issues in geometry and electron density. Residues are color-coded according to the number of geometric quality criteria for which they contain at least one outlier: green = 0, yellow = 1, orange = 2 and red = 3 or more. A red dot above a residue indicates a poor fit to the electron density ($RSRZ > 2$). Stretches of 2 or more consecutive residues without any outlier are shown as a green connector. Residues present in the sample, but not in the model, are shown in grey.

• Molecule 1: Protein cereblon



• Molecule 1: Protein cereblon



4 Data and refinement statistics

Property	Value	Source
Space group	P 31	Depositor
Cell constants a, b, c, α , β , γ	53.50Å 53.50Å 236.12Å 90.00° 90.00° 120.00°	Depositor
Resolution (Å)	43.13 – 2.50 43.13 – 2.50	Depositor EDS
% Data completeness (in resolution range)	98.3 (43.13-2.50) 100.0 (43.13-2.50)	Depositor EDS
R_{merge}	(Not available)	Depositor
R_{sym}	(Not available)	Depositor
$\langle I/\sigma(I) \rangle$ ¹	1.22 (at 2.51Å)	Xtriage
Refinement program	PHENIX 1.19.2_4158-000	Depositor
R, R_{free}	0.244 , 0.303 0.248 , 0.303	Depositor DCC
R_{free} test set	1253 reflections (4.78%)	wwPDB-VP
Wilson B-factor (Å ²)	44.0	Xtriage
Anisotropy	0.575	Xtriage
Bulk solvent k_{sol} (e/Å ³), B_{sol} (Å ²)	0.34 , 35.4	EDS
L-test for twinning ²	$\langle L \rangle = 0.49$, $\langle L^2 \rangle = 0.32$	Xtriage
Estimated twinning fraction	0.036 for -h,-k,l 0.437 for h,-h-k,-l 0.047 for -k,-h,-l	Xtriage
F_o, F_c correlation	0.95	EDS
Total number of atoms	5240	wwPDB-VP
Average B, all atoms (Å ²)	56.0	wwPDB-VP

Xtriage's analysis on translational NCS is as follows: *The largest off-origin peak in the Patterson function is 6.07% of the height of the origin peak. No significant pseudotranslation is detected.*

¹Intensities estimated from amplitudes.

²Theoretical values of $\langle |L| \rangle$, $\langle L^2 \rangle$ for acentric reflections are 0.5, 0.333 respectively for untwinned datasets, and 0.375, 0.2 for perfectly twinned datasets.

5 Model quality

5.1 Standard geometry

Bond lengths and bond angles in the following residue types are not validated in this section: ZN, A1IQT

The Z score for a bond length (or angle) is the number of standard deviations the observed value is removed from the expected value. A bond length (or angle) with $|Z| > 5$ is considered an outlier worth inspection. RMSZ is the root-mean-square of all Z scores of the bond lengths (or angles).

Mol	Chain	Bond lengths		Bond angles	
		RMSZ	$\# Z > 5$	RMSZ	$\# Z > 5$
1	A	0.11	0/2589	0.28	0/3516
1	C	0.10	0/2596	0.28	0/3522
All	All	0.11	0/5185	0.28	0/7038

There are no bond length outliers.

There are no bond angle outliers.

There are no chirality outliers.

There are no planarity outliers.

5.2 Too-close contacts

In the following table, the Non-H and H(model) columns list the number of non-hydrogen atoms and hydrogen atoms in the chain respectively. The H(added) column lists the number of hydrogen atoms added and optimized by MolProbity. The Clashes column lists the number of clashes within the asymmetric unit, whereas Symm-Clashes lists symmetry-related clashes.

Mol	Chain	Non-H	H(model)	H(added)	Clashes	Symm-Clashes
1	A	2534	0	2486	50	0
1	C	2541	0	2498	38	0
2	A	48	0	0	0	0
2	C	48	0	0	1	0
3	A	1	0	0	0	0
3	C	1	0	0	0	0
4	A	35	0	0	0	0
4	C	32	0	0	1	0
All	All	5240	0	4984	87	0

The all-atom clashscore is defined as the number of clashes found per 1000 atoms (including hydrogen atoms). The all-atom clashscore for this structure is 9.

All (87) close contacts within the same asymmetric unit are listed below, sorted by their clash magnitude.

Atom-1	Atom-2	Interatomic distance (Å)	Clash overlap (Å)
1:C:73:HIS:H	1:C:163:GLN:HE22	1.21	0.88
1:A:152:ILE:HG13	1:A:154:ILE:HD11	1.64	0.79
1:A:64:MET:HG2	1:A:145:ARG:HB2	1.68	0.75
1:A:78:ILE:HD12	1:A:168:LEU:HD11	1.75	0.67
1:C:290:ILE:O	1:C:419:ARG:NH1	2.27	0.65
1:A:55:THR:HG21	1:A:342:ARG:HB2	1.79	0.65
1:A:103:HIS:HB3	1:A:106:GLU:HG3	1.79	0.63
1:A:164:ARG:NH1	1:A:299:LEU:O	2.31	0.63
1:C:54:PRO:HB2	1:C:341:SER:HB2	1.81	0.62
1:A:175:ASP:OD1	1:A:176:GLY:N	2.33	0.60
1:A:250:ALA:HB1	1:A:253:LEU:HD23	1.83	0.59
1:C:319:THR:OG1	1:C:320:SER:N	2.36	0.58
1:C:253:LEU:HD23	1:C:309:ARG:HH21	1.68	0.58
1:A:367:ASN:HA	1:A:392:LYS:HD2	1.85	0.57
1:C:113:LEU:HD23	1:C:118:ARG:HA	1.87	0.56
1:C:166:LYS:HE2	1:C:185:LEU:HD21	1.86	0.56
1:A:130:GLU:HB3	1:A:132:GLU:HG3	1.87	0.56
1:A:370:LEU:HD11	1:A:401:LYS:HD3	1.89	0.55
1:C:90:ILE:HD13	1:C:296:ILE:HG13	1.89	0.54
1:A:323:CYS:SG	1:A:326:CYS:HB2	2.47	0.54
1:A:409:MET:O	1:A:412:GLN:NE2	2.41	0.54
1:A:250:ALA:HB3	1:A:305:ILE:HD12	1.88	0.54
1:A:127:ASN:HB3	1:A:130:GLU:HB2	1.89	0.53
1:A:100:GLN:HG3	1:A:156:LYS:HG2	1.90	0.53
1:C:100:GLN:HG2	1:C:156:LYS:HG2	1.90	0.53
1:A:82:PRO:HB2	1:A:109:MET:HE2	1.91	0.53
1:C:53:LEU:HD22	1:C:382:PRO:HG2	1.91	0.52
1:A:64:MET:HE1	1:A:158:LYS:HG3	1.92	0.51
1:A:134:GLU:HG3	1:A:135:PHE:CD1	2.45	0.51
1:C:323:CYS:SG	1:C:326:CYS:HB2	2.49	0.51
1:C:252:THR:O	1:C:256:ARG:HG3	2.11	0.51
1:C:103:HIS:HB3	1:C:106:GLU:HG3	1.92	0.51
1:A:134:GLU:HG3	1:A:135:PHE:HD1	1.76	0.50
1:A:351:ASN:OD1	1:A:355:TYR:N	2.44	0.49
1:C:370:LEU:HD11	1:C:401:LYS:HB3	1.94	0.48
1:A:276:ASN:HD22	1:A:277:PRO:HD2	1.78	0.48
1:C:175:ASP:OD2	1:C:176:GLY:N	2.47	0.48
1:C:175:ASP:OD2	1:C:177:ILE:HD12	2.14	0.48
1:A:64:MET:HE3	1:A:143:ALA:HB1	1.94	0.48
1:A:125:TYR:HA	1:A:133:ALA:HB2	1.96	0.48

Continued on next page...

Continued from previous page...

Atom-1	Atom-2	Interatomic distance (Å)	Clash overlap (Å)
1:C:113:LEU:HD11	1:C:120:PHE:HB3	1.96	0.47
1:C:249:ASP:O	1:C:251:GLU:N	2.48	0.47
1:A:417:LEU:HB2	1:A:422:LEU:HD11	1.97	0.46
1:C:311:GLU:O	1:C:315:MET:HG2	2.15	0.46
1:A:168:LEU:HD12	1:A:181:LYS:HG2	1.96	0.46
1:A:326:CYS:SG	1:A:394:CYS:HB3	2.56	0.46
1:C:126:SER:OG	1:C:132:GLU:OE1	2.32	0.46
1:A:145:ARG:HD3	1:A:147:GLU:HG3	1.97	0.45
1:A:271:ASP:HB3	1:A:272:SER:H	1.51	0.45
1:C:166:LYS:HE2	1:C:166:LYS:HB2	1.65	0.45
1:C:47:ILE:HD13	1:C:411:PRO:HD3	1.99	0.45
1:A:273:LEU:HD13	1:A:280:PHE:HE2	1.81	0.44
1:C:114:ILE:HD12	1:C:118:ARG:HG2	1.99	0.44
1:A:310:CYS:O	1:A:313:ASP:N	2.48	0.44
1:C:154:ILE:HD13	1:C:154:ILE:HA	1.79	0.44
1:C:353:HIS:HE1	2:C:501:A1IQT:C21	2.30	0.44
1:C:177:ILE:HD12	1:C:177:ILE:H	1.83	0.44
1:A:99:LEU:HB2	1:A:157:VAL:HG22	1.99	0.44
1:A:60:LEU:HA	1:A:60:LEU:HD12	1.85	0.43
1:A:145:ARG:NH1	1:A:147:GLU:OE2	2.50	0.43
1:A:114:ILE:HA	1:A:118:ARG:HG2	2.00	0.43
1:C:423:ILE:O	1:C:423:ILE:HG13	2.17	0.43
1:C:259:LYS:O	1:C:263:GLU:HG3	2.17	0.43
1:A:189:SER:HB2	1:A:278:ILE:HG13	1.99	0.43
1:A:342:ARG:HD3	1:A:342:ARG:HA	1.75	0.43
1:A:57:HIS:HB2	1:A:158:LYS:HD3	2.01	0.43
1:A:276:ASN:HD22	1:A:277:PRO:N	2.17	0.43
1:A:103:HIS:CE1	1:A:105:GLN:HE21	2.37	0.43
1:A:276:ASN:HB3	1:A:279:ASP:HB2	2.01	0.43
1:C:152:ILE:HD12	1:C:153:GLU:H	1.83	0.42
1:C:254:MET:HG3	1:C:280:PHE:CD2	2.54	0.42
1:A:276:ASN:HD22	1:A:277:PRO:CD	2.31	0.42
1:C:114:ILE:HD12	1:C:114:ILE:HA	1.91	0.42
1:A:106:GLU:O	1:A:110:VAL:HG22	2.20	0.42
1:A:148:GLN:HB3	1:A:149:ASP:H	1.60	0.42
1:C:91:LEU:HD12	1:C:95:GLN:HE21	1.85	0.42
1:A:87:VAL:HG22	1:A:99:LEU:HD21	2.02	0.42
1:A:57:HIS:CE1	1:A:98:PRO:HG3	2.55	0.41
1:C:83:VAL:HG22	1:C:121:ALA:HB3	2.02	0.41
1:C:413:LYS:NZ	4:C:603:HOH:O	2.38	0.41
1:A:151:GLY:HA3	1:C:388:VAL:HG21	2.02	0.41

Continued on next page...

Continued from previous page...

Atom-1	Atom-2	Interatomic distance (Å)	Clash overlap (Å)
1:C:253:LEU:HD13	1:C:253:LEU:HA	1.86	0.41
1:C:103:HIS:O	1:C:107:VAL:HG23	2.20	0.41
1:A:189:SER:OG	1:A:190:GLY:N	2.54	0.41
1:C:73:HIS:N	1:C:163:GLN:HE22	2.03	0.41
1:A:310:CYS:O	1:A:314:ILE:HD12	2.22	0.40
1:A:288:LEU:HD23	1:A:288:LEU:HA	1.93	0.40

There are no symmetry-related clashes.

5.3 Torsion angles [i](#)

5.3.1 Protein backbone [i](#)

In the following table, the Percentiles column shows the percent Ramachandran outliers of the chain as a percentile score with respect to all X-ray entries followed by that with respect to entries of similar resolution.

The Analysed column shows the number of residues for which the backbone conformation was analysed, and the total number of residues.

Mol	Chain	Analysed	Favoured	Allowed	Outliers	Percentiles	
1	A	315/329 (96%)	298 (95%)	17 (5%)	0	100	100
1	C	315/329 (96%)	299 (95%)	15 (5%)	1 (0%)	37	56
All	All	630/658 (96%)	597 (95%)	32 (5%)	1 (0%)	44	64

All (1) Ramachandran outliers are listed below:

Mol	Chain	Res	Type
1	C	250	ALA

5.3.2 Protein sidechains [i](#)

In the following table, the Percentiles column shows the percent sidechain outliers of the chain as a percentile score with respect to all X-ray entries followed by that with respect to entries of similar resolution.

The Analysed column shows the number of residues for which the sidechain conformation was analysed, and the total number of residues.

Mol	Chain	Analysed	Rotameric	Outliers	Percentiles	
1	A	280/293 (96%)	277 (99%)	3 (1%)	70	87
1	C	281/293 (96%)	274 (98%)	7 (2%)	42	69
All	All	561/586 (96%)	551 (98%)	10 (2%)	54	78

All (10) residues with a non-rotameric sidechain are listed below:

Mol	Chain	Res	Type
1	A	72	LEU
1	A	163	GLN
1	A	340	LEU
1	C	51	THR
1	C	56	SER
1	C	72	LEU
1	C	174	SER
1	C	253	LEU
1	C	331	ILE
1	C	350	VAL

Sometimes sidechains can be flipped to improve hydrogen bonding and reduce clashes. All (14) such sidechains are listed below:

Mol	Chain	Res	Type
1	A	100	GLN
1	A	127	ASN
1	A	173	GLN
1	A	276	ASN
1	A	297	GLN
1	A	412	GLN
1	C	95	GLN
1	C	115	GLN
1	C	148	GLN
1	C	163	GLN
1	C	260	GLN
1	C	353	HIS
1	C	397	HIS
1	C	412	GLN

5.3.3 RNA ⓘ

There are no RNA molecules in this entry.

5.4 Non-standard residues in protein, DNA, RNA chains [i](#)

There are no non-standard protein/DNA/RNA residues in this entry.

5.5 Carbohydrates [i](#)

There are no oligosaccharides in this entry.

5.6 Ligand geometry [i](#)

Of 4 ligands modelled in this entry, 2 are monoatomic - leaving 2 for Mogul analysis.

In the following table, the Counts columns list the number of bonds (or angles) for which Mogul statistics could be retrieved, the number of bonds (or angles) that are observed in the model and the number of bonds (or angles) that are defined in the Chemical Component Dictionary. The Link column lists molecule types, if any, to which the group is linked. The Z score for a bond length (or angle) is the number of standard deviations the observed value is removed from the expected value. A bond length (or angle) with $|Z| > 2$ is considered an outlier worth inspection. RMSZ is the root-mean-square of all Z scores of the bond lengths (or angles).

Mol	Type	Chain	Res	Link	Bond lengths			Bond angles		
					Counts	RMSZ	# Z > 2	Counts	RMSZ	# Z > 2
2	A1IQT	C	501	-	51,54,54	0.41	0	61,80,80	1.27	6 (9%)
2	A1IQT	A	501	-	51,54,54	0.41	0	61,80,80	1.00	5 (8%)

In the following table, the Chirals column lists the number of chiral outliers, the number of chiral centers analysed, the number of these observed in the model and the number defined in the Chemical Component Dictionary. Similar counts are reported in the Torsion and Rings columns. '-' means no outliers of that kind were identified.

Mol	Type	Chain	Res	Link	Chirals	Torsions	Rings
2	A1IQT	C	501	-	-	6/31/75/75	0/7/7/7
2	A1IQT	A	501	-	-	3/31/75/75	1/7/7/7

There are no bond length outliers.

All (11) bond angle outliers are listed below:

Mol	Chain	Res	Type	Atoms	Z	Observed(°)	Ideal(°)
2	C	501	A1IQT	C22-N6-C21	5.62	130.32	122.55
2	A	501	A1IQT	C2-C3-C33	-3.39	101.11	103.38
2	C	501	A1IQT	C20-C21-N6	3.00	122.81	117.06
2	A	501	A1IQT	C24-C23-C22	-2.80	85.93	88.37

Continued on next page...

Continued from previous page...

Mol	Chain	Res	Type	Atoms	Z	Observed(°)	Ideal(°)
2	C	501	A1IQT	C24-C25-C22	-2.80	85.93	88.37
2	C	501	A1IQT	C24-C23-C22	-2.79	85.94	88.37
2	A	501	A1IQT	C24-C25-C22	-2.77	85.96	88.37
2	A	501	A1IQT	C3-C2-C1	-2.70	103.79	106.14
2	C	501	A1IQT	C3-C32-N1	2.70	106.32	102.73
2	A	501	A1IQT	C3-C32-N1	2.06	105.47	102.73
2	C	501	A1IQT	C17-C18-N5	-2.04	105.81	107.89

There are no chirality outliers.

All (9) torsion outliers are listed below:

Mol	Chain	Res	Type	Atoms
2	C	501	A1IQT	C32-N1-S1-O3
2	C	501	A1IQT	C20-C21-N6-C22
2	C	501	A1IQT	O5-C21-N6-C22
2	A	501	A1IQT	C32-N1-S1-O3
2	A	501	A1IQT	C6-N2-S1-O3
2	A	501	A1IQT	C32-N1-S1-O2
2	C	501	A1IQT	C5-N1-S1-O3
2	C	501	A1IQT	C25-C22-N6-C21
2	C	501	A1IQT	C26-C20-C21-N6

All (1) ring outliers are listed below:

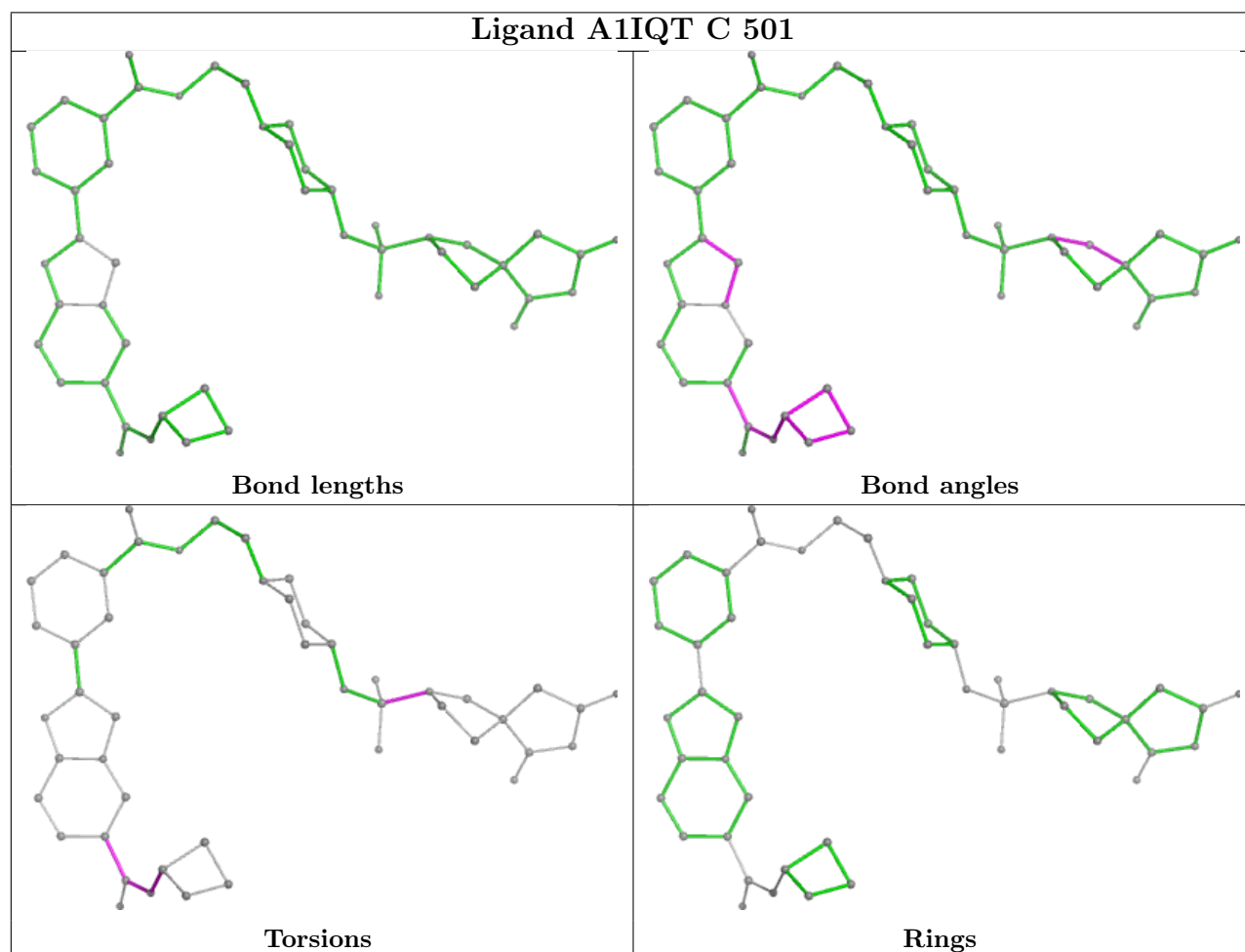
Mol	Chain	Res	Type	Atoms
2	A	501	A1IQT	C30-C31-C6-C7-C8-N3

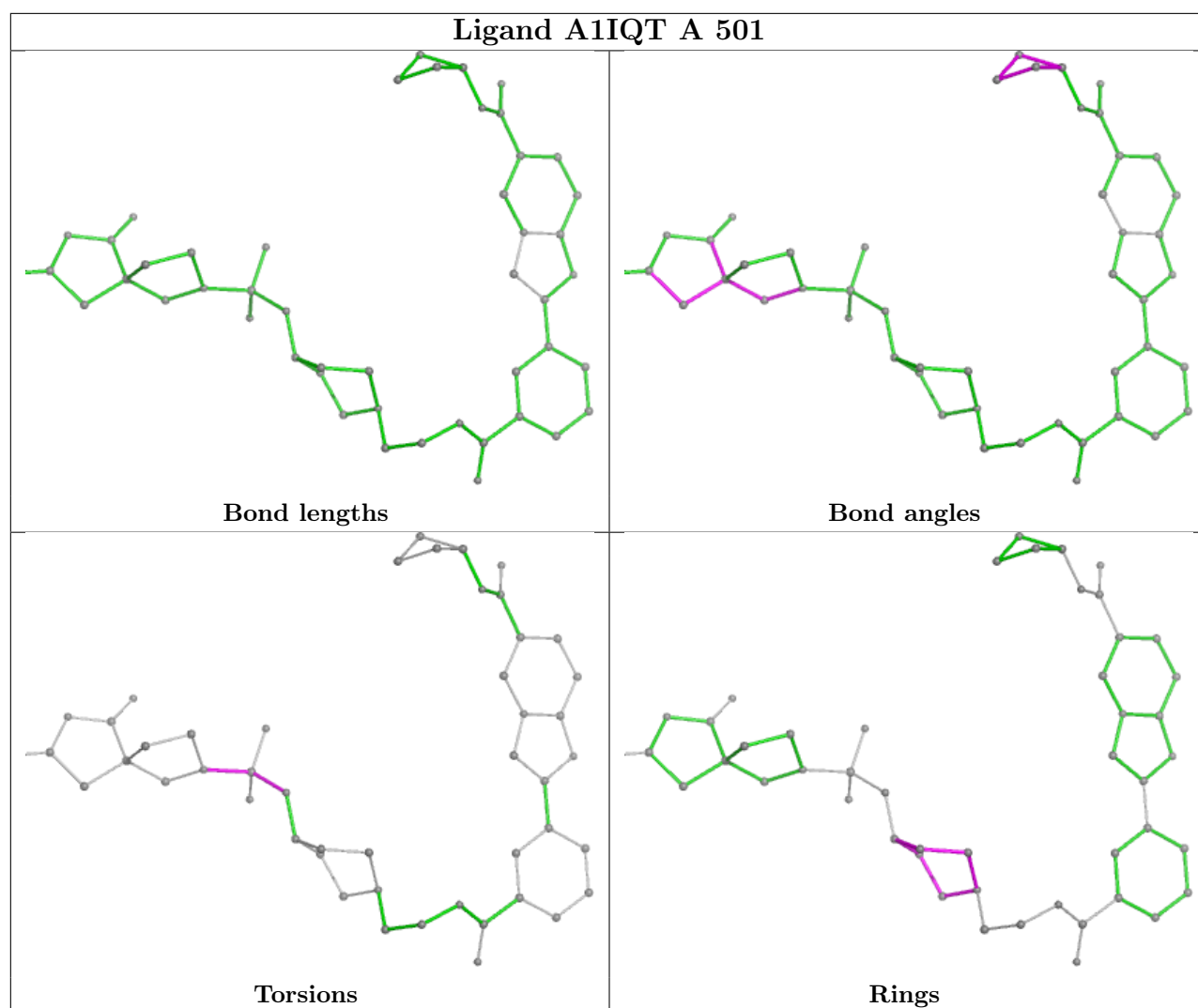
1 monomer is involved in 1 short contact:

Mol	Chain	Res	Type	Clashes	Symm-Clashes
2	C	501	A1IQT	1	0

The following is a two-dimensional graphical depiction of Mogul quality analysis of bond lengths, bond angles, torsion angles, and ring geometry for all instances of the Ligand of Interest. In addition, ligands with molecular weight > 250 and outliers as shown on the validation Tables will also be included. For torsion angles, if less than 5% of the Mogul distribution of torsion angles is within 10 degrees of the torsion angle in question, then that torsion angle is considered an outlier. Any bond that is central to one or more torsion angles identified as an outlier by Mogul will be highlighted in the graph. For rings, the root-mean-square deviation (RMSD) between the ring in question and similar rings identified by Mogul is calculated over all ring torsion angles. If the average RMSD is greater than 60 degrees and the minimal RMSD between the ring in question and any Mogul-identified rings is also greater than 60 degrees, then that ring is considered an outlier.

The outliers are highlighted in purple. The color gray indicates Mogul did not find sufficient equivalents in the CSD to analyse the geometry.





5.7 Other polymers [i](#)

There are no such residues in this entry.

5.8 Polymer linkage issues [i](#)

There are no chain breaks in this entry.

6 Fit of model and data [i](#)

6.1 Protein, DNA and RNA chains [i](#)

In the following table, the column labelled ‘#RSRZ > 2’ contains the number (and percentage) of RSRZ outliers, followed by percent RSRZ outliers for the chain as percentile scores relative to all X-ray entries and entries of similar resolution. The OWAB column contains the minimum, median, 95th percentile and maximum values of the occupancy-weighted average B-factor per residue. The column labelled ‘Q < 0.9’ lists the number of (and percentage) of residues with an average occupancy less than 0.9.

Mol	Chain	Analysed	<RSRZ>	#RSRZ>2	OWAB(Å ²)	Q<0.9
1	A	319/329 (96%)	-1.21	0 100 100	34, 55, 80, 105	0
1	C	319/329 (96%)	-1.20	0 100 100	31, 54, 78, 98	0
All	All	638/658 (96%)	-1.20	0 100 100	31, 54, 79, 105	0

There are no RSRZ outliers to report.

6.2 Non-standard residues in protein, DNA, RNA chains [i](#)

There are no non-standard protein/DNA/RNA residues in this entry.

6.3 Carbohydrates [i](#)

There are no oligosaccharides in this entry.

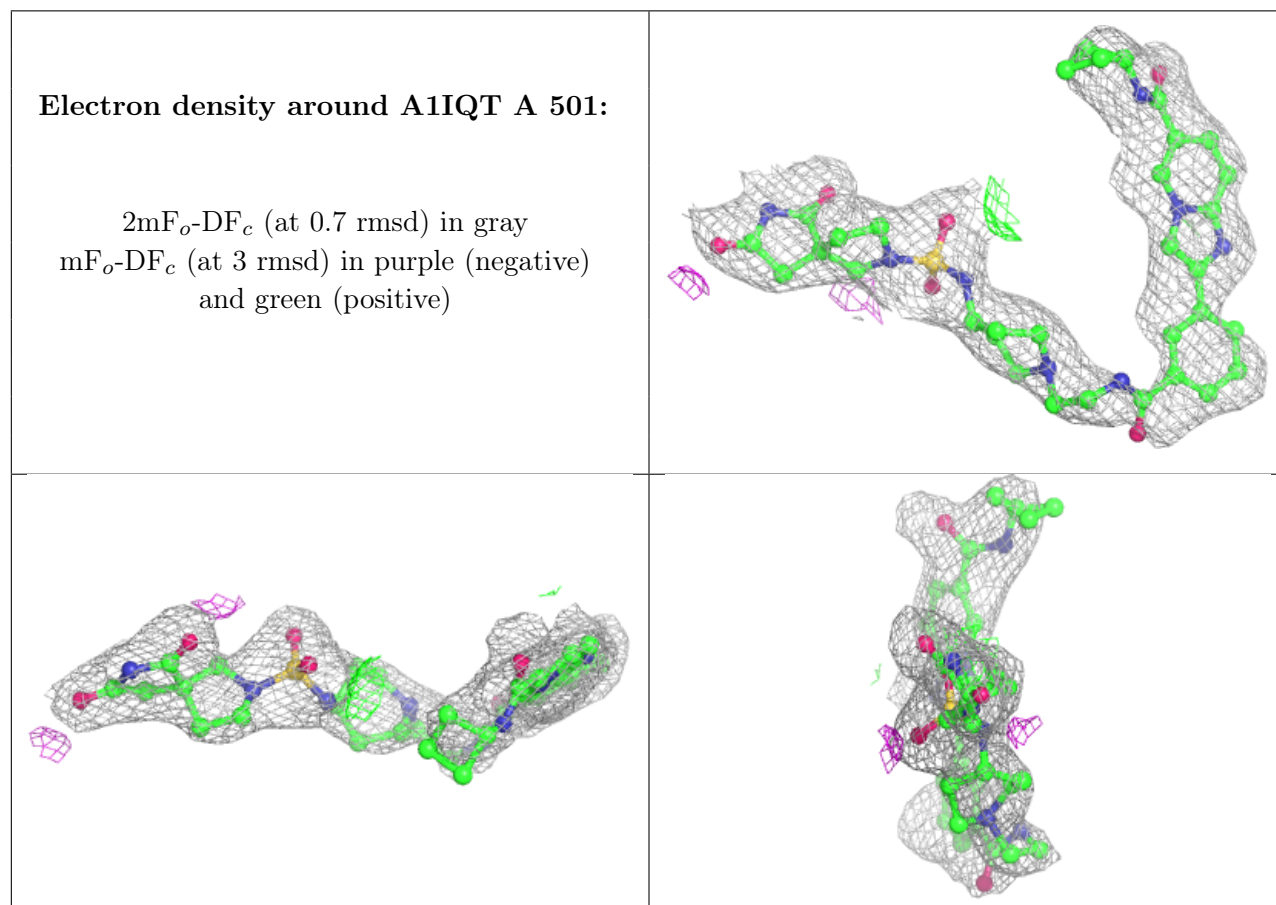
6.4 Ligands [i](#)

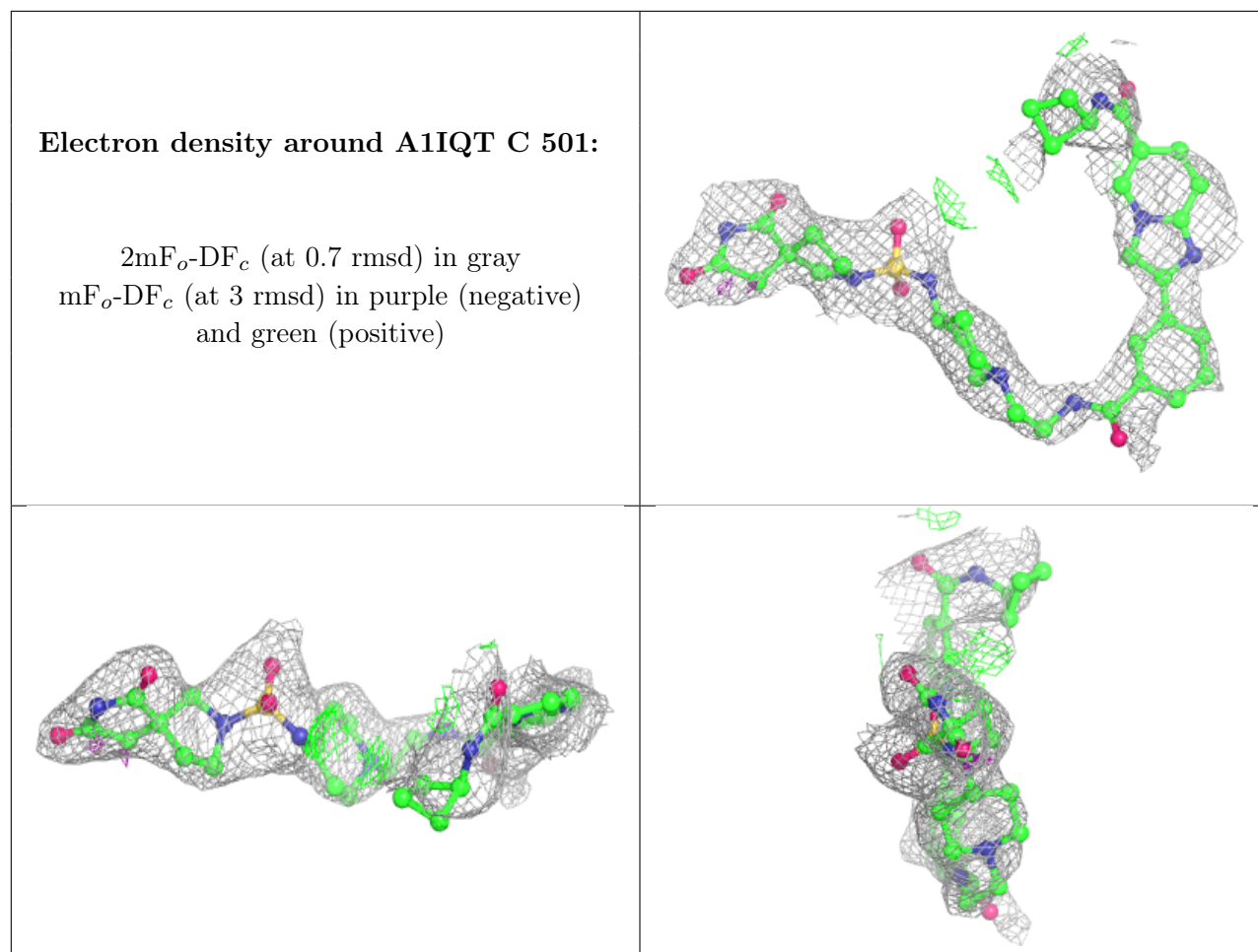
In the following table, the Atoms column lists the number of modelled atoms in the group and the number defined in the chemical component dictionary. The B-factors column lists the minimum, median, 95th percentile and maximum values of B factors of atoms in the group. The column labelled ‘Q < 0.9’ lists the number of atoms with occupancy less than 0.9.

Mol	Type	Chain	Res	Atoms	RSCC	RSR	B-factors(Å ²)	Q<0.9
2	A1IQT	A	501	48/48	0.99	0.06	34,67,81,85	0
2	A1IQT	C	501	48/48	0.99	0.06	34,67,81,85	0
3	ZN	A	502	1/1	1.00	0.01	61,61,61,61	0
3	ZN	C	502	1/1	1.00	0.01	72,72,72,72	0

The following is a graphical depiction of the model fit to experimental electron density of all instances of the Ligand of Interest. In addition, ligands with molecular weight > 250 and outliers

as shown on the geometry validation Tables will also be included. Each fit is shown from different orientation to approximate a three-dimensional view.





6.5 Other polymers [i](#)

There are no such residues in this entry.