



wwPDB X-ray Structure Validation Summary Report ⓘ

Oct 20, 2025 – 10:11 am BST

PDB ID : 9H30 / pdb_00009h30
Title : VHL:ElonginC:ElonginB-PROTAC4 complex
Authors : Maiocchi, A.; Abel, A.-C.; Steinmetz, M.O.; Passarella, D.; Protà, A.E.
Deposited on : 2024-10-15
Resolution : 2.50 Å(reported)

This is a wwPDB X-ray Structure Validation Summary Report for a publicly released PDB entry.

We welcome your comments at validation@mail.wwpdb.org

A user guide is available at

<https://www.wwpdb.org/validation/2017/XrayValidationReportHelp>

with specific help available everywhere you see the ⓘ symbol.

The types of validation reports are described at

<http://www.wwpdb.org/validation/2017/FAQs#types>.

The following versions of software and data (see [references ⓘ](#)) were used in the production of this report:

MolProbity : 4-5-2 with Phenix2.0
Mogul : 1.8.4, CSD as541be (2020)
Xtriage (Phenix) : 2.0
EDS : 3.0
buster-report : 1.1.7 (2018)
Percentile statistics : 20231227.v01 (using entries in the PDB archive December 27th 2023)
CCP4 : 9.0.010 (Gargrove)
Density-Fitness : 1.0.12
Ideal geometry (proteins) : Engh & Huber (2001)
Ideal geometry (DNA, RNA) : Parkinson et al. (1996)
Validation Pipeline (wwPDB-VP) : 2.46

i

X-RAY DIFFRACTION

A.

the following graphic. The table shows the number of entries on which the scores are based.



Percentile relative to all X-ray structures

Percentile relative to X-ray structures of similar resolution

Metric

Whole archive
(#Entries)

Similar resolution
(#Entries, resolution range(Å))

 R_{free}

Clashscore

Ramachandran outliers

Sidechain outliers

RSRZ outliers

164625

180529

177936

177891

164620

5504 (2.50-2.50)

6282 (2.50-2.50)

6191 (2.50-2.50)

6193 (2.50-2.50)

5504 (2.50-2.50)

The table below summarises the geometric issues observed across the polymeric chains and their fit to the electron density. The red, orange, yellow and green segments of the lower bar indicate the fraction of residues that contain outliers for ≥ 3 , 2, 1 and 0 types of geometric quality criteria respectively. A grey segment represents the fraction of residues that are not modelled. The numeric value for each fraction is indicated below the corresponding segment, with a dot representing fractions $\leq 5\%$. The upper red bar (where present) indicates the fraction of residues that have poor fit to the electron density. The numeric value is given above the bar.

Quality of chain

2 Entry composition

There are 5 unique types of molecules in this entry. The entry contains 5615 atoms, of which 2786 are hydrogens and 0 are deuteriums.

In the tables below, the ZeroOcc column contains the number of atoms modelled with zero occupancy, the AltConf column contains the number of residues with at least one atom in alternate conformation and the Trace column contains the number of residues modelled with at most 2 atoms.

- Molecule 1 is a protein called von Hippel-Lindau disease tumor suppressor.

Mol	Chain	Residues	Atoms						ZeroOcc	AltConf	Trace
1	B	144	Total	C	H	N	O	S	0	6	0
			2414	768	1208	218	218	2			

There are 37 discrepancies between the modelled and reference sequences:

Chain	Residue	Modelled	Actual	Comment	Reference
B	17	MET	-	initiating methionine	UNP P40337
B	18	ASN	-	expression tag	UNP P40337
B	19	THR	-	expression tag	UNP P40337
B	20	ILE	-	expression tag	UNP P40337
B	21	HIS	-	expression tag	UNP P40337
B	22	HIS	-	expression tag	UNP P40337
B	23	HIS	-	expression tag	UNP P40337
B	24	HIS	-	expression tag	UNP P40337
B	25	HIS	-	expression tag	UNP P40337
B	26	HIS	-	expression tag	UNP P40337
B	27	ASN	-	expression tag	UNP P40337
B	28	THR	-	expression tag	UNP P40337
B	29	SER	-	expression tag	UNP P40337
B	30	GLY	-	expression tag	UNP P40337
B	31	SER	-	expression tag	UNP P40337
B	32	GLY	-	expression tag	UNP P40337
B	33	GLY	-	expression tag	UNP P40337
B	34	GLY	-	expression tag	UNP P40337
B	35	GLY	-	expression tag	UNP P40337
B	36	GLY	-	expression tag	UNP P40337
B	37	ARG	-	expression tag	UNP P40337
B	38	LEU	-	expression tag	UNP P40337
B	39	VAL	-	expression tag	UNP P40337
B	40	PRO	-	expression tag	UNP P40337
B	41	ARG	-	expression tag	UNP P40337
B	42	GLY	-	expression tag	UNP P40337
B	43	SER	-	expression tag	UNP P40337

Continued on next page...

Continued from previous page...

Chain	Residue	Modelled	Actual	Comment	Reference
B	44	MET	-	expression tag	UNP P40337
B	45	SER	-	expression tag	UNP P40337
B	46	GLU	-	expression tag	UNP P40337
B	47	ASN	-	expression tag	UNP P40337
B	48	LEU	-	expression tag	UNP P40337
B	49	TYR	-	expression tag	UNP P40337
B	50	PHE	-	expression tag	UNP P40337
B	51	GLN	-	expression tag	UNP P40337
B	52	GLY	-	expression tag	UNP P40337
B	53	SER	-	expression tag	UNP P40337

- Molecule 2 is a protein called Elongin-C.

Mol	Chain	Residues	Atoms						ZeroOcc	AltConf	Trace
2	C	88	Total	C	H	N	O	S	0	0	0
			1401	452	698	112	133	6			

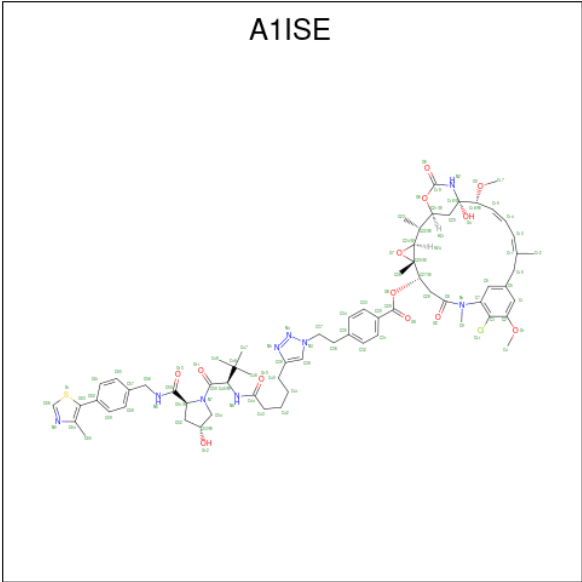
There is a discrepancy between the modelled and reference sequences:

Chain	Residue	Modelled	Actual	Comment	Reference
C	16	MET	-	initiating methionine	UNP Q15369

- Molecule 3 is a protein called Elongin-B.

Mol	Chain	Residues	Atoms						ZeroOcc	AltConf	Trace
3	D	102	Total	C	H	N	O	S	0	0	0
			1603	509	798	135	157	4			

- Molecule 4 is N-[5-(1-{2-[4-({[(1S,2R,3S,5S,6S,16E,18E,20R,21S)-11-chloro-21-hydroxy-12,20-dimethoxy-2,5,9,16-tetramethyl-8,23-dioxo-4,24-dioxa-9,22-diazatetracyclo[19.3.1.1^{10,14}.0^{3,5}]hexacos-10(26),11,13,16,18-pentaen-6-yl]oxy}carbonyl)phenyl]ethyl)-1H-1,2,3-triazol-4-yl)pentanoyl]-3-methyl-D-valyl-(4R)-4-hydroxy-N-{{4-(4-methyl-1,3-thiazol-5-yl)phenyl}methyl}-L-prolinamide (CCD ID: A1ISE) (formula: C₆₆H₈₂ClN₉O₁₃S).



Mol	Chain	Residues	Atoms							ZeroOcc	AltConf
			Total	C	Cl	H	N	O	S		
4	B	1	172	66	1	82	9	13	1	0	0

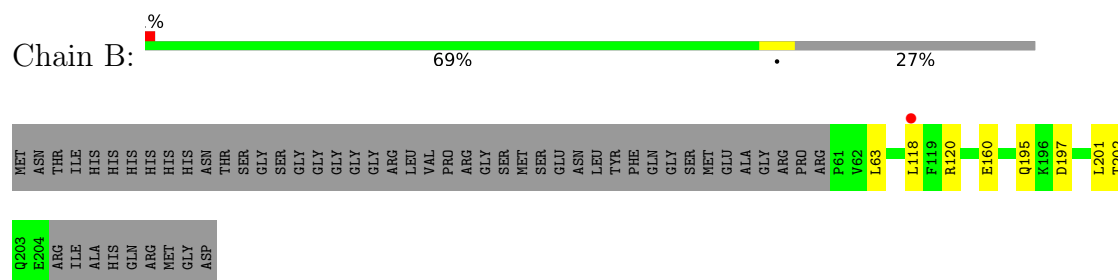
- Molecule 5 is water.

Mol	Chain	Residues	Atoms	ZeroOcc	AltConf
5	B	22	Total O 22 22	0	0
5	C	1	Total O 1 1	0	0
5	D	2	Total O 2 2	0	0

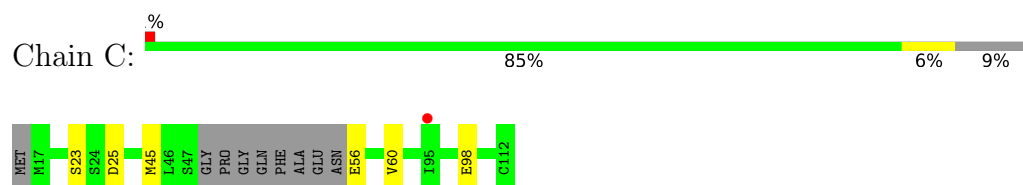
3 Residue-property plots [i](#)

These plots are drawn for all protein, RNA, DNA and oligosaccharide chains in the entry. The first graphic for a chain summarises the proportions of the various outlier classes displayed in the second graphic. The second graphic shows the sequence view annotated by issues in geometry and electron density. Residues are color-coded according to the number of geometric quality criteria for which they contain at least one outlier: green = 0, yellow = 1, orange = 2 and red = 3 or more. A red dot above a residue indicates a poor fit to the electron density ($RSRZ > 2$). Stretches of 2 or more consecutive residues without any outlier are shown as a green connector. Residues present in the sample, but not in the model, are shown in grey.

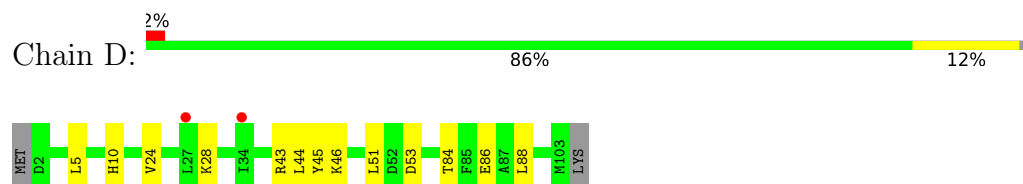
- Molecule 1: von Hippel-Lindau disease tumor suppressor



- Molecule 2: Elongin-C



- Molecule 3: Elongin-B



4 Data and refinement statistics

Property	Value	Source
Space group	C 1 2 1	Depositor
Cell constants a, b, c, α , β , γ	65.46Å 67.04Å 101.84Å 90.00° 94.06° 90.00°	Depositor
Resolution (Å)	46.78 – 2.50 46.78 – 2.50	Depositor EDS
% Data completeness (in resolution range)	93.8 (46.78-2.50) 93.8 (46.78-2.50)	Depositor EDS
R_{merge}	0.08	Depositor
R_{sym}	(Not available)	Depositor
$\langle I/\sigma(I) \rangle$ ¹	1.51 (at 2.32Å)	Xtriage
Refinement program	PHENIX 1.21.1_5286	Depositor
R, R_{free}	0.202 , 0.250 0.202 , 0.249	Depositor DCC
R_{free} test set	777 reflections (4.95%)	wwPDB-VP
Wilson B-factor (Å ²)	62.8	Xtriage
Anisotropy	0.048	Xtriage
Bulk solvent k_{sol} (e/Å ³), B_{sol} (Å ²)	0.35 , 63.0	EDS
L-test for twinning ²	$\langle L \rangle = 0.49$, $\langle L^2 \rangle = 0.32$	Xtriage
Estimated twinning fraction	No twinning to report.	Xtriage
F_o, F_c correlation	0.95	EDS
Total number of atoms	5615	wwPDB-VP
Average B, all atoms (Å ²)	99.0	wwPDB-VP

Xtriage's analysis on translational NCS is as follows: *The largest off-origin peak in the Patterson function is 7.33% of the height of the origin peak. No significant pseudotranslation is detected.*

¹Intensities estimated from amplitudes.

²Theoretical values of $\langle |L| \rangle$, $\langle L^2 \rangle$ for acentric reflections are 0.5, 0.333 respectively for untwinned datasets, and 0.375, 0.2 for perfectly twinned datasets.

5 Model quality

5.1 Standard geometry

Bond lengths and bond angles in the following residue types are not validated in this section: A1ISE

The Z score for a bond length (or angle) is the number of standard deviations the observed value is removed from the expected value. A bond length (or angle) with $|Z| > 5$ is considered an outlier worth inspection. RMSZ is the root-mean-square of all Z scores of the bond lengths (or angles).

Mol	Chain	Bond lengths		Bond angles	
		RMSZ	# Z >5	RMSZ	# Z >5
1	B	0.11	0/1253	0.26	0/1712
2	C	0.15	0/717	0.23	0/967
3	D	0.10	0/821	0.24	0/1111
All	All	0.12	0/2791	0.25	0/3790

There are no bond length outliers.

There are no bond angle outliers.

There are no chirality outliers.

There are no planarity outliers.

5.2 Too-close contacts

In the following table, the Non-H and H(model) columns list the number of non-hydrogen atoms and hydrogen atoms in the chain respectively. The H(added) column lists the number of hydrogen atoms added and optimized by MolProbity. The Clashes column lists the number of clashes within the asymmetric unit, whereas Symm-Clashes lists symmetry-related clashes.

Mol	Chain	Non-H	H(model)	H(added)	Clashes	Symm-Clashes
1	B	1206	1208	1200	6	0
2	C	703	698	701	4	0
3	D	805	798	799	6	0
4	B	90	82	0	0	0
5	B	22	0	0	1	0
5	C	1	0	0	0	0
5	D	2	0	0	0	0
All	All	2829	2786	2700	16	0

The all-atom clashscore is defined as the number of clashes found per 1000 atoms (including hydrogen atoms). The all-atom clashscore for this structure is 3.

The worst 5 of 16 close contacts within the same asymmetric unit are listed below, sorted by their clash magnitude.

Atom-1	Atom-2	Interatomic distance (Å)	Clash overlap (Å)
1:B:160:GLU:OE1	5:B:401:HOH:O	1.97	0.82
2:C:56:GLU:OE1	2:C:56:GLU:N	2.30	0.63
2:C:23:SER:OG	2:C:25:ASP:OD1	2.17	0.62
3:D:43:ARG:NH2	3:D:86:GLU:O	2.38	0.57
3:D:24:VAL:HG13	3:D:44:LEU:HD12	1.87	0.57

There are no symmetry-related clashes.

5.3 Torsion angles [i](#)

5.3.1 Protein backbone [i](#)

In the following table, the Percentiles column shows the percent Ramachandran outliers of the chain as a percentile score with respect to all X-ray entries followed by that with respect to entries of similar resolution.

The Analysed column shows the number of residues for which the backbone conformation was analysed, and the total number of residues.

Mol	Chain	Analysed	Favoured	Allowed	Outliers	Percentiles	
1	B	148/197 (75%)	144 (97%)	4 (3%)	0	100	100
2	C	84/97 (87%)	84 (100%)	0	0	100	100
3	D	100/104 (96%)	98 (98%)	2 (2%)	0	100	100
All	All	332/398 (83%)	326 (98%)	6 (2%)	0	100	100

There are no Ramachandran outliers to report.

5.3.2 Protein sidechains [i](#)

In the following table, the Percentiles column shows the percent sidechain outliers of the chain as a percentile score with respect to all X-ray entries followed by that with respect to entries of similar resolution.

The Analysed column shows the number of residues for which the sidechain conformation was analysed, and the total number of residues.

Mol	Chain	Analysed	Rotameric	Outliers	Percentiles	
1	B	141/176 (80%)	140 (99%)	1 (1%)	81	93

Continued on next page...

Continued from previous page...

Mol	Chain	Analysed	Rotameric	Outliers	Percentiles	
2	C	80/86 (93%)	80 (100%)	0	100	100
3	D	90/92 (98%)	88 (98%)	2 (2%)	47	73
All	All	311/354 (88%)	308 (99%)	3 (1%)	73	88

All (3) residues with a non-rotameric sidechain are listed below:

Mol	Chain	Res	Type
1	B	118	LEU
3	D	5	LEU
3	D	84	THR

Sometimes sidechains can be flipped to improve hydrogen bonding and reduce clashes. All (2) such sidechains are listed below:

Mol	Chain	Res	Type
2	C	27	HIS
2	C	35	HIS

5.3.3 RNA [i](#)

There are no RNA molecules in this entry.

5.4 Non-standard residues in protein, DNA, RNA chains [i](#)

There are no non-standard protein/DNA/RNA residues in this entry.

5.5 Carbohydrates [i](#)

There are no oligosaccharides in this entry.

5.6 Ligand geometry [i](#)

1 ligand is modelled in this entry.

In the following table, the Counts columns list the number of bonds (or angles) for which Mogul statistics could be retrieved, the number of bonds (or angles) that are observed in the model and the number of bonds (or angles) that are defined in the Chemical Component Dictionary. The Link column lists molecule types, if any, to which the group is linked. The Z score for a bond length (or angle) is the number of standard deviations the observed value is removed from the

expected value. A bond length (or angle) with $|Z| > 2$ is considered an outlier worth inspection. RMSZ is the root-mean-square of all Z scores of the bond lengths (or angles).

Mol	Type	Chain	Res	Link	Bond lengths			Bond angles		
					Counts	RMSZ	$\# Z > 2$	Counts	RMSZ	$\# Z > 2$
4	A1ISE	B	301	-	91,98,98	1.38	7 (7%)	110,144,144	2.17	28 (25%)

In the following table, the Chirals column lists the number of chiral outliers, the number of chiral centers analysed, the number of these observed in the model and the number defined in the Chemical Component Dictionary. Similar counts are reported in the Torsion and Rings columns. '-' means no outliers of that kind were identified.

Mol	Type	Chain	Res	Link	Chirals	Torsions	Rings
4	A1ISE	B	301	-	-	23/92/131/131	0/7/9/9

The worst 5 of 7 bond length outliers are listed below:

Mol	Chain	Res	Type	Atoms	Z	Observed(Å)	Ideal(Å)
4	B	301	A1ISE	C14-C15	7.51	1.63	1.33
4	B	301	A1ISE	O7-C25	-4.66	1.40	1.45
4	B	301	A1ISE	C38-N3	3.68	1.39	1.35
4	B	301	A1ISE	O7-C24	-3.47	1.40	1.45
4	B	301	A1ISE	O6-C21	-3.26	1.42	1.46

The worst 5 of 28 bond angle outliers are listed below:

Mol	Chain	Res	Type	Atoms	Z	Observed(°)	Ideal(°)
4	B	301	A1ISE	O6-C21-C22	9.03	124.52	105.76
4	B	301	A1ISE	C25-O7-C24	6.70	64.82	60.79
4	B	301	A1ISE	C45-C50-N7	6.42	126.24	118.52
4	B	301	A1ISE	C52-C51-N7	5.60	110.50	103.10
4	B	301	A1ISE	C50-C45-N6	5.10	112.89	107.34

There are no chirality outliers.

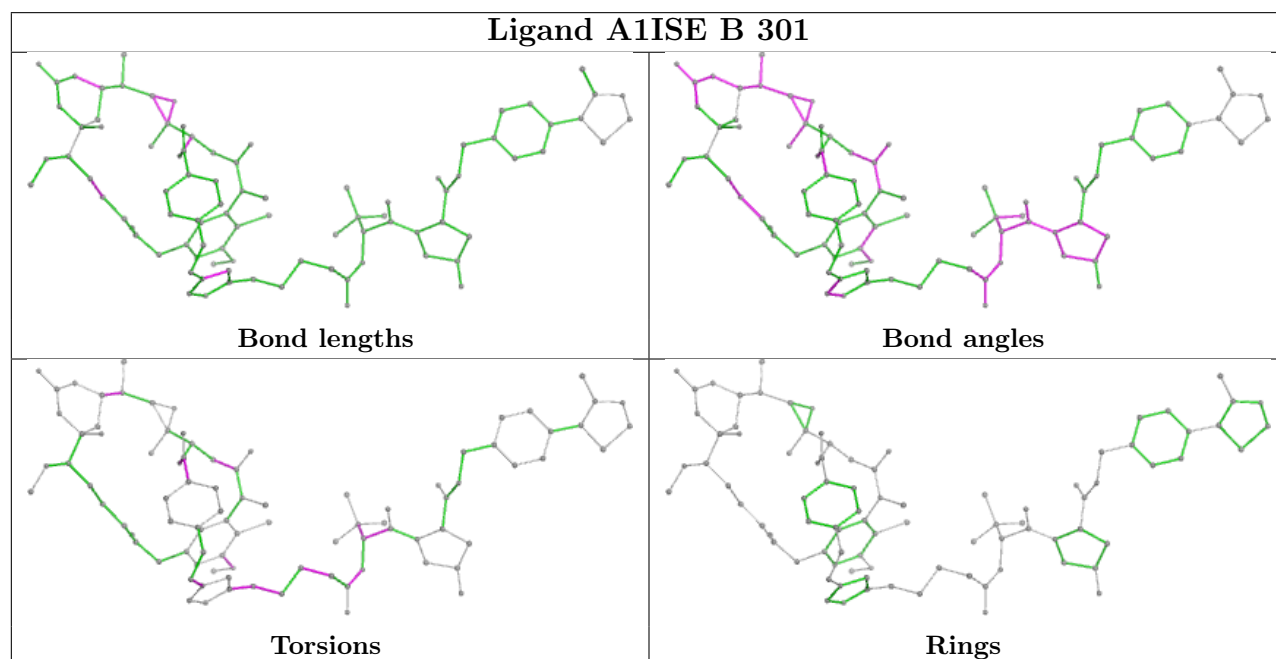
5 of 23 torsion outliers are listed below:

Mol	Chain	Res	Type	Atoms
4	B	301	A1ISE	C36-C37-N3-C38
4	B	301	A1ISE	C36-C37-N3-N4
4	B	301	A1ISE	C3-C2-O1-C4
4	B	301	A1ISE	N5-C39-C40-C41
4	B	301	A1ISE	C39-C40-C41-C42

There are no ring outliers.

No monomer is involved in short contacts.

The following is a two-dimensional graphical depiction of Mogul quality analysis of bond lengths, bond angles, torsion angles, and ring geometry for all instances of the Ligand of Interest. In addition, ligands with molecular weight > 250 and outliers as shown on the validation Tables will also be included. For torsion angles, if less than 5% of the Mogul distribution of torsion angles is within 10 degrees of the torsion angle in question, then that torsion angle is considered an outlier. Any bond that is central to one or more torsion angles identified as an outlier by Mogul will be highlighted in the graph. For rings, the root-mean-square deviation (RMSD) between the ring in question and similar rings identified by Mogul is calculated over all ring torsion angles. If the average RMSD is greater than 60 degrees and the minimal RMSD between the ring in question and any Mogul-identified rings is also greater than 60 degrees, then that ring is considered an outlier. The outliers are highlighted in purple. The color gray indicates Mogul did not find sufficient equivalents in the CSD to analyse the geometry.



5.7 Other polymers ⓘ

There are no such residues in this entry.

5.8 Polymer linkage issues ⓘ

There are no chain breaks in this entry.

6 Fit of model and data [i](#)

6.1 Protein, DNA and RNA chains [i](#)

In the following table, the column labelled ‘#RSRZ> 2’ contains the number (and percentage) of RSRZ outliers, followed by percent RSRZ outliers for the chain as percentile scores relative to all X-ray entries and entries of similar resolution. The OWAB column contains the minimum, median, 95th percentile and maximum values of the occupancy-weighted average B-factor per residue. The column labelled ‘Q< 0.9’ lists the number of (and percentage) of residues with an average occupancy less than 0.9.

Mol	Chain	Analysed	<RSRZ>	#RSRZ>2	OWAB(Å ²)	Q<0.9
1	B	144/197 (73%)	-0.15	1 (0%) 84 81	40, 74, 125, 140	4 (2%)
2	C	88/97 (90%)	-0.02	1 (1%) 77 74	57, 85, 129, 162	0
3	D	102/104 (98%)	0.49	2 (1%) 64 62	86, 134, 179, 201	0
All	All	334/398 (83%)	0.08	4 (1%) 76 73	40, 94, 160, 201	4 (1%)

All (4) RSRZ outliers are listed below:

Mol	Chain	Res	Type	RSRZ
1	B	118	LEU	2.7
3	D	34	ILE	2.4
3	D	27	LEU	2.3
2	C	95	ILE	2.1

6.2 Non-standard residues in protein, DNA, RNA chains [i](#)

There are no non-standard protein/DNA/RNA residues in this entry.

6.3 Carbohydrates [i](#)

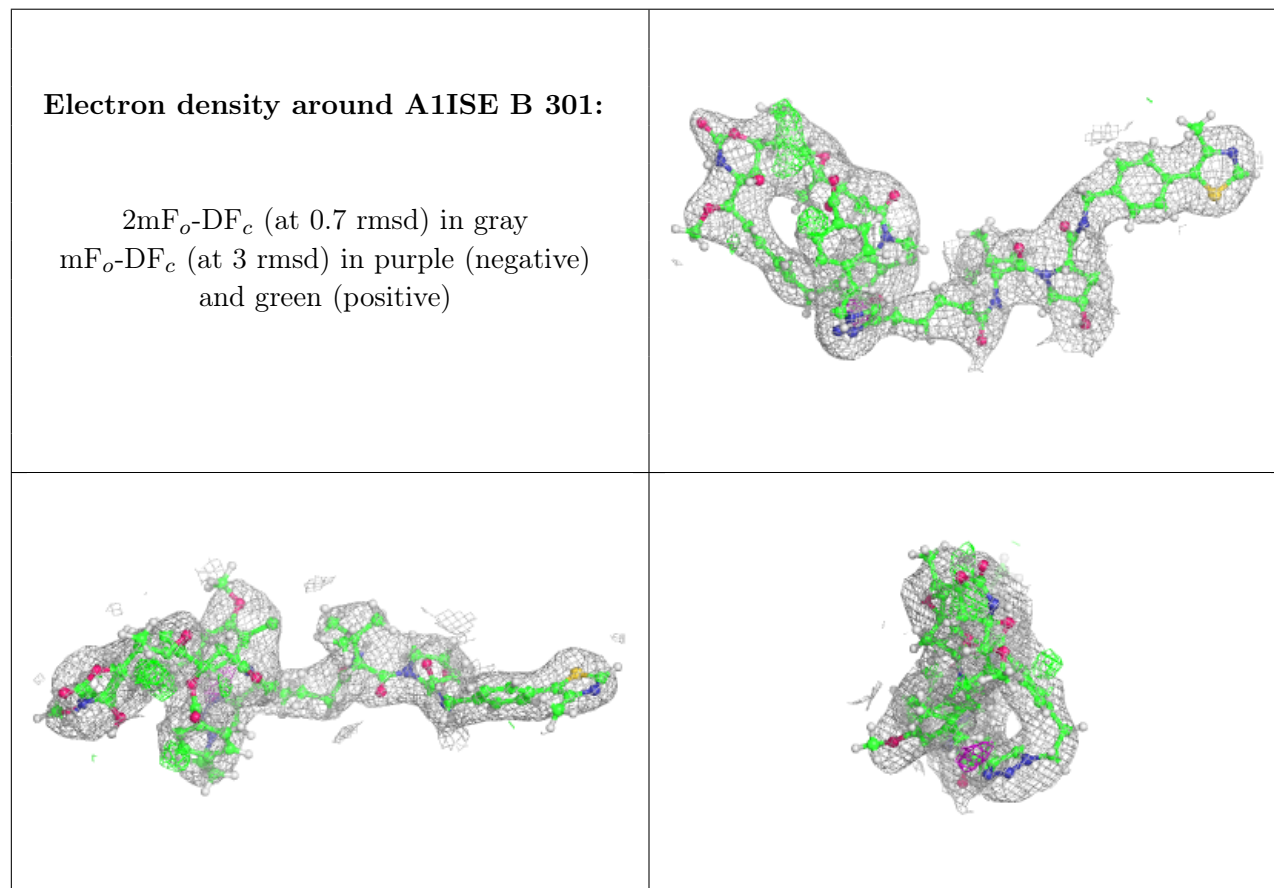
There are no oligosaccharides in this entry.

6.4 Ligands [i](#)

In the following table, the Atoms column lists the number of modelled atoms in the group and the number defined in the chemical component dictionary. The B-factors column lists the minimum, median, 95th percentile and maximum values of B factors of atoms in the group. The column labelled ‘Q< 0.9’ lists the number of atoms with occupancy less than 0.9.

Mol	Type	Chain	Res	Atoms	RSCC	RSR	B-factors(\AA^2)	Q<0.9
4	A1ISE	B	301	90/90	0.93	0.10	34,79,129,160	0

The following is a graphical depiction of the model fit to experimental electron density of all instances of the Ligand of Interest. In addition, ligands with molecular weight > 250 and outliers as shown on the geometry validation Tables will also be included. Each fit is shown from different orientation to approximate a three-dimensional view.



6.5 Other polymers [i](#)

There are no such residues in this entry.