



wwPDB X-ray Structure Validation Summary Report ⓘ

Oct 20, 2025 – 01:34 pm BST

PDB ID : 9H32 / pdb_00009h32
Title : T2R-TTL-PROTAC3 complex
Authors : Maiocchi, A.; Abel, A.-C.; Boiarska, Z.; Steinmetz, M.O.; Passarella, D.;
Prota, A.E.
Deposited on : 2024-10-15
Resolution : 2.31 Å(reported)

This is a wwPDB X-ray Structure Validation Summary Report for a publicly released PDB entry.

We welcome your comments at validation@mail.wwpdb.org

A user guide is available at

<https://www.wwpdb.org/validation/2017/XrayValidationReportHelp>

with specific help available everywhere you see the ⓘ symbol.

The types of validation reports are described at

<http://www.wwpdb.org/validation/2017/FAQs#types>.

The following versions of software and data (see [references ⓘ](#)) were used in the production of this report:

MolProbity : 4-5-2 with Phenix2.0
Mogul : 1.8.4, CSD as541be (2020)
Xtriage (Phenix) : 2.0
EDS : 3.0
buster-report : 1.1.7 (2018)
Percentile statistics : 20231227.v01 (using entries in the PDB archive December 27th 2023)
CCP4 : 9.0.010 (Gargrove)
Density-Fitness : 1.0.12
Ideal geometry (proteins) : Engh & Huber (2001)
Ideal geometry (DNA, RNA) : Parkinson et al. (1996)
Validation Pipeline (wwPDB-VP) : 2.46

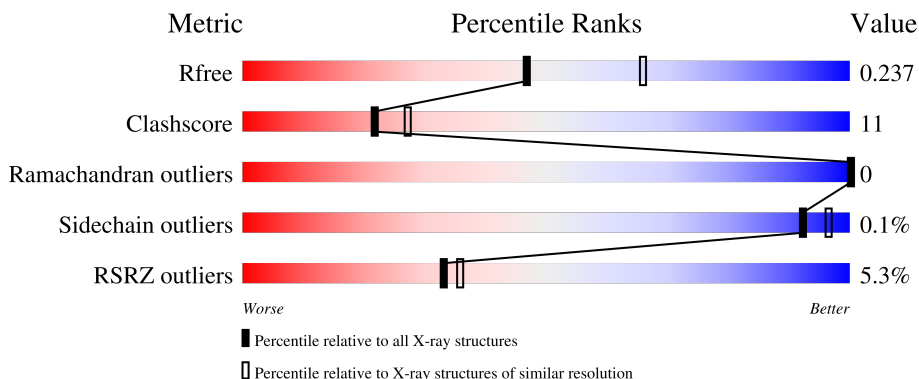
1 Overall quality at a glance

The following experimental techniques were used to determine the structure:

X-RAY DIFFRACTION

The reported resolution of this entry is 2.31 Å.

Percentile scores (ranging between 0-100) for global validation metrics of the entry are shown in the following graphic. The table shows the number of entries on which the scores are based.



Metric	Whole archive (#Entries)	Similar resolution (#Entries, resolution range(Å))
R_{free}	164625	7250 (2.34-2.30)
Clashscore	180529	8063 (2.34-2.30)
Ramachandran outliers	177936	7993 (2.34-2.30)
Sidechain outliers	177891	7993 (2.34-2.30)
RSRZ outliers	164620	7250 (2.34-2.30)

The table below summarises the geometric issues observed across the polymeric chains and their fit to the electron density. The red, orange, yellow and green segments of the lower bar indicate the fraction of residues that contain outliers for ≥ 3 , 2, 1 and 0 types of geometric quality criteria respectively. A grey segment represents the fraction of residues that are not modelled. The numeric value for each fraction is indicated below the corresponding segment, with a dot representing fractions $\leq 5\%$. The upper red bar (where present) indicates the fraction of residues that have poor fit to the electron density. The numeric value is given above the bar.

Mol	Chain	Length	Quality of chain
1	A	451	<div> <div>4%</div> <div> <div></div> <div>75%</div> <div>22%</div> <div>.</div> </div> </div>
1	C	451	<div> <div>4%</div> <div> <div></div> <div>76%</div> <div>21%</div> <div>.</div> </div> </div>
2	B	445	<div> <div>4%</div> <div> <div></div> <div>70%</div> <div>25%</div> <div>5%</div> </div> </div>
2	D	445	<div> <div>5%</div> <div> <div></div> <div>68%</div> <div>27%</div> <div>.</div> </div> </div>
3	E	143	<div> <div>6%</div> <div> <div></div> <div>63%</div> <div>22%</div> <div>15%</div> </div> </div>

Continued on next page...

Continued from previous page...

Mol	Chain	Length	Quality of chain
4	F	384	<div><div></div><div></div><div></div><div></div></div> <div><div>9%</div><div>67%</div><div>22%</div><div>11%</div></div>

2 Entry composition

There are 12 unique types of molecules in this entry. The entry contains 17946 atoms, of which 63 are hydrogens and 0 are deuteriums.

In the tables below, the ZeroOcc column contains the number of atoms modelled with zero occupancy, the AltConf column contains the number of residues with at least one atom in alternate conformation and the Trace column contains the number of residues modelled with at most 2 atoms.

- Molecule 1 is a protein called Tubulin alpha-1B chain.

Mol	Chain	Residues	Atoms					ZeroOcc	AltConf	Trace
1	A	438	Total	C	N	O	S	0	0	0
			3424	2167	582	653	22			
1	C	440	Total	C	N	O	S	0	1	0
			3443	2178	585	657	23			

- Molecule 2 is a protein called Tubulin beta-2B chain.

Mol	Chain	Residues	Atoms					ZeroOcc	AltConf	Trace
2	B	423	Total	C	N	O	S	0	1	0
			3345	2102	572	644	27			
2	D	425	Total	C	N	O	S	0	1	0
			3346	2100	570	649	27			

- Molecule 3 is a protein called Stathmin-4.

Mol	Chain	Residues	Atoms					ZeroOcc	AltConf	Trace
3	E	121	Total	C	N	O	S	0	0	0
			1000	617	181	197	5			

There are 2 discrepancies between the modelled and reference sequences:

Chain	Residue	Modelled	Actual	Comment	Reference
E	3	MET	-	initiating methionine	UNP P63043
E	4	ALA	-	expression tag	UNP P63043

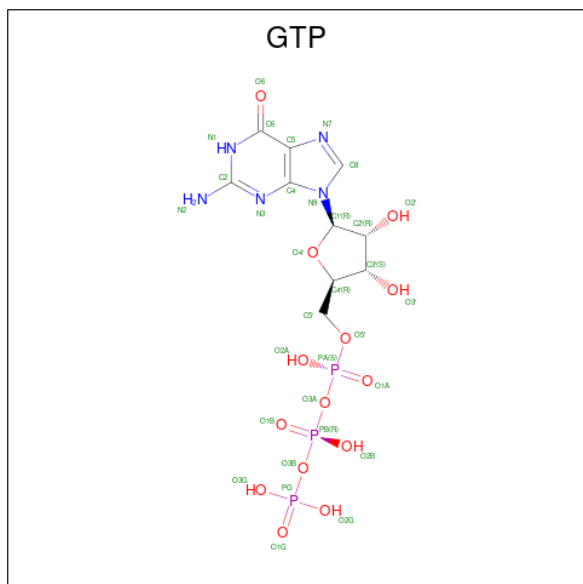
- Molecule 4 is a protein called Tubulin-tyrosine ligase.

Mol	Chain	Residues	Atoms					ZeroOcc	AltConf	Trace
4	F	342	Total	C	N	O	S	0	0	0
			2793	1792	477	510	14			

There are 6 discrepancies between the modelled and reference sequences:

Chain	Residue	Modelled	Actual	Comment	Reference
F	379	HIS	-	expression tag	UNP A0A8V0Z8P0
F	380	HIS	-	expression tag	UNP A0A8V0Z8P0
F	381	HIS	-	expression tag	UNP A0A8V0Z8P0
F	382	HIS	-	expression tag	UNP A0A8V0Z8P0
F	383	HIS	-	expression tag	UNP A0A8V0Z8P0
F	384	HIS	-	expression tag	UNP A0A8V0Z8P0

- Molecule 5 is GUANOSINE-5'-TRIPHOSPHATE (CCD ID: GTP) (formula: $C_{10}H_{16}N_5O_{14}P_3$).



Mol	Chain	Residues	Atoms					ZeroOcc	AltConf
5	A	1	Total	C	N	O	P	0	0
			32	10	5	14	3		
5	C	1	Total	C	N	O	P	0	0
			32	10	5	14	3		

- Molecule 6 is MAGNESIUM ION (CCD ID: MG) (formula: Mg).

Mol	Chain	Residues	Atoms		ZeroOcc	AltConf
6	A	1	Total	Mg	0	0
			1	1		
6	B	1	Total	Mg	0	0
			1	1		
6	C	1	Total	Mg	0	0
			1	1		
6	D	1	Total	Mg	0	0
			1	1		

Continued on next page...

Continued from previous page...

Mol	Chain	Residues	Atoms		ZeroOcc	AltConf
6	F	1	Total	Mg	0	0
			1	1		

- Molecule 7 is CALCIUM ION (CCD ID: CA) (formula: Ca).

Mol	Chain	Residues	Atoms		ZeroOcc	AltConf
7	A	1	Total	Ca	0	0
			1	1		
7	B	1	Total	Ca	0	0
			1	1		
7	C	1	Total	Ca	0	0
			1	1		
7	E	1	Total	Ca	0	0
			1	1		

- Molecule 8 is GUANOSINE-5'-DIPHOSPHATE (CCD ID: GDP) (formula: C₁₀H₁₅N₅O₁₁P₂).



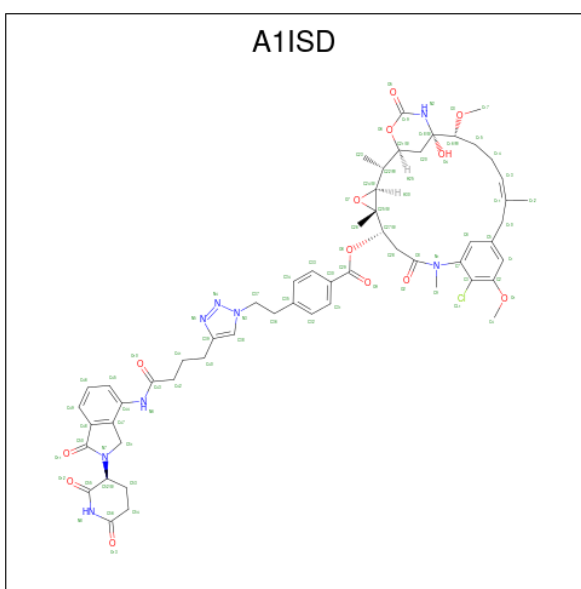
Mol	Chain	Residues	Atoms					ZeroOcc	AltConf
8	B	1	Total	C	N	O	P	0	0
			28	10	5	11	2		
8	D	1	Total	C	N	O	P	0	0
			28	10	5	11	2		

- Molecule 9 is 2-(N-MORPHOLINO)-ETHANESULFONIC ACID (CCD ID: MES) (formula: C₆H₁₃NO₄S).



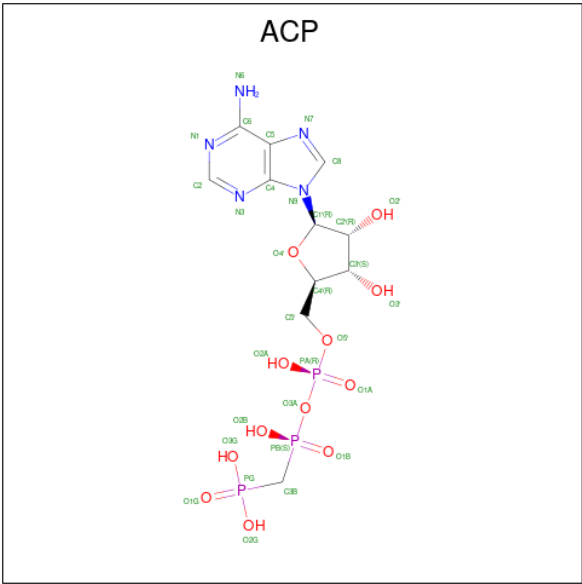
Mol	Chain	Residues	Atoms					ZeroOcc	AltConf
9	B	1	Total	C	N	O	S	0	0
			12	6	1	4	1		

- Molecule 10 is (1S,2R,3S,5S,6S,16E,20R,21S)-11-chloro-21-hydroxy-12,20-dimethoxy-2,5,9,16-tetramethyl-8,23-dioxo-4,24-dioxo-9,22-diazatetracyclo[19.3.1.1 10,14 .0 3,5]hexacosa-10(26),11,13,16-tetraen-6-yl 4-(2-{4-[4-({2-[(3S)-2,6-dioxopiperidin-3-yl]-1-oxo-2,3-dihydro-1H-isindol-4-yl}amino)-4-oxobutyl]-1H-1,2,3-triazol-1-yl}ethyl)benzoate (CCD ID: A1ISD) (formula: C₅₆H₆₅ClN₈O₁₃) (labeled as "Ligand of Interest" by depositor).



Mol	Chain	Residues	Atoms						ZeroOcc	AltConf
10	D	1	Total	C	Cl	H	N	O	0	0
			141	56	1	63	8	13		

- Molecule 11 is PHOSPHOMETHYLPHOSPHONIC ACID ADENYLATE ESTER (CCD ID: ACP) (formula: C₁₁H₁₈N₅O₁₂P₃).



Mol	Chain	Residues	Atoms					ZeroOcc	AltConf
11	F	1	Total	C	N	O	P	0	0
			31	11	5	12	3		

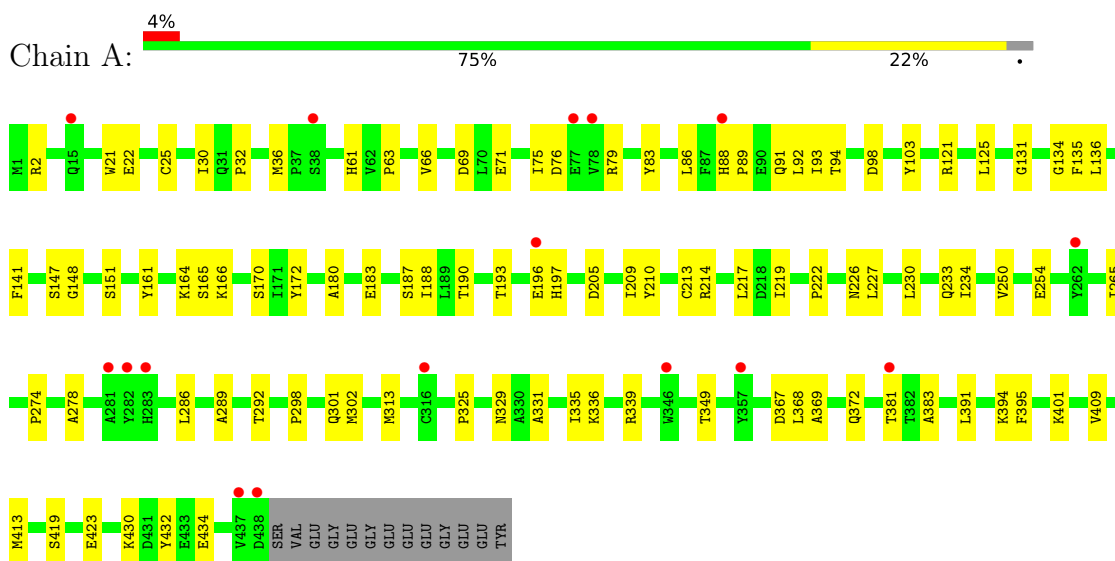
- Molecule 12 is water.

Mol	Chain	Residues	Atoms		ZeroOcc	AltConf
12	A	50	Total	O	0	0
			50	50		
12	B	68	Total	O	0	0
			68	68		
12	C	115	Total	O	0	0
			115	115		
12	D	26	Total	O	0	0
			26	26		
12	E	8	Total	O	0	0
			8	8		
12	F	15	Total	O	0	0
			15	15		

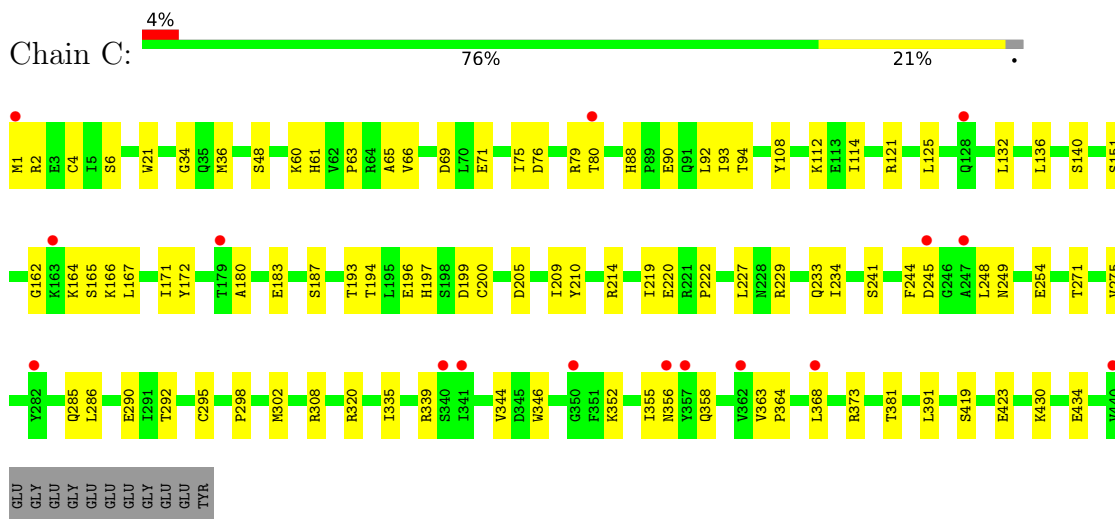
3 Residue-property plots [i](#)

These plots are drawn for all protein, RNA, DNA and oligosaccharide chains in the entry. The first graphic for a chain summarises the proportions of the various outlier classes displayed in the second graphic. The second graphic shows the sequence view annotated by issues in geometry and electron density. Residues are color-coded according to the number of geometric quality criteria for which they contain at least one outlier: green = 0, yellow = 1, orange = 2 and red = 3 or more. A red dot above a residue indicates a poor fit to the electron density ($RSRZ > 2$). Stretches of 2 or more consecutive residues without any outlier are shown as a green connector. Residues present in the sample, but not in the model, are shown in grey.

- Molecule 1: Tubulin alpha-1B chain

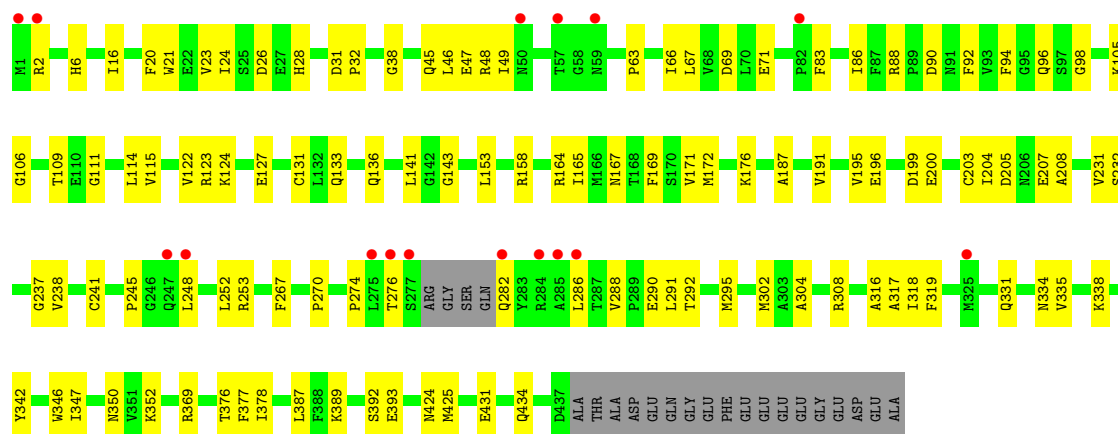


- Molecule 1: Tubulin alpha-1B chain

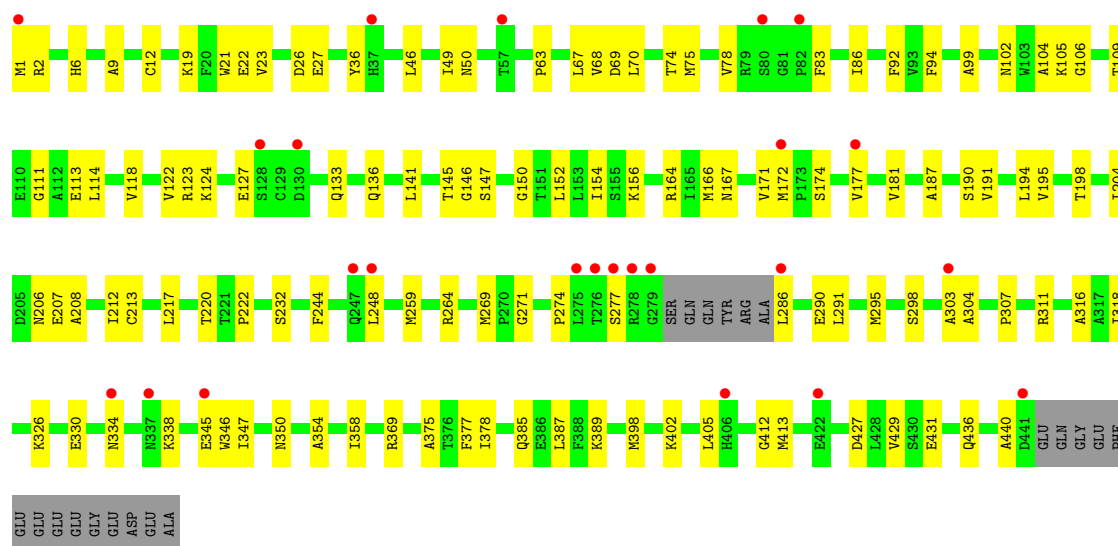


- Molecule 2: Tubulin beta-2B chain

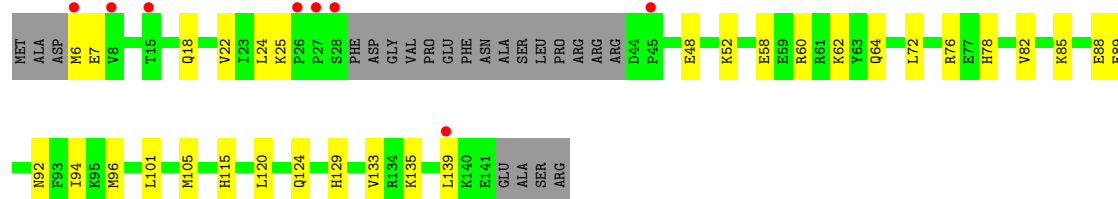




• Molecule 2: Tubulin beta-2B chain

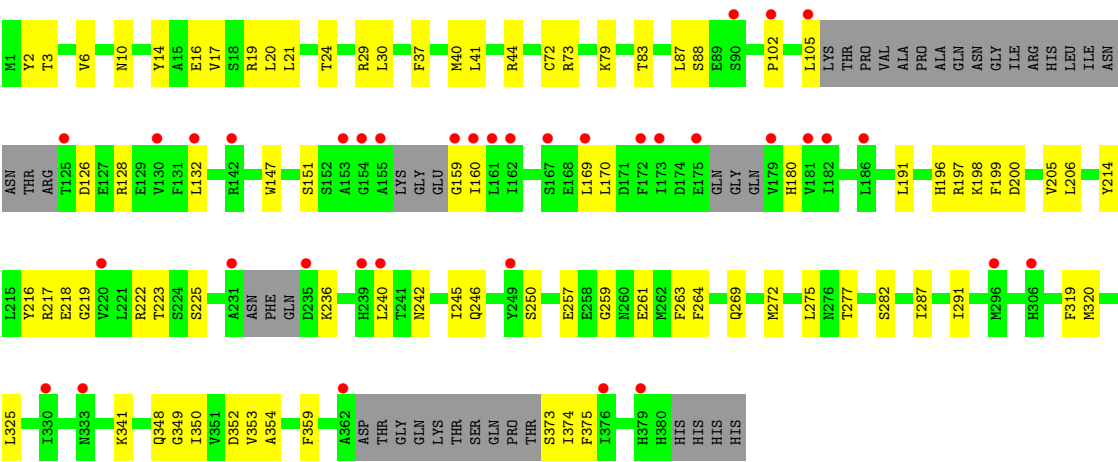


• Molecule 3: Stathmin-4



• Molecule 4: Tubulin-tyrosine ligase





4 Data and refinement statistics

Property	Value	Source
Space group	P 21 21 21	Depositor
Cell constants a, b, c, α , β , γ	105.03Å 157.92Å 181.43Å 90.00° 90.00° 90.00°	Depositor
Resolution (Å)	48.05 – 2.31 48.05 – 2.31	Depositor EDS
% Data completeness (in resolution range)	99.8 (48.05-2.31) 99.9 (48.05-2.31)	Depositor EDS
R_{merge}	0.11	Depositor
R_{sym}	(Not available)	Depositor
$\langle I/\sigma(I) \rangle$ ¹	1.16 (at 2.32Å)	Xtriage
Refinement program	PHENIX 1.21.1_5286	Depositor
R, R_{free}	0.211 , 0.235 0.213 , 0.237	Depositor DCC
R_{free} test set	6639 reflections (5.00%)	wwPDB-VP
Wilson B-factor (Å ²)	59.2	Xtriage
Anisotropy	0.198	Xtriage
Bulk solvent k_{sol} (e/Å ³), B_{sol} (Å ²)	0.32 , 39.5	EDS
L-test for twinning ²	$\langle L \rangle = 0.51$, $\langle L^2 \rangle = 0.34$	Xtriage
Estimated twinning fraction	No twinning to report.	Xtriage
F_o, F_c correlation	0.95	EDS
Total number of atoms	17946	wwPDB-VP
Average B, all atoms (Å ²)	75.0	wwPDB-VP

Xtriage's analysis on translational NCS is as follows: *The largest off-origin peak in the Patterson function is 2.50% of the height of the origin peak. No significant pseudotranslation is detected.*

¹Intensities estimated from amplitudes.

²Theoretical values of $\langle |L| \rangle$, $\langle L^2 \rangle$ for acentric reflections are 0.5, 0.333 respectively for untwinned datasets, and 0.375, 0.2 for perfectly twinned datasets.

5 Model quality [i](#)

5.1 Standard geometry [i](#)

Bond lengths and bond angles in the following residue types are not validated in this section: A1ISD, GDP, MG, GTP, MES, CA, ACP

The Z score for a bond length (or angle) is the number of standard deviations the observed value is removed from the expected value. A bond length (or angle) with $|Z| > 5$ is considered an outlier worth inspection. RMSZ is the root-mean-square of all Z scores of the bond lengths (or angles).

Mol	Chain	Bond lengths		Bond angles	
		RMSZ	$\# Z > 5$	RMSZ	$\# Z > 5$
1	A	0.07	0/3502	0.21	0/4754
1	C	0.08	0/3521	0.23	0/4780
2	B	0.07	0/3419	0.22	0/4629
2	D	0.06	0/3419	0.20	0/4630
3	E	0.06	0/1008	0.14	0/1337
4	F	0.05	0/2854	0.19	0/3853
All	All	0.07	0/17723	0.21	0/23983

There are no bond length outliers.

There are no bond angle outliers.

There are no chirality outliers.

There are no planarity outliers.

5.2 Too-close contacts [i](#)

In the following table, the Non-H and H(model) columns list the number of non-hydrogen atoms and hydrogen atoms in the chain respectively. The H(added) column lists the number of hydrogen atoms added and optimized by MolProbity. The Clashes column lists the number of clashes within the asymmetric unit, whereas Symm-Clashes lists symmetry-related clashes.

Mol	Chain	Non-H	H(model)	H(added)	Clashes	Symm-Clashes
1	A	3424	0	3334	70	0
1	C	3443	0	3352	66	0
2	B	3345	0	3227	79	0
2	D	3346	0	3222	83	0
3	E	1000	0	1018	20	0
4	F	2793	0	2766	59	0
5	A	32	0	12	1	0

Continued on next page...

Continued from previous page...

Mol	Chain	Non-H	H(model)	H(added)	Clashes	Symm-Clashes
5	C	32	0	12	0	0
6	A	1	0	0	0	0
6	B	1	0	0	0	0
6	C	1	0	0	0	0
6	D	1	0	0	0	0
6	F	1	0	0	0	0
7	A	1	0	0	0	0
7	B	1	0	0	0	0
7	C	1	0	0	0	0
7	E	1	0	0	0	0
8	B	28	0	12	1	0
8	D	28	0	12	2	0
9	B	12	0	13	1	0
10	D	78	63	0	0	0
11	F	31	0	14	0	0
12	A	50	0	0	2	0
12	B	68	0	0	3	0
12	C	115	0	0	3	0
12	D	26	0	0	2	0
12	E	8	0	0	1	0
12	F	15	0	0	1	0
All	All	17883	63	16994	367	0

The all-atom clashscore is defined as the number of clashes found per 1000 atoms (including hydrogen atoms). The all-atom clashscore for this structure is 11.

The worst 5 of 367 close contacts within the same asymmetric unit are listed below, sorted by their clash magnitude.

Atom-1	Atom-2	Interatomic distance (Å)	Clash overlap (Å)
2:B:47:GLU:HG2	2:B:245:PRO:HG3	1.46	0.98
2:D:1:MET:HE2	2:D:50:ASN:HB2	1.46	0.96
4:F:102:PRO:HG2	4:F:105:LEU:HD13	1.48	0.94
2:B:96:GLN:HB3	1:C:1:MET:HE2	1.56	0.88
4:F:236:LYS:HB3	4:F:240:LEU:HD13	1.56	0.87

There are no symmetry-related clashes.

5.3 Torsion angles ⓘ

5.3.1 Protein backbone ⓘ

In the following table, the Percentiles column shows the percent Ramachandran outliers of the chain as a percentile score with respect to all X-ray entries followed by that with respect to entries of similar resolution.

The Analysed column shows the number of residues for which the backbone conformation was analysed, and the total number of residues.

Mol	Chain	Analysed	Favoured	Allowed	Outliers	Percentiles	
1	A	436/451 (97%)	423 (97%)	13 (3%)	0	100	100
1	C	439/451 (97%)	430 (98%)	9 (2%)	0	100	100
2	B	420/445 (94%)	410 (98%)	10 (2%)	0	100	100
2	D	422/445 (95%)	412 (98%)	10 (2%)	0	100	100
3	E	117/143 (82%)	116 (99%)	1 (1%)	0	100	100
4	F	330/384 (86%)	319 (97%)	11 (3%)	0	100	100
All	All	2164/2319 (93%)	2110 (98%)	54 (2%)	0	100	100

There are no Ramachandran outliers to report.

5.3.2 Protein sidechains ⓘ

In the following table, the Percentiles column shows the percent sidechain outliers of the chain as a percentile score with respect to all X-ray entries followed by that with respect to entries of similar resolution.

The Analysed column shows the number of residues for which the sidechain conformation was analysed, and the total number of residues.

Mol	Chain	Analysed	Rotameric	Outliers	Percentiles	
1	A	369/379 (97%)	369 (100%)	0	100	100
1	C	372/379 (98%)	370 (100%)	2 (0%)	86	93
2	B	368/383 (96%)	368 (100%)	0	100	100
2	D	368/383 (96%)	368 (100%)	0	100	100
3	E	109/127 (86%)	109 (100%)	0	100	100
4	F	306/342 (90%)	306 (100%)	0	100	100
All	All	1892/1993 (95%)	1890 (100%)	2 (0%)	92	96

All (2) residues with a non-rotameric sidechain are listed below:

Mol	Chain	Res	Type
1	C	71	GLU
1	C	381	THR

Sometimes sidechains can be flipped to improve hydrogen bonding and reduce clashes. 5 of 23 such sidechains are listed below:

Mol	Chain	Res	Type
2	D	247	GLN
3	E	18	GLN
2	D	339	ASN
3	E	92	ASN
2	B	349	ASN

5.3.3 RNA [i](#)

There are no RNA molecules in this entry.

5.4 Non-standard residues in protein, DNA, RNA chains [i](#)

There are no non-standard protein/DNA/RNA residues in this entry.

5.5 Carbohydrates [i](#)

There are no oligosaccharides in this entry.

5.6 Ligand geometry [i](#)

Of 16 ligands modelled in this entry, 9 are monoatomic - leaving 7 for Mogul analysis.

In the following table, the Counts columns list the number of bonds (or angles) for which Mogul statistics could be retrieved, the number of bonds (or angles) that are observed in the model and the number of bonds (or angles) that are defined in the Chemical Component Dictionary. The Link column lists molecule types, if any, to which the group is linked. The Z score for a bond length (or angle) is the number of standard deviations the observed value is removed from the expected value. A bond length (or angle) with $|Z| > 2$ is considered an outlier worth inspection. RMSZ is the root-mean-square of all Z scores of the bond lengths (or angles).

Mol	Type	Chain	Res	Link	Bond lengths			Bond angles		
					Counts	RMSZ	$\# Z > 2$	Counts	RMSZ	$\# Z > 2$
8	GDP	B	501	6	24,30,30	0.94	1 (4%)	30,47,47	1.12	3 (10%)

Mol	Type	Chain	Res	Link	Bond lengths			Bond angles		
					Counts	RMSZ	# Z > 2	Counts	RMSZ	# Z > 2
10	A1ISD	D	503	-	84,86,86	2.78	28 (33%)	102,127,127	2.24	31 (30%)
9	MES	B	504	-	12,12,12	1.14	1 (8%)	14,16,16	0.92	1 (7%)
11	ACP	F	401	6	27,33,33	2.32	3 (11%)	32,52,52	1.19	4 (12%)
5	GTP	A	501	6	26,34,34	1.11	2 (7%)	32,54,54	1.46	6 (18%)
5	GTP	C	501	6	26,34,34	1.13	2 (7%)	32,54,54	1.44	5 (15%)
8	GDP	D	501	6	24,30,30	0.94	1 (4%)	30,47,47	1.28	4 (13%)

In the following table, the Chirals column lists the number of chiral outliers, the number of chiral centers analysed, the number of these observed in the model and the number defined in the Chemical Component Dictionary. Similar counts are reported in the Torsion and Rings columns. '-' means no outliers of that kind were identified.

Mol	Type	Chain	Res	Link	Chirals	Torsions	Rings
8	GDP	B	501	6	-	3/12/32/32	0/3/3/3
10	A1ISD	D	503	-	-	14/70/120/120	0/7/9/9
9	MES	B	504	-	-	0/6/14/14	0/1/1/1
11	ACP	F	401	6	-	6/15/38/38	0/3/3/3
5	GTP	A	501	6	-	6/18/38/38	0/3/3/3
5	GTP	C	501	6	-	8/18/38/38	0/3/3/3
8	GDP	D	501	6	-	2/12/32/32	0/3/3/3

The worst 5 of 38 bond length outliers are listed below:

Mol	Chain	Res	Type	Atoms	Z	Observed(Å)	Ideal(Å)
10	D	503	A1ISD	C50-N7	11.26	1.47	1.36
11	F	401	ACP	PB-O3A	10.93	1.70	1.58
10	D	503	A1ISD	O11-C50	9.21	1.40	1.22
10	D	503	A1ISD	C8-N1	6.79	1.49	1.35
10	D	503	A1ISD	C51-N7	6.00	1.51	1.46

The worst 5 of 54 bond angle outliers are listed below:

Mol	Chain	Res	Type	Atoms	Z	Observed(°)	Ideal(°)
10	D	503	A1ISD	C51-N7-C50	-9.10	109.38	113.12
10	D	503	A1ISD	O8-C29-C30	5.25	120.40	111.92
10	D	503	A1ISD	C48-C50-N7	5.11	109.46	106.44
10	D	503	A1ISD	C26-C25-C24	-4.93	109.88	121.05
10	D	503	A1ISD	C47-C51-N7	4.81	103.33	101.79

There are no chirality outliers.

5 of 39 torsion outliers are listed below:

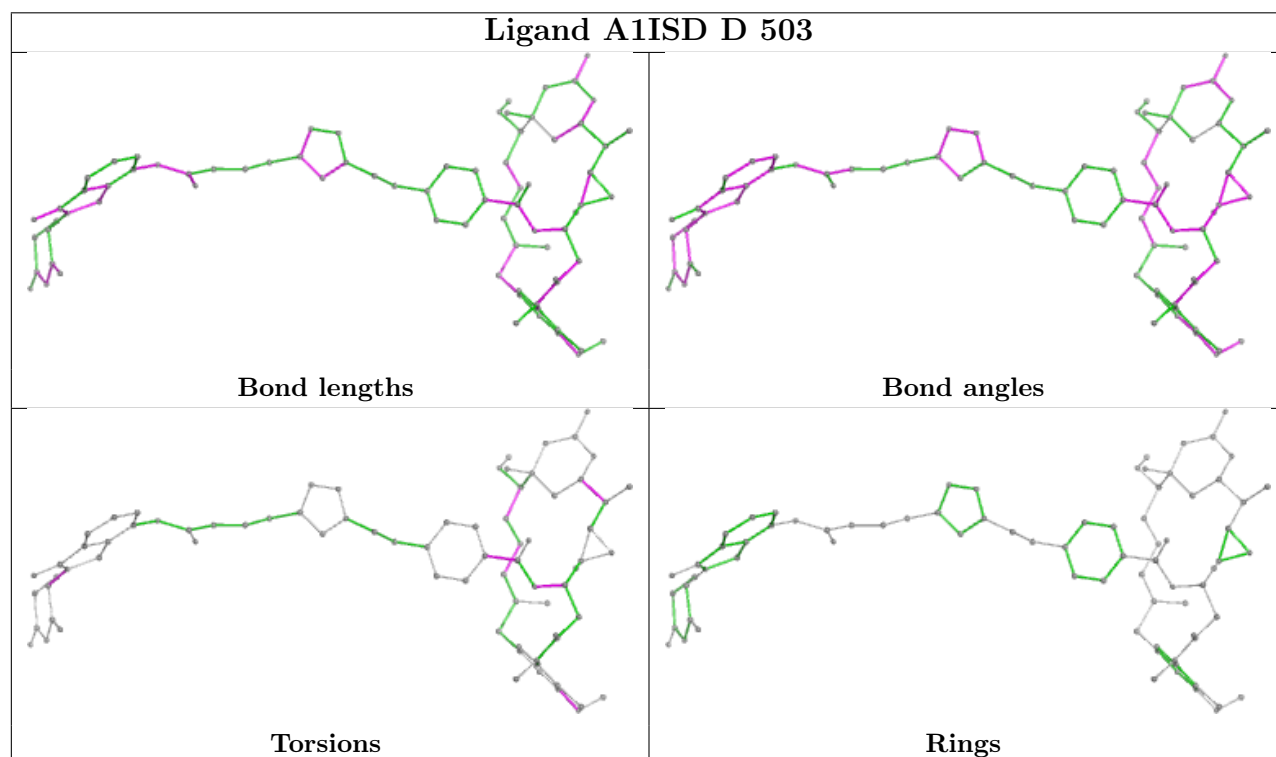
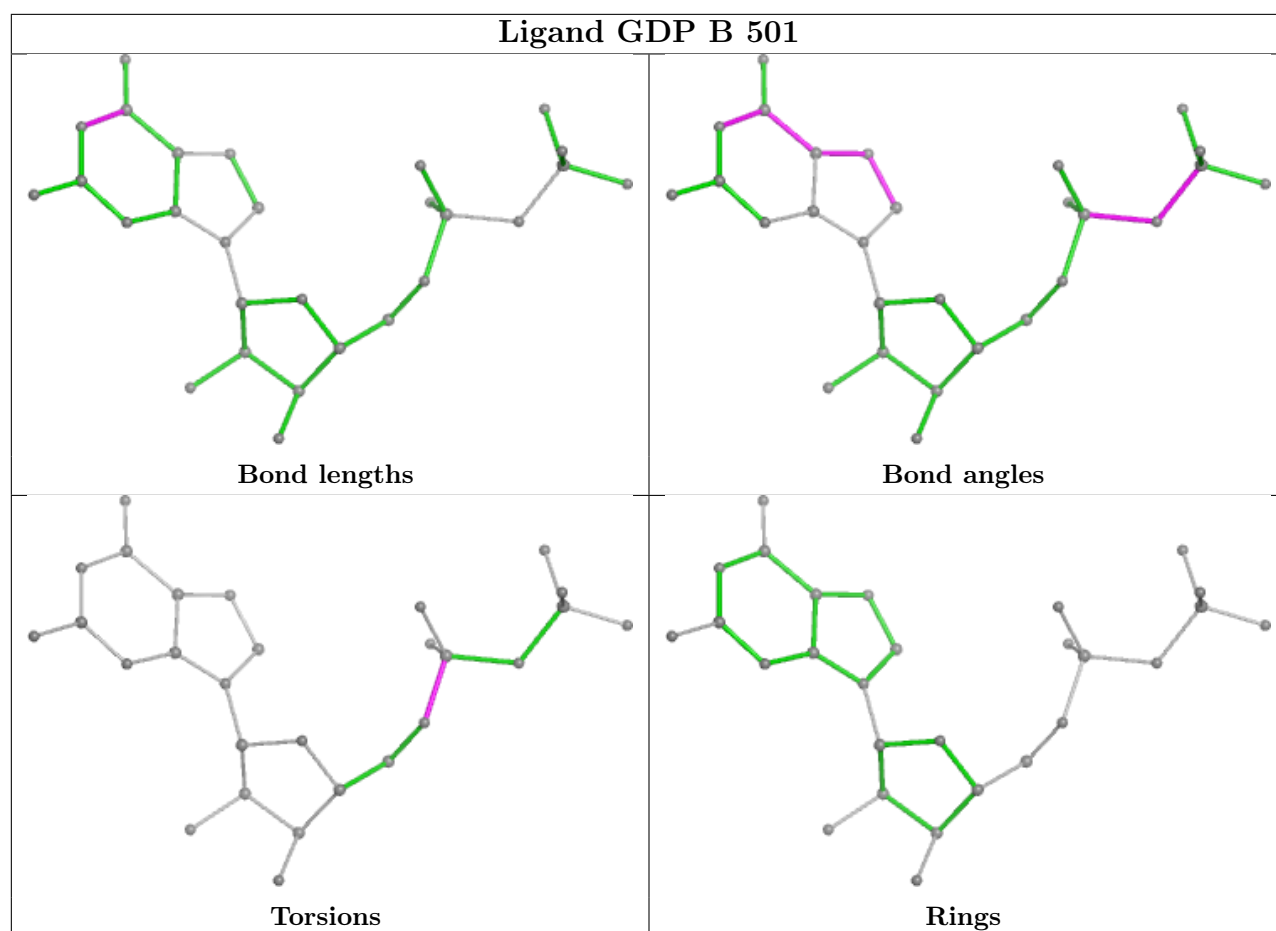
Mol	Chain	Res	Type	Atoms
5	A	501	GTP	C5'-O5'-PA-O1A
5	C	501	GTP	C5'-O5'-PA-O1A
8	B	501	GDP	C5'-O5'-PA-O1A
8	B	501	GDP	C5'-O5'-PA-O2A
10	D	503	A1ISD	C3-C2-O1-C4

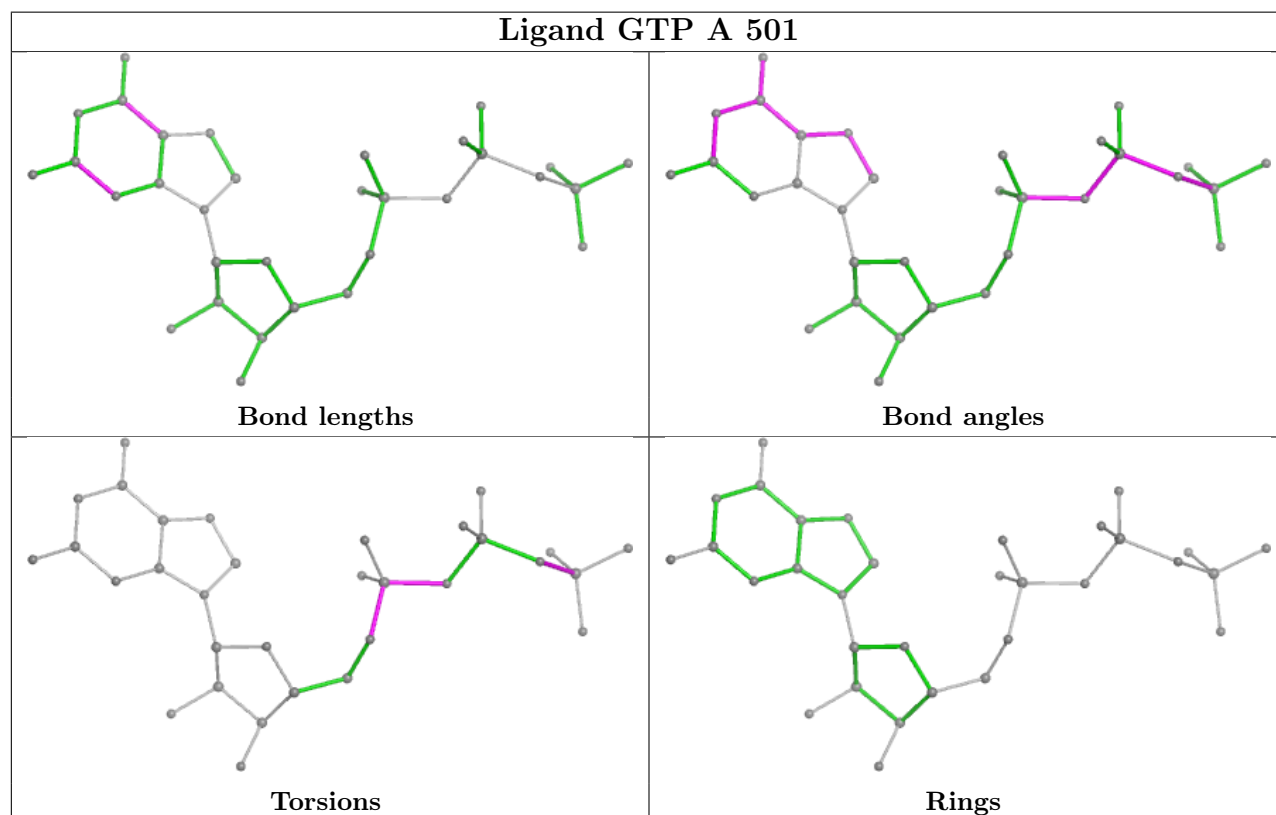
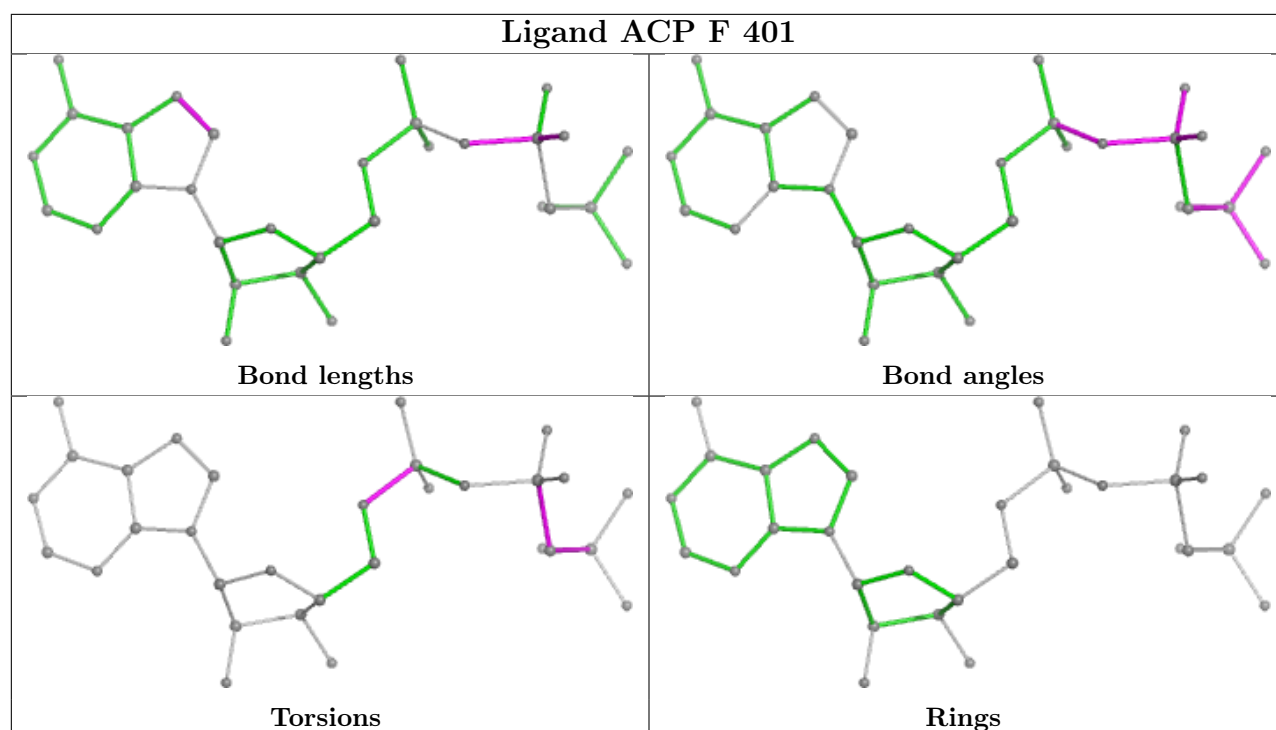
There are no ring outliers.

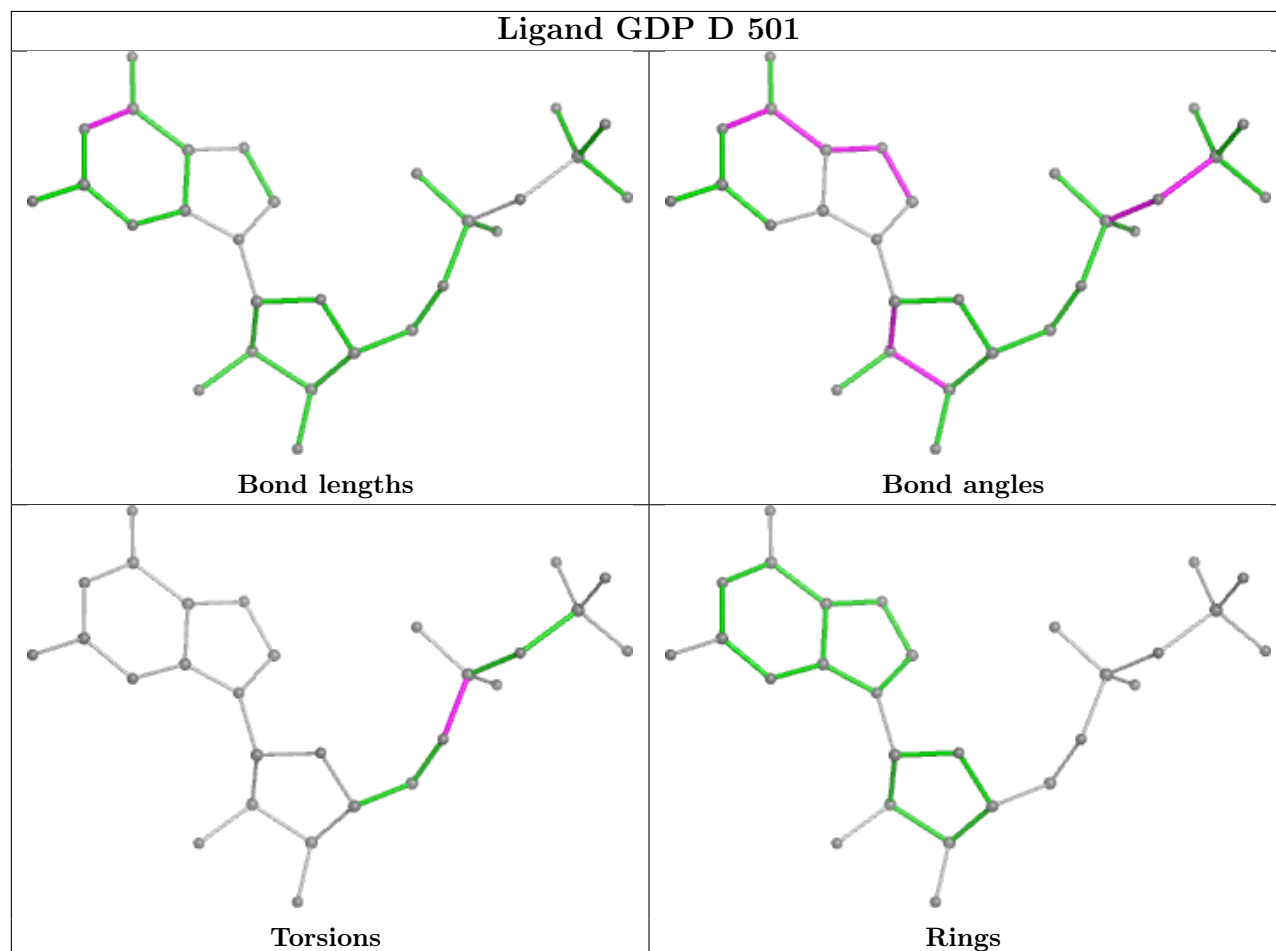
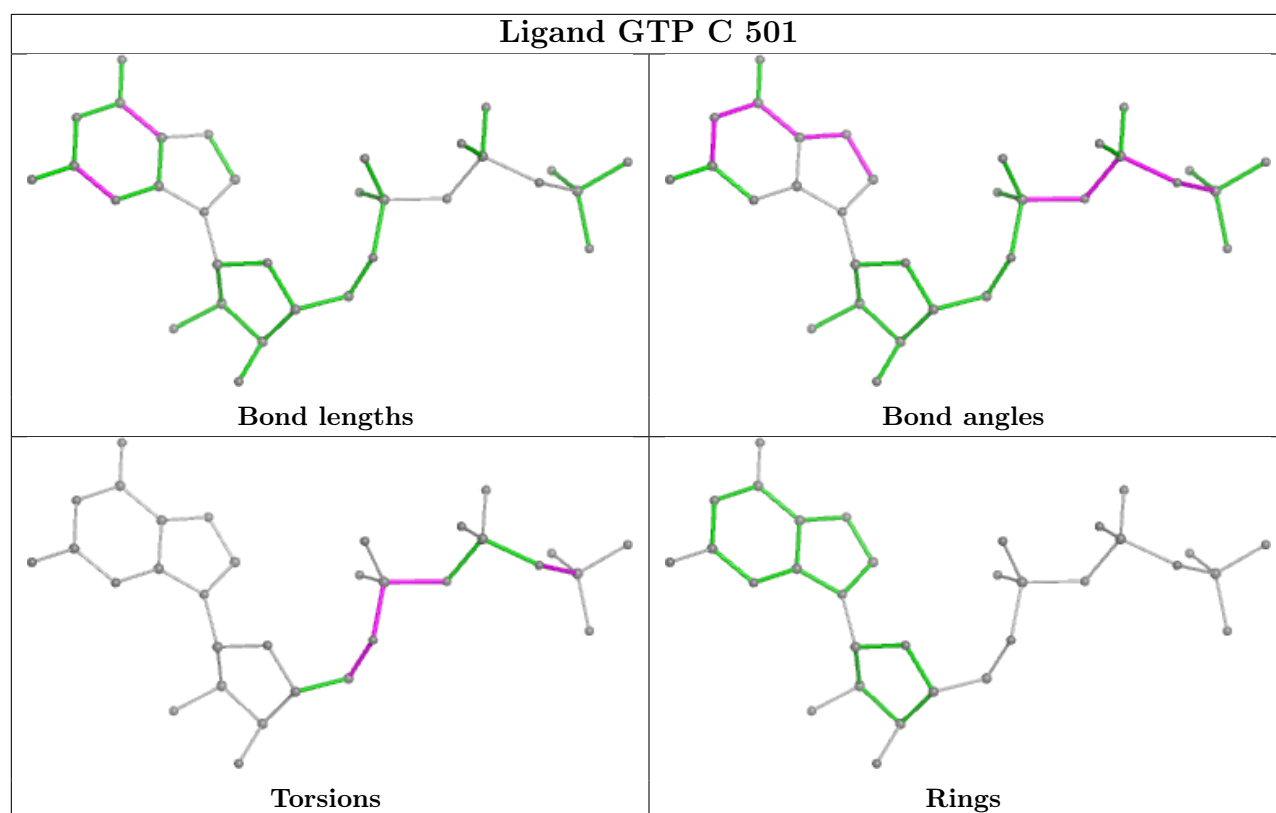
4 monomers are involved in 5 short contacts:

Mol	Chain	Res	Type	Clashes	Symm-Clashes
8	B	501	GDP	1	0
9	B	504	MES	1	0
5	A	501	GTP	1	0
8	D	501	GDP	2	0

The following is a two-dimensional graphical depiction of Mogul quality analysis of bond lengths, bond angles, torsion angles, and ring geometry for all instances of the Ligand of Interest. In addition, ligands with molecular weight > 250 and outliers as shown on the validation Tables will also be included. For torsion angles, if less than 5% of the Mogul distribution of torsion angles is within 10 degrees of the torsion angle in question, then that torsion angle is considered an outlier. Any bond that is central to one or more torsion angles identified as an outlier by Mogul will be highlighted in the graph. For rings, the root-mean-square deviation (RMSD) between the ring in question and similar rings identified by Mogul is calculated over all ring torsion angles. If the average RMSD is greater than 60 degrees and the minimal RMSD between the ring in question and any Mogul-identified rings is also greater than 60 degrees, then that ring is considered an outlier. The outliers are highlighted in purple. The color gray indicates Mogul did not find sufficient equivalents in the CSD to analyse the geometry.







5.7 Other polymers [i](#)

There are no such residues in this entry.

5.8 Polymer linkage issues [i](#)

There are no chain breaks in this entry.

6 Fit of model and data [i](#)

6.1 Protein, DNA and RNA chains [i](#)

In the following table, the column labelled ‘#RSRZ> 2’ contains the number (and percentage) of RSRZ outliers, followed by percent RSRZ outliers for the chain as percentile scores relative to all X-ray entries and entries of similar resolution. The OWAB column contains the minimum, median, 95th percentile and maximum values of the occupancy-weighted average B-factor per residue. The column labelled ‘Q< 0.9’ lists the number of (and percentage) of residues with an average occupancy less than 0.9.

Mol	Chain	Analysed	<RSRZ>	#RSRZ>2			OWAB(Å ²)	Q<0.9
1	A	438/451 (97%)	0.48	16 (3%)	45	48	50, 70, 98, 143	0
1	C	440/451 (97%)	0.19	16 (3%)	46	49	26, 56, 76, 104	1 (0%)
2	B	423/445 (95%)	0.41	16 (3%)	44	47	31, 64, 93, 125	1 (0%)
2	D	425/445 (95%)	0.62	24 (5%)	31	34	41, 79, 107, 140	1 (0%)
3	E	121/143 (84%)	0.81	8 (6%)	26	28	59, 80, 118, 125	0
4	F	342/384 (89%)	0.86	36 (10%)	13	15	63, 91, 151, 177	0
All	All	2189/2319 (94%)	0.51	116 (5%)	33	36	26, 72, 119, 177	3 (0%)

The worst 5 of 116 RSRZ outliers are listed below:

Mol	Chain	Res	Type	RSRZ
4	F	155	ALA	7.1
2	D	279	GLY	6.7
2	B	1	MET	5.4
4	F	159	GLY	4.8
4	F	179	VAL	4.2

6.2 Non-standard residues in protein, DNA, RNA chains [i](#)

There are no non-standard protein/DNA/RNA residues in this entry.

6.3 Carbohydrates [i](#)

There are no oligosaccharides in this entry.

6.4 Ligands

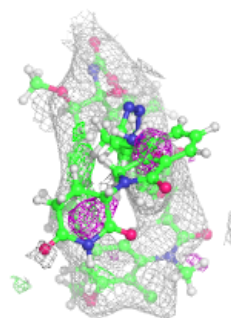
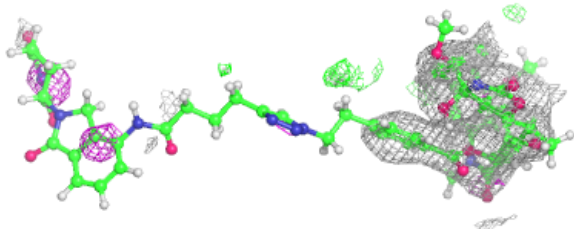
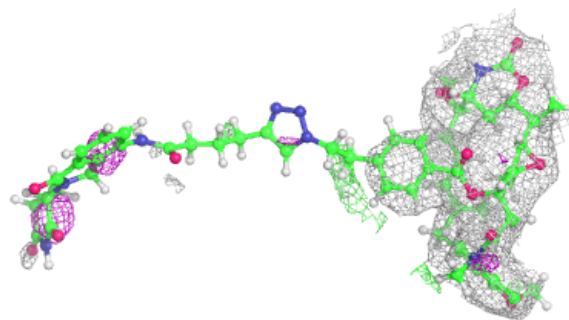
In the following table, the Atoms column lists the number of modelled atoms in the group and the number defined in the chemical component dictionary. The B-factors column lists the minimum, median, 95th percentile and maximum values of B factors of atoms in the group. The column labelled 'Q< 0.9' lists the number of atoms with occupancy less than 0.9.

Mol	Type	Chain	Res	Atoms	RSCC	RSR	B-factors(Å ²)	Q<0.9
6	MG	F	402	1/1	0.31	0.24	107,107,107,107	0
7	CA	B	503	1/1	0.54	0.27	97,97,97,97	0
10	A1ISD	D	503	78/78	0.72	0.16	98,125,211,216	0
7	CA	E	201	1/1	0.73	0.15	106,106,106,106	0
6	MG	D	502	1/1	0.78	0.12	87,87,87,87	0
11	ACP	F	401	31/31	0.86	0.12	99,109,117,120	0
7	CA	A	503	1/1	0.91	0.07	92,92,92,92	0
8	GDP	D	501	28/28	0.91	0.12	75,80,86,94	0
9	MES	B	504	12/12	0.92	0.10	54,62,69,73	0
5	GTP	A	501	32/32	0.96	0.07	44,54,59,60	0
5	GTP	C	501	32/32	0.97	0.07	42,48,51,52	0
8	GDP	B	501	28/28	0.97	0.07	44,51,56,58	0
6	MG	B	502	1/1	0.99	0.03	43,43,43,43	0
7	CA	C	503	1/1	0.99	0.04	74,74,74,74	0
6	MG	C	502	1/1	1.00	0.03	48,48,48,48	0
6	MG	A	502	1/1	1.00	0.04	53,53,53,53	0

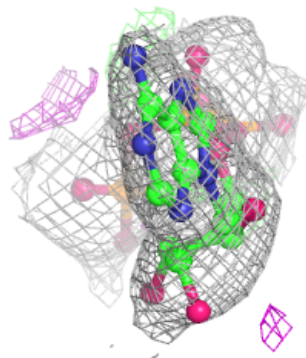
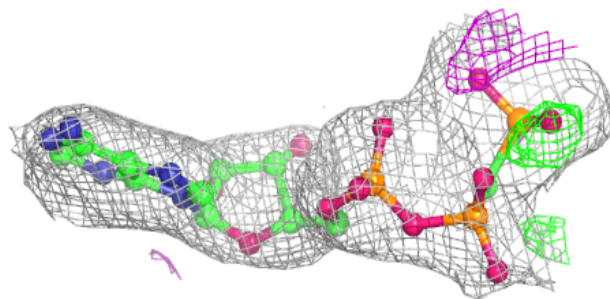
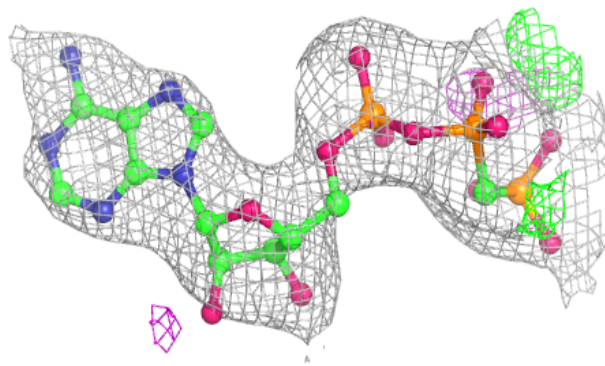
The following is a graphical depiction of the model fit to experimental electron density of all instances of the Ligand of Interest. In addition, ligands with molecular weight > 250 and outliers as shown on the geometry validation Tables will also be included. Each fit is shown from different orientation to approximate a three-dimensional view.

Electron density around A1ISD D 503:

$2mF_o-DF_c$ (at 0.7 rmsd) in gray
 mF_o-DF_c (at 3 rmsd) in purple (negative)
and green (positive)

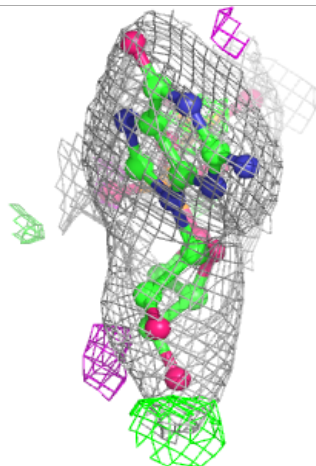
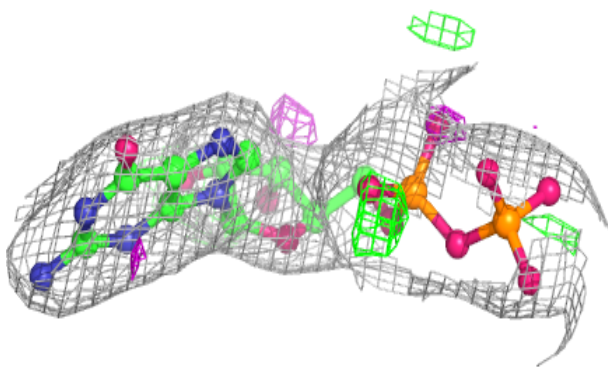
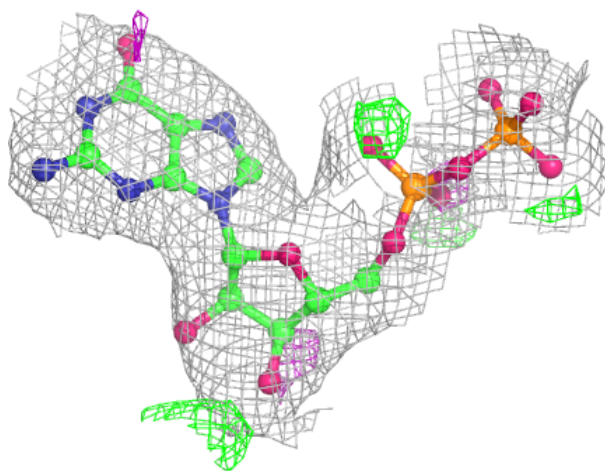
**Electron density around ACP F 401:**

$2mF_o-DF_c$ (at 0.7 rmsd) in gray
 mF_o-DF_c (at 3 rmsd) in purple (negative)
and green (positive)



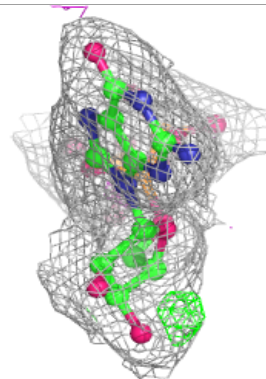
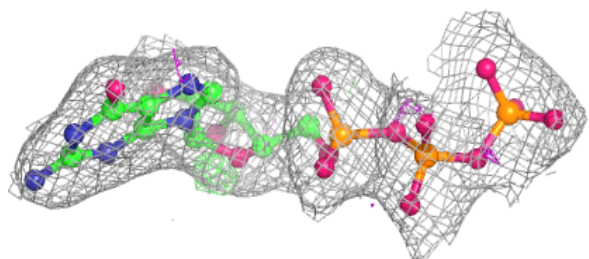
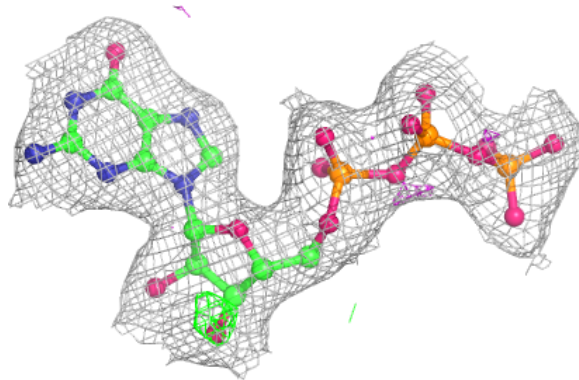
Electron density around GDP D 501:

$2mF_o-DF_c$ (at 0.7 rmsd) in gray
 mF_o-DF_c (at 3 rmsd) in purple (negative)
and green (positive)

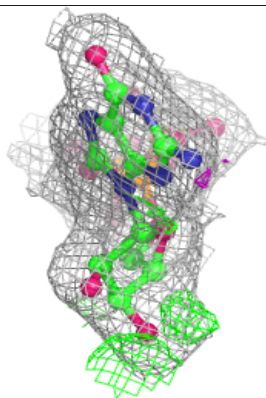
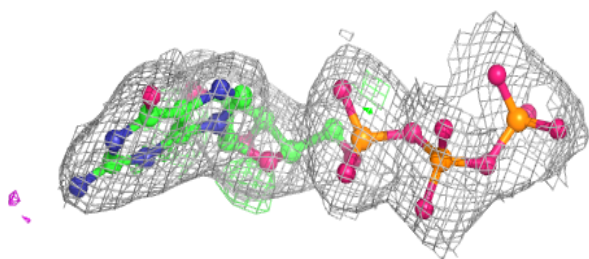
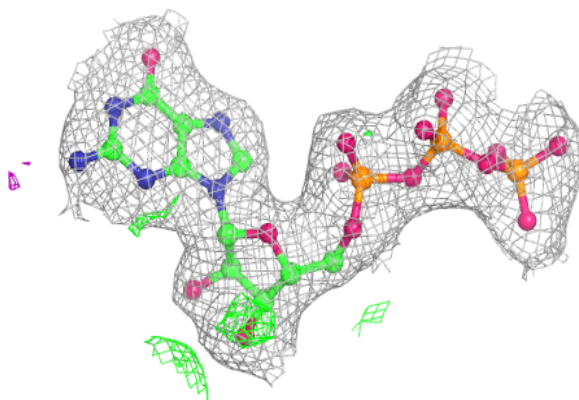


Electron density around GTP A 501:

$2mF_o-DF_c$ (at 0.7 rmsd) in gray
 mF_o-DF_c (at 3 rmsd) in purple (negative)
and green (positive)

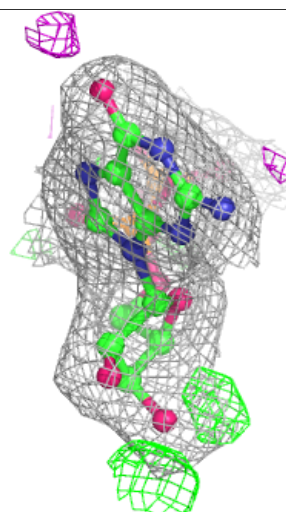
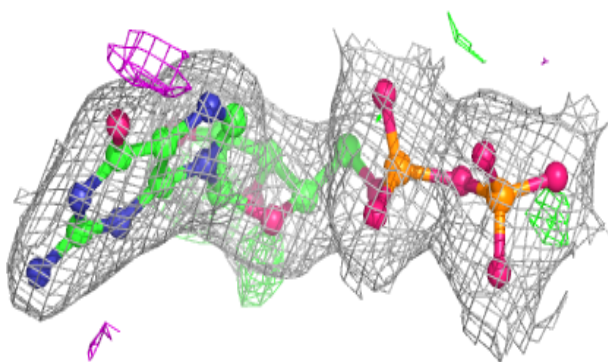
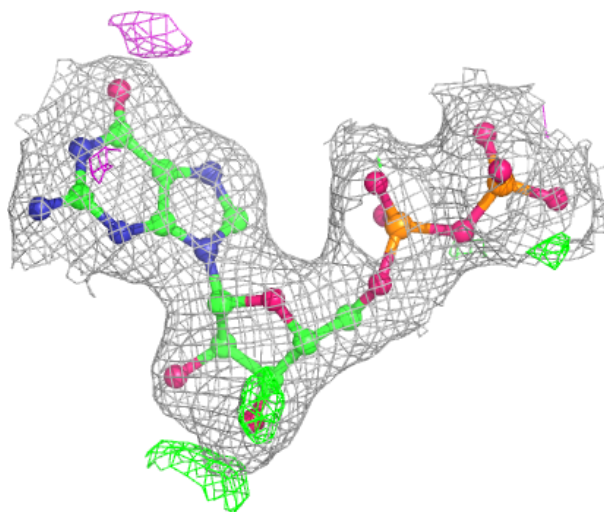
**Electron density around GTP C 501:**

$2mF_o-DF_c$ (at 0.7 rmsd) in gray
 mF_o-DF_c (at 3 rmsd) in purple (negative)
and green (positive)



Electron density around GDP B 501:

$2mF_o-DF_c$ (at 0.7 rmsd) in gray
 mF_o-DF_c (at 3 rmsd) in purple (negative)
and green (positive)



6.5 Other polymers [i](#)

There are no such residues in this entry.