



Full wwPDB X-ray Structure Validation Report ⓘ

Jun 23, 2024 – 02:20 AM EDT

PDB ID : 6HAI
Title : AlbAM131A mutant in complex with albicidin , albicidin resistance protein
Authors : Koehnke, J.; Sikandar, A.
Deposited on : 2018-08-07
Resolution : 2.20 Å(reported)

This is a Full wwPDB X-ray Structure Validation Report for a publicly released PDB entry.

We welcome your comments at validation@mail.wwpdb.org

A user guide is available at

<https://www.wwpdb.org/validation/2017/XrayValidationReportHelp>

with specific help available everywhere you see the ⓘ symbol.

The types of validation reports are described at

<http://www.wwpdb.org/validation/2017/FAQs#types>.

The following versions of software and data (see [references ⓘ](#)) were used in the production of this report:

MolProbity : 4.02b-467
Mogul : 2022.3.0, CSD as543be (2022)
Xtriage (Phenix) : 1.20.1
EDS : 2.37.1
buster-report : 1.1.7 (2018)
Percentile statistics : 20191225.v01 (using entries in the PDB archive December 25th 2019)
Refmac : 5.8.0158
CCP4 : 7.0.044 (Gargrove)
Ideal geometry (proteins) : Engh & Huber (2001)
Ideal geometry (DNA, RNA) : Parkinson et al. (1996)
Validation Pipeline (wwPDB-VP) : 2.37.1

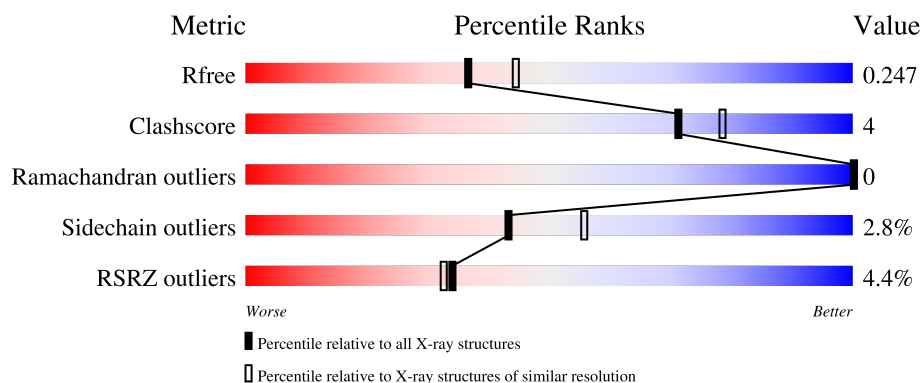
1 Overall quality at a glance

The following experimental techniques were used to determine the structure:

X-RAY DIFFRACTION


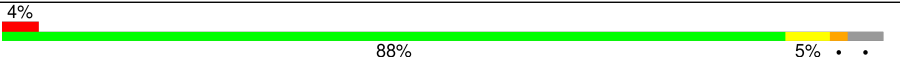
The reported resolution of this entry is 2.20 Å.

Percentile scores (ranging between 0-100) for global validation metrics of the entry are shown in the following graphic. The table shows the number of entries on which the scores are based.



Metric	Whole archive (#Entries)	Similar resolution (#Entries, resolution range(Å))
R_{free}	130704	4898 (2.20-2.20)
Clashscore	141614	5594 (2.20-2.20)
Ramachandran outliers	138981	5503 (2.20-2.20)
Sidechain outliers	138945	5504 (2.20-2.20)
RSRZ outliers	127900	4800 (2.20-2.20)

The table below summarises the geometric issues observed across the polymeric chains and their fit to the electron density. The red, orange, yellow and green segments of the lower bar indicate the fraction of residues that contain outliers for ≥ 3 , 2, 1 and 0 types of geometric quality criteria respectively. A grey segment represents the fraction of residues that are not modelled. The numeric value for each fraction is indicated below the corresponding segment, with a dot representing fractions $\leq 5\%$. The upper red bar (where present) indicates the fraction of residues that have poor fit to the electron density. The numeric value is given above the bar.

Mol	Chain	Length	Quality of chain
1	A	226	
1	B	226	

2 Entry composition

There are 4 unique types of molecules in this entry. The entry contains 3766 atoms, of which 0 are hydrogens and 0 are deuteriums.

In the tables below, the ZeroOcc column contains the number of atoms modelled with zero occupancy, the AltConf column contains the number of residues with at least one atom in alternate conformation and the Trace column contains the number of residues modelled with at most 2 atoms.

- Molecule 1 is a protein called Albicidin resistance protein.

Mol	Chain	Residues	Atoms					ZeroOcc	AltConf	Trace
1	A	212	Total	C	N	O	S	0	1	0
			1753	1103	310	327	13			
1	B	216	Total	C	N	O	S	0	0	0
			1787	1123	319	331	14			

There are 26 discrepancies between the modelled and reference sequences:

Chain	Residue	Modelled	Actual	Comment	Reference
A	-3	GLY	-	expression tag	UNP Q8KRS7
A	-2	SER	-	expression tag	UNP Q8KRS7
A	-1	MET	-	expression tag	UNP Q8KRS7
A	0	LYS	-	expression tag	UNP Q8KRS7
A	39	ASP	GLY	conflict	UNP Q8KRS7
A	116	ASP	ALA	conflict	UNP Q8KRS7
A	131	ALA	MET	conflict	UNP Q8KRS7
A	154	GLY	GLU	conflict	UNP Q8KRS7
A	218	LEU	-	expression tag	UNP Q8KRS7
A	219	PRO	-	expression tag	UNP Q8KRS7
A	220	PRO	-	expression tag	UNP Q8KRS7
A	221	ASN	-	expression tag	UNP Q8KRS7
A	222	ASN	-	expression tag	UNP Q8KRS7
B	-3	GLY	-	expression tag	UNP Q8KRS7
B	-2	SER	-	expression tag	UNP Q8KRS7
B	-1	MET	-	expression tag	UNP Q8KRS7
B	0	LYS	-	expression tag	UNP Q8KRS7
B	39	ASP	GLY	conflict	UNP Q8KRS7
B	116	ASP	ALA	conflict	UNP Q8KRS7
B	131	ALA	MET	conflict	UNP Q8KRS7
B	154	GLY	GLU	conflict	UNP Q8KRS7
B	218	LEU	-	expression tag	UNP Q8KRS7
B	219	PRO	-	expression tag	UNP Q8KRS7
B	220	PRO	-	expression tag	UNP Q8KRS7
B	221	ASN	-	expression tag	UNP Q8KRS7

Continued on next page...

Continued from previous page...

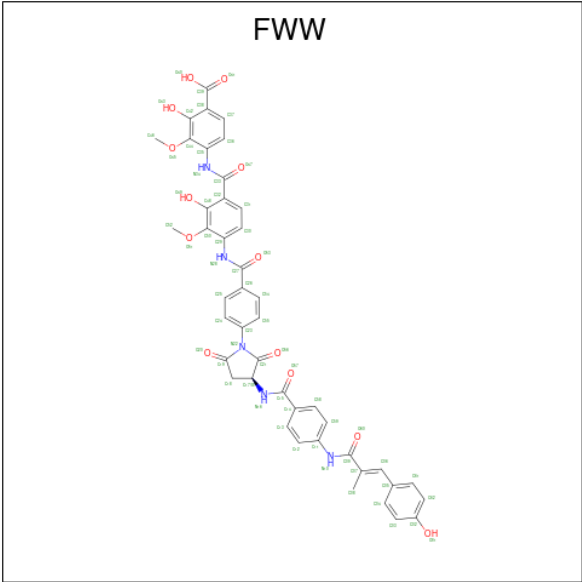
Chain	Residue	Modelled	Actual	Comment	Reference
B	222	ASN	-	expression tag	UNP Q8KRS7

- Molecule 2 is SULFATE ION (three-letter code: SO4) (formula: O₄S).



Mol	Chain	Residues	Atoms			ZeroOcc	AltConf
2	A	1	Total	O	S	0	0
			5	4	1		
2	A	1	Total	O	S	0	0
			5	4	1		

- Molecule 3 is 4-[[4-[[4-[(3 {S})-3-[[4-[({E})-3-(4-hydroxyphenyl)-2-methyl-prop-2-enoyl]amino]phenyl]carbonylamino]-2,5-bis(oxidanylidene)pyrrolidin-1-yl]phenyl]carbonylamino]-3-methoxy-2-oxidanyl-phenyl]carbonylamino]-3-methoxy-2-oxidanyl-benzoic acid (three-letter code: FWW) (formula: C₄₄H₃₇N₅O₁₃).



Mol	Chain	Residues	Atoms				ZeroOcc	AltConf
3	A	1	Total	C	N	O	0	0
			62	44	5	13		
3	B	1	Total	C	N	O	0	0
			62	44	5	13		

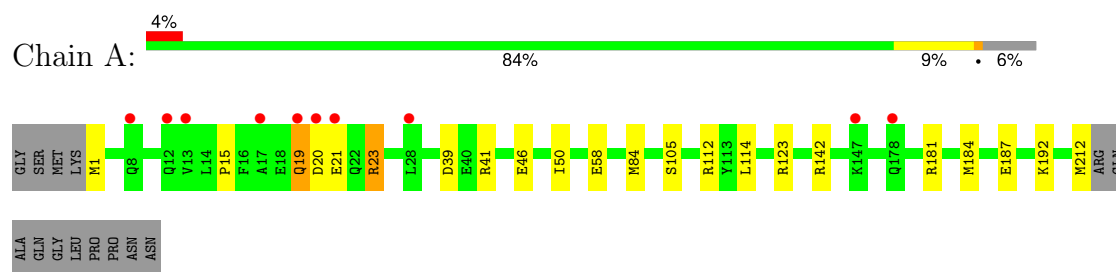
- Molecule 4 is water.

Mol	Chain	Residues	Atoms		ZeroOcc	AltConf
4	A	42	Total	O	0	0
			42	42		
4	B	50	Total	O	0	0
			50	50		

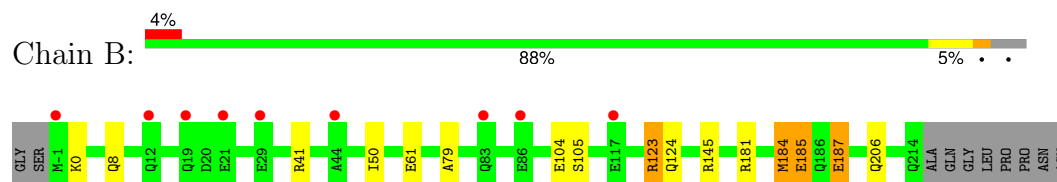
3 Residue-property plots [i](#)

These plots are drawn for all protein, RNA, DNA and oligosaccharide chains in the entry. The first graphic for a chain summarises the proportions of the various outlier classes displayed in the second graphic. The second graphic shows the sequence view annotated by issues in geometry and electron density. Residues are color-coded according to the number of geometric quality criteria for which they contain at least one outlier: green = 0, yellow = 1, orange = 2 and red = 3 or more. A red dot above a residue indicates a poor fit to the electron density ($RSRZ > 2$). Stretches of 2 or more consecutive residues without any outlier are shown as a green connector. Residues present in the sample, but not in the model, are shown in grey.

- Molecule 1: Albicidin resistance protein



- Molecule 1: Albicidin resistance protein



4 Data and refinement statistics

Property	Value	Source
Space group	C 2 2 21	Depositor
Cell constants a, b, c, α , β , γ	53.26Å 123.50Å 161.17Å 90.00° 90.00° 90.00°	Depositor
Resolution (Å)	49.01 – 2.20 49.01 – 2.20	Depositor EDS
% Data completeness (in resolution range)	99.5 (49.01-2.20) 99.5 (49.01-2.20)	Depositor EDS
R_{merge}	0.05	Depositor
R_{sym}	(Not available)	Depositor
$\langle I/\sigma(I) \rangle$ ¹	2.89 (at 2.20Å)	Xtriage
Refinement program	PHENIX (1.13_2998: ???)	Depositor
R, R_{free}	0.210 , 0.240 0.220 , 0.247	Depositor DCC
R_{free} test set	1388 reflections (5.08%)	wwPDB-VP
Wilson B-factor (Å ²)	37.7	Xtriage
Anisotropy	0.398	Xtriage
Bulk solvent k_{sol} (e/Å ³), B_{sol} (Å ²)	0.42 , 55.0	EDS
L-test for twinning ²	$\langle L \rangle = 0.49$, $\langle L^2 \rangle = 0.32$	Xtriage
Estimated twinning fraction	No twinning to report.	Xtriage
F_o, F_c correlation	0.94	EDS
Total number of atoms	3766	wwPDB-VP
Average B, all atoms (Å ²)	50.0	wwPDB-VP

Xtriage's analysis on translational NCS is as follows: *The largest off-origin peak in the Patterson function is 5.64% of the height of the origin peak. No significant pseudotranslation is detected.*

¹Intensities estimated from amplitudes.

²Theoretical values of $\langle |L| \rangle$, $\langle L^2 \rangle$ for acentric reflections are 0.5, 0.333 respectively for untwinned datasets, and 0.375, 0.2 for perfectly twinned datasets.

5 Model quality

5.1 Standard geometry

Bond lengths and bond angles in the following residue types are not validated in this section: SO4, FWW

The Z score for a bond length (or angle) is the number of standard deviations the observed value is removed from the expected value. A bond length (or angle) with $|Z| > 5$ is considered an outlier worth inspection. RMSZ is the root-mean-square of all Z scores of the bond lengths (or angles).

Mol	Chain	Bond lengths		Bond angles	
		RMSZ	$\# Z > 5$	RMSZ	$\# Z > 5$
1	A	0.36	0/1799	0.46	0/2435
1	B	0.44	2/1830 (0.1%)	0.45	1/2474 (0.0%)
All	All	0.41	2/3629 (0.1%)	0.45	1/4909 (0.0%)

Chiral center outliers are detected by calculating the chiral volume of a chiral center and verifying if the center is modelled as a planar moiety or with the opposite hand. A planarity outlier is detected by checking planarity of atoms in a peptide group, atoms in a mainchain group or atoms of a sidechain that are expected to be planar.

Mol	Chain	#Chirality outliers	#Planarity outliers
1	A	0	1

All (2) bond length outliers are listed below:

Mol	Chain	Res	Type	Atoms	Z	Observed(Å)	Ideal(Å)
1	B	187	GLU	CD-OE1	-5.94	1.19	1.25
1	B	185	GLU	CD-OE2	-5.24	1.19	1.25

All (1) bond angle outliers are listed below:

Mol	Chain	Res	Type	Atoms	Z	Observed(°)	Ideal(°)
1	B	181	ARG	NE-CZ-NH1	-6.41	117.10	120.30

There are no chirality outliers.

All (1) planarity outliers are listed below:

Mol	Chain	Res	Type	Group
1	A	23	ARG	Sidechain

5.2 Too-close contacts ⓘ

In the following table, the Non-H and H(model) columns list the number of non-hydrogen atoms and hydrogen atoms in the chain respectively. The H(added) column lists the number of hydrogen atoms added and optimized by MolProbity. The Clashes column lists the number of clashes within the asymmetric unit, whereas Symm-Clashes lists symmetry-related clashes.

Mol	Chain	Non-H	H(model)	H(added)	Clashes	Symm-Clashes
1	A	1753	0	1680	13	0
1	B	1787	0	1718	13	0
2	A	10	0	0	1	0
3	A	62	0	0	1	0
3	B	62	0	0	0	0
4	A	42	0	0	5	0
4	B	50	0	0	8	0
All	All	3766	0	3398	25	0

The all-atom clashscore is defined as the number of clashes found per 1000 atoms (including hydrogen atoms). The all-atom clashscore for this structure is 4.

All (25) close contacts within the same asymmetric unit are listed below, sorted by their clash magnitude.

Atom-1	Atom-2	Interatomic distance (Å)	Clash overlap (Å)
1:A:19:GLN:OE1	4:A:401:HOH:O	1.81	0.98
1:B:61:GLU:OE1	4:B:401:HOH:O	1.82	0.96
1:B:187:GLU:O	4:B:402:HOH:O	1.95	0.85
1:A:114:LEU:O	4:A:402:HOH:O	2.00	0.78
1:B:206:GLN:OE1	4:B:403:HOH:O	2.08	0.71
2:A:303:SO4:O3	4:A:403:HOH:O	2.08	0.70
1:B:0:LYS:O	4:B:404:HOH:O	2.13	0.66
1:A:41:ARG:O	4:A:404:HOH:O	2.15	0.64
1:B:61:GLU:OE1	4:B:405:HOH:O	2.16	0.62
1:B:104:GLU:OE1	1:B:123:ARG:NH2	2.37	0.58
1:A:112:ARG:NH2	1:A:187:GLU:OE2	2.41	0.54
1:A:58:GLU:OE2	1:A:192:LYS:NZ	2.40	0.50
1:A:181:ARG:NH2	3:A:302:FWW:O40	2.42	0.49
1:B:184:MET:HE3	1:B:185:GLU:N	2.27	0.48
1:A:50:ILE:HG23	1:A:105:SER:HB3	1.97	0.47
1:B:61:GLU:OE2	4:B:406:HOH:O	2.21	0.45
1:A:1:MET:HE1	1:A:84:MET:HA	1.99	0.44
1:A:19:GLN:HG2	1:A:19:GLN:O	2.18	0.44
1:B:145:ARG:NH1	4:B:411:HOH:O	2.50	0.44
1:A:123:ARG:HD2	1:B:79:ALA:O	2.19	0.42

Continued on next page...

Continued from previous page...

Atom-1	Atom-2	Interatomic distance (Å)	Clash overlap (Å)
1:A:142:ARG:NH2	4:A:410:HOH:O	2.53	0.42
1:B:0:LYS:HB3	4:B:404:HOH:O	2.21	0.41
1:B:50:ILE:HG23	1:B:105:SER:HB3	2.03	0.40
1:A:39:ASP:OD2	1:B:41:ARG:NH2	2.52	0.40
1:A:15:PRO:HB3	1:A:23:ARG:NH2	2.36	0.40

There are no symmetry-related clashes.

5.3 Torsion angles [i](#)

5.3.1 Protein backbone [i](#)

In the following table, the Percentiles column shows the percent Ramachandran outliers of the chain as a percentile score with respect to all X-ray entries followed by that with respect to entries of similar resolution.

The Analysed column shows the number of residues for which the backbone conformation was analysed, and the total number of residues.

Mol	Chain	Analysed	Favoured	Allowed	Outliers	Percentiles	
1	A	211/226 (93%)	209 (99%)	2 (1%)	0	100	100
1	B	214/226 (95%)	213 (100%)	1 (0%)	0	100	100
All	All	425/452 (94%)	422 (99%)	3 (1%)	0	100	100

There are no Ramachandran outliers to report.

5.3.2 Protein sidechains [i](#)

In the following table, the Percentiles column shows the percent sidechain outliers of the chain as a percentile score with respect to all X-ray entries followed by that with respect to entries of similar resolution.

The Analysed column shows the number of residues for which the sidechain conformation was analysed, and the total number of residues.

Mol	Chain	Analysed	Rotameric	Outliers	Percentiles	
1	A	180/190 (95%)	174 (97%)	6 (3%)	38	49
1	B	183/190 (96%)	179 (98%)	4 (2%)	52	65
All	All	363/380 (96%)	353 (97%)	10 (3%)	43	56

All (10) residues with a non-rotameric sidechain are listed below:

Mol	Chain	Res	Type
1	A	19	GLN
1	A	20	ASP
1	A	21	GLU
1	A	46	GLU
1	A	184	MET
1	A	212	MET
1	B	8	GLN
1	B	123	ARG
1	B	124	GLN
1	B	184	MET

Sometimes sidechains can be flipped to improve hydrogen bonding and reduce clashes. There are no such sidechains identified.

5.3.3 RNA [i](#)

There are no RNA molecules in this entry.

5.4 Non-standard residues in protein, DNA, RNA chains [i](#)

There are no non-standard protein/DNA/RNA residues in this entry.

5.5 Carbohydrates [i](#)

There are no monosaccharides in this entry.

5.6 Ligand geometry [i](#)

4 ligands are modelled in this entry.

In the following table, the Counts columns list the number of bonds (or angles) for which Mogul statistics could be retrieved, the number of bonds (or angles) that are observed in the model and the number of bonds (or angles) that are defined in the Chemical Component Dictionary. The Link column lists molecule types, if any, to which the group is linked. The Z score for a bond length (or angle) is the number of standard deviations the observed value is removed from the expected value. A bond length (or angle) with $|Z| > 2$ is considered an outlier worth inspection. RMSZ is the root-mean-square of all Z scores of the bond lengths (or angles).

Mol	Type	Chain	Res	Link	Bond lengths			Bond angles		
					Counts	RMSZ	# Z > 2	Counts	RMSZ	# Z > 2
2	SO4	A	301	-	4,4,4	0.25	0	6,6,6	0.09	0
2	SO4	A	303	-	4,4,4	0.23	0	6,6,6	0.09	0
3	FWW	A	302	-	67,67,67	1.18	7 (10%)	93,96,96	2.22	34 (36%)
3	FWW	B	301	-	67,67,67	1.26	8 (11%)	93,96,96	2.15	34 (36%)

In the following table, the Chirals column lists the number of chiral outliers, the number of chiral centers analysed, the number of these observed in the model and the number defined in the Chemical Component Dictionary. Similar counts are reported in the Torsion and Rings columns. '-' means no outliers of that kind were identified.

Mol	Type	Chain	Res	Link	Chirals	Torsions	Rings
3	FWW	B	301	-	-	2/48/64/64	0/6/6/6
3	FWW	A	302	-	-	4/48/64/64	0/6/6/6

All (15) bond length outliers are listed below:

Mol	Chain	Res	Type	Atoms	Z	Observed(Å)	Ideal(Å)
3	B	301	FWW	C23-N22	-3.92	1.38	1.44
3	B	301	FWW	C18-C17	-3.35	1.49	1.53
3	A	302	FWW	C23-N22	-3.32	1.39	1.44
3	B	301	FWW	C09-N10	3.03	1.41	1.35
3	B	301	FWW	C38-C39	2.81	1.55	1.49
3	A	302	FWW	C15-N16	2.77	1.40	1.34
3	B	301	FWW	C15-N16	2.69	1.40	1.34
3	A	302	FWW	C08-C07	-2.66	1.44	1.50
3	A	302	FWW	O51-C52	2.61	1.50	1.42
3	B	301	FWW	C08-C07	-2.61	1.44	1.50
3	A	302	FWW	C18-C17	-2.46	1.50	1.53
3	A	302	FWW	C38-C39	2.45	1.54	1.49
3	A	302	FWW	C09-N10	2.36	1.40	1.35
3	B	301	FWW	C29-N28	-2.33	1.37	1.41
3	B	301	FWW	C17-C21	2.03	1.55	1.52

All (68) bond angle outliers are listed below:

Mol	Chain	Res	Type	Atoms	Z	Observed(°)	Ideal(°)
3	A	302	FWW	C08-C07-C06	-7.07	114.75	125.14
3	B	301	FWW	C08-C07-C06	-5.65	116.84	125.14
3	A	302	FWW	C21-N22-C19	-5.56	106.49	112.46
3	B	301	FWW	C21-N22-C19	-5.45	106.61	112.46
3	A	302	FWW	C31-C32-C48	-5.45	113.48	118.76

Continued on next page...

Continued from previous page...

Mol	Chain	Res	Type	Atoms	Z	Observed(°)	Ideal(°)
3	B	301	FWW	C21-C17-N16	-5.13	104.63	111.55
3	B	301	FWW	C31-C32-C48	-5.11	113.81	118.76
3	A	302	FWW	C21-C17-N16	-4.71	105.19	111.55
3	A	302	FWW	C18-C19-N22	4.44	111.54	108.06
3	B	301	FWW	C18-C19-N22	4.36	111.48	108.06
3	B	301	FWW	C59-C11-C12	-3.81	113.98	119.04
3	A	302	FWW	C59-C11-C12	-3.74	114.07	119.04
3	B	301	FWW	C50-C29-N28	3.40	125.01	116.74
3	A	302	FWW	C50-C29-N28	3.39	125.00	116.74
3	B	301	FWW	C58-C14-C13	-3.28	114.39	118.57
3	A	302	FWW	C32-C48-C50	3.27	123.82	119.74
3	A	302	FWW	C07-C09-N10	3.25	127.43	116.19
3	A	302	FWW	C32-C33-N34	3.21	122.69	116.03
3	A	302	FWW	C06-C07-C09	3.21	130.23	120.85
3	A	302	FWW	C30-C29-C50	-3.17	114.78	119.36
3	A	302	FWW	O60-C09-C07	-3.13	115.73	121.49
3	B	301	FWW	C37-C38-C42	-3.12	115.74	118.76
3	B	301	FWW	C14-C15-N16	3.11	122.81	117.04
3	A	302	FWW	C14-C15-N16	3.11	122.81	117.04
3	B	301	FWW	C32-C48-C50	3.11	123.62	119.74
3	A	302	FWW	C37-C38-C42	-3.10	115.76	118.76
3	A	302	FWW	C54-C26-C25	-3.09	114.64	118.57
3	B	301	FWW	C54-C26-C25	-3.03	114.72	118.57
3	A	302	FWW	C58-C14-C13	-3.02	114.72	118.57
3	B	301	FWW	C30-C29-C50	-3.02	114.99	119.36
3	A	302	FWW	O60-C09-N10	-2.98	116.81	123.89
3	B	301	FWW	C06-C07-C09	2.96	129.51	120.85
3	B	301	FWW	C24-C23-N22	2.85	123.07	119.65
3	B	301	FWW	C26-C27-N28	2.79	122.67	115.90
3	A	302	FWW	C36-C35-C44	-2.78	115.33	119.36
3	B	301	FWW	O60-C09-C07	-2.78	116.37	121.49
3	B	301	FWW	C07-C09-N10	2.74	125.65	116.19
3	A	302	FWW	C26-C27-N28	2.63	122.30	115.90
3	B	301	FWW	O41-C39-C38	-2.62	115.72	121.97
3	A	302	FWW	C23-N22-C21	2.58	126.69	123.59
3	A	302	FWW	C24-C25-C26	2.52	123.50	120.80
3	B	301	FWW	O60-C09-N10	-2.51	117.94	123.89
3	B	301	FWW	O57-C15-N16	-2.49	117.72	122.47
3	B	301	FWW	C31-C32-C33	2.49	125.17	118.53
3	B	301	FWW	C24-C25-C26	2.43	123.39	120.80
3	B	301	FWW	C18-C17-C21	-2.42	101.57	104.45
3	A	302	FWW	O41-C39-C38	-2.42	116.19	121.97

Continued on next page...

Continued from previous page...

Mol	Chain	Res	Type	Atoms	Z	Observed(°)	Ideal(°)
3	B	301	FWW	C32-C33-N34	2.38	120.97	116.03
3	B	301	FWW	C23-N22-C19	2.38	127.38	123.17
3	B	301	FWW	C36-C35-C44	-2.34	115.97	119.36
3	A	302	FWW	C38-C42-C44	2.31	122.62	119.74
3	A	302	FWW	O47-C33-C32	-2.30	116.83	121.03
3	B	301	FWW	C58-C59-C11	2.26	122.91	120.30
3	B	301	FWW	C42-C38-C39	2.25	122.37	119.86
3	A	302	FWW	C31-C32-C33	2.25	124.52	118.53
3	A	302	FWW	C13-C12-C11	2.24	122.88	120.30
3	A	302	FWW	C12-C13-C14	2.24	123.19	120.80
3	B	301	FWW	O56-C21-C17	-2.23	123.13	126.65
3	A	302	FWW	O56-C21-C17	-2.22	123.13	126.65
3	B	301	FWW	C38-C42-C44	2.20	122.49	119.74
3	B	301	FWW	C13-C12-C11	2.19	122.82	120.30
3	A	302	FWW	C44-C35-N34	2.17	122.02	116.74
3	A	302	FWW	O57-C15-N16	-2.14	118.40	122.47
3	A	302	FWW	C55-C23-N22	2.05	122.10	119.65
3	A	302	FWW	C23-N22-C19	2.03	126.77	123.17
3	A	302	FWW	C18-C17-C21	-2.03	102.03	104.45
3	B	301	FWW	C31-C30-C29	2.03	123.49	119.57
3	B	301	FWW	C12-C13-C14	2.02	122.96	120.80

There are no chirality outliers.

All (6) torsion outliers are listed below:

Mol	Chain	Res	Type	Atoms
3	A	302	FWW	C61-C05-C06-C07
3	A	302	FWW	C04-C05-C06-C07
3	A	302	FWW	C42-C38-C39-O40
3	A	302	FWW	C42-C38-C39-O41
3	B	301	FWW	C61-C05-C06-C07
3	B	301	FWW	C04-C05-C06-C07

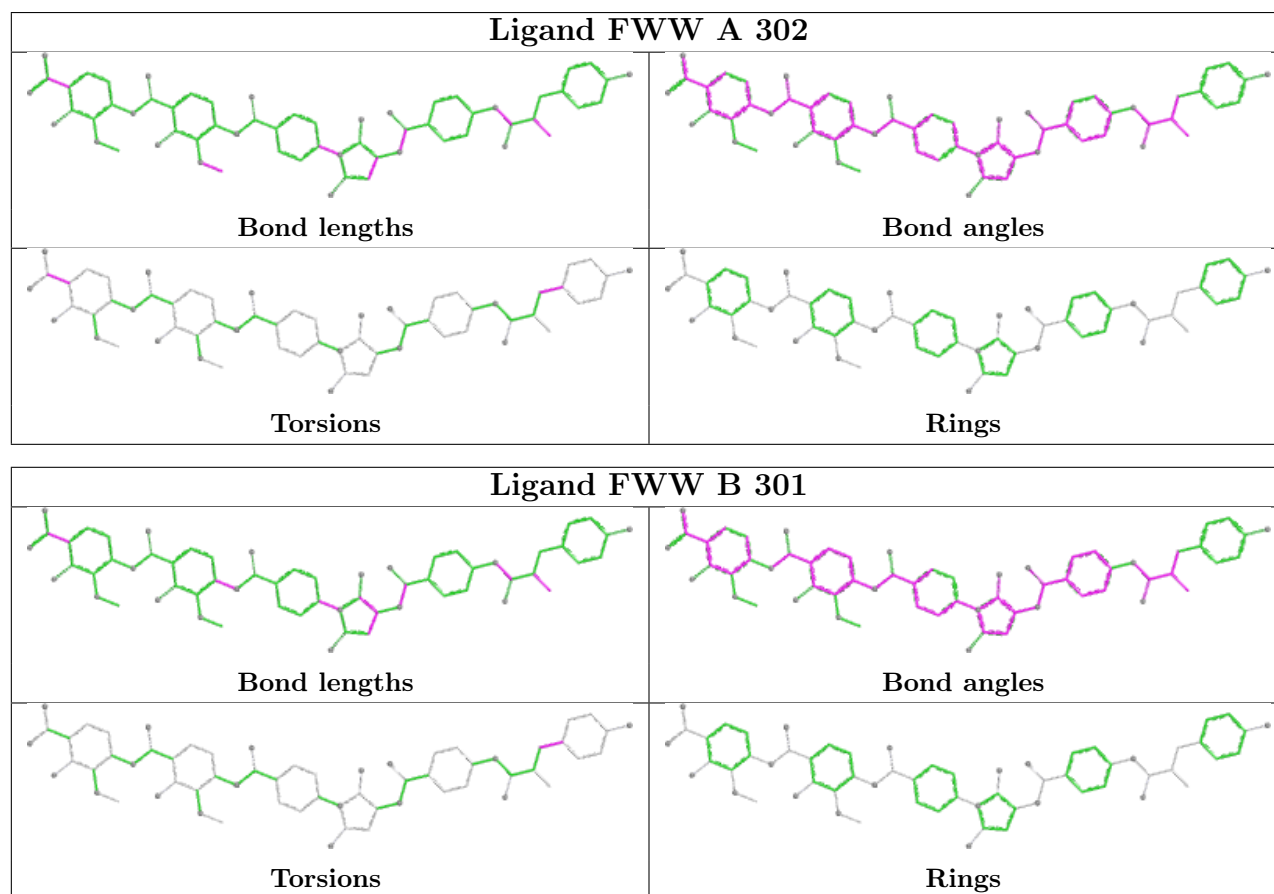
There are no ring outliers.

2 monomers are involved in 2 short contacts:

Mol	Chain	Res	Type	Clashes	Symm-Clashes
2	A	303	SO4	1	0
3	A	302	FWW	1	0

The following is a two-dimensional graphical depiction of Mogul quality analysis of bond lengths,

bond angles, torsion angles, and ring geometry for all instances of the Ligand of Interest. In addition, ligands with molecular weight > 250 and outliers as shown on the validation Tables will also be included. For torsion angles, if less than 5% of the Mogul distribution of torsion angles is within 10 degrees of the torsion angle in question, then that torsion angle is considered an outlier. Any bond that is central to one or more torsion angles identified as an outlier by Mogul will be highlighted in the graph. For rings, the root-mean-square deviation (RMSD) between the ring in question and similar rings identified by Mogul is calculated over all ring torsion angles. If the average RMSD is greater than 60 degrees and the minimal RMSD between the ring in question and any Mogul-identified rings is also greater than 60 degrees, then that ring is considered an outlier. The outliers are highlighted in purple. The color gray indicates Mogul did not find sufficient equivalents in the CSD to analyse the geometry.



5.7 Other polymers [i](#)

There are no such residues in this entry.

5.8 Polymer linkage issues [i](#)

There are no chain breaks in this entry.

6 Fit of model and data [i](#)

6.1 Protein, DNA and RNA chains [i](#)

In the following table, the column labelled ‘#RSRZ> 2’ contains the number (and percentage) of RSRZ outliers, followed by percent RSRZ outliers for the chain as percentile scores relative to all X-ray entries and entries of similar resolution. The OWAB column contains the minimum, median, 95th percentile and maximum values of the occupancy-weighted average B-factor per residue. The column labelled ‘Q< 0.9’ lists the number of (and percentage) of residues with an average occupancy less than 0.9.

Mol	Chain	Analysed	<RSRZ>	#RSRZ>2	OWAB(Å ²)	Q<0.9
1	A	212/226 (93%)	0.38	10 (4%) 31 30	28, 46, 78, 160	0
1	B	216/226 (95%)	0.37	9 (4%) 36 34	33, 47, 75, 99	0
All	All	428/452 (94%)	0.37	19 (4%) 34 32	28, 47, 77, 160	0

All (19) RSRZ outliers are listed below:

Mol	Chain	Res	Type	RSRZ
1	A	21	GLU	5.8
1	B	86	GLU	4.4
1	B	21	GLU	4.1
1	A	20	ASP	3.9
1	A	19	GLN	3.8
1	A	13	VAL	3.8
1	B	-1	MET	3.3
1	B	83	GLN	3.2
1	B	19	GLN	3.2
1	B	29	GLU	3.1
1	A	178	GLN	2.8
1	A	8	GLN	2.8
1	A	28	LEU	2.4
1	B	117	GLU	2.4
1	B	44	ALA	2.3
1	B	12	GLN	2.2
1	A	12	GLN	2.2
1	A	17	ALA	2.1
1	A	147	LYS	2.0

6.2 Non-standard residues in protein, DNA, RNA chains [i](#)

There are no non-standard protein/DNA/RNA residues in this entry.

6.3 Carbohydrates [i](#)

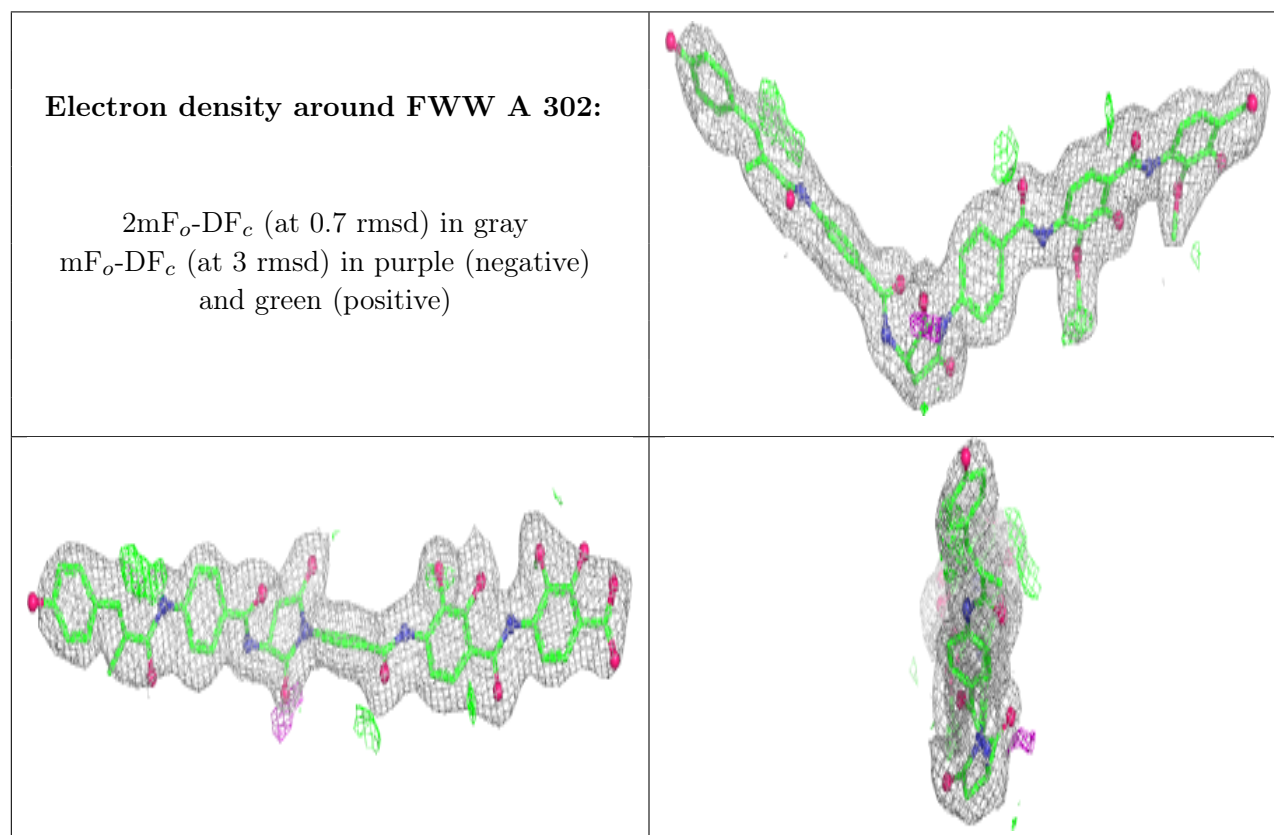
There are no monosaccharides in this entry.

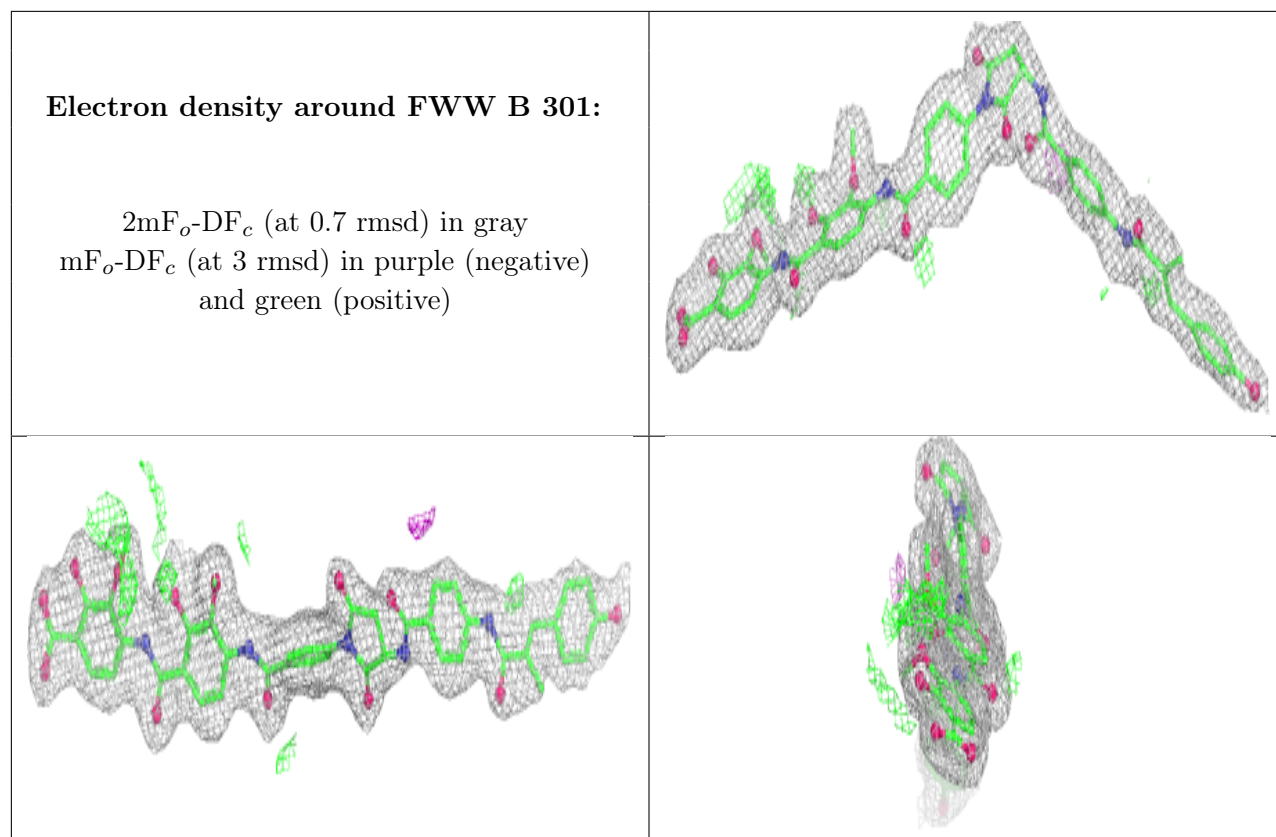
6.4 Ligands [i](#)

In the following table, the Atoms column lists the number of modelled atoms in the group and the number defined in the chemical component dictionary. The B-factors column lists the minimum, median, 95th percentile and maximum values of B factors of atoms in the group. The column labelled 'Q< 0.9' lists the number of atoms with occupancy less than 0.9.

Mol	Type	Chain	Res	Atoms	RSCC	RSR	B-factors(\AA^2)	Q<0.9
2	SO4	A	303	5/5	0.86	0.15	83,95,96,96	0
2	SO4	A	301	5/5	0.92	0.14	96,96,98,98	0
3	FWW	A	302	62/62	0.92	0.16	28,46,84,90	0
3	FWW	B	301	62/62	0.93	0.16	29,45,61,64	0

The following is a graphical depiction of the model fit to experimental electron density of all instances of the Ligand of Interest. In addition, ligands with molecular weight > 250 and outliers as shown on the geometry validation Tables will also be included. Each fit is shown from different orientation to approximate a three-dimensional view.





6.5 Other polymers [i](#)

There are no such residues in this entry.