



Full wwPDB X-ray Structure Validation Report ⓘ

Oct 20, 2024 – 08:16 AM EDT

PDB ID : 4HMP
Title : Crystal structure of iron uptake ABC transporter substrate-binding protein PiaA from *Streptococcus pneumoniae* TIGR4
Authors : Cheng, W.; Li, Q.; Jiang, Y.-L.; Chen, Y.; Zhou, C.-Z.
Deposited on : 2012-10-18
Resolution : 2.70 Å(reported)

This is a Full wwPDB X-ray Structure Validation Report for a publicly released PDB entry.

We welcome your comments at validation@mail.wwpdb.org

A user guide is available at

<https://www.wwpdb.org/validation/2017/XrayValidationReportHelp>

with specific help available everywhere you see the ⓘ symbol.

The types of validation reports are described at

<http://www.wwpdb.org/validation/2017/FAQs#types>.

The following versions of software and data (see [references ⓘ](#)) were used in the production of this report:

MolProbity	:	4.02b-467
Mogul	:	2022.3.0, CSD as543be (2022)
Xtriage (Phenix)	:	1.20.1
EDS	:	3.0
Percentile statistics	:	20231227.v01 (using entries in the PDB archive December 27th 2023)
CCP4	:	9.0.003 (Gargrove)
Density-Fitness	:	1.0.11
Ideal geometry (proteins)	:	Engh & Huber (2001)
Ideal geometry (DNA, RNA)	:	Parkinson et al. (1996)
Validation Pipeline (wwPDB-VP)	:	2.39

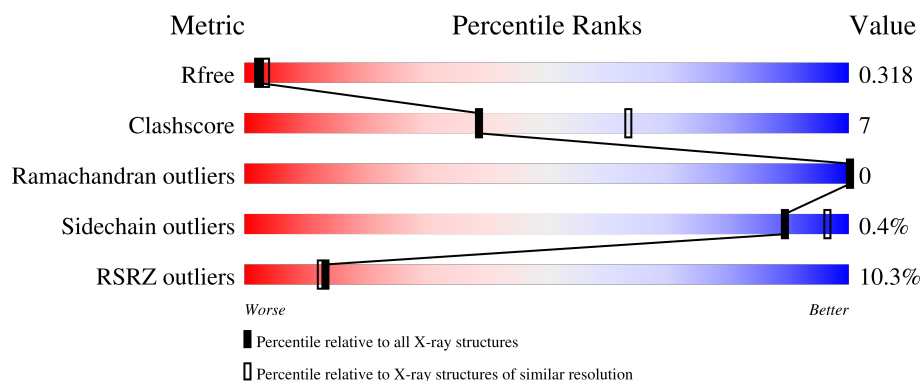
1 Overall quality at a glance

The following experimental techniques were used to determine the structure:

X-RAY DIFFRACTION

The reported resolution of this entry is 2.70 Å.

Percentile scores (ranging between 0-100) for global validation metrics of the entry are shown in the following graphic. The table shows the number of entries on which the scores are based.



Metric	Whole archive (#Entries)	Similar resolution (#Entries, resolution range(Å))
R_{free}	164625	3333 (2.70-2.70)
Clashscore	180529	3684 (2.70-2.70)
Ramachandran outliers	177936	3633 (2.70-2.70)
Sidechain outliers	177891	3633 (2.70-2.70)
RSRZ outliers	164620	3333 (2.70-2.70)

The table below summarises the geometric issues observed across the polymeric chains and their fit to the electron density. The red, orange, yellow and green segments of the lower bar indicate the fraction of residues that contain outliers for ≥ 3 , 2, 1 and 0 types of geometric quality criteria respectively. A grey segment represents the fraction of residues that are not modelled. The numeric value for each fraction is indicated below the corresponding segment, with a dot representing fractions $\leq 5\%$. The upper red bar (where present) indicates the fraction of residues that have poor fit to the electron density. The numeric value is given above the bar.

Mol	Chain	Length	Quality of chain
1	A	328	<div> <div>10%</div> <div>77%</div> <div>11%</div> <div>12%</div> </div>
1	B	328	<div> <div>8%</div> <div>78%</div> <div>9%</div> <div>12%</div> </div>

The following table lists non-polymeric compounds, carbohydrate monomers and non-standard residues in protein, DNA, RNA chains that are outliers for geometric or electron-density-fit criteria:

Mol	Type	Chain	Res	Chirality	Geometry	Clashes	Electron density
3	PG4	B	417	-	-	X	-

2 Entry composition

There are 6 unique types of molecules in this entry. The entry contains 4593 atoms, of which 0 are hydrogens and 0 are deuteriums.

In the tables below, the ZeroOcc column contains the number of atoms modelled with zero occupancy, the AltConf column contains the number of residues with at least one atom in alternate conformation and the Trace column contains the number of residues modelled with at most 2 atoms.

- Molecule 1 is a protein called Iron-compound ABC transporter, iron compound-binding protein.

Mol	Chain	Residues	Atoms						ZeroOcc	AltConf	Trace
1	A	289	Total	C	N	O	S	Se	0	0	0
			2227	1426	364	432	2	3			
1	B	289	Total	C	N	O	S	Se	1	0	0
			2216	1419	361	431	2	3			

There are 18 discrepancies between the modelled and reference sequences:

Chain	Residue	Modelled	Actual	Comment	Reference
A	14	MSE	-	expression tag	UNP Q97R09
A	15	GLY	-	expression tag	UNP Q97R09
A	16	HIS	-	expression tag	UNP Q97R09
A	17	HIS	-	expression tag	UNP Q97R09
A	18	HIS	-	expression tag	UNP Q97R09
A	19	HIS	-	expression tag	UNP Q97R09
A	20	HIS	-	expression tag	UNP Q97R09
A	21	HIS	-	expression tag	UNP Q97R09
A	22	MSE	-	expression tag	UNP Q97R09
B	14	MSE	-	expression tag	UNP Q97R09
B	15	GLY	-	expression tag	UNP Q97R09
B	16	HIS	-	expression tag	UNP Q97R09
B	17	HIS	-	expression tag	UNP Q97R09
B	18	HIS	-	expression tag	UNP Q97R09
B	19	HIS	-	expression tag	UNP Q97R09
B	20	HIS	-	expression tag	UNP Q97R09
B	21	HIS	-	expression tag	UNP Q97R09
B	22	MSE	-	expression tag	UNP Q97R09

- Molecule 2 is CADMIUM ION (three-letter code: CD) (formula: Cd).

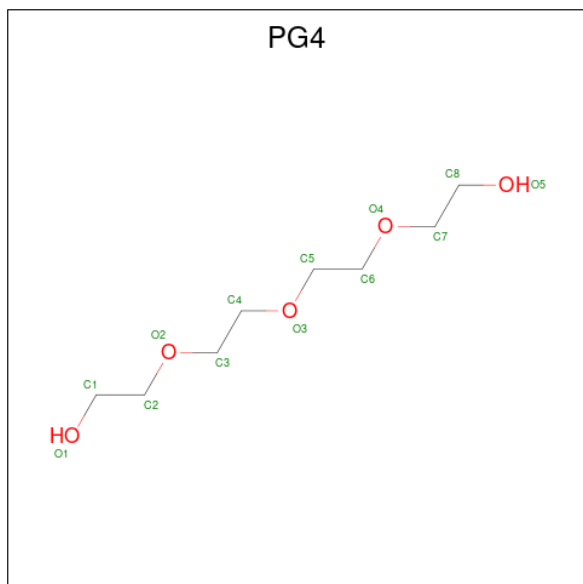
Mol	Chain	Residues	Atoms		ZeroOcc	AltConf
2	A	15	Total	Cd	0	0
			15	15		

Continued on next page...

Continued from previous page...

Mol	Chain	Residues	Atoms		ZeroOcc	AltConf
2	B	16	Total	Cd	0	0
			16	16		

- Molecule 3 is TETRAETHYLENE GLYCOL (three-letter code: PG4) (formula: $C_8H_{18}O_5$).



Mol	Chain	Residues	Atoms			ZeroOcc	AltConf
3	A	1	Total	C	O	0	0
			13	8	5		
3	B	1	Total	C	O	0	0
			13	8	5		

- Molecule 4 is GLYCEROL (three-letter code: GOL) (formula: $C_3H_8O_3$).



Mol	Chain	Residues	Atoms			ZeroOcc	AltConf
4	A	1	Total	C	O	0	0
			6	3	3		

- Molecule 5 is 1,2-ETHANEDIOL (three-letter code: EDO) (formula: $C_2H_6O_2$).



Mol	Chain	Residues	Atoms			ZeroOcc	AltConf
5	A	1	Total	C	O	0	0
			4	2	2		
5	A	1	Total	C	O	0	0
			4	2	2		

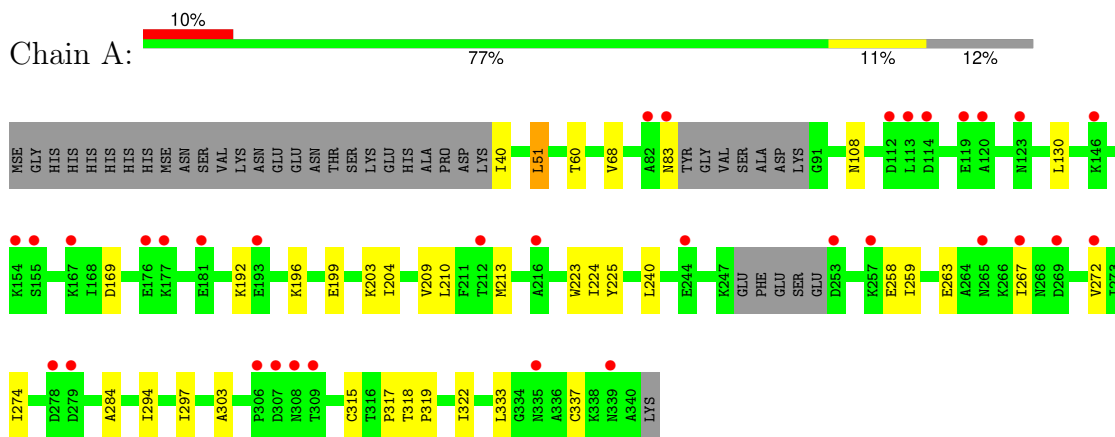
- Molecule 6 is water.

Mol	Chain	Residues	Atoms		ZeroOcc	AltConf
6	A	39	Total 39	O 39	0	0
6	B	40	Total 40	O 40	0	0

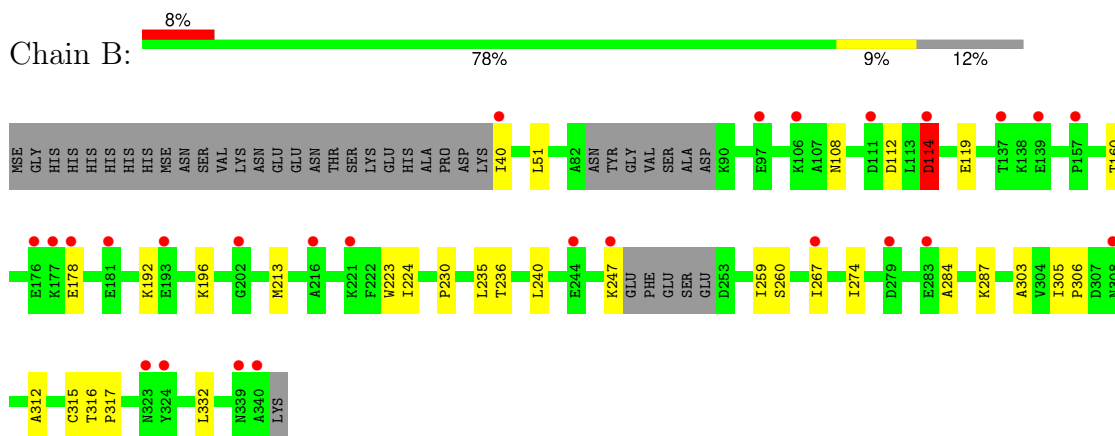
3 Residue-property plots [i](#)

These plots are drawn for all protein, RNA, DNA and oligosaccharide chains in the entry. The first graphic for a chain summarises the proportions of the various outlier classes displayed in the second graphic. The second graphic shows the sequence view annotated by issues in geometry and electron density. Residues are color-coded according to the number of geometric quality criteria for which they contain at least one outlier: green = 0, yellow = 1, orange = 2 and red = 3 or more. A red dot above a residue indicates a poor fit to the electron density ($RSRZ > 2$). Stretches of 2 or more consecutive residues without any outlier are shown as a green connector. Residues present in the sample, but not in the model, are shown in grey.

- Molecule 1: Iron-compound ABC transporter, iron compound-binding protein



- Molecule 1: Iron-compound ABC transporter, iron compound-binding protein



4 Data and refinement statistics

Property	Value	Source
Space group	P 21 21 21	Depositor
Cell constants a, b, c, α , β , γ	76.04Å 86.30Å 93.53Å 90.00° 90.00° 90.00°	Depositor
Resolution (Å)	41.12 – 2.70 41.12 – 2.70	Depositor EDS
% Data completeness (in resolution range)	97.8 (41.12-2.70) 97.9 (41.12-2.70)	Depositor EDS
R_{merge}	(Not available)	Depositor
R_{sym}	(Not available)	Depositor
$\langle I/\sigma(I) \rangle$ ¹	3.94 (at 2.69Å)	Xtriage
Refinement program	REFMAC 5.5.0066	Depositor
R, R_{free}	0.253 , 0.297 0.268 , 0.318	Depositor DCC
R_{free} test set	861 reflections (5.04%)	wwPDB-VP
Wilson B-factor (Å ²)	35.3	Xtriage
Anisotropy	0.345	Xtriage
Bulk solvent k_{sol} (e/Å ³), B_{sol} (Å ²)	0.37 , 43.5	EDS
L-test for twinning ²	$\langle L \rangle = 0.48$, $\langle L^2 \rangle = 0.31$	Xtriage
Estimated twinning fraction	No twinning to report.	Xtriage
F_o, F_c correlation	0.90	EDS
Total number of atoms	4593	wwPDB-VP
Average B, all atoms (Å ²)	27.0	wwPDB-VP

Xtriage's analysis on translational NCS is as follows: *The analyses of the Patterson function reveals a significant off-origin peak that is 49.07 % of the origin peak, indicating pseudo-translational symmetry. The chance of finding a peak of this or larger height randomly in a structure without pseudo-translational symmetry is equal to 7.8648e-05. The detected translational NCS is most likely also responsible for the elevated intensity ratio.*

¹Intensities estimated from amplitudes.

²Theoretical values of $\langle |L| \rangle$, $\langle L^2 \rangle$ for acentric reflections are 0.5, 0.333 respectively for untwinned datasets, and 0.375, 0.2 for perfectly twinned datasets.

5 Model quality

5.1 Standard geometry

Bond lengths and bond angles in the following residue types are not validated in this section: PG4, EDO, GOL, CD

The Z score for a bond length (or angle) is the number of standard deviations the observed value is removed from the expected value. A bond length (or angle) with $|Z| > 5$ is considered an outlier worth inspection. RMSZ is the root-mean-square of all Z scores of the bond lengths (or angles).

Mol	Chain	Bond lengths		Bond angles	
		RMSZ	$\# Z > 5$	RMSZ	$\# Z > 5$
1	A	0.58	2/2264 (0.1%)	0.52	1/3062 (0.0%)
1	B	0.54	2/2253 (0.1%)	0.54	2/3050 (0.1%)
All	All	0.56	4/4517 (0.1%)	0.53	3/6112 (0.0%)

All (4) bond length outliers are listed below:

Mol	Chain	Res	Type	Atoms	Z	Observed(Å)	Ideal(Å)
1	A	108	ASN	CG-OD1	-9.56	1.02	1.24
1	A	108	ASN	CG-ND2	-5.63	1.18	1.32
1	B	108	ASN	CB-CG	5.15	1.62	1.51
1	B	119	GLU	CG-CD	5.02	1.59	1.51

All (3) bond angle outliers are listed below:

Mol	Chain	Res	Type	Atoms	Z	Observed(°)	Ideal(°)
1	A	51	LEU	CA-CB-CG	9.34	136.77	115.30
1	B	112	ASP	CB-CG-OD1	7.67	125.20	118.30
1	B	114	ASP	CB-CG-OD1	5.42	123.18	118.30

There are no chirality outliers.

There are no planarity outliers.

5.2 Too-close contacts

In the following table, the Non-H and H(model) columns list the number of non-hydrogen atoms and hydrogen atoms in the chain respectively. The H(added) column lists the number of hydrogen atoms added and optimized by MolProbity. The Clashes column lists the number of clashes within the asymmetric unit, whereas Symm-Clashes lists symmetry-related clashes.

Mol	Chain	Non-H	H(model)	H(added)	Clashes	Symm-Clashes
1	A	2227	0	2257	35	0
1	B	2216	0	2231	26	0
2	A	15	0	0	0	0
2	B	16	0	0	0	0
3	A	13	0	18	1	0
3	B	13	0	18	10	0
4	A	6	0	8	0	0
5	A	8	0	12	0	0
6	A	39	0	0	0	0
6	B	40	0	0	0	0
All	All	4593	0	4544	61	0

The all-atom clashscore is defined as the number of clashes found per 1000 atoms (including hydrogen atoms). The all-atom clashscore for this structure is 7.

All (61) close contacts within the same asymmetric unit are listed below, sorted by their clash magnitude.

Atom-1	Atom-2	Interatomic distance (Å)	Clash overlap (Å)
1:A:210:LEU:CD1	1:A:267:ILE:HG23	1.65	1.25
1:A:210:LEU:HD12	1:A:267:ILE:HG23	1.13	1.09
1:A:210:LEU:HD12	1:A:267:ILE:CG2	1.98	0.93
1:A:210:LEU:HD13	1:A:267:ILE:HD12	1.57	0.87
1:A:224:ILE:CD1	1:A:267:ILE:HD11	2.08	0.84
1:A:210:LEU:CD1	1:A:267:ILE:HD12	2.10	0.79
1:A:224:ILE:CD1	1:A:267:ILE:CD1	2.64	0.76
1:B:224:ILE:HD11	1:B:267:ILE:HD13	1.69	0.75
1:A:192:LYS:O	1:A:196:LYS:HB2	1.88	0.73
1:A:224:ILE:HD12	1:A:267:ILE:HD11	1.73	0.70
1:B:284:ALA:CB	3:B:417:PG4:H12	2.28	0.64
1:B:114:ASP:OD1	1:B:114:ASP:N	2.30	0.63
1:A:210:LEU:CD1	1:A:267:ILE:CG2	2.60	0.61
1:A:213:MSE:HE3	1:A:225:TYR:OH	2.01	0.60
1:B:287:LYS:NZ	3:B:417:PG4:H72	2.17	0.59
1:A:224:ILE:HD11	1:A:267:ILE:HG13	1.85	0.58
1:B:284:ALA:HB1	3:B:417:PG4:H12	1.86	0.57
1:A:267:ILE:HG22	1:A:267:ILE:O	2.04	0.57
1:A:274:ILE:HG12	1:A:303:ALA:HB3	1.85	0.57
1:B:287:LYS:HE3	3:B:417:PG4:H11	1.87	0.56
1:B:40:ILE:HG22	1:B:51:LEU:HD12	1.89	0.53
1:A:274:ILE:HD11	1:A:333:LEU:HD21	1.90	0.52
1:B:287:LYS:CE	3:B:417:PG4:H11	2.39	0.52
1:A:284:ALA:HB1	3:A:416:PG4:H41	1.90	0.52

Continued on next page...

Continued from previous page...

Atom-1	Atom-2	Interatomic distance (Å)	Clash overlap (Å)
1:B:305:ILE:HD13	1:B:332:LEU:HD21	1.91	0.52
1:A:40:ILE:HG22	1:A:51:LEU:HD23	1.91	0.52
1:B:247:LYS:O	1:B:247:LYS:CG	2.58	0.51
1:A:315:CYS:O	1:A:317:PRO:HD3	2.10	0.51
1:A:224:ILE:HD13	1:A:267:ILE:CD1	2.40	0.51
1:B:315:CYS:O	1:B:317:PRO:HD3	2.11	0.51
1:B:160:THR:O	1:B:230:PRO:HG3	2.13	0.49
1:B:213:MSE:HE2	1:B:223:TRP:CD1	2.47	0.48
1:B:287:LYS:NZ	3:B:417:PG4:H11	2.29	0.47
1:B:259:ILE:HG12	1:B:260:SER:N	2.28	0.47
1:A:210:LEU:HD11	1:A:267:ILE:HD12	1.94	0.47
1:B:316:THR:HG23	1:B:316:THR:O	2.14	0.47
1:A:68:VAL:HG11	1:A:169:ASP:HB2	1.95	0.47
1:B:192:LYS:O	1:B:196:LYS:HB2	2.14	0.47
1:B:247:LYS:O	1:B:247:LYS:HG2	2.14	0.47
1:A:83:ASN:O	1:A:83:ASN:OD1	2.33	0.47
1:B:287:LYS:HZ1	3:B:417:PG4:H11	1.81	0.46
1:A:209:VAL:HG23	1:A:272:VAL:HG13	1.98	0.46
1:B:274:ILE:HG12	1:B:303:ALA:HB3	1.98	0.45
1:A:294:ILE:HD12	1:A:297:ILE:HD12	1.98	0.45
1:B:236:THR:HA	1:B:240:LEU:O	2.16	0.45
1:A:223:TRP:CZ2	1:A:258:GLU:HG3	2.53	0.44
1:A:318:THR:HB	1:A:319:PRO:HD2	2.00	0.44
1:B:235:LEU:O	1:B:240:LEU:HB2	2.19	0.43
1:A:204:ILE:HG22	1:A:337:CYS:SG	2.59	0.42
1:A:199:GLU:O	1:A:203:LYS:HG2	2.19	0.41
1:A:223:TRP:CE2	1:A:258:GLU:HG3	2.55	0.41
1:A:224:ILE:HD13	1:A:267:ILE:HD12	2.01	0.41
1:A:259:ILE:CG1	1:A:263:GLU:HB2	2.49	0.41
1:A:60:THR:HG22	1:A:130:LEU:HB2	2.03	0.41
1:A:209:VAL:HB	1:A:240:LEU:HD22	2.02	0.41
1:B:287:LYS:CE	3:B:417:PG4:H72	2.51	0.41
1:A:210:LEU:HD11	1:A:267:ILE:HG23	1.83	0.41
1:B:287:LYS:NZ	3:B:417:PG4:O3	2.54	0.41
1:A:317:PRO:HB2	1:A:322:ILE:HD11	2.03	0.40
1:B:306:PRO:O	1:B:312:ALA:HB2	2.21	0.40
1:B:287:LYS:HZ2	3:B:417:PG4:H72	1.86	0.40

There are no symmetry-related clashes.

5.3 Torsion angles

5.3.1 Protein backbone

In the following table, the Percentiles column shows the percent Ramachandran outliers of the chain as a percentile score with respect to all X-ray entries followed by that with respect to entries of similar resolution.

The Analysed column shows the number of residues for which the backbone conformation was analysed, and the total number of residues.

Mol	Chain	Analysed	Favoured	Allowed	Outliers	Percentiles	
1	A	283/328 (86%)	274 (97%)	9 (3%)	0	100	100
1	B	283/328 (86%)	269 (95%)	14 (5%)	0	100	100
All	All	566/656 (86%)	543 (96%)	23 (4%)	0	100	100

There are no Ramachandran outliers to report.

5.3.2 Protein sidechains

In the following table, the Percentiles column shows the percent sidechain outliers of the chain as a percentile score with respect to all X-ray entries followed by that with respect to entries of similar resolution.

The Analysed column shows the number of residues for which the sidechain conformation was analysed, and the total number of residues.

Mol	Chain	Analysed	Rotameric	Outliers	Percentiles	
1	A	240/272 (88%)	240 (100%)	0	100	100
1	B	237/272 (87%)	235 (99%)	2 (1%)	79	91
All	All	477/544 (88%)	475 (100%)	2 (0%)	89	96

All (2) residues with a non-rotameric sidechain are listed below:

Mol	Chain	Res	Type
1	B	114	ASP
1	B	178	GLU

Sometimes sidechains can be flipped to improve hydrogen bonding and reduce clashes. There are no such sidechains identified.

5.3.3 RNA ⓘ

There are no RNA molecules in this entry.

5.4 Non-standard residues in protein, DNA, RNA chains ⓘ

There are no non-standard protein/DNA/RNA residues in this entry.

5.5 Carbohydrates ⓘ

There are no oligosaccharides in this entry.

5.6 Ligand geometry ⓘ

Of 36 ligands modelled in this entry, 31 are monoatomic - leaving 5 for Mogul analysis.

In the following table, the Counts columns list the number of bonds (or angles) for which Mogul statistics could be retrieved, the number of bonds (or angles) that are observed in the model and the number of bonds (or angles) that are defined in the Chemical Component Dictionary. The Link column lists molecule types, if any, to which the group is linked. The Z score for a bond length (or angle) is the number of standard deviations the observed value is removed from the expected value. A bond length (or angle) with $|Z| > 2$ is considered an outlier worth inspection. RMSZ is the root-mean-square of all Z scores of the bond lengths (or angles).

Mol	Type	Chain	Res	Link	Bond lengths			Bond angles		
					Counts	RMSZ	$\# Z > 2$	Counts	RMSZ	$\# Z > 2$
5	EDO	A	419	-	3,3,3	0.41	0	2,2,2	0.52	0
3	PG4	A	416	-	12,12,12	0.37	0	11,11,11	0.86	0
5	EDO	A	418	-	3,3,3	0.44	0	2,2,2	0.39	0
3	PG4	B	417	-	12,12,12	0.35	0	11,11,11	0.71	0
4	GOL	A	417	-	5,5,5	0.22	0	5,5,5	0.30	0

In the following table, the Chirals column lists the number of chiral outliers, the number of chiral centers analysed, the number of these observed in the model and the number defined in the Chemical Component Dictionary. Similar counts are reported in the Torsion and Rings columns. '-' means no outliers of that kind were identified.

Mol	Type	Chain	Res	Link	Chirals	Torsions	Rings
5	EDO	A	419	-	-	0/1/1/1	-
3	PG4	A	416	-	-	6/10/10/10	-
5	EDO	A	418	-	-	1/1/1/1	-
3	PG4	B	417	-	-	5/10/10/10	-
4	GOL	A	417	-	-	0/4/4/4	-

There are no bond length outliers.

There are no bond angle outliers.

There are no chirality outliers.

All (12) torsion outliers are listed below:

Mol	Chain	Res	Type	Atoms
3	A	416	PG4	O4-C7-C8-O5
3	B	417	PG4	O4-C7-C8-O5
3	B	417	PG4	O1-C1-C2-O2
3	B	417	PG4	O2-C3-C4-O3
3	A	416	PG4	C3-C4-O3-C5
3	A	416	PG4	O2-C3-C4-O3
3	B	417	PG4	C5-C6-O4-C7
3	A	416	PG4	C1-C2-O2-C3
3	A	416	PG4	C5-C6-O4-C7
3	B	417	PG4	O3-C5-C6-O4
3	A	416	PG4	C6-C5-O3-C4
5	A	418	EDO	O1-C1-C2-O2

There are no ring outliers.

2 monomers are involved in 11 short contacts:

Mol	Chain	Res	Type	Clashes	Symm-Clashes
3	A	416	PG4	1	0
3	B	417	PG4	10	0

5.7 Other polymers [i](#)

There are no such residues in this entry.

5.8 Polymer linkage issues [i](#)

There are no chain breaks in this entry.

6 Fit of model and data

6.1 Protein, DNA and RNA chains

In the following table, the column labelled ‘#RSRZ> 2’ contains the number (and percentage) of RSRZ outliers, followed by percent RSRZ outliers for the chain as percentile scores relative to all X-ray entries and entries of similar resolution. The OWAB column contains the minimum, median, 95th percentile and maximum values of the occupancy-weighted average B-factor per residue. The column labelled ‘Q< 0.9’ lists the number of (and percentage) of residues with an average occupancy less than 0.9.

Mol	Chain	Analysed	<RSRZ>	#RSRZ>2		OWAB(Å ²)	Q<0.9
1	A	286/328 (87%)	0.84	33 (11%)	11 10	17, 26, 38, 47	2 (0%)
1	B	286/328 (87%)	0.84	26 (9%)	16 15	20, 28, 37, 45	2 (0%)
All	All	572/656 (87%)	0.84	59 (10%)	13 12	17, 27, 38, 47	4 (0%)

All (59) RSRZ outliers are listed below:

Mol	Chain	Res	Type	RSRZ
1	B	178	GLU	5.4
1	A	267	ILE	4.9
1	B	244	GLU	4.8
1	A	244	GLU	4.8
1	A	308	ASN	4.7
1	B	279	ASP	4.2
1	B	202	GLY	3.7
1	A	112	ASP	3.7
1	A	307	ASP	3.6
1	B	111	ASP	3.6
1	B	137	THR	3.5
1	A	265	ASN	3.5
1	B	176	GLU	3.5
1	B	181	GLU	3.5
1	A	154	LYS	3.4
1	A	279	ASP	3.4
1	A	176	GLU	3.1
1	A	181	GLU	3.1
1	A	216	ALA	3.0
1	A	269	ASP	2.9
1	A	83	ASN	2.9
1	A	335	ASN	2.9
1	B	40	ILE	2.8
1	B	106	LYS	2.8

Continued on next page...

Continued from previous page...

Mol	Chain	Res	Type	RSRZ
1	A	253	ASP	2.7
1	A	119	GLU	2.7
1	B	193	GLU	2.7
1	A	278	ASP	2.6
1	A	114	ASP	2.6
1	B	177	LYS	2.6
1	A	123	ASN	2.6
1	A	309	THR	2.5
1	B	247	LYS	2.5
1	A	177	LYS	2.4
1	A	212	THR	2.4
1	A	82	ALA	2.4
1	B	216	ALA	2.4
1	B	324	TYR	2.4
1	B	323	ASN	2.4
1	B	139	GLU	2.3
1	A	167	LYS	2.3
1	A	113	LEU	2.3
1	B	221	LYS	2.3
1	B	308	ASN	2.2
1	A	272	VAL	2.2
1	A	257	LYS	2.2
1	A	146	LYS	2.2
1	A	193	GLU	2.2
1	B	339	ASN	2.1
1	B	157	PRO	2.1
1	A	155	SER	2.1
1	A	339	ASN	2.1
1	B	267	ILE	2.1
1	A	306	PRO	2.1
1	B	97	GLU	2.1
1	B	283	GLU	2.1
1	B	340	ALA	2.1
1	B	114	ASP	2.0
1	A	120	ALA	2.0

6.2 Non-standard residues in protein, DNA, RNA chains ⓘ

There are no non-standard protein/DNA/RNA residues in this entry.

6.3 Carbohydrates [i](#)

There are no monosaccharides in this entry.

6.4 Ligands [i](#)

In the following table, the Atoms column lists the number of modelled atoms in the group and the number defined in the chemical component dictionary. The B-factors column lists the minimum, median, 95th percentile and maximum values of B factors of atoms in the group. The column labelled 'Q< 0.9' lists the number of atoms with occupancy less than 0.9.

Mol	Type	Chain	Res	Atoms	RSCC	RSR	B-factors(Å ²)	Q<0.9
2	CD	B	408	1/1	0.68	0.15	47,47,47,47	0
5	EDO	A	419	4/4	0.71	0.27	20,20,21,21	0
2	CD	A	414	1/1	0.77	0.09	45,45,45,45	0
5	EDO	A	418	4/4	0.78	0.33	38,38,39,40	0
3	PG4	A	416	13/13	0.81	0.16	37,40,40,40	0
4	GOL	A	417	6/6	0.82	0.15	24,24,25,25	0
3	PG4	B	417	13/13	0.84	0.14	35,35,38,38	0
2	CD	A	410	1/1	0.87	0.10	85,85,85,85	0
2	CD	A	405	1/1	0.87	0.08	42,42,42,42	0
2	CD	B	401	1/1	0.89	0.07	24,24,24,24	0
2	CD	B	415	1/1	0.91	0.08	84,84,84,84	0
2	CD	B	411	1/1	0.91	0.08	77,77,77,77	0
2	CD	B	413	1/1	0.91	0.07	97,97,97,97	0
2	CD	B	412	1/1	0.92	0.06	50,50,50,50	0
2	CD	A	406	1/1	0.92	0.11	68,68,68,68	0
2	CD	B	414	1/1	0.92	0.08	82,82,82,82	0
2	CD	B	410	1/1	0.93	0.08	83,83,83,83	0
2	CD	B	409	1/1	0.94	0.07	89,89,89,89	0
2	CD	A	415	1/1	0.94	0.07	92,92,92,92	0
2	CD	B	416	1/1	0.95	0.07	81,81,81,81	0
2	CD	B	405	1/1	0.96	0.05	75,75,75,75	0
2	CD	B	407	1/1	0.97	0.04	63,63,63,63	0
2	CD	A	401	1/1	0.97	0.05	71,71,71,71	0
2	CD	A	411	1/1	0.97	0.05	40,40,40,40	0
2	CD	B	402	1/1	0.97	0.04	48,48,48,48	0
2	CD	A	408	1/1	0.97	0.07	63,63,63,63	0
2	CD	B	403	1/1	0.98	0.07	46,46,46,46	0
2	CD	B	404	1/1	0.98	0.03	44,44,44,44	0
2	CD	A	402	1/1	0.98	0.03	19,19,19,19	0
2	CD	A	409	1/1	0.98	0.03	33,33,33,33	0
2	CD	A	412	1/1	0.98	0.04	61,61,61,61	0
2	CD	A	413	1/1	0.98	0.12	70,70,70,70	0

Continued on next page...

Continued from previous page...

Mol	Type	Chain	Res	Atoms	RSCC	RSR	B-factors(\AA^2)	Q<0.9
2	CD	A	404	1/1	0.99	0.01	37,37,37,37	0
2	CD	A	403	1/1	0.99	0.03	43,43,43,43	0
2	CD	B	406	1/1	0.99	0.03	33,33,33,33	0
2	CD	A	407	1/1	1.00	0.02	34,34,34,34	0

6.5 Other polymers [i](#)

There are no such residues in this entry.