



Full wwPDB EM Validation Report ⓘ

Oct 6, 2024 – 11:30 AM EDT

PDB ID : 8HOC
EMDB ID : EMD-34925
Title : Cryo-EM structure of ligand histamine-bound Histamine H4 receptor Gi complex
Authors : Tang, W.Q.; Sun, X.Y.; Li, F.H.; Wang, J.Y.
Deposited on : 2022-12-09
Resolution : 3.00 Å(reported)

This is a Full wwPDB EM Validation Report for a publicly released PDB entry.

We welcome your comments at validation@mail.wwpdb.org

A user guide is available at

<https://www.wwpdb.org/validation/2017/EMValidationReportHelp>
with specific help available everywhere you see the ⓘ symbol.

The types of validation reports are described at

<http://www.wwpdb.org/validation/2017/FAQs#types>.

The following versions of software and data (see [references ⓘ](#)) were used in the production of this report:

EMDB validation analysis : 0.0.1.dev113
Mogul : 2022.3.0, CSD as543be (2022)
MolProbity : 4.02b-467
buster-report : 1.1.7 (2018)
Percentile statistics : 20231227.v01 (using entries in the PDB archive December 27th 2023)
MapQ : 1.9.13
Ideal geometry (proteins) : Engh & Huber (2001)
Ideal geometry (DNA, RNA) : Parkinson et al. (1996)
Validation Pipeline (wwPDB-VP) : 2.39

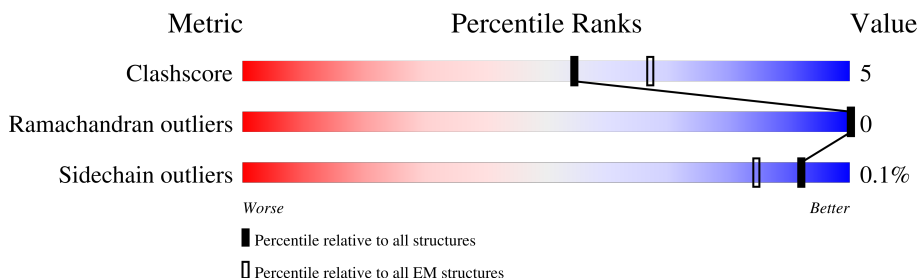
1 Overall quality at a glance

The following experimental techniques were used to determine the structure:

ELECTRON MICROSCOPY

The reported resolution of this entry is 3.00 Å.

Percentile scores (ranging between 0-100) for global validation metrics of the entry are shown in the following graphic. The table shows the number of entries on which the scores are based.



Metric	Whole archive (#Entries)	EM structures (#Entries)
Clashscore	210492	15764
Ramachandran outliers	207382	16835
Sidechain outliers	206894	16415

The table below summarises the geometric issues observed across the polymeric chains and their fit to the map. The red, orange, yellow and green segments of the bar indicate the fraction of residues that contain outliers for ≥ 3 , 2, 1 and 0 types of geometric quality criteria respectively. A grey segment represents the fraction of residues that are not modelled. The numeric value for each fraction is indicated below the corresponding segment, with a dot representing fractions $\leq 5\%$. The upper red bar (where present) indicates the fraction of residues that have poor fit to the EM map (all-atom inclusion $< 40\%$). The numeric value is given above the bar.

Mol	Chain	Length	Quality of chain
1	A	354	<div> <div>16%</div> <div>55%</div> <div>9%</div> <div>36%</div> </div>
2	B	340	<div> <div>10%</div> <div>85%</div> <div>14%</div> <div>.</div> </div>
3	G	71	<div> <div>38%</div> <div>68%</div> <div>13%</div> <div>20%</div> </div>
4	R	549	<div> <div>12%</div> <div>45%</div> <div>5%</div> <div>50%</div> </div>
5	S	297	<div> <div>12%</div> <div>66%</div> <div>12%</div> <div>22%</div> </div>

2 Entry composition

There are 6 unique types of molecules in this entry. The entry contains 8918 atoms, of which 0 are hydrogens and 0 are deuteriums.

In the tables below, the AltConf column contains the number of residues with at least one atom in alternate conformation and the Trace column contains the number of residues modelled with at most 2 atoms.

- Molecule 1 is a protein called Guanine nucleotide-binding protein G(i) subunit alpha-1.

Mol	Chain	Residues	Atoms					AltConf	Trace
1	A	225	Total	C	N	O	S	0	0
			1811	1150	300	347	14		

- Molecule 2 is a protein called Guanine nucleotide-binding protein G(I)/G(S)/G(T) subunit beta-1.

Mol	Chain	Residues	Atoms					AltConf	Trace
2	B	338	Total	C	N	O	S	0	0
			2601	1604	467	509	21		

- Molecule 3 is a protein called Guanine nucleotide-binding protein G(I)/G(S)/G(O) subunit gamma-2.

Mol	Chain	Residues	Atoms					AltConf	Trace
3	G	57	Total	C	N	O	S	0	0
			438	274	77	84	3		

- Molecule 4 is a protein called Soluble cytochrome b562, Histamine H4 receptor fusion.

Mol	Chain	Residues	Atoms					AltConf	Trace
4	R	276	Total	C	N	O	S	0	0
			2280	1545	355	369	11		

There are 91 discrepancies between the modelled and reference sequences:

Chain	Residue	Modelled	Actual	Comment	Reference
R	-158	MET	-	initiating methionine	UNP P0ABE7
R	-157	LYS	-	expression tag	UNP P0ABE7
R	-156	THR	-	expression tag	UNP P0ABE7
R	-155	ILE	-	expression tag	UNP P0ABE7
R	-154	ILE	-	expression tag	UNP P0ABE7
R	-153	ALA	-	expression tag	UNP P0ABE7
R	-152	LEU	-	expression tag	UNP P0ABE7

Continued on next page...

Continued from previous page...

Chain	Residue	Modelled	Actual	Comment	Reference
R	-151	SER	-	expression tag	UNP P0ABE7
R	-150	TYR	-	expression tag	UNP P0ABE7
R	-149	ILE	-	expression tag	UNP P0ABE7
R	-148	PHE	-	expression tag	UNP P0ABE7
R	-147	CYS	-	expression tag	UNP P0ABE7
R	-146	LEU	-	expression tag	UNP P0ABE7
R	-145	VAL	-	expression tag	UNP P0ABE7
R	-144	PHE	-	expression tag	UNP P0ABE7
R	-143	ALA	-	expression tag	UNP P0ABE7
R	-142	HIS	-	expression tag	UNP P0ABE7
R	-141	HIS	-	expression tag	UNP P0ABE7
R	-140	HIS	-	expression tag	UNP P0ABE7
R	-139	HIS	-	expression tag	UNP P0ABE7
R	-138	HIS	-	expression tag	UNP P0ABE7
R	-137	HIS	-	expression tag	UNP P0ABE7
R	-136	HIS	-	expression tag	UNP P0ABE7
R	-135	HIS	-	expression tag	UNP P0ABE7
R	-134	HIS	-	expression tag	UNP P0ABE7
R	-133	HIS	-	expression tag	UNP P0ABE7
R	-132	ASP	-	expression tag	UNP P0ABE7
R	-131	TYR	-	expression tag	UNP P0ABE7
R	-130	LYS	-	expression tag	UNP P0ABE7
R	-129	ASP	-	expression tag	UNP P0ABE7
R	-128	ASP	-	expression tag	UNP P0ABE7
R	-127	ASP	-	expression tag	UNP P0ABE7
R	-126	ASP	-	expression tag	UNP P0ABE7
R	-125	LYS	-	expression tag	UNP P0ABE7
R	-124	GLU	-	expression tag	UNP P0ABE7
R	-123	ASN	-	expression tag	UNP P0ABE7
R	-122	LEU	-	expression tag	UNP P0ABE7
R	-121	TYR	-	expression tag	UNP P0ABE7
R	-120	PHE	-	expression tag	UNP P0ABE7
R	-119	GLN	-	expression tag	UNP P0ABE7
R	-118	SER	-	expression tag	UNP P0ABE7
R	-117	GLY	-	expression tag	UNP P0ABE7
R	-116	ALA	-	expression tag	UNP P0ABE7
R	-115	PRO	-	expression tag	UNP P0ABE7
R	-108	TRP	MET	conflict	UNP P0ABE7
R	-13	ILE	HIS	conflict	UNP P0ABE7
R	-9	LEU	-	linker	UNP P0ABE7
R	-8	GLU	-	linker	UNP P0ABE7
R	-7	PHE	-	linker	UNP P0ABE7

Continued on next page...

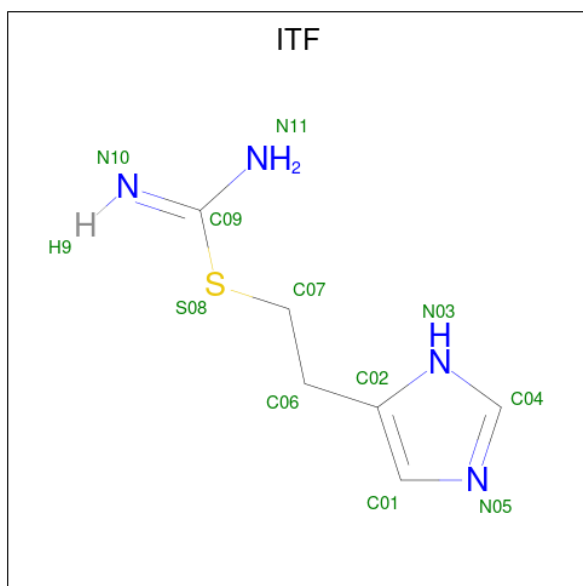
Continued from previous page...

Chain	Residue	Modelled	Actual	Comment	Reference
R	-6	LEU	-	linker	UNP P0ABE7
R	-5	GLU	-	linker	UNP P0ABE7
R	-4	VAL	-	linker	UNP P0ABE7
R	-3	LEU	-	linker	UNP P0ABE7
R	-2	PHE	-	linker	UNP P0ABE7
R	-1	GLN	-	linker	UNP P0ABE7
R	0	GLY	-	linker	UNP P0ABE7
R	1	PRO	-	linker	UNP P0ABE7
R	2	SER	-	linker	UNP P0ABE7
R	3	ALA	-	linker	UNP P0ABE7
R	16	ILE	VAL	conflict	UNP Q9H3N8
R	21	LEU	PHE	conflict	UNP Q9H3N8
R	25	LEU	VAL	conflict	UNP Q9H3N8
R	35	VAL	LEU	conflict	UNP Q9H3N8
R	51	ASN	SER	conflict	UNP Q9H3N8
R	114	GLN	LEU	conflict	UNP Q9H3N8
R	129	ILE	VAL	conflict	UNP Q9H3N8
R	184	LEU	VAL	conflict	UNP Q9H3N8
R	185	VAL	ILE	conflict	UNP Q9H3N8
R	196	TYR	ASN	conflict	UNP Q9H3N8
R	205	GLY	ASP	conflict	UNP Q9H3N8
R	206	ASN	HIS	conflict	UNP Q9H3N8
R	218	SER	ALA	conflict	UNP Q9H3N8
R	222	SER	ASN	conflict	UNP Q9H3N8
R	233	PHE	SER	conflict	UNP Q9H3N8
R	236	THR	ARG	conflict	UNP Q9H3N8
R	239	PRO	SER	conflict	UNP Q9H3N8
R	242	LYS	THR	conflict	UNP Q9H3N8
R	245	ALA	PRO	conflict	UNP Q9H3N8
R	260	LEU	MET	conflict	UNP Q9H3N8
R	263	LEU	SER	conflict	UNP Q9H3N8
R	266	GLN	LYS	conflict	UNP Q9H3N8
R	271	ILE	THR	conflict	UNP Q9H3N8
R	279	LEU	PHE	conflict	UNP Q9H3N8
R	285	LEU	VAL	conflict	UNP Q9H3N8
R	293	LEU	VAL	conflict	UNP Q9H3N8
R	300	LYS	ARG	conflict	UNP Q9H3N8
R	330	PRO	SER	conflict	UNP Q9H3N8
R	334	ARG	GLY	conflict	UNP Q9H3N8
R	356	PHE	LEU	conflict	UNP Q9H3N8
R	380	ILE	LEU	conflict	UNP Q9H3N8
R	385	ASN	SER	conflict	UNP Q9H3N8

- Molecule 5 is a protein called Single-chain variable fragment scFv16.

Mol	Chain	Residues	Atoms					AltConf	Trace
			Total	C	N	O	S		
5	S	231	1777	1128	294	345	10	0	0

- Molecule 6 is 2-(1 {H}-imidazol-5-yl)ethyl carbamimidothioate (three-letter code: ITF) (formula: C₆H₁₀N₄S) (labeled as "Ligand of Interest" by depositor).



Mol	Chain	Residues	Atoms				AltConf
			Total	C	N	S	
6	R	1	11	6	4	1	0

4 Experimental information

Property	Value	Source
EM reconstruction method	SINGLE PARTICLE	Depositor
Imposed symmetry	POINT, Not provided	
Number of particles used	642397	Depositor
Resolution determination method	FSC 0.143 CUT-OFF	Depositor
CTF correction method	PHASE FLIPPING AND AMPLITUDE CORRECTION	Depositor
Microscope	FEI TALOS ARCTICA	Depositor
Voltage (kV)	200	Depositor
Electron dose ($e^-/\text{\AA}^2$)	60	Depositor
Minimum defocus (nm)	1200	Depositor
Maximum defocus (nm)	2000	Depositor
Magnification	Not provided	
Image detector	GATAN K2 SUMMIT (4k x 4k)	Depositor
Maximum map value	4.821	Depositor
Minimum map value	-3.414	Depositor
Average map value	-0.004	Depositor
Map value standard deviation	0.105	Depositor
Recommended contour level	0.85	Depositor
Map size (Å)	266.24, 266.24, 266.24	wwPDB
Map dimensions	256, 256, 256	wwPDB
Map angles (°)	90.0, 90.0, 90.0	wwPDB
Pixel spacing (Å)	1.04, 1.04, 1.04	Depositor

5 Model quality [i](#)

5.1 Standard geometry [i](#)

Bond lengths and bond angles in the following residue types are not validated in this section: ITF

The Z score for a bond length (or angle) is the number of standard deviations the observed value is removed from the expected value. A bond length (or angle) with $|Z| > 5$ is considered an outlier worth inspection. RMSZ is the root-mean-square of all Z scores of the bond lengths (or angles).

Mol	Chain	Bond lengths		Bond angles	
		RMSZ	# $ Z > 5$	RMSZ	# $ Z > 5$
1	A	0.25	0/1841	0.45	0/2470
2	B	0.24	0/2648	0.52	0/3589
3	G	0.24	0/444	0.42	0/599
4	R	0.25	0/2356	0.43	0/3213
5	S	0.25	0/1821	0.50	0/2469
All	All	0.25	0/9110	0.47	0/12340

There are no bond length outliers.

There are no bond angle outliers.

There are no chirality outliers.

There are no planarity outliers.

5.2 Too-close contacts [i](#)

In the following table, the Non-H and H(model) columns list the number of non-hydrogen atoms and hydrogen atoms in the chain respectively. The H(added) column lists the number of hydrogen atoms added and optimized by MolProbity. The Clashes column lists the number of clashes within the asymmetric unit, whereas Symm-Clashes lists symmetry-related clashes.

Mol	Chain	Non-H	H(model)	H(added)	Clashes	Symm-Clashes
1	A	1811	0	1797	18	0
2	B	2601	0	2505	27	0
3	G	438	0	447	6	0
4	R	2280	0	2306	16	0
5	S	1777	0	1712	21	0
6	R	11	0	0	0	0
All	All	8918	0	8767	86	0

The all-atom clashscore is defined as the number of clashes found per 1000 atoms (including

hydrogen atoms). The all-atom clashscore for this structure is 5.

All (86) close contacts within the same asymmetric unit are listed below, sorted by their clash magnitude.

Atom-1	Atom-2	Interatomic distance (Å)	Clash overlap (Å)
2:B:201:SER:HG	2:B:211:TRP:HE1	1.22	0.84
5:S:94:TYR:O	5:S:114:GLY:HA2	1.89	0.72
3:G:59:ASN:HD21	3:G:62:ARG:HH21	1.39	0.70
5:S:130:GLN:NE2	5:S:217:CYS:SG	2.69	0.66
5:S:40:ALA:HB3	5:S:43:LYS:HB2	1.78	0.65
2:B:146:LEU:HD11	2:B:159:THR:HB	1.79	0.63
2:B:271:CYS:HB2	2:B:290:ASP:HB2	1.81	0.63
5:S:39:GLN:HB2	5:S:45:LEU:HD23	1.80	0.63
1:A:232:LEU:O	1:A:241:ASN:ND2	2.33	0.62
4:R:49:ARG:NH2	4:R:122:TYR:O	2.33	0.62
1:A:40:GLY:HA3	1:A:46:LYS:HD2	1.80	0.62
1:A:254:CYS:O	1:A:317:LYS:NZ	2.34	0.60
2:B:22:ARG:O	2:B:259:GLN:NE2	2.36	0.58
4:R:334:ARG:NH1	4:R:335:PRO:O	2.36	0.58
4:R:169:PHE:HA	4:R:175:LEU:HD11	1.86	0.58
2:B:81:ILE:HB	2:B:91:HIS:HB2	1.88	0.56
1:A:45:GLY:HA3	1:A:269:ASN:HD21	1.71	0.55
4:R:165:GLU:OE2	4:R:336:LYS:NZ	2.39	0.55
5:S:190:ARG:NH2	5:S:211:ASP:OD2	2.39	0.55
5:S:67:ARG:HG3	5:S:68:PHE:HD1	1.72	0.55
5:S:76:LYS:HG3	5:S:77:ASN:H	1.72	0.54
1:A:272:ASP:O	1:A:275:GLU:N	2.40	0.54
1:A:314:LYS:O	4:R:297:ARG:NH2	2.41	0.54
2:B:157:ILE:HG22	2:B:169:TRP:HB2	1.90	0.54
4:R:146:VAL:HG13	4:R:181:LEU:HD23	1.89	0.54
1:A:325:CYS:SG	1:A:326:ALA:N	2.83	0.52
5:S:160:THR:O	5:S:179:ARG:HG2	2.09	0.52
2:B:279:SER:HB2	3:G:50:LEU:HD12	1.91	0.51
2:B:96:ARG:NH1	2:B:138:GLU:OE2	2.43	0.51
2:B:160:SER:HB3	2:B:190:LEU:HD23	1.92	0.50
1:A:48:THR:O	1:A:52:GLN:HG3	2.11	0.50
2:B:155:ASN:ND2	2:B:170:ASP:OD1	2.45	0.49
2:B:249:THR:HG22	2:B:265:SER:HB3	1.94	0.49
1:A:43:GLU:HA	1:A:46:LYS:HD3	1.95	0.49
4:R:42:VAL:HG11	4:R:372:ILE:HD11	1.94	0.49
2:B:180:PHE:HE1	2:B:216:GLY:HA2	1.79	0.48
2:B:67:SER:HB2	2:B:321:THR:HB	1.96	0.47
4:R:33:ASN:O	4:R:37:ILE:HG12	2.14	0.47

Continued on next page...

Continued from previous page...

Atom-1	Atom-2	Interatomic distance (Å)	Clash overlap (Å)
1:A:53:MET:HG2	1:A:332:VAL:HG22	1.96	0.47
5:S:2:VAL:N	5:S:25:SER:O	2.48	0.46
4:R:33:ASN:OD1	4:R:61:ASP:HB2	2.15	0.46
4:R:169:PHE:HD1	4:R:175:LEU:HD21	1.81	0.46
2:B:86:THR:HG22	2:B:87:THR:H	1.80	0.46
5:S:94:TYR:O	5:S:114:GLY:CA	2.63	0.46
4:R:322:PHE:HA	4:R:325:VAL:HG12	1.97	0.46
3:G:39:ALA:O	3:G:43:ALA:HB2	2.16	0.46
1:A:304:GLN:HG3	1:A:321:THR:HG21	1.99	0.45
1:A:34:VAL:HG13	1:A:219:THR:HG21	1.99	0.45
1:A:234:LEU:HD13	1:A:245:GLU:HG3	1.99	0.45
2:B:86:THR:HG22	2:B:87:THR:N	2.32	0.45
2:B:124:TYR:CE2	2:B:135:VAL:HG22	2.52	0.44
5:S:67:ARG:HG3	5:S:68:PHE:CD1	2.51	0.44
5:S:141:GLU:O	5:S:207:LEU:HD23	2.18	0.44
2:B:286:LEU:HD22	2:B:327:VAL:HG11	2.00	0.44
5:S:13:GLN:OE1	5:S:14:PRO:HD2	2.18	0.44
5:S:52:SER:O	5:S:72:ARG:NH1	2.51	0.44
4:R:96:LEU:HD13	4:R:144:PHE:HB2	2.00	0.43
3:G:39:ALA:O	3:G:43:ALA:CB	2.66	0.43
4:R:38:LEU:HA	4:R:41:VAL:HG22	2.00	0.43
1:A:234:LEU:HD23	1:A:235:ALA:O	2.19	0.43
2:B:79:LEU:HB2	2:B:95:LEU:HD21	2.01	0.43
4:R:26:ALA:O	4:R:30:MET:HG2	2.19	0.43
5:S:12:VAL:HG22	5:S:18:ARG:HH21	1.82	0.43
5:S:38:ARG:HB2	5:S:48:VAL:CG2	2.49	0.43
1:A:207:GLU:HB3	1:A:210:LYS:HG2	2.01	0.42
2:B:323:ASP:OD1	2:B:323:ASP:N	2.45	0.42
2:B:64:GLY:HA2	2:B:105:TYR:CD2	2.54	0.42
4:R:98:CYS:HB3	4:R:316:TRP:HH2	1.85	0.42
2:B:90:VAL:HG12	2:B:91:HIS:ND1	2.35	0.42
2:B:253:PHE:CE1	2:B:260:GLU:HB3	2.55	0.42
3:G:18:GLN:HA	3:G:21:MET:HG2	2.01	0.42
4:R:142:LEU:O	4:R:146:VAL:HG23	2.19	0.42
1:A:38:LEU:HD21	1:A:46:LYS:HG2	2.01	0.42
5:S:34:MET:HE2	5:S:79:LEU:HD22	2.01	0.41
2:B:227:SER:OG	2:B:228:ASP:N	2.52	0.41
2:B:3:GLU:HG3	2:B:6:GLN:H	1.86	0.41
1:A:194:LEU:HD12	1:A:194:LEU:HA	1.89	0.41
5:S:12:VAL:HG11	5:S:86:LEU:HD12	2.01	0.41
1:A:221:ILE:HB	1:A:264:ILE:HD13	2.03	0.41

Continued on next page...

Continued from previous page...

Atom-1	Atom-2	Interatomic distance (Å)	Clash overlap (Å)
2:B:34:THR:O	2:B:301:LYS:NZ	2.43	0.41
5:S:91:THR:HA	5:S:117:LEU:O	2.21	0.41
5:S:100:ILE:HG23	5:S:105:SER:HB2	2.02	0.41
2:B:235:PHE:CG	2:B:236:PRO:HD2	2.55	0.41
5:S:52:SER:OG	5:S:53:SER:N	2.54	0.41
2:B:15:LYS:HE2	2:B:15:LYS:HB3	1.79	0.40
3:G:9:ILE:HG22	3:G:13:ARG:HH21	1.86	0.40

There are no symmetry-related clashes.

5.3 Torsion angles [i](#)

5.3.1 Protein backbone [i](#)

In the following table, the Percentiles column shows the percent Ramachandran outliers of the chain as a percentile score with respect to all PDB entries followed by that with respect to all EM entries.

The Analysed column shows the number of residues for which the backbone conformation was analysed, and the total number of residues.

Mol	Chain	Analysed	Favoured	Allowed	Outliers	Percentiles	
1	A	221/354 (62%)	216 (98%)	5 (2%)	0	100	100
2	B	336/340 (99%)	328 (98%)	8 (2%)	0	100	100
3	G	55/71 (78%)	54 (98%)	1 (2%)	0	100	100
4	R	272/549 (50%)	262 (96%)	10 (4%)	0	100	100
5	S	227/297 (76%)	222 (98%)	5 (2%)	0	100	100
All	All	1111/1611 (69%)	1082 (97%)	29 (3%)	0	100	100

There are no Ramachandran outliers to report.

5.3.2 Protein sidechains [i](#)

In the following table, the Percentiles column shows the percent sidechain outliers of the chain as a percentile score with respect to all PDB entries followed by that with respect to all EM entries.

The Analysed column shows the number of residues for which the sidechain conformation was analysed, and the total number of residues.

Mol	Chain	Analysed	Rotameric	Outliers	Percentiles	
1	A	200/305 (66%)	200 (100%)	0	100	100
2	B	281/283 (99%)	281 (100%)	0	100	100
3	G	46/58 (79%)	46 (100%)	0	100	100
4	R	247/485 (51%)	246 (100%)	1 (0%)	89	95
5	S	196/239 (82%)	196 (100%)	0	100	100
All	All	970/1370 (71%)	969 (100%)	1 (0%)	92	98

All (1) residues with a non-rotameric sidechain are listed below:

Mol	Chain	Res	Type
4	R	203	LYS

Sometimes sidechains can be flipped to improve hydrogen bonding and reduce clashes. There are no such sidechains identified.

5.3.3 RNA ⓘ

There are no RNA molecules in this entry.

5.4 Non-standard residues in protein, DNA, RNA chains ⓘ

There are no non-standard protein/DNA/RNA residues in this entry.

5.5 Carbohydrates ⓘ

There are no oligosaccharides in this entry.

5.6 Ligand geometry ⓘ

1 ligand is modelled in this entry.

In the following table, the Counts columns list the number of bonds (or angles) for which Mogul statistics could be retrieved, the number of bonds (or angles) that are observed in the model and the number of bonds (or angles) that are defined in the Chemical Component Dictionary. The Link column lists molecule types, if any, to which the group is linked. The Z score for a bond length (or angle) is the number of standard deviations the observed value is removed from the expected value. A bond length (or angle) with $|Z| > 2$ is considered an outlier worth inspection. RMSZ is the root-mean-square of all Z scores of the bond lengths (or angles).

Mol	Type	Chain	Res	Link	Bond lengths			Bond angles		
					Counts	RMSZ	# Z > 2	Counts	RMSZ	# Z > 2
6	ITF	R	401	-	6,11,11	3.46	2 (33%)	6,13,13	1.44	1 (16%)

In the following table, the Chirals column lists the number of chiral outliers, the number of chiral centers analysed, the number of these observed in the model and the number defined in the Chemical Component Dictionary. Similar counts are reported in the Torsion and Rings columns. '-' means no outliers of that kind were identified.

Mol	Type	Chain	Res	Link	Chirals	Torsions	Rings
6	ITF	R	401	-	-	2/5/6/6	0/1/1/1

All (2) bond length outliers are listed below:

Mol	Chain	Res	Type	Atoms	Z	Observed(Å)	Ideal(Å)
6	R	401	ITF	C09-S08	6.20	1.82	1.75
6	R	401	ITF	C09-N11	5.58	1.45	1.34

All (1) bond angle outliers are listed below:

Mol	Chain	Res	Type	Atoms	Z	Observed(°)	Ideal(°)
6	R	401	ITF	C07-S08-C09	2.91	109.86	102.62

There are no chirality outliers.

All (2) torsion outliers are listed below:

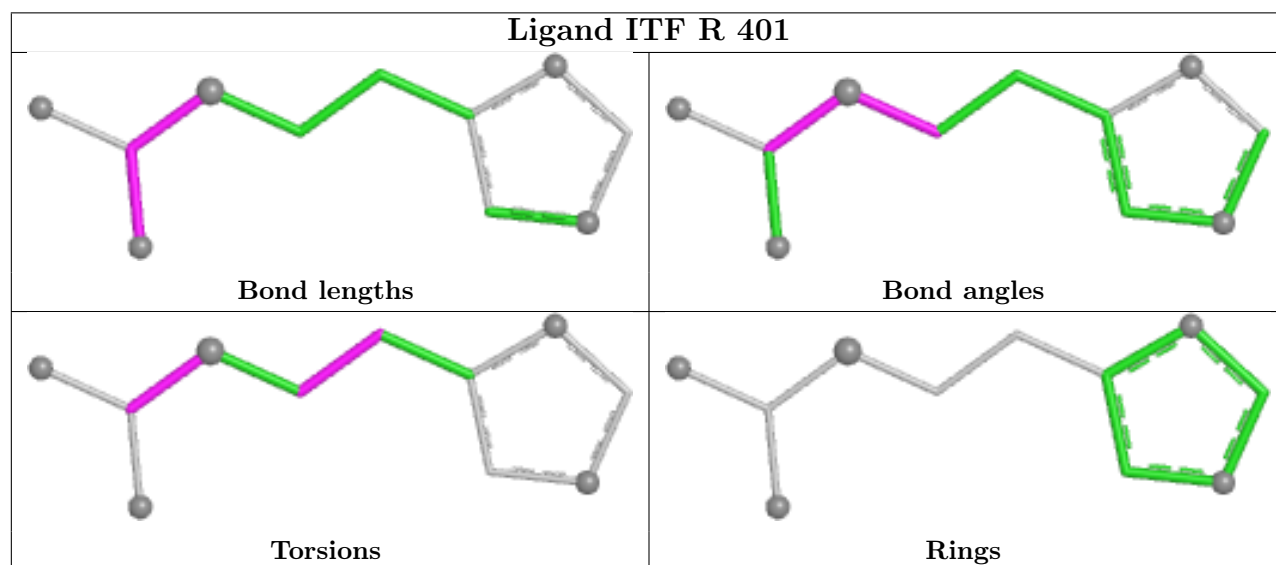
Mol	Chain	Res	Type	Atoms
6	R	401	ITF	C02-C06-C07-S08
6	R	401	ITF	N11-C09-S08-C07

There are no ring outliers.

No monomer is involved in short contacts.

The following is a two-dimensional graphical depiction of Mogul quality analysis of bond lengths, bond angles, torsion angles, and ring geometry for all instances of the Ligand of Interest. In addition, ligands with molecular weight > 250 and outliers as shown on the validation Tables will also be included. For torsion angles, if less than 5% of the Mogul distribution of torsion angles is within 10 degrees of the torsion angle in question, then that torsion angle is considered an outlier. Any bond that is central to one or more torsion angles identified as an outlier by Mogul will be highlighted in the graph. For rings, the root-mean-square deviation (RMSD) between the ring in question and similar rings identified by Mogul is calculated over all ring torsion angles. If the average RMSD is greater than 60 degrees and the minimal RMSD between the ring in question and any Mogul-identified rings is also greater than 60 degrees, then that ring is considered an outlier.

The outliers are highlighted in purple. The color gray indicates Mogul did not find sufficient equivalents in the CSD to analyse the geometry.



5.7 Other polymers [i](#)

There are no such residues in this entry.

5.8 Polymer linkage issues [i](#)

There are no chain breaks in this entry.

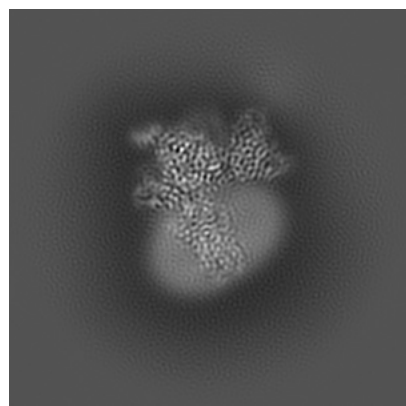
6 Map visualisation [i](#)

This section contains visualisations of the EMDB entry EMD-34925. These allow visual inspection of the internal detail of the map and identification of artifacts.

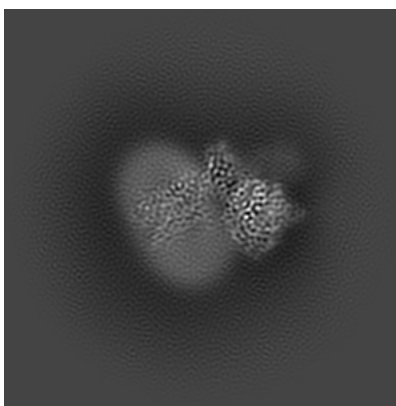
Images derived from a raw map, generated by summing the deposited half-maps, are presented below the corresponding image components of the primary map to allow further visual inspection and comparison with those of the primary map.

6.1 Orthogonal projections [i](#)

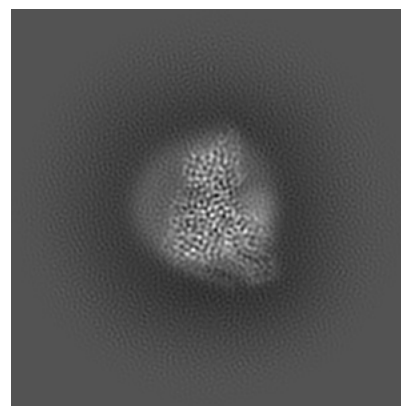
6.1.1 Primary map



X

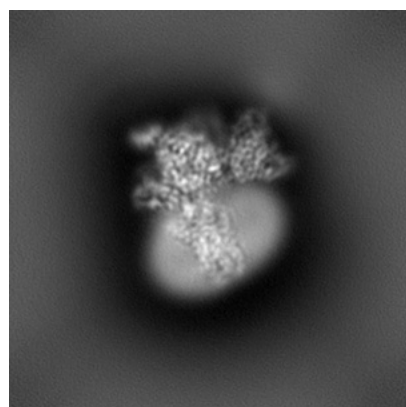


Y

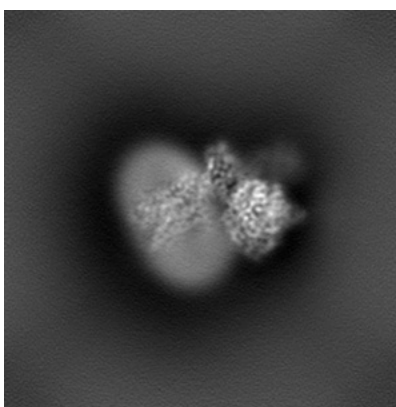


Z

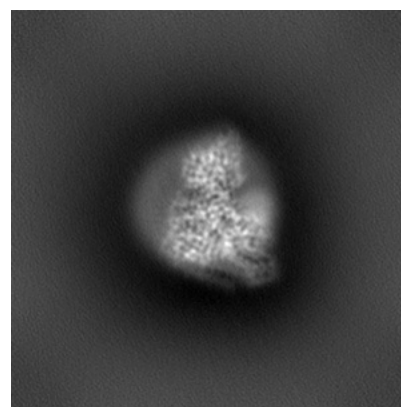
6.1.2 Raw map



X



Y

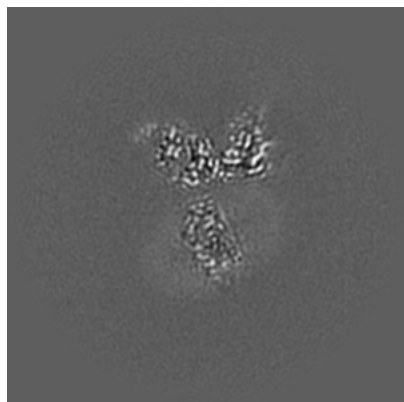


Z

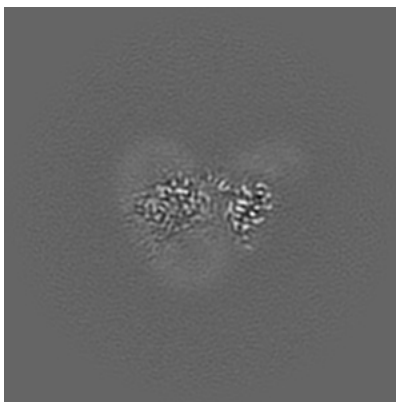
The images above show the map projected in three orthogonal directions.

6.2 Central slices [i](#)

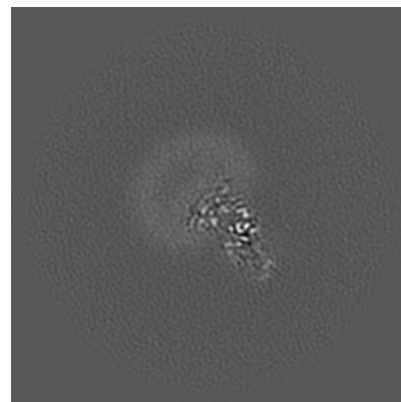
6.2.1 Primary map



X Index: 128

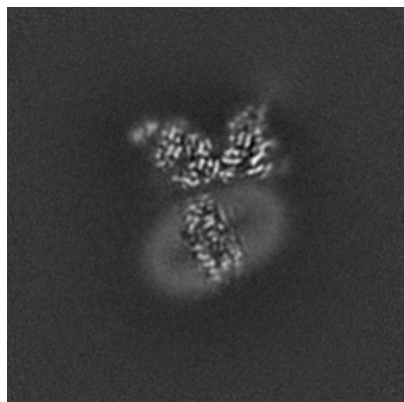


Y Index: 128

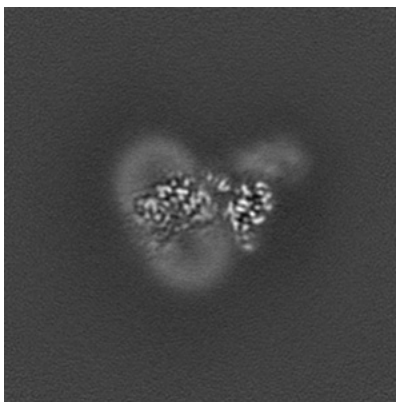


Z Index: 128

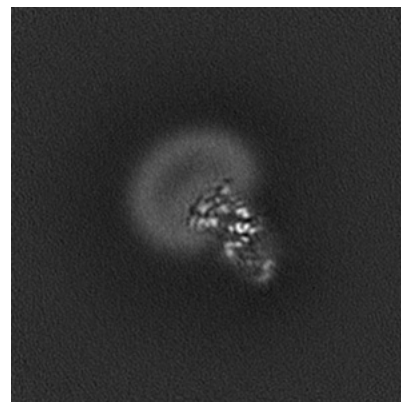
6.2.2 Raw map



X Index: 128



Y Index: 128

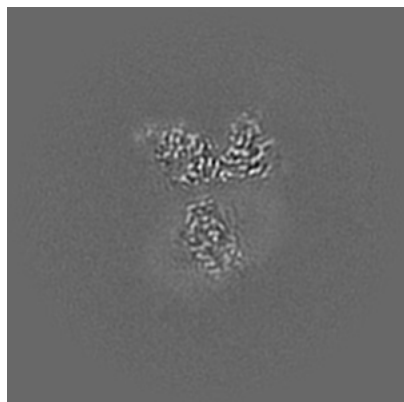


Z Index: 128

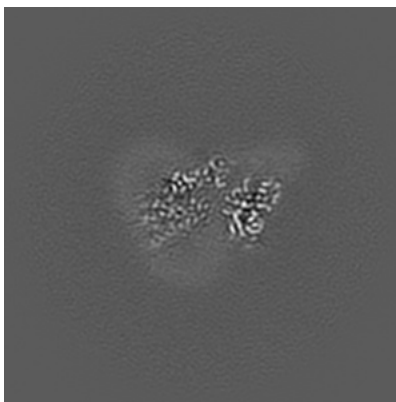
The images above show central slices of the map in three orthogonal directions.

6.3 Largest variance slices [i](#)

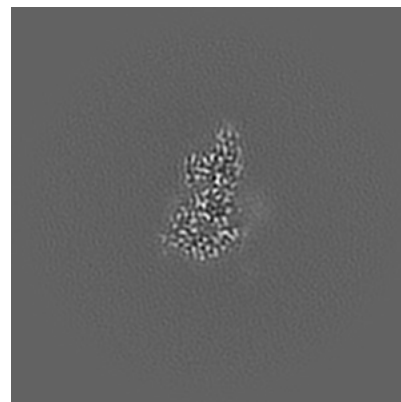
6.3.1 Primary map



X Index: 129

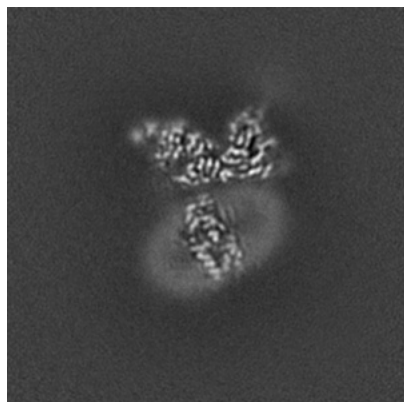


Y Index: 123

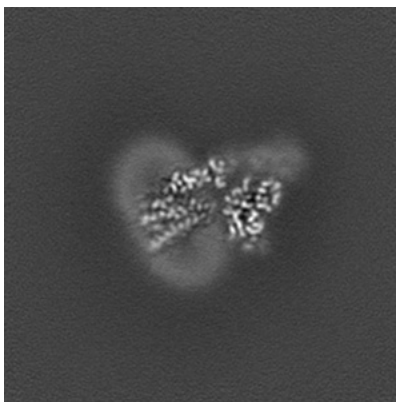


Z Index: 159

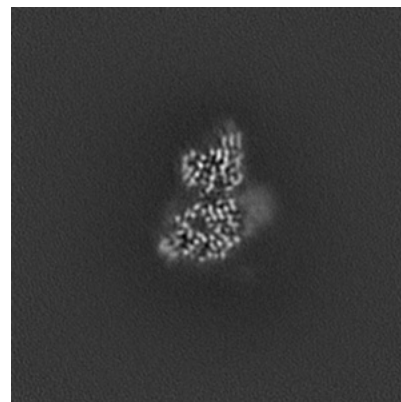
6.3.2 Raw map



X Index: 129



Y Index: 123

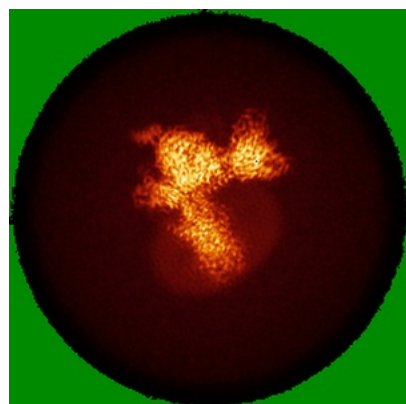


Z Index: 162

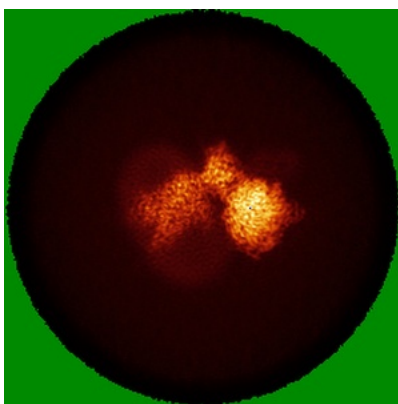
The images above show the largest variance slices of the map in three orthogonal directions.

6.4 Orthogonal standard-deviation projections (False-color) [i](#)

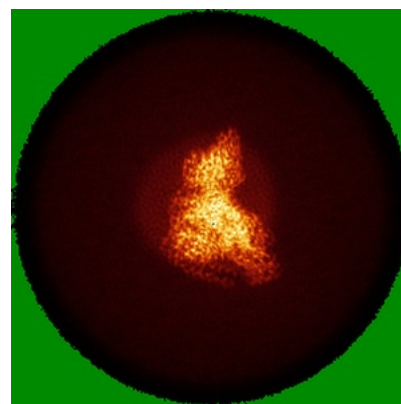
6.4.1 Primary map



X

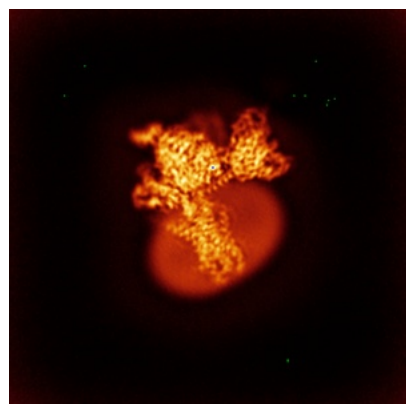


Y

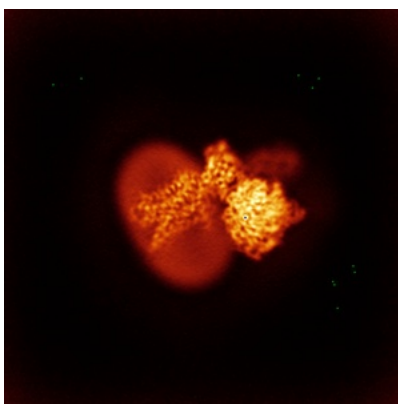


Z

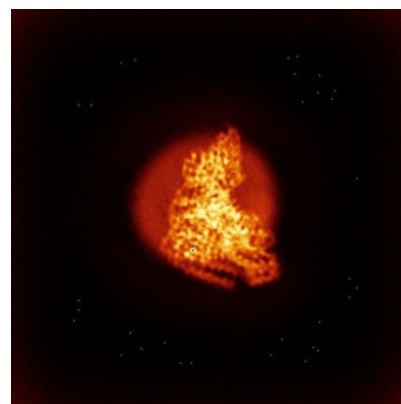
6.4.2 Raw map



X



Y

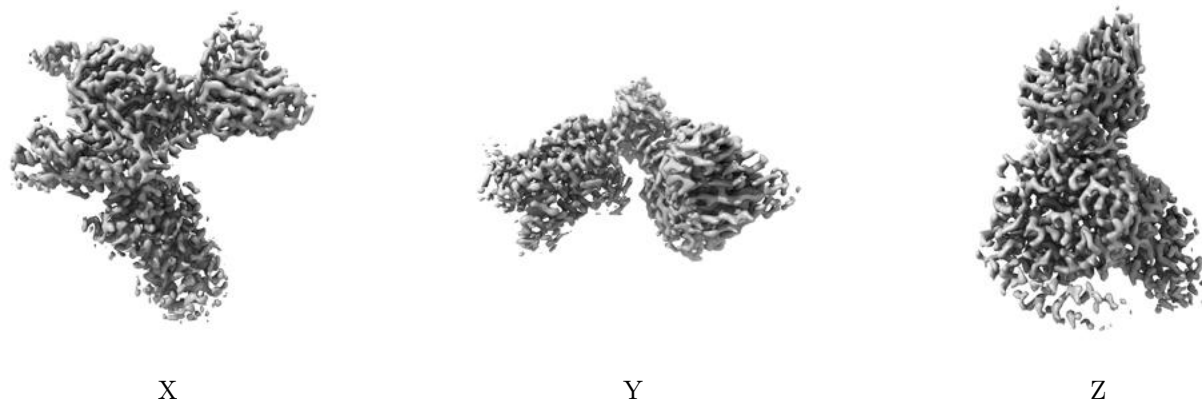


Z

The images above show the map standard deviation projections with false color in three orthogonal directions. Minimum values are shown in green, max in blue, and dark to light orange shades represent small to large values respectively.

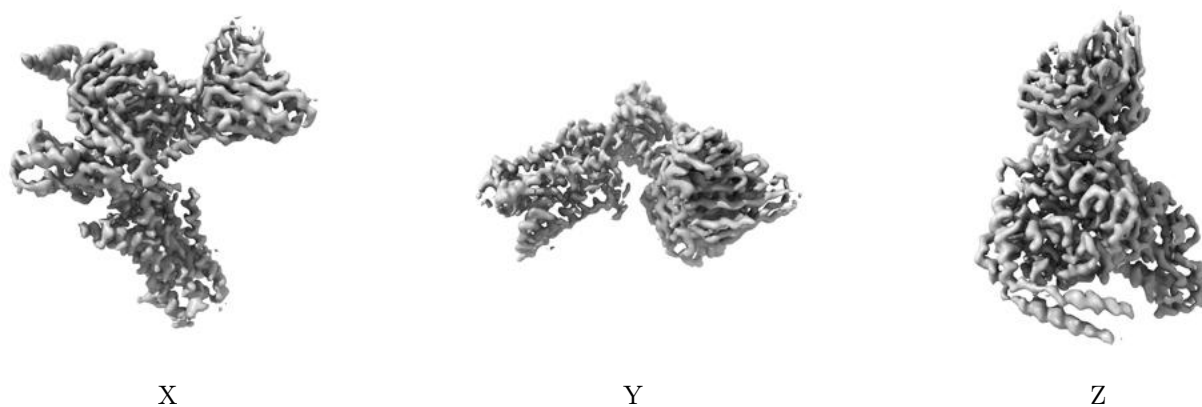
6.5 Orthogonal surface views [i](#)

6.5.1 Primary map



The images above show the 3D surface view of the map at the recommended contour level 0.85. These images, in conjunction with the slice images, may facilitate assessment of whether an appropriate contour level has been provided.

6.5.2 Raw map



These images show the 3D surface of the raw map. The raw map's contour level was selected so that its surface encloses the same volume as the primary map does at its recommended contour level.

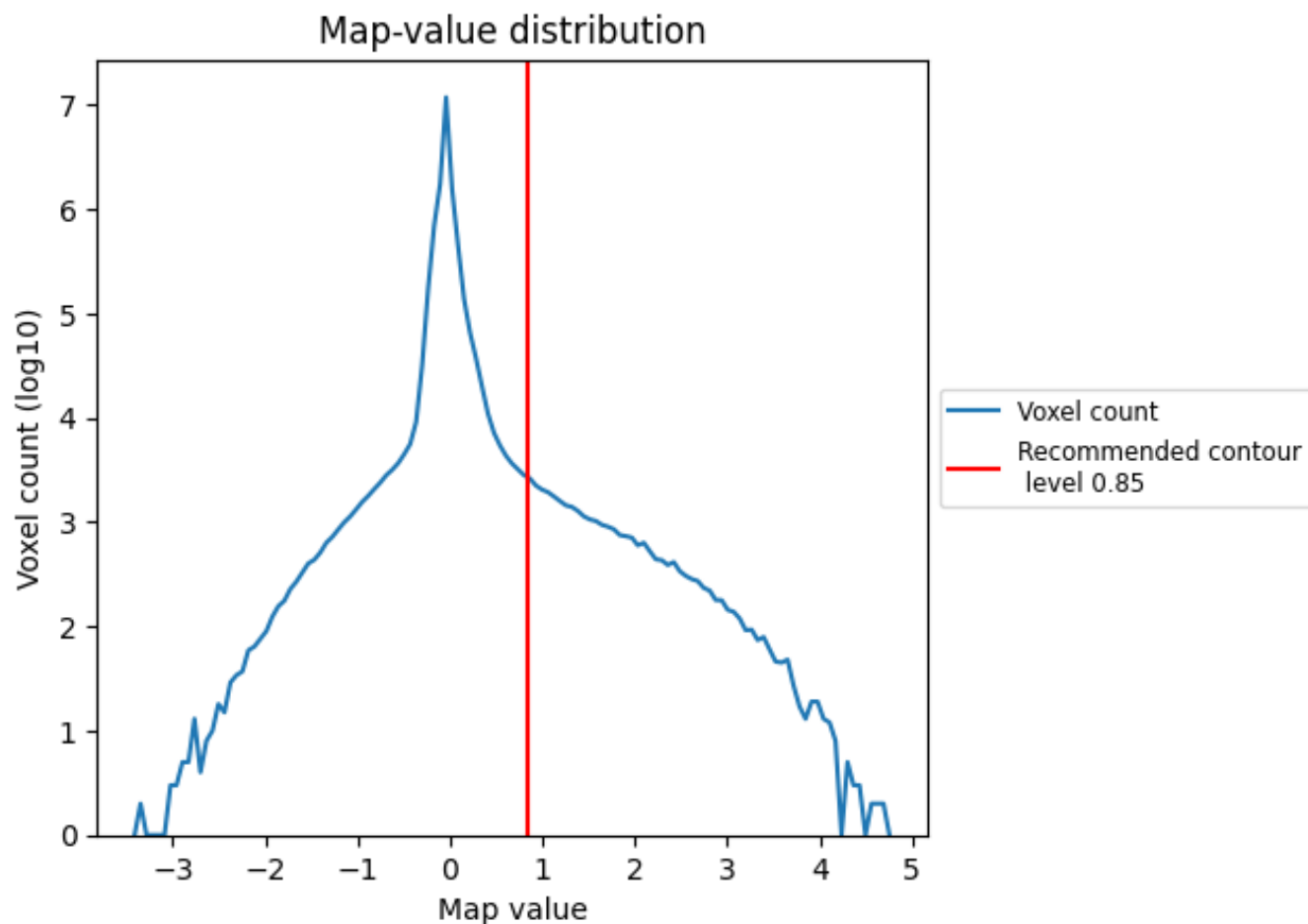
6.6 Mask visualisation [i](#)

This section was not generated. No masks/segmentation were deposited.

7 Map analysis [i](#)

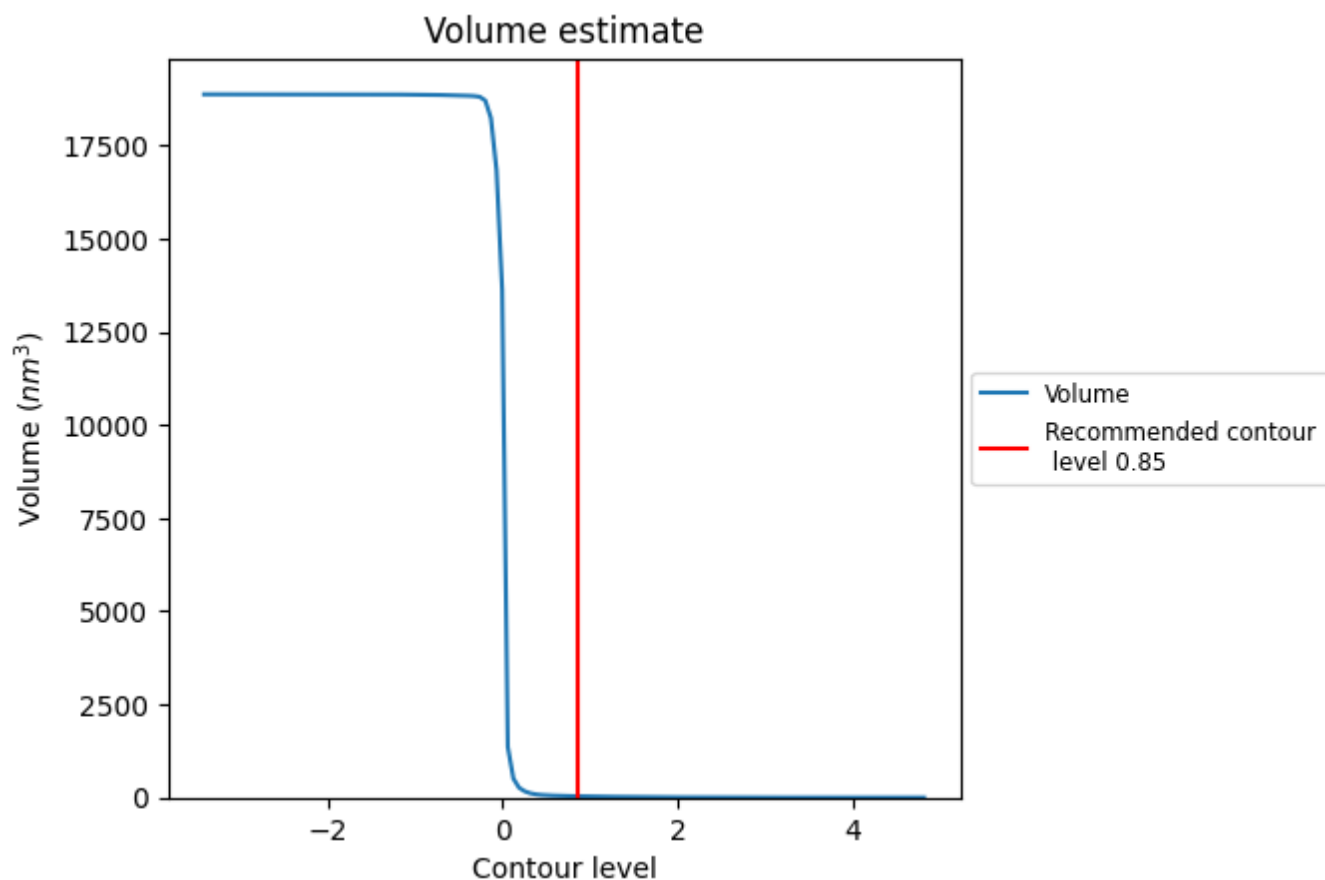
This section contains the results of statistical analysis of the map.

7.1 Map-value distribution [i](#)



The map-value distribution is plotted in 128 intervals along the x-axis. The y-axis is logarithmic. A spike in this graph at zero usually indicates that the volume has been masked.

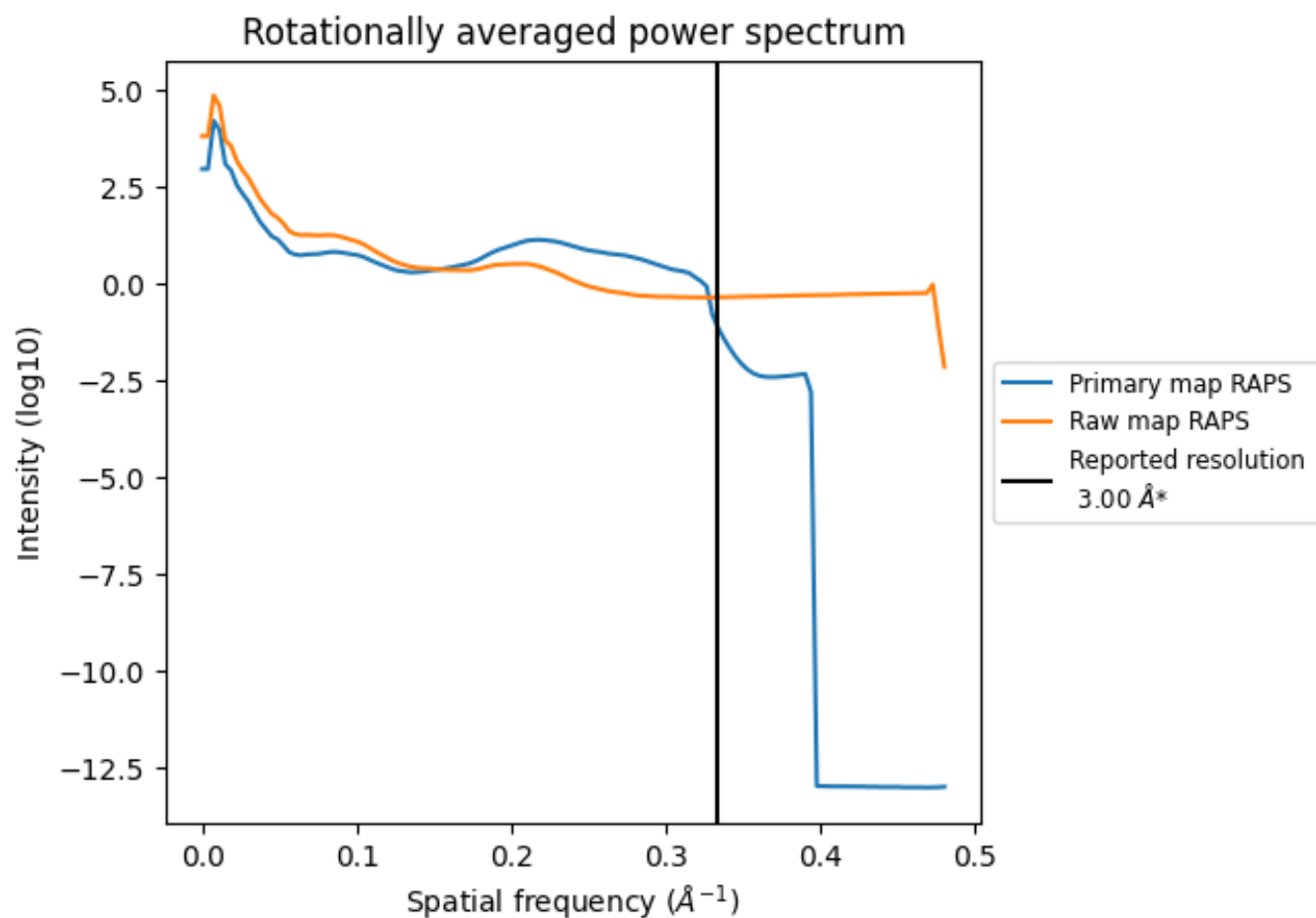
7.2 Volume estimate [i](#)



The volume at the recommended contour level is 36 nm³; this corresponds to an approximate mass of 32 kDa.

The volume estimate graph shows how the enclosed volume varies with the contour level. The recommended contour level is shown as a vertical line and the intersection between the line and the curve gives the volume of the enclosed surface at the given level.

7.3 Rotationally averaged power spectrum ⓘ

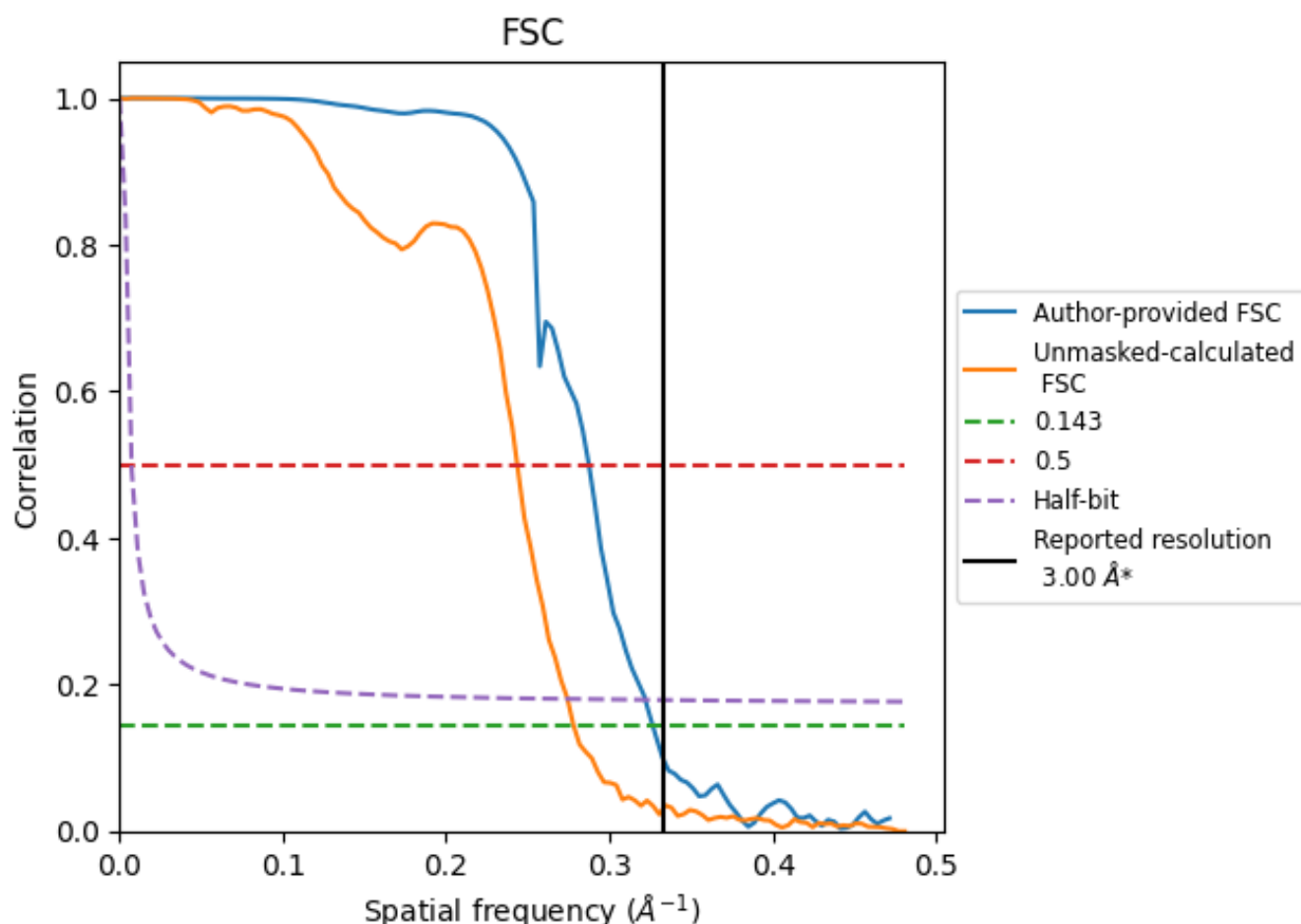


*Reported resolution corresponds to spatial frequency of 0.333 Å⁻¹

8 Fourier-Shell correlation [i](#)

Fourier-Shell Correlation (FSC) is the most commonly used method to estimate the resolution of single-particle and subtomogram-averaged maps. The shape of the curve depends on the imposed symmetry, mask and whether or not the two 3D reconstructions used were processed from a common reference. The reported resolution is shown as a black line. A curve is displayed for the half-bit criterion in addition to lines showing the 0.143 gold standard cut-off and 0.5 cut-off.

8.1 FSC [i](#)



*Reported resolution corresponds to spatial frequency of 0.333 \AA^{-1}

8.2 Resolution estimates [i](#)

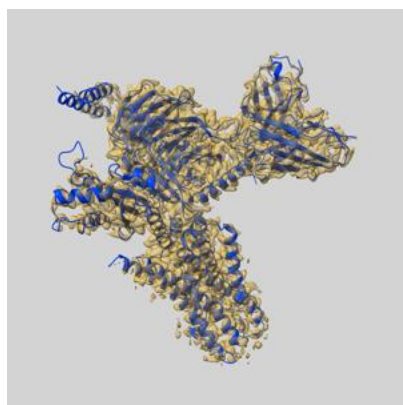
Resolution estimate (Å)	Estimation criterion (FSC cut-off)		
	0.143	0.5	Half-bit
Reported by author	3.00	-	-
Author-provided FSC curve	3.06	3.48	3.11
Unmasked-calculated*	3.60	4.11	3.65

*Resolution estimate based on FSC curve calculated by comparison of deposited half-maps. The value from deposited half-maps intersecting FSC 0.143 CUT-OFF 3.60 differs from the reported value 3.0 by more than 10 %

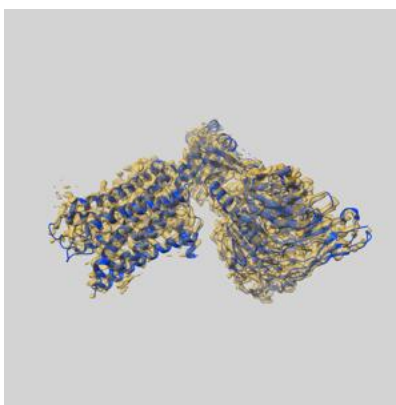
9 Map-model fit [i](#)

This section contains information regarding the fit between EMDB map EMD-34925 and PDB model 8HOC. Per-residue inclusion information can be found in [section 3](#) on [page 7](#).

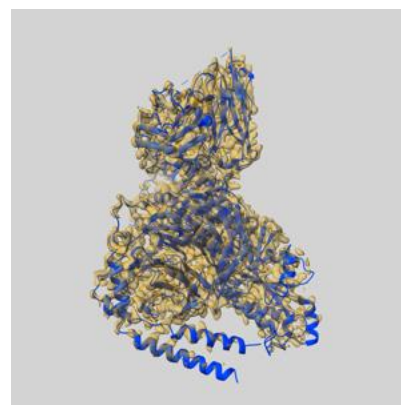
9.1 Map-model overlay [i](#)



X



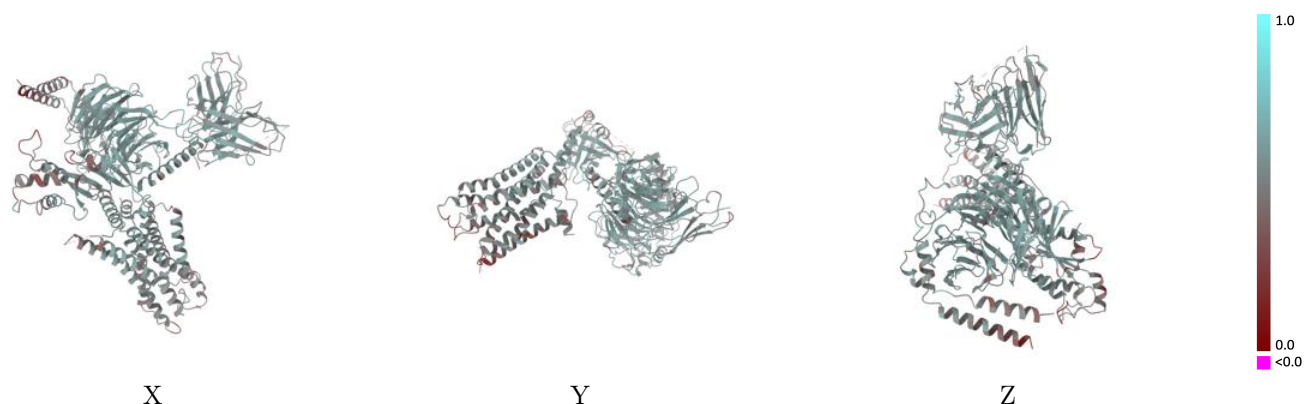
Y



Z

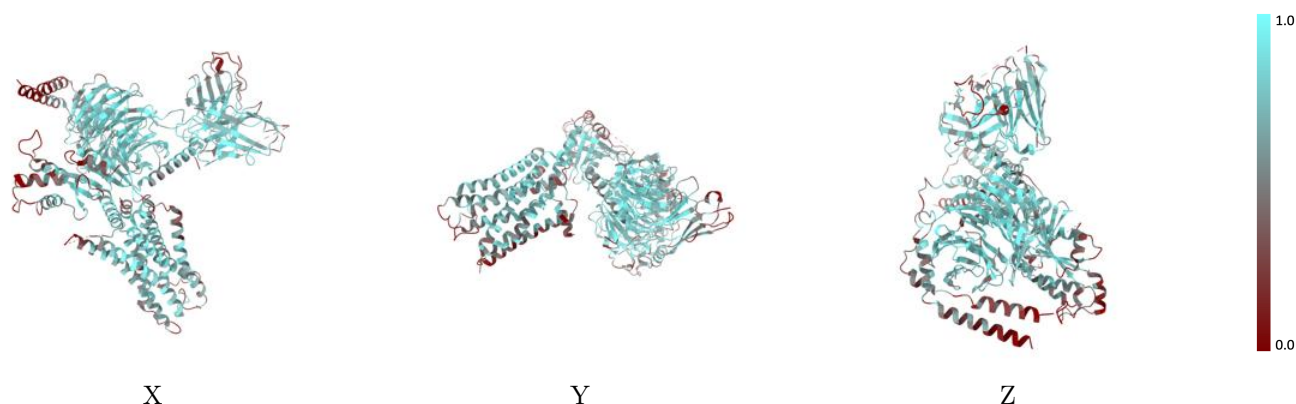
The images above show the 3D surface view of the map at the recommended contour level 0.85 at 50% transparency in yellow overlaid with a ribbon representation of the model coloured in blue. These images allow for the visual assessment of the quality of fit between the atomic model and the map.

9.2 Q-score mapped to coordinate model [i](#)



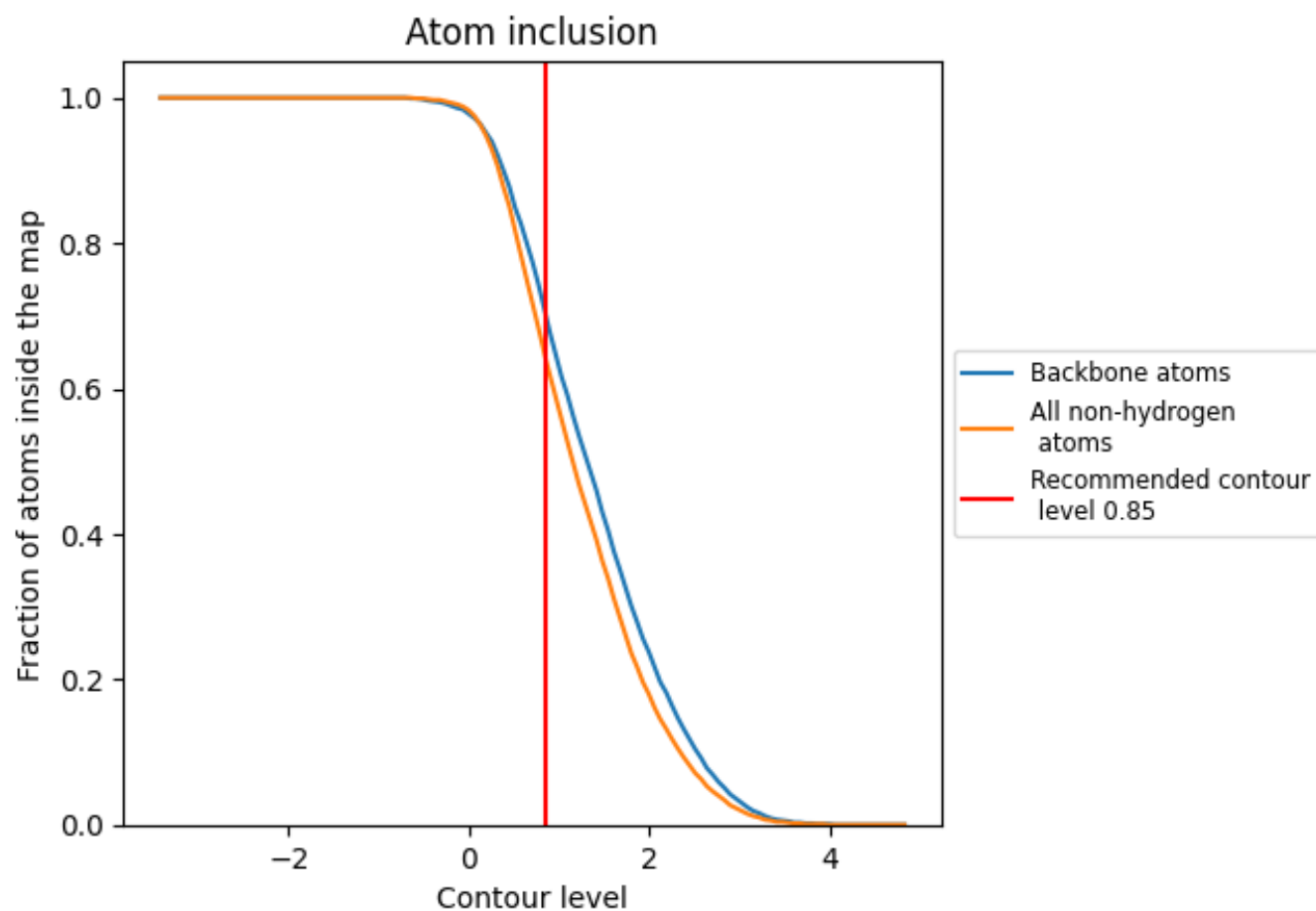
The images above show the model with each residue coloured according to its Q-score. This shows their resolvability in the map with higher Q-score values reflecting better resolvability. Please note: Q-score is calculating the resolvability of atoms, and thus high values are only expected at resolutions at which atoms can be resolved. Low Q-score values may therefore be expected for many entries.

9.3 Atom inclusion mapped to coordinate model [i](#)



The images above show the model with each residue coloured according to its atom inclusion. This shows to what extent they are inside the map at the recommended contour level (0.85).

9.4 Atom inclusion [i](#)



At the recommended contour level, 70% of all backbone atoms, 64% of all non-hydrogen atoms, are inside the map.

9.5 Map-model fit summary ⓘ

The table lists the average atom inclusion at the recommended contour level (0.85) and Q-score for the entire model and for each chain.

Chain	Atom inclusion	Q-score
All	<div></div> 0.6400	<div></div> 0.5210
A	<div></div> 0.5880	<div></div> 0.5120
B	<div></div> 0.7230	<div></div> 0.5510
G	<div></div> 0.4550	<div></div> 0.4880
R	<div></div> 0.5890	<div></div> 0.4870
S	<div></div> 0.6840	<div></div> 0.5390

