



Full wwPDB EM Validation Report ⓘ

Oct 28, 2024 – 12:19 PM JST

PDB ID : 8IAB
EMDB ID : EMD-35299
Title : The Arabidopsis CLCa transporter bound with chloride, ATP and PIP2
Authors : Yang, Z.; Zhang, X.; Zhang, P.
Deposited on : 2023-02-08
Resolution : 2.96 Å(reported)

This is a Full wwPDB EM Validation Report for a publicly released PDB entry.

We welcome your comments at validation@mail.wwpdb.org

A user guide is available at

<https://www.wwpdb.org/validation/2017/EMValidationReportHelp>

with specific help available everywhere you see the ⓘ symbol.

The types of validation reports are described at

<http://www.wwpdb.org/validation/2017/FAQs#types>.

The following versions of software and data (see [references ⓘ](#)) were used in the production of this report:

EMDB validation analysis : **FAILED**
Mogul : 1.8.5 (274361), CSD as541be (2020)
MolProbity : 4.02b-467
buster-report : 1.1.7 (2018)
Percentile statistics : 20231227.v01 (using entries in the PDB archive December 27th 2023)
MapQ : **FAILED**
Ideal geometry (proteins) : Engh & Huber (2001)
Ideal geometry (DNA, RNA) : Parkinson et al. (1996)
Validation Pipeline (wwPDB-VP) : 2.39

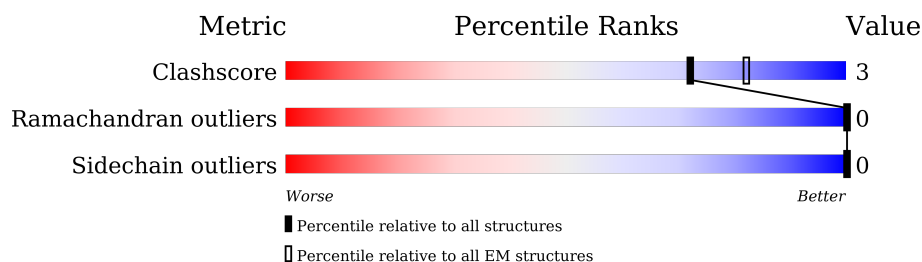
1 Overall quality at a glance

The following experimental techniques were used to determine the structure:

ELECTRON MICROSCOPY

The reported resolution of this entry is 2.96 Å.

Percentile scores (ranging between 0-100) for global validation metrics of the entry are shown in the following graphic. The table shows the number of entries on which the scores are based.



Metric	Whole archive (#Entries)	EM structures (#Entries)
Clashscore	210492	15764
Ramachandran outliers	207382	16835
Sidechain outliers	206894	16415

The table below summarises the geometric issues observed across the polymeric chains and their fit to the map. The red, orange, yellow and green segments of the bar indicate the fraction of residues that contain outliers for ≥ 3 , 2, 1 and 0 types of geometric quality criteria respectively. A grey segment represents the fraction of residues that are not modelled. The numeric value for each fraction is indicated below the corresponding segment, with a dot representing fractions $\leq 5\%$.

Mol	Chain	Length	Quality of chain
1	A	775	
1	B	775	

The following table lists non-polymeric compounds, carbohydrate monomers and non-standard residues in protein, DNA, RNA chains that are outliers for geometric or electron-density-fit criteria:

Mol	Type	Chain	Res	Chirality	Geometry	Clashes	Electron density
5	CL	A	804	-	-	X	-
5	CL	B	804	-	-	X	-

2 Entry composition [i](#)

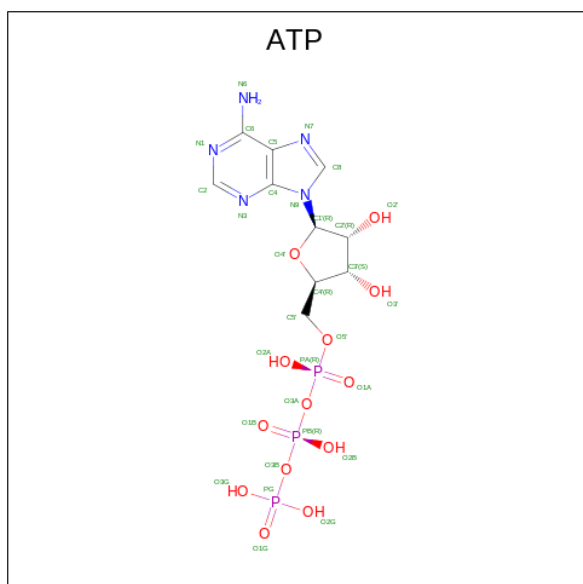
There are 5 unique types of molecules in this entry. The entry contains 11094 atoms, of which 0 are hydrogens and 0 are deuteriums.

In the tables below, the AltConf column contains the number of residues with at least one atom in alternate conformation and the Trace column contains the number of residues modelled with at most 2 atoms.

- Molecule 1 is a protein called Chloride channel protein CLC-a.

Mol	Chain	Residues	Atoms					AltConf	Trace
1	A	704	Total	C	N	O	S	0	0
			5465	3561	913	962	29		
1	B	704	Total	C	N	O	S	0	0
			5465	3561	913	962	29		

- Molecule 2 is ADENOSINE-5'-TRIPHOSPHATE (three-letter code: ATP) (formula: $C_{10}H_{16}N_5O_{13}P_3$).

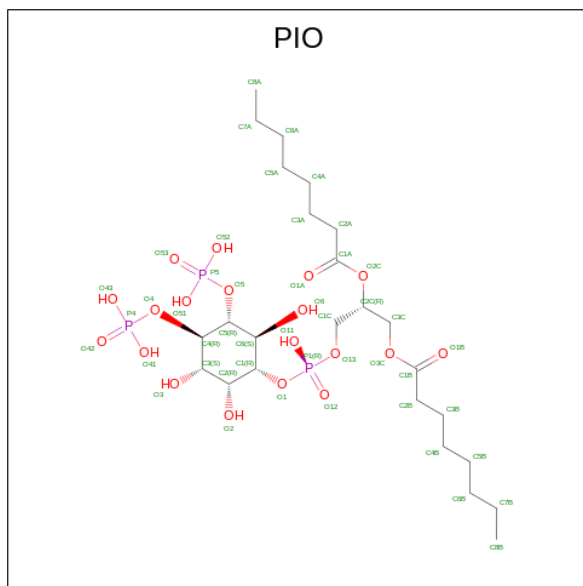


Mol	Chain	Residues	Atoms					AltConf
2	A	1	Total	C	N	O	P	0
			31	10	5	13	3	
2	B	1	Total	C	N	O	P	0
			31	10	5	13	3	

- Molecule 3 is MAGNESIUM ION (three-letter code: MG) (formula: Mg).

Mol	Chain	Residues	Atoms		AltConf
3	A	1	Total	Mg	0
			1	1	
3	B	1	Total	Mg	0
			1	1	

- Molecule 4 is [(2R)-2-octanoyloxy-3-[oxidanyl-[(1R,2R,3S,4R,5R,6S)-2,3,6-tris(oxidanyl)-4,5-diphosphonoxy-cyclohexyl]oxy-phosphoryl]oxy-propyl] octanoate (three-letter code: PIO) (formula: $C_{25}H_{49}O_{19}P_3$).



Mol	Chain	Residues	Atoms				AltConf
4	A	1	Total	C	O	P	0
			47	25	19	3	
4	B	1	Total	C	O	P	0
			47	25	19	3	

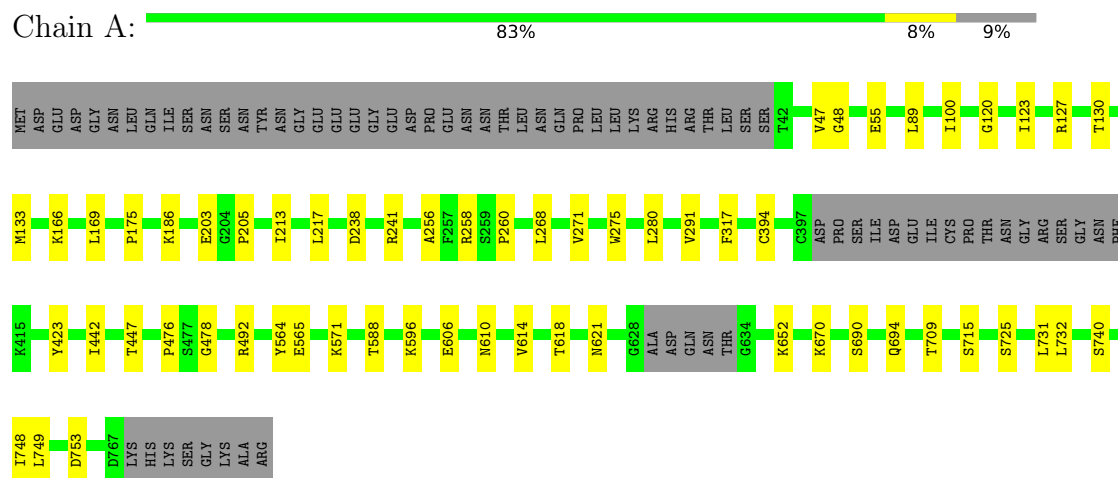
- Molecule 5 is CHLORIDE ION (three-letter code: CL) (formula: Cl).

Mol	Chain	Residues	Atoms		AltConf
5	A	3	Total	Cl	0
			3	3	
5	B	3	Total	Cl	0
			3	3	

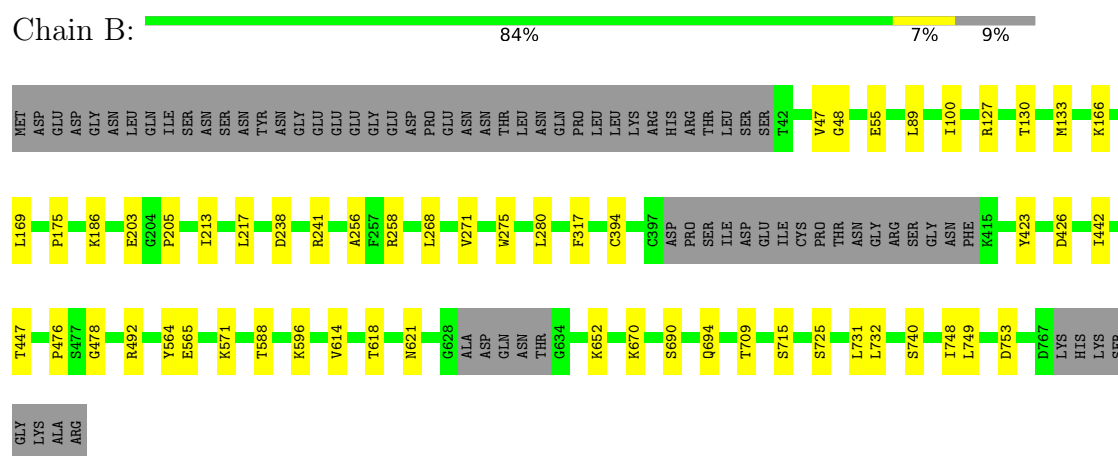
3 Residue-property plots [i](#)

These plots are drawn for all protein, RNA, DNA and oligosaccharide chains in the entry. The first graphic for a chain summarises the proportions of the various outlier classes displayed in the second graphic. The second graphic shows the sequence view annotated by issues in geometry. Residues are color-coded according to the number of geometric quality criteria for which they contain at least one outlier: green = 0, yellow = 1, orange = 2 and red = 3 or more. Stretches of 2 or more consecutive residues without any outlier are shown as a green connector. Residues present in the sample, but not in the model, are shown in grey.

- Molecule 1: Chloride channel protein CLC-a



- Molecule 1: Chloride channel protein CLC-a



4 Experimental information

Property	Value	Source
EM reconstruction method	SINGLE PARTICLE	Depositor
Imposed symmetry	POINT, Not provided	
Number of particles used	135900	Depositor
Resolution determination method	FSC 0.143 CUT-OFF	Depositor
CTF correction method	PHASE FLIPPING AND AMPLITUDE CORRECTION	Depositor
Microscope	FEI TITAN KRIOS	Depositor
Voltage (kV)	300	Depositor
Electron dose ($e^-/\text{\AA}^2$)	56.3	Depositor
Minimum defocus (nm)	1000	Depositor
Maximum defocus (nm)	2000	Depositor
Magnification	Not provided	
Image detector	GATAN K3 (6k x 4k)	Depositor

5 Model quality [i](#)

5.1 Standard geometry [i](#)

Bond lengths and bond angles in the following residue types are not validated in this section: ATP, CL, PIO, MG

The Z score for a bond length (or angle) is the number of standard deviations the observed value is removed from the expected value. A bond length (or angle) with $|Z| > 5$ is considered an outlier worth inspection. RMSZ is the root-mean-square of all Z scores of the bond lengths (or angles).

Mol	Chain	Bond lengths		Bond angles	
		RMSZ	$\# Z > 5$	RMSZ	$\# Z > 5$
1	A	0.27	0/5589	0.49	0/7602
1	B	0.27	0/5589	0.49	0/7602
All	All	0.27	0/11178	0.49	0/15204

There are no bond length outliers.

There are no bond angle outliers.

There are no chirality outliers.

There are no planarity outliers.

5.2 Too-close contacts [i](#)

In the following table, the Non-H and H(model) columns list the number of non-hydrogen atoms and hydrogen atoms in the chain respectively. The H(added) column lists the number of hydrogen atoms added and optimized by MolProbity. The Clashes column lists the number of clashes within the asymmetric unit, whereas Symm-Clashes lists symmetry-related clashes.

Mol	Chain	Non-H	H(model)	H(added)	Clashes	Symm-Clashes
1	A	5465	0	5591	38	0
1	B	5465	0	5591	37	0
2	A	31	0	12	1	0
2	B	31	0	12	1	0
3	A	1	0	0	0	0
3	B	1	0	0	0	0
4	A	47	0	44	0	0
4	B	47	0	44	1	0
5	A	3	0	0	4	0
5	B	3	0	0	4	0
All	All	11094	0	11294	71	0

The all-atom clashscore is defined as the number of clashes found per 1000 atoms (including hydrogen atoms). The all-atom clashscore for this structure is 3.

All (71) close contacts within the same asymmetric unit are listed below, sorted by their clash magnitude.

Atom-1	Atom-2	Interatomic distance (Å)	Clash overlap (Å)
1:A:564:TYR:OH	5:A:804:CL:CL	2.02	1.15
1:B:564:TYR:OH	5:B:804:CL:CL	2.02	1.14
1:A:203:GLU:HG3	1:A:256:ALA:HB1	1.83	0.61
1:B:203:GLU:HG3	1:B:256:ALA:HB1	1.83	0.59
1:B:55:GLU:OE1	1:B:621:ASN:ND2	2.35	0.59
1:A:55:GLU:OE1	1:A:621:ASN:ND2	2.35	0.59
1:A:564:TYR:CZ	5:A:804:CL:CL	2.92	0.58
1:B:564:TYR:CZ	5:B:804:CL:CL	2.92	0.58
1:A:394:CYS:HB3	1:A:423:TYR:HB3	1.87	0.57
1:A:47:VAL:HG21	1:A:175:PRO:HD2	1.88	0.56
1:B:478:GLY:HA3	5:B:803:CL:CL	2.43	0.55
1:B:394:CYS:HB3	1:B:423:TYR:HB3	1.87	0.55
1:B:47:VAL:HG21	1:B:175:PRO:HD2	1.88	0.55
1:A:478:GLY:HA3	5:A:803:CL:CL	2.43	0.55
1:B:186:LYS:HD2	1:B:205:PRO:HB3	1.89	0.55
1:B:275:TRP:HE1	1:B:280:LEU:HB2	1.73	0.54
1:A:186:LYS:HD2	1:A:205:PRO:HB3	1.89	0.53
1:A:275:TRP:HE1	1:A:280:LEU:HB2	1.73	0.53
1:B:588:THR:HA	1:B:715:SER:HA	1.91	0.53
1:A:588:THR:HA	1:A:715:SER:HA	1.91	0.52
1:B:442:ILE:O	1:B:492:ARG:NH1	2.44	0.51
1:A:652:LYS:NZ	1:A:670:LYS:O	2.45	0.50
1:B:652:LYS:NZ	1:B:670:LYS:O	2.45	0.50
1:A:442:ILE:O	1:A:492:ARG:NH1	2.44	0.49
1:A:614:VAL:O	1:A:618:THR:OG1	2.30	0.49
1:A:48:GLY:O	1:A:571:LYS:NZ	2.45	0.49
1:B:48:GLY:O	1:B:571:LYS:NZ	2.45	0.48
1:B:614:VAL:O	1:B:618:THR:OG1	2.30	0.48
1:A:725:SER:HB3	1:B:725:SER:HB3	1.95	0.48
1:A:740:SER:H	1:B:740:SER:HB2	1.79	0.47
1:B:100:ILE:HD12	1:B:213:ILE:HD11	1.96	0.47
1:A:258:ARG:NH2	1:A:317:PHE:O	2.48	0.47
1:B:258:ARG:NH2	1:B:317:PHE:O	2.48	0.47
1:A:564:TYR:CE2	5:A:804:CL:CL	3.05	0.46
1:A:740:SER:HB2	1:B:740:SER:H	1.79	0.46
1:A:709:THR:HG22	1:A:732:LEU:HB2	1.96	0.46
1:A:238:ASP:OD1	1:A:241:ARG:NH1	2.48	0.46

Continued on next page...

Continued from previous page...

Atom-1	Atom-2	Interatomic distance (Å)	Clash overlap (Å)
1:B:238:ASP:OD1	1:B:241:ARG:NH1	2.48	0.46
1:B:564:TYR:CE2	5:B:804:CL:CL	3.05	0.46
1:A:100:ILE:HD12	1:A:213:ILE:HD11	1.96	0.46
1:B:130:THR:HA	1:B:133:MET:HE2	1.98	0.46
1:B:709:THR:HG22	1:B:732:LEU:HB2	1.96	0.46
1:A:130:THR:HA	1:A:133:MET:HE2	1.98	0.46
1:B:169:LEU:HD12	1:B:271:VAL:HG12	1.99	0.44
1:A:169:LEU:HD12	1:A:271:VAL:HG12	1.99	0.44
1:A:606:GLU:OE1	1:A:610:ASN:ND2	2.44	0.43
1:B:447:THR:HG1	1:B:492:ARG:NH2	2.17	0.43
1:B:690:SER:O	1:B:694:GLN:NE2	2.51	0.43
1:B:166:LYS:NZ	1:B:565:GLU:OE1	2.52	0.43
1:A:447:THR:HG1	1:A:492:ARG:NH2	2.15	0.43
1:A:166:LYS:NZ	1:A:565:GLU:OE1	2.52	0.43
1:B:596:LYS:NZ	1:B:748:ILE:O	2.51	0.43
1:B:186:LYS:HD3	1:B:476:PRO:HB3	2.01	0.43
1:A:186:LYS:HD3	1:A:476:PRO:HB3	2.01	0.42
1:A:268:LEU:HD11	1:B:268:LEU:HD21	2.01	0.42
1:A:268:LEU:HD21	1:B:268:LEU:HD11	2.01	0.42
1:A:690:SER:O	1:A:694:GLN:NE2	2.51	0.42
1:B:447:THR:O	1:B:447:THR:OG1	2.38	0.42
4:B:802:PIO:H2A	4:B:802:PIO:H2C	1.87	0.41
1:B:753:ASP:OD1	2:B:800:ATP:O3'	2.32	0.41
1:A:89:LEU:HD22	1:A:217:LEU:HB3	2.02	0.41
1:A:596:LYS:NZ	1:A:748:ILE:O	2.51	0.41
1:B:89:LEU:HD22	1:B:217:LEU:HB3	2.02	0.41
1:B:731:LEU:HD23	1:B:749:LEU:HD12	2.02	0.41
1:A:260:PRO:HD3	1:A:291:VAL:HG11	2.03	0.41
1:B:127:ARG:HH21	1:B:130:THR:HG21	1.86	0.41
1:A:127:ARG:HH21	1:A:130:THR:HG21	1.86	0.41
1:A:731:LEU:HD23	1:A:749:LEU:HD12	2.02	0.41
1:A:753:ASP:OD1	2:A:800:ATP:O3'	2.32	0.40
1:A:120:GLY:HA2	1:A:123:ILE:HG12	2.03	0.40
1:B:426:ASP:N	1:B:426:ASP:OD1	2.51	0.40

There are no symmetry-related clashes.

5.3 Torsion angles

5.3.1 Protein backbone

In the following table, the Percentiles column shows the percent Ramachandran outliers of the chain as a percentile score with respect to all PDB entries followed by that with respect to all EM entries.

The Analysed column shows the number of residues for which the backbone conformation was analysed, and the total number of residues.

Mol	Chain	Analysed	Favoured	Allowed	Outliers	Percentiles	
1	A	698/775 (90%)	679 (97%)	19 (3%)	0	100	100
1	B	698/775 (90%)	679 (97%)	19 (3%)	0	100	100
All	All	1396/1550 (90%)	1358 (97%)	38 (3%)	0	100	100

There are no Ramachandran outliers to report.

5.3.2 Protein sidechains

In the following table, the Percentiles column shows the percent sidechain outliers of the chain as a percentile score with respect to all PDB entries followed by that with respect to all EM entries.

The Analysed column shows the number of residues for which the sidechain conformation was analysed, and the total number of residues.

Mol	Chain	Analysed	Rotameric	Outliers	Percentiles	
1	A	593/656 (90%)	593 (100%)	0	100	100
1	B	593/656 (90%)	593 (100%)	0	100	100
All	All	1186/1312 (90%)	1186 (100%)	0	100	100

There are no protein residues with a non-rotameric sidechain to report.

Sometimes sidechains can be flipped to improve hydrogen bonding and reduce clashes. All (6) such sidechains are listed below:

Mol	Chain	Res	Type
1	A	237	ASN
1	A	758	ASN
1	A	761	GLN
1	B	237	ASN
1	B	758	ASN
1	B	761	GLN

5.3.3 RNA ⓘ

There are no RNA molecules in this entry.

5.4 Non-standard residues in protein, DNA, RNA chains ⓘ

There are no non-standard protein/DNA/RNA residues in this entry.

5.5 Carbohydrates ⓘ

There are no oligosaccharides in this entry.

5.6 Ligand geometry ⓘ

Of 12 ligands modelled in this entry, 8 are monoatomic - leaving 4 for Mogul analysis.

In the following table, the Counts columns list the number of bonds (or angles) for which Mogul statistics could be retrieved, the number of bonds (or angles) that are observed in the model and the number of bonds (or angles) that are defined in the Chemical Component Dictionary. The Link column lists molecule types, if any, to which the group is linked. The Z score for a bond length (or angle) is the number of standard deviations the observed value is removed from the expected value. A bond length (or angle) with $|Z| > 2$ is considered an outlier worth inspection. RMSZ is the root-mean-square of all Z scores of the bond lengths (or angles).

Mol	Type	Chain	Res	Link	Bond lengths			Bond angles		
					Counts	RMSZ	# Z > 2	Counts	RMSZ	# Z > 2
4	PIO	A	802	-	47,47,47	1.11	5 (10%)	61,65,65	1.12	4 (6%)
4	PIO	B	802	-	47,47,47	1.11	5 (10%)	61,65,65	1.12	4 (6%)
2	ATP	B	800	3	26,33,33	0.91	1 (3%)	31,52,52	1.46	5 (16%)
2	ATP	A	800	3	26,33,33	0.91	1 (3%)	31,52,52	1.46	5 (16%)

In the following table, the Chirals column lists the number of chiral outliers, the number of chiral centers analysed, the number of these observed in the model and the number defined in the Chemical Component Dictionary. Similar counts are reported in the Torsion and Rings columns. '-' means no outliers of that kind were identified.

Mol	Type	Chain	Res	Link	Chirals	Torsions	Rings
4	PIO	A	802	-	-	13/44/68/68	0/1/1/1
4	PIO	B	802	-	-	13/44/68/68	0/1/1/1
2	ATP	B	800	3	-	0/18/38/38	0/3/3/3
2	ATP	A	800	3	-	0/18/38/38	0/3/3/3

All (12) bond length outliers are listed below:

Mol	Chain	Res	Type	Atoms	Z	Observed(Å)	Ideal(Å)
4	A	802	PIO	O2C-C2C	-2.64	1.40	1.46
4	B	802	PIO	O2C-C2C	-2.60	1.40	1.46
4	B	802	PIO	O3C-C3C	-2.55	1.39	1.45
4	A	802	PIO	O3C-C3C	-2.51	1.39	1.45
4	A	802	PIO	P4-O4	2.41	1.63	1.59
4	B	802	PIO	P4-O4	2.40	1.63	1.59
2	A	800	ATP	C5-C4	2.35	1.47	1.40
2	B	800	ATP	C5-C4	2.35	1.47	1.40
4	B	802	PIO	P5-O5	2.20	1.63	1.59
4	A	802	PIO	P5-O5	2.18	1.63	1.59
4	B	802	PIO	O2C-C1A	2.04	1.40	1.34
4	A	802	PIO	O2C-C1A	2.02	1.40	1.34

All (18) bond angle outliers are listed below:

Mol	Chain	Res	Type	Atoms	Z	Observed(°)	Ideal(°)
4	B	802	PIO	O2C-C1A-C2A	4.87	121.99	111.50
4	A	802	PIO	O2C-C1A-C2A	4.84	121.92	111.50
2	A	800	ATP	N3-C2-N1	-3.24	123.61	128.68
2	B	800	ATP	N3-C2-N1	-3.24	123.61	128.68
2	A	800	ATP	C4-C5-N7	-2.75	106.53	109.40
2	B	800	ATP	C4-C5-N7	-2.75	106.53	109.40
2	A	800	ATP	PB-O3B-PG	-2.73	123.46	132.83
2	B	800	ATP	PB-O3B-PG	-2.73	123.46	132.83
4	A	802	PIO	O3C-C1B-C2B	2.69	120.34	111.91
4	B	802	PIO	O3C-C1B-C2B	2.67	120.29	111.91
2	A	800	ATP	PA-O3A-PB	-2.67	123.67	132.83
2	B	800	ATP	PA-O3A-PB	-2.67	123.67	132.83
2	A	800	ATP	C3'-C2'-C1'	2.41	104.61	100.98
2	B	800	ATP	C3'-C2'-C1'	2.41	104.61	100.98
4	A	802	PIO	C3C-C2C-C1C	-2.33	106.29	111.79
4	B	802	PIO	C3C-C2C-C1C	-2.32	106.31	111.79
4	B	802	PIO	O2C-C1A-O1A	-2.16	118.49	123.70
4	A	802	PIO	O2C-C1A-O1A	-2.12	118.59	123.70

There are no chirality outliers.

All (26) torsion outliers are listed below:

Mol	Chain	Res	Type	Atoms
4	A	802	PIO	O1A-C1A-O2C-C2C
4	A	802	PIO	C2A-C1A-O2C-C2C

Continued on next page...

Continued from previous page...

Mol	Chain	Res	Type	Atoms
4	B	802	PIO	O1A-C1A-O2C-C2C
4	B	802	PIO	C2A-C1A-O2C-C2C
4	A	802	PIO	O1B-C1B-O3C-C3C
4	B	802	PIO	O1B-C1B-O3C-C3C
4	A	802	PIO	C2B-C1B-O3C-C3C
4	B	802	PIO	C2B-C1B-O3C-C3C
4	A	802	PIO	C1-O1-P1-O13
4	B	802	PIO	C1-O1-P1-O13
4	B	802	PIO	C3B-C4B-C5B-C6B
4	A	802	PIO	C3B-C4B-C5B-C6B
4	A	802	PIO	C4B-C5B-C6B-C7B
4	B	802	PIO	C4B-C5B-C6B-C7B
4	B	802	PIO	C2A-C3A-C4A-C5A
4	A	802	PIO	C2A-C3A-C4A-C5A
4	A	802	PIO	C2B-C3B-C4B-C5B
4	B	802	PIO	C2B-C3B-C4B-C5B
4	A	802	PIO	O13-C1C-C2C-O2C
4	B	802	PIO	O13-C1C-C2C-O2C
4	A	802	PIO	C1-O1-P1-O11
4	B	802	PIO	C1-O1-P1-O11
4	A	802	PIO	O13-C1C-C2C-C3C
4	B	802	PIO	O13-C1C-C2C-C3C
4	A	802	PIO	C1A-C2A-C3A-C4A
4	B	802	PIO	C1A-C2A-C3A-C4A

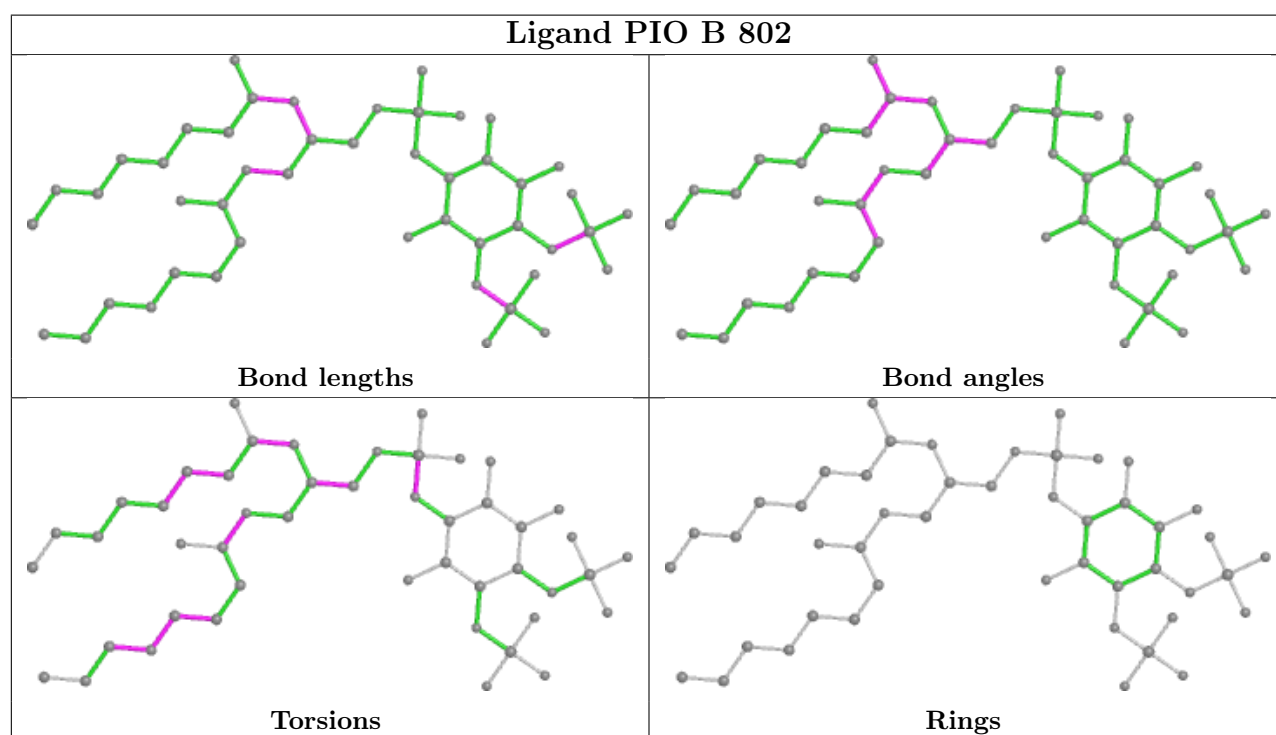
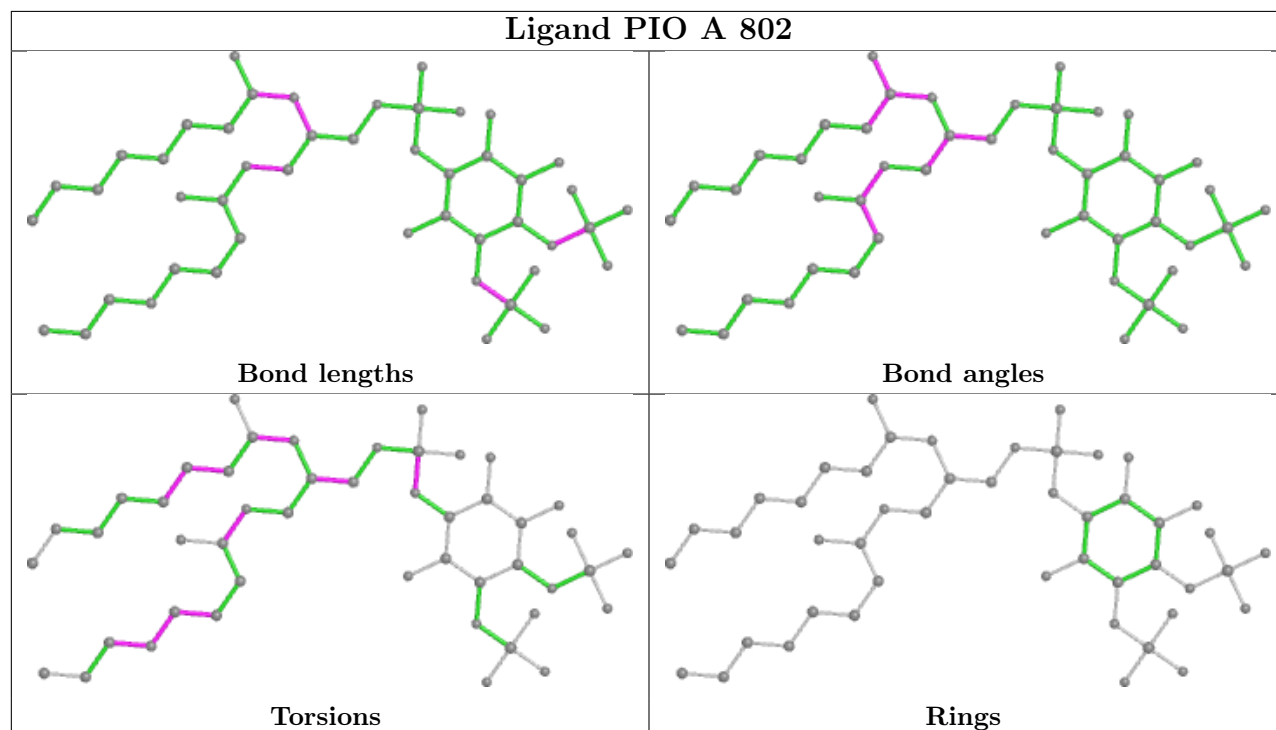
There are no ring outliers.

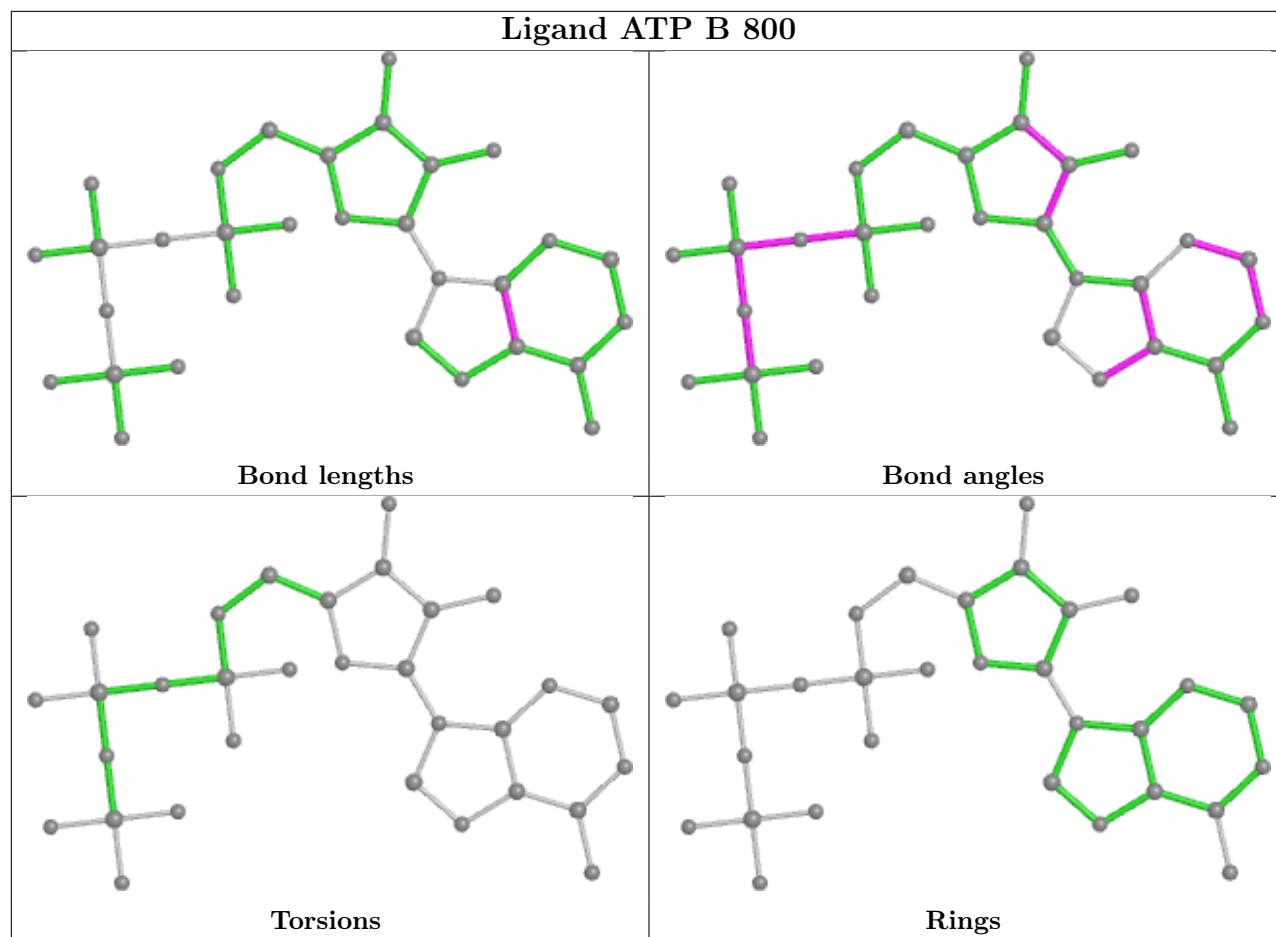
3 monomers are involved in 3 short contacts:

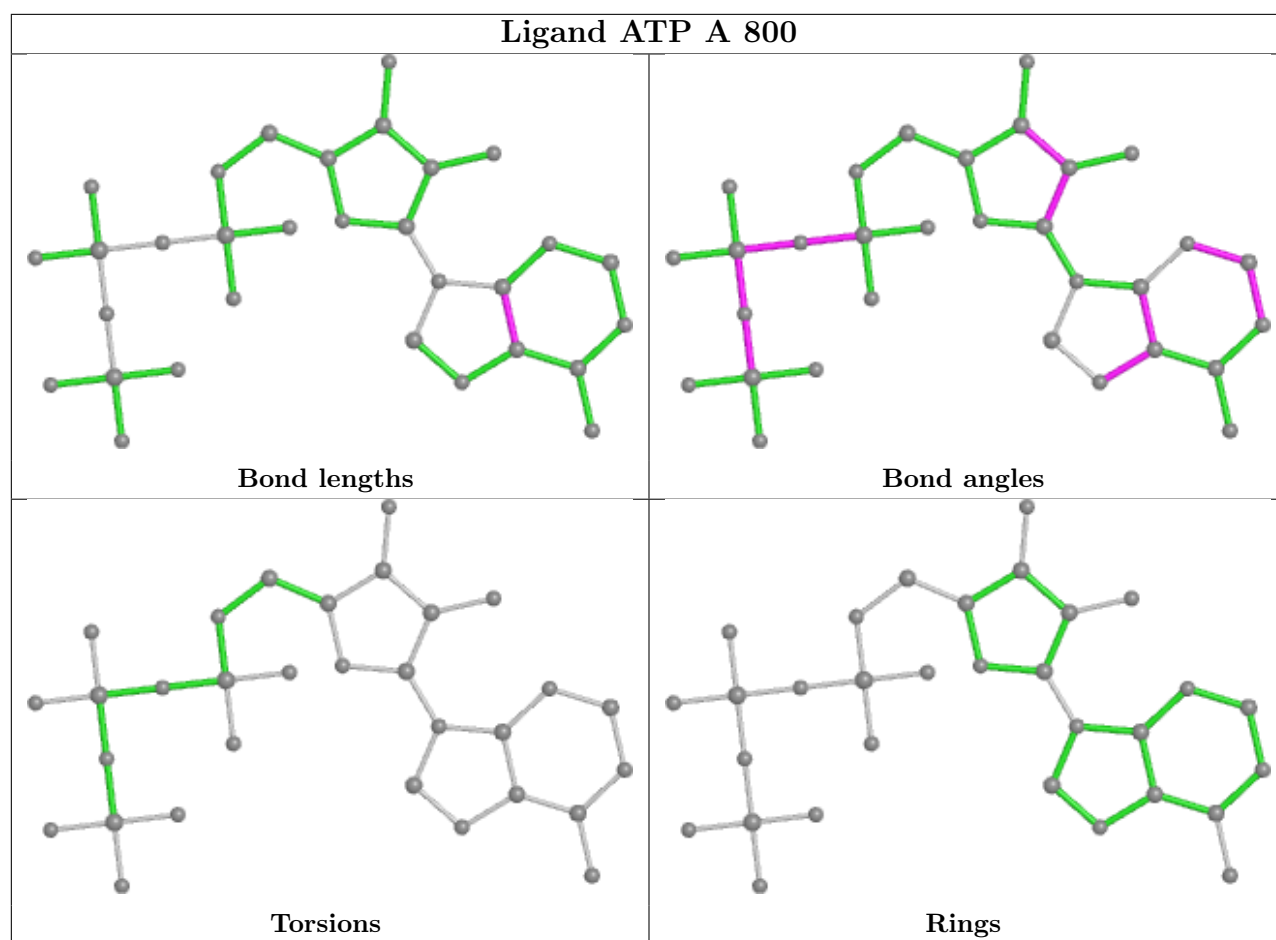
Mol	Chain	Res	Type	Clashes	Symm-Clashes
4	B	802	PIO	1	0
2	B	800	ATP	1	0
2	A	800	ATP	1	0

The following is a two-dimensional graphical depiction of Mogul quality analysis of bond lengths, bond angles, torsion angles, and ring geometry for all instances of the Ligand of Interest. In addition, ligands with molecular weight > 250 and outliers as shown on the validation Tables will also be included. For torsion angles, if less than 5% of the Mogul distribution of torsion angles is within 10 degrees of the torsion angle in question, then that torsion angle is considered an outlier. Any bond that is central to one or more torsion angles identified as an outlier by Mogul will be highlighted in the graph. For rings, the root-mean-square deviation (RMSD) between the ring in question and similar rings identified by Mogul is calculated over all ring torsion angles. If the average RMSD is greater than 60 degrees and the minimal RMSD between the ring in question and

any Mogul-identified rings is also greater than 60 degrees, then that ring is considered an outlier. The outliers are highlighted in purple. The color gray indicates Mogul did not find sufficient equivalents in the CSD to analyse the geometry.







5.7 Other polymers [i](#)

There are no such residues in this entry.

5.8 Polymer linkage issues [i](#)

There are no chain breaks in this entry.