



## wwPDB EM Validation Summary Report ⓘ

Mar 26, 2025 – 02:57 PM JST

PDB ID : 9INF  
EMDB ID : EMD-60705  
Title : Cryo-EM structure of human XPR1 in closed state in the presence of KIDINS220-1-432 and 10 mM KH<sub>2</sub>PO<sub>4</sub>  
Authors : Yin, Y.; Zuo, P.; Liang, L.  
Deposited on : 2024-07-06  
Resolution : 3.36 Å(reported)

This is a wwPDB EM Validation Summary Report for a publicly released PDB entry.

We welcome your comments at [validation@mail.wwpdb.org](mailto:validation@mail.wwpdb.org)

A user guide is available at  
<https://www.wwpdb.org/validation/2017/EMValidationReportHelp>  
with specific help available everywhere you see the ⓘ symbol.

The types of validation reports are described at  
<http://www.wwpdb.org/validation/2017/FAQs#types>.

---

The following versions of software and data (see [references ⓘ](#)) were used in the production of this report:

EMDB validation analysis : 0.0.1.dev117  
Mogul : 1.8.5 (274361), CSD as541be (2020)  
MolProbity : 4.02b-467  
buster-report : 1.1.7 (2018)  
Percentile statistics : 20231227.v01 (using entries in the PDB archive December 27th 2023)  
MapQ : 1.9.13  
Ideal geometry (proteins) : Engh & Huber (2001)  
Ideal geometry (DNA, RNA) : Parkinson et al. (1996)  
Validation Pipeline (wwPDB-VP) : 2.41.2

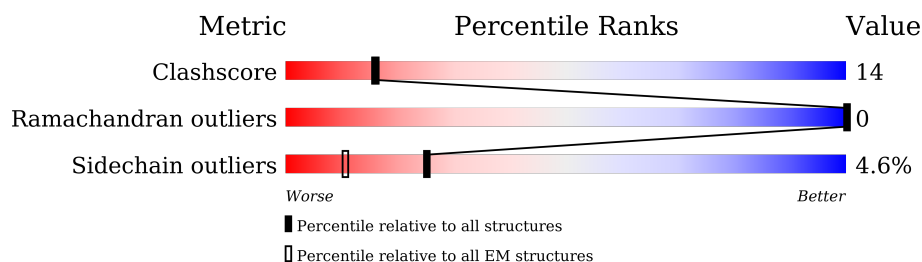
# 1 Overall quality at a glance

The following experimental techniques were used to determine the structure:

*ELECTRON MICROSCOPY*

The reported resolution of this entry is 3.36 Å.

Percentile scores (ranging between 0-100) for global validation metrics of the entry are shown in the following graphic. The table shows the number of entries on which the scores are based.



Metric	Whole archive (#Entries)	EM structures (#Entries)
Clashscore	210492	15764
Ramachandran outliers	207382	16835
Sidechain outliers	206894	16415

The table below summarises the geometric issues observed across the polymeric chains and their fit to the map. The red, orange, yellow and green segments of the bar indicate the fraction of residues that contain outliers for  $\geq 3$ , 2, 1 and 0 types of geometric quality criteria respectively. A grey segment represents the fraction of residues that are not modelled. The numeric value for each fraction is indicated below the corresponding segment, with a dot representing fractions  $\leq 5\%$ . The upper red bar (where present) indicates the fraction of residues that have poor fit to the EM map (all-atom inclusion  $< 40\%$ ). The numeric value is given above the bar.

Mol	Chain	Length	Quality of chain
1	A	704	 35% 21% 43%
1	B	704	 5% 37% 19% 43%

## 2 Entry composition

There are 6 unique types of molecules in this entry. The entry contains 7282 atoms, of which 0 are hydrogens and 0 are deuteriums.

In the tables below, the AltConf column contains the number of residues with at least one atom in alternate conformation and the Trace column contains the number of residues modelled with at most 2 atoms.

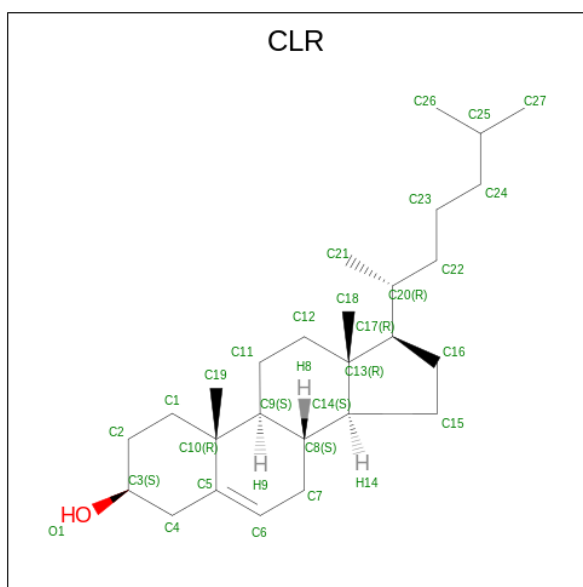
- Molecule 1 is a protein called Solute carrier family 53 member 1.

Mol	Chain	Residues	Atoms					AltConf	Trace
1	A	401	Total	C	N	O	S	0	0
			3333	2233	535	549	16		
1	B	401	Total	C	N	O	S	0	0
			3333	2233	535	549	16		

There are 16 discrepancies between the modelled and reference sequences:

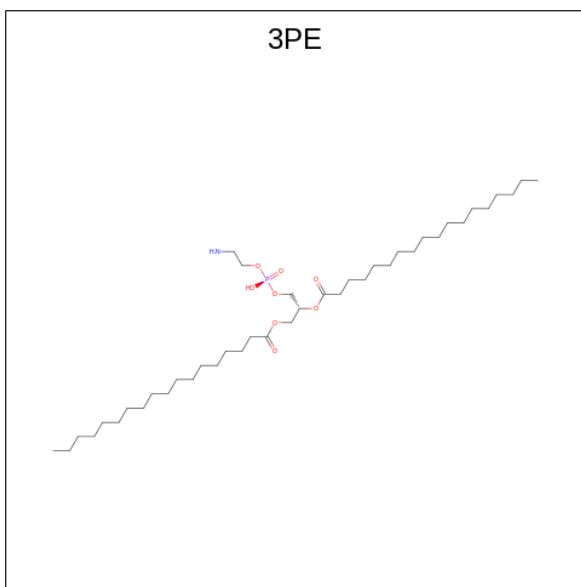
Chain	Residue	Modelled	Actual	Comment	Reference
A	697	SER	-	expression tag	UNP Q9UBH6
A	698	ARG	-	expression tag	UNP Q9UBH6
A	699	GLU	-	expression tag	UNP Q9UBH6
A	700	ASN	-	expression tag	UNP Q9UBH6
A	701	LEU	-	expression tag	UNP Q9UBH6
A	702	TYR	-	expression tag	UNP Q9UBH6
A	703	PHE	-	expression tag	UNP Q9UBH6
A	704	GLN	-	expression tag	UNP Q9UBH6
B	697	SER	-	expression tag	UNP Q9UBH6
B	698	ARG	-	expression tag	UNP Q9UBH6
B	699	GLU	-	expression tag	UNP Q9UBH6
B	700	ASN	-	expression tag	UNP Q9UBH6
B	701	LEU	-	expression tag	UNP Q9UBH6
B	702	TYR	-	expression tag	UNP Q9UBH6
B	703	PHE	-	expression tag	UNP Q9UBH6
B	704	GLN	-	expression tag	UNP Q9UBH6

- Molecule 2 is CHOLESTEROL (three-letter code: CLR) (formula: C<sub>27</sub>H<sub>46</sub>O) (labeled as "Ligand of Interest" by depositor).



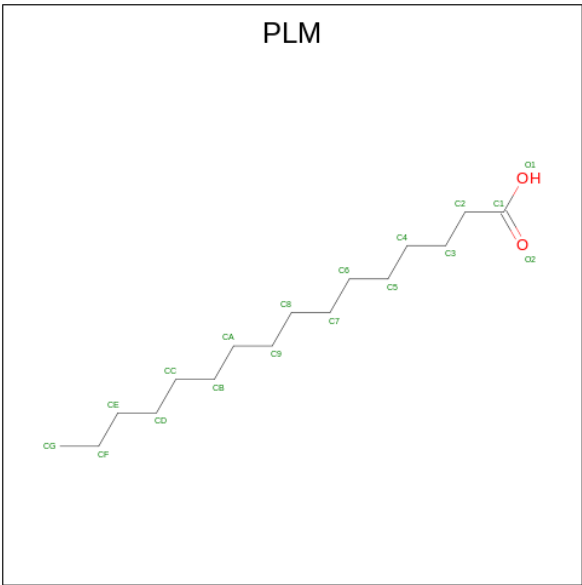
Mol	Chain	Residues	Atoms			AltConf
2	A	1	Total	C	O	0
			28	27	1	
2	A	1	Total	C	O	0
			28	27	1	
2	A	1	Total	C	O	0
			28	27	1	
2	A	1	Total	C	O	0
			28	27	1	
2	A	1	Total	C	O	0
			28	27	1	
2	B	1	Total	C	O	0
			28	27	1	
2	B	1	Total	C	O	0
			28	27	1	
2	B	1	Total	C	O	0
			28	27	1	

- Molecule 3 is 1,2-Distearoyl-sn-glycerophosphoethanolamine (three-letter code: 3PE) (formula:  $C_{41}H_{82}NO_8P$ ) (labeled as "Ligand of Interest" by depositor).



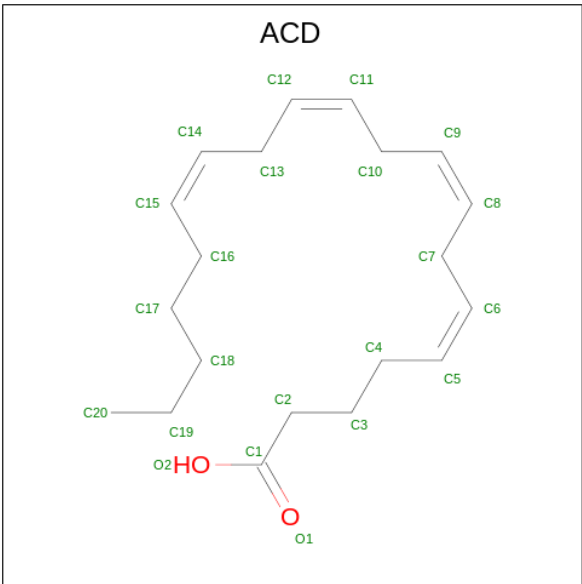
Mol	Chain	Residues	Atoms					AltConf
3	A	1	Total	C	N	O	P	0
			51	41	1	8	1	
3	A	1	Total	C	N	O	P	0
			51	41	1	8	1	
3	A	1	Total	C	N	O	P	0
			51	41	1	8	1	
3	B	1	Total	C	N	O	P	0
			51	41	1	8	1	
3	B	1	Total	C	N	O	P	0
			51	41	1	8	1	
3	B	1	Total	C	N	O	P	0
			51	41	1	8	1	

- Molecule 4 is PALMITIC ACID (three-letter code: PLM) (formula: C<sub>16</sub>H<sub>32</sub>O<sub>2</sub>) (labeled as "Ligand of Interest" by depositor).



Mol	Chain	Residues	Atoms			AltConf
4	A	1	Total	C	O	0
			18	16	2	
4	B	1	Total	C	O	0
			18	16	2	

- Molecule 5 is ARACHIDONIC ACID (three-letter code: ACD) (formula: C<sub>20</sub>H<sub>32</sub>O<sub>2</sub>) (labeled as "Ligand of Interest" by depositor).



Mol	Chain	Residues	Atoms			AltConf
5	A	1	Total	C	O	0
			22	20	2	

Continued on next page...

*Continued from previous page...*

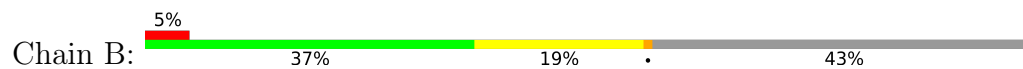
Mol	Chain	Residues	Atoms			AltConf
5	B	1	Total	C	O	0
			22	20	2	

- Molecule 6 is water.

Mol	Chain	Residues	Atoms		AltConf
6	A	3	Total	O	0
			3	3	
6	B	3	Total	O	0
			3	3	







MET  
LYS  
PHE  
ALA  
GLU  
GLU  
HIS  
LEU  
SER  
ALA  
HIS  
ILE  
THR  
PRO  
GLU  
TRP  
LYS  
GLN  
GLN  
TYR  
ILE  
GLN  
TYR  
ARG  
PHE  
ALA  
PHE  
LYS  
ASP  
MET  
GLN  
LEU  
GLN  
TYR  
SER  
LEU  
GLN  
GLN  
ASP  
GLN  
ALA  
PRO  
SER  
VAL  
GLU  
VAL  
THR  
THR  
GLU  
VAL  
LYS  
ARG  
GLN  
TYR  
PHE  
ALA  
PHE  
LYS  
GLU  
LYS  
PHE  
GLU  
HIS  
PHE  
GLN

THR  
CYS  
GLU  
LYS  
GLU  
LEU  
ALA  
LYS  
ILE  
ASN  
THR  
PHE  
TYR  
SER  
PHE  
GLU  
LYS  
SER  
LYS  
GLU  
LEU  
ALA  
GLU  
TYR  
LEU  
ALA  
SER  
GLN  
SER  
LEU  
GLN  
GLN  
THR  
LEU  
GLN  
ASN  
GLN  
ASN  
GLU  
LEU  
GLN  
ASN  
PHE  
GLY  
LEU  
ASP  
PHE  
ARG  
ALA  
GLN  
LYS  
ILE  
GLU  
SER  
LYS  
THR  
GLY  
VAL  
ASP  
THR  
THR  
THR  
LEU  
GLU  
ARG  
GLN  
SER  
ARG  
ARG  
LYS  
GLY  
ALA  
PRO  
VAL  
PHE  
TRP  
GLU  
HIS  
LEU  
SER  
HIS  
PHE  
HIS  
GLU

GLU  
ARG  
VAL  
GLN  
HIS  
ARG  
ASN  
ILE  
LYS  
ASP  
LEU  
LYS  
LEU  
GLN  
ALA  
PHE  
SER  
SER  
GLU  
PHE  
PHE  
TYR  
LEU  
SER  
GLN  
SER  
LEU  
ILE  
ARG  
PHE  
ALA  
GLN  
ASN  
TYR  
GLN  
GLY  
THR  
GLY  
PHE  
ARG  
ALA  
PHE  
GLN  
LYS  
ILE  
GLU  
SER  
LYS  
HIS  
ASP  
LYS  
ILE  
LEU  
GLU  
THR  
SER  
THR  
ARG  
GLY  
LYS  
ALA  
PRO  
VAL  
TRP  
ARG  
VAL  
ALA  
VAL

GLU  
VAL  
ALA  
PRO  
PHE  
THR  
THR  
CYS  
LYS  
LYS  
ILE  
ASN  
GLN  
LEU  
ILE  
THR  
THR  
GLU  
ALA  
VAL  
VAL  
THR  
ASN  
GLU  
LEU  
GLU  
ASP  
GLY  
ASP  
ARG  
GLN  
LYS  
ALA  
MET  
LYS  
ARG  
LEU  
ARG  
LEU  
VAL  
PRO  
LEU  
GLY  
ALA  
A226  
Q227  
C241  
G242  
I243  
V246  
L247  
T250  
L251  
V252  
L253

T261  
D262  
R263  
S264  
I265  
R270  
Y271  
Y272  
R273  
G274  
G275  
I279  
L282  
L285  
Y290  
W292  
R293  
Q294  
V297  
V300  
L301  
I302  
L305  
R308  
S312  
H313  
Q314  
A320  
G321  
I325  
L331  
L332  
F336  
Y345  
Y352  
F357  
F358  
L359  
I360  
L374  
L375

T383  
A384  
P385  
F386  
F391  
F394  
W395  
Q399  
L400  
N401  
Y412  
Y417  
E420  
L421  
D424  
E425  
S426  
K427  
G428  
L429  
L430  
P431  
N432  
E435  
E436  
S437  
G438  
I439  
C440  
H441  
K442  
Y443  
T444  
Y445  
G446  
V447  
R448  
I450  
V451  
Q452  
C453  
P455  
R459  
D469  
T470  
K471  
R472

A473  
F474  
P475  
H476  
L477  
V478  
N479  
A480  
G481  
K482  
Y483  
S484  
T485  
T486  
F487  
V490  
T491  
F492  
A493  
Y496  
S497  
T498  
H499  
E501  
R502  
S505  
D506  
T507  
F510  
F511  
Y512  
L513  
W514  
I515  
V516  
F517  
Y518  
I519  
S521  
S522  
C523  
Y524  
T525  
L526  
I527  
W528  
D529  
L530  
D533  
E543  
R548

E549  
E550  
Q555  
V556  
A557  
Y558  
Y559  
Y560  
I563  
I564  
E565  
D566  
V567  
I568  
I569  
R570  
W573  
T574  
I577  
S578  
I579  
T582  
T583  
L584  
L585  
P586  
I592  
A593  
T594  
R603  
R604  
F605  
N608  
F609  
F610  
R611  
N614  
E615  
H616  
L617  
G621  
E622  
V626  
ARG  
ASP  
ILE  
SER  
VAL  
ALA

PRO  
LEU  
ASN  
ALA  
ASP  
ASP  
GLN  
THR  
LEU  
LEU  
GLU  
GLN  
MET  
MET  
ASP  
GLN  
ASP  
ASP  
GLY  
VAL  
ARG  
ASN  
ARG  
GLN  
LYS  
ASN  
ARG  
SER  
TRP  
LYS  
TYR  
ASN  
GLN  
SER  
ILE  
SER  
LEU  
ARG  
ARG  
PRO  
ARG  
LEU  
ALA  
SER  
GLN  
SER  
LYS  
ALA  
ARG  
ASP  
THR  
LYS  
VAL  
LEU  
ILE  
GLU  
ASP  
THR  
ASP  
ASP  
ASP

GLU  
ALA  
ASN  
THR  
SER  
SER  
ARG  
GLU  
ASN  
ASN  
TYR  
PHE  
GLN

## 4 Experimental information

Property	Value	Source
EM reconstruction method	SINGLE PARTICLE	Depositor
Imposed symmetry	POINT, Not provided	
Number of particles used	230260	Depositor
Resolution determination method	FSC 0.143 CUT-OFF	Depositor
CTF correction method	PHASE FLIPPING AND AMPLITUDE CORRECTION	Depositor
Microscope	FEI TITAN KRIOS	Depositor
Voltage (kV)	300	Depositor
Electron dose ( $e^-/\text{\AA}^2$ )	50	Depositor
Minimum defocus (nm)	1500	Depositor
Maximum defocus (nm)	2000	Depositor
Magnification	Not provided	
Image detector	GATAN K2 SUMMIT (4k x 4k)	Depositor
Maximum map value	1.095	Depositor
Minimum map value	-0.718	Depositor
Average map value	-0.000	Depositor
Map value standard deviation	0.013	Depositor
Recommended contour level	0.135	Depositor
Map size (Å)	394.08, 394.08, 394.08	wwPDB
Map dimensions	480, 480, 480	wwPDB
Map angles (°)	90.0, 90.0, 90.0	wwPDB
Pixel spacing (Å)	0.821, 0.821, 0.821	Depositor

## 5 Model quality [i](#)

### 5.1 Standard geometry [i](#)

Bond lengths and bond angles in the following residue types are not validated in this section: CLR, PLM, ACD, 3PE

The Z score for a bond length (or angle) is the number of standard deviations the observed value is removed from the expected value. A bond length (or angle) with  $|Z| > 5$  is considered an outlier worth inspection. RMSZ is the root-mean-square of all Z scores of the bond lengths (or angles).

Mol	Chain	Bond lengths		Bond angles	
		RMSZ	$\# Z  > 5$	RMSZ	$\# Z  > 5$
1	A	0.26	0/3444	0.49	0/4688
1	B	0.27	0/3444	0.49	0/4688
All	All	0.26	0/6888	0.49	0/9376

There are no bond length outliers.

There are no bond angle outliers.

There are no chirality outliers.

There are no planarity outliers.

### 5.2 Too-close contacts [i](#)

In the following table, the Non-H and H(model) columns list the number of non-hydrogen atoms and hydrogen atoms in the chain respectively. The H(added) column lists the number of hydrogen atoms added and optimized by MolProbity. The Clashes column lists the number of clashes within the asymmetric unit, whereas Symm-Clashes lists symmetry-related clashes.

Mol	Chain	Non-H	H(model)	H(added)	Clashes	Symm-Clashes
1	A	3333	0	3317	100	0
1	B	3333	0	3317	99	0
2	A	140	0	229	7	0
2	B	84	0	138	6	0
3	A	153	0	246	11	0
3	B	153	0	246	11	0
4	A	18	0	31	1	0
4	B	18	0	31	0	0
5	A	22	0	31	0	0
5	B	22	0	31	0	0
6	A	3	0	0	0	0

*Continued on next page...*

*Continued from previous page...*

Mol	Chain	Non-H	H(model)	H(added)	Clashes	Symm-Clashes
6	B	3	0	0	0	0
All	All	7282	0	7617	212	0

The all-atom clashscore is defined as the number of clashes found per 1000 atoms (including hydrogen atoms). The all-atom clashscore for this structure is 14.

The worst 5 of 212 close contacts within the same asymmetric unit are listed below, sorted by their clash magnitude.

Atom-1	Atom-2	Interatomic distance (Å)	Clash overlap (Å)
1:A:419:LEU:HG	1:A:420:GLU:HG3	1.61	0.81
1:B:560:TYR:HA	1:B:563:ILE:HD12	1.61	0.80
1:A:374:LEU:HD22	3:A:802:3PE:H241	1.68	0.75
1:B:293:ARG:HH12	1:B:312:SER:HA	1.55	0.72
1:B:374:LEU:HD22	3:B:802:3PE:H241	1.73	0.71

There are no symmetry-related clashes.

## 5.3 Torsion angles [i](#)

### 5.3.1 Protein backbone [i](#)

In the following table, the Percentiles column shows the percent Ramachandran outliers of the chain as a percentile score with respect to all PDB entries followed by that with respect to all EM entries.

The Analysed column shows the number of residues for which the backbone conformation was analysed, and the total number of residues.

Mol	Chain	Analysed	Favoured	Allowed	Outliers	Percentiles	
1	A	399/704 (57%)	382 (96%)	17 (4%)	0	100	100
1	B	399/704 (57%)	388 (97%)	11 (3%)	0	100	100
All	All	798/1408 (57%)	770 (96%)	28 (4%)	0	100	100

There are no Ramachandran outliers to report.

### 5.3.2 Protein sidechains [i](#)

In the following table, the Percentiles column shows the percent sidechain outliers of the chain as a percentile score with respect to all PDB entries followed by that with respect to all EM

entries.

The Analysed column shows the number of residues for which the sidechain conformation was analysed, and the total number of residues.

Mol	Chain	Analysed	Rotameric	Outliers	Percentiles	
1	A	355/629 (56%)	337 (95%)	18 (5%)	20	46
1	B	355/629 (56%)	340 (96%)	15 (4%)	25	51
All	All	710/1258 (56%)	677 (95%)	33 (5%)	25	50

5 of 33 residues with a non-rotameric sidechain are listed below:

Mol	Chain	Res	Type
1	B	517	PHE
1	B	518	TYR
1	B	609	PHE
1	A	524	TYR
1	A	510	PHE

Sometimes sidechains can be flipped to improve hydrogen bonding and reduce clashes. All (2) such sidechains are listed below:

Mol	Chain	Res	Type
1	A	288	ASN
1	B	314	GLN

### 5.3.3 RNA [i](#)

There are no RNA molecules in this entry.

## 5.4 Non-standard residues in protein, DNA, RNA chains [i](#)

There are no non-standard protein/DNA/RNA residues in this entry.

## 5.5 Carbohydrates [i](#)

There are no oligosaccharides in this entry.

## 5.6 Ligand geometry [i](#)

18 ligands are modelled in this entry.

In the following table, the Counts columns list the number of bonds (or angles) for which Mogul statistics could be retrieved, the number of bonds (or angles) that are observed in the model and the number of bonds (or angles) that are defined in the Chemical Component Dictionary. The Link column lists molecule types, if any, to which the group is linked. The Z score for a bond length (or angle) is the number of standard deviations the observed value is removed from the expected value. A bond length (or angle) with  $|Z| > 2$  is considered an outlier worth inspection. RMSZ is the root-mean-square of all Z scores of the bond lengths (or angles).

Mol	Type	Chain	Res	Link	Bond lengths			Bond angles		
					Counts	RMSZ	$\# Z  > 2$	Counts	RMSZ	$\# Z  > 2$
2	CLR	B	801	-	31,31,31	0.36	0	48,48,48	0.58	0
2	CLR	A	804	-	31,31,31	0.35	0	48,48,48	0.53	0
2	CLR	B	804	-	31,31,31	0.36	0	48,48,48	0.50	0
3	3PE	B	803	-	50,50,50	0.51	0	53,55,55	0.53	1 (1%)
3	3PE	B	805	-	50,50,50	0.51	0	53,55,55	0.54	1 (1%)
4	PLM	A	809	-	17,17,17	0.90	1 (5%)	17,17,17	0.75	2 (11%)
2	CLR	A	807	-	31,31,31	0.42	0	48,48,48	1.12	5 (10%)
5	ACD	A	810	-	21,21,21	0.57	0	21,21,21	0.58	0
2	CLR	A	808	-	31,31,31	0.36	0	48,48,48	0.53	0
2	CLR	B	806	-	31,31,31	0.35	0	48,48,48	0.57	0
5	ACD	B	808	-	21,21,21	0.57	0	21,21,21	0.59	0
3	3PE	A	803	-	50,50,50	0.51	0	53,55,55	0.53	1 (1%)
3	3PE	A	802	-	50,50,50	0.51	0	53,55,55	0.58	2 (3%)
3	3PE	B	802	-	50,50,50	0.51	0	53,55,55	0.57	2 (3%)
2	CLR	A	805	-	31,31,31	0.35	0	48,48,48	0.49	0
4	PLM	B	807	-	17,17,17	0.91	1 (5%)	17,17,17	0.75	2 (11%)
3	3PE	A	806	-	50,50,50	0.51	0	53,55,55	0.53	1 (1%)
2	CLR	A	801	-	31,31,31	0.36	0	48,48,48	0.51	0

In the following table, the Chirals column lists the number of chiral outliers, the number of chiral centers analysed, the number of these observed in the model and the number defined in the Chemical Component Dictionary. Similar counts are reported in the Torsion and Rings columns. '-' means no outliers of that kind were identified.

Mol	Type	Chain	Res	Link	Chirals	Torsions	Rings
2	CLR	B	801	-	-	2/10/68/68	0/4/4/4
2	CLR	A	804	-	-	5/10/68/68	0/4/4/4
2	CLR	B	804	-	-	7/10/68/68	0/4/4/4
3	3PE	B	803	-	-	17/54/54/54	-
3	3PE	B	805	-	-	17/54/54/54	-
4	PLM	A	809	-	-	4/15/15/15	-

*Continued on next page...*

*Continued from previous page...*

Mol	Type	Chain	Res	Link	Chirals	Torsions	Rings
2	CLR	A	807	-	-	6/10/68/68	0/4/4/4
5	ACD	A	810	-	-	3/19/19/19	-
2	CLR	A	808	-	-	6/10/68/68	0/4/4/4
2	CLR	B	806	-	-	8/10/68/68	0/4/4/4
5	ACD	B	808	-	-	4/19/19/19	-
3	3PE	A	803	-	-	15/54/54/54	-
3	3PE	A	802	-	-	22/54/54/54	-
3	3PE	B	802	-	-	24/54/54/54	-
2	CLR	A	805	-	-	7/10/68/68	0/4/4/4
4	PLM	B	807	-	-	3/15/15/15	-
3	3PE	A	806	-	-	27/54/54/54	-
2	CLR	A	801	-	-	3/10/68/68	0/4/4/4

All (2) bond length outliers are listed below:

Mol	Chain	Res	Type	Atoms	Z	Observed(Å)	Ideal(Å)
4	B	807	PLM	C2-C1	2.92	1.57	1.50
4	A	809	PLM	C2-C1	2.86	1.57	1.50

The worst 5 of 17 bond angle outliers are listed below:

Mol	Chain	Res	Type	Atoms	Z	Observed(°)	Ideal(°)
2	A	807	CLR	C13-C17-C20	3.54	125.03	119.49
2	A	807	CLR	C22-C20-C17	3.40	117.30	110.28
2	A	807	CLR	C17-C13-C14	-3.08	96.42	100.07
2	A	807	CLR	C16-C17-C20	2.48	115.98	112.15
3	A	802	3PE	C2-O21-C21	2.38	123.64	117.79

There are no chirality outliers.

5 of 180 torsion outliers are listed below:

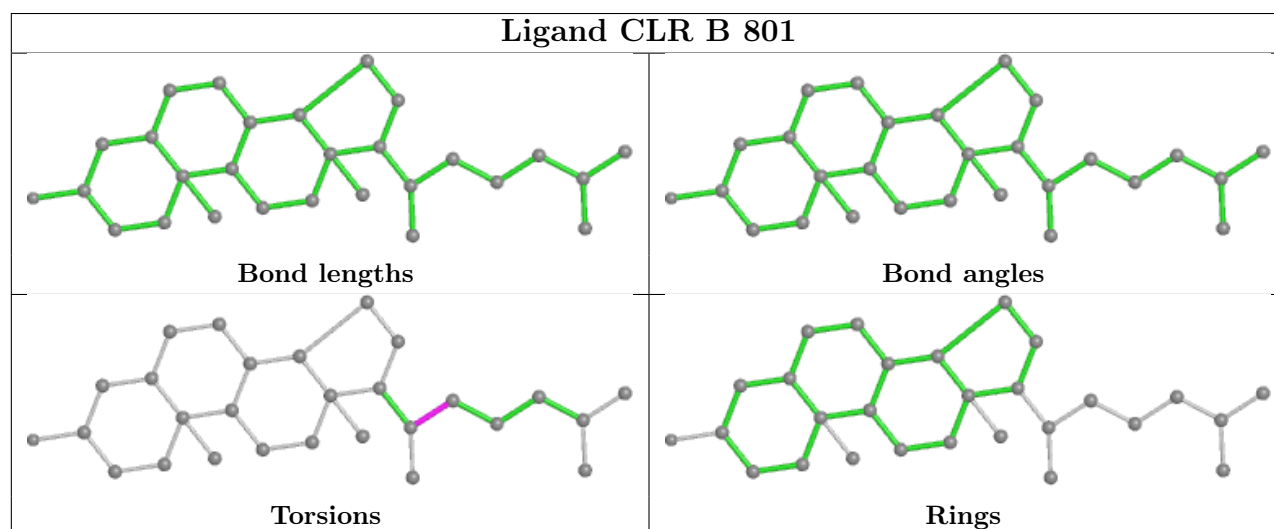
Mol	Chain	Res	Type	Atoms
2	B	806	CLR	C13-C17-C20-C21
2	B	806	CLR	C13-C17-C20-C22
2	B	806	CLR	C16-C17-C20-C22
3	A	802	3PE	C1-O11-P-O12
3	A	802	3PE	C1-O11-P-O13

There are no ring outliers.

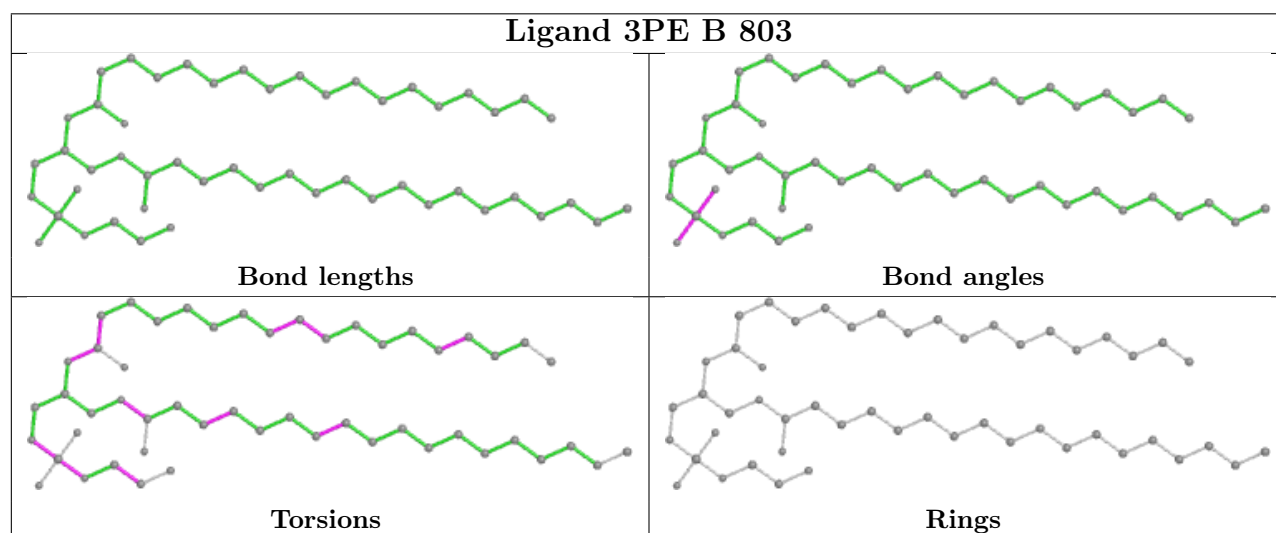
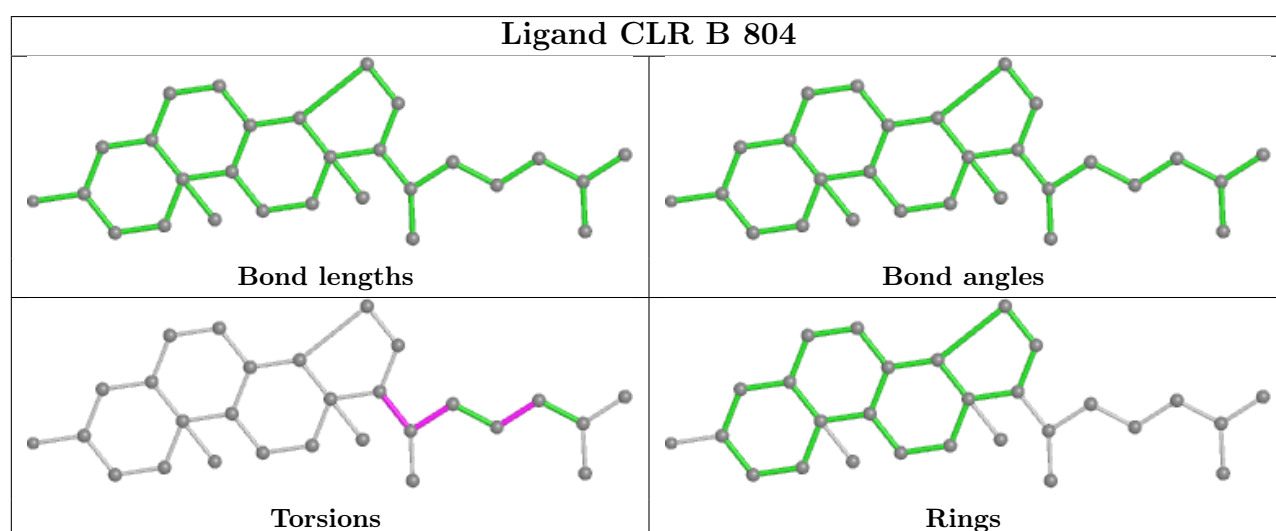
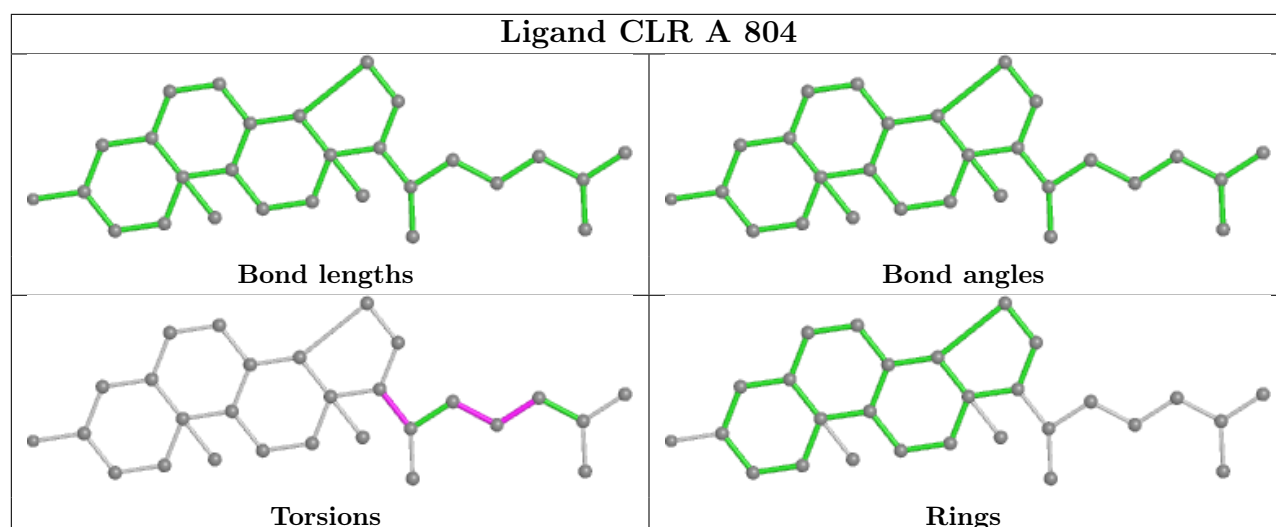
14 monomers are involved in 34 short contacts:

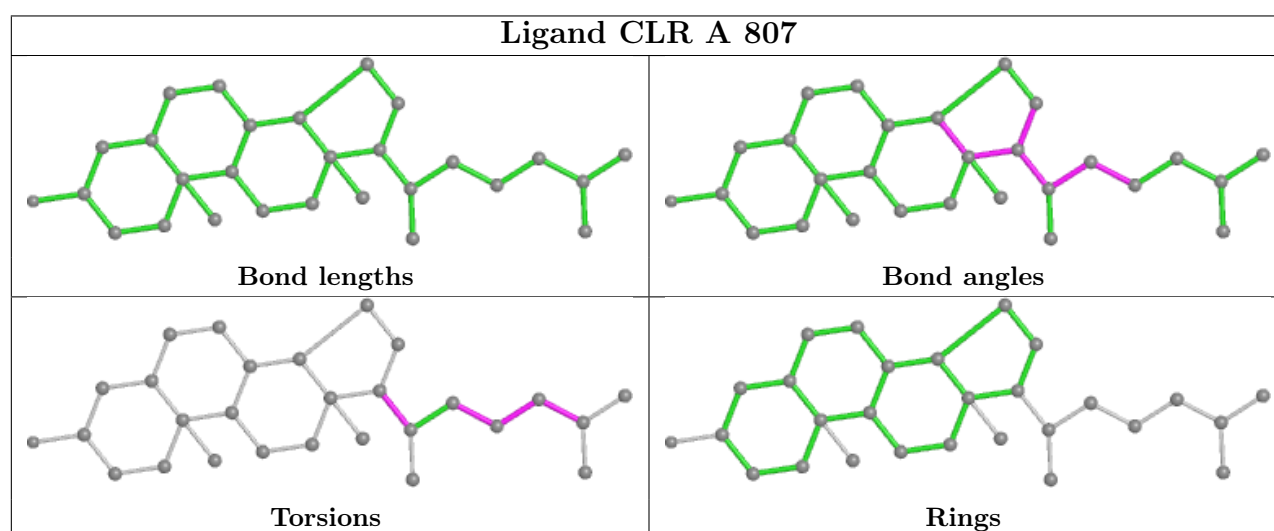
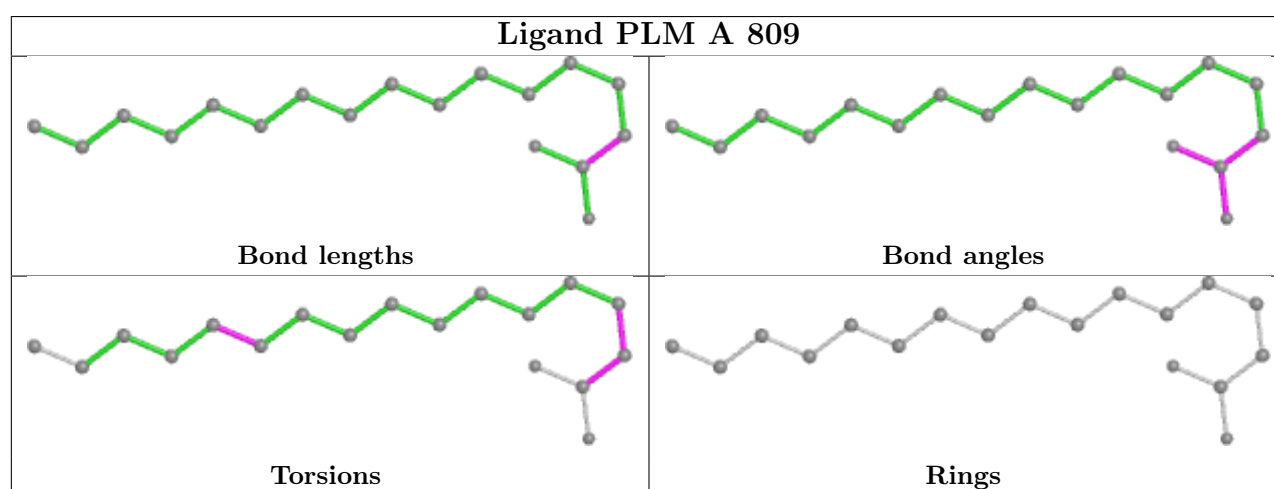
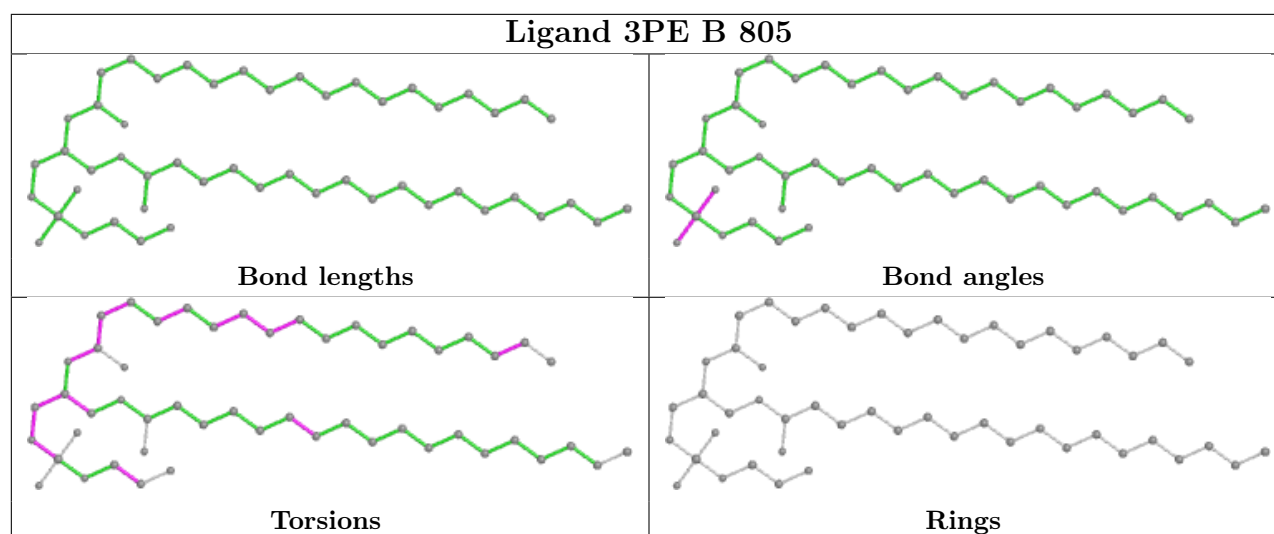
Mol	Chain	Res	Type	Clashes	Symm-Clashes
2	B	801	CLR	1	0
2	A	804	CLR	2	0
2	B	804	CLR	3	0
3	B	803	3PE	4	0
3	B	805	3PE	3	0
4	A	809	PLM	1	0
2	A	807	CLR	2	0
2	B	806	CLR	2	0
3	A	803	3PE	2	0
3	A	802	3PE	3	0
3	B	802	3PE	4	0
2	A	805	CLR	1	0
3	A	806	3PE	6	0
2	A	801	CLR	2	0

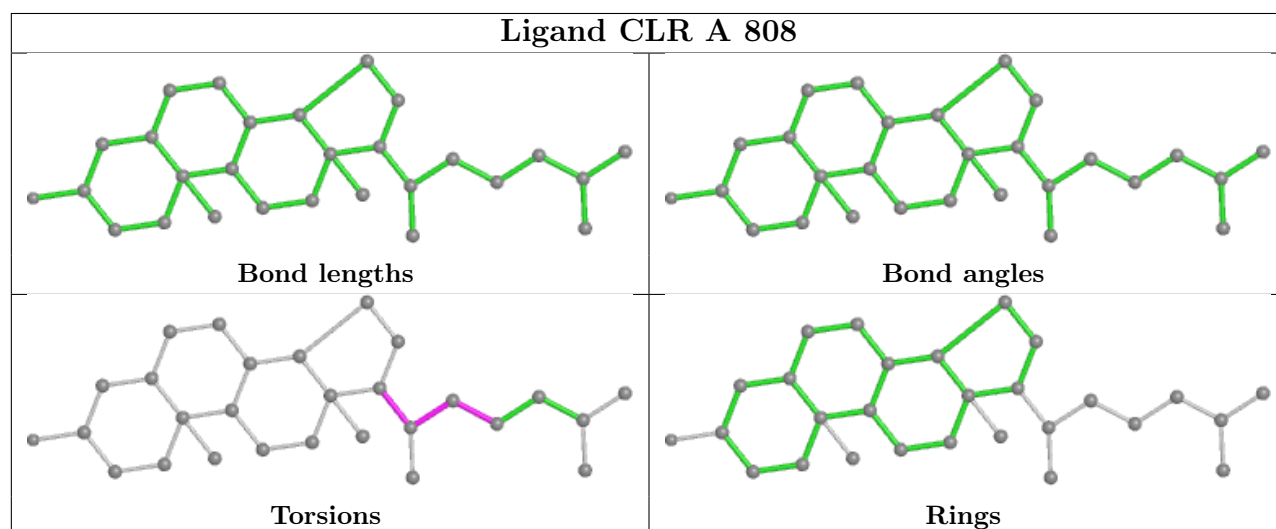
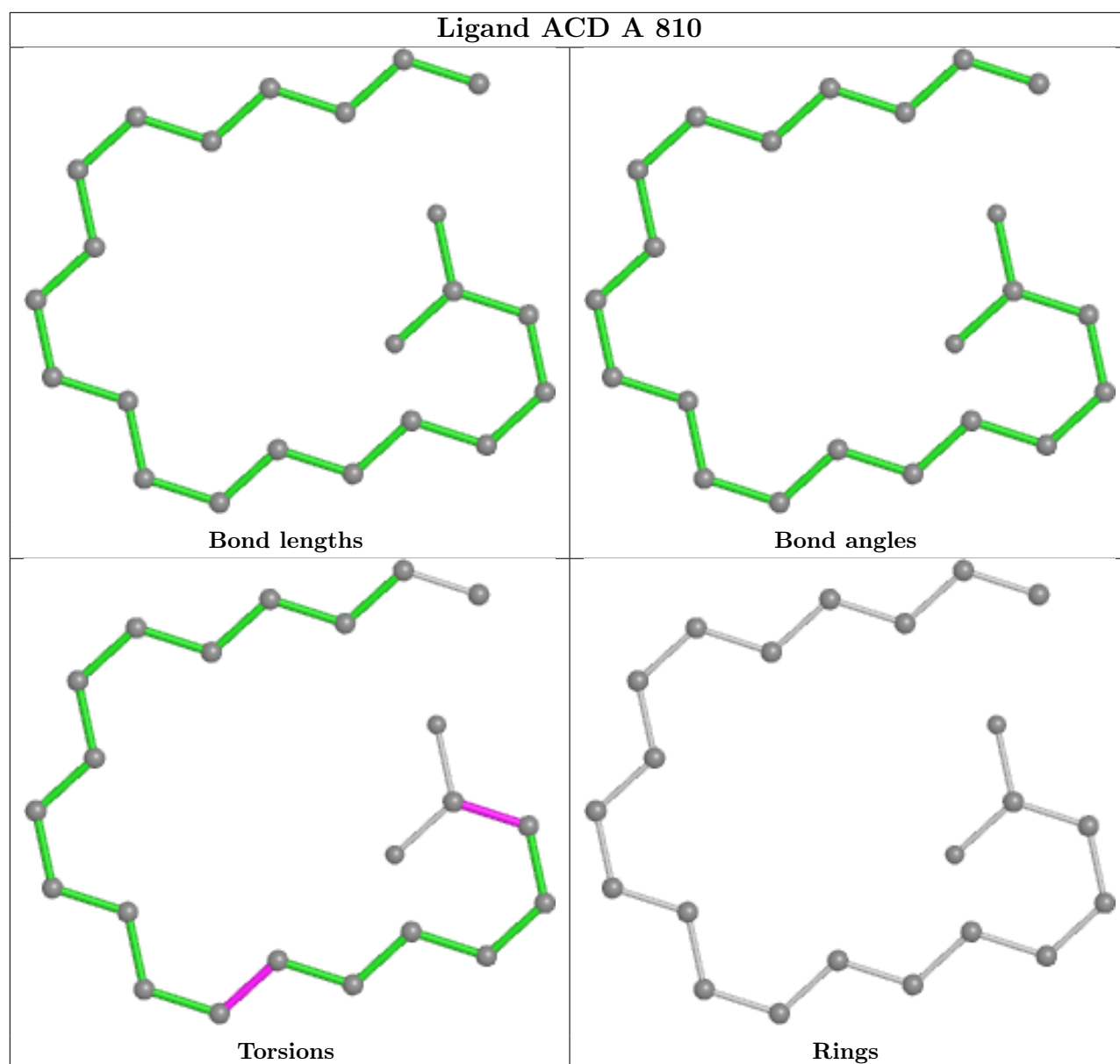
The following is a two-dimensional graphical depiction of Mogul quality analysis of bond lengths, bond angles, torsion angles, and ring geometry for all instances of the Ligand of Interest. In addition, ligands with molecular weight > 250 and outliers as shown on the validation Tables will also be included. For torsion angles, if less than 5% of the Mogul distribution of torsion angles is within 10 degrees of the torsion angle in question, then that torsion angle is considered an outlier. Any bond that is central to one or more torsion angles identified as an outlier by Mogul will be highlighted in the graph. For rings, the root-mean-square deviation (RMSD) between the ring in question and similar rings identified by Mogul is calculated over all ring torsion angles. If the average RMSD is greater than 60 degrees and the minimal RMSD between the ring in question and any Mogul-identified rings is also greater than 60 degrees, then that ring is considered an outlier. The outliers are highlighted in purple. The color gray indicates Mogul did not find sufficient equivalents in the CSD to analyse the geometry.

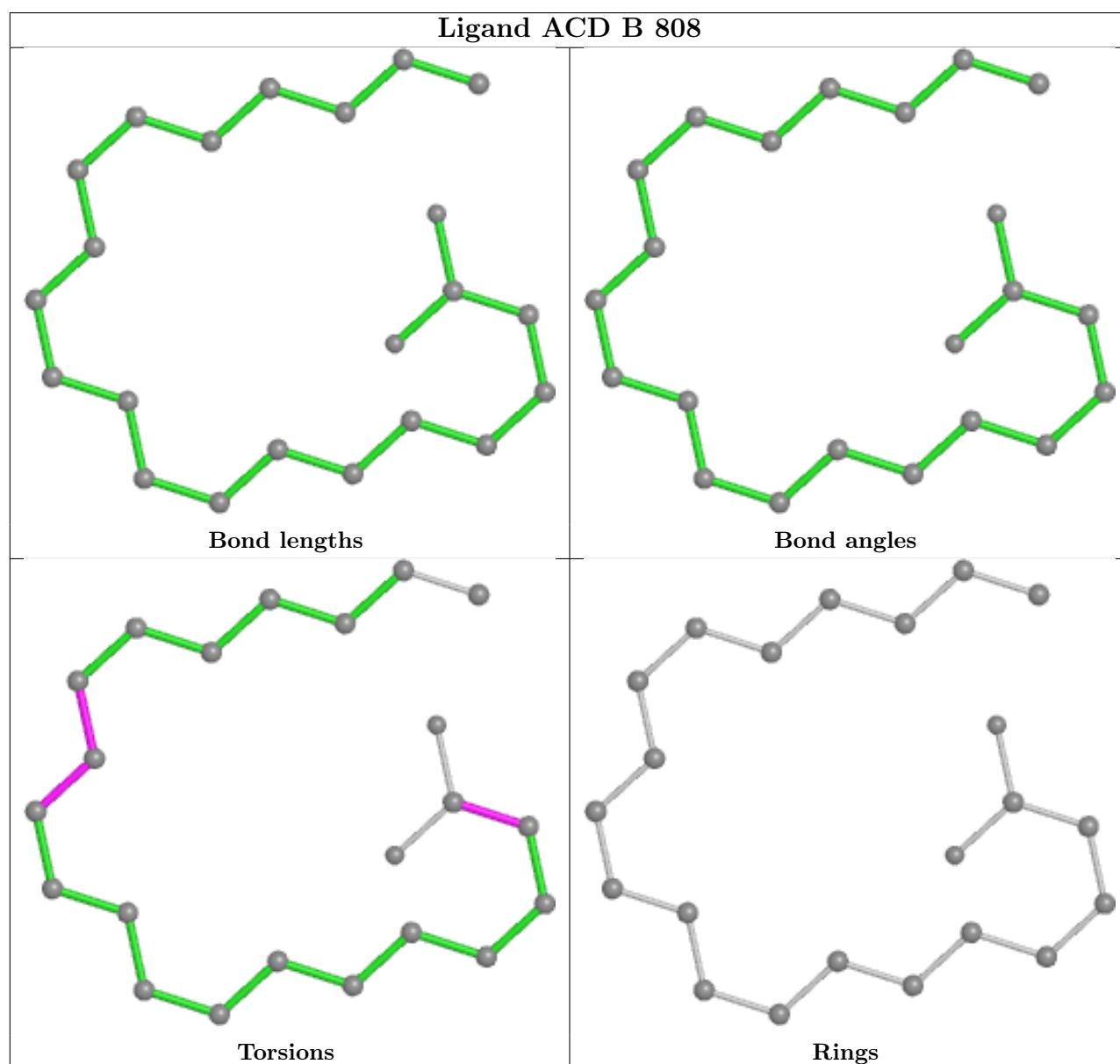
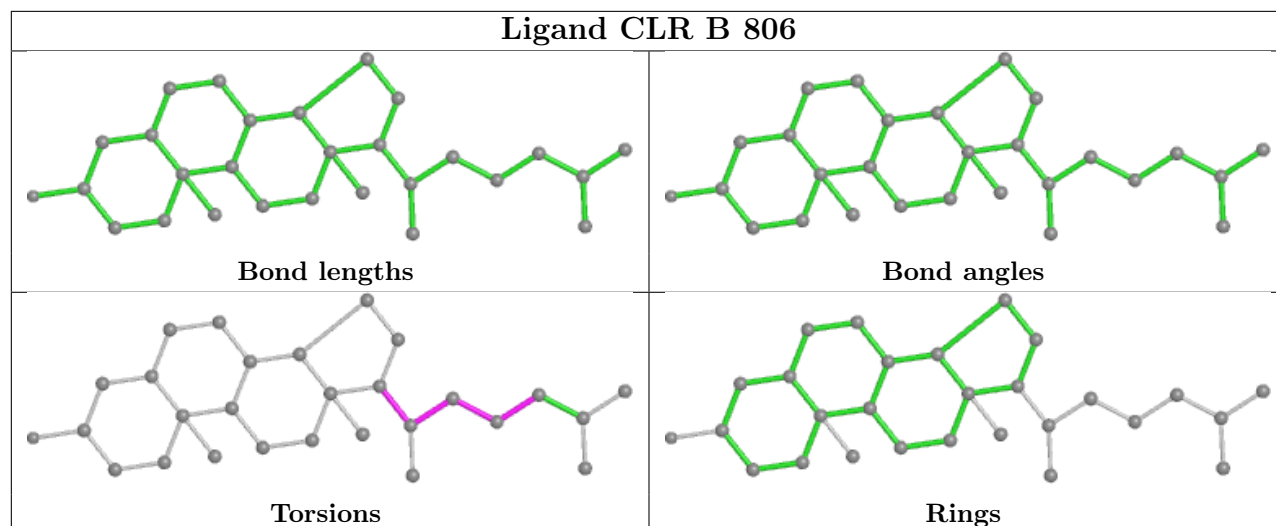


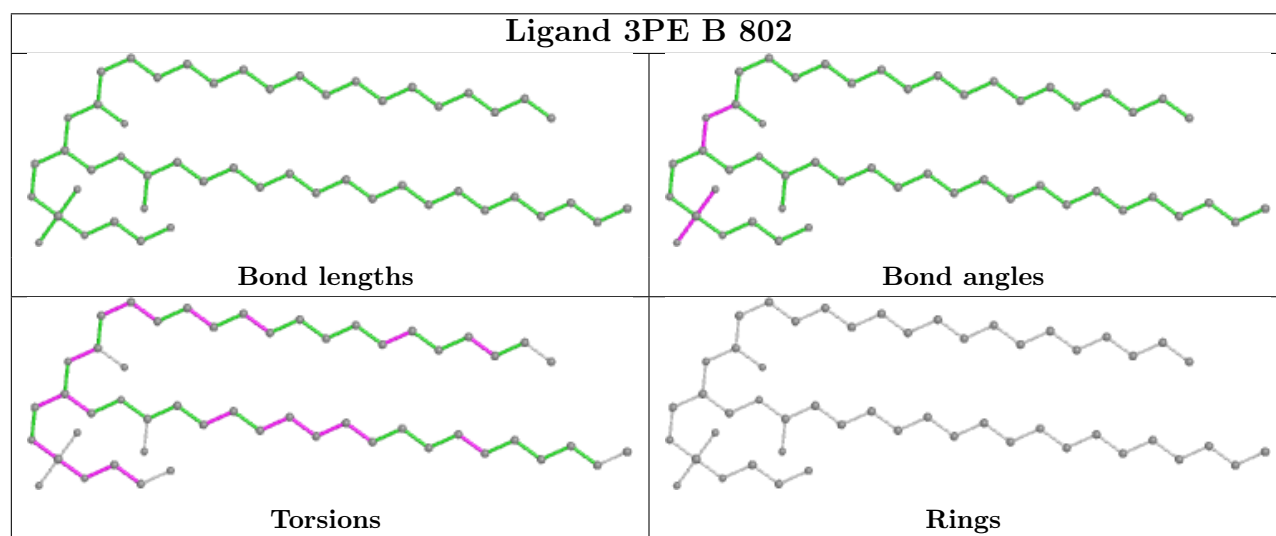
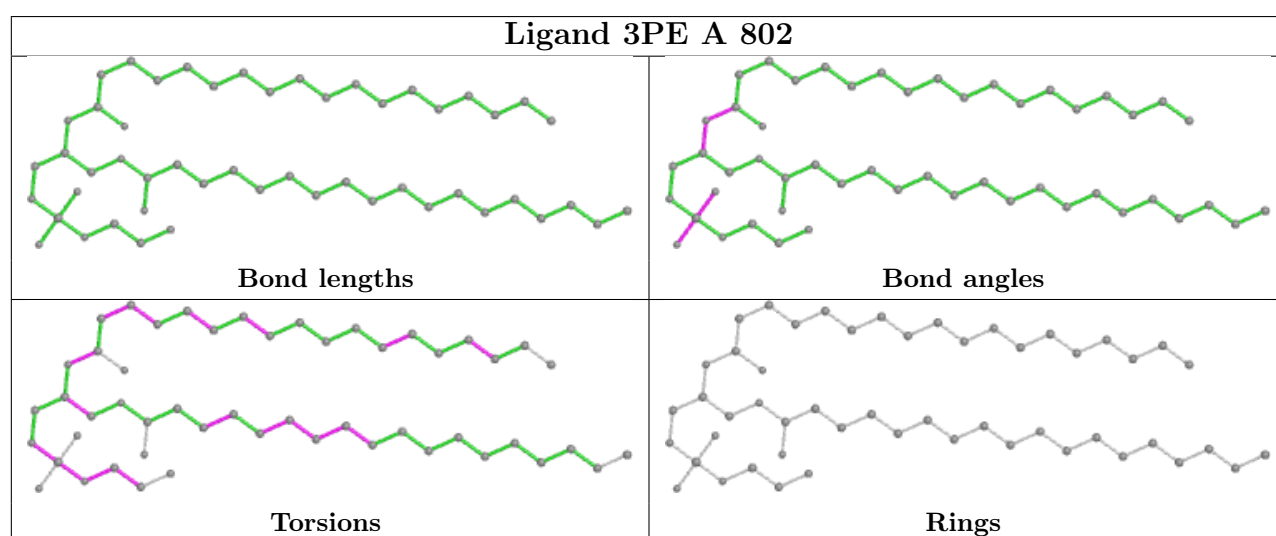
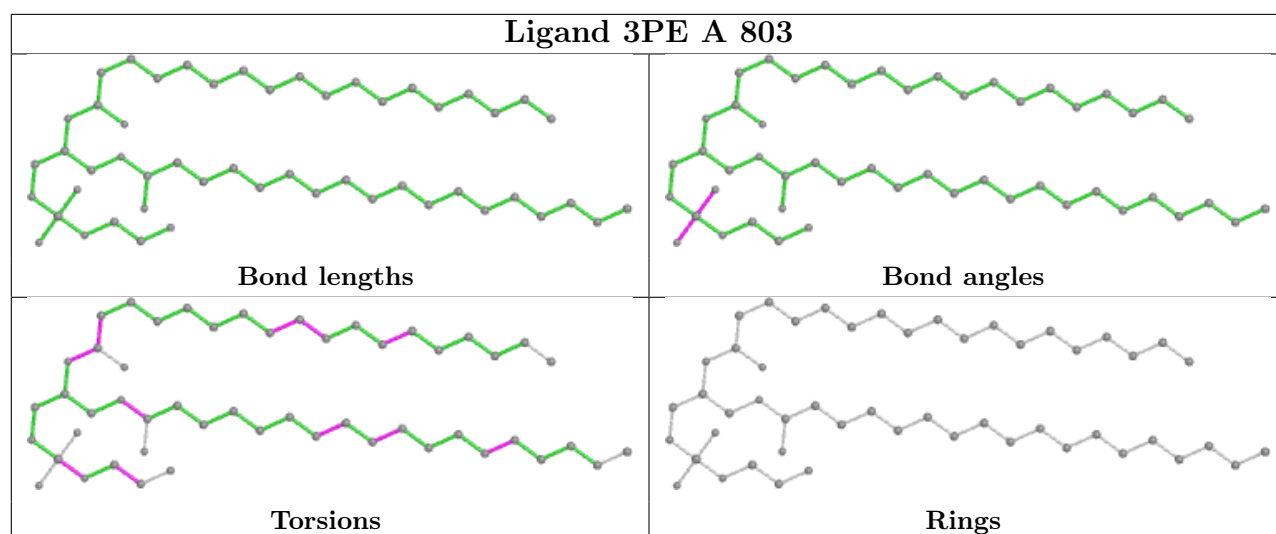


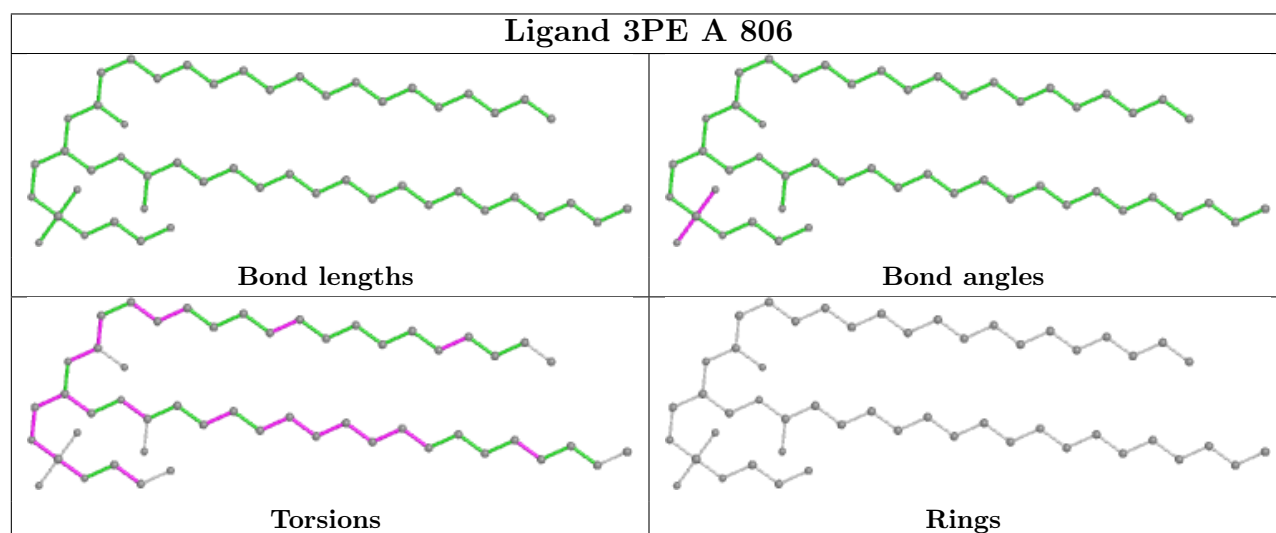
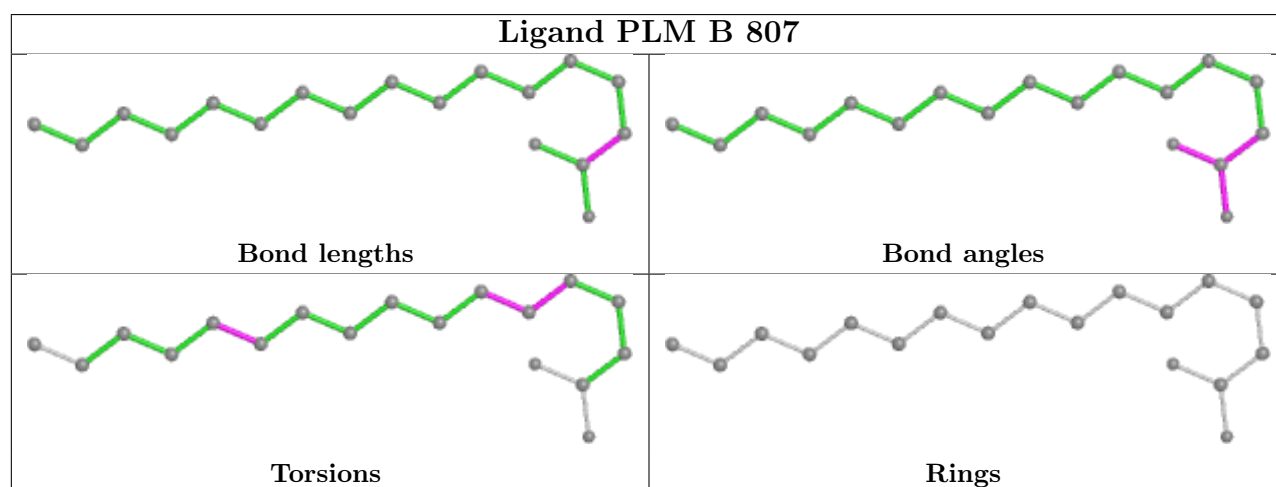
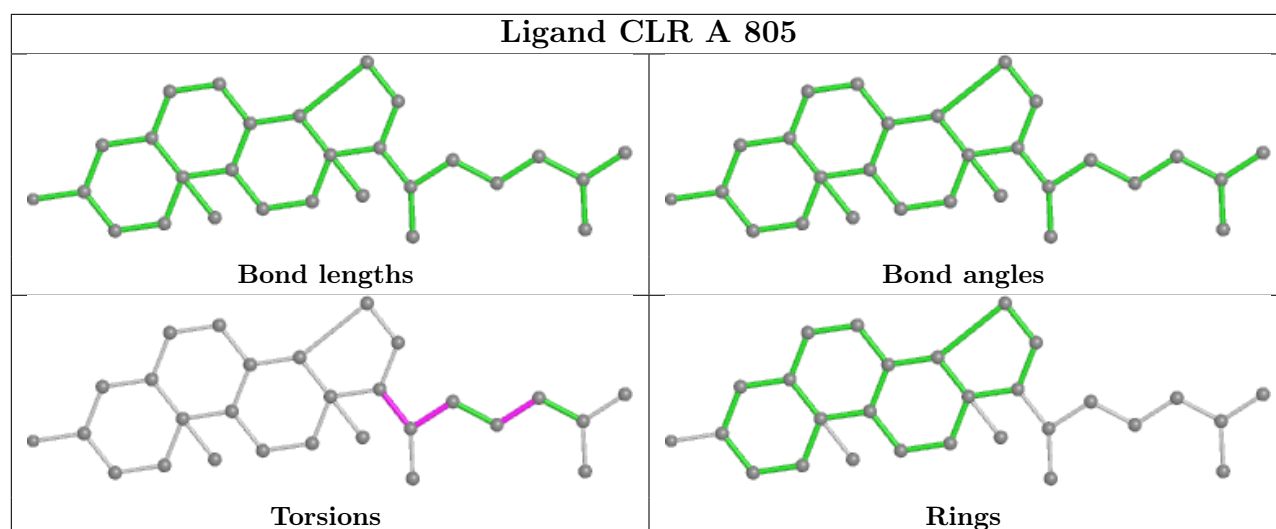


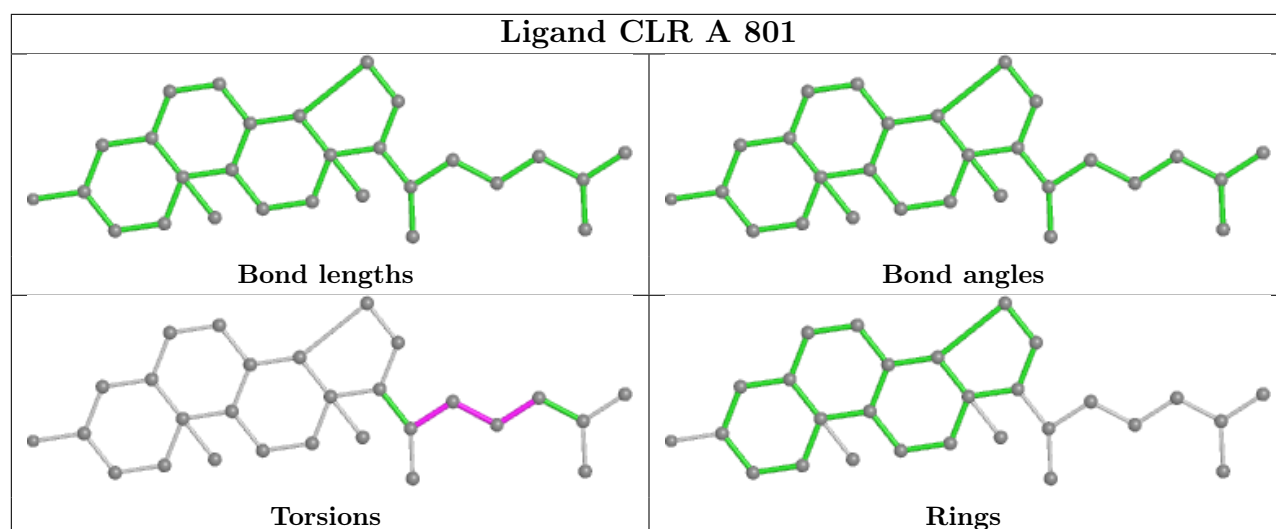












## 5.7 Other polymers [i](#)

There are no such residues in this entry.

## 5.8 Polymer linkage issues [i](#)

There are no chain breaks in this entry.

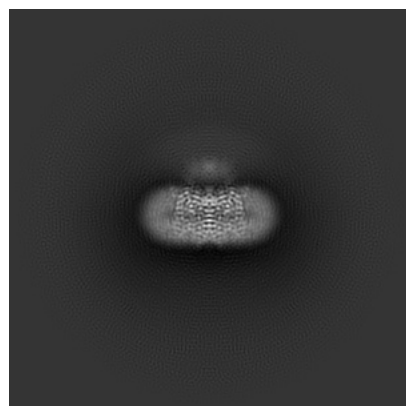
## 6 Map visualisation [i](#)

This section contains visualisations of the EMDB entry EMD-60705. These allow visual inspection of the internal detail of the map and identification of artifacts.

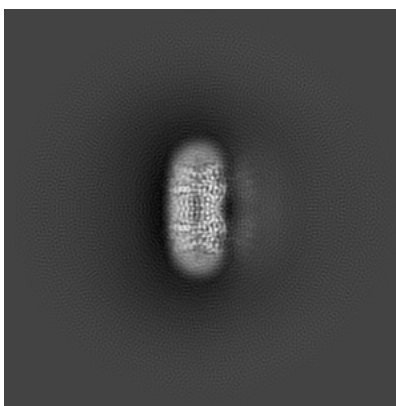
Images derived from a raw map, generated by summing the deposited half-maps, are presented below the corresponding image components of the primary map to allow further visual inspection and comparison with those of the primary map.

### 6.1 Orthogonal projections [i](#)

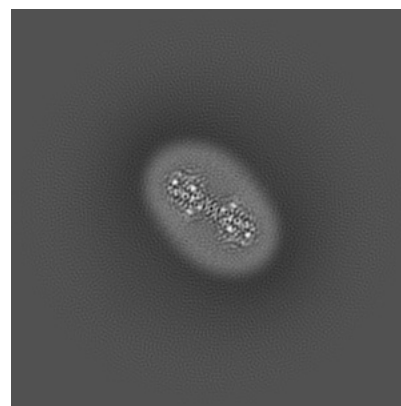
#### 6.1.1 Primary map



X

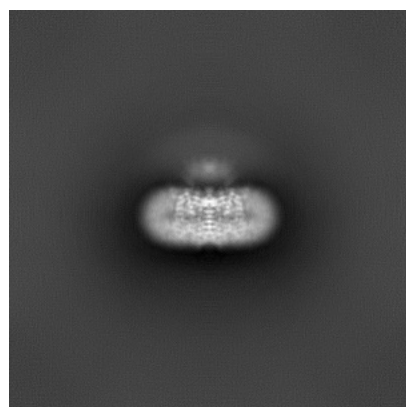


Y

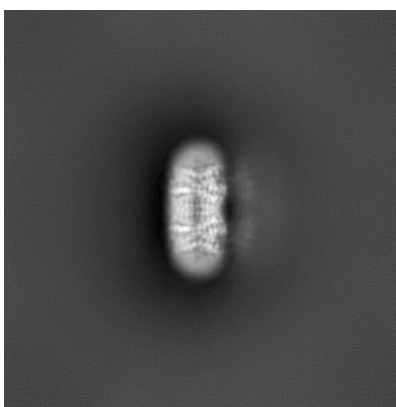


Z

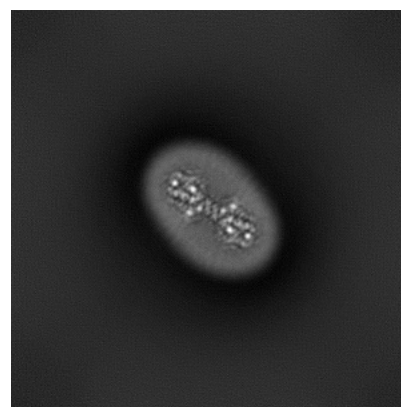
#### 6.1.2 Raw map



X



Y



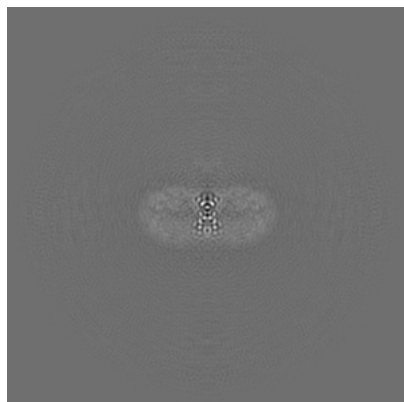
Z

The images above show the map projected in three orthogonal directions.

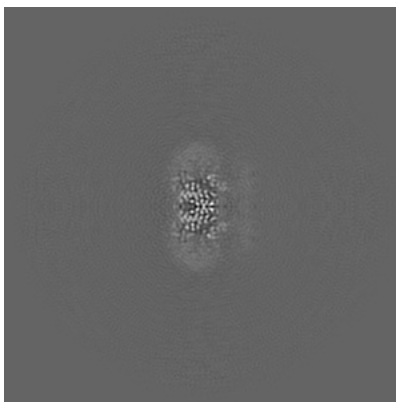


## 6.2 Central slices [i](#)

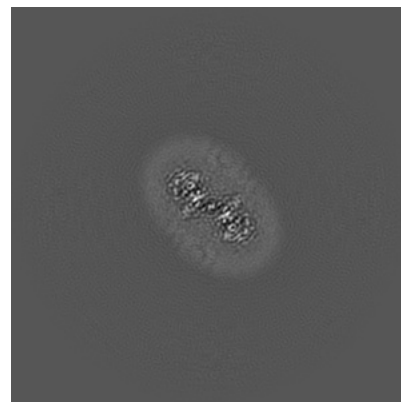
### 6.2.1 Primary map



X Index: 240

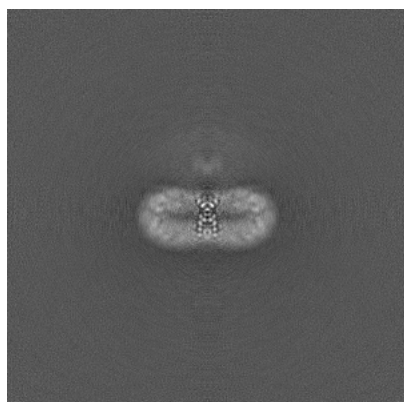


Y Index: 240

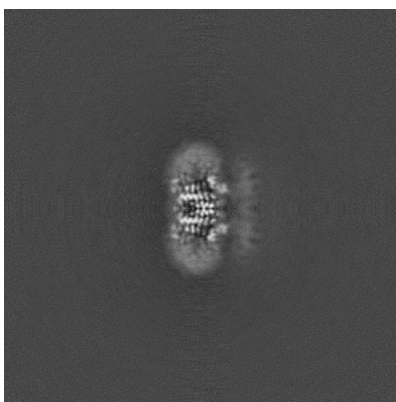


Z Index: 240

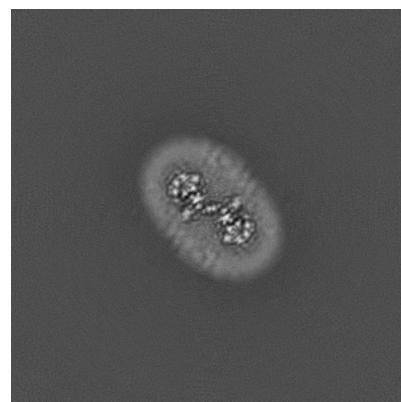
### 6.2.2 Raw map



X Index: 240



Y Index: 240

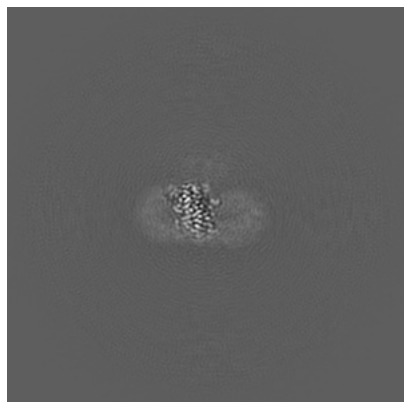


Z Index: 240

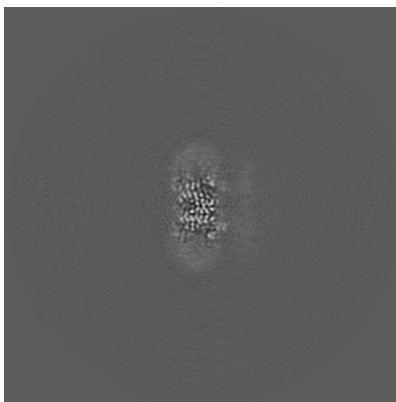
The images above show central slices of the map in three orthogonal directions.

## 6.3 Largest variance slices [i](#)

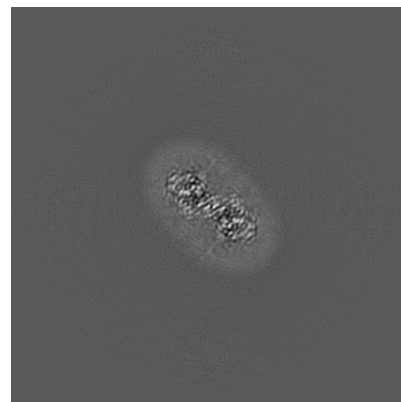
### 6.3.1 Primary map



X Index: 262

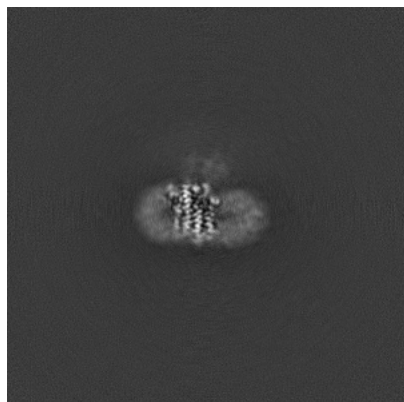


Y Index: 241

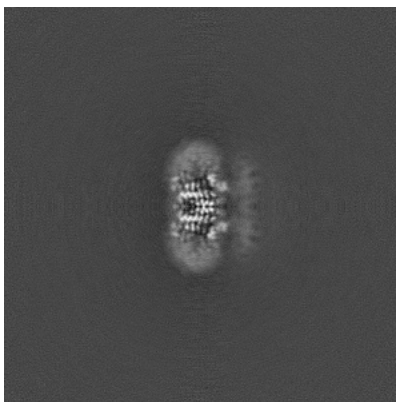


Z Index: 249

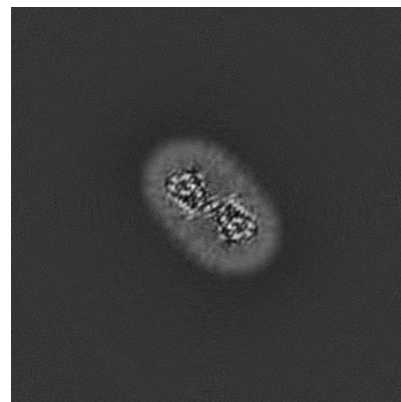
### 6.3.2 Raw map



X Index: 263



Y Index: 240

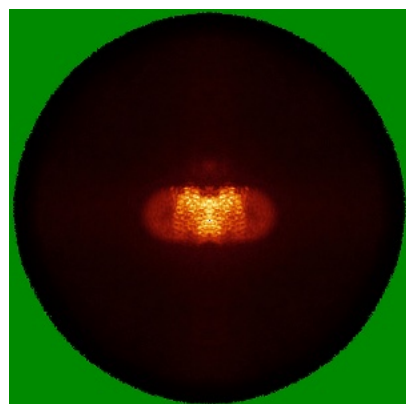


Z Index: 248

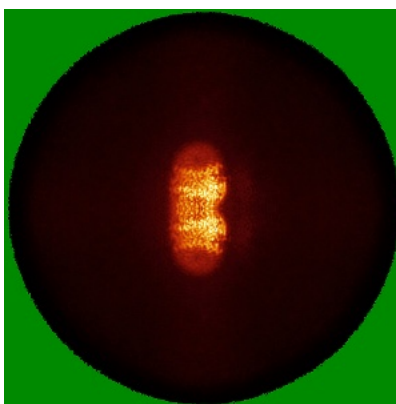
The images above show the largest variance slices of the map in three orthogonal directions.

## 6.4 Orthogonal standard-deviation projections (False-color) [i](#)

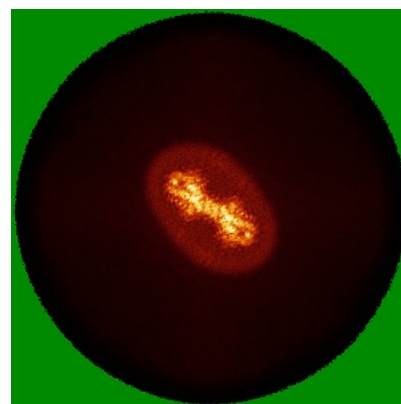
### 6.4.1 Primary map



X

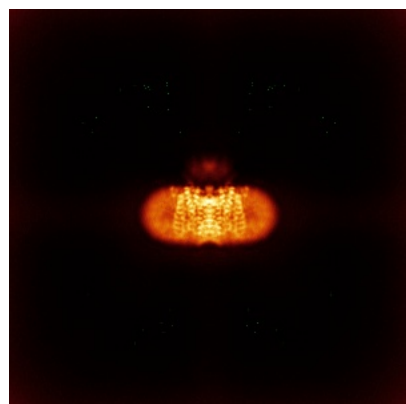


Y

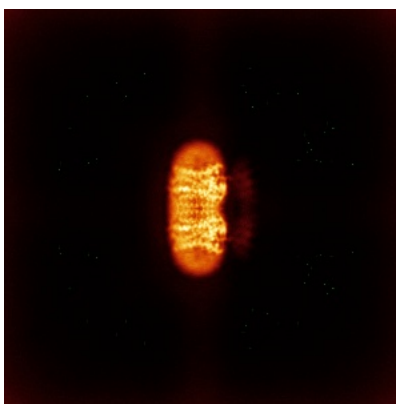


Z

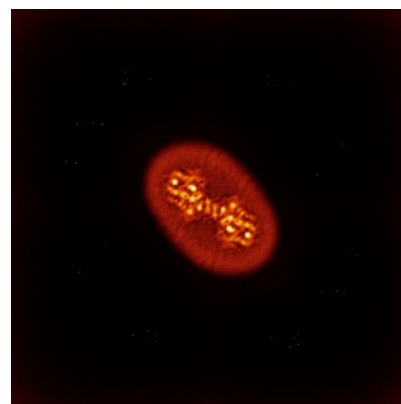
### 6.4.2 Raw map



X



Y

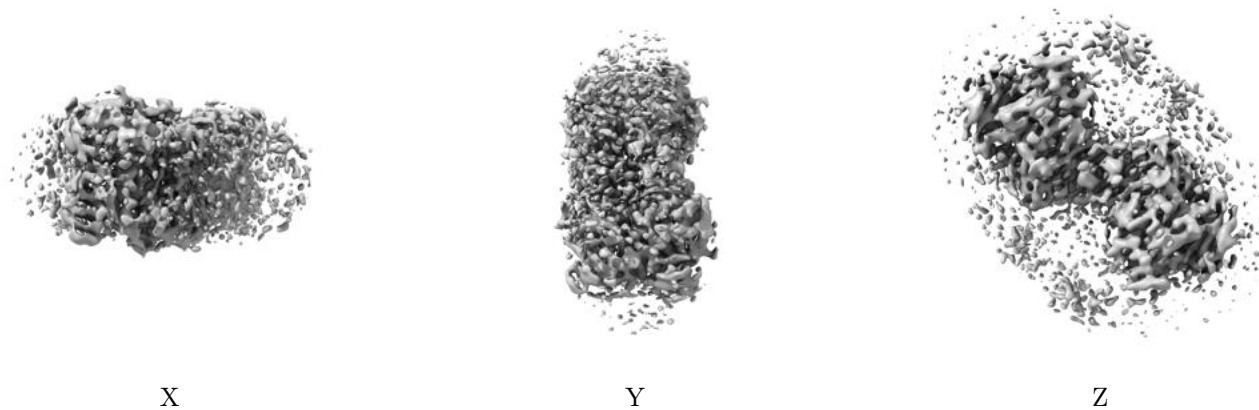


Z

The images above show the map standard deviation projections with false color in three orthogonal directions. Minimum values are shown in green, max in blue, and dark to light orange shades represent small to large values respectively.

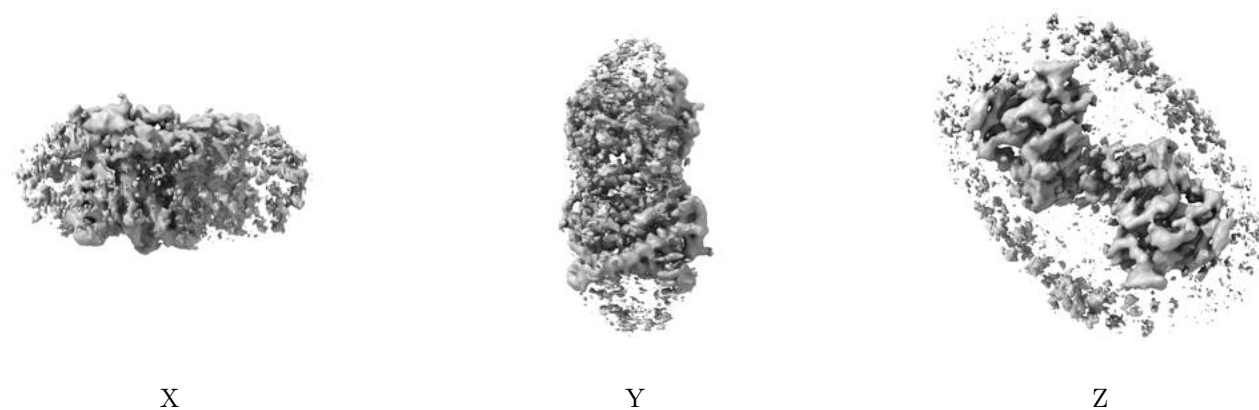
## 6.5 Orthogonal surface views [i](#)

### 6.5.1 Primary map



The images above show the 3D surface view of the map at the recommended contour level 0.135. These images, in conjunction with the slice images, may facilitate assessment of whether an appropriate contour level has been provided.

### 6.5.2 Raw map



These images show the 3D surface of the raw map. The raw map's contour level was selected so that its surface encloses the same volume as the primary map does at its recommended contour level.

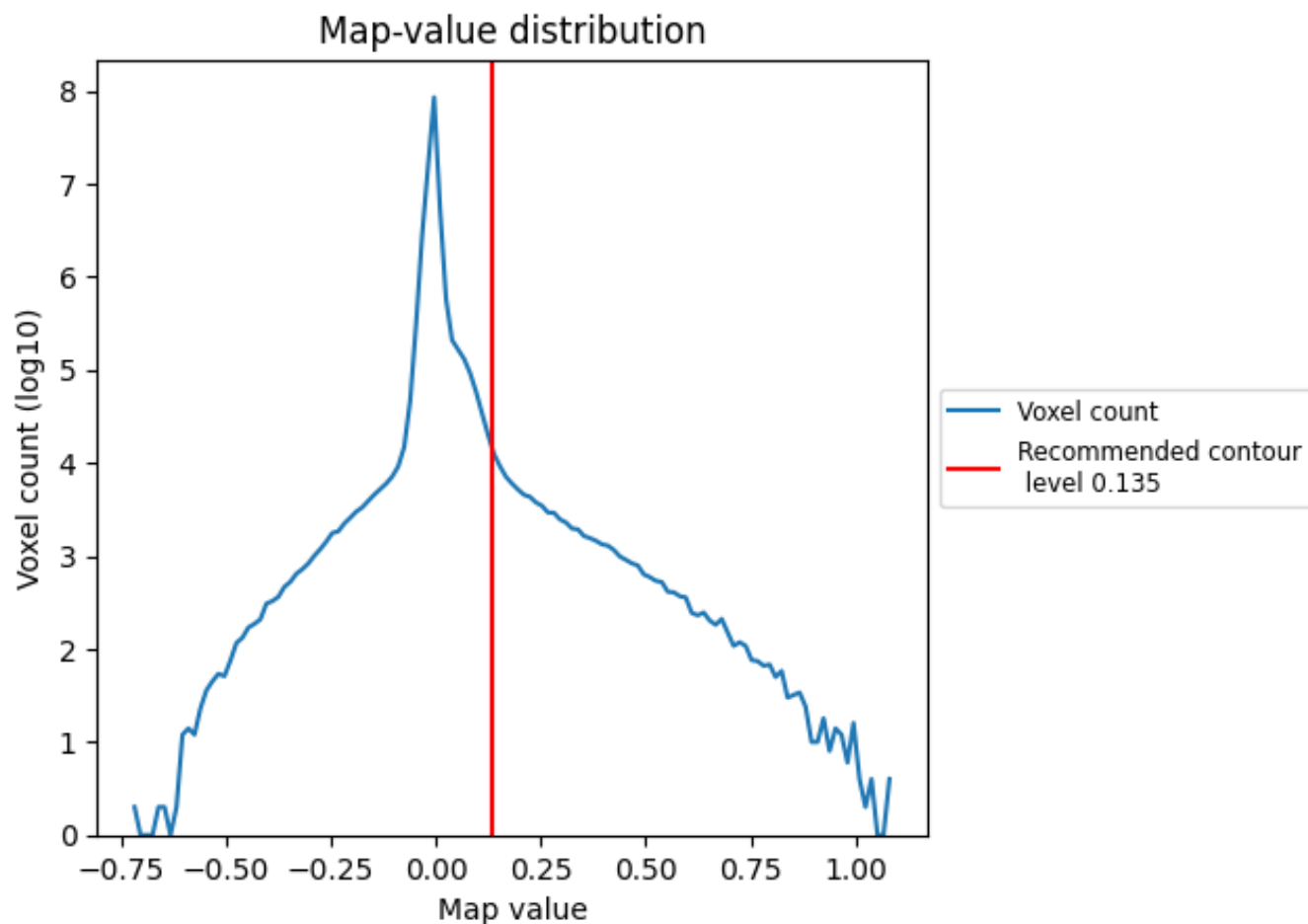
## 6.6 Mask visualisation [i](#)

This section was not generated. No masks/segmentation were deposited.

## 7 Map analysis [i](#)

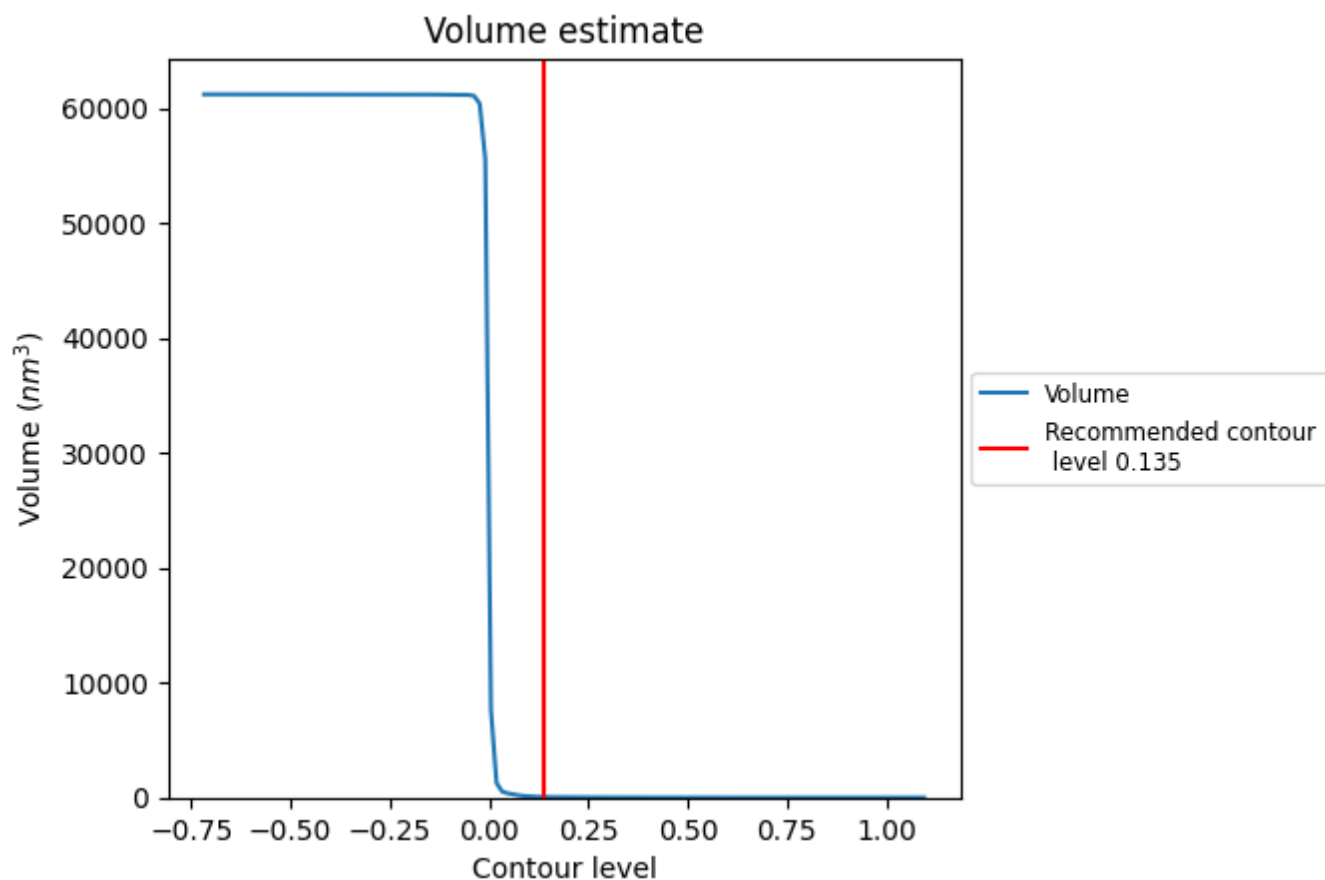
This section contains the results of statistical analysis of the map.

### 7.1 Map-value distribution [i](#)



The map-value distribution is plotted in 128 intervals along the x-axis. The y-axis is logarithmic. A spike in this graph at zero usually indicates that the volume has been masked.

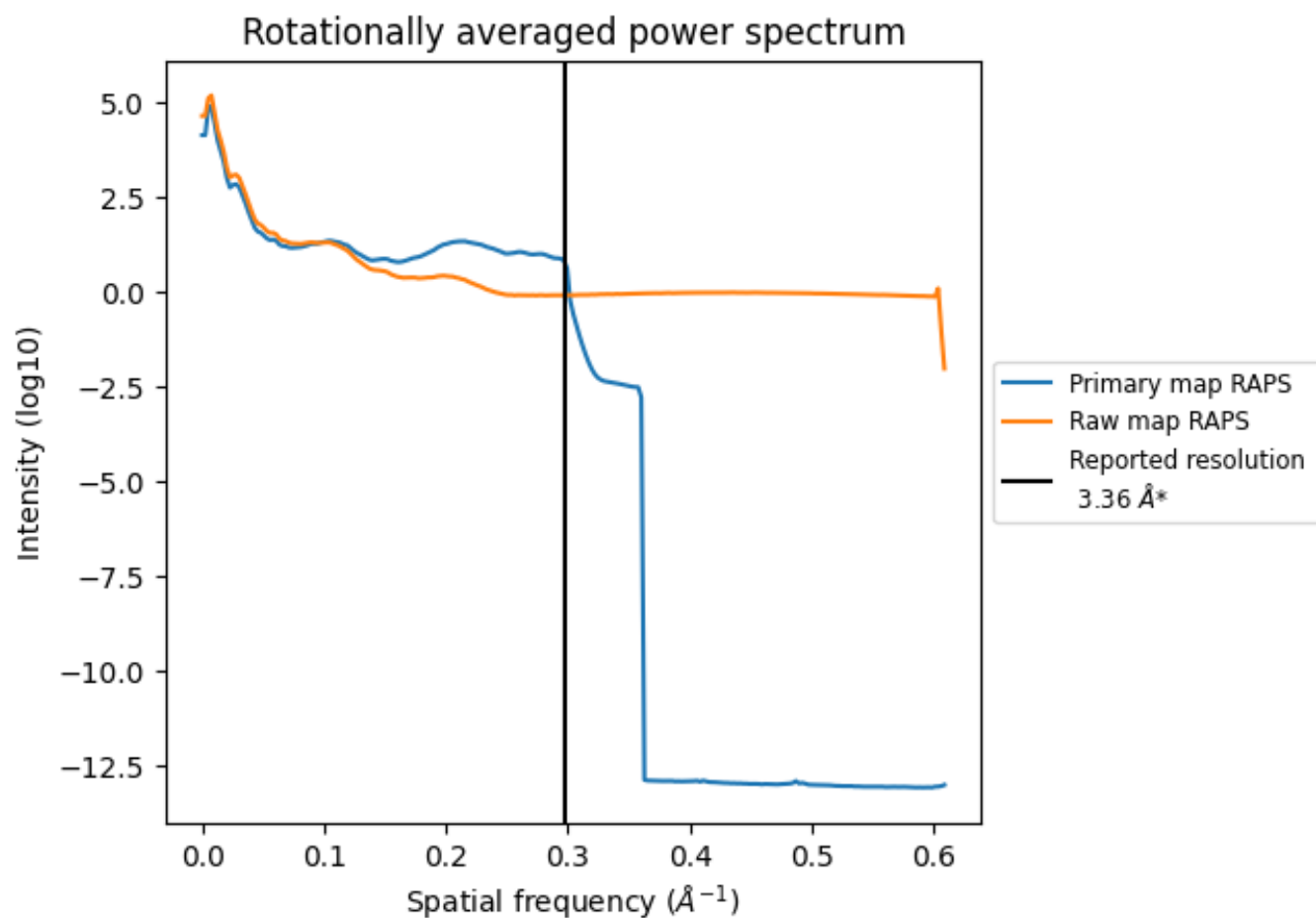
## 7.2 Volume estimate [i](#)



The volume at the recommended contour level is 52 nm<sup>3</sup>; this corresponds to an approximate mass of 47 kDa.

The volume estimate graph shows how the enclosed volume varies with the contour level. The recommended contour level is shown as a vertical line and the intersection between the line and the curve gives the volume of the enclosed surface at the given level.

### 7.3 Rotationally averaged power spectrum ⓘ

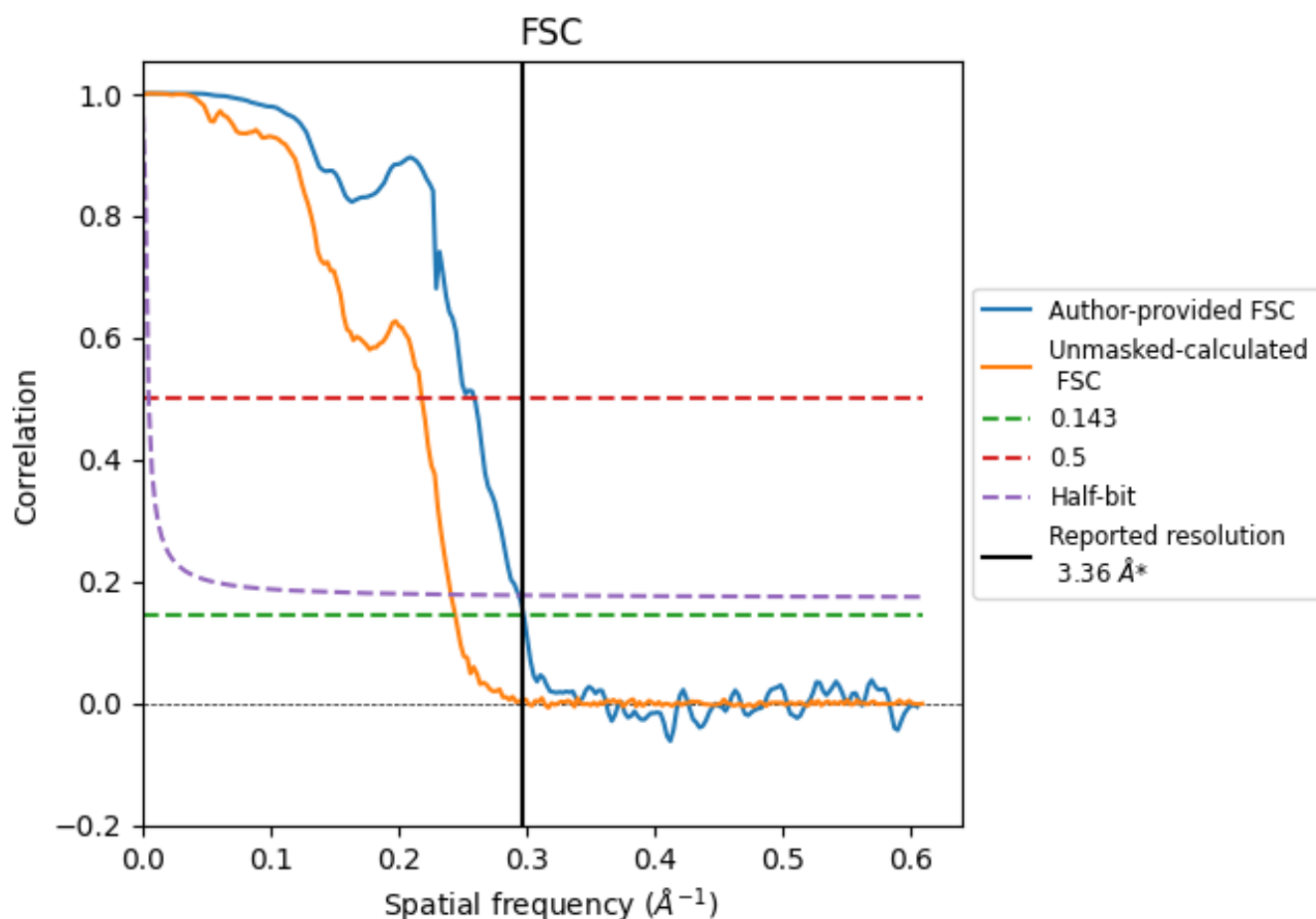


\*Reported resolution corresponds to spatial frequency of 0.298 Å<sup>-1</sup>

## 8 Fourier-Shell correlation [i](#)

Fourier-Shell Correlation (FSC) is the most commonly used method to estimate the resolution of single-particle and subtomogram-averaged maps. The shape of the curve depends on the imposed symmetry, mask and whether or not the two 3D reconstructions used were processed from a common reference. The reported resolution is shown as a black line. A curve is displayed for the half-bit criterion in addition to lines showing the 0.143 gold standard cut-off and 0.5 cut-off.

### 8.1 FSC [i](#)



\*Reported resolution corresponds to spatial frequency of 0.298 Å<sup>-1</sup>



## 8.2 Resolution estimates

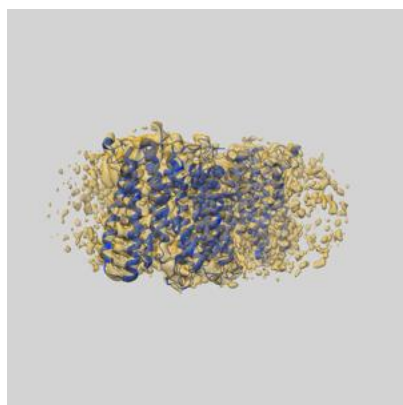
Resolution estimate (Å)	Estimation criterion (FSC cut-off)		
	0.143	0.5	Half-bit
Reported by author	3.36	-	-
Author-provided FSC curve	3.36	3.86	3.40
Unmasked-calculated*	4.09	4.58	4.15

\*Resolution estimate based on FSC curve calculated by comparison of deposited half-maps. The value from deposited half-maps intersecting FSC 0.143 CUT-OFF 4.09 differs from the reported value 3.36 by more than 10 %

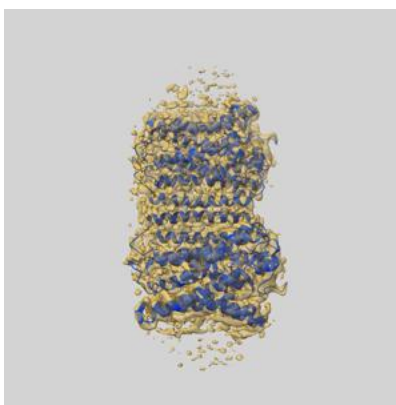
## 9 Map-model fit [i](#)

This section contains information regarding the fit between EMDB map EMD-60705 and PDB model 9INF. Per-residue inclusion information can be found in [section 3](#) on [page 8](#).

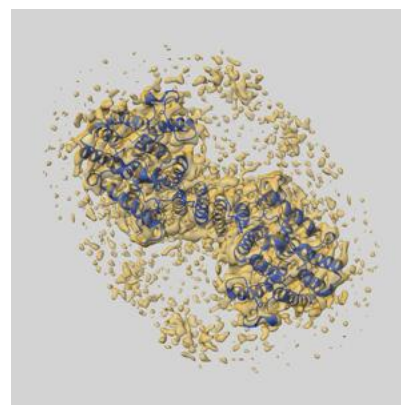
### 9.1 Map-model overlay [i](#)



X



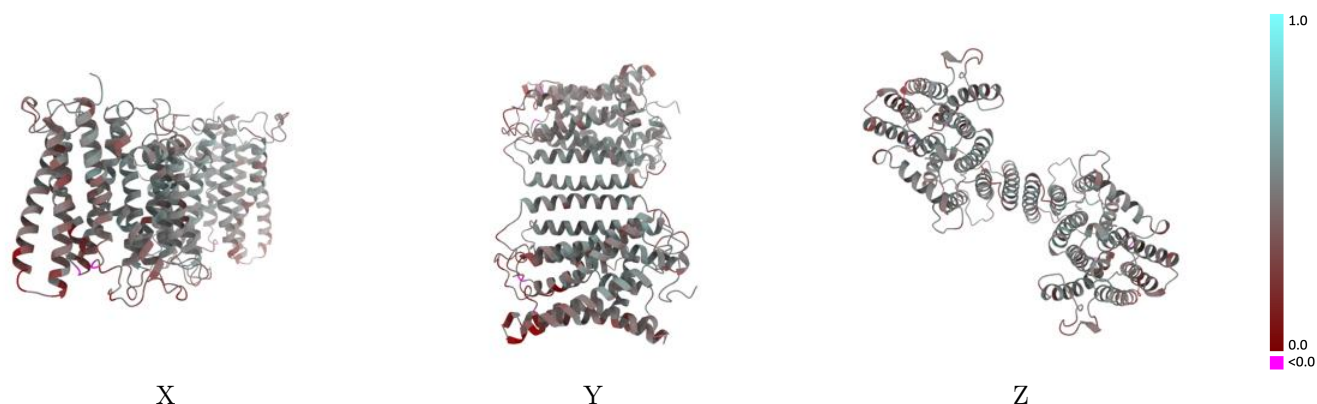
Y



Z

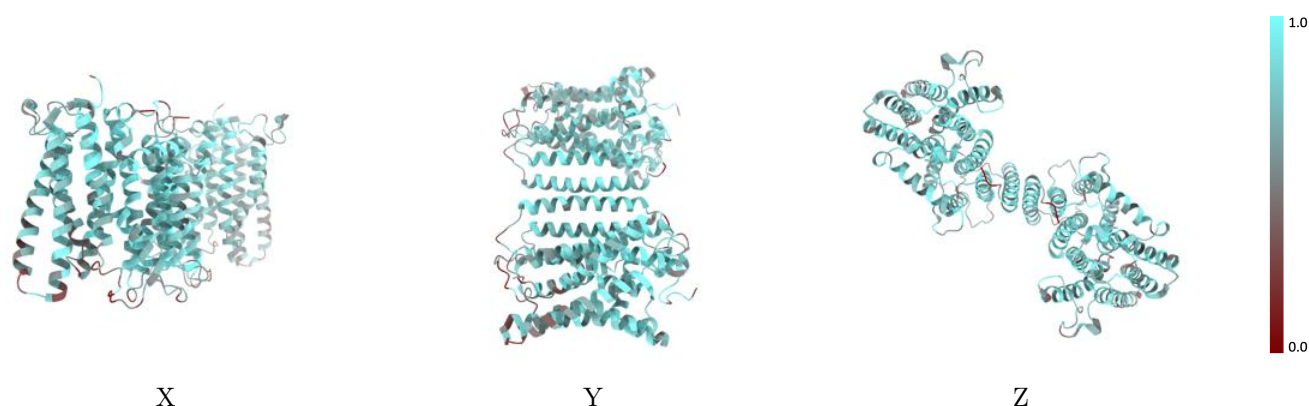
The images above show the 3D surface view of the map at the recommended contour level 0.135 at 50% transparency in yellow overlaid with a ribbon representation of the model coloured in blue. These images allow for the visual assessment of the quality of fit between the atomic model and the map.

## 9.2 Q-score mapped to coordinate model [i](#)



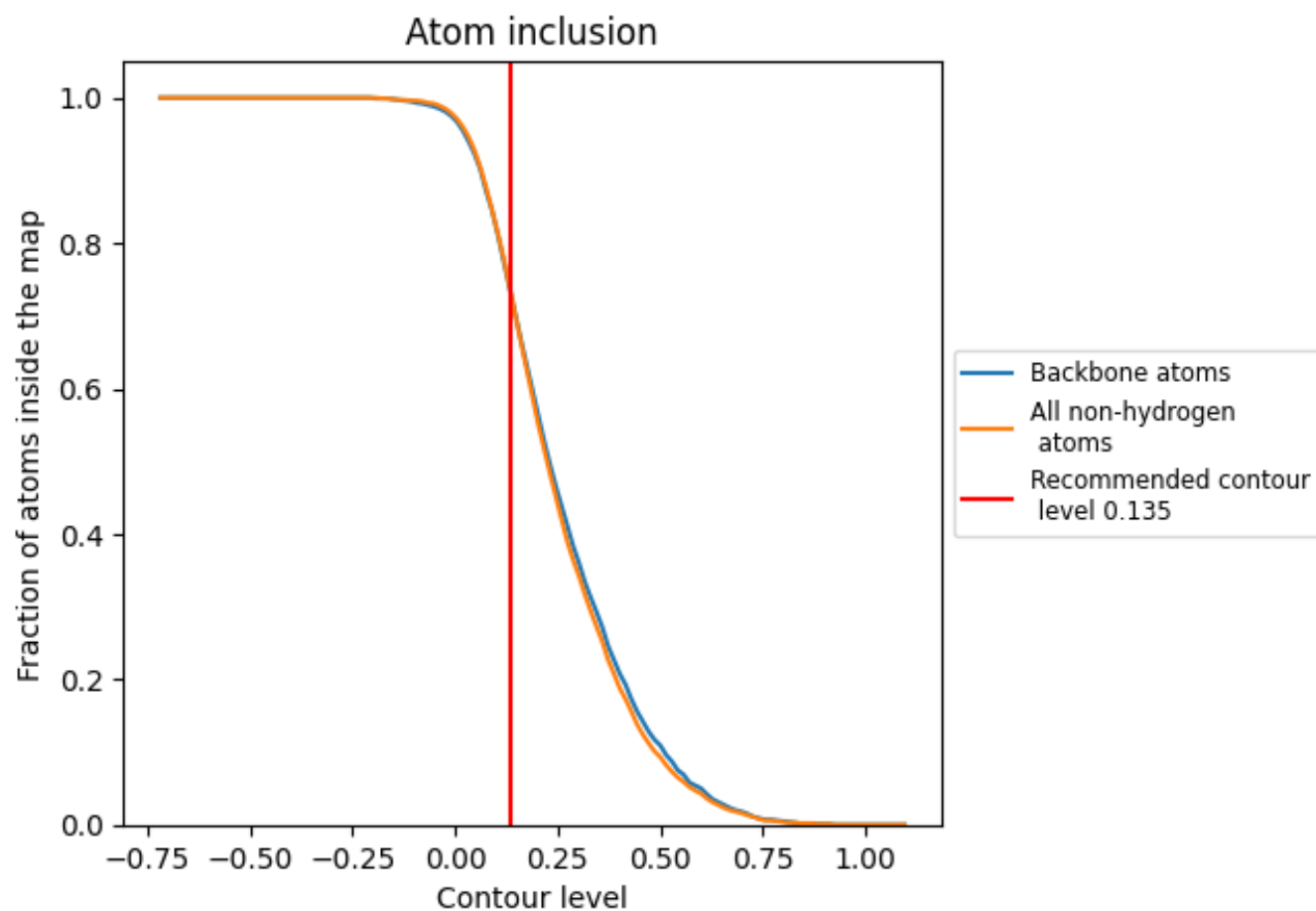
The images above show the model with each residue coloured according to its Q-score. This shows their resolvability in the map with higher Q-score values reflecting better resolvability. Please note: Q-score is calculating the resolvability of atoms, and thus high values are only expected at resolutions at which atoms can be resolved. Low Q-score values may therefore be expected for many entries.

## 9.3 Atom inclusion mapped to coordinate model [i](#)



The images above show the model with each residue coloured according to its atom inclusion. This shows to what extent they are inside the map at the recommended contour level (0.135).

## 9.4 Atom inclusion [i](#)



At the recommended contour level, 73% of all backbone atoms, 73% of all non-hydrogen atoms, are inside the map.

9.5 Map-model fit summary ⓘ

The table lists the average atom inclusion at the recommended contour level (0.135) and Q-score for the entire model and for each chain.

Chain	Atom inclusion	Q-score
All	<div></div> 0.7340	<div></div> 0.4410
A	<div></div> 0.7370	<div></div> 0.4420
B	<div></div> 0.7400	<div></div> 0.4400

