



## Full wwPDB EM Validation Report ⓘ

Oct 27, 2024 – 12:37 PM JST

PDB ID : 6J8G  
EMDB ID : EMD-9781  
Title : Structure of human voltage-gated sodium channel Nav1.7 in complex with auxiliary beta subunits, huwentoxin-IV and saxitoxin (Y1755 up)  
Authors : Shen, H.; Liu, D.; Lei, J.; Yan, N.  
Deposited on : 2019-01-19  
Resolution : 3.20 Å(reported)

This is a Full wwPDB EM Validation Report for a publicly released PDB entry.

We welcome your comments at [validation@mail.wwpdb.org](mailto:validation@mail.wwpdb.org)

A user guide is available at

<https://www.wwpdb.org/validation/2017/EMValidationReportHelp>  
with specific help available everywhere you see the ⓘ symbol.

The types of validation reports are described at

<http://www.wwpdb.org/validation/2017/FAQs#types>.

---

The following versions of software and data (see [references ⓘ](#)) were used in the production of this report:

EMDB validation analysis : 0.0.1.dev113  
Mogul : 1.8.5 (274361), CSD as541be (2020)  
MolProbity : 4.02b-467  
buster-report : 1.1.7 (2018)  
Percentile statistics : 20231227.v01 (using entries in the PDB archive December 27th 2023)  
MapQ : 1.9.13  
Ideal geometry (proteins) : Engh & Huber (2001)  
Ideal geometry (DNA, RNA) : Parkinson et al. (1996)  
Validation Pipeline (wwPDB-VP) : 2.39

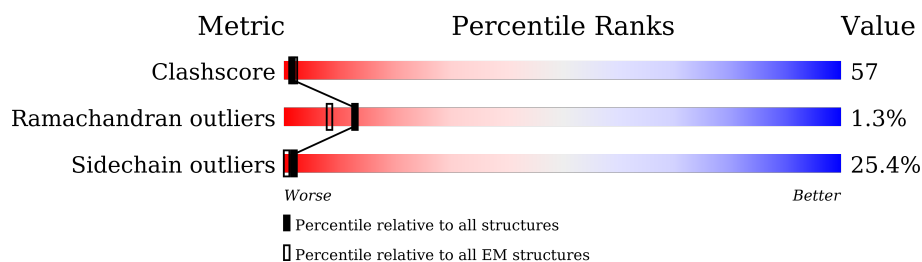
# 1 Overall quality at a glance

The following experimental techniques were used to determine the structure:

*ELECTRON MICROSCOPY*

The reported resolution of this entry is 3.20 Å.

Percentile scores (ranging between 0-100) for global validation metrics of the entry are shown in the following graphic. The table shows the number of entries on which the scores are based.



Metric	Whole archive (#Entries)	EM structures (#Entries)
Clashscore	210492	15764
Ramachandran outliers	207382	16835
Sidechain outliers	206894	16415

The table below summarises the geometric issues observed across the polymeric chains and their fit to the map. The red, orange, yellow and green segments of the bar indicate the fraction of residues that contain outliers for  $\geq 3$ , 2, 1 and 0 types of geometric quality criteria respectively. A grey segment represents the fraction of residues that are not modelled. The numeric value for each fraction is indicated below the corresponding segment, with a dot representing fractions  $\leq 5\%$ . The upper red bar (where present) indicates the fraction of residues that have poor fit to the EM map (all-atom inclusion  $< 40\%$ ). The numeric value is given above the bar.

Mol	Chain	Length	Quality of chain
1	C	215	
2	A	2031	
3	B	218	
4	D	2	
4	E	2	

## 2 Entry composition

There are 6 unique types of molecules in this entry. The entry contains 11763 atoms, of which 0 are hydrogens and 0 are deuteriums.

In the tables below, the AltConf column contains the number of residues with at least one atom in alternate conformation and the Trace column contains the number of residues modelled with at most 2 atoms.

- Molecule 1 is a protein called Sodium channel subunit beta-2.

Mol	Chain	Residues	Atoms					AltConf	Trace
1	C	120	Total	C	N	O	S	0	0
			980	614	173	182	11		

- Molecule 2 is a protein called Sodium channel protein type 9 subunit alpha.

Mol	Chain	Residues	Atoms					AltConf	Trace
2	A	1140	Total	C	N	O	S	0	0
			9192	6110	1438	1568	76		

There are 44 discrepancies between the modelled and reference sequences:

Chain	Residue	Modelled	Actual	Comment	Reference
A	-42	MET	-	expression tag	UNP Q15858
A	-41	ALA	-	expression tag	UNP Q15858
A	-40	SER	-	expression tag	UNP Q15858
A	-39	TRP	-	expression tag	UNP Q15858
A	-38	SER	-	expression tag	UNP Q15858
A	-37	HIS	-	expression tag	UNP Q15858
A	-36	PRO	-	expression tag	UNP Q15858
A	-35	GLN	-	expression tag	UNP Q15858
A	-34	PHE	-	expression tag	UNP Q15858
A	-33	GLU	-	expression tag	UNP Q15858
A	-32	LYS	-	expression tag	UNP Q15858
A	-31	GLY	-	expression tag	UNP Q15858
A	-30	GLY	-	expression tag	UNP Q15858
A	-29	GLY	-	expression tag	UNP Q15858
A	-28	ALA	-	expression tag	UNP Q15858
A	-27	ARG	-	expression tag	UNP Q15858
A	-26	GLY	-	expression tag	UNP Q15858
A	-25	GLY	-	expression tag	UNP Q15858
A	-24	SER	-	expression tag	UNP Q15858
A	-23	GLY	-	expression tag	UNP Q15858
A	-22	GLY	-	expression tag	UNP Q15858

*Continued on next page...*

Continued from previous page...

Chain	Residue	Modelled	Actual	Comment	Reference
A	-21	GLY	-	expression tag	UNP Q15858
A	-20	SER	-	expression tag	UNP Q15858
A	-19	TRP	-	expression tag	UNP Q15858
A	-18	SER	-	expression tag	UNP Q15858
A	-17	HIS	-	expression tag	UNP Q15858
A	-16	PRO	-	expression tag	UNP Q15858
A	-15	GLN	-	expression tag	UNP Q15858
A	-14	PHE	-	expression tag	UNP Q15858
A	-13	GLU	-	expression tag	UNP Q15858
A	-12	LYS	-	expression tag	UNP Q15858
A	-11	GLY	-	expression tag	UNP Q15858
A	-10	PHE	-	expression tag	UNP Q15858
A	-9	ASP	-	expression tag	UNP Q15858
A	-8	TYR	-	expression tag	UNP Q15858
A	-7	LYS	-	expression tag	UNP Q15858
A	-6	ASP	-	expression tag	UNP Q15858
A	-5	ASP	-	expression tag	UNP Q15858
A	-4	ASP	-	expression tag	UNP Q15858
A	-3	ASP	-	expression tag	UNP Q15858
A	-2	LYS	-	expression tag	UNP Q15858
A	-1	GLY	-	expression tag	UNP Q15858
A	0	THR	-	expression tag	UNP Q15858
A	406	LYS	GLU	variant	UNP Q15858

- Molecule 3 is a protein called Sodium channel subunit beta-1.

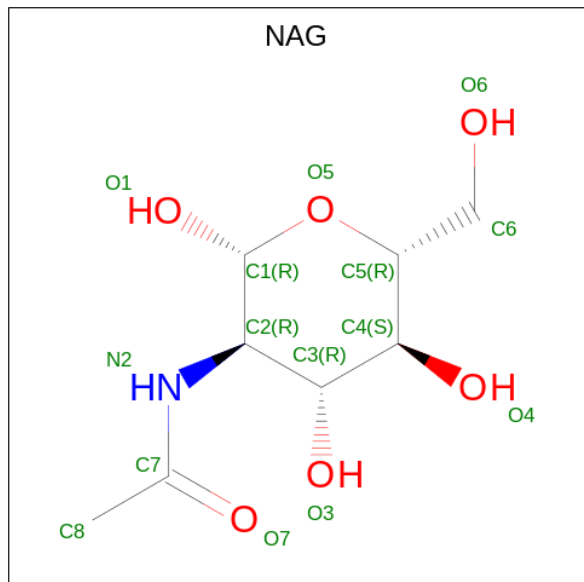
Mol	Chain	Residues	Atoms					AltConf	Trace
3	B	173	Total	C	N	O	S	0	0
			1416	902	232	272	10		

- Molecule 4 is an oligosaccharide called 2-acetamido-2-deoxy-beta-D-glucopyranose-(1-4)-2-acetamido-2-deoxy-beta-D-glucopyranose.



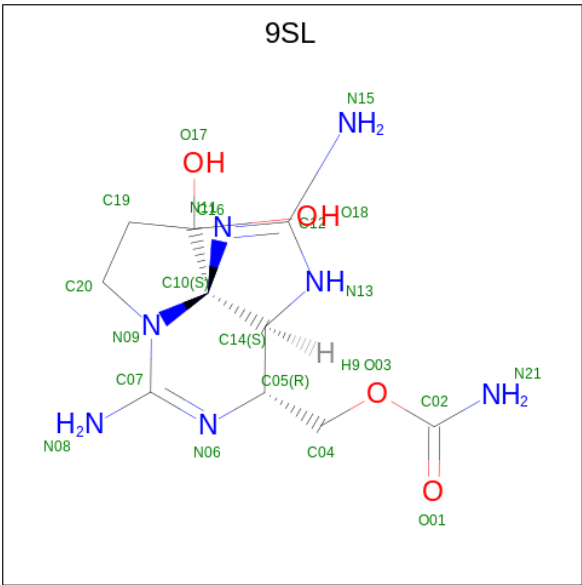
Mol	Chain	Residues	Atoms				AltConf	Trace
4	D	2	Total	C	N	O	0	0
			28	16	2	10		
4	E	2	Total	C	N	O	0	0
			28	16	2	10		

- Molecule 5 is 2-acetamido-2-deoxy-beta-D-glucopyranose (three-letter code: NAG) (formula:  $C_8H_{15}NO_6$ ).



Mol	Chain	Residues	Atoms				AltConf
5	C	1	Total	C	N	O	0
			14	8	1	5	
5	A	1	Total	C	N	O	0
			14	8	1	5	
5	A	1	Total	C	N	O	0
			14	8	1	5	
5	B	1	Total	C	N	O	0
			14	8	1	5	
5	B	1	Total	C	N	O	0
			14	8	1	5	
5	B	1	Total	C	N	O	0
			14	8	1	5	

- Molecule 6 is [(3aS,4R,10aS)-2,6-diamino-10,10-dihydroxy-3a,4,9,10-tetrahydro-3H,8H-pyrrolo[1,2-c]purin-4-yl]methyl carbamate (three-letter code: 9SL) (formula:  $C_{10}H_{17}N_7O_4$ ).

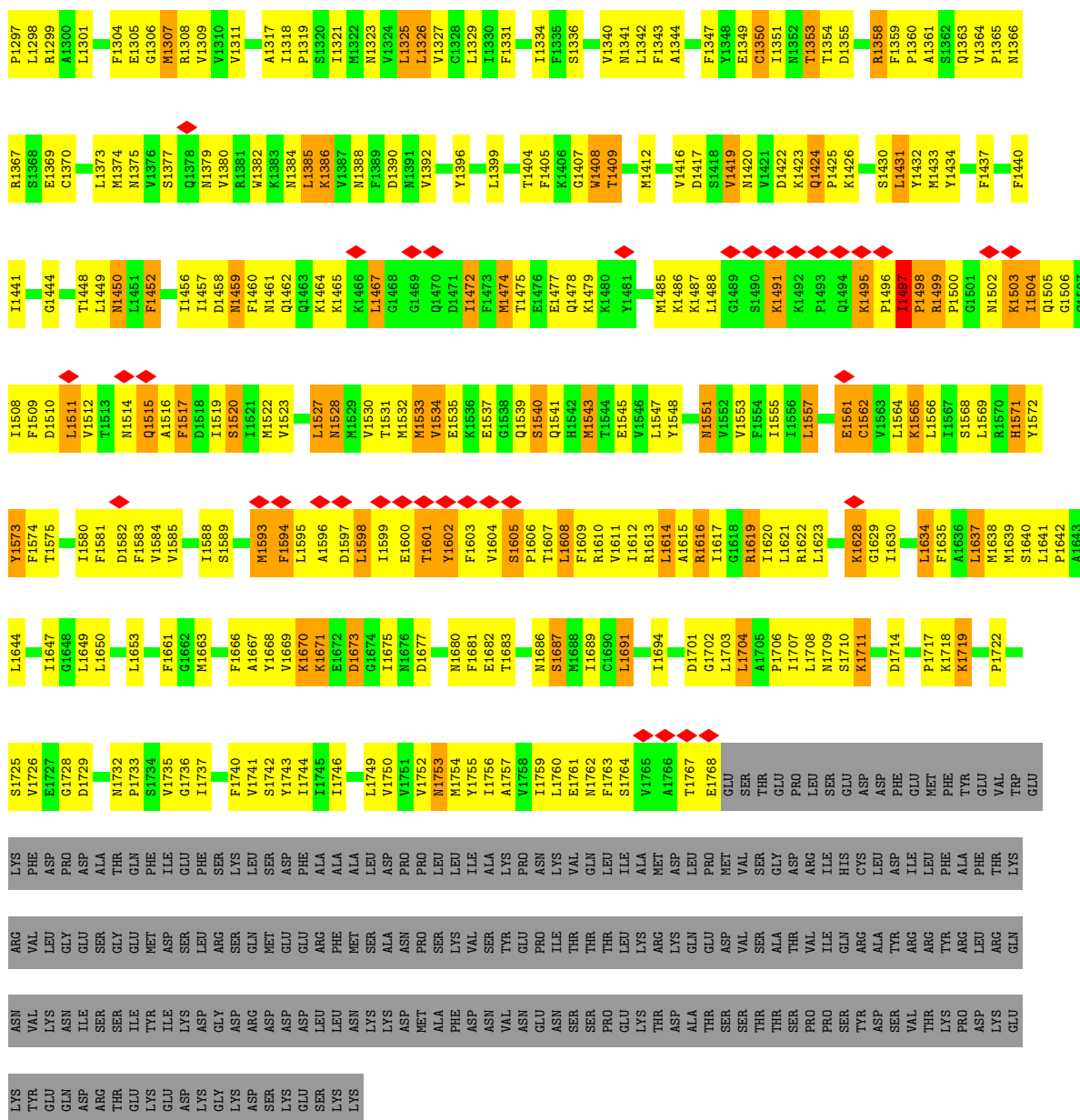


Mol	Chain	Residues	Atoms				AltConf
			Total	C	N	O	
6	A	1	21	10	7	4	0

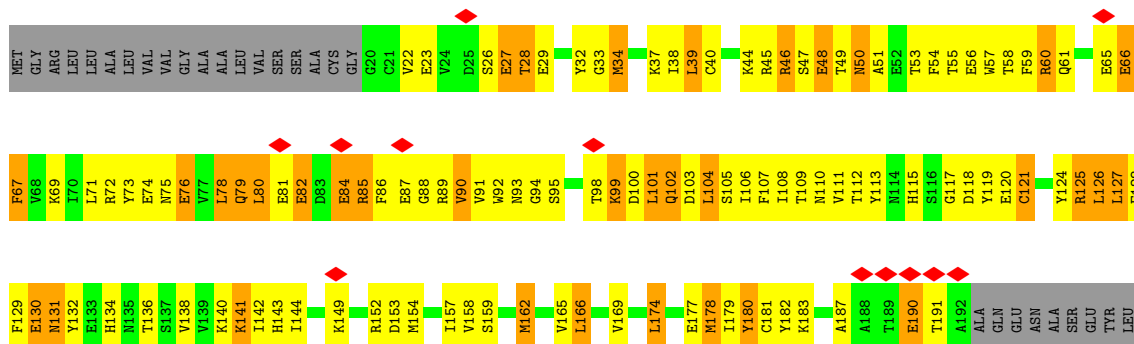
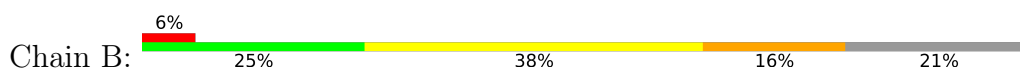


C975	C976	F276	N277	N278	S279	L280	E281	N282	N283	E284	T285	L286	E287	S288	L289	M290	N291	T292	L293	E294	E296	E297	D298	F299	R300	K301	Y302	Y305	G308	S309	K310	D311	A312	L313	L314	C315	S318	T319	D320	S321	G322	Q323	C324	P325	E326	G327	T328	T329	C330	V331	K332	I333	G334	R335	N336	P337																																																																																																																																																																																																																																																																																																																																																																																																																																																																																																																																																																																																																																																																																																																																																																																																																																																																																																																																																																																																																																																																																																																																																																																																																																																																																																																							
D338	Y339	G340	Y341	T342	S343	F344	D345	T346	F347	W349	L354	F355	R356	L357	M358	T359	Q360	D361	Y362	E364	N365	L366	Y367	T370	L371	R372	A373	A374	G375	Y378	M379	I380	V383	V384	F387	L388	G389	S390	F391	Y392	L393	I394	N395	I397	L398	A399	V400	V401	A402	M403	A404																																																																																																																																																																																																																																																																																																																																																																																																																																																																																																																																																																																																																																																																																																																																																																																																																																																																																																																																																																																																																																																																																																																																																																																																																																																																																																																												
Y405	K406	E407	Q408	N409	Q410	A411	M412	I413	E414	GLU	E415	A416	K417	L418	L419	L420	L421	L422	L423	L424	L425	L426	L427	L428	L429	L430	L431	L432	L433	L434	L435	L436	L437	L438	L439	L440	L441	L442	L443	L444	L445	L446	L447	L448	L449	L450	L451	L452	L453	L454	L455	L456	L457	L458	L459	L460	L461	L462	L463	L464	L465	L466	L467	L468	L469	L470	L471	L472	L473	L474	L475	L476	L477	L478	L479	L480	L481	L482	L483	L484	L485	L486	L487	L488	L489	L490	L491	L492	L493	L494	L495	L496	L497	L498	L499	L500	L501	L502	L503	L504	L505	L506	L507	L508	L509	L510	L511	L512	L513	L514	L515	L516	L517	L518	L519	L520	L521	L522	L523	L524	L525	L526	L527	L528	L529	L530	L531	L532	L533	L534	L535	L536	L537	L538	L539	L540	L541	L542	L543	L544	L545	L546	L547	L548	L549	L550	L551	L552	L553	L554	L555	L556	L557	L558	L559	L560	L561	L562	L563	L564	L565	L566	L567	L568	L569	L570	L571	L572	L573	L574	L575	L576	L577	L578	L579	L580	L581	L582	L583	L584	L585	L586	L587	L588	L589	L590	L591	L592	L593	L594	L595	L596	L597	L598	L599	L600	L601	L602	L603	L604	L605	L606	L607	L608	L609	L610	L611	L612	L613	L614	L615	L616	L617	L618	L619	L620	L621	L622	L623	L624	L625	L626	L627	L628	L629	L630	L631	L632	L633	L634	L635	L636	L637	L638	L639	L640	L641	L642	L643	L644	L645	L646	L647	L648	L649	L650	L651	L652	L653	L654	L655	L656	L657	L658	L659	L660	L661	L662	L663	L664	L665	L666	L667	L668	L669	L670	L671	L672	L673	L674	L675	L676	L677	L678	L679	L680	L681	L682	L683	L684	L685	L686	L687	L688	L689	L690	L691	L692	L693	L694	L695	L696	L697	L698	L699	L700	L701	L702	L703	L704	L705	L706	L707	L708	L709	L710	L711	L712	L713	L714	L715	L716	L717	L718	L719	L720	L721	L722	L723	L724	L725	L726	L727	L728	L729	L730	L731	L732	L733	L734	L735	L736	L737	L738	L739	L740	L741	L742	L743	L744	L745	L746	L747	L748	L749	L750	L751	L752	L753	L754	L755	L756	L757	L758	L759	L760	L761	L762	L763	L764	L765	L766	L767	L768	L769	L770	L771	L772	L773	L774	L775	L776	L777	L778	L779	L780	L781	L782	L783	L784	L785	L786	L787	L788	L789	L790	L791	L792	L793	L794	L795	L796	L797	L798	L799	L800	L801	L802	L803	L804	L805	L806	L807	L808	L809	L810	L811	L812	L813	L814	L815	L816	L817	L818	L819	L820	L821	L822	L823	L824	L825	L826	L827	L828	L829	L830	L831	L832	L833	L834	L835	L836	L837	L838	L839	L840	L841	L842	L843	L844	L845	L846	L847	L848	L849	L850	L851	L852	L853	L854	L855	L856	L857	L858	L859	L860	L861	L862	L863	L864	L865	L866	L867	L868	L869	L870	L871	L872	L873	L874	L875	L876	L877	L878	L879	L880	L881	L882	L883	L884	L885	L886	L887	L888	L889	L890	L891	L892	L893	L894	L895	L896	L897	L898	L899	L900	L901	L902	L903	L904	L905	L906	L907	L908	L909	L910	L911	L912	L913	L914	L915	L916	L917	L918	L919	L920	L921	L922	L923	L924	L925	L926	L927	L928	L929	L930	L931	L932	L933	L934	L935	L936	L937	L938	L939	L940	L941	L942	L943	L944	L945	L946	L947	L948	L949	L950	L951	L952	L953	L954	L955	L956	L957	L958	L959	L960	L961	L962	L963	L964	L965	L966	L967	L968	L969	L970	L971	L972	L973	L974	L975	L976	L977	L978	L979	L980	L981	L982	L983	L984	L985	L986	L987	L988	L989	L990	L991	L992	L993	L994	L995	L996	L997	L998	L999	L1000	L1001	L1002	L1003	L1004	L1005	L1006	L1007	L1008	L1009	L1010	L1011	L1012	L1013	L1014	L1015	L1016	L1017	L1018	L1019	L1020	L1021	L1022	L1023	L1024	L1025	L1026	L1027	L1028	L1029	L1030	L1031	L1032	L1033	L1034	L1035	L1036	L1037	L1038	L1039	L1040	L1041	L1042	L1043	L1044	L1045	L1046	L1047	L1048	L1049	L1050	L1051	L1052	L1053	L1054	L1055	L1056	L1057	L1058	L1059	L1060	L1061	L1062	L1063	L1064	L1065	L1066	L1067	L1068	L1069	L1070	L1071	L1072	L1073	L1074	L1075	L1076	L1077	L1078	L1079	L1080	L1081	L1082	L1083	L1084	L1085	L1086	L1087	L1088	L1089	L1090	L1091	L1092	L1093	L1094	L1095	L1096	L1097	L1098	L1099	L1100	L1101	L1102	L1103	L1104	L1105	L1106	L1107	L1108	L1109	L1110	L1111	L1112	L1113	L1114	L1115	L1116	L1117	L1118	L1119	L1120	L1121	L1122	L1123	L1124	L1125	L1126	L1127	L1128	L1129	L1130	L1131	L1132	L1133	L1134	L1135	L1136	L1137	L1138	L1139	L1140	L1141	L1142	L1143	L1144	L1145	L1146	L1147	L1148	L1149	L1150	L1151	L1152	L1153	L1154	L1155	L1156	L1157	L1158	L1159	L1160	L1161	L1162	L1163	L1164	L1165	L1166	L1167	L1168	L1169	L1170	L1171	L1172	L1173	L1174	L1175	L1176	L1177	L1178	L1179	L1180	L1181	L1182	L1183	L1184	L1185	L1186	L1187	L1188	L1189	L1190	L1191	L1192	L1193	L1194	L1195	L1196	L1197	L1198	L1199	L1200	L1201	L1202	L1203	L1204	L1205	L1206	L1207	L1208	L1209	L1210	L1211	L1212	L1213	L1214	L1215	L1216	L1217	L1218	L1219	L1220	L1221	L1222	L1223	L1224	L1225	L1226	L1227	L1228	L1229	L1230	L1231	L1232	L1233	L1234	L1235	L1236	L1237	L1238	L1239	L1240	L1241	L1242	L1243	L1244	L1245	L1246	L1247	L1248	L1249	L1250	L1251	L1252	L1253	L1254	L1255	L1256	L1257	L1258	L1259	L1260	L1261	L1262	L1263	L1264	L1265	L1266	L1267	L1268	L1269	L1270	L1271	L1272	L1273	L1274	L1275	L1276	L1277	L1278	L1279	L1280	L1281	L1282	L1283	L1284	L1285	L1286	L1287	L1288	L1289	L1290	L1291	L1292	L1293	L1294	L1295	L1296	L1297	L1298	L1299	L1300	L1301	L1302	L1303	L1304	L1305	L1306	L1307	L1308	L1309	L1310	L1311	L1312	L1313	L1314	L1315	L1316	L1317	L1318	L1319	L1320	L1321	L1322	L1323	L1324	L1325	L1326	L1327	L1328	L1329	L1330	L1331	L1332	L1333	L1334	L1335	L1336	L1337	L1338	L1339	L1340	L1341	L1342	L1343	L1344	L1345	L1346	L1347	L1348	L1349	L1350	L1351	L1352	L1353	L1354	L1355	L1356	L1357	L1358	L1359	L1360	L1361	L1362	L1363	L1364	L1365	L1366	L1367	L1368	L1369	L1370	L1371	L1372	L1373	L1374	L1375	L1376	L1377	L1378	L1379	L1380	L1381	L1382	L1383	L1384	L1385	L1386	L1387	L1388	L1389	L1390	L1391	L1392	L1393	L1394	L1395	L1396	L1397	L1398	L1399	L1400	L1401	L1402	L1403	L1404	L1405	L1406	L1407	L1408	L1409	L1410	L1411	L1412	L1413	L1414	L1415	L1416	L1417	L1418	L1419	L1420	L1421	L1422	L1423	L1424	L1425	L1426	L1427	L1428	L1429	L1430	L1431	L1432	L1433	L1434	L1435	L1436	L1437	L1438	L1439	L1440	L1441	L1442	L1443	L1444	L1445	L1446	L1447	L1448	L1449	L1450	L1451	L1452	L1453	L1454	L1455	L1456	L1457	L1458	L1459	L1460	L1461	L1462	L1463	L1464	L1465	L1466	L1467	L1468	L1469	L1470	L1471	L1472	L1473	L1474	L1475	L1476	L1477	L1478	L1479	L1480	L1481	L1482	L1483	L1484	L1485	L1486	L1487	L1488	L1489	L1490	L1491	L1492	L1493	L1494	L1495	L1496	L1497	L1498	L1499	L1500	L1501	L1502	L1503	L1504	L1505	L1506	L1507	L1508	L1509	L1510	L1511	L1512	L1513	L1514	L1515	L1516	L1517	L1518	L1519	L1520	L1521	L1522	L1523	L1524	L1525	L1526	L1527	L1528	L1529	L1530	L1531	L1532	L1533	L1534	L1535	L1536	L1537	L1538	L1539	L1540	L1541	L1542	L1543	L1544	L1545	L1546	L1547	L1548	L1549	L1550	L1551	L1552	L1553	L1554	L1555	L1556	L1557	L1558	L1559	L1560	L1561	L1562	L1563	L1564	L1565	L1566	L1567	L1568	L1569	L1570	L1571	L1572	L1573	L1574	L1575	L1576	L1577	L1578	L1579	L1580	L1581	L1582	L1583	L1584	L1585	L1586	L1587	L1588	L1589	L1590	L1591	L1592	L1593	L1594	L1595	L1596	L1597	L1598	L1599	L1600	L1601	L1602	L1603	L1604	L1605	L1606	L1607	L1608	L1609	L1610	L1611	L1612	L1613	L1614	L1615	L1616	L1617	L1618	L1619	L1620	L1621	L1622	L1623	L1624	L1625	L1626	L1627	L1628	L1629	L1630	L1631	L1632	L1633	L1634	L1635	L1636	L1637	L1638	L1639	L1640	L1641	L1642	L1643	L1644	L1645	L1646	L1647	L1648	L1649	L1650	L1651	L1652	L1653	L1654	L1655	L1656	L1657	L1658	L1659	L1660	L1661	L1662	L1663	L1664	L1665	L1666	L1667	L1668	L1669	L1670	L1671	L1672	L1673	L1674	L1675	L1676	L1677	L1678	L1679	L1680	L1681	L1682	L1683	L1684	L1685	L1686	L1687	L1688	L1689	L1690	L1691	L1692	L1693	L1694	L1695	L1696	L1697	L1698	L1699	L1700	L1701	L1702	L1703	L1704	L1705	L1706	L1707	L1708	L1709	L1710	L1711	L1712	L1713	L1714	L1715	L1716	L1717	L1718	L1719	L1720	L1721	L1722	L1723	L1724	L1725	L1726	L1727	L1728	L1729	L1730	L1731</





### ● Molecule 3: Sodium channel subunit beta-1



ILE
THR
SER
GLU
SER
LYS
GLU
ASN
CYS
THR
GLY
VAL
GLN
VAL
ALA
GLU

- Molecule 4: 2-acetamido-2-deoxy-beta-D-glucopyranose-(1-4)-2-acetamido-2-deoxy-beta-D-glucopyranose



MAG1
MAG2

- Molecule 4: 2-acetamido-2-deoxy-beta-D-glucopyranose-(1-4)-2-acetamido-2-deoxy-beta-D-glucopyranose



MAG1
MAG2

## 4 Experimental information

Property	Value	Source
EM reconstruction method	SINGLE PARTICLE	Depositor
Imposed symmetry	POINT, Not provided	
Number of particles used	275630	Depositor
Resolution determination method	FSC 0.143 CUT-OFF	Depositor
CTF correction method	PHASE FLIPPING AND AMPLITUDE CORRECTION	Depositor
Microscope	FEI TITAN KRIOS	Depositor
Voltage (kV)	300	Depositor
Electron dose ( $e^-/\text{\AA}^2$ )	48	Depositor
Minimum defocus (nm)	Not provided	
Maximum defocus (nm)	Not provided	
Magnification	Not provided	
Image detector	GATAN K2 QUANTUM (4k x 4k)	Depositor
Maximum map value	0.410	Depositor
Minimum map value	-0.249	Depositor
Average map value	0.001	Depositor
Map value standard deviation	0.012	Depositor
Recommended contour level	0.07	Depositor
Map size (Å)	261.84, 261.84, 261.84	wwPDB
Map dimensions	240, 240, 240	wwPDB
Map angles (°)	90.0, 90.0, 90.0	wwPDB
Pixel spacing (Å)	1.091, 1.091, 1.091	Depositor

## 5 Model quality [i](#)

### 5.1 Standard geometry [i](#)

Bond lengths and bond angles in the following residue types are not validated in this section: 9SL, NAG

The Z score for a bond length (or angle) is the number of standard deviations the observed value is removed from the expected value. A bond length (or angle) with  $|Z| > 5$  is considered an outlier worth inspection. RMSZ is the root-mean-square of all Z scores of the bond lengths (or angles).

Mol	Chain	Bond lengths		Bond angles	
		RMSZ	$\# Z  > 5$	RMSZ	$\# Z  > 5$
1	C	0.50	1/1002 (0.1%)	0.66	1/1354 (0.1%)
2	A	0.51	0/9417	0.65	5/12761 (0.0%)
3	B	0.45	0/1442	0.63	0/1949
All	All	0.50	1/11861 (0.0%)	0.65	6/16064 (0.0%)

All (1) bond length outliers are listed below:

Mol	Chain	Res	Type	Atoms	Z	Observed(Å)	Ideal(Å)
1	C	127	CYS	CB-SG	11.19	2.01	1.82

All (6) bond angle outliers are listed below:

Mol	Chain	Res	Type	Atoms	Z	Observed(°)	Ideal(°)
1	C	127	CYS	CA-CB-SG	7.87	128.16	114.00
2	A	925	CYS	N-CA-C	-6.16	94.36	111.00
2	A	766	HIS	C-N-CD	5.52	139.99	128.40
2	A	1279	GLY	N-CA-C	-5.33	99.77	113.10
2	A	1497	ILE	C-N-CD	5.14	139.20	128.40
2	A	302	TYR	N-CA-C	5.08	124.73	111.00

There are no chirality outliers.

There are no planarity outliers.

### 5.2 Too-close contacts [i](#)

In the following table, the Non-H and H(model) columns list the number of non-hydrogen atoms and hydrogen atoms in the chain respectively. The H(added) column lists the number of hydrogen atoms added and optimized by MolProbity. The Clashes column lists the number of clashes within the asymmetric unit, whereas Symm-Clashes lists symmetry-related clashes.

Mol	Chain	Non-H	H(model)	H(added)	Clashes	Symm-Clashes
1	C	980	0	943	136	0
2	A	9192	0	9424	1049	0
3	B	1416	0	1379	173	0
4	D	28	0	25	0	0
4	E	28	0	25	6	0
5	A	28	0	26	2	0
5	B	56	0	52	0	0
5	C	14	0	13	4	0
6	A	21	0	0	2	0
All	All	11763	0	11887	1347	0

The all-atom clashscore is defined as the number of clashes found per 1000 atoms (including hydrogen atoms). The all-atom clashscore for this structure is 57.

All (1347) close contacts within the same asymmetric unit are listed below, sorted by their clash magnitude.

Atom-1	Atom-2	Interatomic distance (Å)	Clash overlap (Å)
2:A:1497:ILE:HG23	2:A:1572:TYR:CD2	1.39	1.50
2:A:849:TRP:CD1	2:A:850:PRO:HD2	1.46	1.49
2:A:1694:ILE:CD1	2:A:1703:LEU:HD12	1.47	1.40
2:A:737:ILE:CG2	2:A:797:ALA:HB2	1.52	1.38
2:A:174:ARG:HD3	2:A:182:THR:CG2	1.55	1.37
1:C:65:LEU:CD1	1:C:110:VAL:HB	1.58	1.34
2:A:834:LEU:HD23	2:A:835:ARG:N	1.38	1.34
2:A:1694:ILE:HD11	2:A:1703:LEU:CD1	1.58	1.34
2:A:157:TYR:O	2:A:160:THR:HG22	1.20	1.33
2:A:1238:ILE:CD1	2:A:1270:LEU:HD23	1.59	1.32
2:A:849:TRP:HD1	2:A:850:PRO:CD	1.42	1.32
1:C:30:MET:HG3	1:C:138:GLY:CA	1.57	1.32
2:A:1497:ILE:CG2	2:A:1572:TYR:CD2	2.09	1.31
3:B:32:TYR:CD2	3:B:113:TYR:CE1	2.23	1.26
2:A:1496:PRO:O	2:A:1497:ILE:HD12	1.29	1.24
3:B:51:ALA:CB	3:B:127:LEU:HD12	1.66	1.24
2:A:179:GLY:O	2:A:180:GLU:HG2	1.31	1.24
2:A:1212:GLU:O	2:A:1663:MET:HE1	1.36	1.24
2:A:171:ILE:HG22	2:A:183:PHE:CE2	1.72	1.23
2:A:737:ILE:HB	2:A:797:ALA:CA	1.68	1.22
2:A:1238:ILE:HD11	2:A:1270:LEU:CD2	1.69	1.22
1:C:128:TYR:CD2	1:C:137:ARG:NH2	2.09	1.21
2:A:132:ILE:HD11	2:A:166:GLU:CB	1.68	1.20
2:A:839:LEU:O	2:A:842:VAL:HG23	1.41	1.20
2:A:293:LEU:HD12	2:A:298:ASP:CB	1.71	1.19

*Continued on next page...*

*Continued from previous page...*

Atom-1	Atom-2	Interatomic distance (Å)	Clash overlap (Å)
3:B:51:ALA:HB2	3:B:127:LEU:CD1	1.72	1.19
2:A:336:ASN:ND2	2:A:343:SER:HB3	1.56	1.19
2:A:737:ILE:CB	2:A:797:ALA:HB2	1.73	1.18
2:A:1732:ASN:HB3	2:A:1735:VAL:CG1	1.74	1.17
1:C:128:TYR:CD2	1:C:137:ARG:CZ	2.27	1.17
2:A:136:ILE:HD12	2:A:224:THR:HG22	1.22	1.17
2:A:293:LEU:CD1	2:A:298:ASP:HB3	1.72	1.17
2:A:174:ARG:HD3	2:A:182:THR:HG21	1.25	1.16
2:A:174:ARG:HB3	2:A:182:THR:HB	1.30	1.13
1:C:79:MET:HE1	5:C:301:NAG:C1	1.78	1.12
2:A:737:ILE:HB	2:A:797:ALA:HA	1.22	1.12
2:A:734:LYS:HE3	2:A:799:ASP:OD1	1.46	1.11
2:A:171:ILE:HG22	2:A:183:PHE:CD2	1.85	1.11
2:A:798:MET:HE2	2:A:803:TYR:HA	1.33	1.10
2:A:1502:ASN:HB3	2:A:1504:ILE:HD11	1.27	1.10
2:A:250:ILE:HG22	2:A:1630:ILE:HD11	1.28	1.10
2:A:149:PRO:O	2:A:152:THR:HG22	1.49	1.10
2:A:960:LEU:CD2	2:A:964:LEU:HD23	1.82	1.10
2:A:737:ILE:HB	2:A:797:ALA:CB	1.82	1.09
1:C:30:MET:SD	1:C:137:ARG:CA	2.41	1.09
2:A:794:LYS:HG2	2:A:803:TYR:CE1	1.87	1.08
2:A:1500:PRO:HG3	2:A:1505:GLN:HG2	1.13	1.08
2:A:794:LYS:HG2	2:A:803:TYR:HE1	0.97	1.08
3:B:32:TYR:CD2	3:B:113:TYR:HE1	1.64	1.08
2:A:810:ILE:O	2:A:814:LEU:HD12	1.53	1.08
3:B:60:ARG:HB3	3:B:66:GLU:O	1.53	1.08
2:A:795:LEU:HD11	2:A:803:TYR:CD2	1.89	1.08
2:A:174:ARG:CD	2:A:182:THR:HG22	1.83	1.07
2:A:822:GLU:OE2	2:A:835:ARG:HB2	1.54	1.07
2:A:960:LEU:HD23	2:A:964:LEU:HD23	1.34	1.06
2:A:1732:ASN:CB	2:A:1735:VAL:HG12	1.84	1.06
1:C:30:MET:SD	1:C:138:GLY:N	2.27	1.06
2:A:1283:LEU:HD23	2:A:1283:LEU:H	1.19	1.06
2:A:136:ILE:CD1	2:A:224:THR:HG22	1.84	1.06
2:A:1485:MET:HB3	2:A:1639:MET:HE3	1.37	1.06
3:B:51:ALA:CB	3:B:127:LEU:CD1	2.32	1.06
2:A:132:ILE:HD11	2:A:166:GLU:HB3	1.31	1.05
1:C:30:MET:HG3	1:C:138:GLY:N	1.70	1.05
2:A:174:ARG:CD	2:A:182:THR:CG2	2.33	1.05
2:A:132:ILE:HD12	2:A:166:GLU:OE2	1.55	1.05
2:A:1764:SER:O	2:A:1767:THR:HG22	1.56	1.05

*Continued on next page...*

*Continued from previous page...*

Atom-1	Atom-2	Interatomic distance (Å)	Clash overlap (Å)
2:A:1541:GLN:OE1	2:A:1541:GLN:N	1.89	1.04
2:A:1498:PRO:CD	2:A:1572:TYR:CE2	2.40	1.04
2:A:1467:LEU:HD11	2:A:1472:ILE:HG23	1.40	1.04
2:A:1498:PRO:HD2	2:A:1572:TYR:HE2	1.21	1.04
3:B:54:PHE:CZ	3:B:124:TYR:HD2	1.76	1.04
1:C:65:LEU:HD11	1:C:110:VAL:HB	1.38	1.04
2:A:737:ILE:CG2	2:A:797:ALA:CB	2.35	1.04
1:C:101:PHE:CE2	1:C:103:GLY:O	2.11	1.03
2:A:737:ILE:HG22	2:A:797:ALA:HB2	1.05	1.03
2:A:1596:ALA:HB1	2:A:1609:PHE:CE2	1.93	1.03
2:A:1251:LYS:O	2:A:1255:THR:HG23	1.58	1.03
1:C:107:LYS:NZ	1:C:109:ASP:CB	2.20	1.03
2:A:795:LEU:CD1	2:A:803:TYR:CD2	2.41	1.03
1:C:107:LYS:HZ2	1:C:109:ASP:CB	1.70	1.03
2:A:737:ILE:HG22	2:A:797:ALA:CB	1.87	1.03
1:C:30:MET:SD	1:C:136:HIS:O	2.17	1.02
2:A:1412:MET:HE2	2:A:1434:TYR:HE1	1.22	1.02
1:C:63:PHE:HE2	1:C:105:PRO:HB3	1.21	1.02
2:A:214:ARG:O	2:A:217:ARG:CG	2.07	1.02
2:A:399:ALA:CB	2:A:1762:ASN:HD22	1.73	1.01
2:A:737:ILE:CB	2:A:797:ALA:CB	2.37	1.01
2:A:214:ARG:O	2:A:217:ARG:HG3	1.61	1.00
3:B:60:ARG:CB	3:B:66:GLU:O	2.09	1.00
3:B:39:LEU:HD23	3:B:105:SER:OG	1.60	1.00
2:A:1498:PRO:HD3	2:A:1572:TYR:CE2	1.97	1.00
3:B:54:PHE:CZ	3:B:124:TYR:CD2	2.50	0.99
2:A:336:ASN:ND2	2:A:343:SER:CB	2.26	0.99
1:C:65:LEU:CD1	1:C:110:VAL:CB	2.39	0.99
2:A:1502:ASN:HB3	2:A:1504:ILE:CD1	1.91	0.99
3:B:32:TYR:HD2	3:B:113:TYR:CE1	1.69	0.99
2:A:1496:PRO:O	2:A:1497:ILE:CD1	2.12	0.98
1:C:30:MET:CG	1:C:138:GLY:N	2.27	0.98
1:C:62:GLN:O	1:C:132:PRO:CD	2.11	0.98
3:B:34:MET:O	3:B:111:VAL:HG23	1.64	0.98
1:C:31:GLU:HB3	1:C:53:ASN:HB3	1.45	0.98
2:A:1497:ILE:CG2	2:A:1572:TYR:HD2	1.65	0.98
2:A:1374:MET:HG2	2:A:1380:VAL:HG13	1.46	0.97
2:A:1498:PRO:HD2	2:A:1572:TYR:CE2	2.00	0.97
2:A:133:MET:O	2:A:136:ILE:HG22	1.65	0.96
2:A:1498:PRO:CD	2:A:1572:TYR:HE2	1.77	0.96
2:A:157:TYR:O	2:A:160:THR:CG2	2.14	0.96

*Continued on next page...*

*Continued from previous page...*

Atom-1	Atom-2	Interatomic distance (Å)	Clash overlap (Å)
2:A:1212:GLU:O	2:A:1663:MET:CE	2.14	0.96
1:C:52:PHE:O	1:C:108:TYR:HB3	1.63	0.96
2:A:798:MET:CE	2:A:803:TYR:HA	1.94	0.96
1:C:128:TYR:HD2	1:C:137:ARG:CZ	1.74	0.95
2:A:1694:ILE:CD1	2:A:1703:LEU:CD1	2.27	0.95
3:B:57:TRP:CZ3	3:B:142:ILE:HD12	2.00	0.95
2:A:399:ALA:HB1	2:A:1762:ASN:ND2	1.81	0.95
1:C:30:MET:SD	1:C:137:ARG:C	2.45	0.95
1:C:107:LYS:HZ2	1:C:109:ASP:HB3	1.29	0.95
2:A:399:ALA:CB	2:A:1762:ASN:ND2	2.30	0.95
2:A:1509:PHE:HB2	2:A:1568:SER:HB3	1.48	0.95
2:A:822:GLU:CD	2:A:835:ARG:NH2	2.21	0.94
3:B:32:TYR:CD2	3:B:113:TYR:CD1	2.56	0.94
2:A:1732:ASN:HB3	2:A:1735:VAL:HG12	0.95	0.94
1:C:30:MET:SD	1:C:137:ARG:HA	2.05	0.94
2:A:207:LEU:HD22	2:A:208:GLY:H	1.32	0.94
2:A:171:ILE:CG2	2:A:183:PHE:CE2	2.51	0.93
2:A:1238:ILE:CD1	2:A:1270:LEU:CD2	2.36	0.93
2:A:136:ILE:HD12	2:A:224:THR:CG2	1.97	0.93
2:A:148:PRO:HB2	2:A:152:THR:HG21	1.49	0.93
1:C:79:MET:CE	5:C:301:NAG:C1	2.45	0.93
2:A:164:THR:HG21	2:A:200:TYR:OH	1.67	0.92
1:C:52:PHE:HB2	1:C:129:ILE:HD13	1.51	0.92
2:A:132:ILE:HD11	2:A:166:GLU:HB2	1.51	0.92
2:A:1430:SER:O	2:A:1432:TYR:N	2.04	0.91
2:A:1500:PRO:CG	2:A:1505:GLN:HG2	1.99	0.91
2:A:838:ARG:HH11	2:A:838:ARG:HG3	1.35	0.91
2:A:967:LEU:CD2	2:A:968:LEU:HD13	2.01	0.91
3:B:57:TRP:CH2	3:B:142:ILE:CD1	2.54	0.91
1:C:30:MET:SD	1:C:136:HIS:C	2.49	0.91
2:A:207:LEU:HD22	2:A:208:GLY:N	1.85	0.91
2:A:1412:MET:HE2	2:A:1434:TYR:CE1	2.05	0.91
1:C:29:SER:N	1:C:136:HIS:CD2	2.39	0.90
2:A:136:ILE:CD1	2:A:224:THR:CG2	2.49	0.90
2:A:737:ILE:CB	2:A:797:ALA:CA	2.50	0.90
1:C:30:MET:HG3	1:C:138:GLY:HA2	1.53	0.90
1:C:135:ARG:HG2	1:C:135:ARG:HH21	1.36	0.90
1:C:62:GLN:O	1:C:132:PRO:HD3	1.71	0.90
2:A:813:SER:O	2:A:817:THR:HG23	1.72	0.90
2:A:834:LEU:HD23	2:A:835:ARG:H	1.00	0.90
2:A:1504:ILE:HD13	2:A:1504:ILE:H	1.32	0.90

*Continued on next page...*



*Continued from previous page...*

Atom-1	Atom-2	Interatomic distance (Å)	Clash overlap (Å)
2:A:117:ARG:HB3	2:A:117:ARG:HH11	1.35	0.89
2:A:1497:ILE:HG23	2:A:1572:TYR:CE2	2.06	0.89
3:B:60:ARG:NH2	3:B:118:ASP:OD2	2.05	0.89
2:A:360:GLN:NE2	2:A:390:SER:OG	2.05	0.89
2:A:794:LYS:CG	2:A:803:TYR:HE1	1.85	0.89
2:A:250:ILE:CG2	2:A:1630:ILE:HD11	2.03	0.88
2:A:834:LEU:CD2	2:A:835:ARG:N	2.33	0.88
1:C:59:ASN:CB	1:C:62:GLN:HB2	2.03	0.88
2:A:1284:GLY:O	2:A:1287:LYS:N	2.06	0.88
1:C:63:PHE:HE1	1:C:129:ILE:CG2	1.86	0.88
3:B:57:TRP:CZ3	3:B:142:ILE:CD1	2.55	0.88
1:C:34:VAL:HG12	1:C:50:CYS:SG	2.13	0.88
3:B:32:TYR:HD2	3:B:113:TYR:CD1	1.91	0.88
2:A:174:ARG:HD2	2:A:182:THR:HG22	1.56	0.88
2:A:378:TYR:OH	2:A:1610:ARG:NH1	2.06	0.88
2:A:321:SER:HB3	2:A:375:GLY:HA2	1.52	0.88
2:A:834:LEU:CD2	2:A:835:ARG:H	1.87	0.88
3:B:119:TYR:HB2	3:B:142:ILE:O	1.74	0.88
2:A:742:MET:HB2	2:A:746:VAL:HB	1.54	0.87
1:C:52:PHE:CB	1:C:129:ILE:HD13	2.03	0.87
2:A:822:GLU:CD	2:A:835:ARG:HH21	1.77	0.87
2:A:1581:PHE:O	2:A:1585:VAL:HG13	1.73	0.87
2:A:1639:MET:CE	2:A:1639:MET:HA	2.04	0.87
2:A:1290:ARG:HG2	2:A:1290:ARG:HH11	1.38	0.87
2:A:1596:ALA:HB1	2:A:1609:PHE:HE2	1.36	0.86
2:A:841:ARG:HG2	2:A:841:ARG:HH11	1.39	0.86
2:A:1218:ARG:O	2:A:1219:LYS:HG2	1.75	0.86
2:A:1452:PHE:O	2:A:1456:ILE:HD12	1.75	0.86
2:A:117:ARG:HH11	2:A:117:ARG:CB	1.87	0.86
2:A:895:CYS:O	2:A:897:CYS:N	2.09	0.86
1:C:69:TYR:HE2	1:C:94:ARG:NH1	1.74	0.85
2:A:862:SER:O	2:A:870:THR:HG21	1.76	0.85
2:A:168:LEU:HD23	2:A:169:VAL:N	1.92	0.85
2:A:1520:SER:O	2:A:1523:VAL:HG12	1.76	0.85
2:A:179:GLY:O	2:A:180:GLU:CG	2.22	0.85
2:A:207:LEU:HD12	2:A:213:LEU:HD23	1.59	0.85
2:A:1186:TYR:O	2:A:1190:GLU:HG2	1.75	0.85
2:A:132:ILE:HD12	2:A:166:GLU:CD	1.96	0.85
2:A:1457:ILE:HD12	2:A:1458:ASP:N	1.92	0.85
1:C:63:PHE:HE1	1:C:129:ILE:HG22	1.39	0.85
2:A:1384:ASN:OD1	2:A:1388:ASN:ND2	2.09	0.85

*Continued on next page...*

*Continued from previous page...*

Atom-1	Atom-2	Interatomic distance (Å)	Clash overlap (Å)
2:A:1532:MET:SD	2:A:1620:ILE:HD11	2.17	0.85
1:C:29:SER:N	1:C:136:HIS:HD2	1.74	0.85
2:A:795:LEU:CD1	2:A:803:TYR:CG	2.59	0.85
2:A:1288:SER:O	2:A:1291:THR:HG22	1.75	0.84
1:C:65:LEU:HD12	1:C:110:VAL:CB	2.08	0.84
1:C:66:ASN:ND2	1:C:79:MET:CE	2.39	0.84
2:A:214:ARG:O	2:A:217:ARG:HG2	1.76	0.84
2:A:1582:ASP:O	2:A:1585:VAL:HG22	1.77	0.84
2:A:1229:ALA:O	2:A:1232:ILE:HG22	1.76	0.84
2:A:1457:ILE:HG22	2:A:1756:ILE:CD1	2.07	0.84
2:A:276:PHE:CZ	2:A:280:LEU:HD21	2.12	0.84
1:C:33:THR:O	1:C:50:CYS:HA	1.79	0.83
3:B:46:ARG:HD3	3:B:48:GLU:OE2	1.78	0.83
1:C:63:PHE:CE2	1:C:105:PRO:HB3	2.09	0.83
2:A:1613:ARG:O	2:A:1616:ARG:HG2	1.76	0.83
2:A:1295:LEU:HD12	2:A:1298:LEU:HD22	1.60	0.83
2:A:1717:PRO:O	2:A:1728:GLY:HA3	1.79	0.83
3:B:85:ARG:HG2	3:B:85:ARG:HH11	1.43	0.83
2:A:736:CYS:O	2:A:740:ILE:HG12	1.78	0.83
2:A:869:LEU:HD12	2:A:869:LEU:O	1.78	0.83
2:A:1412:MET:CE	2:A:1434:TYR:CE1	2.62	0.83
2:A:1497:ILE:HG23	2:A:1572:TYR:CG	2.14	0.83
1:C:66:ASN:ND2	1:C:79:MET:HE1	1.93	0.83
2:A:119:SER:O	2:A:122:ILE:HG22	1.79	0.82
3:B:34:MET:O	3:B:111:VAL:CG2	2.26	0.82
2:A:188:TRP:CD1	2:A:232:LYS:CE	2.61	0.82
2:A:1574:PHE:HD1	2:A:1580:ILE:HD11	1.45	0.82
2:A:1522:MET:HE1	2:A:1623:LEU:CD2	2.10	0.82
1:C:30:MET:HG3	1:C:138:GLY:HA3	1.56	0.82
2:A:179:GLY:C	2:A:180:GLU:HG2	2.00	0.82
2:A:834:LEU:O	2:A:837:PHE:HB2	1.79	0.82
3:B:72:ARG:HH22	3:B:74:GLU:CD	1.81	0.82
1:C:65:LEU:HD12	1:C:110:VAL:HB	1.61	0.82
2:A:366:LEU:O	2:A:370:THR:HG23	1.79	0.82
2:A:1457:ILE:HG22	2:A:1756:ILE:HD11	1.61	0.81
4:E:1:NAG:H3	4:E:1:NAG:H83	1.61	0.81
2:A:399:ALA:HB1	2:A:1762:ASN:HD22	1.41	0.81
2:A:300:ARG:HH22	2:A:308:GLY:H	1.28	0.81
3:B:54:PHE:CE1	3:B:124:TYR:HD2	1.97	0.81
2:A:300:ARG:HH11	2:A:300:ARG:HG2	1.45	0.81
2:A:1607:THR:HG23	2:A:1610:ARG:HH11	1.46	0.81

*Continued on next page...*

*Continued from previous page...*

Atom-1	Atom-2	Interatomic distance (Å)	Clash overlap (Å)
2:A:734:LYS:NZ	2:A:799:ASP:OD2	2.13	0.81
2:A:737:ILE:HG21	2:A:797:ALA:N	1.95	0.81
2:A:1460:PHE:HZ	2:A:1753:ASN:HD21	1.27	0.81
2:A:145:MET:HE2	2:A:145:MET:HA	1.60	0.81
2:A:410:GLN:O	2:A:413:ILE:HG22	1.80	0.81
4:E:2:NAG:O7	4:E:2:NAG:O3	1.98	0.81
2:A:1639:MET:HA	2:A:1639:MET:HE2	1.64	0.80
3:B:51:ALA:HB2	3:B:127:LEU:HD12	0.84	0.80
1:C:107:LYS:NZ	1:C:109:ASP:HB2	1.95	0.80
2:A:132:ILE:CD1	2:A:166:GLU:CB	2.56	0.80
2:A:327:GLY:O	3:B:132:TYR:HE2	1.64	0.80
2:A:835:ARG:HH21	2:A:835:ARG:HG3	1.46	0.80
1:C:107:LYS:NZ	1:C:109:ASP:CG	2.34	0.80
3:B:85:ARG:O	3:B:115:HIS:HE1	1.63	0.80
2:A:281:GLU:O	2:A:284:GLU:HG3	1.82	0.80
3:B:57:TRP:HZ3	3:B:142:ILE:HD12	1.44	0.80
3:B:67:PHE:CE2	3:B:120:GLU:HG3	2.16	0.80
2:A:807:GLY:O	2:A:810:ILE:HG13	1.81	0.80
2:A:1522:MET:CE	2:A:1623:LEU:CD2	2.59	0.80
1:C:128:TYR:CG	1:C:137:ARG:NH2	2.49	0.80
2:A:412:ASN:O	2:A:415:GLU:HG3	1.82	0.80
2:A:1485:MET:HB3	2:A:1639:MET:CE	2.12	0.80
3:B:39:LEU:CD2	3:B:105:SER:OG	2.29	0.80
1:C:47:ARG:O	1:C:49:PRO:HD3	1.81	0.80
2:A:293:LEU:HD12	2:A:298:ASP:HB3	0.86	0.79
2:A:163:TYR:HA	2:A:166:GLU:HG2	1.64	0.79
2:A:116:ARG:HH12	2:A:176:PHE:CB	1.95	0.79
2:A:196:ILE:HD12	2:A:197:VAL:N	1.97	0.79
2:A:1293:ARG:CB	2:A:1293:ARG:HH21	1.94	0.79
2:A:1270:LEU:HD13	2:A:1270:LEU:O	1.83	0.79
2:A:188:TRP:CD1	2:A:232:LYS:HE3	2.18	0.79
1:C:33:THR:O	1:C:51:THR:N	2.15	0.78
2:A:160:THR:O	2:A:164:THR:HG23	1.83	0.78
2:A:1467:LEU:HD11	2:A:1472:ILE:CG2	2.12	0.78
2:A:315:CYS:HB3	2:A:324:CYS:SG	2.24	0.78
2:A:199:ALA:O	2:A:202:THR:HG22	1.84	0.78
2:A:795:LEU:HD12	2:A:803:TYR:CG	2.18	0.78
1:C:33:THR:HB	1:C:51:THR:CB	2.14	0.78
2:A:879:ILE:O	2:A:883:VAL:HG23	1.84	0.78
2:A:1709:ASN:HB2	2:A:1714:ASP:HB3	1.66	0.78
1:C:59:ASN:HB2	1:C:62:GLN:HB2	1.66	0.77

*Continued on next page...*

*Continued from previous page...*

Atom-1	Atom-2	Interatomic distance (Å)	Clash overlap (Å)
2:A:895:CYS:CB	2:A:938:VAL:HG12	2.15	0.77
2:A:1595:LEU:O	2:A:1599:ILE:HG13	1.83	0.77
2:A:1509:PHE:CB	2:A:1568:SER:HB3	2.14	0.77
1:C:62:GLN:O	1:C:132:PRO:HD2	1.85	0.77
2:A:1755:TYR:O	2:A:1759:ILE:HG12	1.84	0.77
2:A:1637:LEU:HD22	2:A:1637:LEU:O	1.84	0.77
1:C:69:TYR:CE2	1:C:94:ARG:NH1	2.52	0.77
2:A:1677:ASP:OD2	3:B:46:ARG:NH1	2.18	0.77
2:A:136:ILE:HD13	2:A:136:ILE:O	1.84	0.77
4:E:1:NAG:H3	4:E:1:NAG:C8	2.14	0.77
2:A:765:HIS:HB2	2:A:767:PRO:HD2	1.65	0.77
3:B:51:ALA:HB1	3:B:126:LEU:O	1.85	0.77
3:B:92:TRP:CE2	3:B:94:GLY:HA3	2.20	0.77
2:A:116:ARG:HH12	2:A:176:PHE:HB2	1.48	0.77
2:A:207:LEU:HD12	2:A:213:LEU:CD2	2.14	0.76
2:A:321:SER:HB3	2:A:375:GLY:CA	2.15	0.76
1:C:52:PHE:HB2	1:C:129:ILE:CD1	2.15	0.76
1:C:107:LYS:HD2	1:C:109:ASP:HB2	1.67	0.76
2:A:336:ASN:CG	2:A:343:SER:OG	2.24	0.76
1:C:59:ASN:HB3	1:C:62:GLN:HB2	1.68	0.76
2:A:131:LEU:HD22	2:A:131:LEU:O	1.84	0.76
1:C:107:LYS:HZ3	1:C:109:ASP:CB	1.97	0.76
3:B:32:TYR:CE2	3:B:113:TYR:CD1	2.74	0.76
2:A:851:THR:HG22	2:A:1327:VAL:HG21	1.66	0.76
3:B:71:LEU:HD21	3:B:106:ILE:HD12	1.68	0.76
2:A:188:TRP:CD1	2:A:232:LYS:HE2	2.20	0.76
2:A:806:VAL:CG2	2:A:809:ASN:HB2	2.16	0.76
1:C:31:GLU:O	1:C:52:PHE:HA	1.85	0.75
2:A:395:ASN:ND2	2:A:1755:TYR:CE1	2.53	0.75
2:A:1374:MET:CG	2:A:1380:VAL:HG13	2.15	0.75
1:C:65:LEU:HD13	1:C:110:VAL:HB	1.67	0.75
2:A:1522:MET:CE	2:A:1623:LEU:HD23	2.16	0.75
3:B:76:GLU:OE2	3:B:76:GLU:HA	1.86	0.75
2:A:737:ILE:CB	2:A:797:ALA:HA	2.09	0.75
3:B:32:TYR:CE2	3:B:113:TYR:CE1	2.74	0.75
1:C:32:VAL:HA	1:C:51:THR:O	1.86	0.75
1:C:107:LYS:HZ3	1:C:109:ASP:CG	1.89	0.75
2:A:755:VAL:O	2:A:758:THR:HG22	1.87	0.75
2:A:1499:ARG:HG2	2:A:1509:PHE:CE1	2.22	0.75
3:B:72:ARG:NH2	3:B:74:GLU:OE2	2.20	0.75
1:C:135:ARG:HG2	1:C:135:ARG:NH2	2.00	0.75

*Continued on next page...*

*Continued from previous page...*

Atom-1	Atom-2	Interatomic distance (Å)	Clash overlap (Å)
2:A:407:GLU:HG3	2:A:408:GLN:N	2.02	0.75
2:A:909:HIS:HD2	2:A:911:ASN:H	1.34	0.75
2:A:217:ARG:HB3	2:A:217:ARG:NH1	2.00	0.75
2:A:1290:ARG:HG2	2:A:1290:ARG:NH1	1.99	0.75
3:B:126:LEU:HD13	3:B:128:PHE:CZ	2.22	0.75
1:C:63:PHE:CE1	1:C:129:ILE:CG2	2.70	0.74
1:C:103:GLY:O	1:C:105:PRO:HD3	1.87	0.74
2:A:960:LEU:HD21	2:A:964:LEU:HD23	1.68	0.74
3:B:58:THR:HG22	3:B:69:LYS:HA	1.67	0.74
2:A:395:ASN:ND2	2:A:1755:TYR:CZ	2.55	0.74
1:C:58:VAL:HG13	1:C:63:PHE:HB2	1.69	0.74
2:A:1295:LEU:HD12	2:A:1298:LEU:CD2	2.17	0.74
2:A:210:VAL:O	2:A:214:ARG:HG2	1.87	0.74
2:A:1503:LYS:CD	2:A:1503:LYS:H	2.00	0.74
2:A:1497:ILE:HG21	2:A:1572:TYR:HD2	1.53	0.74
1:C:30:MET:SD	1:C:137:ARG:N	2.61	0.74
2:A:1467:LEU:HD21	2:A:1472:ILE:CG2	2.18	0.74
2:A:1588:ILE:HG22	2:A:1615:ALA:HB1	1.70	0.74
2:A:896:VAL:O	2:A:899:ILE:HG12	1.87	0.74
2:A:838:ARG:HG3	2:A:838:ARG:NH1	2.03	0.74
2:A:1504:ILE:HG12	2:A:1505:GLN:N	2.03	0.73
2:A:118:ILE:HD13	2:A:118:ILE:N	2.04	0.73
2:A:167:SER:O	2:A:171:ILE:HG23	1.88	0.73
2:A:174:ARG:CB	2:A:182:THR:HB	2.16	0.73
2:A:116:ARG:HH12	2:A:176:PHE:CA	2.00	0.73
2:A:831:LEU:O	2:A:834:LEU:HD22	1.88	0.73
1:C:101:PHE:HE2	1:C:103:GLY:O	1.69	0.73
2:A:835:ARG:NH2	2:A:835:ARG:HG3	2.00	0.73
2:A:1283:LEU:H	2:A:1283:LEU:CD2	1.99	0.73
2:A:1504:ILE:HD13	2:A:1504:ILE:N	2.03	0.73
2:A:1430:SER:HB3	2:A:1433:MET:HG2	1.70	0.72
2:A:1531:THR:O	2:A:1534:VAL:CG2	2.37	0.72
3:B:152:ARG:HG2	3:B:157:ILE:HG13	1.71	0.72
1:C:65:LEU:HD12	1:C:110:VAL:CG1	2.19	0.72
1:C:71:GLU:HG3	1:C:94:ARG:HH12	1.53	0.72
2:A:395:ASN:OD1	2:A:1755:TYR:CD1	2.41	0.72
2:A:1598:LEU:O	2:A:1601:THR:HG23	1.88	0.72
2:A:735:LYS:HD2	2:A:735:LYS:O	1.89	0.72
2:A:410:GLN:HE21	2:A:410:GLN:C	1.92	0.72
2:A:415:GLU:OE2	2:A:416:ALA:N	2.22	0.72
2:A:1336:SER:O	2:A:1340:VAL:HG23	1.89	0.72

*Continued on next page...*

*Continued from previous page...*

Atom-1	Atom-2	Interatomic distance (Å)	Clash overlap (Å)
3:B:60:ARG:HB2	3:B:66:GLU:O	1.88	0.72
1:C:41:LEU:HD23	1:C:147:LEU:HB3	1.71	0.72
2:A:116:ARG:NH1	2:A:176:PHE:HB2	2.05	0.72
2:A:318:SER:HB2	2:A:320:ASP:OD1	1.89	0.72
2:A:1597:ASP:O	2:A:1601:THR:HG22	1.90	0.72
3:B:85:ARG:O	3:B:115:HIS:CE1	2.43	0.72
2:A:1304:PHE:HD2	2:A:1307:MET:CE	2.01	0.72
1:C:79:MET:HE2	5:C:301:NAG:O5	1.90	0.72
2:A:787:PHE:CD1	2:A:841:ARG:NH1	2.57	0.72
2:A:1375:ASN:OD1	5:A:2005:NAG:O5	2.03	0.72
3:B:92:TRP:CZ2	3:B:94:GLY:HA3	2.24	0.72
2:A:1474:MET:CE	2:A:1642:PRO:HB2	2.19	0.72
1:C:33:THR:HB	1:C:51:THR:OG1	1.90	0.71
3:B:54:PHE:CE2	3:B:124:TYR:HB2	2.25	0.71
3:B:104:LEU:N	3:B:104:LEU:HD22	2.05	0.71
2:A:1295:LEU:CD1	2:A:1298:LEU:HD22	2.21	0.71
2:A:1365:PRO:O	2:A:1424:GLN:HB3	1.91	0.71
2:A:841:ARG:HG2	2:A:841:ARG:NH1	2.04	0.71
2:A:399:ALA:HB3	2:A:1762:ASN:ND2	2.05	0.71
2:A:1273:LEU:HD12	2:A:1273:LEU:O	1.91	0.71
2:A:117:ARG:HA	2:A:120:ILE:HG22	1.73	0.71
2:A:822:GLU:CG	2:A:835:ARG:HH22	2.04	0.71
2:A:960:LEU:CD2	2:A:964:LEU:CD2	2.66	0.71
2:A:1504:ILE:CD1	2:A:1504:ILE:H	2.04	0.71
2:A:145:MET:HA	2:A:145:MET:CE	2.19	0.70
2:A:388:LEU:O	2:A:392:TYR:HB3	1.91	0.70
2:A:795:LEU:HD11	2:A:803:TYR:CE2	2.26	0.70
2:A:1261:LEU:O	2:A:1265:ILE:HG13	1.91	0.70
2:A:1317:ALA:O	2:A:1321:ILE:HG12	1.91	0.70
2:A:181:PHE:O	2:A:185:ARG:HG2	1.91	0.70
1:C:107:LYS:NZ	1:C:109:ASP:OD2	2.24	0.70
2:A:798:MET:HE2	2:A:803:TYR:CA	2.19	0.70
2:A:902:ASP:O	2:A:903:CYS:HB2	1.90	0.70
2:A:1485:MET:SD	2:A:1639:MET:HE1	2.31	0.70
2:A:823:LEU:HD23	2:A:823:LEU:O	1.90	0.70
2:A:726:CYS:HB2	2:A:728:PRO:HD2	1.71	0.70
2:A:790:GLU:HG3	2:A:791:MET:N	2.05	0.70
2:A:791:MET:HG2	2:A:803:TYR:OH	1.92	0.70
2:A:1574:PHE:HD1	2:A:1580:ILE:CD1	2.04	0.70
2:A:852:LEU:HD13	2:A:1327:VAL:HG13	1.72	0.70
3:B:125:ARG:NH1	3:B:125:ARG:HG3	2.06	0.70

*Continued on next page...*

*Continued from previous page...*

Atom-1	Atom-2	Interatomic distance (Å)	Clash overlap (Å)
2:A:1221:THR:O	2:A:1224:ILE:HG22	1.92	0.70
3:B:86:PHE:HZ	3:B:119:TYR:HH	1.40	0.70
2:A:166:GLU:HG3	2:A:167:SER:N	2.08	0.69
3:B:187:ALA:O	3:B:190:GLU:HG3	1.92	0.69
3:B:27:GLU:OE2	3:B:27:GLU:HA	1.92	0.69
2:A:123:LEU:HD23	2:A:123:LEU:O	1.92	0.69
1:C:71:GLU:CG	1:C:94:ARG:HH12	2.06	0.69
2:A:1238:ILE:HD11	2:A:1270:LEU:HD23	0.75	0.69
3:B:152:ARG:HG2	3:B:157:ILE:CG1	2.22	0.69
2:A:336:ASN:HD21	2:A:343:SER:HB3	1.55	0.69
3:B:71:LEU:CD2	3:B:106:ILE:HD12	2.21	0.69
1:C:33:THR:HB	1:C:51:THR:HB	1.73	0.69
3:B:71:LEU:CD2	3:B:106:ILE:CD1	2.70	0.69
2:A:1650:LEU:HD13	2:A:1650:LEU:O	1.93	0.69
1:C:33:THR:N	1:C:51:THR:O	2.26	0.68
2:A:795:LEU:CD1	2:A:803:TYR:CE2	2.76	0.68
2:A:207:LEU:C	2:A:207:LEU:HD13	2.13	0.68
2:A:207:LEU:HD21	2:A:209:ASN:OD1	1.93	0.68
2:A:822:GLU:OE2	2:A:835:ARG:CB	2.38	0.68
2:A:262:ILE:HG12	2:A:1617:ILE:HD12	1.75	0.68
2:A:840:LEU:O	2:A:842:VAL:N	2.25	0.68
2:A:1561:GLU:HG3	2:A:1562:CYS:N	2.07	0.68
3:B:125:ARG:HG3	3:B:125:ARG:HH11	1.59	0.68
2:A:207:LEU:HD11	2:A:209:ASN:OD1	1.93	0.68
2:A:1522:MET:HE1	2:A:1623:LEU:HD23	1.75	0.68
2:A:737:ILE:C	2:A:797:ALA:CB	2.61	0.68
2:A:1286:ILE:O	2:A:1289:LEU:HB2	1.93	0.68
2:A:1694:ILE:HD12	2:A:1703:LEU:CD1	2.22	0.68
2:A:1750:VAL:O	2:A:1753:ASN:HB2	1.93	0.68
1:C:61:LYS:HG3	1:C:85:MET:CE	2.24	0.68
3:B:112:THR:HG22	3:B:113:TYR:N	2.08	0.68
2:A:822:GLU:CG	2:A:835:ARG:NH2	2.57	0.68
2:A:1619:ARG:O	2:A:1622:ARG:HG3	1.94	0.68
2:A:207:LEU:CD1	2:A:213:LEU:HD23	2.23	0.67
1:C:30:MET:CG	1:C:138:GLY:CA	2.52	0.67
2:A:276:PHE:HZ	2:A:280:LEU:HD21	1.55	0.67
2:A:1304:PHE:CD2	2:A:1307:MET:CE	2.77	0.67
2:A:217:ARG:HB3	2:A:217:ARG:CZ	2.24	0.67
2:A:1412:MET:CE	2:A:1434:TYR:CD1	2.77	0.67
2:A:191:LEU:O	2:A:191:LEU:HD23	1.95	0.67
2:A:264:LEU:O	2:A:268:MET:HB3	1.95	0.67

*Continued on next page...*



*Continued from previous page...*

Atom-1	Atom-2	Interatomic distance (Å)	Clash overlap (Å)
3:B:50:ASN:O	3:B:50:ASN:ND2	2.28	0.67
1:C:34:VAL:HG23	1:C:142:ILE:HG12	1.76	0.67
2:A:168:LEU:HD23	2:A:168:LEU:C	2.15	0.67
2:A:812:ASP:OD2	2:A:844:LYS:NZ	2.22	0.67
1:C:65:LEU:C	1:C:65:LEU:HD23	2.15	0.67
2:A:773:LYS:HE3	2:A:773:LYS:O	1.94	0.67
2:A:967:LEU:C	2:A:967:LEU:HD23	2.14	0.67
2:A:1474:MET:HE2	2:A:1642:PRO:HB2	1.77	0.67
3:B:73:TYR:CD1	3:B:78:LEU:HB2	2.29	0.67
2:A:332:LYS:HG3	2:A:332:LYS:O	1.95	0.67
2:A:817:THR:O	2:A:821:VAL:HG23	1.95	0.67
3:B:69:LYS:NZ	3:B:81:GLU:OE2	2.28	0.67
1:C:79:MET:CE	5:C:301:NAG:O5	2.43	0.66
2:A:131:LEU:HD13	2:A:131:LEU:C	2.15	0.66
2:A:748:LEU:C	2:A:748:LEU:HD13	2.16	0.66
2:A:822:GLU:HG2	2:A:835:ARG:HH22	1.59	0.66
2:A:823:LEU:HD23	2:A:823:LEU:C	2.15	0.66
2:A:960:LEU:HD23	2:A:960:LEU:O	1.95	0.66
2:A:734:LYS:HE3	2:A:799:ASP:CG	2.15	0.66
2:A:895:CYS:HB2	2:A:938:VAL:HG12	1.76	0.66
3:B:57:TRP:CH2	3:B:142:ILE:HD11	2.29	0.66
3:B:98:THR:O	3:B:99:LYS:HB3	1.95	0.66
2:A:737:ILE:C	2:A:797:ALA:HB1	2.16	0.66
2:A:1511:LEU:C	2:A:1511:LEU:HD23	2.16	0.66
3:B:72:ARG:NH2	3:B:74:GLU:CD	2.48	0.66
2:A:881:ALA:O	2:A:916:SER:OG	2.13	0.66
2:A:116:ARG:HH12	2:A:176:PHE:HA	1.60	0.66
2:A:171:ILE:HD12	2:A:171:ILE:C	2.15	0.66
2:A:737:ILE:HG21	2:A:797:ALA:H	1.60	0.66
2:A:793:LEU:C	2:A:793:LEU:HD13	2.16	0.66
2:A:1218:ARG:HG2	2:A:1218:ARG:HH21	1.60	0.66
2:A:1286:ILE:HD12	2:A:1286:ILE:C	2.16	0.66
2:A:1363:GLN:O	2:A:1364:VAL:HG12	1.96	0.66
2:A:787:PHE:CE1	2:A:841:ARG:NH1	2.64	0.66
2:A:136:ILE:HD11	2:A:224:THR:CG2	2.25	0.66
2:A:251:LEU:HD13	2:A:1630:ILE:HG23	1.77	0.66
2:A:772:PHE:HE1	2:A:776:LEU:HD23	1.60	0.66
2:A:1202:ILE:O	2:A:1206:SER:OG	2.14	0.66
2:A:388:LEU:HD13	2:A:388:LEU:C	2.16	0.66
2:A:772:PHE:CE1	2:A:776:LEU:HD23	2.31	0.66
1:C:65:LEU:CD1	1:C:110:VAL:CG1	2.74	0.66

*Continued on next page...*



*Continued from previous page...*

Atom-1	Atom-2	Interatomic distance (Å)	Clash overlap (Å)
2:A:192:ASP:OD1	2:A:223:LYS:HD2	1.96	0.66
2:A:196:ILE:HD12	2:A:196:ILE:C	2.16	0.66
2:A:1318:ILE:CG1	2:A:1319:PRO:HD3	2.26	0.66
2:A:1764:SER:C	2:A:1767:THR:HG22	2.16	0.66
2:A:1304:PHE:HD2	2:A:1307:MET:HE1	1.61	0.65
2:A:1635:PHE:CD1	2:A:1638:MET:HE2	2.31	0.65
2:A:1318:ILE:HG13	2:A:1319:PRO:HD3	1.76	0.65
2:A:791:MET:HE3	2:A:795:LEU:HD22	1.79	0.65
2:A:1500:PRO:HG3	2:A:1505:GLN:CG	2.08	0.65
2:A:367:TYR:OH	2:A:1689:ILE:HG23	1.96	0.65
1:C:65:LEU:HD12	1:C:110:VAL:HG11	1.77	0.65
2:A:928:TRP:CZ3	2:A:929:ILE:HD12	2.31	0.65
2:A:220:ARG:O	2:A:223:LYS:HB2	1.97	0.65
2:A:336:ASN:CB	2:A:343:SER:OG	2.45	0.65
2:A:895:CYS:HB3	2:A:938:VAL:HG12	1.78	0.65
2:A:1457:ILE:HD12	2:A:1457:ILE:C	2.16	0.65
2:A:136:ILE:HD13	2:A:136:ILE:C	2.17	0.65
2:A:196:ILE:O	2:A:200:TYR:HD1	1.79	0.65
2:A:202:THR:OG1	2:A:214:ARG:NH1	2.30	0.64
2:A:361:ASP:OD2	2:A:929:ILE:HG22	1.97	0.64
2:A:843:PHE:O	2:A:845:LEU:N	2.31	0.64
2:A:1214:ILE:HD12	3:B:22:VAL:CG2	2.27	0.64
2:A:1602:TYR:O	2:A:1603:PHE:HB2	1.96	0.64
2:A:131:LEU:HD13	2:A:132:ILE:N	2.12	0.64
2:A:132:ILE:CD1	2:A:166:GLU:HB2	2.26	0.64
2:A:332:LYS:O	2:A:333:ILE:HG12	1.97	0.64
2:A:764:GLU:OE1	2:A:1341:ASN:ND2	2.31	0.64
2:A:851:THR:CG2	2:A:1327:VAL:HG21	2.27	0.64
2:A:1522:MET:HE1	2:A:1623:LEU:HD22	1.78	0.64
3:B:73:TYR:HD1	3:B:78:LEU:HB2	1.62	0.64
2:A:209:ASN:OD1	2:A:209:ASN:N	2.30	0.64
2:A:909:HIS:CD2	2:A:911:ASN:H	2.15	0.64
2:A:947:VAL:O	2:A:951:VAL:HG23	1.98	0.64
2:A:1460:PHE:CZ	2:A:1753:ASN:ND2	2.66	0.64
2:A:250:ILE:HG22	2:A:1630:ILE:CD1	2.18	0.64
2:A:300:ARG:NH2	2:A:308:GLY:H	1.96	0.64
2:A:945:LEU:O	2:A:949:MET:HG2	1.98	0.64
2:A:119:SER:OG	2:A:173:ALA:HB2	1.97	0.64
2:A:1431:LEU:HD12	2:A:1431:LEU:O	1.98	0.64
2:A:1732:ASN:CB	2:A:1735:VAL:CG1	2.61	0.64
2:A:866:LEU:O	2:A:870:THR:HG22	1.97	0.64

*Continued on next page...*

*Continued from previous page...*

Atom-1	Atom-2	Interatomic distance (Å)	Clash overlap (Å)
2:A:293:LEU:HD11	2:A:298:ASP:C	2.18	0.64
2:A:1293:ARG:HH21	2:A:1293:ARG:HB2	1.63	0.64
2:A:1385:LEU:O	2:A:1386:LYS:HB2	1.96	0.64
2:A:1467:LEU:HD21	2:A:1472:ILE:HG21	1.79	0.64
2:A:1528:ASN:HD22	2:A:1528:ASN:C	2.02	0.64
2:A:1760:LEU:HD23	2:A:1760:LEU:O	1.98	0.64
2:A:867:GLY:HA2	2:A:870:THR:CG2	2.28	0.63
2:A:1251:LYS:O	2:A:1255:THR:CG2	2.40	0.63
2:A:1491:LYS:O	2:A:1491:LYS:HD3	1.98	0.63
2:A:936:MET:CE	2:A:945:LEU:CD1	2.77	0.63
2:A:1742:SER:O	2:A:1746:ILE:HG13	1.98	0.63
3:B:46:ARG:NH2	3:B:48:GLU:OE2	2.27	0.63
2:A:117:ARG:CA	2:A:120:ILE:HG22	2.28	0.63
2:A:132:ILE:HG22	2:A:227:VAL:HG11	1.81	0.63
2:A:793:LEU:HD13	2:A:793:LEU:O	1.98	0.63
2:A:960:LEU:HD21	2:A:964:LEU:CD2	2.29	0.63
2:A:1364:VAL:HG23	2:A:1370:CYS:HA	1.80	0.63
2:A:117:ARG:HA	2:A:120:ILE:CG2	2.28	0.63
2:A:1609:PHE:CE1	2:A:1613:ARG:HD2	2.33	0.63
2:A:1671:LYS:NZ	2:A:1682:GLU:OE2	2.32	0.63
2:A:1218:ARG:O	2:A:1219:LYS:CG	2.46	0.63
2:A:1485:MET:SD	2:A:1639:MET:CE	2.87	0.63
2:A:1650:LEU:HD13	2:A:1650:LEU:C	2.18	0.63
3:B:86:PHE:HZ	3:B:119:TYR:OH	1.80	0.63
1:C:103:GLY:HA3	1:C:109:ASP:OD1	1.99	0.62
2:A:754:ILE:HG12	2:A:787:PHE:CE1	2.33	0.62
2:A:798:MET:O	2:A:802:GLU:HB2	1.99	0.62
2:A:1639:MET:HE2	2:A:1639:MET:CA	2.29	0.62
2:A:849:TRP:HD1	2:A:850:PRO:HD2	0.56	0.62
2:A:1514:ASN:HD22	2:A:1515:GLN:N	1.97	0.62
2:A:960:LEU:HD23	2:A:964:LEU:CD2	2.22	0.62
2:A:962:LEU:O	2:A:966:LEU:HB2	2.00	0.62
2:A:1294:ALA:O	2:A:1297:PRO:HD2	2.00	0.62
2:A:822:GLU:HG2	2:A:835:ARG:NH2	2.14	0.62
2:A:1353:THR:HB	2:A:1379:ASN:O	2.00	0.62
2:A:1497:ILE:CG2	2:A:1572:TYR:CE2	2.76	0.62
2:A:266:LEU:O	2:A:1610:ARG:NH2	2.33	0.62
2:A:321:SER:HB2	2:A:372:ARG:O	1.99	0.62
2:A:1504:ILE:HG12	2:A:1505:GLN:H	1.65	0.62
1:C:34:VAL:CG2	1:C:142:ILE:HG12	2.29	0.62
2:A:1287:LYS:HD3	2:A:1287:LYS:C	2.19	0.62

*Continued on next page...*

*Continued from previous page...*

Atom-1	Atom-2	Interatomic distance (Å)	Clash overlap (Å)
2:A:1582:ASP:OD1	2:A:1622:ARG:CZ	2.47	0.62
3:B:28:THR:HG22	3:B:143:HIS:O	2.00	0.62
3:B:40:CYS:O	3:B:104:LEU:O	2.16	0.62
2:A:148:PRO:CB	2:A:152:THR:HG21	2.28	0.62
2:A:1219:LYS:HG3	2:A:1219:LYS:O	2.00	0.61
3:B:53:THR:HG22	3:B:54:PHE:N	2.15	0.61
2:A:117:ARG:HH11	2:A:117:ARG:CG	2.12	0.61
2:A:1308:ARG:CB	2:A:1308:ARG:HH21	2.13	0.61
2:A:1412:MET:CE	2:A:1434:TYR:HE1	1.99	0.61
1:C:107:LYS:HZ3	1:C:109:ASP:HB2	1.61	0.61
2:A:1531:THR:O	2:A:1534:VAL:HG23	1.99	0.61
2:A:812:ASP:O	2:A:816:VAL:HG23	2.00	0.61
2:A:862:SER:O	2:A:870:THR:CG2	2.48	0.61
3:B:153:ASP:OD1	3:B:154:MET:N	2.34	0.61
2:A:178:VAL:HG12	2:A:178:VAL:O	1.99	0.61
2:A:221:ALA:O	2:A:224:THR:HG23	2.01	0.61
2:A:1318:ILE:HG13	2:A:1319:PRO:CD	2.29	0.61
2:A:1522:MET:HE3	2:A:1623:LEU:CD2	2.30	0.61
2:A:1599:ILE:O	2:A:1603:PHE:N	2.30	0.61
3:B:51:ALA:CB	3:B:127:LEU:HD13	2.30	0.61
2:A:1367:ARG:HB2	2:A:1382:TRP:CZ2	2.36	0.61
1:C:65:LEU:HD21	1:C:67:TRP:CD1	2.35	0.61
2:A:737:ILE:CG2	2:A:797:ALA:N	2.63	0.61
2:A:967:LEU:HD23	2:A:968:LEU:N	2.16	0.61
1:C:59:ASN:O	1:C:63:PHE:N	2.30	0.61
1:C:105:PRO:HA	1:C:109:ASP:O	2.01	0.61
2:A:783:PHE:O	2:A:787:PHE:HD2	1.83	0.61
2:A:349:TRP:HA	2:A:349:TRP:CE3	2.36	0.60
2:A:849:TRP:CD1	2:A:850:PRO:CD	2.35	0.60
2:A:1304:PHE:CD2	2:A:1307:MET:HE1	2.36	0.60
2:A:1555:ILE:HD12	2:A:1593:MET:CE	2.31	0.60
2:A:1707:ILE:HG21	2:A:1736:GLY:HA3	1.84	0.60
1:C:62:GLN:C	1:C:132:PRO:HD2	2.21	0.60
2:A:132:ILE:CD1	2:A:166:GLU:OE2	2.43	0.60
2:A:738:TYR:N	2:A:797:ALA:HB1	2.17	0.60
2:A:1217:GLU:OE1	2:A:1217:GLU:HA	2.00	0.60
3:B:51:ALA:HB2	3:B:127:LEU:HA	1.83	0.60
2:A:835:ARG:HH21	2:A:835:ARG:CG	2.14	0.60
2:A:839:LEU:HD13	2:A:1334:ILE:HG23	1.84	0.60
2:A:1457:ILE:HG22	2:A:1756:ILE:HD12	1.81	0.60
3:B:38:ILE:HG22	3:B:142:ILE:HD13	1.82	0.60

*Continued on next page...*

*Continued from previous page...*

Atom-1	Atom-2	Interatomic distance (Å)	Clash overlap (Å)
3:B:82:GLU:OE1	3:B:82:GLU:N	2.35	0.60
2:A:1218:ARG:HG2	3:B:23:GLU:O	2.02	0.60
2:A:1498:PRO:HD3	2:A:1572:TYR:CZ	2.37	0.60
3:B:55:THR:HG22	3:B:56:GLU:N	2.16	0.60
2:A:1522:MET:HE3	2:A:1623:LEU:HD23	1.84	0.60
2:A:967:LEU:HD22	2:A:968:LEU:HD13	1.83	0.60
2:A:1179:TRP:CD1	2:A:1183:LYS:HE2	2.37	0.60
2:A:168:LEU:O	2:A:171:ILE:HG13	2.02	0.59
2:A:262:ILE:HG12	2:A:1617:ILE:CD1	2.32	0.59
2:A:337:PRO:O	2:A:338:ASP:HB2	2.02	0.59
2:A:1364:VAL:O	2:A:1364:VAL:HG13	2.00	0.59
3:B:57:TRP:HH2	3:B:142:ILE:CD1	2.09	0.59
3:B:165:VAL:O	3:B:169:VAL:HG23	2.02	0.59
1:C:66:ASN:ND2	1:C:79:MET:HE2	2.18	0.59
2:A:822:GLU:OE1	2:A:835:ARG:NH2	2.35	0.59
2:A:1218:ARG:HH21	2:A:1218:ARG:CG	2.14	0.59
2:A:157:TYR:C	2:A:160:THR:HG22	2.15	0.59
2:A:971:PHE:CE2	2:A:1458:ASP:OD2	2.56	0.59
2:A:1280:TYR:CE1	2:A:1283:LEU:HD11	2.37	0.59
2:A:1308:ARG:HH21	2:A:1308:ARG:HB2	1.67	0.59
2:A:1608:LEU:O	2:A:1612:ILE:HG12	2.03	0.59
2:A:1635:PHE:CE1	2:A:1638:MET:CE	2.86	0.59
3:B:129:PHE:HB2	3:B:132:TYR:HB3	1.84	0.59
2:A:174:ARG:HD3	2:A:182:THR:CB	2.29	0.59
2:A:1508:ILE:O	2:A:1512:VAL:HG23	2.03	0.59
2:A:1572:TYR:O	2:A:1575:THR:HG23	2.03	0.59
2:A:300:ARG:HG2	2:A:300:ARG:NH1	2.17	0.59
2:A:1509:PHE:HA	2:A:1568:SER:CB	2.32	0.59
3:B:125:ARG:HH11	3:B:125:ARG:CG	2.15	0.59
2:A:171:ILE:CG2	2:A:183:PHE:CD2	2.75	0.59
2:A:765:HIS:CD2	2:A:768:MET:HG3	2.38	0.59
3:B:32:TYR:CE2	3:B:113:TYR:HD1	2.17	0.59
2:A:1497:ILE:HG21	2:A:1572:TYR:CD2	2.24	0.59
2:A:1504:ILE:O	2:A:1508:ILE:HG13	2.03	0.58
2:A:207:LEU:CD1	2:A:209:ASN:H	2.16	0.58
2:A:389:GLY:O	2:A:393:LEU:HB2	2.03	0.58
2:A:1503:LYS:H	2:A:1503:LYS:HD2	1.66	0.58
1:C:31:GLU:O	1:C:53:ASN:N	2.37	0.58
2:A:295:SER:HB3	2:A:298:ASP:HB2	1.86	0.58
2:A:748:LEU:HD13	2:A:749:ALA:N	2.18	0.58
2:A:1318:ILE:N	2:A:1319:PRO:HD2	2.18	0.58

*Continued on next page...*

*Continued from previous page...*

Atom-1	Atom-2	Interatomic distance (Å)	Clash overlap (Å)
2:A:1408:TRP:CD1	2:A:1409:THR:HG23	2.39	0.58
2:A:1496:PRO:O	2:A:1497:ILE:CG1	2.51	0.58
1:C:65:LEU:HD23	1:C:65:LEU:O	2.04	0.58
1:C:65:LEU:HD21	1:C:67:TRP:HD1	1.67	0.58
2:A:748:LEU:HD22	2:A:748:LEU:O	2.04	0.58
2:A:1551:ASN:O	2:A:1555:ILE:HG13	2.03	0.58
2:A:742:MET:HB2	2:A:746:VAL:CB	2.30	0.58
2:A:1200:LEU:HD23	2:A:1201:MET:CE	2.34	0.58
2:A:287:GLU:HA	2:A:287:GLU:OE1	2.03	0.58
2:A:1450:ASN:HD22	2:A:1450:ASN:C	2.06	0.58
3:B:177:GLU:HA	3:B:177:GLU:OE1	2.04	0.58
2:A:1485:MET:CB	2:A:1639:MET:CE	2.81	0.58
2:A:153:LYS:HE3	2:A:157:TYR:OH	2.04	0.58
2:A:772:PHE:HE1	2:A:776:LEU:CD2	2.16	0.58
2:A:806:VAL:HG23	2:A:809:ASN:HB2	1.86	0.58
2:A:831:LEU:N	2:A:831:LEU:HD22	2.19	0.58
2:A:936:MET:CE	2:A:945:LEU:HD12	2.34	0.58
2:A:967:LEU:HD23	2:A:968:LEU:HD13	1.82	0.58
2:A:1717:PRO:O	2:A:1728:GLY:CA	2.51	0.58
2:A:810:ILE:HG13	2:A:811:PHE:N	2.18	0.57
2:A:1318:ILE:CG1	2:A:1319:PRO:CD	2.82	0.57
2:A:336:ASN:HD22	2:A:343:SER:HB3	1.61	0.57
2:A:737:ILE:CG2	2:A:797:ALA:CA	2.78	0.57
2:A:815:ILE:HD13	2:A:815:ILE:N	2.19	0.57
2:A:1179:TRP:NE1	2:A:1183:LYS:HE2	2.19	0.57
2:A:1218:ARG:HB3	2:A:1218:ARG:NH2	2.18	0.57
2:A:1539:GLN:O	2:A:1540:SER:OG	2.16	0.57
3:B:78:LEU:HD21	3:B:80:LEU:HD13	1.85	0.57
2:A:737:ILE:C	2:A:797:ALA:HB2	2.25	0.57
2:A:839:LEU:O	2:A:842:VAL:CG2	2.34	0.57
2:A:1740:PHE:O	2:A:1744:ILE:HG12	2.04	0.57
3:B:37:LYS:HB2	3:B:107:PHE:HD1	1.69	0.57
2:A:197:VAL:O	2:A:201:LEU:N	2.32	0.57
2:A:1764:SER:O	2:A:1767:THR:CG2	2.41	0.57
2:A:383:VAL:O	2:A:387:PHE:HB2	2.04	0.57
2:A:1359:PHE:HB3	2:A:1360:PRO:HD2	1.85	0.57
2:A:1440:PHE:O	2:A:1444:GLY:N	2.34	0.57
3:B:67:PHE:HE2	3:B:120:GLU:HG3	1.69	0.57
3:B:84:GLU:HA	3:B:87:GLU:HB2	1.87	0.57
2:A:1263:PHE:O	2:A:1266:VAL:HG12	2.05	0.57
2:A:1555:ILE:HD12	2:A:1593:MET:HE2	1.86	0.57

*Continued on next page...*

*Continued from previous page...*

Atom-1	Atom-2	Interatomic distance (Å)	Clash overlap (Å)
2:A:1598:LEU:HA	2:A:1601:THR:CG2	2.34	0.57
2:A:1668:TYR:O	2:A:1729:ASP:CB	2.52	0.57
2:A:1545:GLU:OE1	2:A:1545:GLU:HA	2.03	0.57
2:A:192:ASP:O	2:A:196:ILE:HG23	2.05	0.57
2:A:790:GLU:O	2:A:794:LYS:HB2	2.04	0.57
2:A:836:SER:O	2:A:839:LEU:HG	2.04	0.57
2:A:1185:CYS:O	2:A:1189:VAL:HG22	2.04	0.57
2:A:1531:THR:O	2:A:1534:VAL:HG22	2.04	0.57
2:A:278:ASN:HD21	2:A:329:THR:CB	2.18	0.57
3:B:51:ALA:CB	3:B:126:LEU:O	2.53	0.57
2:A:193:PHE:O	2:A:196:ILE:HG13	2.04	0.56
3:B:85:ARG:HH11	3:B:85:ARG:CG	2.14	0.56
3:B:187:ALA:HA	3:B:190:GLU:OE1	2.04	0.56
2:A:414:GLU:HG3	2:A:415:GLU:N	2.19	0.56
2:A:738:TYR:O	2:A:741:VAL:HG13	2.06	0.56
2:A:789:ALA:O	2:A:792:VAL:HG12	2.05	0.56
2:A:1694:ILE:HD11	2:A:1703:LEU:HD12	0.64	0.56
2:A:1703:LEU:O	2:A:1706:PRO:HD2	2.05	0.56
2:A:163:TYR:O	2:A:167:SER:HB2	2.05	0.56
3:B:46:ARG:HB3	3:B:48:GLU:OE2	2.05	0.56
2:A:116:ARG:O	2:A:120:ILE:HG22	2.06	0.56
2:A:320:ASP:OD1	2:A:320:ASP:N	2.39	0.56
2:A:1212:GLU:O	2:A:1213:ASP:HB3	2.05	0.56
2:A:1350:CYS:HB2	2:A:1424:GLN:HE22	1.71	0.56
2:A:1704:LEU:HD22	2:A:1708:LEU:HG	1.88	0.56
2:A:843:PHE:O	2:A:846:ALA:N	2.27	0.56
2:A:1206:SER:O	2:A:1209:LEU:HB2	2.05	0.56
2:A:971:PHE:HE2	2:A:1458:ASP:OD2	1.88	0.56
2:A:737:ILE:CA	2:A:797:ALA:HB2	2.36	0.56
2:A:840:LEU:C	2:A:842:VAL:N	2.57	0.56
2:A:1325:LEU:CD1	2:A:1329:LEU:HG	2.35	0.56
2:A:184:LEU:HD11	2:A:190:TRP:CD1	2.41	0.56
1:C:101:PHE:CZ	1:C:103:GLY:O	2.56	0.56
1:C:107:LYS:O	1:C:108:TYR:HB2	2.06	0.56
2:A:327:GLY:O	3:B:132:TYR:CE2	2.52	0.56
2:A:1358:ARG:NH1	2:A:1417:ASP:OD2	2.37	0.56
2:A:336:ASN:ND2	2:A:343:SER:OG	2.38	0.55
2:A:1704:LEU:HD22	2:A:1704:LEU:O	2.06	0.55
2:A:1358:ARG:NH2	2:A:1417:ASP:OD2	2.38	0.55
2:A:1589:SER:OG	2:A:1619:ARG:NH2	2.40	0.55
1:C:44:SER:O	1:C:117:VAL:HG22	2.07	0.55

*Continued on next page...*

*Continued from previous page...*

Atom-1	Atom-2	Interatomic distance (Å)	Clash overlap (Å)
2:A:207:LEU:HD13	2:A:209:ASN:N	2.22	0.55
2:A:278:ASN:ND2	2:A:329:THR:HB	2.21	0.55
2:A:132:ILE:CD1	2:A:166:GLU:CD	2.71	0.55
2:A:806:VAL:HG23	2:A:809:ASN:CB	2.37	0.55
2:A:1321:ILE:HD11	2:A:1456:ILE:HG12	1.89	0.55
2:A:1635:PHE:CE1	2:A:1638:MET:HE1	2.42	0.55
3:B:74:GLU:O	3:B:75:ASN:HB3	2.05	0.55
3:B:91:VAL:HG23	3:B:107:PHE:HB3	1.88	0.55
3:B:67:PHE:CD1	3:B:67:PHE:N	2.73	0.55
2:A:832:SER:O	2:A:835:ARG:HB3	2.06	0.55
2:A:849:TRP:CH2	2:A:1326:LEU:HB3	2.42	0.55
2:A:1283:LEU:HD23	2:A:1283:LEU:N	2.03	0.55
2:A:1514:ASN:ND2	2:A:1516:ALA:H	2.05	0.55
2:A:286:LEU:HD22	2:A:286:LEU:O	2.07	0.54
2:A:806:VAL:HG23	2:A:809:ASN:H	1.72	0.54
2:A:1474:MET:HE1	2:A:1642:PRO:HB2	1.89	0.54
3:B:48:GLU:HG2	3:B:49:THR:N	2.22	0.54
2:A:116:ARG:NH1	2:A:176:PHE:CB	2.65	0.54
2:A:1512:VAL:HG11	2:A:1565:LYS:HG3	1.89	0.54
2:A:1640:SER:HB3	2:A:1761:GLU:HG3	1.89	0.54
2:A:1681:PHE:HD1	2:A:1687:SER:HG	1.53	0.54
2:A:1707:ILE:HD13	2:A:1740:PHE:CE2	2.42	0.54
1:C:59:ASN:HB3	1:C:62:GLN:CB	2.34	0.54
1:C:107:LYS:O	1:C:107:LYS:HG2	2.08	0.54
2:A:139:ASN:C	2:A:139:ASN:HD22	2.06	0.54
2:A:806:VAL:CG2	2:A:809:ASN:CB	2.85	0.54
2:A:184:LEU:CD1	2:A:190:TRP:CD1	2.91	0.54
2:A:790:GLU:O	2:A:794:LYS:N	2.38	0.54
2:A:798:MET:O	2:A:799:ASP:HB2	2.07	0.54
2:A:895:CYS:HB2	2:A:938:VAL:CG1	2.38	0.54
3:B:90:VAL:HG11	3:B:106:ILE:HD11	1.90	0.54
2:A:399:ALA:HB3	2:A:1762:ASN:HD22	1.63	0.54
2:A:803:TYR:CE1	2:A:809:ASN:ND2	2.68	0.54
2:A:1270:LEU:HD13	2:A:1270:LEU:C	2.26	0.54
2:A:217:ARG:CZ	2:A:217:ARG:CB	2.85	0.54
3:B:26:SER:HB2	3:B:39:LEU:H	1.71	0.54
1:C:33:THR:O	1:C:50:CYS:CA	2.55	0.54
2:A:145:MET:CE	2:A:145:MET:CA	2.85	0.54
2:A:196:ILE:CD1	2:A:197:VAL:N	2.70	0.54
2:A:146:ASN:O	2:A:147:ASN:HB3	2.09	0.53
2:A:1186:TYR:CZ	2:A:1190:GLU:OE2	2.62	0.53

*Continued on next page...*



*Continued from previous page...*

Atom-1	Atom-2	Interatomic distance (Å)	Clash overlap (Å)
1:C:62:GLN:HB3	1:C:132:PRO:HD2	1.90	0.53
2:A:810:ILE:O	2:A:814:LEU:CD1	2.43	0.53
2:A:1477:GLU:OE2	2:A:1477:GLU:HA	2.07	0.53
2:A:1535:GLU:HG2	2:A:1547:LEU:CD1	2.39	0.53
3:B:119:TYR:O	3:B:142:ILE:N	2.39	0.53
2:A:867:GLY:O	2:A:870:THR:HG23	2.09	0.53
2:A:900:ASN:OD1	2:A:902:ASP:N	2.38	0.53
3:B:71:LEU:CD2	3:B:106:ILE:HD11	2.37	0.53
4:E:2:NAG:HO3	4:E:2:NAG:C7	2.13	0.53
1:C:135:ARG:HH21	1:C:135:ARG:CG	2.14	0.53
2:A:187:PRO:HA	2:A:190:TRP:CE3	2.44	0.53
2:A:247:ASP:OD1	2:A:1629:GLY:C	2.47	0.53
2:A:741:VAL:HG23	2:A:742:MET:N	2.22	0.53
2:A:1732:ASN:OD1	2:A:1735:VAL:HB	2.08	0.53
2:A:1495:LYS:CE	2:A:1495:LYS:HA	2.38	0.53
3:B:89:ARG:NH1	3:B:110:ASN:OD1	2.42	0.53
2:A:1298:LEU:HD12	2:A:1301:LEU:HD12	1.89	0.53
2:A:1637:LEU:HD22	2:A:1637:LEU:C	2.28	0.53
2:A:772:PHE:HD1	2:A:772:PHE:O	1.92	0.53
3:B:178:MET:O	3:B:182:TYR:HB3	2.08	0.53
2:A:114:PRO:O	2:A:118:ILE:HG12	2.09	0.53
2:A:175:GLY:O	2:A:178:VAL:HB	2.09	0.53
2:A:1532:MET:CE	2:A:1616:ARG:HB2	2.39	0.52
2:A:123:LEU:HD23	2:A:123:LEU:C	2.29	0.52
2:A:176:PHE:O	2:A:178:VAL:HG23	2.08	0.52
2:A:1365:PRO:O	2:A:1424:GLN:CB	2.57	0.52
2:A:1408:TRP:CD1	2:A:1409:THR:N	2.77	0.52
2:A:165:PHE:O	2:A:169:VAL:HG13	2.09	0.52
1:C:32:VAL:CG1	1:C:50:CYS:SG	2.98	0.52
2:A:207:LEU:CD1	2:A:209:ASN:N	2.73	0.52
2:A:300:ARG:NH1	3:B:130:GLU:OE2	2.43	0.52
2:A:734:LYS:CE	2:A:799:ASP:OD2	2.58	0.52
2:A:1495:LYS:CA	2:A:1495:LYS:HE3	2.39	0.52
2:A:849:TRP:HH2	2:A:1326:LEU:HB3	1.74	0.52
2:A:1757:ALA:O	2:A:1761:GLU:HG2	2.09	0.52
3:B:57:TRP:CH2	3:B:142:ILE:HD13	2.40	0.52
2:A:114:PRO:HG2	2:A:115:LEU:H	1.74	0.52
2:A:262:ILE:CG1	2:A:1617:ILE:CD1	2.88	0.52
2:A:397:ILE:O	2:A:401:VAL:HG23	2.09	0.52
2:A:1293:ARG:O	2:A:1295:LEU:N	2.42	0.52
2:A:890:LYS:NZ	2:A:890:LYS:CB	2.73	0.52

*Continued on next page...*



*Continued from previous page...*

Atom-1	Atom-2	Interatomic distance (Å)	Clash overlap (Å)
2:A:1512:VAL:CG1	2:A:1565:LYS:HG3	2.39	0.52
2:A:1752:VAL:O	2:A:1756:ILE:HG12	2.08	0.52
2:A:159:PHE:O	2:A:163:TYR:CD2	2.62	0.52
2:A:329:THR:CG2	2:A:330:CYS:N	2.71	0.52
2:A:338:ASP:O	2:A:339:TYR:HB2	2.10	0.52
2:A:1294:ALA:O	2:A:1297:PRO:CD	2.57	0.52
2:A:1308:ARG:CB	2:A:1308:ARG:NH2	2.73	0.52
2:A:1349:GLU:HG3	2:A:1351:ILE:CG2	2.40	0.52
2:A:1733:PRO:O	2:A:1737:ILE:HG13	2.10	0.52
3:B:75:ASN:CG	3:B:76:GLU:H	2.13	0.52
2:A:217:ARG:CG	2:A:217:ARG:HH11	2.22	0.52
2:A:224:THR:HA	2:A:227:VAL:CG2	2.40	0.51
2:A:838:ARG:NH1	2:A:838:ARG:CG	2.73	0.51
2:A:279:SER:O	2:A:280:LEU:HD12	2.10	0.51
2:A:290:MET:HG3	2:A:333:ILE:HG21	1.92	0.51
2:A:1495:LYS:CE	2:A:1495:LYS:CA	2.86	0.51
3:B:60:ARG:HD2	3:B:60:ARG:O	2.09	0.51
1:C:47:ARG:NH2	1:C:111:SER:OG	2.43	0.51
2:A:293:LEU:CD1	2:A:298:ASP:CB	2.56	0.51
2:A:300:ARG:HH11	2:A:300:ARG:CG	2.18	0.51
2:A:810:ILE:HG13	2:A:811:PHE:H	1.75	0.51
2:A:1408:TRP:NE1	2:A:1409:THR:HG22	2.25	0.51
2:A:1509:PHE:N	2:A:1568:SER:OG	2.43	0.51
3:B:85:ARG:HG2	3:B:85:ARG:NH1	2.18	0.51
2:A:1408:TRP:NE1	2:A:1409:THR:CG2	2.73	0.51
2:A:1707:ILE:HD13	2:A:1740:PHE:HE2	1.74	0.51
3:B:58:THR:HG22	3:B:69:LYS:CA	2.39	0.51
2:A:831:LEU:N	2:A:831:LEU:CD2	2.73	0.51
2:A:1281:SER:O	2:A:1282:ASP:HB2	2.10	0.51
2:A:1499:ARG:HG2	2:A:1509:PHE:CD1	2.45	0.51
2:A:1509:PHE:CA	2:A:1568:SER:HB3	2.40	0.51
2:A:144:THR:O	2:A:144:THR:HG22	2.09	0.51
2:A:207:LEU:HD12	2:A:213:LEU:CG	2.41	0.51
2:A:1680:ASN:O	2:A:1686:ASN:HB3	2.11	0.51
2:A:415:GLU:OE2	2:A:416:ALA:HB2	2.09	0.51
2:A:840:LEU:O	2:A:841:ARG:C	2.48	0.51
2:A:896:VAL:CG1	2:A:905:LEU:HD13	2.41	0.51
2:A:1190:GLU:HA	2:A:1190:GLU:OE1	2.11	0.51
2:A:1340:VAL:O	2:A:1344:ALA:HB2	2.11	0.51
2:A:117:ARG:CG	2:A:117:ARG:NH1	2.73	0.51
2:A:852:LEU:CD1	2:A:1327:VAL:HG13	2.40	0.51

*Continued on next page...*

*Continued from previous page...*

Atom-1	Atom-2	Interatomic distance (Å)	Clash overlap (Å)
2:A:1293:ARG:HH21	2:A:1293:ARG:HB3	1.75	0.51
3:B:32:TYR:CD1	3:B:32:TYR:C	2.85	0.51
2:A:843:PHE:O	2:A:844:LYS:C	2.48	0.51
2:A:278:ASN:HD21	2:A:329:THR:HB	1.76	0.50
2:A:740:ILE:O	2:A:740:ILE:HG22	2.10	0.50
2:A:1218:ARG:CG	2:A:1218:ARG:NH2	2.73	0.50
2:A:1301:LEU:HD23	2:A:1307:MET:HG2	1.93	0.50
2:A:1527:LEU:O	2:A:1530:VAL:HG12	2.11	0.50
2:A:761:MET:CE	2:A:839:LEU:HB3	2.41	0.50
2:A:803:TYR:CZ	2:A:809:ASN:ND2	2.74	0.50
2:A:901:ASP:OD1	2:A:901:ASP:N	2.44	0.50
2:A:1460:PHE:HD2	2:A:1756:ILE:HG13	1.76	0.50
2:A:1527:LEU:O	2:A:1530:VAL:CG1	2.58	0.50
2:A:1606:PRO:O	2:A:1609:PHE:HB3	2.11	0.50
1:C:128:TYR:HB3	1:C:137:ARG:HE	1.77	0.50
2:A:164:THR:O	2:A:168:LEU:N	2.35	0.50
2:A:762:ALA:O	2:A:1392:VAL:CG2	2.60	0.50
3:B:112:THR:CG2	3:B:113:TYR:N	2.74	0.50
2:A:272:LYS:NZ	2:A:345:ASP:OD2	2.44	0.50
2:A:762:ALA:O	2:A:1392:VAL:HG21	2.11	0.50
3:B:104:LEU:N	3:B:104:LEU:CD2	2.73	0.50
2:A:329:THR:HG23	2:A:330:CYS:N	2.27	0.50
2:A:1412:MET:HE3	2:A:1434:TYR:CD1	2.46	0.50
3:B:129:PHE:HB2	3:B:132:TYR:O	2.12	0.50
2:A:207:LEU:HD11	2:A:209:ASN:H	1.76	0.50
2:A:336:ASN:HB2	2:A:343:SER:OG	2.11	0.50
2:A:405:TYR:CD1	2:A:405:TYR:C	2.85	0.50
2:A:1215:TYR:HD1	2:A:1218:ARG:HD3	1.76	0.50
2:A:1573:TYR:OH	2:A:1583:PHE:HB2	2.11	0.50
3:B:46:ARG:HH21	3:B:48:GLU:CD	2.14	0.50
2:A:326:GLU:HG3	3:B:45:ARG:HG3	1.93	0.50
2:A:1514:ASN:ND2	2:A:1515:GLN:N	2.60	0.50
1:C:34:VAL:HG21	1:C:142:ILE:HG13	1.93	0.50
2:A:151:TRP:CE3	2:A:151:TRP:C	2.85	0.50
3:B:85:ARG:CG	3:B:85:ARG:NH1	2.73	0.50
2:A:321:SER:CB	2:A:375:GLY:HA2	2.34	0.50
2:A:766:HIS:CD2	2:A:766:HIS:C	2.86	0.50
2:A:1485:MET:CB	2:A:1639:MET:HE3	2.24	0.50
3:B:112:THR:HG22	3:B:113:TYR:H	1.74	0.50
2:A:117:ARG:C	2:A:120:ILE:HG22	2.32	0.49
2:A:1282:ASP:HA	2:A:1287:LYS:HB2	1.94	0.49

*Continued on next page...*

*Continued from previous page...*

Atom-1	Atom-2	Interatomic distance (Å)	Clash overlap (Å)
2:A:1360:PRO:O	2:A:1361:ALA:HB3	2.12	0.49
2:A:1514:ASN:HD22	2:A:1515:GLN:H	1.60	0.49
2:A:207:LEU:HD11	2:A:209:ASN:CG	2.33	0.49
3:B:38:ILE:CG2	3:B:142:ILE:HD13	2.42	0.49
2:A:131:LEU:HD22	2:A:131:LEU:C	2.33	0.49
2:A:1369:GLU:OE1	2:A:1369:GLU:HA	2.12	0.49
2:A:1502:ASN:HB3	2:A:1504:ILE:HD13	1.89	0.49
2:A:1635:PHE:HE1	2:A:1638:MET:HE1	1.75	0.49
3:B:180:TYR:CD1	3:B:180:TYR:C	2.85	0.49
1:C:34:VAL:HG21	1:C:142:ILE:CG1	2.42	0.49
1:C:52:PHE:CD1	1:C:52:PHE:C	2.85	0.49
2:A:151:TRP:CE3	2:A:152:THR:HA	2.47	0.49
2:A:1509:PHE:CD1	2:A:1509:PHE:C	2.85	0.49
3:B:144:ILE:O	3:B:144:ILE:HG13	2.12	0.49
2:A:183:PHE:C	2:A:183:PHE:CD1	2.85	0.49
2:A:834:LEU:HD23	2:A:834:LEU:C	2.14	0.49
2:A:879:ILE:O	2:A:882:VAL:HG12	2.13	0.49
2:A:1287:LYS:HE3	2:A:1287:LYS:O	2.12	0.49
3:B:182:TYR:CD1	3:B:182:TYR:C	2.85	0.49
2:A:361:ASP:OD2	2:A:929:ILE:CG2	2.60	0.49
2:A:899:ILE:CG2	2:A:938:VAL:HG13	2.43	0.49
2:A:945:LEU:HD23	2:A:949:MET:HE2	1.94	0.49
2:A:1205:SER:O	2:A:1296:ARG:NH1	2.46	0.49
2:A:1640:SER:CB	2:A:1761:GLU:HG3	2.42	0.49
1:C:54:SER:HB2	1:C:134:ASP:OD2	2.13	0.49
2:A:117:ARG:O	2:A:120:ILE:HG22	2.12	0.49
2:A:758:THR:HG23	2:A:759:LEU:N	2.28	0.49
2:A:911:ASN:HD22	2:A:911:ASN:C	2.12	0.49
2:A:1220:LYS:NZ	3:B:27:GLU:OE2	2.46	0.49
1:C:128:TYR:CE2	1:C:137:ARG:NH2	2.74	0.49
2:A:125:HIS:ND1	2:A:126:SER:N	2.60	0.49
3:B:54:PHE:CE1	3:B:124:TYR:CD2	2.87	0.49
3:B:89:ARG:O	3:B:108:ILE:HA	2.13	0.49
3:B:126:LEU:HD13	3:B:128:PHE:CE1	2.46	0.49
2:A:291:ASN:ND2	2:A:292:THR:N	2.60	0.49
2:A:750:ILE:O	2:A:753:CYS:HB3	2.12	0.49
2:A:1293:ARG:CB	2:A:1293:ARG:NH2	2.73	0.49
2:A:1532:MET:HG3	2:A:1616:ARG:HH12	1.77	0.49
1:C:34:VAL:CG2	1:C:142:ILE:CG1	2.91	0.48
2:A:1573:TYR:CD1	2:A:1573:TYR:C	2.85	0.48
2:A:734:LYS:CE	2:A:799:ASP:CG	2.80	0.48

*Continued on next page...*

*Continued from previous page...*

Atom-1	Atom-2	Interatomic distance (Å)	Clash overlap (Å)
2:A:1218:ARG:CZ	2:A:1218:ARG:CB	2.91	0.48
2:A:1509:PHE:CA	2:A:1568:SER:CB	2.92	0.48
2:A:1667:ALA:O	2:A:1668:TYR:HB2	2.13	0.48
2:A:349:TRP:HA	2:A:349:TRP:HE3	1.78	0.48
2:A:833:VAL:HG13	2:A:834:LEU:N	2.28	0.48
2:A:842:VAL:O	2:A:845:LEU:HG	2.13	0.48
2:A:890:LYS:HZ3	2:A:890:LYS:HB3	1.76	0.48
2:A:1321:ILE:CD1	2:A:1456:ILE:HG12	2.42	0.48
2:A:1574:PHE:CD1	2:A:1580:ILE:HD11	2.36	0.48
2:A:1760:LEU:HD23	2:A:1760:LEU:C	2.33	0.48
2:A:116:ARG:NH2	2:A:176:PHE:HB2	2.28	0.48
1:C:34:VAL:HG23	1:C:35:PRO:N	2.29	0.48
2:A:339:TYR:HB2	2:A:341:TYR:CD2	2.49	0.48
2:A:803:TYR:CE2	2:A:809:ASN:OD1	2.67	0.48
2:A:1318:ILE:HG13	2:A:1319:PRO:N	2.28	0.48
2:A:1407:GLY:N	6:A:2007:9SL:O01	2.47	0.48
2:A:1497:ILE:HG22	2:A:1498:PRO:CD	2.44	0.48
2:A:1517:PHE:CD1	2:A:1517:PHE:C	2.85	0.48
2:A:1254:PHE:HD1	2:A:1260:TRP:CE2	2.32	0.48
2:A:1373:LEU:O	2:A:1377:SER:HB2	2.13	0.48
2:A:1408:TRP:CD1	2:A:1409:THR:CG2	2.97	0.48
3:B:174:LEU:O	3:B:178:MET:HG2	2.13	0.48
2:A:284:GLU:HB3	2:A:289:ILE:HD11	1.95	0.48
2:A:293:LEU:CD1	2:A:298:ASP:C	2.81	0.48
1:C:61:LYS:HA	1:C:85:MET:SD	2.54	0.48
1:C:107:LYS:CD	1:C:109:ASP:HB2	2.41	0.48
2:A:286:LEU:HD11	2:A:333:ILE:HG13	1.96	0.48
2:A:327:GLY:HA3	3:B:134:HIS:CD2	2.48	0.48
2:A:733:PHE:O	2:A:737:ILE:HG12	2.14	0.48
2:A:1503:LYS:CD	2:A:1503:LYS:N	2.73	0.48
2:A:963:PHE:CD1	2:A:963:PHE:C	2.87	0.48
2:A:1191:HIS:ND1	2:A:1192:SER:N	2.61	0.48
2:A:1532:MET:SD	2:A:1620:ILE:CD1	2.98	0.48
2:A:1641:LEU:HD23	2:A:1641:LEU:HA	1.73	0.48
3:B:53:THR:CG2	3:B:54:PHE:N	2.77	0.48
2:A:322:GLY:HA3	2:A:323:GLN:HG2	1.95	0.47
2:A:1301:LEU:HD22	2:A:1311:VAL:HG21	1.95	0.47
2:A:116:ARG:HH22	2:A:176:PHE:HB2	1.79	0.47
2:A:217:ARG:NH1	2:A:217:ARG:CB	2.75	0.47
2:A:273:HIS:O	2:A:314:LEU:HD12	2.13	0.47
2:A:279:SER:C	2:A:280:LEU:HD12	2.34	0.47

*Continued on next page...*

*Continued from previous page...*

Atom-1	Atom-2	Interatomic distance (Å)	Clash overlap (Å)
2:A:1213:ASP:HB3	2:A:1663:MET:HE3	1.96	0.47
2:A:1503:LYS:H	2:A:1503:LYS:HD3	1.78	0.47
2:A:1710:SER:O	2:A:1711:LYS:HG2	2.14	0.47
2:A:783:PHE:O	2:A:787:PHE:CD2	2.65	0.47
3:B:88:GLY:O	3:B:89:ARG:HB2	2.14	0.47
2:A:196:ILE:O	2:A:200:TYR:CD1	2.65	0.47
2:A:247:ASP:OD2	2:A:1629:GLY:HA3	2.15	0.47
2:A:1242:LEU:O	2:A:1246:ILE:HG12	2.15	0.47
2:A:1460:PHE:CE2	2:A:1753:ASN:ND2	2.82	0.47
2:A:1509:PHE:HB2	2:A:1568:SER:CB	2.31	0.47
2:A:1574:PHE:CD1	2:A:1580:ILE:CD1	2.91	0.47
2:A:116:ARG:CZ	2:A:176:PHE:HB2	2.44	0.47
2:A:248:VAL:CG2	2:A:400:VAL:HG21	2.44	0.47
2:A:1459:ASN:O	2:A:1459:ASN:ND2	2.48	0.47
2:A:1635:PHE:CD1	2:A:1638:MET:CE	2.97	0.47
2:A:1719:LYS:H	2:A:1728:GLY:N	2.13	0.47
3:B:55:THR:CG2	3:B:56:GLU:N	2.77	0.47
2:A:285:THR:O	2:A:289:ILE:HG12	2.15	0.47
2:A:1179:TRP:HE1	2:A:1183:LYS:HE2	1.80	0.47
2:A:1318:ILE:HG12	2:A:1319:PRO:HD3	1.96	0.47
3:B:101:LEU:O	3:B:103:ASP:N	2.43	0.47
4:E:1:NAG:H82	4:E:1:NAG:C1	2.44	0.47
2:A:147:ASN:HD22	2:A:147:ASN:C	2.18	0.47
2:A:361:ASP:OD2	2:A:929:ILE:CB	2.63	0.47
2:A:840:LEU:C	2:A:842:VAL:H	2.18	0.47
2:A:890:LYS:CB	2:A:890:LYS:HZ3	2.28	0.47
2:A:761:MET:HE3	2:A:839:LEU:HB3	1.97	0.47
2:A:945:LEU:HD23	2:A:949:MET:CE	2.45	0.47
2:A:259:PHE:HB2	2:A:354:LEU:HD22	1.97	0.47
2:A:1502:ASN:CB	2:A:1504:ILE:HD11	2.20	0.47
2:A:114:PRO:CG	2:A:115:LEU:H	2.27	0.46
2:A:259:PHE:HB3	2:A:354:LEU:HD21	1.97	0.46
2:A:276:PHE:CE2	2:A:280:LEU:HD21	2.47	0.46
2:A:795:LEU:HD13	2:A:803:TYR:CE2	2.49	0.46
2:A:1366:ASN:OD1	2:A:1366:ASN:N	2.46	0.46
2:A:1419:VAL:HG12	2:A:1425:PRO:HA	1.96	0.46
2:A:171:ILE:HD12	2:A:172:LEU:N	2.30	0.46
2:A:204:PHE:O	2:A:205:VAL:C	2.53	0.46
2:A:321:SER:OG	2:A:322:GLY:N	2.48	0.46
2:A:954:ILE:O	2:A:958:VAL:HG23	2.16	0.46
2:A:1420:ASN:HB3	2:A:1423:LYS:HG3	1.97	0.46

*Continued on next page...*

*Continued from previous page...*

Atom-1	Atom-2	Interatomic distance (Å)	Clash overlap (Å)
3:B:51:ALA:CB	3:B:127:LEU:HA	2.44	0.46
2:A:219:LEU:O	2:A:222:LEU:HB2	2.14	0.46
2:A:333:ILE:HG22	2:A:334:GLY:N	2.30	0.46
2:A:734:LYS:CE	2:A:799:ASP:OD1	2.38	0.46
2:A:1200:LEU:HD23	2:A:1201:MET:HE2	1.98	0.46
2:A:1509:PHE:HA	2:A:1568:SER:HB3	1.95	0.46
2:A:1623:LEU:HD23	2:A:1623:LEU:HA	1.75	0.46
2:A:132:ILE:CD1	2:A:166:GLU:HB3	2.23	0.46
2:A:176:PHE:HD2	2:A:178:VAL:HG21	1.80	0.46
2:A:217:ARG:HG2	2:A:217:ARG:HH11	1.80	0.46
2:A:315:CYS:CB	2:A:324:CYS:SG	3.00	0.46
2:A:399:ALA:O	2:A:403:MET:HB2	2.14	0.46
2:A:825:LEU:HD22	2:A:825:LEU:HA	1.79	0.46
2:A:1218:ARG:HB3	2:A:1218:ARG:CZ	2.45	0.46
2:A:1508:ILE:CG2	2:A:1564:LEU:CD1	2.93	0.46
2:A:1709:ASN:HB2	2:A:1714:ASP:CB	2.41	0.46
1:C:34:VAL:CG1	1:C:50:CYS:SG	2.96	0.46
3:B:66:GLU:C	3:B:67:PHE:CD1	2.88	0.46
2:A:133:MET:SD	2:A:133:MET:C	2.94	0.46
2:A:398:LEU:HD12	2:A:960:LEU:HD11	1.97	0.46
2:A:909:HIS:HD2	2:A:911:ASN:N	2.07	0.46
2:A:1349:GLU:HG3	2:A:1351:ILE:HG22	1.98	0.46
2:A:1497:ILE:HG22	2:A:1498:PRO:HD2	1.97	0.46
2:A:1571:HIS:CD2	2:A:1571:HIS:H	2.33	0.46
2:A:206:ASN:OD1	2:A:206:ASN:N	2.48	0.46
2:A:218:VAL:CG1	2:A:879:ILE:HG23	2.46	0.46
2:A:388:LEU:O	2:A:388:LEU:HD13	2.15	0.46
2:A:395:ASN:ND2	2:A:1755:TYR:CD1	2.83	0.46
2:A:214:ARG:HA	2:A:214:ARG:HD3	1.61	0.46
2:A:293:LEU:HD12	2:A:298:ASP:CG	2.30	0.46
2:A:741:VAL:CG2	2:A:742:MET:N	2.78	0.46
2:A:854:MET:O	2:A:858:ILE:HG13	2.16	0.46
2:A:931:THR:HG22	2:A:948:TYR:OH	2.16	0.46
3:B:54:PHE:CD2	3:B:124:TYR:HB2	2.51	0.46
2:A:169:VAL:HG23	2:A:170:LYS:N	2.31	0.46
2:A:964:LEU:HD13	2:A:964:LEU:HA	1.80	0.46
2:A:1308:ARG:NH2	2:A:1308:ARG:HB3	2.30	0.46
3:B:154:MET:O	3:B:158:VAL:HG23	2.16	0.46
2:A:136:ILE:HG23	2:A:137:LEU:N	2.30	0.45
2:A:902:ASP:HB3	2:A:904:THR:HG22	1.97	0.45
2:A:971:PHE:CD1	2:A:971:PHE:C	2.88	0.45

*Continued on next page...*

*Continued from previous page...*

Atom-1	Atom-2	Interatomic distance (Å)	Clash overlap (Å)
2:A:361:ASP:OD2	2:A:929:ILE:HB	2.15	0.45
2:A:788:ALA:HA	2:A:816:VAL:HG11	1.97	0.45
2:A:1179:TRP:CD1	2:A:1183:LYS:CE	2.99	0.45
2:A:1325:LEU:HD12	2:A:1329:LEU:HG	1.99	0.45
3:B:54:PHE:CE2	3:B:124:TYR:CB	2.96	0.45
2:A:116:ARG:NH1	2:A:176:PHE:HA	2.29	0.45
2:A:336:ASN:HD22	2:A:343:SER:CB	2.21	0.45
2:A:772:PHE:O	2:A:772:PHE:CD1	2.70	0.45
2:A:1212:GLU:O	2:A:1213:ASP:CB	2.64	0.45
2:A:1280:TYR:O	2:A:1283:LEU:HD21	2.17	0.45
3:B:67:PHE:CD2	3:B:120:GLU:HG3	2.49	0.45
2:A:132:ILE:CD1	2:A:166:GLU:CG	2.94	0.45
2:A:276:PHE:N	2:A:329:THR:O	2.46	0.45
2:A:1404:THR:O	2:A:1405:PHE:HB2	2.15	0.45
2:A:1273:LEU:HD12	2:A:1273:LEU:C	2.36	0.45
2:A:1511:LEU:C	2:A:1511:LEU:CD2	2.85	0.45
2:A:1628:LYS:CD	2:A:1628:LYS:C	2.85	0.45
2:A:248:VAL:HG21	2:A:400:VAL:HG21	1.98	0.45
2:A:314:LEU:HD12	2:A:314:LEU:HA	1.86	0.45
2:A:956:ASN:N	2:A:956:ASN:HD22	2.14	0.45
2:A:1508:ILE:HG21	2:A:1564:LEU:CD1	2.46	0.45
2:A:147:ASN:HD22	2:A:147:ASN:N	2.13	0.45
2:A:217:ARG:CG	2:A:217:ARG:NH1	2.79	0.45
2:A:846:ALA:HA	2:A:852:LEU:HD23	1.99	0.45
2:A:1273:LEU:O	2:A:1277:THR:OG1	2.34	0.45
2:A:1295:LEU:CD1	2:A:1298:LEU:CD2	2.86	0.45
2:A:1364:VAL:CG2	2:A:1370:CYS:HA	2.46	0.45
3:B:38:ILE:HB	3:B:106:ILE:HG22	1.99	0.45
3:B:128:PHE:CD1	3:B:128:PHE:N	2.84	0.45
2:A:759:LEU:HD22	2:A:759:LEU:HA	1.74	0.45
2:A:1293:ARG:C	2:A:1295:LEU:N	2.70	0.45
2:A:1405:PHE:HE1	2:A:1441:ILE:HD13	1.81	0.45
2:A:1607:THR:HG23	2:A:1610:ARG:NH1	2.25	0.45
2:A:123:LEU:C	2:A:123:LEU:CD2	2.86	0.45
2:A:147:ASN:C	2:A:147:ASN:ND2	2.70	0.45
2:A:754:ILE:HG12	2:A:787:PHE:HE1	1.77	0.45
2:A:1444:GLY:O	2:A:1448:THR:OG1	2.32	0.45
2:A:1497:ILE:HG12	2:A:1572:TYR:HB3	1.98	0.45
2:A:1681:PHE:HD1	2:A:1687:SER:OG	1.99	0.45
2:A:766:HIS:CD2	2:A:766:HIS:O	2.70	0.45
2:A:843:PHE:C	2:A:845:LEU:N	2.70	0.45

*Continued on next page...*



*Continued from previous page...*

Atom-1	Atom-2	Interatomic distance (Å)	Clash overlap (Å)
2:A:936:MET:HE2	2:A:945:LEU:HD12	1.99	0.45
2:A:1343:PHE:HB3	2:A:1347:PHE:CE1	2.51	0.45
2:A:1355:ASP:N	2:A:1355:ASP:OD1	2.50	0.45
2:A:1710:SER:O	2:A:1711:LYS:HE3	2.17	0.45
1:C:55:CYS:O	1:C:56:TYR:CD2	2.70	0.44
2:A:163:TYR:O	2:A:166:GLU:HG3	2.17	0.44
2:A:176:PHE:O	2:A:176:PHE:CG	2.70	0.44
2:A:332:LYS:C	2:A:333:ILE:HG12	2.37	0.44
2:A:371:LEU:O	2:A:375:GLY:N	2.44	0.44
2:A:1530:VAL:HA	2:A:1533:MET:HG3	1.99	0.44
2:A:1719:LYS:H	2:A:1728:GLY:H	1.65	0.44
2:A:191:LEU:C	2:A:191:LEU:CD2	2.85	0.44
2:A:279:SER:C	2:A:280:LEU:CD1	2.86	0.44
2:A:280:LEU:CD1	2:A:280:LEU:N	2.80	0.44
2:A:854:MET:HE2	2:A:854:MET:HB2	1.88	0.44
2:A:1491:LYS:C	2:A:1491:LYS:CD	2.86	0.44
2:A:1496:PRO:C	2:A:1497:ILE:CG1	2.85	0.44
1:C:131:ASN:O	1:C:134:ASP:N	2.51	0.44
2:A:300:ARG:NH1	2:A:300:ARG:CG	2.75	0.44
2:A:794:LYS:CG	2:A:803:TYR:CE1	2.75	0.44
2:A:1611:VAL:O	2:A:1614:LEU:HB2	2.17	0.44
1:C:55:CYS:O	1:C:56:TYR:CG	2.69	0.44
2:A:121:LYS:HB2	2:A:121:LYS:HE3	1.58	0.44
2:A:164:THR:HG21	2:A:200:TYR:HH	1.76	0.44
2:A:197:VAL:O	2:A:201:LEU:HB2	2.18	0.44
2:A:231:LEU:HD12	2:A:231:LEU:HA	1.73	0.44
2:A:834:LEU:O	2:A:837:PHE:CB	2.60	0.44
2:A:1270:LEU:C	2:A:1270:LEU:CD1	2.85	0.44
2:A:1298:LEU:HD12	2:A:1301:LEU:CD1	2.48	0.44
2:A:1691:LEU:HD13	2:A:1743:TYR:CE2	2.52	0.44
3:B:141:LYS:HZ2	3:B:141:LYS:HB3	1.81	0.44
2:A:743:ASP:N	2:A:744:PRO:HD2	2.32	0.44
2:A:1281:SER:OG	2:A:1282:ASP:OD1	2.32	0.44
2:A:1364:VAL:HG23	2:A:1370:CYS:CA	2.47	0.44
2:A:1569:LEU:HB2	2:A:1573:TYR:HB2	2.00	0.44
2:A:738:TYR:O	2:A:738:TYR:CD1	2.70	0.44
2:A:1280:TYR:O	2:A:1280:TYR:CD1	2.70	0.44
2:A:1280:TYR:O	2:A:1280:TYR:HD1	2.00	0.44
2:A:1292:LEU:HD12	2:A:1292:LEU:HA	1.78	0.44
3:B:119:TYR:N	3:B:142:ILE:O	2.46	0.44
1:C:41:LEU:HD21	1:C:147:LEU:HD22	2.00	0.44

*Continued on next page...*



*Continued from previous page...*

Atom-1	Atom-2	Interatomic distance (Å)	Clash overlap (Å)
2:A:234:ILE:HG13	2:A:868:ASN:HB3	2.00	0.44
2:A:971:PHE:HD1	2:A:972:SER:HB2	1.83	0.44
1:C:61:LYS:HG3	1:C:85:MET:SD	2.58	0.44
2:A:867:GLY:HA2	2:A:870:THR:HG22	2.00	0.44
2:A:896:VAL:HG12	2:A:905:LEU:HD13	2.00	0.44
2:A:1287:LYS:C	2:A:1287:LYS:CD	2.85	0.44
2:A:1495:LYS:HE3	2:A:1495:LYS:N	2.33	0.44
3:B:88:GLY:O	3:B:89:ARG:CB	2.65	0.44
2:A:823:LEU:C	2:A:823:LEU:CD2	2.85	0.44
2:A:1670:LYS:HB3	2:A:1670:LYS:HE3	1.71	0.44
3:B:117:GLY:O	3:B:143:HIS:HD2	2.00	0.44
2:A:139:ASN:O	2:A:139:ASN:ND2	2.39	0.43
2:A:283:ASN:HB2	5:A:2006:NAG:H2	1.99	0.43
2:A:327:GLY:CA	3:B:134:HIS:CD2	3.01	0.43
2:A:410:GLN:HA	2:A:413:ILE:HG22	1.99	0.43
2:A:757:ASN:O	2:A:757:ASN:ND2	2.51	0.43
2:A:765:HIS:HA	2:A:1390:ASP:O	2.17	0.43
2:A:789:ALA:HA	2:A:792:VAL:HG12	2.00	0.43
2:A:1213:ASP:HB3	2:A:1663:MET:CE	2.48	0.43
2:A:1407:GLY:CA	6:A:2007:9SL:O01	2.66	0.43
2:A:144:THR:HG23	2:A:913:PHE:CB	2.48	0.43
2:A:730:TRP:O	2:A:734:LYS:N	2.43	0.43
2:A:772:PHE:CD1	2:A:772:PHE:C	2.91	0.43
1:C:55:CYS:C	1:C:56:TYR:CG	2.90	0.43
2:A:118:ILE:N	2:A:118:ILE:CD1	2.73	0.43
2:A:769:THR:HG23	2:A:772:PHE:HB2	1.99	0.43
2:A:1317:ALA:CB	2:A:1459:ASN:OD1	2.66	0.43
2:A:1506:GLY:O	2:A:1510:ASP:N	2.44	0.43
3:B:101:LEU:N	3:B:101:LEU:HD13	2.33	0.43
1:C:56:TYR:HD1	2:A:898:LYS:HD2	1.83	0.43
2:A:291:ASN:HD22	2:A:291:ASN:C	2.21	0.43
2:A:782:VAL:O	2:A:786:ILE:HG12	2.17	0.43
2:A:899:ILE:HG23	2:A:938:VAL:HG13	1.99	0.43
2:A:1437:PHE:O	2:A:1441:ILE:HG13	2.17	0.43
2:A:1677:ASP:CG	3:B:46:ARG:NH1	2.72	0.43
3:B:51:ALA:HB3	3:B:127:LEU:CD1	2.41	0.43
3:B:57:TRP:HH2	3:B:142:ILE:HD13	1.78	0.43
2:A:882:VAL:O	2:A:886:GLN:HG2	2.18	0.43
1:C:61:LYS:HG3	1:C:85:MET:HE1	1.99	0.43
2:A:196:ILE:HD12	2:A:197:VAL:CA	2.48	0.43
2:A:923:VAL:HG13	2:A:928:TRP:HB3	1.99	0.43

*Continued on next page...*

*Continued from previous page...*

Atom-1	Atom-2	Interatomic distance (Å)	Clash overlap (Å)
2:A:1675:ILE:HD12	2:A:1706:PRO:HG3	2.01	0.43
1:C:135:ARG:NH2	1:C:135:ARG:CG	2.73	0.43
2:A:140:CYS:HA	2:A:143:MET:HG3	2.00	0.43
2:A:737:ILE:O	2:A:740:ILE:HB	2.19	0.43
2:A:1189:VAL:HG11	2:A:1244:LYS:HD3	2.00	0.43
2:A:1321:ILE:CD1	2:A:1456:ILE:CG1	2.97	0.43
2:A:1760:LEU:C	2:A:1760:LEU:CD2	2.86	0.43
2:A:136:ILE:CD1	2:A:136:ILE:C	2.85	0.43
2:A:967:LEU:CD2	2:A:967:LEU:C	2.85	0.43
2:A:1232:ILE:HD11	3:B:166:LEU:HB3	2.01	0.43
2:A:1457:ILE:HD12	2:A:1458:ASP:CA	2.48	0.43
2:A:1764:SER:HA	2:A:1767:THR:HG22	2.01	0.43
1:C:108:TYR:N	1:C:108:TYR:CD1	2.86	0.43
2:A:168:LEU:HD23	2:A:169:VAL:CA	2.49	0.43
2:A:1218:ARG:NH2	2:A:1218:ARG:CB	2.82	0.43
2:A:1430:SER:HB3	2:A:1433:MET:CG	2.46	0.43
2:A:1467:LEU:HD21	2:A:1472:ILE:HG22	2.00	0.43
2:A:1650:LEU:C	2:A:1650:LEU:CD1	2.86	0.43
1:C:40:VAL:HG22	1:C:44:SER:OG	2.19	0.43
1:C:58:VAL:CG1	1:C:63:PHE:HB2	2.46	0.43
2:A:151:TRP:CE3	2:A:152:THR:N	2.87	0.43
2:A:262:ILE:HG13	2:A:1617:ILE:HD13	2.00	0.43
2:A:338:ASP:OD2	2:A:342:THR:OG1	2.29	0.43
2:A:346:THR:HG22	2:A:347:PHE:N	2.34	0.43
2:A:401:VAL:HG11	2:A:960:LEU:HD22	2.00	0.43
2:A:1675:ILE:HD12	2:A:1706:PRO:CG	2.49	0.43
2:A:1763:PHE:O	2:A:1767:THR:HB	2.18	0.43
1:C:101:PHE:CZ	1:C:105:PRO:HD3	2.54	0.42
2:A:207:LEU:HD12	2:A:213:LEU:HG	2.00	0.42
2:A:764:GLU:C	2:A:765:HIS:ND1	2.73	0.42
2:A:795:LEU:HD13	2:A:803:TYR:CZ	2.54	0.42
2:A:1408:TRP:HZ3	2:A:1441:ILE:CD1	2.32	0.42
2:A:1412:MET:CE	2:A:1434:TYR:HD1	2.29	0.42
2:A:1487:LYS:HA	2:A:1487:LYS:HD3	1.58	0.42
3:B:101:LEU:O	3:B:102:GLN:CB	2.65	0.42
3:B:178:MET:HG2	3:B:178:MET:H	1.63	0.42
1:C:34:VAL:HG23	1:C:35:PRO:O	2.18	0.42
2:A:1467:LEU:CD1	2:A:1472:ILE:CG2	2.90	0.42
3:B:67:PHE:N	3:B:67:PHE:HD1	2.17	0.42
1:C:30:MET:CG	1:C:138:GLY:HA2	2.37	0.42
1:C:59:ASN:HB3	1:C:62:GLN:CG	2.49	0.42

*Continued on next page...*

*Continued from previous page...*

Atom-1	Atom-2	Interatomic distance (Å)	Clash overlap (Å)
2:A:1286:ILE:HD12	2:A:1287:LYS:N	2.34	0.42
2:A:1420:ASN:CB	2:A:1423:LYS:HG3	2.50	0.42
2:A:1460:PHE:CD2	2:A:1756:ILE:HG13	2.53	0.42
2:A:1532:MET:HE2	2:A:1616:ARG:NH1	2.35	0.42
2:A:415:GLU:CD	2:A:416:ALA:N	2.73	0.42
2:A:845:LEU:HG	2:A:845:LEU:H	1.58	0.42
2:A:333:ILE:CG2	2:A:334:GLY:N	2.83	0.42
2:A:911:ASN:O	2:A:911:ASN:ND2	2.40	0.42
2:A:1369:GLU:HG2	4:E:1:NAG:H62	2.00	0.42
3:B:67:PHE:CE2	3:B:120:GLU:CG	2.94	0.42
2:A:1459:ASN:ND2	2:A:1459:ASN:C	2.73	0.42
2:A:1764:SER:HA	2:A:1767:THR:CG2	2.49	0.42
2:A:370:THR:O	2:A:374:ALA:HB3	2.19	0.42
2:A:406:LYS:HB2	2:A:406:LYS:HE2	1.78	0.42
2:A:738:TYR:CD1	2:A:738:TYR:C	2.93	0.42
2:A:1317:ALA:HA	2:A:1459:ASN:OD1	2.19	0.42
2:A:1373:LEU:O	2:A:1377:SER:N	2.52	0.42
3:B:71:LEU:HD22	3:B:106:ILE:HD11	2.00	0.42
2:A:380:ILE:O	2:A:384:VAL:HG12	2.19	0.42
2:A:1509:PHE:CA	2:A:1568:SER:OG	2.68	0.42
3:B:112:THR:CG2	3:B:113:TYR:H	2.33	0.42
2:A:128:PHE:HZ	2:A:166:GLU:HA	1.85	0.42
2:A:1325:LEU:HD13	2:A:1325:LEU:O	2.20	0.42
2:A:254:PHE:O	2:A:258:VAL:HG23	2.20	0.42
2:A:1340:VAL:O	2:A:1344:ALA:CB	2.68	0.42
2:A:1496:PRO:O	2:A:1497:ILE:CB	2.67	0.42
2:A:1613:ARG:C	2:A:1615:ALA:N	2.74	0.42
1:C:52:PHE:CB	1:C:129:ILE:CD1	2.82	0.41
2:A:202:THR:HG1	2:A:214:ARG:NH1	2.17	0.41
2:A:842:VAL:O	2:A:845:LEU:CD1	2.67	0.41
2:A:1358:ARG:CZ	2:A:1417:ASP:OD2	2.68	0.41
2:A:1539:GLN:O	2:A:1540:SER:CB	2.68	0.41
3:B:26:SER:OG	3:B:142:ILE:CG2	2.68	0.41
2:A:198:PHE:CE2	2:A:216:PHE:CD2	3.08	0.41
2:A:396:LEU:HD23	2:A:396:LEU:HA	1.76	0.41
2:A:739:PHE:O	2:A:742:MET:SD	2.78	0.41
2:A:803:TYR:HD2	2:A:804:PHE:CE1	2.39	0.41
2:A:960:LEU:HD23	2:A:960:LEU:C	2.41	0.41
2:A:1722:PRO:CB	3:B:103:ASP:HB2	2.51	0.41
2:A:1295:LEU:HD13	2:A:1295:LEU:HA	1.89	0.41
2:A:1500:PRO:HG2	2:A:1505:GLN:HB3	2.01	0.41

*Continued on next page...*

*Continued from previous page...*

Atom-1	Atom-2	Interatomic distance (Å)	Clash overlap (Å)
2:A:1614:LEU:HD12	2:A:1614:LEU:HA	1.87	0.41
3:B:32:TYR:CE2	3:B:113:TYR:HE1	2.18	0.41
3:B:59:PHE:CZ	3:B:61:GLN:HA	2.56	0.41
2:A:301:LYS:NZ	3:B:131:ASN:OD1	2.39	0.41
2:A:801:TYR:HD1	2:A:801:TYR:HA	1.76	0.41
2:A:1408:TRP:CZ3	2:A:1441:ILE:HD11	2.55	0.41
2:A:1566:LEU:HA	2:A:1566:LEU:HD12	1.75	0.41
2:A:1600:GLU:O	2:A:1603:PHE:CD1	2.74	0.41
2:A:1668:TYR:O	2:A:1729:ASP:HB2	2.19	0.41
2:A:1673:ASP:O	2:A:1702:GLY:O	2.39	0.41
3:B:50:ASN:ND2	3:B:50:ASN:C	2.73	0.41
3:B:162:MET:O	3:B:162:MET:SD	2.79	0.41
2:A:757:ASN:ND2	2:A:757:ASN:C	2.73	0.41
2:A:1450:ASN:C	2:A:1450:ASN:ND2	2.73	0.41
2:A:1547:LEU:HD23	2:A:1547:LEU:HA	1.85	0.41
2:A:1668:TYR:CE2	2:A:1726:VAL:HG21	2.56	0.41
3:B:59:PHE:CD2	3:B:119:TYR:CE1	3.08	0.41
1:C:52:PHE:HB3	1:C:129:ILE:HD13	1.98	0.41
2:A:147:ASN:ND2	2:A:147:ASN:O	2.53	0.41
2:A:219:LEU:HA	2:A:222:LEU:HD12	2.02	0.41
2:A:291:ASN:ND2	2:A:291:ASN:C	2.74	0.41
2:A:1594:PHE:HD1	2:A:1594:PHE:HA	1.77	0.41
2:A:1707:ILE:CG2	2:A:1736:GLY:HA3	2.51	0.41
3:B:32:TYR:CD1	3:B:33:GLY:N	2.88	0.41
2:A:175:GLY:CA	2:A:180:GLU:HA	2.50	0.41
2:A:191:LEU:HD23	2:A:191:LEU:C	2.39	0.41
2:A:1218:ARG:HD2	3:B:22:VAL:HG13	2.03	0.41
2:A:1543:MET:O	2:A:1543:MET:SD	2.79	0.41
2:A:1767:THR:HG23	2:A:1768:GLU:N	2.35	0.41
3:B:23:GLU:OE1	3:B:140:LYS:NZ	2.33	0.41
3:B:46:ARG:NH2	3:B:48:GLU:CD	2.73	0.41
3:B:179:ILE:HD13	3:B:179:ILE:HA	1.86	0.41
1:C:32:VAL:HG12	1:C:50:CYS:SG	2.61	0.41
2:A:210:VAL:HG22	2:A:214:ARG:HG2	2.03	0.41
2:A:1456:ILE:HG21	2:A:1752:VAL:HG11	2.02	0.41
2:A:1508:ILE:CG2	2:A:1564:LEU:HD11	2.50	0.41
3:B:121:CYS:O	3:B:121:CYS:SG	2.79	0.41
1:C:103:GLY:C	1:C:105:PRO:HD3	2.40	0.41
2:A:174:ARG:CD	2:A:182:THR:HG21	2.16	0.41
2:A:180:GLU:HB2	2:A:183:PHE:HB3	2.02	0.41
2:A:365:ASN:HD22	2:A:365:ASN:HA	1.67	0.41

*Continued on next page...*

*Continued from previous page...*

Atom-1	Atom-2	Interatomic distance (Å)	Clash overlap (Å)
2:A:379:MET:HE2	2:A:379:MET:HB3	1.88	0.41
2:A:395:ASN:OD1	2:A:1755:TYR:HA	2.20	0.41
2:A:792:VAL:CG1	2:A:793:LEU:N	2.83	0.41
2:A:1194:PHE:CD1	2:A:1194:PHE:C	2.94	0.41
2:A:1306:GLY:HA2	2:A:1475:THR:CG2	2.50	0.41
2:A:1460:PHE:HD1	2:A:1460:PHE:HA	1.78	0.41
2:A:1548:TYR:CD1	2:A:1548:TYR:C	2.94	0.41
2:A:1553:VAL:HG12	2:A:1557:LEU:HD22	2.02	0.41
2:A:1596:ALA:CB	2:A:1609:PHE:CE2	2.85	0.41
2:A:1677:ASP:OD1	2:A:1677:ASP:N	2.53	0.41
3:B:44:LYS:NZ	3:B:100:ASP:OD2	2.54	0.41
3:B:50:ASN:C	3:B:50:ASN:HD22	2.24	0.41
2:A:403:MET:O	2:A:403:MET:SD	2.79	0.41
2:A:758:THR:CG2	2:A:759:LEU:N	2.84	0.41
2:A:772:PHE:HD1	2:A:772:PHE:C	2.24	0.41
2:A:1634:LEU:HD12	2:A:1634:LEU:HA	1.86	0.41
3:B:46:ARG:NH2	3:B:48:GLU:OE1	2.53	0.41
1:C:59:ASN:CB	1:C:62:GLN:CB	2.86	0.40
2:A:196:ILE:C	2:A:196:ILE:CD1	2.85	0.40
2:A:272:LYS:O	2:A:274:LYS:HG3	2.21	0.40
2:A:851:THR:O	2:A:854:MET:HB3	2.21	0.40
2:A:1326:LEU:HD22	2:A:1326:LEU:HA	1.81	0.40
2:A:1647:ILE:HG23	2:A:1750:VAL:HG13	2.02	0.40
3:B:75:ASN:CG	3:B:76:GLU:N	2.74	0.40
2:A:146:ASN:O	2:A:147:ASN:CB	2.69	0.40
2:A:176:PHE:CD2	2:A:178:VAL:CG2	3.05	0.40
2:A:798:MET:O	2:A:799:ASP:CB	2.70	0.40
2:A:798:MET:HE3	2:A:803:TYR:HA	1.92	0.40
2:A:952:MET:O	2:A:956:ASN:HB2	2.21	0.40
2:A:1268:VAL:HG13	2:A:1289:LEU:HD13	2.02	0.40
3:B:32:TYR:HE2	3:B:113:TYR:CD1	2.30	0.40
2:A:114:PRO:CG	2:A:115:LEU:N	2.85	0.40
2:A:164:THR:O	2:A:168:LEU:HB3	2.22	0.40
2:A:1238:ILE:CD1	2:A:1270:LEU:HD21	2.40	0.40
2:A:1580:ILE:O	2:A:1584:VAL:HG23	2.21	0.40
3:B:79:GLN:HE21	3:B:79:GLN:HB2	1.55	0.40
2:A:274:LYS:NZ	2:A:333:ILE:O	2.52	0.40
2:A:971:PHE:CD1	2:A:972:SER:HB2	2.56	0.40
2:A:1241:MET:O	2:A:1244:LYS:HB2	2.22	0.40
2:A:1408:TRP:HZ3	2:A:1441:ILE:HD11	1.87	0.40
2:A:1412:MET:O	2:A:1416:VAL:HG13	2.22	0.40

*Continued on next page...*

*Continued from previous page...*

Atom-1	Atom-2	Interatomic distance (Å)	Clash overlap (Å)
2:A:1511:LEU:HD21	2:A:1517:PHE:CD2	2.57	0.40
2:A:1545:GLU:OE1	2:A:1545:GLU:CA	2.70	0.40
2:A:1666:PHE:O	2:A:1669:VAL:HG22	2.21	0.40
2:A:1737:ILE:O	2:A:1741:VAL:HG23	2.21	0.40
2:A:251:LEU:HD13	2:A:1630:ILE:CG2	2.46	0.40
2:A:338:ASP:O	2:A:339:TYR:CB	2.70	0.40
2:A:742:MET:HB2	2:A:746:VAL:CG2	2.51	0.40
2:A:1360:PRO:O	2:A:1361:ALA:CB	2.69	0.40
2:A:1457:ILE:CD1	2:A:1458:ASP:N	2.73	0.40
3:B:37:LYS:HB2	3:B:107:PHE:CD1	2.53	0.40

There are no symmetry-related clashes.

## 5.3 Torsion angles ⓘ

### 5.3.1 Protein backbone ⓘ

In the following table, the Percentiles column shows the percent Ramachandran outliers of the chain as a percentile score with respect to all PDB entries followed by that with respect to all EM entries.

The Analysed column shows the number of residues for which the backbone conformation was analysed, and the total number of residues.

Mol	Chain	Analysed	Favoured	Allowed	Outliers	Percentiles	
1	C	118/215 (55%)	110 (93%)	5 (4%)	3 (2%)	4	28
2	A	1132/2031 (56%)	1096 (97%)	20 (2%)	16 (1%)	9	40
3	B	171/218 (78%)	167 (98%)	4 (2%)	0	100	100
All	All	1421/2464 (58%)	1373 (97%)	29 (2%)	19 (1%)	13	41

All (19) Ramachandran outliers are listed below:

Mol	Chain	Res	Type
2	A	147	ASN
2	A	896	VAL
2	A	1431	LEU
2	A	841	ARG
2	A	844	LYS
2	A	1213	ASP
2	A	1294	ALA

*Continued on next page...*

*Continued from previous page...*

Mol	Chain	Res	Type
2	A	1540	SER
1	C	56	TYR
1	C	76	SER
2	A	305	TYR
2	A	903	CYS
2	A	1386	LYS
2	A	1497	ILE
2	A	1605	SER
1	C	147	LEU
2	A	1498	PRO
2	A	1604	VAL
2	A	767	PRO

### 5.3.2 Protein sidechains ⓘ

In the following table, the Percentiles column shows the percent sidechain outliers of the chain as a percentile score with respect to all PDB entries followed by that with respect to all EM entries.

The Analysed column shows the number of residues for which the sidechain conformation was analysed, and the total number of residues.

Mol	Chain	Analysed	Rotameric	Outliers	Percentiles	
1	C	113/193 (58%)	100 (88%)	13 (12%)	4	21
2	A	1018/1809 (56%)	752 (74%)	266 (26%)	0	1
3	B	157/190 (83%)	109 (69%)	48 (31%)	0	1
All	All	1288/2192 (59%)	961 (75%)	327 (25%)	2	2

All (327) residues with a non-rotameric sidechain are listed below:

Mol	Chain	Res	Type
1	C	30	MET
1	C	51	THR
1	C	52	PHE
1	C	55	CYS
1	C	59	ASN
1	C	61	LYS
1	C	74	ASN
1	C	107	LYS
1	C	129	ILE
1	C	134	ASP

*Continued on next page...*

*Continued from previous page...*

Mol	Chain	Res	Type
1	C	135	ARG
1	C	147	LEU
1	C	148	MET
2	A	115	LEU
2	A	117	ARG
2	A	118	ILE
2	A	121	LYS
2	A	122	ILE
2	A	124	VAL
2	A	126	SER
2	A	127	LEU
2	A	130	MET
2	A	131	LEU
2	A	134	CYS
2	A	136	ILE
2	A	137	LEU
2	A	138	THR
2	A	139	ASN
2	A	143	MET
2	A	145	MET
2	A	146	ASN
2	A	147	ASN
2	A	153	LYS
2	A	166	GLU
2	A	167	SER
2	A	168	LEU
2	A	171	ILE
2	A	181	PHE
2	A	184	LEU
2	A	191	LEU
2	A	192	ASP
2	A	204	PHE
2	A	206	ASN
2	A	207	LEU
2	A	209	ASN
2	A	214	ARG
2	A	217	ARG
2	A	220	ARG
2	A	227	VAL
2	A	235	VAL
2	A	238	LEU
2	A	243	LYS

*Continued on next page...*



*Continued from previous page...*

Mol	Chain	Res	Type
2	A	247	ASP
2	A	249	MET
2	A	255	CYS
2	A	268	MET
2	A	271	LEU
2	A	280	LEU
2	A	282	ASN
2	A	285	THR
2	A	286	LEU
2	A	291	ASN
2	A	293	LEU
2	A	298	ASP
2	A	299	PHE
2	A	300	ARG
2	A	310	LYS
2	A	311	ASP
2	A	313	LEU
2	A	314	LEU
2	A	318	SER
2	A	329	THR
2	A	348	SER
2	A	349	TRP
2	A	354	LEU
2	A	356	ARG
2	A	358	MET
2	A	362	TYR
2	A	364	GLU
2	A	365	ASN
2	A	366	LEU
2	A	370	THR
2	A	379	MET
2	A	387	PHE
2	A	395	ASN
2	A	403	MET
2	A	408	GLN
2	A	410	GLN
2	A	412	ASN
2	A	414	GLU
2	A	415	GLU
2	A	726	CYS
2	A	727	SER
2	A	729	TYR

*Continued on next page...*

*Continued from previous page...*

Mol	Chain	Res	Type
2	A	732	LYS
2	A	733	PHE
2	A	736	CYS
2	A	748	LEU
2	A	750	ILE
2	A	751	THR
2	A	755	VAL
2	A	759	LEU
2	A	763	MET
2	A	764	GLU
2	A	765	HIS
2	A	768	MET
2	A	769	THR
2	A	771	GLU
2	A	772	PHE
2	A	773	LYS
2	A	774	ASN
2	A	776	LEU
2	A	780	ASN
2	A	781	LEU
2	A	790	GLU
2	A	791	MET
2	A	794	LYS
2	A	795	LEU
2	A	796	ILE
2	A	801	TYR
2	A	808	TRP
2	A	818	LEU
2	A	820	LEU
2	A	825	LEU
2	A	831	LEU
2	A	834	LEU
2	A	835	ARG
2	A	837	PHE
2	A	838	ARG
2	A	839	LEU
2	A	840	LEU
2	A	841	ARG
2	A	845	LEU
2	A	848	SER
2	A	854	MET
2	A	869	LEU

*Continued on next page...*

*Continued from previous page...*

Mol	Chain	Res	Type
2	A	870	THR
2	A	871	LEU
2	A	873	LEU
2	A	887	LEU
2	A	890	LYS
2	A	896	VAL
2	A	898	LYS
2	A	901	ASP
2	A	905	LEU
2	A	910	MET
2	A	911	ASN
2	A	916	SER
2	A	918	LEU
2	A	929	ILE
2	A	941	GLN
2	A	943	MET
2	A	944	CYS
2	A	945	LEU
2	A	952	MET
2	A	956	ASN
2	A	962	LEU
2	A	964	LEU
2	A	966	LEU
2	A	967	LEU
2	A	968	LEU
2	A	1176	LYS
2	A	1187	LYS
2	A	1189	VAL
2	A	1191	HIS
2	A	1204	LEU
2	A	1206	SER
2	A	1209	LEU
2	A	1218	ARG
2	A	1219	LYS
2	A	1223	LYS
2	A	1226	LEU
2	A	1246	ILE
2	A	1251	LYS
2	A	1264	LEU
2	A	1270	LEU
2	A	1274	VAL
2	A	1277	THR

*Continued on next page...*

*Continued from previous page...*

Mol	Chain	Res	Type
2	A	1278	LEU
2	A	1283	LEU
2	A	1286	ILE
2	A	1287	LYS
2	A	1289	LEU
2	A	1290	ARG
2	A	1293	ARG
2	A	1295	LEU
2	A	1299	ARG
2	A	1305	GLU
2	A	1307	MET
2	A	1309	VAL
2	A	1323	ASN
2	A	1325	LEU
2	A	1326	LEU
2	A	1331	PHE
2	A	1342	LEU
2	A	1350	CYS
2	A	1353	THR
2	A	1354	THR
2	A	1358	ARG
2	A	1385	LEU
2	A	1396	TYR
2	A	1399	LEU
2	A	1408	TRP
2	A	1409	THR
2	A	1419	VAL
2	A	1422	ASP
2	A	1424	GLN
2	A	1426	LYS
2	A	1449	LEU
2	A	1450	ASN
2	A	1452	PHE
2	A	1459	ASN
2	A	1461	ASN
2	A	1462	GLN
2	A	1464	LYS
2	A	1465	LYS
2	A	1467	LEU
2	A	1472	ILE
2	A	1474	MET
2	A	1478	GLN

*Continued on next page...*

*Continued from previous page...*

Mol	Chain	Res	Type
2	A	1479	LYS
2	A	1486	LYS
2	A	1488	LEU
2	A	1491	LYS
2	A	1495	LYS
2	A	1499	ARG
2	A	1503	LYS
2	A	1504	ILE
2	A	1511	LEU
2	A	1515	GLN
2	A	1517	PHE
2	A	1519	ILE
2	A	1520	SER
2	A	1527	LEU
2	A	1528	ASN
2	A	1533	MET
2	A	1534	VAL
2	A	1537	GLU
2	A	1543	MET
2	A	1551	ASN
2	A	1557	LEU
2	A	1561	GLU
2	A	1562	CYS
2	A	1565	LYS
2	A	1571	HIS
2	A	1573	TYR
2	A	1593	MET
2	A	1594	PHE
2	A	1598	LEU
2	A	1601	THR
2	A	1602	TYR
2	A	1605	SER
2	A	1608	LEU
2	A	1614	LEU
2	A	1616	ARG
2	A	1619	ARG
2	A	1621	LEU
2	A	1628	LYS
2	A	1634	LEU
2	A	1637	LEU
2	A	1644	LEU
2	A	1649	LEU

*Continued on next page...*

*Continued from previous page...*

Mol	Chain	Res	Type
2	A	1653	LEU
2	A	1661	PHE
2	A	1670	LYS
2	A	1671	LYS
2	A	1673	ASP
2	A	1683	THR
2	A	1687	SER
2	A	1691	LEU
2	A	1701	ASP
2	A	1704	LEU
2	A	1711	LYS
2	A	1718	LYS
2	A	1719	LYS
2	A	1725	SER
2	A	1749	LEU
2	A	1753	ASN
2	A	1754	MET
3	B	27	GLU
3	B	28	THR
3	B	29	GLU
3	B	34	MET
3	B	39	LEU
3	B	46	ARG
3	B	47	SER
3	B	48	GLU
3	B	50	ASN
3	B	60	ARG
3	B	65	GLU
3	B	66	GLU
3	B	67	PHE
3	B	76	GLU
3	B	78	LEU
3	B	79	GLN
3	B	80	LEU
3	B	82	GLU
3	B	84	GLU
3	B	85	ARG
3	B	90	VAL
3	B	93	ASN
3	B	95	SER
3	B	99	LYS
3	B	101	LEU

*Continued on next page...*

*Continued from previous page...*

Mol	Chain	Res	Type
3	B	102	GLN
3	B	104	LEU
3	B	109	THR
3	B	121	CYS
3	B	125	ARG
3	B	126	LEU
3	B	127	LEU
3	B	130	GLU
3	B	131	ASN
3	B	136	THR
3	B	138	VAL
3	B	141	LYS
3	B	149	LYS
3	B	159	SER
3	B	162	MET
3	B	166	LEU
3	B	174	LEU
3	B	178	MET
3	B	180	TYR
3	B	181	CYS
3	B	183	LYS
3	B	190	GLU
3	B	191	THR

Sometimes sidechains can be flipped to improve hydrogen bonding and reduce clashes. All (31) such sidechains are listed below:

Mol	Chain	Res	Type
1	C	118	GLN
1	C	136	HIS
2	A	147	ASN
2	A	154	ASN
2	A	278	ASN
2	A	291	ASN
2	A	360	GLN
2	A	365	ASN
2	A	410	GLN
2	A	412	ASN
2	A	766	HIS
2	A	774	ASN
2	A	909	HIS
2	A	941	GLN
2	A	956	ASN

*Continued on next page...*

*Continued from previous page...*

Mol	Chain	Res	Type
2	A	1276	ASN
2	A	1378	GLN
2	A	1424	GLN
2	A	1450	ASN
2	A	1514	ASN
2	A	1528	ASN
2	A	1551	ASN
2	A	1571	HIS
2	A	1753	ASN
2	A	1762	ASN
3	B	50	ASN
3	B	79	GLN
3	B	102	GLN
3	B	115	HIS
3	B	134	HIS
3	B	143	HIS

### 5.3.3 RNA [i](#)

There are no RNA molecules in this entry.

## 5.4 Non-standard residues in protein, DNA, RNA chains [i](#)

There are no non-standard protein/DNA/RNA residues in this entry.

## 5.5 Carbohydrates [i](#)

4 monosaccharides are modelled in this entry.

In the following table, the Counts columns list the number of bonds (or angles) for which Mogul statistics could be retrieved, the number of bonds (or angles) that are observed in the model and the number of bonds (or angles) that are defined in the Chemical Component Dictionary. The Link column lists molecule types, if any, to which the group is linked. The Z score for a bond length (or angle) is the number of standard deviations the observed value is removed from the expected value. A bond length (or angle) with  $|Z| > 2$  is considered an outlier worth inspection. RMSZ is the root-mean-square of all Z scores of the bond lengths (or angles).

Mol	Type	Chain	Res	Link	Bond lengths			Bond angles		
					Counts	RMSZ	$\# Z  > 2$	Counts	RMSZ	$\# Z  > 2$
4	NAG	D	1	2,4	14,14,15	0.44	0	17,19,21	0.98	1 (5%)
4	NAG	D	2	4	14,14,15	0.40	0	17,19,21	1.30	2 (11%)



Mol	Type	Chain	Res	Link	Bond lengths			Bond angles		
					Counts	RMSZ	# Z  > 2	Counts	RMSZ	# Z  > 2
4	NAG	E	1	2,4	14,14,15	0.38	0	17,19,21	1.08	2 (11%)
4	NAG	E	2	4	14,14,15	0.41	0	17,19,21	1.18	2 (11%)

In the following table, the Chirals column lists the number of chiral outliers, the number of chiral centers analysed, the number of these observed in the model and the number defined in the Chemical Component Dictionary. Similar counts are reported in the Torsion and Rings columns. '-' means no outliers of that kind were identified.

Mol	Type	Chain	Res	Link	Chirals	Torsions	Rings
4	NAG	D	1	2,4	-	1/6/23/26	0/1/1/1
4	NAG	D	2	4	-	4/6/23/26	0/1/1/1
4	NAG	E	1	2,4	-	6/6/23/26	0/1/1/1
4	NAG	E	2	4	-	4/6/23/26	0/1/1/1

There are no bond length outliers.

All (7) bond angle outliers are listed below:

Mol	Chain	Res	Type	Atoms	Z	Observed(°)	Ideal(°)
4	E	1	NAG	O5-C1-C2	-3.09	106.40	111.29
4	E	2	NAG	C1-O5-C5	-3.04	108.07	112.19
4	D	2	NAG	C1-O5-C5	2.69	115.83	112.19
4	E	2	NAG	O5-C5-C6	2.64	111.34	107.20
4	D	2	NAG	C2-N2-C7	-2.61	119.19	122.90
4	E	1	NAG	O4-C4-C3	-2.18	105.31	110.35
4	D	1	NAG	O5-C5-C6	2.13	110.55	107.20

There are no chirality outliers.

All (15) torsion outliers are listed below:

Mol	Chain	Res	Type	Atoms
4	E	1	NAG	C8-C7-N2-C2
4	E	1	NAG	O7-C7-N2-C2
4	D	2	NAG	O5-C5-C6-O6
4	E	2	NAG	C4-C5-C6-O6
4	D	2	NAG	C4-C5-C6-O6
4	D	2	NAG	C8-C7-N2-C2
4	D	2	NAG	O7-C7-N2-C2
4	E	2	NAG	O5-C5-C6-O6
4	E	2	NAG	C1-C2-N2-C7
4	E	2	NAG	C3-C2-N2-C7

*Continued on next page...*

*Continued from previous page...*

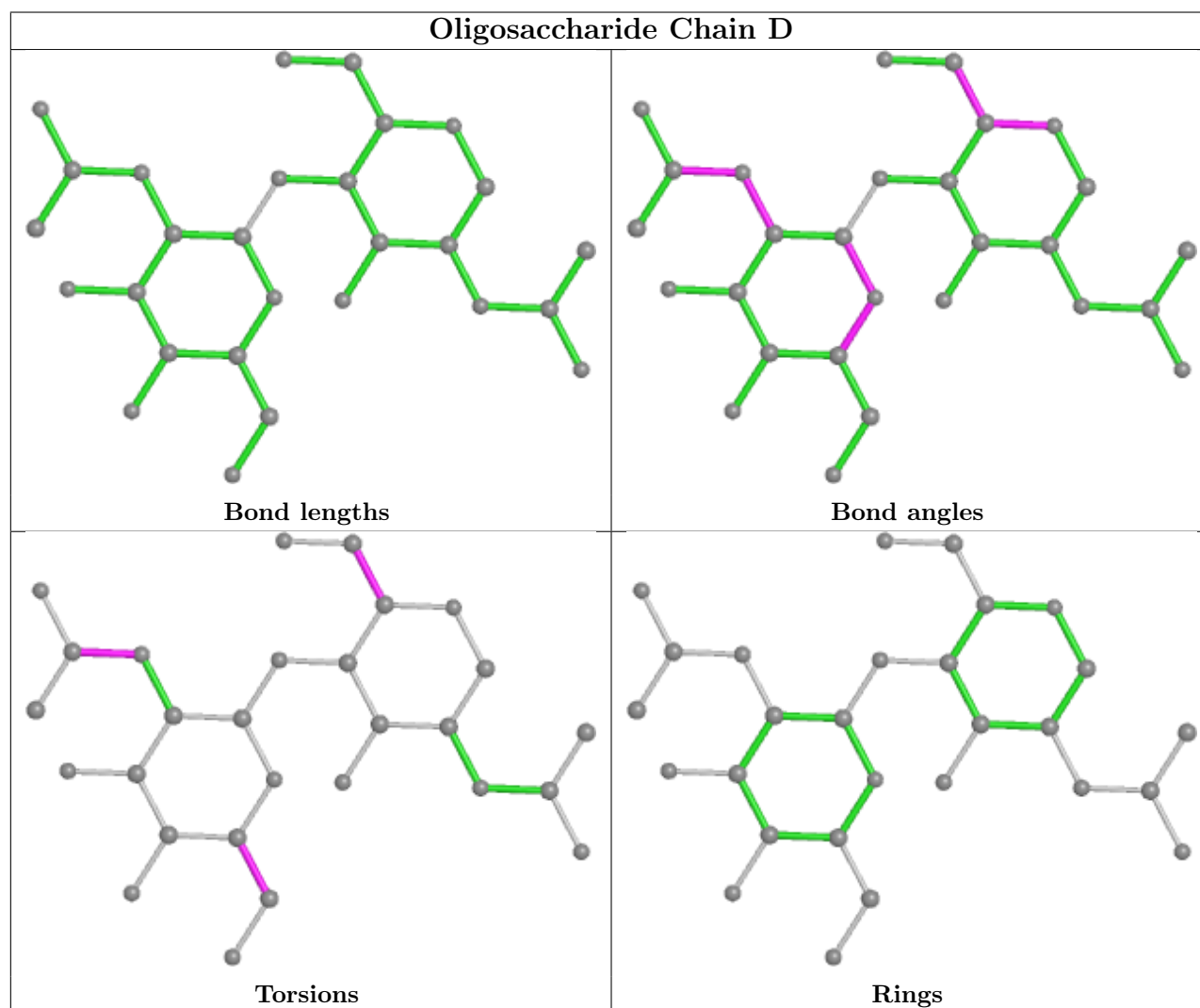
Mol	Chain	Res	Type	Atoms
4	E	1	NAG	O5-C5-C6-O6
4	E	1	NAG	C4-C5-C6-O6
4	E	1	NAG	C1-C2-N2-C7
4	D	1	NAG	C4-C5-C6-O6
4	E	1	NAG	C3-C2-N2-C7

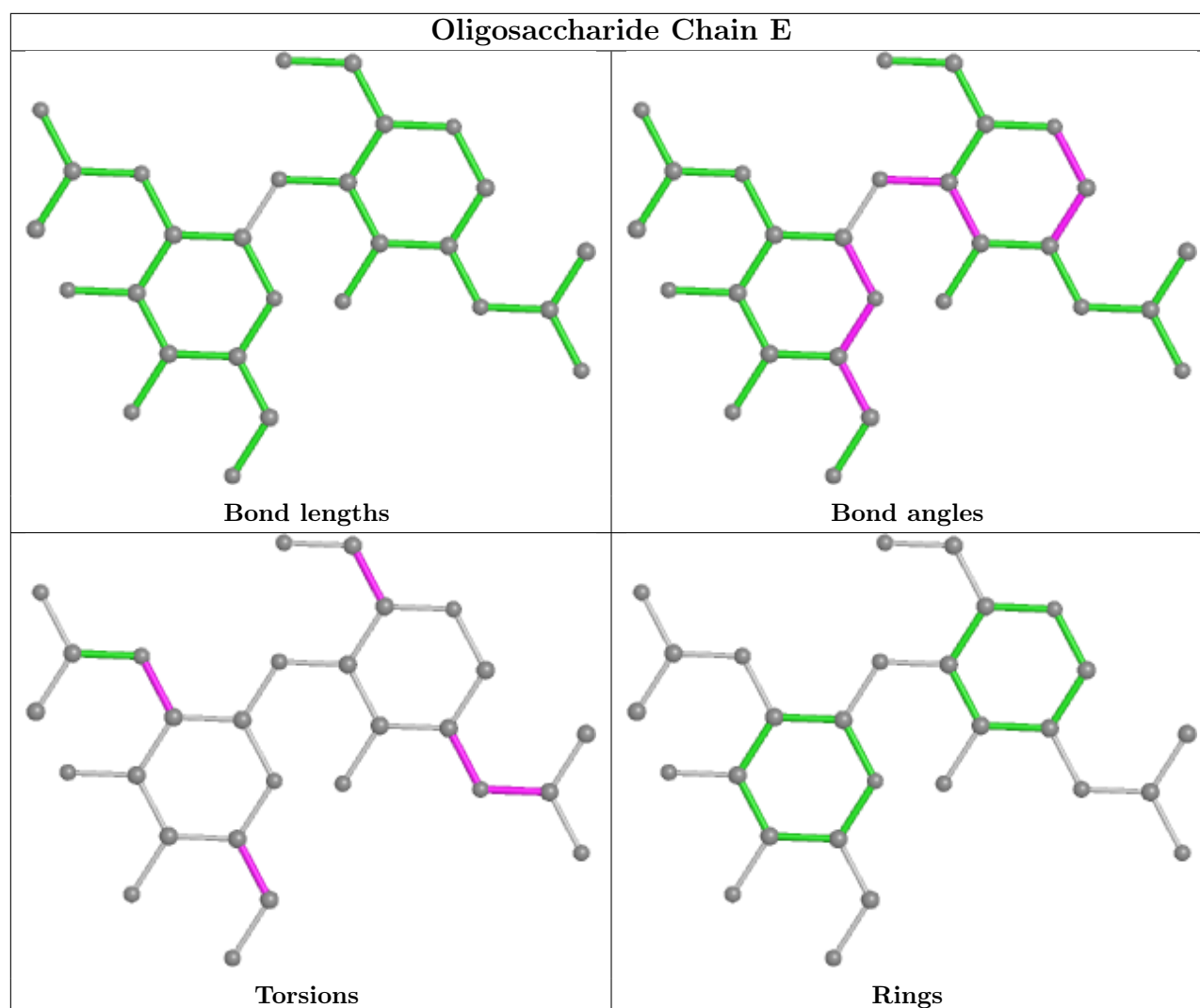
There are no ring outliers.

2 monomers are involved in 6 short contacts:

Mol	Chain	Res	Type	Clashes	Symm-Clashes
4	E	1	NAG	4	0
4	E	2	NAG	2	0

The following is a two-dimensional graphical depiction of Mogul quality analysis of bond lengths, bond angles, torsion angles, and ring geometry for oligosaccharide.





## 5.6 Ligand geometry [i](#)

8 ligands are modelled in this entry.

In the following table, the Counts columns list the number of bonds (or angles) for which Mogul statistics could be retrieved, the number of bonds (or angles) that are observed in the model and the number of bonds (or angles) that are defined in the Chemical Component Dictionary. The Link column lists molecule types, if any, to which the group is linked. The Z score for a bond length (or angle) is the number of standard deviations the observed value is removed from the expected value. A bond length (or angle) with  $|Z| > 2$  is considered an outlier worth inspection. RMSZ is the root-mean-square of all Z scores of the bond lengths (or angles).

Mol	Type	Chain	Res	Link	Bond lengths			Bond angles		
					Counts	RMSZ	$\# Z  > 2$	Counts	RMSZ	$\# Z  > 2$
5	NAG	B	302	3	14,14,15	0.35	0	17,19,21	0.46	0
6	9SL	A	2007	-	17,23,23	3.58	8 (47%)	13,37,37	3.03	6 (46%)
5	NAG	A	2005	2	14,14,15	2.61	1 (7%)	17,19,21	2.30	2 (11%)

Mol	Type	Chain	Res	Link	Bond lengths			Bond angles		
					Counts	RMSZ	# Z  > 2	Counts	RMSZ	# Z  > 2
5	NAG	B	301	3	14,14,15	0.44	0	17,19,21	1.10	0
5	NAG	C	301	1	14,14,15	0.34	0	17,19,21	0.37	0
5	NAG	B	304	3	14,14,15	0.37	0	17,19,21	0.37	0
5	NAG	B	303	3	14,14,15	0.34	0	17,19,21	0.49	0
5	NAG	A	2006	2	14,14,15	0.35	0	17,19,21	0.36	0

In the following table, the Chirals column lists the number of chiral outliers, the number of chiral centers analysed, the number of these observed in the model and the number defined in the Chemical Component Dictionary. Similar counts are reported in the Torsion and Rings columns. '-' means no outliers of that kind were identified.

Mol	Type	Chain	Res	Link	Chirals	Torsions	Rings
5	NAG	B	302	3	-	2/6/23/26	0/1/1/1
6	9SL	A	2007	-	-	4/5/53/53	0/3/3/3
5	NAG	A	2005	2	-	2/6/23/26	0/1/1/1
5	NAG	B	301	3	-	6/6/23/26	0/1/1/1
5	NAG	C	301	1	-	2/6/23/26	0/1/1/1
5	NAG	B	304	3	-	2/6/23/26	0/1/1/1
5	NAG	B	303	3	-	2/6/23/26	0/1/1/1
5	NAG	A	2006	2	-	2/6/23/26	0/1/1/1

All (9) bond length outliers are listed below:

Mol	Chain	Res	Type	Atoms	Z	Observed(Å)	Ideal(Å)
5	A	2005	NAG	C1-C2	9.63	1.66	1.52
6	A	2007	9SL	C12-N13	8.73	1.49	1.35
6	A	2007	9SL	C07-N08	6.03	1.45	1.34
6	A	2007	9SL	C02-N21	5.89	1.44	1.33
6	A	2007	9SL	C12-N15	4.53	1.45	1.34
6	A	2007	9SL	C05-C14	3.63	1.60	1.52
6	A	2007	9SL	O01-C02	-3.45	1.17	1.21
6	A	2007	9SL	O03-C02	3.01	1.39	1.35
6	A	2007	9SL	C05-N06	-2.52	1.43	1.47

All (8) bond angle outliers are listed below:

Mol	Chain	Res	Type	Atoms	Z	Observed(°)	Ideal(°)
5	A	2005	NAG	C1-O5-C5	-8.24	101.03	112.19
6	A	2007	9SL	O03-C02-N21	7.83	120.80	111.08
5	A	2005	NAG	O5-C1-C2	-4.59	104.05	111.29

*Continued on next page...*

*Continued from previous page...*

Mol	Chain	Res	Type	Atoms	Z	Observed(°)	Ideal(°)
6	A	2007	9SL	O01-C02-N21	-4.22	118.55	125.51
6	A	2007	9SL	N09-C07-N06	-3.32	120.80	125.42
6	A	2007	9SL	N13-C12-N11	-3.08	107.65	115.45
6	A	2007	9SL	O03-C02-O01	-2.56	120.64	123.07
6	A	2007	9SL	O03-C04-C05	2.31	112.96	108.40

There are no chirality outliers.

All (22) torsion outliers are listed below:

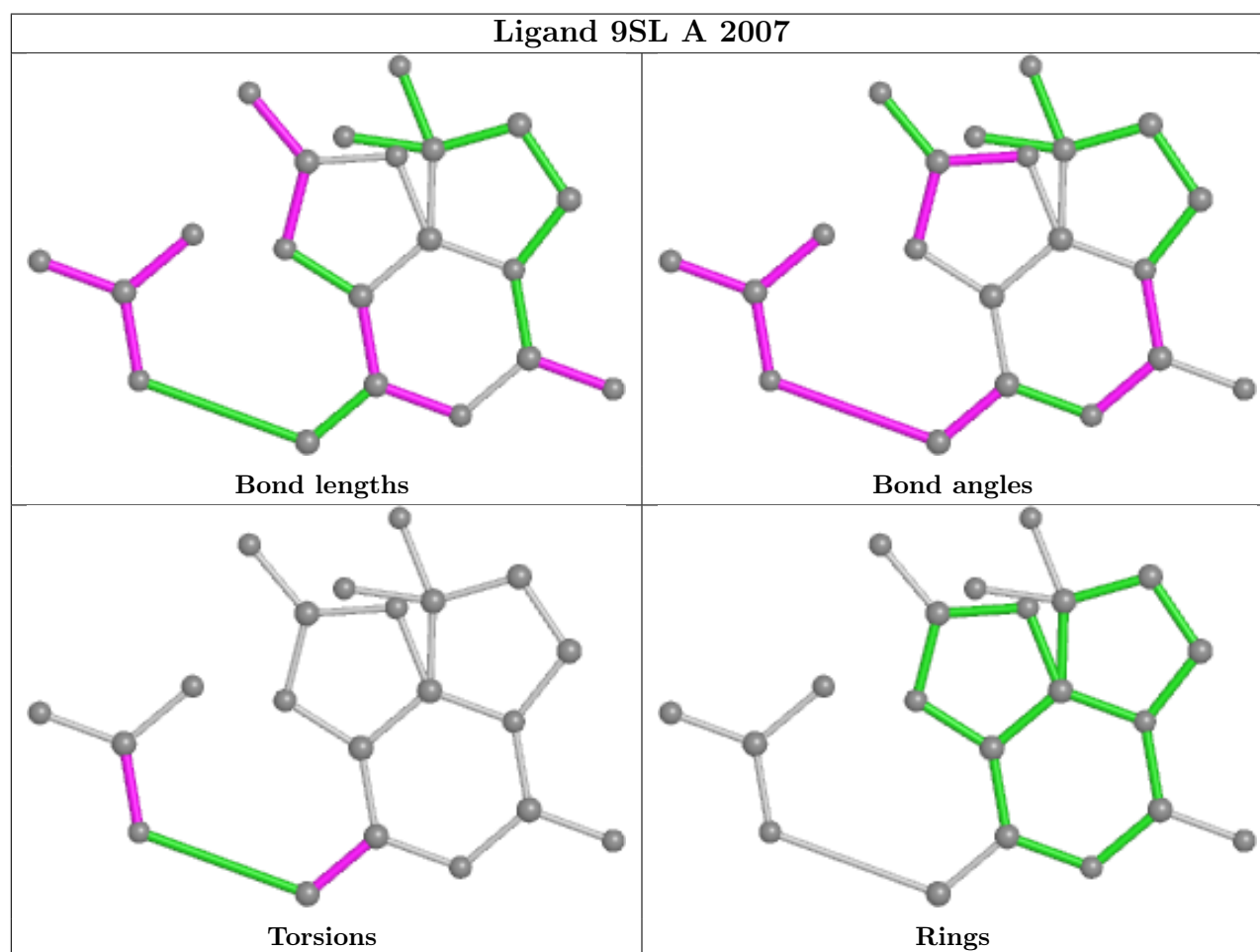
Mol	Chain	Res	Type	Atoms
5	B	301	NAG	C8-C7-N2-C2
5	B	301	NAG	O7-C7-N2-C2
6	A	2007	9SL	O01-C02-O03-C04
6	A	2007	9SL	N21-C02-O03-C04
6	A	2007	9SL	O03-C04-C05-N06
6	A	2007	9SL	O03-C04-C05-C14
5	C	301	NAG	O5-C5-C6-O6
5	A	2005	NAG	O5-C5-C6-O6
5	A	2006	NAG	O5-C5-C6-O6
5	B	303	NAG	O5-C5-C6-O6
5	B	304	NAG	O5-C5-C6-O6
5	B	301	NAG	O5-C5-C6-O6
5	C	301	NAG	C4-C5-C6-O6
5	A	2005	NAG	C4-C5-C6-O6
5	A	2006	NAG	C4-C5-C6-O6
5	B	304	NAG	C4-C5-C6-O6
5	B	301	NAG	C1-C2-N2-C7
5	B	303	NAG	C4-C5-C6-O6
5	B	301	NAG	C4-C5-C6-O6
5	B	302	NAG	C4-C5-C6-O6
5	B	302	NAG	O5-C5-C6-O6
5	B	301	NAG	C3-C2-N2-C7

There are no ring outliers.

4 monomers are involved in 8 short contacts:

Mol	Chain	Res	Type	Clashes	Symm-Clashes
6	A	2007	9SL	2	0
5	A	2005	NAG	1	0
5	C	301	NAG	4	0
5	A	2006	NAG	1	0

The following is a two-dimensional graphical depiction of Mogul quality analysis of bond lengths, bond angles, torsion angles, and ring geometry for all instances of the Ligand of Interest. In addition, ligands with molecular weight > 250 and outliers as shown on the validation Tables will also be included. For torsion angles, if less than 5% of the Mogul distribution of torsion angles is within 10 degrees of the torsion angle in question, then that torsion angle is considered an outlier. Any bond that is central to one or more torsion angles identified as an outlier by Mogul will be highlighted in the graph. For rings, the root-mean-square deviation (RMSD) between the ring in question and similar rings identified by Mogul is calculated over all ring torsion angles. If the average RMSD is greater than 60 degrees and the minimal RMSD between the ring in question and any Mogul-identified rings is also greater than 60 degrees, then that ring is considered an outlier. The outliers are highlighted in purple. The color gray indicates Mogul did not find sufficient equivalents in the CSD to analyse the geometry.



## 5.7 Other polymers ⓘ

There are no such residues in this entry.

## 5.8 Polymer linkage issues ⓘ

There are no chain breaks in this entry.

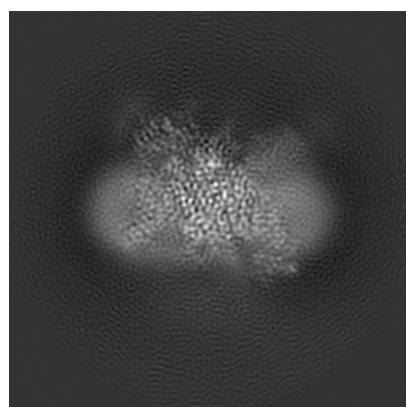
## 6 Map visualisation [i](#)

This section contains visualisations of the EMDB entry EMD-9781. These allow visual inspection of the internal detail of the map and identification of artifacts.

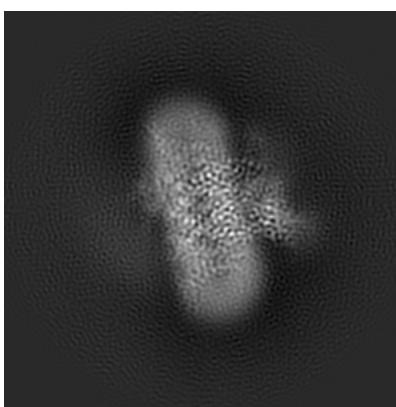
No raw map or half-maps were deposited for this entry and therefore no images, graphs, etc. pertaining to the raw map can be shown.

### 6.1 Orthogonal projections [i](#)

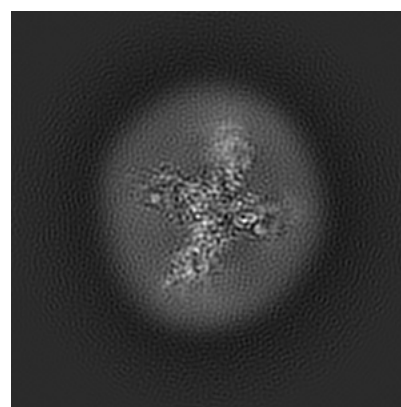
#### 6.1.1 Primary map



X



Y

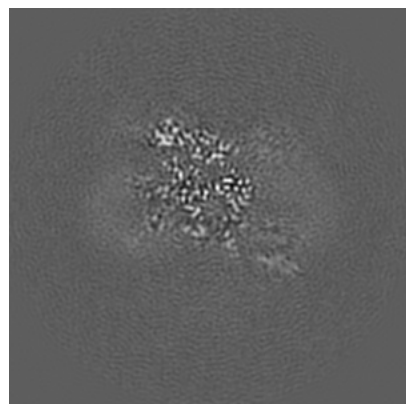


Z

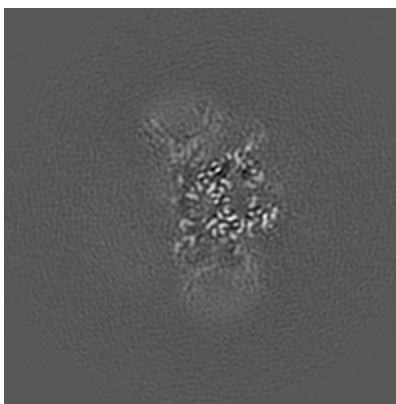
The images above show the map projected in three orthogonal directions.

### 6.2 Central slices [i](#)

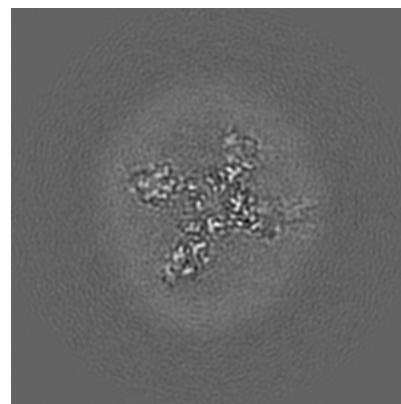
#### 6.2.1 Primary map



X Index: 120



Y Index: 120



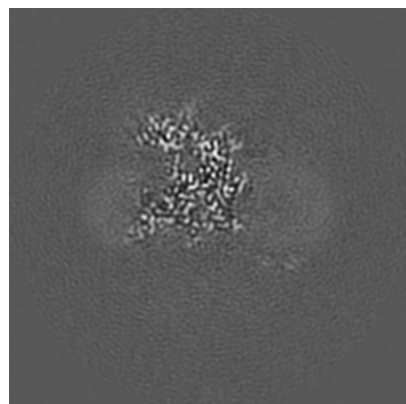
Z Index: 120



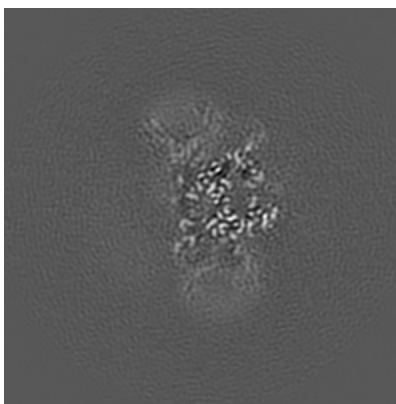
The images above show central slices of the map in three orthogonal directions.

## 6.3 Largest variance slices [i](#)

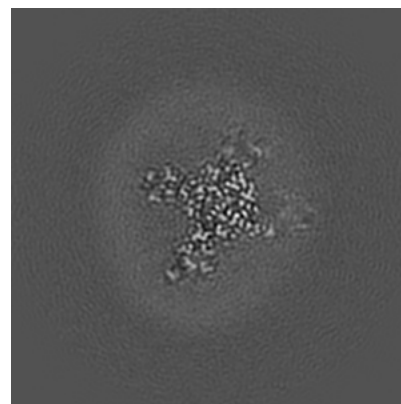
### 6.3.1 Primary map



X Index: 112



Y Index: 120

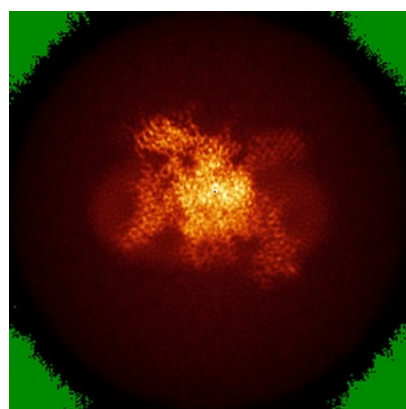


Z Index: 127

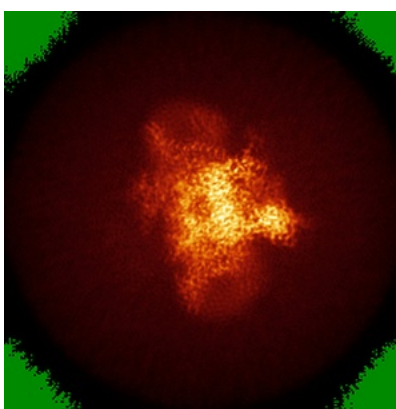
The images above show the largest variance slices of the map in three orthogonal directions.

## 6.4 Orthogonal standard-deviation projections (False-color) [i](#)

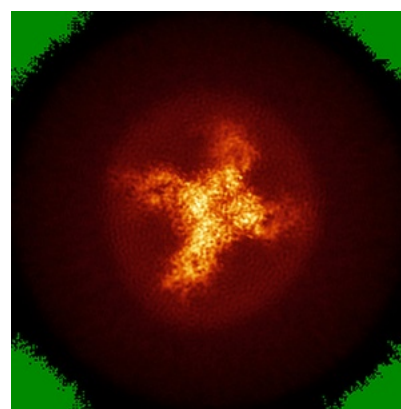
### 6.4.1 Primary map



X



Y



Z

The images above show the map standard deviation projections with false color in three orthogonal directions. Minimum values are shown in green, max in blue, and dark to light orange shades represent small to large values respectively.



## 6.5 Orthogonal surface views [i](#)

### 6.5.1 Primary map



The images above show the 3D surface view of the map at the recommended contour level 0.07. These images, in conjunction with the slice images, may facilitate assessment of whether an appropriate contour level has been provided.

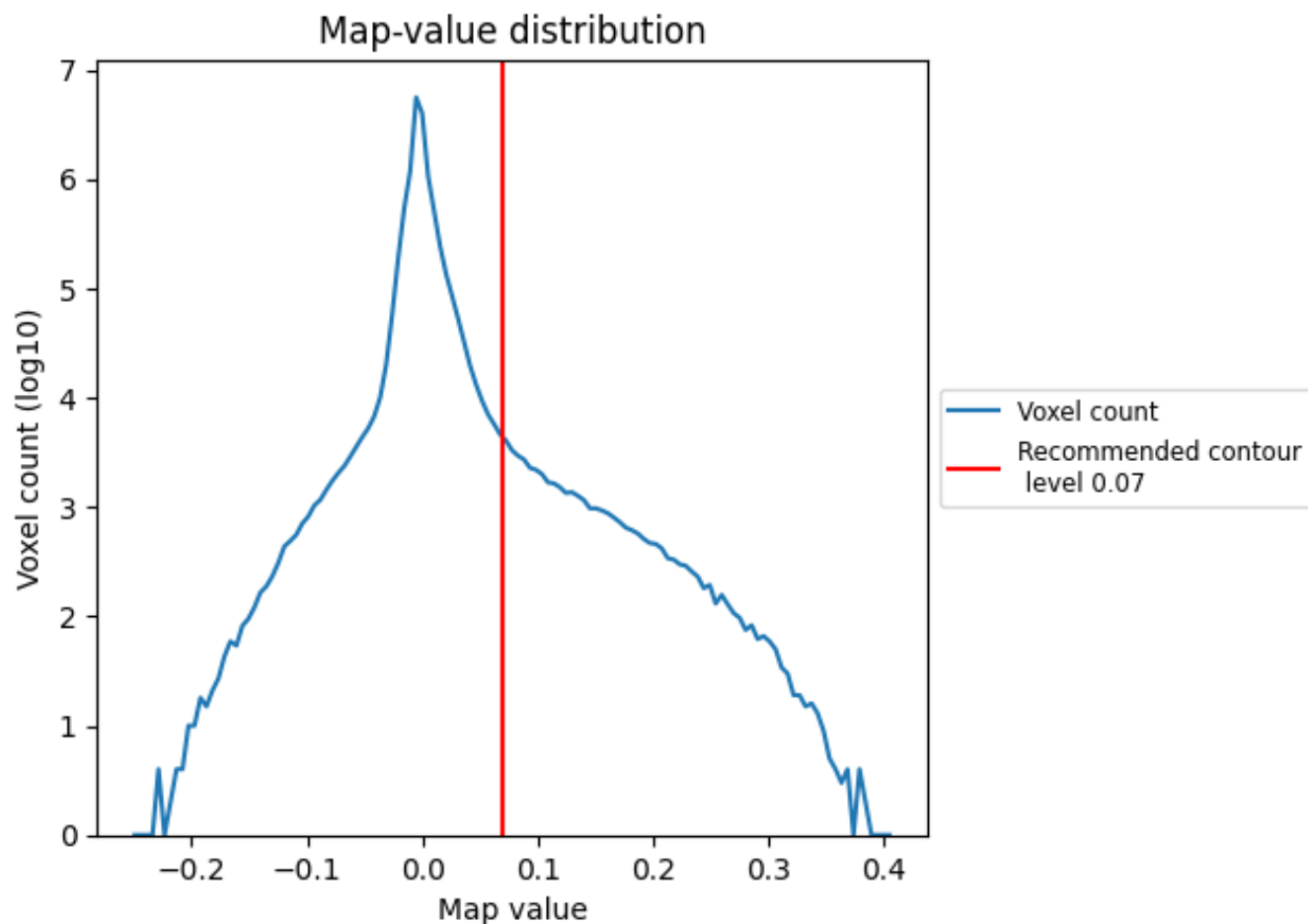
## 6.6 Mask visualisation [i](#)

This section was not generated. No masks/segmentation were deposited.

## 7 Map analysis [i](#)

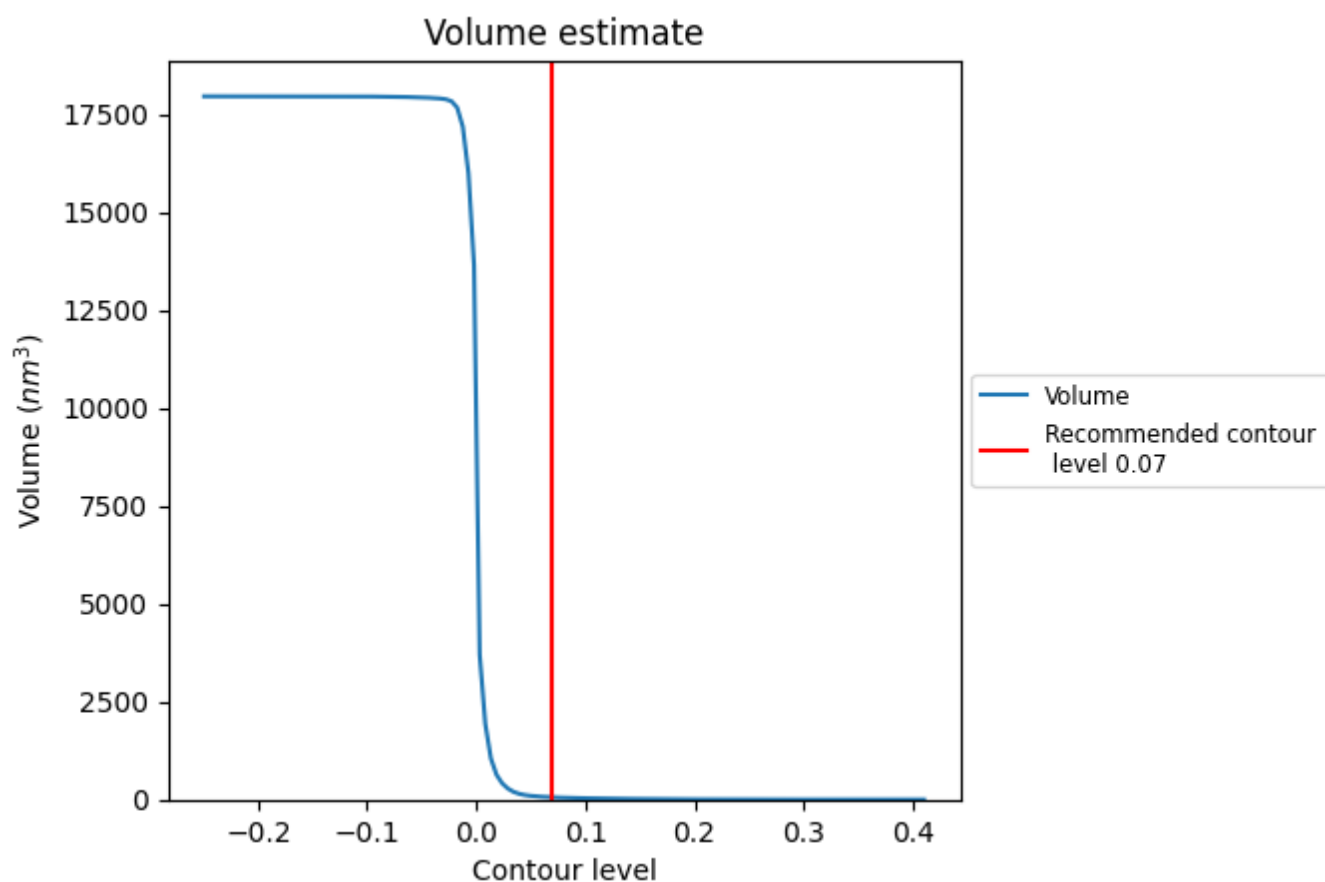
This section contains the results of statistical analysis of the map.

### 7.1 Map-value distribution [i](#)



The map-value distribution is plotted in 128 intervals along the x-axis. The y-axis is logarithmic. A spike in this graph at zero usually indicates that the volume has been masked.

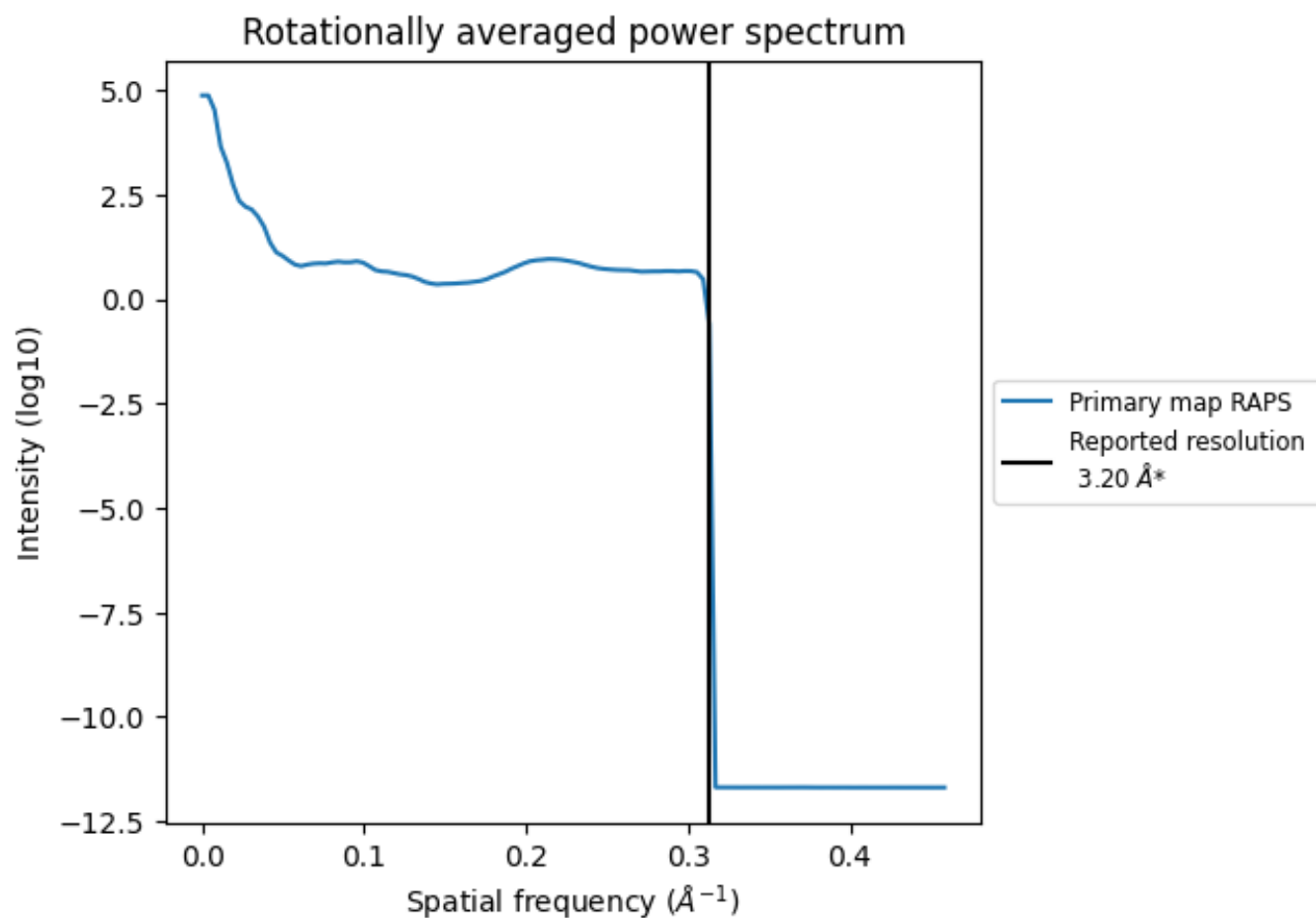
## 7.2 Volume estimate [i](#)



The volume at the recommended contour level is 57 nm<sup>3</sup>; this corresponds to an approximate mass of 52 kDa.

The volume estimate graph shows how the enclosed volume varies with the contour level. The recommended contour level is shown as a vertical line and the intersection between the line and the curve gives the volume of the enclosed surface at the given level.

### 7.3 Rotationally averaged power spectrum ⓘ



\*Reported resolution corresponds to spatial frequency of 0.312 Å<sup>-1</sup>

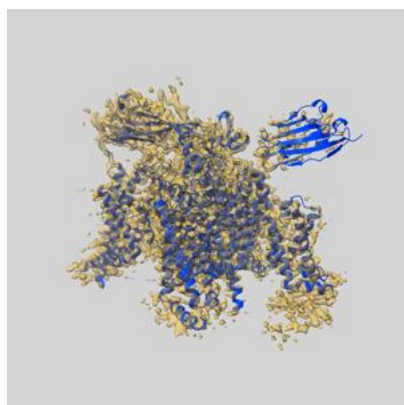
## 8 Fourier-Shell correlation ⓘ

This section was not generated. No FSC curve or half-maps provided.

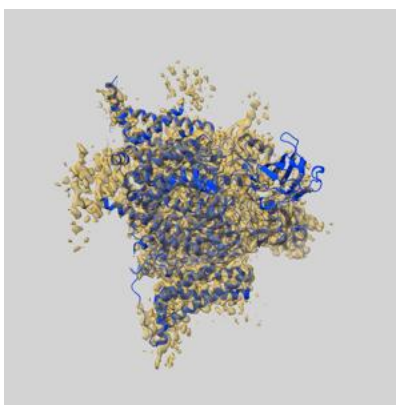
## 9 Map-model fit [i](#)

This section contains information regarding the fit between EMDB map EMD-9781 and PDB model 6J8G. Per-residue inclusion information can be found in section [3](#) on page [7](#).

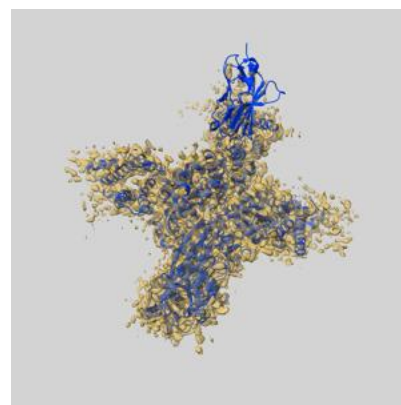
### 9.1 Map-model overlay [i](#)



X



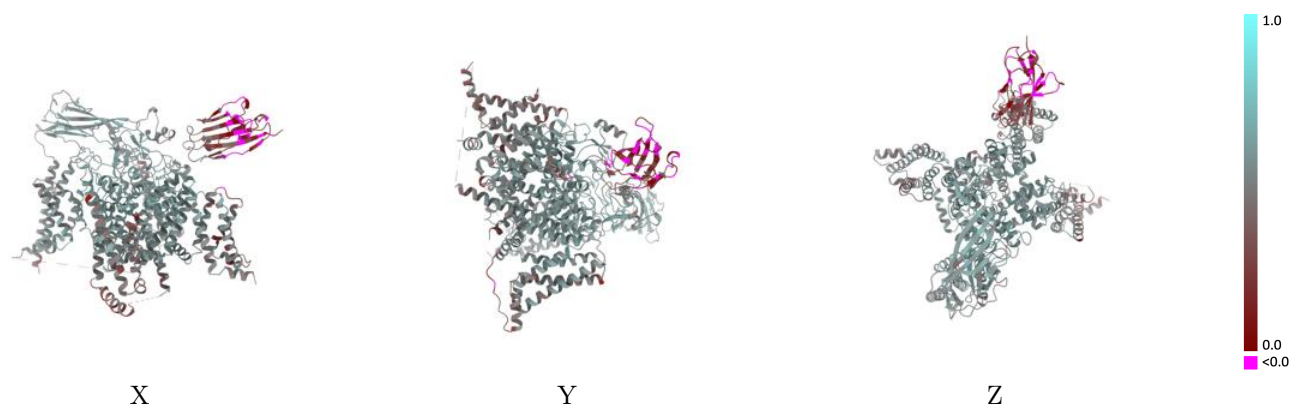
Y



Z

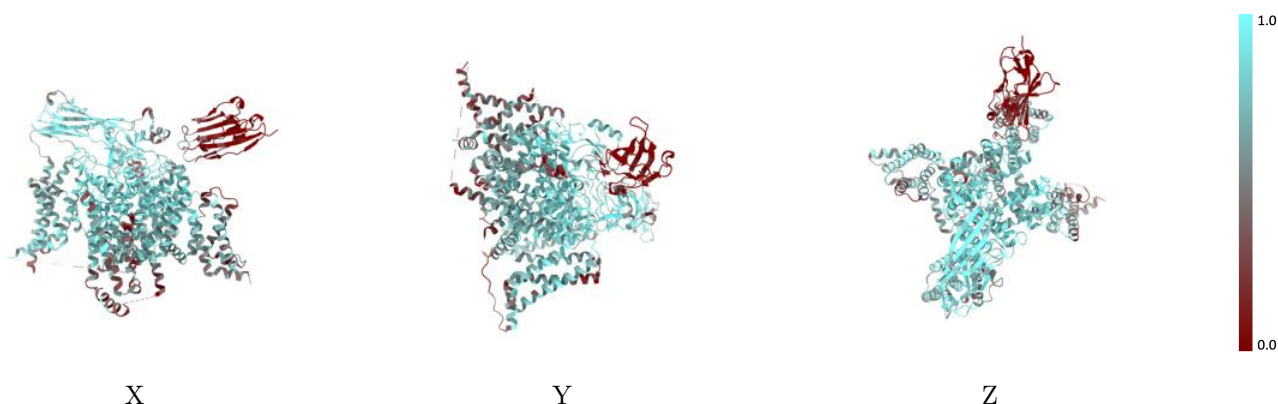
The images above show the 3D surface view of the map at the recommended contour level 0.07 at 50% transparency in yellow overlaid with a ribbon representation of the model coloured in blue. These images allow for the visual assessment of the quality of fit between the atomic model and the map.

## 9.2 Q-score mapped to coordinate model [i](#)



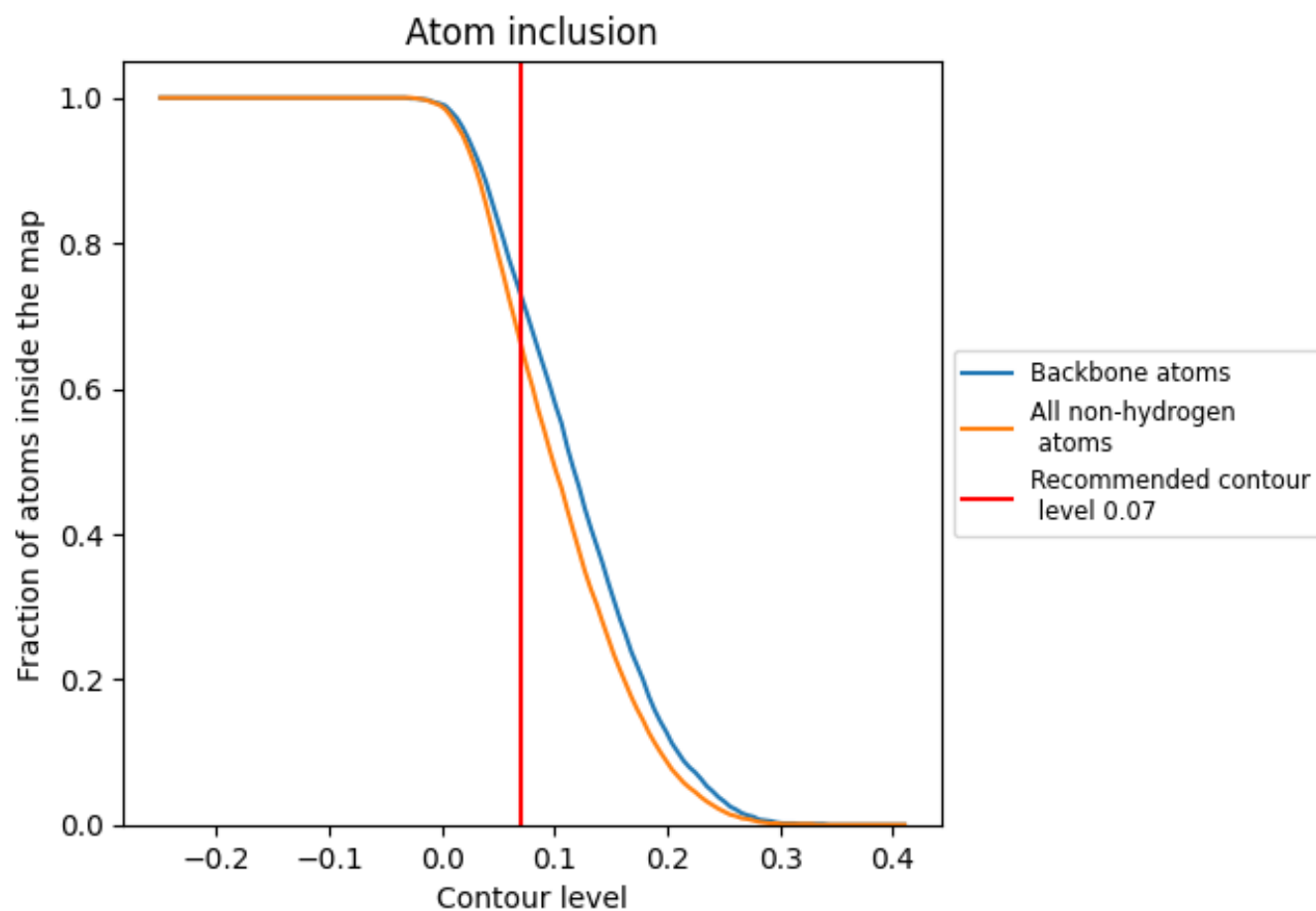
The images above show the model with each residue coloured according its Q-score. This shows their resolvability in the map with higher Q-score values reflecting better resolvability. Please note: Q-score is calculating the resolvability of atoms, and thus high values are only expected at resolutions at which atoms can be resolved. Low Q-score values may therefore be expected for many entries.

## 9.3 Atom inclusion mapped to coordinate model [i](#)



The images above show the model with each residue coloured according to its atom inclusion. This shows to what extent they are inside the map at the recommended contour level (0.07).

## 9.4 Atom inclusion [i](#)



At the recommended contour level, 73% of all backbone atoms, 66% of all non-hydrogen atoms, are inside the map.



9.5 Map-model fit summary ⓘ

The table lists the average atom inclusion at the recommended contour level (0.07) and Q-score for the entire model and for each chain.

Chain	Atom inclusion	Q-score
All	<div></div> 0.6610	<div></div> 0.4950
A	<div></div> 0.7090	<div></div> 0.5250
B	<div></div> 0.7400	<div></div> 0.5180
C	<div></div> 0.1070	<div></div> 0.1800
D	<div></div> 0.3930	<div></div> 0.3450
E	<div></div> 0.6430	<div></div> 0.4580

