



Full wwPDB EM Validation Report ⓘ

Apr 27, 2025 – 03:48 AM JST

PDB ID : 9JD6 / pdb_00009jd6
EMDB ID : EMD-61382
Title : Cryo-EM structure of human TauT in presence of Piperidine-4-sulfonate, determined in an inward-facing occluded conformation
Authors : Qu, Q.; Chao, Y.; Zhou, Z.
Deposited on : 2024-08-30
Resolution : 3.06 Å(reported)

This is a Full wwPDB EM Validation Report for a publicly released PDB entry.

We welcome your comments at validation@mail.wwpdb.org

A user guide is available at

<https://www.wwpdb.org/validation/2017/EMValidationReportHelp>
with specific help available everywhere you see the ⓘ symbol.

The types of validation reports are described at

<http://www.wwpdb.org/validation/2017/FAQs#types>.

The following versions of software and data (see [references ⓘ](#)) were used in the production of this report:

EMDB validation analysis : **FAILED**
Mogul : 1.8.5 (274361), CSD as541be (2020)
MolProbity : 4.02b-467
buster-report : 1.1.7 (2018)
Percentile statistics : 20231227.v01 (using entries in the PDB archive December 27th 2023)
MapQ : **FAILED**
Ideal geometry (proteins) : Engh & Huber (2001)
Ideal geometry (DNA, RNA) : Parkinson et al. (1996)
Validation Pipeline (wwPDB-VP) : 2.42

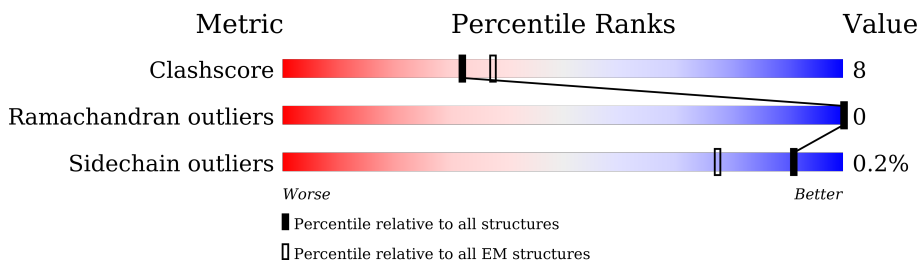
1 Overall quality at a glance

The following experimental techniques were used to determine the structure:

ELECTRON MICROSCOPY

The reported resolution of this entry is 3.06 Å.

Percentile scores (ranging between 0-100) for global validation metrics of the entry are shown in the following graphic. The table shows the number of entries on which the scores are based.



Metric	Whole archive (#Entries)	EM structures (#Entries)
Clashscore	210492	15764
Ramachandran outliers	207382	16835
Sidechain outliers	206894	16415

The table below summarises the geometric issues observed across the polymeric chains and their fit to the map. The red, orange, yellow and green segments of the bar indicate the fraction of residues that contain outliers for ≥ 3 , 2, 1 and 0 types of geometric quality criteria respectively. A grey segment represents the fraction of residues that are not modelled. The numeric value for each fraction is indicated below the corresponding segment, with a dot representing fractions $\leq 5\%$.

Mol	Chain	Length	Quality of chain
1	A	606	

The following table lists non-polymeric compounds, carbohydrate monomers and non-standard residues in protein, DNA, RNA chains that are outliers for geometric or electron-density-fit criteria:

Mol	Type	Chain	Res	Chirality	Geometry	Clashes	Electron density
3	CL	A	704	-	-	X	-

2 Entry composition

There are 6 unique types of molecules in this entry. The entry contains 4230 atoms, of which 0 are hydrogens and 0 are deuteriums.

In the tables below, the AltConf column contains the number of residues with at least one atom in alternate conformation and the Trace column contains the number of residues modelled with at most 2 atoms.

- Molecule 1 is a protein called Sodium- and chloride-dependent taurine transporter.

Mol	Chain	Residues	Atoms					AltConf	Trace
1	A	518	Total	C	N	O	S	0	0
			4106	2754	621	699	32		

There are 24 discrepancies between the modelled and reference sequences:

Chain	Residue	Modelled	Actual	Comment	Reference
A	583	SER	-	expression tag	UNP P31641
A	584	ARG	-	expression tag	UNP P31641
A	585	LEU	-	expression tag	UNP P31641
A	586	GLU	-	expression tag	UNP P31641
A	587	GLU	-	expression tag	UNP P31641
A	588	GLU	-	expression tag	UNP P31641
A	589	LEU	-	expression tag	UNP P31641
A	590	ARG	-	expression tag	UNP P31641
A	591	ARG	-	expression tag	UNP P31641
A	592	ARG	-	expression tag	UNP P31641
A	593	THR	-	expression tag	UNP P31641
A	594	GLU	-	expression tag	UNP P31641
A	595	PRO	-	expression tag	UNP P31641
A	596	GLY	-	expression tag	UNP P31641
A	597	LEU	-	expression tag	UNP P31641
A	598	ARG	-	expression tag	UNP P31641
A	599	SER	-	expression tag	UNP P31641
A	600	ARG	-	expression tag	UNP P31641
A	601	LEU	-	expression tag	UNP P31641
A	602	GLU	-	expression tag	UNP P31641
A	603	VAL	-	expression tag	UNP P31641
A	604	LEU	-	expression tag	UNP P31641
A	605	PHE	-	expression tag	UNP P31641
A	606	GLN	-	expression tag	UNP P31641

- Molecule 2 is 2-acetamido-2-deoxy-beta-D-glucopyranose (CCD ID: NAG) (formula: C₈H₁₅NO₆) (labeled as "Ligand of Interest" by depositor).



Mol	Chain	Residues	Atoms				AltConf
2	A	1	Total	C	N	O	0
			14	8	1	5	
2	A	1	Total	C	N	O	0
			14	8	1	5	
2	A	1	Total	C	N	O	0
			14	8	1	5	

- Molecule 3 is CHLORIDE ION (CCD ID: CL) (formula: Cl) (labeled as "Ligand of Interest" by depositor).

Mol	Chain	Residues	Atoms		AltConf
3	A	1	Total	Cl	0
			1	1	

- Molecule 4 is CHOLESTEROL HEMISUCCINATE (CCD ID: Y01) (formula: C₃₁H₅₀O₄) (labeled as "Ligand of Interest" by depositor).

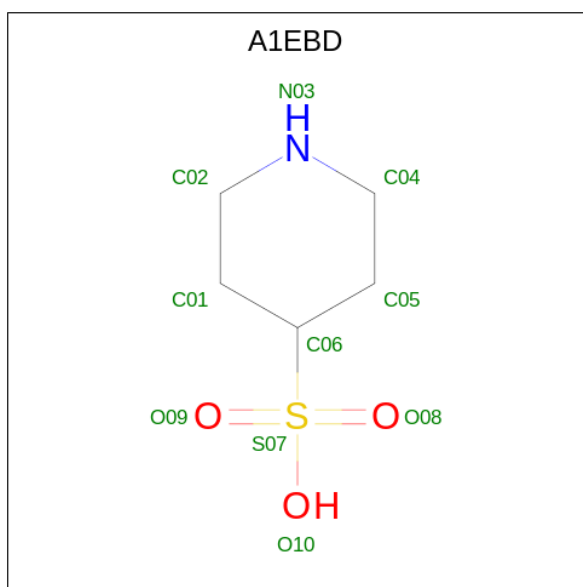


Mol	Chain	Residues	Atoms			AltConf
4	A	1	Total 35	C 31	O 4	0
4	A	1	Total 35	C 31	O 4	0

- Molecule 5 is SODIUM ION (CCD ID: NA) (formula: Na) (labeled as "Ligand of Interest" by depositor).

Mol	Chain	Residues	Atoms	AltConf
5	A	1	Total Na 1 1	0

- Molecule 6 is piperidine-4-sulfonic acid (CCD ID: A1EBD) (formula: $\text{C}_5\text{H}_{11}\text{NO}_3\text{S}$) (labeled as "Ligand of Interest" by depositor).

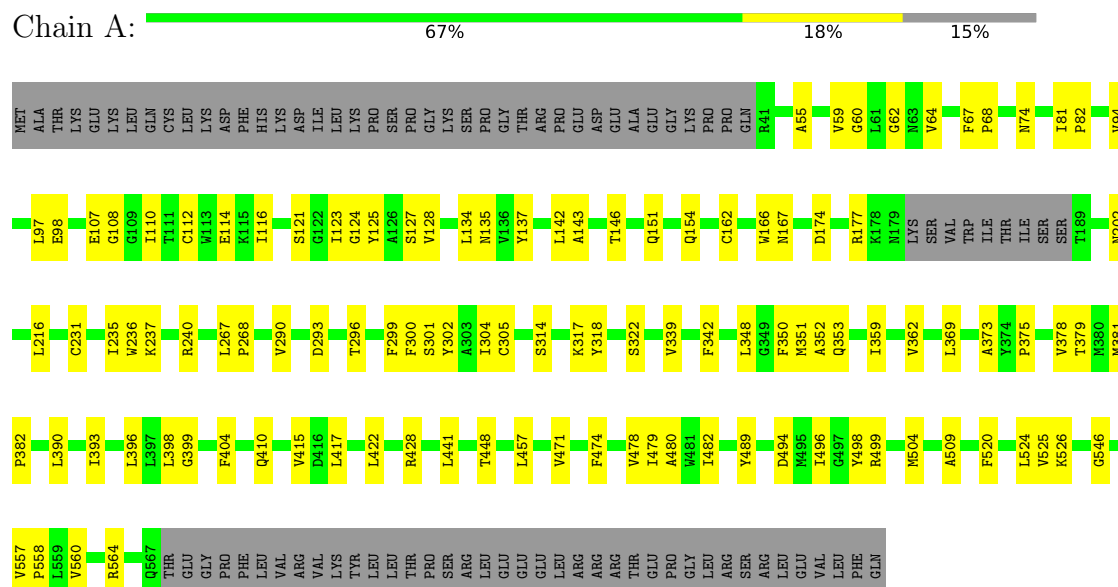


Mol	Chain	Residues	Atoms					AltConf
			Total	C	N	O	S	
6	A	1	10	5	1	3	1	0

3 Residue-property plots [i](#)

These plots are drawn for all protein, RNA, DNA and oligosaccharide chains in the entry. The first graphic for a chain summarises the proportions of the various outlier classes displayed in the second graphic. The second graphic shows the sequence view annotated by issues in geometry. Residues are color-coded according to the number of geometric quality criteria for which they contain at least one outlier: green = 0, yellow = 1, orange = 2 and red = 3 or more. Stretches of 2 or more consecutive residues without any outlier are shown as a green connector. Residues present in the sample, but not in the model, are shown in grey.

- Molecule 1: Sodium- and chloride-dependent taurine transporter



4 Experimental information

Property	Value	Source
EM reconstruction method	SINGLE PARTICLE	Depositor
Imposed symmetry	POINT, Not provided	
Number of particles used	189468	Depositor
Resolution determination method	FSC 0.143 CUT-OFF	Depositor
CTF correction method	PHASE FLIPPING AND AMPLITUDE CORRECTION	Depositor
Microscope	TFS KRIOS	Depositor
Voltage (kV)	300	Depositor
Electron dose ($e^-/\text{\AA}^2$)	50	Depositor
Minimum defocus (nm)	1500	Depositor
Maximum defocus (nm)	2000	Depositor
Magnification	Not provided	
Image detector	FEI FALCON IV (4k x 4k)	Depositor

5 Model quality [i](#)

5.1 Standard geometry [i](#)

Bond lengths and bond angles in the following residue types are not validated in this section: CL, NA, NAG, Y01, A1EBD

The Z score for a bond length (or angle) is the number of standard deviations the observed value is removed from the expected value. A bond length (or angle) with $|Z| > 5$ is considered an outlier worth inspection. RMSZ is the root-mean-square of all Z scores of the bond lengths (or angles).

Mol	Chain	Bond lengths		Bond angles	
		RMSZ	$\# Z > 5$	RMSZ	$\# Z > 5$
1	A	0.26	0/4239	0.47	0/5779

There are no bond length outliers.

There are no bond angle outliers.

There are no chirality outliers.

There are no planarity outliers.

5.2 Too-close contacts [i](#)

In the following table, the Non-H and H(model) columns list the number of non-hydrogen atoms and hydrogen atoms in the chain respectively. The H(added) column lists the number of hydrogen atoms added and optimized by MolProbity. The Clashes column lists the number of clashes within the asymmetric unit, whereas Symm-Clashes lists symmetry-related clashes.

Mol	Chain	Non-H	H(model)	H(added)	Clashes	Symm-Clashes
1	A	4106	0	4072	69	0
2	A	42	0	39	0	0
3	A	1	0	0	2	0
4	A	70	0	98	4	0
5	A	1	0	0	0	0
6	A	10	0	0	1	0
All	All	4230	0	4209	71	0

The all-atom clashscore is defined as the number of clashes found per 1000 atoms (including hydrogen atoms). The all-atom clashscore for this structure is 8.

All (71) close contacts within the same asymmetric unit are listed below, sorted by their clash magnitude.

Atom-1	Atom-2	Interatomic distance (Å)	Clash overlap (Å)
1:A:97:LEU:HD11	1:A:479:ILE:HG21	1.63	0.80
1:A:478:VAL:HG23	1:A:482:ILE:HD12	1.72	0.72
1:A:348:LEU:HD21	1:A:369:LEU:HD11	1.74	0.68
1:A:135:ASN:OD1	1:A:410:GLN:NE2	2.21	0.67
1:A:299:PHE:HA	1:A:304:ILE:HD13	1.80	0.64
1:A:526:LYS:HE3	1:A:526:LYS:HA	1.83	0.61
1:A:422:LEU:HB3	1:A:428:ARG:HH12	1.66	0.60
1:A:142:LEU:HD21	1:A:399:GLY:HA3	1.83	0.60
1:A:317:LYS:HG2	1:A:318:TYR:H	1.67	0.59
1:A:74:ASN:ND2	1:A:293:ASP:OD1	2.36	0.58
1:A:496:ILE:HG22	1:A:498:TYR:H	1.73	0.54
1:A:107:GLU:HG2	1:A:108:GLY:H	1.72	0.54
1:A:267:LEU:HD12	1:A:268:PRO:HD2	1.90	0.53
1:A:236:TRP:CH2	1:A:237:LYS:HE2	2.44	0.52
1:A:339:VAL:HA	1:A:342:PHE:HD2	1.75	0.52
1:A:162:CYS:O	1:A:167:ASN:ND2	2.44	0.51
1:A:301:SER:CB	3:A:704:CL:CL	2.95	0.51
1:A:352:ALA:HA	1:A:362:VAL:HG11	1.94	0.50
1:A:375:PRO:O	1:A:379:THR:OG1	2.25	0.50
1:A:166:TRP:CD1	1:A:202:ASN:HB2	2.47	0.50
1:A:235:ILE:HD11	1:A:404:PHE:HB2	1.94	0.49
1:A:107:GLU:N	1:A:314:SER:OG	2.46	0.49
1:A:174:ASP:HA	1:A:177:ARG:HB2	1.95	0.49
1:A:375:PRO:HA	1:A:378:VAL:HG22	1.95	0.49
1:A:415:VAL:HG12	1:A:422:LEU:HD13	1.95	0.48
1:A:350:PHE:O	1:A:353:GLN:HG3	2.14	0.47
1:A:301:SER:OG	3:A:704:CL:CL	2.67	0.47
1:A:151:GLN:HG3	1:A:154:GLN:NE2	2.30	0.47
1:A:231:CYS:O	1:A:235:ILE:HG12	2.15	0.47
1:A:60:GLY:HA2	1:A:398:LEU:HB3	1.97	0.47
1:A:123:ILE:HG23	1:A:471:VAL:HG13	1.97	0.46
1:A:142:LEU:HD22	1:A:396:LEU:HD13	1.96	0.46
1:A:296:THR:O	1:A:300:PHE:HB2	2.15	0.46
1:A:457:LEU:HD11	1:A:546:GLY:HA3	1.97	0.46
1:A:520:PHE:CE1	1:A:524:LEU:HD11	2.51	0.46
1:A:302:TYR:HB2	1:A:304:ILE:CD1	2.45	0.46
1:A:125:TYR:CE2	4:A:705:Y01:HAR2	2.51	0.45
1:A:151:GLN:O	1:A:154:GLN:NE2	2.40	0.45
1:A:489:TYR:HB3	1:A:499:ARG:NH1	2.32	0.45
1:A:557:VAL:HB	1:A:558:PRO:HD3	1.98	0.45
1:A:81:ILE:HB	1:A:82:PRO:HD3	1.98	0.44
1:A:351:MET:SD	1:A:373:ALA:HA	2.57	0.44

Continued on next page...

Continued from previous page...

Atom-1	Atom-2	Interatomic distance (Å)	Clash overlap (Å)
1:A:94:VAL:O	1:A:98:GLU:OE1	2.36	0.44
1:A:143:ALA:O	1:A:146:THR:HG22	2.18	0.43
1:A:417:LEU:HD13	4:A:706:Y01:HAT2	2.00	0.43
1:A:560:VAL:O	1:A:564:ARG:HG3	2.17	0.43
4:A:705:Y01:HAO2	4:A:705:Y01:HAP1	1.39	0.43
1:A:114:GLU:OE1	1:A:121:SER:OG	2.35	0.43
1:A:110:ILE:HD11	1:A:128:VAL:HG11	2.00	0.43
1:A:112:CYS:O	1:A:116:ILE:HG12	2.18	0.43
1:A:302:TYR:HB2	1:A:304:ILE:HD11	2.00	0.43
1:A:525:VAL:HG12	1:A:526:LYS:HD2	2.01	0.43
1:A:474:PHE:O	1:A:478:VAL:HG12	2.19	0.42
1:A:480:ALA:HB1	1:A:509:ALA:HB2	2.01	0.42
1:A:290:VAL:HA	1:A:293:ASP:OD1	2.20	0.42
1:A:390:LEU:O	1:A:393:ILE:HG22	2.20	0.42
1:A:67:PHE:HB3	1:A:68:PRO:HD3	2.01	0.42
1:A:322:SER:HA	1:A:496:ILE:HD13	2.02	0.42
1:A:359:ILE:HD12	1:A:359:ILE:H	1.84	0.41
1:A:55:ALA:O	1:A:59:VAL:HG22	2.20	0.41
1:A:489:TYR:OH	1:A:504:MET:HB2	2.21	0.41
1:A:381:MET:HA	1:A:382:PRO:HD3	1.92	0.41
1:A:441:LEU:HD23	1:A:441:LEU:HA	1.92	0.41
4:A:705:Y01:HAM2	4:A:706:Y01:HAM1	2.03	0.41
1:A:62:GLY:N	6:A:708:A1EBD:O09	2.48	0.41
1:A:134:LEU:HA	1:A:137:TYR:CE1	2.56	0.40
1:A:60:GLY:O	1:A:64:VAL:HG12	2.22	0.40
1:A:216:LEU:HA	1:A:448:THR:HG22	2.02	0.40
1:A:304:ILE:HG22	1:A:305:CYS:SG	2.62	0.40
1:A:494:ASP:OD2	1:A:494:ASP:N	2.55	0.40
1:A:124:GLY:O	1:A:127:SER:OG	2.32	0.40

There are no symmetry-related clashes.

5.3 Torsion angles

5.3.1 Protein backbone

In the following table, the Percentiles column shows the percent Ramachandran outliers of the chain as a percentile score with respect to all PDB entries followed by that with respect to all EM entries.

The Analysed column shows the number of residues for which the backbone conformation was analysed, and the total number of residues.

Mol	Chain	Analysed	Favoured	Allowed	Outliers	Percentiles	
1	A	514/606 (85%)	506 (98%)	8 (2%)	0	100	100

There are no Ramachandran outliers to report.

5.3.2 Protein sidechains [i](#)

In the following table, the Percentiles column shows the percent sidechain outliers of the chain as a percentile score with respect to all PDB entries followed by that with respect to all EM entries.

The Analysed column shows the number of residues for which the sidechain conformation was analysed, and the total number of residues.

Mol	Chain	Analysed	Rotameric	Outliers	Percentiles	
1	A	439/523 (84%)	438 (100%)	1 (0%)	92	95

All (1) residues with a non-rotameric sidechain are listed below:

Mol	Chain	Res	Type
1	A	240	ARG

Sometimes sidechains can be flipped to improve hydrogen bonding and reduce clashes. All (1) such sidechains are listed below:

Mol	Chain	Res	Type
1	A	403	GLN

5.3.3 RNA [i](#)

There are no RNA molecules in this entry.

5.4 Non-standard residues in protein, DNA, RNA chains [i](#)

There are no non-standard protein/DNA/RNA residues in this entry.

5.5 Carbohydrates [i](#)

There are no oligosaccharides in this entry.

5.6 Ligand geometry

Of 8 ligands modelled in this entry, 2 are monoatomic - leaving 6 for Mogul analysis.

In the following table, the Counts columns list the number of bonds (or angles) for which Mogul statistics could be retrieved, the number of bonds (or angles) that are observed in the model and the number of bonds (or angles) that are defined in the Chemical Component Dictionary. The Link column lists molecule types, if any, to which the group is linked. The Z score for a bond length (or angle) is the number of standard deviations the observed value is removed from the expected value. A bond length (or angle) with $|Z| > 2$ is considered an outlier worth inspection. RMSZ is the root-mean-square of all Z scores of the bond lengths (or angles).

Mol	Type	Chain	Res	Link	Bond lengths			Bond angles		
					Counts	RMSZ	$\# Z > 2$	Counts	RMSZ	$\# Z > 2$
6	A1EBD	A	708	-	10,10,10	1.34	2 (20%)	13,14,14	1.32	1 (7%)
2	NAG	A	703	1	14,14,15	0.35	0	17,19,21	0.47	0
4	Y01	A	706	-	38,38,38	0.17	0	57,57,57	0.27	0
2	NAG	A	702	1	14,14,15	0.92	1 (7%)	17,19,21	0.88	1 (5%)
2	NAG	A	701	1	14,14,15	0.26	0	17,19,21	0.55	0
4	Y01	A	705	-	38,38,38	0.65	2 (5%)	57,57,57	0.60	2 (3%)

In the following table, the Chirals column lists the number of chiral outliers, the number of chiral centers analysed, the number of these observed in the model and the number defined in the Chemical Component Dictionary. Similar counts are reported in the Torsion and Rings columns. '-' means no outliers of that kind were identified.

Mol	Type	Chain	Res	Link	Chirals	Torsions	Rings
6	A1EBD	A	708	-	-	4/6/14/14	0/1/1/1
2	NAG	A	703	1	-	3/6/23/26	0/1/1/1
4	Y01	A	706	-	-	10/19/77/77	0/4/4/4
2	NAG	A	702	1	-	4/6/23/26	0/1/1/1
2	NAG	A	701	1	-	3/6/23/26	0/1/1/1
4	Y01	A	705	-	-	12/19/77/77	0/4/4/4

All (5) bond length outliers are listed below:

Mol	Chain	Res	Type	Atoms	Z	Observed(Å)	Ideal(Å)
4	A	705	Y01	OAF-CAX	2.77	1.31	1.22
2	A	702	NAG	O5-C1	2.73	1.48	1.43
4	A	705	Y01	OAH-CAX	-2.67	1.21	1.30
6	A	708	A1EBD	C05-C06	-2.20	1.48	1.52
6	A	708	A1EBD	C01-C06	-2.16	1.48	1.52

All (4) bond angle outliers are listed below:

Mol	Chain	Res	Type	Atoms	Z	Observed(°)	Ideal(°)
6	A	708	A1EBD	O09-S07-O08	-3.87	101.26	116.52
2	A	702	NAG	C1-O5-C5	3.39	116.78	112.19
4	A	705	Y01	OAF-CAX-CAL	-3.02	113.37	123.08
4	A	705	Y01	OA-H-CAX-CAL	2.84	123.15	114.03

There are no chirality outliers.

All (36) torsion outliers are listed below:

Mol	Chain	Res	Type	Atoms
4	A	706	Y01	CAV-CBC-OAW-CAY
4	A	706	Y01	CAM-CAY-OAW-CBC
4	A	706	Y01	OAG-CAY-OAW-CBC
4	A	705	Y01	CAJ-CAO-CBB-CAC
4	A	705	Y01	CAC-CBB-CBE-CAP
4	A	705	Y01	CAC-CBB-CBE-CBI
4	A	705	Y01	CAO-CBB-CBE-CAP
4	A	705	Y01	CAO-CBB-CBE-CBI
2	A	702	NAG	O5-C5-C6-O6
4	A	705	Y01	CAJ-CAO-CBB-CBE
2	A	703	NAG	O5-C5-C6-O6
2	A	703	NAG	C4-C5-C6-O6
4	A	706	Y01	CAJ-CAO-CBB-CBE
2	A	702	NAG	C8-C7-N2-C2
2	A	702	NAG	O7-C7-N2-C2
2	A	701	NAG	O5-C5-C6-O6
4	A	706	Y01	CAJ-CAO-CBB-CAC
2	A	701	NAG	C4-C5-C6-O6
4	A	705	Y01	CAM-CAY-OAW-CBC
4	A	705	Y01	OAG-CAY-OAW-CBC
4	A	705	Y01	CAO-CAJ-CAN-CBA
4	A	705	Y01	CAN-CAJ-CAO-CBB
2	A	702	NAG	C4-C5-C6-O6
6	A	708	A1EBD	C01-C06-S07-O09
6	A	708	A1EBD	C05-C06-S07-O08
6	A	708	A1EBD	C05-C06-S07-O09
2	A	701	NAG	C3-C2-N2-C7
2	A	703	NAG	C3-C2-N2-C7
4	A	706	Y01	CAX-CAL-CAM-CAY
4	A	706	Y01	CAM-CAL-CAX-OAH
4	A	705	Y01	CAM-CAL-CAX-OAF
4	A	706	Y01	CAM-CAL-CAX-OAF

Continued on next page...

Continued from previous page...

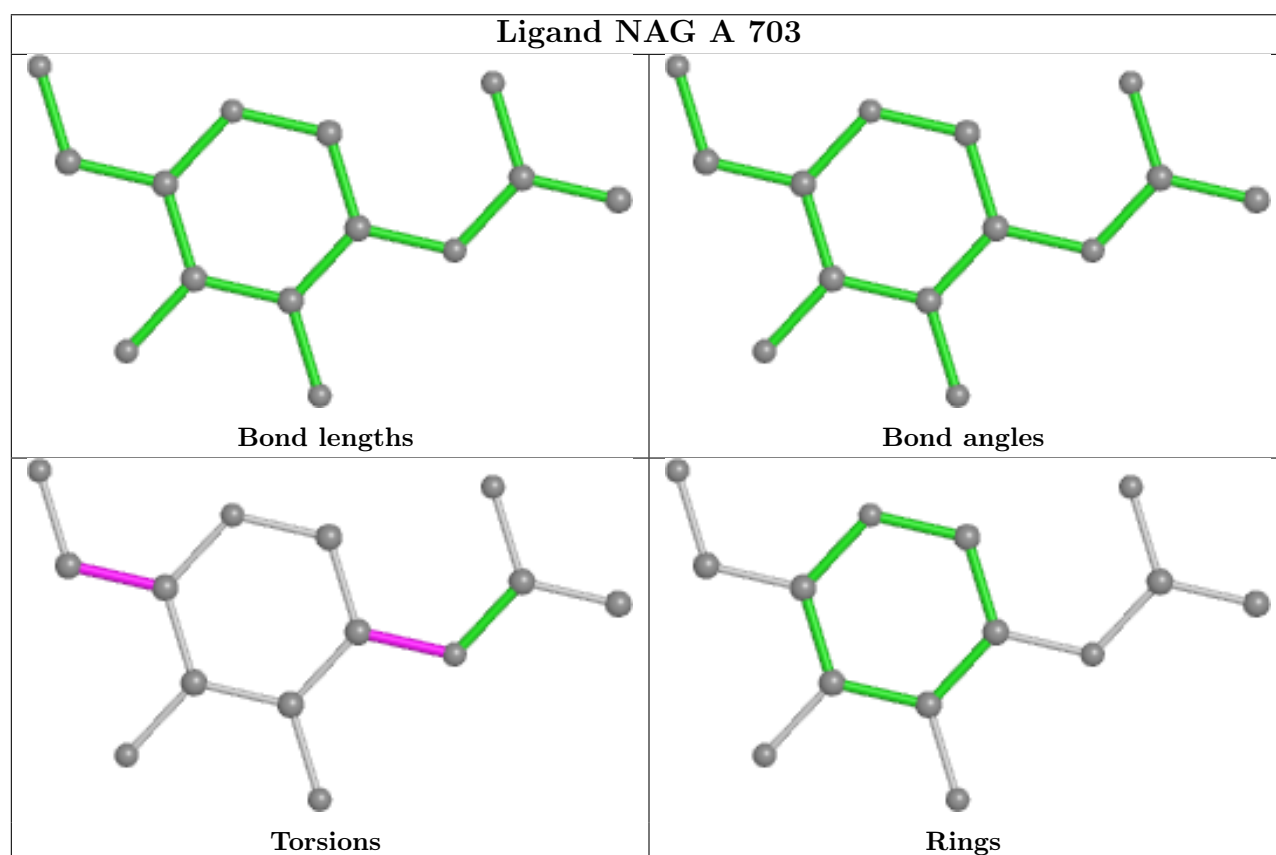
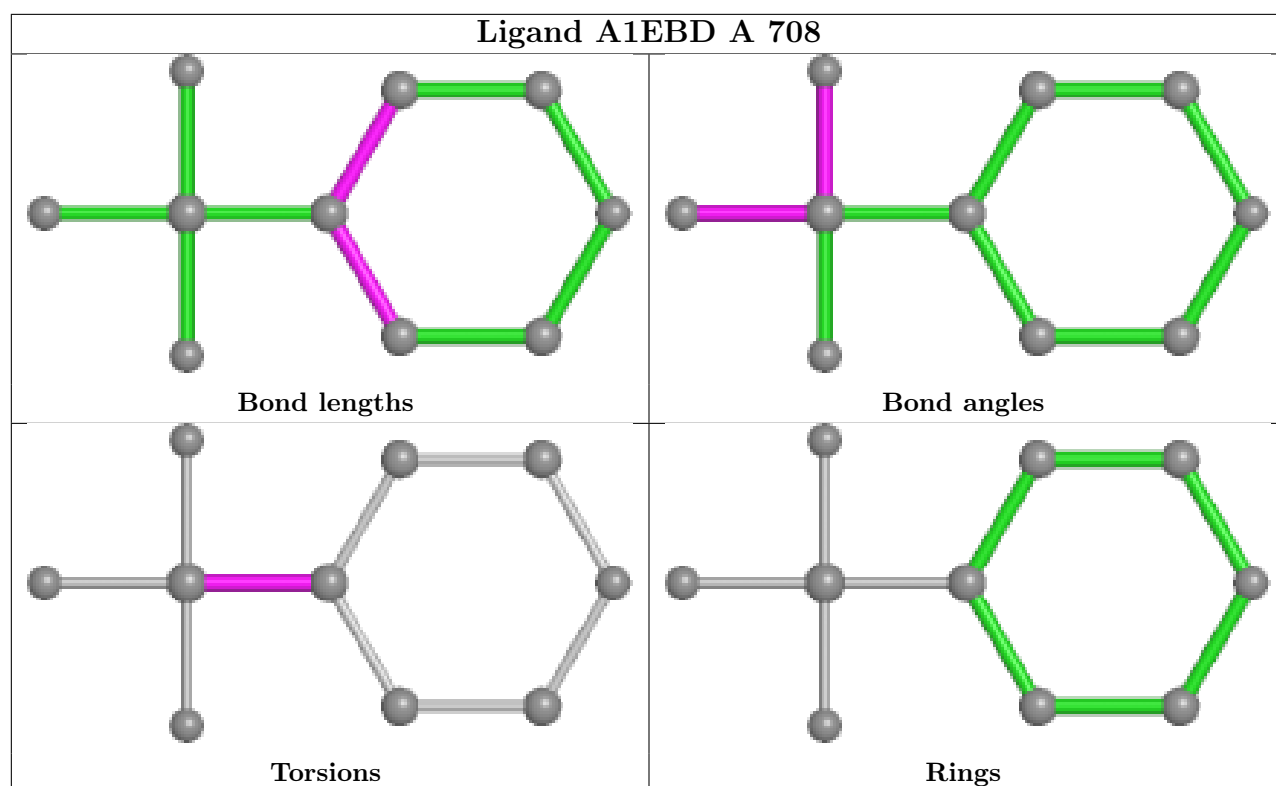
Mol	Chain	Res	Type	Atoms
4	A	706	Y01	CAL-CAM-CAY-OAW
4	A	705	Y01	CAM-CAL-CAX-OAH
4	A	706	Y01	CAL-CAM-CAY-OAG
6	A	708	A1EBD	C01-C06-S07-O08

There are no ring outliers.

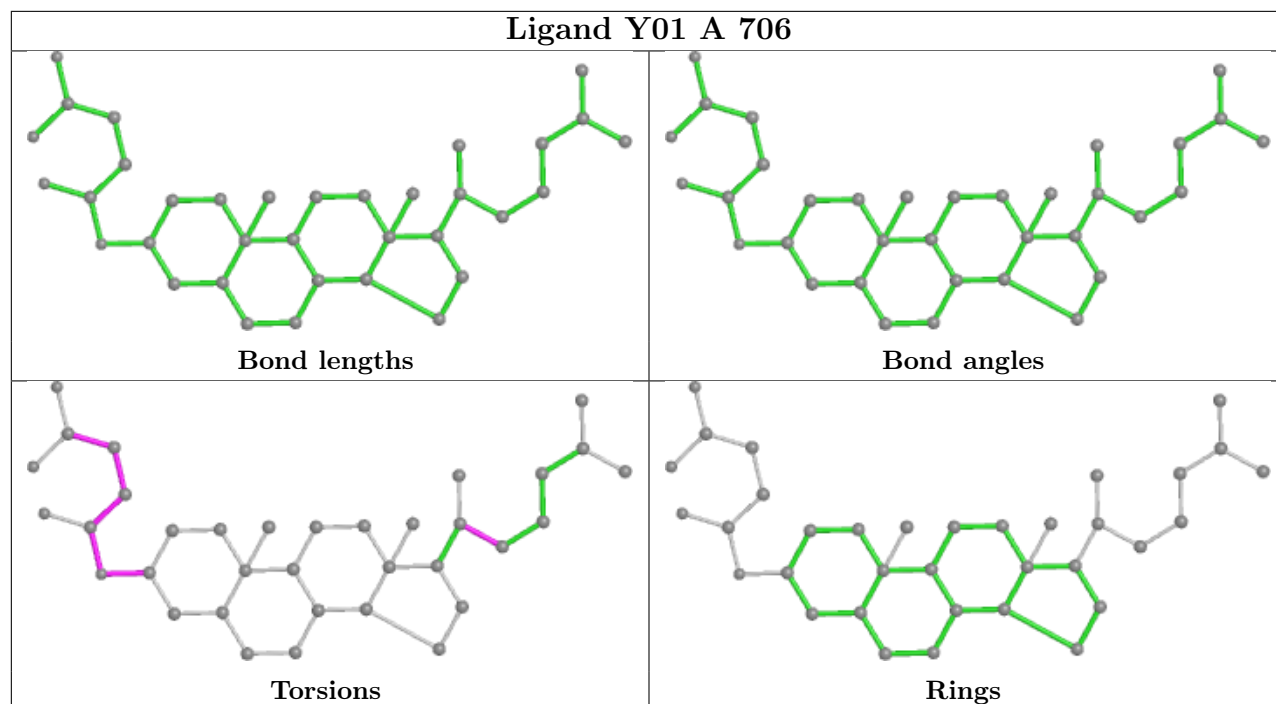
3 monomers are involved in 5 short contacts:

Mol	Chain	Res	Type	Clashes	Symm-Clashes
6	A	708	A1EBD	1	0
4	A	706	Y01	2	0
4	A	705	Y01	3	0

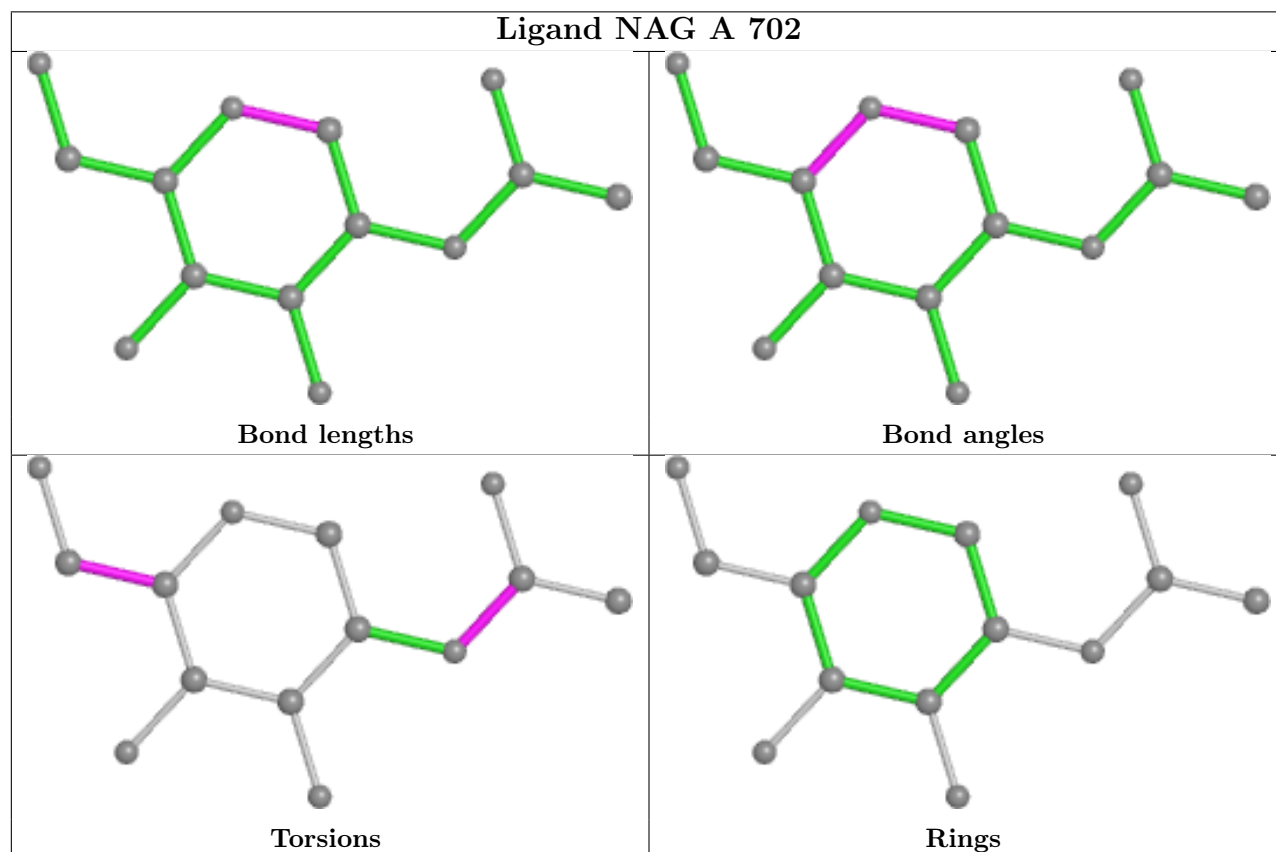
The following is a two-dimensional graphical depiction of Mogul quality analysis of bond lengths, bond angles, torsion angles, and ring geometry for all instances of the Ligand of Interest. In addition, ligands with molecular weight > 250 and outliers as shown on the validation Tables will also be included. For torsion angles, if less than 5% of the Mogul distribution of torsion angles is within 10 degrees of the torsion angle in question, then that torsion angle is considered an outlier. Any bond that is central to one or more torsion angles identified as an outlier by Mogul will be highlighted in the graph. For rings, the root-mean-square deviation (RMSD) between the ring in question and similar rings identified by Mogul is calculated over all ring torsion angles. If the average RMSD is greater than 60 degrees and the minimal RMSD between the ring in question and any Mogul-identified rings is also greater than 60 degrees, then that ring is considered an outlier. The outliers are highlighted in purple. The color gray indicates Mogul did not find sufficient equivalents in the CSD to analyse the geometry.

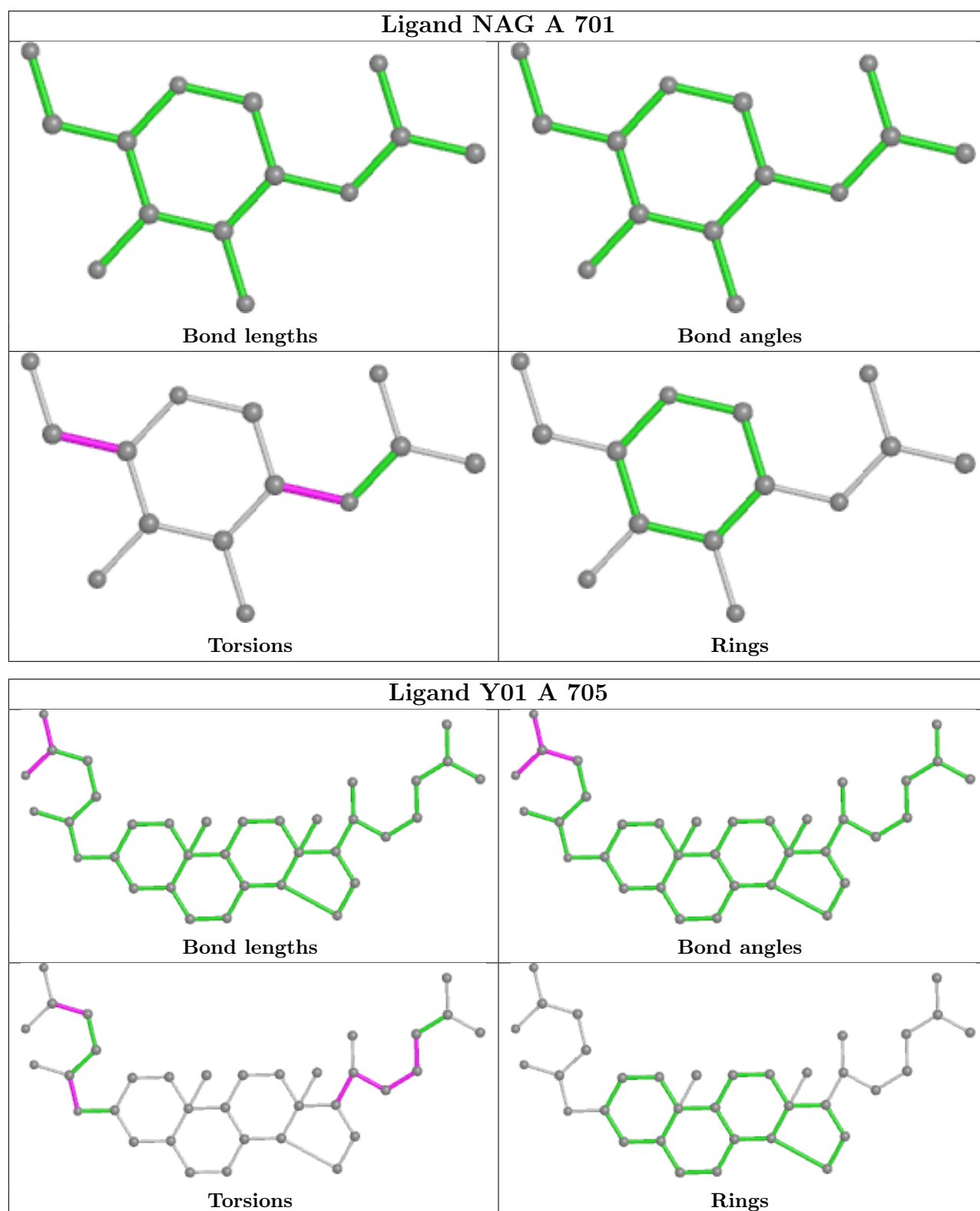


Ligand Y01 A 706



Ligand NAG A 702





5.7 Other polymers [i](#)

There are no such residues in this entry.

5.8 Polymer linkage issues ⓘ

There are no chain breaks in this entry.