



# wwPDB NMR Structure Validation Summary Report ⓘ

Dec 25, 2024 – 11:51 AM EST

PDB ID : 6JPD  
BMRB ID : 36243  
Title : Mouse receptor-interacting protein kinase 3 (RIP3) amyloid structure by solid-state NMR  
Authors : Wu, X.L.; Hu, H.; Zhang, J.; Dong, X.Q.; Wang, J.; Schwieters, C.; Wang, H.Y.; Lu, J.X.  
Deposited on : 2019-03-26

This is a wwPDB NMR Structure Validation Summary Report for a publicly released PDB entry.

We welcome your comments at [validation@mail.wwpdb.org](mailto:validation@mail.wwpdb.org)

A user guide is available at

<https://www.wwpdb.org/validation/2017/NMRValidationReportHelp>

with specific help available everywhere you see the ⓘ symbol.

The types of validation reports are described at

<http://www.wwpdb.org/validation/2017/FAQs#types>.

---

The following versions of software and data (see [references ⓘ](#)) were used in the production of this report:

MolProbity : 4.02b-467  
Percentile statistics : 20231227.v01 (using entries in the PDB archive December 27th 2023)  
wwPDB-RCI : v\_1n\_11\_5\_13\_A (Berjanski et al., 2005)  
PANAV : Wang et al. (2010)  
wwPDB-ShiftChecker : v1.2  
BMRB Restraints Analysis : v1.2  
Ideal geometry (proteins) : Engh & Huber (2001)  
Ideal geometry (DNA, RNA) : Parkinson et al. (1996)  
Validation Pipeline (wwPDB-VP) : 2.40

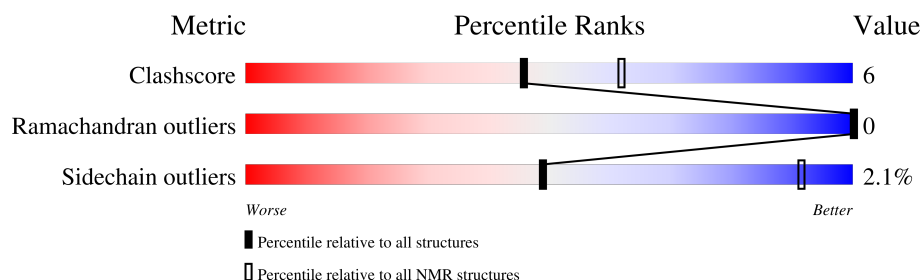
# 1 Overall quality at a glance

The following experimental techniques were used to determine the structure:

*SOLID-STATE NMR*

The overall completeness of chemical shifts assignment is 8%.

Percentile scores (ranging between 0-100) for global validation metrics of the entry are shown in the following graphic. The table shows the number of entries on which the scores are based.



Metric	Whole archive (#Entries)	NMR archive (#Entries)
Clashscore	210492	14027
Ramachandran outliers	207382	12486
Sidechain outliers	206894	12463

The table below summarises the geometric issues observed across the polymeric chains and their fit to the experimental data. The red, orange, yellow and green segments indicate the fraction of residues that contain outliers for  $\geq 3$ , 2, 1 and 0 types of geometric quality criteria. A cyan segment indicates the fraction of residues that are not part of the well-defined cores, and a grey segment represents the fraction of residues that are not modelled. The numeric value for each fraction is indicated below the corresponding segment, with a dot representing fractions  $\leq 5\%$

Mol	Chain	Length	Quality of chain
1	A	84	
1	B	84	
1	C	84	
1	D	84	
1	E	84	

## 2 Ensemble composition and analysis

This entry contains 10 models. Model 1 is the overall representative, medoid model (most similar to other models).

The following residues are included in the computation of the global validation metrics.

Well-defined (core) protein residues			
Well-defined core	Residue range (total)	Backbone RMSD (Å)	Medoid model
1	A:1-A:21, B:1-B:21, C:1-C:21, D:1-D:21, E:1-E:21 (105)	0.49	1

Ill-defined regions of proteins are excluded from the global statistics.

Ligands and non-protein polymers are included in the analysis.

The models can be grouped into 3 clusters. No single-model clusters were found.

Cluster number	Models
1	1, 3, 4, 8, 10
2	2, 5, 7
3	6, 9

### 3 Entry composition

There is only 1 type of molecule in this entry. The entry contains 1585 atoms, of which 775 are hydrogens and 0 are deuteriums.

- Molecule 1 is a protein called Receptor-interacting serine/threonine-protein kinase 3.

Mol	Chain	Residues	Atoms						Trace
1	A	21	Total	C	H	N	O	S	0
			317	101	155	29	31	1	
1	B	21	Total	C	H	N	O	S	0
			317	101	155	29	31	1	
1	C	21	Total	C	H	N	O	S	0
			317	101	155	29	31	1	
1	D	21	Total	C	H	N	O	S	0
			317	101	155	29	31	1	
1	E	21	Total	C	H	N	O	S	0
			317	101	155	29	31	1	

There are 30 discrepancies between the modelled and reference sequences:

Chain	Residue	Modelled	Actual	Comment	Reference
A	-37	HIS	-	expression tag	UNP Q9QZL0
A	-36	HIS	-	expression tag	UNP Q9QZL0
A	-35	HIS	-	expression tag	UNP Q9QZL0
A	-34	HIS	-	expression tag	UNP Q9QZL0
A	-33	HIS	-	expression tag	UNP Q9QZL0
A	-32	HIS	-	expression tag	UNP Q9QZL0
B	-37	HIS	-	expression tag	UNP Q9QZL0
B	-36	HIS	-	expression tag	UNP Q9QZL0
B	-35	HIS	-	expression tag	UNP Q9QZL0
B	-34	HIS	-	expression tag	UNP Q9QZL0
B	-33	HIS	-	expression tag	UNP Q9QZL0
B	-32	HIS	-	expression tag	UNP Q9QZL0
C	-37	HIS	-	expression tag	UNP Q9QZL0
C	-36	HIS	-	expression tag	UNP Q9QZL0
C	-35	HIS	-	expression tag	UNP Q9QZL0
C	-34	HIS	-	expression tag	UNP Q9QZL0
C	-33	HIS	-	expression tag	UNP Q9QZL0
C	-32	HIS	-	expression tag	UNP Q9QZL0
D	-37	HIS	-	expression tag	UNP Q9QZL0
D	-36	HIS	-	expression tag	UNP Q9QZL0
D	-35	HIS	-	expression tag	UNP Q9QZL0
D	-34	HIS	-	expression tag	UNP Q9QZL0
D	-33	HIS	-	expression tag	UNP Q9QZL0

*Continued on next page...*

*Continued from previous page...*

Chain	Residue	Modelled	Actual	Comment	Reference
D	-32	HIS	-	expression tag	UNP Q9QZL0
E	-37	HIS	-	expression tag	UNP Q9QZL0
E	-36	HIS	-	expression tag	UNP Q9QZL0
E	-35	HIS	-	expression tag	UNP Q9QZL0
E	-34	HIS	-	expression tag	UNP Q9QZL0
E	-33	HIS	-	expression tag	UNP Q9QZL0
E	-32	HIS	-	expression tag	UNP Q9QZL0



GLY  
ARG  
GLY  
TRP  
GLN  
PRO  
PHE  
HIS  
LYS

- Molecule 1: Receptor-interacting serine/threonine-protein kinase 3

Chain E:  23% 75%

HIS	HIS	HIS	HIS	HIS	GLY	PRO	PRO	GLN	ARG	ASN	GLN	GLY	ASP	GLY	ARG	HIS	GLY	THR	TRP	TRP	TYR	PRO	PRO	PRO	ASN	PRO	PRO	MET	THR	THR	GLY	PRO	ALA	ALA	LEU	V1	ALA	P19	P20	R21	THR	THR	ALA	ALA	SER	SER	SER	LYS	TYR	ASP	GLN	ALA	ALA	GLN	PHE	GLY
-----	-----	-----	-----	-----	-----	-----	-----	-----	-----	-----	-----	-----	-----	-----	-----	-----	-----	-----	-----	-----	-----	-----	-----	-----	-----	-----	-----	-----	-----	-----	-----	-----	-----	-----	-----	----	-----	-----	-----	-----	-----	-----	-----	-----	-----	-----	-----	-----	-----	-----	-----	-----	-----	-----	-----	-----

GLY  
ARG  
GLY  
TRP  
GLN  
PRO  
PHE  
HIS  
LYS

## 4.2 Residue scores for the representative (medoid) model from the NMR ensemble

The representative model is number 1. Colouring as in section 4.1 above.

- Molecule 1: Receptor-interacting serine/threonine-protein kinase 3

Chain A:  23% 75%

HIS	HIS	HIS	HIS	HIS	HIS	GLY	PRO	PRO	GLN	GLN	ARG	ASN	GLN	GLY	ASP	GLY	GLY	ARG	HIS	GLY	THR	PRO	PRO	TRP	TRP	TYR	PRO	PRO	PRO	ASN	PRO	PRO	MET	THR	GLY	GLY	PRO	ALA	ALA	LEU	V1	A18	P19	R20	R21	THR	THR	ALA	ALA	SER	SER	ALA	ALA	LYS	TYR	ASP	GLN	GLN	ALA	ALA	GLN	GLN	PHE	GLY
-----	-----	-----	-----	-----	-----	-----	-----	-----	-----	-----	-----	-----	-----	-----	-----	-----	-----	-----	-----	-----	-----	-----	-----	-----	-----	-----	-----	-----	-----	-----	-----	-----	-----	-----	-----	-----	-----	-----	-----	-----	----	-----	-----	-----	-----	-----	-----	-----	-----	-----	-----	-----	-----	-----	-----	-----	-----	-----	-----	-----	-----	-----	-----	-----

GLY  
ARG  
GLY  
TRP  
GLN  
PRO  
PHE  
HIS  
LYS

- Molecule 1: Receptor-interacting serine/threonine-protein kinase 3

Chain B:  23% 1% 75%

HIS	HIS	HIS	HIS	HIS	GLY	PRO	HIS	GLN	ARG	ASN	GLN	GLY	ASP	GLY	ARG	HIS	GLY	THR	THR	TRP	TYR	PRO	PRO	THR	THR	THR	GLY	GLY	PRO	ALA	ALA	LEU	V1	A18	P19	R20	R21	THR	THR	THR	ALA	ALA	SER	SER	SER	ALA	ALA	LYS	TYR	ASP	GLN	ALA	GLN	GLN	GLN	PHE	GLY
-----	-----	-----	-----	-----	-----	-----	-----	-----	-----	-----	-----	-----	-----	-----	-----	-----	-----	-----	-----	-----	-----	-----	-----	-----	-----	-----	-----	-----	-----	-----	-----	-----	----	-----	-----	-----	-----	-----	-----	-----	-----	-----	-----	-----	-----	-----	-----	-----	-----	-----	-----	-----	-----	-----	-----	-----	-----

GLY  
ARG  
GLY  
TRP  
GLN  
PRO  
PHE  
HIS  
LYS

- Molecule 1: Receptor-interacting serine/threonine-protein kinase 3

Chain C:  23% 1% 75%

[illegible]

GLY  
ARG  
GLY  
TRP  
GLN  
PRO  
PHE  
HIS  
LYS

- Molecule 1: Receptor-interacting serine/threonine-protein kinase 3

GLY  
ARG  
GLY  
TRP  
GLN  
PRO  
PHE  
HIS  
LYS

- GLY  
ARG  
GLY  
TRP  
GLN  
PRO  
PHE  
HIS  
LYS



## 5 Refinement protocol and experimental data overview

The models were refined using the following method: *simulated annealing*.

Of the 200 calculated structures, 10 were deposited, based on the following criterion: *structures with the lowest energy*.

The following table shows the software used for structure solution, optimisation and refinement.

Software name	Classification	Version
X-PLOR NIH	refinement	
X-PLOR NIH	structure calculation	

The following table shows chemical shift validation statistics as aggregates over all chemical shift files. Detailed validation can be found in section 7 of this report.

Chemical shift file(s)	working_cs.cif
Number of chemical shift lists	1
Total number of shifts	113
Number of shifts mapped to atoms	113
Number of unparsed shifts	0
Number of shifts with mapping errors	0
Number of shifts with mapping warnings	0
Assignment completeness (well-defined parts)	8%

Note: This is a solid-state NMR structure, where hydrogen atoms are typically not assigned a chemical shift value, which may lead to lower completeness of assignment measure.

## 6 Model quality [i](#)

### 6.1 Standard geometry [i](#)

There are no covalent bond-length or bond-angle outliers.

There are no bond-length outliers.

There are no bond-angle outliers.

There are no chirality outliers.

There are no planarity outliers.

### 6.2 Too-close contacts [i](#)

In the following table, the Non-H and H(model) columns list the number of non-hydrogen atoms and hydrogen atoms in each chain respectively. The H(added) column lists the number of hydrogen atoms added and optimized by MolProbity. The Clashes column lists the number of clashes averaged over the ensemble.

Mol	Chain	Non-H	H(model)	H(added)	Clashes
1	A	162	155	157	2±1
1	B	162	155	157	3±2
1	C	162	155	157	3±2
1	D	162	155	157	3±2
1	E	162	155	157	2±1
All	All	8100	7750	7850	96

The all-atom clashscore is defined as the number of clashes found per 1000 atoms (including hydrogen atoms). The all-atom clashscore for this structure is 6.

5 of 44 unique clashes are listed below, sorted by their clash magnitude.

Atom-1	Atom-2	Clash(Å)	Distance(Å)	Models	
				Worst	Total
1:C:8:VAL:HG12	1:D:8:VAL:HG22	0.66	1.66	9	4
1:D:8:VAL:HG12	1:E:8:VAL:HG22	0.66	1.66	9	4
1:A:8:VAL:HG12	1:B:8:VAL:HG22	0.66	1.66	9	4
1:B:8:VAL:HG12	1:C:8:VAL:HG22	0.66	1.66	9	4
1:A:10:ILE:HD11	1:B:3:ASN:HD21	0.66	1.50	2	1

## 6.3 Torsion angles

### 6.3.1 Protein backbone

In the following table, the Percentiles column shows the percent Ramachandran outliers of the chain as a percentile score with respect to all PDB entries followed by that with respect to all NMR entries. The Analysed column shows the number of residues for which the backbone conformation was analysed and the total number of residues.

Mol	Chain	Analysed	Favoured	Allowed	Outliers	Percentiles	
1	A	19/84 (23%)	18±1 (94±3%)	1±1 (6±3%)	0±0 (0±0%)	100	100
1	B	19/84 (23%)	18±1 (94±3%)	1±1 (6±3%)	0±0 (0±0%)	100	100
1	C	19/84 (23%)	18±1 (94±3%)	1±1 (6±3%)	0±0 (0±0%)	100	100
1	D	19/84 (23%)	18±1 (94±3%)	1±1 (6±3%)	0±0 (0±0%)	100	100
1	E	19/84 (23%)	18±1 (94±3%)	1±1 (6±3%)	0±0 (0±0%)	100	100
All	All	950/4200 (23%)	891 (94%)	59 (6%)	0 (0%)	100	100

There are no Ramachandran outliers.

### 6.3.2 Protein sidechains

In the following table, the Percentiles column shows the percent sidechain outliers of the chain as a percentile score with respect to all PDB entries followed by that with respect to all NMR entries. The Analysed column shows the number of residues for which the sidechain conformation was analysed and the total number of residues.

Mol	Chain	Analysed	Rotameric	Outliers	Percentiles	
1	A	19/70 (27%)	19±0 (98±3%)	0±0 (2±3%)	49	91
1	B	19/70 (27%)	19±0 (98±3%)	0±0 (2±3%)	49	91
1	C	19/70 (27%)	19±0 (98±3%)	0±0 (2±3%)	49	91
1	D	19/70 (27%)	19±0 (98±3%)	0±0 (2±3%)	49	91
1	E	19/70 (27%)	19±0 (98±3%)	0±0 (2±3%)	49	91
All	All	950/3500 (27%)	930 (98%)	20 (2%)	49	91

5 of 10 unique residues with a non-rotameric sidechain are listed below. They are sorted by the frequency of occurrence in the ensemble.

Mol	Chain	Res	Type	Models (Total)
1	A	5	CYS	3
1	B	5	CYS	3

*Continued on next page...*

*Continued from previous page...*

Mol	Chain	Res	Type	Models (Total)
1	C	5	CYS	3
1	D	5	CYS	3
1	E	5	CYS	3

### 6.3.3 RNA [i](#)

There are no RNA molecules in this entry.

## 6.4 Non-standard residues in protein, DNA, RNA chains [i](#)

There are no non-standard protein/DNA/RNA residues in this entry.

## 6.5 Carbohydrates [i](#)

There are no oligosaccharides in this entry.

## 6.6 Ligand geometry [i](#)

There are no ligands in this entry.

## 6.7 Other polymers [i](#)

There are no such molecules in this entry.

## 6.8 Polymer linkage issues [i](#)

There are no chain breaks in this entry.

## 7 Chemical shift validation

The completeness of assignment taking into account all chemical shift lists is 8% for the well-defined parts and 8% for the entire structure.

### 7.1 Chemical shift list 1

File name: `working_cs.cif`

Chemical shift list name: *starch\_output*

#### 7.1.1 Bookkeeping

The following table shows the results of parsing the chemical shift list and reports the number of nuclei with statistically unusual chemical shifts.

Total number of shifts	113
Number of shifts mapped to atoms	113
Number of unparsed shifts	0
Number of shifts with mapping errors	0
Number of shifts with mapping warnings	0
Number of shift outliers (ShiftChecker)	0

#### 7.1.2 Chemical shift referencing

No chemical shift referencing corrections were calculated (not enough data).

#### 7.1.3 Completeness of resonance assignments

The following table shows the completeness of the chemical shift assignments for the well-defined regions of the structure. The overall completeness is 8%, i.e. 111 atoms were assigned a chemical shift out of a possible 1385. 0 out of 20 assigned methyl groups (LEU and VAL) were assigned stereospecifically.

	Total	<sup>1</sup> H	<sup>13</sup> C	<sup>15</sup> N
Backbone	55/510 (11%)	0/205 (0%)	36/210 (17%)	19/95 (20%)
Sidechain	46/780 (6%)	0/505 (0%)	43/235 (18%)	3/40 (8%)
Aromatic	10/95 (11%)	0/45 (0%)	10/50 (20%)	0/0 (—%)
Overall	111/1385 (8%)	0/755 (0%)	89/495 (18%)	22/135 (16%)

Note: This is a solid-state NMR structure, where hydrogen atoms are typically not assigned a chemical shift value, which may lead to lower completeness of assignment measure.

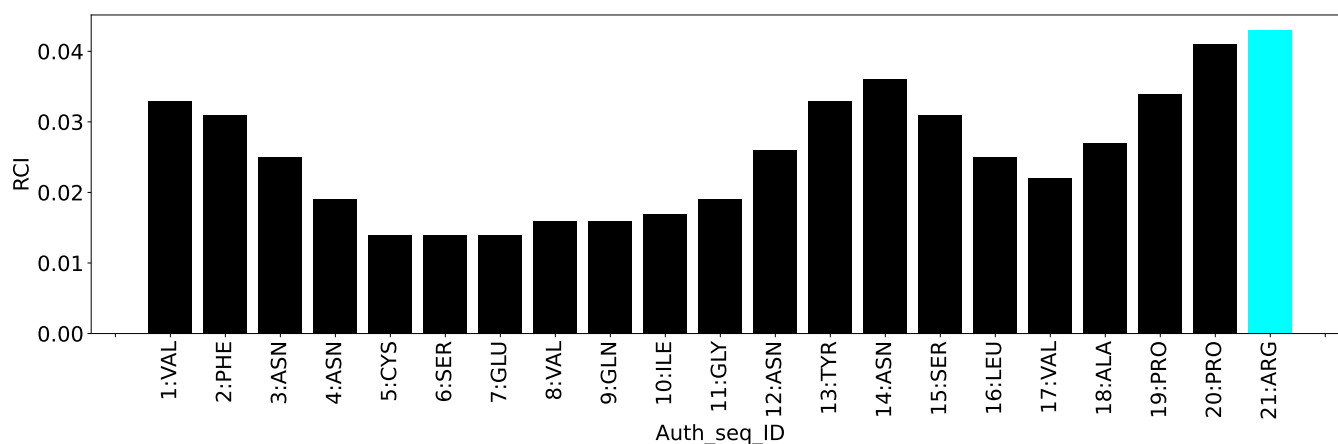
### 7.1.4 Statistically unusual chemical shifts [i](#)

There are no statistically unusual chemical shifts.

### 7.1.5 Random Coil Index (RCI) plots [i](#)

The image below reports *random coil index* values for the protein chains in the structure. The height of each bar gives a probability of a given residue to be disordered, as predicted from the available chemical shifts and the amino acid sequence. A value above 0.2 is an indication of significant predicted disorder. The colour of the bar shows whether the residue is in the well-defined core (black) or in the ill-defined residue ranges (cyan), as described in section 2 on ensemble composition. If well-defined core and ill-defined regions are not identified then it is shown as gray bars.

Random coil index (RCI) for chain A:



## 8 NMR restraints analysis

### 8.1 Conformationally restricting restraints

The following table provides the summary of experimentally observed NMR restraints in different categories. Restraints are classified into different categories based on the sequence separation of the atoms involved.

Description	Value
Total distance restraints	141
Intra-residue ( $ i-j =0$ )	0
Sequential ( $ i-j =1$ )	95
Medium range ( $ i-j >1$ and $ i-j <5$ )	21
Long range ( $ i-j \geq 5$ )	12
Inter-chain	3
Hydrogen bond restraints	10
Disulfide bond restraints	0
Total dihedral-angle restraints	185
Number of unmapped restraints	0
Number of restraints per residue	0.8
Number of long range restraints per residue <sup>1</sup>	0.0

<sup>1</sup>Long range hydrogen bonds and disulfide bonds are counted as long range restraints while calculating the number of long range restraints per residue

### 8.2 Residual restraint violations

This section provides the overview of the restraint violations analysis. The violations are binned as small, medium and large violations based on its absolute value. Average number of violations per model is calculated by dividing the total number of violations in each bin by the size of the ensemble.

#### 8.2.1 Average number of distance violations per model

Distance violations less than 0.1 Å are not included in the calculation.

Bins (Å)	Average number of violations per model	Max (Å)
0.1-0.2 (Small)	2.4	0.17
0.2-0.5 (Medium)	2.5	0.5
>0.5 (Large)	None	None

### 8.2.2 Average number of dihedral-angle violations per model [i](#)

Dihedral-angle violations less than 1° are not included in the calculation.

Bins (°)	Average number of violations per model	Max (°)
1.0-10.0 (Small)	7.0	3.1
10.0-20.0 (Medium)	None	None
>20.0 (Large)	None	None



## 9 Distance violation analysis ⓘ

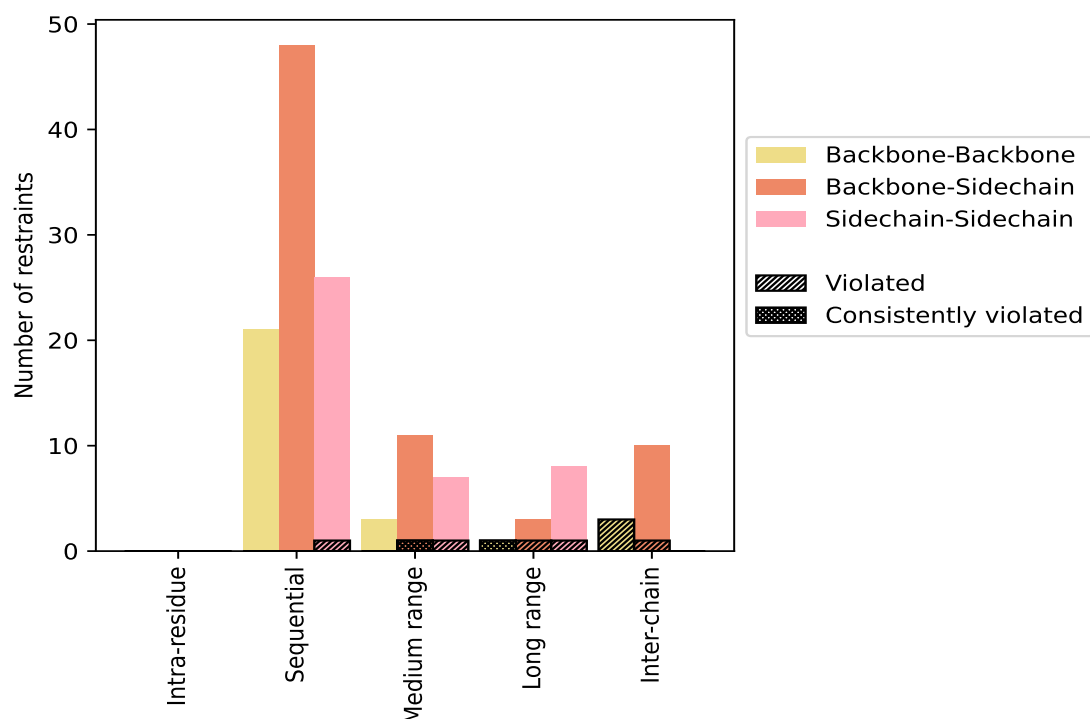
### 9.1 Summary of distance violations ⓘ

The following table shows the summary of distance violations in different restraint categories based on the sequence separation of the atoms involved. Each category is further sub-divided into three sub-categories based on the atoms involved. Violations less than 0.1 Å are not included in the statistics.

Restrains type	Count	% <sup>1</sup>	Violated <sup>3</sup>			Consistently Violated <sup>4</sup>		
			Count	% <sup>2</sup>	% <sup>1</sup>	Count	% <sup>2</sup>	% <sup>1</sup>
Intra-residue ( $ i-j =0$ )	0	0.0	0	0.0	0.0	0	0.0	0.0
Backbone-Backbone	0	0.0	0	0.0	0.0	0	0.0	0.0
Backbone-Sidechain	0	0.0	0	0.0	0.0	0	0.0	0.0
Sidechain-Sidechain	0	0.0	0	0.0	0.0	0	0.0	0.0
Sequential ( $ i-j =1$ )	95	67.4	1	1.1	0.7	0	0.0	0.0
Backbone-Backbone	21	14.9	0	0.0	0.0	0	0.0	0.0
Backbone-Sidechain	48	34.0	0	0.0	0.0	0	0.0	0.0
Sidechain-Sidechain	26	18.4	1	3.8	0.7	0	0.0	0.0
Medium range ( $ i-j >1$ & $ i-j <5$ )	21	14.9	2	9.5	1.4	1	4.8	0.7
Backbone-Backbone	3	2.1	0	0.0	0.0	0	0.0	0.0
Backbone-Sidechain	11	7.8	1	9.1	0.7	1	9.1	0.7
Sidechain-Sidechain	7	5.0	1	14.3	0.7	0	0.0	0.0
Long range ( $ i-j \geq 5$ )	12	8.5	3	25.0	2.1	1	8.3	0.7
Backbone-Backbone	1	0.7	1	100.0	0.7	1	100.0	0.7
Backbone-Sidechain	3	2.1	1	33.3	0.7	0	0.0	0.0
Sidechain-Sidechain	8	5.7	1	12.5	0.7	0	0.0	0.0
Inter-chain	3	2.1	3	100.0	2.1	0	0.0	0.0
Backbone-Backbone	3	2.1	3	100.0	2.1	0	0.0	0.0
Backbone-Sidechain	0	0.0	0	0.0	0.0	0	0.0	0.0
Sidechain-Sidechain	0	0.0	0	0.0	0.0	0	0.0	0.0
Hydrogen bond	10	7.1	1	10.0	0.7	0	0.0	0.0
Disulfide bond	0	0.0	0	0.0	0.0	0	0.0	0.0
Total	141	100.0	10	7.1	7.1	2	1.4	1.4
Backbone-Backbone	28	19.9	4	14.3	2.8	1	3.6	0.7
Backbone-Sidechain	72	51.1	3	4.2	2.1	1	1.4	0.7
Sidechain-Sidechain	41	29.1	3	7.3	2.1	0	0.0	0.0

<sup>1</sup> percentage calculated with respect to the total number of distance restraints, <sup>2</sup> percentage calculated with respect to the number of restraints in a particular restraint category, <sup>3</sup> violated in at least one model, <sup>4</sup> violated in all the models

### 9.1.1 Bar chart : Distribution of distance restraints and violations [i](#)



Violated and consistently violated restraints are shown using different hatch patterns in their respective categories. The hydrogen bonds and disulfied bonds are counted in their appropriate category on the x-axis

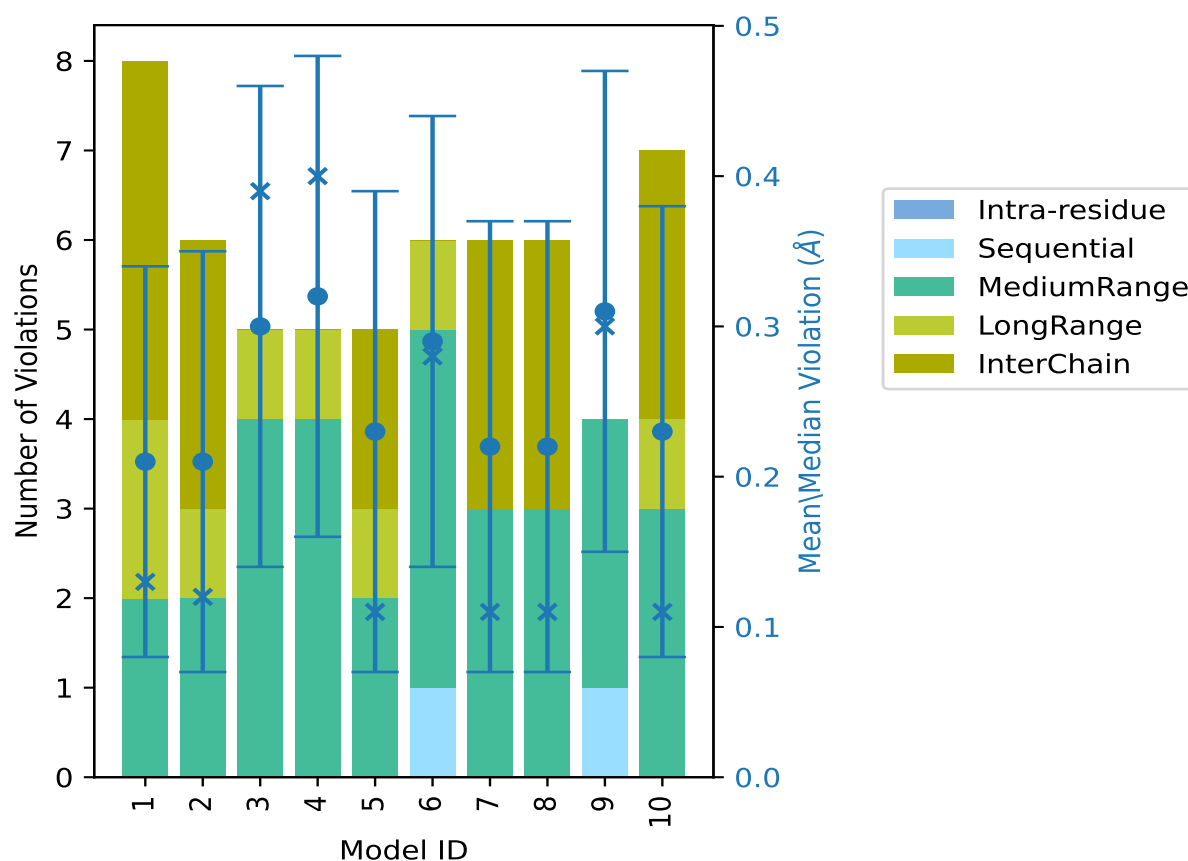
## 9.2 Distance violation statistics for each model [i](#)

The following table provides the distance violation statistics for each model in the ensemble. Violations less than 0.1 Å are not included in the statistics.

Model ID	Number of violations						Mean (Å)	Max (Å)	SD <sup>6</sup> (Å)	Median (Å)
	IR <sup>1</sup>	SQ <sup>2</sup>	MR <sup>3</sup>	LR <sup>4</sup>	IC <sup>5</sup>	Total				
1	0	0	2	2	4	8	0.21	0.43	0.13	0.13
2	0	0	2	1	3	6	0.21	0.43	0.14	0.12
3	0	0	4	1	0	5	0.3	0.47	0.16	0.39
4	0	0	4	1	0	5	0.32	0.49	0.16	0.4
5	0	0	2	1	2	5	0.23	0.43	0.16	0.11
6	0	1	4	1	0	6	0.29	0.48	0.15	0.28
7	0	0	3	0	3	6	0.22	0.44	0.15	0.11
8	0	0	3	0	3	6	0.22	0.43	0.15	0.11
9	0	1	3	0	0	4	0.31	0.5	0.16	0.3
10	0	0	3	1	3	7	0.23	0.43	0.15	0.11

<sup>1</sup>Intra-residue restraints, <sup>2</sup>Sequential restraints, <sup>3</sup>Medium range restraints, <sup>4</sup>Long range restraints, <sup>5</sup>Inter-chain restraints, <sup>6</sup>Standard deviation

### 9.2.1 Bar graph : Distance Violation statistics for each model [i](#)



The mean(dot),median(x) and the standard deviation are shown in blue with respect to the y axis on the right

### 9.3 Distance violation statistics for the ensemble [i](#)

Violation analysis may find that some restraints are violated in few models and some are violated in most of models. The following table provides this information as number of violated restraints for a given fraction of the ensemble. In total, 122(IR:0, SQ:94, MR:19, LR:9, IC:0) restraints are not violated in the ensemble.

Number of violated restraints						Fraction of the ensemble	
IR <sup>1</sup>	SQ <sup>2</sup>	MR <sup>3</sup>	LR <sup>4</sup>	IC <sup>5</sup>	Total	Count <sup>6</sup>	%
0	0	0	0	0	0	1	10.0
0	1	0	0	0	1	2	20.0
0	0	0	0	0	0	3	30.0

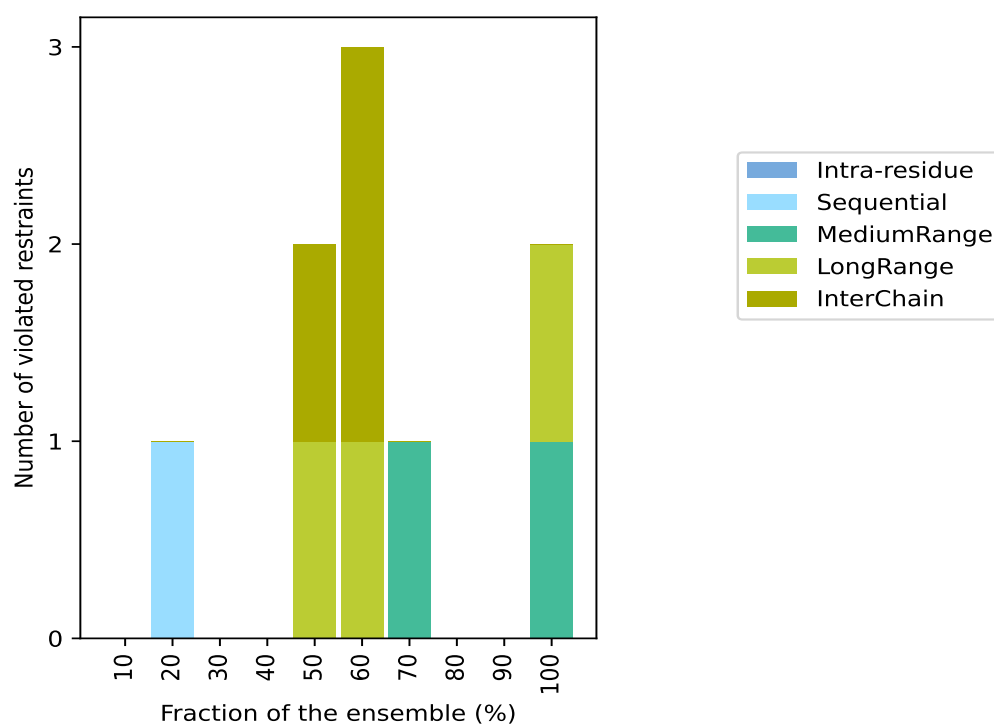
*Continued on next page...*

*Continued from previous page...*

Number of violated restraints						Fraction of the ensemble	
IR <sup>1</sup>	SQ <sup>2</sup>	MR <sup>3</sup>	LR <sup>4</sup>	IC <sup>5</sup>	Total	Count <sup>6</sup>	%
0	0	0	0	0	0	4	40.0
0	0	0	1	1	2	5	50.0
0	0	0	1	2	3	6	60.0
0	0	1	0	0	1	7	70.0
0	0	0	0	0	0	8	80.0
0	0	0	0	0	0	9	90.0
0	0	1	1	0	2	10	100.0

<sup>1</sup>Intra-residue restraints, <sup>2</sup>Sequential restraints, <sup>3</sup>Medium range restraints, <sup>4</sup>Long range restraints, <sup>5</sup>Inter-chain restraints, <sup>6</sup> Number of models with violations

### 9.3.1 Bar graph : Distance violation statistics for the ensemble [i](#)

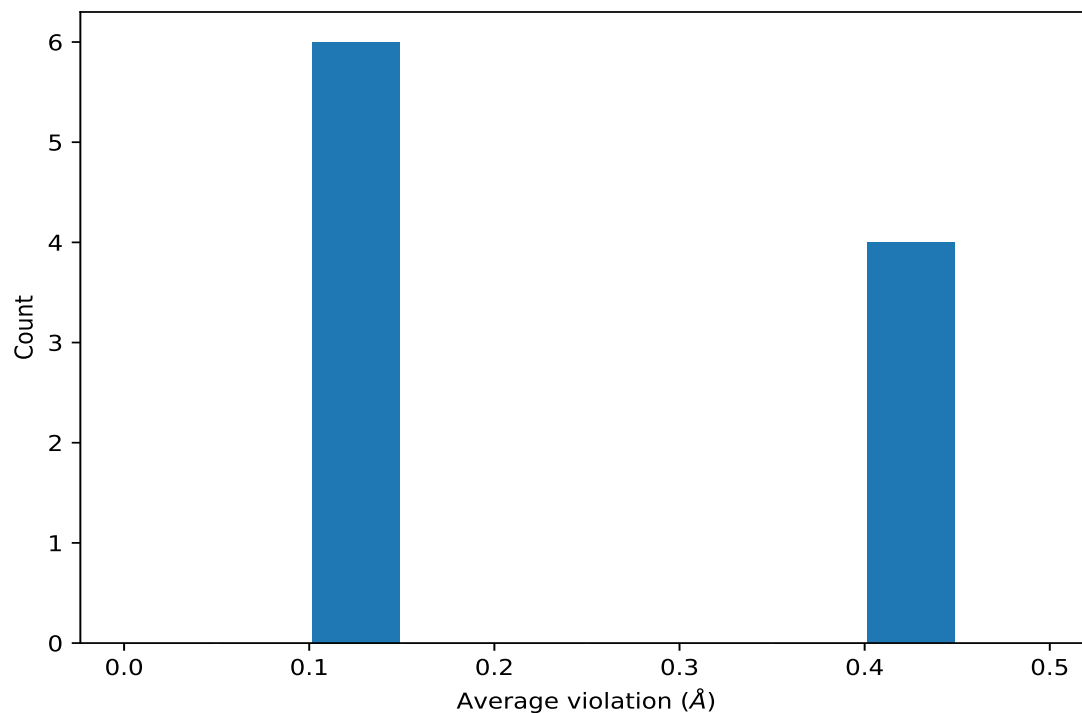


## 9.4 Most violated distance restraints in the ensemble [i](#)

### 9.4.1 Histogram : Distribution of mean distance violations [i](#)

The following histogram shows the distribution of the average value of the violation. The average is calculated for each restraint that is violated in more than one model over all the violated models

in the ensemble



#### 9.4.2 Table: Most violated distance restraints [i](#)

The following table provides the mean and the standard deviation of the violation for each restraint sorted by number of violated models and the mean value. The Key (restraint list ID, restraint ID) is the unique identifier for a given restraint. Rows with same key represent combinatorial or ambiguous restraints and are counted as a single restraint.

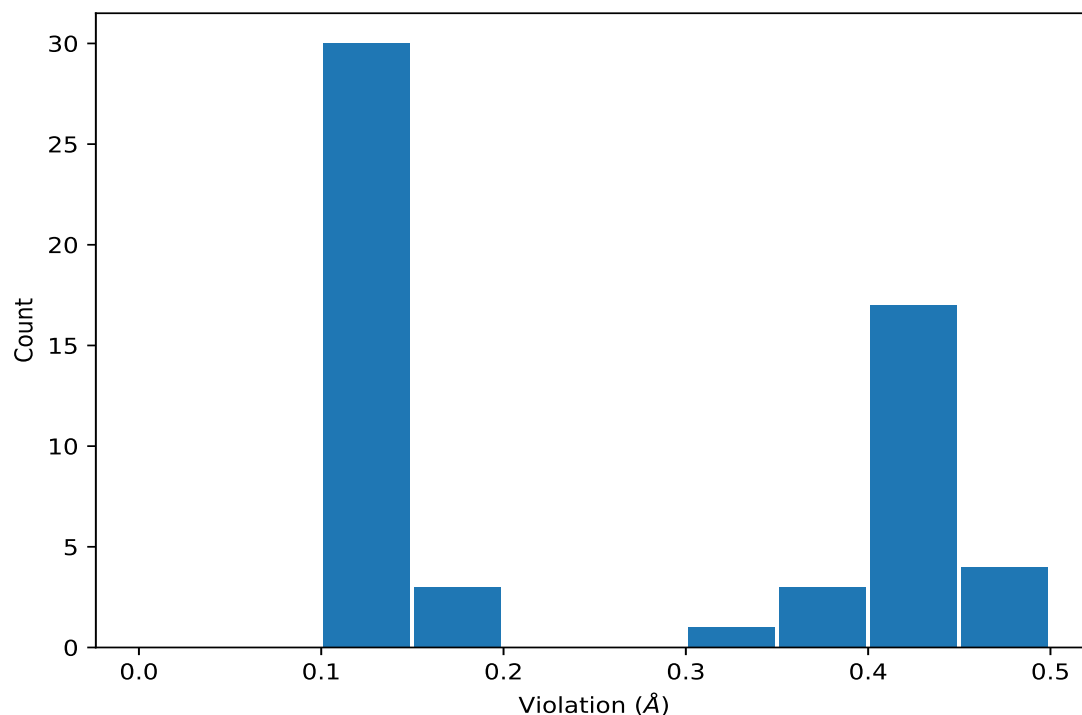
Key	Atom-1	Atom-2	Models <sup>1</sup>	Mean (Å)	SD <sup>1</sup> (Å)	Median (Å)
(5,19)	1:16:A:LEU:CD2	1:14:A:ASN:CA	10	0.44	0.02	0.43
(6,2)	1:15:A:SER:CA	1:11:A:GLY:C	10	0.41	0.02	0.4
(5,20)	1:16:A:LEU:CD2	1:14:A:ASN:CB	7	0.12	0.03	0.11
(6,3)	1:2:A:PHE:CG	1:10:A:ILE:CG1	6	0.13	0.02	0.12
(2,1)	1:4:A:ASN:CA	1:4:B:ASN:CA	6	0.11	0.0	0.11
(2,3)	1:15:A:SER:C	1:15:B:SER:C	6	0.1	0.0	0.11
(5,6)	1:9:A:GLN:CD	1:15:A:SER:CA	5	0.43	0.06	0.44
(5,6)	1:9:A:GLN:CD	1:7:A:GLU:CA	5	0.43	0.06	0.44
(2,2)	1:8:A:VAL:CA	1:8:B:VAL:CA	5	0.11	0.0	0.11
(1,81)	1:15:A:SER:CB	1:16:A:LEU:CD2	2	0.13	0.0	0.13

<sup>1</sup>Number of violated models, <sup>2</sup>Standard deviation

## 9.5 All violated distance restraints [i](#)

### 9.5.1 Histogram : Distribution of distance violations [i](#)

The following histogram shows the distribution of the absolute value of the violation for all violated restraints in the ensemble.



### 9.5.2 Table : All distance violations [i](#)

The following table provides the 10 worst performing restraints, sorted by the violation value. The Key (restraint list ID, restraint ID) is the unique identifier for a given restraint. Rows with same key represent combinatorial or ambiguous restraints and are counted as a single restraint.

Key	Atom-1	Atom-2	Model ID	Violation (Å)
(5,19)	1:16:A:LEU:CD2	1:14:A:ASN:CA	9	0.5
(5,6)	1:9:A:GLN:CD	1:7:A:GLU:CA	4	0.49
(5,19)	1:16:A:LEU:CD2	1:14:A:ASN:CA	6	0.48
(5,6)	1:9:A:GLN:CD	1:7:A:GLU:CA	3	0.47
(5,19)	1:16:A:LEU:CD2	1:14:A:ASN:CA	7	0.44
(5,6)	1:9:A:GLN:CD	1:7:A:GLU:CA	6	0.44
(6,2)	1:15:A:SER:CA	1:11:A:GLY:C	8	0.43
(6,2)	1:15:A:SER:CA	1:11:A:GLY:C	9	0.43
(5,19)	1:16:A:LEU:CD2	1:14:A:ASN:CA	1	0.43
(5,19)	1:16:A:LEU:CD2	1:14:A:ASN:CA	2	0.43

## 10 Dihedral-angle violation analysis [i](#)

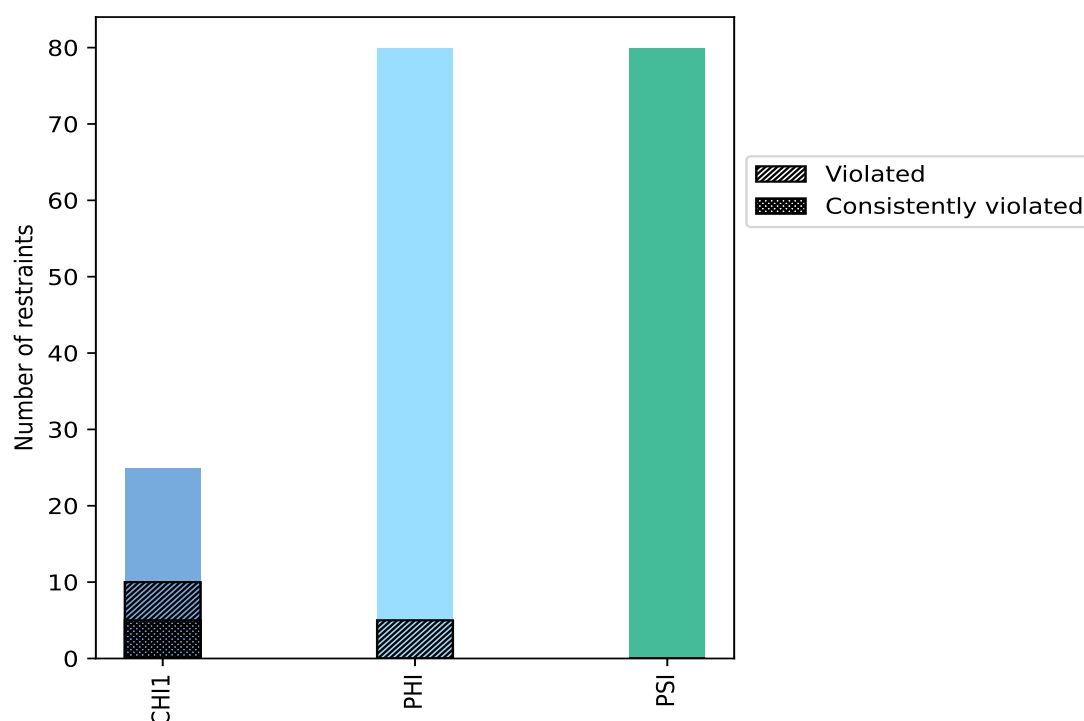
### 10.1 Summary of dihedral-angle violations [i](#)

The following table provides the summary of dihedral-angle violations in different dihedral-angle types. Violations less than 1° are not included in the calculation.

Angle type	Count	% <sup>1</sup>	Violated <sup>3</sup>			Consistently Violated <sup>4</sup>		
			Count	% <sup>2</sup>	% <sup>1</sup>	Count	% <sup>2</sup>	% <sup>1</sup>
CHI1	25	13.5	10	40.0	5.4	5	20.0	2.7
PHI	80	43.2	5	6.2	2.7	0	0.0	0.0
PSI	80	43.2	0	0.0	0.0	0	0.0	0.0
Total	185	100.0	15	8.1	8.1	5	2.7	2.7

<sup>1</sup> percentage calculated with respect to total number of dihedral-angle restraints, <sup>2</sup> percentage calculated with respect to number of restraints in a particular dihedral-angle type, <sup>3</sup> violated in at least one model, <sup>4</sup> violated in all the models

#### 10.1.1 Bar chart : Distribution of dihedral-angles and violations [i](#)



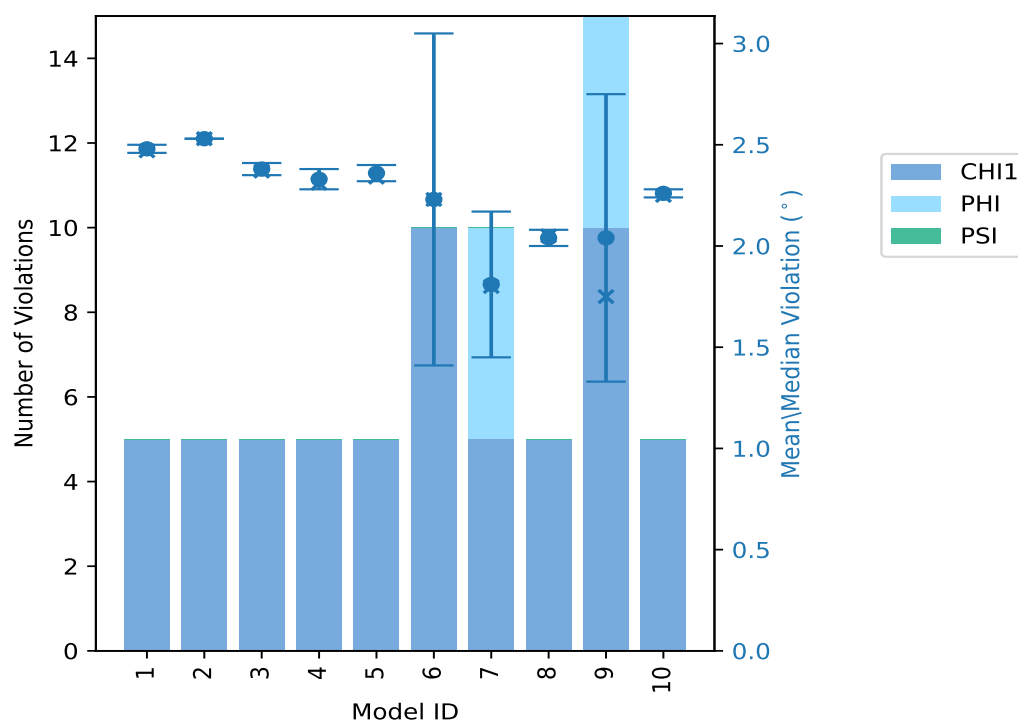
Violated and consistently violated restraints are shown using different hatch patterns in their respective categories

## 10.2 Dihedral-angle violation statistics for each model [i](#)

The following table provides the dihedral-angle violation statistics for each model in the ensemble. Violations less than 1° are not included in the statistics.

Model ID	Number of violations				Mean (°)	Max (°)	SD (°)	Median (°)
	CHI1	PHI	PSI	Total				
1	5	0	0	5	2.48	2.51	0.02	2.47
2	5	0	0	5	2.53	2.53	0.0	2.53
3	5	0	0	5	2.38	2.43	0.03	2.37
4	5	0	0	5	2.33	2.4	0.05	2.31
5	5	0	0	5	2.36	2.44	0.04	2.34
6	10	0	0	10	2.23	3.09	0.82	2.23
7	5	5	0	10	1.81	2.21	0.36	1.8
8	5	0	0	5	2.04	2.1	0.04	2.05
9	10	5	0	15	2.04	3.1	0.71	1.75
10	5	0	0	5	2.26	2.3	0.02	2.25

### 10.2.1 Bar graph : Dihedral violation statistics for each model [i](#)



The mean(dot),median(x) and the standard deviation are shown in blue with respect to the y axis on the right



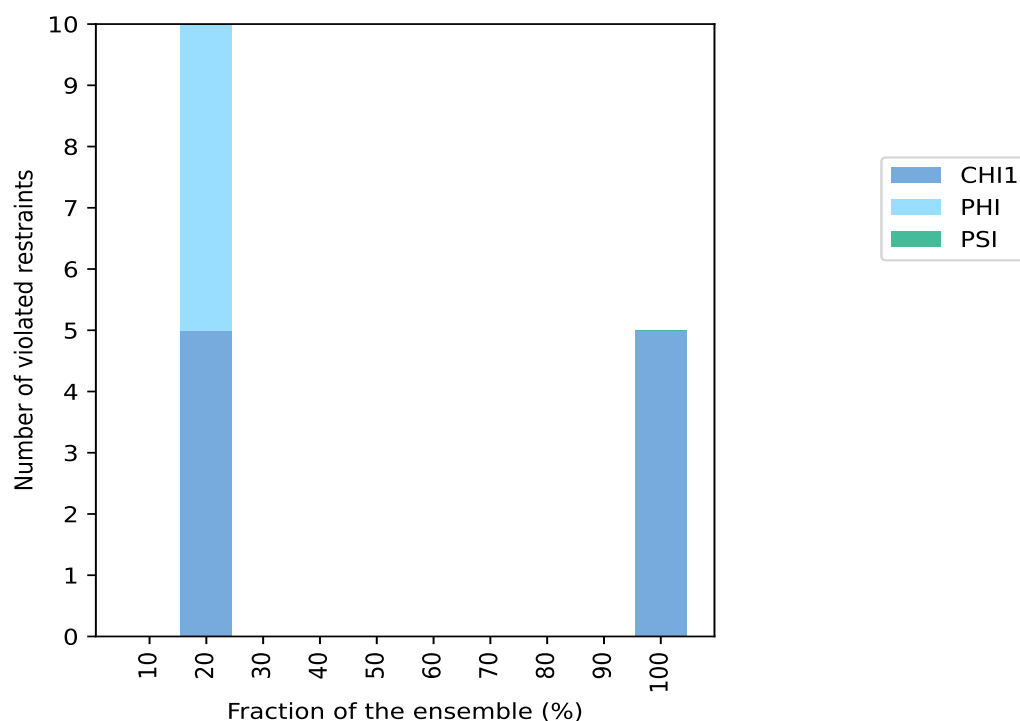
### 10.3 Dihedral-angle violation statistics for the ensemble [i](#)

Violation analysis may find that some restraints are violated in very few models and some are violated in most of models. The following table provides this information as number of violated restraints for a given fraction of ensemble.

Number of violated restraints				Fraction of the ensemble	
CHI1	PHI	PSI	Total	Count <sup>1</sup>	%
0	0	0	0	1	10.0
5	5	0	10	2	20.0
0	0	0	0	3	30.0
0	0	0	0	4	40.0
0	0	0	0	5	50.0
0	0	0	0	6	60.0
0	0	0	0	7	70.0
0	0	0	0	8	80.0
0	0	0	0	9	90.0
5	0	0	5	10	100.0

<sup>1</sup> Number of models with violations

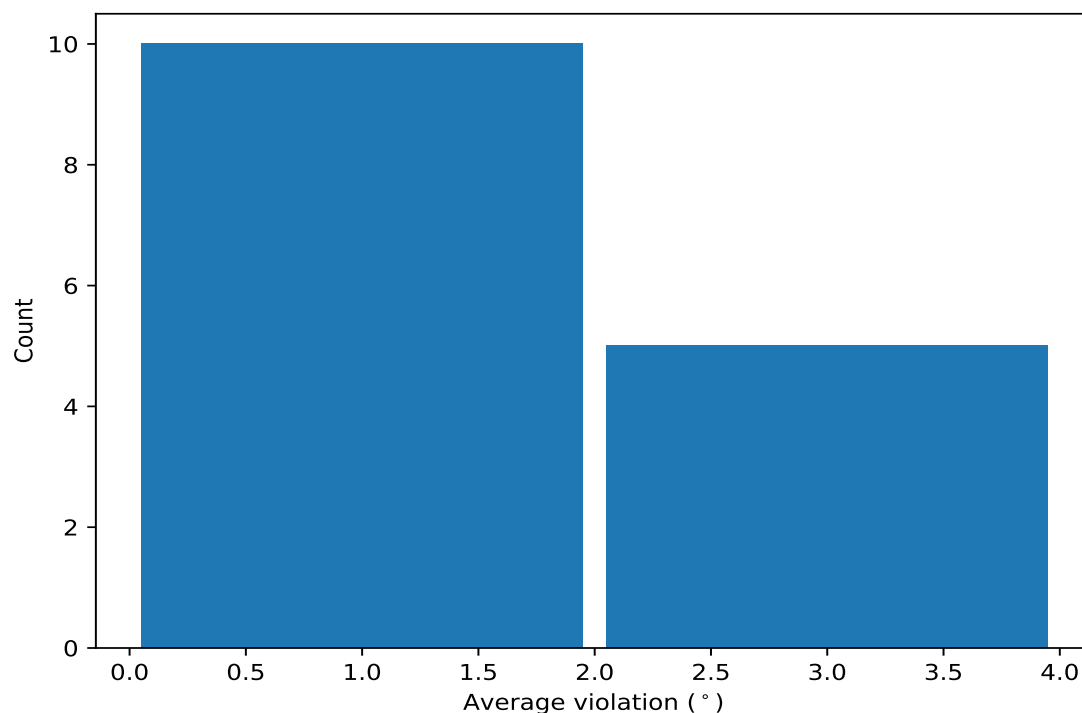
#### 10.3.1 Bar graph : Dihedral-angle Violation statistics for the ensemble [i](#)



## 10.4 Most violated dihedral-angle restraints in the ensemble [i](#)

### 10.4.1 Histogram : Distribution of mean dihedral-angle violations [i](#)

The following histogram shows the distribution of the average value of the violation. The average is calculated for each restraint that is violated in more than one model over all the violated models in the ensemble



### 10.4.2 Table: Most violated dihedral-angle restraints [i](#)

The following table provides the mean and the standard deviation of the violations for the 10 worst performing restraints, sorted by number of violated models and the mean violation value. The Key (restraint list ID, restraint ID) is the unique identifier for a given restraint.

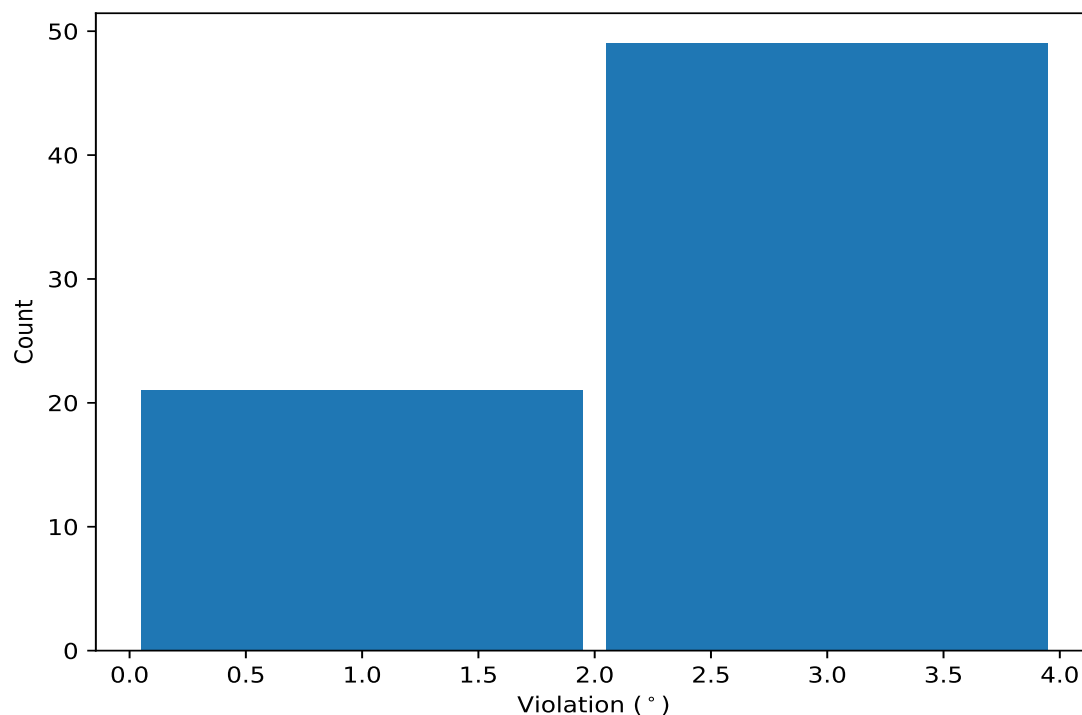
Key	Atom-1	Atom-2	Atom-3	Atom-4	Models <sup>1</sup>	Mean	SD <sup>2</sup>	Median
(1,175)	1:14:E:ASN:N	1:14:E:ASN:CA	1:14:E:ASN:CB	1:14:E:ASN:CG	10	2.47	0.33	2.44
(1,171)	1:14:A:ASN:N	1:14:A:ASN:CA	1:14:A:ASN:CB	1:14:A:ASN:CG	10	2.47	0.32	2.38
(1,172)	1:14:B:ASN:N	1:14:B:ASN:CA	1:14:B:ASN:CB	1:14:B:ASN:CG	10	2.47	0.34	2.34
(1,174)	1:14:D:ASN:N	1:14:D:ASN:CA	1:14:D:ASN:CB	1:14:D:ASN:CG	10	2.46	0.32	2.36
(1,173)	1:14:C:ASN:N	1:14:C:ASN:CA	1:14:C:ASN:CB	1:14:C:ASN:CG	10	2.45	0.3	2.38
(1,2)	1:1:B:VAL:C	1:2:B:PHE:N	1:2:B:PHE:CA	1:2:B:PHE:C	2	1.6	0.16	1.6
(1,1)	1:1:A:VAL:C	1:2:A:PHE:N	1:2:A:PHE:CA	1:2:A:PHE:C	2	1.6	0.15	1.6
(1,3)	1:1:C:VAL:C	1:2:C:PHE:N	1:2:C:PHE:CA	1:2:C:PHE:C	2	1.6	0.1	1.6
(1,5)	1:1:E:VAL:C	1:2:E:PHE:N	1:2:E:PHE:CA	1:2:E:PHE:C	2	1.6	0.18	1.6
(1,4)	1:1:D:VAL:C	1:2:D:PHE:N	1:2:D:PHE:CA	1:2:D:PHE:C	2	1.57	0.15	1.57

<sup>1</sup> Number of violated models, <sup>2</sup>Standard deviation, All angle values are in degree (°)

## 10.5 All violated dihedral-angle restraints [i](#)

### 10.5.1 Histogram : Distribution of violations [i](#)

The following histogram shows the distribution of the absolute value of the violation for all violated restraints in the ensemble.



### 10.5.2 Table: All violated dihedral-angle restraints [i](#)

The following table provides the list of violations for the 10 worst performing restraints, sorted by the violation value. The Key (restraint list ID, restraint ID) is the unique identifier for a given restraint.

Key	Atom-1	Atom-2	Atom-3	Atom-4	Model ID	Violation (°)
(1,172)	1:14:B:ASN:N	1:14:B:ASN:CA	1:14:B:ASN:CB	1:14:B:ASN:CG	9	3.1
(1,174)	1:14:D:ASN:N	1:14:D:ASN:CA	1:14:D:ASN:CB	1:14:D:ASN:CG	6	3.09
(1,172)	1:14:B:ASN:N	1:14:B:ASN:CA	1:14:B:ASN:CB	1:14:B:ASN:CG	6	3.08
(1,175)	1:14:E:ASN:N	1:14:E:ASN:CA	1:14:E:ASN:CB	1:14:E:ASN:CG	9	3.07
(1,175)	1:14:E:ASN:N	1:14:E:ASN:CA	1:14:E:ASN:CB	1:14:E:ASN:CG	6	3.06
(1,171)	1:14:A:ASN:N	1:14:A:ASN:CA	1:14:A:ASN:CB	1:14:A:ASN:CG	9	3.05
(1,171)	1:14:A:ASN:N	1:14:A:ASN:CA	1:14:A:ASN:CB	1:14:A:ASN:CG	6	3.04
(1,173)	1:14:C:ASN:N	1:14:C:ASN:CA	1:14:C:ASN:CB	1:14:C:ASN:CG	6	2.99
(1,174)	1:14:D:ASN:N	1:14:D:ASN:CA	1:14:D:ASN:CB	1:14:D:ASN:CG	9	2.98
(1,173)	1:14:C:ASN:N	1:14:C:ASN:CA	1:14:C:ASN:CB	1:14:C:ASN:CG	9	2.93