



# Full wwPDB X-ray Structure Validation Report ⓘ

Oct 14, 2025 – 10:39 AM JST

PDB ID : 9JZB / pdb\_00009jzb  
Title : PfDXR - Mn2+ - MAMK251 ternary complex  
Authors : Takada, S.; Sakamoto, Y.; Tanaka, N.  
Deposited on : 2024-10-14  
Resolution : 1.47 Å(reported)

This is a Full wwPDB X-ray Structure Validation Report for a publicly released PDB entry.

We welcome your comments at [validation@mail.wwpdb.org](mailto:validation@mail.wwpdb.org)

A user guide is available at

<https://www.wwpdb.org/validation/2017/XrayValidationReportHelp>

with specific help available everywhere you see the ⓘ symbol.

The types of validation reports are described at

<http://www.wwpdb.org/validation/2017/FAQs#types>.

---

The following versions of software and data (see [references ⓘ](#)) were used in the production of this report:

MolProbity : 4-5-2 with Phenix2.0  
Mogul : 1.8.5 (274361), CSD as541be (2020)  
Xtriage (Phenix) : 2.0  
EDS : 3.0  
buster-report : 1.1.7 (2018)  
Percentile statistics : 20231227.v01 (using entries in the PDB archive December 27th 2023)  
CCP4 : 9.0.010 (Gargrove)  
Density-Fitness : 1.0.12  
Ideal geometry (proteins) : Engh & Huber (2001)  
Ideal geometry (DNA, RNA) : Parkinson et al. (1996)  
Validation Pipeline (wwPDB-VP) : 2.46

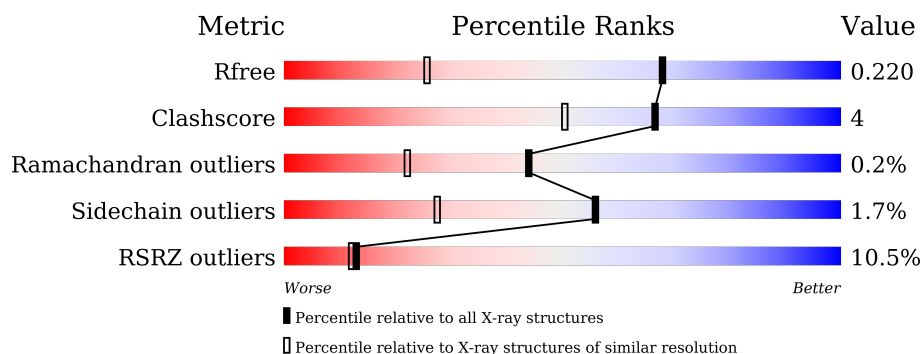
# 1 Overall quality at a glance

The following experimental techniques were used to determine the structure:

*X-RAY DIFFRACTION*



The reported resolution of this entry is 1.47 Å.

Percentile scores (ranging between 0-100) for global validation metrics of the entry are shown in the following graphic. The table shows the number of entries on which the scores are based.



Metric	Whole archive (#Entries)	Similar resolution (#Entries, resolution range(Å))
$R_{free}$	164625	6131 (1.50-1.46)
Clashscore	180529	6623 (1.50-1.46)
Ramachandran outliers	177936	6521 (1.50-1.46)
Sidechain outliers	177891	6518 (1.50-1.46)
RSRZ outliers	164620	6132 (1.50-1.46)

The table below summarises the geometric issues observed across the polymeric chains and their fit to the electron density. The red, orange, yellow and green segments of the lower bar indicate the fraction of residues that contain outliers for  $\geq 3$ , 2, 1 and 0 types of geometric quality criteria respectively. A grey segment represents the fraction of residues that are not modelled. The numeric value for each fraction is indicated below the corresponding segment, with a dot representing fractions  $\leq 5\%$ . The upper red bar (where present) indicates the fraction of residues that have poor fit to the electron density. The numeric value is given above the bar.

Mol	Chain	Length	Quality of chain
1	A	488	
1	B	488	

## 2 Entry composition [i](#)

There are 6 unique types of molecules in this entry. The entry contains 7039 atoms, of which 0 are hydrogens and 0 are deuteriums.

In the tables below, the ZeroOcc column contains the number of atoms modelled with zero occupancy, the AltConf column contains the number of residues with at least one atom in alternate conformation and the Trace column contains the number of residues modelled with at most 2 atoms.

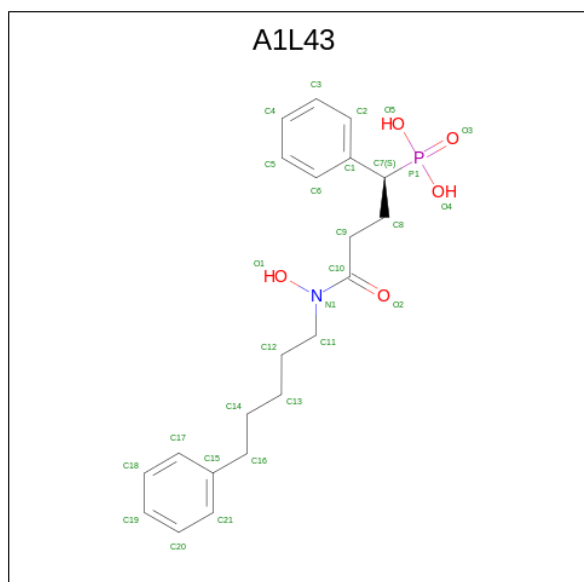
- Molecule 1 is a protein called 1-deoxy-D-xylulose 5-phosphate reductoisomerase, apicoplastic.

Mol	Chain	Residues	Atoms					ZeroOcc	AltConf	Trace
1	A	407	Total	C	N	O	S	0	0	0
			3245	2081	531	613	20			
1	B	411	Total	C	N	O	S	0	0	0
			3285	2109	539	617	20			

- Molecule 2 is MANGANESE (II) ION (CCD ID: MN) (formula: Mn) (labeled as "Ligand of Interest" by depositor).

Mol	Chain	Residues	Atoms		ZeroOcc	AltConf
2	A	1	Total	Mn	0	0
			1	1		
2	B	1	Total	Mn	0	0
			1	1		

- Molecule 3 is [(1 {S})-4-oxidanylidene-4-[oxidanyl(5-phenylpentyl)amino]-1-phenyl-butyl]phosphonic acid (CCD ID: A1L43) (formula: C<sub>21</sub>H<sub>28</sub>NO<sub>5</sub>P) (labeled as "Ligand of Interest" by depositor).



Mol	Chain	Residues	Atoms					ZeroOcc	AltConf
3	A	1	Total	C	N	O	P	0	0
			28	21	1	5	1		
3	B	1	Total	C	N	O	P	0	0
			28	21	1	5	1		

- Molecule 4 is GLYCEROL (CCD ID: GOL) (formula:  $C_3H_8O_3$ ).



Mol	Chain	Residues	Atoms			ZeroOcc	AltConf
4	A	1	Total	C	O	0	0
			6	3	3		
4	B	1	Total	C	O	0	0
			6	3	3		

- Molecule 5 is CALCIUM ION (CCD ID: CA) (formula: Ca).

Mol	Chain	Residues	Atoms		ZeroOcc	AltConf
5	B	3	Total	Ca	0	0
			3	3		

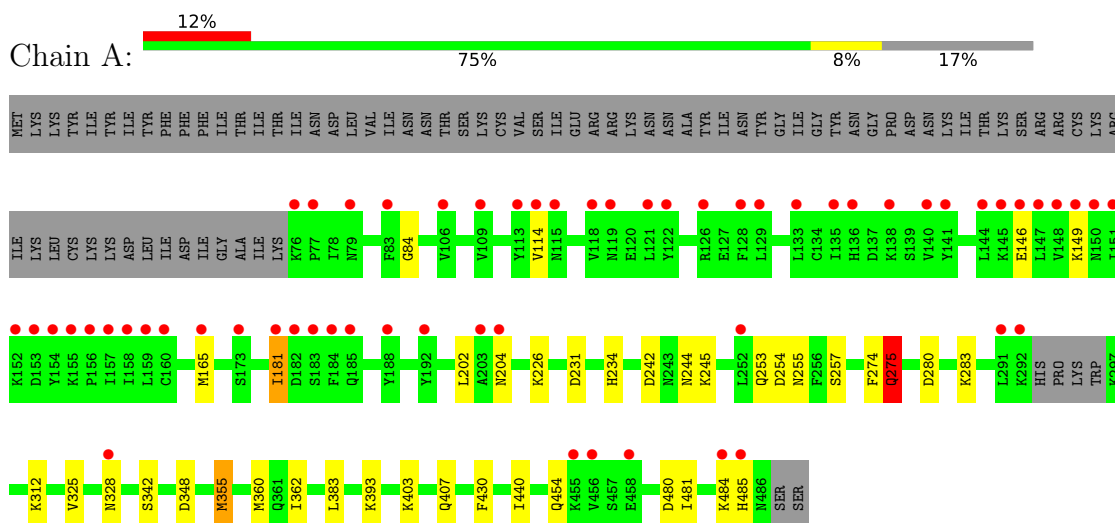
- Molecule 6 is water.

Mol	Chain	Residues	Atoms		ZeroOcc	AltConf
6	A	208	Total	O	0	0
			208	208		
6	B	228	Total	O	0	0
			228	228		

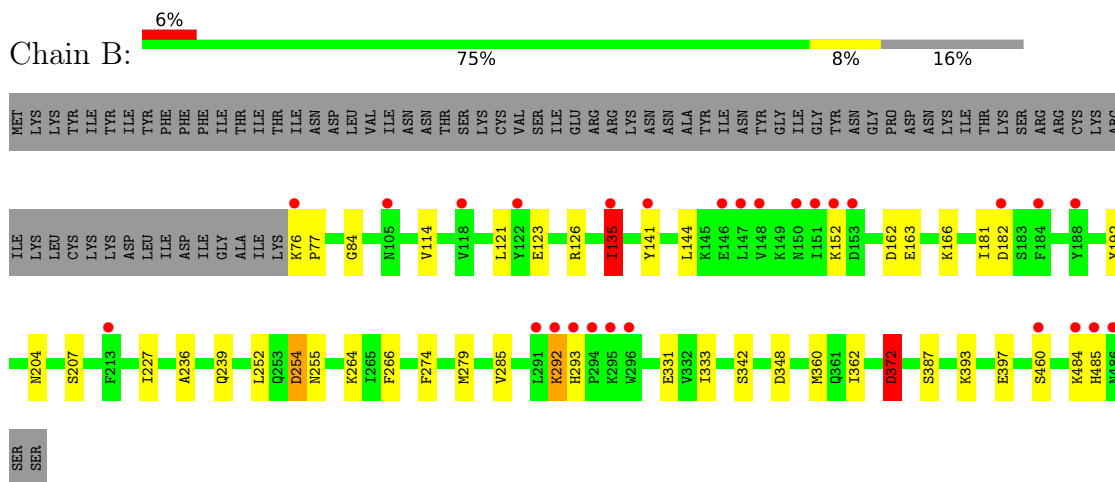
### 3 Residue-property plots

These plots are drawn for all protein, RNA, DNA and oligosaccharide chains in the entry. The first graphic for a chain summarises the proportions of the various outlier classes displayed in the second graphic. The second graphic shows the sequence view annotated by issues in geometry and electron density. Residues are color-coded according to the number of geometric quality criteria for which they contain at least one outlier: green = 0, yellow = 1, orange = 2 and red = 3 or more. A red dot above a residue indicates a poor fit to the electron density ( $RSRZ > 2$ ). Stretches of 2 or more consecutive residues without any outlier are shown as a green connector. Residues present in the sample, but not in the model, are shown in grey.

- Molecule 1: 1-deoxy-D-xylulose 5-phosphate reductoisomerase, apicoplasmic



- Molecule 1: 1-deoxy-D-xylulose 5-phosphate reductoisomerase, apicoplasmic



## 4 Data and refinement statistics

Property	Value	Source
Space group	P 1 21 1	Depositor
Cell constants a, b, c, $\alpha$ , $\beta$ , $\gamma$	51.52Å 76.39Å 110.73Å 90.00° 92.46° 90.00°	Depositor
Resolution (Å)	55.31 – 1.47 55.31 – 1.47	Depositor EDS
% Data completeness (in resolution range)	98.4 (55.31-1.47) 98.4 (55.31-1.47)	Depositor EDS
$R_{merge}$	(Not available)	Depositor
$R_{sym}$	(Not available)	Depositor
$\langle I/\sigma(I) \rangle$ <sup>1</sup>	1.23 (at 1.47Å)	Xtriage
Refinement program	REFMAC 5	Depositor
R, $R_{free}$	0.195 , 0.219 0.195 , 0.220	Depositor DCC
$R_{free}$ test set	7341 reflections (5.12%)	wwPDB-VP
Wilson B-factor (Å <sup>2</sup> )	16.6	Xtriage
Anisotropy	0.232	Xtriage
Bulk solvent $k_{sol}$ (e/Å <sup>3</sup> ), $B_{sol}$ (Å <sup>2</sup> )	0.38 , 37.3	EDS
L-test for twinning <sup>2</sup>	$\langle  L  \rangle = 0.47$ , $\langle L^2 \rangle = 0.30$	Xtriage
Estimated twinning fraction	0.032 for h,-k,-l	Xtriage
$F_o, F_c$ correlation	0.95	EDS
Total number of atoms	7039	wwPDB-VP
Average B, all atoms (Å <sup>2</sup> )	23.0	wwPDB-VP

Xtriage's analysis on translational NCS is as follows: *The largest off-origin peak in the Patterson function is 5.91% of the height of the origin peak. No significant pseudotranslation is detected.*

<sup>1</sup>Intensities estimated from amplitudes.

<sup>2</sup>Theoretical values of  $\langle |L| \rangle$ ,  $\langle L^2 \rangle$  for acentric reflections are 0.5, 0.333 respectively for untwinned datasets, and 0.375, 0.2 for perfectly twinned datasets.

## 5 Model quality ⓘ

### 5.1 Standard geometry ⓘ

Bond lengths and bond angles in the following residue types are not validated in this section: A1L43, GOL, MN, CA

The Z score for a bond length (or angle) is the number of standard deviations the observed value is removed from the expected value. A bond length (or angle) with  $|Z| > 5$  is considered an outlier worth inspection. RMSZ is the root-mean-square of all Z scores of the bond lengths (or angles).

Mol	Chain	Bond lengths		Bond angles	
		RMSZ	# Z  >5	RMSZ	# Z  >5
1	A	0.70	0/3303	1.14	9/4457 (0.2%)
1	B	0.70	0/3348	1.11	11/4521 (0.2%)
All	All	0.70	0/6651	1.13	20/8978 (0.2%)

There are no bond length outliers.

All (20) bond angle outliers are listed below:

Mol	Chain	Res	Type	Atoms	Z	Observed(°)	Ideal(°)
1	B	360	MET	CG-SD-CE	8.40	119.39	100.90
1	A	231	ASP	CA-CB-CG	8.03	120.63	112.60
1	A	275	GLN	N-CA-CB	-7.38	98.85	110.28
1	B	372	ASP	CA-CB-CG	-6.29	106.31	112.60
1	B	254	ASP	CA-CB-CG	6.23	118.83	112.60
1	B	264	LYS	N-CA-CB	-5.96	101.70	111.66
1	A	454	GLN	CB-CA-C	-5.80	97.91	109.33
1	B	152	LYS	CB-CA-C	5.78	119.31	109.53
1	A	480	ASP	CA-CB-CG	5.63	118.23	112.60
1	B	266	PHE	CA-CB-CG	5.45	119.25	113.80
1	A	274	PHE	CA-CB-CG	5.42	119.22	113.80
1	A	245	LYS	N-CA-CB	5.38	118.22	110.20
1	B	484	LYS	CB-CA-C	-5.25	102.81	110.95
1	B	162	ASP	CA-CB-CG	5.25	117.85	112.60
1	A	253	GLN	CB-CA-C	-5.23	100.69	109.48
1	A	234	HIS	CB-CG-CD2	5.16	137.91	131.20
1	A	348	ASP	CA-CB-CG	5.10	117.70	112.60
1	B	135	ILE	CB-CA-C	-5.09	103.09	110.63
1	B	484	LYS	N-CA-CB	5.09	117.36	109.98
1	B	348	ASP	CA-CB-CG	5.00	117.60	112.60

There are no chirality outliers.

There are no planarity outliers.

## 5.2 Too-close contacts

In the following table, the Non-H and H(model) columns list the number of non-hydrogen atoms and hydrogen atoms in the chain respectively. The H(added) column lists the number of hydrogen atoms added and optimized by MolProbity. The Clashes column lists the number of clashes within the asymmetric unit, whereas Symm-Clashes lists symmetry-related clashes.

Mol	Chain	Non-H	H(model)	H(added)	Clashes	Symm-Clashes
1	A	3245	0	3296	21	0
1	B	3285	0	3334	26	0
2	A	1	0	0	0	0
2	B	1	0	0	0	0
3	A	28	0	0	0	0
3	B	28	0	0	0	0
4	A	6	0	8	0	0
4	B	6	0	8	0	0
5	B	3	0	0	0	0
6	A	208	0	0	8	0
6	B	228	0	0	6	0
All	All	7039	0	6646	47	0

The all-atom clashscore is defined as the number of clashes found per 1000 atoms (including hydrogen atoms). The all-atom clashscore for this structure is 4.

All (47) close contacts within the same asymmetric unit are listed below, sorted by their clash magnitude.

Atom-1	Atom-2	Interatomic distance (Å)	Clash overlap (Å)
1:A:328:ASN:HB3	6:A:760:HOH:O	1.30	1.25
1:A:275:GLN:HB2	6:A:673:HOH:O	1.77	0.82
1:A:165:MET:HG2	6:A:729:HOH:O	1.79	0.81
1:B:204:ASN:ND2	1:B:207:SER:OG	2.23	0.71
1:B:372:ASP:CG	6:B:603:HOH:O	2.38	0.67
1:A:165:MET:CG	6:A:729:HOH:O	2.37	0.67
1:A:355:MET:HE1	1:A:383:LEU:HD21	1.78	0.64
1:B:239:GLN:NE2	6:B:602:HOH:O	2.32	0.62
1:A:481:ILE:O	1:A:484:LYS:HG3	2.01	0.61
1:B:372:ASP:CB	6:B:603:HOH:O	2.50	0.59
1:B:274:PHE:CE2	1:B:285:VAL:HG21	2.38	0.58
1:A:360:MET:HG3	6:A:777:HOH:O	2.04	0.58
1:B:166:LYS:HE3	1:B:192:TYR:OH	2.04	0.58

*Continued on next page...*



*Continued from previous page...*

Atom-1	Atom-2	Interatomic distance (Å)	Clash overlap (Å)
1:B:372:ASP:HB3	6:B:603:HOH:O	2.05	0.56
1:B:135:ILE:HG12	1:B:144:LEU:HD22	1.87	0.55
1:B:135:ILE:HD11	1:B:141:TYR:HA	1.90	0.54
1:A:84:GLY:HA3	1:A:181:ILE:HG23	1.91	0.52
1:B:84:GLY:HA3	1:B:181:ILE:CG2	2.41	0.51
1:B:135:ILE:CD1	1:B:141:TYR:HA	2.42	0.49
1:B:84:GLY:HA3	1:B:181:ILE:HG23	1.94	0.49
1:B:123:GLU:OE1	1:B:126:ARG:NH1	2.45	0.49
1:B:84:GLY:CA	1:B:181:ILE:CG2	2.92	0.48
1:B:135:ILE:HG12	1:B:144:LEU:CD2	2.43	0.48
1:B:279:MET:HE3	1:B:397:GLU:CD	2.39	0.47
1:B:114:VAL:HG22	1:B:121:LEU:HD22	1.97	0.47
1:A:362:ILE:HG22	6:A:603:HOH:O	2.16	0.46
1:A:403:LYS:HE3	1:A:407:GLN:NE2	2.30	0.45
1:A:242:ASP:HB3	1:A:244:ASN:OD1	2.17	0.45
1:A:146:GLU:HA	1:A:149:LYS:HE2	2.00	0.44
1:A:226:LYS:HE3	6:A:792:HOH:O	2.18	0.44
1:B:236:ALA:N	6:B:602:HOH:O	2.51	0.43
1:B:76:LYS:HB3	1:B:77:PRO:HD3	2.01	0.43
1:A:257:SER:OG	1:A:325:VAL:HG22	2.19	0.43
1:A:393:LYS:HE2	6:A:786:HOH:O	2.17	0.43
1:B:292:LYS:O	1:B:293:HIS:C	2.62	0.43
1:B:227:ILE:HD12	1:B:252:LEU:HD13	2.00	0.42
1:B:227:ILE:HD12	1:B:252:LEU:CD1	2.49	0.42
1:B:254:ASP:O	1:B:255:ASN:HB2	2.21	0.41
1:A:280:ASP:OD1	1:A:283:LYS:NZ	2.54	0.41
1:A:254:ASP:O	1:A:255:ASN:HB2	2.20	0.41
1:B:362:ILE:HG22	6:B:659:HOH:O	2.21	0.41
1:B:485:HIS:O	1:B:485:HIS:CG	2.74	0.41
1:B:331:GLU:OE2	1:B:393:LYS:HE2	2.21	0.41
1:A:484:LYS:HD2	1:A:485:HIS:N	2.37	0.40
1:A:430:PHE:CG	1:A:440:ILE:HD11	2.57	0.40
1:A:146:GLU:HA	1:A:149:LYS:CE	2.52	0.40
1:A:202:LEU:HD11	1:A:204:ASN:HB3	2.03	0.40

There are no symmetry-related clashes.

## 5.3 Torsion angles

### 5.3.1 Protein backbone

In the following table, the Percentiles column shows the percent Ramachandran outliers of the chain as a percentile score with respect to all X-ray entries followed by that with respect to entries of similar resolution.

The Analysed column shows the number of residues for which the backbone conformation was analysed, and the total number of residues.

Mol	Chain	Analysed	Favoured	Allowed	Outliers	Percentiles	
1	A	403/488 (83%)	393 (98%)	9 (2%)	1 (0%)	44	22
1	B	409/488 (84%)	395 (97%)	13 (3%)	1 (0%)	44	22
All	All	812/976 (83%)	788 (97%)	22 (3%)	2 (0%)	44	22

All (2) Ramachandran outliers are listed below:

Mol	Chain	Res	Type
1	A	342	SER
1	B	342	SER

### 5.3.2 Protein sidechains

In the following table, the Percentiles column shows the percent sidechain outliers of the chain as a percentile score with respect to all X-ray entries followed by that with respect to entries of similar resolution.

The Analysed column shows the number of residues for which the sidechain conformation was analysed, and the total number of residues.

Mol	Chain	Analysed	Rotameric	Outliers	Percentiles	
1	A	374/449 (83%)	369 (99%)	5 (1%)	65	39
1	B	378/449 (84%)	370 (98%)	8 (2%)	48	19
All	All	752/898 (84%)	739 (98%)	13 (2%)	56	27

All (13) residues with a non-rotameric sidechain are listed below:

Mol	Chain	Res	Type
1	A	114	VAL
1	A	181	ILE
1	A	275	GLN
1	A	312	LYS

*Continued on next page...*

*Continued from previous page...*

Mol	Chain	Res	Type
1	A	355	MET
1	B	135	ILE
1	B	163	GLU
1	B	182	ASP
1	B	292	LYS
1	B	333	ILE
1	B	372	ASP
1	B	387	SER
1	B	460	SER

Sometimes sidechains can be flipped to improve hydrogen bonding and reduce clashes. All (24) such sidechains are listed below:

Mol	Chain	Res	Type
1	A	136	HIS
1	A	185	GLN
1	A	197	ASN
1	A	220	ASN
1	A	224	ASN
1	A	253	GLN
1	A	260	ASN
1	A	261	ASN
1	A	328	ASN
1	A	377	ASN
1	A	407	GLN
1	A	428	ASN
1	A	483	ASN
1	B	105	ASN
1	B	136	HIS
1	B	185	GLN
1	B	197	ASN
1	B	204	ASN
1	B	255	ASN
1	B	260	ASN
1	B	293	HIS
1	B	328	ASN
1	B	428	ASN
1	B	459	ASN

### 5.3.3 RNA ⓘ

There are no RNA molecules in this entry.

## 5.4 Non-standard residues in protein, DNA, RNA chains [i](#)

There are no non-standard protein/DNA/RNA residues in this entry.

## 5.5 Carbohydrates [i](#)

There are no oligosaccharides in this entry.

## 5.6 Ligand geometry [i](#)

Of 9 ligands modelled in this entry, 5 are monoatomic - leaving 4 for Mogul analysis.

In the following table, the Counts columns list the number of bonds (or angles) for which Mogul statistics could be retrieved, the number of bonds (or angles) that are observed in the model and the number of bonds (or angles) that are defined in the Chemical Component Dictionary. The Link column lists molecule types, if any, to which the group is linked. The Z score for a bond length (or angle) is the number of standard deviations the observed value is removed from the expected value. A bond length (or angle) with  $|Z| > 2$  is considered an outlier worth inspection. RMSZ is the root-mean-square of all Z scores of the bond lengths (or angles).

Mol	Type	Chain	Res	Link	Bond lengths			Bond angles		
					Counts	RMSZ	$\# Z  > 2$	Counts	RMSZ	$\# Z  > 2$
4	GOL	B	506	-	5,5,5	0.14	0	5,5,5	0.56	0
4	GOL	A	503	-	5,5,5	0.18	0	5,5,5	0.54	0
3	A1L43	A	502	2	28,29,29	1.40	3 (10%)	29,38,38	1.15	1 (3%)
3	A1L43	B	502	2	28,29,29	2.33	3 (10%)	29,38,38	1.25	3 (10%)

In the following table, the Chirals column lists the number of chiral outliers, the number of chiral centers analysed, the number of these observed in the model and the number defined in the Chemical Component Dictionary. Similar counts are reported in the Torsion and Rings columns. '-' means no outliers of that kind were identified.

Mol	Type	Chain	Res	Link	Chirals	Torsions	Rings
4	GOL	B	506	-	-	1/4/4/4	-
4	GOL	A	503	-	-	2/4/4/4	-
3	A1L43	A	502	2	-	7/27/27/27	0/2/2/2
3	A1L43	B	502	2	-	7/27/27/27	0/2/2/2

All (6) bond length outliers are listed below:

Mol	Chain	Res	Type	Atoms	Z	Observed(Å)	Ideal(Å)
3	B	502	A1L43	O1-N1	10.87	1.48	1.40

*Continued on next page...*

*Continued from previous page...*

Mol	Chain	Res	Type	Atoms	Z	Observed(Å)	Ideal(Å)
3	A	502	A1L43	O1-N1	4.66	1.43	1.40
3	B	502	A1L43	C9-C10	2.68	1.57	1.51
3	A	502	A1L43	C10-N1	-2.55	1.31	1.34
3	B	502	A1L43	P1-O5	-2.42	1.51	1.54
3	A	502	A1L43	C2-C1	2.27	1.42	1.39

All (4) bond angle outliers are listed below:

Mol	Chain	Res	Type	Atoms	Z	Observed(°)	Ideal(°)
3	B	502	A1L43	O1-N1-C11	3.96	123.48	113.59
3	A	502	A1L43	O4-P1-O3	-2.93	106.09	113.45
3	B	502	A1L43	P1-C7-C1	2.49	116.37	110.26
3	B	502	A1L43	C12-C11-N1	2.44	116.13	111.06

There are no chirality outliers.

All (17) torsion outliers are listed below:

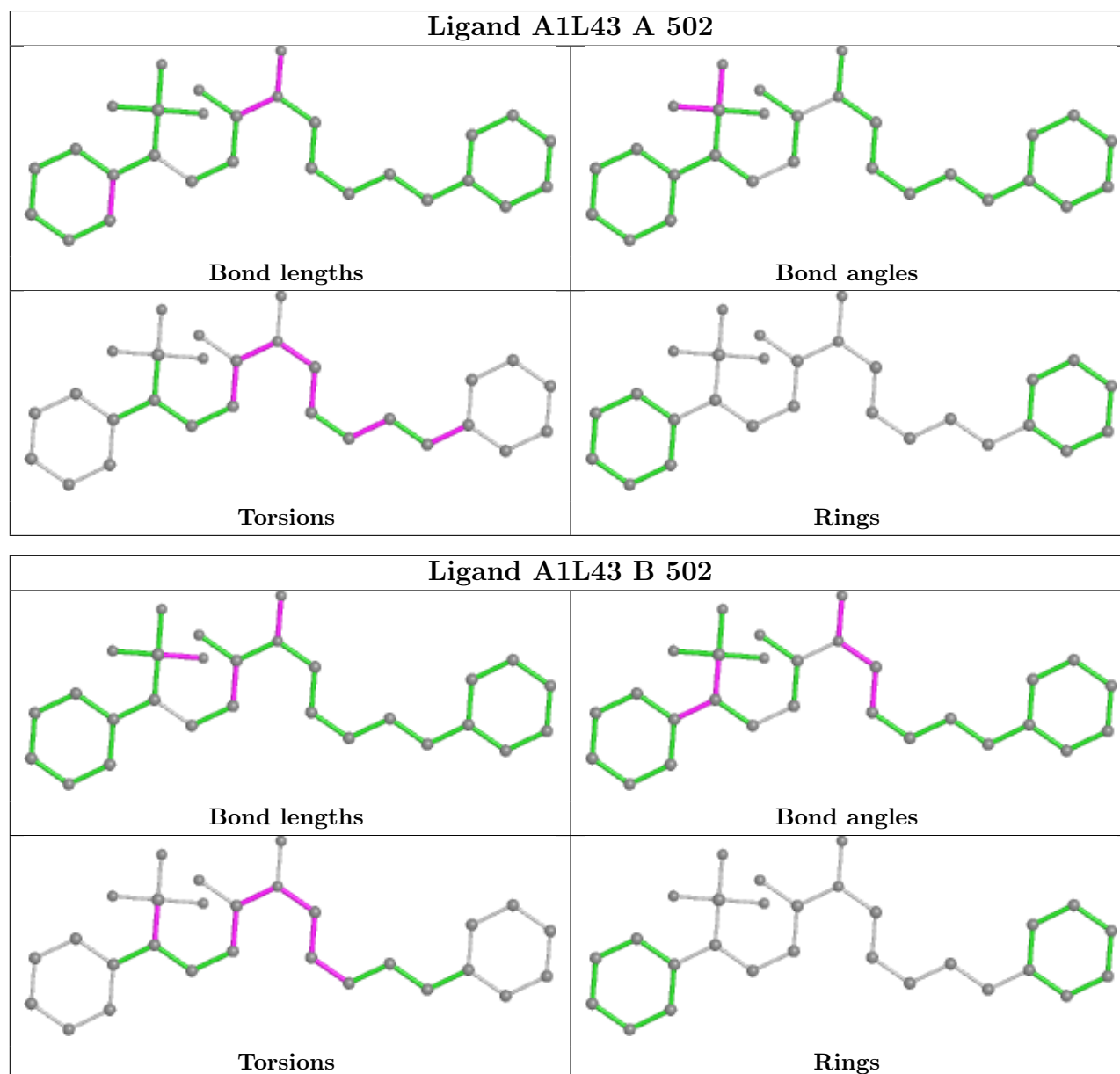
Mol	Chain	Res	Type	Atoms
3	A	502	A1L43	N1-C11-C12-C13
3	B	502	A1L43	C12-C11-N1-C10
3	B	502	A1L43	C12-C11-N1-O1
3	B	502	A1L43	N1-C11-C12-C13
3	A	502	A1L43	C12-C13-C14-C16
4	B	506	GOL	O2-C2-C3-O3
4	A	503	GOL	O2-C2-C3-O3
3	B	502	A1L43	C8-C7-P1-O3
3	A	502	A1L43	C17-C15-C16-C14
3	A	502	A1L43	C21-C15-C16-C14
3	A	502	A1L43	C12-C11-N1-C10
3	B	502	A1L43	C11-C12-C13-C14
3	A	502	A1L43	O2-C10-N1-O1
3	A	502	A1L43	N1-C10-C9-C8
3	B	502	A1L43	O2-C10-N1-O1
3	B	502	A1L43	N1-C10-C9-C8
4	A	503	GOL	C1-C2-C3-O3

There are no ring outliers.

No monomer is involved in short contacts.

The following is a two-dimensional graphical depiction of Mogul quality analysis of bond lengths, bond angles, torsion angles, and ring geometry for all instances of the Ligand of Interest. In addition, ligands with molecular weight > 250 and outliers as shown on the validation Tables will

also be included. For torsion angles, if less than 5% of the Mogul distribution of torsion angles is within 10 degrees of the torsion angle in question, then that torsion angle is considered an outlier. Any bond that is central to one or more torsion angles identified as an outlier by Mogul will be highlighted in the graph. For rings, the root-mean-square deviation (RMSD) between the ring in question and similar rings identified by Mogul is calculated over all ring torsion angles. If the average RMSD is greater than 60 degrees and the minimal RMSD between the ring in question and any Mogul-identified rings is also greater than 60 degrees, then that ring is considered an outlier. The outliers are highlighted in purple. The color gray indicates Mogul did not find sufficient equivalents in the CSD to analyse the geometry.



## 5.7 Other polymers ⓘ

There are no such residues in this entry.

## 5.8 Polymer linkage issues ⓘ

There are no chain breaks in this entry.

## 6 Fit of model and data

### 6.1 Protein, DNA and RNA chains

In the following table, the column labelled ‘#RSRZ> 2’ contains the number (and percentage) of RSRZ outliers, followed by percent RSRZ outliers for the chain as percentile scores relative to all X-ray entries and entries of similar resolution. The OWAB column contains the minimum, median, 95<sup>th</sup> percentile and maximum values of the occupancy-weighted average B-factor per residue. The column labelled ‘Q< 0.9’ lists the number of (and percentage) of residues with an average occupancy less than 0.9.

Mol	Chain	Analysed	<RSRZ>	#RSRZ>2	OWAB(Å <sup>2</sup> )	Q<0.9
1	A	407/488 (83%)	0.61	59 (14%) <b>7</b> <b>6</b>	10, 20, 52, 75	0
1	B	411/488 (84%)	0.43	27 (6%) <b>26</b> <b>27</b>	11, 19, 39, 69	0
All	All	818/976 (83%)	0.52	86 (10%) <b>13</b> <b>12</b>	10, 20, 47, 75	0

All (86) RSRZ outliers are listed below:

Mol	Chain	Res	Type	RSRZ
1	A	184	PHE	5.8
1	A	151	ILE	4.7
1	B	294	PRO	4.4
1	A	147	LEU	4.3
1	A	188	TYR	4.2
1	B	293	HIS	4.1
1	A	76	LYS	4.1
1	B	296	TRP	4.0
1	B	485	HIS	4.0
1	B	213	PHE	3.9
1	B	295	LYS	3.7
1	B	135	ILE	3.7
1	A	154	TYR	3.6
1	B	486	ASN	3.6
1	A	83	PHE	3.6
1	A	148	VAL	3.5
1	B	484	LYS	3.5
1	A	118	VAL	3.5
1	A	122	TYR	3.5
1	B	76	LYS	3.4
1	A	155	LYS	3.4
1	A	138	LYS	3.4
1	A	77	PRO	3.3
1	A	141	TYR	3.3

*Continued on next page...*



*Continued from previous page...*

Mol	Chain	Res	Type	RSRZ
1	B	460	SER	3.2
1	A	128	PHE	3.2
1	A	185	GLN	3.1
1	B	152	LYS	3.1
1	A	106	VAL	3.1
1	A	292	LYS	3.0
1	A	181	ILE	3.0
1	A	455	LYS	3.0
1	A	192	TYR	2.9
1	A	203	ALA	2.9
1	A	140	VAL	2.9
1	A	126	ARG	2.9
1	B	118	VAL	2.8
1	A	152	LYS	2.8
1	A	119	ASN	2.8
1	A	129	LEU	2.8
1	B	147	LEU	2.8
1	A	485	HIS	2.7
1	A	458	GLU	2.7
1	B	184	PHE	2.7
1	A	144	LEU	2.7
1	A	484	LYS	2.6
1	A	183	SER	2.6
1	A	291	LEU	2.6
1	A	160	CYS	2.6
1	A	149	LYS	2.6
1	A	135	ILE	2.6
1	A	156	PRO	2.5
1	A	165	MET	2.5
1	A	252	LEU	2.5
1	A	158	ILE	2.4
1	A	113	TYR	2.4
1	A	173	SER	2.4
1	B	292	LYS	2.4
1	A	133	LEU	2.4
1	A	153	ASP	2.3
1	B	153	ASP	2.3
1	A	145	LYS	2.3
1	B	151	ILE	2.3
1	A	109	VAL	2.3
1	A	115	ASN	2.3
1	B	291	LEU	2.3

*Continued on next page...*

*Continued from previous page...*

Mol	Chain	Res	Type	RSRZ
1	B	105	ASN	2.2
1	A	114	VAL	2.2
1	A	328	ASN	2.2
1	A	150	ASN	2.2
1	B	148	VAL	2.2
1	B	122	TYR	2.2
1	B	146	GLU	2.1
1	A	182	ASP	2.1
1	A	157	ILE	2.1
1	A	79	ASN	2.1
1	A	456	VAL	2.1
1	A	121	LEU	2.1
1	A	159	LEU	2.1
1	A	204	ASN	2.0
1	B	150	ASN	2.0
1	B	141	TYR	2.0
1	B	188	TYR	2.0
1	B	182	ASP	2.0
1	A	136	HIS	2.0
1	A	146	GLU	2.0

## 6.2 Non-standard residues in protein, DNA, RNA chains [i](#)

There are no non-standard protein/DNA/RNA residues in this entry.

## 6.3 Carbohydrates [i](#)

There are no oligosaccharides in this entry.

## 6.4 Ligands [i](#)

In the following table, the Atoms column lists the number of modelled atoms in the group and the number defined in the chemical component dictionary. The B-factors column lists the minimum, median, 95<sup>th</sup> percentile and maximum values of B factors of atoms in the group. The column labelled 'Q< 0.9' lists the number of atoms with occupancy less than 0.9.

Mol	Type	Chain	Res	Atoms	RSCC	RSR	B-factors(Å <sup>2</sup> )	Q<0.9
4	GOL	A	503	6/6	0.95	0.08	19,22,23,23	0
4	GOL	B	506	6/6	0.95	0.08	19,20,24,28	0
5	CA	B	504	1/1	0.96	0.11	25,25,25,25	0

*Continued on next page...*

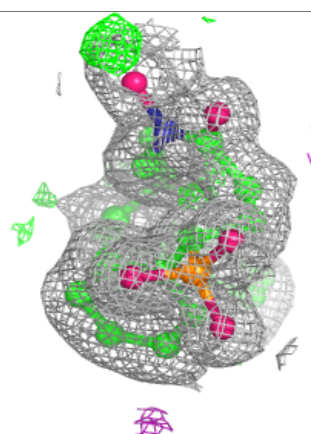
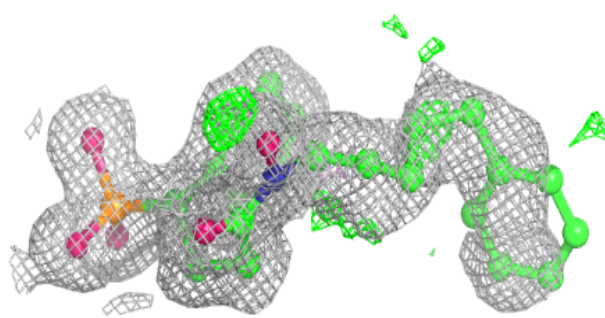
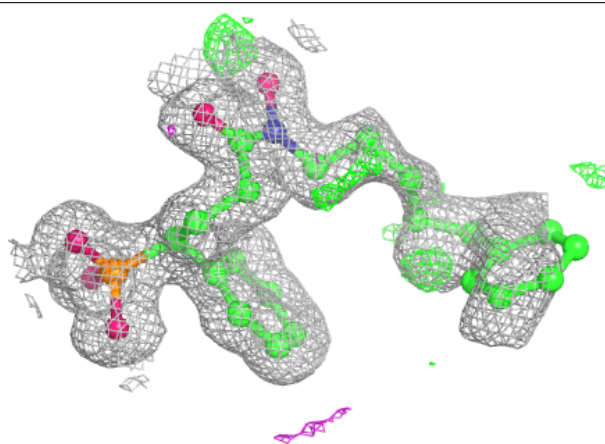
*Continued from previous page...*

Mol	Type	Chain	Res	Atoms	RSCC	RSR	B-factors( $\text{\AA}^2$ )	Q<0.9
5	CA	B	505	1/1	0.96	0.10	29,29,29,29	0
3	A1L43	A	502	28/28	0.97	0.11	12,18,54,58	0
3	A1L43	B	502	28/28	0.98	0.08	10,15,36,38	0
5	CA	B	503	1/1	0.99	0.04	13,13,13,13	0
2	MN	B	501	1/1	1.00	0.01	11,11,11,11	0
2	MN	A	501	1/1	1.00	0.01	12,12,12,12	0

The following is a graphical depiction of the model fit to experimental electron density of all instances of the Ligand of Interest. In addition, ligands with molecular weight > 250 and outliers as shown on the geometry validation Tables will also be included. Each fit is shown from different orientation to approximate a three-dimensional view.

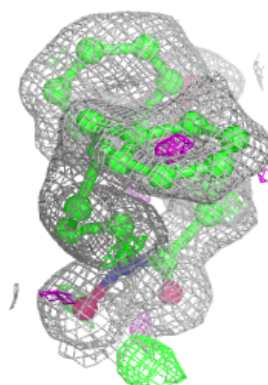
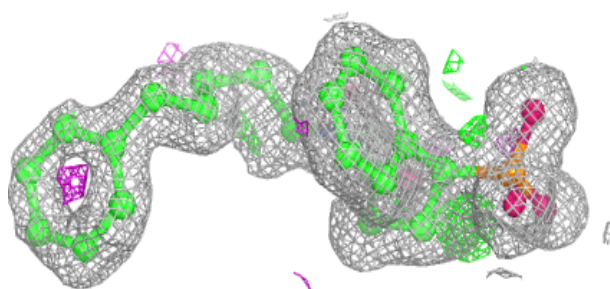
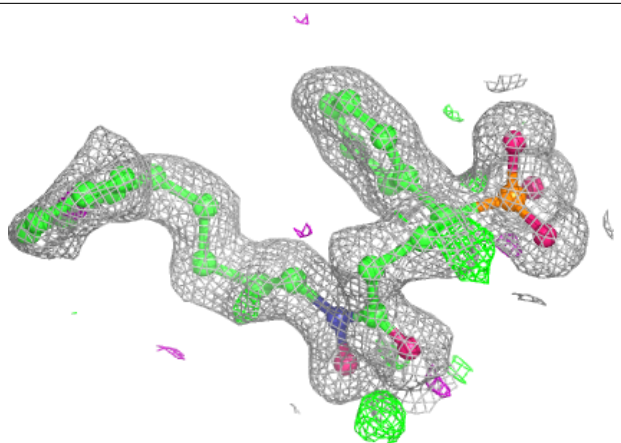
**Electron density around A1L43 A 502:**

2mF<sub>o</sub>-DF<sub>c</sub> (at 0.7 rmsd) in gray  
mF<sub>o</sub>-DF<sub>c</sub> (at 3 rmsd) in purple (negative)  
and green (positive)



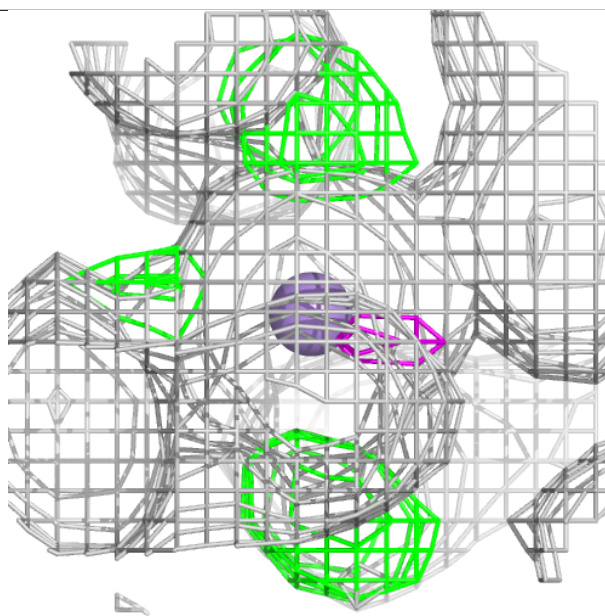
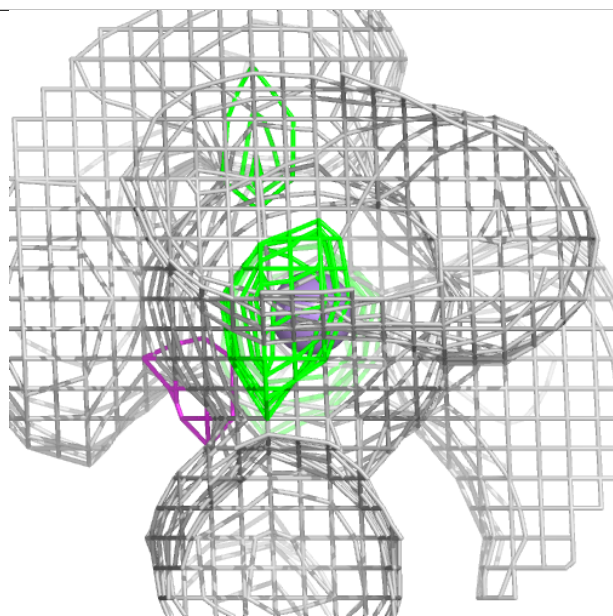
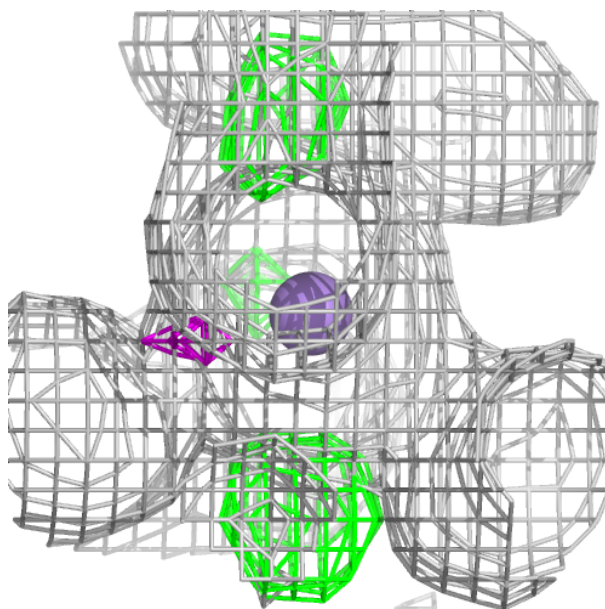
**Electron density around A1L43 B 502:**

$2mF_o-DF_c$  (at 0.7 rmsd) in gray  
 $mF_o-DF_c$  (at 3 rmsd) in purple (negative)  
and green (positive)



**Electron density around MN B 501:**

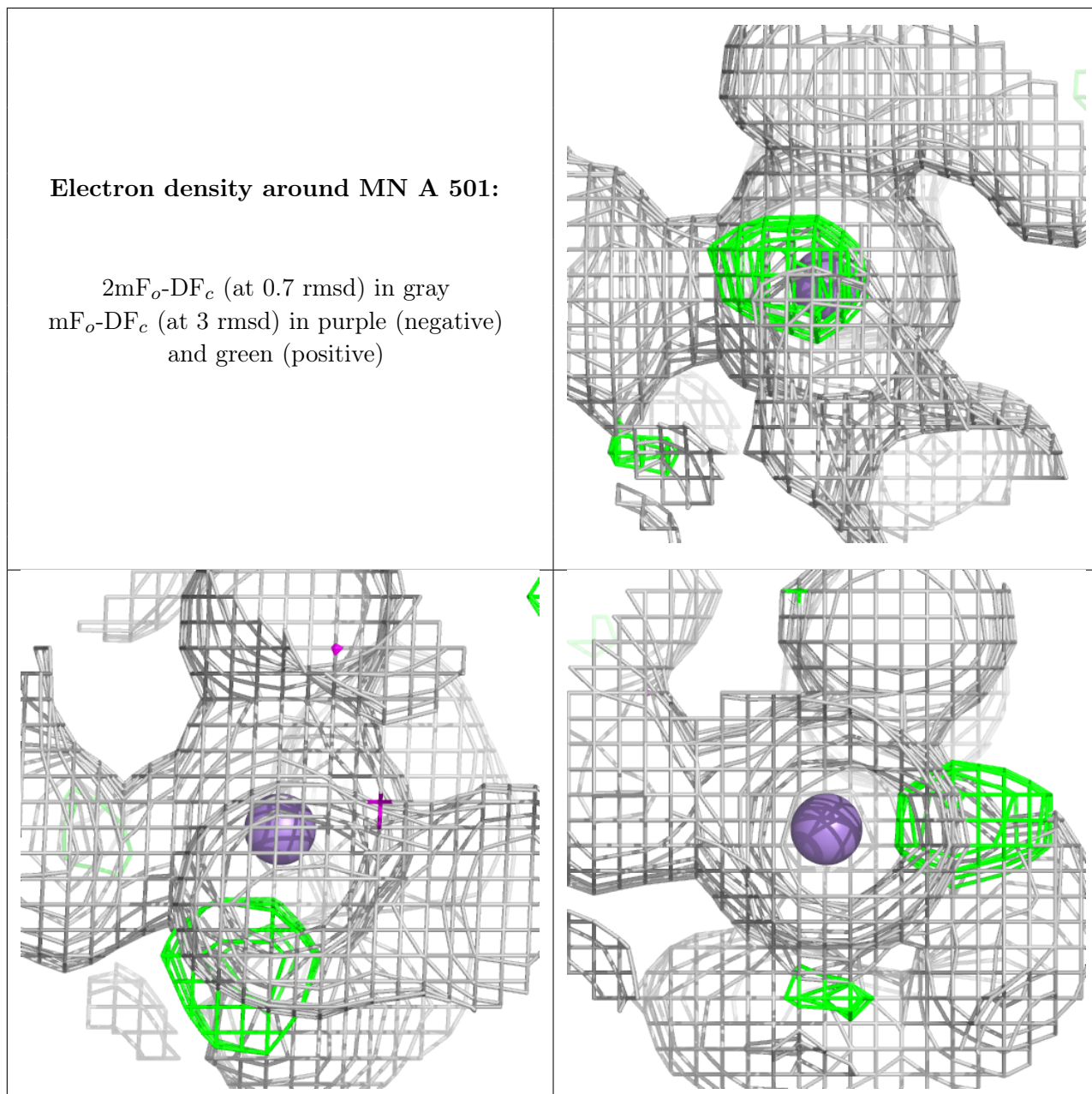
$2mF_o-DF_c$  (at 0.7 rmsd) in gray  
 $mF_o-DF_c$  (at 3 rmsd) in purple (negative)  
and green (positive)





**Electron density around MN A 501:**

$2mF_o-DF_c$  (at 0.7 rmsd) in gray  
 $mF_o-DF_c$  (at 3 rmsd) in purple (negative)  
and green (positive)

**6.5 Other polymers** ⓘ

There are no such residues in this entry.