



Full wwPDB X-ray Structure Validation Report ⓘ

Oct 14, 2025 – 06:14 PM JST

PDB ID : 9K2Y / pdb_00009k2y
Title : Human IgG1 Fc fragments, mutant (2CT1.1)
Authors : Kim, J.-S.; Kim, J.-W.
Deposited on : 2024-10-18
Resolution : 3.12 Å(reported)

This is a Full wwPDB X-ray Structure Validation Report for a publicly released PDB entry.

We welcome your comments at validation@mail.wwpdb.org

A user guide is available at

<https://www.wwpdb.org/validation/2017/XrayValidationReportHelp>

with specific help available everywhere you see the ⓘ symbol.

The types of validation reports are described at

<http://www.wwpdb.org/validation/2017/FAQs#types>.

The following versions of software and data (see [references ⓘ](#)) were used in the production of this report:

MolProbity : 4-5-2 with Phenix2.0
Mogul : 1.8.5 (274361), CSD as541be (2020)
Xtriage (Phenix) : 2.0
EDS : 3.0
Percentile statistics : 20231227.v01 (using entries in the PDB archive December 27th 2023)
CCP4 : 9.0.010 (Gargrove)
Density-Fitness : 1.0.12
Ideal geometry (proteins) : Engh & Huber (2001)
Ideal geometry (DNA, RNA) : Parkinson et al. (1996)
Validation Pipeline (wwPDB-VP) : 2.46

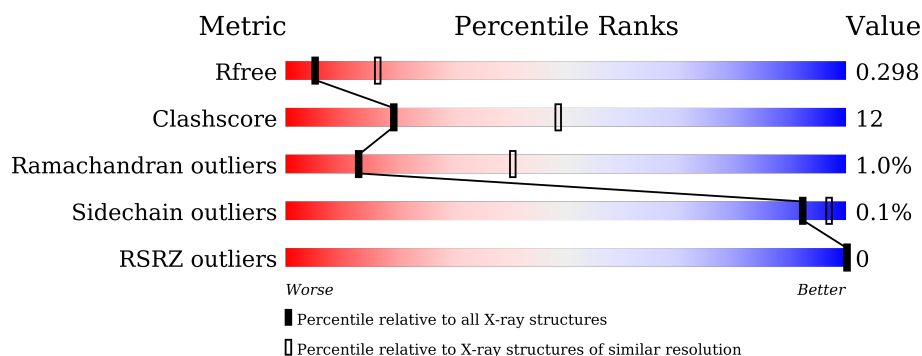
1 Overall quality at a glance ⓘ

The following experimental techniques were used to determine the structure:

X-RAY DIFFRACTION

The reported resolution of this entry is 3.12 Å.

Percentile scores (ranging between 0-100) for global validation metrics of the entry are shown in the following graphic. The table shows the number of entries on which the scores are based.




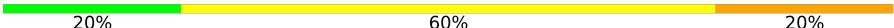
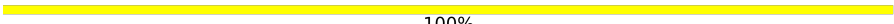
Metric	Whole archive (#Entries)	Similar resolution (#Entries, resolution range(Å))
R_{free}	164625	1668 (3.14-3.10)
Clashscore	180529	1788 (3.14-3.10)
Ramachandran outliers	177936	1696 (3.14-3.10)
Sidechain outliers	177891	1696 (3.14-3.10)
RSRZ outliers	164620	1668 (3.14-3.10)

The table below summarises the geometric issues observed across the polymeric chains and their fit to the electron density. The red, orange, yellow and green segments of the lower bar indicate the fraction of residues that contain outliers for ≥ 3 , 2, 1 and 0 types of geometric quality criteria respectively. A grey segment represents the fraction of residues that are not modelled. The numeric value for each fraction is indicated below the corresponding segment, with a dot representing fractions $\leq 5\%$. The upper red bar (where present) indicates the fraction of residues that have poor fit to the electron density. The numeric value is given above the bar.

Mol	Chain	Length	Quality of chain
1	A	223	<div> <div>64%</div> <div>29%</div> <div>8%</div> </div>
1	B	223	<div> <div>70%</div> <div>22%</div> <div>8%</div> </div>
1	C	223	<div> <div>62%</div> <div>30%</div> <div>8%</div> </div>
1	D	223	<div> <div>71%</div> <div>21%</div> <div>8%</div> </div>
2	F	10	<div> <div>20%</div> <div>60%</div> <div>20%</div> </div>
2	G	10	<div> <div>20%</div> <div>60%</div> <div>20%</div> </div>

Continued on next page...

Continued from previous page...

Mol	Chain	Length	Quality of chain
3	E	8	 88%12%
4	H	5	 20%60%20%
5	I	2	 100%

2 Entry composition

There are 6 unique types of molecules in this entry. The entry contains 7106 atoms, of which 0 are hydrogens and 0 are deuteriums.

In the tables below, the ZeroOcc column contains the number of atoms modelled with zero occupancy, the AltConf column contains the number of residues with at least one atom in alternate conformation and the Trace column contains the number of residues modelled with at most 2 atoms.

- Molecule 1 is a protein called Immunoglobulin gamma-1 heavy chain.

Mol	Chain	Residues	Atoms					ZeroOcc	AltConf	Trace
1	C	206	Total 1666	C 1064	N 279	O 317	S 6	0	0	0
1	A	206	Total 1666	C 1064	N 279	O 317	S 6	0	0	0
1	B	206	Total 1666	C 1064	N 279	O 317	S 6	0	0	0
1	D	206	Total 1666	C 1064	N 279	O 317	S 6	0	0	0

There are 32 discrepancies between the modelled and reference sequences:

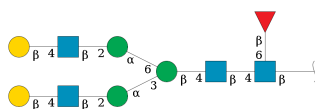
Chain	Residue	Modelled	Actual	Comment	Reference
C	136	TRP	ARG	conflict	UNP P0DOX5
C	139	ARG	LEU	conflict	UNP P0DOX5
C	142	GLU	ASN	conflict	UNP P0DOX5
C	143	GLU	GLN	conflict	UNP P0DOX5
C	194	GLU	ASP	conflict	UNP P0DOX5
C	195	ALA	LYS	conflict	UNP P0DOX5
C	199	TRP	GLN	conflict	UNP P0DOX5
C	224	ARG	LEU	conflict	UNP P0DOX5
A	136	TRP	ARG	conflict	UNP P0DOX5
A	139	ARG	LEU	conflict	UNP P0DOX5
A	142	GLU	ASN	conflict	UNP P0DOX5
A	143	GLU	GLN	conflict	UNP P0DOX5
A	194	GLU	ASP	conflict	UNP P0DOX5
A	195	ALA	LYS	conflict	UNP P0DOX5
A	199	TRP	GLN	conflict	UNP P0DOX5
A	224	ARG	LEU	conflict	UNP P0DOX5
B	136	TRP	ARG	conflict	UNP P0DOX5
B	139	ARG	LEU	conflict	UNP P0DOX5
B	142	GLU	ASN	conflict	UNP P0DOX5
B	143	GLU	GLN	conflict	UNP P0DOX5
B	194	GLU	ASP	conflict	UNP P0DOX5

Continued on next page...

Continued from previous page...

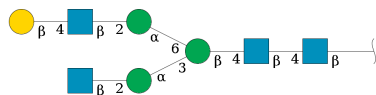
Chain	Residue	Modelled	Actual	Comment	Reference
B	195	ALA	LYS	conflict	UNP P0DOX5
B	199	TRP	GLN	conflict	UNP P0DOX5
B	224	ARG	LEU	conflict	UNP P0DOX5
D	136	TRP	ARG	conflict	UNP P0DOX5
D	139	ARG	LEU	conflict	UNP P0DOX5
D	142	GLU	ASN	conflict	UNP P0DOX5
D	143	GLU	GLN	conflict	UNP P0DOX5
D	194	GLU	ASP	conflict	UNP P0DOX5
D	195	ALA	LYS	conflict	UNP P0DOX5
D	199	TRP	GLN	conflict	UNP P0DOX5
D	224	ARG	LEU	conflict	UNP P0DOX5

- Molecule 2 is an oligosaccharide called beta-D-galactopyranose-(1-4)-2-acetamido-2-deoxy-beta-D-glucopyranose-(1-2)-alpha-D-mannopyranose-(1-3)-[beta-D-galactopyranose-(1-4)-2-acetamido-2-deoxy-beta-D-glucopyranose-(1-2)-alpha-D-mannopyranose-(1-6)]beta-D-mannopyranose-(1-4)-2-acetamido-2-deoxy-beta-D-glucopyranose-(1-4)-[beta-L-fucopyranose-(1-6)]2-acetamido-2-deoxy-beta-D-glucopyranose.



Mol	Chain	Residues	Atoms				ZeroOcc	AltConf	Trace
2	G	10	Total	C	N	O	0	0	0
			121	68	4	49			
2	F	10	Total	C	N	O	0	0	0
			121	68	4	49			

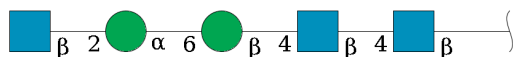
- Molecule 3 is an oligosaccharide called beta-D-galactopyranose-(1-4)-2-acetamido-2-deoxy-beta-D-glucopyranose-(1-2)-alpha-D-mannopyranose-(1-6)-[2-acetamido-2-deoxy-beta-D-glucopyranose-(1-2)-alpha-D-mannopyranose-(1-3)]beta-D-mannopyranose-(1-4)-2-acetamido-2-deoxy-beta-D-glucopyranose-(1-4)-2-acetamido-2-deoxy-beta-D-glucopyranose.



Mol	Chain	Residues	Atoms				ZeroOcc	AltConf	Trace
3	E	8	Total	C	N	O	0	0	0
			100	56	4	40			

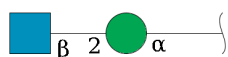
- Molecule 4 is an oligosaccharide called 2-acetamido-2-deoxy-beta-D-glucopyranose-(1-2)-alp

ha-D-mannopyranose-(1-6)-beta-D-mannopyranose-(1-4)-2-acetamido-2-deoxy-beta-D-glucopyranose-(1-4)-2-acetamido-2-deoxy-beta-D-glucopyranose.



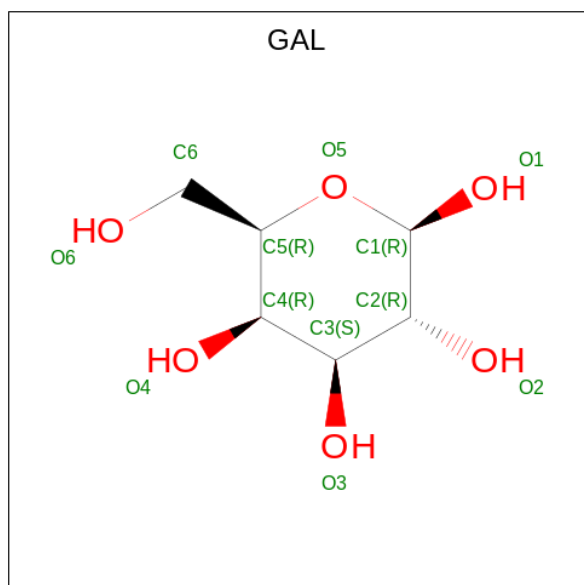
Mol	Chain	Residues	Atoms				ZeroOcc	AltConf	Trace
4	H	5	Total	C	N	O	0	0	0
			64	36	3	25			

- Molecule 5 is an oligosaccharide called 2-acetamido-2-deoxy-beta-D-glucopyranose-(1-2)-alpha-D-mannopyranose.



Mol	Chain	Residues	Atoms				ZeroOcc	AltConf	Trace
5	I	2	Total	C	N	O	0	0	0
			25	14	1	10			

- Molecule 6 is beta-D-galactopyranose (CCD ID: GAL) (formula: C₆H₁₂O₆).

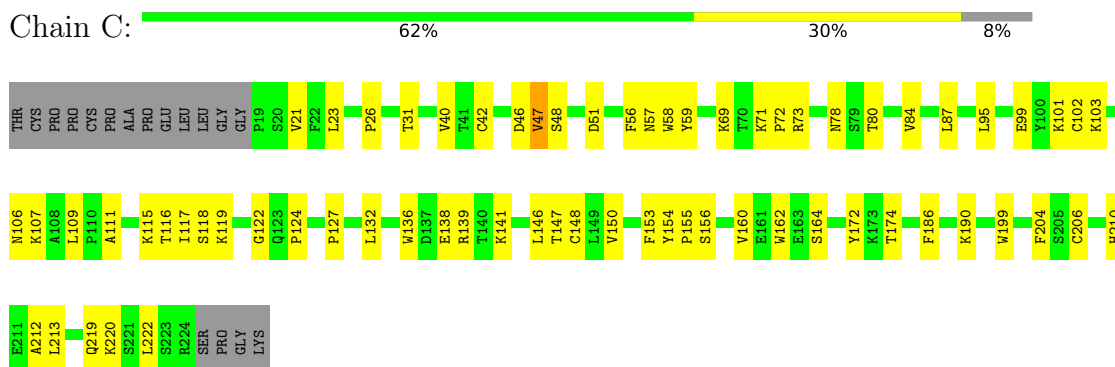


Mol	Chain	Residues	Atoms			ZeroOcc	AltConf
6	D	1	Total	C	O	0	0
			11	6	5		

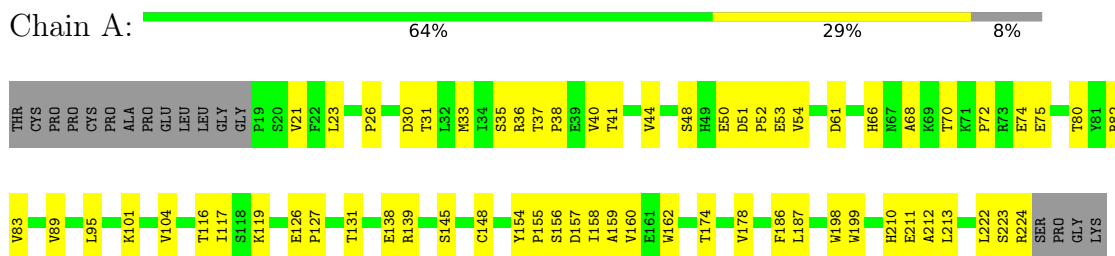
3 Residue-property plots [i](#)

These plots are drawn for all protein, RNA, DNA and oligosaccharide chains in the entry. The first graphic for a chain summarises the proportions of the various outlier classes displayed in the second graphic. The second graphic shows the sequence view annotated by issues in geometry and electron density. Residues are color-coded according to the number of geometric quality criteria for which they contain at least one outlier: green = 0, yellow = 1, orange = 2 and red = 3 or more. A red dot above a residue indicates a poor fit to the electron density ($RSRZ > 2$). Stretches of 2 or more consecutive residues without any outlier are shown as a green connector. Residues present in the sample, but not in the model, are shown in grey.

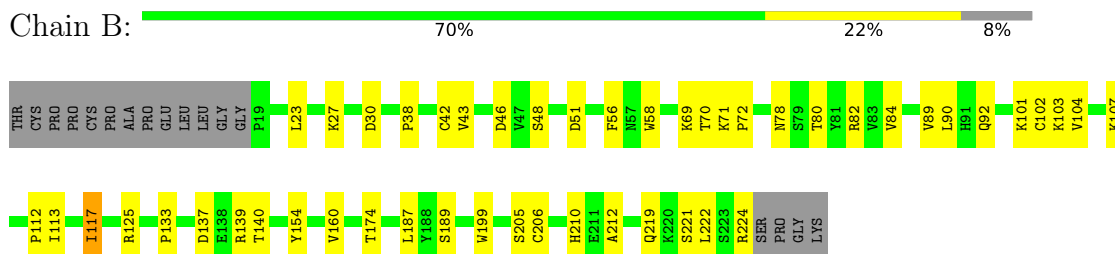
- Molecule 1: Immunoglobulin gamma-1 heavy chain



- Molecule 1: Immunoglobulin gamma-1 heavy chain



- Molecule 1: Immunoglobulin gamma-1 heavy chain



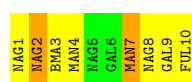
- Molecule 1: Immunoglobulin gamma-1 heavy chain





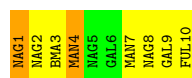
- Molecule 2: beta-D-galactopyranose-(1-4)-2-acetamido-2-deoxy-beta-D-glucopyranose-(1-2)-alpha-D-mannopyranose-(1-3)-[beta-D-galactopyranose-(1-4)-2-acetamido-2-deoxy-beta-D-glucopyranose-(1-2)-alpha-D-mannopyranose-(1-6)]beta-D-mannopyranose-(1-4)-2-acetamido-2-deoxy-beta-D-glucopyranose-(1-4)-[beta-L-fucopyranose-(1-6)]2-acetamido-2-deoxy-beta-D-glucopyranose

Chain G: 20% 60% 20%



- Molecule 2: beta-D-galactopyranose-(1-4)-2-acetamido-2-deoxy-beta-D-glucopyranose-(1-2)-alpha-D-mannopyranose-(1-3)-[beta-D-galactopyranose-(1-4)-2-acetamido-2-deoxy-beta-D-glucopyranose-(1-2)-alpha-D-mannopyranose-(1-6)]beta-D-mannopyranose-(1-4)-2-acetamido-2-deoxy-beta-D-glucopyranose-(1-4)-[beta-L-fucopyranose-(1-6)]2-acetamido-2-deoxy-beta-D-glucopyranose

Chain F: 20% 60% 20%



- Molecule 3: beta-D-galactopyranose-(1-4)-2-acetamido-2-deoxy-beta-D-glucopyranose-(1-2)-alpha-D-mannopyranose-(1-6)-[2-acetamido-2-deoxy-beta-D-glucopyranose-(1-2)-alpha-D-mannopyranose-(1-3)]beta-D-mannopyranose-(1-4)-2-acetamido-2-deoxy-beta-D-glucopyranose-(1-4)-2-acetamido-2-deoxy-beta-D-glucopyranose

Chain E: 88% 12%



- Molecule 4: 2-acetamido-2-deoxy-beta-D-glucopyranose-(1-2)-alpha-D-mannopyranose-(1-6)-beta-D-mannopyranose-(1-4)-2-acetamido-2-deoxy-beta-D-glucopyranose-(1-4)-2-acetamido-2-deoxy-beta-D-glucopyranose

Chain H: 20% 60% 20%



- Molecule 5: 2-acetamido-2-deoxy-beta-D-glucopyranose-(1-2)-alpha-D-mannopyranose

Chain I: 100%

MAN1
MAG2

4 Data and refinement statistics

Property	Value	Source
Space group	P 21 21 21	Depositor
Cell constants a, b, c, α , β , γ	62.95Å 123.33Å 150.03Å 90.00° 90.00° 90.00°	Depositor
Resolution (Å)	15.00 – 3.12 15.00 – 3.12	Depositor EDS
% Data completeness (in resolution range)	92.8 (15.00-3.12) 91.9 (15.00-3.12)	Depositor EDS
R_{merge}	0.17	Depositor
R_{sym}	(Not available)	Depositor
$\langle I/\sigma(I) \rangle$ ¹	1.46 (at 3.12Å)	Xtriage
Refinement program	PHENIX (1.19.2_4158: ???)	Depositor
R, R_{free}	0.236 , 0.281 0.259 , 0.298	Depositor DCC
R_{free} test set	988 reflections (5.00%)	wwPDB-VP
Wilson B-factor (Å ²)	59.3	Xtriage
Anisotropy	0.377	Xtriage
Bulk solvent k_{sol} (e/Å ³), B_{sol} (Å ²)	0.27 , 26.1	EDS
L-test for twinning ²	$\langle L \rangle = 0.39$, $\langle L^2 \rangle = 0.22$	Xtriage
Estimated twinning fraction	No twinning to report.	Xtriage
F_o, F_c correlation	0.87	EDS
Total number of atoms	7106	wwPDB-VP
Average B, all atoms (Å ²)	60.0	wwPDB-VP

Xtriage's analysis on translational NCS is as follows: *The largest off-origin peak in the Patterson function is 3.43% of the height of the origin peak. No significant pseudotranslation is detected.*

¹Intensities estimated from amplitudes.

²Theoretical values of $\langle |L| \rangle$, $\langle L^2 \rangle$ for acentric reflections are 0.5, 0.333 respectively for untwinned datasets, and 0.375, 0.2 for perfectly twinned datasets.

5 Model quality [i](#)

5.1 Standard geometry [i](#)

Bond lengths and bond angles in the following residue types are not validated in this section: NAG, GAL, FUL, BMA, MAN

The Z score for a bond length (or angle) is the number of standard deviations the observed value is removed from the expected value. A bond length (or angle) with $|Z| > 5$ is considered an outlier worth inspection. RMSZ is the root-mean-square of all Z scores of the bond lengths (or angles).

Mol	Chain	Bond lengths		Bond angles	
		RMSZ	$\# Z > 5$	RMSZ	$\# Z > 5$
1	A	0.31	0/1716	0.55	0/2340
1	B	0.33	0/1716	0.59	0/2340
1	C	0.36	0/1716	0.62	0/2340
1	D	0.30	0/1716	0.56	0/2340
All	All	0.33	0/6864	0.58	0/9360

There are no bond length outliers.

There are no bond angle outliers.

There are no chirality outliers.

There are no planarity outliers.

5.2 Too-close contacts [i](#)

In the following table, the Non-H and H(model) columns list the number of non-hydrogen atoms and hydrogen atoms in the chain respectively. The H(added) column lists the number of hydrogen atoms added and optimized by MolProbity. The Clashes column lists the number of clashes within the asymmetric unit, whereas Symm-Clashes lists symmetry-related clashes.

Mol	Chain	Non-H	H(model)	H(added)	Clashes	Symm-Clashes
1	A	1666	0	1619	38	1
1	B	1666	0	1619	38	1
1	C	1666	0	1619	52	0
1	D	1666	0	1619	32	0
2	F	121	0	103	5	0
2	G	121	0	103	3	0
3	E	100	0	85	1	0
4	H	64	0	55	1	0
5	I	25	0	22	0	0

Continued on next page...

Continued from previous page...

Mol	Chain	Non-H	H(model)	H(added)	Clashes	Symm-Clashes
6	D	11	0	10	0	0
All	All	7106	0	6854	161	1

The all-atom clashscore is defined as the number of clashes found per 1000 atoms (including hydrogen atoms). The all-atom clashscore for this structure is 12.

All (161) close contacts within the same asymmetric unit are listed below, sorted by their clash magnitude.

Atom-1	Atom-2	Interatomic distance (Å)	Clash overlap (Å)
2:F:4:MAN:H4	4:H:2:NAG:H83	1.51	0.90
1:B:56:PHE:O	1:B:69:LYS:NZ	2.05	0.90
1:D:41:THR:HG22	1:D:86:VAL:HG12	1.54	0.87
1:D:139:ARG:HD2	1:D:199:TRP:HH2	1.48	0.78
1:C:78:ASN:ND2	2:G:1:NAG:O7	2.17	0.78
1:A:101:LYS:HG2	1:A:116:THR:HG22	1.65	0.78
1:B:103:LYS:HA	1:B:113:ILE:HG12	1.65	0.78
1:D:59:TYR:HB3	1:D:64:GLU:HG2	1.67	0.75
1:C:58:TRP:CD1	1:C:69:LYS:HD2	2.28	0.69
1:A:41:THR:HG21	3:E:5:NAG:H61	1.74	0.68
1:C:51:ASP:HB3	1:C:107:LYS:HE3	1.77	0.65
1:A:160:VAL:HG21	1:A:187:LEU:HD11	1.77	0.65
1:D:155:PRO:HD2	1:D:210:HIS:CE1	2.31	0.65
1:D:27:LYS:NZ	1:D:36:ARG:HH21	1.94	0.65
1:B:78:ASN:HD21	2:F:1:NAG:HN2	1.42	0.64
1:A:50:GLU:OE1	1:A:51:ASP:N	2.31	0.64
1:A:54:VAL:HG21	1:A:83:VAL:HG11	1.79	0.64
1:D:33:MET:HG3	1:D:209:MET:HE1	1.80	0.63
1:C:69:LYS:HE3	1:C:71:LYS:NZ	2.13	0.63
1:C:146:LEU:HD23	1:C:222:LEU:HD23	1.81	0.63
1:A:48:SER:HB3	1:A:50:GLU:HG3	1.79	0.62
1:B:133:PRO:HA	1:B:222:LEU:HD21	1.81	0.62
1:C:72:PRO:HB2	1:C:84:VAL:HG13	1.81	0.61
1:C:210:HIS:CD2	1:C:212:ALA:H	2.18	0.61
1:A:23:LEU:HG	1:A:117:ILE:HD13	1.82	0.61
1:B:72:PRO:HD2	1:B:84:VAL:HG23	1.84	0.60
1:C:155:PRO:HD2	1:C:210:HIS:NE2	2.16	0.60
1:D:27:LYS:HZ2	1:D:36:ARG:HH21	1.50	0.60
1:D:154:TYR:HB3	1:D:155:PRO:HD3	1.84	0.60
1:B:38:PRO:O	1:B:89:VAL:HG22	2.01	0.60
1:A:80:THR:HG22	1:A:82:ARG:H	1.68	0.59
1:C:58:TRP:HD1	1:C:69:LYS:HD2	1.66	0.58

Continued on next page...

Continued from previous page...

Atom-1	Atom-2	Interatomic distance (Å)	Clash overlap (Å)
1:C:132:LEU:HB2	1:C:147:THR:OG1	2.02	0.58
1:B:90:LEU:HD22	1:B:92:GLN:H	1.68	0.58
1:A:33:MET:HE3	1:A:35:SER:HB2	1.86	0.58
1:C:47:VAL:HG23	1:C:48:SER:H	1.68	0.57
1:C:148:CYS:HB2	1:C:162:TRP:CZ2	2.38	0.57
1:A:158:ILE:HG12	1:A:159:ALA:H	1.70	0.57
1:B:125:ARG:HB2	1:B:154:TYR:HB2	1.87	0.57
1:D:169:GLU:OE2	1:D:197:ARG:NH2	2.36	0.57
1:B:160:VAL:HG11	1:B:187:LEU:HD11	1.87	0.57
1:B:27:LYS:H	1:B:27:LYS:HD2	1.70	0.56
1:C:71:LYS:HB3	1:C:73:ARG:HE	1.70	0.56
1:B:78:ASN:ND2	2:F:1:NAG:H3	2.20	0.56
1:C:58:TRP:HD1	1:C:69:LYS:CD	2.18	0.56
1:C:23:LEU:HD11	1:C:42:CYS:SG	2.46	0.56
1:B:43:VAL:HG22	1:B:84:VAL:HG12	1.88	0.55
1:B:206:CYS:O	1:B:219:GLN:HA	2.07	0.55
1:B:174:THR:HG22	1:B:189:SER:OG	2.06	0.55
1:A:26:PRO:HD3	1:A:40:VAL:HG12	1.88	0.55
1:C:127:PRO:HD2	1:C:213:LEU:HG	1.90	0.54
1:A:139:ARG:HD2	1:A:199:TRP:CH2	2.42	0.54
1:A:139:ARG:HD2	1:A:199:TRP:CZ2	2.42	0.54
1:A:38:PRO:HB2	1:A:89:VAL:HG22	1.90	0.54
1:B:224:ARG:HB2	1:B:224:ARG:NH1	2.23	0.54
1:B:51:ASP:CG	1:B:107:LYS:HB2	2.33	0.54
1:C:160:VAL:HG13	1:C:174:THR:HG21	1.90	0.54
1:D:40:VAL:HG23	1:D:87:LEU:HB3	1.91	0.53
1:C:58:TRP:CD1	1:C:69:LYS:CD	2.90	0.53
1:B:103:LYS:HA	1:B:113:ILE:CG1	2.37	0.52
1:B:137:ASP:HB2	1:D:130:TYR:CD1	2.45	0.52
1:B:23:LEU:HD13	1:B:117:ILE:HG12	1.92	0.52
1:C:132:LEU:HB2	1:C:147:THR:HG1	1.74	0.52
1:A:155:PRO:C	1:A:157:ASP:H	2.18	0.52
1:C:23:LEU:HD22	1:C:115:LYS:O	2.10	0.51
1:C:106:ASN:OD1	1:C:107:LYS:N	2.44	0.51
1:B:82:ARG:HH11	2:F:2:NAG:H82	1.76	0.51
1:C:59:TYR:CE1	1:C:103:LYS:HE3	2.45	0.51
1:C:109:LEU:HD13	1:C:111:ALA:C	2.36	0.51
1:A:74:GLU:HG2	1:A:75:GLU:N	2.25	0.51
1:B:102:CYS:O	1:B:113:ILE:HG12	2.10	0.51
1:D:155:PRO:HD2	1:D:210:HIS:HE1	1.75	0.51
1:C:57:ASN:HB2	1:C:103:LYS:HB3	1.92	0.51

Continued on next page...

Continued from previous page...

Atom-1	Atom-2	Interatomic distance (Å)	Clash overlap (Å)
1:A:50:GLU:CD	1:A:51:ASP:H	2.18	0.51
1:A:70:THR:O	1:A:72:PRO:HD3	2.11	0.51
1:A:126:GLU:HA	1:A:212:ALA:HB3	1.93	0.51
1:B:58:TRP:CZ3	1:B:102:CYS:HB2	2.46	0.51
1:D:23:LEU:HD12	1:D:41:THR:O	2.11	0.50
1:C:154:TYR:O	1:C:156:SER:N	2.45	0.49
1:A:66:HIS:HB2	1:A:68:ALA:HB2	1.94	0.49
1:D:30:ASP:O	1:D:38:PRO:HG3	2.13	0.49
1:C:46:ASP:OD1	2:G:1:NAG:H81	2.13	0.49
1:B:210:HIS:CD2	1:B:212:ALA:H	2.30	0.49
1:C:69:LYS:HE3	1:C:71:LYS:HZ3	1.77	0.49
1:C:101:LYS:HB2	1:C:116:THR:HG22	1.93	0.49
1:B:139:ARG:HG2	1:B:199:TRP:HZ2	1.77	0.48
1:A:52:PRO:O	1:A:54:VAL:HG13	2.14	0.48
1:C:122:GLY:O	1:C:124:PRO:HD3	2.13	0.48
1:B:42:CYS:HB2	1:B:58:TRP:CH2	2.49	0.48
1:B:69:LYS:HG2	1:B:70:THR:N	2.29	0.48
1:D:199:TRP:HE3	1:D:224:ARG:HD2	1.79	0.48
1:C:127:PRO:HG3	1:C:153:PHE:HB3	1.96	0.47
1:D:45:VAL:HG12	1:D:46:ASP:N	2.29	0.47
1:C:172:TYR:HA	1:C:190:LYS:O	2.14	0.47
1:A:178:VAL:HG13	1:A:186:PHE:CE1	2.49	0.47
1:A:154:TYR:HB3	1:A:155:PRO:HD3	1.97	0.47
1:C:210:HIS:HD2	1:C:212:ALA:H	1.60	0.47
1:B:48:SER:HB2	1:B:51:ASP:OD1	2.14	0.47
1:D:160:VAL:HG21	1:D:187:LEU:HD11	1.97	0.47
1:C:150:VAL:O	1:C:186:PHE:HA	2.15	0.46
1:A:198:TRP:CZ3	1:A:223:SER:HA	2.51	0.46
1:A:119:LYS:HD2	1:A:211:GLU:OE2	2.16	0.46
1:D:92:GLN:O	1:D:96:ASN:N	2.46	0.46
1:A:21:VAL:HG23	1:A:44:VAL:HG22	1.97	0.45
1:B:46:ASP:HA	1:B:80:THR:HB	1.99	0.45
1:C:21:VAL:HG23	1:C:115:LYS:HD3	1.98	0.45
1:C:139:ARG:HH11	1:C:199:TRP:HH2	1.63	0.45
1:A:138:GLU:OE2	1:A:145:SER:HB3	2.16	0.45
1:C:46:ASP:O	1:C:80:THR:HB	2.17	0.45
1:D:162:TRP:CE3	1:D:191:LEU:HD22	2.51	0.45
1:A:70:THR:HG23	1:A:72:PRO:HG3	1.99	0.45
1:D:164:SER:HB2	1:D:204:PHE:CD1	2.51	0.45
1:C:71:LYS:HE2	1:C:71:LYS:HB2	1.57	0.45
1:C:138:GLU:O	1:C:141:LYS:HB2	2.16	0.44

Continued on next page...

Continued from previous page...

Atom-1	Atom-2	Interatomic distance (Å)	Clash overlap (Å)
1:A:210:HIS:H	1:A:213:LEU:HD12	1.81	0.44
1:B:30:ASP:O	1:B:38:PRO:HG3	2.17	0.44
1:B:82:ARG:HD2	2:F:2:NAG:H81	1.99	0.44
1:D:136:TRP:O	1:D:139:ARG:HG2	2.18	0.44
1:C:154:TYR:HB3	1:C:155:PRO:HD3	1.98	0.44
1:A:148:CYS:HB2	1:A:162:TRP:CZ2	2.53	0.44
1:C:23:LEU:HD23	1:C:117:ILE:HG12	1.99	0.44
1:C:26:PRO:HB2	1:C:31:THR:HG23	1.98	0.44
1:A:131:THR:HB	1:A:222:LEU:HD22	1.99	0.44
1:A:31:THR:HG22	1:A:95:LEU:CD1	2.47	0.43
1:B:71:LYS:HG2	1:B:84:VAL:O	2.18	0.43
1:D:60:VAL:O	1:D:62:GLY:N	2.51	0.43
1:B:205:SER:HA	1:B:221:SER:HA	2.00	0.43
1:D:42:CYS:HB2	1:D:58:TRP:CZ2	2.53	0.43
1:A:21:VAL:HG21	1:A:104:VAL:HG21	2.00	0.43
1:B:56:PHE:HA	1:B:103:LYS:O	2.18	0.43
1:C:95:LEU:HA	1:C:119:LYS:HD3	2.01	0.42
1:B:78:ASN:HB3	1:B:80:THR:HG23	2.02	0.42
1:D:173:LYS:HE2	1:D:173:LYS:HB2	1.84	0.42
1:C:99:GLU:HA	1:C:118:SER:HB3	2.02	0.42
1:A:127:PRO:HG2	1:A:213:LEU:HD21	2.01	0.42
1:D:207:SER:HB3	1:D:217:TYR:CE1	2.55	0.42
1:B:104:VAL:H	1:B:113:ILE:HG23	1.84	0.41
1:D:131:THR:HB	1:D:222:LEU:HD22	2.02	0.41
1:C:115:LYS:HB3	1:C:115:LYS:HE2	1.76	0.41
1:D:30:ASP:HB2	1:D:36:ARG:HB2	2.03	0.41
1:C:164:SER:HB2	1:C:204:PHE:CD1	2.55	0.41
1:C:220:LYS:HA	1:C:220:LYS:HD2	1.80	0.41
1:B:210:HIS:HD2	1:B:212:ALA:H	1.68	0.41
1:D:74:GLU:HG2	1:D:82:ARG:O	2.21	0.41
1:D:90:LEU:HD23	1:D:90:LEU:HA	1.90	0.41
1:C:40:VAL:HG23	1:C:87:LEU:HB3	2.02	0.41
1:C:58:TRP:CG	1:C:87:LEU:HD13	2.55	0.41
1:A:174:THR:HG23	1:A:187:LEU:HD13	2.03	0.41
1:A:223:SER:O	1:A:224:ARG:HB2	2.20	0.41
1:D:52:PRO:HB2	1:D:53:GLU:H	1.64	0.41
1:D:59:TYR:HA	1:D:64:GLU:HA	2.02	0.41
1:B:107:LYS:HE2	1:B:107:LYS:HB3	1.91	0.41
2:G:2:NAG:H83	2:G:7:MAN:O4	2.21	0.40
1:B:78:ASN:C	1:B:80:THR:H	2.27	0.40
1:C:23:LEU:HD11	1:C:102:CYS:HB3	2.03	0.40

Continued on next page...

Continued from previous page...

Atom-1	Atom-2	Interatomic distance (Å)	Clash overlap (Å)
1:C:56:PHE:O	1:C:69:LYS:NZ	2.34	0.40
1:C:206:CYS:O	1:C:219:GLN:HA	2.21	0.40
1:A:37:THR:HA	1:A:38:PRO:HD3	1.90	0.40
1:D:30:ASP:HA	1:D:36:ARG:HD3	2.04	0.40
1:C:136:TRP:HA	1:C:139:ARG:NE	2.36	0.40
1:A:30:ASP:HB3	1:A:36:ARG:CD	2.52	0.40

All (1) symmetry-related close contacts are listed below. The label for Atom-2 includes the symmetry operator and encoded unit-cell translations to be applied.

Atom-1	Atom-2	Interatomic distance (Å)	Clash overlap (Å)
1:A:75:GLU:OE1	1:B:101:LYS:NZ[1_655]	2.13	0.07

5.3 Torsion angles [i](#)

5.3.1 Protein backbone [i](#)

In the following table, the Percentiles column shows the percent Ramachandran outliers of the chain as a percentile score with respect to all X-ray entries followed by that with respect to entries of similar resolution.

The Analysed column shows the number of residues for which the backbone conformation was analysed, and the total number of residues.

Mol	Chain	Analysed	Favoured	Allowed	Outliers	Percentiles	
1	A	204/223 (92%)	191 (94%)	10 (5%)	3 (2%)	8	31
1	B	204/223 (92%)	183 (90%)	19 (9%)	2 (1%)	13	40
1	C	204/223 (92%)	191 (94%)	12 (6%)	1 (0%)	25	56
1	D	204/223 (92%)	194 (95%)	8 (4%)	2 (1%)	13	40
All	All	816/892 (92%)	759 (93%)	49 (6%)	8 (1%)	13	40

All (8) Ramachandran outliers are listed below:

Mol	Chain	Res	Type
1	B	140	THR
1	C	47	VAL
1	D	52	PRO
1	D	61	ASP

Continued on next page...

Continued from previous page...

Mol	Chain	Res	Type
1	A	53	GLU
1	A	61	ASP
1	A	156	SER
1	B	112	PRO

5.3.2 Protein sidechains ⓘ

In the following table, the Percentiles column shows the percent sidechain outliers of the chain as a percentile score with respect to all X-ray entries followed by that with respect to entries of similar resolution.

The Analysed column shows the number of residues for which the sidechain conformation was analysed, and the total number of residues.

Mol	Chain	Analysed	Rotameric	Outliers	Percentiles	
1	A	192/205 (94%)	192 (100%)	0	100	100
1	B	192/205 (94%)	191 (100%)	1 (0%)	86	92
1	C	192/205 (94%)	192 (100%)	0	100	100
1	D	192/205 (94%)	192 (100%)	0	100	100
All	All	768/820 (94%)	767 (100%)	1 (0%)	92	97

All (1) residues with a non-rotameric sidechain are listed below:

Mol	Chain	Res	Type
1	B	117	ILE

Sometimes sidechains can be flipped to improve hydrogen bonding and reduce clashes. All (11) such sidechains are listed below:

Mol	Chain	Res	Type
1	C	66	HIS
1	C	128	GLN
1	C	210	HIS
1	C	216	HIS
1	A	57	ASN
1	B	49	HIS
1	B	78	ASN
1	B	91	HIS
1	B	210	HIS
1	B	216	HIS
1	D	167	GLN

5.3.3 RNA ⓘ

There are no RNA molecules in this entry.

5.4 Non-standard residues in protein, DNA, RNA chains ⓘ

There are no non-standard protein/DNA/RNA residues in this entry.

5.5 Carbohydrates ⓘ

35 monosaccharides are modelled in this entry.

In the following table, the Counts columns list the number of bonds (or angles) for which Mogul statistics could be retrieved, the number of bonds (or angles) that are observed in the model and the number of bonds (or angles) that are defined in the Chemical Component Dictionary. The Link column lists molecule types, if any, to which the group is linked. The Z score for a bond length (or angle) is the number of standard deviations the observed value is removed from the expected value. A bond length (or angle) with $|Z| > 2$ is considered an outlier worth inspection. RMSZ is the root-mean-square of all Z scores of the bond lengths (or angles).

Mol	Type	Chain	Res	Link	Bond lengths			Bond angles		
					Counts	RMSZ	# $ Z > 2$	Counts	RMSZ	# $ Z > 2$
3	NAG	E	1	3	14,14,15	0.57	0	17,19,21	0.83	1 (5%)
3	NAG	E	2	3	14,14,15	0.81	1 (7%)	17,19,21	0.94	0
3	BMA	E	3	3	11,11,12	0.83	1 (9%)	15,15,17	1.90	4 (26%)
3	MAN	E	4	3	11,11,12	1.26	2 (18%)	15,15,17	1.30	2 (13%)
3	NAG	E	5	3	14,14,15	0.53	0	17,19,21	0.92	2 (11%)
3	GAL	E	6	3	11,11,12	1.15	1 (9%)	15,15,17	1.34	3 (20%)
3	MAN	E	7	3	11,11,12	2.06	3 (27%)	15,15,17	1.68	3 (20%)
3	NAG	E	8	3	14,14,15	1.28	1 (7%)	17,19,21	1.13	1 (5%)
2	NAG	F	1	2	14,14,15	0.92	2 (14%)	17,19,21	1.27	3 (17%)
2	FUL	F	10	2	10,10,11	2.06	3 (30%)	14,14,16	1.25	2 (14%)
2	NAG	F	2	2	14,14,15	0.33	0	17,19,21	0.81	0
2	BMA	F	3	2	11,11,12	0.57	0	15,15,17	1.30	1 (6%)
2	MAN	F	4	2	11,11,12	0.94	0	15,15,17	1.12	2 (13%)
2	NAG	F	5	2	14,14,15	0.40	0	17,19,21	0.87	0
2	GAL	F	6	2	11,11,12	1.13	0	15,15,17	0.98	0
2	MAN	F	7	2	11,11,12	1.13	1 (9%)	15,15,17	1.17	2 (13%)
2	NAG	F	8	2	14,14,15	0.43	0	17,19,21	1.54	2 (11%)
2	GAL	F	9	2	11,11,12	1.28	2 (18%)	15,15,17	1.25	1 (6%)
2	NAG	G	1	2	14,14,15	0.35	0	17,19,21	0.75	0

Mol	Type	Chain	Res	Link	Bond lengths			Bond angles		
					Counts	RMSZ	# Z > 2	Counts	RMSZ	# Z > 2
2	FUL	G	10	2	10,10,11	1.84	2 (20%)	14,14,16	1.65	3 (21%)
2	NAG	G	2	2	14,14,15	0.31	0	17,19,21	0.91	1 (5%)
2	BMA	G	3	2	11,11,12	1.00	0	15,15,17	1.11	1 (6%)
2	MAN	G	4	2	11,11,12	1.07	1 (9%)	15,15,17	0.88	0
2	NAG	G	5	2	14,14,15	0.34	0	17,19,21	0.46	0
2	GAL	G	6	2	11,11,12	1.10	0	15,15,17	0.93	0
2	MAN	G	7	2	11,11,12	0.77	0	15,15,17	1.27	2 (13%)
2	NAG	G	8	2	14,14,15	0.40	0	17,19,21	1.15	2 (11%)
2	GAL	G	9	2	11,11,12	1.60	3 (27%)	15,15,17	1.22	2 (13%)
4	NAG	H	1	4	14,14,15	0.73	1 (7%)	17,19,21	0.71	0
4	NAG	H	2	4	14,14,15	0.91	1 (7%)	17,19,21	0.86	1 (5%)
4	BMA	H	3	4	11,11,12	0.69	0	15,15,17	1.17	1 (6%)
4	MAN	H	4	4	11,11,12	0.96	0	15,15,17	1.48	1 (6%)
4	NAG	H	5	4	14,14,15	0.28	0	17,19,21	0.55	0
5	MAN	I	1	5	11,11,12	1.64	2 (18%)	15,15,17	1.47	3 (20%)
5	NAG	I	2	5	14,14,15	1.12	1 (7%)	17,19,21	1.30	1 (5%)

In the following table, the Chirals column lists the number of chiral outliers, the number of chiral centers analysed, the number of these observed in the model and the number defined in the Chemical Component Dictionary. Similar counts are reported in the Torsion and Rings columns. '-' means no outliers of that kind were identified.

Mol	Type	Chain	Res	Link	Chirals	Torsions	Rings
3	NAG	E	1	3	-	4/6/23/26	0/1/1/1
3	NAG	E	2	3	-	2/6/23/26	0/1/1/1
3	BMA	E	3	3	-	2/2/19/22	0/1/1/1
3	MAN	E	4	3	-	1/2/19/22	1/1/1/1
3	NAG	E	5	3	-	2/6/23/26	0/1/1/1
3	GAL	E	6	3	-	1/2/19/22	0/1/1/1
3	MAN	E	7	3	-	0/2/19/22	0/1/1/1
3	NAG	E	8	3	-	4/6/23/26	0/1/1/1
2	NAG	F	1	2	-	4/6/23/26	0/1/1/1
2	FUL	F	10	2	-	-	0/1/1/1
2	NAG	F	2	2	-	3/6/23/26	0/1/1/1
2	BMA	F	3	2	-	1/2/19/22	0/1/1/1
2	MAN	F	4	2	-	0/2/19/22	0/1/1/1
2	NAG	F	5	2	-	1/6/23/26	0/1/1/1
2	GAL	F	6	2	-	0/2/19/22	0/1/1/1

Continued on next page...

Continued from previous page...

Mol	Type	Chain	Res	Link	Chirals	Torsions	Rings
2	MAN	F	7	2	-	2/2/19/22	0/1/1/1
2	NAG	F	8	2	-	2/6/23/26	0/1/1/1
2	GAL	F	9	2	-	0/2/19/22	0/1/1/1
2	NAG	G	1	2	-	3/6/23/26	0/1/1/1
2	FUL	G	10	2	-	-	0/1/1/1
2	NAG	G	2	2	-	1/6/23/26	0/1/1/1
2	BMA	G	3	2	-	0/2/19/22	0/1/1/1
2	MAN	G	4	2	-	0/2/19/22	0/1/1/1
2	NAG	G	5	2	-	3/6/23/26	0/1/1/1
2	GAL	G	6	2	-	0/2/19/22	0/1/1/1
2	MAN	G	7	2	-	0/2/19/22	0/1/1/1
2	NAG	G	8	2	-	0/6/23/26	0/1/1/1
2	GAL	G	9	2	-	0/2/19/22	0/1/1/1
4	NAG	H	1	4	-	2/6/23/26	0/1/1/1
4	NAG	H	2	4	-	0/6/23/26	0/1/1/1
4	BMA	H	3	4	-	2/2/19/22	0/1/1/1
4	MAN	H	4	4	-	1/2/19/22	1/1/1/1
4	NAG	H	5	4	-	2/6/23/26	0/1/1/1
5	MAN	I	1	5	-	2/2/19/22	0/1/1/1
5	NAG	I	2	5	-	2/6/23/26	0/1/1/1

All (28) bond length outliers are listed below:

Mol	Chain	Res	Type	Atoms	Z	Observed(Å)	Ideal(Å)
2	F	10	FUL	O5-C1	5.14	1.51	1.43
3	E	7	MAN	C2-C3	4.76	1.59	1.52
2	G	10	FUL	O5-C1	4.73	1.51	1.43
3	E	8	NAG	O5-C1	4.34	1.50	1.43
5	I	2	NAG	O5-C1	4.02	1.50	1.43
5	I	1	MAN	O5-C1	-3.34	1.38	1.43
5	I	1	MAN	C4-C5	3.27	1.59	1.53
3	E	7	MAN	C4-C3	3.13	1.60	1.52
2	G	9	GAL	C2-C3	2.83	1.56	1.52
2	F	9	GAL	C2-C3	2.80	1.56	1.52
3	E	2	NAG	O5-C1	-2.71	1.39	1.43
2	G	9	GAL	C1-C2	2.61	1.58	1.52
2	F	1	NAG	O5-C1	2.46	1.47	1.43
4	H	1	NAG	O5-C1	-2.46	1.39	1.43
4	H	2	NAG	C1-C2	2.43	1.56	1.52
2	G	4	MAN	C4-C3	2.41	1.58	1.52

Continued on next page...

Continued from previous page...

Mol	Chain	Res	Type	Atoms	Z	Observed(Å)	Ideal(Å)
2	F	10	FUL	O5-C5	2.39	1.48	1.43
3	E	4	MAN	O2-C2	-2.39	1.38	1.43
3	E	4	MAN	C2-C3	2.39	1.56	1.52
2	F	9	GAL	C1-C2	2.38	1.57	1.52
3	E	7	MAN	O5-C5	2.38	1.48	1.43
2	F	10	FUL	C2-C3	-2.33	1.49	1.52
2	G	9	GAL	C4-C3	2.27	1.58	1.52
2	F	1	NAG	C1-C2	2.20	1.55	1.52
3	E	3	BMA	C2-C3	2.18	1.55	1.52
3	E	6	GAL	C4-C5	2.16	1.57	1.53
2	F	7	MAN	C4-C5	2.13	1.57	1.53
2	G	10	FUL	O5-C5	2.01	1.47	1.43

All (47) bond angle outliers are listed below:

Mol	Chain	Res	Type	Atoms	Z	Observed(°)	Ideal(°)
3	E	3	BMA	C1-C2-C3	5.11	115.95	109.67
5	I	2	NAG	C1-O5-C5	5.09	119.09	112.19
2	F	8	NAG	C1-O5-C5	4.63	118.46	112.19
4	H	4	MAN	C1-O5-C5	4.61	118.44	112.19
3	E	8	NAG	C1-O5-C5	4.27	117.97	112.19
2	G	10	FUL	C1-C2-C3	3.99	114.57	109.67
3	E	7	MAN	C1-O5-C5	3.85	117.41	112.19
2	F	3	BMA	C1-O5-C5	3.79	117.33	112.19
3	E	4	MAN	C1-O5-C5	3.35	116.74	112.19
2	F	8	NAG	C3-C4-C5	3.34	116.20	110.24
5	I	1	MAN	C3-C4-C5	3.23	116.00	110.24
2	G	7	MAN	O2-C2-C3	-3.11	103.91	110.14
4	H	3	BMA	C1-O5-C5	3.04	116.31	112.19
2	G	9	GAL	O5-C1-C2	-3.03	106.10	110.77
3	E	1	NAG	C1-O5-C5	2.97	116.22	112.19
2	F	9	GAL	C1-C2-C3	2.96	113.31	109.67
3	E	7	MAN	C2-C3-C4	2.91	115.93	110.89
3	E	3	BMA	C2-C3-C4	2.90	115.91	110.89
2	G	10	FUL	C3-C4-C5	2.87	114.25	109.77
3	E	7	MAN	O2-C2-C3	2.82	115.79	110.14
2	F	4	MAN	C1-C2-C3	2.81	113.11	109.67
2	G	8	NAG	C1-O5-C5	2.76	115.93	112.19
3	E	6	GAL	O5-C5-C6	-2.72	102.94	107.20
2	F	4	MAN	O2-C2-C3	-2.60	104.92	110.14
2	F	10	FUL	C3-C4-C5	2.60	113.83	109.77
5	I	1	MAN	C1-O5-C5	2.52	115.61	112.19

Continued on next page...

Continued from previous page...

Mol	Chain	Res	Type	Atoms	Z	Observed(°)	Ideal(°)
2	G	7	MAN	C1-O5-C5	2.50	115.58	112.19
3	E	4	MAN	O3-C3-C2	2.45	114.68	109.99
2	F	7	MAN	C1-O5-C5	2.41	115.45	112.19
3	E	5	NAG	C2-N2-C7	2.38	126.30	122.90
2	F	10	FUL	O5-C5-C4	2.37	113.77	109.52
3	E	6	GAL	C1-O5-C5	2.36	115.39	112.19
2	F	1	NAG	C1-O5-C5	2.30	115.31	112.19
2	F	1	NAG	O4-C4-C5	2.30	115.00	109.30
2	G	9	GAL	O2-C2-C1	2.27	113.80	109.15
3	E	5	NAG	C1-O5-C5	2.20	115.18	112.19
5	I	1	MAN	O2-C2-C3	-2.19	105.76	110.14
2	G	3	BMA	O3-C3-C4	-2.16	105.36	110.35
2	F	7	MAN	C1-C2-C3	-2.15	107.02	109.67
4	H	2	NAG	C4-C3-C2	2.15	114.17	111.02
2	G	10	FUL	C2-C3-C4	2.12	114.57	110.89
3	E	6	GAL	O5-C1-C2	-2.12	107.50	110.77
2	G	8	NAG	O4-C4-C5	2.11	114.53	109.30
2	G	2	NAG	C3-C4-C5	2.05	113.89	110.24
2	F	1	NAG	C3-C4-C5	-2.04	106.61	110.24
3	E	3	BMA	C1-O5-C5	2.03	114.95	112.19
3	E	3	BMA	O2-C2-C3	-2.03	106.07	110.14

There are no chirality outliers.

All (47) torsion outliers are listed below:

Mol	Chain	Res	Type	Atoms
2	G	1	NAG	C3-C2-N2-C7
2	F	8	NAG	C3-C2-N2-C7
5	I	1	MAN	C4-C5-C6-O6
5	I	1	MAN	O5-C5-C6-O6
4	H	3	BMA	O5-C5-C6-O6
3	E	3	BMA	O5-C5-C6-O6
3	E	3	BMA	C4-C5-C6-O6
4	H	3	BMA	C4-C5-C6-O6
4	H	5	NAG	O5-C5-C6-O6
2	G	5	NAG	C8-C7-N2-C2
2	G	5	NAG	O7-C7-N2-C2
2	F	1	NAG	C8-C7-N2-C2
2	F	1	NAG	O7-C7-N2-C2
2	F	2	NAG	C8-C7-N2-C2
2	F	2	NAG	O7-C7-N2-C2
3	E	1	NAG	C8-C7-N2-C2

Continued on next page...

Continued from previous page...

Mol	Chain	Res	Type	Atoms
3	E	1	NAG	O7-C7-N2-C2
3	E	5	NAG	C8-C7-N2-C2
3	E	5	NAG	O7-C7-N2-C2
3	E	8	NAG	C8-C7-N2-C2
3	E	8	NAG	O7-C7-N2-C2
5	I	2	NAG	C8-C7-N2-C2
5	I	2	NAG	O7-C7-N2-C2
2	F	7	MAN	O5-C5-C6-O6
4	H	5	NAG	C4-C5-C6-O6
2	G	1	NAG	C4-C5-C6-O6
2	G	5	NAG	O5-C5-C6-O6
3	E	4	MAN	O5-C5-C6-O6
4	H	1	NAG	C4-C5-C6-O6
2	G	1	NAG	O5-C5-C6-O6
4	H	1	NAG	O5-C5-C6-O6
3	E	8	NAG	C4-C5-C6-O6
3	E	6	GAL	O5-C5-C6-O6
2	G	2	NAG	O5-C5-C6-O6
4	H	4	MAN	O5-C5-C6-O6
2	F	8	NAG	O5-C5-C6-O6
3	E	2	NAG	O5-C5-C6-O6
2	F	7	MAN	C4-C5-C6-O6
2	F	2	NAG	C4-C5-C6-O6
2	F	1	NAG	C4-C5-C6-O6
3	E	2	NAG	C3-C2-N2-C7
3	E	1	NAG	C4-C5-C6-O6
2	F	1	NAG	O5-C5-C6-O6
2	F	5	NAG	C4-C5-C6-O6
3	E	8	NAG	O5-C5-C6-O6
3	E	1	NAG	O5-C5-C6-O6
2	F	3	BMA	O5-C5-C6-O6

All (2) ring outliers are listed below:

Mol	Chain	Res	Type	Atoms
4	H	4	MAN	C1-C2-C3-C4-C5-O5
3	E	4	MAN	C1-C2-C3-C4-C5-O5

8 monomers are involved in 9 short contacts:

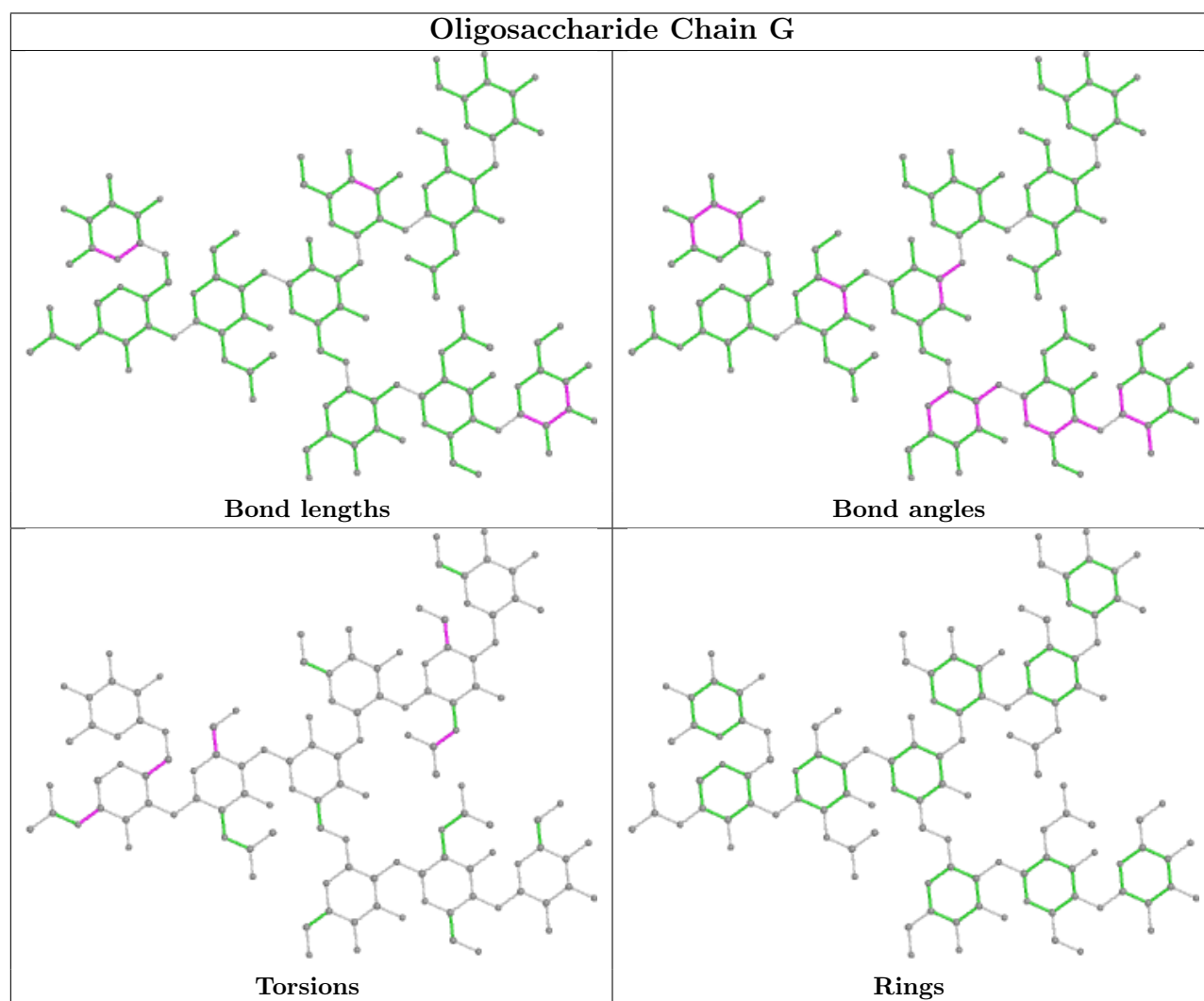
Mol	Chain	Res	Type	Clashes	Symm-Clashes
2	G	1	NAG	2	0

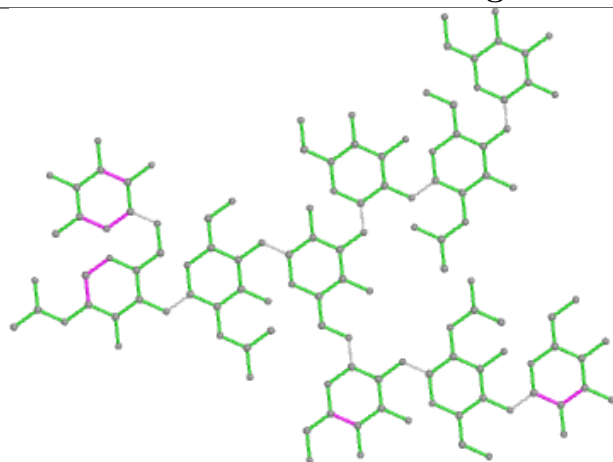
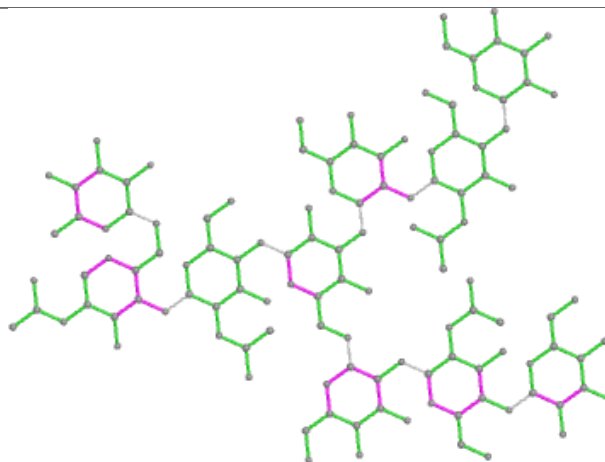
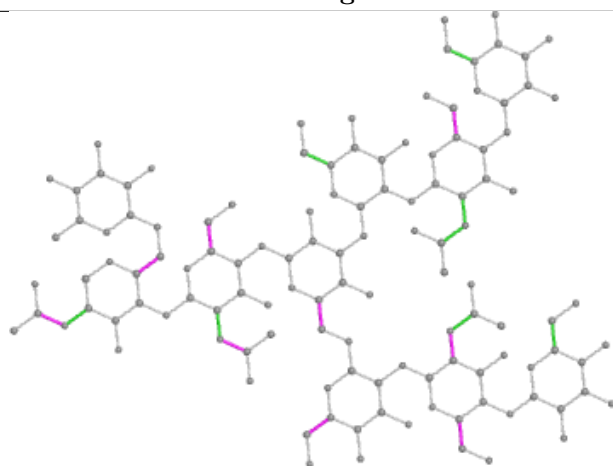
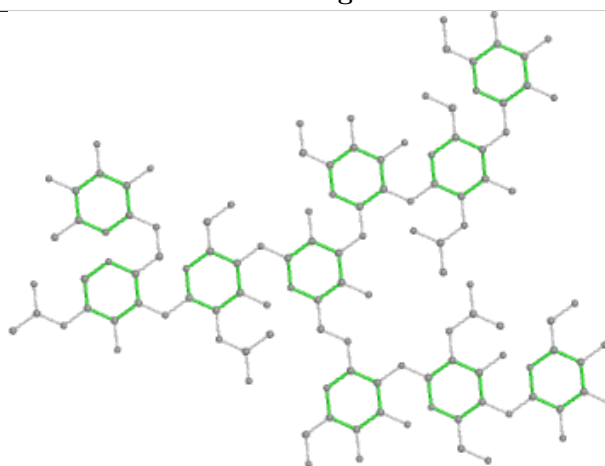
Continued on next page...

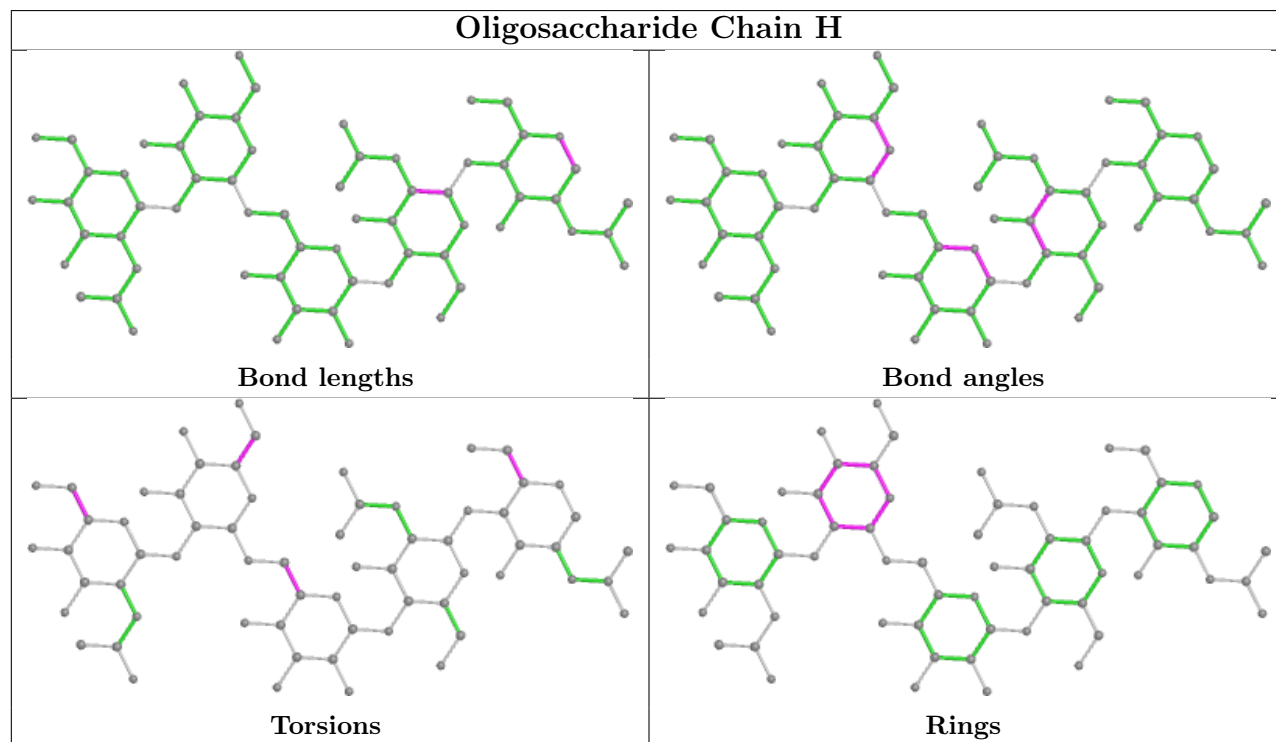
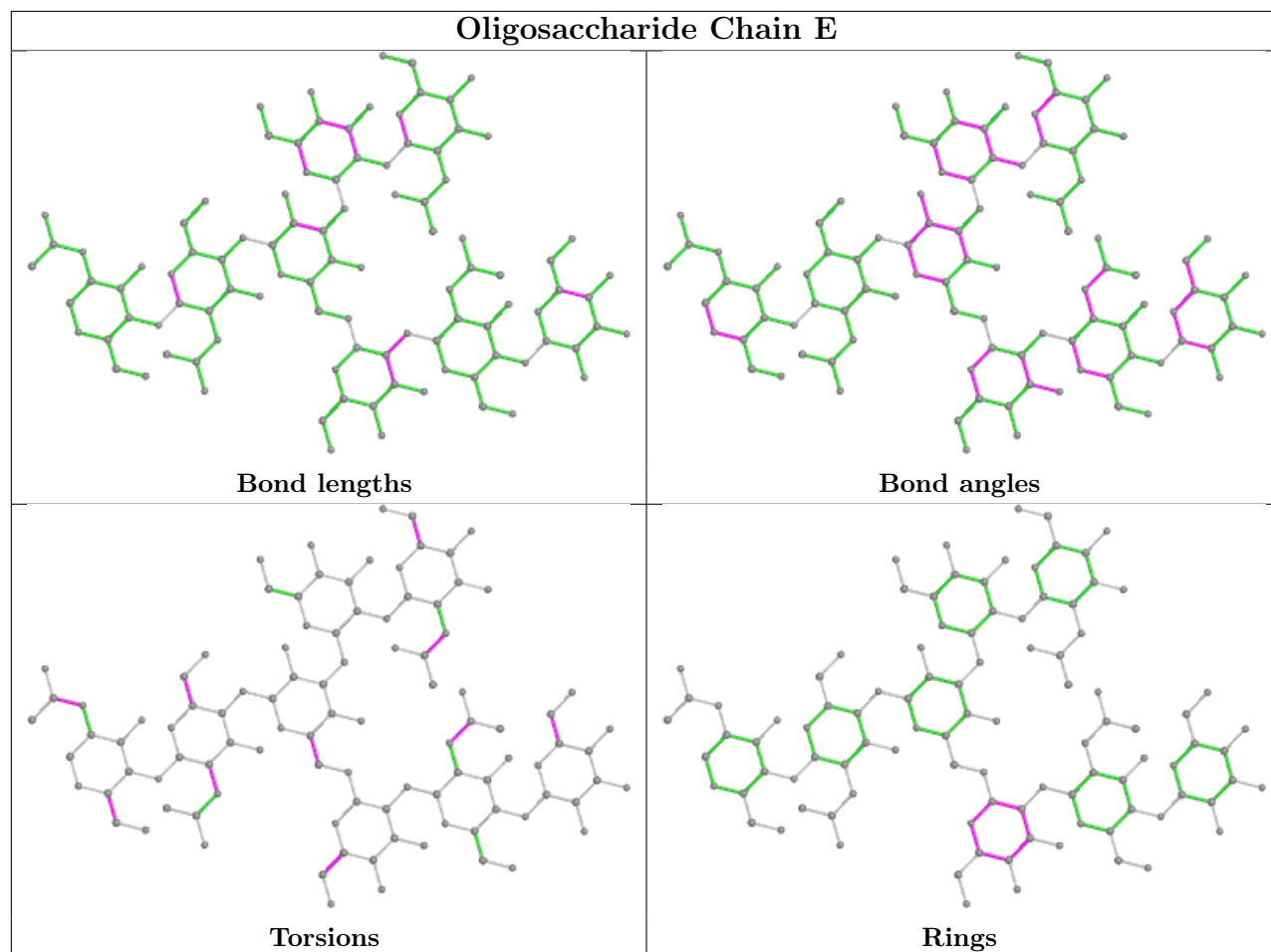
Continued from previous page...

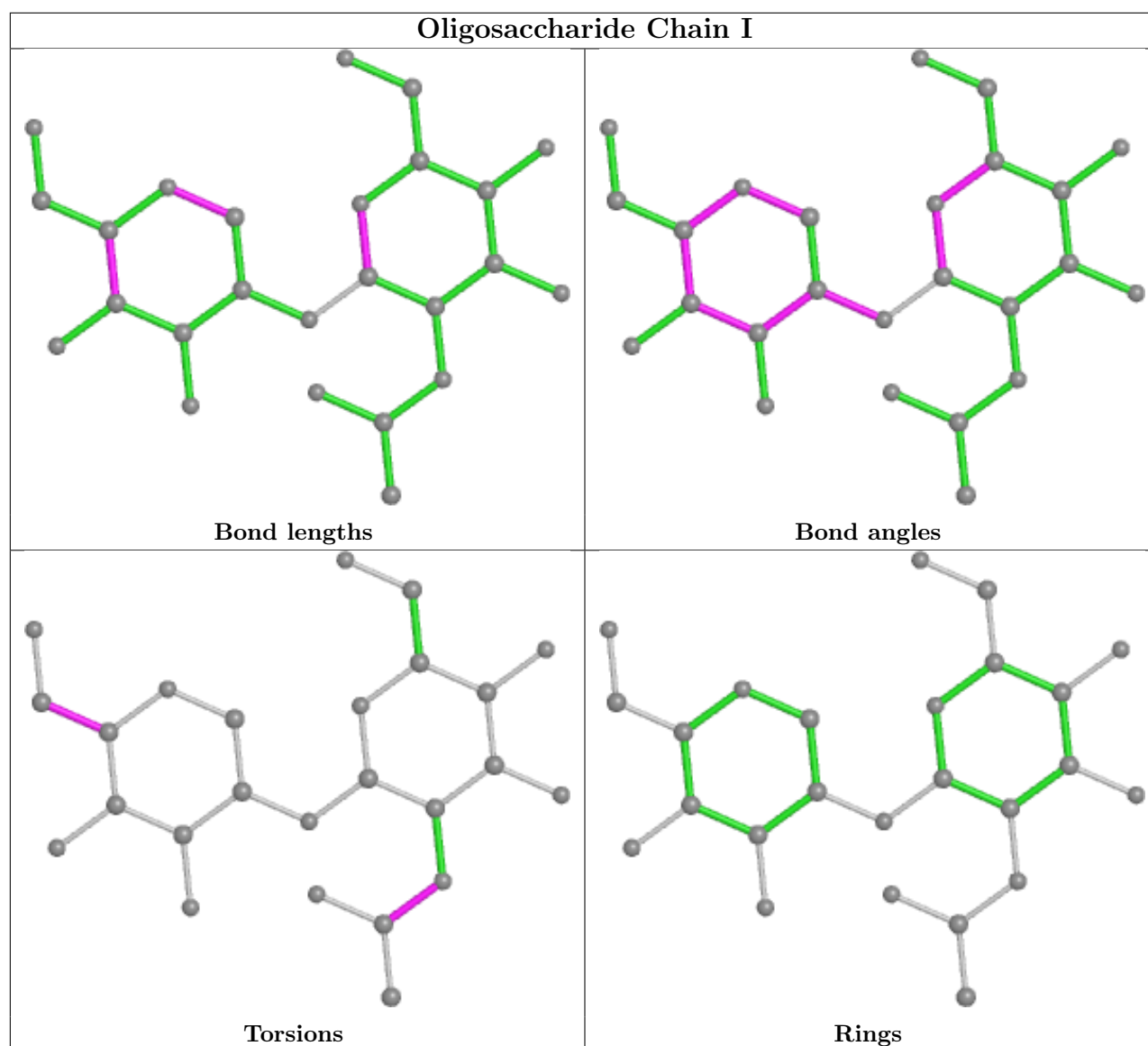
Mol	Chain	Res	Type	Clashes	Symm-Clashes
3	E	5	NAG	1	0
2	F	4	MAN	1	0
2	G	2	NAG	1	0
2	F	1	NAG	2	0
4	H	2	NAG	1	0
2	F	2	NAG	2	0
2	G	7	MAN	1	0

The following is a two-dimensional graphical depiction of Mogul quality analysis of bond lengths, bond angles, torsion angles, and ring geometry for oligosaccharide.



Oligosaccharide Chain F**Bond lengths****Bond angles****Torsions****Rings**





5.6 Ligand geometry [i](#)

1 ligand is modelled in this entry.

In the following table, the Counts columns list the number of bonds (or angles) for which Mogul statistics could be retrieved, the number of bonds (or angles) that are observed in the model and the number of bonds (or angles) that are defined in the Chemical Component Dictionary. The Link column lists molecule types, if any, to which the group is linked. The Z score for a bond length (or angle) is the number of standard deviations the observed value is removed from the expected value. A bond length (or angle) with $|Z| > 2$ is considered an outlier worth inspection. RMSZ is the root-mean-square of all Z scores of the bond lengths (or angles).

Mol	Type	Chain	Res	Link	Bond lengths			Bond angles		
					Counts	RMSZ	$\# Z > 2$	Counts	RMSZ	$\# Z > 2$
6	GAL	D	301	-	11,11,12	1.78	3 (27%)	15,15,17	1.30	2 (13%)

In the following table, the Chirals column lists the number of chiral outliers, the number of chiral centers analysed, the number of these observed in the model and the number defined in the Chemical Component Dictionary. Similar counts are reported in the Torsion and Rings columns. '-' means no outliers of that kind were identified.

Mol	Type	Chain	Res	Link	Chirals	Torsions	Rings
6	GAL	D	301	-	-	1/2/19/22	0/1/1/1

All (3) bond length outliers are listed below:

Mol	Chain	Res	Type	Atoms	Z	Observed(Å)	Ideal(Å)
6	D	301	GAL	C2-C3	3.21	1.57	1.52
6	D	301	GAL	C4-C3	2.95	1.59	1.52
6	D	301	GAL	C1-C2	2.20	1.57	1.52

All (2) bond angle outliers are listed below:

Mol	Chain	Res	Type	Atoms	Z	Observed(°)	Ideal(°)
6	D	301	GAL	C1-C2-C3	3.06	113.42	109.67
6	D	301	GAL	O2-C2-C1	2.19	113.64	109.15

There are no chirality outliers.

All (1) torsion outliers are listed below:

Mol	Chain	Res	Type	Atoms
6	D	301	GAL	O5-C5-C6-O6

There are no ring outliers.

No monomer is involved in short contacts.

5.7 Other polymers [i](#)

There are no such residues in this entry.

5.8 Polymer linkage issues [i](#)

There are no chain breaks in this entry.

6 Fit of model and data [i](#)

6.1 Protein, DNA and RNA chains [i](#)

In the following table, the column labelled ‘#RSRZ> 2’ contains the number (and percentage) of RSRZ outliers, followed by percent RSRZ outliers for the chain as percentile scores relative to all X-ray entries and entries of similar resolution. The OWAB column contains the minimum, median, 95th percentile and maximum values of the occupancy-weighted average B-factor per residue. The column labelled ‘Q< 0.9’ lists the number of (and percentage) of residues with an average occupancy less than 0.9.

Mol	Chain	Analysed	<RSRZ>	#RSRZ>2	OWAB(Å ²)	Q<0.9
1	A	206/223 (92%)	-0.55	0 100 100	20, 67, 116, 138	0
1	B	206/223 (92%)	-0.47	0 100 100	28, 62, 107, 136	0
1	C	206/223 (92%)	-0.69	0 100 100	17, 44, 75, 96	0
1	D	206/223 (92%)	-0.67	0 100 100	27, 54, 74, 86	0
All	All	824/892 (92%)	-0.59	0 100 100	17, 54, 100, 138	0

There are no RSRZ outliers to report.

6.2 Non-standard residues in protein, DNA, RNA chains [i](#)

There are no non-standard protein/DNA/RNA residues in this entry.

6.3 Carbohydrates [i](#)

In the following table, the Atoms column lists the number of modelled atoms in the group and the number defined in the chemical component dictionary. The B-factors column lists the minimum, median, 95th percentile and maximum values of B factors of atoms in the group. The column labelled ‘Q< 0.9’ lists the number of atoms with occupancy less than 0.9.

Mol	Type	Chain	Res	Atoms	RSCC	RSR	B-factors(Å ²)	Q<0.9
2	GAL	G	9	11/12	0.51	0.11	92,114,122,128	0
5	NAG	I	2	14/15	0.51	0.12	101,113,122,129	0
2	NAG	G	8	14/15	0.53	0.15	72,82,95,111	0
2	GAL	F	6	11/12	0.55	0.20	125,137,146,146	0
2	NAG	F	8	14/15	0.55	0.20	62,101,120,122	0
2	GAL	G	6	11/12	0.55	0.12	92,109,114,117	0
3	NAG	E	1	14/15	0.56	0.19	77,97,105,106	0
2	NAG	G	1	14/15	0.56	0.21	68,100,116,134	0
2	NAG	F	1	14/15	0.63	0.11	104,118,131,135	0

Continued on next page...

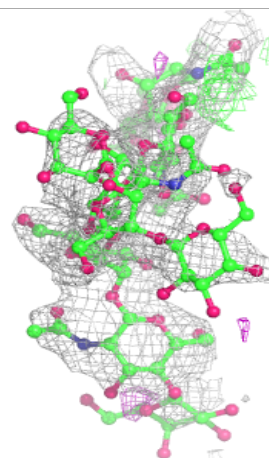
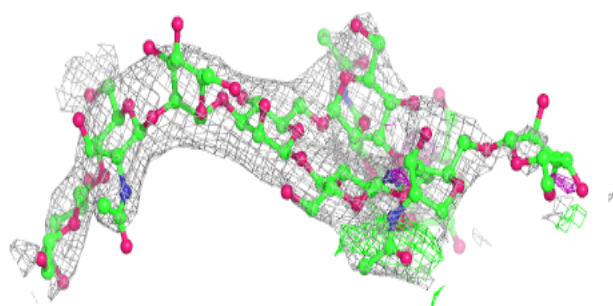
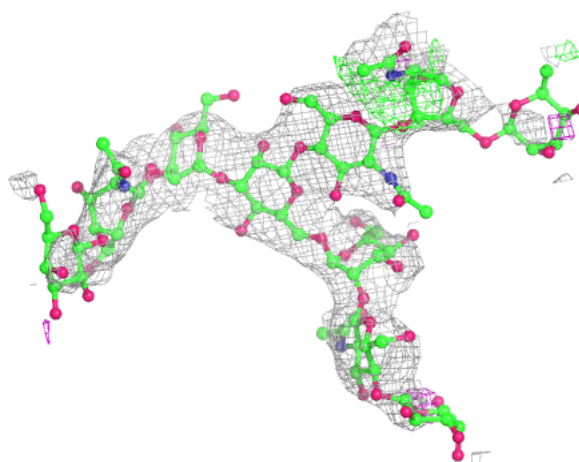
Continued from previous page...

Mol	Type	Chain	Res	Atoms	RSCC	RSR	B-factors(\AA^2)	Q<0.9
3	NAG	E	5	14/15	0.66	0.09	93,109,113,114	0
2	FUL	G	10	10/11	0.69	0.28	128,144,152,154	0
3	GAL	E	6	11/12	0.70	0.11	94,106,122,123	0
2	NAG	G	5	14/15	0.70	0.14	90,110,119,124	0
2	NAG	F	5	14/15	0.75	0.11	91,120,138,139	0
2	MAN	G	4	11/12	0.76	0.09	95,99,107,107	0
2	MAN	F	7	11/12	0.77	0.17	83,96,100,104	0
2	BMA	F	3	11/12	0.81	0.10	85,91,100,104	0
2	BMA	G	3	11/12	0.81	0.09	72,78,90,92	0
2	GAL	F	9	11/12	-	-	97,119,128,138	0
2	FUL	F	10	10/11	-	-	126,133,142,142	0
2	NAG	G	2	14/15	0.81	0.12	74,81,89,89	0
2	MAN	G	7	11/12	0.83	0.07	68,78,86,90	0
2	NAG	F	2	14/15	0.83	0.11	94,104,117,124	0
3	NAG	E	8	14/15	0.83	0.09	75,109,116,119	0
3	MAN	E	4	11/12	0.83	0.11	88,99,104,108	0
3	BMA	E	3	11/12	0.84	0.10	72,93,97,97	0
4	BMA	H	3	11/12	0.86	0.10	71,78,83,89	0
4	MAN	H	4	11/12	0.86	0.11	67,72,84,84	0
2	MAN	F	4	11/12	0.86	0.08	90,102,109,110	0
3	MAN	E	7	11/12	0.87	0.08	94,101,109,110	0
3	NAG	E	2	14/15	0.88	0.10	81,95,102,102	0
5	MAN	I	1	11/12	0.89	0.10	92,103,108,110	0
4	NAG	H	1	14/15	0.89	0.09	62,73,75,75	0
4	NAG	H	5	14/15	0.91	0.08	53,62,65,66	0
4	NAG	H	2	14/15	0.92	0.09	45,72,83,89	0

The following is a graphical depiction of the model fit to experimental electron density for oligosaccharide. Each fit is shown from different orientation to approximate a three-dimensional view.

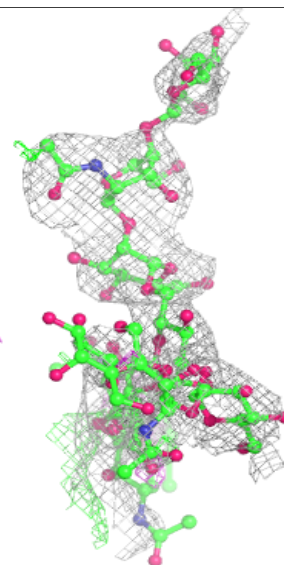
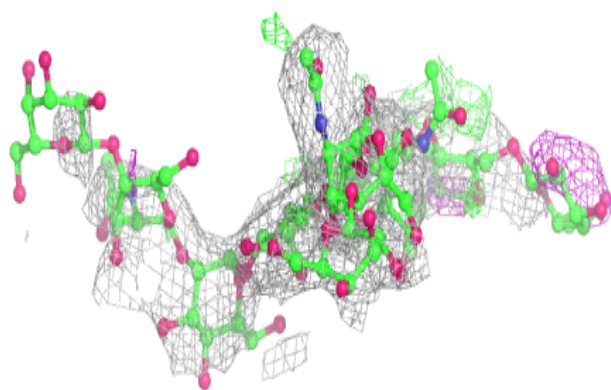
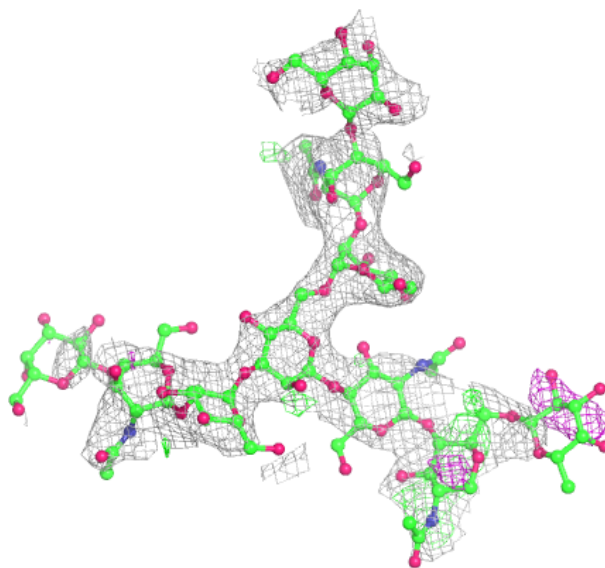
Electron density around Chain G:

$2mF_o-DF_c$ (at 0.7 rmsd) in gray
 mF_o-DF_c (at 3 rmsd) in purple (negative)
and green (positive)



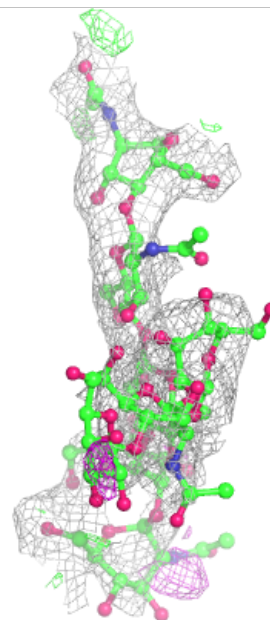
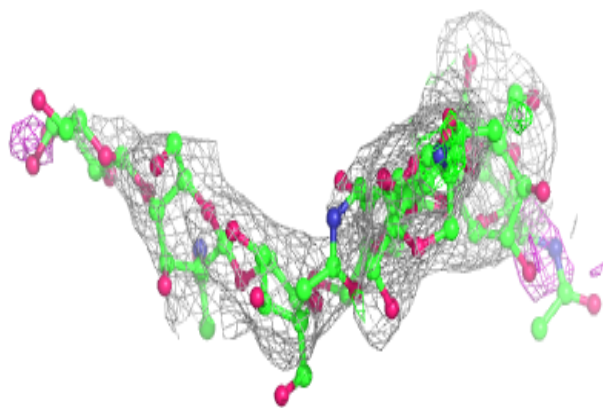
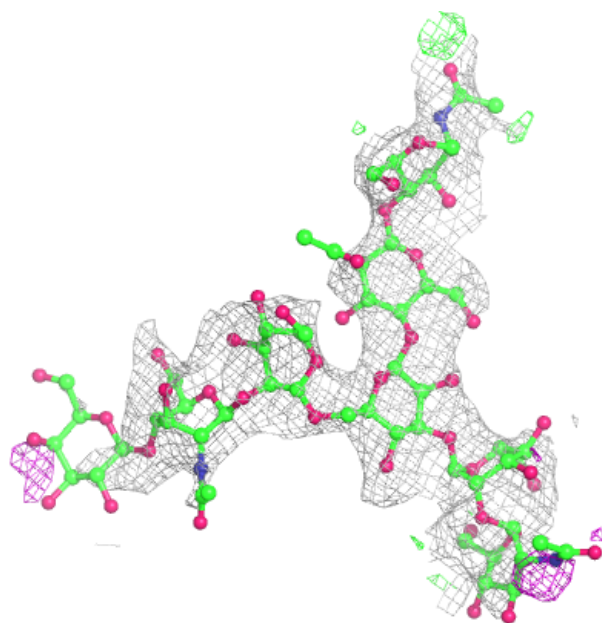
Electron density around Chain F:

$2mF_o-DF_c$ (at 0.7 rmsd) in gray
 mF_o-DF_c (at 3 rmsd) in purple (negative)
and green (positive)



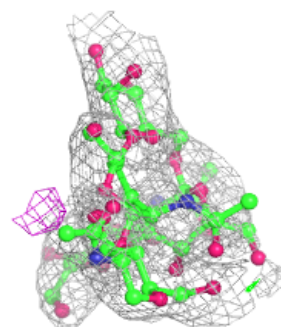
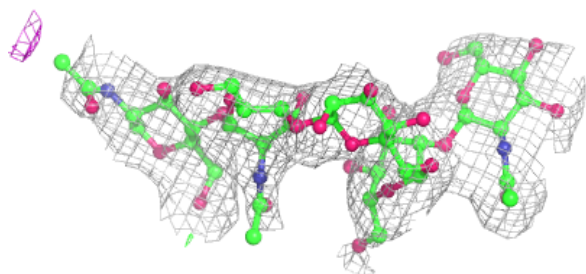
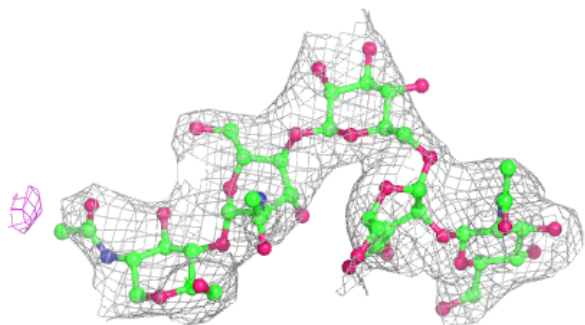
Electron density around Chain E:

$2mF_o-DF_c$ (at 0.7 rmsd) in gray
 mF_o-DF_c (at 3 rmsd) in purple (negative)
and green (positive)

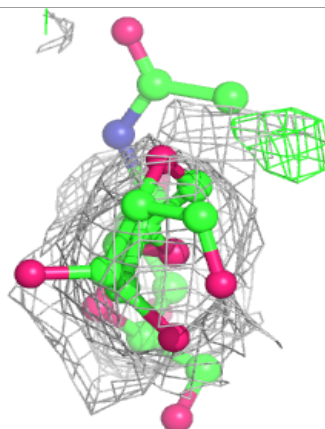
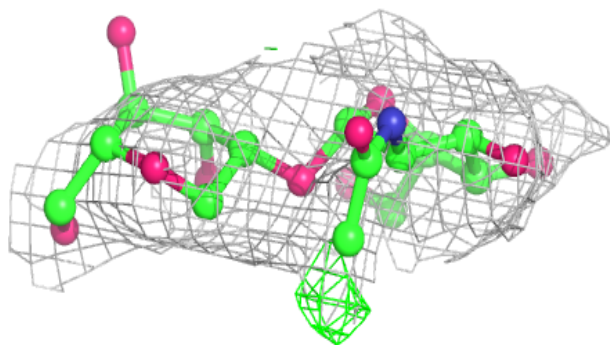
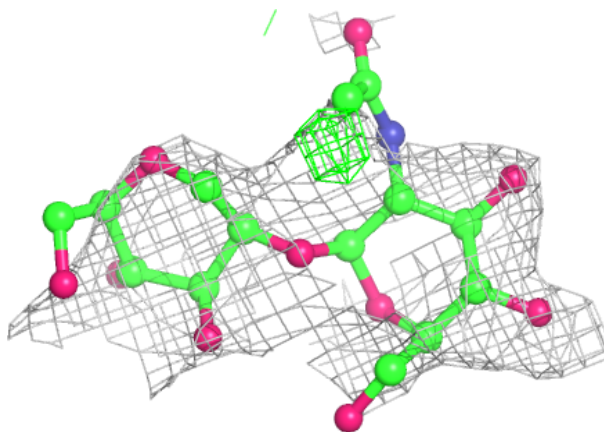


Electron density around Chain H:

$2mF_o-DF_c$ (at 0.7 rmsd) in gray
 mF_o-DF_c (at 3 rmsd) in purple (negative)
and green (positive)

**Electron density around Chain I:**

$2mF_o-DF_c$ (at 0.7 rmsd) in gray
 mF_o-DF_c (at 3 rmsd) in purple (negative)
and green (positive)



6.4 Ligands

In the following table, the Atoms column lists the number of modelled atoms in the group and the number defined in the chemical component dictionary. The B-factors column lists the minimum, median, 95th percentile and maximum values of B factors of atoms in the group. The column labelled 'Q< 0.9' lists the number of atoms with occupancy less than 0.9.

Mol	Type	Chain	Res	Atoms	RSCC	RSR	B-factors(Å ²)	Q<0.9
6	GAL	D	301	11/12	0.73	0.18	64,79,87,88	0

6.5 Other polymers

There are no such residues in this entry.